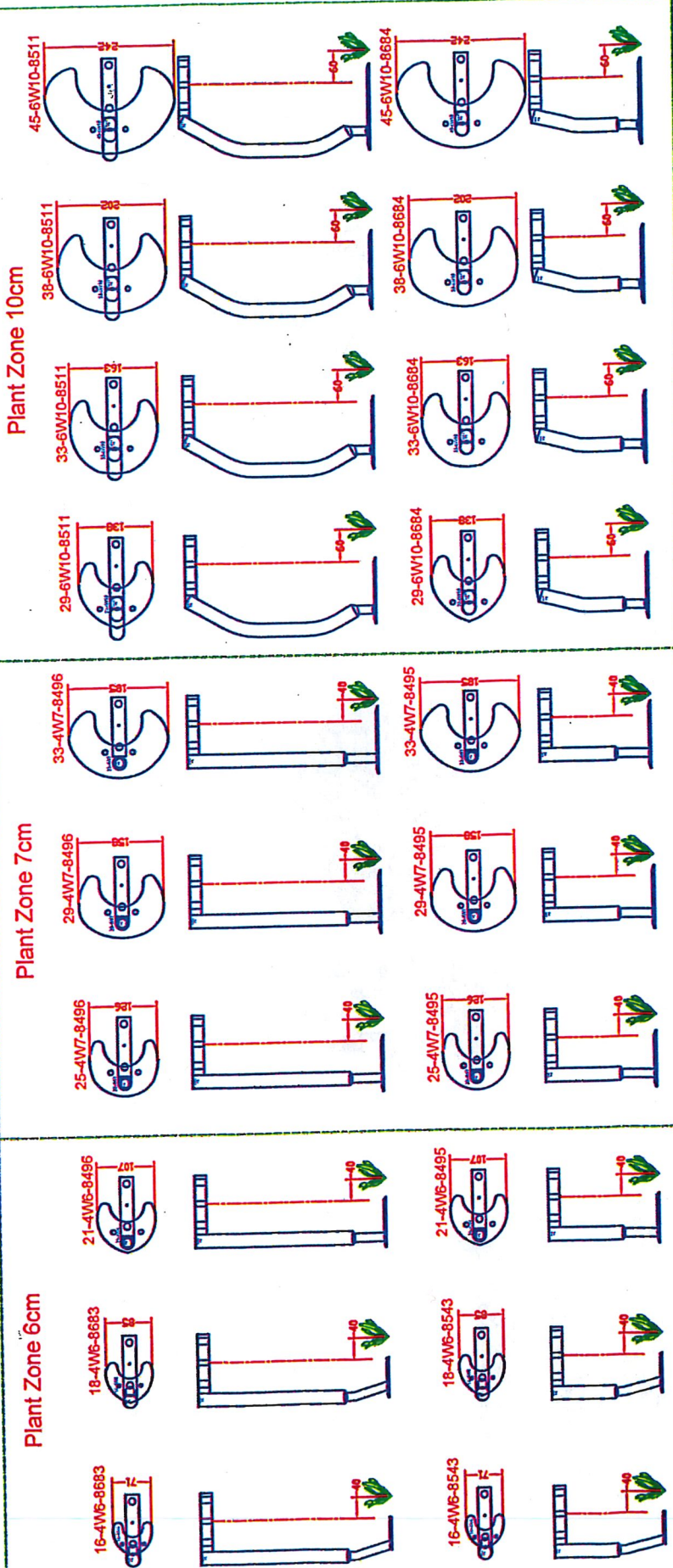
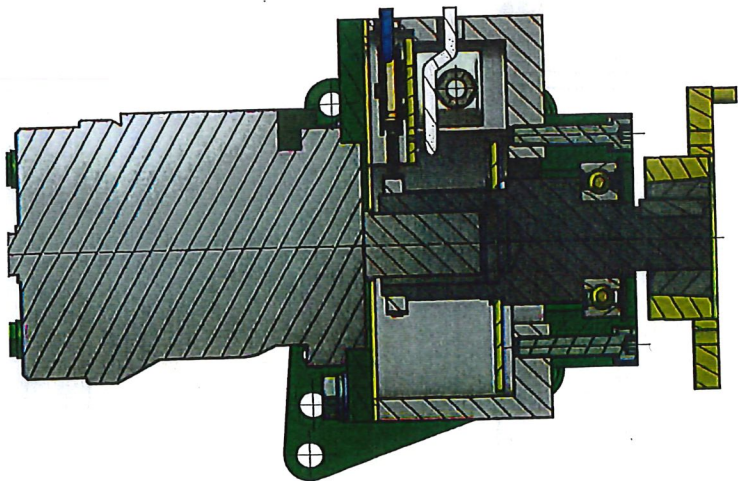


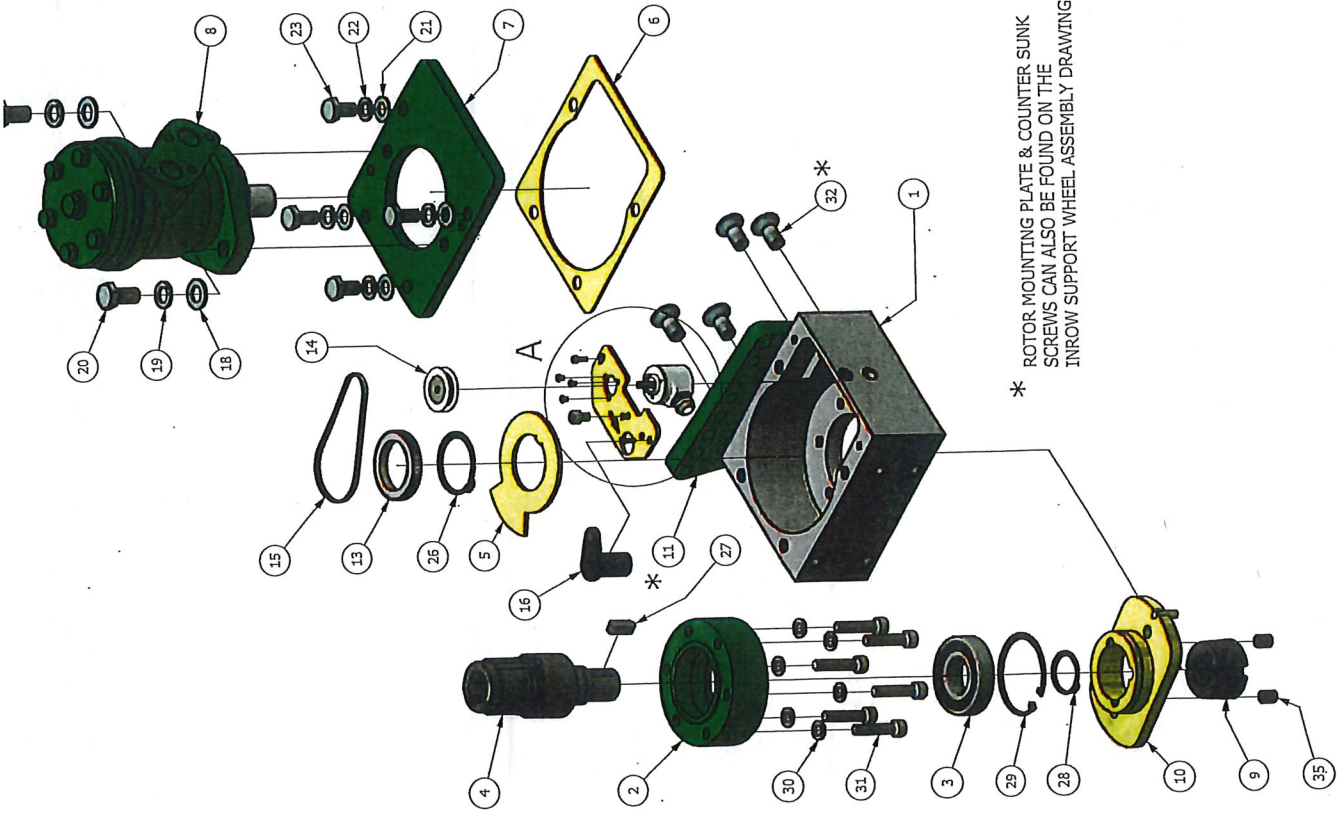
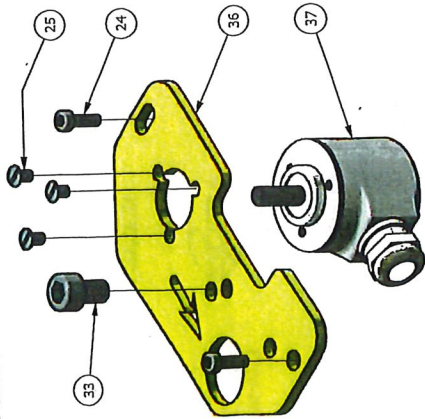
21-4W6-10411 25-WW7-10411



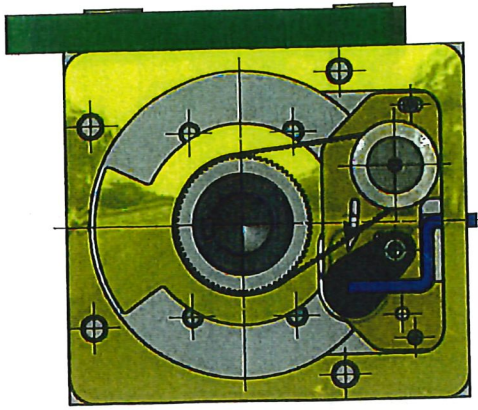


SECTION VIEW SHOWING ASSEMBLY OF ROTOR SHAFT.

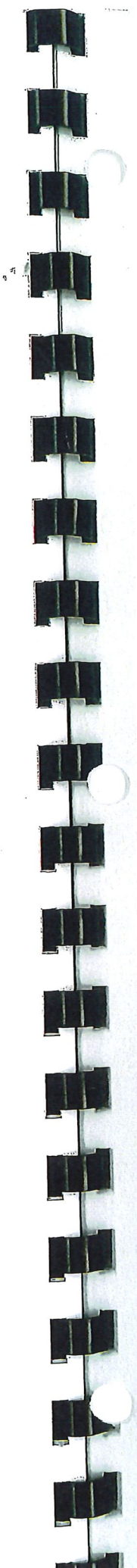
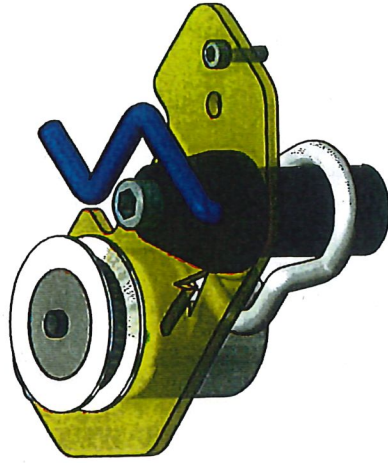
ENLARGED VIEW AT 'A' TO HIGHLIGHT ENCODER PLATE. ARROW INDICATES CLOCKWISE OR ANTI-CLOCKWISE DIRECTION.



* ROTOR MOUNTING PLATE & COUNTER SUNK SCREWS CAN ALSO BE FOUND ON THE INROW SUPPORT WHEEL ASSEMBLY DRAWING.



VIEWS ABOVE & BELOW TO SHOW POSITION OF WIRING FOR ENCODER & GEAR TOOTH SENSOR.



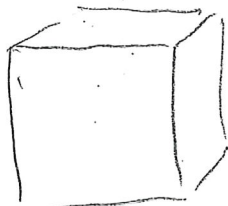
ROBOCROP IN ROW ROTOR DRIVE ASSEMBLY

ITEM No.	DESCRIPTION	PART No.	QUANTITY
1	ROTOR BODY	8300.00	1
2	ROTOR BEARING HOUSING	8302.00	1
3	SEALED BEARING 6202-2RS		1
4	ROTOR SHAFT	8303.00	1
5	ROTOR TIMING DISC	8305.00	1
6	MOTOR HOUSING SEAL	8304.00	1
7	ROTOR MOTOR MOUNTING PLATE	8301.02	1
8	HYDRAULIC MOTOR	8418.00	1
9	TAPER LOCK BUSH	8497.00	1
10	ROTOR DRIVE COUPLING	8494.00	1
11	ROTOR MOUNTING PLATE	8621.00	1
12	ENCODER	8310.00	1
13	ROTOR HOUSING TIMING PULLEY	8307.00	1
14	ROTOR HOUSING TIMING PULLEY	8308.00	1
15	TIMING BELT	8309.00	1
16	GEAR TOOTH SENSOR	8311.00	1
17	ENCODER PLATE	8306.02	1
18	M12 FLAT WASHER BZP		2
19	M12 SPRING WASHER BZP		2
20	M12x25 BOLT BZP		2
21	M10 FLAT WASHER BZP		4
22	M10 SPRING WASHER BZP		4
23	M10x20 BOLT BZP		4
24	SOCKET CAP SCREW M3x10 BZP		2
25	C' SUNK ALLEN HEAD SCREW M3x5 BZP		3
26	45MM EXTERNAL CIRCLIP		1
27	KEY	8821.00	1
28	30MM EXTERNAL CIRCLIP		1
29	62MM INTERNAL CIRCLIP		1
30	M8 SPRING WASHER BZP		6
31	SOCKET CAP SCREW M8x40 BZP		6
32	C' SUNK ALLEN HEAD SCREW M12x25 BZP		4
33	SOCKET CAP SCREW M6x10 BZP		1

Encoder black - white - green - red

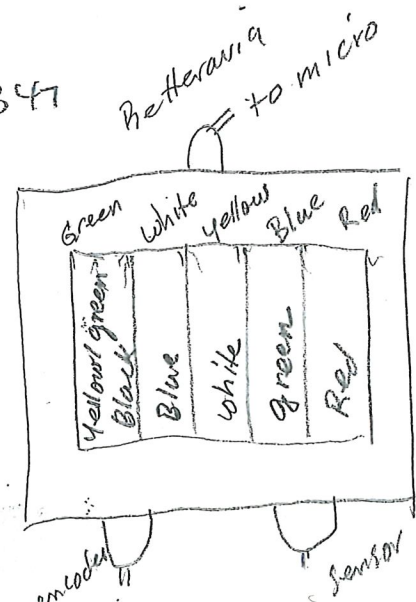
Sensor yellow/green - Bl. - R. - A.

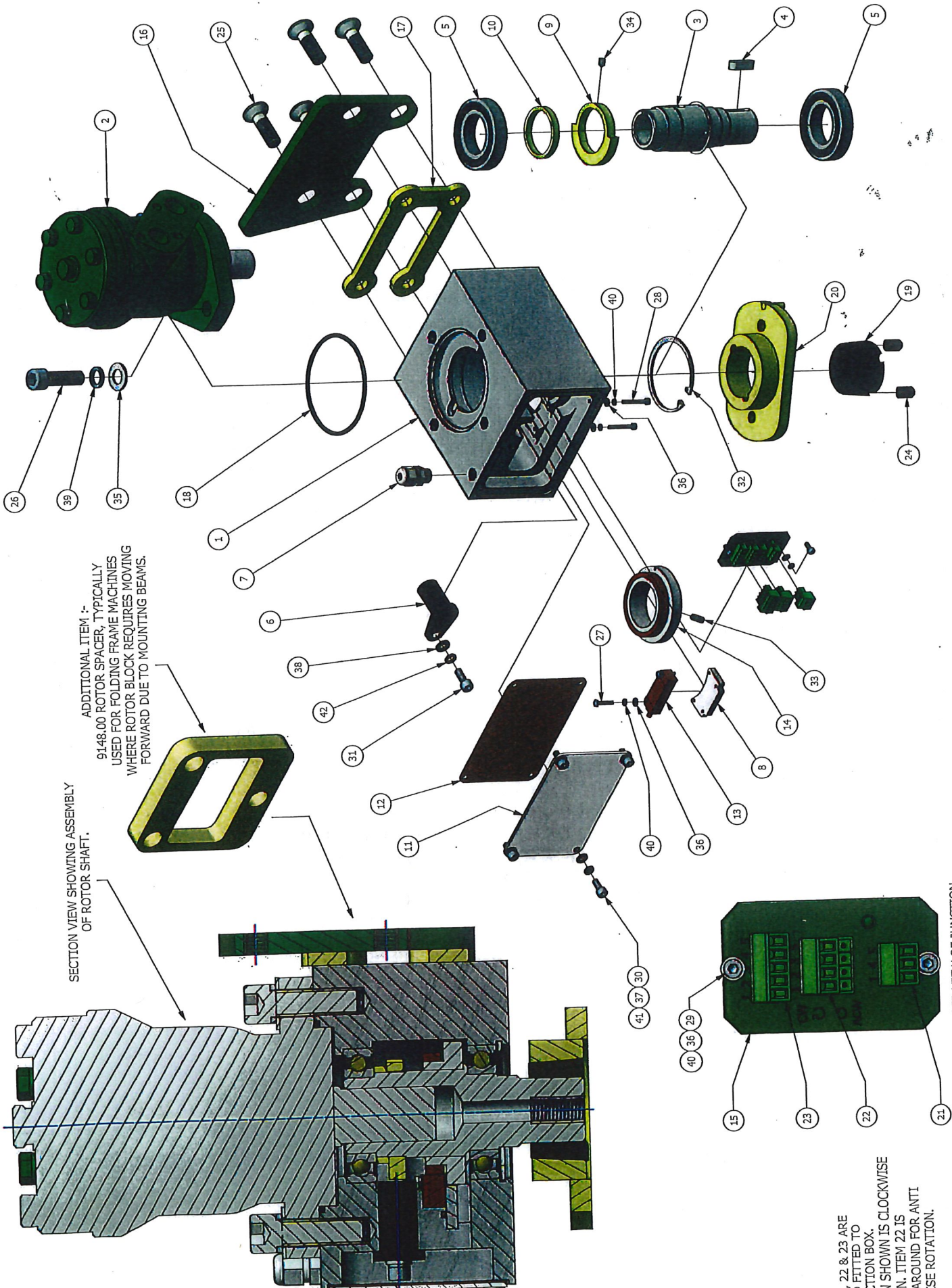
37- encoder 8310 use 9347



120032

Gland 120033
is required





SECTION VIEW SHOWING ASSEMBLY OF ROTOR SHAFT.

ADDITIONAL ITEM :-
9148.00 ROTOR SPACER, TYPICALLY USED FOR FOLDING FRAME MACHINES WHERE ROTOR BLOCK REQUIRES MOVING FORWARD DUE TO MOUNTING BEAMS.

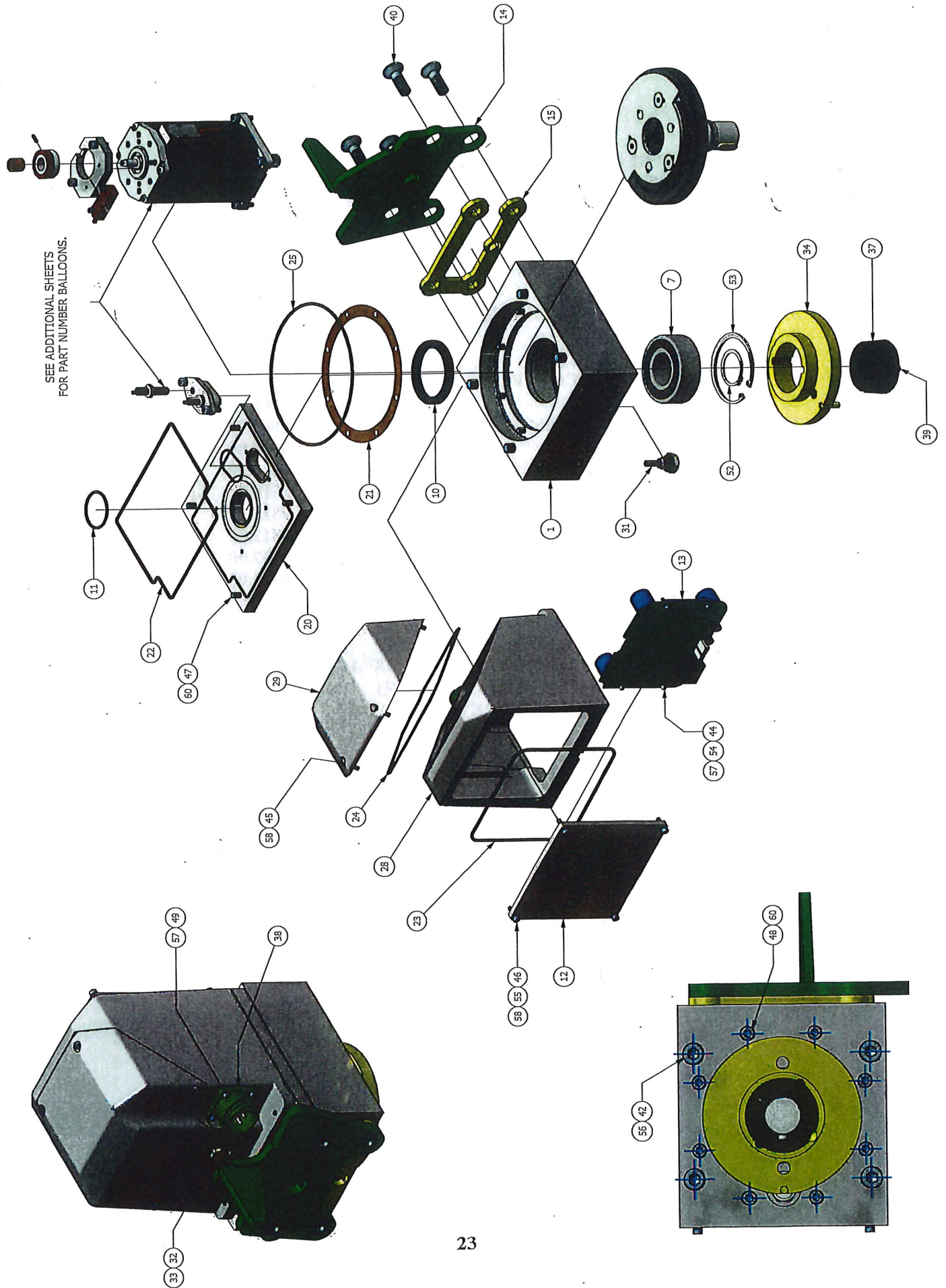
22 & 23 ARE FITTED TO SECTION BOX. IN SHOWN IS CLOCKWISE. IN ITEM 22 IS AROUND FOR ANTI-ROTORATION.

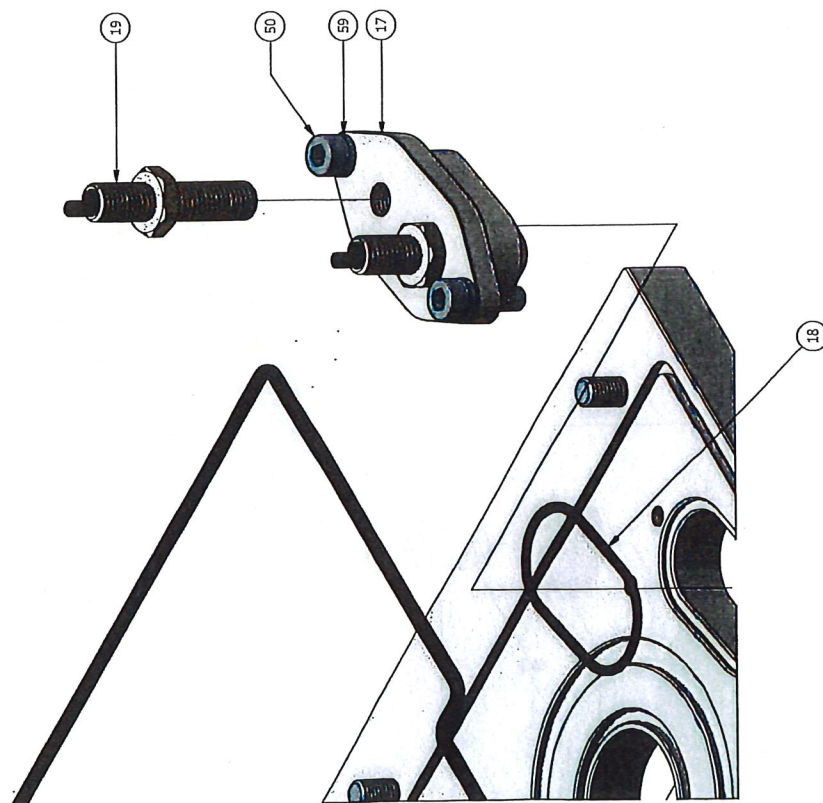
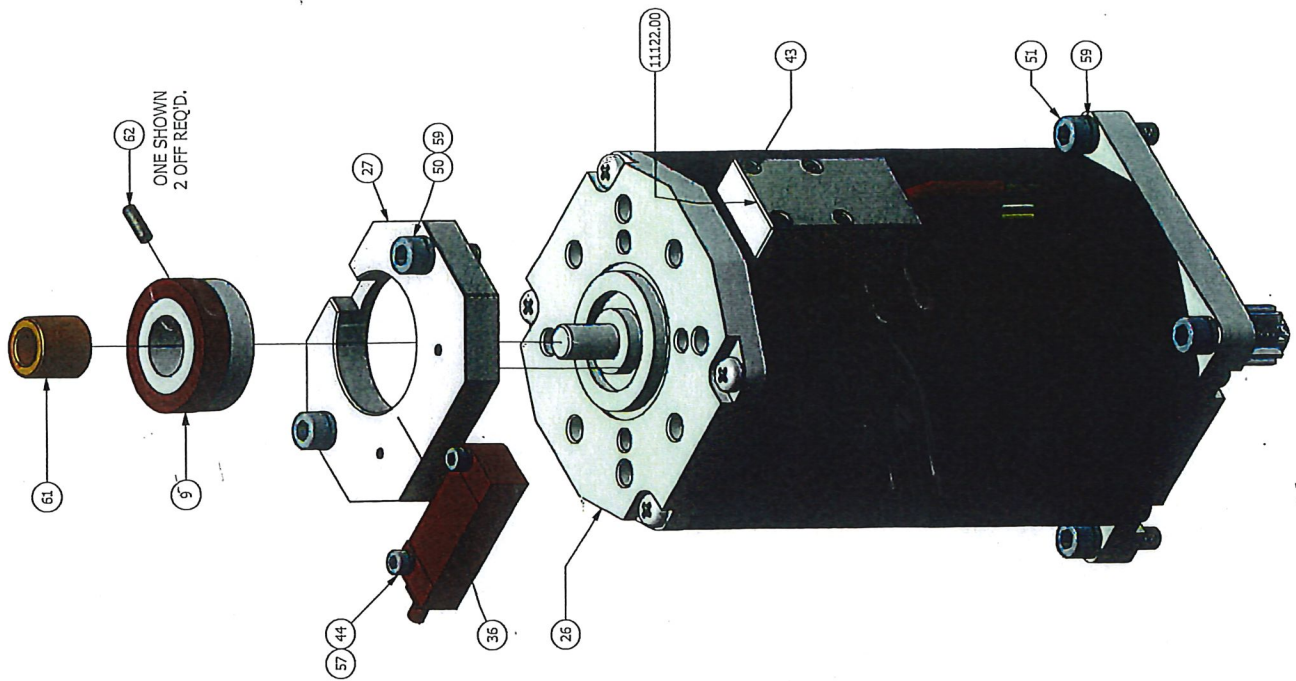
ENLARGED VIEW OF JUNCTION ROTATION BOARD.

ROBOCROP ROTOR DRIVE ASSEMBLY

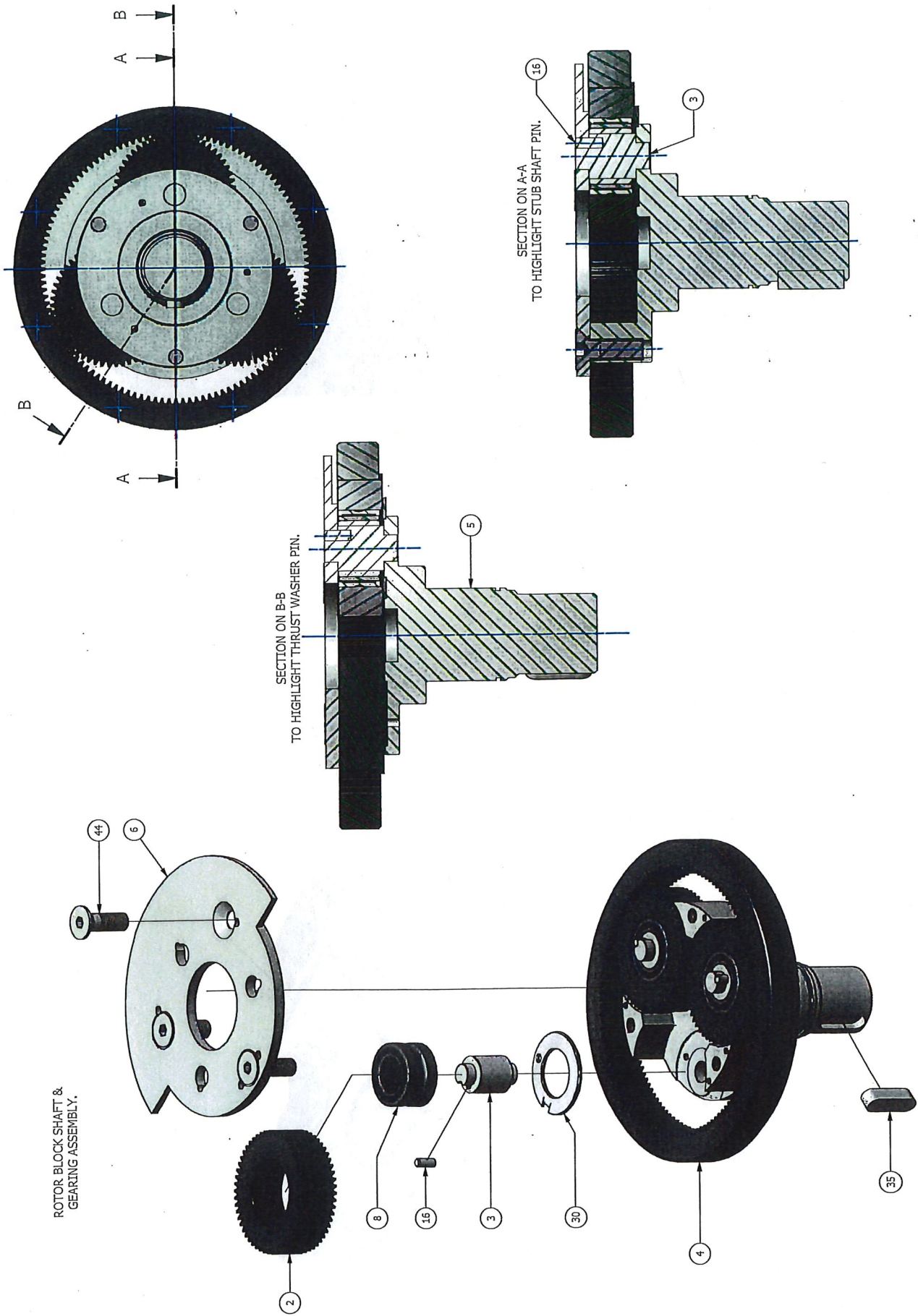
ITEM No.	DESCRIPTION	PART No.	QUANTITY
1	ROTOR BLOCK	9800.01	1
2	HYDRAULIC MOTOR	8418.00	1
3	ROTOR SHAFT	9801.01	1
4	KEY (8x7x20 LONG)	8821.00	1
5	SEALED BEARING 6007-2RS1		2
6	GEAR TOOTH SENSOR	8311.00	1
7	CABLE GLAND	8631.00	1
8	MAGNET RING SENSOR MOUNT	9802.00	1
9	GEAR TOOTH	9803.00	1
10	ASSEMBLY SPACER	9804.00	1
11	ROTOR BLOCK COVER	9805.00	1
12	CORK SEAL	9806.00	1
13	MAGNET RING SENSOR	9807.00	1
14	MAGNET RING	9808.00	1
15	JUNCTION ROTATION BOARD	9809.00	1
16	ROTOR MOUNTING PLATE	9810.00	1
17	SPACER	9811.00	1
18	O-RING	9812.00	1
19	TAPER LOCK BUSH	5337.00	1
20	ROTOR DRIVE COUPLING	8494.00	1
21	3 PIN PLUG (FITTED TO BOARD)		1
22	4 PIN PLUG (FITTED TO BOARD)		1
23	5 PIN PLUG (FITTED TO BOARD)		1
24	SOCKET SET SCREW, OVAL POINT 3/8"-16 x 5/8" (SUPPLIED WITH TAPER LOCK BUSH)		2
25	C'SUNK ALLEN HEAD SCREW M12x40 BZP		4
26	M12x40 SOCKET CAP SCREW BZP		2
27	M3x16 BOLT BZP		2
28	M3x25 SOCKET CAP SCREW BZP		2
29	M3x8 SOCKET CAP SCREW BZP		2
30	M5x12 SOCKET CAP SCREW BZP		4
31	M6x16 SOCKET CP SCREW BZP		1
32	62MM INTERNAL CIRCLIP		1
33	M5x16 SOCKET SET SCREW BZP		1
34	M5x8 SOCKET SET SCREW BZP		1
35	M12 THIN WASHER BZP		2
36	M3 FLAT WASHER BZP		6
37	M5 FLAT WASHER BZP		4
38	M6 FLAT WASHER BZP		1
39	M12 SPRING WASHER BZP		2
40	M3 SPRING WASHER BZP		6
41	M5 SPRING WASHER BZP		4
42	M6 SPRING WASHER BZP		1

SEE ADDITIONAL SHEETS
FOR PART NUMBER BALLOONS.





ROTOR BLOCK SHAFT & GEARING ASSEMBLY.

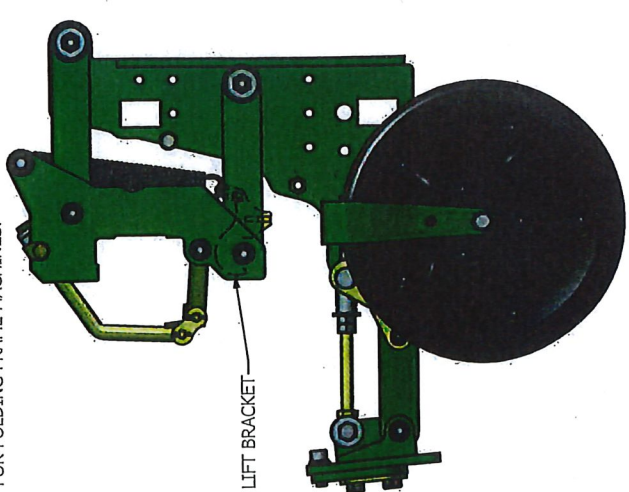


ROBOCROP E-ROTOR DRIVE ASSEMBLY

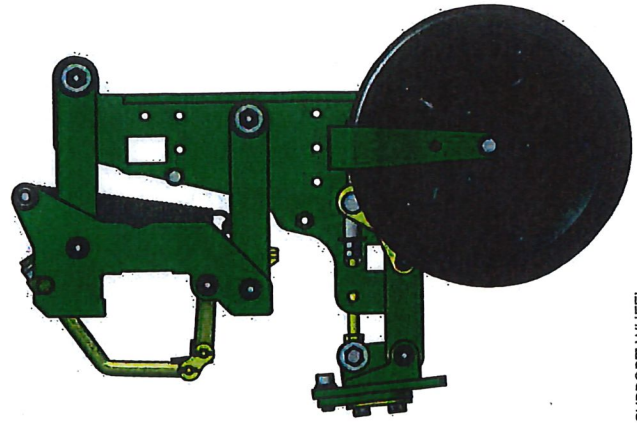
ITEM No.	DESCRIPTION	PART No.	QUANTITY
1	ROTOR BLOCK	10725	1
2	ROTOR BLOCK SPUR GEAR	10733	3
3	PLANETARY GEAR SHAFT	10734	3
4	ROTOR BLOCK RING GEAR	10735	1
5	ROTOR SHAFT	10736	1
6	ROTOR SHAFT TOP PLATE	10737	1
7	SEALED BEARING	10739	1
8	NEEDLE ROLLER BEARING	10740	3
9	MAGNET SENSOR RING	10744	1
10	SHAFT SEAL	10748	1
11	O-RING	10749	1
12	CIRCUIT BOARD COVER	10929	1
13	E-ROTOR CAN BOARD	10940	1
14	E-ROTOR MOUNT PLATE	10944	1
15	E-ROTOR SPACER	10945	1
16	STUB SHAFT PIN	10968	3
17	PROXIMITY SENSOR BLOCK	11087	1
18	O-RING	11088	1
19	PROXIMITY SENSOR C/W NUTS	11089	2
20	GEAR BOX TOP	11101	1
21	RING GEAR GASKET	11102	1
22	O-RING	11103	1
23	O-RING	11104	1
24	O-RING	11105	1
25	O-RING	11106	1
26	ELECTRIC MOTOR WITH GEAR SHAFT	11108	1
27	TOP ENCODER MOUNT	11109	1
28	MOTOR CIRCUIT HOUSING	11110	1
29	MOTOR TOP COVER	11111	1
30	THRUST WASHER	11114	3
31	MAGNETIC PLUG	11117	1
32	VENT PLUG	11118	1
33	VENT PLUG NUT	11118.nut	1
34	IN ROW ROTOR TINE MOUNT	8494	1
35	KEY	8821	1
36	MAGNET RING SENSOR	9807	1
37	TAPER LOCK BUSH	1078	1
38	CAN PLUG		1
39	SOCKET SET SCREW, OVAL POINT 3/8" BSW x 5/8" (SUPPLIED WITH TAPER LOCK BUSH)		2
40	M12x35 C/SUNK SET SCREW BZP		4
41	M8x25 C/SUNK SET SCREW BZP		3
42	M10x70 SOCKET HEAD CAP SCREW BZP		4

ITEM No.	DESCRIPTION	PART No.	QUANTITY
43	M2.5x12 SOCKET HEAD CAP SCREW BZP		4
44	M3x16 SOCKET HEAD CAP SCREW BZP		6
45	M4x12 SOCKET HEAD CAP SCREW BZP		4
46	M4x16 SOCKET HEAD CAP SCREW BZP		4
47	M6x16 SOCKET HEAD CAP SCREW BZP		4
48	M6x50 SOCKET HEAD CAP SCREW BZP		8
49	M3x10 SOCKET HEAD CAP SCREW BZP		4
50	M6x16 SOCKET HEAD CAP SCREW BZP		4
51	M5x20 SOCKET HEAD CAP SCREW BZP		4
52	EXTERNAL CIRCLIP - 35mm SHAFT		1
53	INTERNAL CIRCLIP - 72mm BORE		1
54	M3 WASHER BZP		4
55	M4 WASHER BZP		4
56	M10 SPRING WASHER BZP		4
57	M3 SPRING WASHER BZP		10
58	M4 SPRING WASHER BZP		8
59	M5 SPRING WASHER BZP		8
60	M6 SPRING WASHER BZP		12
61	SPACER BUSH	11305	1
62	M3x10 SET SCREW BZP		2

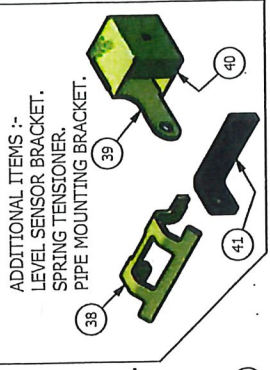
LONG REACH SUPPORT WHEEL
FOR FOLDING FRAME MACHINES.



LIFT BRACKET



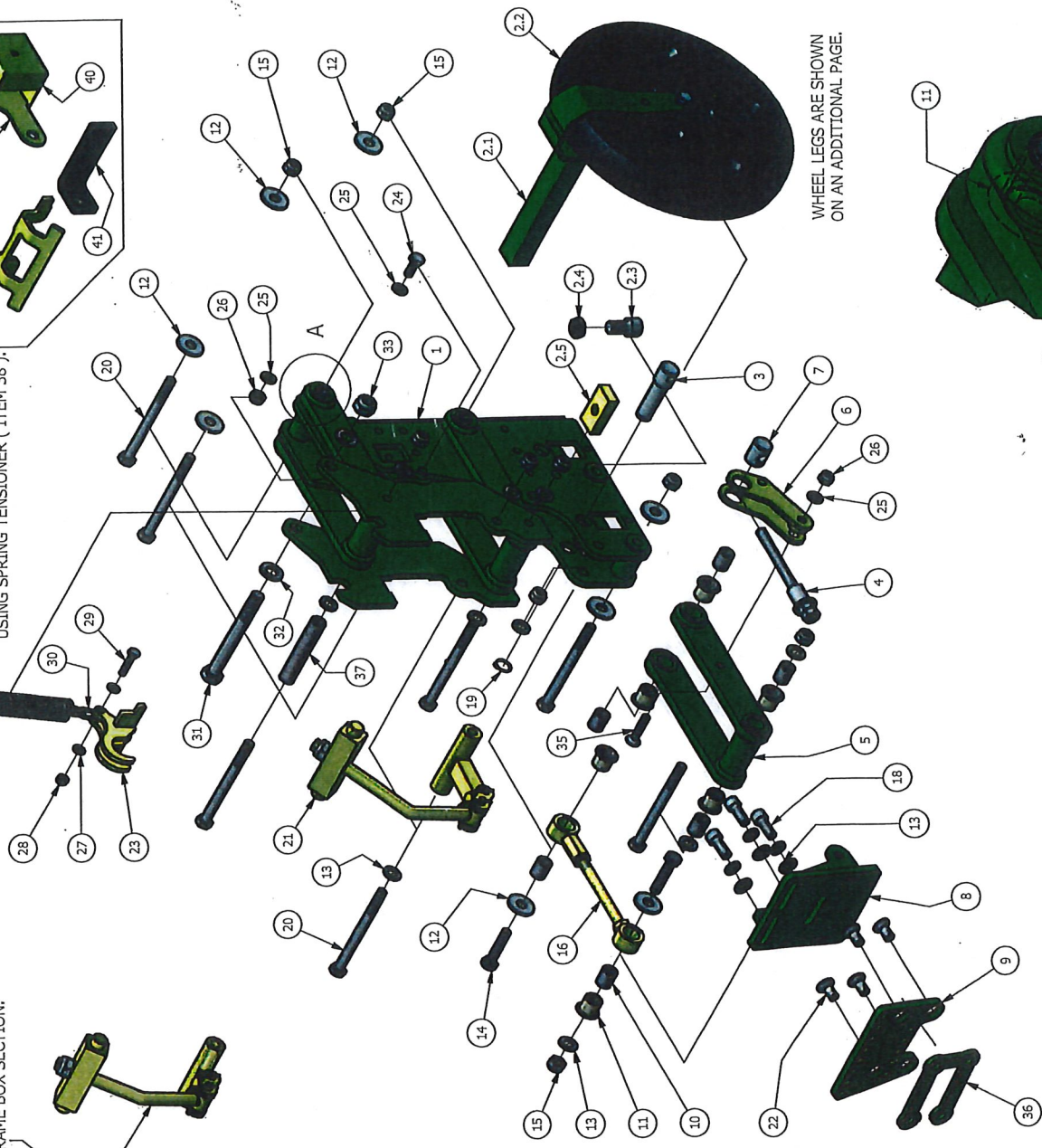
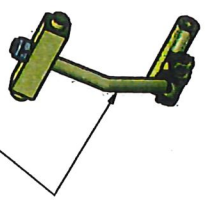
LONG REACH SUPPORT WHEEL
FOR NON-FOLDING FRAME MACHINES.



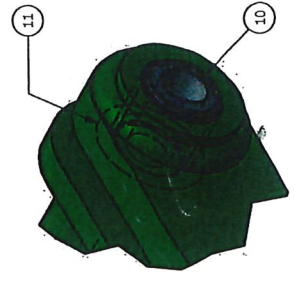
ADDITIONAL ITEMS:-
LEVEL SENSOR BRACKET.
SPRING TENSIONER.
PIPE MOUNTING BRACKET.

DEPENDENT ON MACHINE
REQUIREMENTS AN ADDITIONAL
SPRING (ITEM 34) IS ASSEMBLED
USING SPRING TENSIONER (ITEM 38).

FRAME CLAMP AVAILABLE
FOR 100x50 FRAME BOX SECTION.



WHEEL LEGS ARE SHOWN
ON AN ADDITIONAL PAGE.



ENLARGED VIEW AT 'A'
LINK BUSHES

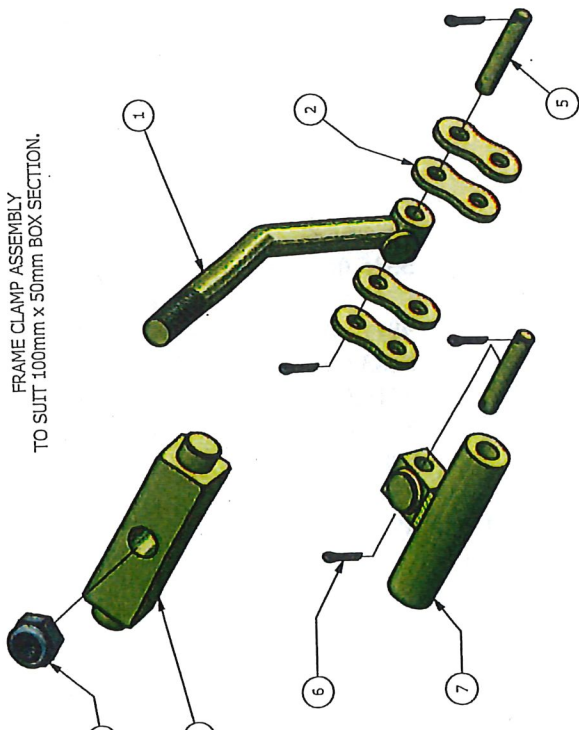


ROBOCROP IN ROW SUPPORT WHEEL ASSEMBLY

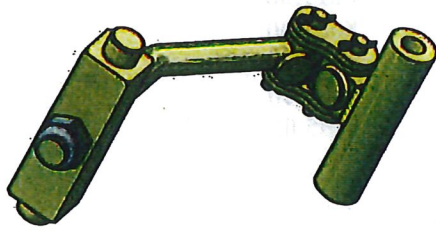
ITEM No.	DESCRIPTION	PART No.	QUANTITY
1	SUPPORT WHEEL UNIT	8614.02	1
ITEMS 2.1 TO 2.5 AS FOLLOWS:-			
2.1	WHEEL LEG	8623.00	1
2.2	65MM WHEEL	7599.00	1
2.3	SOCKET CAP SCREW M16x30 BZP		1
2.4	M16 HEX. HALF NUT BZP		1
2.5	SUPPORT WHEEL CLAMP PLATE	8622.00	1
3	ADJUSTMENT RETAINING PIN	8616.00	1
4	DEPTH ADJUSTMENT BOLT	8618.00	1
5	PARALLEL LINK	9147.00	1
6	DEPTH CONTROL LINK	8615.00	1
7	DEPTH ADJUSTMENT BUSH	8617.00	1
8	LINKAGE MOUNTING PLATE	8619.00	1
9	ROTOR MOUNTING PLATE	9810.00	1
10	PARALLEL LINK BUSH	8184.00	6
11	BUSH	8185.02	6
12	LARGE OD WASHER 12x37x3 BZP		8
13	M12 FLAT WASHER BZP		13
14	M12x55 BOLT BZP		2
15	M12 NYLOC NUT BZP		9
16	ADJUSTABLE PARALLEL LINK	8725.00	1
17	M12 SPRING WASHER BZP		3
18	SOCKET CAP SCREW M12x30 BZP		3
19	20MM EXTERNAL CIRCLIP		1
20	M12x40 BOLT BZP		7
21	FRAME CLAMP	7537.00	1
22	C'SUNK ALLEN HEAD SCREW M12x25 BZP		4
23	SPRING LIFT BRACKET	8544.00	1
24	M10x25 BOLT BZP		2
25	M10 FLAT WASHER BZP		5
26	M10 NYLOC NUT BZP		3
27	M8 FLAT WASHER BZP		2
28	M8 NYLOC NUT BZP		1
29	M8x35 BOLT BZP		1
30	CHAIN LINK		1
31	M16x140 BOLT BZP		1
32	M16 FLAT WASHER BZP		2
33	M16 NYLOC NUT BZP		1
34	TENSION SPRING	5536.00	1
35	C'SUNK ALLEN HEAD SCREW M10x45 BZP		1
36	SPACER	9811.00	1
37	BUSH SHAFT	8183.00	2
38	SPRING TENSIONER	9716.00	1
39	LEVEL SENSOR BRACKET	8988.00	2
40	LEVEL SENSOR GUARD	8989.00	2
41	PIPE MOUNTING BRACKET	9331.00	1

ITEMS 39 & 40 QTY IS PER MACHINE

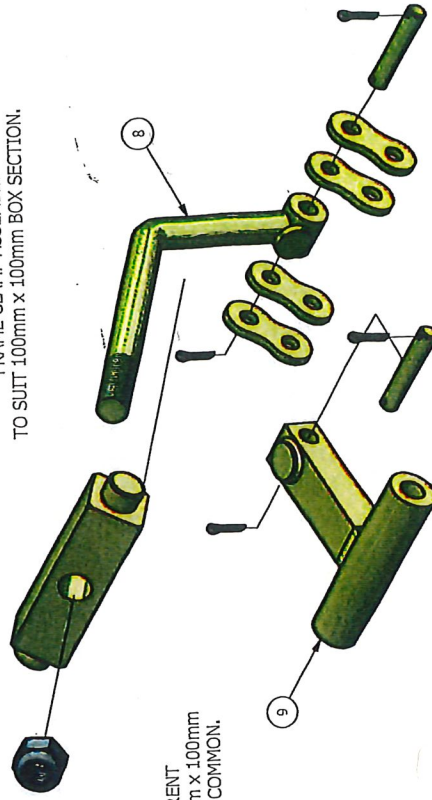
FRAME CLAMP ASSEMBLY
TO SUIT 100mm x 50mm BOX SECTION.



FRAME CLAMP ASSEMBLY
ASSEMBLED VIEW.

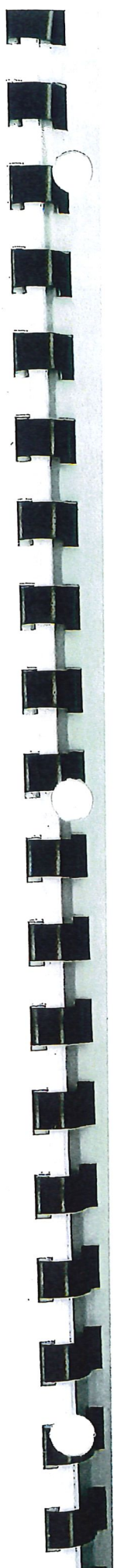
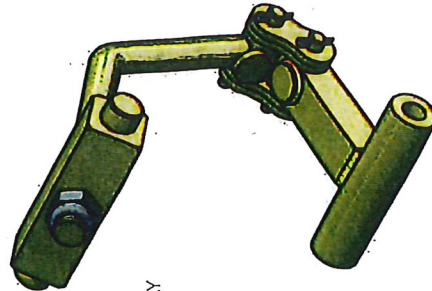


FRAME CLAMP ASSEMBLY
TO SUIT 100mm x 100mm BOX SECTION.



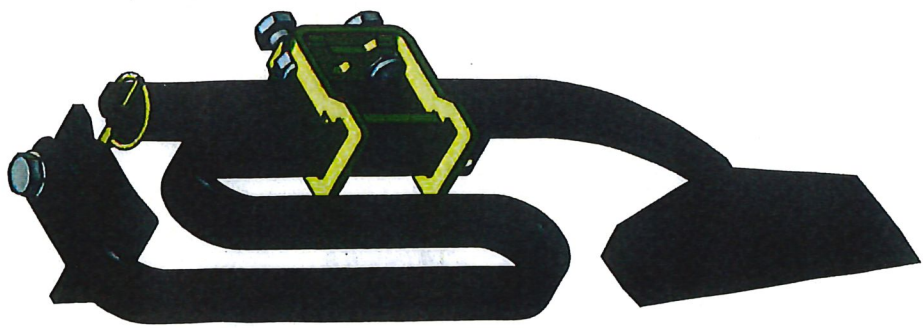
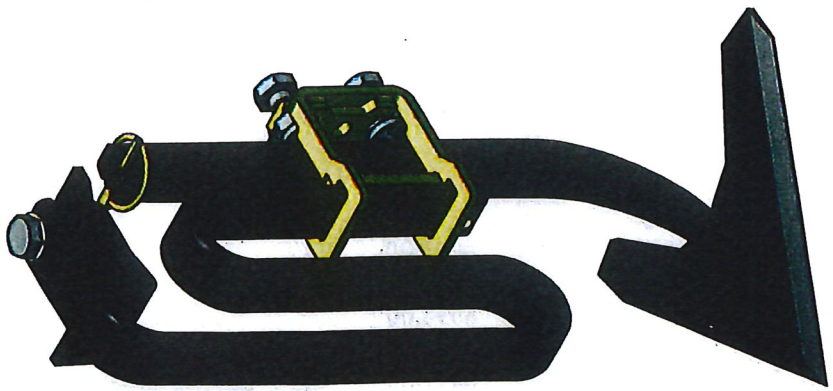
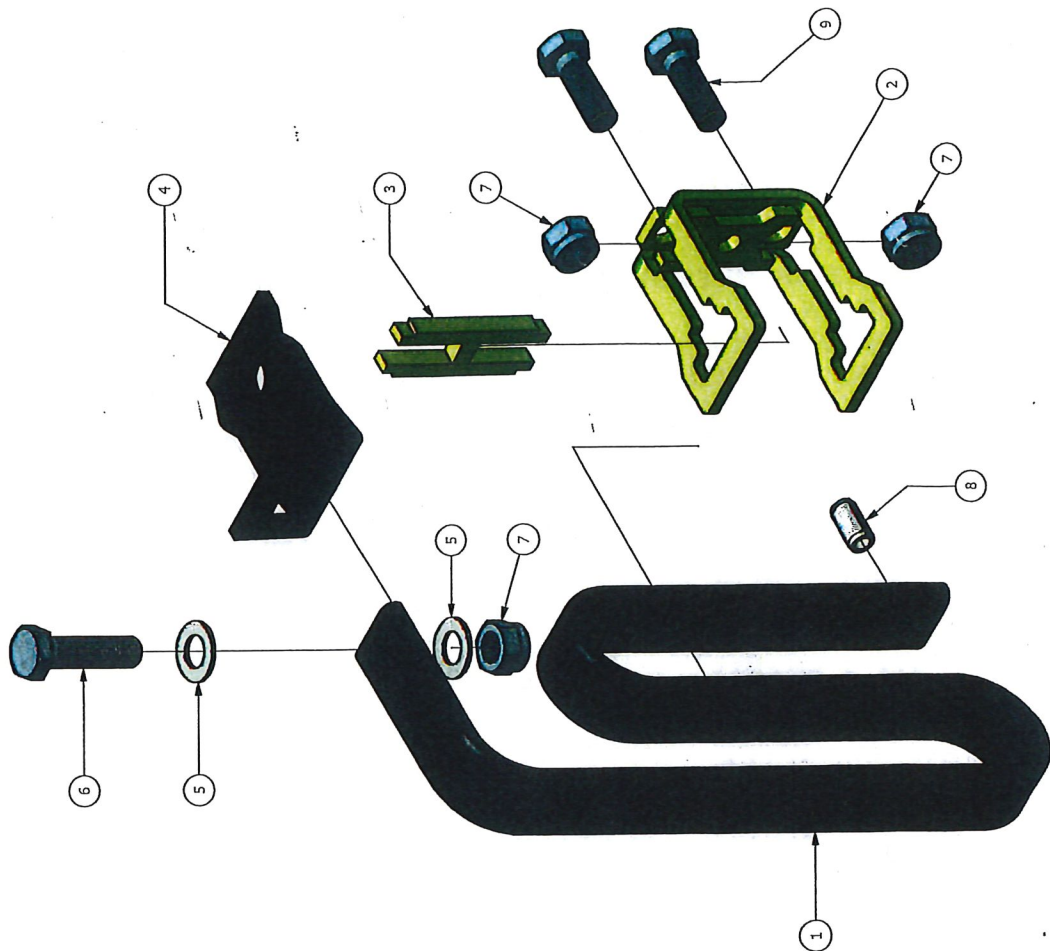
ITEMS 8 & 9 ARE THE DIFFERENT
PARTS REQUIRED FOR 100mm x 100mm
BOX. ALL OTHER PARTS ARE COMMON.

FRAME CLAMP ASSEMBLY
ASSEMBLED VIEW.



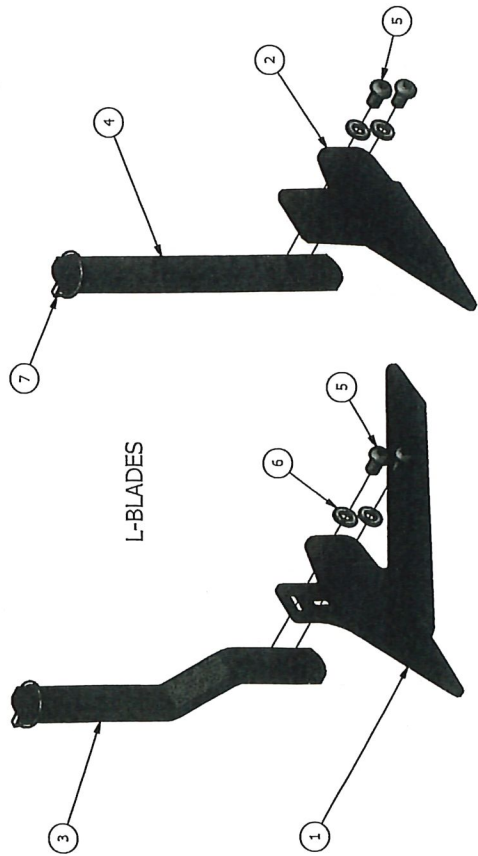
ROBOCROP WHEEL ASSEMBLY FRAME CLAMPS

ITEM No.	DESCRIPTION	PART No.	QUANTITY
1	CLAMP BOLT (100x50 BOX)	7538.00	1
2	CHAIN LINK PLATE	7725.00	4
3	BOLT SWIVEL	7540.00	1
4	M16 NYLOC NUT BZP	1030	1
5	LINK PIN	7726.00	2
6	LINK SPLIT PIN	7727.00	4
7	CLAMP LINK (100x50 BOX)	7539.00	1
8	CLAMP BOLT (100x100 BOX)	7536.00	1
9	CLAMP LINK (100x100 BOX)	7537.00	1



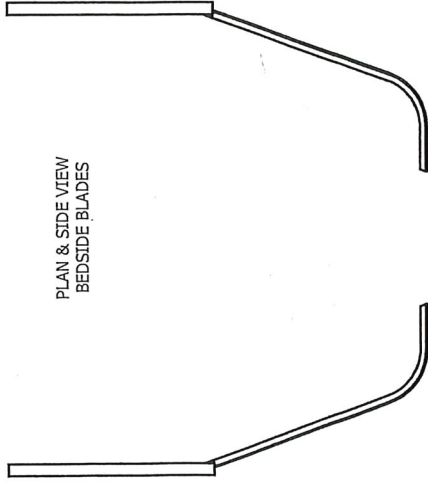
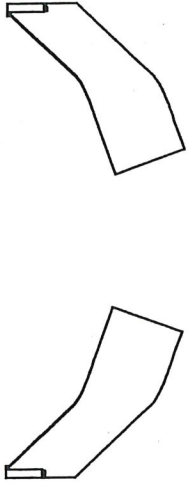
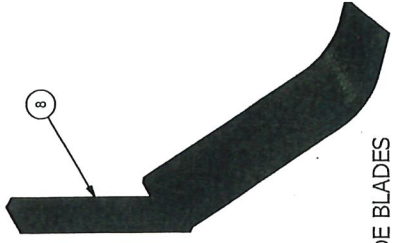
ROBOCROP COMPACT SPRING TINE ASSEMBLY

ITEM No.	DESCRIPTION	PART No.	QUANTITY
1	COMPACT SPRING TINE	9777.01	1
2	TINE CLAMP	10094.00	1
3	TINE CLAMP ROCKER BASE	10095.00	1
4	S-TINE CLAMP	5992	1
5	M12 THIN WASHER BZP		2
6	M12x45 FINE THREAD BOLT BZP		1
7	M12x1.5 NYLOC NUT BZP		3
8	SPRING PIN		1
9	M12x35 FINE THREAD BOLT BZP		2



L-BLADES

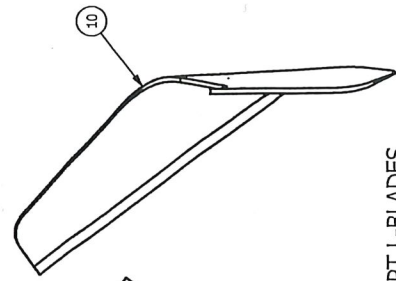
BEDSIDE BLADES



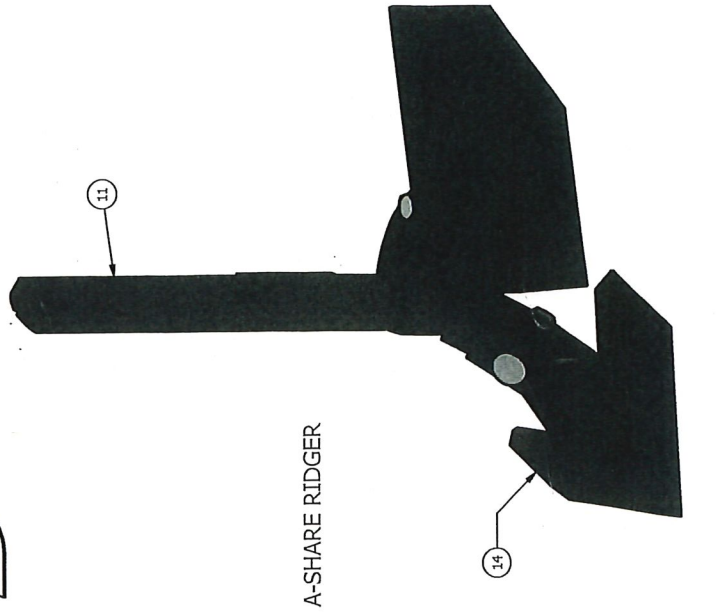
PLAN & SIDE VIEW
BEDSIDE BLADES



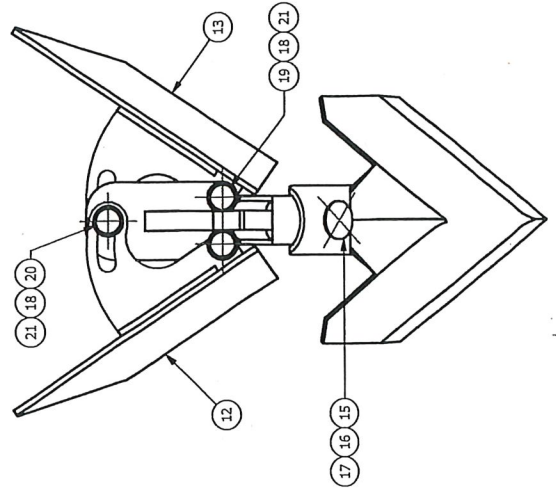
15



SWEPT L-BLADES



A-SHARE RIDGER



ROBOCROP 'L' BLADES, SWEPT 'L' BLADES,
BEDSIDE BLADES & A-SHARE RIDGER

QUANTITY NOT SHOWN AS LIST IS FOR REFERENCE PURPOSES ONLY

ITEM No.	DESCRIPTION	PART No.	QUANTITY
1	R/H 'L' BLADE	5994	
2	L/H 'L' BLADE	5995	
3	OFFSET 'L' BLADE LEG		
	10MM	9623	
	35MM	9600	
	40MM	10088	
	55MM	7414	
	85MM	7691	
4	'L' BLADE LEG	7621	
5	M10x16 SOCKET BUTTON HEAD SCREW BZP	7803	
6	WASHER M10 BZP		
7	RETAINING PIN	10557	
8	BEDSIDE BLADES		
	R/H BEDSIDE BLADE	7747	
	L/H BEDSIDE BLADE	7746	
9	R/H SWEPT L-BLADE	7381	
10	L/H SWEPT L-BLADE	7382	
QUANTITY SHOWN SPECIFIC TO A-SHARE RIDGER UNIT			
11	A SHARE LEG FOR RIDGER WINGS	9694	1
12	RH RIDGER WING	9696	1
13	LH RIDGER WING	9697	1
14	A-SHARE 125 (5")	6871	1
15	SQUARE NECK BOLT M10x50		1
16	M10 SPRING WAHER BZP		1
17	M10x1.5 NUT BZP		1
18	M8 THIN WASHER BZP		6
19	M8x25 BOLT BZP		2
20	M8x30 BOLT BZP		1
21	M8 NYLOC NUT BZP		3



Purchase Order

Date	5/15/2018
P.O. No.	14329

Vendor:
 SOLEX CORPORATION
 220 SOUTH JEFFERSON
 DIXON, CA 95620

2560 S. SARAH AVE.
 FRESNO, CA 93706
 BAKERSFIELD, CA 93308
 Phone # 559-237-8311
 Phone # 661-679-3330
 Fax # 559-237-2048
 Fax # 661-218-9139

Ship To:
 AG WEST DISTRIBUTING CO., INC.
 2560 S. SARAH AVE.
 FRESNO, CA. 93706

Terms	NET 30
Ship Via	UPS
Account #	AGWES01

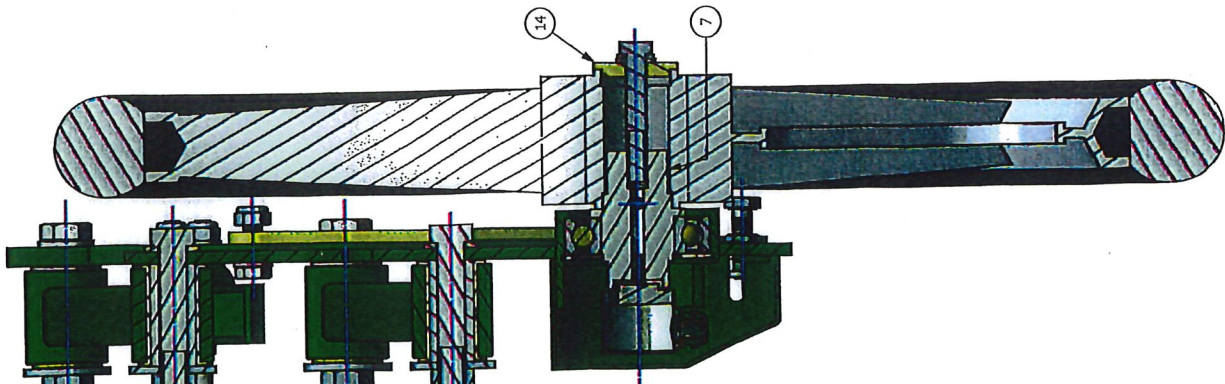
Item	Description	Qty	Unit Price	Ext. Price
COLBOK-783	2" PLANTER SHOE	3	16.00	48.00
T5005		1	0.00	0.00
COLP00-5459M	SEED PLATE METAL #2	2	16.405	32.81
T5039	SHUT OFF LEVER	2	13.12	26.24
Total				\$107.05

**ROBOCROP SPRING TINES, 'A' BLADES, SLASH BLADES
& WELD ON BLADES**

QUANTITY NOT SHOWN AS LIST IS FOR REFERENCE PURPOSES ONLY

ITEM No.	DESCRIPTION	PART No.	QUANTITY
1	SPRING TINE	5989.00	
2	M12x50 FINE THREAD BOLT BZP	7709	
3	M12 THIN WASHER BZP	7877	
4	SPRING TINE CLAMP	5992.00	
5	ADJUSTABLE SPRING TINE CLAMP	7515.00	
6	M12 FINE THREAD NYLOC NUT BZP	7487	
7	ADJUSTABLE SPRING TINE	7412.00	
8	M12x40 FINE THREAD BOLT BZP	8368	
9	ADJUSTABLE SPRING TINE NUT BLOCK	8365.00	
10	M10 SHARE BOLT	7812	
11	BOLT ON 'A' SHARES		
	100MM WIDE BLADE	6094.00	
	125MM WIDE BLADE	6871.00	
	150MM WIDE BLADE	7831.00	
	180MM WIDE BLADE	5990.00	
	200MM WIDE BLADE	7814.00	
	250MM WIDE BLADE	7815.00	
12	M10 HEX. NUT BZP	1150	
13	WELD ON FLAT 'A' SHARES		
	100MM WIDE BLADE	7648.00	
	120MM WIDE BLADE	7905.00	
	160MM WIDE BLADE	7619.00	
	180MM WIDE BLADE	7768.00	
	200MM WIDE BLADE	7741.00	
	220MM WIDE BLADE	7767.00	
	250MM WIDE BLADE	7551.00	
14	BLADE LEG	7552.00	
15	COMPLETE R/H SLASH BLADE LEG 180MM	7750.00	
	COMPLETE R/H SLASH BLADE LEG 130MM	8093.00	
16	COMPLETE L/H SLASH BLADE LEG 180MM	7749.00	
	COMPLETE L/H SLASH BLADE LEG 130MM	8094.00	
17	WELD ON 180MM R/H SLASH BLADE	7745.00	
18	WELD ON 130MM R/H SLASH BLADE	8091.00	
19	WELD ON 180MM L/H SLASH BLADE	7744.00	
20	WELD ON 130MM L/H SLASH BLADE	8092.00	
21	RETAINING PIN	10557.00	
22	M10 FLAT WASHER BZP		

SECTION THRU WHEEL SHAFT.

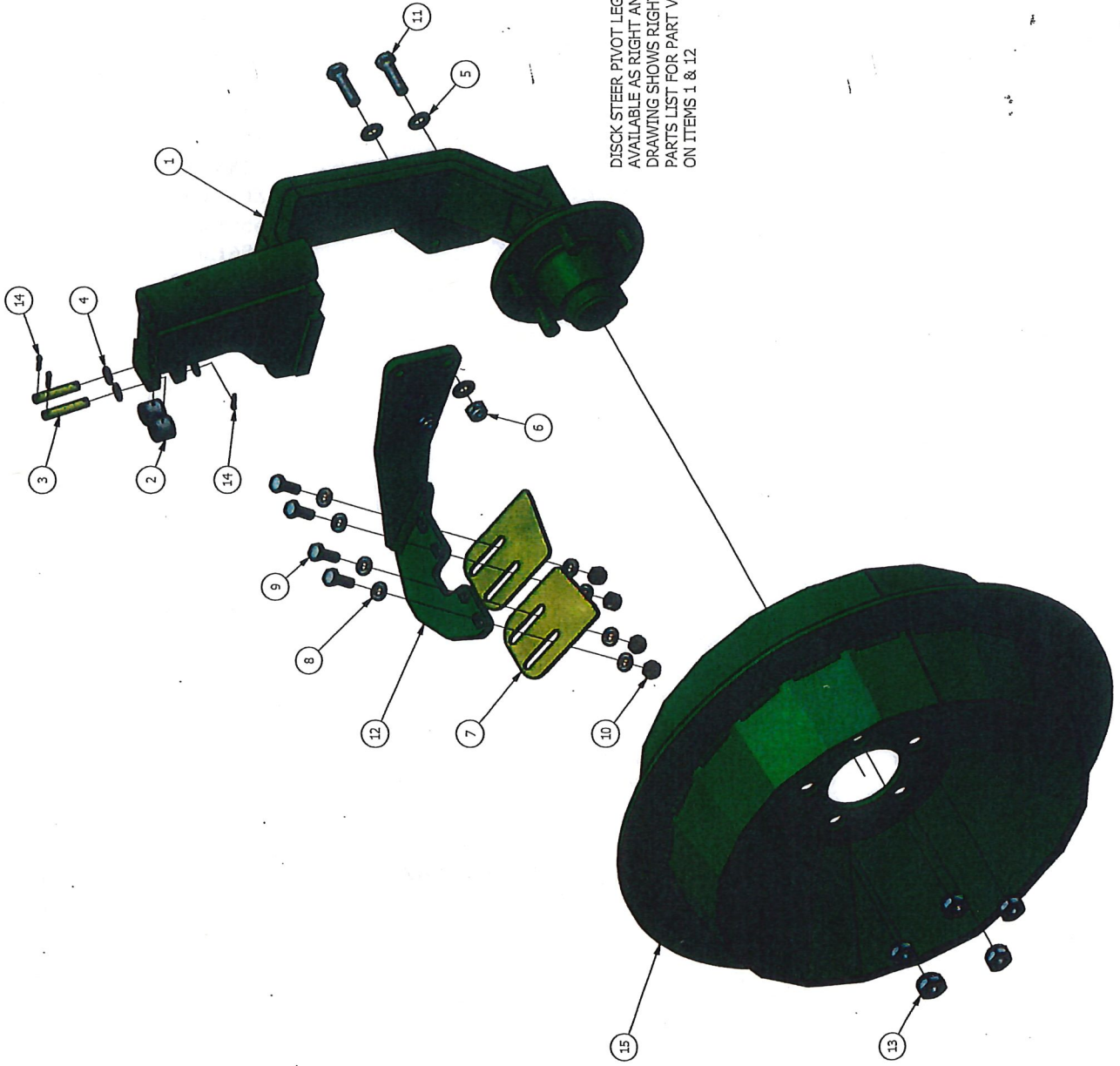


REAR VIEW SHOWING LOCK UP
CATCH IN PLACE - LOCKED POSITION



ROBOCROP LARGE ENCODER WHEEL ASSEMBLY

ITEM No.	DESCRIPTION	PART No.	QUANTITY
1	ENCODER WHEEL	8647.01	1
2	MOUNT BRACKET FOR ENCODER WHEEL	9991.00	1
3	UPPER PARALLEL LINK	9857.00	1
4	LOWER PARALLEL LINK	9858.00	1
5	LIFT SENSOR BRACKET	9856.01	1
6	BEARING HOUSING BRACKET	9859.00	1
7	ENCODER WHEEL SHAFT	9860.01	1
8	SEALED BEARING 6206-2RS1		1
9	ENCODER COVER	9862.00	1
10	PROXIMITY SENSOR PLUG	10122.00	1
11	BUSH	8185.02	8
12	AXLE FOR PARALLEL LINKS	8646.00	4
13	SPRING	6595.00	1
14	WHEEL CAP	9861.01	1
15	LOCK UP CATCH	9864.00	1
16	NPN PROXIMITY SENSOR	10121.00	1
17	ENCODER	9347.00	1
18	M12x75 BOLT BZP		4
19	M5x16 BOLT BZP		2
20	M8x25 BOLT BZP		4
21	M8x30 BOLT BZP		1
22	M8x40 BOLT BZP		1
23	30MM EXTERNAL CIRCLIP		1
24	M8x55 BOLT		1
25	62MM INTERNAL CIRCLIP		1
26	5MM SPRING PIN		2
27	M4x10 SET SCREW BZP		2
28	M8 HALF NUT BZP		1
29	M8 NUT BZP		1
30	M12 NYLOC NUT BZP		4
31	M5 NYLOC NUT BZP		2
32	M8 NYLOC NUT BZP		6
33	M12 WASHER BZP		4
34	M5 WASHER BZP		4
35	M8 WASHER BZP		9
36	M12x37ODx3 LARGE OD WASHER BZP		4
37	M8 SPRING WASHER BZP		1

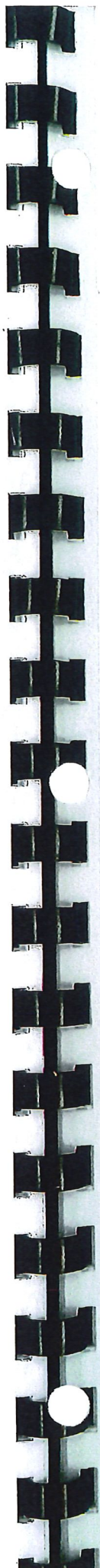
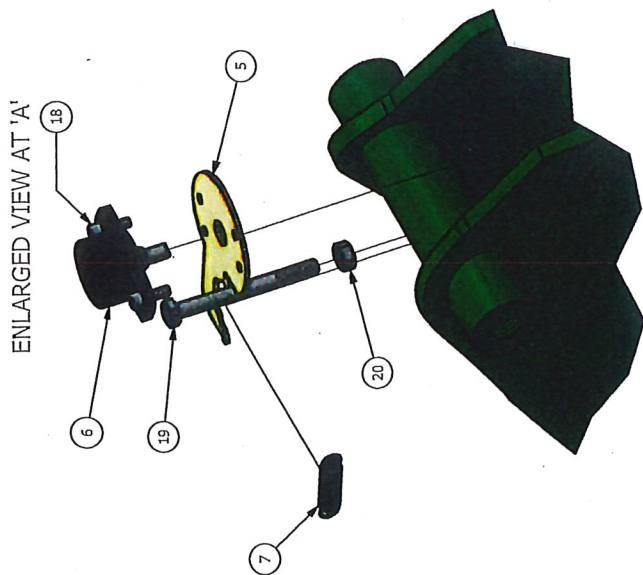
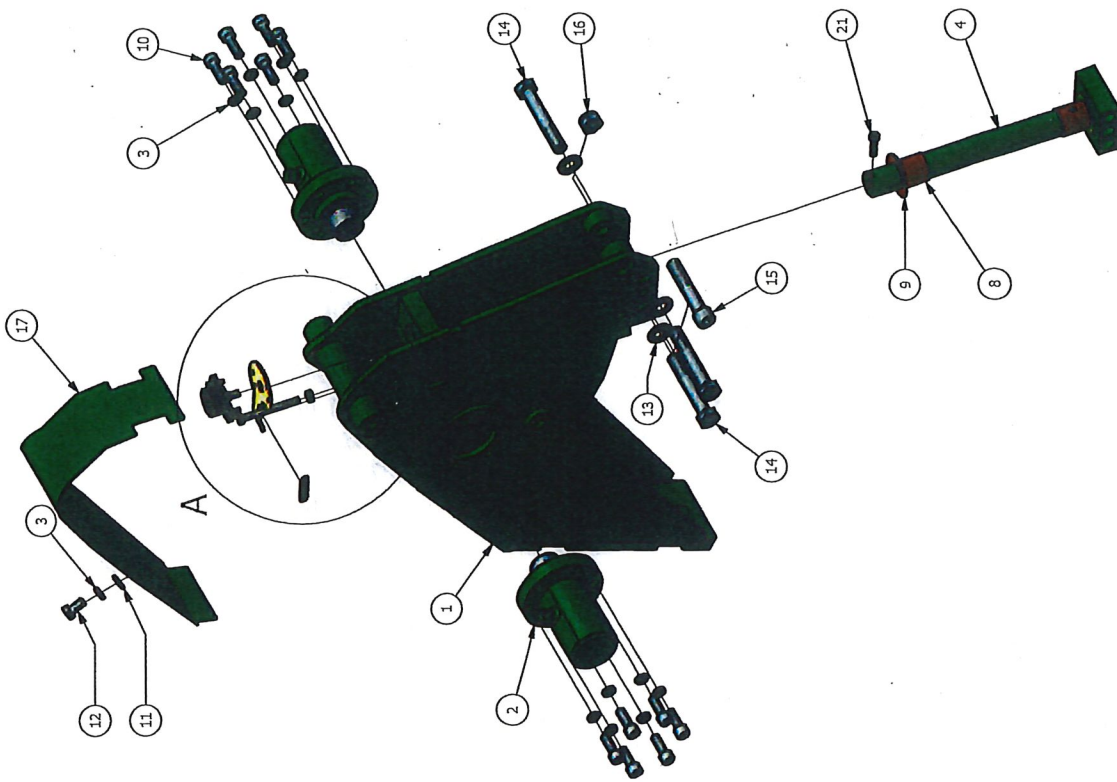


DISK STEER PIVOT LEG ASSEMBLY
AVAILABLE AS RIGHT AND LEFT HAND.
DRAWING SHOWS RIGHT HAND, SEE
PARTS LIST FOR PART VARIATIONS
ON ITEMS 1 & 12

ROBOCROP DISK STEER WHEEL ASSEMBLY

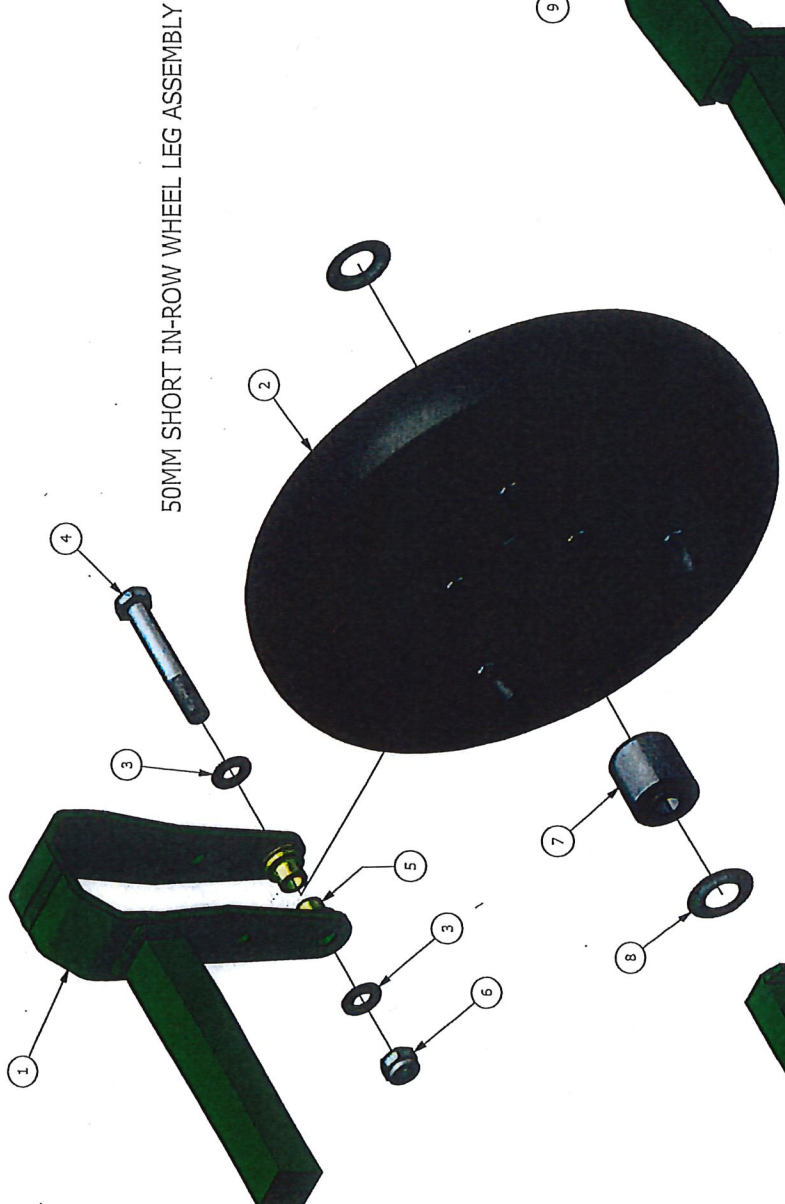
ITEM No.	DESCRIPTION	PART No.	QUANTITY
1	PIVOT LEG ASSEMBLY RIGHT HAND	9417.00	1
	PIVOT LEG ASSEMBLY LEFT HAND	9416.00	1
2	RAM ROLLER	8688.00	2
3	RAM ROLLER PINS	7726.00	2
4	M10 THIN WASHER BZP	7876	4
5	M12 THIN WASHER BZP	7877	4
6	M12 NYLOC NUT BZP	1017	2
7	WHEEL SCRAPER	9377.00	2
8	M10 FLAT WASHER BZP	1186	8
9	M10x30 BOLT BZP	5668	4
10	M10 NYLOC NUT BZP	1024	4
11	M12x45 BOLT BZP	1016	2
12	SCRAPER ARM RIGHT HAND	9420.00	1
	SCRAPER ARM LEFT HAND	9421.00	1
13	M16 CAPTIVE WHEEL NUT	9422.00	5
14	SPLIT PIN	7727.00	4
15	DISK STEER WHEEL	9415.00	1

8722 Betteravira 4 both wheel
9415 5/16" hole

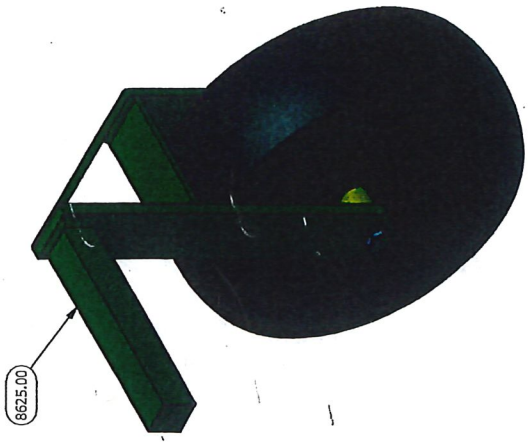


ROBOCROP DISK STEER MECHANISM

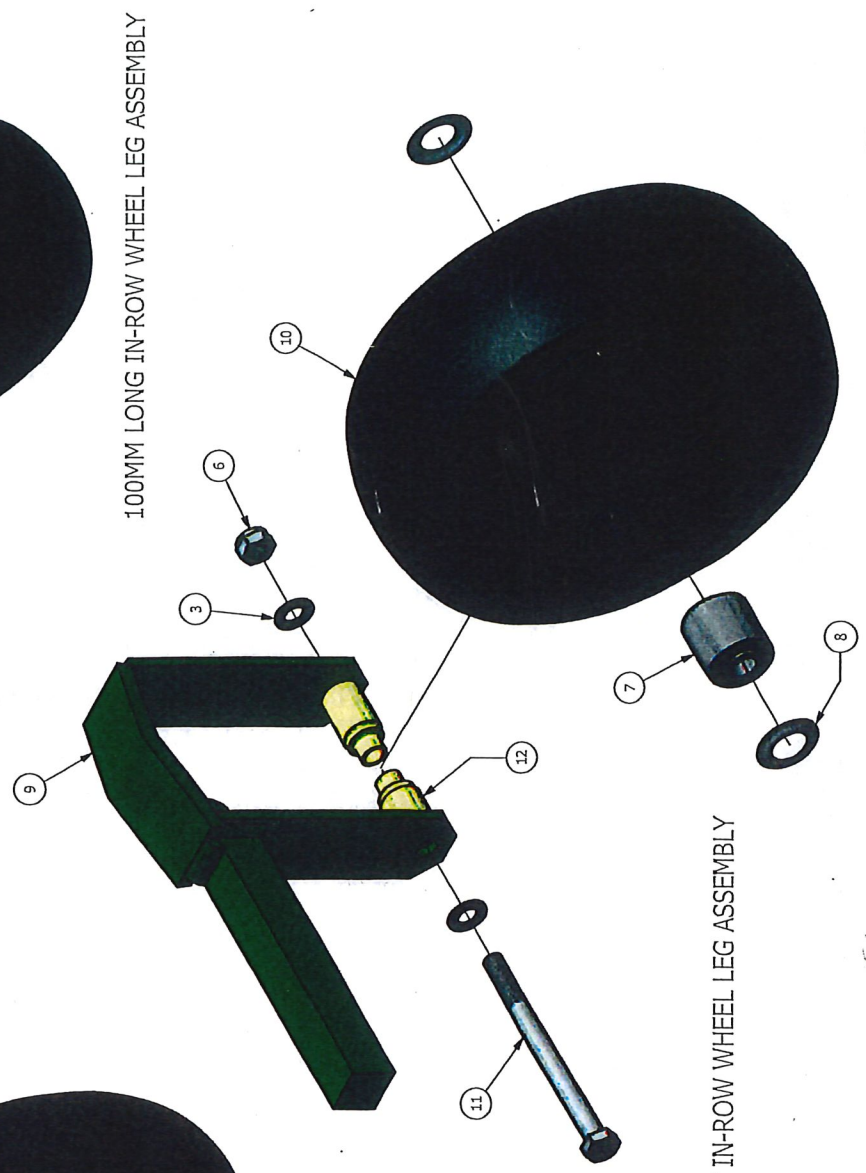
ITEM No.	DESCRIPTION	PART No.	QUANTITY
1	DISK STEER WHEEL FRAME	9722.00	1
2	HYDRAULIC STEERING ACTUATOR	8668.00	2
3	M8 SPRING WASHER BZP	1154	13
4	PIVOT PIN	8594.00	1
5	POTENTIOMETER MOUNTING PLATE	8675.00	1
6	ROTARY POTENTIOMETER	8674.00	1
7	TENSION SPRING	8676.00	1
8	BUSH	7446.00	2
9	THRUST WASER	8626.00	2
10	SOCKET CAP SCREW M8x25 BZP	6707	12
11	M8 THIN WASHER BZP	1157	1
12	M8x15 BOLT BZP	1156	1
13	M12 THIN WASHER	7877	3
14	M12x80 BOLT BZP	6371	3
15	SOCKET CAP SCREW M12x70 BZP	8827	1
16	M12 NYLOC NUT BZP	1017	1
17	STEERING GUARD	9723.01	1
18	M4x12 SOCKET CAP SCREW BZP		2
19	M6x60 BOLT BZP	8822	1
20	M6 NUT BZP	7712	1
21	SOCKET CAP SCREW M5x25 BZP	5705	1



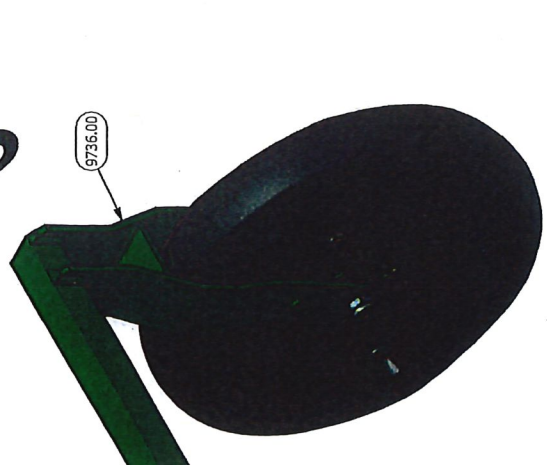
50MM SHORT IN-ROW WHEEL LEG ASSEMBLY



6625.00



100MM LONG IN-ROW WHEEL LEG ASSEMBLY



9736.00

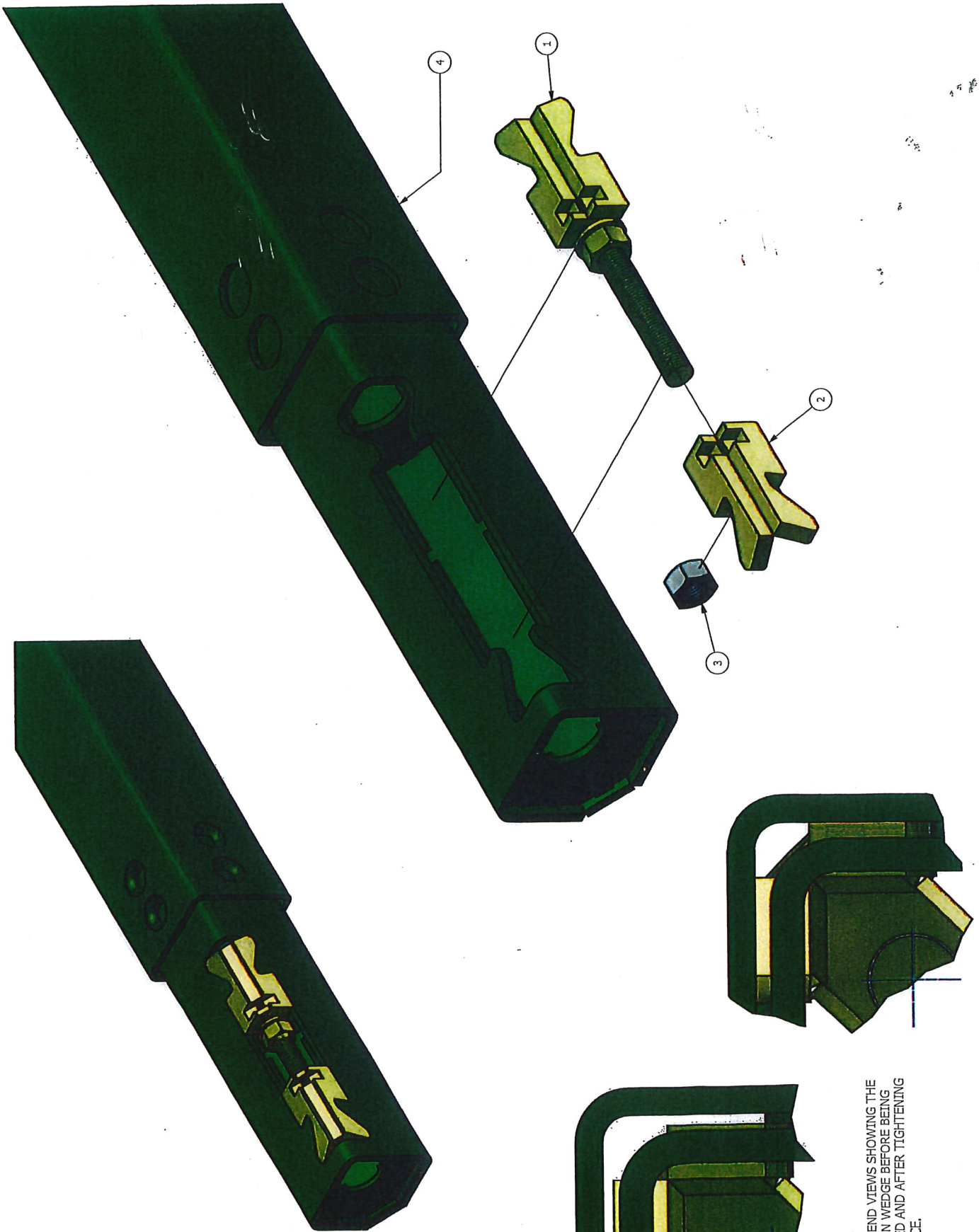
100MM SHORT IN-ROW WHEEL LEG ASSEMBLY

100MM LONG IN-ROW WHEEL LEG ASSEMBLY

ROBOCROP IN ROW WHEEL LEGS 50MM & 100MM

ITEM No.	DESCRIPTION	PART No.	QUANTITY
1	50MM SHORT LEG ASS'Y	9735.00	1
2	50MM WHEEL	9708.00	1
3	M12 THIN WASHER BZP	7877	2
4	M12x90 BOLT BZP	1178	1
5	WHEEL SPACER	9733.00	2
6	M12 NYLOC NUT	1017	1
7	WHEEL BEARING	9511.00	1
8	BEARING SHIELDS	9733.00	2
9	100MM SHORT LEG ASS'Y	8699.00	1
10	100MM WHEEL	9731.00	1
11	M12x150 BOLT BZP	6395	1
12	WHEEL SPACER	9749.00	2

10831

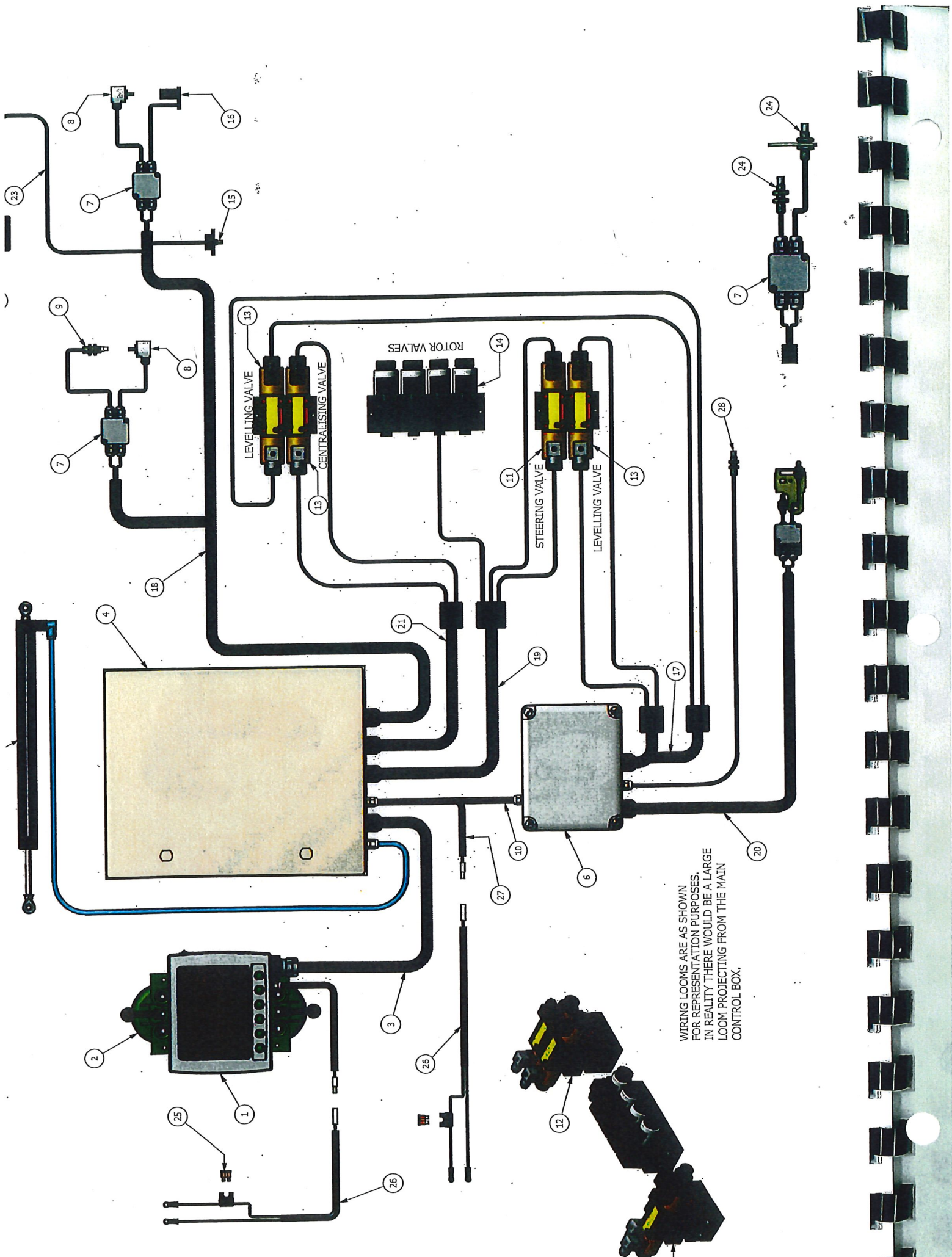


CROPPED END VIEWS SHOWING THE EXTENSION WEDGE BEFORE BEING TIGHTENED AND AFTER TIGHTENING INTO PLACE.



ROBOCROP PLUG IN FRAME EXTENSIONS

ITEM No.	DESCRIPTION	PART No.	QUANTITY
1	PLUG IN EXTENSION WEDGE	9048.00	1
2	PLUG IN FRAME WEDGE	9049.00	1
3	M16 NUT BZP	1015.00	1
4	PLUG IN FRAME EXTENSION	9047.02	1



WIRING LOOMS ARE AS SHOWN
 FOR REPRESENTATION PURPOSES.
 IN REALITY THERE WOULD BE A LARGE
 LOOM PROJECTING FROM THE MAIN
 CONTROL BOX.

ROBOCROP IN ROW CONTROL SYSTEM

ITEM No.	DESCRIPTION	PART No.	QUANTITY
1	CONSOLE	8500.00	1
2	VACUUM BRACKET	7447.00	1
3	CONSOLE TO CONTROL BOX LOOM	8550.00	1
4	INROW CONTROL BOX		1
5	POTENTIOMETER RAM		
	STANDARD DUTY	7732.00	1
	HEAVY DUTY	8227.00	1
6	LEVELLING SYSTEM		1
7	JUNCTION BOX (QTY DEPENDANT ON MACHINE SPEC)		
8	ENCODER	9347.00	
	1 OFF IS REQUIRED FOR THE LANDING WHEEL		
	EACH ROTOR REQUIRES 1 OFF		
9	NPN PROXIMITY SENSOR	9770.00	1
10	12v CABLE		1
11	STEERING VALVE	8858.00	
12	PILOT CHECK VALVE	8863.00	
13	LEVELLING / CENTRALISING VALVES	8860.00	
14	ROTOR VALVES	8587.00	
15	STEERING POTENTIOMETER	8674.00	1
16	GEAR TOOTH SENSOR	8311.00	
	1 OFF PER ROTOR		
17	WIRING LOOM		
18	WIRING LOOM		
19	WIRING LOOM		
20	WIRING LOOM		
21	WIRING LOOM		
22	FIREWIRE CAMERA, WIDE ANGLE 2.9 LENS	9709.00	1
23	CAMERA CABLE		1
24	PNP PROXIMITY SENSORS	6078.00	4
25	20A FUSE	7798.00	2
26	POWER CABLE	7797.00	2
27	12v POWER CABLE FROM CONTROL BOX		1
28	LEVELLING SYSTEM REED SWITCH	7673.00	1

VALVE QUANTITY'S ARE DEPENDANT ON MACHINE SPECIFICATION

Looms micro to console

S-S 10581

S-G 11516

G-G 11517

Camera loom

800153

800157