



POWER TAKE OFF "METRIC"



Series

10 - 20 - 30 - 40

50 - 60 - 80 - 90



Version 4

September 2006

Copyright © Les Machineries Pronovost Inc., 2006

All rights reserved.

Printed in Canada.



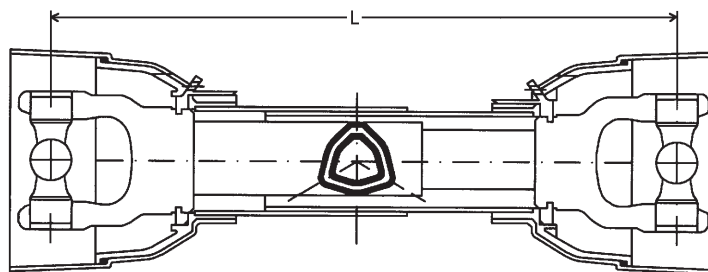
TABLE OF CONTENTS

| Item | Page |
|---|------|
| Parts List | |
| Power take off (central part) | 4 |
| U-joints | 5 |
| Round bore end yoke | 6 |
| Quick disconnect end yoke | 7 |
| Shear bolt torque limiter quick disconnect type | 8 |
| Shear bolt torque limiter with interfering bolt | 9 |
| Friction clutch | 10 |
| Yokes for tubes "T" series | 11 |
| Tubes "T" series | 12 |
| Stoppers for tubes | 13 |
| "V" series parts | 14 |
| "E" series parts | 15 |
| Shields | 16 |
| Shield parts | 17 |
| Power take off with «CV80» joint (central part) | 18 |
| «CV80» joints | 19 |
| «CV80» U-joints | 19 |
| Push pin | 20 |
| Bolts chart | 21 |
| Friction plate chart | 21 |



POWER TAKE OFF

CENTRAL PART



COMPLETE CENTRAL PART (Shield included, without end yokes)

| SERIE | HP | | L* | | | | |
|-------|---------|----------|----------|----------|----------|----------|----------|
| | 540 RPM | 1000 RPM | 56 cm | 71 cm | 91 cm | 121 cm | 171 cm |
| 20 | 21 | 31 | T20-056P | T20-071P | T20-091P | T20-121P | ... |
| 40 | 35 | 55 | T40-056P | T40-071P | T40-091P | T40-121P | ... |
| 50 | 47 | 74 | ... | T50-071P | T50-091P | T50-121P | ... |
| 60 | 64 | 100 | ... | T60-071P | T60-091P | T60-121P | ... |
| 80 | 95 | 150 | ... | T80-071P | T80-091P | T80-121P | T80-171P |
| 90 | 120 | 190 | ... | T90-071P | ... | ... | ... |

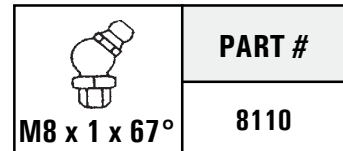
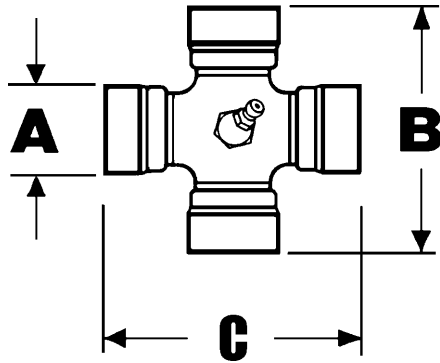
N.B. To complete the power take off, you must choose **two end yokes** and add to the price of the «COMPLETE CENTRAL PART».

HALF CENTRAL PART (Shield included, without end yoke)

| SERIE | SIDE | L* | | | | |
|-------|-------|--------------|--------------|--------------|--------------|--------------|
| | | 56 cm | 71 cm | 91 cm | 121 cm | 171 cm |
| 20 | Inner | T20-056P-INT | T20-071P-INT | T20-091P-INT | T20-121P-INT | ... |
| | Outer | T20-056P-EXT | T20-071P-EXT | T20-091P-EXT | T20-121P-EXT | ... |
| 40 | Inner | T40-056P-INT | T40-071P-INT | T40-091P-INT | T40-121P-INT | ... |
| | Outer | T40-056P-EXT | T40-071P-EXT | T40-091P-EXT | T40-121P-EXT | ... |
| 50 | Inner | ... | T50-071P-INT | T50-091P-INT | T50-121P-INT | ... |
| | Outer | ... | T50-071P-EXT | T50-091P-EXT | T50-121P-EXT | ... |
| 60 | Inner | ... | T60-071P-INT | T60-091P-INT | T60-121P-INT | ... |
| | Outer | ... | T60-071P-EXT | T60-091P-EXT | T60-121P-EXT | ... |
| 80 | Inner | ... | T80-071P-INT | T80-091P-INT | T80-121P-INT | T80-171P-INT |
| | Outer | ... | T80-071P-EXT | T80-091P-EXT | T80-121P-EXT | T80-171P-EXT |
| 90 | Inner | ... | T90-071P-INT | ... | ... | ... |
| | Outer | ... | T90-071P-EXT | ... | ... | ... |

N.B. To complete the half power take off, you must choose **one end yoke** and add its price to the «HALF CENTRAL PART».

* Other lengths available upon request.



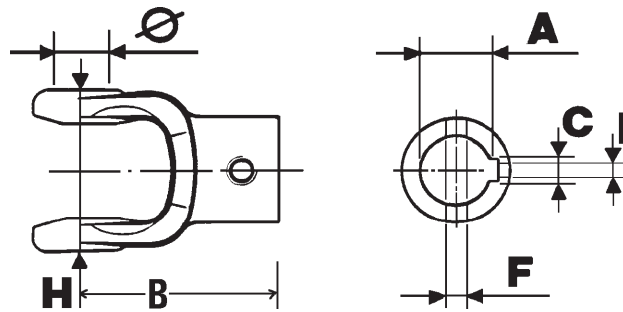
| SERIE | A (mm) | B and C (mm) | PART # (standard) | PART # (HD category) |
|-------|--------|--------------|-------------------|----------------------|
| 10 | 22.0 | 54.0 | 6590 | ... |
| 20 | 23.8 | 61.3 | 6208 | ... |
| 30 | 27.0 | 70.0 | 6572 | ... |
| 40 | 27.0 | 74.6 | 6239 | 6239-HD |
| 50 | 30.2 | 80.0 | 8073 | 8073-HD |
| 60 | 30.2 | 92.0 | 8238 | 8238-HD |
| 70 | 30.2 | 106.5 | 8309 | ... |
| 80 | 35.0 | 106.5 | 9208 | 9208-HD |
| 90 | 41.0 | 108.0 | 9477 | ... |
| 110 | 41.0 | 118.0 | 9502 | ... |

«CV80»

| SERIE | A (mm) | B (mm) | C (mm) | PART # |
|-------|--------|--------|--------|---------|
| 20CV | 23.8 | 74.1 | 82.1 | 6208-CV |
| 40CV | 27.0 | 85.8 | 91.2 | 6239-CV |
| 60CV | 30.2 | 95.4 | 101.4 | 8238-CV |
| 80CV | 34.9 | 106.3 | 113.8 | 9208-CV |



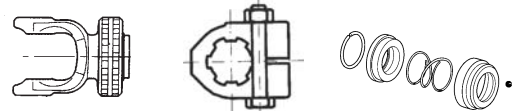
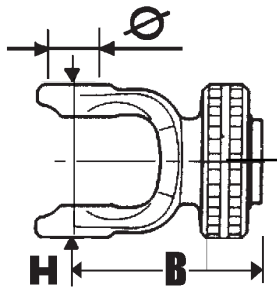
ROUND BORE END YOKE



| SERIE | A Bore | B | H (mm) | Ø (mm) | F Bolt hole | C Key way | I Set screw | PART # |
|-----------|-----------|----------|--------|--------|----------------|--------------|----------------|---------------|
| 10 | 3/4" | ... | ... | 22.0 | 1/4" | 3/16" | 1/4"-20 | 6595 |
| | 1" | ... | ... | 22.0 | 1/4" | 1/4" | 1/4"-20 | 6596 |
| | 1 1/4" | ... | ... | 22.0 | 5/16" | ... | ... | 6596-1 |
| 20 | 1" | 3 5/32" | 70.0 | 23.8 | 0.275 | 1/4" | 1/4"-20 | 6215 |
| | 1 1/4" | 3 5/32" | 70.0 | 23.8 | 5/16" | 1/4" | 3/8"-16 | 6229 |
| | 30 mm | 3 5/32" | 70.0 | 23.8 | 7 mm | 5/16" | 1/4"-20 | 6215-1 |
| 40 | 1" | 3 39/64" | 84.0 | 27.0 | 5/16" | 1/4" | 5/16" | 6223-3 |
| | 1 1/4" | 3 39/64" | 84.0 | 27.0 | 5/16" | 1/4" | 3/8"-16 | 6223-4 |
| | 1 1/4" | 3 39/64" | 84.0 | 27.0 | 5/16" | 5/16" | 3/8"-16 | 6223-2 |
| | 1 3/8" | 3 39/64" | 84.0 | 27.0 | 5/16" | 5/16" | 3/8"-16 | 6223-1 |
| | 1 1/2" | 3 39/64" | 84.0 | 27.0 | 5/16" | 3/8" | 3/8"-16 | 6223 |
| 50 | 1 1/4" | 3 13/16" | 91.0 | 30.2 | 5/16" | 1/4" | 3/8"-16 | 8080-2 |
| | 1 3/8" | 3 13/16" | 91.0 | 30.2 | 5/16" | 5/16" | 3/8"-16 | 8080-1 |
| | 1 1/2" | 3 13/16" | 91.0 | 30.2 | 5/16" | 3/8" | 3/8"-16 | 8080 |
| 60 | 1 1/4" | 4 3/32" | 103.0 | 30.2 | 5/16" | 5/16" | 3/8"-16 | 8260 |
| | 1 3/8" | 4 3/32" | 103.0 | 30.2 | 5/16" | 5/16" | 3/8"-16 | 8261 |
| | 1 1/2" | 4 3/32" | 103.0 | 30.2 | 5/16" | 3/8" | 3/8"-16 | 8262 |
| | 1 3/4" | 4 3/32" | 103.0 | 30.2 | 5/16" | 3/8" | 3/8"-16 | 8263 |
| 80 | 1 3/8" | 4 9/16" | 117.0 | 35.0 | 5/16" | 5/16" | 3/8"-16 | 9223-2 |
| | 1 1/2" | 4 9/16" | 117.0 | 35.0 | 3/8" | 3/8" | 3/8"-16 | 9223-1 |
| | 1 3/4" | 4 9/16" | 117.0 | 35.0 | 3/8" | 3/8" | 3/8"-16 | 9223 |
| | 2" | 4 9/16" | 117.0 | 35.0 | 3/8" | 1/2" | 3/8"-16 | 9215 |
| 90 | 1 3/4" | 4 7/8" | 118.0 | 41.0 | 3/8" | 3/8" | 3/8"-16 | 9574 |



QUICK DISCONNECT END YOKE

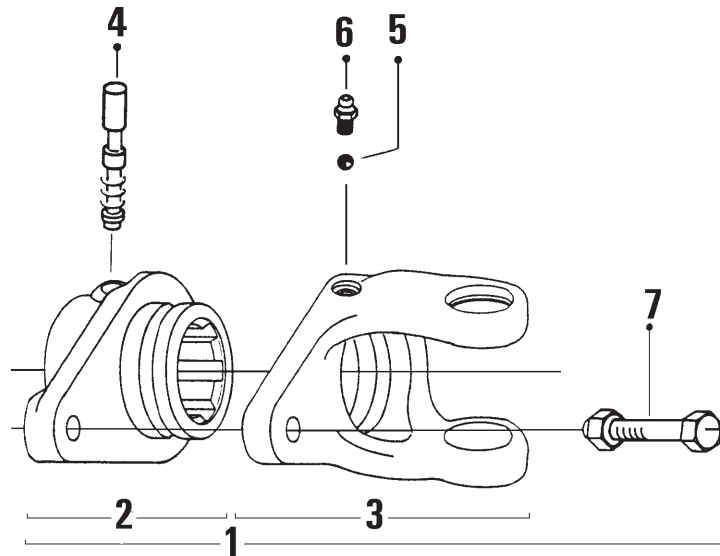


| SERIE | | B | H (mm) | Ø (mm) | PART # Quick disconnect | PART # Interfering clamp bolt | PART # Slide collar repair kit |
|------------|-------------|----------|--------|--------|-------------------------------|-------------------------------------|--------------------------------------|
| 10 | 1 3/8" - 6 | --- | --- | 22.0 | 6597 | --- | 8363 |
| | 1 3/8" - 21 | --- | --- | 22.0 | 6598 | --- | 8363 |
| 20 | 1 3/8" - 6 | 3 57/64" | 70.0 | 23.8 | 6409 | --- | 8363 |
| | 1 3/8" - 21 | 3 57/64" | 70.0 | 23.8 | 6409-1 | --- | 8363 |
| 30 | 1 3/8" - 6 | 3 15/16" | 80.0 | 27.0 | 6573 | --- | 8363 |
| 40 | 1 3/8" - 6 | 4 7/32" | 84.0 | 27.0 | 6354 | --- | 8363 |
| | 1 3/8" - 21 | 4 7/32" | 84.0 | 27.0 | 6354-1 | --- | 8363 |
| 50 | 1 3/8" - 6 | 4 19/64" | 91.0 | 30.2 | 8113 | 8113-BS | 8363 |
| | 1 3/8" - 21 | 4 19/64" | 91.0 | 30.2 | 8113-1 | --- | 8363 |
| 60 | 1 3/8" - 6 | 4 9/16" | 103.0 | 30.2 | 8250 | 8250-BS | 8363 |
| | 1 3/8" - 21 | 4 9/16" | 103.0 | 30.2 | 8250-1 | 8250-1-BS | 8363 |
| | 1 3/4" - 20 | 4 7/8" | 103.0 | 30.2 | 8250-3 | 8250-3-BS | 8364 |
| 80 | 1 3/8" - 6 | 4 7/8" | 117.0 | 35.0 | 9455 | 9455-BS | 8363 |
| | 1 3/8" - 21 | 4 7/8" | 117.0 | 35.0 | 9463 | 9463-BS | 8363 |
| | 1 3/4" - 6 | 5 3/64" | 117.0 | 35.0 | 9465 | 9465-BS | 8364 |
| | 1 3/4" - 20 | 5 3/64" | 117.0 | 35.0 | 9224 | 9224-BS | 8364 |
| 90 | 1 3/8" - 6 | 4 7/8" | 118.0 | 41.0 | 9481 | 9481-BS | 8363 |
| | 1 3/8" - 21 | 4 7/8" | 118.0 | 41.0 | 9482 | 9482-BS | 8363 |
| | 1 3/4" - 6 | 5 3/64" | 118.0 | 41.0 | 9573 | 9573-BS | 8364 |
| | 1 3/4" - 20 | 5 3/64" | 118.0 | 41.0 | 9483 | 9483-BS | 8364 |
| 110 | 1 3/4" - 20 | 4 7/16" | 130.5 | 41.0 | 9510 | --- | --- |

Ball for slide collar = # 8378



SHEAR BOLT TORQUE LIMITER (Quick disconnect)



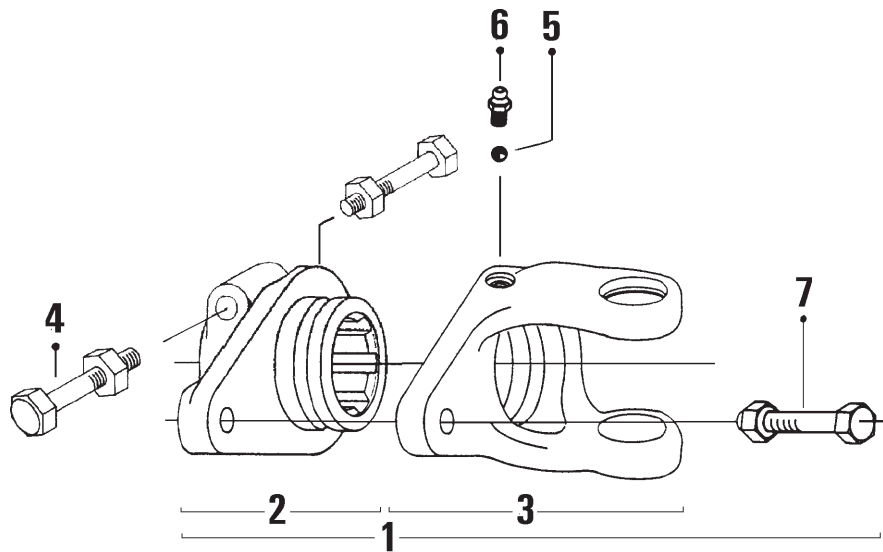
| SERIE | | 1 Complete | 2 Adaptor | 3 Yoke | 4 Push pin ¹ | 5 Balls/Qty | 6 Grease fitting | 7 Shear bolt ² |
|-----------|-------------|---------------|--------------|-----------|----------------------------------|----------------|---------------------|------------------------------|
| 10 | 1 3/8" - 6 | 6599 | 6600 | 6601 | 8068 or 8068-E | 6205/24 | 8071 | 6207 |
| | 1 3/8" - 21 | 6201 | 6202 | 6204 | 8068 or 8068-E | 6205/24 | 8071 | 6207 |
| 20 | 1 3/8" - 6 | 6201-1 | 6202-1 | 6204 | 8068 or 8068-E | 6205/24 | 8071 | 6207 |
| | 1 3/8" - 21 | 6232 | 6233 | 6235 | 8068 or 8068-E | 8070/23 | 8071 | 6238 |
| 40 | 1 3/8" - 6 | 6232-1 | 6233-1 | 6235 | 8068 or 8068-E | 8070/23 | 8071 | 6238 |
| | 1 3/8" - 21 | 8066 | 8067 | 8069 | 8068 or 8068-E | 8070/23 | 8071 | 8072 |
| 50 | 1 3/8" - 6 | 8066-1 | 8067-1 | 8069 | 8068 or 8068-E | 8070/23 | 8071 | 8072 |
| | 1 3/8" - 21 | 8237-1 | 8243-1 | 8244 | 8068 | 9205/24 | 8071-1 | 8218 |
| 60 | 1 3/8" - 6 | 8237-2 | 8243-2 | 8244 | or | 9205/24 | 8071-1 | 8218 |
| | 1 3/4" - 20 | 8237-3 | 8243-3 | 8244 | 8068-E | 9205/24 | 8071-1 | 8218 |
| 80 | 1 3/8" - 6 | 9201 | 9202 | 9204 | 8068 or 9336 or 9377 | 9205/24 | 8071-1 | 9207 |
| | 1 3/8" - 21 | 9201-1 | 9202-1 | 9204 | | 9205/24 | 8071-1 | 9207 |
| | 1 3/4" - 6 | 9201-2 | 9202-2 | 9204 | | 9205/24 | 8071-1 | 9207 |
| | 1 3/4" - 20 | 9201-3 | 9202-3 | 9204 | | 9205/24 | 8071-1 | 9207 |
| 90 | 1 3/8" - 6 | 9476-3 | 9486-3 | 9487 | 8068 or 9336 or 9377 | 9205/24 | 8071-1 | 9207 |
| | 1 3/8" - 21 | 9476-4 | 9486-4 | 9487 | 9336 or 9377 | 9205/24 | 8071-1 | 9207 |
| | 1 3/4" - 20 | 9476-5 | 9486-5 | 9487 | 9377 | 9205/24 | 8071-1 | 9207 |

¹ See push pin chart page 20

² See bolts chart page 21



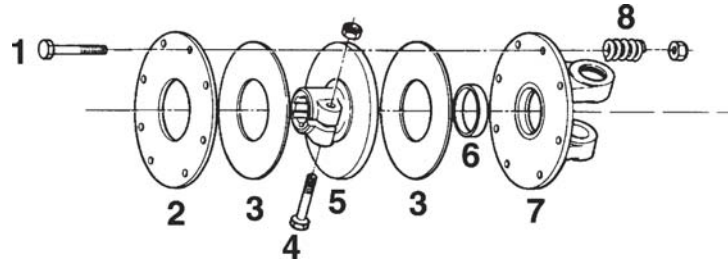
SHEAR BOLT TORQUE LIMITER (Interfering bolt)



| SERIE | | 1 Complete | 2 Adaptor | 3 Yoke | 4 Lock bolt ¹ | 5 Balls/Qty | 6 Grease fitting | 7 Shear bolt ¹ |
|-----------|-------------|---------------|--------------|-----------|----------------------------------|----------------|------------------------|---------------------------------|
| 40 | 1 3/8" - 6 | 6232-2 | 6233-2 | 6235 | 8222 | 8070/23 | 8071 | 6238 |
| 50 | 1 3/8" - 6 | 8221 | 8223 | 8069 | 8222 | 8070/23 | 8071 | 8072 |
| 60 | 1 3/8" - 6 | 8237 | 8243 | 8244 | 8222 | 9205/24 | 8071-1 | 8218 |
| 80 | 1 3/8" - 6 | 9464 | 9458-1 | 9204 | 8222 or 9461 or 9662 | 9205/24 | 8071-1 | 9207 |
| | 1 3/8" - 6 | 9464-2 | 9458-2 | 9572 | | 9205/24 | 8071-1 | 8218 |
| | 1 3/4" - 20 | 9453 | 9458 | 9204 | | 9205/24 | 8071-1 | 9207 |
| | 1 3/4" - 20 | 9570 | 9571 | 9572 | | 9205/24 | 8071-1 | 8218 |
| 90 | 1 3/8" - 6 | 9476-1 | 9486-1 | 9487 | 8222 or 9461 or 9662 | 9205/24 | 8071-1 | 9207 |
| | 1 3/8" - 21 | 9476-2 | 9486-2 | 9487 | | 9205/24 | 8071-1 | 9207 |
| | 1 3/4" - 20 | 9476 | 9486 | 9487 | | 9205/24 | 8071-1 | 9207 |

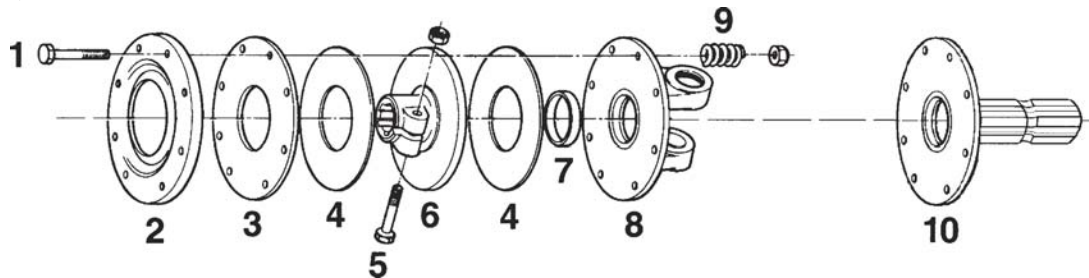
¹ See bolts chart page 21

F1



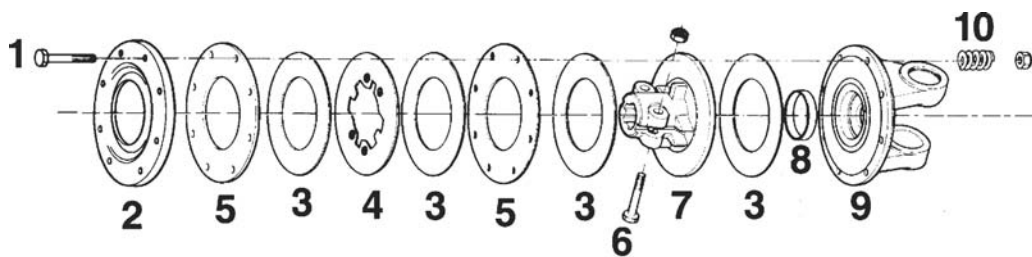
| SERIE | Complete | 1 | 2 | 3 ¹ | 4 | 5 | 6 | 7 | 8 | |
|-----------|----------|-------------|------|----------------|------|------|------|------|------|------|
| 40 | 1 3/8"-6 | 8310 | 8311 | 8312 | 8313 | 9207 | 8314 | 8315 | 8316 | 8317 |

F2



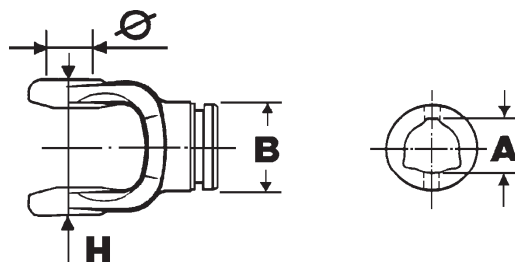
| SERIE | Complete | 1 | 2 | 3 | 4 ¹ | 5 | 6 | 7 | 8 | 9 | 10 | |
|-----------|-----------|---------------|------|------|----------------|------|------|--------|------|------|------|------|
| 50 | 1 3/8"-6 | 8319 | 8325 | 8326 | 8327 | 8328 | 9207 | 8329 | 8330 | 8331 | 8332 | ... |
| | 1 3/8"-6 | 8320 | 8325 | 8326 | 8327 | 8328 | 9207 | 8329 | 8330 | ... | 8332 | 8333 |
| 60 | 1 3/8"-6 | 8321 | 8325 | 8326 | 8327 | 8328 | 9207 | 8334 | 8330 | 8337 | 8332 | ... |
| | 1 3/8"-21 | 8322 | 8325 | 8326 | 8327 | 8328 | 9207 | 8335 | 8330 | 8337 | 8332 | ... |
| 80 | 1 3/8"-6 | 8323 | 8325 | 8326 | 8327 | 8328 | 9207 | 8336 | 8330 | 8338 | 8332 | ... |
| | 1 3/8"-20 | 8323-1 | 8325 | 8326 | 8327 | 8328 | 9207 | 8336-1 | 8330 | 8338 | 8332 | ... |

F4



| SERIE | Complete | 1 | 2 | 3 ¹ | 4 | 5 | 6 | 7 | 8 | 9 | 10 | |
|-----------|-----------|---------------|------|----------------|------|------|------|------|--------|------|------|------|
| 60 | 1 3/8"-6 | 8321-1 | 8341 | 8326 | 8328 | 8339 | 8327 | 9207 | 8340-2 | 8330 | 8337 | 8317 |
| 80 | 1 3/8"-6 | 8324 | 8341 | 8326 | 8328 | 8339 | 8327 | 9207 | 8340 | 8330 | 8338 | 8317 |
| | 1 3/4"-6 | 8347 | 8341 | 8326 | 8328 | 8339 | 8327 | 9515 | 8340-1 | 8330 | 8338 | 8317 |
| | 1 3/4"-20 | 8347-2 | 8341 | 8326 | 8328 | 8339 | 8327 | 9515 | 8340-2 | 8330 | 8338 | 8317 |
| 90 | 1 3/4"-6 | 9683 | 8341 | 8326 | 8328 | 8339 | 8327 | 9515 | 8340-1 | 8330 | 8338 | 8317 |
| | 1 3/4"-20 | 9683-1 | 8341 | 8326 | 8328 | 8339 | 8327 | 9515 | 8340-2 | 8330 | 8338 | 8317 |

¹ See friction plate dimensions on page 21

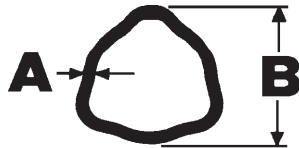


YOKE FOR INNER TUBE

| SERIE | A (mm) | B (mm) | H (mm) | Ø (mm) | PART # |
|-------------------|--------|--------|--------|--------|--------|
| 10 | 26.5 | ... | ... | 22.0 | 6602 |
| 20 | 29.0 | 47.0 | 70.0 | 23.8 | 6434 |
| 30 | 36.0 | 54.0 | 80.0 | 27.0 | 6575 |
| 40 | 36.0 | 54.0 | 84.0 | 27.0 | 6353 |
| 50 | 45.0 | 61.0 | 91.0 | 30.2 | 8079 |
| 60 | 45.0 | 67.0 | 103.0 | 30.2 | 8239 |
| 80 B&P and new EG | 54.0 | 76.0 | 117.0 | 35.0 | 9214 |
| 80 old EG | 45.0 | 66.0 | 117.0 | 35.0 | 9214-E |
| 90 | 54.0 | 76.0 | 118.0 | 41.0 | 9479 |
| 110 | 54.0 | 76.0 | 130.5 | 41.0 | 9509 |

YOKE FOR OUTER TUBE

| SERIE | A (mm) | B (mm) | H (mm) | Ø (mm) | PART # |
|-------------------|--------|--------|--------|--------|--------|
| 10 | 32.5 | ... | ... | 22.0 | 6603 |
| 20 | 36.0 | 54.0 | 70.0 | 23.8 | 6430 |
| 30 | 43.5 | 61.0 | 80.0 | 27.0 | 6574 |
| 40 | 43.5 | 61.0 | 84.0 | 27.0 | 6340 |
| 50 | 51.6 | 70.0 | 91.0 | 30.2 | 8074 |
| 60 | 54.0 | 76.0 | 103.0 | 30.2 | 8240 |
| 80 B&P and new EG | 63.0 | 88.0 | 117.0 | 35.0 | 9209 |
| 80 old EG | 54.0 | 74.0 | 117.0 | 35.0 | 9209-E |
| 90 | 63.0 | 88.0 | 118.0 | 41.0 | 9480 |
| 110 | 66.0 | 88.0 | 130.5 | 41.0 | 9504 |



| SERIE | | A (mm) | B (mm) | PART # | |
|------------|----------------------|--------|--------|------------------|-------------|
| 10 | Inner | 3.5 | 26.5 | 6593-CM | ... |
| | Outer | 2.6 | 32.5 | 6594-CM | ... |
| 20 | Inner | 4.0 | 29.0 | 6432-CM | ... |
| | Outer | 3.2 | 36.0 | 6431-CM | 6613 |
| 30 | Inner | 3.2 | 36.0 | 6431-CM | ... |
| | Outer | 3.4 | 43.5 | 6342-CM | ... |
| 40 | Inner | 4.5 | 36.0 | 6343-CM | ... |
| | Outer | 3.4 | 43.5 | 6342-CM | 6614 |
| 50 | Inner | 4.0 | 45.0 | 8077-CM | ... |
| | Outer | 3.0 | 51.6 | 8076-CM | 8365 |
| 60 | Inner | 4.0 | 45.0 | 8077-CM | ... |
| | Outer | 4.0 | 54.0 | 9212-CM | 8366 |
| 80 | Inner B&P and new EG | 4.0 | 54.0 | 9212-CM | ... |
| | Outer old EG | 4.0 | 54.0 | 9212-CM | ... |
| | Outer B&P and new EG | 4.0 | 63.0 | 9211-CM | 9669 |
| | Inner old EG | 5.5 | 45.0 | 9212-E-CM | ... |
| 90 | Inner | 4.0 | 54.0 | 9212-CM | ... |
| | Outer | 4.0 | 63.0 | 9211-CM | 9669 |
| 110 | Inner B&P | 6.3 | 54.6 | 9507 | ... |
| | Outer B&P | 5.3 | 66.0 | 9506 | ... |

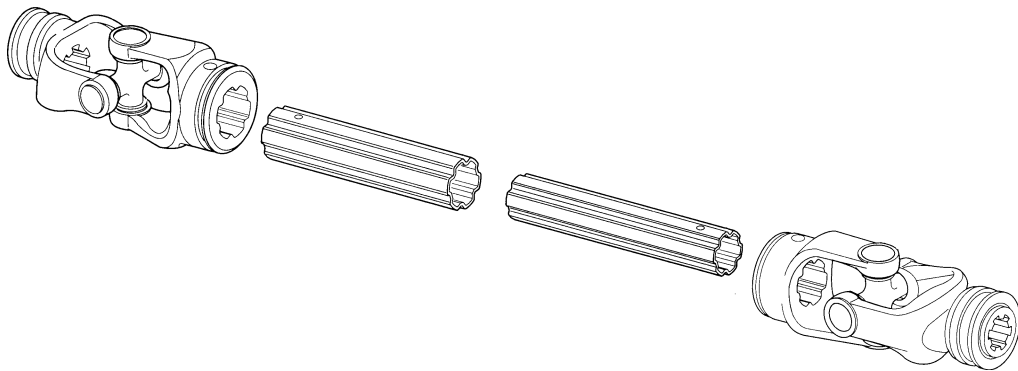
N.B. ⇒ Length of 300 cm.



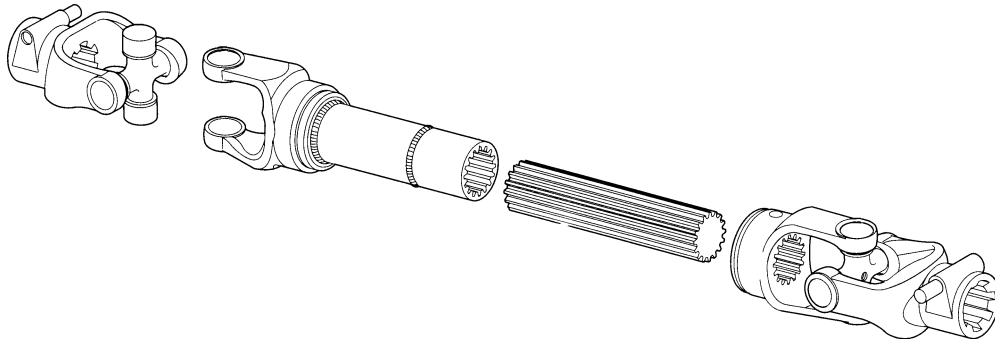
STOPPERS FOR TUBES



| FOR SERIE | | A (mm) | B (mm) | PART # |
|------------|----------------------|--------|--------|---------------|
| 20 | Inner | 8.0 | 50.0 | 6433 |
| | Outer | 8.0 | 55.0 | 6344 |
| 40 | Inner | 8.0 | 55.0 | 6344 |
| | Outer | 8.0 | 60.0 | 6341 |
| 50 | Inner old EG | 8.0 | 60.0 | 6341 |
| | Outer old EG | 8.0 | 70.0 | 8142 |
| | Inner B&P and new EG | 10.0 | 60.0 | 8078 |
| | Outer B&P and new EG | 10.0 | 70.0 | 8075 |
| 60 | Inner EG | 10.0 | 70.0 | 8075 |
| | Outer EG | 10.0 | 80.0 | 9210-E |
| 80 | Inner old EG | 10.0 | 70.0 | 8075 |
| | Outer old EG | 10.0 | 80.0 | 9210-E |
| | Inner B&P and new EG | 12.0 | 80.0 | 9213 |
| | Outer B&P and new EG | 12.0 | 90.0 | 9210 |
| 90 | Inner | 12.0 | 90.0 | 9210 |
| | Outer | 12.0 | 90.0 | 9210 |
| 110 | Inner | 12.0 | 90.0 | 9210 |
| | Outer | 12.0 | 100.0 | 9505 |

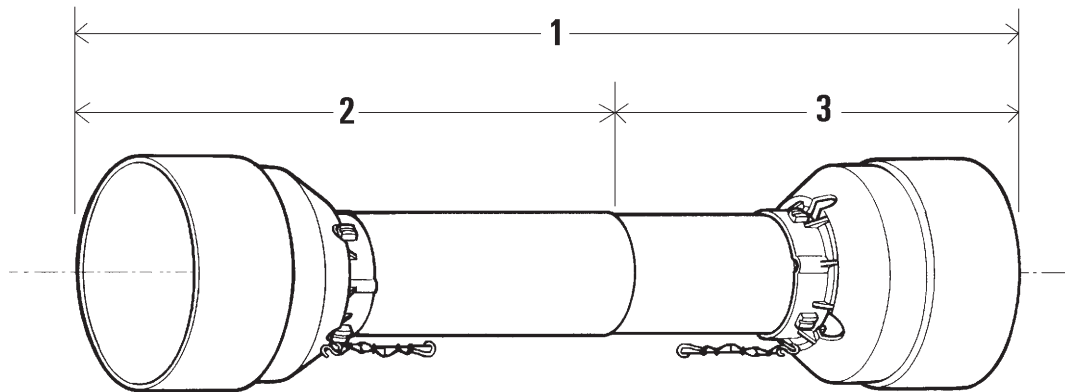


| Serie | U-joint | Yoke for outer tube | Outer tube | Inner tube | Yoke for inner tube |
|-----------|----------|---------------------|------------|------------|---------------------|
| 40 | 6239 | 6609 | 6610 | 6611 | 6612 |
| 50 | 8073 | 8357 | 8358 | 8359 | 8360 |
| 60 | 8238 | 8361 | 8358 | 8359 | 8362 |
| 80 | 9208 | 9667 | 9601 | 9602 | 9668 |
| 90 | 9477 | 9600 | 9601 | 9602 | 9603 |



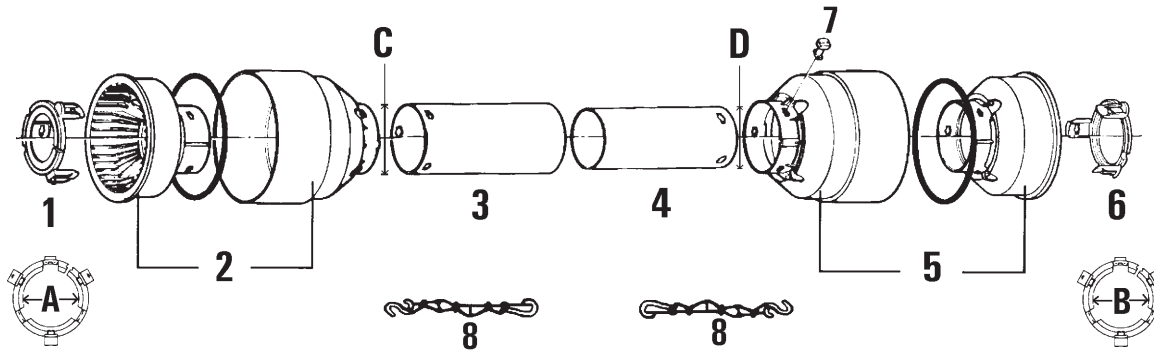
| Serie | U-joint | Yoke for outer tube | Outer tube * | Splined sleeve * | Inner shaft * | Yoke for inner shaft |
|-----------|------------------|---------------------------------|-----------------|------------------|-----------------|-------------------------------|
| 40 | Ø27 74,6 | 91,5 77,2 27 ø42 | 4 50 | Ø30 Z=10 | Ø30 Z=10 | 91,5 77,2 24 27 |
| | 6239 | 6607 | | | | 6608 |
| 50 | Ø30,2 80 | 97 82,6 30,2 ø42 | 4 50 | Ø35 Z=12 | Ø35 Z=12 | 97 82,6 24 30,2 |
| | 8073 | 8353 | | | | 8354 |
| 60 | Ø30,2 92 | 104 94,6 30,2 ø42 | 4 50 | Ø35 Z=12 | Ø35 Z=12 | 104 94,6 24 30,2 |
| | 8238 | 8355 | | | | 8356 |
| 80 | Ø35 106,5 | 120 109,6 35 ø50 | 5 60 | Ø40 Z=14 | Ø40 Z=14 | 116 109,6 24 35 |
| | 9208 | 9663 | | | | 9664 |
| 90 | Ø41 108 | 124 111,6 41 ø52,5 | 5,5 63,5 | Ø45 Z=16 | Ø45 Z=16 | 124 111,6 27 41 |
| | 9477 | 9665 | | | | 9666 |

* Parts on request.



| SERIE | Length ¹ | 1 Complete shield | 2 Outer shield | 3 Inner shield |
|-------------------------------|---------------------|----------------------|-------------------|-------------------|
| 20 | 56 cm | 6222 | 6220 | 6221 |
| | 121 cm | 6222-121 | 6220-121 | 6221-121 |
| 40 | 71 cm | 6352 | 6350 | 6351 |
| | 121 cm | 6352-121 | 6350-121 | 6351-121 |
| 50 | 71 cm | 8087 | 8085 | 8086 |
| | 121 cm | 8087-121 | 8085-121 | 8086-121 |
| 60 and 80 old EG | 71 cm | 8249 | 8248 | 8247 |
| | 121 cm | 8249-121 | 8248-121 | 8247-121 |
| 80 and 90 | 71 cm | 9222 | 9220 | 9221 |
| | 91 cm | 9222-091 | 9220-091 | 9221-091 |
| | 121 cm | 9222-121 | 9220-121 | 9221-121 |
| | 171 cm | 9222-171 | 9220-171 | 9221-171 |
| 100 | 71 cm | 9521 | 9519 | 9520 |

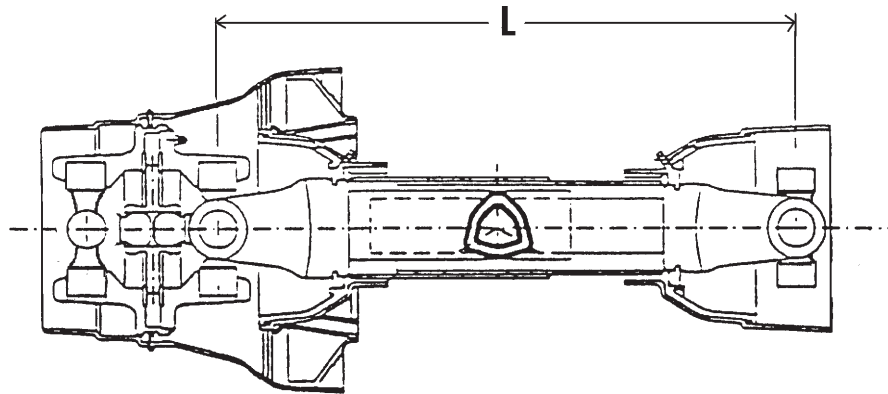
¹ Length of closed shaft from c/c of joints.



| SERIE | lg ¹ (cm) | OUTER | | | | | INNER | | | | | 7 | 8 |
|-------------------------------|-------------------------|---------------|--------|-------------|-------------|--------|-------------|--------|-------------|---------------|--------|-------------|-------------|
| | | 1 | | 2 | 3 | | 4 | | 5 | 6 | | | |
| | | part # | A (mm) | part # | part # | C (mm) | part # | D (mm) | part # | part # | B (mm) | | |
| 10 | 56 | 6605 | 40.0 | 6578 | 6580 | 61.6 | 6581 | 55.6 | 6579 | 6606 | 34.0 | 8109 | 8308 |
| 20 | 56 | 6218-E | 46.0 | 6578 | 6580 | 61.6 | 6581 | 55.6 | 6579 | 6219-E | 40.0 | 8109 | 8308 |
| | 121 | 6218-E | 46.0 | 6578 | 6582 | 61.6 | 6583 | 55.6 | 6579 | 6219-E | 40.0 | 8109 | 8308 |
| 40 | 71 | 6348-E | 54.0 | 6584 | 6586 | 66.5 | 6587 | 61.0 | 6585 | 6349-E | 47.0 | 8109 | 8308 |
| | 121 | 6348-E | 54.0 | 6584 | 6588 | 66.5 | 6589 | 61.0 | 6585 | 6349-E | 47.0 | 8109 | 8308 |
| 50 | 71 | 8083-E | 62.5 | 8302 | 8304 | 81.2 | 8305 | 75.0 | 8303 | 8084-E | 54.5 | 8109 | 8308 |
| | 121 | 8083-E | 62.5 | 8302 | 8306 | 81.2 | 8307 | 75.0 | 8303 | 8084-E | 54.5 | 8109 | 8308 |
| 60 and 80 old EG | 71 | 8246 | 69.0 | 8302 | 8304 | 81.2 | 8305 | 75.0 | 8303 | 8245 | 60.0 | 8109 | 8308 |
| | 121 | 8246 | 69.0 | 8302 | 8306 | 81.2 | 8307 | 75.0 | 8303 | 8245 | 60.0 | 8109 | 8308 |
| 80 and 90 | 71 | 9460 | 81.5 | 9491 | 9493 | 96.0 | 9494 | 89.8 | 9492 | 9459 | 69.5 | 8109 | 8308 |
| | 121 | 9460 | 81.5 | 9491 | 9495 | 96.0 | 9496 | 89.8 | 9492 | 9459 | 69.5 | 8109 | 8308 |
| | 171 | 9460 | 81.5 | 9491 | 9497 | 96.0 | 9498 | 89.8 | 9492 | 9459 | 69.5 | 8109 | 8308 |

¹ Length of closed shaft from c/c of joints.

CENTRAL PART

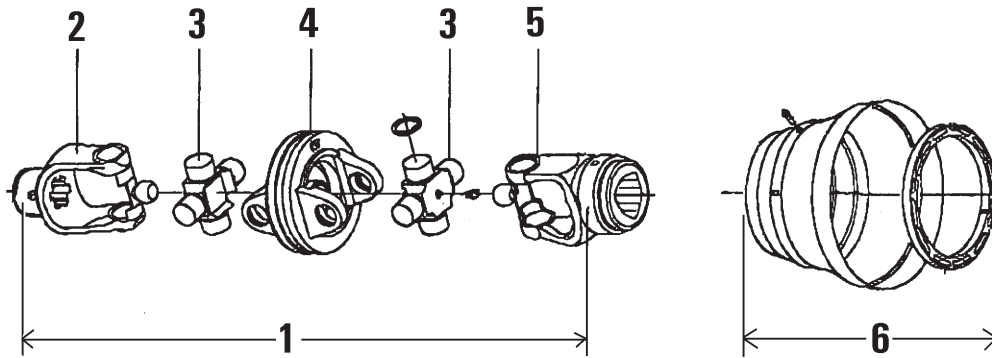


| SERIE | HP | | L | | | |
|-------|---------|----------|---------------|---------------|---------------|---------------|
| | 540 RPM | 1000 RPM | 71 cm | 91 cm | 111 cm | 121 cm |
| 20 | 21 | 31 | ... | T20-091P-CV80 | T20-111P-CV80 | ... |
| 40 | 35 | 55 | ... | T40-091P-CV80 | ... | T40-121P-CV80 |
| 60 | 64 | 100 | ... | T60-091P-CV80 | ... | T60-121P-CV80 |
| 80 | 95 | 150 | T80-071P-CV80 | T80-091P-CV80 | ... | T80-121P-CV80 |

N.B. To complete the power take off, you must choose a standard yoke and a «CV80» joint yoke, and add to the price of the central part.

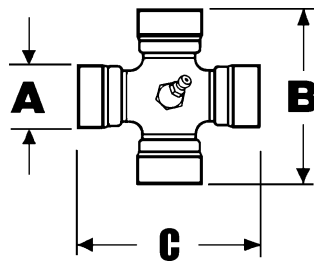


«CV80» JOINT



| SERIE | | 1 Complete CV80 | 2 Yoke CV80 | 3 U-joints | 4 CV80 only | 5 Yoke for outer tube | 6 Shield cone |
|-----------|----------------|-----------------------|-------------------|---------------|----------------|-----------------------------|---------------------|
| 20 | 1 3/8" - 6 QD | T20-CV-1386QD | 6409-CVQD | 6208-CV | 6591 | 6430-CV | 6578-CV |
| | 1 3/8" - 21 QD | T20-CV-13821QD | 6409-1-CVQD | 6208-CV | 6591 | 6430-CV | 6578-CV |
| 40 | 1 3/8" - 6 QD | T40-CV-1386QD | 6354-CVQD | 6239-CV | 6592 | 6430-CV | 8302-CV |
| | 1 3/8" - 21 QD | T40-CV-13821QD | 6354-1-CVQD | 6239-CV | 6592 | 6430-CV | 8302-CV |
| 60 | 1 3/8" - 6 QD | T60-CV-1386QD | 8250-CVQD | 8238-CV | 8342 | 8240-CV | 8302-CV |
| | 1 3/8" - 21 QD | T60-CV-13821QD | 8250-1-CVQD | 8238-CV | 8342 | 8240-CV | 8302-CV |
| | 1 3/4" - 20 QD | T60-CV-13420QD | 8250-3-CVQD | 8238-CV | 8342 | 8240-CV | 8302-CV |
| 80 | 1 3/8" - 6 QD | T80-CV-1386QD | 9455-CVQD | 9208-CV | 9499 | 9209-CV | 9491-CV |
| | 1 3/8" - 21 QD | T80-CV-13821QD | 9463-CVQD | 9208-CV | 9499 | 9209-CV | 9491-CV |
| | 1 3/4" - 20 QD | T80-CV-13420QD | 9224-CVQD | 9208-CV | 9499 | 9209-CV | 9491-CV |

«CV80» U-JOINTS

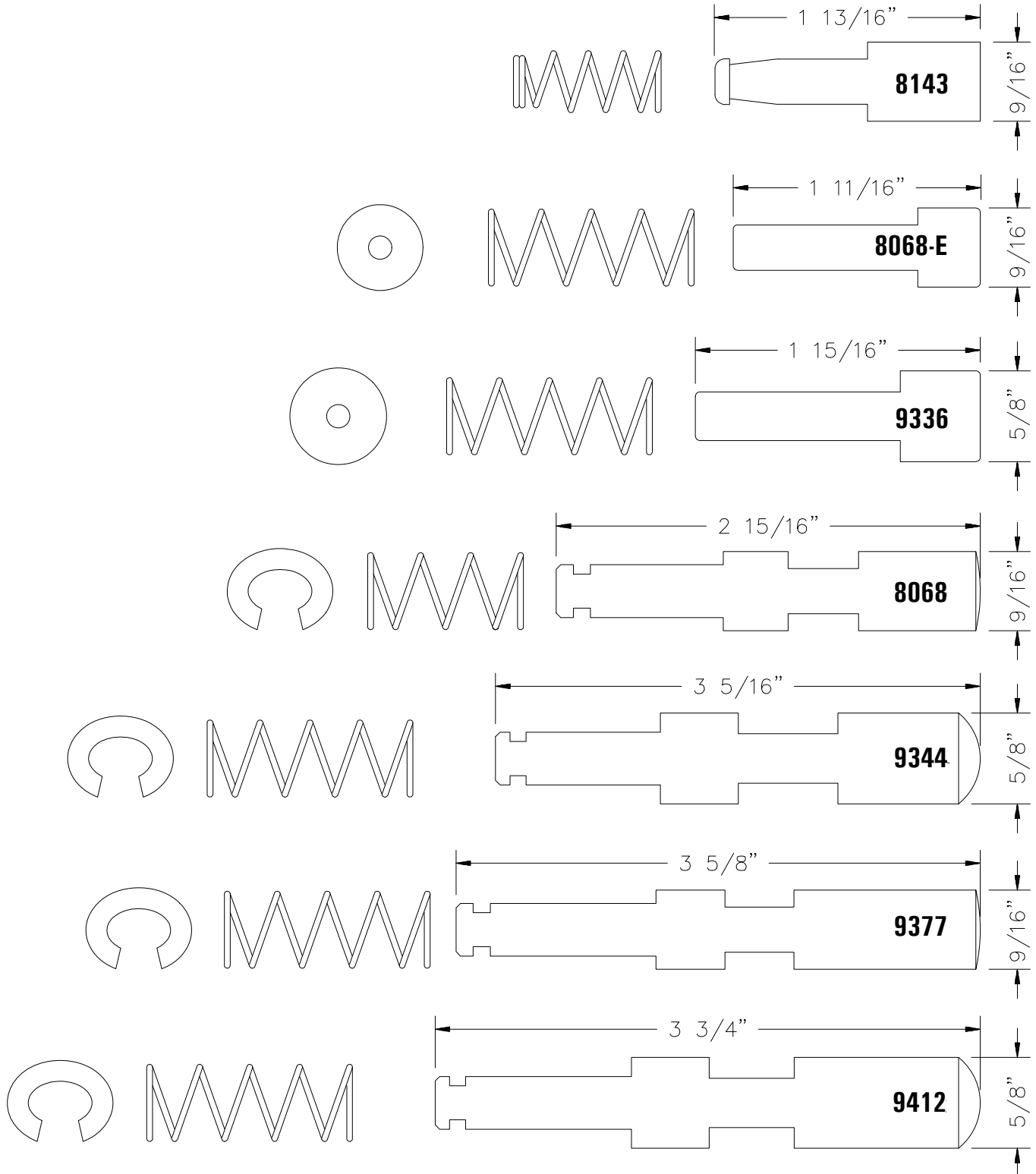


| SERIE | A (mm) | B (mm) | C (mm) | PART # |
|-------------|--------|--------|--------|----------------|
| 20CV | 23.8 | 74.1 | 82.1 | 6208-CV |
| 40CV | 27.0 | 85.8 | 91.2 | 6239-CV |
| 60CV | 30.2 | 95.4 | 101.4 | 8238-CV |
| 80CV | 34.9 | 106.3 | 113.8 | 9208-CV |



PUSH PIN

Various push pin sets shown full size.



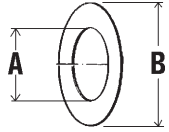


BOLTS CHART

| Part no. | Length (mm) | Diameter (mm) | Grade |
|----------|-------------|-----------------------|-------|
| 6207 | 40 | 6 | 8.8 |
| 6238 | 50 | 8 | 8.8 |
| 8072 | 55 | 10 | 8.8 |
| 8218 | 60 | 10 | 8.8 |
| 8222 | 70 | 12 | 8.8 |
| 9207 | 60 | 12 | 10.9 |
| 9207-1 | 65 | 12 | 8.8 |
| 9207-375 | 65 | 12 (machined to 3/8") | 8.8 |
| 9461 | 90 | 12 | 8.8 |
| 9515 | 70 | 14 | 8.8 |
| 9662 | 80 | 16 | 8.8 |



FRICTION PLATE CHART

|  | Part no. | A (mm) | B (mm) |
|---|----------|--------|--------|
| | 8318 | 68 | 120 |
| | 8313 | 77.5 | 142 |
| | 8328 | 90 | 152 |

**You are looking for «American»
or «Walterscheid» series parts?**

Look at our



driveline components catalog

Ce manuel est aussi disponible en français.
Veuillez téléphoner.



INNOVATION - EXCELLENCE

LES MACHINERIES PRONOVOST INC.
260 Route 159,
Saint-Tite, Quebec, Canada, G0X 3H0
Tel.: (418) 365-7551, Fax: (888) 652-9270