

TENCO®

OPERATOR'S / PARTS MANUAL



TENCO SNOWBLOWER Models P-542HYD & P-602HYD

Copyright © Les Machineries Tenco Machinery (CDN) ltée/ltd, 2008

All rights reserved.

Printed in Canada.

TABLE OF CONTENTS

Section	Item	Page
1	Introduction	5
2	Safety	6
	General Safety	6
	Safety in operation	6
	Safety with Maintenance	7
	Safety in transport	7
	Safety in storage	7
3	Decals	8
	Safety Decals	8
	Maintenance Decals	8
4	Maintenance	9
5	Storage	10
6	Specifications	11
7	Parts List	12
	Snowblower P-542HYD P-602HYD	12
	Chute PSIG-602	16
	Chute PCG-602	17
	Hydraulic circuit: Motor	18
	Gear Box 8251	19
	Cylinder 25TR04	20
	Hydraulic motor MLH-250	21
	Hydraulic motor MLHT160	22
8	Torque chart	23
9	Warranty	24

INTRODUCTION

Your Snowblower was carefully designed and we are confident it will meet your requirements in terms of quality, performance and reliability.

This manual was prepared to assist you in the safe operation of your new Snowblower. It contains important information which will help you achieve excellent returns with your Snowblower.

Please read this manual completely before operating your Snowblower and keep it for future reference.

Before starting the machine, you or any other person who will be operating the Snowblower must familiarize yourself with the safety recommendations and the operating instructions. Please read carefully and be sure to understand and follow all recommendations and procedures.

In this manual, the right and left sides are identified as shown on Figure 1.

If you require additional information on your Snowblower, please contact your TENCO Dealer.

NOW take a moment to enter the model, serial number and the date of purchase of your Snowblower in the space provided.

When ordering parts from your Dealer, please refer to these numbers for a fast and efficient service. Use TENCO parts for replacement.

The model and serial numbers are on the name plate shown on Fig. 1.

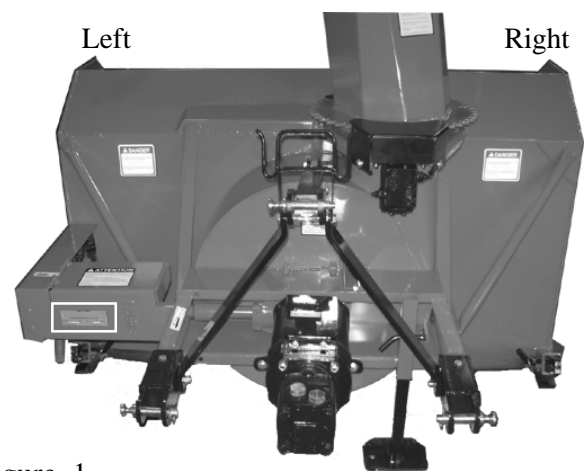



Figure 1

MODEL: _____ 

SERIAL NO.: _____ 

DATE OF PURCHASE: _____ 

SAFETY

GENERAL SAFETY

WHEN YOU SEE THIS SYMBOL



ATTENTION!

**BE ALERT
YOUR SAFETY IS INVOLVED**

This symbol «**SAFETY ALERT**» is used in this manual and on the safety decals on the Snowblower. It warns you of the possibility of danger. Carefully read, understand and follow all safety recommendations before operating the Snowblower.

- 1) Careful operation is the best assurance against accidents. Carefully read this manual and follow all recommendations before operating your Snowblower. It is the owner's responsibility to make sure that anyone who will operate the Snowblower will read this manual before operating the equipment.
- 2) Familiarize yourself with all controls and always be ready to stop the Snowblower quickly in case of emergency.
- 3) Never let a child operate the Snowblower.
- 4) Do not modify the Snowblower. Any non authorized modification may affect the efficiency and/or safety of the equipment.
- 5) Never operate the Snowblower with defective parts or if damaged in any way. Have it repaired before operating.
- 6) Make sure all fasteners are in place and properly secured or tightened. Refer to torque chart on page 23.
- 7) Avoid wearing loose fitting clothing when working with the Snowblower. These could get entangled in moving parts of the equipment and cause accidents.

- 8) Prolonged exposure to noise may hamper hearing. Protect yourself by wearing adequate protection devices.
- 9) Hydraulic fluids under pressure can damage your skin. Do not use your hands to locate a leak.
- 10) Before the beginning of the snow season, inspect all areas where the Snowblower will be used and remove any object which may cause an accident and/or damage the equipment.
- 11) Never operate your Snowblower in poor visibility or without proper lighting conditions.

SAFETY IN OPERATION

- 1) Never raise the snowblower more than 5' to avoid tilting tractor forward.
- 2) Be sure there are no obstructions around the equipment and that no one stands near the equipment when in operation.
- 3) Do not operate an engine in a confined or non ventilated area.
- 4) Do not perform any adjustments, cleaning, maintenance or repairs with the engine running. The engine must be stopped and the P.T.O. disengaged. Preferably remove the key from the ignition.
- 5) Wear adequate clothing when working in cold or windy conditions.
- 6) Before starting-up the Snowblower, make sure the auger and drum areas are free of ice.
- 7) Place control handle in neutral position before starting engine.
- 8) Keep hands, feet and clothing away from moving parts of the Snowblower. Stay away from the discharge chute.
- 9) Before unplugging the chute, always disengage the P.T.O., stop the engine and relieve all hydraulic pressures.

SAFETY (cont'd)

- 10) Do not operate in excessive inclined conditions. Be careful when turning in slopes.
- 11) Never operate your Snowblower with missing guards or without protective devices in place.
- 12) Do not operate your Snowblower near buildings, windows or other vehicles without prior and proper adjustment of the chute deflector.
- 13) Never aim discharge chute towards people or animals. This may cause serious injuries.
- 14) Always reduce operating speed in slippery conditions.
- 15) Be careful when backing-up, make sure you have good visibility.
- 16) Always be on the lookout for objects which may enter the Snowblower.
- 17) If undue vibrations are felt, disengage the oil motor., stop the motor and look for the cause of the vibration. Vibration is usually the indication of a problem.
- 18) At the end of the operation, disengage the oil motor, lower the Snowblower, put transmission in neutral, apply parking brake, stop engine and remove the key from the ignition.

SAFETY WITH MAINTENANCE

- 1) Perform the Snowblower maintenance according to recommendations contained in this manual.
- 2) Stop engine and relieve all hydraulic pressures before doing inspection, maintenance or repairs.
- 3) Never perform any work under the Snowblower while it is supported only by the tractor's hydraulic system. It must be completely supported by wooden blocks or other safe means.

SAFETY IN TRANSPORT

- 1) On public roads, use proper safety lights and check local regulations.
- 2) Be alert while driving on the road. Never carry passengers.
- 3) Always disengage the oil motor while moving from one area of work to another.
- 4) Never exceed the speed that permits full steering and braking control at all times.
- 5) Be careful while backing up, make sure you have good visibility.

SAFETY IN STORAGE

- 1) Provide adequate supports to prevent any accidental overturning of the Snowblower.
- 2) Do not let children play in the area where the Snowblower is stored.

DECALS

SAFETY DECALS

The safety decals are affixed wherever special safety precautions are indicated. Locate them on the machine and read them carefully. If a decal is damaged, lost or illegible, install a new one. Each decal is shown and identified with a part number.

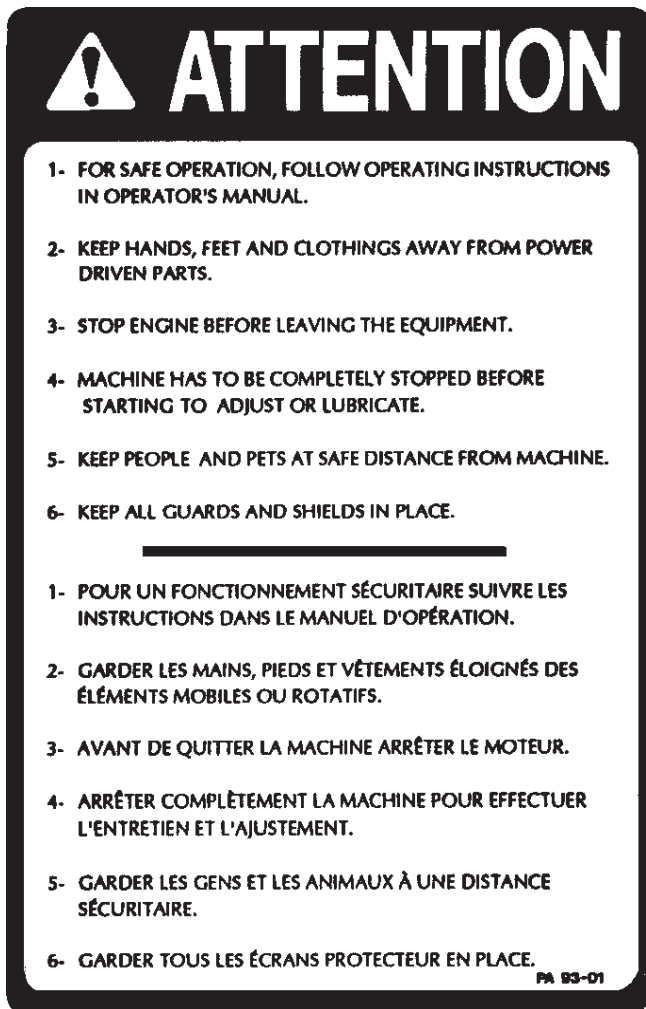


Figure 2
Part no.: A102

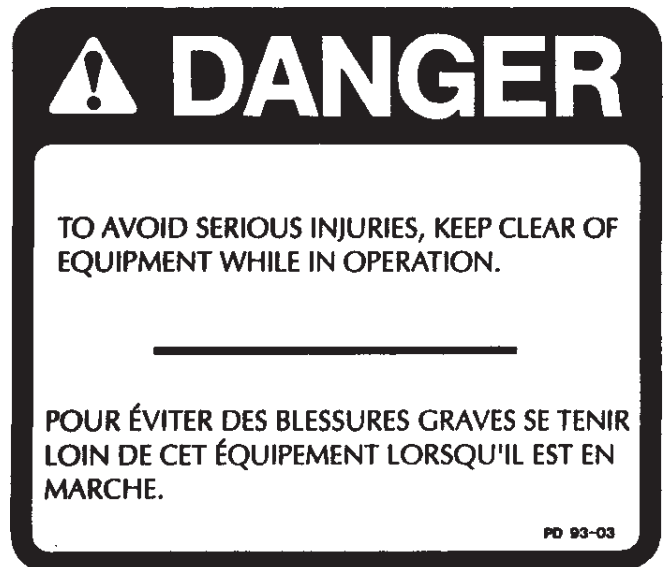


Figure 3
Part no.: A101

MAINTENANCE DECALS

The maintenance decals indicate the points requiring lubrication. Refer to maintenance section for more details.



Figure 4
Part no.: A104



Figure 5
Part no.: A 106

MAINTENANCE

- 1) Wipe off all grease fittings with a clean cloth before adding grease in order to avoid injecting dirt and sand.
- 2) Repair or replace damaged grease fittings.
- 3) Lubricate all grease fittings every 10 hours of operation.
- 4) Oil drive chain every 8 hours of operation.
- 5) Check oil level in gear box once a month. If necessary add oil.
- 6) Check tension of drive chain every 25 hours of operation and adjust if necessary.
- 7) Check for tightness of bearing collars every 50 hours of operation.
- 8) Change gearbox oil once a year. Use gear box oil S.A.E. W90 rated API, class GL-5.
- 9) Check all nuts and bolts once a year. If necessary use torque chart on page 23.

STORAGE

- 1) Store the Snowblower in a cool, dry place.
- 2) Support the Snowblower with wooden blocks.
- 3) Keep all piston rods in the retracted position. This will assure better protection against the elements.
- 4) Clean your Snowblower.
- 5) Thoroughly inspect all parts of the Snowblower. Replace or repair worn or defective parts.
- 6) Touch-up or repaint if necessary.
- 7) Lubricate all points before storage.

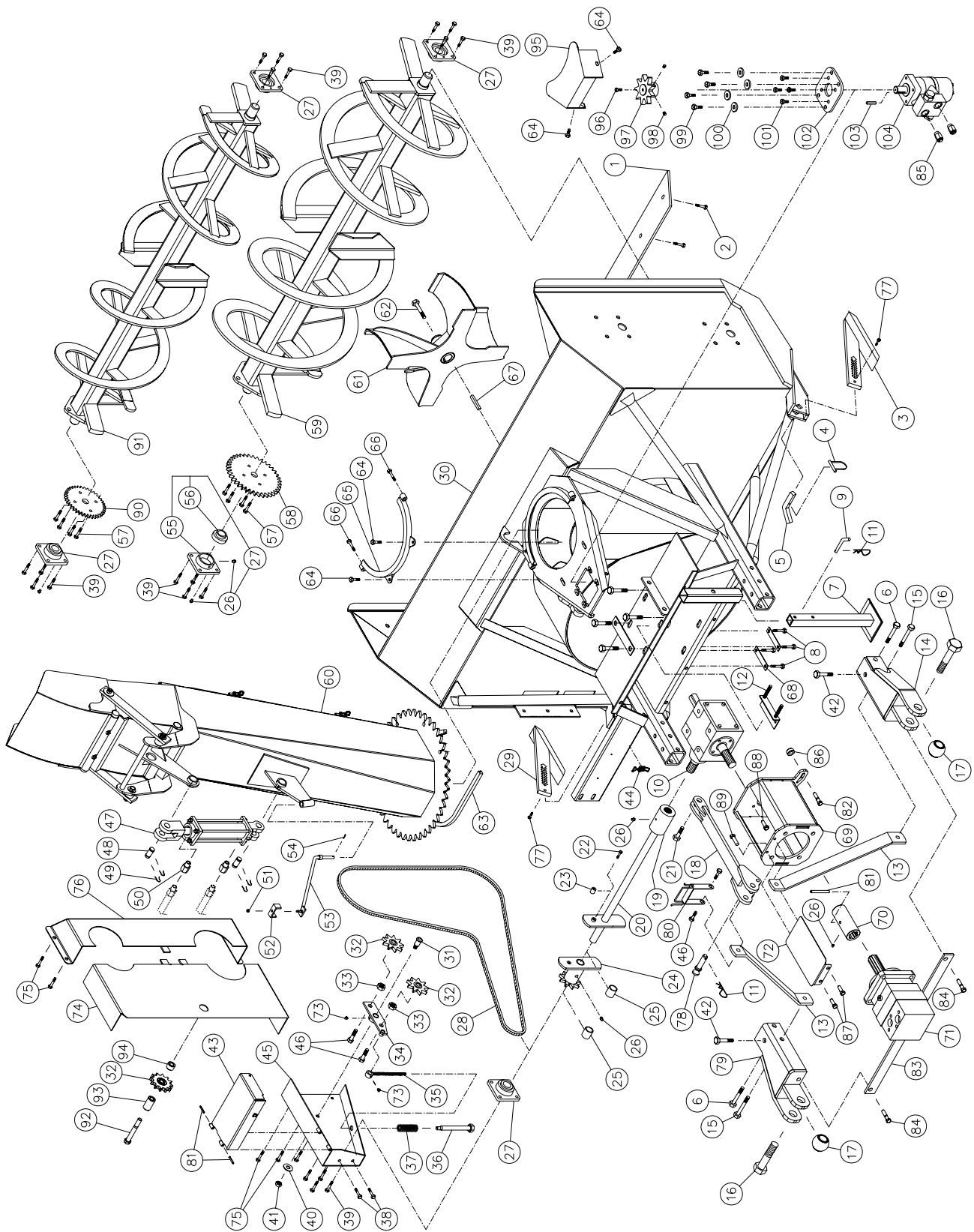
SNOWBLOWER SPECIFICATIONS

MODEL	P-542HYD	P-602HYD
Horse power recommended	28 to 35 GPM at 2500 psi (approx. 28 to 39 HP)	
Drive motor	MLHT160	
Working width	55 1/2"	61 1/2"
Cutting height	37"	
Impeller diameter	26"	
Depth of drum	10 1/2"	
Impeller blades	4	
Size of impeller shaft	1 1/2"	
Impeller RPM	540	
Main auger diameter	18 1/2"	
Upper auger diameter	14 1/2"	
Drive chain	60	
Hitch category	2	
Chute rotation on UHMW	Standard	
Adjustable skid shoes	Standard	
Motor for hyd. chute rotation	MLH-250	
Cylinder for deflector hyd. control	25TR04	
App. weight	1 100 lbs	1 200 lbs

Design and specifications subject to change without notice.

SNOWBLOWERS P-542HYD P-602HYD

170-04931



SNOWBLOWERS P-542HYD P-602HYD (cont'd)

REF.	PART #	DESCRIPTION	QTY	
			542	602
1	140-24161	Not reversible scraper blade 3/8" x 2 1/2" x 50 1/4" lg	1	-
1	140-23171	Not reversible scraper blade 3/8" x 2 1/2" x 56 1/4" lg	-	1
2	319-38310	Plow bolt 7/16" NC x 1 1/2" lg + nut & lockwasher	5	5
3	110-05541	Skid shoe (right side)	1	1
4	8112	Lock pin 1/4"	2	2
5	140-03261	Skid shoes lock	2	2
6	300-40460	Bolt 1/2" NC x 4" lg + nylon locknut	2	2
7	6520	Storage support	1	1
8	300-40280	Bolt 1/2" NC x 1 1/4" lg + lock washer	8	8
9	6521	Storage support pin	1	1
10	8251	Gear box T27D	1	1
11	Std.	Hitch pin clip 5/32"	2	2
12	8199	Adjustment plate for gear box + 4 nuts 1/2" NC	1	1
13	140-17432	3-point side bar	2	2
14	110-39951	Right lower hitch	1	1
15	300-40490	Bolt 1/2" NC x 4 1/2" lg + nylon locknut	2	2
16	300-52520	Bolt 1 1/8" NC x 5" lg + nylon locknut	2	2
17	150-13081	Ball joint	2	2
18	110-28862	Upper hitch	1	1
19	6466	Splined adaptor 1 1/4"-19 splines (welded)	1	1
20	110-41401	Auger drive shaft 17 9/16" lg overall (including no. 19 and 23)	1	-
20	110-39541	Auger drive shaft 20 9/16" lg overall (including no. 19 and 23)	-	1
21	300-46370	Bolt 3/4" NC x 2 1/2" lg + nylon locknut	1	1
22	300-32340	Bolt 1/4" NC x 2" lg grade 5 + nylon locknut	1	1
23	150-01491	Bushing 1/4" i.d. x 7/8" o.d. x 3/4" lg (welded)	2	2
24	6260	Sprocket #60 + shearplate (including # 25)	1	1
25	8009	Brass bushing 1 1/4" i.d. x 1 1/2" o.d. x 1 3/16" lg	2	2
26	Std.	Grease fitting 1/4"-28 straight	13	13
27	UCFD207-20	Bearing 1 1/4" + flange + 2 straight grease fitting	5	5
28	190-11331	Chain #60 x 95 1/4" lg (127 links)	1	1
28	26A60	Connecting link # 60	1	1
28	59-60	Offset link # 60	1	1
29	110-04361	Skid shoe (left side)	1	1
30	120-07241	Frame P-542 HYD.	1	-
30	120-06891	Frame P-602 HYD.	-	1
31	150-00332	Idler clevis pin	1	1
32	8186	Idler sprocket #60	3	3
33	336-44000	Nut 5/8" NC	2	2
34	110-16361	Idler	1	1
35	110-16321	Threaded rod for idler adjustment + nut 7/16" NC	1	1
36	110-01981	Threaded tube for idler adjustment	1	1
37	6538	Compression spring	1	1
38	300-36250	Bolt 3/8" NC x 1" lg + nylon locknut	2	2
39	300-40310	Bolt 1/2" NC x 1 1/2" lg + flat washer 7/16 + nylon locknut	20	20
40	376-44000	Flat washer 5/8"	1	1
41	346-45000	Nylon locknut 5/8" NC thin	1	1
42	300-40430	Bolt 1/2" NC x 3 1/2" lg. + nylon locknut	2	2
43	110-41421	Side shaft guard for P-542 HYD	1	-
43	110-39521	Side shaft guard for P-602 HYD	-	1

SNOWBLOWERS P-542HYD P-602HYD (cont'd)

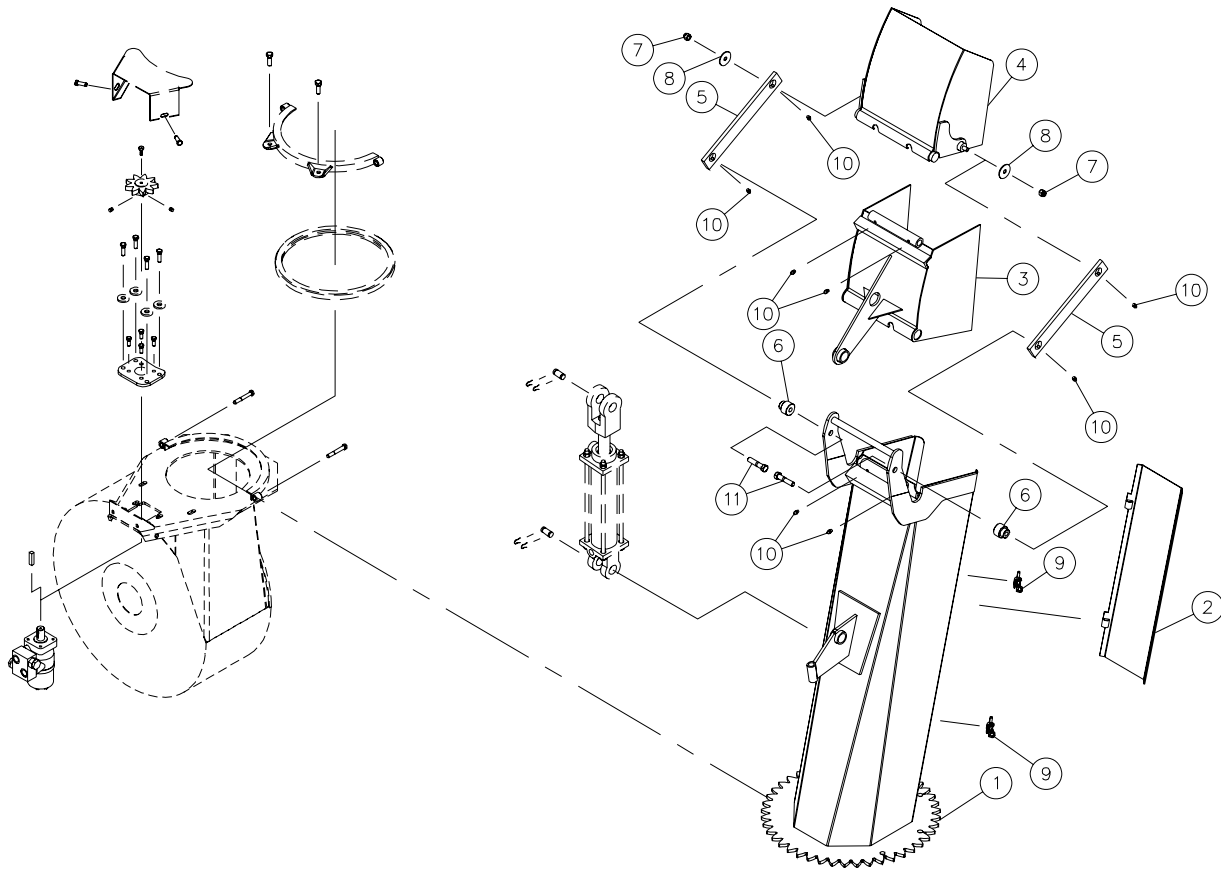
REF.	PART #	DESCRIPTION	QTY	
			542	602
44	8374	Adjustable clamp fastener (welded)	1	1
45	110-18942	Chain guard	1	1
46	300-40340	Bolt ½" NC x 2" lg + nylon locknut	2	2
47	25TR04	Cylinder	1	1
48	6004	Pin 1" x 3 1/8"	2	2
49	Std.	Hairpin cotter 7/8"	4	4
50	RS-1/16x08NPT	Kit of two unidirectionals restrictors	1	1
51	Std.	Nylon locknut 5/16" NC	1	1
52	140-00881	Hoses mounting plate	1	1
53	110-01121	Mounting support plate	1	1
54	Std.	Cotter pin 1/8" x 1" lg	1	1
55	FD207	Flange for 2 grease fitting	5	5
56	UC207-20	Bearing 1 1/4"	5	5
57	300-38310	Bolt 7/16" NC x 1 1/2" lg + two-way locknut	8	8
58	8021	Sprocket 60 A 38 T 1 ¼" ø	1	1
59	110-41441	Auger P-542HYD	1	-
59	110-39551	Auger P-602HYD	-	1
60	120-06921	Standard chute	1	1
61	110-28831	Impeller 26" ø 4 blades	1	1
62	300-44310	Bolt 5/8" NC x 1 ½" lg (ass. with lock-tite loctite 242) + lockwasher	1	1
63	6471	U-shaped UHMW approx. 12" ø interior diameter	1	1
64	300-38280	Bolt 7/16" NC x 1 ¼" lg + nylon locknut & flat washer	4	4
65	110-02001	Retaining bracket	1	1
66	300-34370	Bolt 5/16" NC x 2 ½" lg + nylon locknut	2	2
67	8030	Key 3/8" x 3/8" x 3 ½" lg	1	1
68	140-10571	Back plate	3	3
69	110-39691	Hydraulic motor support	1	1
70	190-05311	Hydraulic motor adaptor	1	1
71	MLHT-160	Hydraulic motor	1	1
72	130-70471	Guard	1	1
73	Std.	Grease fitting 1/4"-28 90 deg.	2	2
74	110-39641	Interior guard (welded)	1	1
75	300-36250	Bolt 3/8" NC x 1" lg + nylon locknut and flat washer	7	7
76	130-39651	Interior guard (bolted)	1	1
77	300-32280	Bolt 1/4" NC x 1 1/4" lg + nylon locknut	2	2
78	150-06012	Pin for top link	1	1
79	110-39952	Left lower hitch	1	1
80	110-33781	Hoses support	1	1
81	Std.	Roll pin 5/16" x 2" lg	3	3
82	300-36325	Bolt 3/8" NC x 1 3/4" lg + flat washer & nylon locknut	2	2
83	130-71201	3-point hitch reinforcement	1	1
84	300-40325	Bolt 1/2" NC x 1 3/4" lg + nylon locknut	2	2
85	RS-1/16x08orb	Kit of two unidirectionals restrictors	1	1
86	150-12851	Spacer	2	2
87	300-36220	Bolt 3/8" x 3/4" lg + spring washer	2	2
88	308-32020	Bolt M8-1.25 x 20 mm lg (ass. with loctite 242)	4	4
89	300-40325	Bolt 1/2" NC x 1 3/4" lg + nylon locknut	4	4
90	8144	Sprockets 60 A 30 T 1 ¼" ø	1	1
91	110-41451	Upper auger P-542 HYD.	1	-

SNOWBLOWERS P-542HYD P-602HYD (cont'd)

REF.	PART #	DESCRIPTION	QTY	
			542	602
91	110-39561	Upper auger P-602 HYD.	-	1
92	300-40460	Bolt 1/2" NC x 4" lg + nylon locknut	1	1
93	150-12821	Long spacer	1	1
94	150-12811	Short spacer	1	1
95	130-08561	Guard	1	1
96	300-32220	Bolt 1/4" NC x 3/4" lg + lock washer	1	1
97	110-04183	Sprocket 9 teeth	1	1
98	323-36160	Hexagonal socket set screw 3/8" NC x 3/8" lg	2	2
99	300-38320	Bolt 7/16" NC x 1 1/4" lg + nylon locknut	4	4
100	150-12741	Flat washer	4	4
101	300-36250	Bolt 3/8" NC x 1" lg + lock washer	4	4
102	130-07911	"Orbit" motor support	1	1
103	8369	Key for "orbit" motor	1	1
104	MLH-250	Hydraulic motor	1	1

INDUSTRIAL CHUTE PSIG-602

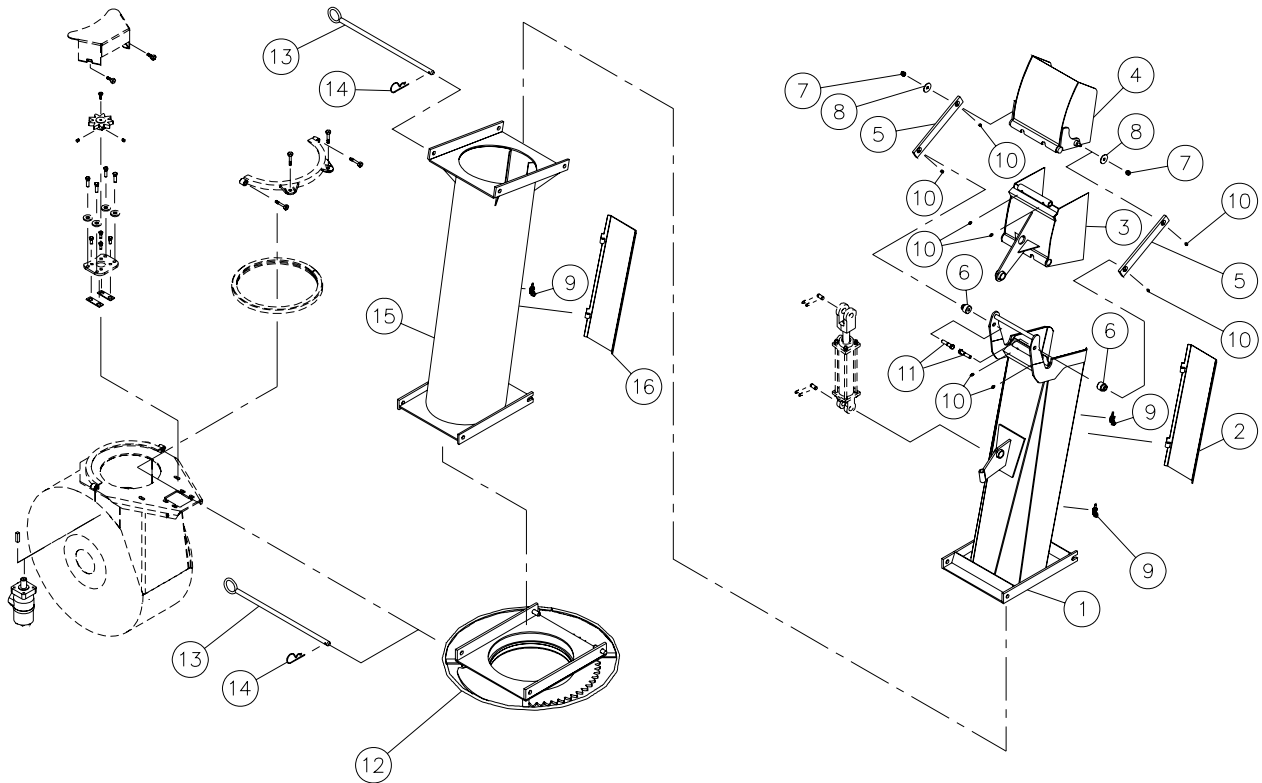
170-05161



REF.	PART #	DESCRIPTION	QTY
1	110-39671	Chute base	1
2	110-39681	Access panel.....	1
3	110-22871	Lower chute deflector	1
4	110-22861	Upper chute deflector	1
5	140-14171	Connecting rod	2
6	150-05391	Spacer for connecting rod	2
7	346-36000	Nylon locknut 3/8"	2
8	378-36500	Flat washer for connection rod	2
9	8376	Adjustable clamp fastener (welded)	2
10	Std.	Grease fitting 1/4"-28 straight	8
11	300-38340	Bolt 7/16" NC x 2" lg + nylon locknut and flatwasher (2).....	2

INDUSTRIAL CHUTE PCG-602

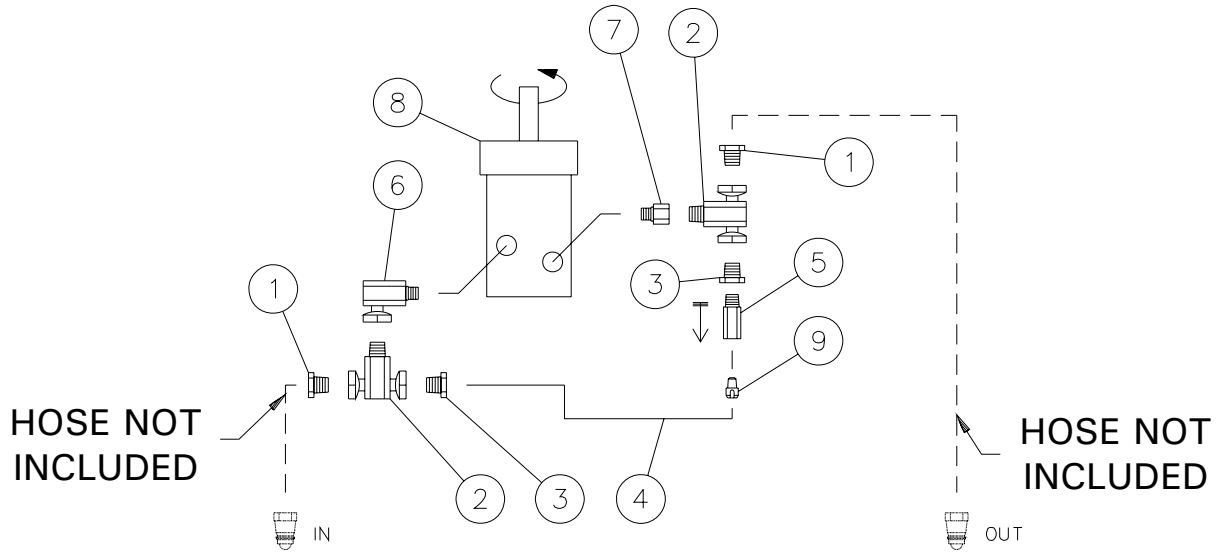
170-05201



REF.	PART #	DESCRIPTION	QTY
1	110-41461	Chute base	1
2	110-39681	Access panel.....	1
3	110-22871	Lower chute deflector	1
4	110-22861	Upper chute deflector	1
5	140-14171	Connecting rod	2
6	150-05391	Spacer for connecting rod	2
7	346-36000	Nylon locknut 3/8"	2
8	378-36500	Flat washer	2
9	8376	Adjustable clamp fastener (welded)(optional:2 x PR-5472, 1 x PR-5472-2)	2
10	Std.	Grease fitting 1/4"-28 straight	8
11	300-38340	Bolt 7/16" NC x 2" lg + nylon locknut & flat washer (2)	2
12	110-41471	Chute adaptor with quick attach	1
13	110-41481	Pin for quick attach (adaptor & extension)	2
14	Std.	Hitch pin clip	2
15	PR-5472	Extension 48"	Opt.
15	PR-5472-2	Extension 24"	Opt.
16	110-41501	Access panel for extension PR-5472-2	Opt.
16	110-41521	Access panel for extension PR-5472	Opt.

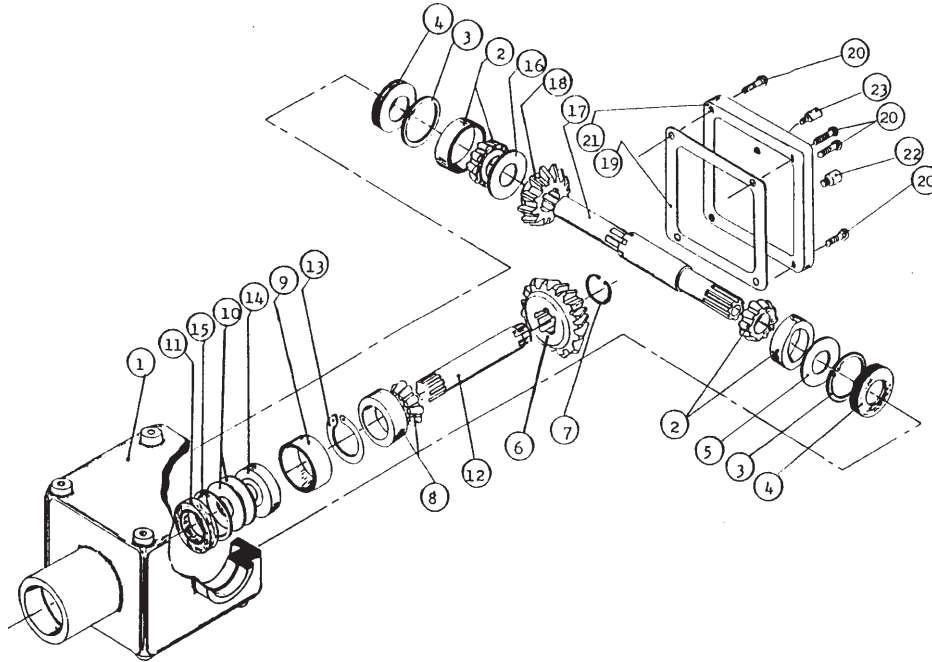
HYDRAULIC CIRCUIT

170-03031R2



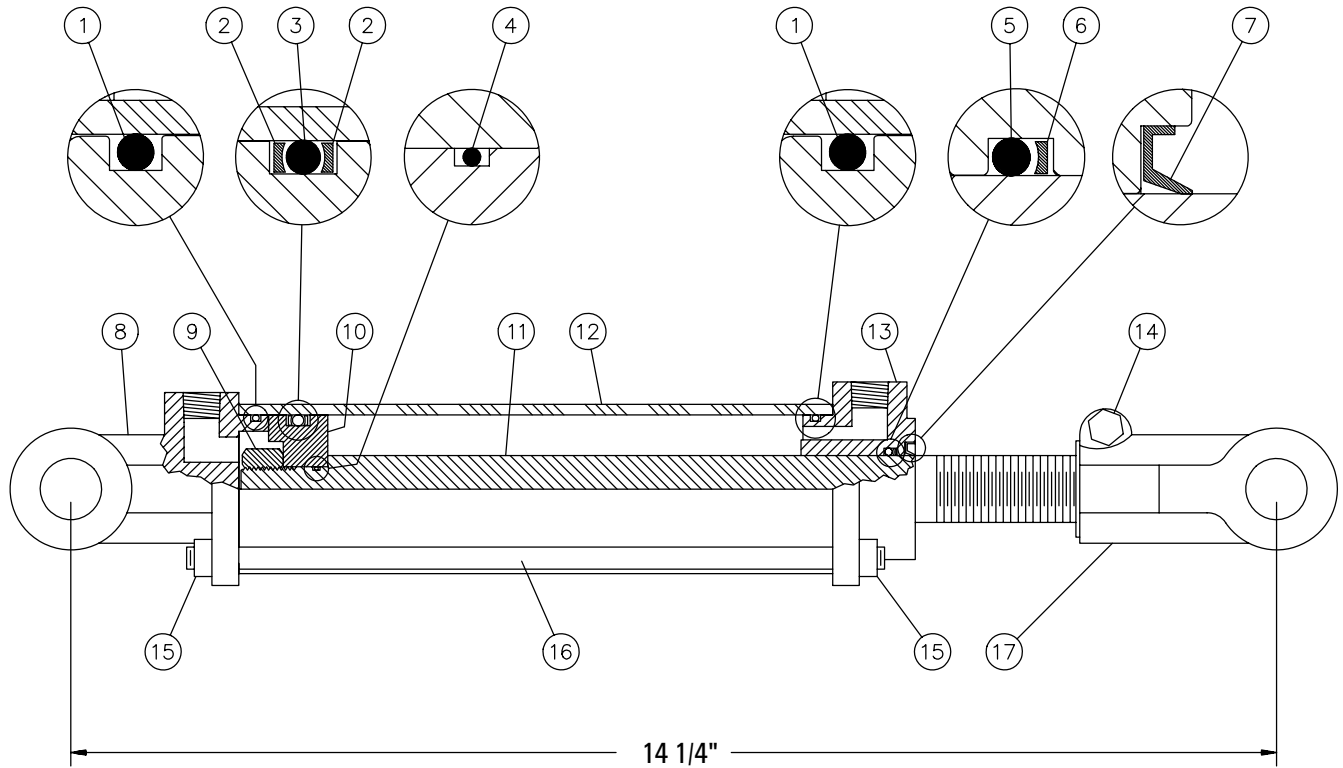
REF.	PART #	DESCRIPTION	QTY
			MLHS-160
1	3159-12	Plug	1
2	9457-12-12	«T» fitting	2
3	3109-12-08	Fitting (reducer)	2
4	190-05241	Hose 3/8" R1 x 20" lg + 2 fittings 6U108	1
5	3209-08-08	Fitting	1
6	9405-08-08	Fitting 90 deg.	1
7	3269-10-12	Straight fitting	1
8	MLHT-160	Hydraulic motor MLHT-160	1
9	03-0274A	Check valve	1

GEAR BOX # 8251 (T27D)



REF.	PART #	DESCRIPTION	QTY
1	8043	Casing	1
2	30208-A	Roller bearing	2
3	8045	Inside circlip 80mm	2
4	8046	Oil seal 40 x 80 x 12mm	2
5	8047	Adjusting washer	1
6	8048	Gear Z18	1
7	8049	Outside circlip 40mm	1
8	30207-A	Roller bearing	1
9	8051	Spacer ring	1
10	8052	Adjusting washer	2
11	8053	Oil seal 35 x 72 x 12mm	1
12	8054	Side shaft (1 1/4" - 19 splines)	1
13	8055	Inside circlip 72mm	1
14	6207-2RS	Ball bearing	1
15	8057	Outside circlip 35mm	1
16	8058	Adjusting washer	1
17	8252	Impeller shaft (1.575" & 1 3/8" - 6 splines)	1
18	8060	Gear Z-18	1
19	- - -	Use silicone caulking	-
20	8062	Bolt M10 x 14mm	4
21	8063	Cover	1
22	8064	Oil level plug	1
23	8065	Vent plug	1

CYLINDER 25TR04

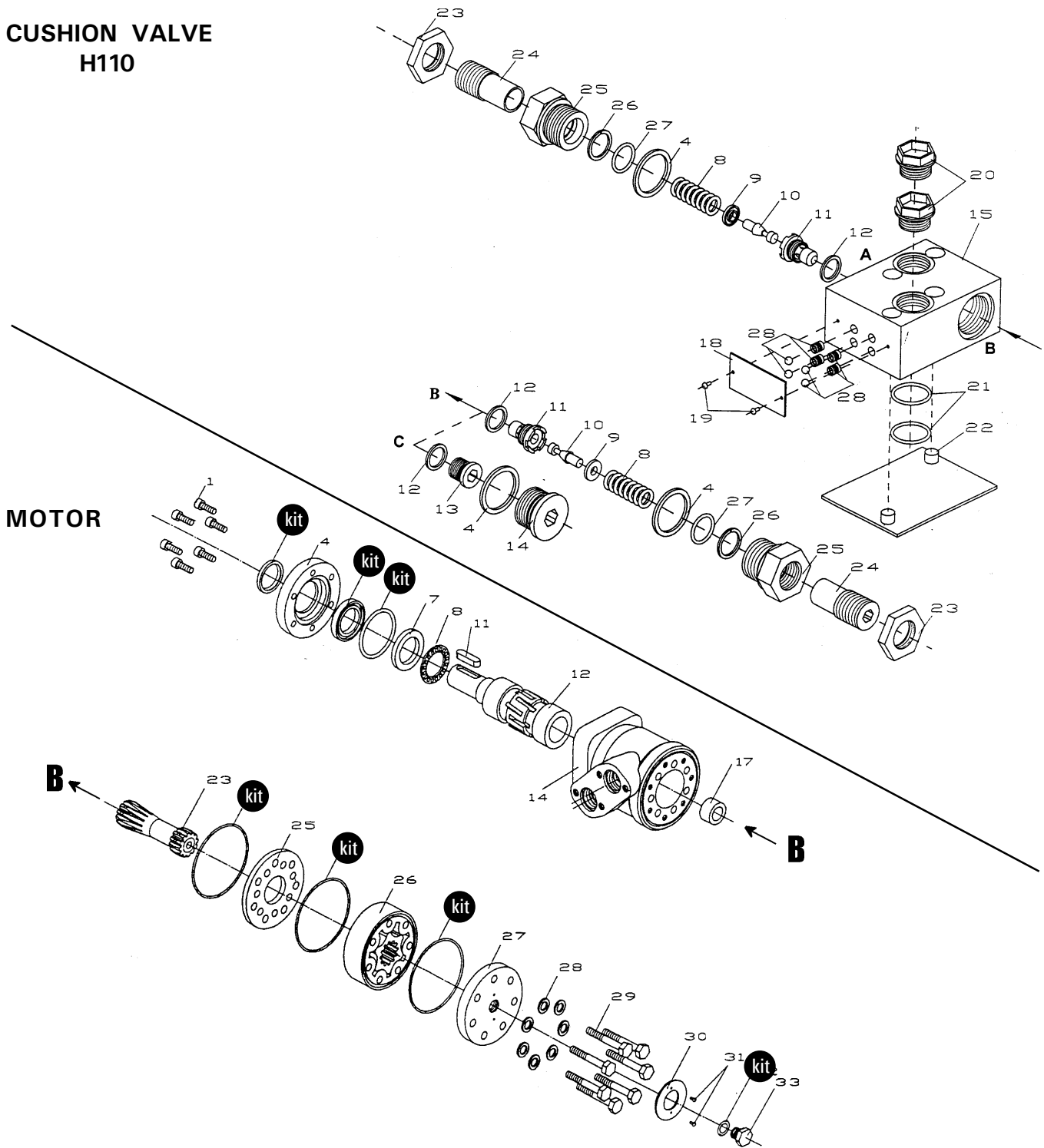


REF.	PART #	DESCRIPTION	QTY
1	See #RK25TR	O-ring 1/8" x 2 1/4" x 2 1/2"	2
2	See #RK25TR	Back-up 2 1/2" o.d. x 3/16 ø	2
3	See #RK25TR	O-ring 3/16" x 2 1/8" x 2 1/2"	1
4	See #RK25TR	O-ring 1/16" x 5/8" x 3/4"	1
5	See #RK25TR	O-ring 1/8" x 1 1/8" x 1 3/8"	1
6	See #RK25TR	Back-up 1 3/8" o.d. x 1/8" ø	1
7	See #RK25TR	Wiper 1 1/8" i.d. x 1 5/8" o.d.	1
8	492401	Yoke (for 2 1/2" tube)	1
9	338-46000	Nut 3/4" NF	1
10	4924-31	Piston 2 1/2" ø	1
11	491980-04	Piston rod 1 1/8"	1
12	491668-04	Cylinder body 2 1/2" ø	1
13	492421	Head (for 2 1/2" tube)	1
14	300-36355	Bolt 3/8" NC x 2 1/4" + nut	1
15	336-36000	Nut 3/8" NC	8
16	Std.	Threaded rod 3/8" NC x 8" lg	4
17	458599	Yoke (for 1 1/8" rod)	1
NI*	8183	Pin 1" ø + cotter pin	2
NI*	RK25TR	Repair kit for 2 1/2" cylinder (includes # 1, 2, 3, 4, 5, 6, & 7)	1

*NI = NOT ILLUSTRATED

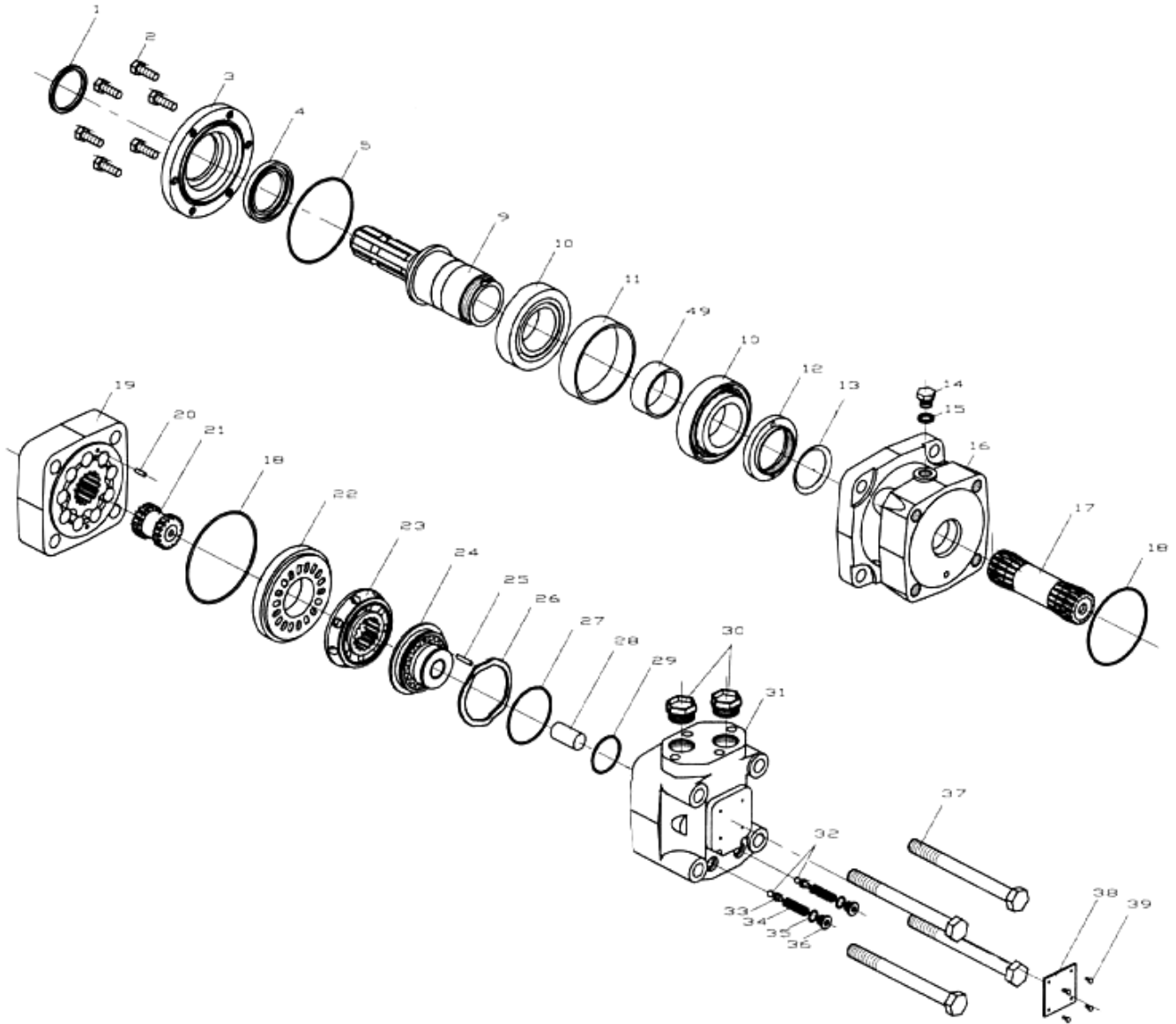
HYDRAULIC MOTOR # MLH-250

CUSHION VALVE H110



REF.	PART #	DESCRIPTION	QTY
kit	8368	Set of seals.....	1
11	8369	Key for "Orbit" motor	1




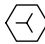



HYDRAULIC MOTOR MLHT160






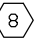
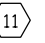
REF.	PART #	DESCRIPTION	QTY
kit	8372	Repair kit	1

TORQUE CHART

TORQUE SPECIFICATION TABLE

Thread UNC and UNF		Grade 2 				Grade 5   				Grade 8*   			
Bolt size		Torque				Torque				Torque			
Inches	mm	Pound feet min.	max.	Newton meters min.	max.	Pound feet min.	max.	Newton meters min.	max.	Pound feet min.	max.	Newton meters min.	max.
1/4	6.35	5	6	6.8	8.13	9	11	12.2	14.9	12	15	16.3	30.3
5/16	7.94	10	12	13.6	16.3	17	20.5	23.1	27.8	24	29	32.5	39.3
3/8	9.53	20	23	27.1	31.2	35	42	47.5	57.0	45	54	61.0	73.2
7/16	11.11	30	35	40.7	47.4	54	64	73.2	86.8	70	84	94.9	113.9
1/2	12.70	45	52	61.0	70.5	80	96	108.5	130.2	110	132	149.2	179.0
9/16	14.29	65	75	88.1	101.6	110	132	149.2	179.0	160	192	217.0	260.4
5/8	15.88	95	105	128.7	142.3	150	180	203.4	244.1	220	264	298.3	358.0
3/4	19.05	150	185	203.3	250.7	270	324	366.1	439.3	380	456	515.3	618.3
7/8	22.23	160	200	216.8	271.0	400	480	542.4	650.9	600	720	813.6	976.3
1	25.40	250	300	338.8	406.5	580	696	786.5	943.8	900	1080	1220.4	1464.5
1 1/8	25.58	-	-	-	-	800	880	1084.8	1193.3	1280	1440	1735.7	1952.6
1 1/4	31.75	-	-	-	-	1120	1240	1518.7	1681.4	1820	2000	2467.9	2712.0
1 3/8	34.93	-	-	-	-	1460	1680	1979.8	2278.1	2380	2720	3227.3	3688.3
1 1/2	38.10	-	-	-	-	1940	2200	2630.6	2983.2	3160	3560	4285.0	4827.4

* Thick nuts must be used with grade 8 bolts.

Size of screw	Thread	Pitch (mm)	Grade 4T  				Grade 7T 				Grade 8T  			
			Torque				Torque				Torque			
			Pound feet min.	max.	Newton meters min.	max.	Pound feet min.	max.	Newton meters min.	max.	Pound feet min.	max.	Newton meters min.	max.
M6	UNC	1.00	3.6	5.8	4.9	7.9	5.8	9.4	7.9	12.7	7.2	10	9.8	13.6
M8	UNC	1.25	7.2	14	9.8	19	17	22	23	29.8	20	26	27.1	35.2
M10	UNC	1.5	20	25	27.1	33.9	34	40	46.1	54.2	38	46	51.5	62.3
M12	UNC	1.75	28	34	37.9	46.1	51	59	69.1	79.9	57	66	77.2	89.4
M14	UNC	2.0	49	56	66.4	75.9	81	93	109.8	126	96	109	130.1	147.7
M16	UNC	2.0	67	77	90.8	104.3	116	130	157.2	176.2	129	145	174.8	196.5
M18	UNC	2.0	88	100	119.2	136	150	168	203.3	227.6	175	194	237.1	262.9
M20	UNC	2.5	108	130	146.3	176.2	186	205	252	277.8	213	249	288.6	337.4
M8	UNF	1.0	12	17	16.3	23	19	27	25.7	36.6	22	31	29.8	42
M10	UNF	1.25	20	29	27.1	39.3	35	47	47.4	63.7	40	52	54.2	70.5
M12	UNF	1.25	31	41	42	55.6	56	68	75.9	92.1	62	75	84	101.6
M14	UNF	1.5	52	64	70.5	86.7	90	106	122	143.6	107	124	145	168
M16	UNF	1.5	69	83	93.5	112.5	120	138	162.6	187	140	158	189.7	214.1
M18	UNF	1.5	100	117	136	158.5	177	199	239.8	269.6	202	231	273.7	313
M20	UNF	1.5	132	150	178.9	203.3	206	242	279.1	327.9	246	289	333.3	391.6

Use the above torques when special torque is not given.

NOTE: These values apply to fasteners as received from supplier, dry, or when lubricated with normal engine oil. They do not apply if extreme pressure lubricants are used.

WARRANTY

TENCO warrants this product to the initial purchaser for the period of one year from the date of purchase against defects in materials and workmanship.

We will replace or repair defective parts free of charge if they are returned to our plant in St-Valérien-de-Milton, Quebec, Canada.

Transportation charges are the responsibility of the customer. This warranty is not transferable.

Hydraulic cylinders are covered by the manufacturer of these items.

All TENCO spare parts purchased are covered by a three (3) month warranty.

This warranty becomes void and nul if the equipment is modified, breaks down as the result of an accident, is not operated according to manufacturer's recommendations, damaged by negligence or if maintenance has not been carried out as specified.

Our obligation is limited to the replacement or repair of the defective part. TENCO accepts no responsibility for direct or indirect consequential damages of any kind.



TENCO NEW ENGLAND INC.

450, North Main Street,
Barre, VT 05641
Tel.: (802) 476-3161, Fax: (802) 476-1003

LES MACHINERIES TENCO MACHINERY (CDN) Itée/Ité

1318, Principal, C.P./P.O. Box 60,
St-Valérien-de-Milton, Qc, Canada, J0H 2B0
Tel.: (450) 549-2411, Fax: (450) 549-2410
Website: www.tenco.ca

Made in Canada for: