



**OPERATOR'S / PARTS
MANUAL**



**TENCO SNOWBLOWER
Models
48T & 54T**

Copyright © Les Machineries Tenco Machinery (CDN) ltée/ltd, 2008

All rights reserved.

Printed in Canada.

TABLE OF CONTENTS

Section	Item	Page
1	Introduction	5
2	Safety	6
	General Safety	6
	Safety in operation	6
	Safety with Maintenance	7
	Safety in transport	7
	Safety in storage	7
3	Decals	8
	Safety Decals	8
	Maintenance Decals	8
4	Maintenance	9
5	Storage	10
6	Specifications	11
7	Parts List	12
	Snowblower 48T 54T	13
	Manual Chute Kit MD-4872	15
	Hydraulic Chute Kit (cylinder)	16
	Hydraulic Chute Kit (motor)	17
	Hydraulic circuit: Motor	18
	Gear Box 6550	19
	Cylinder 25TR04	20
	Hydraulic motor MLH125	21
	Hydraulic motor MLHS100	22
8	Torque chart	23
9	Warranty	24

INTRODUCTION

Your Snowblower was carefully designed and we are confident it will meet your requirements in terms of quality, performance and reliability.

This manual was prepared to assist you in the safe operation of your new Snowblower. It contains important information which will help you achieve excellent returns with your Snowblower.

Please read this manual completely before operating your Snowblower and keep it for future reference.

Before starting the machine, you or any other person who will be operating the Snowblower must familiarize yourself with the safety recommendations and the operating instructions. Please read carefully and be sure to understand and follow all recommendations and procedures.

In this manual, the right and left sides are identified as shown on Figure 1.

If you require additional information on your Snowblower, please contact your TENCO Dealer.

NOW take a moment to enter the model, serial number and the date of purchase of your Snowblower in the space provided.

When ordering parts from your Dealer, please refer to these numbers for a fast and efficient service. Use TENCO parts for replacement.

The model and serial numbers are on the name plate shown on Fig. 1.

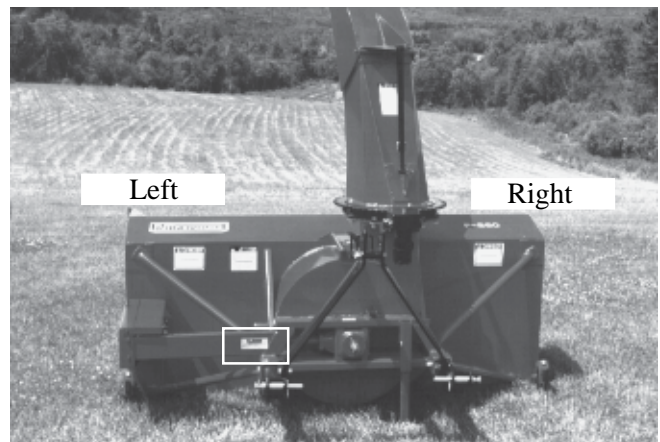


Figure 1

MODEL: _____ ✍

SERIAL NO.: _____ ✍

DATE OF PURCHASE: _____ ✍

SAFETY

GENERAL SAFETY

WHEN YOU SEE THIS SYMBOL



ATTENTION!

**BE ALERT
YOUR SAFETY IS INVOLVED**

This symbol «**SAFETY ALERT**» is used in this manual and on the safety decals on the Snowblower. It warns you of the possibility of danger. Carefully read, understand and follow all safety recommendations before operating the Snowblower.

- 1) Careful operation is the best assurance against accidents. Carefully read this manual and follow all recommendations before operating your Snowblower. It is the owner's responsibility to make sure that anyone who will operate the Snowblower will read this manual before operating the equipment.
- 2) Familiarize yourself with all controls and always be ready to stop the Snowblower quickly in case of emergency.
- 3) Never let a child operate the Snowblower.
- 4) Do not modify the Snowblower. Any non authorized modification may affect the efficiency and/or safety of the equipment.
- 5) Never operate the Snowblower with defective parts or if damaged in any way. Have it repaired before operating.
- 6) Make sure all fasteners are in place and properly secured or tightened. Refer to torque chart on page 23.
- 7) Avoid wearing loose fitting clothing when working with the Snowblower. These could get entangled in moving parts of the equipment and cause accidents.

- 8) Prolonged exposure to noise may hamper hearing. Protect yourself by wearing adequate protection devices.
- 9) Hydraulic fluids under pressure can damage your skin. Do not use your hands to locate a leak.
- 10) Before the beginning of the snow season, inspect all areas where the Snowblower will be used and remove any object which may cause an accident and/or damage the equipment.
- 11) Never operate your Snowblower in poor visibility or without proper lighting conditions.

SAFETY IN OPERATION

- 1) Never raise the snowblower more than 5' to avoid tilting tractor forward.
- 2) Be sure there are no obstructions around the equipment and that no one stands near the equipment when in operation.
- 3) Do not operate an engine in a confined or non ventilated area.
- 4) Do not perform any adjustments, cleaning, maintenance or repairs with the engine running. The engine must be stopped and the P.T.O. disengaged. Preferably remove the key from the ignition.
- 5) Wear adequate clothing when working in cold or windy conditions.
- 6) Before starting-up the Snowblower, make sure the auger and drum areas are free of ice.
- 7) Place control handle in neutral position before starting engine.
- 8) Keep hands, feet and clothing away from moving parts of the Snowblower. Stay away from the discharge chute.
- 9) Before unplugging the chute, always disengage the P.T.O., stop the engine and relieve all hydraulic pressures.

SAFETY (cont'd)

- 10) Do not operate in excessive inclined conditions. Be careful when turning in slopes.
- 11) Never operate your Snowblower with missing guards or without protective devices in place.
- 12) Do not operate your Snowblower near buildings, windows or other vehicles without prior and proper adjustment of the chute deflector.
- 13) Never aim discharge chute towards people or animals. This may cause serious injuries.
- 14) Always reduce operating speed in slippery conditions.
- 15) Be careful when backing-up, make sure you have good visibility.
- 16) Always be on the lookout for objects which may enter the Snowblower.
- 17) If undue vibrations are felt, disengage the oil motor., stop the motor and look for the cause of the vibration. Vibration is usually the indication of a problem.
- 18) At the end of the operation, disengage the oil motor, lower the Snowblower, put transmission in neutral, apply parking brake, stop engine and remove the key from the ignition.

SAFETY WITH MAINTENANCE

- 1) Perform the Snowblower maintenance according to recommendations contained in this manual.
- 2) Stop engine and relieve all hydraulic pressures before doing inspection, maintenance or repairs.
- 3) Never perform any work under the Snowblower while it is supported only by the tractor's hydraulic system. It must be completely supported by wooden blocks or other safe means.

SAFETY IN TRANSPORT

- 1) On public roads, use proper safety lights and check local regulations.
- 2) Be alert while driving on the road. Never carry passengers.
- 3) Always disengage the oil motor while moving from one area of work to another.
- 4) Never exceed the speed that permits full steering and braking control at all times.
- 5) Be careful while backing up, make sure you have good visibility.

SAFETY IN STORAGE

- 1) Provide adequate supports to prevent any accidental overturning of the Snowblower.
- 2) Do not let children play in the area where the Snowblower is stored.

DECALS

SAFETY DECALS

The safety decals are affixed wherever special safety precautions are indicated. Locate them on the machine and read them carefully. If a decal is damaged, lost or illegible, install a new one. Each decal is shown and identified with a part number.

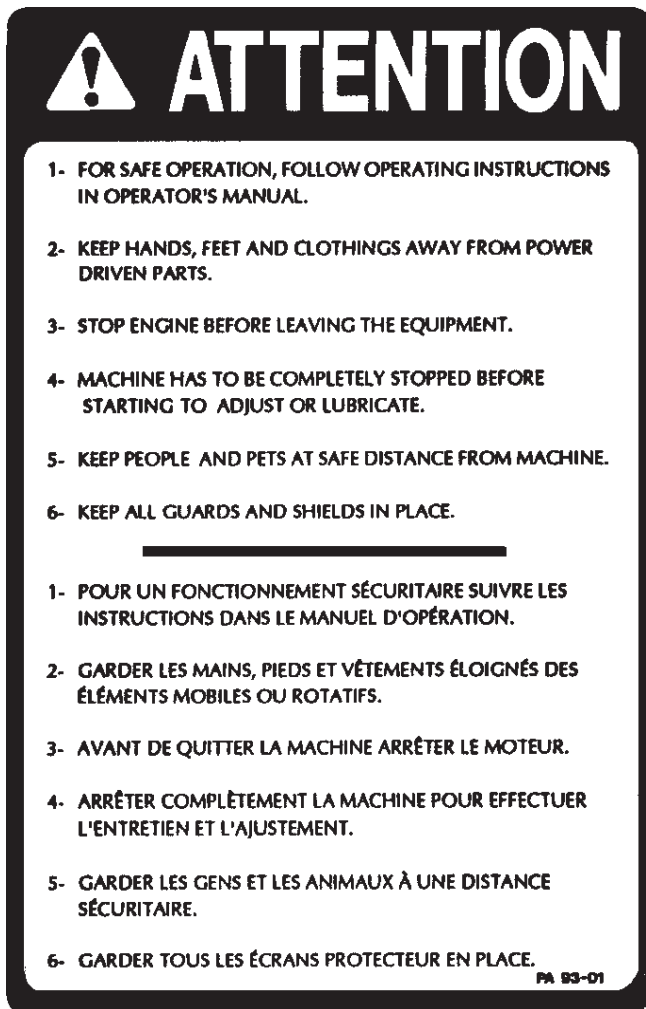


Figure 2
Part no.: A102

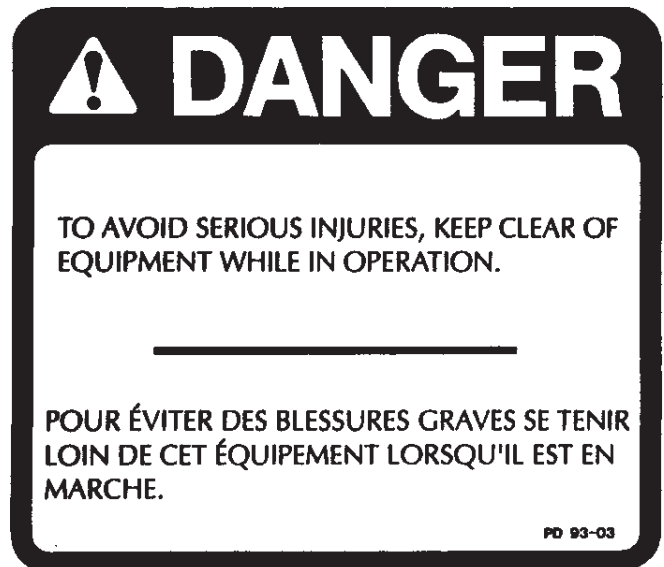


Figure 3
Part no.: A101

MAINTENANCE DECALS

The maintenance decals indicate the points requiring lubrication. Refer to maintenance section for more details.



Figure 4
Part no.: A104



Figure 5
Part no.: A 106

MAINTENANCE

- 1) Wipe off all grease fittings with a clean cloth before adding grease in order to avoid injecting dirt and sand.
- 2) Repair or replace damaged grease fittings.
- 3) Lubricate all grease fittings every 10 hours of operation.
- 4) Oil drive chain every 8 hours of operation.
- 5) Check oil level in gear box once a month. If necessary add oil.
- 6) Check tension of drive chain every 25 hours of operation and adjust if necessary.
- 7) Check for tightness of bearing collars every 50 hours of operation.
- 8) Change gearbox oil once a year. Use gear box oil S.A.E. W90 rated API, class GL-5.
- 9) Check all nuts and bolts once a year. If necessary use torque chart on page 23.

STORAGE

- 1) Store the Snowblower in a cool, dry place.
- 2) Support the Snowblower with wooden blocks.
- 3) Keep all piston rods in the retracted position. This will assure better protection against the elements.
- 4) Clean your Snowblower.
- 5) Thoroughly inspect all parts of the Snowblower. Replace or repair worn or defective parts.
- 6) Touch-up or repaint if necessary.
- 7) Lubricate all points before storage.

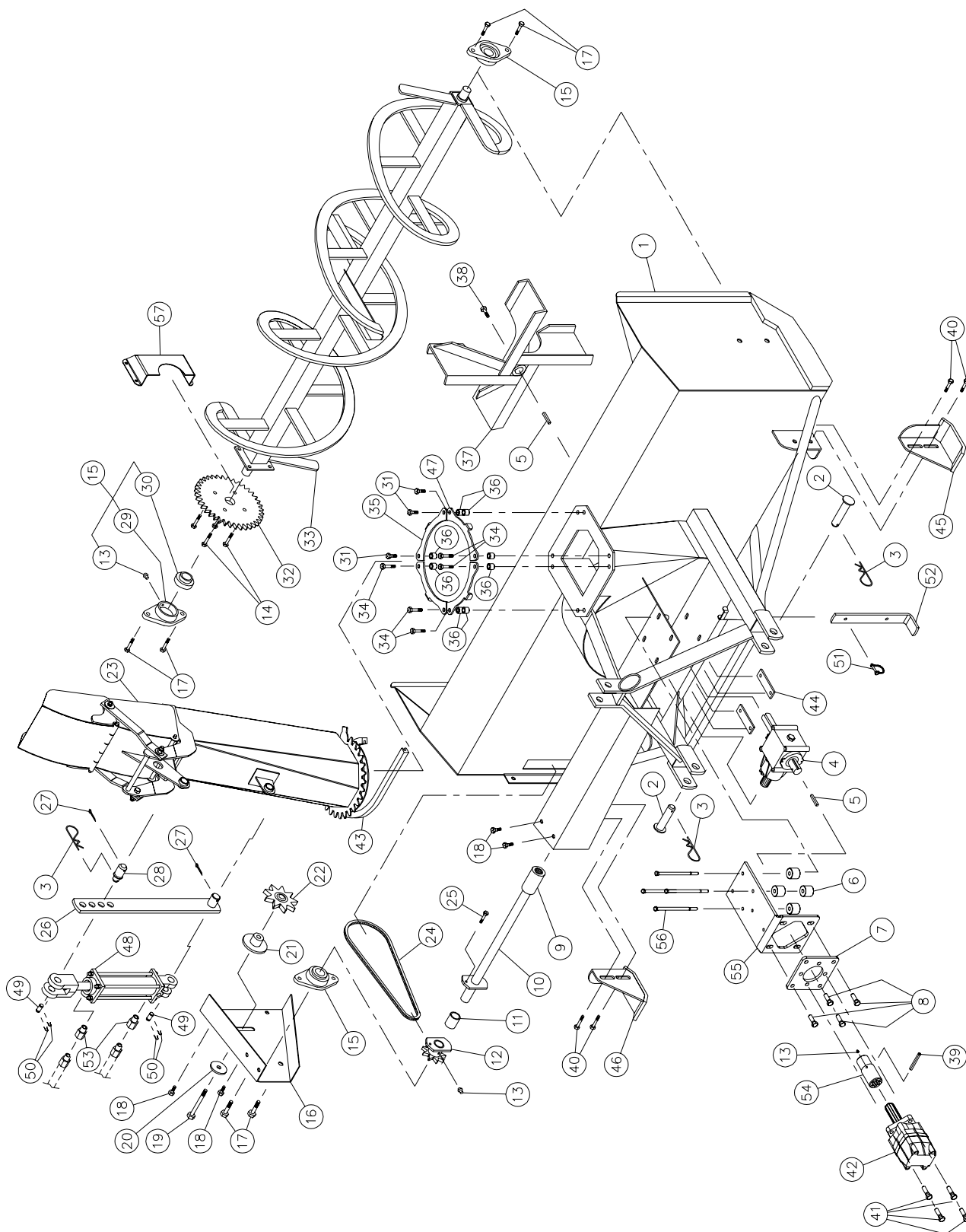
SNOWBLOWER SPECIFICATIONS

MODEL	48T	54T
Horse power recommended	15 to 20 GPM at 2500 psi (approx. 15 to 19 HP)	
Drive motor	MLHS100	
Working width	48"	54"
Cutting height	24½"	
Impeller diameter	20"	
Depth of drum	6"	
Impeller blades	4	
Size of impeller shaft	1"	
Impeller RPM	540	
Main auger diameter	16"	
Drive chain	50	
Hitch category	1	
Chute rotation on UHMW	Standard	
Adjustable skid shoes	Standard	
Manual chute rotation kit opt.	MD-4872	
Hyd. cyl. chute rotation kit opt.	HRD-4872	
Hyd. motor chute rotation kit opt.	HMD-4872	
Cylinder for hyd. chute rotation opt.	25TR04	
Motor for hyd. chute rotation opt.	MLH-125	
Cylinder for deflector hyd. control opt.	25TR04	
App. weight	385 lbs	392 lbs

Design and specifications subject to change without notice.

SNOWBLOWERS 48T 54T

170-04971



SNOWBLOWERS 48T 54T (cont'd)

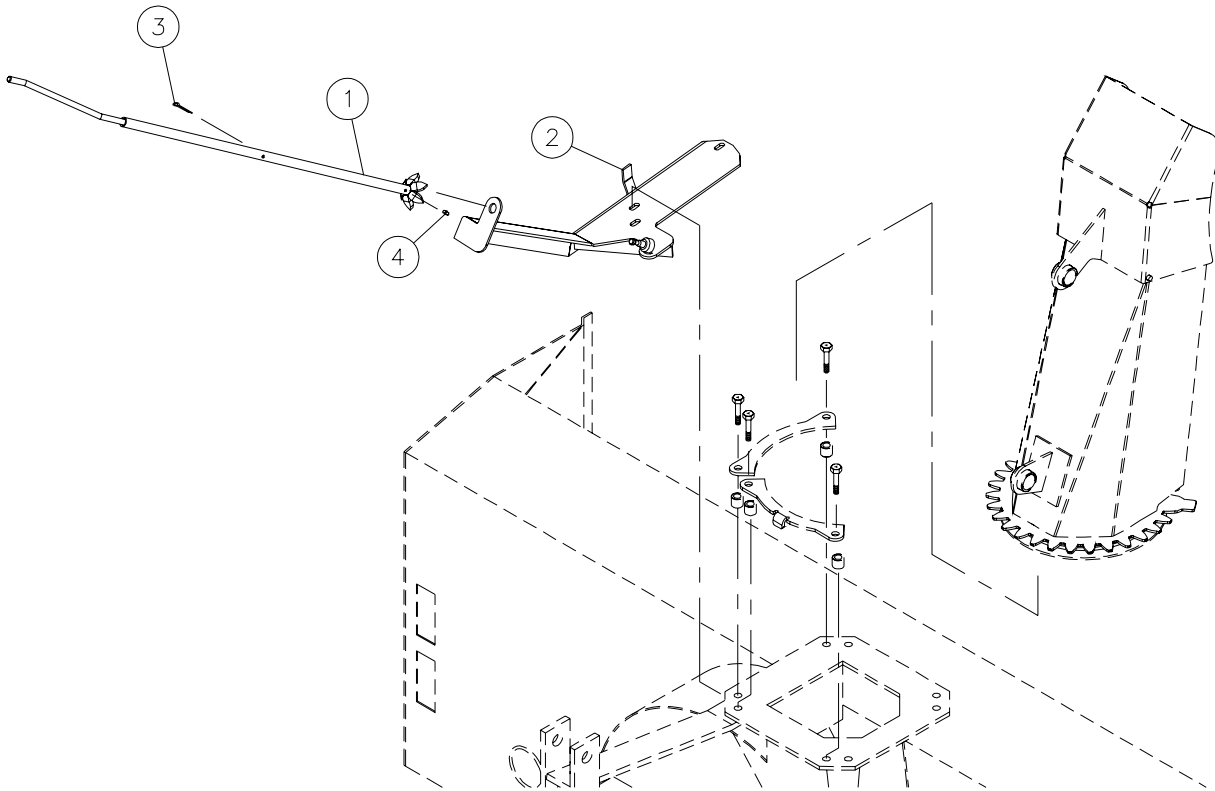
REF.	PART #	DESCRIPTION	QTY	
			48T	54T
1	120-04502	Frame 48"	1	-
1	120-00543	Frame 54"	-	1
2	110-03331	Pin category 1	2	2
3	Std.	Hitch pin clip 5/32"	3	3
4	6550	Gear box 1" ø x 1-15 splines	1	1
5	140-03871	Key 1/4" x 1/4" x 1 5/8" lg	2	2
6	160-07571	Spacer for motor support MLHS 1/2" x 1 1/2" x 1 3/8" lg	4	4
7	130-26911	Mounting plate for MLHS motor	1	1
8	300-40325	Bolt 1/2" NC x 1 3/4" lg + nylon locknut + flat washer	4	4
9	6565	Splined adaptor 1"-15	1	1
10	110-22591	Auger drive shaft 18 1/4" lg overall (including #9)	1	-
10	110-02821	Auger drive shaft 21 1/4" lg overall (including #9)	-	1
11	6566	Bushing 1" i.d. x 1 1/8" o.d. x 1 1/2" lg	1	1
12	6567	Sprocket # 50 + shearplate (including # 11 and # 13)	1	1
13	Std.	Grease fitting 1/4"-28 straight	5	5
14	300-36280	Bolt 3/8" NC x 1 1/4" lg + two-way locknut	4	4
15	6261	Bearing 1"ø + flange	3	3
16	130-03301	Chain guard	1	1
17	300-40250	Bolt 1/2" NC x 1" lg + nylon locknut (thin)	6	6
18	300-36250	Bolt 3/8" NC x 1" lg + nylon locknut	4	4
19	300-40400	Bolt 1/2" NC x 3" lg + nylon locknut	1	1
20	378-40340	Flat washer 1/2" i.d. x 2" o.d.	1	1
21	110-07732	Idler	1	1
22	6604	Idler sprocket #50	1	1
23	110-39601	Chute PSI-4854-T	1	1
24	190-00501	Chain #50 x 50 1/2" lg	1	1
24	26A50	Connecting link #50	1	1
24	59-50	Offset link #50	1	1
25	312-32250	Shear bolt 1/4" NC x 1" lg grade 2 + nylon locknut	1	1
26	110-02981	Chute adjusting bar	1	1
27	Std.	Cotter pin 5/32" x 1 1/2"	2	2
28	150-00641	Pin for chute adjusting bar	1	1
29	6454	Flange	3	3
30	6455	Bearing 1" ø	3	3
31	300-36325	Bolt 3/8" NC x 1 3/4" lg + nylon locknut & flat washer	3	3
32	6288	Sprocket 50A36 T 1" ø	1	1
33	110-22631	Auger for PUMA-48T	1	-
33	110-02941	Auger for PUMA-54T	-	1
34	300-36340	Bolt 3/8" NC x 2" lg + nylon locknut + flat washer	5	5
35	130-18392	Chute retaining bracket	3	3
36	160-07371	Spacer 11/16" o.d. x 7/16" i.d. x 5/8" lg	8	8
37	110-02871	Impeller 6" x 20" ø 4 blades T 1" ø	1	1
38	329-34280	Impeller cap screw 5/16" x 1 1/4" lg + lock washer	1	1
39	Std.	Roll pin	1	1
40	300-38280	Bolt 7/16" NC x 1 1/4" lg + nylon locknut + flat washer	4	4
41	300-40340	Bolt 1/2" NC x 2" lg + nylon locknut	4	4
42	MLHS-100	Hydraulic motor for oil flow 15 to 20 gal. (develops 15 to 19 HP.)	1	1
43	190-04081	U-shaped UHMW x 32 9/16" lg	1	1
44	140-11011	Back plate	2	2

SNOWBLOWERS 48T 54T (cont'd)

REF.	PART #	DESCRIPTION	QTY	
			48T	54T
45	110-15341	Skid shoe (right side)	1	1
46	110-15342	Skid shoe (left side)	1	1
47	130-18393	Chute retaining bracket	1	1
48	25TR04	Cylinder 2 1/2" dia. x 4" stroke	opt.	opt.
49	6004	Pin 1" x 3 1/8" lg (2)	opt.	opt.
50	Std.	Hairpin cotter 7/8" (4)	opt.	opt.
51	8112	Lock pin 1/4"	1	1
52	140-23311	Storage support	1	1
53	RS-1/16x08NPT	Kit of two unidirectionnal restrictors 110-39711	opt.	opt.
54	110-19541	Adaptor 1 3/8"-6 x 1" round x 4 3/4" lg	1	1
55	130-20383	Mounting plate for hydraulic motor MLHS 4854T	1	1
56	300-36640	Bolt 3/8" NC x 7" lg + nylon locknut + flat washer	4	4
57	130-70631	Inside guard (bolted)	1	1

MANUAL CHUTE KIT MD-4872

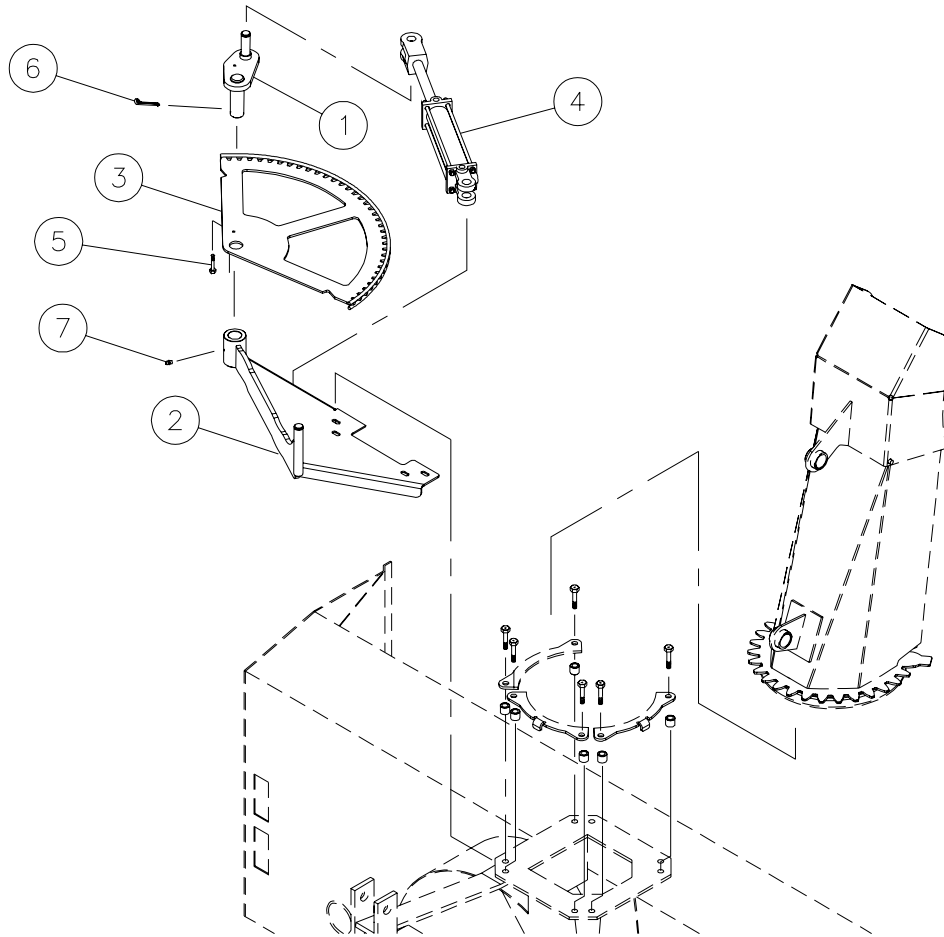
170-04301



REF.	PART #	DESCRIPTION	QTY
1	110-27702	Crank	1
2	110-27712	Base	1
3	Std.	Roll pin 1/4" x 1 3/4" lg.	1
4	Std.	Grease fitting 1/4"-28 straight	1

HYDRAULIC CYLINDER CHUTE KIT HRD-4872

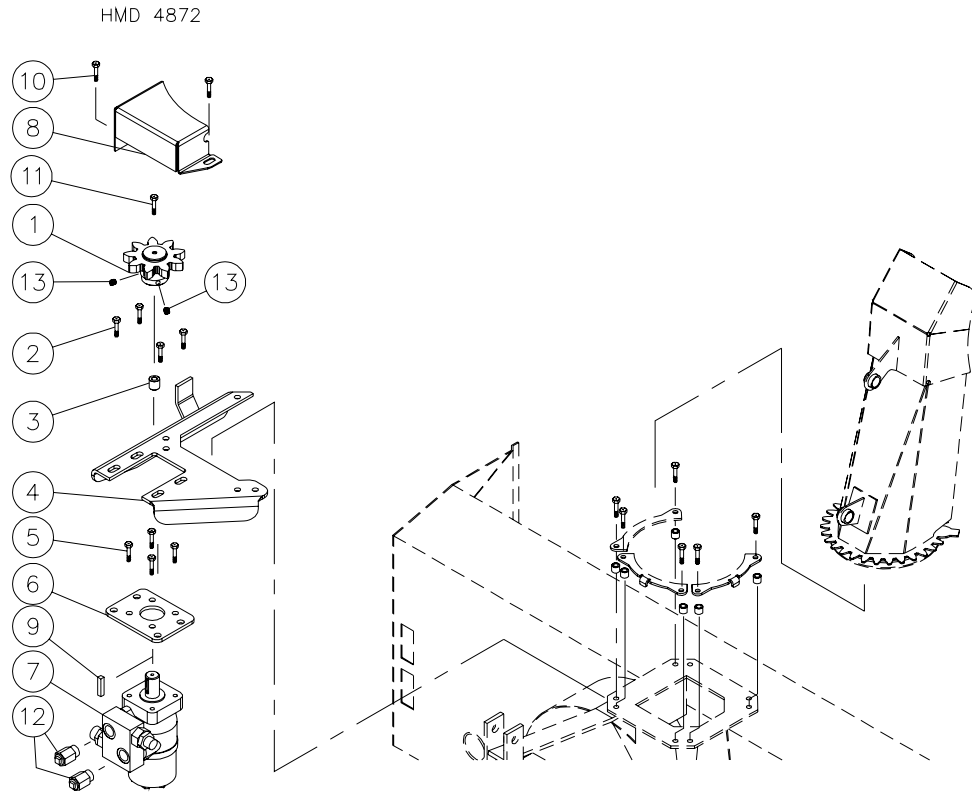
170-04311



REF.	PART #	DESCRIPTION	QTY
1	110-27653	Shearplate	1
2	110-27583	Base	1
3	110-27613	Rack gear	1
4	25TR04	Cylinder 2 1/2" x 4" stroke	1
5	Std.	Bolt 1/4" NC x 1 1/2" lg grade 5 + nylon locknut	1
6	Std.	Cotter pin 1/4" x 2"	1
7	Std.	Grease fitting 1/4"-28 straight	1

HYDRAULIC ORBIT CHUTE KIT HMD-4872

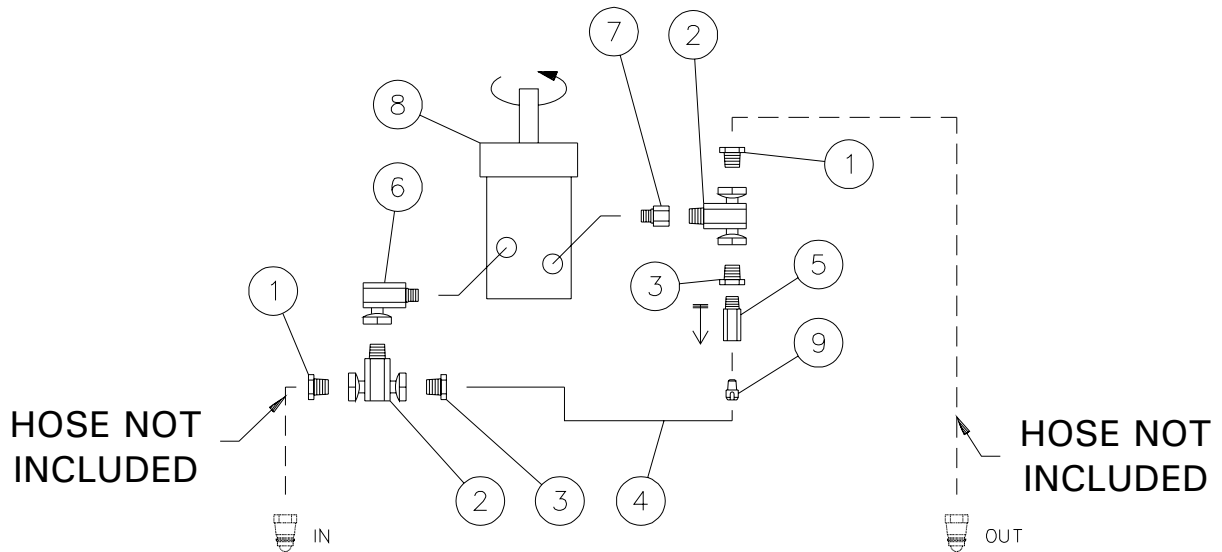
170-04321T



REF.	PART #	DESCRIPTION	QTY
1	110-32171	Sprocket	1
2	300-38280	Bolt 7/16" NC x 1 1/4" lg + flat washer & nylon locknut	4
3	160-19701	Spacer	1
4	110-32531	Base	1
5	300-36250	Bolt 3/8" NC x 1" + lock washer	4
6	130-53751	Orbit motor support	1
7	MLH-125	Hydraulic motor with cushion valve for tractor with pump approx. 6 to 10 GPM opt.	
8	130-54731	Safety guard	1
9	8369	Key for "Orbit motor"	1
10	300-36250	Bolt 3/8" NC x 1" lg + flat washer & nylon locknut	2
11	300-32280	Bolt 1/4" NC x 1 1/4" lg + lock washer	1
12	110-37971	Restrictor	2

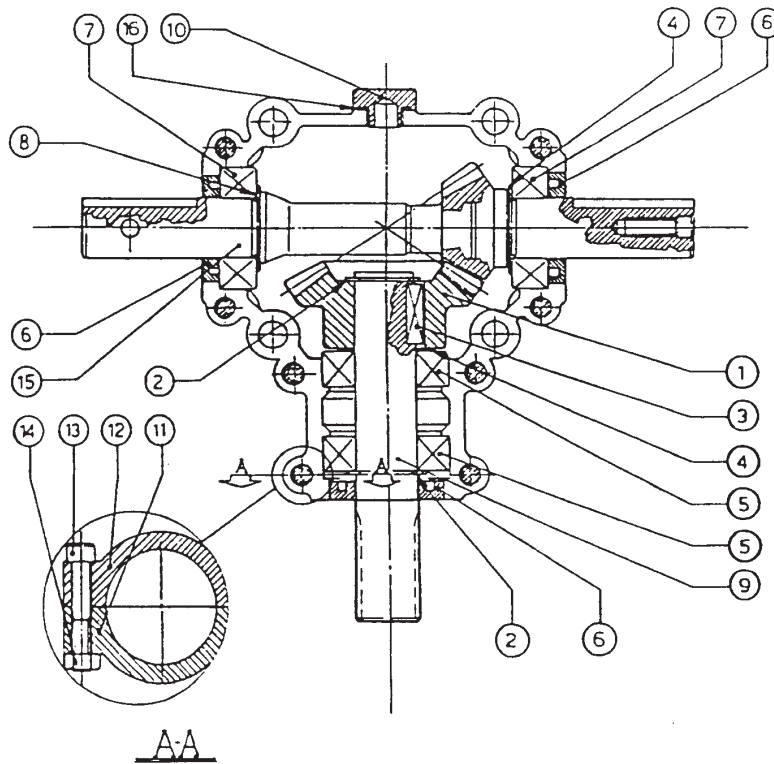
HYDRAULIC CIRCUIT

170-03031R2



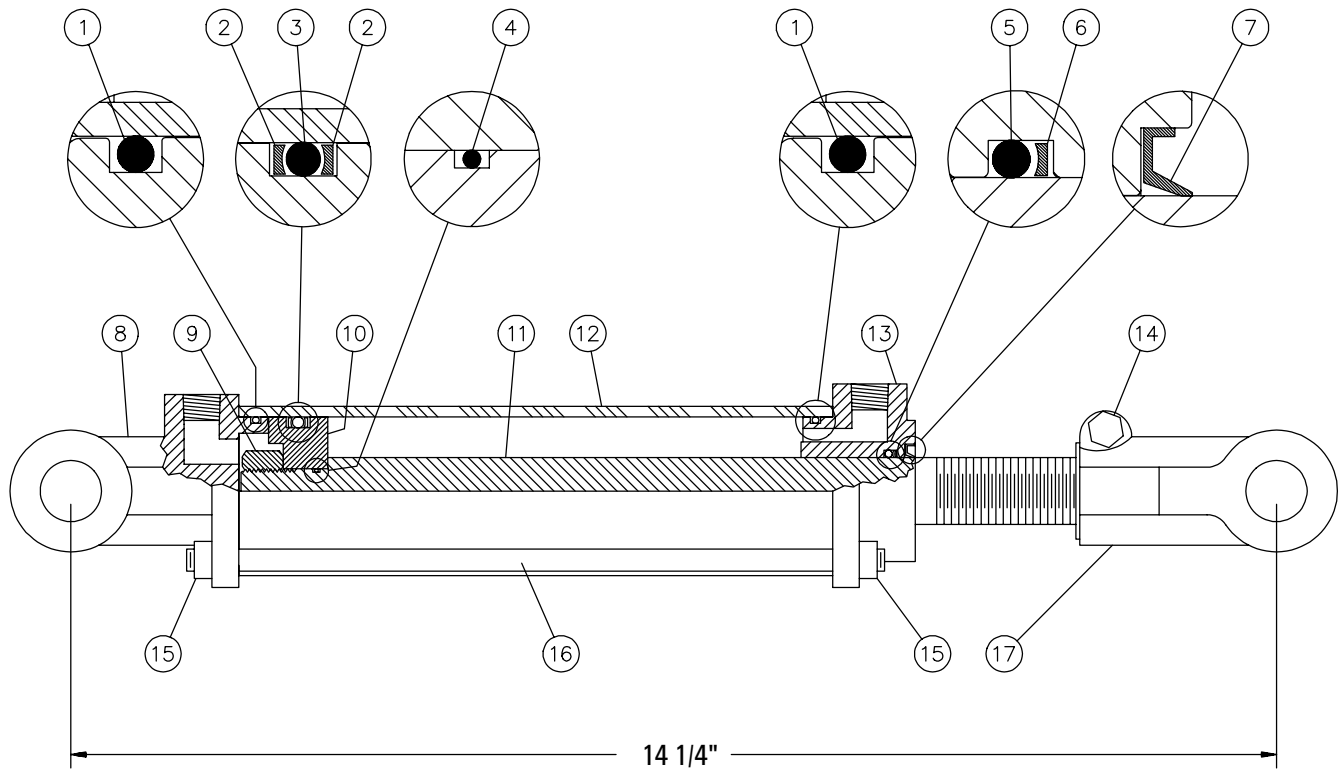
REF.	PART #	DESCRIPTION	QTY
			MLHS-100
1	3159-12	Plug	1
2	9457-12-12	«T» fitting	2
3	3109-12-08	Fitting (reducer)	2
4	190-05241	Hose 3/8" R1 x 20" lg + 2 fittings 6U108	1
5	3209-08-08	Fitting	1
6	9405-08-08	Fitting 90 deg.	1
7	3269-10-12	Straight fitting	1
8	MLHS-100	Hydraulic motor MLHS-100	1
9	03-0274A	Check valve	1

GEAR BOX # 6550



REF.	PART #	DESCRIPTION	QTY
1	6547	Gear Z24	1
2	6548	Outside circlip	2
3	6549	Parallel key 8 x 7 x 25	1
4	6562	Shim	2
5	6205-2RS	Bearing 6205	2
6	6552	Oil seal	3
7	6205-2RSx1"	Bearing	2
8	6554	Shim	1
9	6555	Side shaft 1" - 15 splines	1
10	6556	Plug 3/8" GAS	1
11	6557	Casing A	1
12	6558	Casing A	1
13	6559	Bolt M8 x 45 8,8	8
14	6428	Hex. nut M8 8	8
15	6560	Pinion shaft Z16 for impeller (1" & 1")	1
16	6425	O-ring OR-3062	1

CYLINDER 25TR04

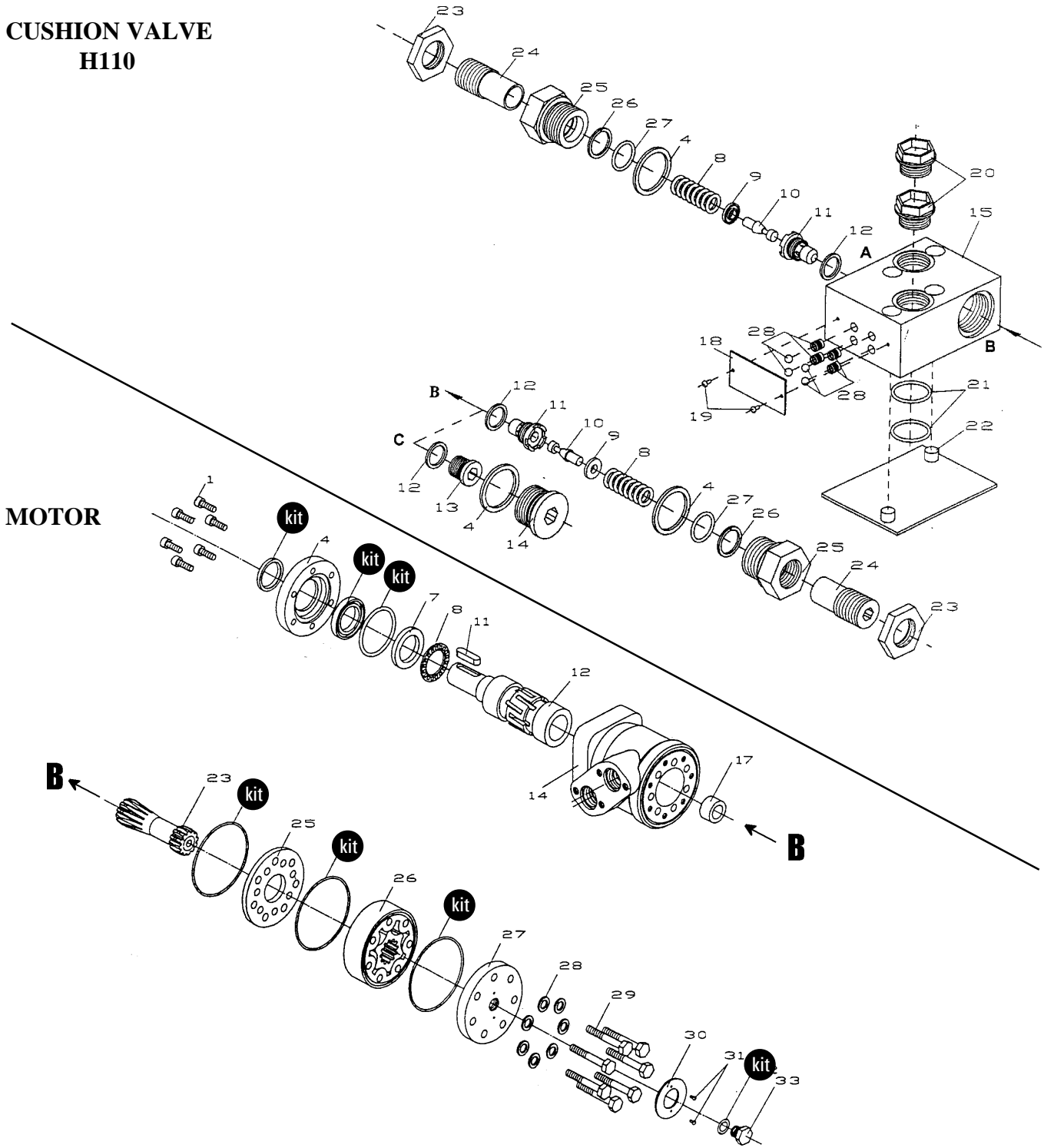


REF.	PART #	DESCRIPTION	QTY
1	See #RK25TR	O-ring 1/8" x 2 1/4" x 2 1/2"	2
2	See #RK25TR	Back-up 2 1/2" o.d. x 3/16 ø	2
3	See #RK25TR	O-ring 3/16" x 2 1/8" x 2 1/2"	1
4	See #RK25TR	O-ring 1/16" x 5/8" x 3/4"	1
5	See #RK25TR	O-ring 1/8" x 1 1/8" x 1 3/8"	1
6	See #RK25TR	Back-up 1 3/8" o.d. x 1/8" ø	1
7	See #RK25TR	Wiper 1 1/8" i.d. x 1 5/8" o.d.	1
8	492401	Yoke (for 2 1/2" tube)	1
9	338-46000	Nut 3/4" NF	1
10	4924-31	Piston 2 1/2" ø	1
11	491980-04	Piston rod 1 1/8"	1
12	491668-04	Cylinder body 2 1/2" ø	1
13	492421	Head (for 2 1/2" tube)	1
14	300-36355	Bolt 3/8" NC x 2 1/4" + nut	1
15	336-36000	Nut 3/8" NC	8
16	Std.	Threaded rod 3/8" NC x 8" lg	4
17	458599	Yoke (for 1 1/8" rod)	1
NI*	8183	Pin 1" ø + cotter pin	2
NI*	RK25TR	Repair kit for 2 1/2" cylinder (includes # 1, 2, 3, 4, 5, 6, & 7)	1

*NI = NOT ILLUSTRATED

HYDRAULIC MOTOR # MLH-125

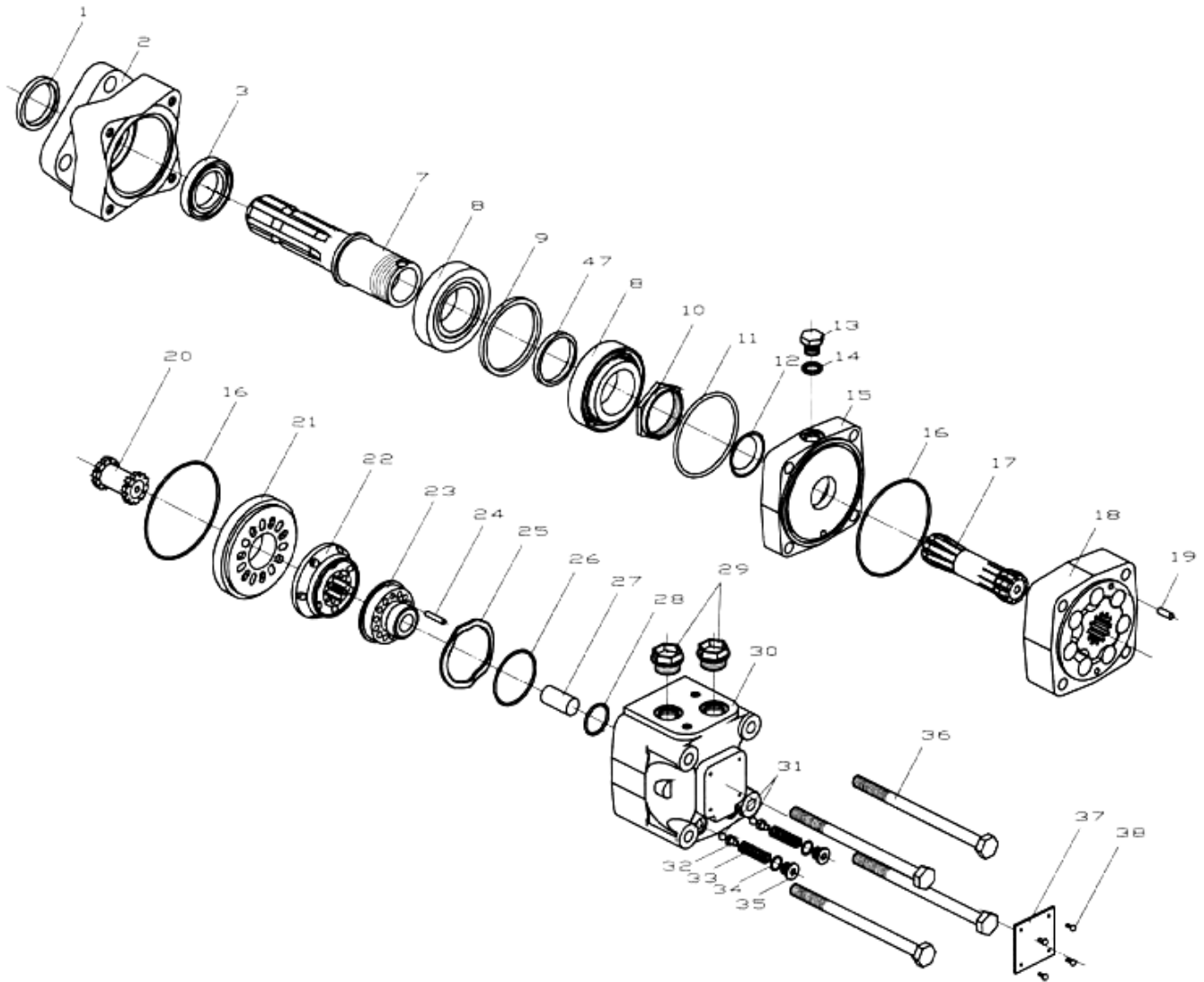
CUSHION VALVE H110



REF.	PART #	DESCRIPTION	QTY
kit	8368	Set of seals.....	1
11	8369	Key for "Orbit" motor	1

10




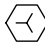



HYDRAULIC MOTOR MLHS100






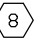
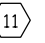
REF.	PART #	DESCRIPTION	QTY
kit	8371	Repair kit	1

TORQUE CHART

TORQUE SPECIFICATION TABLE

Thread UNC and UNF		Grade 2 				Grade 5   				Grade 8*   			
Bolt size		Torque				Torque				Torque			
Inches	mm	Pound feet min.	max.	Newton meters min.	max.	Pound feet min.	max.	Newton meters min.	max.	Pound feet min.	max.	Newton meters min.	max.
1/4	6.35	5	6	6.8	8.13	9	11	12.2	14.9	12	15	16.3	30.3
5/16	7.94	10	12	13.6	16.3	17	20.5	23.1	27.8	24	29	32.5	39.3
3/8	9.53	20	23	27.1	31.2	35	42	47.5	57.0	45	54	61.0	73.2
7/16	11.11	30	35	40.7	47.4	54	64	73.2	86.8	70	84	94.9	113.9
1/2	12.70	45	52	61.0	70.5	80	96	108.5	130.2	110	132	149.2	179.0
9/16	14.29	65	75	88.1	101.6	110	132	149.2	179.0	160	192	217.0	260.4
5/8	15.88	95	105	128.7	142.3	150	180	203.4	244.1	220	264	298.3	358.0
3/4	19.05	150	185	203.3	250.7	270	324	366.1	439.3	380	456	515.3	618.3
7/8	22.23	160	200	216.8	271.0	400	480	542.4	650.9	600	720	813.6	976.3
1	25.40	250	300	338.8	406.5	580	696	786.5	943.8	900	1080	1220.4	1464.5
1 1/8	25.58	-	-	-	-	800	880	1084.8	1193.3	1280	1440	1735.7	1952.6
1 1/4	31.75	-	-	-	-	1120	1240	1518.7	1681.4	1820	2000	2467.9	2712.0
1 3/8	34.93	-	-	-	-	1460	1680	1979.8	2278.1	2380	2720	3227.3	3688.3
1 1/2	38.10	-	-	-	-	1940	2200	2630.6	2983.2	3160	3560	4285.0	4827.4

* Thick nuts must be used with grade 8 bolts.

Size of screw	Thread	Pitch (mm)	Grade 4T  				Grade 7T 				Grade 8T  			
			Torque				Torque				Torque			
			Pound feet min.	max.	Newton meters min.	max.	Pound feet min.	max.	Newton meters min.	max.	Pound feet min.	max.	Newton meters min.	max.
M6	UNC	1.00	3.6	5.8	4.9	7.9	5.8	9.4	7.9	12.7	7.2	10	9.8	13.6
M8	UNC	1.25	7.2	14	9.8	19	17	22	23	29.8	20	26	27.1	35.2
M10	UNC	1.5	20	25	27.1	33.9	34	40	46.1	54.2	38	46	51.5	62.3
M12	UNC	1.75	28	34	37.9	46.1	51	59	69.1	79.9	57	66	77.2	89.4
M14	UNC	2.0	49	56	66.4	75.9	81	93	109.8	126	96	109	130.1	147.7
M16	UNC	2.0	67	77	90.8	104.3	116	130	157.2	176.2	129	145	174.8	196.5
M18	UNC	2.0	88	100	119.2	136	150	168	203.3	227.6	175	194	237.1	262.9
M20	UNC	2.5	108	130	146.3	176.2	186	205	252	277.8	213	249	288.6	337.4
M8	UNF	1.0	12	17	16.3	23	19	27	25.7	36.6	22	31	29.8	42
M10	UNF	1.25	20	29	27.1	39.3	35	47	47.4	63.7	40	52	54.2	70.5
M12	UNF	1.25	31	41	42	55.6	56	68	75.9	92.1	62	75	84	101.6
M14	UNF	1.5	52	64	70.5	86.7	90	106	122	143.6	107	124	145	168
M16	UNF	1.5	69	83	93.5	112.5	120	138	162.6	187	140	158	189.7	214.1
M18	UNF	1.5	100	117	136	158.5	177	199	239.8	269.6	202	231	273.7	313
M20	UNF	1.5	132	150	178.9	203.3	206	242	279.1	327.9	246	289	333.3	391.6

Use the above torques when special torque is not given.

NOTE: These values apply to fasteners as received from supplier, dry, or when lubricated with normal engine oil. They do not apply if extreme pressure lubricants are used.

WARRANTY

TENCO warrants this product to the initial purchaser for the period of one year from the date of purchase against defects in materials and workmanship.

We will replace or repair defective parts free of charge if they are returned to our plant in St-Valérien-de-Milton, Quebec, Canada.

Transportation charges are the responsibility of the customer. This warranty is not transferable.

Hydraulic cylinders are covered by the manufacturer of these items.

All TENCO spare parts purchased are covered by a three (3) month warranty.

This warranty becomes void and nul if the equipment is modified, breaks down as the result of an accident, is not operated according to manufacturer's recommendations, damaged by negligence or if maintenance has not been carried out as specified.

Our obligation is limited to the replacement or repair of the defective part. TENCO accepts no responsibility for direct or indirect consequential damages of any kind.



TENCO NEW ENGLAND INC.

450, North Main Street,
Barre, VT 05641
Tel.: (802) 476-3161, Fax: (802) 476-1003

LES MACHINERIES TENCO MACHINERY (CDN) Itée/Ité

1318, Principal, C.P./P.O. Box 60,
St-Valérien-de-Milton, Qc, Canada, J0H 2B0
Tel.: (450) 549-2411, Fax: (450) 549-2410
Website: www.tenco.ca

Made in Canada for: