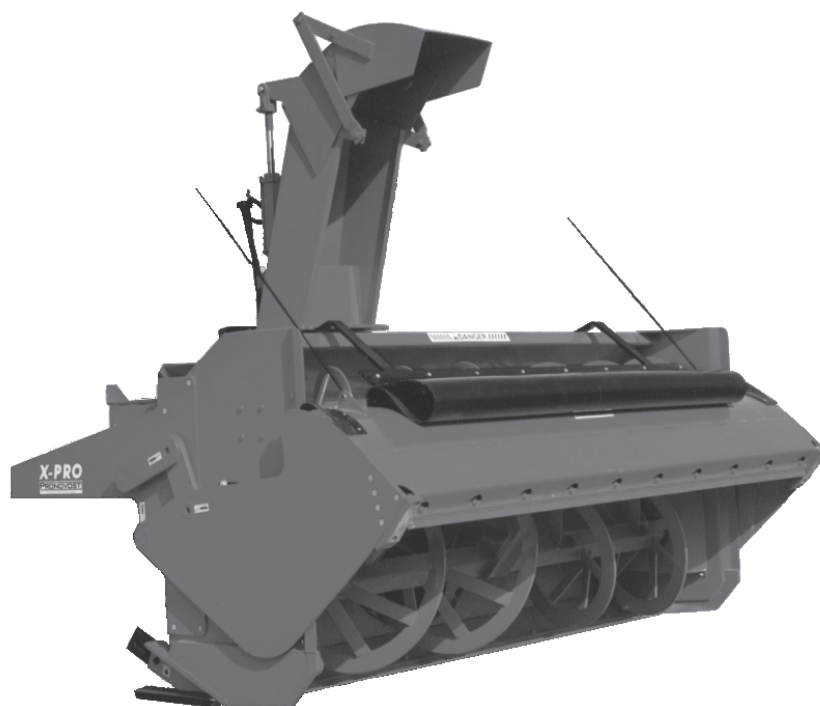




## **OPERATOR'S / PARTS MANUAL**



### ***X-PRO Blades***

#### **Models**

**XP-740 & XP-740TRC**

**XP-800 & XP-800TRC**

**XP-860 & XP-860TRC**

**XP-920 & XP-920TRC**

**XP-980 & XP-980TRC**

**XP-862 & XP-862TRC**

**XP-992 & XP-992TRC**

**XP-860-92 & XP-860TRC-92**

**XP-920-98 & XP-920TRC-98**

**XP-1040 & XP1040-TRC**

VISIT OUR WEBSITE



[www.pronovost.qc.ca](http://www.pronovost.qc.ca)

Copyright © Les Machineries Pronovost Inc., 2002

All rights reserved.  
Printed in Canada.

---



---

# **TABLE OF CONTENTS**

---

<b>Section</b>	<b>Item</b>	<b>Page</b>
<b>1</b>	<b>Introduction .....</b>	<b>5</b>
<b>2</b>	<b>Safety .....</b>	<b>6</b>
	General Safety .....	6
	Safety in Operation .....	6
	Safety with Maintenance .....	7
	Safety in Transport .....	7
	Safety in Storage .....	7
<b>3</b>	<b>Decals .....</b>	<b>8</b>
	Safety Decals .....	8
	Maintenance Decals .....	8
<b>4</b>	<b>Start-up .....</b>	<b>9</b>
<b>5</b>	<b>Maintenance .....</b>	<b>10</b>
<b>6</b>	<b>Storage .....</b>	<b>10</b>
<b>7</b>	<b>Specifications .....</b>	<b>11</b>
<b>8</b>	<b>Parts List .....</b>	<b>12</b>
	<i>X-PRO</i> XP-740, XP-800, XP-860, XP-860-92, XP-920, XP-920-98 .....	12
	<i>X-PRO</i> XP-862, XP-992, XP-980, XP-1040 .....	16
	Scraper blade & skid shoes .....	20
	Cylinder 30TR06 & 30TR08 .....	22
<b>9</b>	<b>Torque chart .....</b>	<b>23</b>
<b>10</b>	<b>Warranty .....</b>	<b>24</b>



# INTRODUCTION

## CONGRATULATIONS!

Thank you for choosing PRONOVOST. We are confident this equipment will meet your requirements in terms of quality, performance and reliability.

This manual was prepared to assist you in the safe operation of your new *X-PRO BLADE*. It contains important information which will help you achieve excellent returns with your *X-PRO BLADE* for years to come.

Please read this manual completely before operating your *X-PRO BLADE* and keep it for future reference.

Before starting the machine, you or any other person who will be operating the Snowblower and the *X-PRO BLADE* must familiarize yourself with the safety recommendations and the operating instructions. Please read carefully and be sure to understand and follow all recommendations and procedures.

In this manual, the right and left sides are identified as shown on Figure 1.

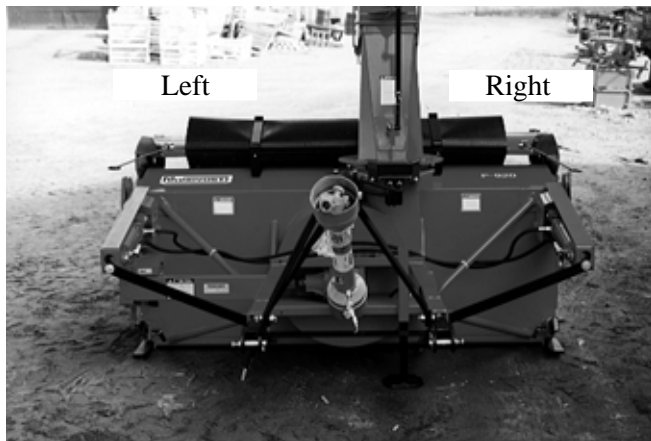


Figure 1

If you require additional information on your Snowblower, please contact your PRONOVOST Dealer.

**NOW** take a moment to enter the model, serial number and the date of purchase of your *X-PRO BLADE* in the space provided.

When ordering parts from your Dealer, please refer to these numbers for a fast and efficient service. Use only PRONOVOST replacement parts.

The model and serial numbers are on the name plate shown on Fig. 2.

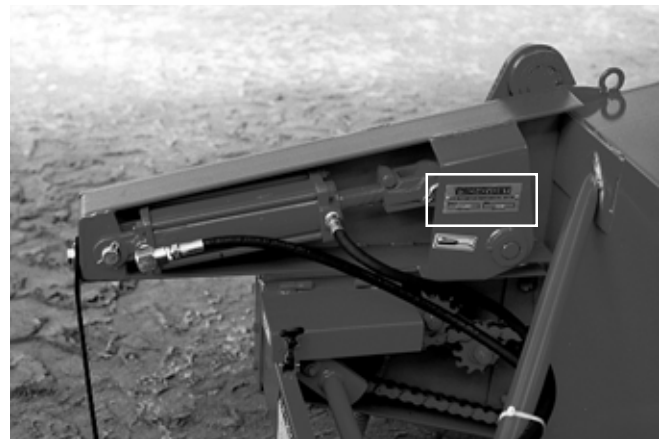


Figure 2

MODEL: \_\_\_\_\_ ✍

SERIAL NO: \_\_\_\_\_ ✍

DATE OF PURCHASE: \_\_\_\_\_ ✍

---

---

# SAFETY

---

## GENERAL SAFETY

**2** Note: To simplify the text, the term snowblower is used to designate a combination of snowblower and/or X-PRO BLADE.

### WHEN YOU SEE THIS SYMBOL



**ATTENTION!**

**BE ALERT  
YOUR SAFETY IS INVOLVED**

This symbol «SAFETY ALERT» is used in this manual and on the safety decals on the Snowblower. It warns you of the possibility of danger. Carefully read, understand and follow all safety recommendations before operating the Snowblower.

- 1) Careful operation is the best assurance against accidents. Carefully read this manual and follow all recommendations before operating your Snowblower. It is the owner's responsibility to make sure that anyone who will operate the Snowblower will read this manual before operating the equipment.
- 2) Familiarize yourself with all controls and always be ready to stop the Snowblower quickly in case of emergency.
- 3) Never let a child operate the Snowblower.
- 4) Do not modify the Snowblower. Any non authorized modification may affect the efficiency and/or safety of the equipment and will automatically void the warranty.
- 5) Never operate the Snowblower with defective parts or if damaged in any way. Have it repaired before operating.
- 6) Make sure all fasteners are in place and properly secured or tightened. Refer to torque chart on page 23.
- 7) Avoid wearing loose fitting clothing when working with the Snowblower. These could get entangled in moving parts of the equipment and cause accidents.
- 8) Prolonged exposure to noise may hamper hearing. Protect yourself by wearing adequate protection devices.
- 9) Hydraulic fluids under pressure can damage your skin. Do not use your hands to locate a leak.
- 10) Before the beginning of the snow season, inspect all areas where the Snowblower will be used and remove any object which may cause an accident and/or damage the equipment.
- 11) Never operate your Snowblower in poor visibility or without proper lighting conditions.

## SAFETY IN OPERATION

- 1) Be sure there are no obstructions around the equipment and that no one stands near the equipment when in operation.
- 2) Do not operate an engine in a confined or non ventilated area.
- 3) Do not perform any adjustments, cleaning, maintenance or repairs with the engine running. The engine must be stopped and the P.T.O. disengaged. Preferably remove the key from the ignition.
- 4) Wear adequate clothing when working in cold or windy conditions.
- 5) Adjust skid shoes for proper ground clearance of scraper blade, especially in rough terrain or soft ground conditions.
- 6) Before operating, make sure the P.T.O. is properly installed and secured.
- 7) Before starting-up the Snowblower, make sure the auger and drum areas are free of ice.
- 8) Put P.T.O. control in neutral position before starting engine.

---

---

## ***SAFETY (cont'd)***

---

- 9) Keep hands, feet and clothing away from moving parts of the Snowblower. Stay away from the discharge chute.
- 10) Before unplugging the chute, always disengage the P.T.O., stop the engine and relieve all hydraulic pressures.
- 11) Do not operate in excessive inclined conditions. Be careful when turning in slopes.
- 12) Never operate your Snowblower with missing guards or without protective devices in place.
- 13) Do not operate your Snowblower near buildings, windows or other vehicles without prior and proper adjustment of the chute deflector.
- 14) Never aim discharge chute towards people or animals. This may cause serious injuries.
- 15) Always reduce operating speed in slippery conditions.
- 16) Be careful when backing-up, make sure you have good visibility.
- 17) Always be on the lookout for objects which may enter the Snowblower.
- 18) If undue vibrations are felt, disengage the P.T.O., stop the motor and look for the cause of the vibration. Vibration is usually the indication of a problem.
- 19) At the end of the operation, disengage the P.T.O., lower the Snowblower, put transmission in neutral, apply parking brake, stop engine and remove the key from the ignition.

### ***SAFETY WITH MAINTENANCE***

- 1) Perform the Snowblower maintenance according to recommendations contained in this manual.

- 2) Stop engine and relieve all hydraulic pressures before doing inspection, maintenance or repairs.
- 3) Never perform any work under the Snowblower while it is supported only by the tractor's hydraulic system. It must be completely supported by wooden blocks or other safe means.

**2**

### ***SAFETY IN TRANSPORT***

- 1) On public roads, use proper safety lights and check local regulations.
- 2) Be alert while driving on the road. Never carry passengers.
- 3) Always disengage P.T.O. while moving from one area of work to another.
- 4) It is recommended to use both brake pedals simultaneously for better control.
- 5) The recommended road speed should be such as to maintain full control over steering and braking.
- 6) Be careful while backing up, make sure you have good visibility.

### ***SAFETY IN STORAGE***

- 1) Provide adequate supports to prevent any accidental overturning of the Snowblower.
- 2) Do not let children play in the area where the snowblower is stored.
- 3) Lower X-PRO blade on the ground.

---

---

# DECALS

---

---

## SAFETY DECALS

The safety decals are affixed wherever special safety precautions are indicated. Locate them on the machine and read them carefully. If a decal is damaged, lost or illegible, install a new one. The following photos indicate where each one must be installed.

**3**



Figure 3

Part no.: A103



Figure 4



Figure 5

Part no.: 130-02651



Figure 6

## MAINTENANCE DECALS

The maintenance decals indicate the points requiring lubrication. Refer to maintenance section for more details.



Figure 7

Part no.: A 106



# START-UP

The X-PRO blade has been developed to fit Pronovost group II and III snowblowers for three point hitch mount farm tractors. The lifting angle of the three point hitch varies from one model tractor to the other. Therefore in order to prevent premature wear of the skid shoes and to avoid the sides of the x-pro blade from scratching paved surfaces, **it is essential that the X-PRO blade be adjusted in the proper position before putting it into service.**

## X-PRO BLADE ADJUSTMENT

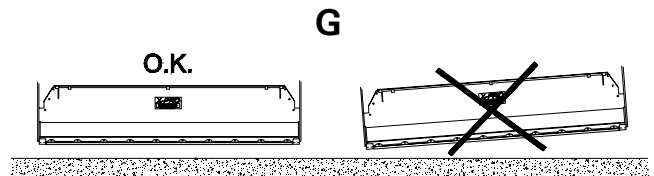
- 1) Adjust the superior attachment of your tractor's 3 point hitch (if it is adjustable) to the highest position. It procures a smaller slant when lifting (reducing the angle H).
- 2) Lift the snowblower with the 3 point hitch and lower the X-PRO blade to the maximum extension (blade cylinders **D** must be extended to the maximum). Then, lower the snowblower until it is supported entirely by the X-PRO blade.
- 3) Use two 1 1/2" wrenches to adjust the threaded cylinder adjustment **B** and get an approximate height of **10"** under the snowblower' scraper blade **A** (12" for models XP-740(TRC) and XP-800(TRC)).

Verify that the TIVAR or steel skid shoes are parallel to the ground or slightly raised on tractor side **F**.

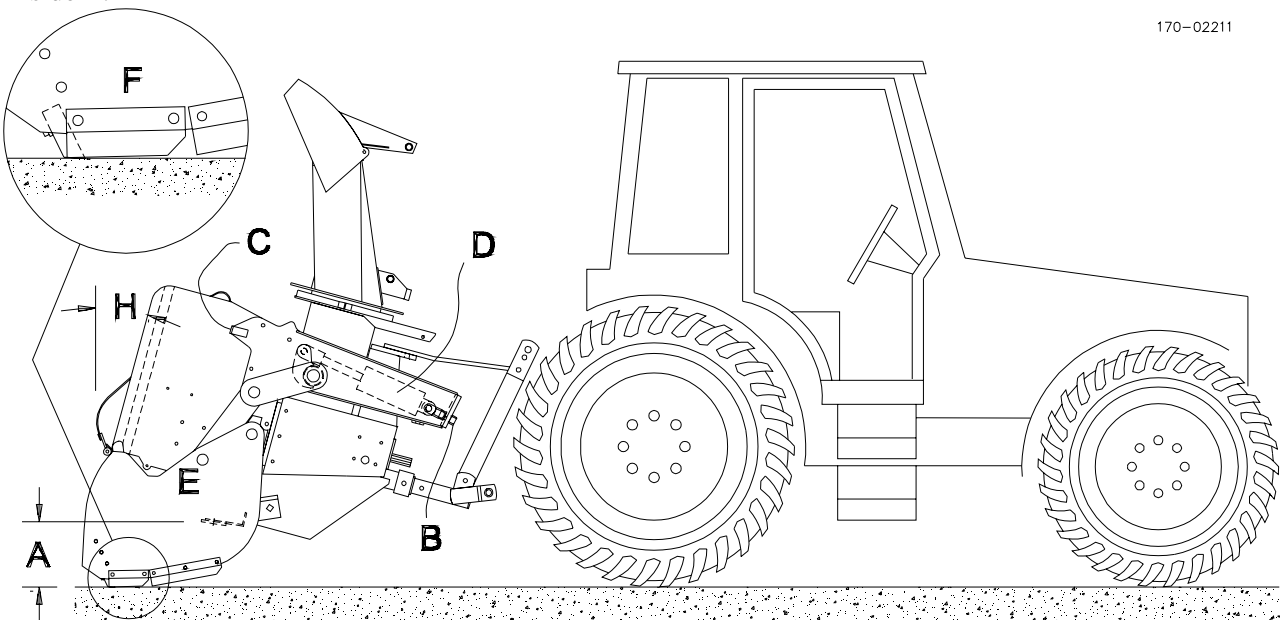
**WARNING:** After having adjusted the two cylinders, set the two threaded cylinder adjustments **B** in order to permit free cylinder movement **D**.

- 4) Lift the **snowblower** a couple inches and verify if the **blade** is parallel to the ground **G**. Rectify if needed by using the two threaded cylinders adjustments **B**. **WARNING:** You must make sure the **snowblower** unit is parallel to the ground. If this is not the case, check the 3 point hitch on the tractor or the level of the ground.
- 5) Lift up the snowblower and lift the X-PRO blade the highest possible. The sides **E** must rest on stoppers **C**. A relief valve has been installed to protect the mechanism when the blade rests on the stoppers. If the pressure on this valve is too low, the X-PRO blade can go up slightly if we lower the snowblower too rapidly on the blade. For an optimal adjustment, tighten the valve adjustment screw to the maximum and then unscrew a half-turn.

4



170-02211



---

---

## ***MAINTENANCE***

---

- 1) Wipe off all grease fittings with a clean cloth before adding grease in order to avoid injecting dirt and sand.
- 2) Repair or replace damaged grease fittings.
- 3) Lubricate all grease fittings every 10 hours of operation.
- 4) Check all nuts and bolts once a year. If necessary use torque chart on page 23.

---

---

## ***STORAGE***

---

- 1) Store the Snowblower in a cool, dry place.
- 2) Support the Snowblower with wooden blocks.
- 3) Clean your Snowblower.
- 4) Thoroughly inspect all parts of the Snowblower. Replace or repair worn or defective parts.
- 5) Touch-up or repaint if necessary.
- 6) Lubricate all points before storage.

**5**

**6**

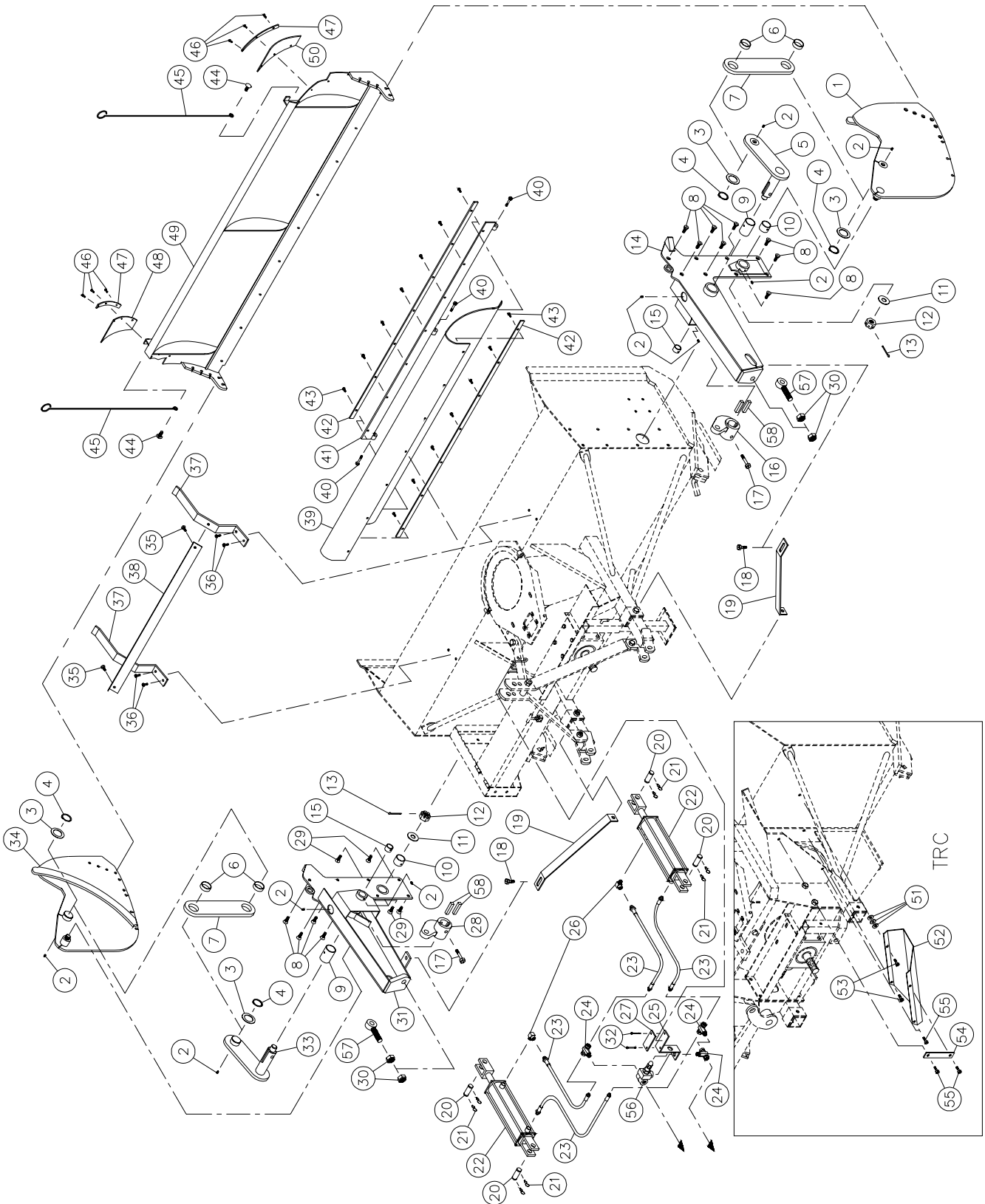
# SPECIFICATIONS

MODELS	Weight (lbs)	Standard steel scraper blade and skid shoes	Carbon steel scraper blade and skid shoes	TIVAR scraper blade and skid shoes
XP-740	694	LXST-74	LXHD-74	LXTV-74
XP-740TRC	705			
XP-800	716	LXST-80	LXHD-80	LXTV-80
XP-800TRC	729			
XP-860	750	LXST-86	LXHD-86	LXTV-86
XP-860TRC	763			
XP-860-92	762	LXST-92	LXHD-92	LXTV-92
XP-860-92TRC	775			
XP-862	770	LXST-86	LXHD-86	LXTV-86
XP-862TRC	783			
XP-920	819	LXST-92	LXHD-92	LXTV-92
XP-920TRC	835			
XP-920-98	831	LXST-98	LXHD-98	LXTV-98
XP-920-98TRC	847			
XP-992	880	LXST-92	LXHD-92	LXTV-92
XP-992TRC	904			
XP-980	886	LXST-98	LXHD-98	LXTV-98
XP-980TRC	910			
XP-1040	897	LXST-104	LXHD-104	LXTV-104
XP-1040TRC	921			

Design and specifications subject to change without notice.

**X-PRO XP-740 XP-800 XP-860 XP-860-92 XP-920 XP-920-98**

170-02014



**X-PRO XP-740 XP-800 XP-860 XP-860-92 XP-920 XP-920-98 (cont'd)**

REF.	PART #	DESCRIPTION	QTY					
			XP-740	XP-800	XP-860	XP-860-92	XP-920	XP-920-98
1	110-09423	Pivoting side (right side) .....	1	1	1	1	-	-
1	110-08653	Pivoting side (right side) .....	-	-	-	-	1	1
2	std.	Grease fitting 1/4"-28 right .....	10	10	10	10	10	10
3	8345	Spacer 2" d.i. x 3" d.e. x 14g thickness .....	4	4	4	4	4	4
4	8346	Retaining ring 2" .....	4	4	4	4	4	4
5	110-09393	Pivoting lever (right side) .....	1	1	1	1	-	-
5	110-09243	Pivoting lever (right side) .....	-	-	-	-	1	1
6	160-04421	Bushing 2" i.d. x 2 1/4" o.d. x 3/4" lg .....	4	4	4	4	4	4
7	130-10411	Transfer plate .....	2	2	2	2	-	-
7	130-09821	Transfer plate .....	-	-	-	-	2	2
8	319-38280	Plow bolt 7/16" NC x 1 1/4" lg + nut & lock washer .....	12	12	12	12	13	13
9	160-04371	Bushing 2" i.d. x 2 1/4" o.d. x 3 3/16" lg .....	2	2	2	2	-	-
9	160-06501	Bushing 2 1/2" i.d. x 2 3/4" o.d. x 3 3/16" lg .....	-	-	-	-	2	2
10	160-04401	Bushing 1 3/4" i.d. x 2" o.d. x 1 1/2" lg .....	2	2	2	2	2	2
11	376-50000	Flat washer 1" .....	2	2	2	2	2	2
12	357-50500	Castle nut 1"-14 x 9/16" thick .....	2	2	2	2	2	2
13	std.	Cotter pin 5/32" x 2" lg .....	2	2	2	2	2	2
14	120-01833	X-PRO mounting frame (right side) .....	1	1	1	1	-	-
14	120-01943	X-PRO mounting frame (right side) .....	-	-	-	-	1	1
15	160-04391	Bushing 1 1/4" o.d. x 1 1/2" i.d. x 1" lg .....	2	2	2	2	2	2
16	110-09382	Right cylinder lever .....	1	1	1	1	-	-
16	110-09234	Right cylinder lever .....	-	-	-	-	1	1
17	306-44460	Bolt 5/8" NC grade 12 x 4" lg + nylon locknut .....	2	2	2	2	-	-
17	306-44490	Bolt 5/8" NC grade 12 x 4 1/2" lg + nylon locknut .....	-	-	-	-	2	2
18	300-44310	Bolt 5/8" NC x 1 1/2" lg + nylon locknut & flat washer .....	2	2	2	2	2	2
19	140-07023	Support (regular and TRC models) .....	2	-	-	-	-	-
19	140-07043	Support (regular and TRC models) .....	-	2	-	-	-	-
19	140-06993	Support (regular and TRC models) .....	-	-	2	-	-	-
19	140-13401	Support (regular and TRC models) .....	-	-	-	2	-	-
19	140-07683	Support (regular model only) .....	-	-	-	-	2	-
19	140-07723	Support (TRC model only) .....	-	-	-	-	2	-
19	140-07713	Support (regular model only) .....	-	-	-	-	-	2
19	140-07733	Support (TRC model only) .....	-	-	-	-	-	2
20	51421	Clevis pin 1" dia .....	4	4	4	4	4	4
21	51472	Hitch pin clip .....	8	8	8	8	8	8
22	30 TR 06	Cylinder 3" x 6" stroke .....	2	2	2	2	-	-
22	30 TR 08	Cylinder 3" x 8" stroke .....	-	-	-	-	2	2
23	190-02372	Hose 3/8" x 49" lg + 2 fitting 6U-108 .....	4	4	4	-	-	-
23	190-02362	Hose 3/8" x 52" lg + 2 fitting 6U-108 .....	-	-	-	4	4	-
23	190-02322	Hose 3/8" x 55" lg + 2 fitting 6U-108 .....	-	-	-	-	-	4
24	15855x8	«T» 1/2" swivel .....	3	3	3	3	3	3
25	140-08882	Hoses support .....	1	1	1	1	1	1
26	C3409x8	Elbow 90 deg. 1/2" NPT M.F. ....	2	2	2	2	2	2
27	140-09401	Plate 1/4" x 2" x 4 5/16" .....	1	1	1	1	1	1
28	110-09381	Left cylinder lever .....	1	1	1	1	-	-
28	110-09233	Left cylinder lever .....	-	-	-	-	1	1



**X-PRO XP-740 XP-800 XP-860 XP-860-92 XP-920 XP-920-98 (cont'd)**

REF.	PART #	DESCRIPTION	QTY					
			XP-740	XP-800	XP-860	XP-860-92	XP-920	XP-920-98
29	327-38280	Hexagonal socket head set screw 7/16" NC x 1 1/4" lg + nylon locknut .....	4	4	4	4	3	3
30	338-51000	Nut 1"-14 .....	4	4	4	4	4	4
31	120-01834	X-PRO mounting frame (left side) .....	1	1	1	1	-	-
31	120-01944	X-PRO mounting frame (left side) .....	-	-	-	-	1	1
32	300-32325	Bolt 1/4" NC x 1 3/4" lg + nylon locknut .....	2	2	2	2	2	2
33	110-09394	Pivoting lever (left side) .....	1	1	1	1	-	-
33	110-09244	Pivoting lever (left side) .....	-	-	-	-	1	1
34	110-09424	Pivoting side (left) .....	1	1	1	1	-	-
34	110-08654	Pivoting side (left) .....	-	-	-	-	1	1
35	319-38280	Plow bolt 7/16" NC x 1 1/4" lg + nut & lock washer .....	2	2	2	2	2	2
36	300-36280	Bolt 3/8" NC x 1 1/4" lg + nylon locknut & flat washer .....	4	4	4	4	4	4
37	140-07221	Shroud stowage bracket .....	2	2	2	2	-	-
37	140-07691	Shroud stowage bracket .....	-	-	-	-	2	2
38	130-10701	Shroud stowage angle iron .....	1	1	1	1	-	-
38	130-11041	Shroud stowage angle iron .....	-	-	-	1	1	1
39	190-02462	Shroud 34" x 53" .....	1	-	-	-	-	-
39	190-02452	Shroud 34" x 59" .....	-	1	-	-	-	-
39	190-02442	Shroud 34" x 65" .....	-	-	1	-	-	-
39	190-05151	Shroud 34" x 71" .....	-	-	-	1	-	-
39	190-02212	Shroud 35" x 71" .....	-	-	-	-	1	-
39	190-02522	Shroud 35" x 77" .....	-	-	-	-	-	1
40	300-38400	Bolt 7/16" NC x 3" lg + nylon locknut .....	3	3	3	3	3	3
41	110-09561	Shroud hinge 53" lg .....	1	-	-	-	-	-
41	110-09551	Shroud hinge 59" lg .....	-	1	-	-	-	-
41	110-09541	Shroud hinge 65" lg .....	-	-	1	-	-	-
41	110-09531	Shroud hinge 71" lg .....	-	-	-	1	1	-
41	110-09191	Shroud hinge 77" lg .....	-	-	-	-	-	1
42	140-07321	Back plate for shroud hinge and stationary hold down 1/4" x 1" x 53" lg ..	2	-	-	-	-	-
42	140-07311	Back plate for shroud hinge and stationary hold down 1/4" x 1" x 59" lg ..	-	2	-	-	-	-
42	140-07301	Back plate for shroud hinge and stationary hold down 1/4" x 1" x 65" lg ..	-	-	2	-	-	-
42	140-07291	Back plate for shroud hinge and stationary hold down 1/4" x 1" x 71" lg ..	-	-	-	2	2	-
42	140-06431	Back plate for shroud hinge and stationary hold down 1/4" x 1" x 77" lg ..	-	-	-	-	-	2
43	300-34250	Bolt 5/16" NC x 1" lg + nylon locknut .....	12	12	14	16	16	16
44	321-40310	Carriage bolt 1/2" NC x 1 1/2" lg + nylon locknut .....	2	2	2	2	2	2
45	190-02193	Proximity indicator .....	2	2	2	2	2	2
46	300-32250	Bolt 1/4" NC x 1" lg + nylon locknut & flat washer .....	6	6	6	6	6	6
47	140-06161	Flap hold down 1/8" x 1" x 10" lg .....	2	2	2	2	2	2
48	190-02222	Left flap .....	1	1	1	1	1	1
49	110-09522	Plow 75 1/2" width .....	1	-	-	-	-	-
49	110-09512	Plow 81 1/2" width .....	-	1	-	-	-	-
49	110-09502	Plow 87 1/2" width .....	-	-	1	-	-	-

**8**

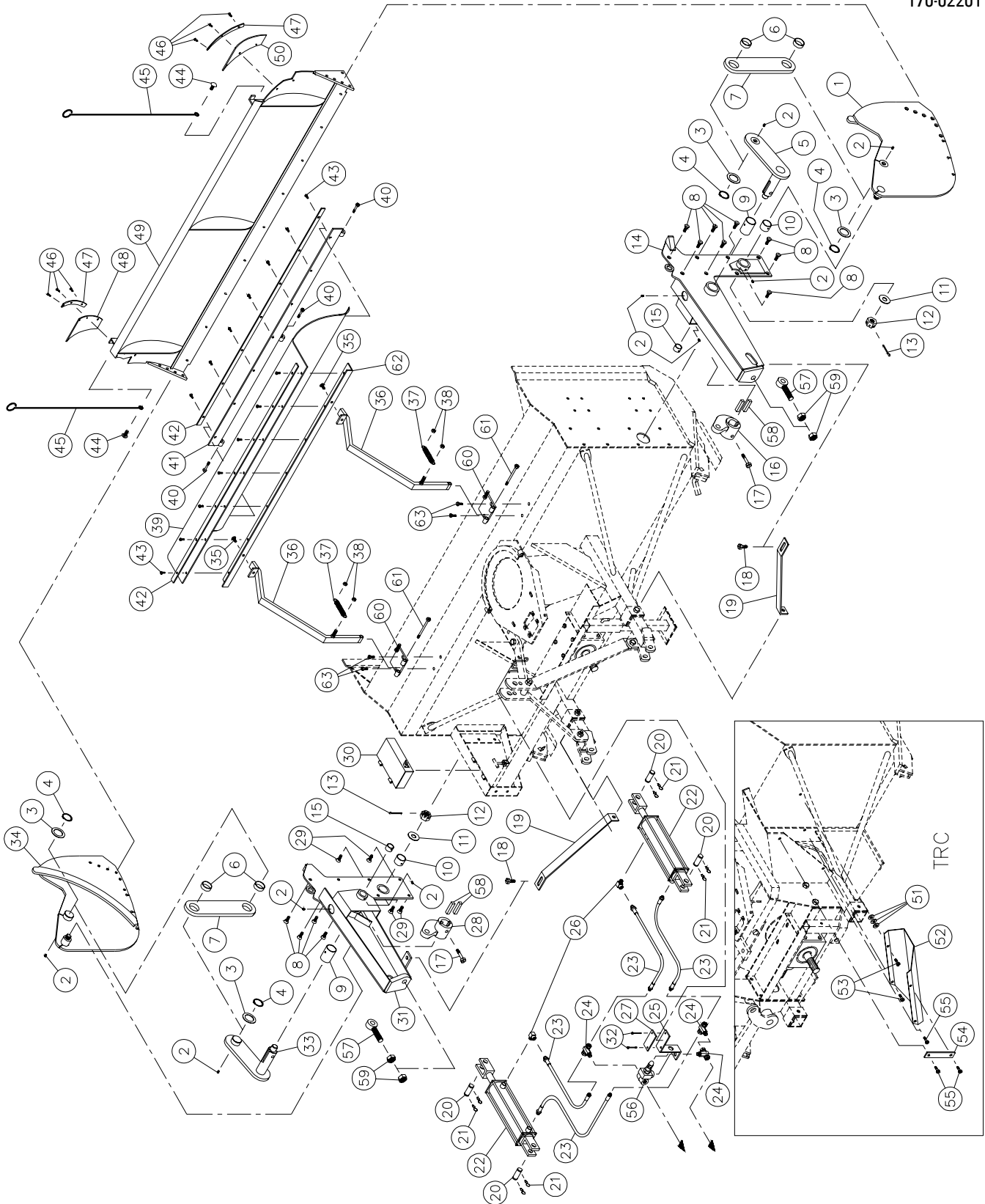
***X-PRO XP-740 XP-800 XP-860 XP-860-92 XP-920 XP-920-98 (cont'd)***

REF.	PART #	DESCRIPTION	QTY					
			XP-740	XP-800	XP-860	XP-860-92	XP-920	XP-920-98
49	110-09492	Plow 93 1/2" width .....	-	-	-	1	1	-
49	110-08362	Plow 99 1/2" width .....	-	-	-	-	-	1
50	190-02221	Right flap .....	1	1	1	1	1	1
51	376-38000	Flat washer 7/16" (TRC only) .....	4	4	4	4	4	4
52	130-10712	Deflector for side chute on TRC model only 12" width x 22 1/2" lg .....	1	-	-	-	-	-
52	130-10722	Deflector for side chute on TRC model only 12" width x 26 1/2" lg .....	-	1	1	1	-	-
52	130-11052	Deflector for side chute on TRC model only 12" width x 31" lg .....	-	-	-	-	1	1
53	300-38280	Bolt 7/16" NC x 1 1/4" lg + nylon locknut (TRC only) .....	2	2	2	2	2	2
54	140-07662	Deflector support 1/4" x 1 1/2" x 7 1/4" lg (TRC only) .....	-	-	-	-	1	1
55	300-38250	Bolt 7/16" NC x 1" lg + nylon locknut (TRC only) .....	3	3	3	3	3	3
56	8351	Relief valve 1/2" (JL-50) .....	1	1	1	1	1	1
57	110-12321	Threaded cylinder adjustment .....	2	2	2	2	2	2
58	140-06091	Key 5/8" x 5/8" x 3" lg .....	4	4	4	4	-	-
58	140-09161	Key 3/4" x 3/4" x 3" lg .....	-	-	-	-	4	4



# X-PRO XP-862 XP-992 XP-980 XP-1040

170-02201





# X-PRO XP-862 XP-992 XP-980 XP-1040 (cont'd)

REF.	PART #	DESCRIPTION	QTY			
			XP-862	XP-992	XP-980	XP-1040
1	110-09583	Pivoting side (right side) .....	1	-	-	-
1	110-10283	Pivoting side (right side) .....	-	1	-	-
1	110-09163	Pivoting side (right side) .....	-	-	1	1
2	std.	Grease fitting 1/4"-28 droit .....	10	10	10	10
3	8345	Spacer 2" i.d. x 3" o.d. x 14g thickness .....	4	4	4	4
4	8346	Retaining ring 2" .....	4	4	4	4
5	110-09393	Pivoting lever (right side) .....	1	-	-	-
5	110-09243	Pivoting lever (right side) .....	-	1	1	1
6	160-04421	Bushing 2" i.d. x 2 1/4" o.d. x 3/4" lg .....	4	4	4	4
7	130-10752	Transfer plate .....	2	-	-	-
7	130-11522	Transfer plate .....	-	2	-	-
7	130-08932	Transfer plate .....	-	-	2	2
8	319-38280	Plow bolt 7/16" NC x 1 1/4" lg + nut & lock washer .....	12	13	13	13
9	160-04371	Bushing 2" i.d. x 2 1/4" o.d. x 3 3/16" lg .....	2	-	-	-
9	160-06501	Bushing 2 1/2" i.d. x 2 3/4" d.o. x 3 3/16" lg .....	-	2	2	2
10	160-04401	Bushing 1 3/4" i.d. x 2" o.d. x 1 1/2" lg .....	2	2	2	2
11	376-50000	Flat washer 1" .....	2	2	2	2
12	357-50500	Castle nut 1"-14 x 9/16" thick .....	2	2	2	2
13	std.	Cotter pin 5/32" x 2" lg .....	2	2	2	2
14	120-01903	X-PRO mounting frame (right side) .....	1	-	-	-
14	120-02053	X-PRO mounting frame (right side) .....	-	1	-	-
14	120-01693	X-PRO mounting frame (right side) .....	-	-	1	1
15	160-04391	Bushing 1 1/4" i.d. x 1 1/2" o.d. x 1" lg .....	2	2	2	2
16	110-09382	Right cylinder lever .....	1	-	-	-
16	110-09234	Right cylinder lever .....	-	1	1	1
17	306-44460	Bolt 5/8" NC grade 12 x 4" lg + nylon locknut .....	2	-	-	-
17	306-44490	Bolt 5/8" NC grade 12 x 4 1/2" lg + nylon locknut .....	-	2	2	2
18	300-44310	Bolt 5/8" NC x 1 1/2" lg + nylon locknut & flat washer .....	2	2	2	2
19	140-06993	Suport (regular and TRC models) .....	2	-	-	-
19	140-07683	Suport (regular model only) .....	-	2	-	-
19	140-07723	Suport (TRC model only) .....	-	2	-	-
19	140-07053	Suport (regular model only) .....	-	-	2	-
19	140-06733	Suport (TRC model only) .....	-	-	2	-
19	140-07063	Suport (regular model only) .....	-	-	-	2
19	140-06803	Suport (TRC model only) .....	-	-	-	2
20	51421	Clevis pin 1" dia. ....	4	4	4	4
21	51472	Hitch pin clip .....	8	8	8	8
22	30 TR 06	Cylinder 3" x 6" stroke .....	2	-	-	-
22	30 TR 08	Cylinder 3" x 8" stroke .....	-	2	2	2
23	190-02372	Hose 3/8" x 49" lg + 2 fitting 6U-108. ....	4	-	-	-
23	190-02362	Hose 3/8" x 52" lg + 2 fitting 6U-108. ....	-	4	-	-
23	190-02322	Hose 3/8" x 55" lg + 2 fitting 6U-108. ....	-	-	4	-
23	190-02332	Hose 3/8" x 58" lg + 2 fitting 6U-108. ....	-	-	-	4
24	15855x8	«T» 1/2" swivel .....	3	3	3	3
25	140-08882	Hoses support .....	1	1	1	1
26	C3409x8	Elbow 90 deg. 1/2" NPT M.F. ....	2	2	2	2



# X-PRO XP-862 XP-992 XP-980 XP-1040 (cont'd)

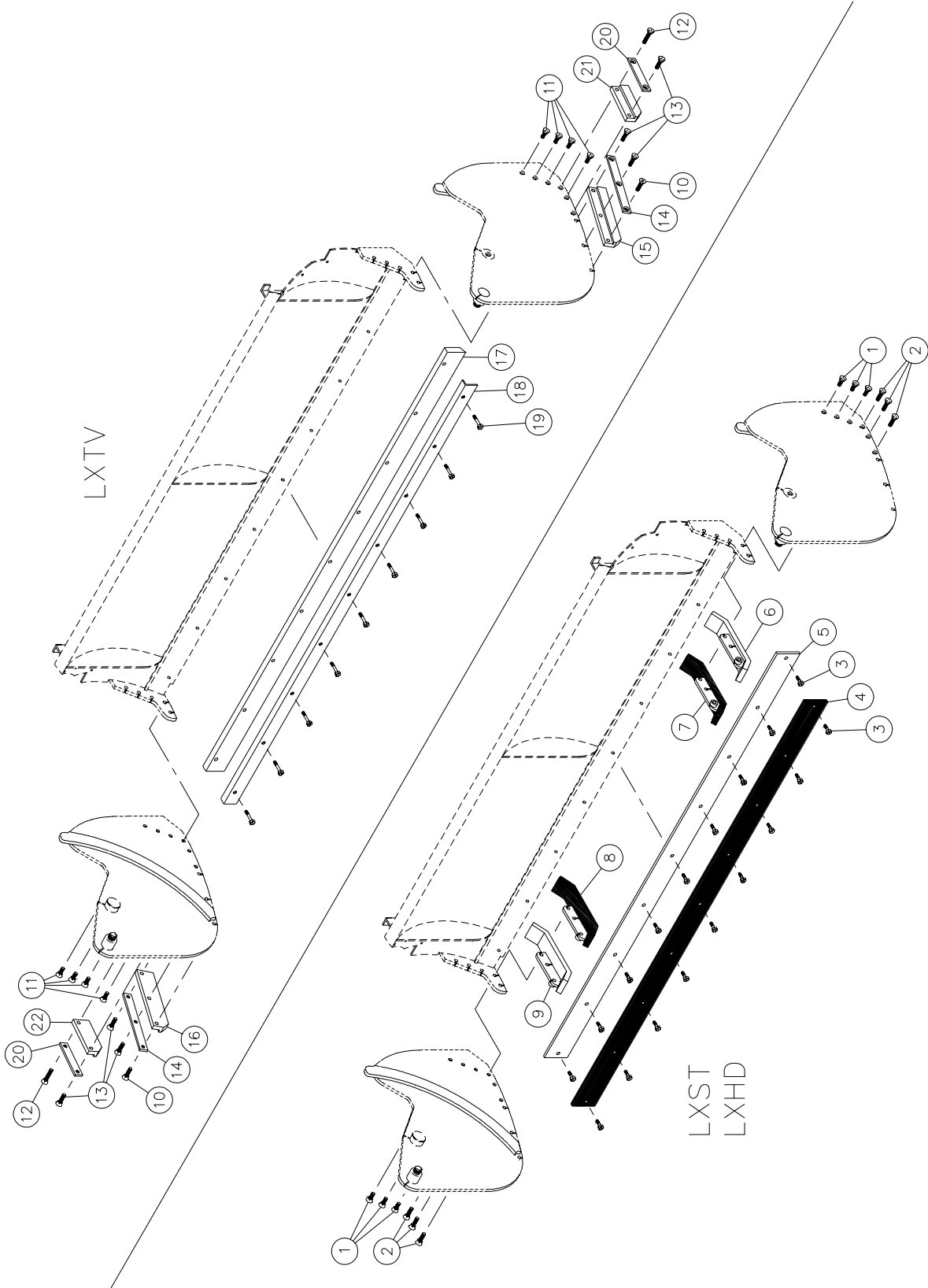
REF.	PART #	DESCRIPTION	QTY			
			XP-862	XP-992	XP-980	XP-1040
27	140-09401	Plate 1/4" x 2" x 4 5/16" .....	1	1	1	1
28	110-09381	Left cylinder lever .....	1	-	-	-
28	110-09233	Left cylinder lever .....	-	1	1	1
29	327-38280	Hexagonal socket head set screw 7/16" NC x 1 1/4" lg + nylon locknut .....	4	3	3	3
30	110-10141	Chain guard cover .....	1	-	-	-
30	110-10111	Chain guard cover .....	-	1	1	1
31	120-01904	X-PRO mounting frame (left side) .....	1	-	-	-
31	120-02054	X-PRO mounting frame (left side) .....	-	1	-	-
31	120-01694	X-PRO mounting frame (left side) .....	-	-	1	1
32	300-32325	Bolt 1/4" NC x 1 3/4" lg + nylon locknut .....	2	2	2	2
33	110-09394	Pivoting lever (left side) .....	1	-	-	-
33	110-09244	Pivoting lever (left side) .....	-	1	1	1
34	110-09584	Pivoting side (left) .....	1	-	-	-
34	110-10284	Pivoting side (left) .....	-	1	-	-
34	110-09164	Pivoting side (left) .....	-	-	1	1
35	300-38280	Bolt 7/16" NC x 1 1/4" lg + nylon locknut .....	2	2	2	2
36	110-09601	Hinged shroud storage bracket .....	2	-	-	-
36	110-10301	Hinged shroud storage bracket .....	-	2	-	-
36	110-08811	Hinged shroud storage bracket .....	-	-	2	2
37	190-02351	Extension spring 3/4" o.d. x 4 1/2" lg. ....	2	2	2	2
38	346-40000	Nylon locknut 1/2" NC. ....	4	4	4	4
39	190-02472	Shroud 29" x 65" .....	1	-	-	-
39	190-02602	Shroud 31 1/2" x 71" .....	-	1	-	-
39	190-02242	Shroud 33" x 77" .....	-	-	1	1
40	300-38400	Bolt 7/16" NC x 3" lg + nylon locknut .....	3	3	3	3
41	110-09541	Shroud hinge 65" lg .....	1	-	-	-
41	110-09531	Shroud hinge 71" lg .....	-	1	-	-
41	110-09191	Shroud hinge 77" lg .....	-	-	1	1
42	140-07301	Back plate for shroud hinge and stationary hold down 1/4" x 1" x 65" lg .....	2	-	-	-
42	140-07291	Back plate for shroud hinge and stationary hold down 1/4" x 1" x 71" lg .....	-	2	-	-
42	140-06431	Back plate for shroud hinge and stationary hold down 1/4" x 1" x 77" lg .....	-	-	2	2
43	300-34250	Bolt 5/16" NC x 1" lg + nylon locknut .....	14	16	16	16
44	300-40310	Carriage bolt 1/2" NC x 1 1/2" lg + nylon locknut .....	2	2	2	2
45	190-02193	Proximity indicator .....	2	2	2	2
46	300-32250	Bolt 1/4" NC x 1" lg + nylon locknut & flat washer .....	6	6	6	6
47	140-06161	Flap hold down 1/8" x 1" x 10" lg .....	2	2	2	2
48	190-02222	Left flap .....	1	1	1	1
49	110-09502	Plow 87 1/2" width .....	1	-	-	-
49	110-09492	Plow 93 1/2" width .....	-	1	-	-
49	110-08362	Plow 99 1/2" width .....	-	-	1	-
49	110-09332	Plow 105 1/2" width .....	-	-	-	1
50	190-02221	Right flap .....	1	1	1	1
51	376-38000	Flat washer 7/16" (TRC only) .....	4	4	4	4
52	130-10722	Deflector for side chute on TRC model only 12" width x 26 1/2" lg .....	1	-	-	-
52	130-11551	Deflector for side chute on TRC model only 15 3/4" width x 30 1/4" lg .....	-	1	-	-
52	130-10281	Deflector for side chute on TRC model only 15 3/4" width x 36 1/4" lg .....	-	-	1	1

## ***X-PRO XP-862 XP-992 XP-980 XP-1040 (cont'd)***

REF.	PART #	DESCRIPTION	QTY			
			XP-862	XP-992	XP-980	XP-1040
53	300-38280	Bolt 7/16" NC x 1 1/4" lg + nylon locknut (TRC only) .....	2	2	2	2
54	140-08022	Deflector support 1/4" x 1 1/2" x 5" lg (TRC only) .....	-	1	-	-
54	140-06782	Deflector support 1/4" x 1 1/2" x 8 3/4" lg (TRC only) .....	-	-	1	1
55	300-38250	Bolt 7/16" NC x 1" lg + nylon locknut (TRC only) .....	3	3	3	3
56	8351	Relief valve 1/2" (JL-50) .....	1	1	1	1
57	110-12321	Threaded cylinder adjustment .....	2	2	2	2
58	140-06091	Key 5/8" x 5/8" x 3" lg .....	4	-	-	-
58	140-09161	Key 3/4" x 3/4" x 3" lg .....	-	4	4	4
59	338-51000	Nut 1"-14 .....	4	4	4	4
60	110-08621	Hinge for shroud storage bracket .....	2	2	2	2
61	300-40550	Bolt 1/2" NC x 5 1/2" lg + nylon locknut .....	2	2	2	2
62	130-10811	Shroud storage angle iron 1 1/2" x 2 1/4" x 65" lg .....	1	-	-	-
62	130-11511	Shroud storage angle iron 1 1/2" x 2 1/4" x 71" lg .....	-	1	-	-
62	130-10201	Shroud storage angle iron 1 1/2" x 2 1/4" x 77" lg .....	-	-	1	1
63	300-40280	Bolt 1/2" NC x 1 1/4" lg + nylon locknut .....	4	-	-	-
63	300-40250	Bolt 1/2" NC x 1" lg + lock washer .....	-	4	4	4

# SCRAPER BLADE & SKID SHOES

170-02001



# SCRAPER BLADE AND SKID SHOES

## SCRAPER BLADE & SKID SHOES LXST (Standard steel)

RÉF.	PART #	DESCRIPTION	LXST	QTY					
				74	80	86	92	98	104
1	319-38310	Plow bolt 7/16" NC x 1 1/2" lg + nut & lock washer .....		6	6	6	6	6	6
2	319-38340	Plow bolt 7/16" NC x 2" lg + nut & lock washer .....		6	6	6	6	6	6
3	300-38310	Bolt 7/16" NC x 1 1/2" lg + nylon locknut .....		7	8	9	9	10	10
5	140-07201	Standard steel scraper blade 3/8" x 4" x 69 3/4" lg .....		1	-	-	-	-	-
5	140-07191	Standard steel scraper blade 3/8" x 4" x 75 3/4" lg .....		-	1	-	-	-	-
5	140-07181	Standard steel scraper blade 3/8" x 4" x 81 3/4" lg .....		-	-	1	-	-	-
5	140-07171	Standard steel scraper blade 3/8" x 4" x 87 3/4" lg .....		-	-	-	1	-	-
5	140-06341	Standard steel scraper blade 3/8" x 4" x 93 3/4" lg .....		-	-	-	-	1	-
5	140-06831	Standard steel scraper blade 3/8" x 4" x 99 3/4" lg .....		-	-	-	-	-	1
6	110-09174	Standard steel skid shoe (right) .....		1	1	1	1	1	1
9	110-09173	Standard steel skid shoe (left) .....		1	1	1	1	1	1

## SCRAPER BLADE & SKID SHOES LXHD (CHT360 Steel)

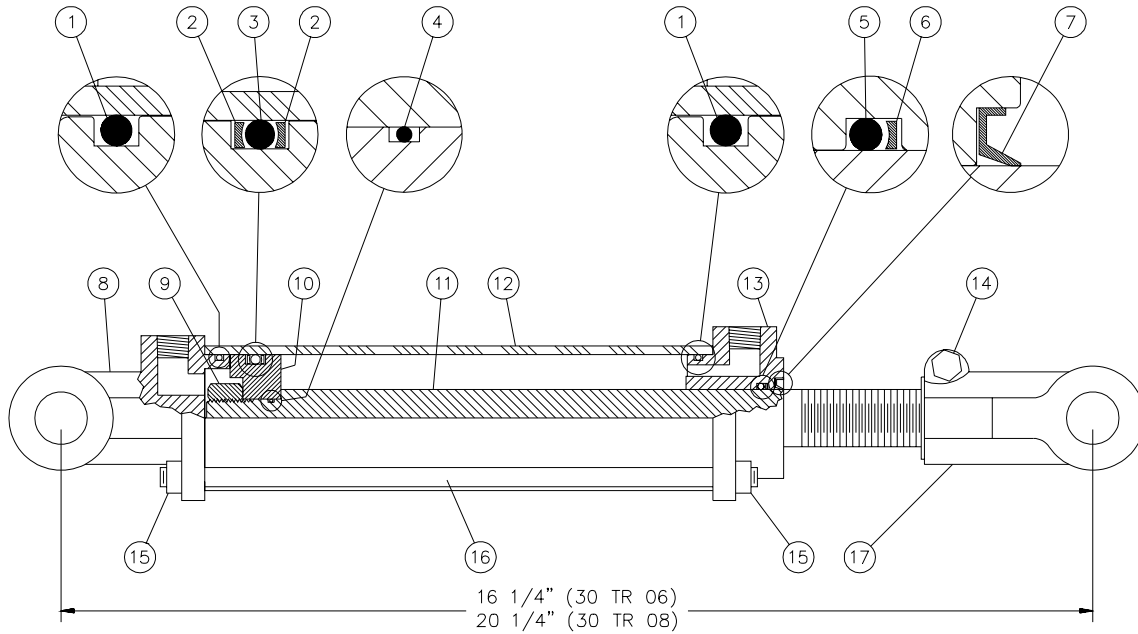
REF.	PART #	DESCRIPTION	LXHD	QTY					
				74	80	86	92	98	104
1	319-38310	Plow bolt 7/16" NC x 1 1/2" lg + nut & lock washer .....		6	6	6	6	6	6
2	319-38340	Plow bolt 7/16" NC x 2" lg + nylon locknut .....		6	6	6	6	6	6
3	319-38310	Plow bolt 7/16" NC x 1 1/2" lg + nut & lock washer .....		7	8	9	9	10	10
4	130-10691	CHT360 steel scraper blade 1/2" x 4" x 69 3/4" lg .....		1	-	-	-	-	-
4	130-10681	CHT360 steel scraper blade 1/2" x 4" x 75 3/4" lg .....		-	1	-	-	-	-
4	130-10671	CHT360 steel scraper blade 1/2" x 4" x 81 3/4" lg .....		-	-	1	-	-	-
4	130-10661	CHT360 steel scraper blade 1/2" x 4" x 87 3/4" lg .....		-	-	-	1	-	-
4	130-10171	CHT360 steel scraper blade 1/2" x 4" x 93 3/4" lg .....		-	-	-	-	1	-
4	130-10321	CHT360 steel scraper blade 1/2" x 4" x 99 3/4" lg .....		-	-	-	-	-	1
7	110-09184	CHT360 steel skid shoe (right) .....		1	1	1	1	1	1
8	110-09183	CHT360 steel skid shoe (left) .....		1	1	1	1	1	1

## SCRAPER BLADE & SKID SHOES LXTV (TIVAR)

REF.	PART #	DESCRIPTION	LXTV	QTY					
				74	80	86	92	98	104
10	327-38325	Hexagonal socket head set screw 7/16" NC x 1 3/4" lg + nut (thin) .....		2	2	2	2	2	2
11	319-38310	Plow bolt 7/16" NC x 1 1/2" lg + nut & lock washer .....		8	8	8	8	8	8
12	319-38370	Plow bolt 7/16" NC x 2 1/2" lg + nut & lock washer .....		2	2	2	2	2	2
13	319-38340	Plow bolt 7/16" NC x 2" lg + nut & lock washer .....		6	6	6	6	6	6
14	140-08831	Skid shoe holder TIVAR 5/16" x 1 1/4" x 11 5/8" lg .....		2	2	2	2	2	2
15	190-03352	TIVAR skid shoe 11 5/8" lg (right) .....		1	1	1	1	1	1
16	190-03351	TIVAR skid shoe 11 5/8" lg (left) .....		1	1	1	1	1	1
17	190-02432	TIVAR scraper blade 1" x 3 1/2" x 75" lg .....		1	-	-	-	-	-
17	190-02422	TIVAR scraper blade 1" x 3 1/2" x 81" lg .....		-	1	-	-	-	-
17	190-02412	TIVAR scraper blade 1" x 3 1/2" x 87" lg .....		-	-	1	-	-	-
17	190-02402	TIVAR scraper blade 1" x 3 1/2" x 93" lg .....		-	-	-	1	-	-
17	190-02312	TIVAR scraper blade 1" x 3 1/2" x 99" lg .....		-	-	-	-	1	-
17	190-02342	TIVAR scraper blade 1" x 3 1/2" x 105" lg .....		-	-	-	-	-	1
18	130-10652	Holder 72 3/4" lg for TIVAR scraper blade .....		1	-	-	-	-	-
18	130-10642	Holder 78 3/4" lg for TIVAR scraper blade .....		-	1	-	-	-	-
18	130-10632	Holder 84 3/4" lg for TIVAR scraper blade .....		-	-	1	-	-	-
18	130-10622	Holder 90 3/4" lg for TIVAR scraper blade .....		-	-	-	1	-	-
18	130-10192	Holder 96 3/4" lg for TIVAR scraper blade .....		-	-	-	-	1	-
18	130-10332	Holder 102 3/4" lg for TIVAR scraper blade .....		-	-	-	-	-	1
19	300-38355	Bolt 7/16" NC x 2 1/4" lg + nylon locknut .....		7	8	9	9	10	10
20	140-08841	Skid shoe holder TIVAR 5/16" x 1 1/4" x 6 7/16" lg .....		2	2	2	2	2	2
21	190-03362	TIVAR skid shoe 6 7/16" lg (right) .....		1	1	1	1	1	1
22	190-03361	TIVAR skid shoe 6 7/16" lg (left) .....		1	1	1	1	1	1

# CYLINDERS 30TR06 & 30TR08

170-01641










REF.	PART #	DESCRIPTION	QTY	
			30TR06	30TR08
1	voir RK30TR	O-ring .....	2	2
2	voir RK30TR	Back-up .....	2	2
3	voir RK30TR	O-ring .....	1	1
4	voir RK30TR	O-ring .....	1	1
5	voir RK30TR	O-ring .....	1	1
6	voir RK30TR	Back-up .....	1	1
7	voir RK30TR	Wiper .....	1	1
8	492810	Yoke for tube 3" .....	1	1
9	129110	Nut 3/4" NF .....	1	1
10	492520	Piston 3" diameter .....	1	1
11	492868	Piston rod 1 1/4" diameter .....	1	-
11	492864	Tige du piston 1 1/4" diameter .....	-	1
12	491736	Cylinder body 3" diameter .....	1	-
12	491738	Cylinder body 3" diameter .....	-	1
13	492812	Head for 3" tube .....	1	1
14	300-36355	Bolt 3/8" NC x 2 1/4" lg + nut .....	1	1
15	336-36000	Nut 3/8" NC .....	8	8
16	492276	Threaded rod 3/8" NC .....	4	-
16	492278	Threaded rod 3/8" NC .....	-	4
17	492652	Yoke for 1 1/4" yoke .....	1	1
NI*	8183	Pin 1" diameter + cotter pin .....	2	2
NI*	RK30TR	Repair kit for cylinder 3" (includes #1, 2, 3, 4, 5, 6 & 7) .....	1	1

\*NI = Not illustrated




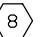
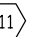
8

# TORQUE CHART

## TORQUE SPECIFICATION TABLE

Thread UNC and UNF		Grade 2 				Grade 5   				Grade 8*   			
Bolt size		Torque				Torque				Torque			
Inches	mm	Pound feet min.	max.	Newton meters min.	max.	Pound feet min.	max.	Newton meters min.	max.	Pound feet min.	max.	Newton meters min.	max.
1/4	6.35	5	6	6.8	8.13	9	11	12.2	14.9	12	15	16.3	30.3
5/16	7.94	10	12	13.6	16.3	17	20.5	23.1	27.8	24	29	32.5	39.3
3/8	9.53	20	23	27.1	31.2	35	42	47.5	57.0	45	54	61.0	73.2
7/16	11.11	30	35	40.7	47.4	54	64	73.2	86.8	70	84	94.9	113.9
1/2	12.70	45	52	61.0	70.5	80	96	108.5	130.2	110	132	149.2	179.0
9/16	14.29	65	75	88.1	101.6	110	132	149.2	179.0	160	192	217.0	260.4
5/8	15.88	95	105	128.7	142.3	150	180	203.4	244.1	220	264	298.3	358.0
3/4	19.05	150	185	203.3	250.7	270	324	366.1	439.3	380	456	515.3	618.3
7/8	22.23	160	200	216.8	271.0	400	480	542.4	650.9	600	720	813.6	976.3
1	25.40	250	300	338.8	406.5	580	696	786.5	943.8	900	1080	1220.4	1464.5
1 1/8	25.58	-	-	-	-	800	880	1084.8	1193.3	1280	1440	1735.7	1952.6
1 1/4	31.75	-	-	-	-	1120	1240	1518.7	1681.4	1820	2000	2467.9	2712.0
1 3/8	34.93	-	-	-	-	1460	1680	1979.8	2278.1	2380	2720	3227.3	3688.3
1 1/2	38.10	-	-	-	-	1940	2200	2630.6	2983.2	3160	3560	4285.0	4827.4

\* Thick nuts must be used with grade 8 bolts.

Size of screw	Thread	Pitch (mm)	Grade 4T  				Grade 7T 				Grade 8T  			
			Torque				Torque				Torque			
			Pound feet min.	max.	Newton meters min.	max.	Pound feet min.	max.	Newton meters min.	max.	Pound feet min.	max.	Newton meters min.	max.
M6	UNC	1.00	3.6	5.8	4.9	7.9	5.8	9.4	7.9	12.7	7.2	10	9.8	13.6
M8	UNC	1.25	7.2	14	9.8	19	17	22	23	29.8	20	26	27.1	35.2
M10	UNC	1.5	20	25	27.1	33.9	34	40	46.1	54.2	38	46	51.5	62.3
M12	UNC	1.75	28	34	37.9	46.1	51	59	69.1	79.9	57	66	77.2	89.4
M14	UNC	2.0	49	56	66.4	75.9	81	93	109.8	126	96	109	130.1	147.7
M16	UNC	2.0	67	77	90.8	104.3	116	130	157.2	176.2	129	145	174.8	196.5
M18	UNC	2.0	88	100	119.2	136	150	168	203.3	227.6	175	194	237.1	262.9
M20	UNC	2.5	108	130	146.3	176.2	186	205	252	277.8	213	249	288.6	337.4
M8	UNF	1.0	12	17	16.3	23	19	27	25.7	36.6	22	31	29.8	42
M10	UNF	1.25	20	29	27.1	39.3	35	47	47.4	63.7	40	52	54.2	70.5
M12	UNF	1.25	31	41	42	55.6	56	68	75.9	92.1	62	75	84	101.6
M14	UNF	1.5	52	64	70.5	86.7	90	106	122	143.6	107	124	145	168
M16	UNF	1.5	69	83	93.5	112.5	120	138	162.6	187	140	158	189.7	214.1
M18	UNF	1.5	100	117	136	158.5	177	199	239.8	269.6	202	231	273.7	313
M20	UNF	1.5	132	150	178.9	203.3	206	242	279.1	327.9	246	289	333.3	391.6

Use the above torques when special torque is not given.

NOTE: These values apply to fasteners as received from supplier, dry, or when lubricated with normal engine oil. They do not apply if extreme pressure lubricants are used.

---

---

## **WARRANTY**

---

PRONOVOST warrants this product to the initial purchaser for the period of one year from the date of purchase against defects in materials and workmanship.

We will replace or repair defective parts free of charge if they are returned to our plant in St-Tite, Quebec, Canada.

Transportation charges are the responsibility of the customer. This warranty is not transferable.

Hydraulic cylinders and motors are covered by the manufacturer of these items.

All PRONOVOST spare parts purchased are covered by a three (3) month warranty.

This warranty becomes void and nul if the equipment is modified, breaks down as the result of an accident, is not operated according to manufacturer's recommendations, damaged by negligence or if maintenance has not been carried out as specified.

Our obligation is limited to the replacement or repair of the defective part. PRONOVOST accepts no responsibility for direct or indirect consequential damages of any kind.









Ce manuel est aussi disponible en français.  
Veuillez téléphoner.



**INNOVATION - EXCELLENCE**

**LES MACHINERIES PRONOVOST INC.**  
260, route 159,  
Saint-Tite, Quebec, Canada, GOX 3H0  
Tel.: (418) 365-7551, Fax: (418) 365-7954  
[www.pronovost.qc.ca](http://www.pronovost.qc.ca)