



**OPERATOR'S / PARTS
MANUAL**



Snowblowers

Models

P-920 & P-920TRC

P-922 & P-922TRC

P-920-98 & P-920TRC-98

P-98134 & P-98134TRC



Copyright © Les Machineries Pronovost Inc., 2011

All rights reserved.
Printed in Canada.

TABLE OF CONTENTS

Section	Item	Page
1	Introduction	5
2	Safety	6
	General Safety	6
	Safety in Operation	6
	Safety with Maintenance	7
	Safety in Transport	7
	Safety in Storage	7
3	Decals	8
	Safety Decals	8
	Maintenance Decals	12
4	Assembly	13
	General assembly	13
5	Start-up	14
	Basic Start-up Procedures	14
6	Maintenance	15
	General Maintenance	15
7	Storage	16
8	Trouble Shooting	17
9	Specifications	19
10	Parts List	20
	Snowblower P-920 P-920-98	20
	Snowblower P-920TRC P-920TRC-98	23
	Snowblower P-922	27
	Snowblower P-922TRC	30
	Snowblower P-98134	33
	Snowblower P-98134TRC	36
	Chute CST-7486	39
	Semi-industrial Chute PSIG-7486	41
	Industrial Chute PCG-7486	43
	Chute PCT-7486-HDB	45
	Options	37
	Upper Auger VS2	50
	P.T.O. Shaft 9225-EG 9225-1 9569	51
	P.T.O. Shaft 9475 9475-1 9475-2	52
	Gear box 9307	53
	Reducer 9769	54
	Cylinder 25TR08	55
	Cylinder 15PC32	56
	Hydraulic Motor MLH-250 & MLH-315	57
11	Torque Chart	58
12	Warranty	59

INTRODUCTION

CONGRATULATIONS!

Thank you for choosing PRONOVOST. We are confident this equipment will meet your requirements in terms of quality, performance and reliability.

This manual was prepared to assist you in the safe operation of your new Snowblower. It contains important information which will help you achieve excellent returns with your Snowblower for years to come.

Please read this manual completely before operating your Snowblower and keep it for future reference.

Before starting the machine, you or any other person who will be operating the Snowblower must familiarize yourself with the safety recommendations and the operating instructions. Please read carefully and be sure to understand and follow all recommendations and procedures.

In this manual, the right and left sides are identified as shown on Figure 1.

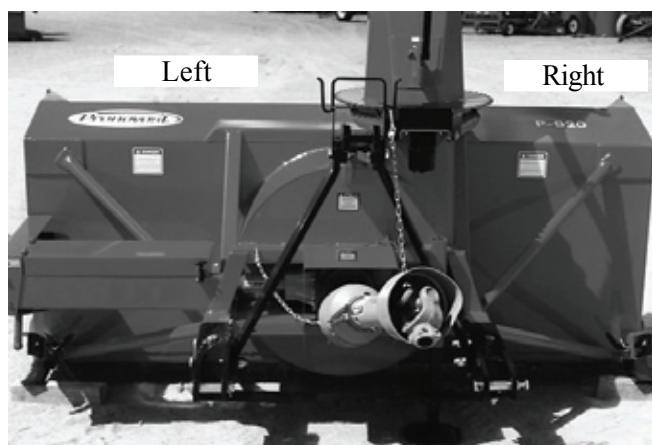


Figure 1

If you require additional information on your Snowblower, please contact your PRONOVOST Dealer.

NOW take a moment to enter the model, serial number and the date of purchase of your Snowblower in the space provided.

When ordering parts from your Dealer, please refer to these numbers for a fast and efficient service. Use PRONOVOST parts for replacement.

The model and serial numbers are on the name plate shown on Fig. 2.



Figure 2

MODEL: _____ ✍

SERIAL NO: _____ ✍

DATE OF PURCHASE: _____ ✍

SAFETY

GENERAL SAFETY

2

WHEN YOU SEE THIS SYMBOL



ATTENTION!

**BE ALERT
YOUR SAFETY IS INVOLVED**

This symbol «**SAFETY ALERT**» is used in this manual and on the safety decals on the Snowblower. It warns you of the possibility of danger. Carefully read, understand and follow all safety recommendations before operating the Snowblower.

- 1) Careful operation is the best assurance against accidents. Carefully read this manual and follow all recommendations before operating your Snowblower. It is the owner's responsibility to make sure that anyone who will operate the Snowblower will read this manual before operating the equipment.
- 2) Familiarize yourself with all controls and always be ready to stop the Snowblower quickly in case of emergency.
- 3) Never let a child operate the Snowblower.
- 4) Do not modify the Snowblower. Any non authorized modification may affect the efficiency and/or safety of the equipment and will automatically void the warranty.
- 5) Never operate the Snowblower with defective parts or if damaged in any way. Have it repaired before operating.
- 6) Make sure all fasteners are in place and properly secured or tightened. Refer to torque chart on page 58.
- 7) Avoid wearing loose fitting clothing when working with the Snowblower. These could get entangled in moving parts of the equipment and cause accidents.
- 8) Prolonged exposure to noise may hamper hearing. Protect yourself by wearing adequate protection devices.
- 9) Hydraulic fluids under pressure can damage your skin. Do not use your hands to locate a leak.
- 10) Before the beginning of the snow season, inspect all areas where the Snowblower will be used and remove any object which may cause an accident and/or damage the equipment.
- 11) Never operate your Snowblower in poor visibility or without proper lighting conditions.

SAFETY IN OPERATION

- 1) Be sure there are no obstructions around the equipment and that no one stands near the equipment when in operation.
- 2) Do not operate an engine in a confined or non ventilated area.
- 3) Do not perform any adjustments, cleaning, maintenance or repairs with the engine running. The engine must be stopped and the P.T.O. disengaged. Preferably remove the key from the ignition.
- 4) Wear adequate clothing when working in cold or windy conditions.
- 5) Adjust skid shoes for proper ground clearance of scraper blade, especially in rough terrain or soft ground conditions.
- 6) Before operating, make sure the P.T.O. is properly installed and secured.
- 7) Before starting-up the Snowblower, make sure the auger and drum areas are free of ice.
- 8) Put P.T.O. control in neutral position before starting engine.
- 9) Keep hands, feet and clothing away from moving parts of the Snowblower. Stay away from the discharge chute.

SAFETY (cont'd)

- 10) Before unplugging the chute, always disengage the P.T.O., stop the engine and relieve all hydraulic pressures.
- 11) Do not operate in excessive inclined conditions. Be careful when turning in slopes.
- 12) Never operate your Snowblower with missing guards or without protective devices in place.
- 13) Do not operate your Snowblower near buildings, windows or other vehicles without prior and proper adjustment of the chute deflector.
- 14) Never aim discharge chute towards people or animals. This may cause serious injuries.
- 15) Always reduce operating speed in slippery conditions.
- 16) Be careful when backing-up, make sure you have good visibility.
- 17) Always be on the lookout for objects which may enter the Snowblower.
- 18) If undue vibrations are felt, disengage the P.T.O., stop the motor and look for the cause of the vibration. Vibration is usually the indication of a problem.
- 19) At the end of the operation, disengage the P.T.O., lower the Snowblower, put transmission in neutral, apply parking brake, stop engine and remove the key from the ignition.

SAFETY WITH MAINTENANCE

- 1) Perform the Snowblower maintenance according to recommendations contained in this manual.

- 2) Stop engine and relieve all hydraulic pressures before doing inspection, maintenance or repairs.
- 3) Never perform any work under the Snowblower while it is supported only by the tractor's hydraulic system. It must be completely supported by wooden blocks or other safe means.

SAFETY IN TRANSPORT

- 1) On public roads, use proper safety lights and check local regulations.
- 2) Be alert while driving on the road. Never carry passengers.
- 3) Always disengage P.T.O. while moving from one area of work to another.
- 4) It is recommended to use both brake pedals simultaneously for better control.
- 5) The recommended road speed should be such as to maintain full control over steering and braking.
- 6) Be careful while backing up, make sure you have good visibility.

SAFETY IN STORAGE

- 1) Provide adequate supports to prevent any accidental overturning of the Snowblower.
- 2) Do not let children play in the area where the snowblower is stored.

2

DECALS

SAFETY DECALS

The safety decals are affixed wherever special safety precautions are indicated. Locate them on the machine and read them carefully. If a decal is damaged, lost or illegible, install a new one. The following photos indicate where each one must be installed.

3

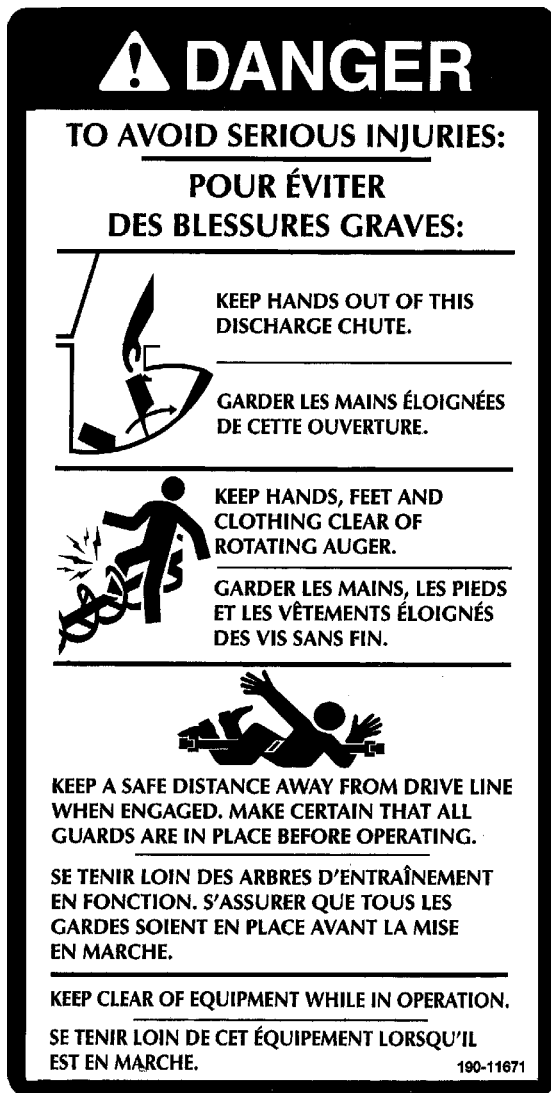


Figure 3
Decal A

Part no.: 190-11671

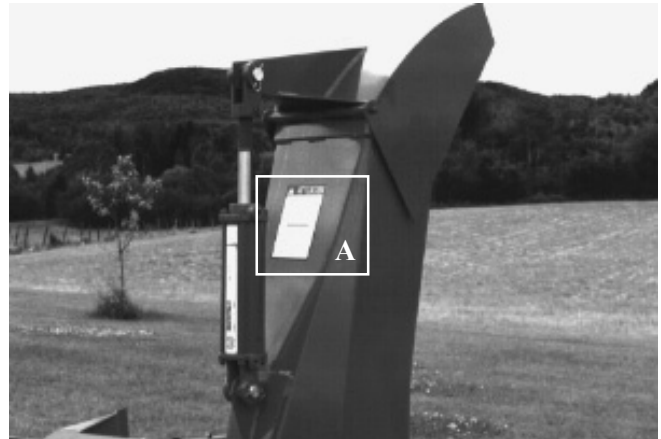


Figure 4

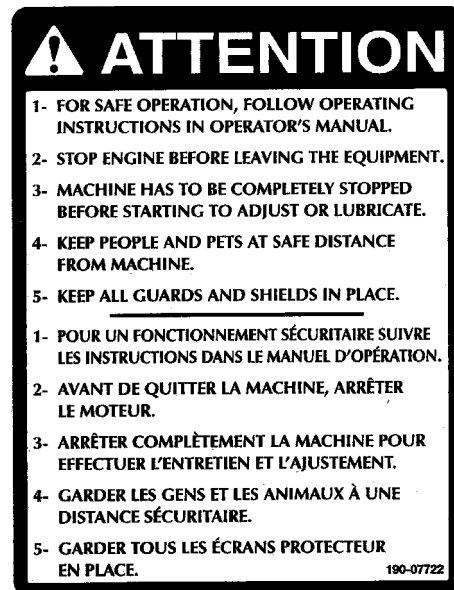


Figure 5
Decal B

Part no.: 190-07722

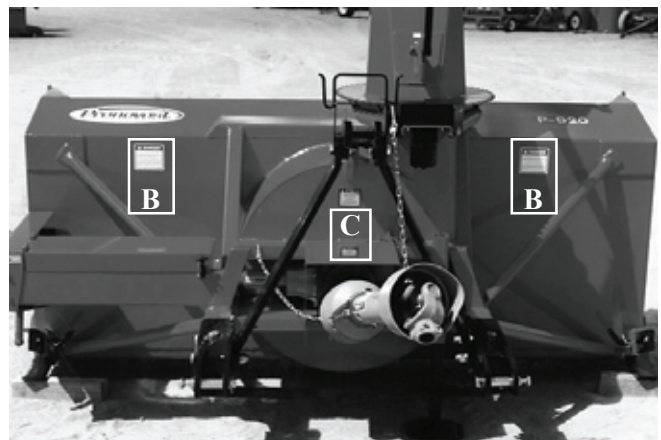


Figure 6

DECALS (cont'd)



Figure 7
Decal C

Part no.: 190-11641

If your snowblower is equipped with a reduction gear box, the decal C will be the one shown below.



Figure 8
Autocollant C

Pièce no.: 190-11651

Decal E in Fig. 9 is located directly on the P.T.O. shaft. It is not visible when the safety shield is in place. It must never be visible when you operate the equipment.



Figure 9
Decal E

Part no.: A108

3

DECALS (cont'd)

3

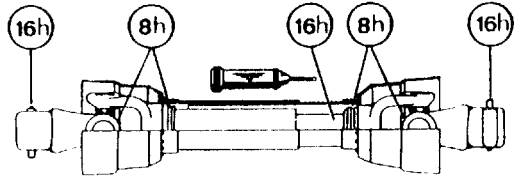


Figure 10
Decal F

Part no.: A 109

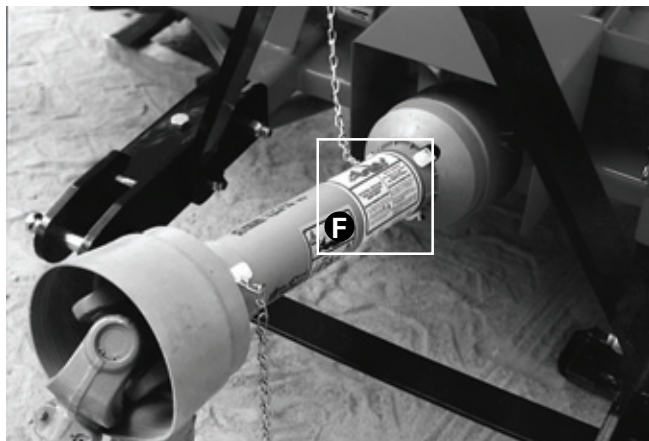


Figure 11



Figure 12
Decal D

Part no.: A103

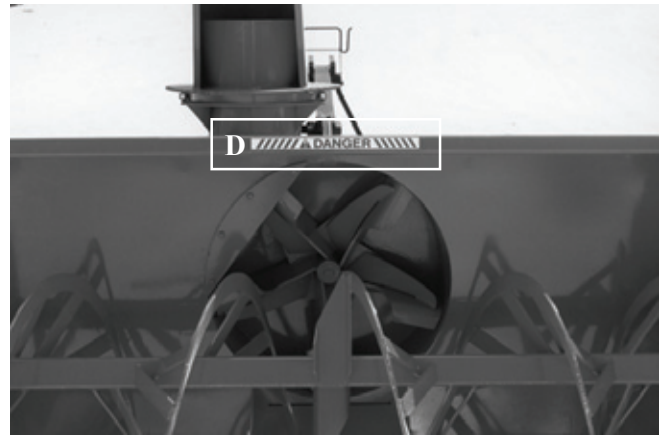


Figure 13

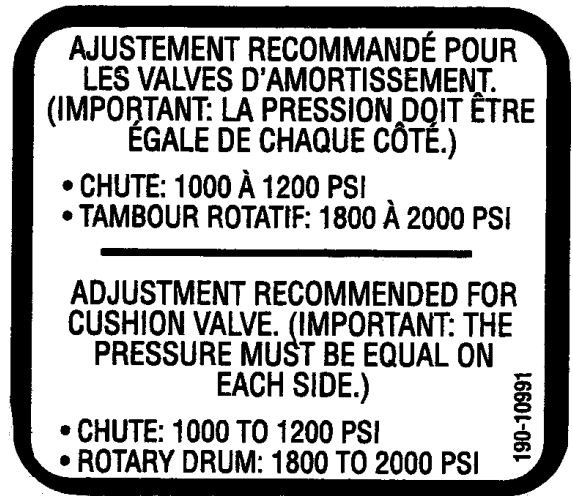


Figure 14
Decal G

Part no.: 190-10991

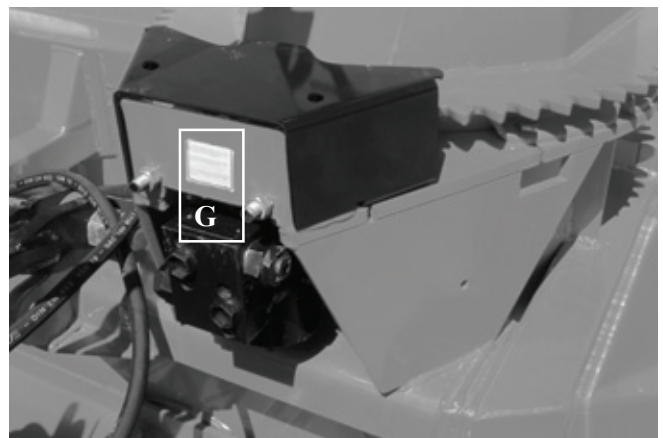


Figure 15

DECALS (cont'd)

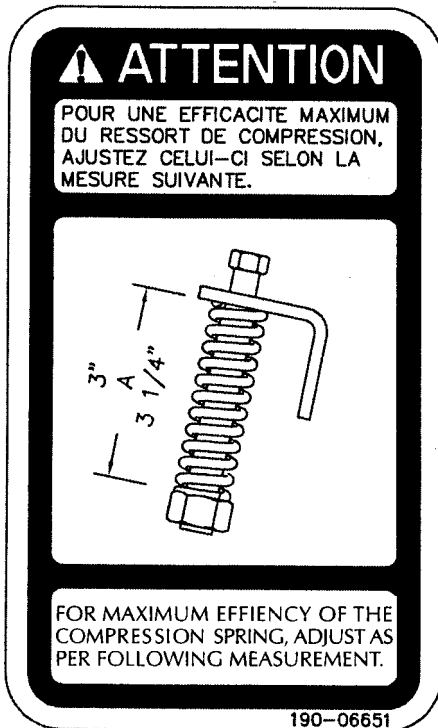


Figure 16
Decal H

Part no.: 190-06651

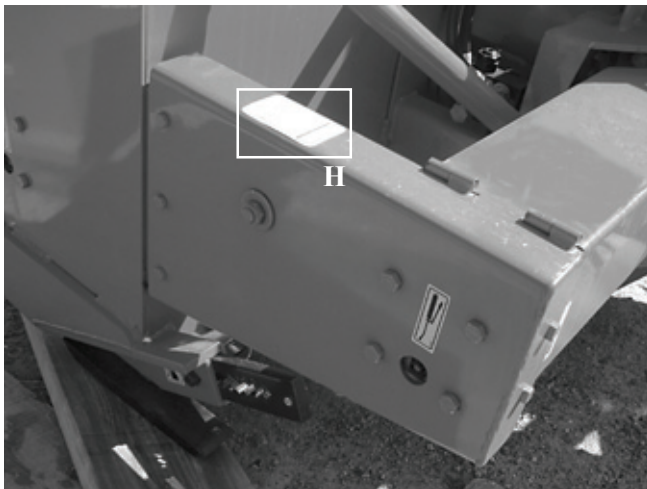


Figure 17

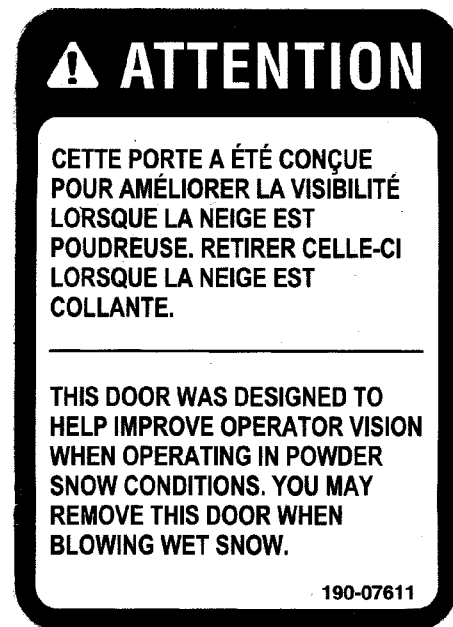


Figure 18
Decal I

Part no.: 190-07611



Figure 19

DECALS (cont'd)

3



Figure 20
Decal J

Part no.: 190-11591

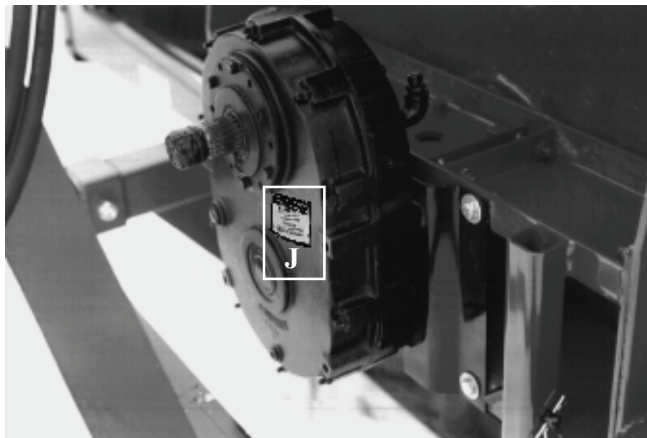


Figure 21

MAINTENANCE DECALS

The maintenance decals indicate the points requiring lubrication. Refer to maintenance section for more details.

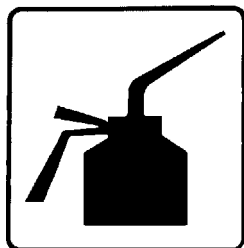


Figure 22

Part no.: A 105

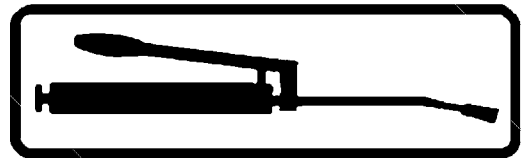


Figure 23

Part no.: A 106



Figure 24
Decal K

Part no.: 190-11581

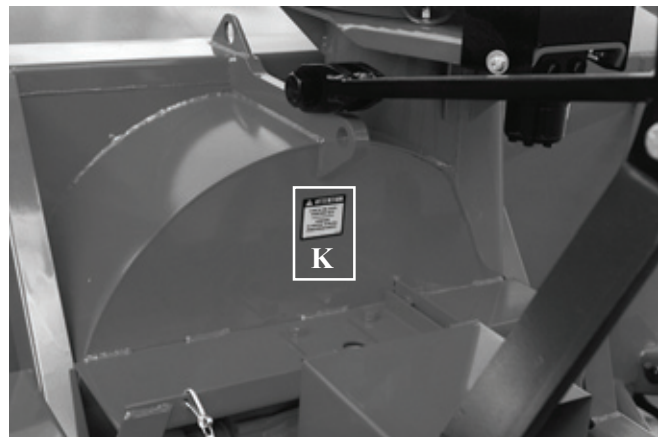


Figure 25

ASSEMBLY



Figure 26

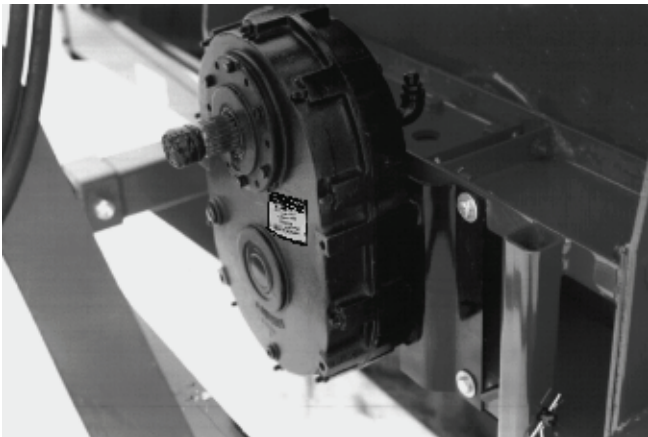


Figure 27

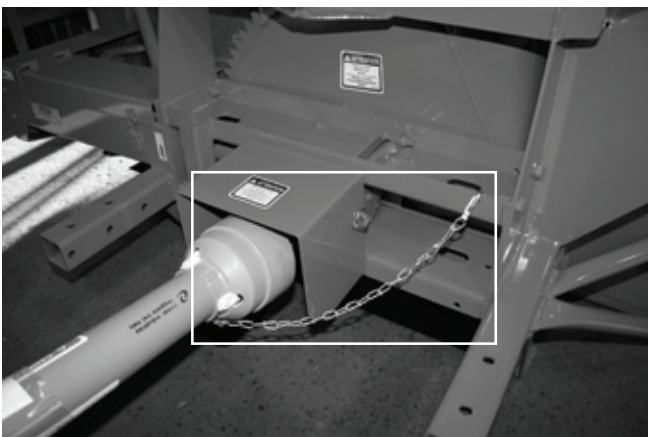


Figure 28

ASSEMBLY

- 1) The Snowblower is shipped partly assembled.
- 2) Install 3-point system according to the model of your Snowblower. (See section 10 for parts numbers). Use the holes most convenient to the type of tractor used (Fig. 26).
- 3) If your snowblower is equipped with the optional 1000 to 540 RPM reducer, install it on the gear box with the plate included (Fig. 27).
- 4) Install P.T.O. shaft with the shear pin end onto the Snowblower gear box. Then attach safety shield support chain as shown (Fig. 28). **WARNING:** The telescoping tubes of the drive shaft must never be allowed to bottom out while maintaining a minimum overlap of 6 inches.
- 5) If you install a hydraulic cylinder on the chute deflector, use model 25TR08 cylinder.
- 6) When installing chute, grease the groove of the UHMW slide in order to prevent the corrosion of the rim of the chute.
- 7) Install the chute rotation mechanism.

4

STARTING-UP

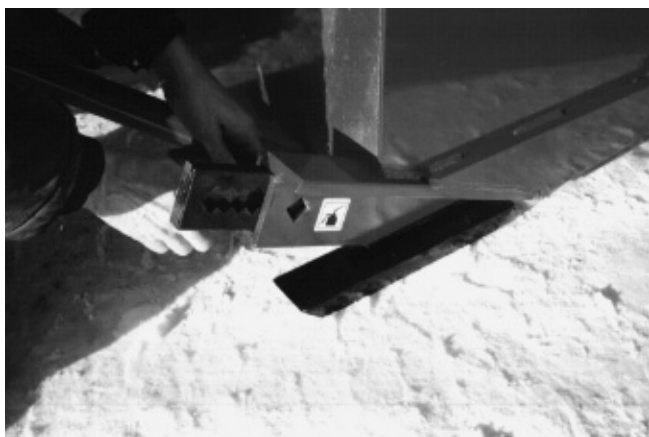


Figure 29

5

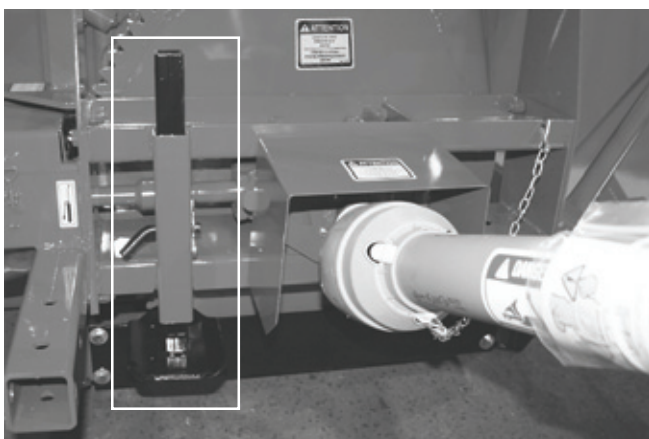


Figure 30



Figure 31

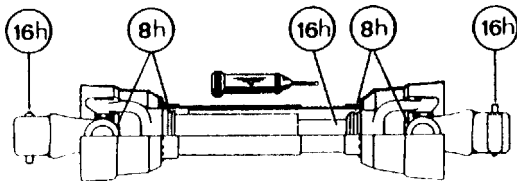
START-UP PROCEDURES

- 1) Check oil level in gearbox and in speed reducer if so equipped. Adjust to required oil level as per drawing in Parts List section. Use SAE 80W90 oil.
- 2) Lubricate all points with a good quality multipurpose grease.
- 3) Check chain take-up adjustment. The spring maintaining the tension must be compressed to a length between 3" and 3 1/4".
- 4) Verify for adequate tightness of all fastening devices. Refer to torque chart on page 58.
- 5) Adjust skid shoes according to ground conditions (Fig. 29).
- 6) Following the installation of the Snowblower on the tractor, **do not forget** to lift the storage support (Fig. 30).
- 7) Make sure of a 540 RPM input to your snowblower.
- 8) Check impeller adjustment. The tip of the blades should be approximately 1/8" to 3/16" from the discharge wall of the drum. If necessary, adjust with the take-up screws provided (Fig. 31).
- 9) In order to avoid damaging your snowblower, adjust the speed of descent of your 3 point hitch to prevent striking the ground too hard.
- 10) Adjust the hydraulic flow in order to have a good control of the rotation speed of the chute.

MAINTENANCE

GENERAL MAINTENANCE

- 1) Wipe off all grease fittings with a clean cloth before adding grease in order to avoid injecting dirt and sand.
- 2) Repair or replace damaged grease fittings.
- 3) Lubricate all grease fittings every 8 hours of operation.
- 4) Lubricate drive chain every 8 hours of operation.
- 5) Lubricate P.T.O. shaft as indicated below:



Pull out the P.T.O. and lubricate between the two tubes with low temperature grease. Drive line tubes must slide easily even in cold weather. Clean off old hardened grease and apply fresh grease as needed.

- 6) Check oil level in gear box once a month. Adjust to required oil level as per drawing in Parts List section. Use SAE 80W90 oil.
- 7) Check tension of drive chain every 24 hours of operation and adjust if necessary.
- 8) Check for tightness of bearing collars every 48 hours of operation.
- 9) Change gearbox oil once a year. Adjust to required oil level as per drawing in Parts List section. Use SAE 80W90 oil.

- 10) Check all nuts and bolts once a year. If necessary use torque chart on page 58.
- 11) Standard scraper blades are reversible. Reverse when one edge is worn out.
- 12) For the auger drive shaft, always use a grade 5 shear bolt.
- 13) For the PTO shaft, always use a grade 10.9 shear bolt at 540 RPM or a grade 8.8 shear bolt at 1000 RPM.
- 14) UHMW slides do not require lubrication except at the end of the season in order to prevent corrosion of steel components that are in contact with the UHMW material.

If your snowblower is equipped with the optional speed reducer

- 15) After 10 working hours, the chain's adjustment (if applicable) must be checked and every 100 working hours. Please refer to section: Maintenance on Speed Reducer (with chains).
- 16) Check oil level in speed reducer once a month. Adjust to required oil level as per drawing in Parts List section. Use XL EP 68/220 oil.
- 17) Drain the oil of the speed reducer once a year. Adjust to required oil level as per drawing in Parts List section. Use XL EP 68/220 oil.

6

STORAGE

- 1) Store the Snowblower in a cool, dry place.
- 2) Support the Snowblower with wooden blocks.
- 3) Keep all piston rods in the retracted position. This will assure better protection against the elements.
- 4) Clean your Snowblower.
- 5) Thoroughly inspect all parts of the Snowblower. Replace or repair worn or defective parts.
- 6) Touch-up or repaint if necessary.
- 7) Lubricate all points before storage.

TROUBLESHOOTING

P.T.O. SHAFT

PROBLEM	POSSIBLE CAUSE	CORRECTION
<ul style="list-style-type: none"> - Premature wear of U-joints and/ or bluish color of cross journals. 	<ul style="list-style-type: none"> - Insufficient lubrication. - Excessive working angle. 	<ul style="list-style-type: none"> - Follow lubrication recommendations. - Replace defective U-joints. - Make sure the snowblower inlet face is perpendicular to the ground and if possible readjust 3-point hitch in order to position the snowblower further away from tractor.
<ul style="list-style-type: none"> - Gripping or premature wear of telescoping members. 	<ul style="list-style-type: none"> - Too much sliding under load. - Tube overlap too-short: minimum recommended is 6". - Insufficient lubrication. - Contaminants (sand, etc.). 	<ul style="list-style-type: none"> - Avoid raising snowblower while in operation. - Readjust 3-point hitch in order to position the snowblower closer to the tractor. - Follow lubrication recommendations. - Replace defective telescopic members.
<ul style="list-style-type: none"> - Damaged or jammed locking pin or bolt. 	<ul style="list-style-type: none"> - Pin or orifice contaminated by sand, ice, etc. - Telescoping members too long, exerting pressure on locking device. 	<ul style="list-style-type: none"> - Clean and grease. - Readjust 3-point hitch in order to position the snowblower further away from tractor.
<ul style="list-style-type: none"> - Premature wear of guard tube bearing ring. 	<ul style="list-style-type: none"> - Lack of lubrication. - Wrong installation of guard chain. - Part of the guard in contact with the equipment. 	<ul style="list-style-type: none"> - Follow lubrication instructions. - Adjust chain to prevent interference between guard & equipment. - Replace worn or damaged bearing rings.
<ul style="list-style-type: none"> - Cut or deformed safety guard tubes. 	<ul style="list-style-type: none"> - Tubes in contact with the equipment. 	<ul style="list-style-type: none"> - Eliminate any interference between tubes and equipment or tractor. - Replace damaged tubes.

TROUBLESHOOTING (cont'd)

SNOWBLOWER

PROBLEM	POSSIBLE CAUSE	CORRECTION
- The snow is not being thrown as far as usual.	- Tractor RPM too low. - Gap too wide between impeller blade tip and drum outlet wall. - Insufficient tractor HP.	- Raise P.T.O. speed to a minimum of 540 RPM. - Adjust impeller blades closer to drum outlet (1/8" to 3/16"). - Reduce travel speed.
- Frequent plugging of discharge chute.	- Tractor RPM too low. - Tractor RPM reduced too early with snow still in the Snowblower. - Slippage of PTO clutch mechanism. - Wet snow condition.	- Raise P.T.O. speed to a minimum of 540 RPM. - Make sure the Snowblower is completely empty before reducing RPM, especially on tractors with foot controlled RPM. - Repare clutch. - Reduce travel speed. - Remove the chute access panel.
- The impeller will not turn.	- Shear bolt broken on drive shaft.	- Replace shear bolt.
- The auger will not turn.	- Shear bolt broken on drive shaft. - Shear bolt broken on auger drive shaft. - Broken drive chain. - Broken key on motor.	- Replace shear bolt. - Replace shear bolt. - Fix or replace chain. - Replace the key.
- The rotating drum will not turn.	- Ice accumulation. - Wrong hydraulic connections.	- Remove ice. - Check hydraulic connections.
- The rotating drum will not hold it's position when blowing via the spout	- Cushion valve setting too low - Tension of the spring in drum locking mechanism insufficient	- Reset cushion valve up to 1800 psi (max) - Increase tension of spring by adding shim(s)
- The chute will not turn.	- Ice accumulation. - Wrong hydraulic connections. - Broken key on motor.	- Remove ice. - Check hydraulic connections. - Replace the key.

8

SPECIFICATIONS

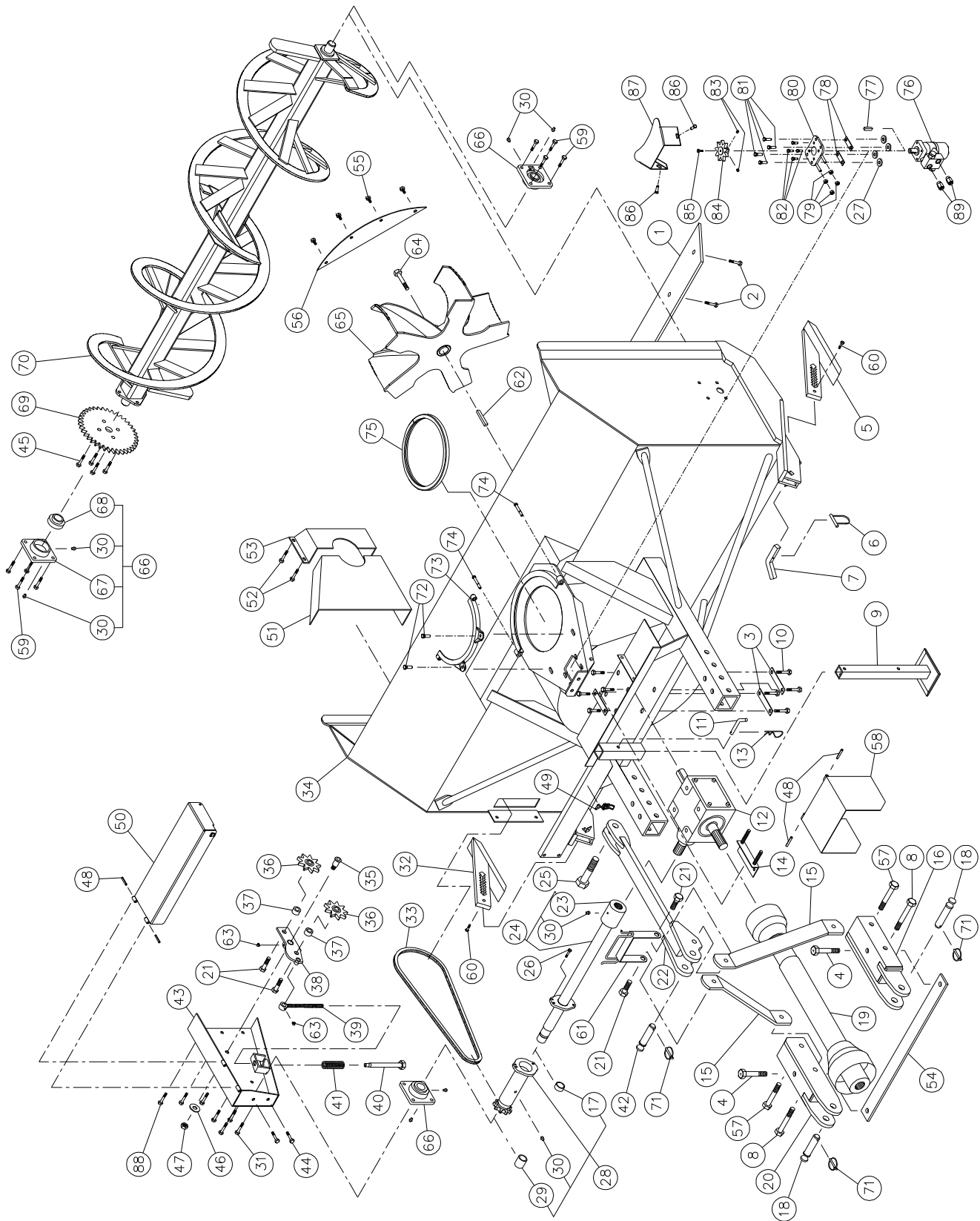
		GROUP II			
Snowblower model		P-920	P-920 -98	P-922	P-98134
Snowblower model		P-920 TRC	P-920 TRC-98	P922 TRC	P-98134 TRC
Horse power recommended (HP)	min.-max.	75 to 100	75 to 100		90 to 125
Working width	in. - (cm)	92"(2337)	98" (2489)	92"(2337)	98" (2489)
Cutting height	in. - (cm)	39" (991)	39" (991)	44" (1118)	40" (1016)
Height - chute base	in. - (cm)	41" (1041)	41" (1041)	44"(1118)	43 1/8" (1095)
Height - chute base, TRC model	in. - (cm)	46"(1168)	46"(1168)	49"(1245)	49" (1245)
Impeller diameter	in. - (cm)	30" (76)	30" (76)	34" (86)	34" (86)
Depth of drum	in. - (cm)	12" (30.5)	12" (30.5)	12" (30.5)	12" (30.5)
Impeller blades		5	5	5	5
Size of impeller shaft	in. - (cm)	2"	2"	2"	2"
Height - Impeller center	in. - (cm)	20" (50.8)	20" (50.8)	21" (53)	21" (53)
Impeller RPM		540	540	540	540
Number of augers		1	1	1	1
Main auger diameter	in. - (cm)	23" (58)	23" (58)	23" (58)	23" (58)
Upper auger 13"/33 cm dia.		-	-	Opt.	-
Drive chain - main auger		80	80	80	80
Oil bath sealed gear box		Std.	Std.	Std.	Std.
Chute rota- tion mechanism	Manual	-	-	-	-
	Hydraulic (motor)	Std.	Std.	Std.	Std.
Number of shear bolts		2	2	2	2
Hitch category		2	2	2	2
Balanced impeller		Std.	Std.	Std.	Std.
Balanced auger		Std.	Std.	Std.	Std.
Drum rotation for hydraulic motor		Std.	Std.	Std.	Std.
1000 to 540 RPM reducer		Opt.	Opt.	Opt.	Opt.
Scraper blades	Standard steel - not rev.	-	-	-	-
	Standard steel - rev.	Std.	Std.	Std.	Std.
	Carbon steel 1/2" x 3"	-	-	-	-
	Carbon steel 1/2" x 4"	Opt.	Opt.	Opt.	Opt.
	Carbon steel 1/2" x 6"	Opt.	Opt.	Opt.	Opt.
	Tivar	Opt.	Opt.	Opt.	Opt.
	Stainless steel 1/2" x 3"	-	-	-	-
Adjustable skid shoes	Standard steel	Std.	Std.	Std.	Std.
	Carbon steel	Opt.	Opt.	Opt.	Opt.
	ROCKTEC	Opt.	Opt.	Opt.	Opt.
	Stainless steel	Opt.	Opt.	Opt.	Opt.
Full flight auger (industrial)		Opt.	Opt.	Opt.	Opt.
Chute	regular	Opt.	Opt.	Opt.	Opt.
	semi-industrial	Opt.	Opt.	Opt.	Opt.
	quick attach indust. - extension 24" or 48"	Opt.	Opt.	Opt.	Opt.
	telescopic	Opt.	Opt.	Opt.	Opt.
Deflector	manual	Opt.	Opt.	Opt.	Opt.
	hydraulic	Opt.	Opt.	Opt.	Opt.
Bearing / ductile iron casting		Std.	Std.	Std.	Std.
Lateral blades		Opt.	Opt.	Opt.	Opt.
P.T.O.	(standard)	T80	T80	T80	T80
P.T.O.	(optional)	T90	T90	T90	T90
Weight	lbs - kg	1650 (748)	1725 (781)	1842 (837)	1880 (855)
	lbs - kg	1800 (816)	1875 (848)	1992 (905)	2030 (922)

Design and specifications subject to change without notice.

Shaded lines apply only to models with rotary drum (TRC).

SNOWBLOWER P-920 P-920-98

170-03893



SNOWBLOWER P-920 P-920-98 (cont'd)

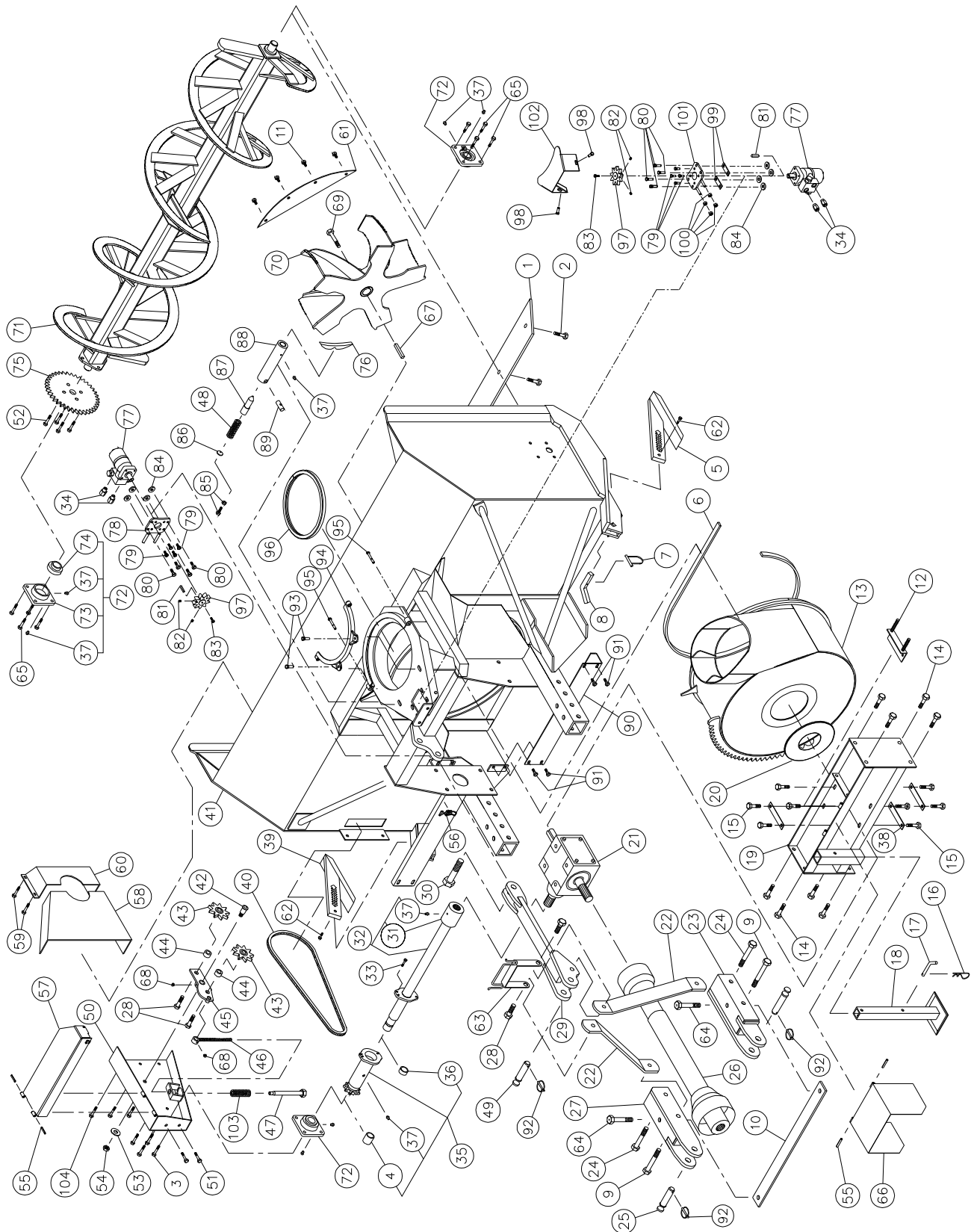
REF.	PART #	DESCRIPTION	QTY	
			P-920	P-920-98
1	140-00812	Reversible scraper blade 1/2" x 4" x 84½" lg	1	-
1	140-00832	Reversible scraper blade 1/2" x 4" x 90½" lg	-	1
2	319-38310	Plow bolt 7/16" x 11/2" lg + nut & lock washer	9	9
3	140-10761	Back plate	3	3
4	302-46550	Bolt 3/4" NF x 5 1/2" lg + nylon locknut	2	2
5	110-04531	Skid shoe (right side)	1	1
6	8112	Lock pin 1/4"	2	2
7	140-03361	Skid shoes lock	2	2
8	302-46610	Bolt 3/4" NF x 6 1/2" lg + nylon lock nut	2	2
9	9462	Storage support	1	1
10	300-44310	Bolt 5/8" NC x 1 1/2" lg + lock washer + 6 flat washers	8	8
11	8220	Storage support pin	1	1
12	9307	Gear box	1	1
13	Std.	Hitch pin clip 5/32"	1	1
14	9428	Adjustment plate for gear box + 4 nuts 1/2" NC	1	1
15	140-05493	3-points side bar	2	2
16	110-15214	Right lower hitch	1	1
17	160-06901	Aluminium-bronze bushing 1 3/4" i.d. x 2" o.d. x 1/2" lg	1	1
18	9269	Pin category 2 (1 1/8" diameter)	2	2
19	9225-EG	P.T.O. shaft T80	1	1
19	9475	P.T.O. shaft T90	opt.	opt.
20	110-15213	Left lower hitch	1	1
21	300-46400	Bolt 3/4" NC x 3" lg (welded) + nylon lock nut	4	4
22	110-15421	Upper hitch	1	1
23	6467	Spined adaptor 1¾" -20 (welded)	1	1
24	110-18252	Auger drive shaft 34 7/16" lg overall (incl. # 23 and 30) (up to serial # 35730)	1	-
24	110-18253	Auger drive shaft 34 7/16" lg overall (incl. # 23 and 30) (from serial # 35731 and up)	1	-
24	110-18262	Auger drive shaft 37 7/16" lg overall (incl. # 23 and 30) (up to serial # 35730)	-	1
24	110-18263	Auger drive shaft 37 7/16" lg overall (incl. # 23 and 30) (from serial # 35731 and up)	-	1
25	300-54460	Bolt 1 1/4" NC x 4" lg + nylon lock nut	1	1
26	300-34310	Bolt 5/16" NC x 1 1/2" lg grade 5 + nylon lock nut (up to serial # 35730)	1	1
26	300-34340	Bolt 5/16" NC x 2" lg grade 5 + nylon lock nut (from serial # 35731 and up)	1	1
27	150-12741	Flat washer 7/16" heavy-duty	4	4
28	110-18242	Sprocket #80 + shearplate (incl. # 17, 29 & 30) (up to serial # 35730)	1	1
28	110-18243	Sprocket #80 + shearplate (incl. # 17, 29 & 30) (from serial # 35731 and up)	1	1
29	160-07311	Aluminium-bronze bushing 1 1/2" i.d. x 1 7/8" o.d. x 1 1/4" lg	1	1
30	Std.	Grease fitting ¼" -28 straight	8	8
31	300-40310	Bolt 1/2" NC x 1 1/2" lg + nylon locknut (thin) & flat washer 7/16"	4	4
32	110-04521	Skid shoe (left side)	1	1
33	190-00431	Chain #80 x 79" lg (79 links)	1	1
33	26A80	Connecting link #80	1	1
33	59-80	Offset link #80 (if required)	1	1
34	120-02797	Frame P-920	1	-
34	120-02817	Frame P-920-98	-	1
35	150-00332	Idler clevis pin	1	1
36	9287	Idler sprocket #80 (steel)	2	2
37	160-06511	Spacer 3/4" i.d. x 1 1/4 o.d. x 3/4" lg	2	2
38	110-01052	Idler	1	1
39	110-01063	Threaded rod for idler adjustment + nut 7/16" NC	1	1
40	110-01071	Threaded tube for idler adjustment	1	1
41	9688	Compression spring	1	1
42	150-05961	Pin category 2 (1" diameter) (top link)	1	1
43	110-10564	Chain guard	1	1

SNOWBLOWER P-920 P-920-98 (cont'd)

REF.	PART #	DESCRIPTION	QTY	
			P-920	P-920-98
44	300-38250	Bolt 7/16" NC x 1" lg + nylon locknut	2	2
45	300-38310	Bolt 7/16" NC x 1 1/2" lg + two-way locknut	4	4
46	376-44000	Flat washer 5/8"	1	1
47	346-45000	Nylon locknut 5/8" NC thin	1	1
48	Std.	Roll pin 5/16" x 2" lg	4	4
49	8374	Adjustable clamp fastener (welded)	1	1
50	110-21001	Side shaft guard for P-920	1	-
50	110-27621	Side shaft guard for P-920-98	-	1
51	130-01383	Inside guard (welded)	1	1
52	300-36250	Bolt 3/8" NC x 1" lg + nylon lock nut & flat washer	4	4
53	8925	Inside guard (bolted)	1	1
54	140-03441	Brace 3/8" x 2 1/2" x 38 1/4"	1	1
55	300-38280	Bolt 7/16" NC x 1 1/4" lg + nylon locknut	4	4
56	130-02111	Deflector	1	1
57	302-46580	Bolt 3/4" NF x 6" lg + nylon locknut	2	2
58	110-12541	Hinged P.T.O. shroud	1	1
59	300-40325	Bolt 1/2" NC x 1 3/4" lg + nylon locknut & flat washer 7/16"	8	8
60	300-32310	Bolt 1/4" NC x 1 1/2" lg + nylon locknut	2	2
61	110-15201	Hoses support	1	1
62	9285	Square key 1/2" x 1/2" x 4" lg	1	1
63	Std.	Grease fitting 1/4" - 28 90 deg.	2	2
64	300-44310	Impeller cap screw 5/8" x 1 1/2" lg (ass. with lock-tite 242) + lock washer	1	1
65	110-04743	Impeller 30" ø 5 blades	1	1
66	UCFD208-24	Bearing 1 1/2" + flange + 2 straight grease fitting	3	3
67	FD208	Flange for 2 grease fitting	3	3
68	UC208-24	Bearing 1 1/2"	3	3
69	9281	Sprocket 80A30 T 1 1/2" ø	1	1
70	110-02061	Auger P-920	1	-
70	110-05171	Auger P-920-98	-	1
71	Std.	Linch pin 1/4" x 1 3/4"	3	3
72	300-40310	Bolt 1/2" NC x 1 1/2" lg + nylon locknut & flat washer	2	2
73	110-01341	Retaining bracket	1	1
74	300-38400	Bolt 7/16" NC x 3" lg + nylon locknut	2	2
75	8149	U-shaped UHMW approx 14" interior dia.	1	1
76	MLH 250	"Orbit" hydraulic motor + cushion valve	opt.	opt.
76	MLH 315	"Orbit" hydraulic motor + cushion valve	opt.	opt.
77	8369	"Key" for hydraulic motor	opt.	opt.
78	140-09571	Spacer 1/8" x 1" x 3 1/4" lg for hydraulic motor	2	2
79	336-38000	Nut 7/16" NC	4	4
80	110-20811	Hydraulic motor support	1	1
81	300-38310	Bolt 7/16" NC x 1 1/2" lg + nylon locknut & flat washer	4	4
82	300-36250	Bolt 3/8" NC x 1" lg + lock washer	4	4
83	323-36160	Hexagonal socket set screw 3/8" NC x 3/8" lg	2	2
84	110-44331	Sprocket 9 teeth	1	1
85	300-32220	Bolt 1/4" NC x 3/4" lg + lock washer	1	1
86	300-36280	Bolt 3/8" NC x 1 1/4" lg + nylon locknut & lock washer	2	2
87	130-29491	Guard	1	1
88	300-38250	Bolt 7/16" NC x 1" lg + nylon locknut & flat washer 3/8"	3	3
89	RSP-1/16 x 10 ORB	Kit of 2 unidirectional restrictors	opt.	opt.

SNOWBLOWER P-920TRC P-920TRC-98

170-03905



SNOWBLOWER P-920TRC P-920TRC-98 (cont'd)

REF.	PART #	DESCRIPTION	P-920TRC	P-920TRC-98
			QTY	
1	140-00812	Reversible scraper blade 1/2" x 4" x 84½" lg	1	-
1	140-00832	Reversible scraper blade 1/2" x 4" x 90½" lg	-	1
2	319-38310	Plow bolt 7/16" NC x 1 1/2" lg + nut & lock washer	9	9
3	300-40310	Bolt 1/2" NC x 1 1/2" lg + nylon locknut (thin) & flat washer 7/16"	4	4
4	160-07311	Aluminium-bronze bushing 1 1/2" i.d. x 1 7/8" o.d. x 1 1/4" lg	1	1
5	110-04531	Skid shoe (right side)	1	1
6	9435	U-shaped UHMW 3/8" x 7/8" x 97" lg	1	1
7	8112	Lock pin 1/4"	2	2
8	140-03361	Skid shoes lock	2	2
9	302-46610	Bolt 3/4" NF x 6 1/2" lg + nylon lock nut	2	2
10	140-03441	Brace 3/8" x 2 1/2" x 38 1/4"	1	1
11	300-38280	Bolt 7/16" NC x 1 1/4" lg + nylon locknut	4	4
12	9428	Adjustment plate for gear box + 4 nuts ½" NC.....	1	1
13	110-12614	Rotary drum 30" ø x 12" depth	1	1
14	300-46340	Bolt 3/4" NC x 2" lg + nylon lock nut	8	8
15	300-44310	Bolt 5/8" NC x 1 1/2" lg + lock washer.....	8	8
16	Std.	Hitch pin clip 5/32"	1	1
17	8220	Storage support pin	1	1
18	9462	Storage support	1	1
19	110-01682	Gear box support	1	1
20	9432	UHMW flat washer 3/16" x 8 7/8" i.d. x 12" o.d.	1	1
21	9307	Gear box	1	1
22	140-05472	3-points side bar	2	2
23	110-15214	Right lower hitch	1	1
24	302-46580	Bolt 3/4" NF x 6" lg + nylon lock nut	2	2
25	9269	Pin category 2 (1 1/8" diameter)	2	2
26	9225-EG	P.T.O. shaft T80	1	1
26	9475	P.T.O. shaft T90	opt.	opt.
27	110-15213	Left lower hitch	1	1
28	300-46400	Bolt 3/4" NC x 3" lg (welded) + nylon lock nut	4	4
29	110-15311	Upper hitch	1	1
30	300-54460	Bolt 1 1/4" NC x 4" lg + nylon lock nut	1	1
31	6467	Splined adaptor 1 ¾" - 20 splines (welded)	1	1
32	110-18252	Auger drive shaft 34 7/16" lg overall (incl. # 31 & 37) (up to serial # 35730).....	1	-
32	110-18253	Auger drive shaft 34 7/16" lg overall (incl. # 31 & 37)(from serial # 35731 and up)..	1	-
32	110-18262	Auger drive shaft 37 7/16" lg overall (incl. # 31 & 37) (up to serial # 35730)	-	1
32	110-18263	Auger drive shaft 37 7/16" lg overall (incl. # 31 & 37) (from serial # 35731 and up) ...	-	1
33	300-34310	Bolt 5/16" NC x 1 1/2" lg grade 5 + nylon locknut (up to serial # 35730)	1	1
33	300-34340	Bolt 5/16" NC x 2" lg grade 5 + nylon locknut (from serial # 35731 and up)	1	1
34	RSP-1/16 x 10 CRB	Kit of 2 unidirectional restrictors	opt.	opt.
35	110-18242	Sprocket #80 + shearplate (incl. # 4, 36 & 37) (up to serial # 35730).....	1	1
35	110-18243	Sprocket #80 + shearplate (incl. # 4, 36 & 37) (from serial # 35731 and up).....	1	1
36	160-06901	Aluminium-bronze bushing 1 3/4" i.d. x 2" o.d. x 1/2" lg	1	1
37	Std.	Grease fitting 1/4"-28 straight	9	9
38	140-10761	Back plate	3	3
39	110-04521	Skid shoe (left side)	1	1
40	190-00431	Chain #80 x 79" lg	1	1
40	26A80	Connecting link #80	1	1

SNOWBLOWER P-920TRC P-920TRC-98 (cont'd)

REF.	PART #	DESCRIPTION	QTY	
			P-920TRC	P-920TRC-98
40	59-80	Offset link #80 (if required)	1	1
41	120-02857	Frame P-920TRC	1	-
41	120-02837	Frame P-920-98TRC	-	1
42	150-00332	Idler clevis pin	1	1
43	9287	Idler sprocket #80	2	2
44	160-06511	Spacer 3/4" i.d. x 1 1/4" o.d. x 3/4" lg	2	2
45	110-01052	Idler	1	1
46	110-01063	Threaded rod for idler adjustment + nut 7/16" NC	1	1
47	110-01071	Threaded tube for idler adjustment	1	1
48	9473	Compression spring (black)	1	1
49	150-05961	Pin category 2 (1" diameter) (top link)	1	1
50	110-10564	Chain guard	1	1
51	300-38250	Bolt 7/16" NC x 1" lg + nylon lock nut	2	2
52	300-38310	Bolt 7/16" NC x 1 1/2" lg + two-way locknut	4	4
53	376-40000	Flat washer 5/8"	1	1
54	346-45000	Nylon locknut 5/8" NC thin	1	1
55	Std.	Roll pin 5/16" x 2" lg	4	4
56	8374	Adjustable clamp fastener (welded)	1	1
57	110-21011	Side shaft guard for P-920TRC	1	-
57	110-28071	Side shaft guard for P-920TRC-98	-	1
58	130-01383	Inside guard (welded)	1	1
59	300-36250	Bolt 3/8" NC x 1" lg + nylon locknut & flat washer	4	4
60	8925	Inside guard (bolted)	1	1
61	130-02111	Deflector	1	1
62	300-32310	Bolt 1/4" x 1 1/2" lg + nylon locknut	2	2
63	110-15201	Hoses support	1	1
64	302-46550	Bolt 3/4" NF x 5 1/2" lg + nylon locknut	2	2
65	300-40325	Bolt 1/2" NC x 1 3/4" lg + nylon locknut & flat washer 7/16"	8	8
66	110-12541	Hinged P.T.O. shroud	1	1
67	9285	Square key 1/2" x 1/2" x 4" lg	1	1
68	Std.	Grease fitting 1/4" - 28 90 deg.	2	2
69	300-44310	Impeller cap screw 5/8" NC x 1 1/2" lg (ass. with lock-tite 242) + lock washer ...	1	1
70	110-04743	Impeller 30" ø 5 blades	1	1
71	110-02061	Auger P-920	1	-
71	110-05171	Auger P-920-98	-	1
72	UCFD208-24	Bearing 1 1/2" + flange + 2 straight grease fitting	3	3
73	FD208	Flange for 2 grease fitting	3	3
74	UC208-24	Bearing 1 1/2"	3	3
75	9281	Sprocket 80A30 T 1 1/2" ø	1	1
76	130-29521	Stop block for drum lock (welded on drum)	1	1
77	MLH-250	Hydraulic motor "Orbit" + cushion valve	opt.	opt.
77	MLH-315	Hydraulic motor "Orbit" + cushion valve	opt.	opt.
78	110-18441	"Orbit" motor support + 4 nut 7/16" NC	1	1
79	300-36250	Bolt 3/8" x 1" lg + lock washer	8	8
80	300-38310	Bolt 7/16" NC x 1 1/2" lg + nylon locknut & flat washer	8	8
81	8369	Key for "Orbit" motor	opt.	opt.
82	323-36160	Hexagonal socket set screw 3/8" NC x 3/8" lg	4	4
83	300-32220	Bolt 1/4" NC x 3/4" lg + lock washer	2	2
84	150-12741	Flat washer 7/16" heavy-duty	8	8

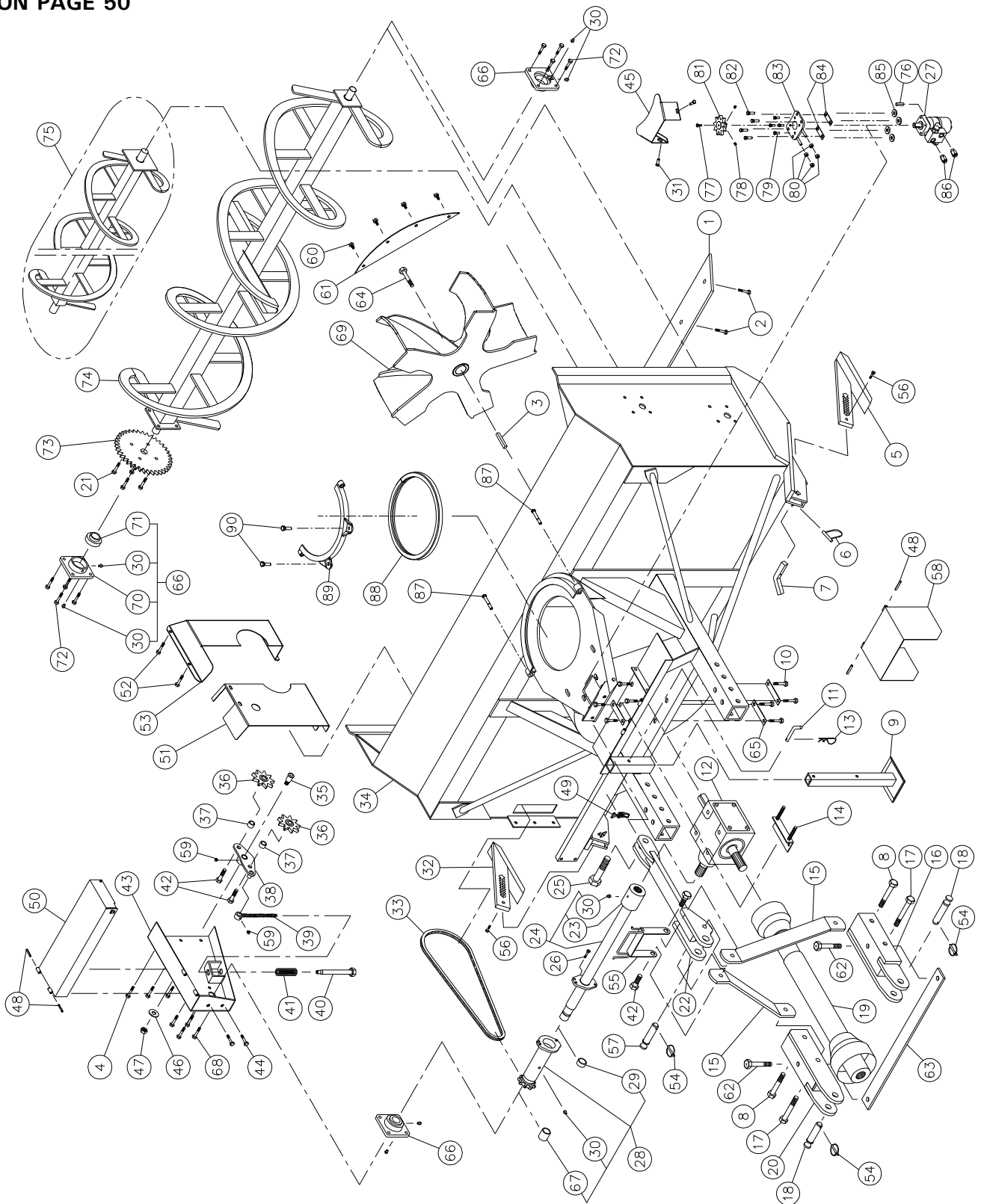
SNOWBLOWER P-920TRC P-920TRC-98 (cont'd)

REF.	PART #	DESCRIPTION	QTY	
			P-920TRC	P-920TRC-98
85	300-38341	Bolt 7/16" NC x 2" lg (full length thread) + lock nut.....	1	1
86	130-08471	Washer	1	1
87	150-01542	Latch pin - drum lock	1	1
88	160-03952	Body - drum lock (welded on frame)	1	1
89	150-02561	Pin	1	1
90	130-29471	Guard for ring gear segment	1	1
91	300-40280	Bolt 1/2" NC x 1 1/4" lg + nylon locknut + flat washer	4	4
92	Std.	Lynch pin 1/4" x 1 3/4" lg	3	3
93	300-40310	Bolt 1/2" NC x 1 1/2" lg + nylon locknut & flat washer	2	2
94	110-01341	Retaining bracket	1	1
95	300-38400	Bolt 7/16" NC x 3" lg + nylon locknut	2	2
96	8149	U-shaped UHMW approx. 14" interior dia.	1	1
97	110-44331	Sprocket 9 tooth	2	2
98	300-36280	Bolt 3/8" NC x 1 1/4" lg + lockwasher	2	2
99	140-09571	Spacer 1/8" x 1" x 3 1/4" lg for "Orbit" motor	2	2
100	336-38000	Nut 7/16" NC	4	4
101	110-20811	Hydraulic motor support	1	1
102	130-29491	Guard	1	1
103	9688	Compression spring	1	1
104	300-38250	Bolt 7/16" NC x 1" lg + nylon locknut & flat washer 3/8"	3	3

SNOWBLOWER P-922

SEE UPPER AUGER COMPONENTS
ON PAGE 50

170-05831



SNOWBLOWER P-922 (cont'd)

REF.	PART #	DESCRIPTION	QTY
1	140-00812	Reversible scraper blade 1/2" x 4" x 84 1/2" lg.....	1
2	319-38310	Flow bolt 7/16" NCx 1 1/2" lg+ nut & lock washer	9
3	9285	Key 1/2" x 1/2" x 4" lg.....	1
4	300-38250	Bolt 7/16" NCx 1" lg+ nylon locknut & flat washer 3/8"	3
5	110-04531	Skid shoe (right side)	1
6	8112	Lock pin 1/4"	2
7	140-03361	Skid shoes lock	2
8	302-46580	Bolt 3/4" NF x 6" lg+ nylon locknut	2
9	9462	Storage support	1
10	300-44310	Bolt 5/8" NCx 1 1/2" lg+ lock washer	8
11	8220	Storage support pin	1
12	9307	Gear box T-279	1
13	Std.	Hitch pin dip 5/32"	1
14	9428	Adjustment plate for gear box + 4 nuts 1/2" NC.....	1
15	140-05592	3-points side bar	2
16	110-15214	Right lower hitch	1
17	302-46610	Bolt 3/4" NF x 6 1/2" lg+ nylon locknut	2
18	9269	Pin category 2	2
19	9225-EG	P.T.O shaft T80	1
19	9475	P.T.O shaft T90	opt.
20	110-15213	Left lower hitch	1
21	300-38310	Bolt 7/16" X 1 1/2" lg+ two-way locknut	4
22	110-15421	Upper hitch.....	1
23	6467	Splined adaptor 1 3/4" - 20 (welded)	1
24	110-18252	Auger drive shaft 34 3/16" lg overall (includes no. 23 and 30) (up to serial # 35730).....	1
24	110-18253	Auger drive shaft 34 3/16" lg overall (includes no. 23 and 30) (from serial # 35731 and up).....	1
25	300-54490	Bolt 1 1/4" NCx 4" lg+ nylon locknut	1
26	300-34310	Bolt 5/16" NCx 1 1/2" lg grade 5+ nylon locknut (up to serial # 35730).....	1
26	300-34340	Bolt 5/16" NCx 2" lg grade 5+ nylon locknut (from serial # 35731 and up).....	1
27	MLH-315	"Orbit" hydraulic motor + cushion valve	opt.
27	MLH-250	"Orbit" hydraulic motor + cushion valve	opt.
28	110-18242	Sprocket #80 + shearplate (includes no. 29, 30 and 67) (up to serial # 35730).....	1
28	110-18243	Sprocket #80 + shearplate (includes no. 29, 30 and 67) (from serial # 35731 and up).....	1
29	160-06901	Aluminium bronze bushing 1 3/4" i.d. x 2" o.d. x 1/2" lg.....	1
30	Std.	Grease fitting 1/4"-28 straight	8
31	300-36280	Bolt 3/8" NCx 1 1/4" lg+ lock washer	2
32	110-04521	Skid shoe (left side)	1
33	190-00431	Chain # 80 x 79" lg.....	1
33	26A80	Connecting link no. 80	1
33	59-80	Offset link no.80	1
34	120-08071	Frame P922	1
35	150-00332	Idler drive pin.....	1
36	9287	Idler sprocket # 80.....	2
37	160-06511	Spacer 3/4" i.d. x 1 1/4" o.d. x 3/4" lg	2
38	110-01052	Idler	1
39	110-01063	Threaded rod for idler adjustment + nut 7/16" NC.....	1
40	110-01071	Threaded tube for idler adjustment	1
41	9688	Compression spring	1
42	302-46400	Bolt 3/4" NCx 3" lg (soudé)+ nylon locknut	4
43	110-10564	Chain guard	1
44	300-38250	Bolt 7/16" NCx 1" lg+ nylon locknut	2
45	130-29491	Guard	1
46	376-44000	Flat washer 5/8"	1

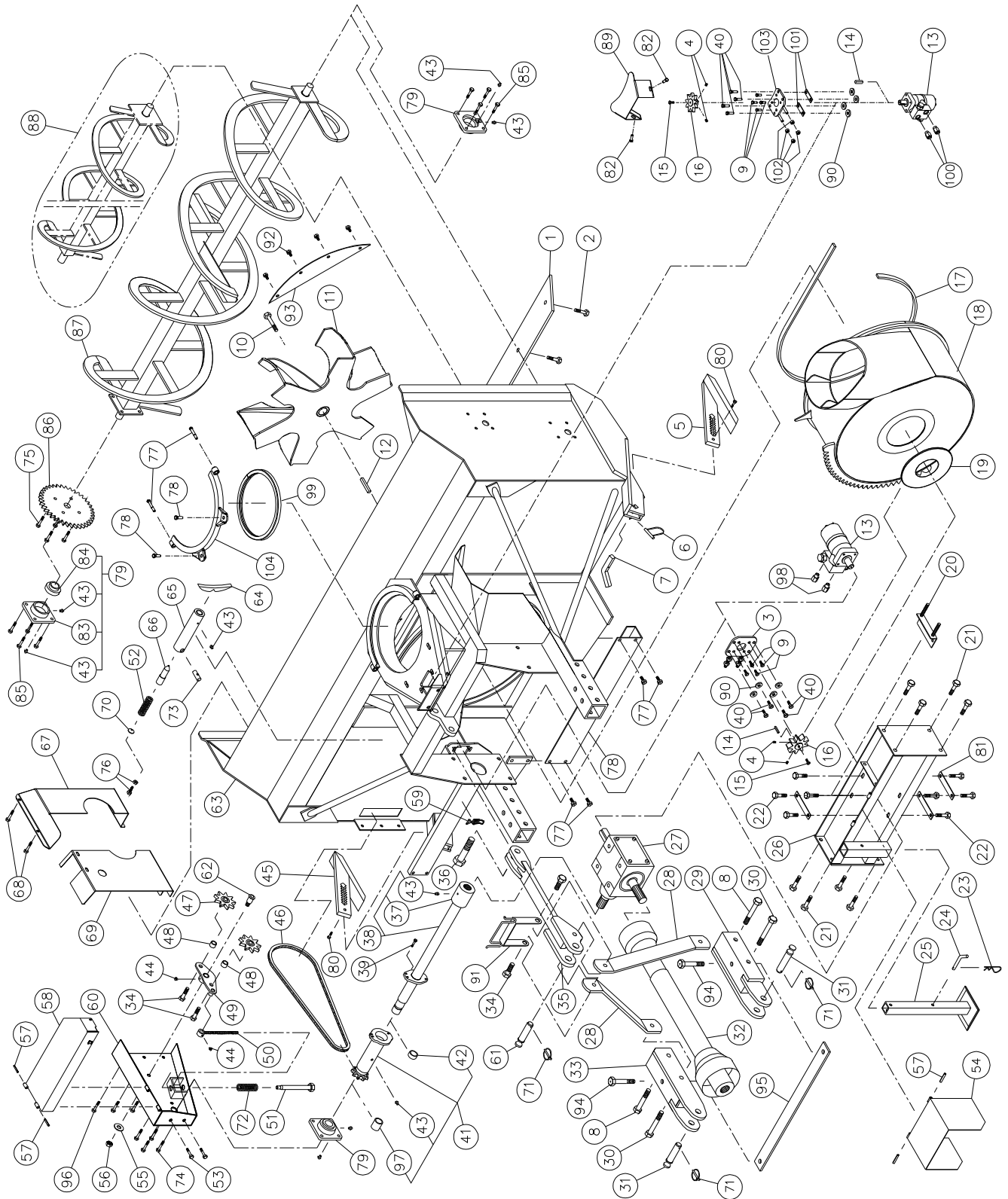
SNOWBLOWER P-922 (cont'd)

REF.	PART #	DESCRIPTION	QTY
47	346-45000	Nylon locknut 5/8" NC thin	1
48	Std.	Roll pin 5/16" x 2" lg	4
49	8374	Adjustable clamp fastener (welded)	1
50	110-46801	Garde de l'arbre de côté	1
51	130-87391	Inside guard (welded)	1
52	300-36250	Bolt 3/8" NC x 1" lg + nylon locknut and lock washer	4
53	130-85171	Inside guard (welded)	1
54	Std.	Lynch pin 1/4" x 1 3/4"	3
55	110-15201	Hoses support	1
56	300-32310	Bolt 1/4" NC x 1 1/2" lg + nylon locknut	2
57	150-05961	Pin category 2 (top link)	1
58	110-12541	Hinged P.T.O. shroud	1
59	Std.	Grease fitting 1/4"-28 90 deg.	2
60	301-38280	Bolt 7/16" NC x 1 1/4" lg + nylon locknut	4
61	130-05911	Deflector	1
62	302-46550	Bolt 3/4" NF x 5 1/2" lg + nylon locknut	2
63	140-03561	Brace	1
64	8228	Impeller cap screw 5/8" NC x 1 1/2" lg (ass. with lock-tite 242) + lock washer	1
65	140-10761	Back plate	3
66	UCFD208-24	Bearing 1 1/2" + flange & 2 straight grease fitting	3
67	160-07311	Bushing 1 1/2" i.d. x 1 7/8" o.d. x 1 1/4"lg	1
68	300-40310	Bolt 1/2"NC x 1 1/2"lg + nylon locknut & flat washer 7/16"	4
69	110-32482	Rotor 34" ø - 6 palettes	1
70	FD208	Flange 208 for 2 grease fitting	3
71	UC208-24	Bearing 1 1/2" UC208-24	3
72	302-40325	Bolt 1/2" NC x 1 3/4" lg + nylon locknut & flat washer 7/16"	8
73	9281	Sprocket 80A30 T 1 1/2" ø	1
74	110-02061	Main auger P-992	1
75	VS2-992	Upper auger P-992 (see page 50)	opt.
76	8369	Key for "Orbit" motor	1
77	300-32220	Bolt 1/4"NC x 3/4"lg + lock washer	1
78	323-36160	Hexagonal socket set screw 3/8" NC x 3/8"	2
79	300-36250	Bolt 3/8"NC x 1" lg + lock washer	4
80	336-38000	Nut 7/16" NC	4
81	110-44331	Sprocket 9 tooth	1
82	300-38310	Bolt 7/16"NC x 1 1/2" lg + nylon locknut	4
83	110-20811	Hydraulic motor support	1
84	140-09571	Spacer 1/8" X 1" X 3 1/4" lg	2
85	150-12741	Flat washer 7/16" heavy-duty	4
86	RSP-1/16x100RB	Kit of 2 unidirectional restrictors	opt.
87	300-38400	Bolt 7/16" NC x 3" lg + nylon locknut	2
88	8149	U-shaped UHMW approx. 14" interior diameter	1
89	110-01341	Retaining bracket	1
90	300-40310	Bolt 1/2" NC x 1 1/2" lg + nylon locknut	2

SNOWBLOWER P-922TRC

SEE UPPER AUGER COMPONENTS
ON PAGE 50

170-05841



SNOWBLOWER P-922TRC (cont'd)

RÉF.	PART #	DESCRIPTION	QTY
1	140-00812	Reversible scraper blade 1/2" x 4" x 84 1/2" lg.....	1
2	319-38310	Flow bdt 7/16" NCx 1 1/2" lg+ écrou & lock washer	9
3	110-18441	"Orbit" motor support + 4 nuts 7/16" NC.....	1
4	323-36160	Hexagonal socket set screw 3/8" NCx 3/8" lg.....	4
5	110-04531	Skid shoe(right side)	1
6	8112	Lock pin 1/4"	2
7	140-03361	Skid shoes lock	2
8	302-46580	Bdt 3/4" NFx 6" lg+ nylon lockut	2
9	300-36250	Bdt 3/8" NCx 1" lg+ lock washer	8
10	300-44310	Bdt 5/8" NCx 1 1/2" lg (ass. with lock-tite 242) + lock washer	1
11	110-32482	Impeller 34" ø6 blades	1
12	9285	Key 1/2" x 1/2" x 4" lg	1
13	MLH250	"Orbit" motor + cushion valve	opt.
13	MLH315	"Orbit" motor + cushion valve	opt.
14	8369	Key for "Orbit" motor	opt.
15	300-32220	Bdt 1/4" NCx 3/4" lg+ lock washer	1
16	110-44331	Sprocket 9 tooth.....	1
17	9430	Ushaped UHMW 3/8" x 7/8" x 109 1/4" lg.....	1
18	110-31871	Rotary drum 34" ø x 12" depth	1
19	9432	UHMW flat washer 3/16" x 8 5/8" i.d. x 12" o.d.	1
20	9428	Adjustment plate for gear box+ 4 nuts 1/2" NC.....	1
21	300-46340	Bdt 3/4" NCx 2" lg+ nylon lockut	8
22	300-44310	Bdt 5/8" NCx 1 1/2" lg+ lock washer	8
23	Std.	Htch pin dip 5/32"	1
24	8220	Storage support pin	1
25	9462	Storage support	1
26	110-31951	Gear box support	1
27	9307	Gear box T-279	1
28	140-05592	3-points side bar	2
29	110-15214	Right lower hitch	1
30	302-46610	Bdt 3/4" NFx 6 1/2" lg+ nylon lockut	2
31	9269	Pin category 2	2
32	9225-EG	P.T.O shaft T80	1
32	9475	P.T.O shaft T90	opt.
33	110-15213	Left lower hitch	1
34	302-46400	Bdt 3/4" NCx 3" lg + nylon lockut	4
35	110-15531	Upper hitch	1
36	300-54460	Bdt 1 1/4" NCx 4" lg + nylon lockut	1
37	6467	Splined adaptor 1 3/4" - 20 spliness (welded)	1
38	110-18252	Auger drive shaft 34 3/16" lg overall (includes no. 37 and 43) (up to serial # 35730)	1
38	110-18253	Auger drive shaft 34 3/16" lg overall (includes no. 37 and 43) (from serial # 35731 and up)	1
39	300-34310	Bdt 5/16" NCx 1 1/2" lg grade 5+ nylon lockut (up to serial # 35730).....	1
39	300-34340	Bdt 5/16" NCx 2" lg grade 5+ nylon lockut (from serial # 35731 and up)	1
40	300-38310	Bdt 7/16" NCx 1 1/2" lg+ nylon lockut	8
41	110-18242	Sprocket #80 + shearplate (includes no 42, 43 and 97) (up to serial # 35730)	1
41	110-18243	Sprocket #80 + shearplate (includes no 42, 43 and 97) (from serial # 35731 and up)	1
42	160-06901	Bushing 1 3/4" i.d. x 2" o.d. x 1/2" lg.....	1
43	Std.	Grease fitting 1/4"-28 straight	9
44	Std.	Grease fitting 1/4"-28 90 deg.	2
45	110-04521	Skid shoe(left side).....	1
46	190-00431	Chain #80 x 79" lg.....	1
46	26A80	Connecting link #80	1
47	9287	Roue à dents du tendeur de chaîne #80	2
48	160-06511	Spacer 3/4" i.d. x 1 1/4" o.d. x 3/4" lg.....	2
49	110-01052	Ider	1

SNOWBLOWER P-922TRC (cont'd)

REF.	PART #	DESCRIPTION	QTY
50	110-01063	Threaded rod for idler adjustment + nut 7/16" NC	1
51	110-01071	Threaded tube for idler adjustment	1
52	9473	Compression spring	1
53	300-38250	Bolt 7/16" NC x 1" lg + nylon locknut	2
54	110-12541	Hinged P.T.O. shroud	1
55	376-44000	Flat washer 5/8"	1
56	346-45000	Nylon locknut 5/8" NC thin	1
57	Std.	Roll pin 5/16" x 2" lg	4
58	110-21011	Side shaft guard	1
59	8374	Adjustable clamp fastener (welded)	1
60	110-10564	Chain guard	1
61	150-05961	Pin category 2 (top link)	1
62	150-00332	Idler clevis pin	1
63	120-08011	Frame P-922TRC	1
64	130-08441	Stop block for drum lock (welded on drum)	1
65	160-03952	Body - drum lock (welded on drum)	1
66	150-01542	Latch pin - drum lock	1
67	130-85171	Inside guard (bolted)	1
68	300-36250	Bolt 3/8" NC x 1" lg + nylon locknut 2 flat washer 13/32" i.d. x 13/16" o.d.	4
69	130-87391	Inside guard (welded)	1
70	130-08471	Washer	1
71	Std.	Lynch pin 1/4" X 1 3/4"	3
72	9688	Compression spring	1
73	150-02561	Pin	1
74	300-40310	Bolt 1/2" NC x 1 1/2" lg + nylon locknut thin and flat washer 7/16"	4
75	300-38310	Bolt 7/16" NC x 1 1/2" lg + two-way locknut	12
76	300-38340	Bolt 7/16" NC x 2" lg (full length thread) + lock nut	1
77	300-38400	Bolt 7/16" NC x 3" lg + nylon locknut	2
78	300-40310	Bolt 1/2" NC x 1 1/2" lg + nylon locknut	2
79	UCFD208-24	Bearing 1 1/2" + flange and 2 grease fitting	3
80	300-32310	Bolt 1/4" NC x 1 1/2" lg + nylon locknut	2
81	140-10761	Back plate	3
82	300-34280	Bolt 7/16" NC x 1 1/4" lg + flat washer + nylon locknut	2
83	FD208	Flange 208 and 2 grease fitting	3
84	UC208-24	Bearing 1 1/2"	3
85	300-40325	Bolt 1/2" NC x 1 3/4" lg + nylon locknut and flat washer 7/16"	8
86	9281	Sprocket 80A30 T 1 1/2" ø	1
87	110-02061	Main auger	1
88	VS2-992	Upper auger P-992 (see page 50)	opt.
89	130-29491	Guard	1
90	150-12741	Flat washer 7/16" heavy-duty	8
91	110-15201	Hoses support	1
92	300-38280	Bolt 7/16" NC x 1 1/4" lg + nylon locknut	4
93	130-05911	Deflector	1
94	302-46550	Bolt 3/4" NF x 5 1/2" lg + nylon locknut	2
95	140-03561	Brace	1
96	300-38250	Bolt 7/16" NC x 1" lg + nylon locknut and flat washer 3/8"	3
97	160-07311	Bushing 1 1/2" i.d. x 1 7/8" o.d. x 1 1/4" lg	1
98	RSP-1/16x100RB	Kit of 2 unidirectional restrictors	opt.
99	8149	U-shaped UHMW approx. 14" interior dia.	1
100	RSP-1/16x100RB	Kit of 2 unidirectional restrictors	opt.
101	140-09571	Spacer 1/8" x 1" x 3 1/4" lg for hydraulic motor	2
102	336-38000	Nut 7/16" NC	8
103	110-20811	Hydraulic motor support	1
104	110-01341	Retaining bracket	1

SNOWBLOWER P-98134 (cont'd)

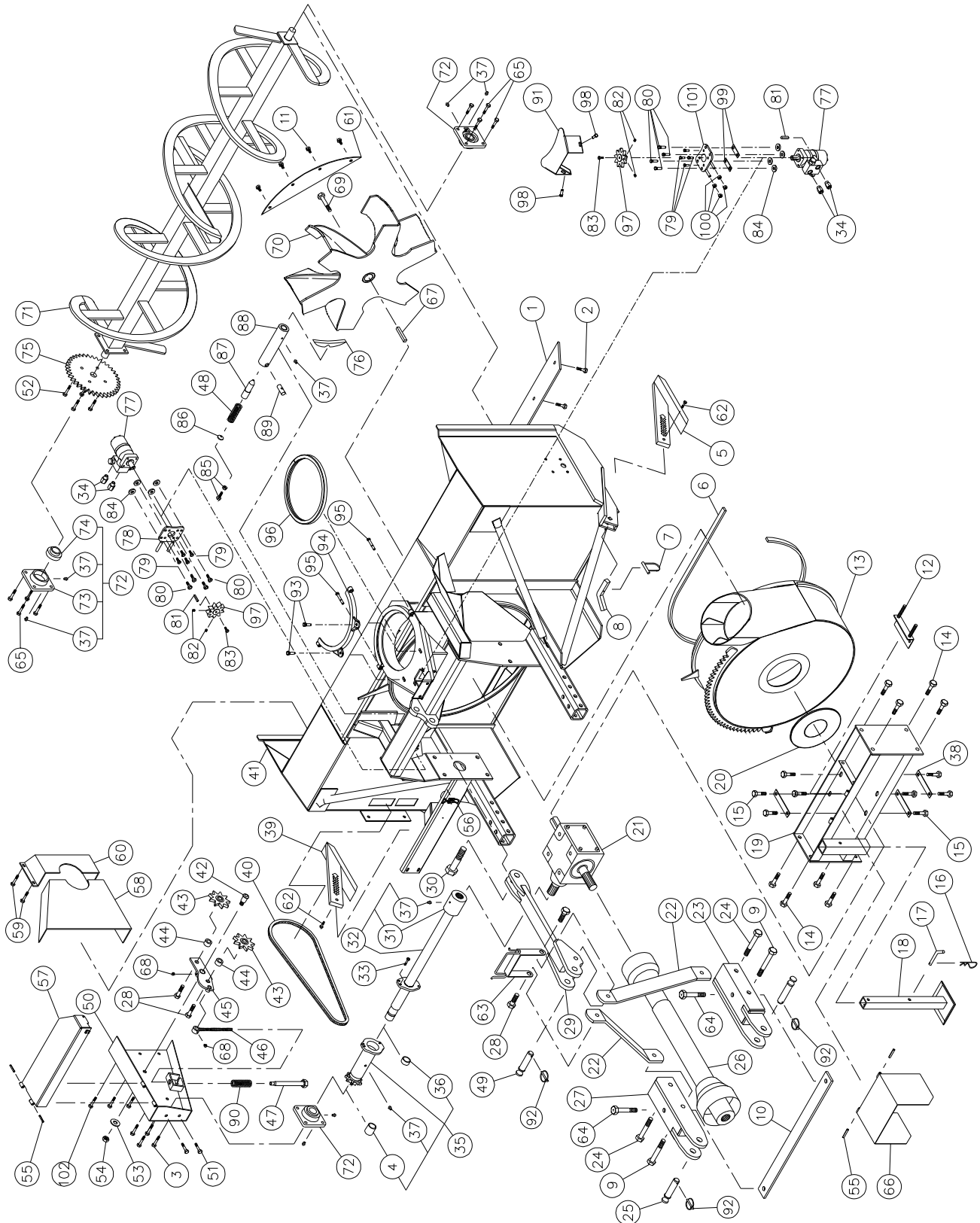
REF.	PART #	DESCRIPTION	QTY
1	140-00832	Reversible scraper blade 1/2" x 4" x 90 1/2" lg	1
2	319-38310	Plow bolt 7/16" NC x 11/2" lg + nut & lock washer	9
3	140-10761	Back plate	3
4	302-46550	Bolt 3/4" NF x 5 1/2" lg + nylon locknut	2
5	110-04531	Skid shoe (right side)	1
6	8112	Lock pin 1/4"	2
7	140-03361	Skid shoes lock	2
8	302-46610	Bolt 3/4" NF x 6 1/2" lg + nylon locknut	2
9	9462	Storage support	1
10	300-44310	Bolt 5/8" NC x 1 1/2" lg + lock washer	8
11	8220	Storage support pin	1
12	9307	Gear box	1
13	Std.	Hitch pin clip 5/32"	1
14	9428	Adjustment plate for gear box + 4 nuts 1/2" NC	1
15	140-05592	3-points side bar	2
16	110-15214	Right lower hitch	1
17	160-06901	Aluminium-bronze bushing 1 3/4" i.d. x 2" o.d. x 1/2" lg	1
18	9269	Pin category 2 (1 1/8" diameter)	2
19	9225	PTO shaft T80	1
20	110-15213	Left lower hitch	1
21	300-46400	Bolt 3/4" NC x 3" lg welded + nylon locknut	4
22	110-15421	Upper hitch	1
23	6467	Splined adaptor 1 3/4"-20 (welded)	1
24	110-18262	Auger drive shaft 37 7/16" lg overall (incl. # 23 and 30) (up to serial # 35730)	1
24	110-18263	Auger drive shaft 37 7/16" lg overall (incl. # 23 and 30) (from serial # 35731 and up)	1
25	300-54460	Bolt 1 1/4" NC x 4" lg + nylon locknut	1
26	300-34310	Bolt 5/16" NC x 1 1/2" lg grade 5 + nylon locknut (up to serial # 35730)	1
26	300-34340	Bolt 5/16" NC x 2" lg grade 5 + nylon locknut (from serial # 35731 and up)	1
27	RSP-1/16 x 10 ORB	Kit of 2 unidirectional restrictors	opt.
28	110-18242	Sprocket #80 + shearplate (incl. # 17 & 29) (up to serial # 35730)	1
28	110-18243	Sprocket #80 + shearplate (incl. # 17 & 29) (from serial # 35731 and up)	1
29	160-07311	Aluminium-bronze bushing 1 1/2" i.d. x 1 7/8" o.d. x 1 1/4" lg	1
30	Std.	Grease fitting 1/4"-28 straight	8
31	300-40310	Bolt 1/2" NC x 1 1/2" lg + nylon locknut thin & flat washer 7/16"	4
32	110-04521	Skid shoe (left side)	1
33	190-00431	Chain no. 80 x 79" lg (79 links)	1
33	26A80	Connecting link no. 80	1
33	59-80	Offset link no. 80 (if required)	1
34	120-05802	Frame P-98134	1
35	150-00332	Idler clevis pin	1
36	9287	Idler sprocket #80 (steel)	2
37	160-06511	Spacer 3/4" i.d. x 1 1/4" o.d. x 3/4" lg	2
38	110-01052	Idler	1
39	110-01063	Threaded rod for idler adjustment + nut 7/16" NC	1
40	110-01071	Threaded rtube for idler adjustment	1
41	9688	Compression spring	1
42	150-05961	Pin category 2 (1" diameter) (top link)	1
43	110-10564	Chain guard	1
44	300-38250	Bolt 7/16" NC x 1" lg + nylon locknut	2
45	300-38310	Bolt 7/16" NC x 1 1/2" lg + two-way locknut	4
46	376-44000	Rondelle plate 5/8"	1
47	346-45000	Flat washer 5/8" NC thin	1
48	Std.	Roll pin 5/16" x 2" lg	2
49	8375	Adjustable clamp fastener (welded)	1
50	110-32671	Side shaft guard	1
51	130-53792	Inside guard (welded)	1
52	300-36250	Bolt 3/8" NC x 1" lg + nylon locknut & flat washer	4

SNOWBLOWER P-98134 (cont'd)

REF.	PART #	DESCRIPTION	QTY
53	8925	Inside guard (bolted)	1
54	140-03561	Brace 3/8" x 2 1/2" x 42 1/4" lg	1
55	300-38280	Bolt 7/16" NC x 1 1/4" lg + nylon locknut	4
56	130-05911	Deflector	1
57	302-46580	Bolt 3/4" NF x 6" lg + nylon locknut	2
58	110-12541	Hinged PTO shroud	1
59	300-40325	Bolt 1/2" NC x 1 3/4" lg + nylon locknut & flat washer 7/16"	8
60	300-32310	Bolt 1/4" NC x 1 1/2" lg + nylon locknut	2
61	110-15201	Hoses support	1
62	9285	Key 1/2" x 1/2" x 4" lg	1
63	Std.	Grease fitting 1/4" - 28 90 deg.	2
64	300-44310	Bolt 5/8" NC x 1 1/2" lg (ass. with lock-tite 242) + lock washer	1
65	110-32482	Impeller 34" ø 6 blades	1
66	UCFD208-24	Bearing 1 1/2" + flange + 2 straight grease fitting	3
67	FD208	Flange for 2 grease fitting	3
68	UC208-24	Bearing 1 1/2"	3
69	9281	Sprocket 80A30 T 1 1/2" ø	1
70	110-05171	Auger	1
71	Std.	Lynch pin 1/4" x 1 3/4"	3
72	300-40310	Bolt 1/2" NC x 1 1/2" lg. + nylon locknut & flat washer	2
73	110-01341	Retaining bracket	1
74	300-38400	Bolt 7/16" NC x 3" lg. + nylon locknut	2
75	8149	U-shaped UHMW approx. 14" interior diameter	1
76	MLH 250	"Orbit" hydraulic motor + cushion valve	opt.
76	MLH 315	"Orbit" hydraulic motor + cushion valve	opt.
77	8369	Key for hydraulic motor	opt.
78	140-09571	Spacer 1/8" x 1" x 3 1/4" lg for hydraulic motor	2
79	336-38000	Nut 7/16" NC	4
80	110-20811	Hydraulic motor support	1
81	300-38310	Bolt 7/16" NC x 1 1/2" lg + nylon locknut & flat washer	4
82	300-36250	Bolt 3/8" NC x 1" lg + lock washer	4
83	323-36160	Hexagonal socket set screw 3/8" NC x 3/8" lg	2
84	110-44331	Sprocket 9 teeth	1
85	300-32220	Bolt 1/4" NC x 3/4" lg + lock washer	1
86	300-36280	Bolt 3/8" NC x 1 1/4" lg + lock washer	2
87	130-29491	Hydraulic motor guard	1
88	300-38250	Bolt 7/16" NC x 1" lg + nylon locknut & flat washer 3/8"	3
89	150-12741	Flat washer 7/16" heavy-duty	4

SNOWBLOWER P-98134TRC

170-04243



10

SNOWBLOWER P-98134TRC (cont'd)

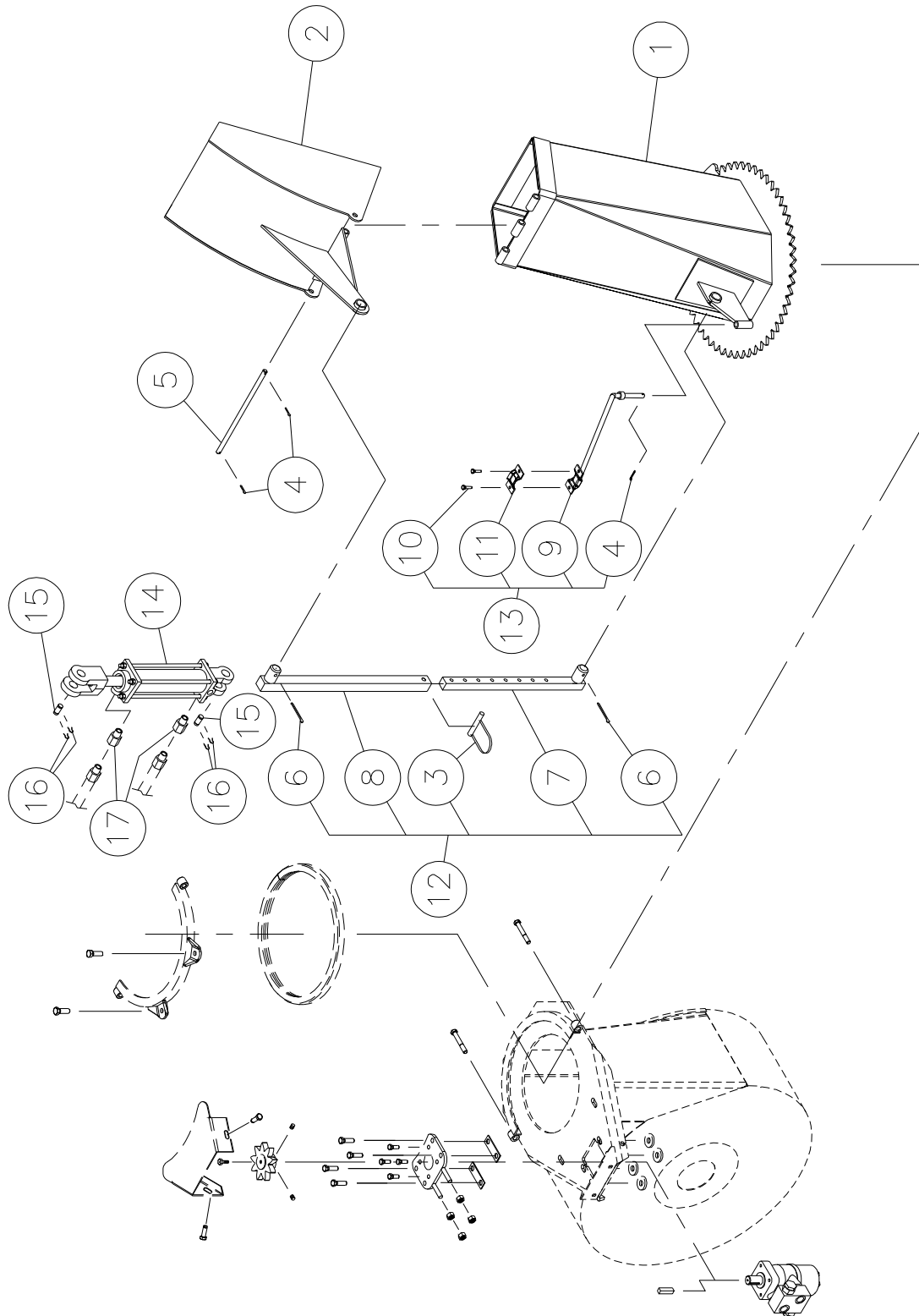
REF.	PART #	DESCRIPTION	QTY
1	140-00832	Reversible scraper blade 1/2" x 4" x 90 1/2" lg	1
2	319-38310	Plow bolt 7/16" NC x 1 1/2" lg + nut & lock washer	9
3	300-40310	Bolt 1/2" NC x 1 1/2" lg + nylon locknut mince & flat washer 7/16"	4
4	160-07311	Aluminium-bronze bushing 1 1/2" i.d. x 1 7/8" o.d. x 1 1/4" lg	1
5	110-04531	Skid shoe (right side)	1
6	9430	U-shaped UHMW 3/8" x 7/8" x 109 1/4" lg	1
7	8112	Lock pin 1/4"	2
8	140-03361	Skid shoes lock	2
9	302-46610	Bolt 3/4" NF x 6 1/2" lg + nylon locknut	2
10	140-03561	Brace 3/8" x 2 1/2" x 42 1/4" lg	1
11	300-38280	Bolt 7/16" NC x 1 1/4" lg + nylon locknut	4
12	9428	Adjustment plate for gear box + 6 nuts 1/2" NC	1
13	110-31871	Rotary drum 34" ø x 12" depth	1
14	300-46340	Bolt 3/4" NC x 2" lg + nylon locknut	8
15	300-44310	Bolt 5/8" NC x 1 1/2" lg + lock washer	8
16	Std.	Hitch pin clip 5/32"	1
17	8220	Storage support pin	1
18	9462	Storage support	1
19	110-31951	Gear box support	1
20	9432	U-shaped UHMW 3/16" x 8 7/8" i.d. x 12" o.d.	1
21	9307	Gear box	1
22	140-05592	3-points side bar	2
23	110-15214	Right lower hitch	1
24	302-46580	Bolt 3/4" NF x 6" lg + nylon locknut	2
25	9269	Pin category 2 (1 1/8" diameter)	2
26	9225	PTO T80	1
27	110-15213	Left lower hitch	1
28	300-46400	Bolt 3/4" NC x 3" lg (welded) + nylon locknut	4
29	110-15531	Upper hitch	1
30	300-54460	Bolt 1 1/4" NC x 4" lg + nylon locknut	1
31	6467	Splined adaptor 1 3/4" - 20 (welded)	1
32	110-18262	Auger drive shaft 37 3/16" lg overall (incl. # 31 and 37) (up to serial # 35730)	1
32	110-18263	Auger drive shaft 37 3/16" lg overall (incl. # 31 and 37) (from serial # 35731 and up)	1
33	300-34310	Bolt 5/16" NC grade 5 x 1 1/2" lg + nylon locknut (up to serial # 35730)	1
33	300-34340	Bolt 5/16" NC grade 5 x 2" lg + nylon locknut (from serial # 35731 and up)	1
34	RSP-1/16 x 10 ORB	Kit of 2 unidirectional restrictors	opt.
35	110-18242	Sprocket #80 + shearplate (incl. # 4, 36 & 37) (up to serial # 35730)	1
35	110-18243	Sprocket #80 + shearplate (incl. # 4, 36 & 37) (from serial # 35731 and up)	1
36	160-06901	Aluminium-bronze bushing 1 3/4" d.i. x 2" d.e. x 1/2" lg	1
37	Std.	Grease fitting 1/4"-28 straight	9
38	140-10761	Back plate	3
39	110-04521	Skid shoe (left side)	1
40	190-00431	Chain no. 80 x 79" lg	1
40	26A80	Connecting link no. 80	1
40	59-80	Offset link no. 80 (if required)	1
41	120-05822	Frame P-98134TRC	1
42	150-00332	Idler clevis pin	1
43	9287	Idler sprocket #80	2
44	160-06511	Spacer 3/4" i.d. x 1 1/4" o.d. x 3/4" lg	2
45	110-01052	Idler	1
46	110-01063	Threaded rod for idler adjustment + nut 7/16" NC	1
47	110-01071	Threaded tube for idler adjustment	1
48	9473	Compression spring (black)	1
49	150-05961	Pin category 2 (1" diameter) (top link)	1
50	110-10564	Chain guard	1
51	300-38250	Bolt 7/16" NC x 1" lg + nylon locknut	2

SNOWBLOWER P-98134TRC (cont'd)

REF.	PART #	DESCRIPTION	QTY
52	300-38310	Bolt 7/16" NC x 1 1/2" lg + two-way locknut	4
53	376-40000	Flat washer 5/8"	1
54	346-45000	Nylon locknut 5/8" NC thin	1
55	Std.	Roll pin 5/16" x 2" lg	4
56	8374	Adjustable clamp fastener (welded)	1
57	110-32131	Side shaft guard for P-98134TRC	1
58	130-53792	Glnside guard (bolted)	1
59	300-36250	Bolt 3/8" NC x 1" lg + nylon locknut & flat washer	4
60	8925	Garde intérieur (bolted)	1
61	130-05911	Deflector	1
62	300-32310	Bolt 1/4" x 1 1/2" lg + nylon locknut	2
63	110-15201	Hoses support	1
64	302-46520	Bolt 3/4" NF x 5 1/2" lg + nylon locknut	2
65	300-40325	Bolt 1/2" NC x 1 3/4" lg + nylon locknut & flat washer 7/16"	8
66	110-12541	Hinged PTO shroud	1
67	9285	Key 1/2" x 1/2" x 4" lg	1
68	Std.	Grease fitting 1/4"-28 90 deg.	2
69	300-44310	Bolt 5/8" NC x 1 1/2" lg (ass. with lock-tite 242) + lock washer	1
70	110-32482	Impeller 34" ø 6 blades	1
71	110-05171	Auger P-920-98	1
72	UCFD208-24	Bearing 1 1/2" + flange 2 straight grease fitting	3
73	FD208	Flange for 2 grease fitting	3
74	UC208-24	Bearing 1 1/2"	3
75	9281	Sprocket 80A30 T 1 1/2" ø	1
76	130-08441	Stop block for drum lock (welded on drum)	1
77	MLH-250	Hydraulic motor "Orbit" + cushion valve	opt.
77	MLH-315	Hydraulic motor "Orbit" + cushion valve	opt.
78	110-18441	"Orbit" support motor + 4 nuts 7/16" NC	1
79	300-36250	Bolt 3/8" x 1" lg + lock washer	4
80	300-38310	Bolt 7/16" NC x 1 1/2" lg + nylon locknut & flat washer	4
81	8369	Key for "Orbit" motor	opt.
82	323-36160	Hexagonal socket set screw 3/8" NC x 3/8" lg	4
83	300-32220	Bolt 1/4" NC x 3/4" lg + lock washer	2
84	150-12741	Flat washer 7/16" heavy-duty	8
85	300-38341	Bolt 7/16" NC x 12" lg (full length thread) + lock nut	1
86	130-08471	Washer	1
87	150-01542	Latch pin - drum lock	1
88	160-03952	Body - drum lock (welded on frame)	1
89	150-02561	Pin	1
90	9688	Compression spring	1
91	130-29491	Hydraulic motor guard	1
92	Std.	Lynch pin 1/4" x 1 3/4"	3
93	300-40310	Bolt 1/2" NC x 1 1/2" lg + nylon locknut & flat washer	2
94	110-01341	Retaining bracket	1
95	300-38400	Bolt 7/16" NC x 3" lg + nylon locknut	2
96	8149	U-shaped UHMW approx. 14" interior diameter	1
97	110-44331	Sprocket 9 teeth	2
98	300-36280	Bolt 3/8" NC x 1 1/4" lg + lock washer	2
99	140-09571	Spacer 1/8" x 1" x 3 1/4" lg for hydraulic motor	2
100	336-38000	Nut 7/16" NC	8
101	110-20811	Hydraulic motor support	1
102	300-38250	Bolt 7/16" NC x 1" lg + nylon locknut & flat washer 3/8"	2

CHUTE CST-7486

170-03271R1

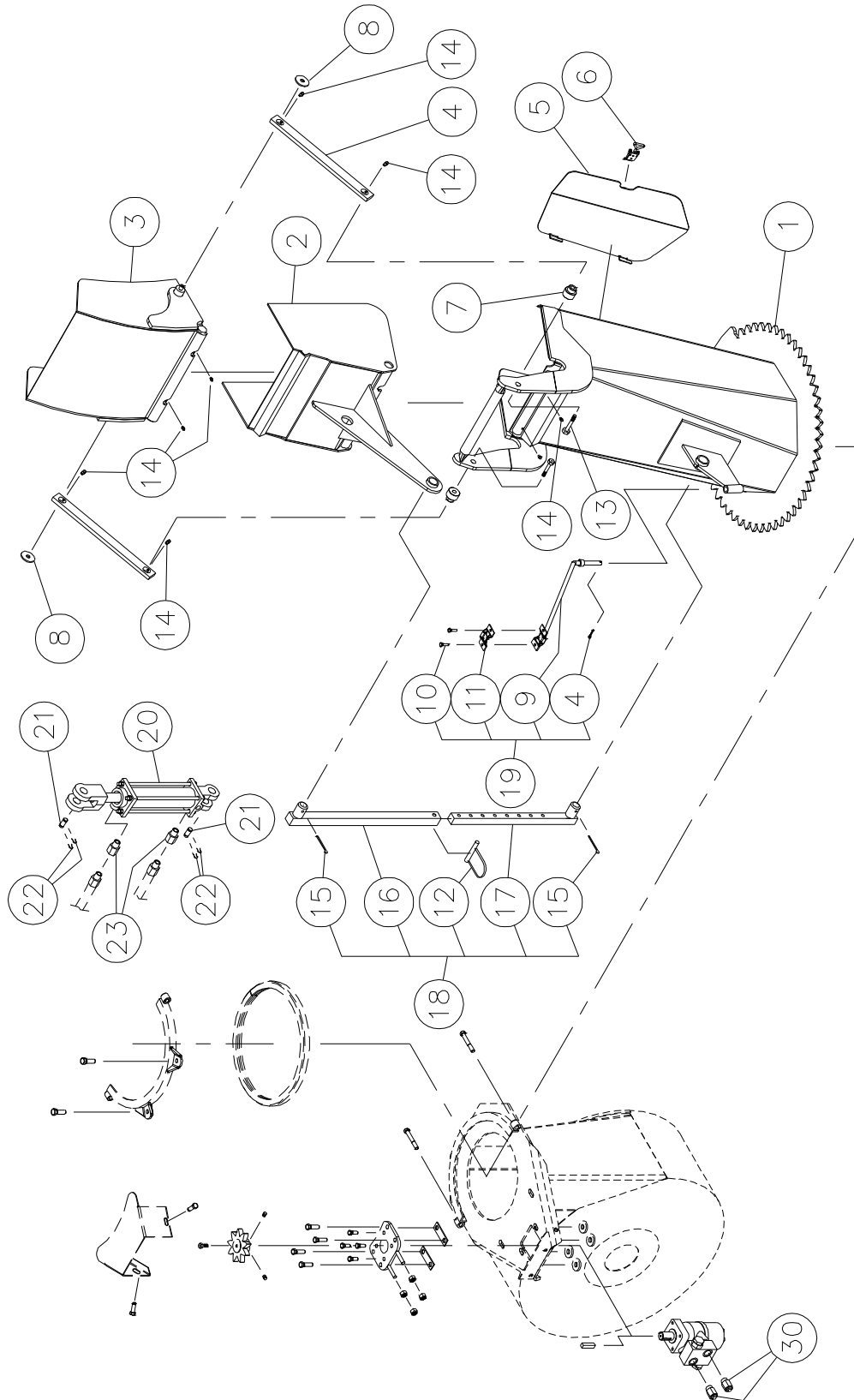


CHUTE CST-7486

REF.	PART #	DESCRIPTION	QTY
1	110-04401	Chute base	1
2	8370	Chute deflector	1
3	8112	Lock pin 1/4" (1)	opt.
4	Std.	Cotter pin 1/8" x 1" lg	3
5	8210	Chute deflector pin	1
6	Std.	Cotter pin 5/32" x 2" lg (2)	opt.
7	8145	Chute adjusting rod (1)	opt.
8	8146	Chute adjusting tube (1)	opt.
9	110-01112	Mounting support plate	1
10	300-32250	Bolt 1/4" NC x 1" lg. + nylon locknut	2
11	140-13071	Hoses mounting plate	1
12	T-74104	Manual telescopic tube	opt.
13	TSB-74104	Hose support for deflector cylinder	opt.
14	25TR08	Cylinder	opt.
15	6004	Clevis pin 1" x 3 1/8" lg (2)	opt.
16	Std.	Hairpin cotter 7/8" (4)	opt.
17	RSP-1/16 x 06 NPT	Kit of 2 unidirectional restrictors	opt.
17	RSP-1/16 x 08 NPT	Kit of 2 unidirectional restrictors	opt.

SEMI-INDUSTRIAL CHUTE PSIG-7486

170-03393R2

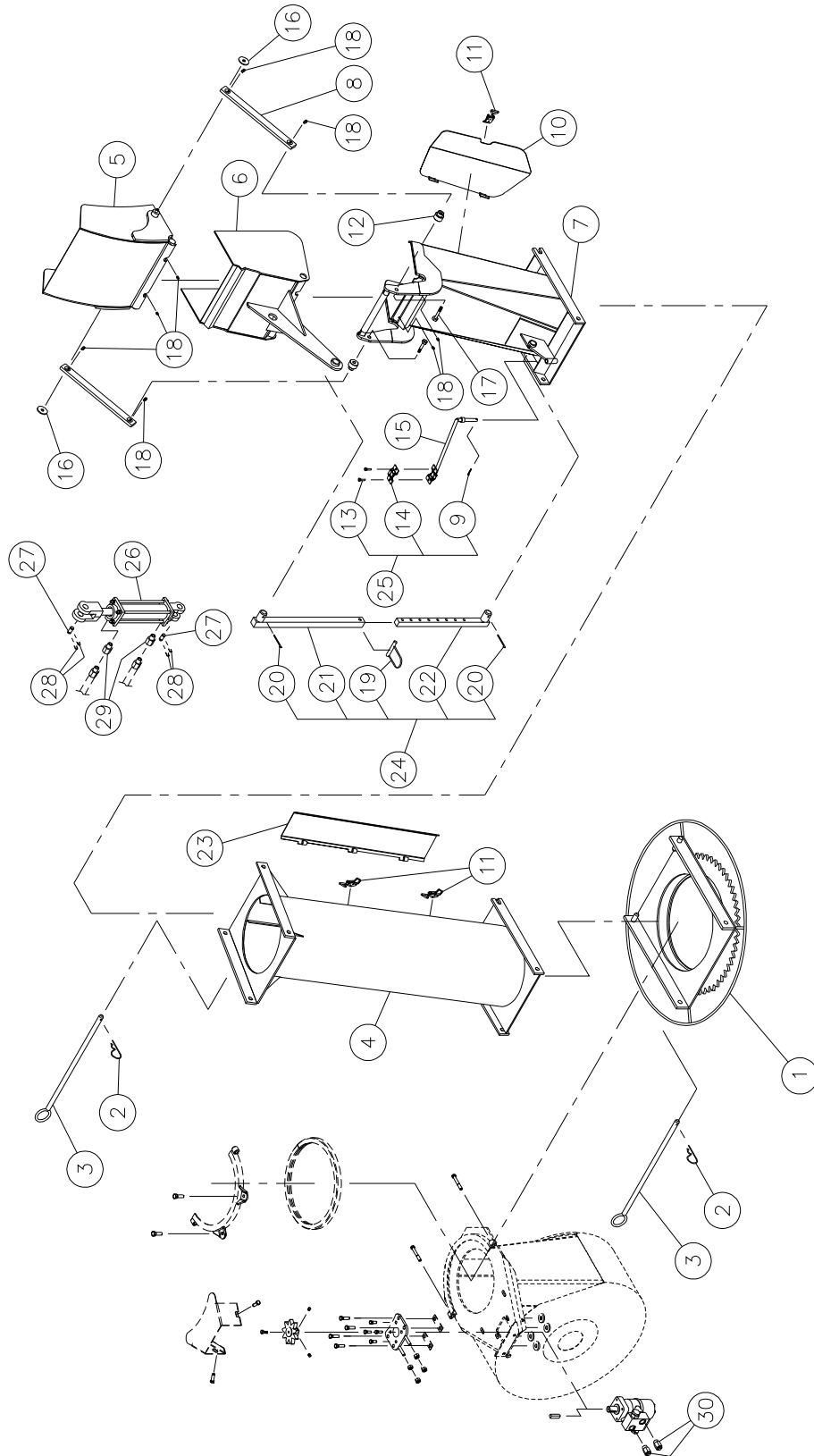


SEMI-INDUSTRIAL CHUTE PSIG-7486

REF.	PART #	DESCRIPTION	QTY
1	110-45361	Chute base	1
2	110-22521	Lower chute deflector	1
3	110-22511	Upper chute deflector	1
4	140-14041	Connecting rod	2
5	110-45611	Access panel	1
6	8376	Adjustable clamp fastener (welded)	1
7	150-05311	Spacer for connecting rod	2
8	378-36500	Washer	2
9	110-01112	Hoses support	1
10	300-32250	Bolt 1/4" NC x 1" lg + nylon locknut	2
11	140-13071	Hose hold down	1
12	8112	Lock pin 1/4" (1)	opt.
13	300-40380	Bolt 1/2" NC x 2 3/4" lg + nylon lock nut & washer	2
14	Std.	Grease firtting 1/4"-28 straight	8
15	Std.	Cotter pin 5/32" x 2" lg (2)	opt.
16	8146	Chute adjusting tube (1)	opt.
17	8145	Chute adjusting rod (1)	opt.
18	T-74104	Manual telescopic tube	opt.
19	TSB-74104	Hose support for deflector cylinder	opt.
20	25TR08	Cylinder	opt.
21	6004	Clevis pin 1" x 3 1/8" lg (2)	opt.
22	Std.	Hairpin cotter 7/8" (4)	opt.
23	RSP-1/16 x 06 NPT	Kit of 2 unidirectional restrictors	opt.
23	RSP-1/16 x 08 NPT	Kit of 2 unidirectional restrictors	opt.

INDUSTRIAL CHUTE PCG-7486

170-03415

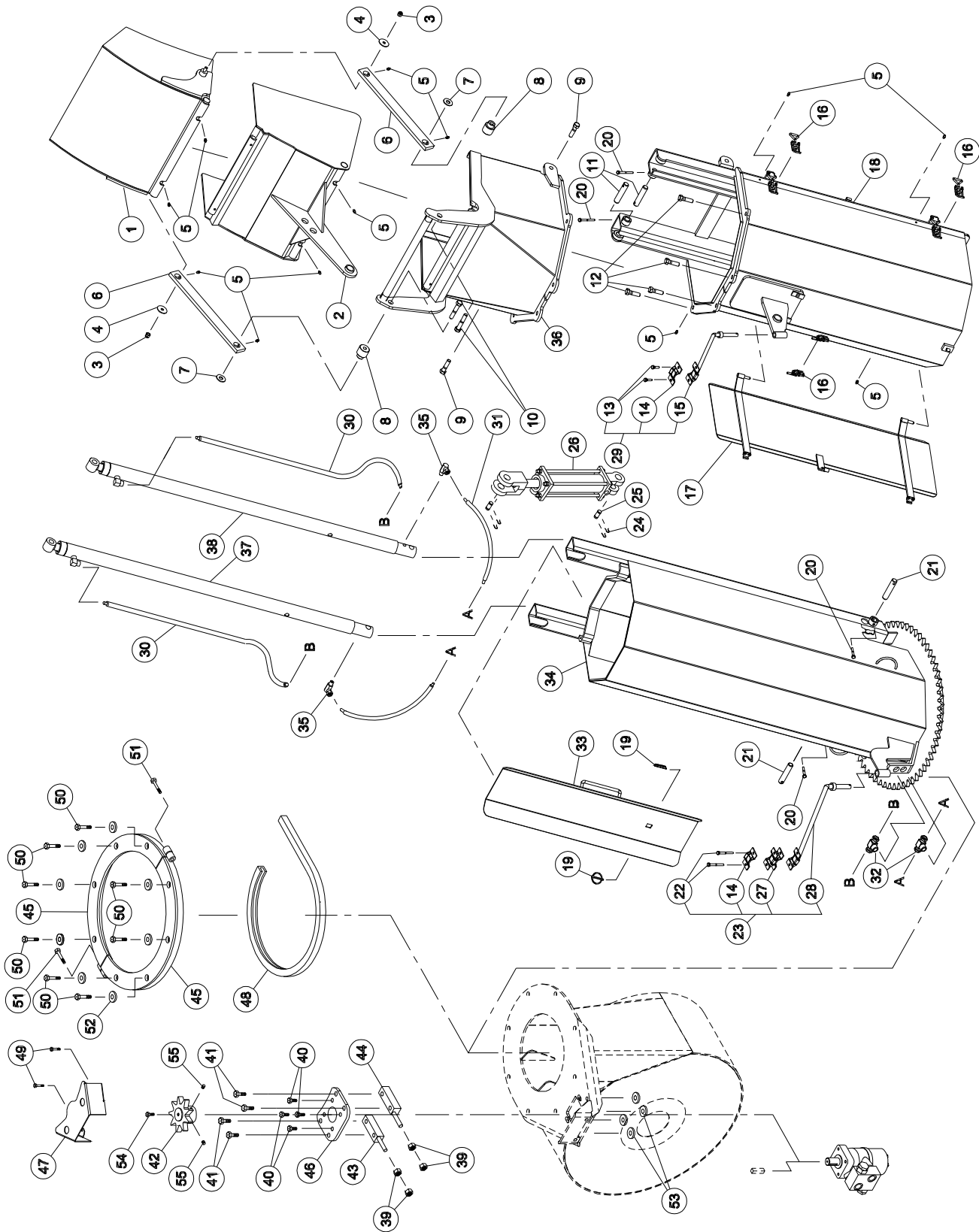


INDUSTRIAL CHUTE PCG-7486

REF.	PART #	DESCRIPTION	QTY
1	110-04441	Chute adaptor with quick attach	1
2	Std.	Hitch pin clip 5/32"	2
3	8200	Pin for quick attach (adaptor & extension)	2
4	110-22961	Extension 48" PRP-7486	opt.
4	110-23051	Extension 24" PRP-7486-2	opt.
5	110-22511	Upper deflector	1
6	110-22521	Lower deflector	1
7	110-22563	Chute base	1
8	140-14041	Connection rod	2
9	Std.	Cotter pin 1/8" x 1" lg	1
10	110-45611	Access panel	1
11	8376	Adjustable clamp fastener (welded)	1
12	150-05311	Spacer for connectiong rod	2
13	300-32250	Bolt 1/4" NC x 1" lg. + nylon locknut	2
14	140-13071	Hoses mounting plate	1
15	110-01112	Mounting support plate	1
16	378-36500	Washer	2
17	300-40380	Bolt 1/2" NC x 2 3/4" lg + nulon locknut & washer	2
18	Std.	Grease fitting 1/4"-28 straight	8
19	8112	Lock pin 1/4" (1)	opt.
20	Std.	Cotter pin 5/32" X 2" lg (2)	opt.
21	8146	Chute adjusting tube (1)	opt.
22	8145	Chute adjusting rod (1)	opt.
23	110-23022	Access panel for extension PRP-7486	opt.
23	110-23062	Access panel for extension PRP-7486-2	opt.
24	T-74104	Manual telescopic tube	opt.
25	TSB-74104	Hose support for deflector cylinder	opt.
26	25TR08	Cylinder	opt.
27	6004	Clevis pin 1" x 3 1/8" lg (2)	opt.
28	Std.	Hairpin cotter 7/8" (4)	opt.
29	RSP-1/16 x 06 NPT	Kit of 2 unidirectional restrictors	opt.
29	RSP-1/16 x 08 NPT	Kit of 2 unidirectional restrictors	opt.
30	RSP-1/16 x 10 ORB	Kit of 2 unidirectional restrictors	1

INDUSTRIAL CHUTE PCT-7486-HDB

170-05213

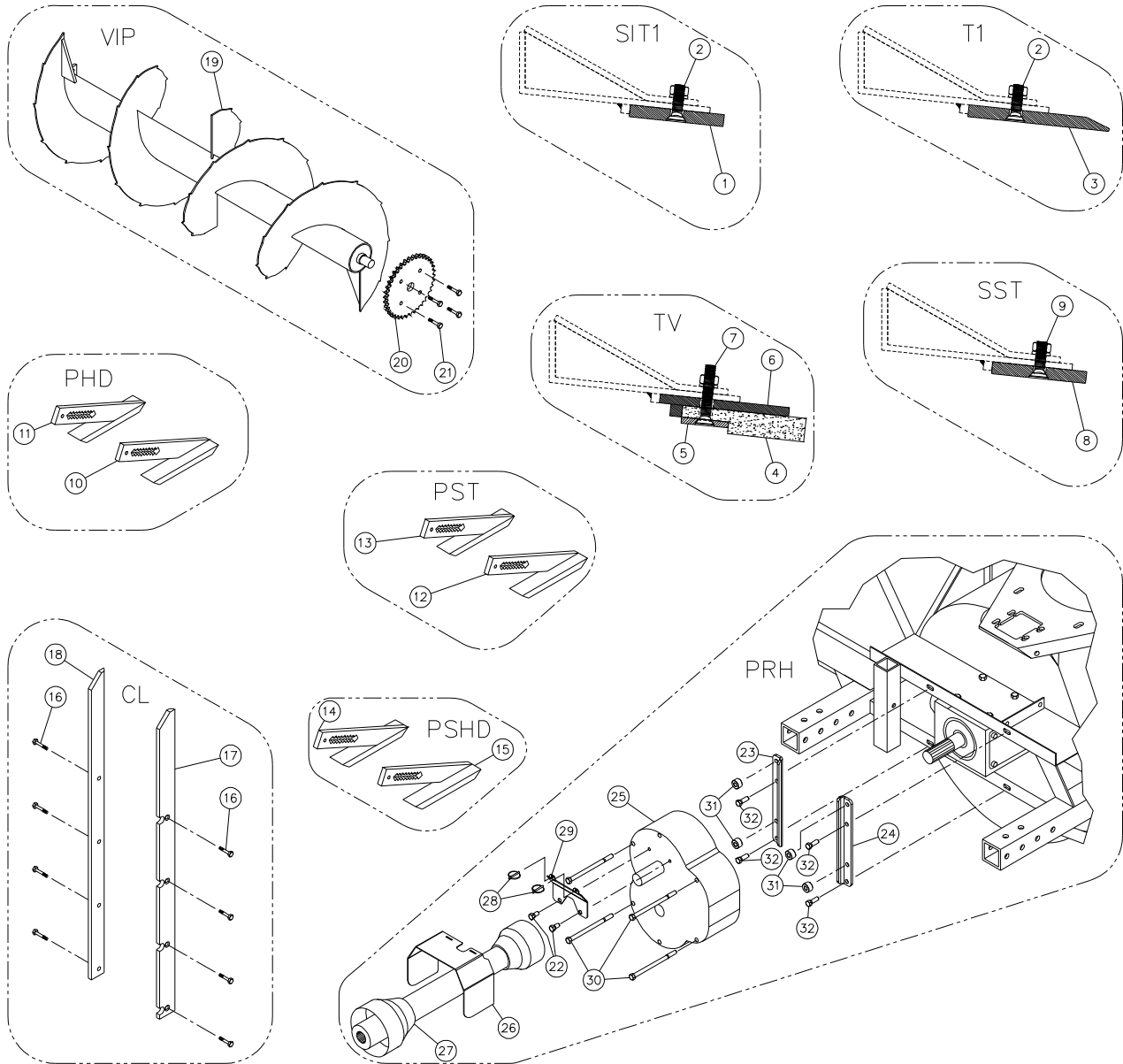


INDUSTRIAL CHUTE PCT-7486-HDB

REF.	PART #	DESCRIPTION	QTY
1	110-41801	Upper chute deflector	1
2	110-41781	Lower chute deflector	1
3	346-36000	Nylon locknut 3/8"	2
4	378-36500	Washer 3/8" i.d. x 1 1/2" o.d.	2
5	Std.	Grease fitting 1/4"-28 straight	12
6	140-13931	Connecting rod	2
7	378-37500	Washer 1/2" i.d. x 1 3/8" o.d.	2
8	150-05311	Spacer for connecting rod	2
9	300-40340	Bolt 1/2" NC x 2" lg + nylon locknut	2
10	300-40400	Bolt 1/2" NC x 3" lg + nylon locknut	2
11	150-13181	Pin for cylinder	2
12	300-40325	Bolt 1/2" NC x 1 3/4" lg + nylon locknut	4
13	300-32250	Bolt 1/4" NC x 1" lg + nylon locknut	2
14	140-13071	Hoses mounting plate	2
15	110-01122	Mounting support plate for upper extension	1
16	8376	Clamp fastener	3
17	110-41731	Access door for upper extension	1
18	110-41721	Upper extension	1
19	Std.	Lynch pin 3/16" x 1 1/4"	2
20	300-32325	Bolt 1/4" NC x 1 3/4" lg + nylon locknut	4
21	150-12701	Pin for cylinder	2
22	300-32370	Bolt 1/4" NC x 2 1/2" lg + nylon locknut	2
23	TSB-74104-IND	Hoss support on chute base	1
24	Std.	Hairpin cotter 7/8" (4)	1
25	6004	Clevis pin 1" x 3 1/8" lg (2)	opt.
26	25TR08	Cylinder	1
27	110-20611	Hoses mounting plate	1
28	110-04982	Mounting support plate for lower extension	1
29	TSB-74104	Hoses support for deflector cylinder	1
30	190-08231	Hose 1/4" SAE 100R2AT - 500 PSI x 63 1/2" lg	2
31	190-08241	Hose 1/4" SAE 100R2AT - 500 PSI x 20 1/2" lg	2
32	9456-06-06	"T" female 3/8" NPT swivel, female 3/8" NPT	2
33	110-41701	Access door for lower extension	1
34	110-41712	Lower extension	1
35	9406-04-04	Elbow 90 degrees 1/4" NPT swivel	2
36	110-41771	Hexagonal extension	1
37	15 PC 32G	Cylinder 1 1/2" x 32" stroke	1
38	15 PC 32D	Cylinder 1 1/2" x 32" stroke	1
39	336-38000	Nut 7/16" NC	4
40	300-36250	Bolt 3/8" NC x 1" lg + lock washer	4
41	300-38385	Bolt 7/16" NC x 2 3/4" lg + lock washer	4
42	110-36731	Sprocket 9 tooth	1
43	110-38322	Left spacer	1
44	110-38321	Right spacer	1
45	110-48041	Retaining bracket	2
46	130-08152	"Orbit" motor support	1
47	130-14282	Guard	1
48	190-13631	Antifriction ring for chute	1
49	300-36280	Bolt 3/8" NC x 1 1/4" + nylon locknut	2
50	300-40415	Bolt 1/2" NC x 3 1/4" + nylon locknut	8
51	300-38400	Bolt 7/16" NC x 3" + nylon locknut	2
52	150-12731	Flat washer 1/2" heavy-duty	16
53	150-12741	Flat washer 7/16" heavy-duty	4
54	300-32220	Bolt 1/4" NC x 3/4" lg + lock washer	1
55	323-36160	Hexagonal socket set screw 3/8" NC x 3/8" lg	2

OPTIONS

170-02843



OPTIONS

REF.	PART #	DESCRIPTION	P-920	P-920 TRC	P-920-98	P-920TRC-98	P-922	P-922TRC	P-98134	P-98134TRC
SIT1										
1	140-04081	Scraper blade (hard. steel, not sharpened, reversible) 1/2" x 4" x 84½"	1	1	-	-	1	1	-	-
1	140-04091	Scraper blade (hard. steel, not sharpened, reversible) 1/2" x 4" x 90½"	-	-	1	1	-	-	1	1
2	319-38310	Plow bolt 7/16" NC x 1 1/2" lg + nut & lock washer	9	9	9	9	9	9	9	9
T1										
2	319-38310	Plow bolt 7/16" NC x 1 1/2" lg + nut & lock washer	9	9	9	9	9	9	9	9
3	140-04141	Scraper blade (hardened steel, sharpened, not reversible) 1/2" x 6" x 84½"	1	1	-	-	1	1	-	-
3	140-04151	Scraper blade (hardened steel, sharpened, not reversible) 1/2" x 6" x 90½"	-	-	1	1	-	-	1	1
TV										
4	190-01331	Scraper blade, TIVAR not reversible 1" x 5 1/4" x 84 1/2"	1	1	-	-	1	1	-	-
4	190-01321	Scraper blade, TIVAR not reversible 1" x 5 1/4" x 90 1/2"	-	-	1	1	-	-	1	1
5	140-03991	TIVAR blade bolting plate 1/4" x 2" x 84 1/2"	1	1	-	-	1	1	-	-
5	140-03981	TIVAR blade bolting plate 1/4" x 2" x 90 1/2"	-	-	1	1	-	-	1	1
6	110-10391	TIVAR blade holder 3/8" x 5 1/2" x 84 1/2"	1	1	-	-	1	1	-	-
6	110-10381	TIVAR blade holder 3/8" x 5 1/2" x 90 1/2"	-	-	1	1	1	1	1	1
7	319-38355	Plow bolt 7/16" NC x 2 1/4" lg + nut & lock washer	9	9	9	9	9	9	9	9
SST										
8	140-15041	Scraper blade (stainless steel, not sharpened, reversible) 1/2" x 4" x 84½"	1	1	-	-	1	1	-	-
8	140-15051	Scraper blade (stainless steel, not sharpened, reversible) 1/2" x 4" x 90½"	-	-	1	1	-	-	1	1
9	333-40310	Hexagonal socket set screw 1/2" NC x 1 1/2" lg (inox.) + nut & lock washer	opt.	opt.	opt.	opt.	opt.	opt.	opt.	opt.
9	319-38310	Plow bolt 7/16" NC x 1 1/2" lg+ nut & lock washer	9	9	9	9	9	9	9	9
PHD										
10	110-05511	Carbon steel skid shoe (right side)	1	1	1	1	1	1	1	1
11	110-04811	Carbon steel skid shoe (left side)	1	1	1	1	1	1	1	1
PST										
12	110-24831	Stainless steel skid shoe (right side)	1	1	1	1	1	1	1	1
13	110-24832	Stainless steel skid shoe (left side)	1	1	1	1	1	1	1	1
PSHD										
14	110-45771	Skid shoe with Rocktec sole (left side)	1	1	1	1	1	1	1	1
15	110-45772	Skid shoe with Rocktec sole (right side)	1	1	1	1	1	1	1	1
CL										
16	319-38310	Plow bolt 7/16" NC x 1½" lg + nut & lock washer	8	8	8	8	8	8	8	8
17	130-08323	Lateral blade (right side)	1	1	1	1	-	-	1	1
17	130-08301	Lateral blade (right side)	-	-	-	-	1	1	-	-
18	130-08324	Lateral blade (left side)	1	1	1	1	-	-	1	1
18	130-08302	Lateral blade (left side)	-	-	-	-	1	1	-	-
VIP										
19	110-45861	Full flight spiked auger 23" dia. x 89 5/8"	1	1	-	-	1	1	-	-
19	110-21131	Full flight spiked auger 23" dia. x 95 5/8" hors tout	-	-	1	1	-	-	1	1
20	9281	Sprocket 80A30T 1 1/2"	1	1	1	1	1	1	1	1
21	300-38310	Bolt 7/16" NC x 1 1/2" lg + two way locknut	4	4	4	4	4	4	4	4
PRH										

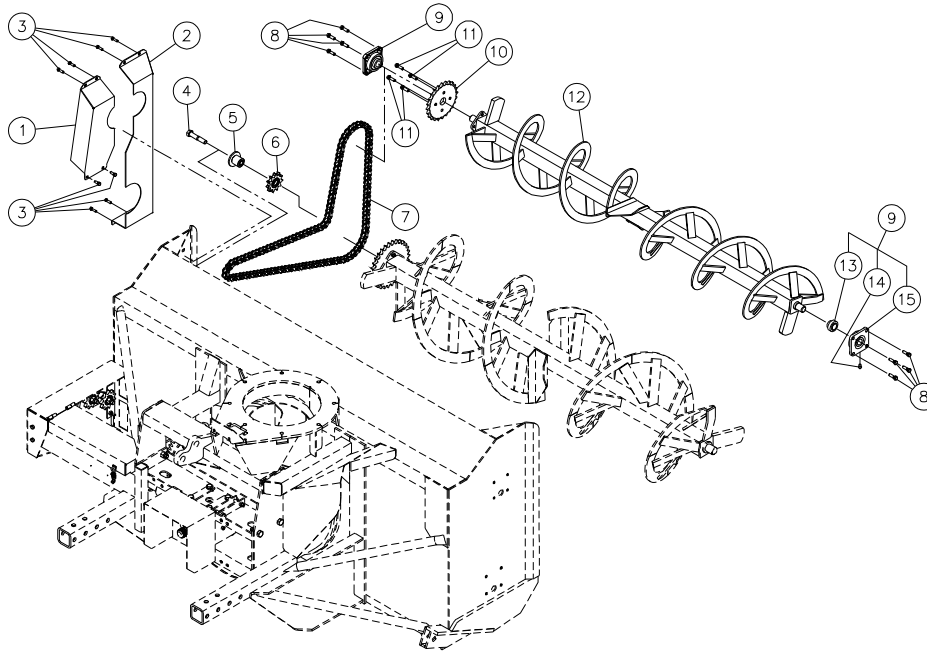
See next page

OPTIONS

REF.	PART #	DESCRIPTION	P-920	P-920 TRC	P-920-98	P-920TRC-98	P-922	P-922TRC	P-98134	P-98134TRC
PRH										
22	300-40250	Bolt 1/2" NC x 1" lg + lock washer	2	2	2	2	2	2	2	2
23	130-84911	Mounting plate for speed reducer	1	1	1	1	1	1	1	1
24	130-84912	Mounting plate for speed reducer	1	1	1	1	1	1	1	1
25	9769	Speed reducer 1000@540 with gears PRH-30M-2	1	1	1	1	1	1	1	1
26	130-67491	PTO shroud for speed reducer 1000@540	1	1	1	1	1	1	1	1
27	9569	P.T.O. T80, QD 1 3/8" -21 splines, SBI 1 3/4"-20	1	1	1	1	1	1	1	1
27	9569-1	P.T.O. T80, QD 1 3/4"-20 splines, SBI 1 3/4"-20	1	1	1	1	1	1	1	1
27	9475-1	P.T.O. T90, QD 1 3/8"-21 splines, SBI 1 3/4"-20	1	1	1	1	1	1	1	1
27	9475-2	P.T.O. T90, QD 1 3/4"-20 splines, SBI 1 3/4"-20	1	1	1	1	1	1	1	1
28	Std.	Lynch pin 1/4" x 3/4" lg	2	2	2	2	2	2	2	2
29	130-84951	Mounting plate for PTO shroud	1	1	1	1	1	1	1	1
30	300-40700	Bolt 1/2" NC x 8" lg + nylon locknut	4	4	4	4	4	4	4	4
31	150-14941	Spacer 1/2" dia. x 3/4" lg	4	4	4	4	4	4	4	4
32	300-40310	Bolt 1/2" NC x 1 1/2" lg + nylon locknut & flat washer (x)	4	4	4	4	4	4	4	4

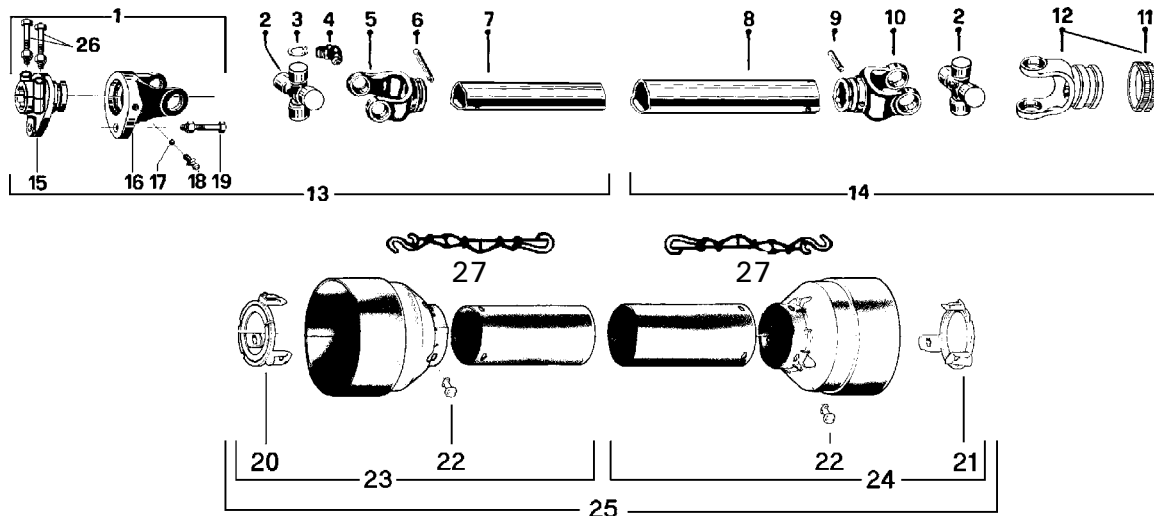
UPPER AUGER VS2-992

170-03455



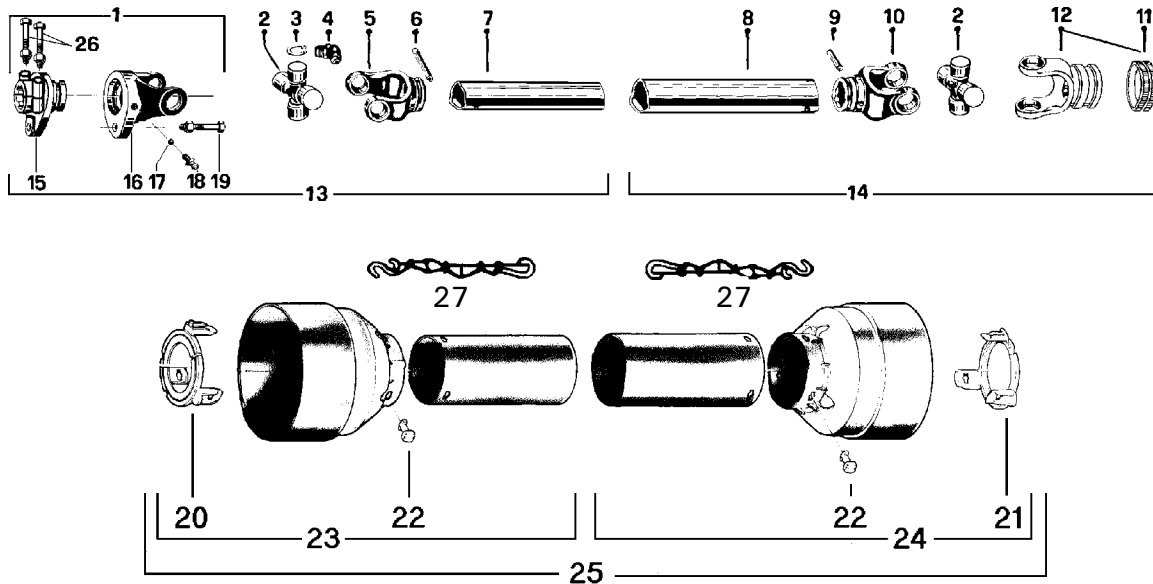
REF.	PART #	DESCRIPTION	QTY
1	110-46191	Inside guard (bolted)	1
2	110-46171	Double inside guard (bolted)	1
3	300-36250	Bolt 3/8" NC x 1" lg. + flat washer + nylon locknut	8
4	300-46460	Bolt 3/4" NC x 4" lg. + flat washer + nylon locknut	1
5	110-43711	Idler	1
6	9791	Idler sprocket #80	1
7	110-45912	Chain #80 x 115" lg	1
7	26A80	Connecting link no. 80	1
7	59-80	Offset link no.80 (if required)	1
8	300-38310	Bolt 7/16" NC x 1 1/2" l. + flat washer 3/8" + nylon locknut	8
9	UCFD207-20	Bearing 1 1/4" + flange & 2 grease fittings (straight)	2
10	190-13081	Sprocket 80A24 T1 1/2"	1
11	300-38310	Bolt 7/16" NC x 1 1/2" lg. + two-way locknut	4
12	110-45711	Upper auger P-992	1
13	UC-207-20	Bearing 1 1/4"	2
14	Std.	Grease fitting 1/4"-28 straight	4
15	FD207	Flange for 2 grease fitting	2

P.T.O. SHAFT # 9225-EG & 9569 (T80)



REF.	PART #	DESCRIPTION	QTY	
			9225-EG	9569
or [1	9570	Safety shear yoke M10 (2 bolts) 1 3/4" - 20 splines	-	1
1	9453	Safety shear yoke M12 (2 bolts) 1 3/4" - 20 splines	1	1
2	9208	U-joint + 4 retaining rings + 1 grease fitting	2	2
3	9454	Retaining ring	8	8
4	8110	Grease fitting	2	2
5	9214	Yoke for inner tube	1	1
6	8075	Stopper for inner tube	1	1
7	9212	Inner tube	1	1
8	9211	Outer tube	1	1
9	9210-E	Stopper for outer tube	1	1
10	9209	Yoke for outer tube	1	1
11	8363	Collar kit	1	1
11	8364	Collar kit	-	opt.
12	9455	Yoke with hole 1 3/8"-6 splines + yoke stopper	1	-
12	9463	Yoke with hole 1 3/8"-21 splines + yoke stopper	-	1
12	9224	Yoke with hole 1 3/4"-20 splines + yoke stopper	-	opt.
13	9456	P.T.O. section, SBI 1 3/4"-20, inner part, with protector	1	1
14	9457	P.T.O. section, QD 1 3/8"-6, outer part, with protector	1	-
14	9457-2	P.T.O. section, QD 1 3/8"-21, outer part, with protector	-	1
or [15	9458	Adaptor 1 3/4"-20 splines (2 bolts) (hole 12 mm)	1	1
15	9571	Adaptor 1 3/4"-20 splines (2 bolts) (hole 10 mm)	-	1
or [16	9204	Yoke and shearplate (hole 12 mm)	1	1
16	9572	Yoke and shearplate (hole 10 mm)	-	1
17	9205	Ball	17	17
18	8071	Grease fitting	1	1
19	9207	Safety shear bolt M12 x 65 mm	1	-
or [19	9207-375	Safety shear bolt M12 x 65 mm diam. 3/8"	-	1
19	8218	Safety shear bolt M10 x 60 mm	-	1
20	9459	Bearing ring for inner guard tube	1	1
21	9460	Bearing ring for outer guard tube	1	1
22	8109	Stopper	6	6
23	9221	Inner shield	1	1
24	9220	Outer shield	1	1
25	9222	Complete shield	1	1
26	9662	Bolt M16 x 80mm + lock nut	2	2
27	8308	Safety chain	2	2

P.T.O. SHAFT # 9475, 9475-1 & 9475-2 (T90)

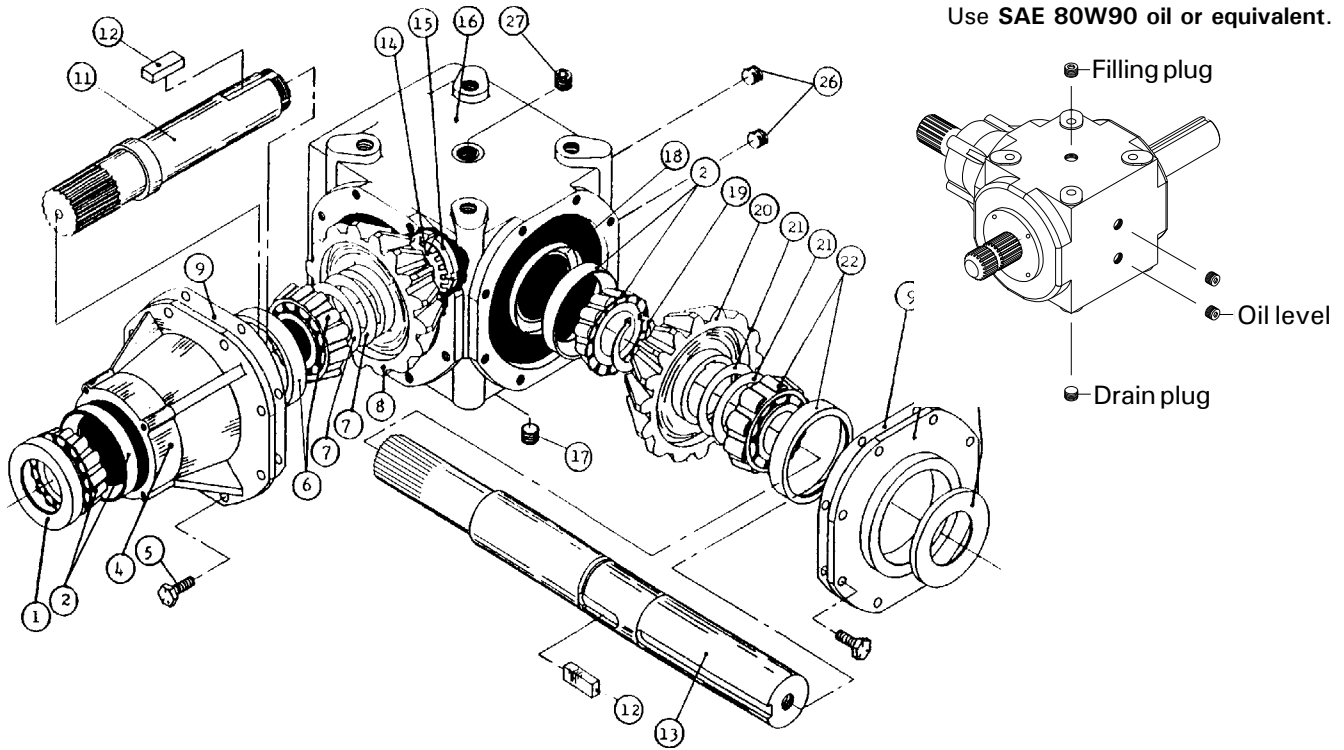


REF.	PART #	DESCRIPTION	QTY		
			9475	9475-1	9475-2
1	9476	Safety shear yoke (2 bolts) 1 3/4" - 20 splines	1	1	1
2	9477	U-joint + 4 retaining rings + 1 grease fitting	2	2	2
3	9478	Retaining ring	8	8	8
4	8110	Grease fitting	2	2	2
5	9479	Yoke for inner tube	1	1	1
6	9210	Stopper for tube	1	1	1
7	9212	Inner tube	1	1	1
8	9211	Outer tube	1	1	1
9	9210	Stopper for tube	1	1	1
10	9480	Yoke for outer tube	1	1	1
11	8363	Collar kit	1	1	-
11	8364	Collar kit	-	-	1
12	9481	Yoke with hole 1 3/8"-6 splines + yoke stopper	1	-	-
12	9482	Yoke with hole 1 3/8"-21 splines + yoke stopper	-	1	-
12	9483	Yoke with hole 1 3/4"-20 splines + yoke stopper	-	-	1
13	9484	P.T.O. section, SBI 1 3/4"-20, inner part, with protector	1	1	1
14	9485	P.T.O. section, QD 1 3/8"-6, outer part, with protector	1	-	-
14	9485-1	P.T.O. section, QD 1 3/8"-21, outer part, with protector	-	1	-
14	9485-2	P.T.O. section, QD 1 3/4"-20, outer part, with protector	-	-	1
15	9486	Adaptor 1 3/4"-20 splines (2 bolts)	1	1	1
16	9487	Yoke and shearplate	1	1	1
17	9205	Ball	24	24	24
18	8071	Grease fitting	1	1	1
19	9207	Safety shear bolt M12 x 65mm	1	-	-
19	9207-375	Safety shear bolt M12 x 65mm diam 3/8"	-	1	1
20	9459	Bearing ring for inner guard tube	1	1	1
21	9460	Bearing ring for outer guard tube	1	1	1
22	8109	Stopper	6	6	6
23	9221	Inner shield	1	1	1
24	9220	Outer shield	1	1	1
25	9222	Complete shield	1	1	1
26	9662	Bolt M16 x 80mm + lock nut	2	2	2
27	8308	Safety chain	2	2	2

GEAR BOX # 9307 (T279)

170-05031.tif

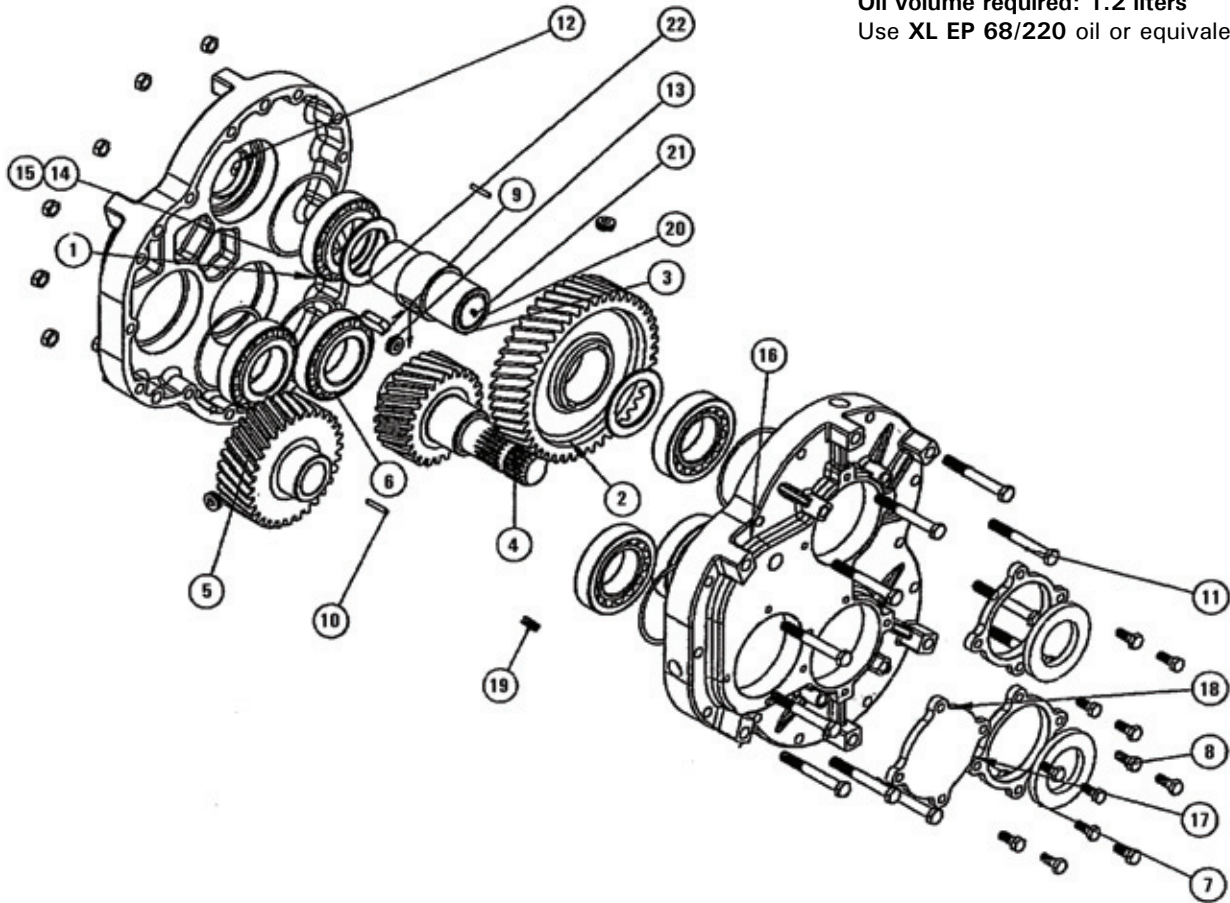
Oil volume required: 1.64 liters
Use SAE 80W90 oil or equivalent.



REF.	PART #	DESCRIPTION	QTY
1	6314	Oil seal 52 x 85 x 10	1
2	30209-A	Bearing: cone & cup	2
4	6318	Extension	1
5	6319	Bolt M10 x 22	16
6	32209-A	Bearing: cone & cup	1
7	6321	Shim	2
8	6322	Gear Z21	1
9	- - -	Use silicone caulking	-
11	6325	Side shaft Z20 (1 3/4" - 20 splines)	1
12	6326	Key B14 x 9 x 40	2
13	9345	Impeller shaft (2" & 1 3/4" - 20 splines)	1
14	6328	Spring washer	1
15	6329	Lock nut M40 x 1.5 H9	1
16	6330	Casing	1
17	6331	Plug 3/8" gas (drain plug)	1
18	6332	Oil seal 45 x 72 x 8	1
19	6333	External circlip 50 UNI7435	1
20	6334	Gear Z21	1
21	6335	Shim	2
22	30210-A	Bearing: cone & cup	1
24	6338	Cover	1
25	6339	Oil seal 50 x 72 x 8	1
26	6331	Plug 3/8" gas (oil level)	2
27	6331	Plug 3/8" gas (filling plug)	1

REDUCTION GEAR BOX # 9769 PRH-30M-2

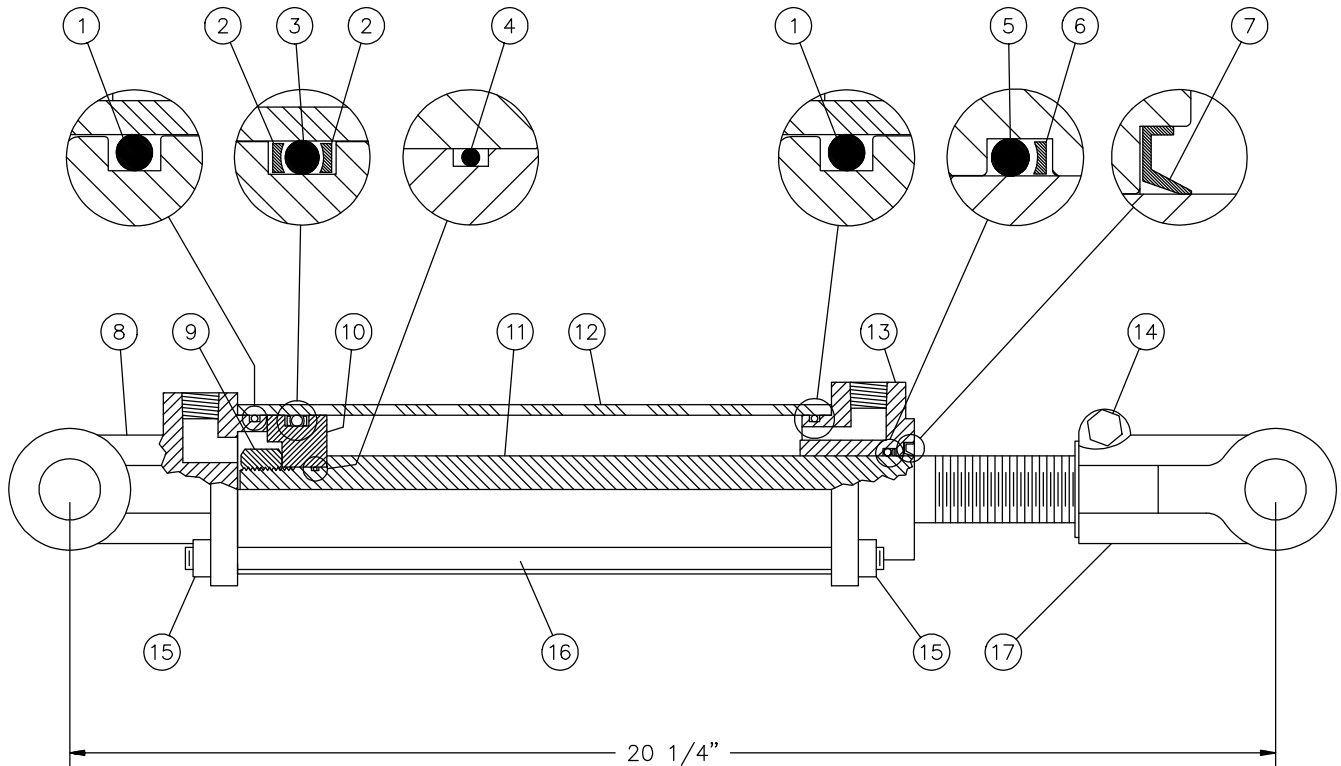
Oil volume required: 1.2 liters
Use XL EP 68/220 oil or equivalent.



REF.	#PART	DESCRIPTION	QTY
1	9770	Half casing	1
2	9771	Gear	2
3	9772	Splined adaptor 1 3/4" - 20	1
4	9773	Input shaft with gear	1
5	9774	Gear	1
6	NTN4T-32212U	Tapered roller-bearing	6
7	9775	Oil seal 60 mm x 100 x 10	3
8	Std.	Bolt M10 x 25	12
9	9776	Key M6 x 10 x 40	2
10	9777	Pin	2
11	Std.	Bolt M12 x 95	11
12	Std.	Nut M12	11
13	9778	Plug	1
14	9779	Shim	12
15	9780	Shim	12
16	9781	Half casing	1
17	9782	Hollow cap	2
18	9783	Solid cap	1
19	9784	Plug	6
20	9785	Cover	1
21	Std.	Grease fitting	1
22	9786	Spacer	1

CYLINDER 25TR08

15050

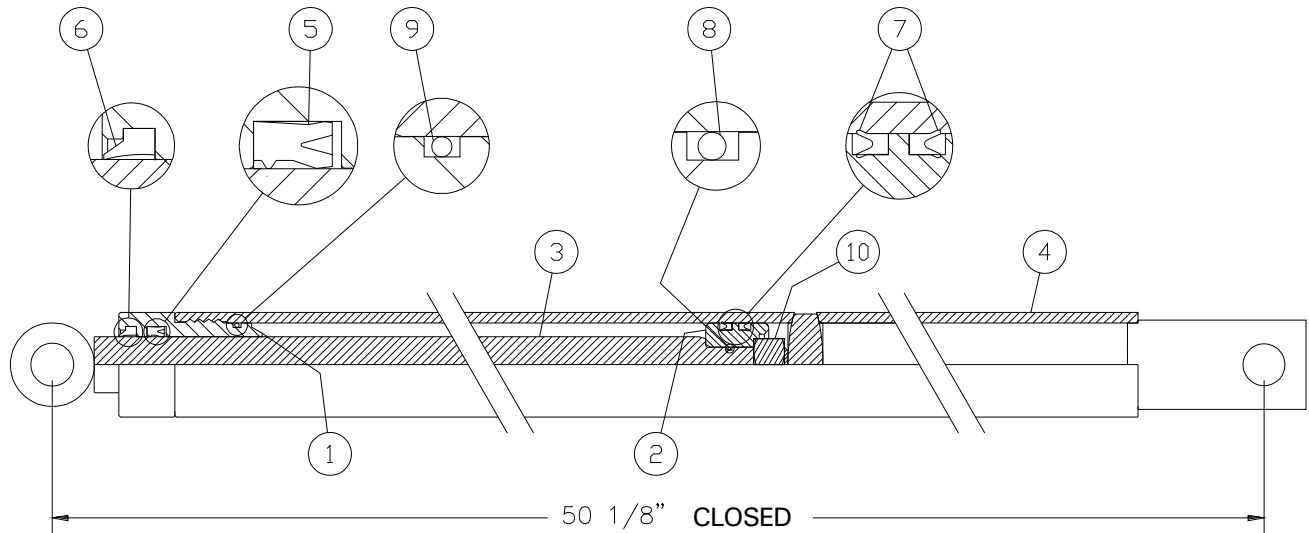


REF.	PART #	DESCRIPTION	QTY
1	See #RK25TR	O-ring 1/8" x 2 1/4" x 2 1/2"	2
2	See #RK25TR	Back-up 2 1/2" o.d. x 3/16 ø	2
3	See #RK25TR	O-ring 3/16" x 2 1/8" x 2 1/2"	1
4	See #RK25TR	O-ring 1/16" x 5/8" x 3/4"	1
5	See #RK25TR	O-ring 1/8" x 1 1/8" x 1 3/8"	1
6	See #RK25TR	Back-up 1 3/8" o.d. x 1/8" ø	1
7	See #RK25TR	Wiper 1 1/8" i.d. x 1 5/8" o.d.	1
8	492401	Yoke (for 2 1/2" tube)	1
9	338-46000	Nut 3/4" NF	1
10	4924-31	Piston 2 1/2" ø	1
11	492028	Piston rod 1 1/8"	1
12	491668	Cylinder body 2 1/2" ø	1
13	492421	Head (for 2 1/2" tube)	1
14	300-36355	Bolt 3/8" NC x 2 1/4" + nut	1
15	336-36000	Nut 3/8" NC	8
16	Std.	Threaded rod 3/8" NC x 12" lg	4
17	458599	Yoke (for 1 1/8" rod)	1
NI*	8183	Pin 1" ø + cotter pin	2
NI*	RK25TR	Repair kit for cylinder 2 1/2" (includes # 1, 2, 3, 4, 5, 6, & 7)	1

*NI = NOT ILLUSTRATED

EXTENSION CYLINDER 15PC32

170-04361



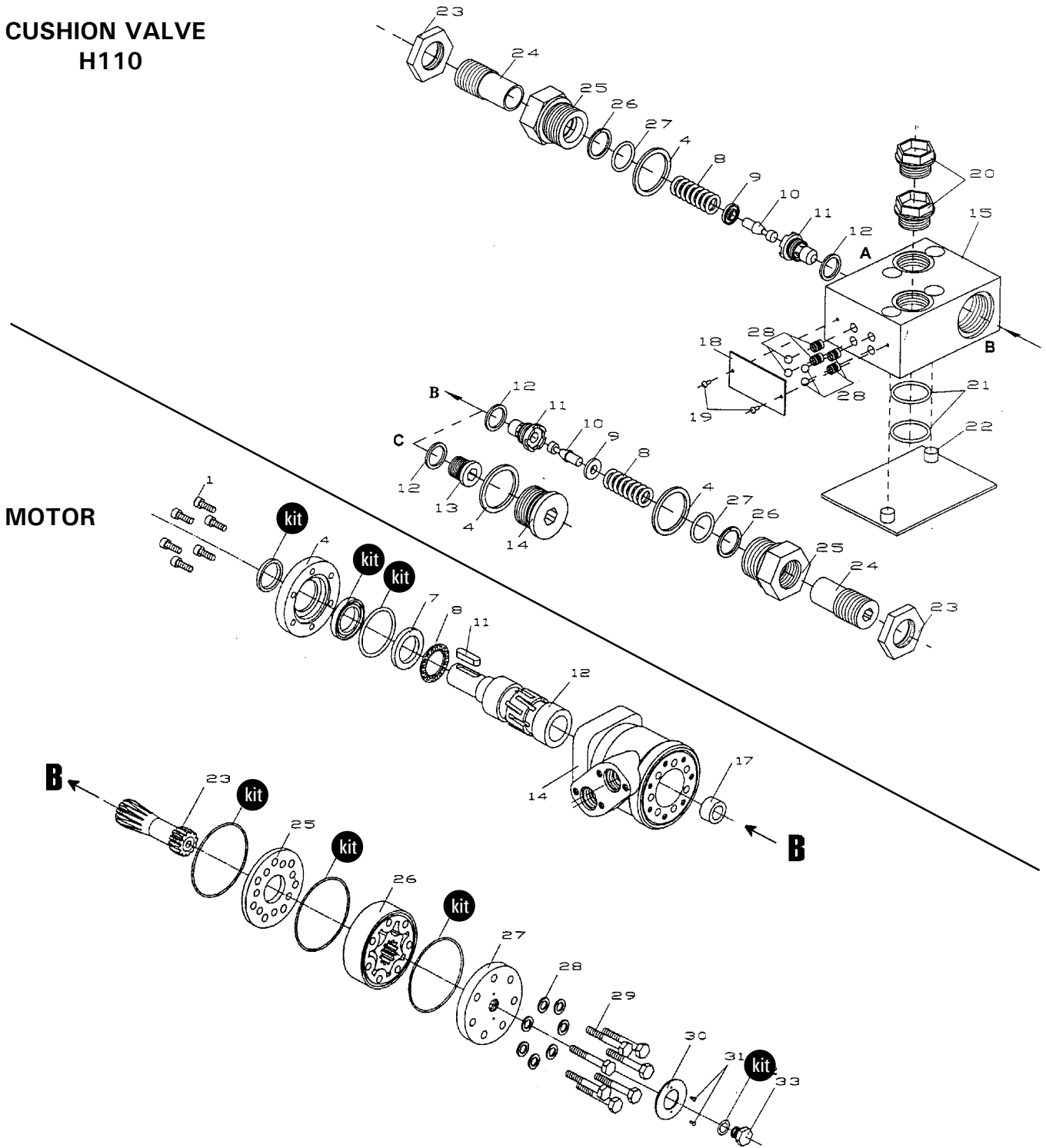
REF.	PART #	DESCRIPTION	QTY	
			15PC32D	15PC32G
1	150-06561	Head 1 1/2" dia.	1	1
2	150-06571	Piston 1 1/2" dia.	1	1
3	110-26561	Piston rod 1" dia.	1	1
4	110-29631	Cylinder body 1 1/2" dia. (15PC32D)	1	-
4	110-29632	Cylinder body 1 1/2" dia. (15PC32G)	-	1
5	DRTU-18-1.00-31	«U» seal 3/16" x 1" x 1 3/8"	1	1
6	ST-100	Wiper 3/16" x 1" x 1 3/8"	1	1
7	DSU12-1.25-18	«U» seal 3/16" x 1 1/4" x 1 1/2"	2	2
8	OR-014	O-ring 1/16" x 1/2" x 5/8"	1	1
9	OR-125	O-ring 3/32" x 1 5/16" x 1 1/2"	1	1
10	336-44000	Nut 5/8" NC	1	1
NI*	9689	Repair kit (includes # 5, 6, 7, 8 & 9)	1	1

*NI = NOT ILLUSTRATED

10

HYDRAULIC MOTOR # MLH-250 & MLH-315

CUSHION VALVE H110










REF.	PART #	DESCRIPTION	QTY
kit	8368	Set of seals.....	1
11	8369	Key for "Orbit" motor.....	1

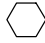




TORQUE CHART

11

TORQUE SPECIFICATION TABLE

Thread UNC and UNF		Grade 2 				Grade 5   				Grade 8*   			
Bolt size		Torque				Torque				Torque			
Inches	mm	Pound feet		Newton meters		Pound feet		Newton meters		Pound feet		Newton meters	
		min.	max.	min.	max.	min.	max.	min.	max.	min.	max.	min.	max.
1/4	6.35	5	6	6.8	8.13	9	11	12.2	14.9	12	15	16.3	30.3
5/16	7.94	10	12	13.6	16.3	17	20.5	23.1	27.8	24	29	32.5	39.3
3/8	9.53	20	23	27.1	31.2	35	42	47.5	57.0	45	54	61.0	73.2
7/16	11.11	30	35	40.7	47.4	54	64	73.2	86.8	70	84	94.9	113.9
1/2	12.70	45	52	61.0	70.5	80	96	108.5	130.2	110	132	149.2	179.0
9/16	14.29	65	75	88.1	101.6	110	132	149.2	179.0	160	192	217.0	260.4
5/8	15.88	95	105	128.7	142.3	150	180	203.4	244.1	220	264	298.3	358.0
3/4	19.05	150	185	203.3	250.7	270	324	366.1	439.3	380	456	515.3	618.3
7/8	22.23	160	200	216.8	271.0	400	480	542.4	650.9	600	720	813.6	976.3
1	25.40	250	300	338.8	406.5	580	696	786.5	943.8	900	1080	1220.4	1464.5
1 1/8	25.58	-	-	-	-	800	880	1084.8	1193.3	1280	1440	1735.7	1952.6
1 1/4	31.75	-	-	-	-	1120	1240	1518.7	1681.4	1820	2000	2467.9	2712.0
1 3/8	34.93	-	-	-	-	1460	1680	1979.8	2278.1	2380	2720	3227.3	3688.3
1 1/2	38.10	-	-	-	-	1940	2200	2630.6	2983.2	3160	3560	4285.0	4827.4

* Thick nuts must be used with grade 8 bolts.

Size of screw	Thread	Pitch (mm)	Grade 4T  				Grade 7T 				Grade 8T  			
			Torque				Torque				Torque			
			Pound feet		Newton meters		Pound feet		Newton meters		Pound feet		Newton meters	
		min.	max.	min.	max.	min.	max.	min.	max.	min.	max.	min.	max.	
M6	UNC	1.00	3.6	5.8	4.9	7.9	5.8	9.4	7.9	12.7	7.2	10	9.8	13.6
M8	UNC	1.25	7.2	14	9.8	19	17	22	23	29.8	20	26	27.1	35.2
M10	UNC	1.5	20	25	27.1	33.9	34	40	46.1	54.2	38	46	51.5	62.3
M12	UNC	1.75	28	34	37.9	46.1	51	59	69.1	79.9	57	66	77.2	89.4
M14	UNC	2.0	49	56	66.4	75.9	81	93	109.8	126	96	109	130.1	147.7
M16	UNC	2.0	67	77	90.8	104.3	116	130	157.2	176.2	129	145	174.8	196.5
M18	UNC	2.0	88	100	119.2	136	150	168	203.3	227.6	175	194	237.1	262.9
M20	UNC	2.5	108	130	146.3	176.2	186	205	252	277.8	213	249	288.6	337.4
M8	UNF	1.0	12	17	16.3	23	19	27	25.7	36.6	22	31	29.8	42
M10	UNF	1.25	20	29	27.1	39.3	35	47	47.4	63.7	40	52	54.2	70.5
M12	UNF	1.25	31	41	42	55.6	56	68	75.9	92.1	62	75	84	101.6
M14	UNF	1.5	52	64	70.5	86.7	90	106	122	143.6	107	124	145	168
M16	UNF	1.5	69	83	93.5	112.5	120	138	162.6	187	140	158	189.7	214.1
M18	UNF	1.5	100	117	136	158.5	177	199	239.8	269.6	202	231	273.7	313
M20	UNF	1.5	132	150	178.9	203.3	206	242	279.1	327.9	246	289	333.3	391.6

Use the above torques when special torque is not given.

NOTE: These values apply to fasteners as received from supplier, dry, or when lubricated with normal engine oil. They do not apply if extreme pressure lubricants are used.

WARRANTY

PRONOVOST warrants this product to the initial purchaser for the period of one year from the date of purchase against defects in materials and workmanship.

We will replace or repair defective parts free of charge if they are returned to our plant in St-Tite, Quebec, Canada.

Transportation charges are the responsibility of the customer. This warranty is not transferable.

Hydraulic cylinders and motors are covered by the manufacturer of these items.

The PTO shafts are warranted by the manufacturer and cover **only** defects in material and workmanship, and is conditional to recommended use and installation only.

All PRONOVOST spare parts purchased are covered by a three (3) month warranty.

This warranty becomes void and nul if the equipment is modified, breaks down as the result of an accident, is not operated according to manufacturer's recommendations, damaged by negligence or if maintenance has not been carried out as specified.

Our obligation is limited to the replacement or repair of the defective part. PRONOVOST accepts no responsibility for direct or indirect consequential damages of any kind.

Ce manuel est aussi disponible en français.
Veuillez téléphoner.



INNOVATION - EXCELLENCE

LES MACHINERIES PRONOVOST INC.

260, Haut du Lac Sud (route 159),
Saint-Tite, Quebec, Canada, G0X 3H0
Tel.: (418) 365-7551, Fax: (418) 365-7954
www.pronovost.qc.ca