



**OPERATOR'S / PARTS
MANUAL**



Snowblowers
Models

P-920 & P-920TRC
P-920-98 & P-920TRC-98
P-98134 & P-98134TRC



Copyright © Les Machineries Pronovost Inc., 2008

All rights reserved.
Printed in Canada.

TABLE OF CONTENTS

| Section | Item | Page |
|-----------|---|-----------|
| 1 | Introduction | 5 |
| 2 | Safety | 6 |
| | General Safety | 6 |
| | Safety in Operation | 6 |
| | Safety with Maintenance | 7 |
| | Safety in Transport | 7 |
| | Safety in Storage | 7 |
| 3 | Decals | 8 |
| | Safety Decals | 8 |
| | Maintenance Decals | 12 |
| 4 | Assembly | 13 |
| | General assembly | 13 |
| 5 | Start-up | 14 |
| | Basic Start-up Procedures | 14 |
| 6 | Maintenance | 15 |
| | General Maintenance | 15 |
| | Maintenance on Speed Reducer (with chain) | 16 |
| 7 | Storage | 17 |
| 8 | Trouble Shooting | 18 |
| 9 | Specifications | 20 |
| 10 | Parts List | 21 |
| | Snowblower P-920 P-920-98 | 21 |
| | Snowblower P-920TRC P-920TRC-98 | 24 |
| | Snowblower P-98134 | 28 |
| | Snowblower P-98134TRC | 31 |
| | Chute CST-7486 | 34 |
| | Semi-industrial Chute PSIG-7486 | 36 |
| | Industrial Chute PCG-7486 | 38 |
| | Options | 40 |
| | P.T.O. Shaft 9225-EG 9225-1 9569 | 42 |
| | P.T.O. Shaft 9475 9475-1 9475-2 | 43 |
| | Gear box 9307 | 44 |
| | Reducer 9575 | 45 |
| | Cylinder 25TR08 | 46 |
| | Hydraulic Motor MLH-250 & MLH-315 | 47 |
| 11 | Torque Chart | 48 |
| 12 | Warranty | 49 |

INTRODUCTION

CONGRATULATIONS!

Thank you for choosing PRONOVOST. We are confident this equipment will meet your requirements in terms of quality, performance and reliability.

This manual was prepared to assist you in the safe operation of your new Snowblower. It contains important information which will help you achieve excellent returns with your Snowblower for years to come.

Please read this manual completely before operating your Snowblower and keep it for future reference.

Before starting the machine, you or any other person who will be operating the Snowblower must familiarize yourself with the safety recommendations and the operating instructions. Please read carefully and be sure to understand and follow all recommendations and procedures.

In this manual, the right and left sides are identified as shown on Figure 1.

If you require additional information on your Snowblower, please contact your PRONOVOST Dealer.

NOW take a moment to enter the model, serial number and the date of purchase of your Snowblower in the space provided.

When ordering parts from your Dealer, please refer to these numbers for a fast and efficient service. Use PRONOVOST parts for replacement.

The model and serial numbers are on the name plate shown on Fig. 1.

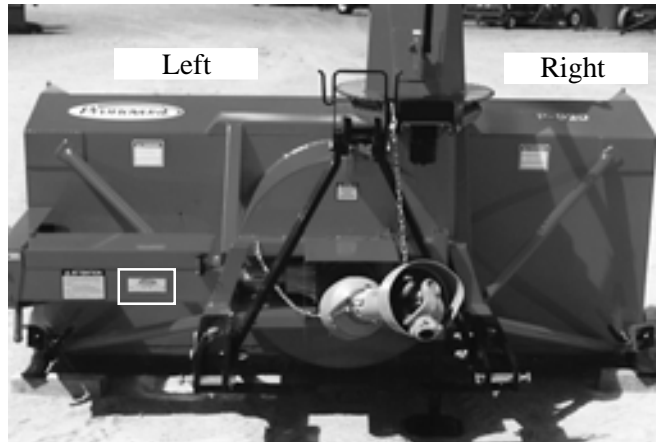


Figure 1

MODEL: _____ ✍

SERIAL NO: _____ ✍

DATE OF PURCHASE: _____ ✍

SAFETY

GENERAL SAFETY

2

WHEN YOU SEE THIS SYMBOL



ATTENTION!

**BE ALERT
YOUR SAFETY IS INVOLVED**

This symbol «**SAFETY ALERT**» is used in this manual and on the safety decals on the Snowblower. It warns you of the possibility of danger. Carefully read, understand and follow all safety recommendations before operating the Snowblower.

- 1) Careful operation is the best assurance against accidents. Carefully read this manual and follow all recommendations before operating your Snowblower. It is the owner's responsibility to make sure that anyone who will operate the Snowblower will read this manual before operating the equipment.
- 2) Familiarize yourself with all controls and always be ready to stop the Snowblower quickly in case of emergency.
- 3) Never let a child operate the Snowblower.
- 4) Do not modify the Snowblower. Any non authorized modification may affect the efficiency and/or safety of the equipment and will automatically void the warranty.
- 5) Never operate the Snowblower with defective parts or if damaged in any way. Have it repaired before operating.
- 6) Make sure all fasteners are in place and properly secured or tightened. Refer to torque chart on page 48.
- 7) Avoid wearing loose fitting clothing when working with the Snowblower. These could get entangled in moving parts of the equipment and cause accidents.

- 8) Prolonged exposure to noise may hamper hearing. Protect yourself by wearing adequate protection devices.
- 9) Hydraulic fluids under pressure can damage your skin. Do not use your hands to locate a leak.
- 10) Before the beginning of the snow season, inspect all areas where the Snowblower will be used and remove any object which may cause an accident and/or damage the equipment.
- 11) Never operate your Snowblower in poor visibility or without proper lighting conditions.

SAFETY IN OPERATION

- 1) Be sure there are no obstructions around the equipment and that no one stands near the equipment when in operation.
- 2) Do not operate an engine in a confined or non ventilated area.
- 3) Do not perform any adjustments, cleaning, maintenance or repairs with the engine running. The engine must be stopped and the P.T.O. disengaged. Preferably remove the key from the ignition.
- 4) Wear adequate clothing when working in cold or windy conditions.
- 5) Adjust skid shoes for proper ground clearance of scraper blade, especially in rough terrain or soft ground conditions.
- 6) Before operating, make sure the P.T.O. is properly installed and secured.
- 7) Before starting-up the Snowblower, make sure the auger and drum areas are free of ice.
- 8) Put P.T.O. control in neutral position before starting engine.
- 9) Keep hands, feet and clothing away from moving parts of the Snowblower. Stay away from the discharge chute.

SAFETY (cont'd)

- 10) Before unplugging the chute, always disengage the P.T.O., stop the engine and relieve all hydraulic pressures.
- 11) Do not operate in excessive inclined conditions. Be careful when turning in slopes.
- 12) Never operate your Snowblower with missing guards or without protective devices in place.
- 13) Do not operate your Snowblower near buildings, windows or other vehicles without prior and proper adjustment of the chute deflector.
- 14) Never aim discharge chute towards people or animals. This may cause serious injuries.
- 15) Always reduce operating speed in slippery conditions.
- 16) Be careful when backing-up, make sure you have good visibility.
- 17) Always be on the lookout for objects which may enter the Snowblower.
- 18) If undue vibrations are felt, disengage the P.T.O., stop the motor and look for the cause of the vibration. Vibration is usually the indication of a problem.
- 19) At the end of the operation, disengage the P.T.O., lower the Snowblower, put transmission in neutral, apply parking brake, stop engine and remove the key from the ignition.

SAFETY WITH MAINTENANCE

- 1) Perform the Snowblower maintenance according to recommendations contained in this manual.

- 2) Stop engine and relieve all hydraulic pressures before doing inspection, maintenance or repairs.
- 3) Never perform any work under the Snowblower while it is supported only by the tractor's hydraulic system. It must be completely supported by wooden blocks or other safe means.

SAFETY IN TRANSPORT

- 1) On public roads, use proper safety lights and check local regulations.
- 2) Be alert while driving on the road. Never carry passengers.
- 3) Always disengage P.T.O. while moving from one area of work to another.
- 4) It is recommended to use both brake pedals simultaneously for better control.
- 5) The recommended road speed should be such as to maintain full control over steering and braking.
- 6) Be careful while backing up, make sure you have good visibility.

SAFETY IN STORAGE

- 1) Provide adequate supports to prevent any accidental overturning of the Snowblower.
- 2) Do not let children play in the area where the snowblower is stored.

2

DECALS

SAFETY DECALS

The safety decals are affixed wherever special safety precautions are indicated. Locate them on the machine and read them carefully. If a decal is damaged, lost or illegible, install a new one. The following photos indicate where each one must be installed.

3

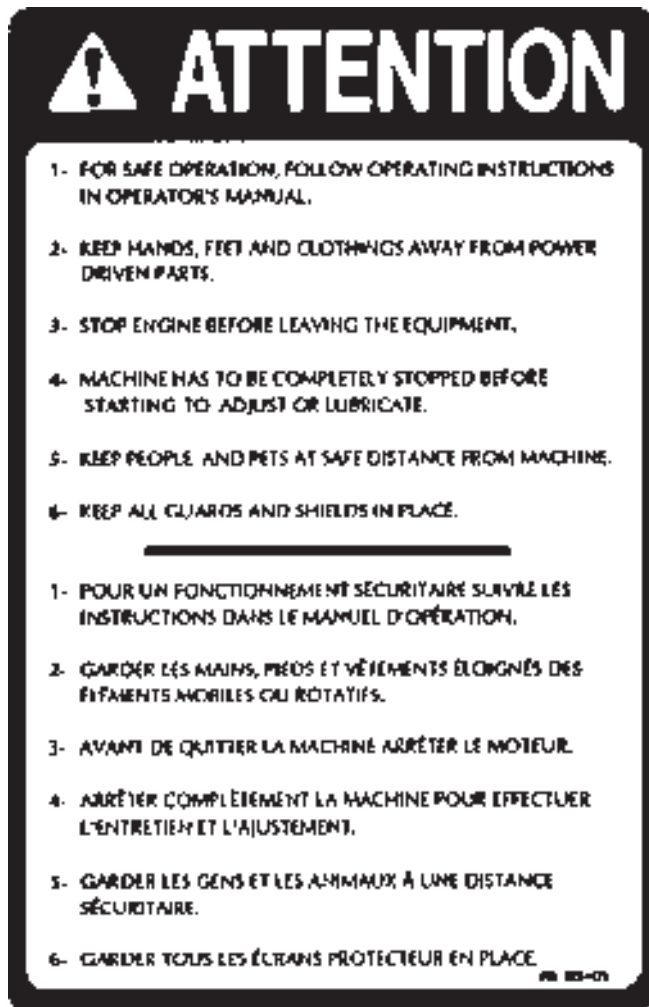


Figure 2
Decal A

Part no.: A102



Figure 3



Figure 4
Decal B

Part no.: A101

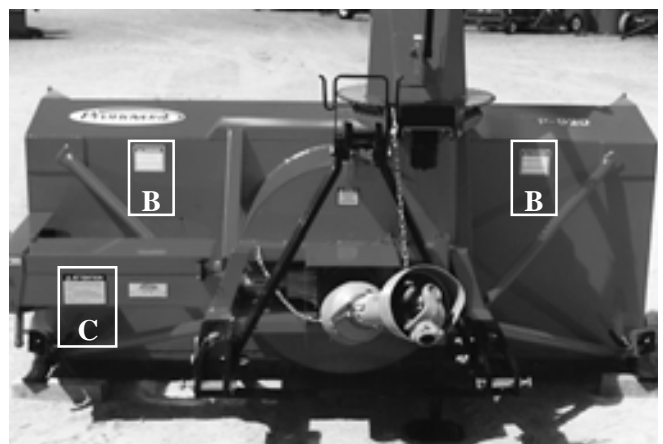


Figure 5

DECALS (cont'd)

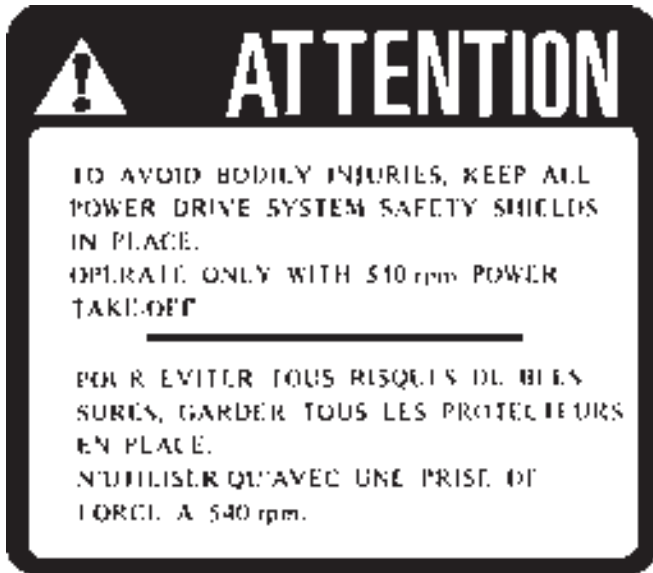


Figure 6
Decal C

Part no.: A107



Figure 7
Decal D

Part no.: A103

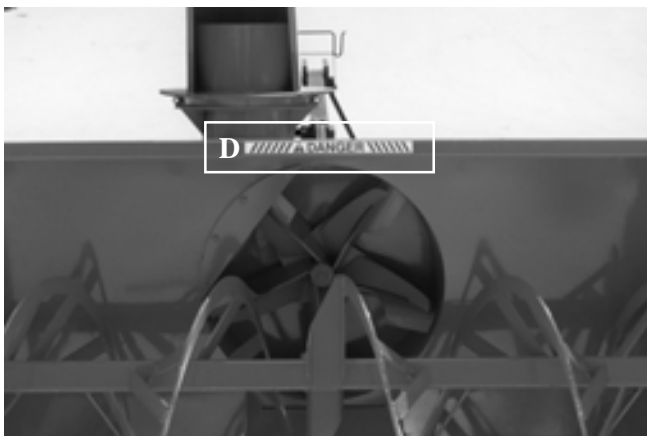


Figure 8

Decal E in Fig. 9 is located directly on the P.T.O. shaft. It is not visible when the safety shield is in place. It must never be visible when you operate the equipment.



Figure 9
Decal E

Part no.: A108

3

DECALS (cont'd)

3



Figure 10
Decal F

Part no.: A 109

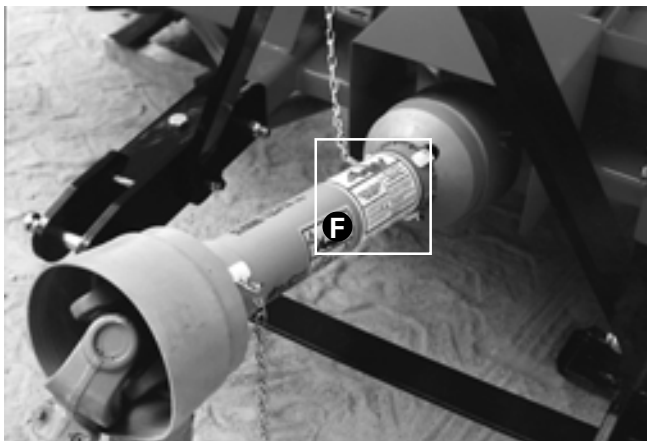


Figure 11



Figure 12
Autocollant G

Pièce no.: A 109

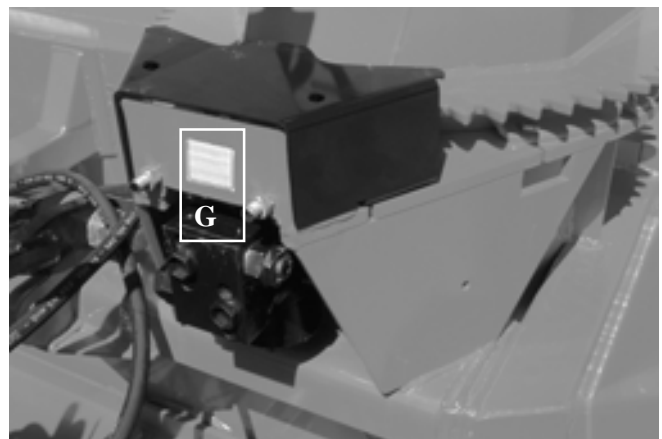


Figure 13

DECALS (cont'd)

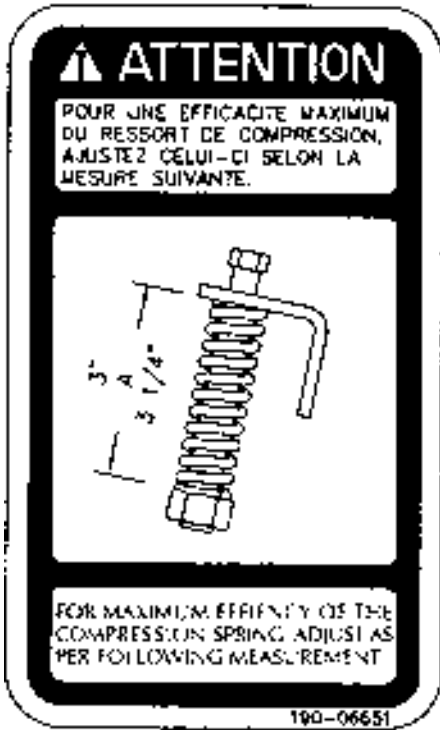


Figure 14
Decal H Part no.: 190-06651

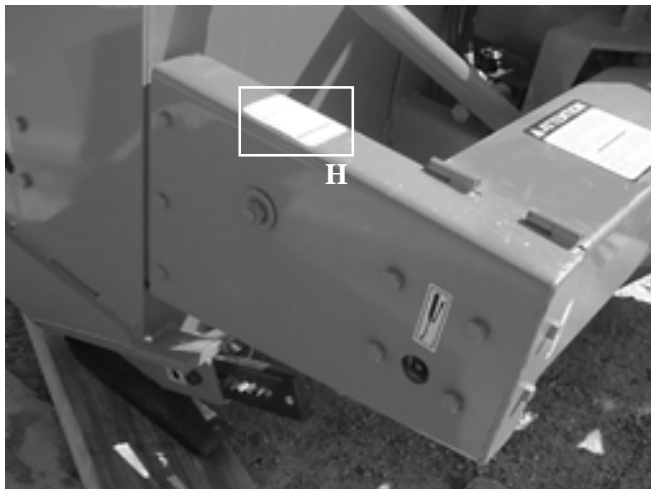


Figure 15



Figure 16
Decal I Part no.: 190-07611



Figure 17

DECALS (cont'd)

MAINTENANCE DECALS

The maintenance decals indicate the points requiring lubrication. Refer to maintenance section for more details.



Figure 18

Part no.: A 105



Figure 19

Part no.: A 106



Figure 20
Decal J

Part no.: A104

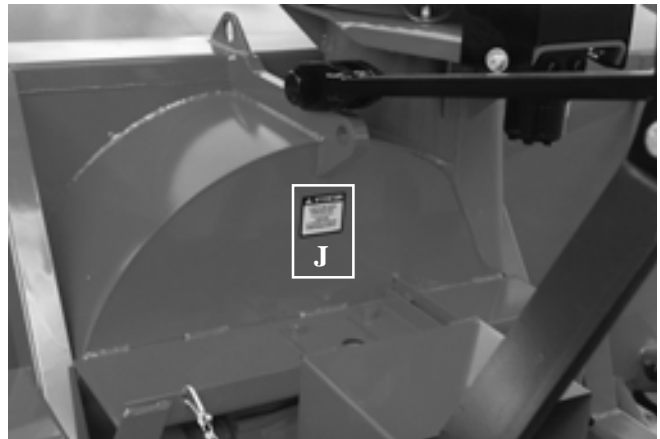


Figure 21

3

ASSEMBLY



Figure 22

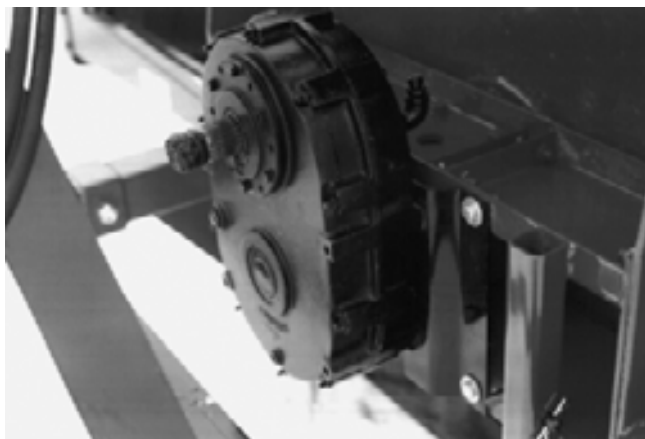


Figure 23



Figure 24

ASSEMBLY

- 1) The Snowblower is shipped partly assembled.
- 2) Install 3-point system according to the model of your Snowblower. (See section 10 for parts numbers). Use the holes most convenient to the type of tractor used (Fig. 22).
- 3) If your snowblower is equipped with the optional 1000 to 540 RPM reducer, install it on the gear box with the plate included (Fig. 23).
- 4) Install P.T.O. shaft with the shear pin end onto the Snowblower gear box. Then attach safety shield support chain as shown (Fig. 24). **WARNING:** The telescoping tubes of the drive shaft must never be allowed to bottom out while maintaining a minimum overlap of 6 inches.
- 5) If you install a hydraulic cylinder on the chute deflector, use model 25TR08 cylinder.
- 6) When installing chute, grease the groove of the UHMW slide in order to prevent the corrosion of the rim of the chute.
- 7) Install the chute rotation mechanism.

4

STARTING-UP



Figure 25

5

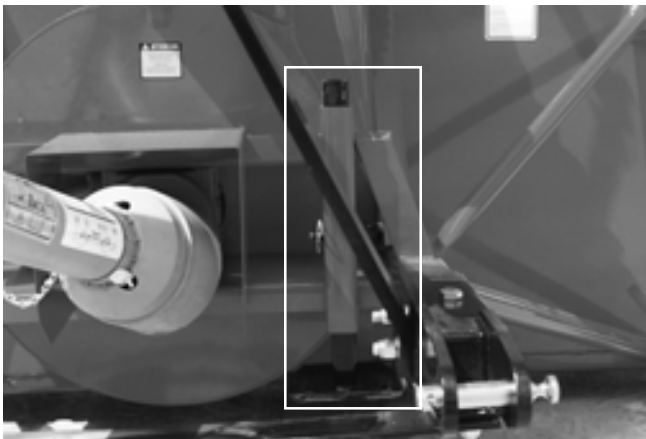


Figure 26



Figure 27

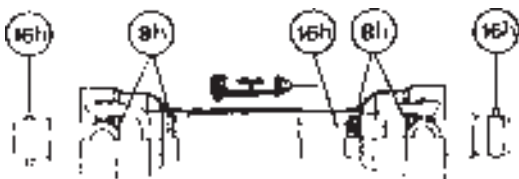
START-UP PROCEDURES

- 1) Check oil level in gearbox and in speed reducer if so equipped. Adjust to required oil level as per drawing in Parts List section. Use SAE 80W90 oil.
- 2) Lubricate all points with a good quality multipurpose grease.
- 3) Check chain take-up adjustment. The spring maintaining the tension must be compressed to a length between 3" and 3 1/4".
- 4) Verify for adequate tightness of all fastening devices. Refer to torque chart on page 48.
- 5) Adjust skid shoes according to ground conditions (Fig. 25).
- 6) Following the installation of the Snowblower on the tractor, **do not forget** to lift the storage support (Fig. 26).
- 7) Make sure of a 540 RPM input to your snowblower.
- 8) Check impeller adjustment. The tip of the blades should be approximately 1/8" to 3/16" from the discharge wall of the drum. If necessary, adjust with the take-up screws provided (Fig. 27).
- 9) In order to avoid damaging your snowblower, adjust the speed of descent of your 3 point hitch to prevent striking the ground too hard.
- 10) Adjust the hydraulic flow in order to have a good control of the rotation speed of the chute.

MAINTENANCE

GENERAL MAINTENANCE

- 1) Wipe off all grease fittings with a clean cloth before adding grease in order to avoid injecting dirt and sand.
- 2) Repair or replace damaged grease fittings.
- 3) Lubricate all grease fittings every 8 hours of operation.
- 4) Lubricate drive chain every 8 hours of operation.
- 5) Lubricate P.T.O. shaft as indicated below:



Pull out the P.T.O. and lubricate between the two tubes with low temperature grease. Drive line tubes must slide easily even in cold weather. Clean off old hardened grease and apply fresh grease as needed.

- 6) Check oil level in gear box once a month. Adjust to required oil level as per drawing in Parts List section. Use SAE 80W90 oil.
- 7) Check tension of drive chain every 24 hours of operation and adjust if necessary.
- 8) Check for tightness of bearing collars every 48 hours of operation.
- 9) Change gearbox oil once a year. Adjust to required oil level as per drawing in Parts List section. Use SAE 80W90 oil.

- 10) Check all nuts and bolts once a year. If necessary use torque chart on page 48.
- 11) Standard scraper blades are reversible. Reverse when one edge is worn out.
- 12) For the auger drive shaft, always use a grade 5 shear bolt.
- 13) For the PTO shaft, always use a grade 10.9 shear bolt at 540 RPM or a grade 8.8 shear bolt at 1000 RPM.
- 14) UHMW slides do not require lubrication except at the end of the season in order to prevent corrosion of steel components that are in contact with the UHMW material.

If your snowblower is equipped with the optional speed reducer

- 15) After 10 working hours, the chain's adjustment (if applicable) must be checked and every 100 working hours. Please refer to section: Maintenance on Speed Reducer (with chains).
- 16) Check oil level in speed reducer once a month. Adjust to required oil level as per drawing in Parts List section. Use SAE 80W90 oil.
- 17) Drain the oil of the speed reducer once a year. Adjust to required oil level as per drawing in Parts List section. Use SAE 80W90 oil.

6

MAINTENANCE (cont'd)

MAINTENANCE ON SPEED REDUCER (with chain)

It is extremely important that the chain inside the chain box is **tightened**. A loose chain will add shocks to the entire box (chain, sprockets, bearings and spline couplings to gearbox).

Instructions for speed reducer (with chains) maintenance

This chain box has double functions.

- 1) Reduce angles at both ends of PTO in working position by increasing the input shaft height of 8".
- 2) Increase PTO capacity by increasing speed from 540 RPM to 1000 RPM.

PTO SHEAR BOLT

Because the PTO is running at 1000 RPM instead of 540 RPM, the shear bolt value must be changed.

AT 540 RPM on a PTO size 80 or 90, the shear bolt is 12 mm, grade 10.9, part number **9207**.

AT 1000 RPM, the shear bolt must be changed depending on the diameter of the bore of the shear plate of your drive line:

- a) If the bore is 12 mm, you must use a 12 mm, grade 8.8 bolt that has been reduced to 10 mm at the point of rupture. part number **9207-375**, or
- b) If the bore is 10 mm, vous devez you must use a 10 mm, grade 8.8 bolt, part number **8218**.

ADJUSTMENT OF THE CHAIN'S TENSION

After 10 working hours, the chain's adjustment must be checked. In order to do so, verify the backlash between the input and the output shaft by turning the input shaft in both directions while the output shaft remains still. If there is a play of 10° or more, the chain must then be readjusted as follows:

- 1) Remove PTO from the chain box.
- 2) Unscrew the 12 bolts 5/16" dia. (item #22) from covers (items #7 and #15) around the input shaft on both sides of the chain box (6 bolts on each side).
NOTE: Input shaft covers are eccentric with outside of covers. Therefore by turning input shaft cover, center to center distance of shafts will be changed and thus, this will adjust the chain's tension.
- 3) With a hammer and a screw-driver or a chisel, gently turn both covers in the same direction until the next hole of the cover is in line with the threaded hole of the chain box.
IMPORTANT: Make sure that the covers are turned in the same direction and by the same number of holes. Otherwise, both shafts will not be parallel and serious damages might arise.
- 4) Verify the backlash between both shafts, as described above. If the difference is too high, repeat the operation explained in point 3. If the backlash is correct, reinstall the bolts and the PTO.
- 5) Verify the backlash every 100 working hours.

MAINTENANCE ON SPEED REDUCER

- 1) Check oil level in speed reducer once a month. Adjust to required oil level as per drawing in Parts List section. Use SAE 80W90 oil.
- 2) Drain the oil of the speed reducer once a year. Adjust to required oil level as per drawing in Parts List section. Use SAE 80W90 oil.

6

STORAGE

- 1) Store the Snowblower in a cool, dry place.
- 2) Support the Snowblower with wooden blocks.
- 3) Keep all piston rods in the retracted position. This will assure better protection against the elements.
- 4) Clean your Snowblower.
- 5) Thoroughly inspect all parts of the Snowblower. Replace or repair worn or defective parts.
- 6) Touch-up or repaint if necessary.
- 7) Lubricate all points before storage.

TROUBLESHOOTING

P.T.O. SHAFT

| PROBLEM | POSSIBLE CAUSE | CORRECTION |
|--|---|--|
| <ul style="list-style-type: none"> - Premature wear of U-joints and/ or bluish color of cross journals. | <ul style="list-style-type: none"> - Insufficient lubrication. - Excessive working angle. | <ul style="list-style-type: none"> - Follow lubrication recommendations. - Replace defective U-joints. - Make sure the snowblower inlet face is perpendicular to the ground and if possible readjust 3-point hitch in order to position the snowblower further away from tractor. |
| <ul style="list-style-type: none"> - Gripping or premature wear of telescoping members. | <ul style="list-style-type: none"> - Too much sliding under load. - Tube overlap too-short: minimum recommended is 6". - Insufficient lubrication. - Contaminants (sand, etc.). | <ul style="list-style-type: none"> - Avoid raising snowblower while in operation. - Readjust 3-point hitch in order to position the snowblower closer to the tractor. - Follow lubrication recommendations. - Replace defective telescopic members. |
| <ul style="list-style-type: none"> - Damaged or jammed locking pin or bolt. | <ul style="list-style-type: none"> - Pin or orifice contaminated by sand, ice, etc. - Telescoping members too long, exerting pressure on locking device. | <ul style="list-style-type: none"> - Clean and grease. - Readjust 3-point hitch in order to position the snowblower further away from tractor. |
| <ul style="list-style-type: none"> - Premature wear of guard tube bearing ring. | <ul style="list-style-type: none"> - Lack of lubrication. - Wrong installation of guard chain. - Part of the guard in contact with the equipment. | <ul style="list-style-type: none"> - Follow lubrication instructions. - Adjust chain to prevent interference between guard & equipment. - Replace worn or damaged bearing rings. |
| <ul style="list-style-type: none"> - Cut or deformed safety guard tubes. | <ul style="list-style-type: none"> - Tubes in contact with the equipment. | <ul style="list-style-type: none"> - Eliminate any interference between tubes and equipment or tractor. - Replace damaged tubes. |

TROUBLESHOOTING (cont'd)

SNOWBLOWER

| PROBLEM | POSSIBLE CAUSE | CORRECTION |
|--|--|---|
| - The snow is not being thrown as far as usual. | <ul style="list-style-type: none"> - Tractor RPM too low. - Gap too wide between impeller blade tip and drum outlet wall. - Insufficient tractor HP. | <ul style="list-style-type: none"> - Raise P.T.O. speed to a minimum of 540 RPM. - Adjust impeller blades closer to drum outlet (1/8" to 3/16"). - Reduce travel speed. |
| - Frequent plugging of discharge chute. | <ul style="list-style-type: none"> - Tractor RPM too low. - Tractor RPM reduced too early with snow still in the Snowblower. - Slippage of PTO clutch mechanism. - Wet snow condition. | <ul style="list-style-type: none"> - Raise P.T.O. speed to a minimum of 540 RPM. - Make sure the Snowblower is completely empty before reducing RPM, especially on tractors with foot controlled RPM. - Repare clutch. - Reduce travel speed. - Remove the chute access panel. |
| - The impeller will not turn. | <ul style="list-style-type: none"> - Shear bolt broken on drive shaft. | <ul style="list-style-type: none"> - Replace shear bolt. |
| - The auger will not turn. | <ul style="list-style-type: none"> - Shear bolt broken on drive shaft. - Shear bolt broken on auger drive shaft. - Broken drive chain. - Broken key on motor. | <ul style="list-style-type: none"> - Replace shear bolt. - Replace shear bolt. - Fix or replace chain. - Replace the key. |
| - The rotating drum will not turn. | <ul style="list-style-type: none"> - Ice accumulation. - Wrong hydraulic connections. | <ul style="list-style-type: none"> - Remove ice. - Check hydraulic connections. |
| - The rotating drum will not hold it's position when blowing via the spout | <ul style="list-style-type: none"> - Cushion valve setting too low - Tension of the spring in drum locking mechanism insufficient | <ul style="list-style-type: none"> - Reset cushion valve up to 1800 psi (max) - Increase tension of spring by adding shim(s) |
| - The chute will not turn. | <ul style="list-style-type: none"> - Ice accumulation. - Wrong hydraulic connections. - Broken key on motor. | <ul style="list-style-type: none"> - Remove ice. - Check hydraulic connections. - Replace the key. |

SPECIFICATIONS

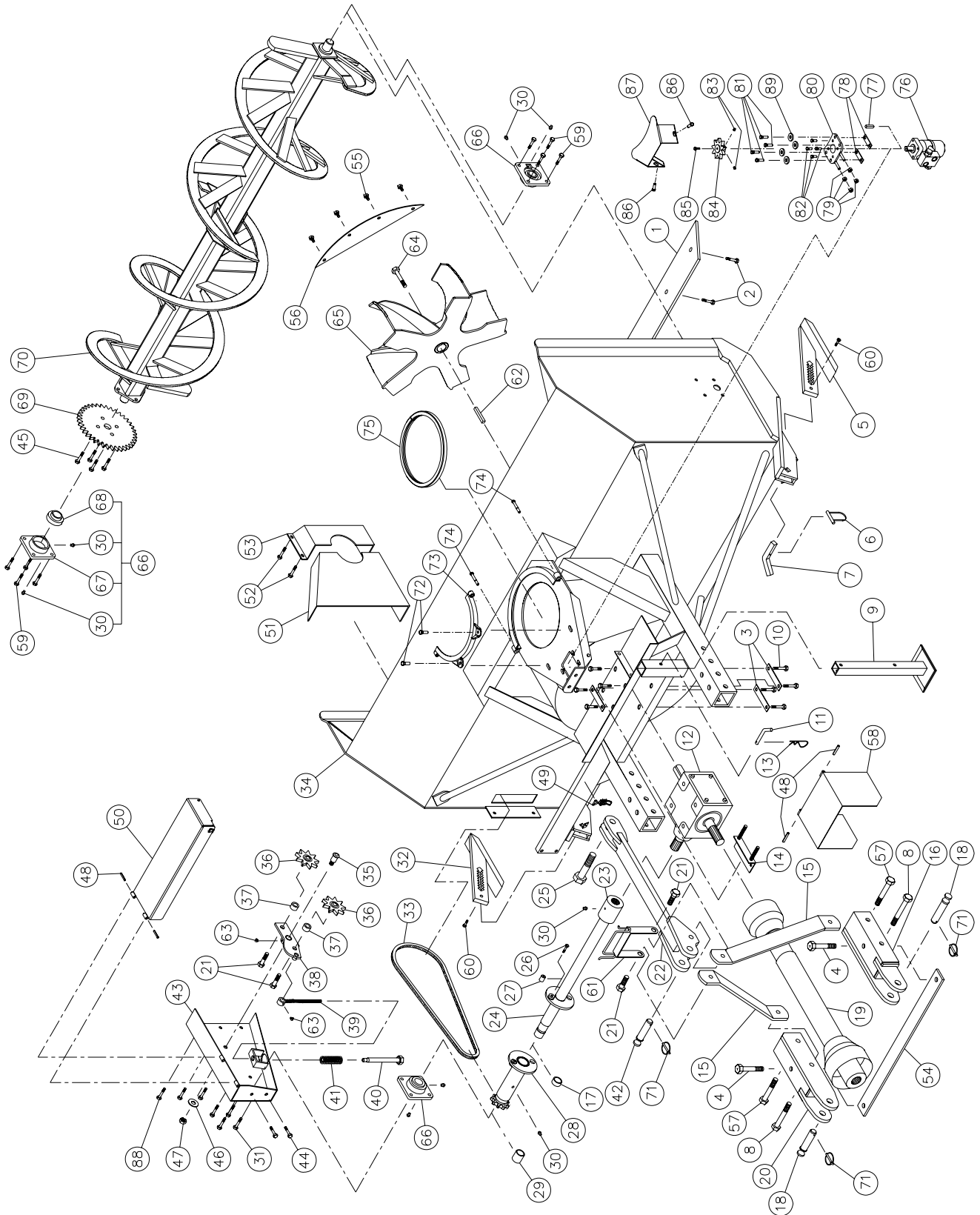
| | | GROUP II | | |
|-----------------------------------|--|-------------------|-------------------|----------------|
| Snowblower model | | P-920 | P-920 -98 | P-98134 |
| Snowblower model | | P-920 TRC | P-920 TRC-98 | P-98134 TRC |
| Horse power recommended (HP) | min.-max. | 75 to 100 | 75 to 100 | 90 to 125 |
| Working width | po. - (cm) | 92"(234) | 98" (249) | 98" (249) |
| Cutting height | po. - (cm) | 39" (99) | 39" (99) | 40" (102) |
| Height - chute base | po. - (cm) | 42 1/8" (107.0) | 42 1/8" (107.0) | 43 1/8" (110) |
| Height - chute base, TRC model | po. - (cm) | 44 11/16" (113.5) | 44 11/16" (113.5) | 47 1/4" (120) |
| Impeller diameter | po. - (cm) | 30" (76) | 30" (76) | 34" (86) |
| Depth of drum | po. - (cm) | 12" (30.5) | 12" (30.5) | 12" (30.5) |
| Impeller blades | | 5 | 5 | 5 |
| Size of impeller shaft | po. - (cm) | 2" | 2" | 2" |
| Height - Impeller center | po. - (cm) | 20" (50.8) | 20" (50.8) | 21" (53) |
| Impeller RPM | | 540 | 540 | 540 |
| Number of augers | | 1 | 1 | 1 |
| Main auger diameter | po. - (cm) | 23" (58) | 23" (58) | 23" (58) |
| Upper auger 13"/33 cm dia. | | - | - | - |
| Drive chain - main auger | | 80 | 80 | 80 |
| Oil bath sealed gear box | | Std. | Std. | Std. |
| Chute rotation mechanism | Manual | - | - | - |
| | Hydraulic (motor) | Std. | Std. | Std. |
| Number of shear bolts | | 2 | 2 | 2 |
| Hitch category | | 2 | 2 | 2 |
| Balanced impeller | | Std. | Std. | Std. |
| Balanced auger | | Std. | Std. | Std. |
| Drum rotation for hydraulic motor | | Std. | Std. | Std. |
| 1000 to 540 RPM reducer | | Opt. | Opt. | Opt. |
| Scrapper blades | Standard steel - not rev. | - | - | - |
| | Standard steel - rev. | Std. | Std. | Std. |
| | Carbon steel 1/2" x 3" | - | - | - |
| | Carbon steel 1/2" x 4" | Opt. | Opt. | Opt. |
| | Carbon steel 1/2" x 6" | Opt. | Opt. | Opt. |
| | Tivar | Opt. | Opt. | Opt. |
| | Stainless steel 1/2" x 3" | - | - | - |
| | Stainless steel 1/2" x 4" | Opt. | Opt. | Opt. |
| Adjustable skid shoes | Standard steel | Std. | Std. | Std. |
| | Carbon steel | Opt. | Opt. | Opt. |
| | Stainless steel | Opt. | Opt. | Opt. |
| Full flight auger (industrial) | | Opt. | Opt. | Opt. |
| Chute | regular | Opt. | Opt. | Opt. |
| | semi-industrial | Opt. | Opt. | Opt. |
| | quick attach indust. - extension 24" or 48" | Opt. | Opt. | Opt. |
| | | Opt. | Opt. | Opt. |
| | industrial telescopic | - | - | - |
| Deflector | manual | Opt. | Opt. | Opt. |
| | hydraulic | Opt. | Opt. | Opt. |
| Bearing / ductile iron casting | | Std. | Std. | Std. |
| Lateral blades | | Opt. | Opt. | Opt. |
| P.T.O. | (standard) | No. 8 | No. 8 | No. 8 |
| P.T.O. | (optional) | No. 9 | No. 9 | No. 9 |
| Weight | lbs - kg | 1650 (748) | 1725 (781) | 1880 (855) |
| | lbs - kg | 1800 (816) | 1875 (848) | 2030 (922) |

Design and specifications subject to change without notice.

Shaded lines apply only to models with rotary drum (TRC).

SNOWBLOWER P-920 P-920-98

170-03891R3



SNOWBLOWER P-920 P-920-98 (cont'd)

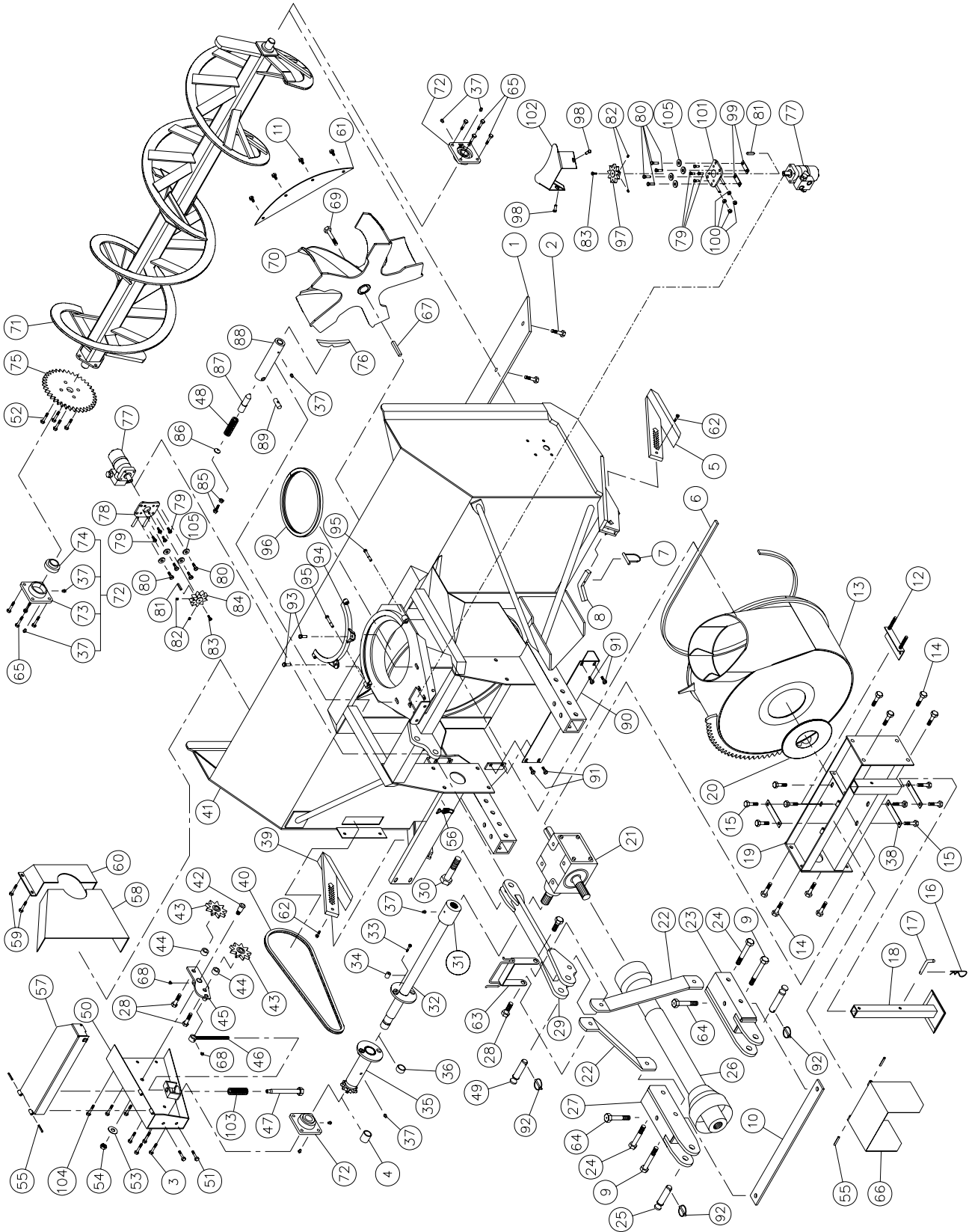
| REF. | PART # | DESCRIPTION | QTY | |
|------|-----------|---|-------|----------|
| | | | P-920 | P-920-98 |
| 1 | 140-00812 | Reversible scraper blade 1/2" x 4" x 84 1/2" lg | 1 | - |
| 1 | 140-00832 | Reversible scraper blade 1/2" x 4" x 90 1/2" lg | - | 1 |
| 2 | 319-38325 | Plow bolt 7/16" x 1 3/4" lg + nut & lock washer | 9 | 9 |
| 3 | 140-10761 | Back plate | 3 | 3 |
| 4 | 302-46550 | Bolt 3/4" NF x 5 1/2" lg + nylon locknut | 2 | 2 |
| 5 | 110-04531 | Skid shoe (right side) | 1 | 1 |
| 6 | 8112 | Lock pin 1/4" | 2 | 2 |
| 7 | 140-03361 | Skid shoes lock | 2 | 2 |
| 8 | 302-46610 | Bolt 3/4" NF x 6 1/2" lg + nylon lock nut | 2 | 2 |
| 9 | 9462 | Storage support | 1 | 1 |
| 10 | 300-44310 | Bolt 5/8" NC x 1 1/2" lg + lock washer + 6 flat washers | 8 | 8 |
| 11 | 8220 | Storage support pin | 1 | 1 |
| 12 | 9307 | Gear box | 1 | 1 |
| 13 | Std. | Hitch pin clip 5/32" | 1 | 1 |
| 14 | 9428 | Adjustment plate for gear box + 4 nuts 1/2" NC | 1 | 1 |
| 15 | 140-05493 | 3-points side bar | 2 | 2 |
| 16 | 110-15214 | Right lower hitch | 1 | 1 |
| 17 | 160-06901 | Aluminium-bronze bushing 1 3/4" i.d. x 2" o.d. x 1/2" lg | 1 | 1 |
| 18 | 9269 | Pin category 2 (1 1/8" diameter) | 2 | 2 |
| 19 | 9225-EG | P.T.O. shaft T80 | 1 | 1 |
| 19 | 9475 | P.T.O. shaft T90 | opt. | opt. |
| 20 | 110-15213 | Left lower hitch | 1 | 1 |
| 21 | 300-46400 | Bolt 3/4" NC x 3" lg + nylon lock nut | 4 | 4 |
| 22 | 110-15421 | Upper hitch | 1 | 1 |
| 23 | 6467 | Splined adaptor 1 3/4"-20 (welded) | 1 | 1 |
| 24 | 110-18251 | Auger drive shaft 34 7/16" lg overall (includes no. 23 and 27) | 1 | - |
| 24 | 110-18261 | Auger drive shaft 37 7/16" lg overall (includes no. 23 and 27) | - | 1 |
| 25 | 300-54460 | Bolt 1 1/4" NC x 4" lg + nylon lock nut | 1 | 1 |
| 26 | 300-34340 | Bolt 5/16" NC x 2" lg grade 5 + nylon lock nut | 1 | 1 |
| 27 | 150-03911 | Bushing 5/16" i.d. x 1" o.d. x 3/4" lg (welded) | 2 | 2 |
| 28 | 110-18241 | Sprocket #80 + shearplate (includes no. 17 & 29) | 1 | 1 |
| 29 | 160-07311 | Aluminium-bronze bushing 1 1/2" i.d. x 1 7/8" o.d. x 1 1/4" lg | 1 | 1 |
| 30 | Std. | Grease fitting 1/4"-28 straight | 8 | 8 |
| 31 | 300-40310 | Bolt 1/2" NC x 1 1/2" lg + nylon locknut (thin) & flat washer 7/16" | 4 | 4 |
| 32 | 110-04521 | Skid shoe (left side) | 1 | 1 |
| 33 | 190-00431 | Chain #80 x 79" lg (79 links) | 1 | 1 |
| 33 | 26A80 | Connecting link #80 | 1 | 1 |
| 33 | 59-80 | Offset link #80 | 1 | 1 |
| 34 | 120-02796 | Frame P-920 | 1 | - |
| 34 | 120-02816 | Frame P-920-98 | - | 1 |
| 35 | 150-00332 | Idler clevis pin | 1 | 1 |
| 36 | 9287 | Idler sprocket #80 (steel) | 2 | 2 |
| 37 | 160-06511 | Spacer 3/4" i.d. x 1 1/4" o.d. x 3/4" lg | 2 | 2 |
| 38 | 110-01052 | Idler | 1 | 1 |
| 39 | 110-01063 | Threaded rod for idler adjustment + nut 7/16" NC | 1 | 1 |
| 40 | 110-01071 | Threaded tube for idler adjustment | 1 | 1 |
| 41 | 9688 | Compression spring | 1 | 1 |
| 42 | 150-05961 | Pin category 2 (1" diameter) (top link) | 1 | 1 |
| 43 | 110-10564 | Chain guard | 1 | 1 |
| 44 | 300-38250 | Bolt 7/16" NC x 1" lg + nylon locknut | 2 | 2 |
| 45 | 300-38310 | Bolt 7/16" NC x 1 1/2" lg + two-way locknut | 4 | 4 |
| 46 | 376-44000 | Flat washer 5/8" | 1 | 1 |
| 47 | 346-45000 | Nylon locknut 5/8" NC thin | 1 | 1 |

SNOWBLOWER P-920 P-920-98 (cont'd)

| REF. | PART # | DESCRIPTION | QTY | |
|------|------------|---|-------|----------|
| | | | P-920 | P-920-98 |
| 48 | Std. | Roll pin 5/16" x 2" lg | 4 | 4 |
| 49 | 8374 | Adjustable clamp fastener (welded) | 1 | 1 |
| 50 | 110-21001 | Side shaft guard for P-920 | 1 | - |
| 50 | 110-27621 | Side shaft guard for P-920-98 | - | 1 |
| 51 | 130-01382 | Inside guard (welded) | 1 | 1 |
| 52 | 300-36250 | Bolt 3/8" NC x 1" lg + nylon lock nut & flat washer | 4 | 4 |
| 53 | 8925 | Inside guard (bolted) | 1 | 1 |
| 54 | 140-03441 | Brace 3/8" x 2 1/2" x 38 1/4" | 1 | 1 |
| 55 | 300-38280 | Bolt 7/16" NC x 1 1/4" lg + nylon locknut | 4 | 4 |
| 56 | 130-02111 | Deflector | 1 | 1 |
| 57 | 302-46580 | Bolt 3/4" NF x 6" lg + nylon locknut | 2 | 2 |
| 58 | 110-12541 | Hinged P.T.O. shroud | 1 | 1 |
| 59 | 300-40325 | Bolt 1/2" NC x 1 3/4" lg + nylon locknut & flat washer 7/16" | 8 | 8 |
| 60 | 300-32310 | Bolt 1/4" NC x 1 1/2" lg + nylon locknut | 2 | 2 |
| 61 | 110-15201 | Hoses support | 1 | 1 |
| 62 | 9285 | Square key 1/2" x 1/2" x 4" lg | 1 | 1 |
| 63 | Std. | Grease fitting 1/4" - 28 90 deg. | 2 | 2 |
| 64 | 300-44310 | Impeller cap screw 5/8" x 1 1/2" lg (ass. with lock-tite 242) + lock washer | 1 | 1 |
| 65 | 110-04743 | Impeller 30" ø 5 blades | 1 | 1 |
| 66 | UCFD208-24 | Bearing 1 1/2" + flange + 2 straight grease fitting | 3 | 3 |
| 67 | FD208 | Flange for 2 grease fitting | 3 | 3 |
| 68 | UC208-24 | Bearing 1 1/2" | 3 | 3 |
| 69 | 9281 | Sprocket 80A30 T 1 1/2" ø | 1 | 1 |
| 70 | 110-02061 | Auger P-920 | 1 | - |
| 70 | 110-05171 | Aufger P-920-98 | - | 1 |
| 71 | Std. | Linch pin 1/4" x 1 3/4" | 3 | 3 |
| 72 | 300-40310 | Bolt 1/2" NC x 1 1/2" lg + nylon locknut & flat washer | 2 | 2 |
| 73 | 110-01341 | Retaining bracket | 1 | 1 |
| 74 | 300-38400 | Bolt 7/16" NC x 3" lg + nylon locknut | 2 | 2 |
| 75 | 8149 | U-shaped UHMW approx 14" interior dia. | 1 | 1 |
| 76 | MLH 315 | "Orbit" hydraulic motor + cushion valve | opt. | opt. |
| 77 | 8369 | "Key" for hydraulic motor | opt. | opt. |
| 78 | 140-09571 | Spacer 1/8" x 1" x 3 1/4" lg for hydraulic motor | 2 | 2 |
| 79 | 336-38000 | Nut 7/16" NC | 4 | 4 |
| 80 | 110-20811 | Hydraulic motor support | 1 | 1 |
| 81 | 300-38310 | Bolt 7/16" NC x 1 1/2" lg + nylon locknut & flat washer | 4 | 4 |
| 82 | 300-36250 | Bolt 3/8" NC x 1" lg + lock washer | 4 | 4 |
| 83 | 323-36160 | Hexagonal socket set screw 3/8" NC x 3/8" lg | 2 | 2 |
| 84 | 110-04182 | Sprocket 9 teeth | 1 | 1 |
| 85 | 300-32220 | Bolt 1/4" NC x 3/4" lg + lock washer | 1 | 1 |
| 86 | 300-38280 | Bolt 7/16" NC x 1 1/4" lg + nylon locknut & flat washer | 2 | 2 |
| 87 | 130-29491 | Guard | 1 | 1 |
| 88 | 300-38250 | Bolt 7/16" NC x 1" lg + nylon locknut & flat washer 3/8" | 3 | 3 |
| 89 | 150-12741 | Flat washer | 4 | 4 |

SNOWBLOWER P-920TRC P-920TRC-98

170-03901R3



10

SNOWBLOWER P-920TRC P-920TRC-98 (cont'd)

| REF. | PART # | DESCRIPTION | QTY | |
|------|-----------|---|----------|-------------|
| | | | P-920TRC | P-920TRC-98 |
| 1 | 140-00812 | Reversible scraper blade 1/2" x 4" x 84 1/2" lg | 1 | |
| 1 | 140-00832 | Reversible scraper blade 1/2" x 4" x 90 1/2" lg | - | 1 |
| 2 | 319-38325 | Plow bolt 7/16" NC x 1 3/4" lg + nut & lock washer | 9 | 9 |
| 3 | 300-40310 | Bolt 1/2" NC x 1 1/2" lg + nylon locknut (thin) & flat washer 7/16" | 4 | 4 |
| 4 | 160-07311 | Aluminium-bronze bushing 1 1/2" i.d. x 1 7/8" o.d. x 1 1/4" lg | 1 | 1 |
| 5 | 110-04531 | Skid shoe (right side) | 1 | 1 |
| 6 | 9435 | U-shaped UHMW 3/8" x 7/8" x 97" lg | 1 | 1 |
| 7 | 8112 | Lock pin 1/4" | 2 | 2 |
| 8 | 140-03361 | Skid shoes lock | 2 | 2 |
| 9 | 302-46610 | Bolt 3/4" NF x 6 1/2" lg + nylon lock nut | 2 | 2 |
| 10 | 140-03441 | Brace 3/8" x 2 1/2" x 38 1/4" | 1 | 1 |
| 11 | 300-38280 | Bolt 7/16" NC x 1 1/4" lg + nylon locknut | 4 | 4 |
| 12 | 9428 | Adjustment plate for gear box + 4 nuts 1/2" NC | 1 | 1 |
| 13 | 110-12613 | Rotary drum 30" ø x 12" depth | 1 | 1 |
| 14 | 300-46340 | Bolt 3/4" NC x 2" lg + nylon lock nut | 8 | 8 |
| 15 | 300-44310 | Bolt 5/8" NC x 1 1/2" lg + lock washer | 8 | 8 |
| 16 | Std. | Hitch pin clip 5/32" | 1 | 1 |
| 17 | 8220 | Storage support pin | 1 | 1 |
| 18 | 9462 | Storage support | 1 | 1 |
| 19 | 110-01682 | Gear box support | 1 | 1 |
| 20 | 9432 | UHMW flat washer 3/16" x 8 7/8" i.d. x 12" o.d. | 1 | 1 |
| 21 | 9307 | Gear box | 1 | 1 |
| 22 | 140-05472 | 3-points side bar | 2 | 2 |
| 23 | 110-15214 | Right lower hitch | 1 | 1 |
| 24 | 302-46580 | Bolt 3/4" NF x 6" lg + nylon lock nut | 2 | 2 |
| 25 | 9269 | Pin category 2 (1 1/8" diameter) | 2 | 2 |
| 26 | 9225-EG | P.T.O. shaft T80 | 1 | 1 |
| 26 | 9475 | P.T.O. shaft T90 | opt. | opt. |
| 27 | 110-15213 | Left lower hitch | 1 | 1 |
| 28 | 300-46400 | Bolt 3/4" NC x 3" lg + nylon lock nut | 4 | 4 |
| 29 | 110-15311 | Upper hitch | 1 | 1 |
| 30 | 300-54460 | Bolt 1 1/4" NC x 4" lg + nylon lock nut | 1 | 1 |
| 31 | 6467 | Splined adaptor 1 3/4" - 20 splines (welded) | 1 | 1 |
| 32 | 110-18251 | Auger drive shaft 34 7/16" lg overall (includes no. 31 and 34) | 1 | - |
| 32 | 110-18261 | Auger drive shaft 37 7/16" lg overall (includes no. 31 and 34) | - | 1 |
| 33 | 300-34340 | Bolt 5/16" NC x 2" lg grade 5 + nylon locknut | 1 | 1 |
| 34 | 150-03911 | Bushing 5/16" i.d. x 1" o.d. x 3/4" lg (welded) | 2 | 2 |
| 35 | 110-18241 | Sprocket #80 + shearplate (includes no. 36 & 105) | 1 | 1 |
| 36 | 160-06901 | Aluminium-bronze bushing 1 3/4" i.d. x 2" o.d. x 1/2" lg | 1 | 1 |
| 37 | Std. | Grease fitting 1/4"-28 straight | 9 | 9 |
| 38 | 140-10761 | Back plate | 3 | 3 |
| 39 | 110-04521 | Skid shoe (left side) | 1 | 1 |
| 40 | 190-00431 | Chain #80 x 79" lg (79 links) | 1 | 1 |
| 40 | 26A80 | Connecting link #80 | 1 | 1 |
| 40 | 59-80 | Offset link #80 | 1 | 1 |
| 41 | 120-02855 | Frame P-920TRC | 1 | - |
| 41 | 120-02835 | Frame P-920-98TRC | - | 1 |
| 42 | 150-00332 | Idler clevis pin | 1 | 1 |
| 43 | 9287 | Idler sprocket #80 | 2 | 2 |
| 44 | 160-06511 | Spacer 3/4" i.d. x 1 1/4" o.d. x 3/4" lg | 2 | 2 |
| 45 | 110-01052 | Idler | 1 | 1 |

SNOWBLOWER P-920TRC P-920TRC-98 (cont'd)

| REF. | PART # | DESCRIPTION | QTY | |
|------|------------|--|----------|-------------|
| | | | P-920TRC | P-920TRC-98 |
| 46 | 110-01063 | Threaded rod for idler adjustment + nut 7/16" NC | 1 | 1 |
| 47 | 110-01071 | Threaded tube for idler adjustment | 1 | 1 |
| 48 | 9473 | Compression spring (black) | 1 | 1 |
| 49 | 150-05961 | Pin category 2 (1" diameter) (top link) | 1 | 1 |
| 50 | 110-10564 | Chain guard | 1 | 1 |
| 51 | 300-38250 | Bolt 7/16" NC x 1" lg + nylon lock nut | 2 | 2 |
| 52 | 300-38310 | Bolt 7/16" NC x 1 1/2" lg + two-way locknut | 4 | 4 |
| 53 | 376-40000 | Flat washer 5/8" | 1 | 1 |
| 54 | 346-45000 | Nylon locknut 5/8" NC thin | 1 | 1 |
| 55 | Std. | Roll pin 5/16" x 2" lg | 4 | 4 |
| 56 | 8374 | Adjustable clamp fastener (welded) | 1 | 1 |
| 57 | 110-21011 | Side shaft guard for P-920TRC | 1 | - |
| 57 | 110-28071 | Side shaft guard for P-920TRC-98 | - | 1 |
| 58 | 130-01382 | Inside guard (welded) | 1 | 1 |
| 59 | 300-36250 | Bolt 3/8" NC x 1" lg + nylon locknut & flat washer | 4 | 4 |
| 60 | 8925 | Inside guard (bolted) | 1 | 1 |
| 61 | 130-02111 | Deflector | 1 | 1 |
| 62 | 300-32310 | Bolt 1/4" x 1 1/2" lg + nylon locknut | 2 | 2 |
| 63 | 110-15201 | Hoses support | 1 | 1 |
| 64 | 302-46550 | Bolt 3/4" NF x 5 1/2" lg + nylon locknut | 2 | 2 |
| 65 | 300-40325 | Bolt 1/2" NC x 1 3/4" lg + nylon locknut & flat washer 7/16" | 8 | 8 |
| 66 | 110-12541 | Hinged P.T.O. shroud | 1 | 1 |
| 67 | 9285 | Square key 1/2" x 1/2" x 4" lg | 1 | 1 |
| 68 | Std. | Grease fitting 1/4" - 28 90 deg. | 2 | 2 |
| 69 | 300-44310 | Impeller cap screw 5/8" NC x 1 1/2" lg (ass. with lock-tite 242) + lock washer | 1 | 1 |
| 70 | 110-04743 | Impeller 30" ø 5 blades | 1 | 1 |
| 71 | 110-02061 | Auger P-920 | 1 | - |
| 71 | 110-05171 | Auger P-920-98 | - | 1 |
| 72 | UCFD208-24 | Bearing 1 1/2" + flange + 2 straight grease fitting | 3 | 3 |
| 73 | FD208 | Flange for 2 grease fitting | 3 | 3 |
| 74 | UC208-24 | Bearing 1 1/2" | 3 | 3 |
| 75 | 9281 | Sprocket 80A30 T 1 1/2" ø | 1 | 1 |
| 76 | 130-29521 | Stop block for drum lock (welded on drum) | 1 | 1 |
| 77 | MLH-315 | Hydraulic motor "Orbit" | opt. | opt. |
| 78 | 110-18441 | "Orbit" motor support + 4 nut 7/16" NC | 1 | 1 |
| 79 | 300-36250 | Bolt 3/8" x 1" lg + lock washer | 8 | 8 |
| 80 | 300-38310 | Bolt 7/16" NC x 1 1/2" lg + nylon locknut & flat washer | 8 | 8 |
| 81 | 8369 | Key for "Orbit" motor | opt. | opt. |
| 82 | 323-36160 | Hexagonal socket set screw 3/8" NC x 3/8" lg | 4 | 4 |
| 83 | 300-32220 | Bolt 1/4" NC x 3/4" lg + lock washer | 2 | 2 |
| 84 | 110-04721 | Sprocket 9 teeth | 1 | 1 |
| 85 | 300-38330 | Bolt 7/16" NC x 1 3/4" lg (full length thread) + lock nut | 1 | 1 |
| 86 | 130-08471 | Washer | 1 | 1 |
| 87 | 150-01542 | Latch pin - drum lock | 1 | 1 |
| 88 | 160-03952 | Body - drum lock (welded on frame) | 1 | 1 |
| 89 | 150-02561 | Pin | 1 | 1 |
| 90 | 130-29471 | Guard for ring gear segment | 1 | 1 |
| 91 | 300-40280 | Bolt 1/2" NC x 1 1/4" lg + nylon locknut + flat washer | 4 | 4 |
| 92 | Std. | Lynch pin 1/4" x 1 3/4" lg | 3 | 3 |
| 93 | 300-40310 | Bolt 1/2" NC x 1 1/2" lg + nylon locknut & flat washer | 2 | 2 |
| 94 | 110-01341 | Retaining bracket | 1 | 1 |
| 95 | 300-38400 | Bolt 7/16" NC x 3" lg + nylon locknut | 2 | 2 |

SNOWBLOWER P-920TRC P-920TRC-98 (cont'd)

| REF. | PART # | DESCRIPTION | QTY | |
|------|-----------|--|----------|-------------|
| | | | P-920TRC | P-920TRC-98 |
| 96 | 8149 | U-shaped UHMW approx. 14" interior dia. | 1 | 1 |
| 97 | 110-04182 | Sprocket 9 tooth..... | 1 | 1 |
| 98 | 300-38280 | Bolt 7/16" NC x 1 1/4" lg + nylon locknut & flat washer | 2 | 2 |
| 99 | 140-09571 | Spacer 1/8" x 1" x 3 1/4" lg for "Orbit" motor | 2 | 2 |
| 100 | 336-38000 | Nut 7/16" NC | 4 | 4 |
| 101 | 110-20811 | Hydraulic motor support | 1 | 1 |
| 102 | 130-29491 | Guard | 1 | 1 |
| 103 | 9688 | Compression spring | 1 | 1 |
| 104 | 300-38250 | Bolt 7/16" NC x 1" lg + nylon locknut & flat washer 3/8" | 3 | 3 |
| 105 | 150-12741 | Flat washer | 8 | 8 |

SNOWBLOWER P-98134 (suite)

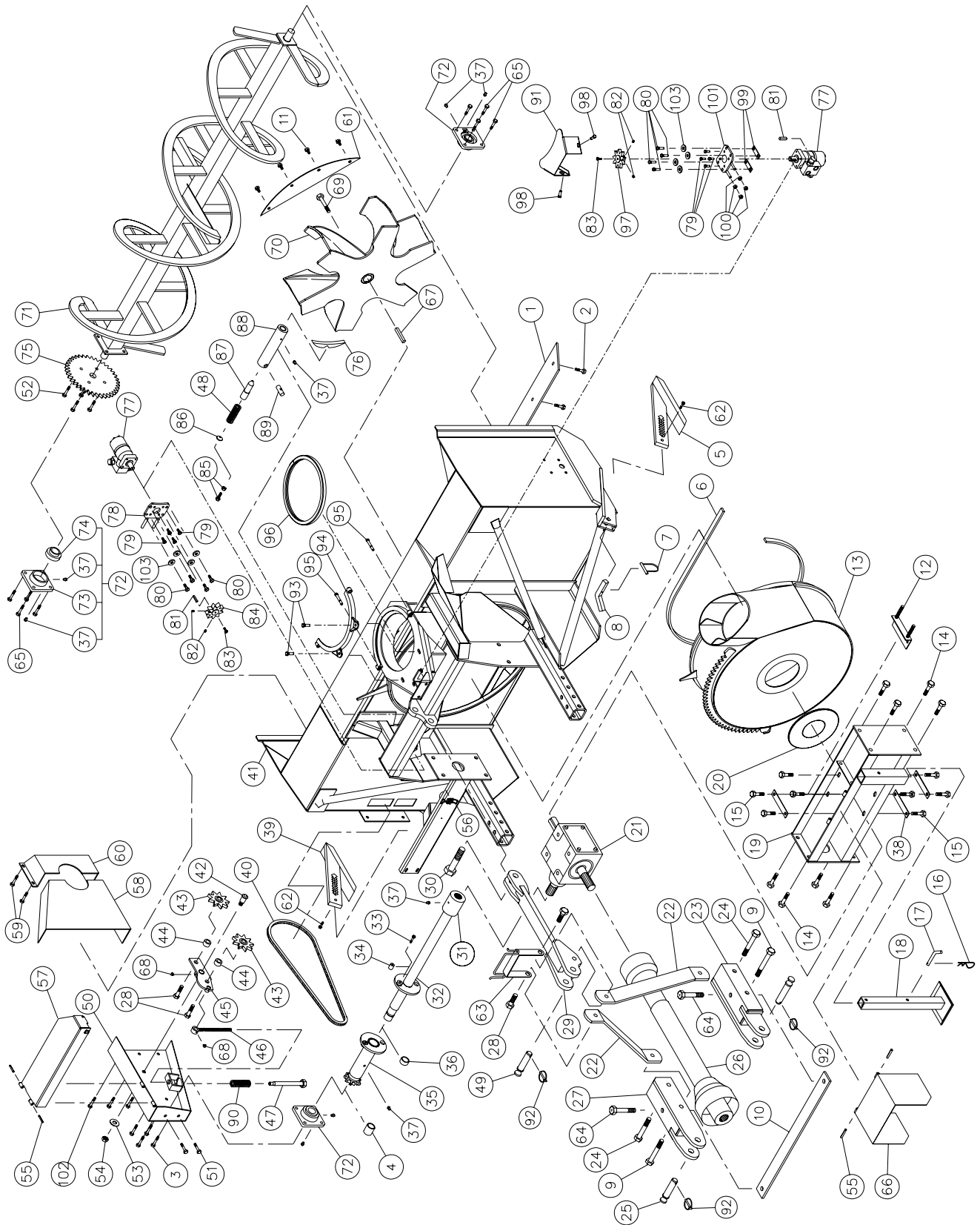
| REF. | PART # | DESCRIPTION | QTY |
|------|-----------|---|-----|
| 1 | 140-00832 | Reversible scraper blade 1/2" x 4" x 90 1/2" lg | 1 |
| 2 | 319-38325 | Plow bolt 7/16" NC x 1 3/4" lg + nut & lock washer | 9 |
| 3 | 140-10761 | Back plate | 3 |
| 4 | 302-46550 | Bolt 3/4" NF x 5 1/2" lg + nylon locknut | 2 |
| 5 | 110-04531 | Skid shoe (right side) | 1 |
| 6 | 8112 | Lock pin 1/4" | 2 |
| 7 | 140-03361 | Skid shoes lock | 2 |
| 8 | 302-46610 | Bolt 3/4" NF x 6 1/2" lg + nylon locknut | 2 |
| 9 | 9462 | Storage support | 1 |
| 10 | 300-44310 | Bolt 5/8" NC x 1 1/2" lg + lock washer | 8 |
| 11 | 8220 | Storage support pin | 1 |
| 12 | 9307 | Gear box | 1 |
| 13 | Std. | Hitch pin clip 5/32" | 1 |
| 14 | 9428 | Adjustment plate for gear box + 4 nuts 1/2" NC | 1 |
| 15 | 140-05592 | 3-points side bar | 2 |
| 16 | 110-15214 | Right lower hitch | 1 |
| 17 | 160-06901 | Aluminium-bronze bushing 1 3/4" i.d. x 2" o.d. x 1/2" lg | 1 |
| 18 | 9269 | Pin category 2 (1 1/8" diameter) | 2 |
| 19 | 9225 | PTO shaft T80 | 1 |
| 20 | 110-15213 | Left lower hitch | 1 |
| 21 | 300-46400 | Bolt 3/4" NC x 3" lg + nylon locknut | 4 |
| 22 | 110-15421 | Upper hitch | 1 |
| 23 | 6467 | Splined adaptor 1 3/4"-20 (welded) | 1 |
| 24 | 110-18261 | Auger drive shaft 37 3/16" lg overall (including no. 23 and 27) | 1 |
| 25 | 300-54460 | Bolt 1 1/4" NC x 4" lg + nylon locknut | 1 |
| 26 | 300-34340 | Bolt 5/16" NC x 2" lg grade 5 + nylon locknut | 1 |
| 27 | 150-03911 | Bushing 5/16" i.d. x 1" o.d. x 3/4" lg (welded) | 2 |
| 28 | 110-18241 | Sprocket #80 + shearplate (includes no. 17 & 29) | 1 |
| 29 | 160-07311 | Aluminium-bronze bushing 1 1/2" i.d. x 1 7/8" o.d. x 1 1/4" lg | 1 |
| 30 | Std. | Grease fitting 1/4"-28 straight | 8 |
| 31 | 300-40310 | Bolt 1/2" NC x 1 1/2" lg + nylon locknut thin & flat washer 7/16" | 4 |
| 32 | 110-04521 | Skid shoe (left side) | 1 |
| 33 | 190-00431 | Chain no. 80 x 79" lg (79 links) | 1 |
| 33 | 26A80 | Connecting link no. 80 | 1 |
| 33 | 59-80 | Offset link no. 80 | 1 |
| 34 | 120-05801 | Frame P-98134 | 1 |
| 35 | 150-00332 | Idler clevis pin | 1 |
| 36 | 9287 | Idler sprocket #80 (steel) | 2 |
| 37 | 160-06511 | Spacer 3/4" i.d. x 1 1/4" o.d. x 3/4" lg | 2 |
| 38 | 110-01052 | Idler | 1 |
| 39 | 110-01063 | Threaded rod for idler adjustment + nut 7/16" NC | 1 |
| 40 | 110-01071 | Threaded rtube for idler adjustment | 1 |
| 41 | 9688 | Compression spring | 1 |
| 42 | 150-05961 | Pin category 2 (1" diameter) (top link) | 1 |
| 43 | 110-10564 | Chain guard | 1 |
| 44 | 300-38250 | Bolt 7/16" NC x 1" lg + nylon locknut | 2 |
| 45 | 300-38310 | Bolt 7/16" NC x 1 1/2" lg + two-way locknut | 4 |
| 46 | 376-44000 | Rondelle plate 5/8" | 1 |
| 47 | 346-45000 | Flat washer 5/8" NC thin | 1 |
| 48 | Std. | Roll pin 5/16" x 2" lg | 2 |
| 49 | 8375 | Adjustable clamp fastener (welded) | 1 |
| 50 | 110-32671 | Side shaft guard | 1 |
| 51 | 130-53791 | Inside guard (welded) | 1 |
| 52 | 300-36250 | Bolt 3/8" NC x 1" lg + nylon locknut & flat washer | 4 |
| 53 | 8925 | Inside guard (bolted) | 1 |
| 54 | 140-03561 | Brace 3/8" x 2 1/2" x 42 1/4" lg | 1 |
| 55 | 300-38280 | Bolt 7/16" NC x 1 1/4" lg + nylon locknut | 4 |
| 56 | 130-05911 | Deflector | 1 |

SNOWBLOWER P-98134 (suite)

| REF. | PART # | DESCRIPTION | QTY |
|------|------------|--|------|
| 57 | 302-46580 | Bolt 3/4" NF x 6" lg + nylon locknut | 2 |
| 58 | 110-12541 | Hinged PTO shroud | 1 |
| 59 | 300-40325 | Bolt 1/2" NC x 1 3/4" lg + nylon locknut & flat washer 7/16" | 8 |
| 60 | 300-32310 | Bolt 1/4" NC x 1 1/2" lg + nylon locknut | 2 |
| 61 | 110-15201 | Hoses support | 1 |
| 62 | 9285 | Key 1/2" x 1/2" x 4" lg | 1 |
| 63 | Std. | Grease fitting 1/4" - 28 90 deg. | 2 |
| 64 | 300-44310 | Bolt 5/8" NC x 1 1/2" lg (ass. with lock-tite 242) + lock washer | 1 |
| 65 | 110-32482 | Impeller 34" ø 6 blades | 1 |
| 66 | UCFD208-24 | Bearing 1 1/2" + flange + 2 straight grease fitting | 3 |
| 67 | FD208 | Flange for 2 grease fitting | 3 |
| 68 | UC208-24 | Bearing 1 1/2" | 3 |
| 69 | 9281 | Sprocket 80A30 T 1 1/2" ø | 1 |
| 70 | 110-05171 | Auger | 1 |
| 71 | Std. | Lynch pin 1/4" x 1 3/4" | 3 |
| 72 | 300-40310 | Bolt 1/2" NC x 1 1/2" lg. + nylon locknut & flat washer | 2 |
| 73 | 110-01341 | Retaining bracket | 1 |
| 74 | 300-38400 | Bolt 7/16" NC x 3" lg. + nylon locknut | 2 |
| 75 | 8149 | U-shaped UHMW approx. 14" interior diameter | 1 |
| 76 | MLH 315 | "Orbit" hydraulic motor + cushion valve | opt. |
| 77 | 8369 | Key for hydraulic motor | opt. |
| 78 | 140-09571 | Spacer 1/8" x 1" x 3 1/4" lg for hydraulic motor | 2 |
| 79 | 336-38000 | Nut 7/16" NC | 4 |
| 80 | 110-20811 | Hydraulic motor support | 1 |
| 81 | 300-38310 | Bolt 7/16" NC x 1 1/2" lg + nylon locknut & flat washer | 4 |
| 82 | 300-36250 | Bolt 3/8" NC x 1" lg + lock washer | 4 |
| 83 | 323-36160 | Hexagonal socket set screw 3/8" NC x 3/8" lg | 2 |
| 84 | 110-04182 | Sprocket 9 teeth | 1 |
| 85 | 300-32220 | Bolt 1/4" NC x 3/4" lg + lock washer | 1 |
| 86 | 300-38280 | Bolt 7/16" NC x 1 1/4" lg + nylon locknut & flat washer | 2 |
| 87 | 130-29491 | Hydraulic motor guard | 1 |
| 88 | 300-38250 | Bolt 7/16" NC x 1" lg + nylon locknut & flat washer 3/8" | 3 |
| 89 | 150-12741 | Flat washer | 4 |

SNOWBLOWER P-98134TRC

170-04241R2



SNOWBLOWER P-98134TRC (suite)

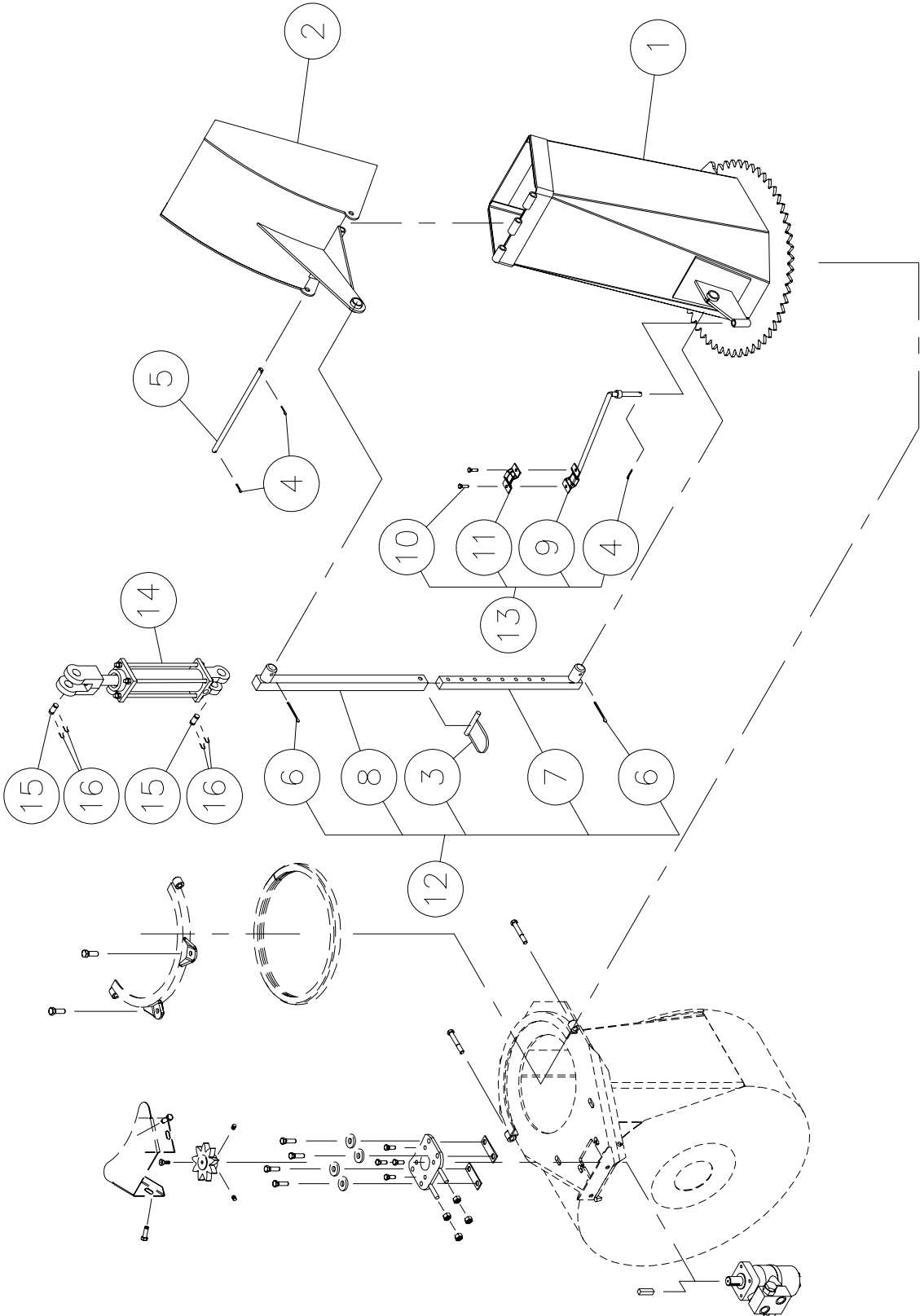
| REF. | PART # | DESCRIPTION | QTY |
|------|-----------|--|-----|
| 1 | 140-00832 | Reversible scraper blade 1/2" x 4" x 90 1/2" lg | 1 |
| 2 | 125-00717 | Plow bolt 7/16" NC x 1 3/4" lg + nut & lock washer | 9 |
| 3 | 300-40310 | Bolt 1/2" NC x 1 1/2" lg + nylon locknut mince & flat washer 7/16" | 4 |
| 4 | 160-07311 | Aluminium-bronze bushing 1 1/2" i.d. x 1 7/8" o.d. x 1 1/4" lg | 1 |
| 5 | 110-04531 | Skid shoe (right side) | 1 |
| 6 | 9430 | U-shaped UHMW 3/8" x 7/8" x 109 1/4" lg | 1 |
| 7 | 8112 | Lock pin 1/4" | 2 |
| 8 | 140-03361 | Skid shoes lock | 2 |
| 9 | 302-46610 | Bolt 3/4" NF x 6 1/2" lg + nylon locknut | 2 |
| 10 | 140-03561 | Brace 3/8" x 2 1/2" x 42 1/4" lg | 1 |
| 11 | 300-38280 | Bolt 7/16" NC x 1 1/4" lg + nylon locknut | 4 |
| 12 | 9428 | Adjustment plate for gear box + 6 nuts 1/2" NC | 1 |
| 13 | 110-31871 | Rotary drum 34" ø x 12" depth | 1 |
| 14 | 300-46340 | Bolt 3/4" NC x 2" lg + nylon locknut | 8 |
| 15 | 300-44310 | Bolt 5/8" NC x 1 1/2" lg + lock washer | 8 |
| 16 | Std. | Hitch pin clip 5/32" | 1 |
| 17 | 8220 | Storage support pin | 1 |
| 18 | 9462 | Storage support | 1 |
| 19 | 110-31951 | Gear box support | 1 |
| 20 | 9432 | U-shaped UHMW 3/16" x 8 7/8" i.d. x 12" o.d. | 1 |
| 21 | 9307 | Gear box | 1 |
| 22 | 140-05592 | 3-points side bar | 2 |
| 23 | 110-15214 | Right lower hitch | 1 |
| 24 | 302-46580 | Bolt 3/4" NF x 6" lg + nylon locknut | 2 |
| 25 | 9269 | Pin category 2 (1 1/8" diameter) | 2 |
| 26 | 9225 | PTO T80 | 1 |
| 27 | 110-15213 | Left lower hitch | 1 |
| 28 | 300-46400 | Bolt 3/4" NC x 3" lg + nylon locknut | 4 |
| 29 | 110-15531 | Upper hitch | 1 |
| 30 | 300-54460 | Bolt 1 1/4" NC x 4" lg + nylon locknut | 1 |
| 31 | 6467 | Splined adaptor 1 3/4" - 20 (welded) | 1 |
| 32 | 110-18261 | Auger drive shaft 37 3/16" lg overall (incl. no. 31 and 34) | 1 |
| 33 | 300-34340 | Bolt 5/16" NC grade 5 x 2" lg + nylon locknut | 1 |
| 34 | 150-03911 | Bushing 5/16" i.d. x 1" o.d. x 3/4" lg (welded) | 2 |
| 35 | 110-18241 | Sprocket #80 + shearplate (including no. 36 & 105) | 1 |
| 36 | 160-06901 | Aluminium-bronze bushing 1 3/4" d.i. x 2" d.e. x 1/2" lg | 1 |
| 37 | Std. | Grease fitting 1/4"-28 straight | 9 |
| 38 | 140-10761 | Back plate | 3 |
| 39 | 110-04521 | Skid shoe (left side) | 1 |
| 40 | 190-00431 | Chain no. 80 x 79" lg (79 links) | 1 |
| 40 | 26A80 | Connecting link no. 80 | 1 |
| 40 | 59-80 | Offset link no. 80 | 1 |
| 41 | 120-05821 | Frame P-98134TRC | 1 |
| 42 | 150-00332 | Idler clevis pin | 1 |
| 43 | 9287 | Idler sprocket #80 | 2 |
| 44 | 160-06511 | Spacer 3/4" i.d. x 1 1/4" o.d. x 3/4" lg | 2 |
| 45 | 110-01052 | Idler | 1 |
| 46 | 110-01063 | Threaded rod for idler adjustment + nut 7/16" NC | 1 |
| 47 | 110-01071 | Threaded tube for idler adjustment | 1 |
| 48 | 9473 | Compression spring (black) | 1 |
| 49 | 150-05961 | Pin category 2 (1" diameter) (top link) | 1 |
| 50 | 110-10564 | Chain guard | 1 |
| 51 | 300-38250 | Bolt 7/16" NC x 1" lg + nylon locknut | 2 |
| 52 | 300-38310 | Bolt 7/16" NC x 1 1/2" lg + two-way locknut | 4 |
| 53 | 376-40000 | Flat washer 5/8" | 1 |
| 54 | 346-45000 | Nylon locknut 5/8" NC thin | 1 |

SNOWBLOWER P-98134TRC (suite)

| REF. | PART # | DESCRIPTION | QTY |
|------|------------|--|------|
| 55 | Std. | Roll pin 5/16" x 2" lg | 4 |
| 56 | 8374 | Adjustable clamp fastener (welded) | 1 |
| 57 | 110-32131 | Side shaft guard for P-98134TRC | 1 |
| 58 | 130-53791 | GInside guard (bolted) | 1 |
| 59 | 300-36250 | Bolt 3/8" NC x 1" lg + nylon locknut & flat washer | 4 |
| 60 | 8925 | Garde intérieur (bolted) | 1 |
| 61 | 130-05911 | Deflector | 1 |
| 62 | 300-32310 | Bolt 1/4" x 1 1/2" lg + nylon locknut | 2 |
| 63 | 110-15201 | Hoses support | 1 |
| 64 | 302-46520 | Bolt 3/4" NF x 5 1/2" lg + nylon locknut | 2 |
| 65 | 300-40325 | Bolt 1/2" NC x 1 3/4" lg + nylon locknut & flat washer 7/16" | 8 |
| 66 | 110-12541 | Hinged PTO shroud | 1 |
| 67 | 9285 | Key 1/2" x 1/2" x 4" lg | 1 |
| 68 | Std. | Grease fitting 1/4"-28 90 deg | 2 |
| 69 | 300-44310 | Bolt 5/8" NC x 1 1/2" lg (ass. with lock-tite 242) + lock washer | 1 |
| 70 | 110-32482 | Impeller 34" ø 6 blades | 1 |
| 71 | 110-05171 | Auger P-920-98 | 1 |
| 72 | UCFD208-24 | Bearing 1 1/2" + flange 2 straight grease fitting | 3 |
| 73 | FD208 | Flange for 2 grease fitting | 3 |
| 74 | UC208-24 | Bearing 1 1/2" | 3 |
| 75 | 9281 | Sprocket 80A30 T 1 1/2" ø | 1 |
| 76 | 130-08441 | Stop block for drum lock (welded on drum) | 1 |
| 77 | MLH-315 | Hydraulic motor "Orbit" + cushion valve | opt. |
| 78 | 110-18441 | "Orbit" support motor + 4 nuts 7/16" NC | 1 |
| 79 | 300-36250 | Bolt 3/8" x 1" lg + lock washer | 4 |
| 80 | 300-38310 | Bolt 7/16" NC x 1 1/2" lg + nylon locknut & flat washer | 4 |
| 81 | 8369 | Key for "Orbit" motor | opt. |
| 82 | 323-36160 | Hexagonal socket set screw 3/8" NC x 3/8" lg | 4 |
| 83 | 300-32220 | Bolt 1/4" NC x 3/4" lg + lock washer | 2 |
| 84 | 110-04721 | Sprocket 9 teeth | 1 |
| 85 | 300-38330 | Bolt 7/16" NC x 1 3/4" lg (full length thread) + lock nut | 1 |
| 86 | 130-08471 | Washer | 1 |
| 87 | 150-01542 | Latch pin - drum lock | 1 |
| 88 | 160-03952 | Body - drum lock (welded on frame) | 1 |
| 89 | 150-02561 | Pin | 1 |
| 90 | 9688 | Compression spring | 1 |
| 91 | 130-29491 | Hydraulic motor guard | 1 |
| 92 | Std. | Lynch pin 1/4" x 1 3/4" | 3 |
| 93 | 300-40310 | Bolt 1/2" NC x 1 1/2" lg + nylon locknut & flat washer | 2 |
| 94 | 110-01341 | Retaining bracket | 1 |
| 95 | 300-38400 | Bolt 7/16" NC x 3" lg + nylon locknut | 2 |
| 96 | 8149 | U-shaped UHMW approx. 14" interior diameter | 1 |
| 97 | 110-04182 | Sprocket 9 teeth | 1 |
| 98 | 300-38280 | Bolt 7/16" NC x 1 1/4" lg + nylon locknut & flat washer | 2 |
| 99 | 140-09571 | Spacer 1/8" x 1" x 3 1/4" lg for hydraulic motor | 2 |
| 100 | 336-38000 | Nut 7/16" NC | 8 |
| 101 | 110-20811 | Hydraulic motor support | 1 |
| 102 | 300-38250 | Bolt 7/16" NC x 1" lg + nylon locknut & flat washer 3/8" | 2 |
| 103 | 150-12741 | Flat washer | 8 |

CHUTE CST-7486

170-03271



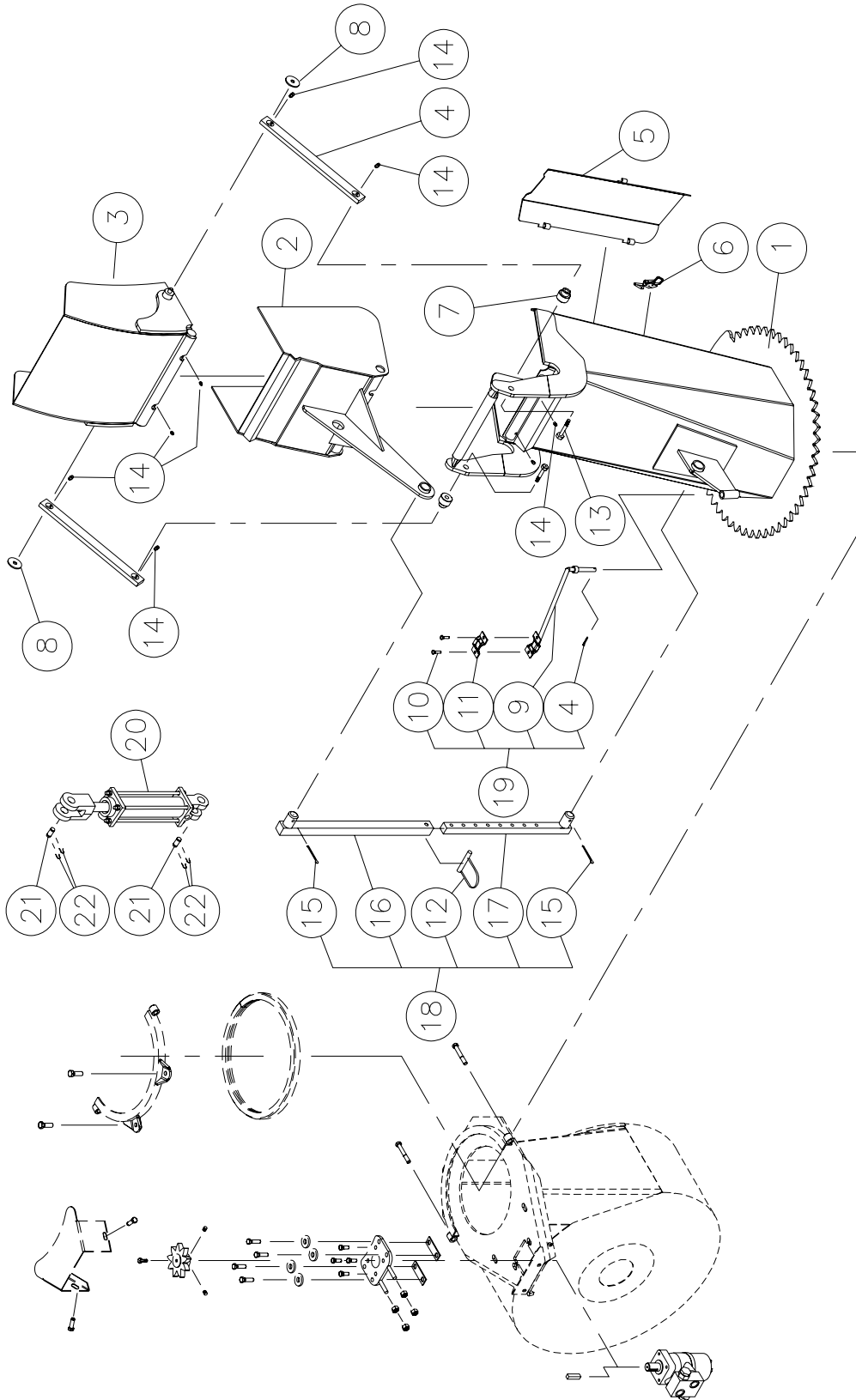
10

CHUTE CST-7486

| REF. | PART # | DESCRIPTION | QTY |
|------|-----------|---|------|
| 1 | 110-04401 | Chute base | 1 |
| 2 | 8370 | Chute deflector | 1 |
| 3 | 8112 | Lock pin 1/4" (1) | opt. |
| 4 | Std. | Cotter pin 1/8" x 1" lg | 3 |
| 5 | 8210 | Chute deflector pin | 1 |
| 6 | Std. | Cotter pin 5/32" x 2" lg (2) | opt. |
| 7 | 8145 | Chute adjusting rod (1) | opt. |
| 8 | 8146 | Chute adjusting tube (1) | opt. |
| 9 | 110-01112 | Mounting support plate | 1 |
| 10 | 300-32250 | Bolt 1/4" NC x 1" lg. + nylon locknut | 2 |
| 11 | 140-13071 | Hoses mounting plate | 1 |
| 12 | T-74104 | Manual telescopic tube | opt. |
| 13 | TSB-74104 | Hose support for deflector cylinder | opt. |
| 14 | 25TR08 | Cylinder | opt. |
| 15 | 6004 | Clevis pin 1" x 3 1/8" lg (2) | opt. |
| 16 | Std. | Hairpin cotter 7/8" (4) | opt. |

SEMI-INDUSTRIAL CHUTE PSIG-7486

170-03393R1

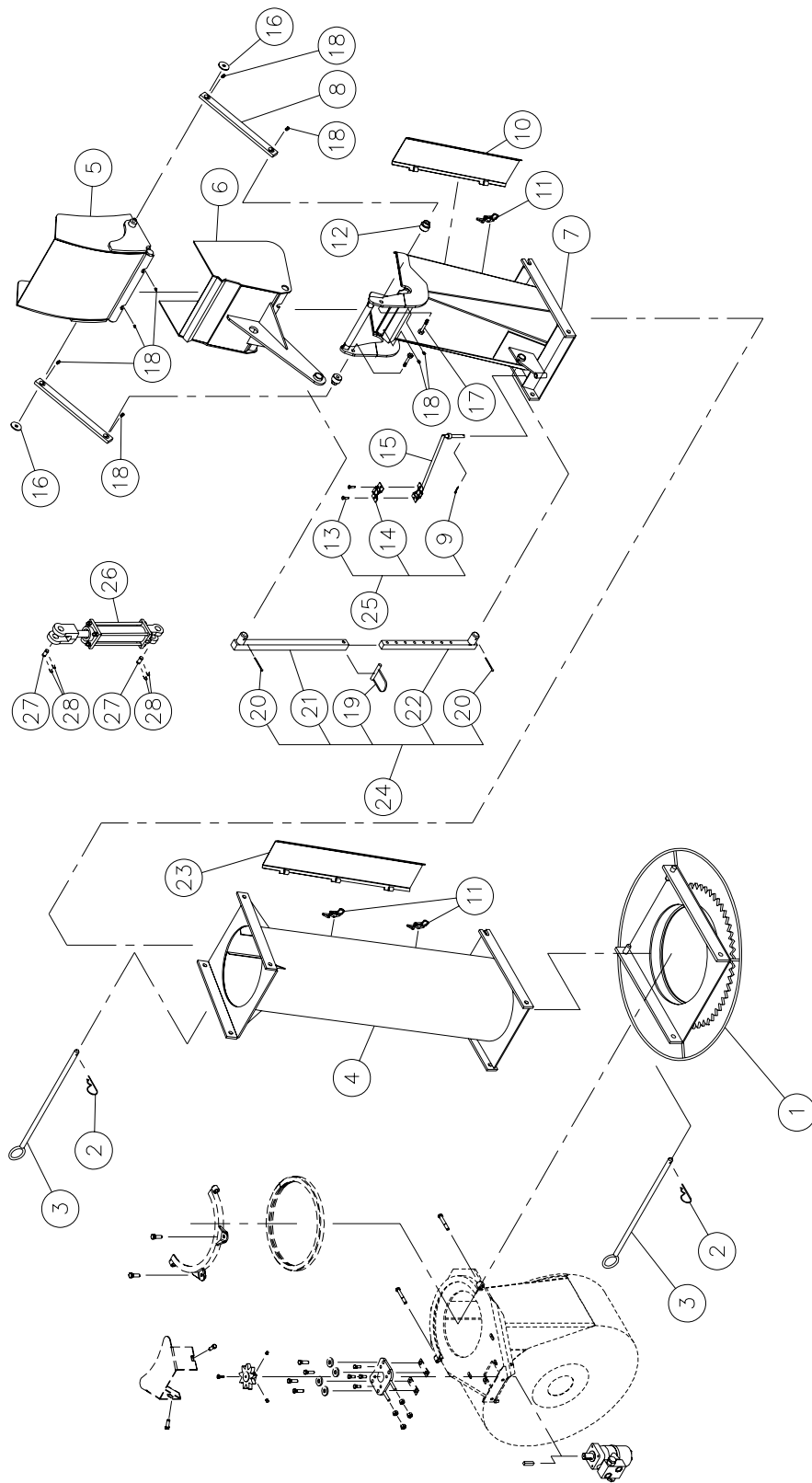


SEMI-INDUSTRIAL CHUTE PSIG-7486

| REF. | PART # | DESCRIPTION | QTY |
|------|-----------|--|------|
| 1 | 110-22503 | Chute base | 1 |
| 2 | 110-22521 | Lower chute deflector | 1 |
| 3 | 110-22511 | Upper chute deflector | 1 |
| 4 | 140-14041 | Connecting rod | 2 |
| 5 | 110-22893 | Access panel..... | 1 |
| 6 | 8376 | Adjustable clamp fastener (welded) | 1 |
| 7 | 150-05311 | Spacer for connecting rod | 2 |
| 8 | 378-36500 | Washer | 2 |
| 9 | 110-01112 | Hoses support | 1 |
| 10 | 300-32250 | Bolt 1/4" NC x 1" lg + nylon locknut | 2 |
| 11 | 140-13071 | Hose hold down | 1 |
| 12 | 8112 | Lock pin 1/4" (1) | opt. |
| 13 | 300-40380 | Bolt 1/2" NC x 2 3/4" lg + nylon lock nut & washer | 2 |
| 14 | Std. | Grease firtting 1/4"-28 straight | 8 |
| 15 | Std. | Cotter pin 5/32" x 2" lg (2) | opt. |
| 16 | 8146 | Chute adjusting tube (1) | opt. |
| 17 | 8145 | Chute adjusting rod (1) | opt. |
| 18 | T-74104 | Manual telescopic tube | opt. |
| 19 | TSB-74104 | Hose support for deflector cylinder | opt. |
| 20 | 25TR08 | Cylinder | opt. |
| 21 | 6004 | Clevis pin 1" x 3 1/8" lg (2) | opt. |
| 22 | Std. | Hairpin cotter 7/8" (4) | opt. |

INDUSTRIAL CHUTE PCG-7486

170-03413R1



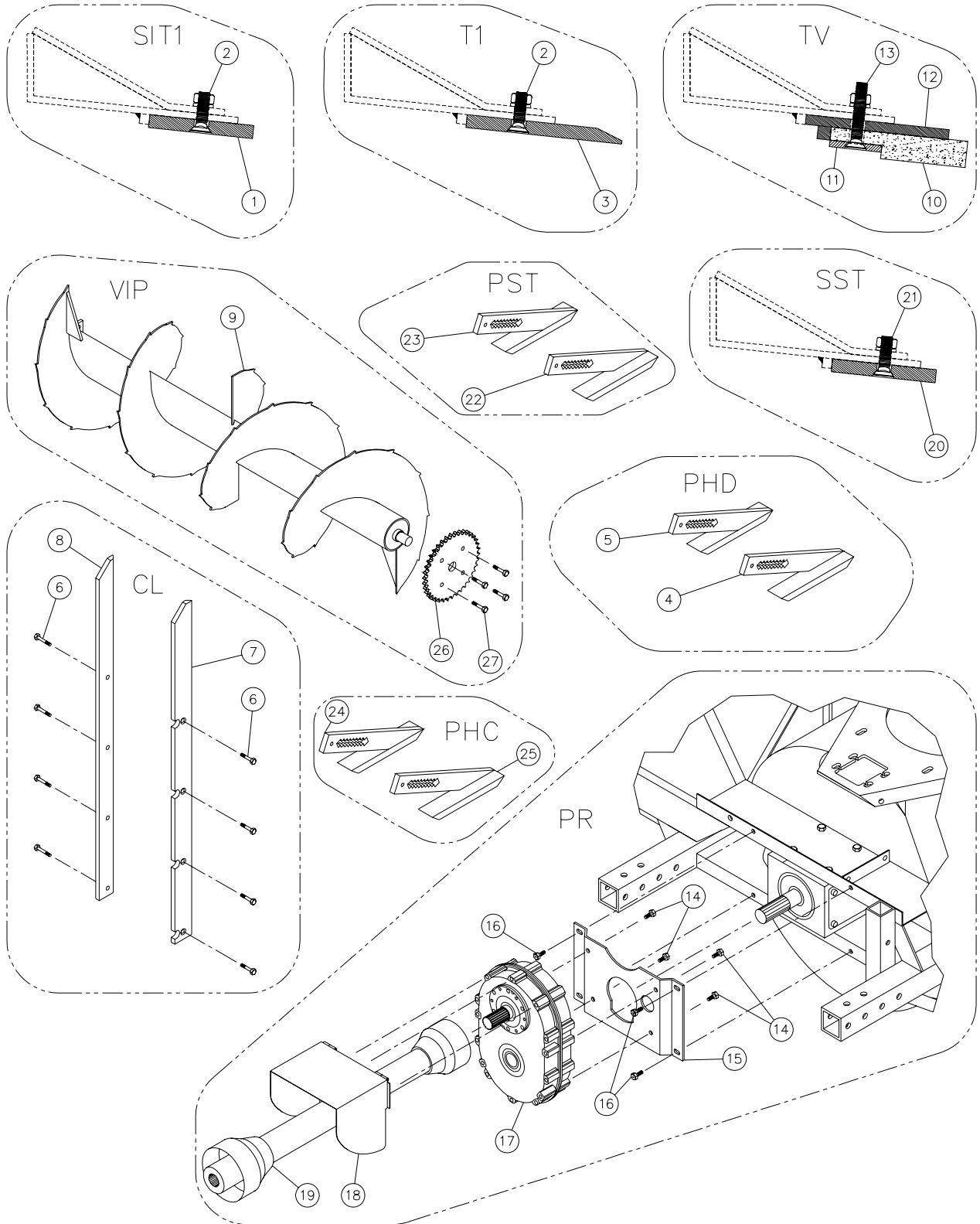
10

INDUSTRIAL CHUTE PCG-7486

| REF. | PART # | DESCRIPTION | QTY |
|------|-----------|---|------|
| 1 | 110-04441 | Chute adaptor with quick attach | 1 |
| 2 | Std. | Hitch pin clip 5/32" | 2 |
| 3 | 8200 | Pin for quick attach (adaptor & extension) | 2 |
| 4 | 110-22961 | Extension 48" PRP-7486 | opt. |
| 4 | 110-23051 | Extension 24" PRP-7486-2 | opt. |
| 5 | 110-22511 | Upper deflector | 1 |
| 6 | 110-22521 | Lower deflector | 1 |
| 7 | 110-22563 | Chute base | 1 |
| 8 | 140-14041 | Connection rod | 2 |
| 9 | Std. | Cotter pin 1/8" x 1" lg | 1 |
| 10 | 110-22893 | Access panel | 1 |
| 11 | 8376 | Adjustable clamp fastener (welded) | 1 |
| 12 | 150-05311 | Spacer for connecting rod | 2 |
| 13 | 300-32250 | Bolt 1/4" NC x 1" lg. + nylon locknut | 2 |
| 14 | 140-13071 | Hoses mounting plate | 1 |
| 15 | 110-01112 | Mounting support plate | 1 |
| 16 | 378-36500 | Washer | 2 |
| 17 | 300-40380 | Bolt 1/2" NC x 2 3/4" lg + nylon locknut & washer | 2 |
| 18 | Std. | Grease fitting 1/4"-28 straight | 8 |
| 19 | 8112 | Lock pin 1/4" (1) | opt. |
| 20 | Std. | Cotter pin 5/32" X 2" lg (2) | opt. |
| 21 | 8146 | Chute adjusting tube (1) | opt. |
| 22 | 8145 | Chute adjusting rod (1) | opt. |
| 23 | 110-23022 | Access panel for extension PRP-7486 | opt. |
| 23 | 110-23062 | Access panel for extension PRP-7486-2 | opt. |
| 24 | T-74104 | Manual telescopic tube | opt. |
| 25 | TSB-74104 | Hose support for deflector cylinder | opt. |
| 26 | 25TR08 | Cylinder | opt. |
| 27 | 6004 | Clevis pin 1" x 3 1/8" lg (2) | opt. |
| 28 | Std. | Hairpin cotter 7/8" (4) | opt. |

OPTIONS

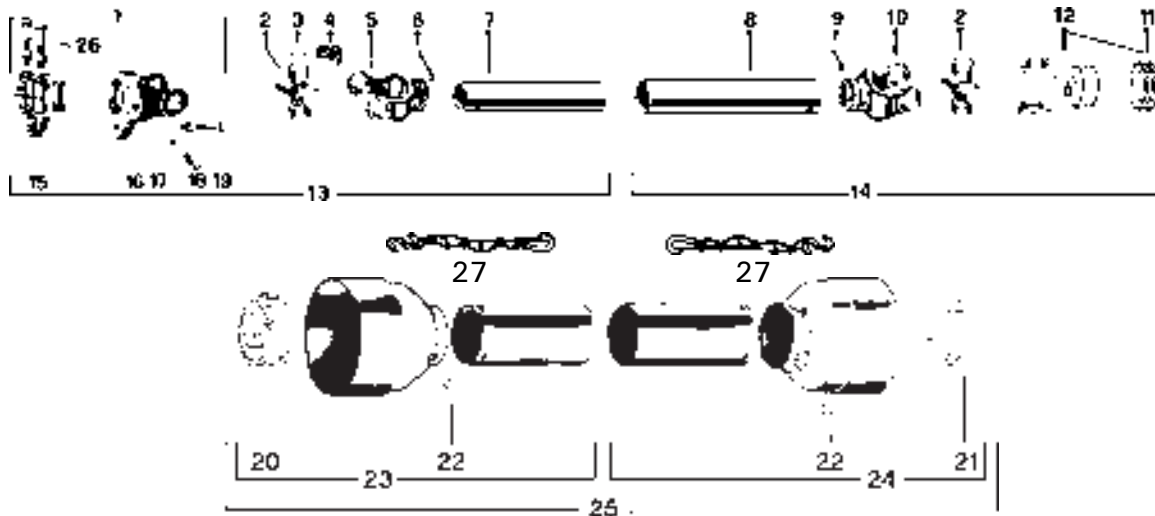
170-02841R2



OPTIONS

| REF. | PART # | DESCRIPTION | P-920 | P-920 TRC | P-920-98 | P-920TRC-98 | P-98134 | P-98134TRC |
|------|-----------|--|-------|-----------|----------|-------------|---------|------------|
| 1 | 140-04081 | Scraper blade (hard. steel, not sharpened, reversible) 1/2" x 4" x 84 1/2" . | 1 | 1 | - | - | - | - |
| 1 | 140-04091 | Scraper blade (hard. steel, not sharpened, reversible) 1/2" x 4" x 90 1/2" . | - | - | 1 | 1 | 1 | 1 |
| 2 | 319-38325 | Plow bolt 7/16" NC x 1 3/4" lg + nut & lock washer | 9 | 9 | 9 | 9 | 9 | 9 |
| 3 | 140-04141 | Scraper blade (hardened steel, sharpened, not reversible) 1/2" x 6" x 84 1/2" . | 1 | 1 | - | - | - | - |
| 3 | 140-04151 | Scraper blade (hardened steel, sharpened, not reversible) 1/2" x 6" x 90 1/2" . | - | - | 1 | 1 | 1 | 1 |
| 4 | 110-05511 | Carbon steel skid shoe (right side) | 1 | 1 | 1 | 1 | 1 | 1 |
| 5 | 110-04811 | Carbon steel skid shoe (left side) | 1 | 1 | 1 | 1 | 1 | 1 |
| 6 | 319-38310 | Plow bolt 7/16" NC x 1 1/2" lg + nut & lock washer | 8 | 8 | 8 | 8 | 8 | 8 |
| 7 | 130-08321 | Lateral blade (right side) | 1 | 1 | 1 | 1 | 1 | 1 |
| 8 | 130-08322 | Lateral blade (left side) | 1 | 1 | 1 | 1 | 1 | 1 |
| 9 | 9425 | Full flight spiked auger 23" dia. x 89 5/8" | 1 | 1 | - | - | - | - |
| 9 | 110-21131 | Full flight spiked auger 23" dia. x 95 5/8" hors tout | - | - | 1 | 1 | 1 | 1 |
| 10 | 190-01331 | Scraper blade, TIVAR not reversible 1" x 5 1/4" x 84 1/2" | 1 | 1 | - | - | - | - |
| 10 | 190-01321 | Scraper blade, TIVAR not reversible 1" x 5 1/4" x 90 1/2" | - | - | 1 | 1 | 1 | 1 |
| 11 | 140-03991 | TIVAR blade bolting plate 1/4" x 2" x 84 1/2" | 1 | 1 | - | - | - | - |
| 11 | 140-03981 | TIVAR blade bolting plate 1/4" x 2" x 90 1/2" | - | - | 1 | 1 | 1 | 1 |
| 12 | 110-10391 | TIVAR blade holder 3/8" x 5 1/2" x 84 1/2" | 1 | 1 | - | - | - | - |
| 12 | 110-10381 | TIVAR blade holder 3/8" x 5 1/2" x 90 1/2" | - | - | 1 | 1 | 1 | 1 |
| 13 | 319-38370 | Plow bolt 7/16" NC x 2 1/2" lg + nut & lock washer | 9 | 9 | 9 | 9 | 9 | 9 |
| 14 | Std. | Bolt 1/2" NC x 1 1/4" lg + lock washer | 4 | 4 | 4 | 4 | 4 | 4 |
| 15 | 130-19521 | Mounting plate for speed reducer 1000 to 540 | 1 | 1 | 1 | 1 | 1 | 1 |
| 16 | 300-40310 | Bolt 1/2" NC x 1 1/2" lg + nylon locknut & flat washer (x) | 4 | 4 | 4 | 4 | 4 | 4 |
| 17 | 9575 | Speed reducer 1000@540 "triple chain" | 1 | 1 | 1 | 1 | 1 | 1 |
| 18 | 110-12961 | Hinged PTO shroud for speed reducer 1000@540 | 1 | 1 | 1 | 1 | 1 | 1 |
| 19 | 9569 | P.T.O. T80, QD 1 3/8" -21 splines, SBI 1 3/4"-20 | 1 | 1 | 1 | 1 | 1 | 1 |
| 19 | 9569-1 | P.T.O. T80, QD 1 3/4"-20 splines, SBI 1 3/4"-20 | 1 | 1 | 1 | 1 | 1 | 1 |
| 19 | 9475-1 | P.T.O. T90, QD 1 3/8"-21 splines, SBI 1 3/4"-20 | 1 | 1 | 1 | 1 | 1 | 1 |
| 19 | 9475-2 | P.T.O. T90, QD 1 3/4"-20 splines, SBI 1 3/4"-20 | 1 | 1 | 1 | 1 | 1 | 1 |
| 20 | 140-15041 | Scraper blade (stainless steel, not sharpened, reversible) 1/2" x 4" x 84 1/2" . | 1 | 1 | - | - | - | - |
| 20 | 140-15051 | Scraper blade (stainless steel, not sharpened, reversible) 1/2" x 4" x 90 1/2" . | - | - | 1 | 1 | 1 | 1 |
| 21 | 333-40340 | Hexagonal socket set screw 1/2" NC x 2" lg (inox.) + nut & lock washer | opt. | opt. | opt. | opt. | opt. | opt. |
| 21 | 319-38325 | Plow bolt 7/16" NC x 1 3/4" lg + nut & lock washer | 9 | 9 | 9 | 9 | 9 | 9 |
| 22 | 110-24831 | Stainless steel skid shoe (right side) | 1 | 1 | 1 | 1 | 1 | 1 |
| 23 | 110-24832 | Stainless steel skid shoe (left side) | 1 | 1 | 1 | 1 | 1 | 1 |
| 24 | 110-32871 | Skid shoe with carbide sole (left side) | 1 | 1 | 1 | 1 | 1 | 1 |
| 25 | 110-32872 | Skid shoe with carbide sole (right side) | 1 | 1 | 1 | 1 | 1 | 1 |
| 26 | 9281 | Sprocket 80A30T 1 1/2" | 1 | 1 | 1 | 1 | 1 | 1 |
| 27 | 300-38310 | Bolt 7/16" NC x 1 11/2" lg + two way locknut | 4 | 4 | 4 | 4 | 4 | 4 |

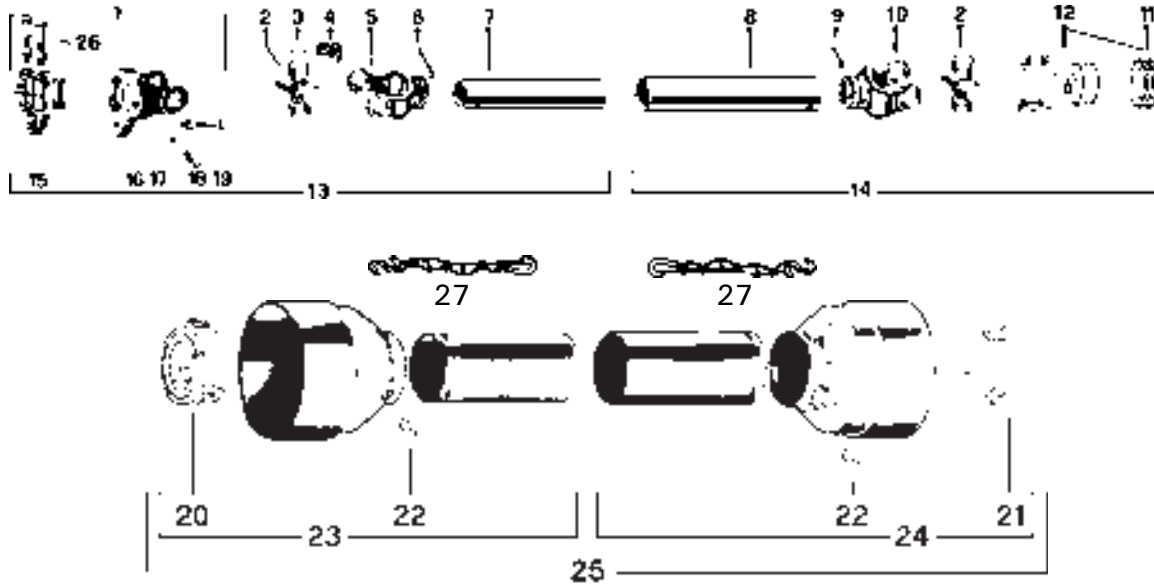
P.T.O. SHAFT # 9225-EG & 9569 (T80)



| REF. | PART # | DESCRIPTION | QTY | |
|---------|----------|---|---------|------|
| | | | 9225-EG | 9569 |
| or [1 | 9570 | Safety shear yoke M10 (2 bolts) 1 3/4" - 20 splines | - | 1 |
| 1 | 9453 | Safety shear yoke M12 (2 bolts) 1 3/4" - 20 splines | 1 | 1 |
| 2 | 9208 | U-joint + 4 retaining rings + 1 grease fitting | 2 | 2 |
| 3 | 9454 | Retaining ring | 8 | 8 |
| 4 | 8110 | Grease fitting | 2 | 2 |
| 5 | 9214 | Yoke for inner tube | 1 | 1 |
| 6 | 8075 | Stopper for inner tube | 1 | 1 |
| 7 | 9212 | Inner tube | 1 | 1 |
| 8 | 9211 | Outer tube | 1 | 1 |
| 9 | 9210-E | Stopper for outer tube | 1 | 1 |
| 10 | 9209 | Yoke for outer tube | 1 | 1 |
| 11 | 8363 | Collar kit | 1 | 1 |
| 11 | 8364 | Collar kit | - | opt. |
| 12 | 9455 | Yoke with hole 1 3/8"-6 splines + yoke stopper | 1 | - |
| 12 | 9463 | Yoke with hole 1 3/8"-21 splines + yoke stopper | - | 1 |
| 12 | 9224 | Yoke with hole 1 3/4"-20 splines + yoke stopper | - | opt. |
| 13 | 9456 | P.T.O. section, SBI 1 3/4"-20, inner part, with protector | 1 | 1 |
| 14 | 9457 | P.T.O. section, QD 1 3/8"-6, outer part, with protector | 1 | - |
| 14 | 9457-2 | P.T.O. section, QD 1 3/8"-21, outer part, with protector | - | 1 |
| or [15 | 9458 | Adaptor 1 3/4"-20 splines (2 bolts) (hole 12 mm) | 1 | 1 |
| 15 | 9571 | Adaptor 1 3/4"-20 splines (2 bolts) (hole 10 mm) | - | 1 |
| or [16 | 9204 | Yoke and shearplate (hole 12 mm) | 1 | 1 |
| 16 | 9572 | Yoke and shearplate (hole 10 mm) | - | 1 |
| 17 | 9205 | Ball | 17 | 17 |
| 18 | 8071 | Grease fitting | 1 | 1 |
| 19 | 9207 | Safety shear bolt M12 x 65 mm | 1 | - |
| or [19 | 9207-375 | Safety shear bolt M12 x 65 mm diam. 3/8" | - | 1 |
| 19 | 8218 | Safety shear bolt M10 x 60 mm | - | 1 |
| 20 | 9459 | Bearing ring for inner guard tube | 1 | 1 |
| 21 | 9460 | Bearing ring for outer guard tube | 1 | 1 |
| 22 | 8109 | Stopper | 6 | 6 |
| 23 | 9221 | Inner shield | 1 | 1 |
| 24 | 9220 | Outer shield | 1 | 1 |
| 25 | 9222 | Complete shield | 1 | 1 |
| 26 | 9662 | Bolt M16 x 80mm + lock nut | 2 | 2 |
| 27 | 8308 | Safety chain | 2 | 2 |

10

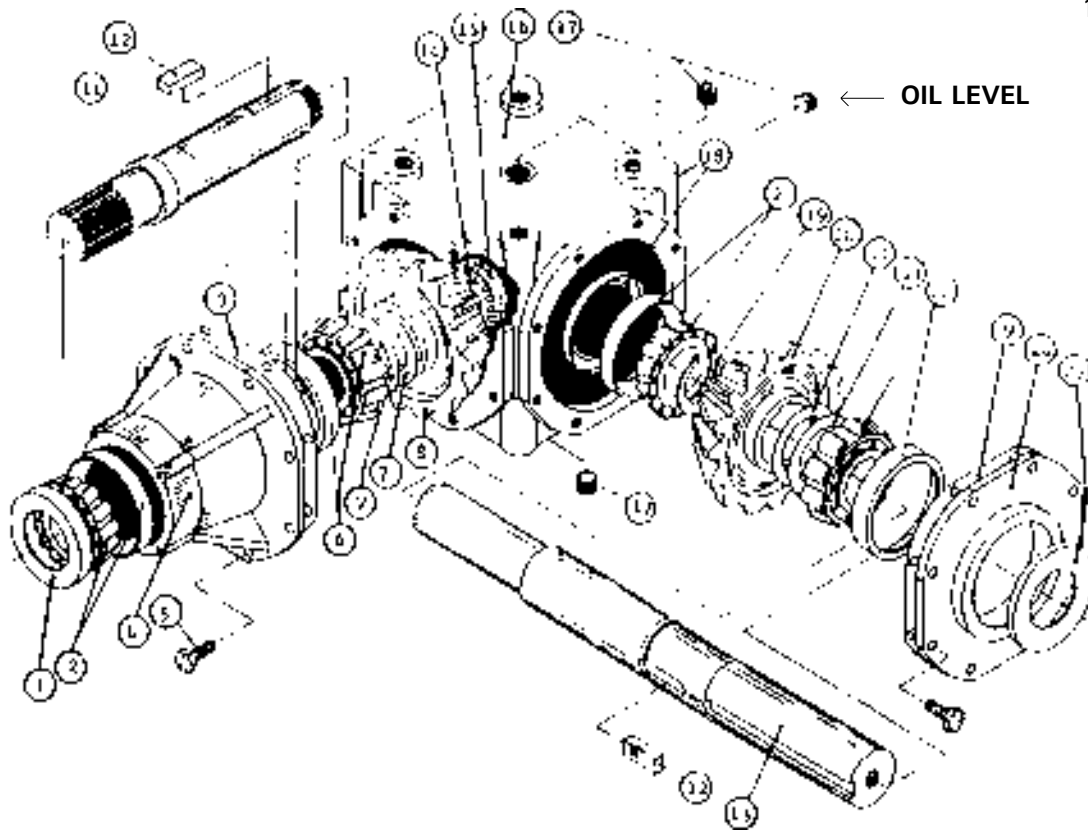
P.T.O. SHAFT # 9475, 9475-1 & 9475-2 (T90)



| REF. | PART # | DESCRIPTION | QTY | | |
|------|----------|---|------|--------|--------|
| | | | 9475 | 9475-1 | 9475-2 |
| 1 | 9476 | Safety shear yoke (2 bolts) 1 3/4" - 20 splines | 1 | 1 | 1 |
| 2 | 9477 | U-joint + 4 retaining rings + 1 grease fitting | 2 | 2 | 2 |
| 3 | 9478 | Retaining ring | 8 | 8 | 8 |
| 4 | 8110 | Grease fitting | 2 | 2 | 2 |
| 5 | 9479 | Yoke for inner tube | 1 | 1 | 1 |
| 6 | 9210 | Stopper for tube | 1 | 1 | 1 |
| 7 | 9212 | Inner tube | 1 | 1 | 1 |
| 8 | 9211 | Outer tube | 1 | 1 | 1 |
| 9 | 9210 | Stopper for tube | 1 | 1 | 1 |
| 10 | 9480 | Yoke for outer tube | 1 | 1 | 1 |
| 11 | 8363 | Collar kit | 1 | 1 | - |
| 11 | 8364 | Collar kit | - | - | 1 |
| 12 | 9481 | Yoke with hole 1 3/8"-6 splines + yoke stopper | 1 | - | - |
| 12 | 9482 | Yoke with hole 1 3/8"-21 splines + yoke stopper | - | 1 | - |
| 12 | 9483 | Yoke with hole 1 3/4"-20 splines + yoke stopper | - | - | 1 |
| 13 | 9484 | P.T.O. section, SBI 1 3/4"-20, inner part, with protector | 1 | 1 | 1 |
| 14 | 9485 | P.T.O. section, QD 1 3/8"-6, outer part, with protector | 1 | - | - |
| 14 | 9485-1 | P.T.O. section, QD 1 3/8"-21, outer part, with protector | - | 1 | - |
| 14 | 9485-2 | P.T.O. section, QD 1 3/4"-20, outer part, with protector | - | - | 1 |
| 15 | 9486 | Adaptor 1 3/4"-20 splines (2 bolts) | 1 | 1 | 1 |
| 16 | 9487 | Yoke and shearplate | 1 | 1 | 1 |
| 17 | 9205 | Ball | 24 | 24 | 24 |
| 18 | 8071 | Grease fitting | 1 | 1 | 1 |
| 19 | 9207 | Safety shear bolt M12 x 65mm | 1 | - | - |
| 19 | 9207-375 | Safety shear bolt M12 x 65mm diam 3/8" | - | 1 | 1 |
| 20 | 9459 | Bearing ring for inner guard tube | 1 | 1 | 1 |
| 21 | 9460 | Bearing ring for outer guard tube | 1 | 1 | 1 |
| 22 | 8109 | Stopper | 6 | 6 | 6 |
| 23 | 9221 | Inner shield | 1 | 1 | 1 |
| 24 | 9220 | Outer shield | 1 | 1 | 1 |
| 25 | 9222 | Complete shield | 1 | 1 | 1 |
| 26 | 9662 | Bolt M16 x 80mm + lock nut | 2 | 2 | 2 |
| 27 | 8308 | Safety chain | 2 | 2 | 2 |

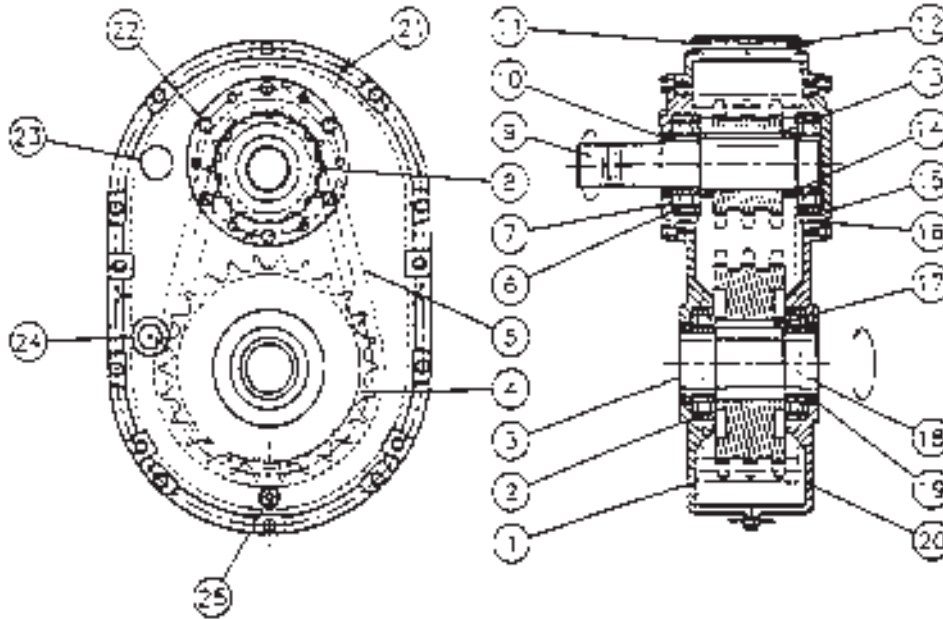
GEAR BOX # 9307 (T279)

170-05031.tif



| REF. | PART # | DESCRIPTION | QTY |
|------|---------|---|-----|
| 1 | 6314 | Oil seal 52 x 85 x 10 | 1 |
| 2 | 30209-A | Bearing: cone & cup | 2 |
| 4 | 6318 | Extension | 1 |
| 5 | 6319 | Bolt M10 x 22 | 16 |
| 6 | 32209-A | Bearing: cone & cup | 1 |
| 7 | 6321 | Shim | 2 |
| 8 | 6322 | Gear Z21 | 1 |
| 9 | - - - | Use silicone caulking | - |
| 11 | 6325 | Side shaft Z20 (1 3/4" - 20 splines) | 1 |
| 12 | 6326 | Key B14 x 9 x 40 | 2 |
| 13 | 9345 | Impeller shaft (2" & 1 3/4" - 20 splines) | 1 |
| 14 | 6328 | Spring washer | 1 |
| 15 | 6329 | Lock nut M40 x 1.5 H9 | 1 |
| 16 | 6330 | Casing | 1 |
| 17 | 6331 | Plug 3/8" gas | 3 |
| 18 | 6332 | Oil seal 45 x 72 x 8 | 1 |
| 19 | 6333 | External circlip 50 UNI7435 | 1 |
| 20 | 6334 | Gear Z21 | 1 |
| 21 | 6335 | Shim | 2 |
| 22 | 30210-A | Bearing: cone & cup | 1 |
| 24 | 6338 | Cover | 1 |
| 25 | 6339 | Oil seal 50 x 72 x 8 | 1 |

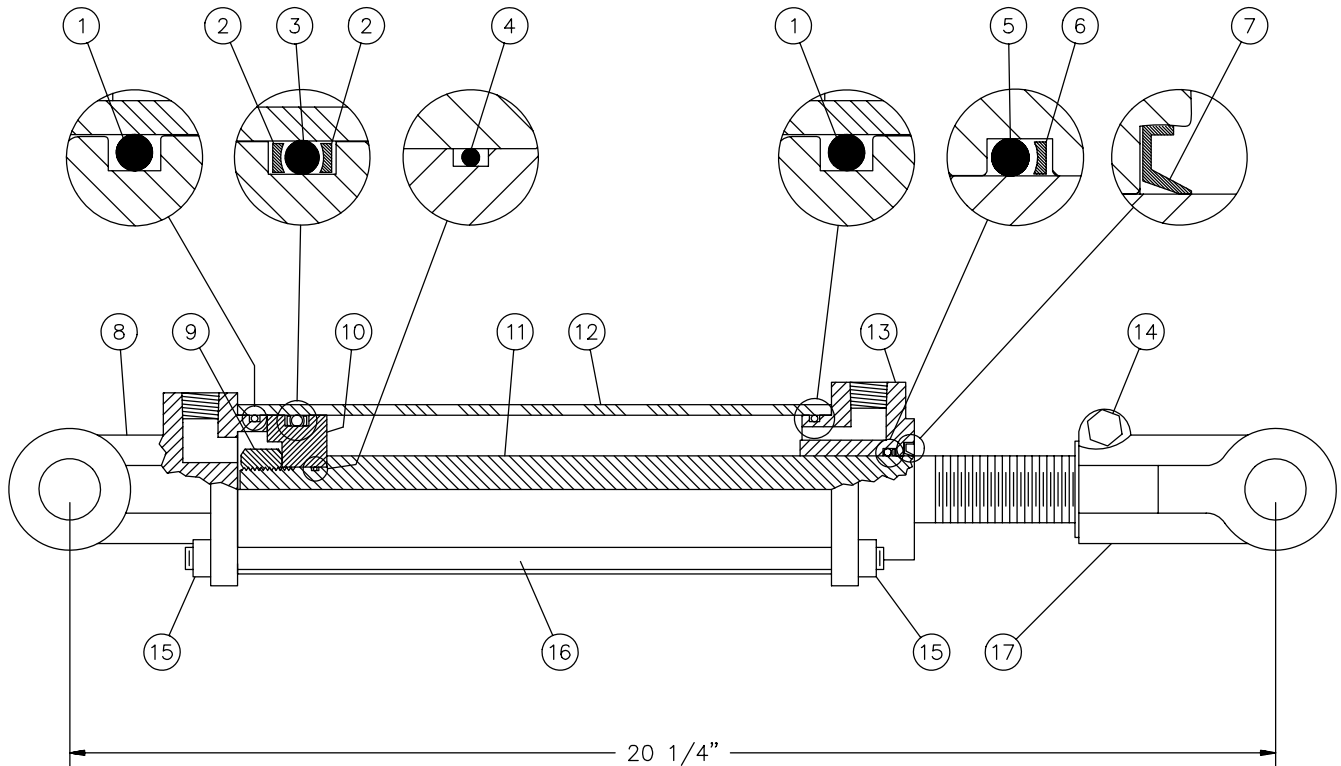
REDUCTION GEAR BOX # 9575



| REF. | PART # | DESCRIPTION | QTY |
|------|-------------|---|------|
| 1 | 9546 | Casing with plug | 1 |
| 2 | 6212-2RS | Bearing 6212 | 2 |
| 3 | 9547 | Seal cover (47 x 7) | 1 |
| 4 | 9548 | Sprocket 80-3A26 | 1 |
| 5 | 9549-RENOLD | Chain 80-3 x 36" lg (Renold) | 1 |
| 5 | 9549 | Chain 80-3 x 36" lg | opt. |
| 6 | 6309-2RS | Bearing 6309 | 2 |
| 7 | 9550 | Input cover with hole | 1 |
| 8 | 9551 | Sprocket 80-3A14 | 1 |
| 9 | 9552 | Input shaft 1 3/4"-20 splines | 1 |
| 10 | 9553 | Oil seal (45x65x8) TC double lips | 1 |
| 11 | 300-34490 | Bolt 5/16" NC x 4 1/2" lg | 10 |
| 12 | 336-34000 | Nut 5/16" NC | 10 |
| 13 | 9554 | Square key 1/2" x 2 1/2" | 1 |
| 14 | 9555 | Spacer (2 - 2 3/8 - 0.568) | 2 |
| 15 | 9556 | Input cover w/o hole | 1 |
| 16 | 9557 | O-ring AS-248 | 2 |
| 17 | 9558 | Square key 5/8" x 2 1/2" | 1 |
| 18 | 9559 | Output shaft 1 3/4"-20 splines | 1 |
| 19 | 9560 | Oil seal (60 x80x10) TC double lips | 2 |
| 20 | 9561 | Casing w/o plug | 1 |
| 21 | 9562 | Slotted spring pin 3/16" x 3/4" | 2 |
| 22 | 300-30220 | Bolt 3/16" NC x 3/4" lg | 12 |
| 23 | 9563 | Air vent 1/2" NPT | 1 |
| 24 | 9564 | Oil level sight glass 3/4" NPT | 1 |
| 25 | 9565 | Drain plug 1/2" NPT | 1 |

CYLINDER 25TR08

15050



| REF. | PART # | DESCRIPTION | QTY |
|------|-------------|---|-----|
| 1 | See #RK25TR | O-ring 1/8" x 2 1/4" x 2 1/2" | 2 |
| 2 | See #RK25TR | Back-up 2 1/2" o.d. x 3/16 ø | 2 |
| 3 | See #RK25TR | O-ring 3/16" x 2 1/8" x 2 1/2" | 1 |
| 4 | See #RK25TR | O-ring 1/16" x 5/8" x 3/4" | 1 |
| 5 | See #RK25TR | O-ring 1/8" x 1 1/8" x 1 3/8" | 1 |
| 6 | See #RK25TR | Back-up 1 3/8" o.d. x 1/8" ø | 1 |
| 7 | See #RK25TR | Wiper 1 1/8" i.d. x 1 5/8" o.d. | 1 |
| 8 | 492401 | Yoke (for 2 1/2" tube) | 1 |
| 9 | 338-46000 | Nut 3/4" NF | 1 |
| 10 | 4924-31 | Piston 2 1/2" ø | 1 |
| 11 | 492028 | Piston rod 1 1/8" | 1 |
| 12 | 491668 | Cylinder body 2 1/2" ø | 1 |
| 13 | 492421 | Head (for 2 1/2" tube) | 1 |
| 14 | 300-36355 | Bolt 3/8" NC x 2 1/4" + nut | 1 |
| 15 | 336-36000 | Nut 3/8" NC | 8 |
| 16 | Std. | Threaded rod 3/8" NC x 12" lg | 4 |
| 17 | 458599 | Yoke (for 1 1/8" rod) | 1 |
| NI* | 8183 | Pin 1" ø + cotter pin | 2 |
| NI* | RK25TR | Repair kit for cylinder 2 1/2" (includes # 1, 2, 3, 4, 5, 6, & 7) | 1 |

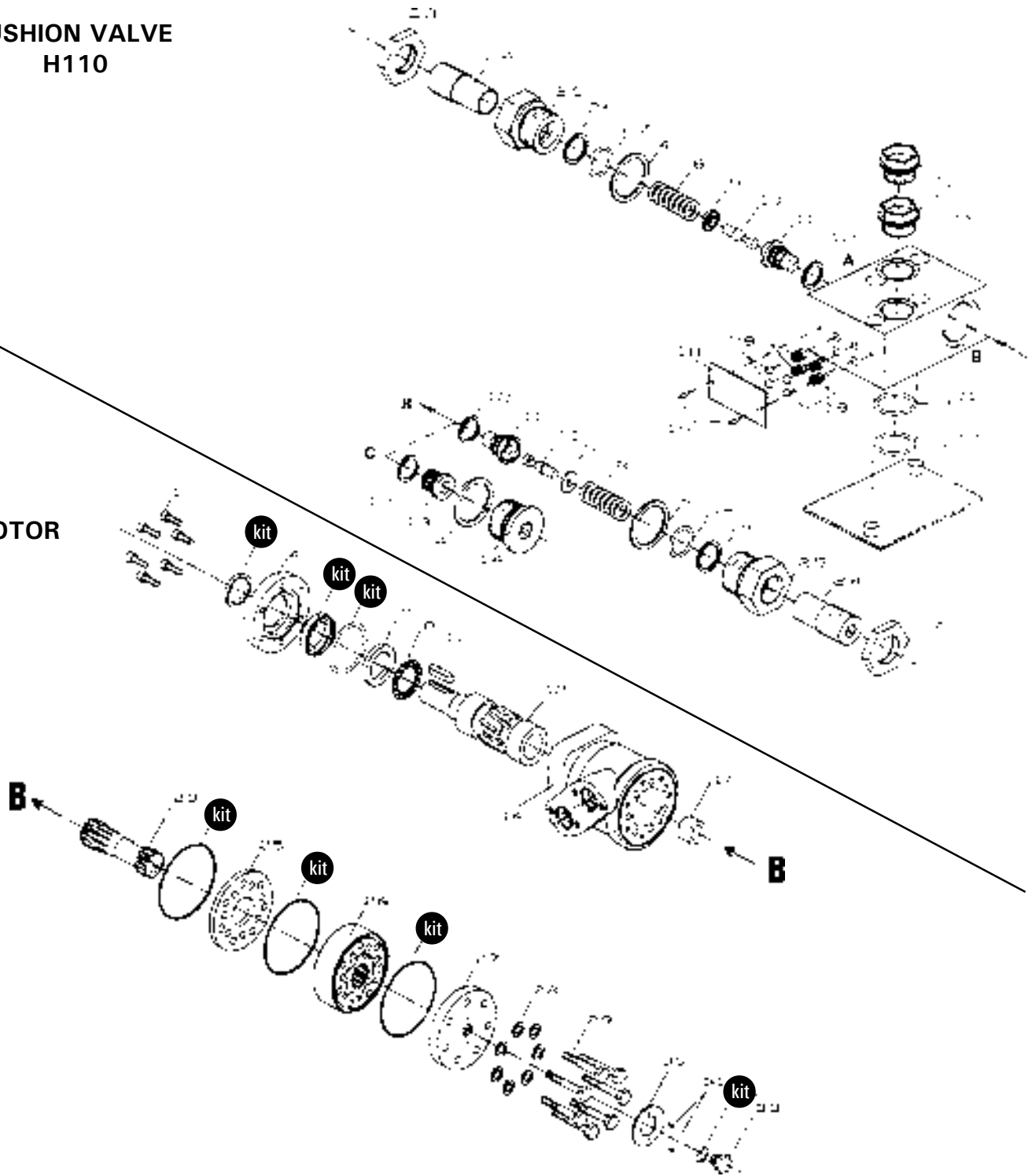
*NI = NOT ILLUSTRATED

10

HYDRAULIC MOTOR # MLH-250 & MLH-315

CUSHION VALVE
H110

MOTOR






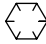



| REF. | PART # | DESCRIPTION | QTY |
|------|--------|----------------------------|-----|
| Ⓚ | 8368 | Set of seals..... | 1 |
| 11 | 8369 | Key for "Orbit" motor..... | 1 |






TORQUE CHART

11

TORQUE SPECIFICATION TABLE

| Thread UNC and UNF | | Grade 2  | | | | Grade 5    | | | | Grade 8*    | | | |
|--------------------|-------|---|------|-----------------------|-------|--|------|-----------------------|--------|--|------|-----------------------|--------|
| Bolt size | | Torque | | | | Torque | | | | Torque | | | |
| Inches | mm | Pound feet min. | max. | Newton meters min. | max. | Pound feet min. | max. | Newton meters min. | max. | Pound feet min. | max. | Newton meters min. | max. |
| 1/4 | 6.35 | 5 | 6 | 6.8 | 8.13 | 9 | 11 | 12.2 | 14.9 | 12 | 15 | 16.3 | 30.3 |
| 5/16 | 7.94 | 10 | 12 | 13.6 | 16.3 | 17 | 20.5 | 23.1 | 27.8 | 24 | 29 | 32.5 | 39.3 |
| 3/8 | 9.53 | 20 | 23 | 27.1 | 31.2 | 35 | 42 | 47.5 | 57.0 | 45 | 54 | 61.0 | 73.2 |
| 7/16 | 11.11 | 30 | 35 | 40.7 | 47.4 | 54 | 64 | 73.2 | 86.8 | 70 | 84 | 94.9 | 113.9 |
| 1/2 | 12.70 | 45 | 52 | 61.0 | 70.5 | 80 | 96 | 108.5 | 130.2 | 110 | 132 | 149.2 | 179.0 |
| 9/16 | 14.29 | 65 | 75 | 88.1 | 101.6 | 110 | 132 | 149.2 | 179.0 | 160 | 192 | 217.0 | 260.4 |
| 5/8 | 15.88 | 95 | 105 | 128.7 | 142.3 | 150 | 180 | 203.4 | 244.1 | 220 | 264 | 298.3 | 358.0 |
| 3/4 | 19.05 | 150 | 185 | 203.3 | 250.7 | 270 | 324 | 366.1 | 439.3 | 380 | 456 | 515.3 | 618.3 |
| 7/8 | 22.23 | 160 | 200 | 216.8 | 271.0 | 400 | 480 | 542.4 | 650.9 | 600 | 720 | 813.6 | 976.3 |
| 1 | 25.40 | 250 | 300 | 338.8 | 406.5 | 580 | 696 | 786.5 | 943.8 | 900 | 1080 | 1220.4 | 1464.5 |
| 1 1/8 | 25.58 | - | - | - | - | 800 | 880 | 1084.8 | 1193.3 | 1280 | 1440 | 1735.7 | 1952.6 |
| 1 1/4 | 31.75 | - | - | - | - | 1120 | 1240 | 1518.7 | 1681.4 | 1820 | 2000 | 2467.9 | 2712.0 |
| 1 3/8 | 34.93 | - | - | - | - | 1460 | 1680 | 1979.8 | 2278.1 | 2380 | 2720 | 3227.3 | 3688.3 |
| 1 1/2 | 38.10 | - | - | - | - | 1940 | 2200 | 2630.6 | 2983.2 | 3160 | 3560 | 4285.0 | 4827.4 |

* Thick nuts must be used with grade 8 bolts.

| Size of screw | Thread | Pitch (mm) | Grade 4T   | | | | Grade 7T  | | | | Grade 8T   | | | |
|---------------|--------|------------|--|------|-----------------------|-------|---|------|-----------------------|-------|--|------|-----------------------|-------|
| | | | Torque | | | | Torque | | | | Torque | | | |
| | | | Pound feet min. | max. | Newton meters min. | max. | Pound feet min. | max. | Newton meters min. | max. | Pound feet min. | max. | Newton meters min. | max. |
| M6 | UNC | 1.00 | 3.6 | 5.8 | 4.9 | 7.9 | 5.8 | 9.4 | 7.9 | 12.7 | 7.2 | 10 | 9.8 | 13.6 |
| M8 | UNC | 1.25 | 7.2 | 14 | 9.8 | 19 | 17 | 22 | 23 | 29.8 | 20 | 26 | 27.1 | 35.2 |
| M10 | UNC | 1.5 | 20 | 25 | 27.1 | 33.9 | 34 | 40 | 46.1 | 54.2 | 38 | 46 | 51.5 | 62.3 |
| M12 | UNC | 1.75 | 28 | 34 | 37.9 | 46.1 | 51 | 59 | 69.1 | 79.9 | 57 | 66 | 77.2 | 89.4 |
| M14 | UNC | 2.0 | 49 | 56 | 66.4 | 75.9 | 81 | 93 | 109.8 | 126 | 96 | 109 | 130.1 | 147.7 |
| M16 | UNC | 2.0 | 67 | 77 | 90.8 | 104.3 | 116 | 130 | 157.2 | 176.2 | 129 | 145 | 174.8 | 196.5 |
| M18 | UNC | 2.0 | 88 | 100 | 119.2 | 136 | 150 | 168 | 203.3 | 227.6 | 175 | 194 | 237.1 | 262.9 |
| M20 | UNC | 2.5 | 108 | 130 | 146.3 | 176.2 | 186 | 205 | 252 | 277.8 | 213 | 249 | 288.6 | 337.4 |
| M8 | UNF | 1.0 | 12 | 17 | 16.3 | 23 | 19 | 27 | 25.7 | 36.6 | 22 | 31 | 29.8 | 42 |
| M10 | UNF | 1.25 | 20 | 29 | 27.1 | 39.3 | 35 | 47 | 47.4 | 63.7 | 40 | 52 | 54.2 | 70.5 |
| M12 | UNF | 1.25 | 31 | 41 | 42 | 55.6 | 56 | 68 | 75.9 | 92.1 | 62 | 75 | 84 | 101.6 |
| M14 | UNF | 1.5 | 52 | 64 | 70.5 | 86.7 | 90 | 106 | 122 | 143.6 | 107 | 124 | 145 | 168 |
| M16 | UNF | 1.5 | 69 | 83 | 93.5 | 112.5 | 120 | 138 | 162.6 | 187 | 140 | 158 | 189.7 | 214.1 |
| M18 | UNF | 1.5 | 100 | 117 | 136 | 158.5 | 177 | 199 | 239.8 | 269.6 | 202 | 231 | 273.7 | 313 |
| M20 | UNF | 1.5 | 132 | 150 | 178.9 | 203.3 | 206 | 242 | 279.1 | 327.9 | 246 | 289 | 333.3 | 391.6 |

Use the above torques when special torque is not given.

NOTE: These values apply to fasteners as received from supplier, dry, or when lubricated with normal engine oil. They do not apply if extreme pressure lubricants are used.

WARRANTY

PRONOVOST warrants this product to the initial purchaser for the period of one year from the date of purchase against defects in materials and workmanship.

We will replace or repair defective parts free of charge if they are returned to our plant in St-Tite, Quebec, Canada.

Transportation charges are the responsibility of the customer. This warranty is not transferable.

Hydraulic cylinders and motors are covered by the manufacturer of these items.

The PTO shafts are warranted by the manufacturer and cover **only** defects in material and workmanship, and is conditional to recommended use and installation only.

All PRONOVOST spare parts purchased are covered by a three (3) month warranty.

This warranty becomes void and nul if the equipment is modified, breaks down as the result of an accident, is not operated according to manufacturer's recommendations, damaged by negligence or if maintenance has not been carried out as specified.

Our obligation is limited to the replacement or repair of the defective part. PRONOVOST accepts no responsibility for direct or indirect consequential damages of any kind.

Ce manuel est aussi disponible en français.
Veuillez téléphoner.



INNOVATION - EXCELLENCE

LES MACHINERIES PRONOVOST INC.

260, route 159,

Saint-Tite, Quebec, Canada, G0X 3H0

Tel.: (418) 365-7551, Fax: (418) 365-7954

www.pronovost.qc.ca