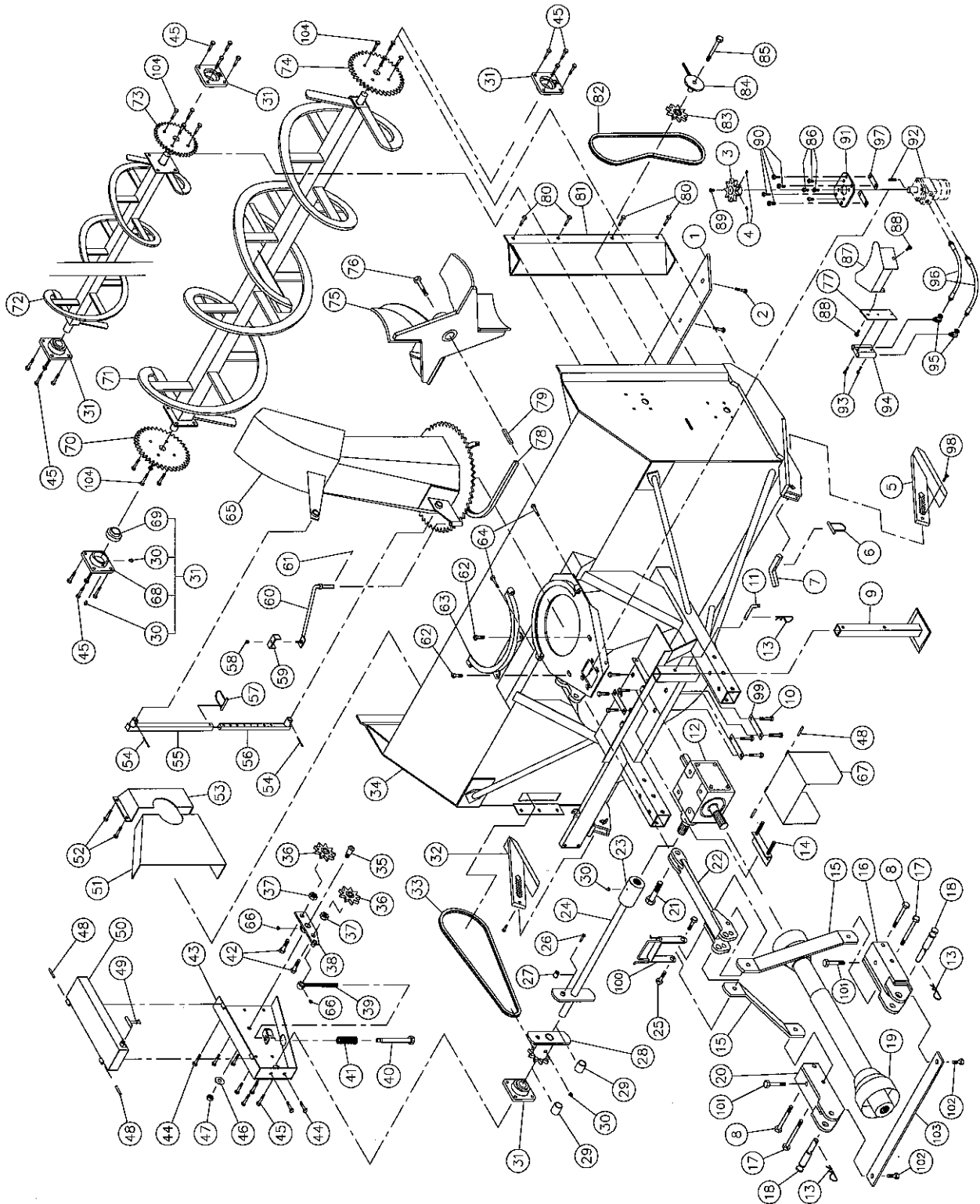


SNOWBLOWER P-862-7 4

170-02493



SNOWBLOWER P-862~~7~~(cont'd)

REF.	PART #	DESCRIPTION	QTY
1	140-00911	Reversible scraper blade 3/8" x 4" x 79½" lg	1
2	125-0715	Plow bolt 7/16" NC x 1½" lg + nut & lock washer	8
3	110-04182	Sprocket 9 tooth	1
4	Std.	Hexagonal socket set screw 3/8" NC x 3/8" lg (2)	2
5	110-05491	Skid shoe (right side)	1
6	8112	Lock pin 1/4"	2
7	140-01861	Skid shoes lock	2
8	Std.	Bolt 5/8" NC x 5" lg + nylon locknut	2
9	8219	Storage support	1
10	Std.	Bolt ½" NC x 1" lg + lock washer	8
11	8220	Storage support pin	1
12	8251	Gear box	1
13	Std.	Hitch pin clip 5/32"	3
14	110-05321	Adjustment plate for gear box + 4 nuts 1/2" NC	1
15	140-10751	3-points side bar	2
16	110-15052	Right lower hitch	1
17	Std.	Bolt 5/8" NC x 5 1/2" lg + nylon locknut	2
18	8004	Pin category 1 & 2	2
19	8202	P.T.O. shaft T60	1
19	9225-1	P.T.O. shaft T80	opt.
20	110-15051	Left lower hitch	1
21	Std.	Bolt 1" NC x 3" lg + nylon locknut	1
22	110-15091	Upper hitch	1
23	6466	Splined adaptor 1¼" - 19 splines (welded)	1
24	110-0563/	Auger drive shaft 26 7/16" lg overall (includes no. 23 and 27)	1
25	Std.	Bolt 5/8" NC x 2 1/4" lg + nylon locknut	2
26	Std.	Bolt 1/4" NC x 2" lg grade 5 + nylon locknut	1
27	150-01491	Bushing ¼" i.d. x 7/8" o.d. x ¾" lg (welded)	2
28	8184	Sprocket #80 + shearplate (includes no. 29)	1
29	8009	Brass bushing 1¼" i.d. x 1½" o.d. x 1 3/16" lg	2
30	Std.	Grease fitting ¼"-28 straight	12
31	UCFLD207-20	Bearing 1¼" + flange & 2 grease fitting (straight)	5
32	110-03151	Skid shoe (left side)	1
33	190-01441	Chain # 80 x 77" lg (77 links)	1
33	26A80	Connecting link #80	1
33	59-80	Offset link #80	1
34	120-03271	Frame P-862	1
35	150-00381	Idler clevis pin	1
36	9287	Idler sprocket #80	2
37	Std.	Nut 7/8" NC	2
38	110-01211	Idler	1
39	110-01232	Threaded rod for idler adjustment + nut 7/16" NC	1
40	110-01221	Threaded tube for idler adjustment	1
41	9473	Compression spring	1
42	Std.	Bolt 3/4" NC x 2 1/2" lg + nylon locknut	2
43	110-11732	Chain guard	1
44	Std.	Bolt 7/16" NC x 1" lg + nylon locknut	5
45	Std.	Bolt 7/16" NC x 1½" lg + nylon locknut	20
46	Std.	Flat washer 5/8"	1
47	346-44500	Nylon locknut 5/8" NC thin	1
48	Std.	Roll pin 5/16" x 2" lg	4
49	8125	Rubber fastener	1
50	110-11671	Chain guard cover	1

SNOWBLOWER P-862⁷⁴(cont'd)

REF.	PART #	DESCRIPTION	QTY
51	130-02001	Inside guard (welded)	1
52	Std.	Bolt 3/8" NC x 1" lg + nylon locknut & flat washer	4
53	8018	Inside guard (bolted)	1
54	Std.	2 hairpin cotter 5/32" x 2" lg	opt.
55	8146	Chute adjusting tube	opt.
56	8145	Chute adjusting rod	opt.
57	8112	Lock pin 1/4"	opt.
58	Std.	Nylon locknut 5/16"	opt.
59	140-00881	Hoses mounting plate	opt.
60	110-01111	Mounting support plate	opt.
61	Std.	Cotter pin 1/8" x 1"	opt.
62	Std.	Bolt 1/2" NC x 1 1/2" lg + nylon locknut & flat washer	2
63	110-01341	Retaining bracket	1
64	Std.	Bolt 7/16" NC x 3"lg + nylon locknut	2
65	120-00731	Chute	opt.
66	Std.	Grease fitting 1/4" - 28 90 deg.	2
67	110-12421	Hinged P.T.O. shroud	1
68	FD207	Flange for 2 grease fitting	5
69	UC207-20	Bearing 1 1/4"	5
70	8185	Sprocket 80A30 T 1 1/4" ø	1
71	110-12481	Lower auger P-862 - 7.4	1
72	110-12471	Upper auger P-862 - 7.4	1
73	8144	Sprocket 60A30 T 1 1/4" ø	1
74	8021	Sprocket 60A38 T 1 1/4" ø	1
75	110-01882	Impeller 28" ø 4 blades	1
76	Std.	Impeller cap screw 5/8" NC x 1 1/2" lg (ass. with lock-tite 242) + lock washer	1
77	130-06291	Support plate for relief valve	opt.
78	8149	U-shaped UHMW ± 14" i. d.	1
79	8030	Square key 3/8" x 3/8" x 3 1/2" lg	1
80	Std.	Bolt 7/16" NC x 1" lg + nylon locknut	4
81	8135	Drive chain guard (upper auger)	1
82	190-01301	Chain #60 x 63 3/4" lg	1
83	8186	Idler sprocket #60	1
84	8136	Idler for upper auger (hole 1/2") + 2 nuts 1/2" NC	1
85	Std.	Bolt 1/2" NC x 3 1/2" lg + nylon locknut & flat washer	1
86	Std.	Bolt 3/8" NC x 1" lg + lock washer (4)	4
87	130-08161	Guard	1
88	Std.	Bolt 7/16" NC x 1 1/4" lg + nylon locknut + flat washer	2
89	Std.	Bolt 1/4" NC x 3/4" lg + lock washer	1
90	Std.	Bolt 7/16" NC x 1 1/2" lg + nylon locknut & flat washer	4
91	130-08151	Orbit motor support	1
92	---	Hydraulic orbit motor	opt.
93	Std.	Bolt 5/16" NC x 2 1/2" lg + nylon locknut (2)	opt.
94	DXV50	Relief valve	opt.
95	9405x8x8	Fitting 90 deg. swivel (2)	opt.
96	190-00421	Hose 3/8" x 16" lg + 2 fittings 6U108 (2)	opt.
97	140-09571	Spacer 1/8" x 1" x 3 1/4" lg for "Orbit" motor	2
98	Std.	Bolt 1/4" NC x 1 1/4" lg + nylon locknut	2
99	140-10571	Back plate	3
100	110-15291	Hoses support	1
101	Std.	Bolt 5/8" NC x 4 1/2" lg + nylon locknut	2
102	Std.	Bolt 1/2" NC x 1 1/2" lg + nylon locknut	2
103	140-10871	Brace 3/8" x 1 1/2" x 32 1/16" lg	1
104	Std.	Bolt 7/16" NC x 1 1/2" lg + two-way locknut	12