



TABLE OF CONTENTS

Section	Item	Page
1	Introduction	5
2	Safety	6
	General Safety	6
	Safety in operation	6
	Safety with Maintenance	7
	Safety in transport	7
	Safety in storage	7
3	Decals	8
	Safety Decals	8
	Maintenance Decals	10
4	Assembly	11
	General assembly	11
	Manual Chute Kit	12
	Hydraulic Chute Kit: Cylinder	13
	Hydraulic Chute Kit: Motor	14
5	Start-up	15
	Basic Start-up Procedures	15
6	Maintenance	16
7	Storage	17
8	Trouble Shooting	18
9	Specifications	20
10	Parts List	21
	Snowblowers P-740 P-800 P860	21
	Snowblowers P-740TRC P-800TRC P-860TRC	24
	Snowblower P-862	27
	Snowblower P-862TRC	30
	Manual Chute Kit M-7486	33
	Hydraulic Chute Kit: Cylinder H-7486	34
	Hydraulic Chute Kit: Motor SP-7486	35
	Semi-industrial Chute PSI-7486	36
	Industrial Chute PC-7486	37
	Heavy Duty Kit 7486	38
	P.T.O. Shaft 8114-EG	39
	P.T.O. Shaft 8202	40
	Gear Box 8115	41
	Cylinder 25TR08	42
	Hydraulic Motor DH 250 & DH 315	43
11	Torque Chart	44
12	Warranty	45

INTRODUCTION

1

CONGRATULATIONS!

Thank you for choosing PRONOVOST. We are confident this equipment will meet your requirements in terms of quality, performance and reliability.

This manual was prepared to assist you in the safe operation of your new Snowblower. It contains important information which will help you achieve excellent returns with your Snowblower for years to come.

Please read this manual completely before operating your Snowblower and keep it for future reference.

Before starting the machine, you or any other person who will be operating the Snowblower must familiarize yourself with the safety recommendations and the operating instructions. Please read carefully and be sure to understand and follow all recommendations and procedures.

In this manual, the right and left sides are identified as shown on Figure 1.

If you require additional information on your Snowblower, please contact your PRONOVOST Dealer.

NOW take a moment to enter the model, serial number and the date of purchase of your Snowblower in the space provided.

When ordering parts from your Dealer, please refer to these numbers for a fast and efficient service. Use PRONOVOST parts for replacement.

The model and serial numbers are on the name plate shown on Fig. 1.

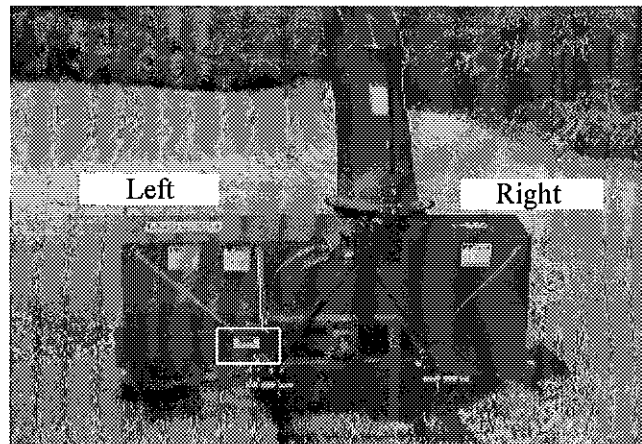


Figure 1

MODEL: _____

SERIAL NO: _____

DATE OF PURCHASE: _____

SAFETY

2

GENERAL SAFETY

WHEN YOU SEE THIS SYMBOL



ATTENTION!

**BE ALERT
YOUR SAFETY IS INVOLVED**

This symbol «**SAFETY ALERT**» is used in this manual and on the safety decals on the Snowblower. It warns you of the possibility of danger. Carefully read, understand and follow all safety recommendations before operating the Snowblower.

- 1) Careful operation is the best assurance against accidents. Carefully read this manual and follow all recommendations before operating your Snowblower. It is the owner's responsibility to make sure that anyone who will operate the Snowblower will read this manual before operating the equipment.
- 2) Familiarize yourself with all controls and always be ready to stop the Snowblower quickly in case of emergency.
- 3) Never let a child operate the Snowblower.
- 4) Do not modify the Snowblower. Any non authorized modification may affect the efficiency and/or safety of the equipment.
- 5) Never operate the Snowblower with defective parts or if damaged in any way. Have it repaired before operating.
- 6) Make sure all fasteners are in place and properly secured or tightened. Refer to torque chart on page 44.
- 7) Avoid wearing loose fitting clothing when working with the Snowblower. These could get entangled in moving parts of the equipment and cause accidents.
- 8) Prolonged exposure to noise may hamper hearing. Protect yourself by wearing adequate protection devices.
- 9) Hydraulic fluids under pressure can damage your skin. Do not use your hands to locate a leak.
- 10) Before the beginning of the snow season, inspect all areas where the Snowblower will be used and remove any object which may cause an accident and/or damage the equipment.
- 11) Never operate your Snowblower in poor visibility or without proper lighting conditions.

SAFETY IN OPERATION

- 1) Be sure there are no obstructions around the equipment and that no one stands near the equipment when in operation.
- 2) Do not operate an engine in a confined or non ventilated area.
- 3) Do not perform any adjustments, cleaning, maintenance or repairs with the engine running. The engine must be stopped and the P.T.O. disengaged. Preferably remove the key from the ignition.
- 4) Wear adequate clothing when working in cold or windy conditions.
- 5) Adjust skid shoes for proper ground clearance of scraper blade, especially in rough terrain or soft ground conditions.
- 6) Before operating, make sure the P.T.O. is properly installed and secured.
- 7) Before starting-up the Snowblower, make sure the auger and drum areas are free of ice.
- 8) Put P.T.O. control in neutral position before starting engine.
- 9) Keep hands, feet and clothing away from moving parts of the Snowblower. Stay away from the discharge chute.

SAFETY (cont'd)

- 10) Before unplugging the chute, always disengage the P.T.O., stop the engine and relieve all hydraulic pressures.
- 11) Do not operate in excessive inclined conditions. Be careful when turning in slopes.
- 12) Never operate your Snowblower with missing guards or without protective devices in place.
- 13) Do not operate your Snowblower near buildings, windows or other vehicles without prior and proper adjustment of the chute deflector.
- 14) Never aim discharge chute towards people or animals. This may cause serious injuries.
- 15) Always reduce operating speed in slippery conditions.
- 16) Be careful when backing-up, make sure you have good visibility.
- 17) Always be on the lookout for objects which may enter the Snowblower.
- 18) If undue vibrations are felt, disengage the P.T.O., stop the motor and look for the cause of the vibration. Vibration is usually the indication of a problem.
- 19) At the end of the operation, disengage the P.T.O., lower the Snowblower, put transmission in neutral, apply parking brake, stop engine and remove the key from the ignition.

SAFETY WITH MAINTENANCE

- 1) Perform the Snowblower maintenance according to recommendations contained in this manual.

- 2) Stop engine and relieve all hydraulic pressures before doing inspection, maintenance or repairs.
- 3) Never perform any work under the Snowblower while it is supported only by the tractor's hydraulic system. It must be completely supported by wooden blocks or other safe means.

SAFETY IN TRANSPORT

- 1) On public roads, use proper safety lights and check local regulations.
- 2) Be alert while driving on the road. Never carry passengers.
- 3) Always disengage P.T.O. while moving from one area of work to another.
- 4) It is recommended to use both brake pedals simultaneously for better control.
- 5) The recommended road speed should be such as to maintain full control over steering and braking.
- 6) Be careful while backing up, make sure you have good visibility.

SAFETY IN STORAGE

- 1) Provide adequate supports to prevent any accidental overturning of the Snowblower.
- 2) Do not let children play in the area where the snowblower is stored.

2

DECALS

SAFETY DECALS

The safety decals are affixed wherever special safety precautions are indicated. Locate them on the machine and read them carefully. If a decal is damaged, lost or illegible, install a new one. The following photos indicate where each one must be installed.

3

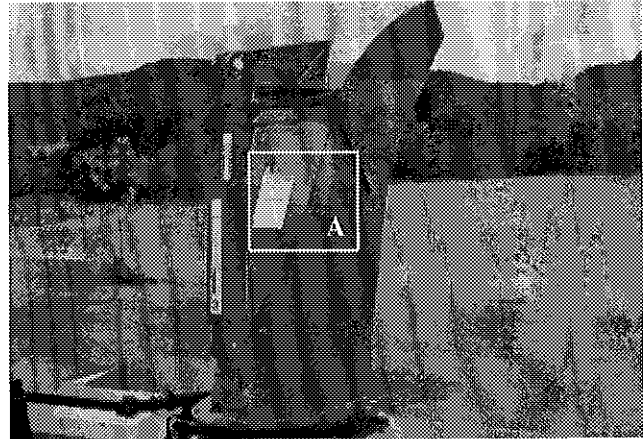


Figure 3

! ATTENTION

- 1- FOR SAFE OPERATION, FOLLOW OPERATING INSTRUCTIONS IN OPERATOR'S MANUAL.
- 2- KEEP HANDS, FEET AND CLOTHINGS AWAY FROM POWER DRIVEN PARTS.
- 3- STOP ENGINE BEFORE LEAVING THE EQUIPMENT.
- 4- MACHINE HAS TO BE COMPLETELY STOPPED BEFORE STARTING TO ADJUST OR LUBRICATE.
- 5- KEEP PEOPLE AND PETS AT SAFE DISTANCE FROM MACHINE.
- 6- KEEP ALL GUARDS AND SHIELDS IN PLACE.

- 1- POUR UN FONCTIONNEMENT SÉCURITAIRE SUIVRE LES INSTRUCTIONS DANS LE MANUEL D'OPÉRATION.
- 2- GARDER LES MAINS, PIEDS ET VÊTEMENTS ÉLOIGNÉS DES ÉLÉMENTS MOBILES OU ROTATIFS.
- 3- AVANT DE QUITTER LA MACHINE ARRÊTER LE MOTEUR.
- 4- ARRÊTER COMPLÈTEMENT LA MACHINE POUR EFFECTUER L'ENTRETIEN ET L'AJUSTEMENT.
- 5- GARDER LES GENS ET LES ANIMAUX À UNE DISTANCE SÉCURITAIRE.
- 6- GARDER TOUS LES ÉCRANS PROTECTEUR EN PLACE.

PA 93-01

Figure 2
Decal A

Part no.: A102

! DANGER

TO AVOID SERIOUS INJURIES, KEEP CLEAR OF EQUIPMENT WHILE IN OPERATION.

POUR ÉVITER DES BLESSURES GRAVES SE TENIR LOIN DE CET ÉQUIPEMENT LORSQU'IL EST EN MARCHÉ.

PD 93-03

Figure 4
Decal B

Part no.: A101



Figure 5

DECALS (cont'd)

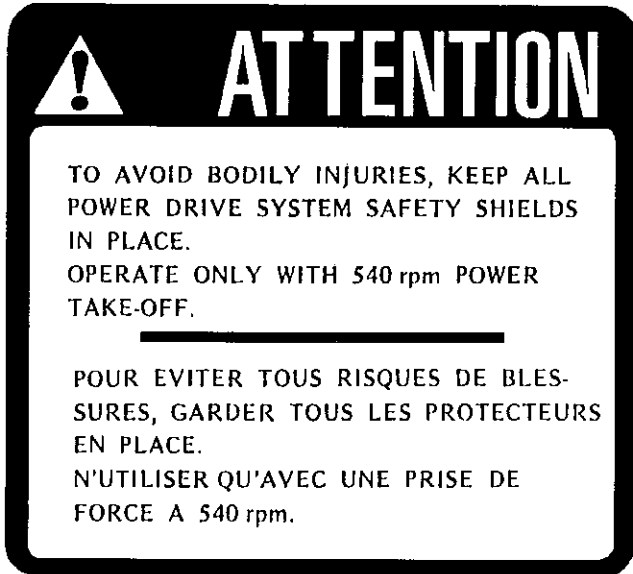


Figure 6
Decal C

Part no.: A107



Figure 7
Decal D

Part no.: A103

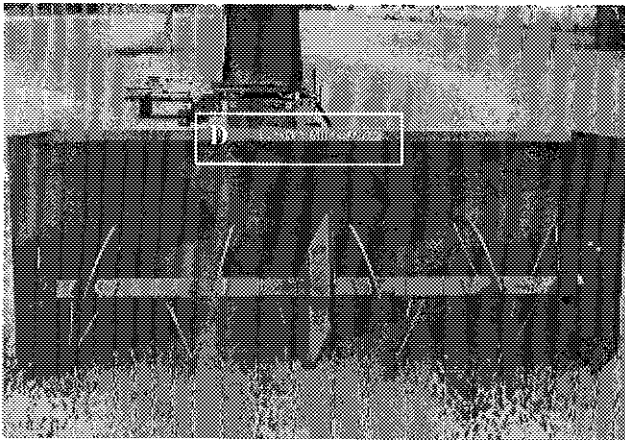


Figure 8

Decal E in Fig. 9 is located directly on the P.T.O. shaft. It is not visible when the safety shield is in place. It must never be visible when you operate the equipment.



Figure 9
Decal E

Part no.: A108

3

DECALS (cont'd)

3



Figure 10
Decal F

Part no.: A 109

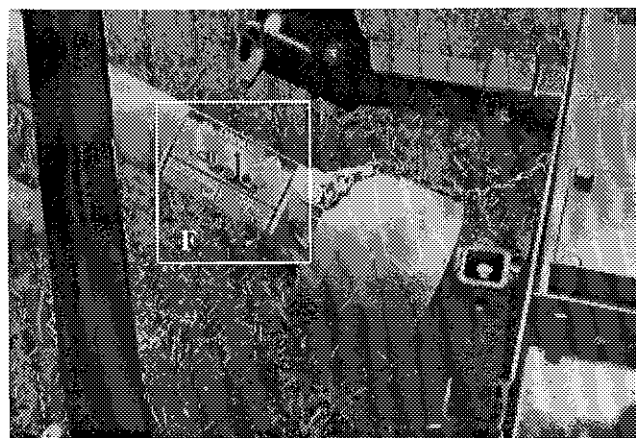
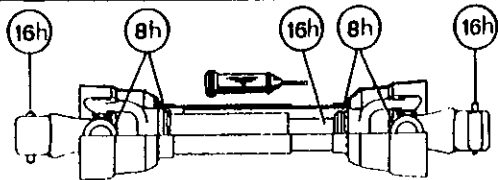


Figure 11

MAINTENANCE DECALS

The maintenance decals indicate the points requiring lubrication. Refer to maintenance section for more details.

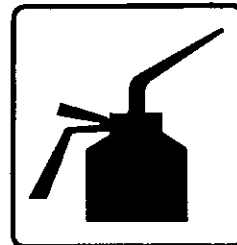


Figure 12

Part no.: A 105



Figure 13

Part no.: A 106



Figure 14
Decal G

Part no.: A104

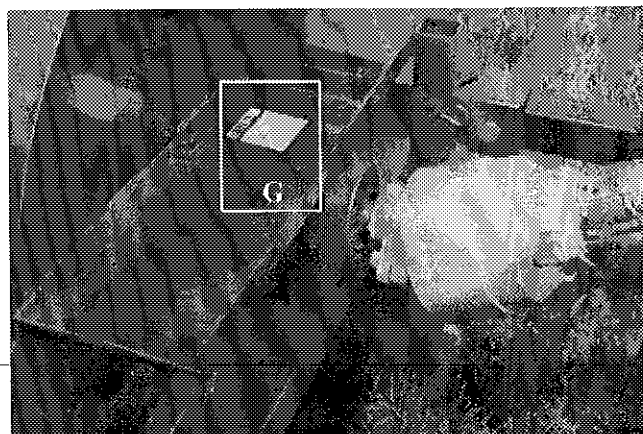


Figure 15

ASSEMBLY

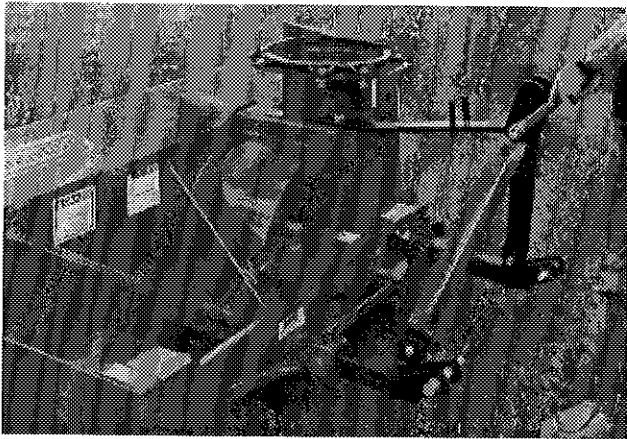


Figure 16



Figure 17



Figure 18

ASSEMBLY

- 1) The Snowblower is shipped partly assembled.
- 2) Install 3-point system according to the model of your Snowblower. (See section 10 for parts numbers). Use the holes most convenient to the type of tractor used (Fig. 16).
- 3) Install P.T.O. shaft with the shear pin end onto the Snowblower gear box (Fig. 17). Then attach safety shield support chain as shown (Fig. 18). **WARNING:** The telescoping tubes of the drive shaft must never be allowed to bottom out while maintaining a minimum overlap of 6 inches.
- 4) If you install a hydraulic cylinder on the chute deflector, use model 25TR08 cylinder.
- 5) If equipped with a rotating drum, install a hydraulic cylinder model 25TR08.
- 6) For the installation of the chute rotation mechanism, please refer to page 12 through 14, according to the type used.

4

ASSEMBLY (cont'd)

4

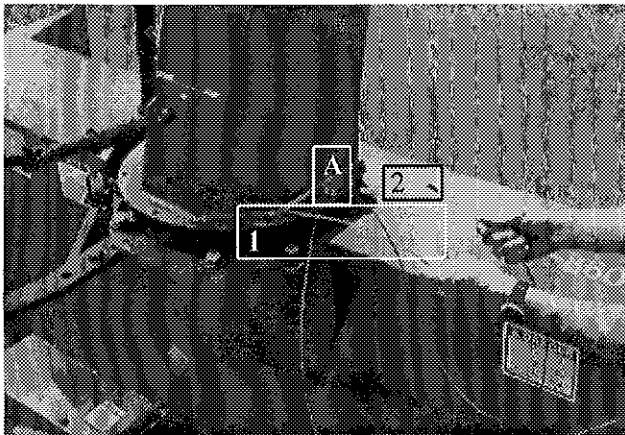


Figure 19

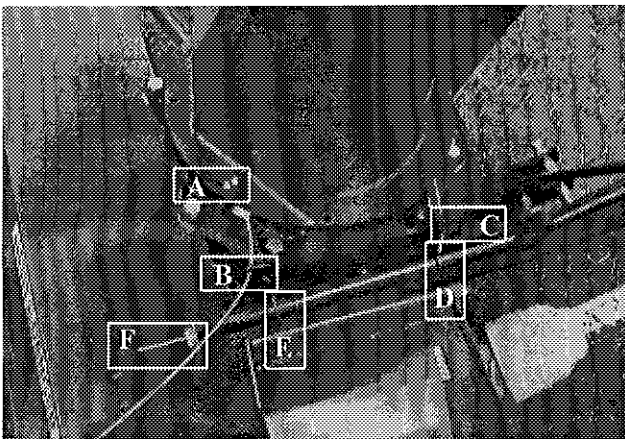


Figure 20

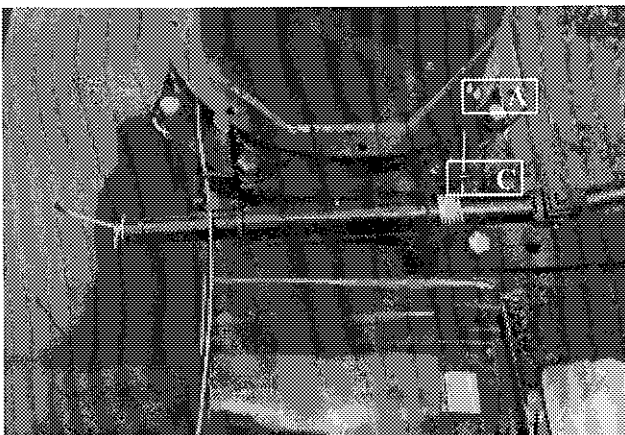


Figure 21

MANUAL CHUTE ROTATION

- 1) Install chute and kit as shown on page 33. Position chute with discharge facing toward the front of the Snowblower.
- 2) **Figure 19:** Hold steel cable so that end #1 will be 8" longer than end #2 and secure with cable clamp (A).
- 3) **Figure 20:** Turn chute counterclockwise until wire clamp (A) is near cable guide (B). Insert end #2 through guide (B) and leave it momentarily. Insert end #1 through cable guide (C) and then into spindle opening (D) and push it all the way through the end (F). Secure it temporarily with the 1/8" cable clamp and flat washer provided.
- 4) **Figure 21:** Turn crank clockwise until the cable clamp (A) is lined up with guide (C).
- 5) **Figure 22:** Insert the other end of the cable into the spindle opening (E) and push it all the way through the end (F). Secure both cables with the same cable clamp provided (F).

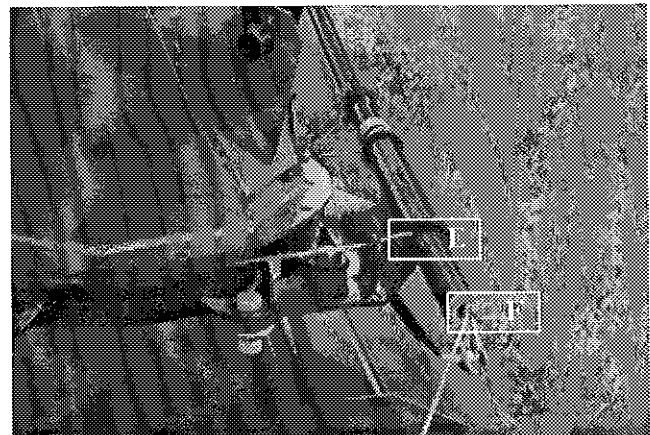


Figure 22

ASSEMBLY (cont'd)

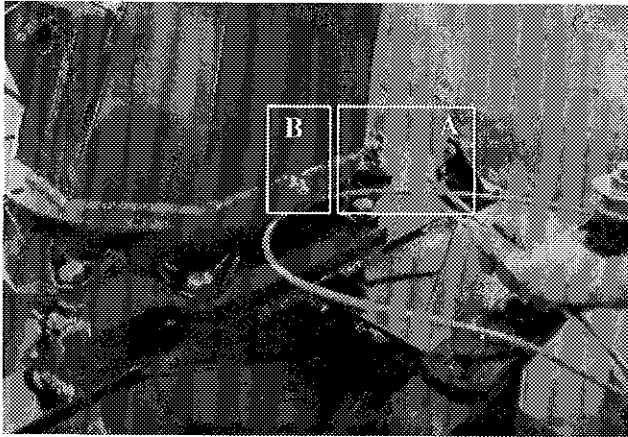


Figure 23



Figure 24

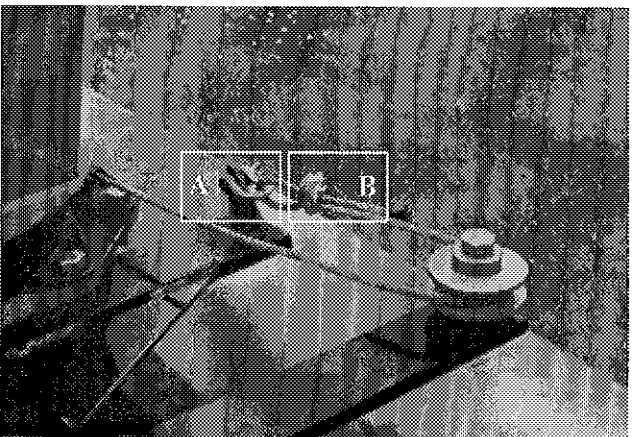


Figure 25

HYDRAULIC CHUTE ROTATION *Cylinder*

- 1) Install chute and kit as shown on page 34. Position chute with discharge towards the front of the Snowblower.
- 2) Place steel cable with both ends equal (A Fig. 23) and secure solidly with wire clamp provided (B Fig. 23).
- 3) Place pivot (A Fig. 24) perpendicular to the front of the Snowblower.
- 4) Pull cable end from the gearbox side, go around the chute, then around pulley (B Fig. 24), loop through clevis (A Fig. 25) and secure with cable clamp (B Fig. 25).
- 5) Pull other end of cable counterclockwise around the chute, then around pulley (A Fig. 26), loop through clevis and secure with wire clamp.
- 6) Make sure the cable is tight.

4

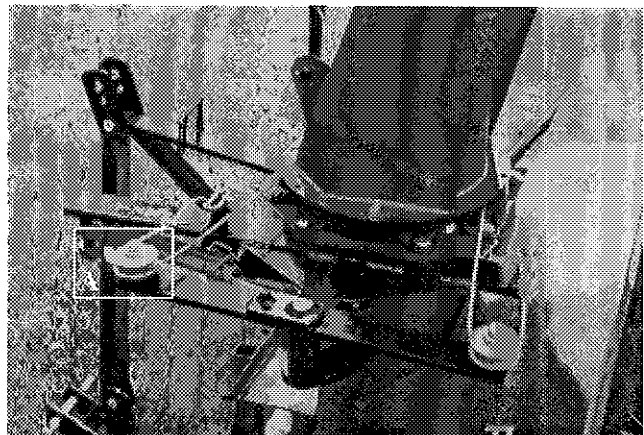


Figure 26

ASSEMBLY (cont'd)

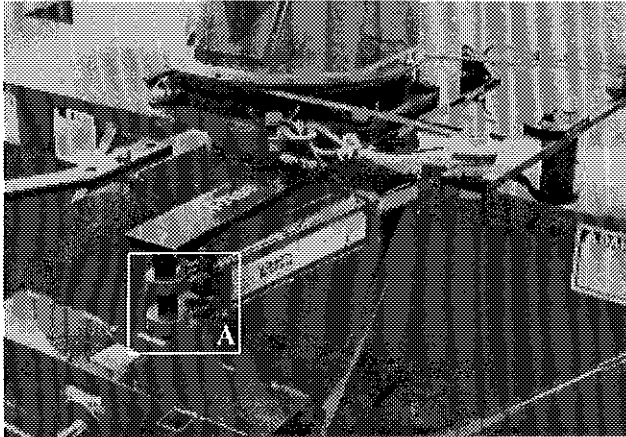


Figure 27

- 7) Install hydraulic cylinder with fittings facing down. Install end A of cylinder body as shown (Fig. 27) and install pin to secure it in place. Connect rod end to pivot plate.

HYDRAULIC CHUTE ROTATION Motor

- 1) Bolt the 47 tooth ring-gear onto chute flange with plain segment lined up with chute discharge opening (Fig. 28).
- 2) Install U-shaped UHMW piece, place chute on Snowblower and secure with retaining brackets and bolts provided.
- 3) Install motor mounting plate, motor and 9 tooth gear. See page 35 for bolt dimensions (Fig. 29).
- 4) The thickness of the 9 tooth gear is slightly more than the ring-gear. Make sure it exceeds on both sides of the ring gear.
- 5) Using the take-up screws, adjust gear to mesh without bottoming.
- 6) Install guard (Fig. 30).

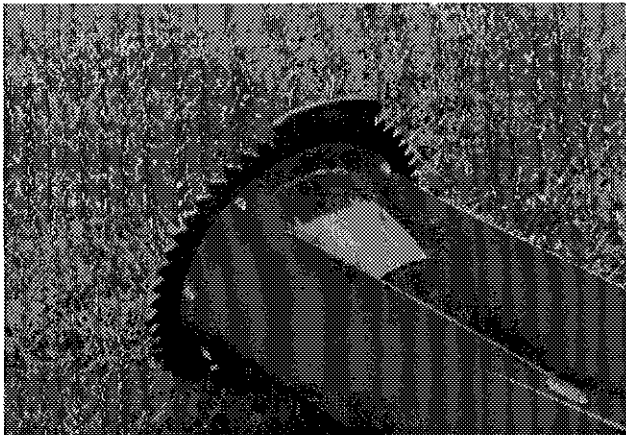


Figure 28



Figure 29

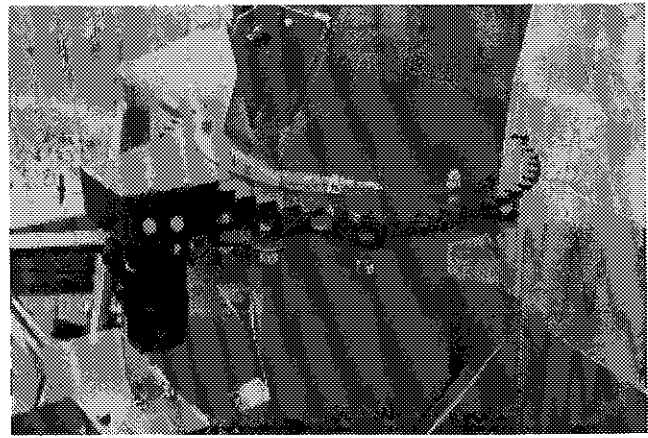


Figure 30

STARTING-UP



Figure 31

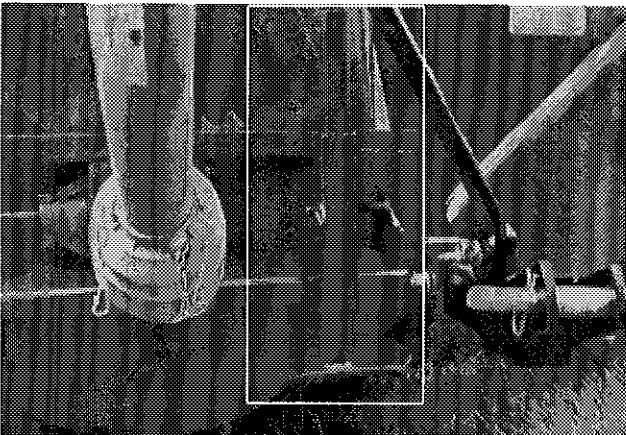


Figure 32

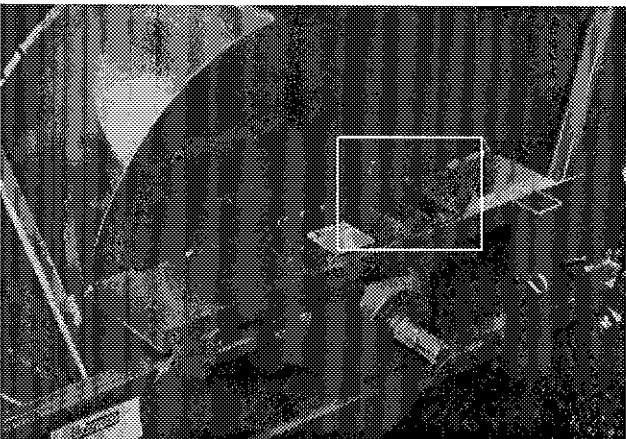


Figure 33

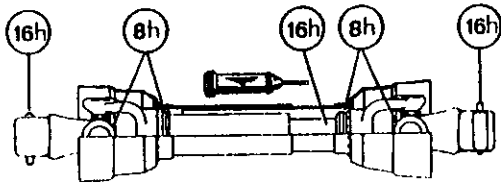
START-UP PROCEDURES

- 1) Check oil level in gearbox. Use S.A.E. W90 gear box oil.
- 2) Lubricate all points with a good quality multi use grease.
- 3) Check chain take-up adjustment. A slight tension must be maintained.
- 4) Verify for adequate tightness of all fastening devices. Refer to torque chart on page 44.
- 5) Adjust skid shoes according to ground conditions (Fig. 31).
- 6) Following the installation of the Snowblower on the tractor, **do not forget** to lift the storage support (Fig. 32).
- 7) Make sure of a 540 RPM input to your snowblower.
- 8) Check impeller adjustment. The tip of the blades should be approximately 1/8" to 3/16" from the discharge wall of the drum. If necessary, adjust with the take-up screws provided (Fig. 33).

5

MAINTENANCE

- 1) Wipe off all grease fittings with a clean cloth before adding grease in order to avoid injecting dirt and sand.
- 2) Repair or replace damaged grease fittings.
- 3) Lubricate all grease fittings every 10 hours of operation.
- 4) Oil drive chain every 8 hours of operation.
- 5) Lubricate P.T.O. shaft as indicated below:



- 6) Check oil level in gear box once a month. If necessary add oil.

- 7) Check tension of drive chain every 25 hours of operation and adjust if necessary.
- 8) Check for tightness of bearing collars every 50 hours of operation.
- 9) Change gearbox oil once a year. Use gear box oil S.A.E. W90 rated API, class GL-5.
- 10) Check all nuts and bolts once a year. If necessary use torque chart on page 44.
- 11) Standard scraper blades are reversible. Reverse when one edge is worn out.
- 12) Always use Grade 5 shear bolts.

6

STORAGE

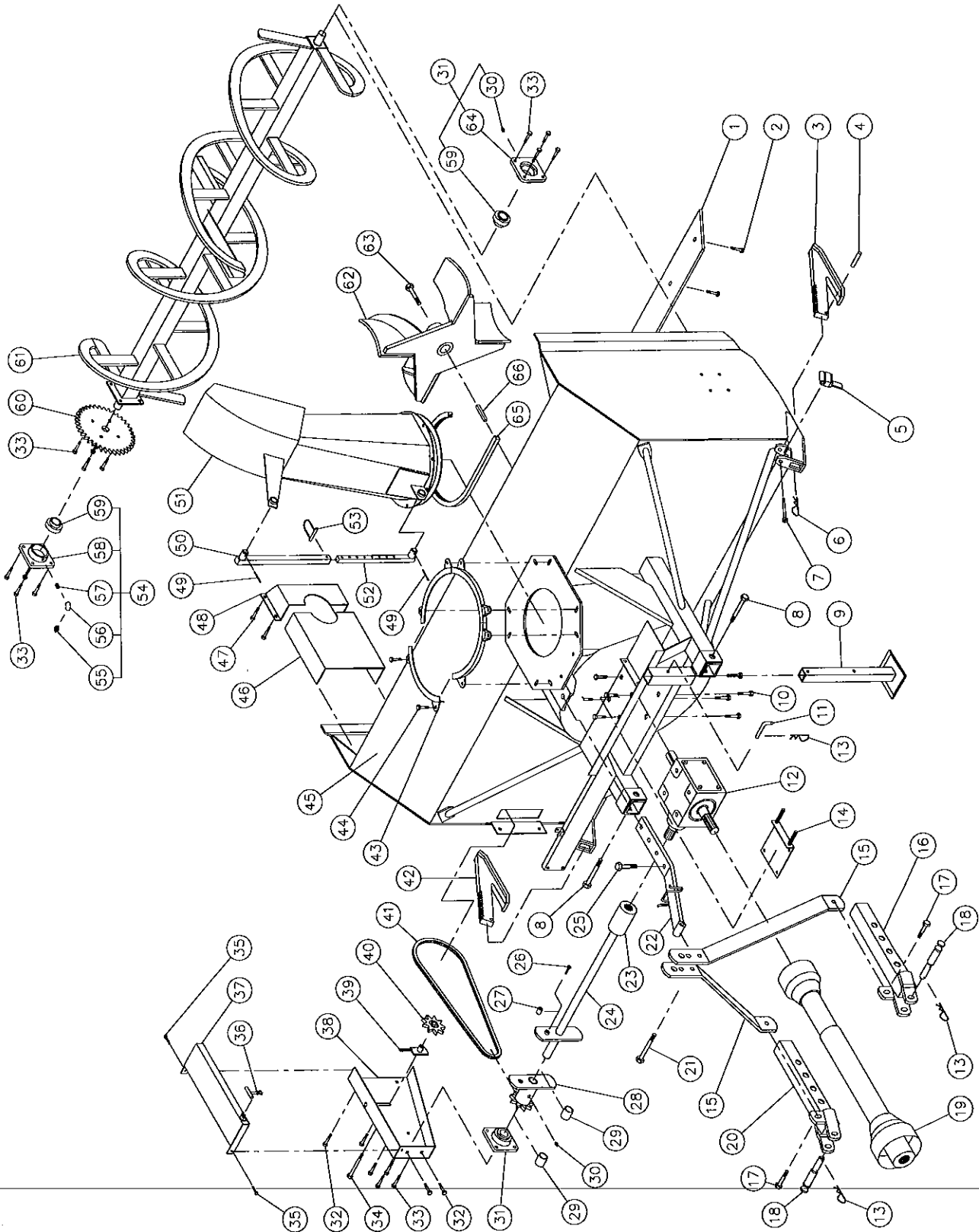
- 1) Store the Snowblower in a cool, dry place.
- 2) Support the Snowblower with wooden blocks.
- 3) Keep all piston rods in the retracted position. This will assure better protection against the elements.
- 4) Clean your Snowblower.
- 5) Thoroughly inspect all parts of the Snowblower. Replace or repair worn or defective parts.
- 6) Touch-up or repaint if necessary.
- 7) Lubricate all points before storage.

TROUBLESHOOTING

P.T.O. SHAFT

PROBLEM	POSSIBLE CAUSE	CORRECTION
<ul style="list-style-type: none"> - Premature wear of U-joints and/ or bluish color of cross journals. 	<ul style="list-style-type: none"> - Insufficient lubrication. - Excessive working angle. 	<ul style="list-style-type: none"> - Follow lubrication recommendations. - Replace defective U-joints. - Make sure the snowblower inlet face is perpendicular to the ground and if possible readjust 3-point in order to position the snowblower further away from tractor.
<ul style="list-style-type: none"> - Gripping or premature wear of telescoping members. 	<ul style="list-style-type: none"> - Too much sliding under load. - Tube overlap too-short: minimum recommended is 6". - Insufficient lubrication. - Contaminants (sand, etc.). 	<ul style="list-style-type: none"> - Do not raise snowblower while in operation. - Readjust 3-point in order to position the snowblower closer to the tractor. - Follow lubrication recommendations. - Replace defective telescopic members.
<ul style="list-style-type: none"> - Damaged or jammed locking pin or bolt. 	<ul style="list-style-type: none"> - Pin or orifice contaminated by sand, ice, etc. - Telescoping members too long, exerting pressure on locking device. 	<ul style="list-style-type: none"> - Clean and grease. - Readjust 3-point in order to position the snowblower further away from tractor.
<ul style="list-style-type: none"> - Premature wear of guard tube bearing ring. 	<ul style="list-style-type: none"> - Lack of lubrication. - Wrong installation of guard chain. - Part of the guard in contact with the equipment. 	<ul style="list-style-type: none"> - Follow lubrication instructions. - Adjust chain for non-interference between guard & equipment. - Replace worn or damaged bearing rings.
<ul style="list-style-type: none"> - Cut or deformed safety guard tubes. 	<ul style="list-style-type: none"> - Tubes in contact with the equipment. 	<ul style="list-style-type: none"> - Eliminate any interference between tubes and equipment or tractor. - Replace damaged tubes.

SNOWBLOWERS P-740 P-800 P-860



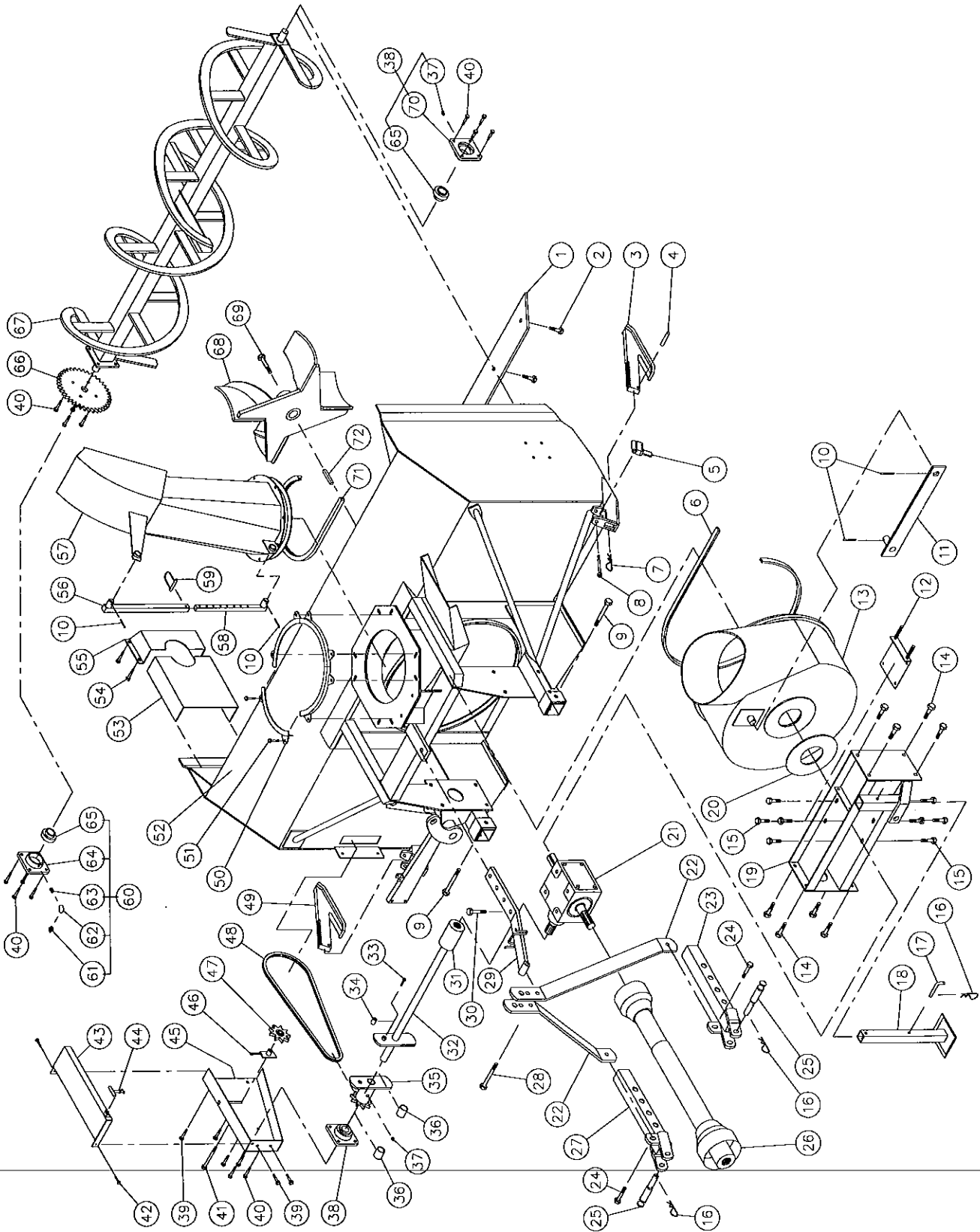
SNOWBLOWERS P-740 P-800 P-860 (cont'd)

REF.	PART #	DESCRIPTION	QTY		
			P-740	P-800	P-860
1	8129	Reversible scraper blade 3/8" x 4" x 70" lg	1	-	-
1	8130	Reversible scraper blade 3/8" x 4" x 76" lg	-	1	-
1	8131	Reversible scraper blade 3/8" x 4" x 82" lg	-	-	1
2	125-0715	Plow bolt 7/16" x 1 1/2" lg + nut & lock washer	7	8	9
3	8163-D	Skid shoe (right side)	1	1	1
4	Std.	Roll pin 1/4" x 1 1/2" lg	2	2	2
5	8162	Skid shoes lock	2	2	2
6	8111	Hitch pin clip 5/32" (CP-93H)	2	2	2
7	Std.	Bolt 1/2" NC x 4" lg + lock nut	2	2	2
8	Std.	Bolt 5/8" NC x 4 1/2" lg + nut & lock washer	2	2	2
9	8219	Storage support	1	1	1
10	Std.	Bolt 1/2" NC x 1" lg + lock washer	8	8	8
11	8220	Storage support pin	1	1	1
12	8115	Gear box T27D	1	1	1
13	Std.	Hitch pin clip 5/32"	3	3	3
14	8199	Adjustment plate for gear box + 4 nuts 1/2" NC	1	1	1
15	8005	3-points side bar	2	2	-
15	8036	3-points side bar	-	-	2
16	8936	Right lower hitch	1	1	1
17	Std.	Bolt 5/8" NC x 2" lg + nut & lock washer	2	2	2
18	8004	Pin category 1 & 2	2	2	2
19	8114-EG	P.T.O. shaft	1	1	-
19	8202	P.T.O. shaft	-	-	1
20	8935	Left lower hitch	1	1	1
21	Std.	Bolt 3/4" NC x 4 1/2" lg + nut & lock washer	1	1	1
22	8016	Upper hitch	1	1	-
22	8222	Upper hitch	-	-	1
23	6466	Splined adaptor 1 1/4"-19	1	1	1
24	8182	Auger drive shaft 26 7/16" lg overall	1	-	-
24	8007	Auger drive shaft 29 7/16" lg overall	-	1	-
24	8008	Auger drive shaft 32 7/16" lg overall	-	-	1
25	Std.	Bolt 3/4" NC x 2 1/2" lg + nut & lock washer	1	1	1
26	Std.	Bolt 1/4" NC x 2" lg + nut & lock washer	1	1	1
27	8164	Welded bushing 1/4" i.d. x 3/4" o.d. x 3/4" lg	2	2	2
28	8010	Sprocket #60 + shearplate	1	1	1
29	8009	Brass bushing 1 1/4" i.d. x 1 1/2" o.d. x 1 3/16" lg	2	2	2
30	Std.	Grease fitting 1/4"-28 straight	3	3	3
31	8011	Bearing 1 1/4" + flange	2	2	2
32	Std.	Bolt 7/16" NC x 1" lg + nut & lock washer	5	5	5
33	Std.	Bolt 7/16" NC x 1 1/2" lg + nut & lock washer	16	16	16
34	Std.	Bolt 1/2" NC x 3 1/2" lg + nut & lock washer & flat washer	1	1	1
35	Std.	Bolt 1/4" NC x 3/4" lg + nylon lock nut	2	2	2
36	8125	Rubber fastener	1	1	1
37	8181	Chain guard cover	1	1	1
38	8224	Chain guard	1	1	1
39	8128	Idler (hole 1/2") + 2 bolts 1/2" NC	1	1	1
40	8186	Idler sprocket #60 (steel)	1	1	1
41	8225	Chain #60 x 76 1/2" lg	1	1	1

SNOWBLOWERS P-740 P-800 P-860 (cont'd)

REF.	PART #	DESCRIPTION	QTY		
			P-740	P-800	P-860
42	8163-G	Skid shoe (left side)	1	1	1
43	8147	Retaining bracket	4	4	4
44	Std.	Bolt 5/8" NF x 1 1/2" lg + nut & lock washer & flat washer	8	8	8
45	---	Frame P-740	1	-	-
45	---	Frame P-800	-	1	-
45	---	Frame P-860	-	-	1
46	8017	Inside guard (welded)	1	1	1
47	Std.	Bolt 3/8" NC x 1" lg + nut & lock washer	4	4	4
48	8018	Inside guard (bolted)	1	1	1
49	Std.	Hairpin cotter 5/32" x 2" lg	2	2	2
50	8146	Chute adjusting tube	1	1	1
51	8155	Chute	1	1	1
52	8145	Chute adjusting rod	1	1	1
53	8112	Lock pin 1/4"	1	1	1
54	8011-C	Bearing 1 1/4" + flange + elbow grease fitting	1	1	1
55	Std.	Grease fitting 1/8"-NPT straight	1	1	1
56	8226	Elbow 90° 1/8"-NPT	1	1	1
57	8227	Straight joint 1/8"-NPT	1	1	1
58	8166-M	Modified flange	1	1	1
59	8165	Bearing 1 1/4" UC207-20	3	3	3
60	8021	Sprocket 60A38 T 1 1/4" ø	1	1	1
61	8023	Auger P-740	1	-	-
61	8024	Auger P-800	-	1	-
61	8025	Auger P-860	-	-	1
62	8193	Impeller 26" ø 4 blades	1	1	-
62	8194	Impeller 28" ø 4 blades	-	-	1
63	8228	Impeller cap screw 5/8" x 2" + lock washer	1	1	1
64	8166	Flange F207	2	2	2
65	8149	U-shaped UHMW ± 14" i. d.	1	1	1
66	8030	Square key 3/8" x 3/8" x 3 1/2" lg	1	1	1

SNOWBLOWERS P-740TRC P-800TRC P-860TRC



10

SNOWBLOWERS P-740TRC P-800TRC P-860TRC (cont'd)

REF.	PART #	DESCRIPTION	QTY		
			P-740TRC	P-800TRC	P-860TRC
1	8129	Reversible scraper blade 3/8" x 4" x 70" lg	1	-	-
1	8130	Reversible scraper blade 3/8" x 4" x 76" lg	-	1	-
1	8131	Reversible scraper blade 3/8" x 4" x 82" lg	-	-	1
2	125-0715	Plow bolt 7/16" NC x 1 1/2" lg + nut & lock washer	7	8	9
3	8163-D	Skid shoe (right side)	1	1	1
4	Std.	Roll pin 1/4" x 1 1/2" lg	2	2	2
5	8162	Skid shoes lock	2	2	2
6	8195	U-shaped UHMW 3/8" x 7/8" x 84 5/8" lg	1	1	-
6	8196	U-shaped UHMW 3/8" x 7/8" x 91" lg	-	-	1
7	8111	Hitch pin clip 5/32" (CP-93H)	2	2	2
8	Std.	Bolt 1/2" NC x 4" lg + lock nut	2	2	2
9	Std.	Bolt 5/8" NC x 4 1/2" lg + nut & lock washer	2	2	2
10	Std.	Cotter pin 5/32" x 2" lg	4	4	4
11	8037	Connecting rod 1/2" x 2" x 21" lg	1	1	-
11	8229	Connecting rod 1/2" x 2" x 22" lg	-	-	1
12	8199	Adjustment plate for gear box + 4 nuts 1/2" NC	1	1	1
13	8197	Rotary drum 26" ø	1	1	-
13	8198	Rotary drum 28" ø	-	-	1
14	Std.	Bolt 5/8" NC x 1 1/2" lg + nut & lock washer	8	8	8
15	Std.	Bolt 1/2" NC x 1" lg + lockwasher	8	8	8
16	Std.	Hitch pin clip 5/32"	3	3	3
17	8220	Storage support pin	1	1	1
18	8219	Storage support	1	1	1
19	8230	Gear box support	1	1	-
19	8231	Gear box support	-	-	1
20	8232	UHMW flat washer 1/8" x 4 5/8" i.d. x 8 1/8" o.d.	1	1	1
21	8115	Gear box T-27D	1	1	1
22	8036	3-points side bar	2	2	-
22	8180	3-points side bar	-	-	2
23	8936	Right lower hitch	1	1	1
24	Std.	Bolt 5/8" NC x 2" lg + nut & lock washer	2	2	2
25	8004	Pin category 1 & 2	2	2	2
26	8114-EG	P.T.O. shaft	1	1	-
26	8202	P.T.O. shaft	-	-	1
27	8935	Left lower hitch	1	1	1
28	Std.	Bolt 3/4" NC x 4 1/2" lg + nut & lock washer	1	1	1
29	8042	Upper hitch	1	1	-
29	8233	Upper hitch	-	-	1
30	Std.	Bolt 3/4" NC x 2 1/2" lg + nut & lock washer	1	1	1
31	6466	Splined adaptor 1-1/4" - 19	1	1	1
32	8006	Auger drive shaft 26 7/16" lg overall	1	-	-
32	8007	Auger drive shaft 29 7/16" lg overall	-	1	-
32	8008	Auger drive shaft 32 7/16" lg overall	-	-	1
33	Std.	Bolt 1/4" NC x 2" lg + nut & lockwasher	1	1	1
34	8164	Welded bushing 1/4" i.d. x 3/4" o.d. x 3/4" lg	2	2	2
35	8010	Sprocket #60 + shearplate	1	1	1

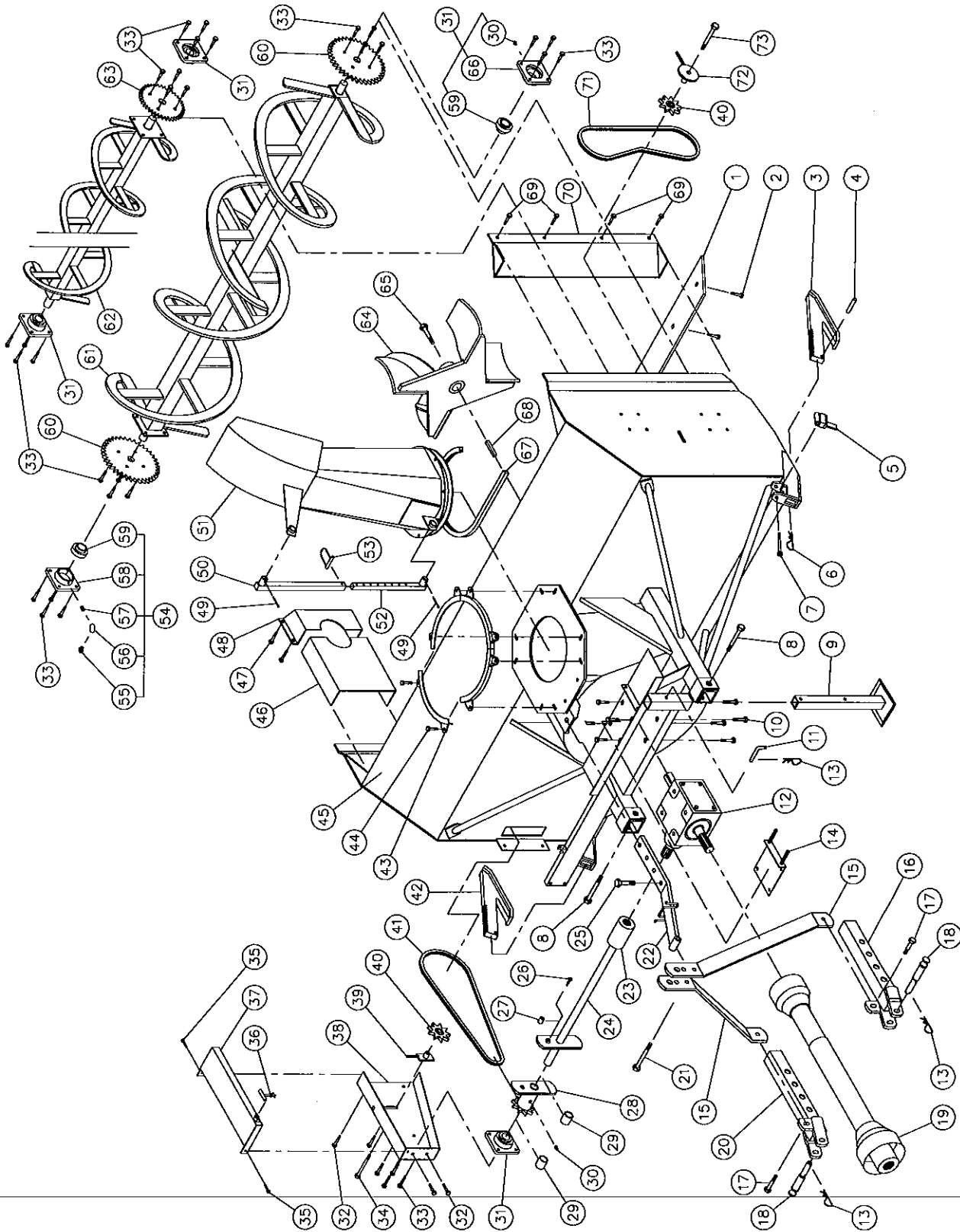
SNOWBLOWERS P-740TRC P-800TRC P-860TRC (cont'd)

REF.	PART #	DESCRIPTION	QTY		
			P-740TRC	P-800TRC	P-860TRC
36	8009	Brass bushing 1 1/4" i.d. x 1 1/2" o.d. x 1 3/16" lg	2	2	2
37	Std.	Grease fitting 1/4"-28 straight	3	3	3
38	8011	Bearing 1 1/4" + flange	2	2	2
39	Std.	Bolt 7/16" NC x 1" lg + nut & lock washer	5	5	5
40	Std.	Bolt 7/16" NC x 1 1/2" lg + nut & lockwasher	16	16	16
41	Std.	Bolt 1/2" NC x 3 1/2" lg + nut & lock washer & flatwasher	1	1	1
42	Std.	Bolt 1/4" NC x 3/4" lg + nylon lock nut	2	2	2
43	8181-T	Chain guard cover	1	1	1
44	8125	Rubber fastener	1	1	1
45	8234	Chain guard	1	1	1
46	8128	Idler (hole 1/2") + 2 nuts 1/2" NC	1	1	1
47	8186	Idler sprocket #60	1	1	1
48	8225	Chain #60 x 76 1/2"lg	1	1	1
49	8163-G	Skid shoe (left side)	4	4	4
50	8147	Retaining bracket	8	8	8
51	Std.	Bolt 5/8" NF x 1 1/2" lg + nut & lockwasher & flatwasher	1	-	-
52	---	Frame P-740TRC	-	1	-
52	---	Frame P-800TRC	-	-	1
52	---	Frame P-860TRC	1	1	1
53	8017	Inside guard (welded)	4	4	4
54	Std.	Bolt 3/8" NC x 1" lg + nut & lockwasher	1	1	1
55	8018	Inside guard (bolted)	1	1	1
56	8146	Chute adjusting tube	1	1	1
57	8155	Chute	1	1	1
58	8145	Chute adjusting rod	1	1	1
59	8112	Lock pin 1/4"	1	1	1
60	8011-C	Bearing 1 1/4" + flange	1	1	1
61	Std.	Grease fitting 1/8"-NPT straight	1	1	1
62	8226	Elbow 90° 1/8"-NPT	1	1	1
63	8227	Straight joint 1/8"-NPT	1	1	1
64	8166-M	Modified flange	3	3	3
65	8165	Bearing 1 1/4"	1	1	1
66	8021	Sprocket 60A38 T 1 1/4" ø	1	-	-
67	8023	Auger P-740	-	1	-
67	8024	Auger P-800	-	-	1
67	8025	Auger P-860	1	1	-
68	8193	Impeller 26" ø 4 blades	-	-	1
68	8194	Impeller 28" ø 4 blades	1	1	1
69	8228	Impeller cap screw 5/8" NC x 1 1/2" lg + lock washer	2	2	2
70	8166	Flange	1	1	1
71	8149	U-shaped UHMW ± 14" i. d.	1	1	1
72	8030	Square key 3/8" x 3/8" x 3 1/2" lg	1	1	1
NI*	Std.	Rotary drum safety-shear-bolt 3/8" NC x 2" lg + nut & lock washer	1	1	1

*NI = NOT ILLUSTRATED

10

SNOWBLOWER P-862



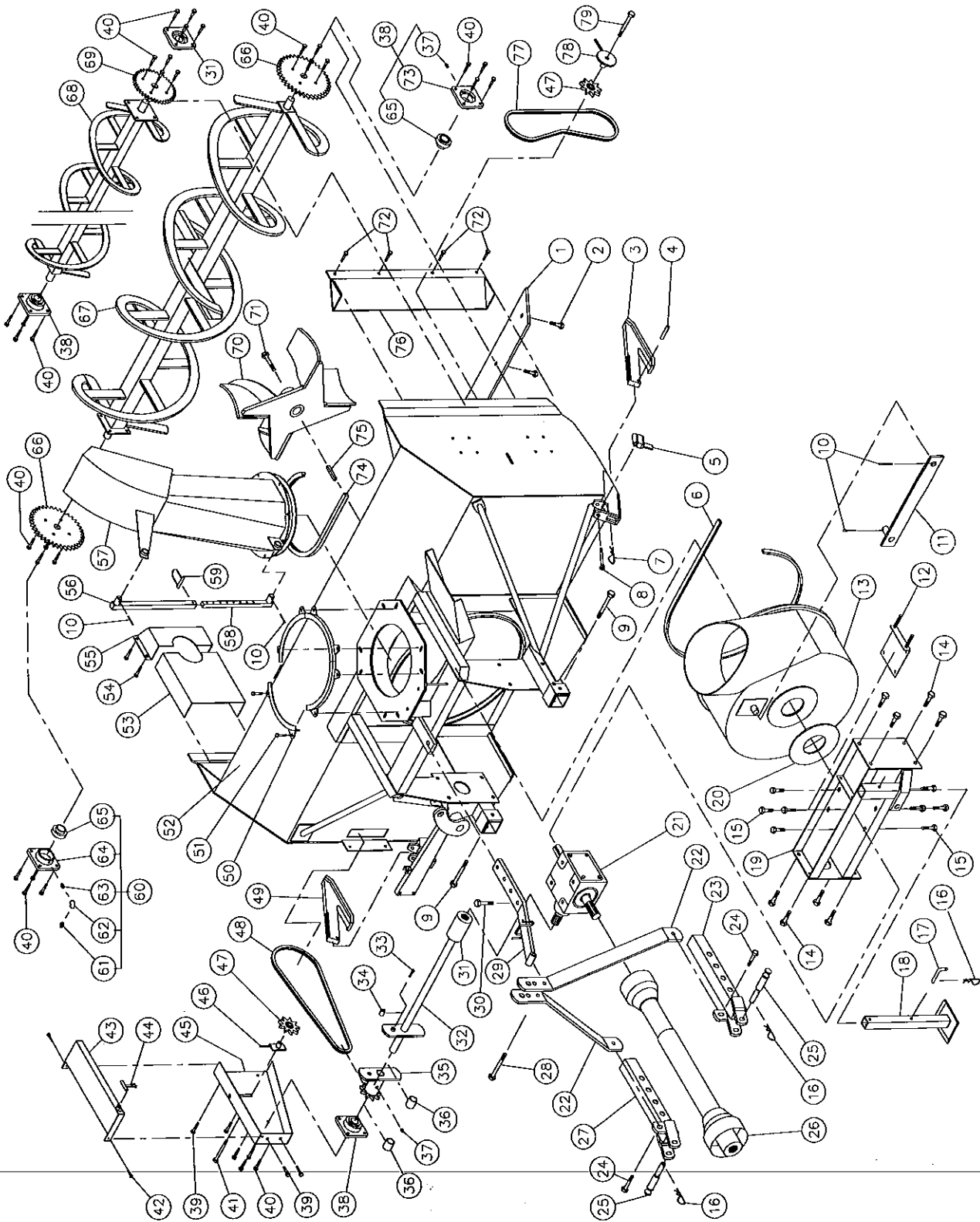
SNOWBLOWER P-862 (cont'd)

REF.	PART #	DESCRIPTION	QTY
1	8131	Reversible scraper blade 3/8" x 4" x 82" lg	1
2	125-0715	Plow bolt 7/16" NC x 1 1/2" lg + nut & lock washer	9
3	8163-D	Skid shoe (right side)	1
4	Std.	Roll pin 1/4" x 1 1/2" lg	2
5	8162	Skid shoes lock	2
6	8111	Hitch pin clip 5/32" (CP-93H)	2
7	Std.	Bolt 1/2" NC x 4" lg + lock nut	2
8	Std.	Bolt 5/8" NC x 4 1/2" lg + nut & lock washer	2
9	8219	Storage support	1
10	Std.	Bolt 1/2" NC x 1" lg + lock washer	8
11	8220	Storage support pin	1
12	8115	Gear box T27D	1
13	Std.	Hitch pin clip 5/32"	3
14	8199	Adjustment plate for gear box + 4 nuts 1/2" NC	1
15	8036	3-points side bar	2
16	8936	Right lower hitch	1
17	Std.	Bolt 5/8" NC x 2" lg + nut & lockwasher	2
18	8004	Pin category 1 & 2	2
19	8202	P.T.O. shaft	1
20	8935	Left lower hitch	1
21	Std.	Bolt 3/4" NC x 4 1/2" lg + nut & lock washer	1
22	8182	Upper hitch	1
23	6466	Splined adaptor 1 1/4" - 19	1
24	8008	Auger drive shaft 32 7/16" lg overall	1
25	Std.	Bolt 3/4" NC x 2 1/2" lg + nut & lock washer	1
26	Std.	Bolt 1/4" NC x 2" lg + nut & lock washer	1
27	8164	Welded bushing 1/4" i.d. x 3/4" o.d. x 3/4" lg	2
28	8010	Sprocket #60 + shearplate	1
29	8009	Brass bushing 1 1/4" i.d. x 1 1/2" o.d. x 1 3/16" lg	2
30	Std.	Grease fitting 1/4"-28 straight	3
31	8011	Bearing 1 1/4" + flange	2
32	Std.	Bolt 7/16" NC x 1" lg + nut & lock washer	5
33	Std.	Bolt 7/16" NC x 1 1/2" lg + nut & lock washer	16
34	Std.	Bolt 1/2" NC x 3 1/2" lg + nut & lock washer & flat washer	1
35	Std.	Bolt 1/4" NC x 3/4" lg + nylon locknut	2
36	8125	Rubber fastener	1
37	8181	Chain guard cover	1
38	8224	Chain guard	1
39	8128	Idler (hole 1/2") + 2 nuts 1/2" NC	1
40	8186	Idler sprocket #60 (steel)	2
41	8225	Chain # 60 x 76 1/2" lg	1
42	8163-G	Skid shoe (left side)	1
43	8147	Retaining bracket	4
44	Std.	Bolt 5/8" NF x 1 1/2" lg + nut & lock washer & flat washer	8
45	- - -	Frame P-862	1
46	8017	Inside guard (welded)	1
47	Std.	Bolt 3/8" NC x 1" lg + nut & lock washer	4
48	8018	Inside guard (bolted)	1
49	Std.	Hairpin cotter 5/32" x 2" lg	2
50	8146	Chute adjusting tube	1
51	8155	Chute	1

SNOWBLOWER P-862 (cont'd)

REF.	PART #	DESCRIPTION	QTY
52	8145	Chute adjusting rod	1
53	8112	Lock pin 1/4"	1
54	8011-C	Bearing 1 1/4" + flange + elbow grease fitting	1
55	Std.	Grease fitting 1/8"-NPT straight	1
56	8226	Elbow 90° 1/8"-NPT	1
57	8227	Straight joint 1/8"-NPT	1
58	8166-M	Modified flange F207	1
59	8165	Bearing 1 1/4" UC207-20	3
60	8021	Sprocket 60A38 T 1 1/4" ø	1
61	8139	Lower auger P-862	1
62	8134	Upper auger P-862	1
63	8144	Sprocket 60A30 T 1 1/4" ø	1
64	8194	Impeller 28" ø 4 blades	1
65	8228	Impeller cap screw 5/8" NC x 2" + lock washer	1
66	8166	Flange F207	2
67	8149	U-shaped UHMW ± 14" i. d.	1
68	8030	Square key 3/8" x 3/8" x 3 1/2" lg	1
69	Std.	Bolt 7/16" NC x 1 1/4" lg + nut & lock washer	4
70	8135	Drive chain guard (upper auger)	1
71	8141	Chain #60 x 65" lg	1
72	8136	Idler for upper auger (hole 1/2") + 2 nuts 1/2" NC	1
73	Std.	Bolt 1/2" NC x 4" lg + nut & lock washer & flat washer	1

SNOWBLOWER P-862TRC



10

SNOWBLOWER P-862TRC (cont'd)

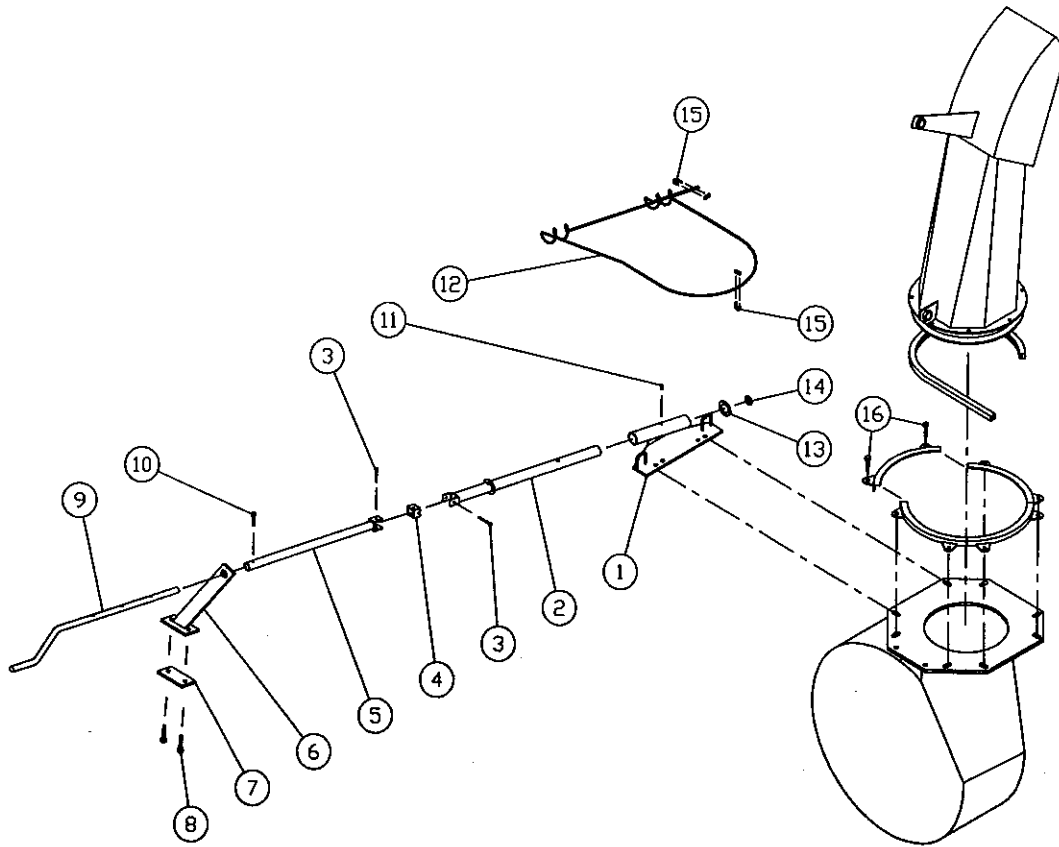
REF.	PART #	DESCRIPTION	QTY
1	8131	Reversible scraper blade 3/8" x 4" x 82" lg	1
2	125-0715	Plow bolt 7/16" NC x 1 1/2" lg + nut & lockwasher	9
3	8163-D	Skid shoe (right side)	1
4	Std.	Roll pin 1/4" x 1 1/2" lg	2
5	8162	Skid shoes lock	2
6	8196	U-shaped UHMW 3/8" x 7/8" x 91" lg	1
7	8111	Hitch pin clip 5/32" (CP-93H)	2
8	Std.	Bolt 1/2" NC x 4" lg + lock nut	2
9	Std.	Bolt 5/8" NC x 4 1/2" lg + nut & lock washer	2
10	Std.	Hairpin cotter 5/32" x 2" lg	4
11	8229	Connecting rod 1/2" x 2" x 22" lg	1
12	8199	Adjustment plate for gear box + 4 nuts 1/2" NC	1
13	8198	Rotary drum 28" ø	1
14	Std.	Bolt 5/8" NC x 1 1/2" lg + nut & lock washer	8
15	Std.	Bolt 1/2" NC x 1" lg + lock washer	8
16	Std.	Hitch pin clip 5/32"	3
17	8220	Storage support pin	1
18	8219	Storage support	1
19	8231	Gear box support	1
20	8232	UHMW flat washer 1/8" x 4 5/8" i.d. x 8 1/8" o.d.	1
21	8115	Gear box T-27D	1
22	8233	3-points side bar	2
23	8936	Right lower hitch	1
24	Std.	Bolt 5/8" NC x 2" lg + nut & lock washer	2
25	8004	Pin category 1 & 2	2
26	8202	P.T.O. shaft	1
27	8935	Left lower hitch	1
28	Std.	Bolt 3/4" NC x 4 1/2" lg + nut & lock washer	1
29	8233	Upper hitch	1
30	Std.	Bolt 3/4" NC x 2 1/2" lg + nut & lock washer	1
31	6466	Splined adaptor 1 1/4"-19	1
32	8008	Auger drive shaft 32 7/16" lg overall	1
33	Std.	Bolt 1/4" NC x 2" lg + nut & lock washer	1
34	8164	Welded bushing 1/4" i.d. x 3/4" o.d. x 3/4" lg	2
35	8010	Sprocket #60 + shearplate	1
36	8009	Brass bushing 1 1/4" i.d. x 1 1/2" o.d. x 1 3/16" lg	2
37	Std.	Grease fitting 1/4"-28 straight	3
38	8011	Bearing 1 1/4" + flange	2
39	Std.	Bolt 7/16" NC x 1" lg + nut & lock washer	5
40	Std.	Bolt 7/16" NC x 1 1/2" lg + nut & lock washer	16
41	Std.	Bolt 1/2" NC x 3 1/2" lg + nut & lockwasher & flatwasher	1
42	Std.	Bolt 1/4" NC x 3/4" lg + nylon locknut	2
43	8181-T	Chain guard cover	1
44	8125	Rubber fastener	1
45	8234	Chain guard	1
46	8128	Idler (hole 1/2") + 2 nuts 1/2" NC	1
47	8186	Idler sprocket #60	2
48	8225	Chain #60 x 76 1/2" lg	1
49	8163-G	Skid shoe (left side)	1
50	8147	Retaining bracket	4
51	Std.	Bolt 5/8" NF x 1 1/2" lg + nut & lock washer & flat washer	8

SNOWBLOWER P-862TRC (cont'd)

REF.	PART #	DESCRIPTION	QTY
52	---	Frame P-860TRC	1
53	8017	Inside guard (welded)	1
54	Std.	Bolt 3/8" NC x 1" lg + nut & lock washer	4
55	8018	Inside guard (bolted)	1
56	8146	Chute adjusting tube	1
57	8155	Chute	1
58	8145	Chute adjusting rod	1
59	8112	Lock pin 1/4"	1
60	8011-C	Bearing 1 1/4" + flange+ elbow grease fitting	1
61	Std.	Grease fitting 1/8"-NPT straight	1
62	8226	Elbow 90° 1/8"-NPT	1
63	8227	Straight joint 1/8"-NPT	1
64	8166-M	Modified flange	1
65	8165	Bearing 1 1/4"	3
66	8021	Sprocket 60A38 T 1 1/4" ø	1
67	8139	Lower auger P-862TRC	1
68	8134	Upper auger P-862TRC	1
69	8144	Sprocket 60A30 T 1 1/4" ø	1
70	8194	Impeller 28" ø 4 blades	1
71	8228	Impeller cap screw 5/8" NC x 1 1/2" lg + lock washer	1
72	Std.	Bolt 7/16 NC x 1 1/4" lg + nut & lock washer	4
73	8166	Flange F207	4
74	8149	U-shaped UHMW ± 14" i. d.	1
75	8030	Square key 3/8" x 3/8" x 3 1/2" lg	1
76	8135	Drive chain guard (upper auger)	1
77	8141	Chain #60 x 65" lg	1
78	8136	Idler for upper auger (hole 1/2") + 2 nuts 1/2" NC	1
79	Std.	Bolts 1/2" NC x 4" lg + nut & lock washer & flat washer	1
NI*	Std.	Rotary drum safety shear bolt 3/8" NC x 2" lg + nut & lock washer	1

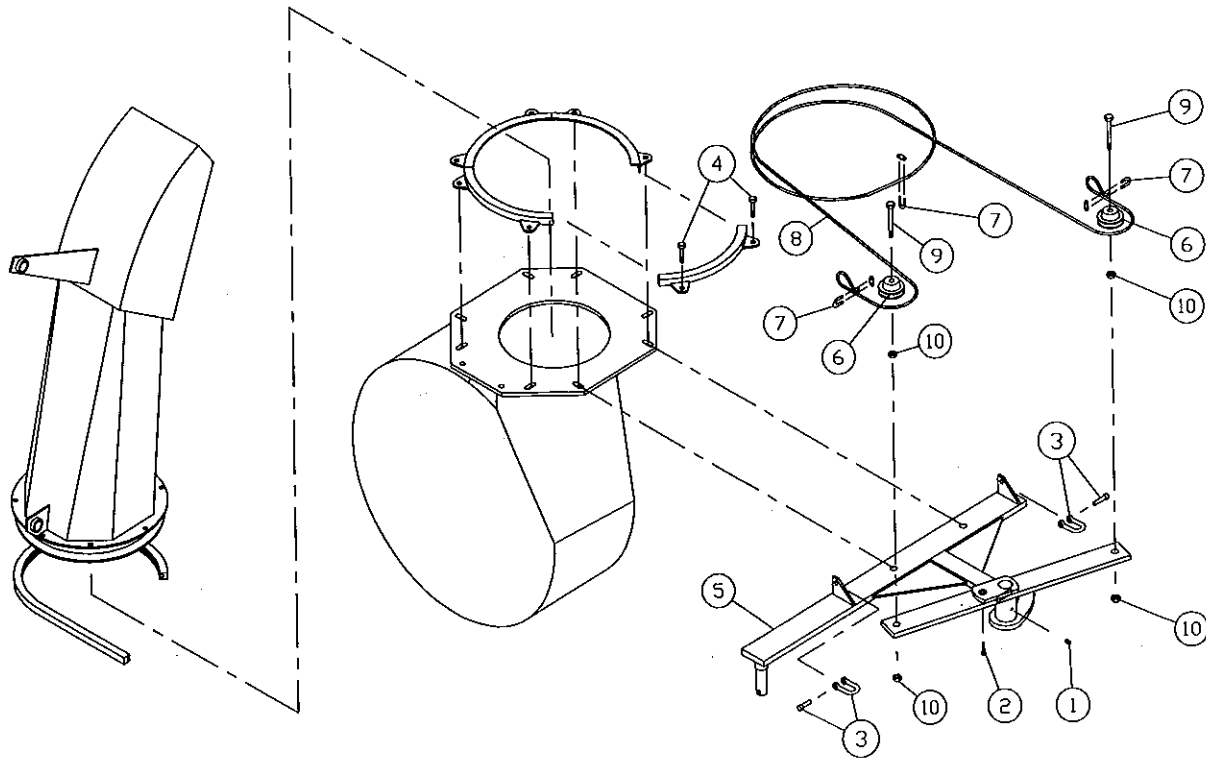
*NI = NOT ILLUSTRATED

MANUAL CHUTE KIT M-7486



REF.	PART #	DESCRIPTION	QTY
1	8203	Rotation system support	1
2	8090	Front tube	1
3	Std.	Bolt 1/4" x 2" lg + nylon lock nut	2
4	8089	Universal block	1
5	8204	Rear tube	1
6	8095	Crank support	1
7	8094	Support plate	1
8	Std.	Bolt 7/16" x 2" lg + nut & lock washer	2
9	8205	Crank	1
10	Std.	Bolt 1/4" x 1 1/2" lg + nylon locknut	1
11	Std.	Grease fitting 1/4"-28 straight	1
12	8092	Cable 1/8" x 108" lg	1
13	8206	Flat washer 1 3/8" i. d.	1
14	Std.	Flat washer 1/2" i. d.	1
15	6303	Cable clamp 1/8"	2
16	Std.	Bolt 5/8" NF x 2" lg + nut & lock washer & flat washer	2

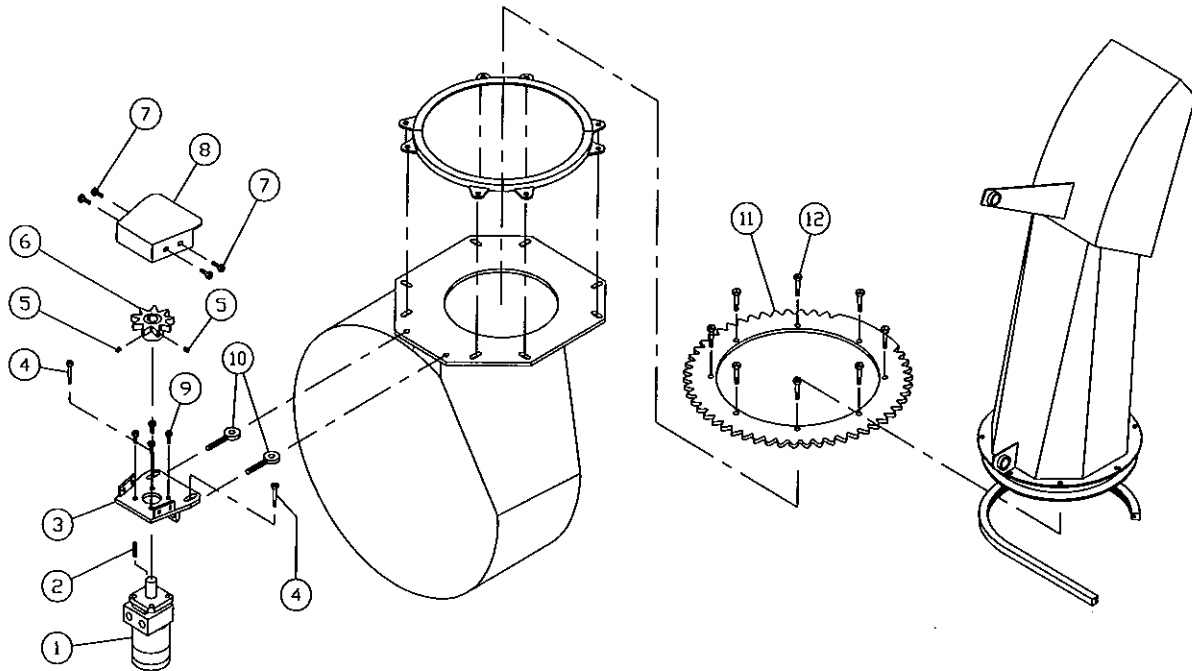
HYDRAULIC CHUTE KIT Cylinder H-7486



REF.	PART #	DESCRIPTION	QTY
1	Std.	Grease fitting 1/4"-28 straight	1
2	Std.	Safety shear bolt 3/8" NC x 2" + nut & lock washer	1
3	8097	Clevis 5/16"	2
4	Std.	Bolt 5/8" NF x 2 1/2" lg + nut & lock washer	1
5	8207	Frame	2
6	8098	Pulley 3"	3
7	8099	Cable clamp 1/4"	1
8	8100	Cable 1/4" x 152"	2
9	Std.	Bolt 5/8" NC x 3" lg	4
10	Std.	Nut 5/8"NC	1
NI*	25TR08	Cylinder	

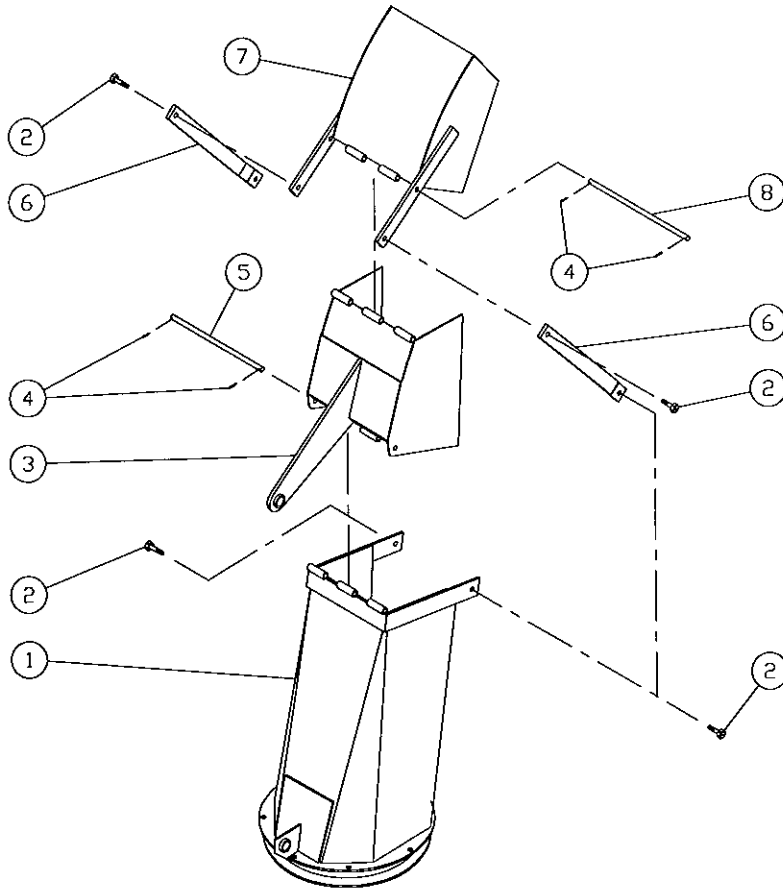
*NI = NOT ILLUSTRATED

HYDRAULIC CHUTE KIT Motor SP-7486



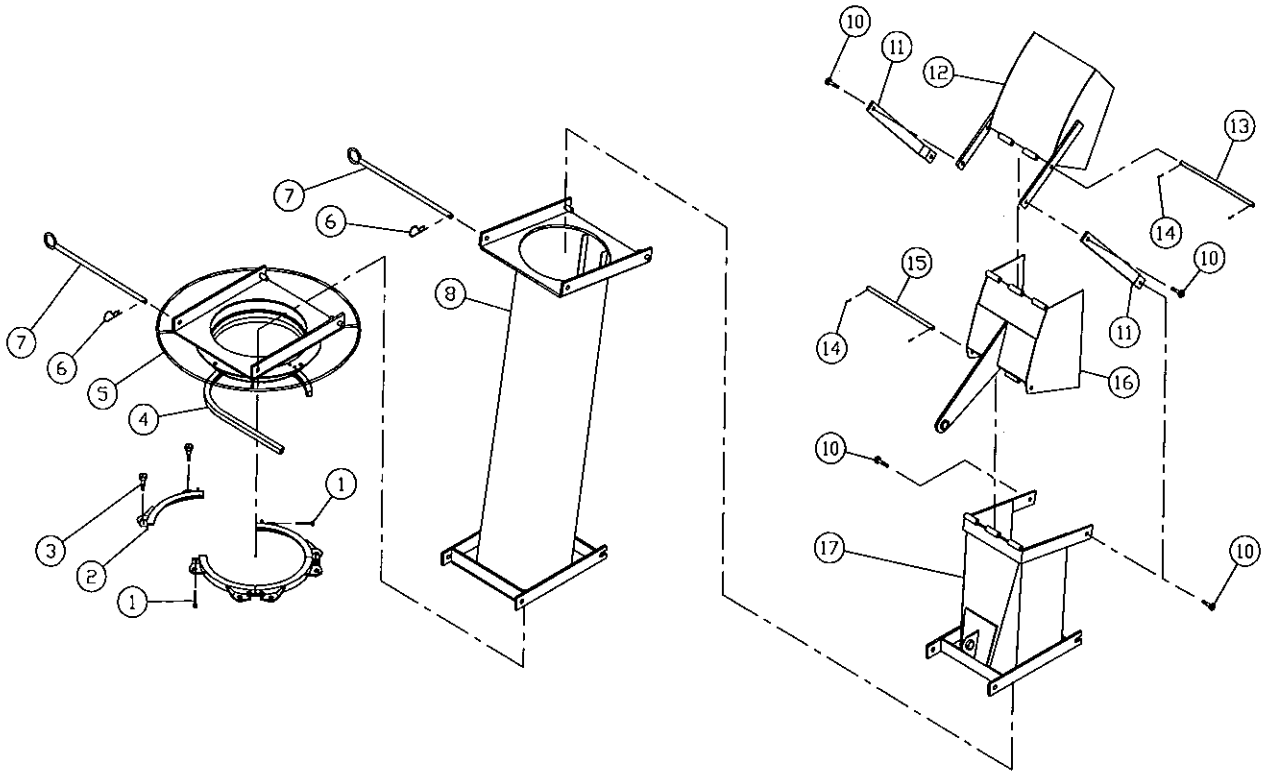
REF.	PART #	DESCRIPTION	QTY
1	---	Hydraulic motor (DH250 or DH315)	1
2	---	Key (as motor requirement)	1
3	8160	Motor mounting plate	1
4	Std.	Bolt 7/16" NC x 2" lg + nut + lock washer & flat washer	2
5	Std.	Allen set screw 3/8" NC x 3/8" lg	2
6	8159	Sprocket (9 teeth)	1
7	Std.	Bolt 3/8" NC x 3/4" lg + lock washer	4
8	8158	Guard	1
9	Std.	Bolt 3/8" NC x 1" lg + lock washer	4
10	8161	Take-up screws	2
11	8157	Ring gear (47 teeth)	1
12	Std.	Bolt 7/16" NC x 1 1/4" lg + nut & lock washer	8

SEMI-INDUSTRIAL CHUTE PSI-7486



REF.	PART #	DESCRIPTION	QTY
1	8208	Chute base	1
2	Std.	Bolt ½" x 1½" lg + nylon lock nut	4
3	8209	Lower chute deflector	1
4	Std.	Cotter pin 1/8" x 1" lg	4
5	8210	Lower chute deflector pin	1
6	8211	Connecting rod	2
7	8212	Upper chute deflector	1
8	8213	Upper chute deflector pin	1

INDUSTRIAL CHUTE PC-7486

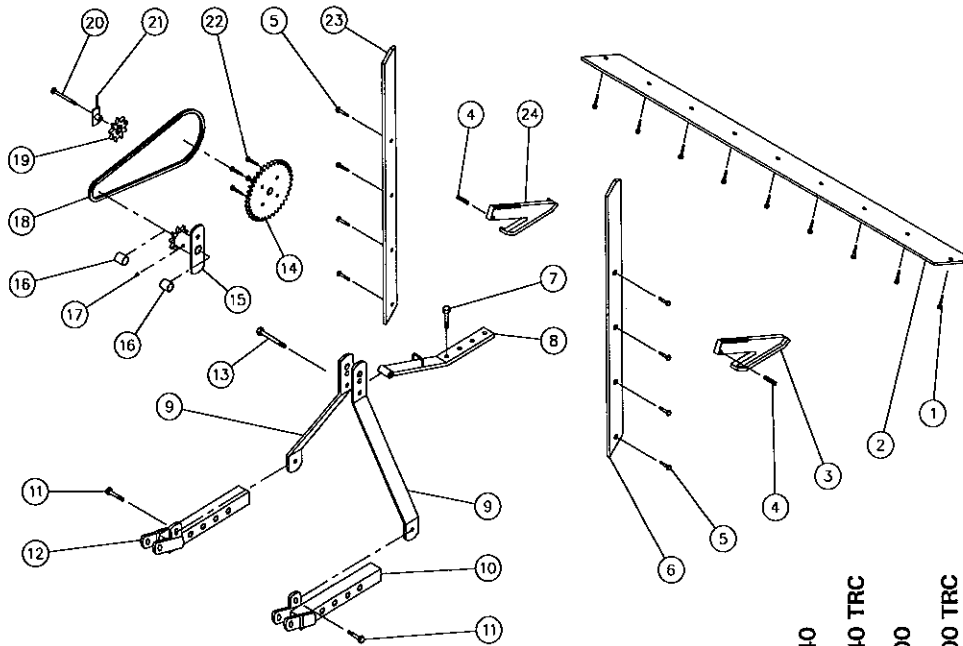


REF.	PART #	DESCRIPTION	QTY
1	Std.	Bolt 5/16" x 2" lg + nylon locknut	4
2	8147-1	"Industrial" retaining bracket 7486(TRC)	4
3	Std.	Bolt 5/8"NF x 1 1/2 lg + nut & lock washer & flat washer	8
4	8149	U-shaped UHMW ± 14" i. d.	1
5	8216	Chute adaptor with quick attach	1
6	Std.	Hitch pin clip 5/32"	2
7	8200	Pin for quick attach (adaptor & extension)	2
8	PR-7486	Extension 48" PR-7486	opt.
10	Std.	Bolt 1/2" NC x 1 1/2" lg + nylon lock nut	4
11	8211	Connecting rod	2
12	8212	Upper deflector	1
13	8213	Upper deflector pin	1
14	Std.	Cotter pin 1/8" x 1" lg	4
15	8210	Lower deflector pin	1
16	8219	Lower deflector	1
17	8215	Chute base	1
NI*	8217	"Industrial" chute assembly (includes # 10, 11, 12, 13, 14, 15, 16, 17)	1

10

NI= NOT ILLUSTRATED

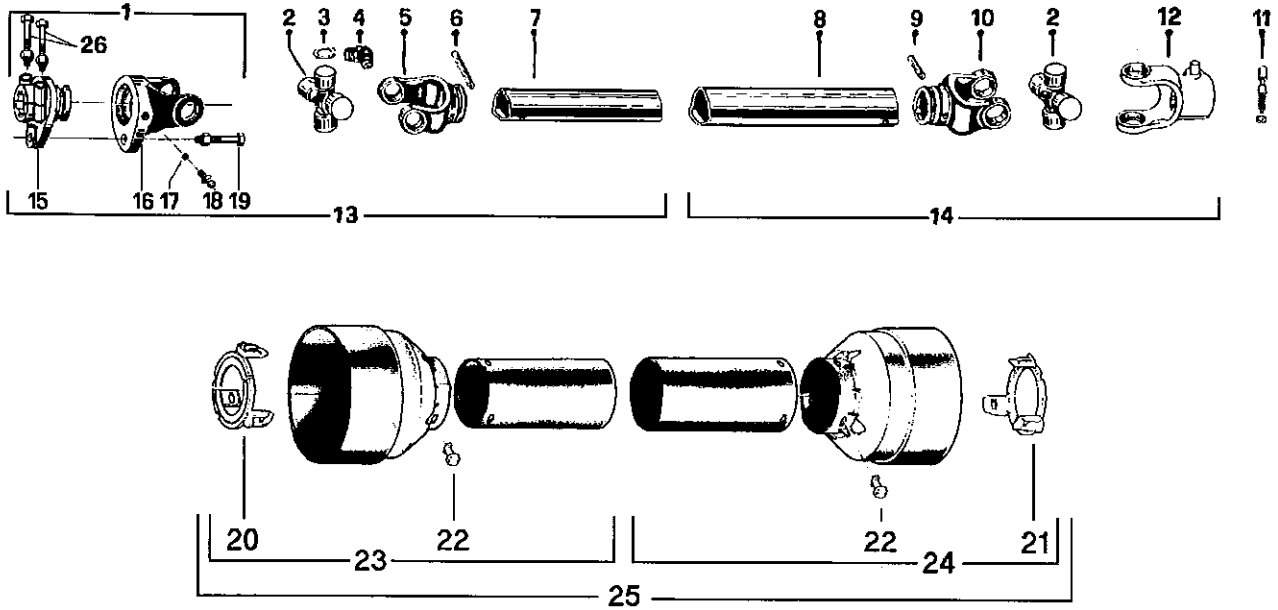
HEAVY DUTY KIT 7486



REF.	PART #	DESCRIPTION	P-740	P-740 TRC	P-800	P-800 TRC	P-860	P-860 TRC	P-862	P-862 TRC
1	125-0715	Plow bolt 7/16" NC x 1 1/2" lg + nut & lock washer	7	7	8	8	9	9	9	9
2	8167	Carbon steel scraper blade (not reversible)	1	1	-	-	-	-	-	-
2	8168	Carbon steel scraper blade (not reversible)	-	-	1	1	-	-	-	-
2	8169	Carbon steel scraper blade (not reversible)	-	-	-	-	1	1	1	1
3	8170-D	Carbon steel skid shoe (right side)	1	1	1	1	1	1	1	1
4	Std.	Roll pin 1/4" x 1 1/2" lg	2	2	2	2	2	2	2	2
5	125-0715	Plow bolt 7/16" NC x 1 1/2" lg + nut & lock washer	8	8	8	8	8	8	8	8
6	8175-D	Lateral blade (right side)	1	1	1	1	1	1	-	-
6	8214-D	Lateral blade (right side)	-	-	-	-	-	-	1	1
7	Std.	Bolt 5/8" x 2" lg + nut & lock washer	1	1	1	1	1	1	1	1
8	8171	Heavy duty upper hitch	1	-	1	-	-	-	-	-
8	8179	Heavy duty upper hitch	-	1	-	1	-	-	-	-
8	8191	Heavy duty upper hitch	-	-	-	-	1	-	1	-
8	8190	Heavy duty upper hitch	-	-	-	-	-	1	-	1
9	8172	Heavy duty 3-point side bar	2	-	2	-	-	-	-	-
9	8192	Heavy duty 3-point side bar	-	2	-	2	2	-	2	-
9	8187	Heavy duty 3-point side bar	-	-	-	-	-	2	-	2
10	8173	Heavy duty lower hitch (right side)	1	1	1	1	1	1	1	1
11	Std.	Bolt 5/8" x 2" lg + nut & lock washer	2	2	2	2	2	2	2	2
12	8174	Heavy duty lower hitch (left side)	1	1	1	1	1	1	1	1
13	Std.	Bolt (grade 12) 3/4" NC x 5" lg + nut & lock washer	1	1	1	1	1	1	1	1
14	8185	Sprocket 80A30 T 1 1/4" ø	1	1	1	1	1	1	1	1
15	8184	Sprocket with shearplate #80	1	1	1	1	1	1	1	1
16	8009	Brass bushing	2	2	2	2	2	2	2	2
17	Std.	Grease fitting 1/4"-28 straight	1	1	1	1	1	1	1	1
18	8188	Chain no. 80 x 75 3/4" lg	1	1	1	1	1	1	1	1
19	9287	Idler sprocket # 80	1	1	1	1	1	1	1	1
20	Std.	Bolt 1/2" x 3 1/2" lg + nut & lock washer	1	1	1	1	1	1	1	1
21	8187	Idler mounting bracket	1	1	1	1	1	1	1	1
22	Std.	Bolt 7/16" x 1 1/2" lg + nut & lock washer	4	4	4	4	4	4	4	4
23	8175-G	Lateral blade (left side)	1	1	1	1	1	1	-	-
23	8214-G	Lateral blade (left side)	-	-	-	-	-	-	1	1
24	8170-G	Carbon steel skid shoe (left side)	1	1	1	1	1	1	1	1

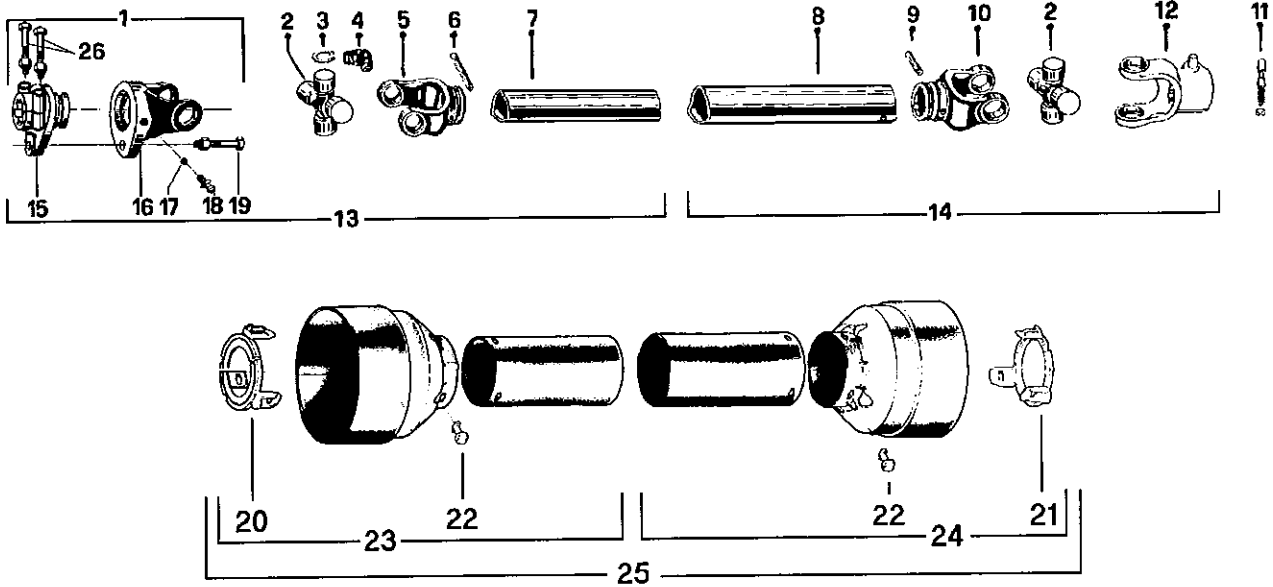
10

P.T.O. SHAFT # 8114-EG (T50)



REF.	PART #	DESCRIPTION	QTY
1	8221	Safety shear yoke (2 bolts)	1
2	8073	U joint + 4 retaining ring + 1 grease fitting	2
3	8061	Retaining ring	8
4	8110	Grease fitting	2
5	8079	Yoke for inner tube	1
6	6341	Stopper for inner tube	1
7	8077	Inner tube	1
8	8076	Outer tube	1
9	8142	Stopper for outer tube	1
10	8074	Yoke for outer tube	1
11	8068	Yoke stopper 1 3/8"	1
12	8250	Yoke with hole 1 3/8"-6 splines + yoke stopper 1 3/8"	1
13	8235	P.T.O. section, side with safety shear bolt, inner part, without protector	1
14	8236	P.T.O. section, side without safety shear bolt, outer part, without protector	1
15	8223	Adaptor (2 bolts)	1
16	8069	Yoke and shearplate	1
17	8070	Ball	17
18	8071	Grease fitting	1
19	8072	Safety shear bolt M10 x 50mm	1
20	8084-E	Bearing ring for inner guard tube	1
21	8083-E	Bearing ring for outer guard tube	1
22	8109	Stopper	6
23	8086-E	Inner shield	1
24	8085-E	Outer shield	1
25	8087	Complete shield	1
26	8222	Bolt M12 x 70mm + lock nut	2

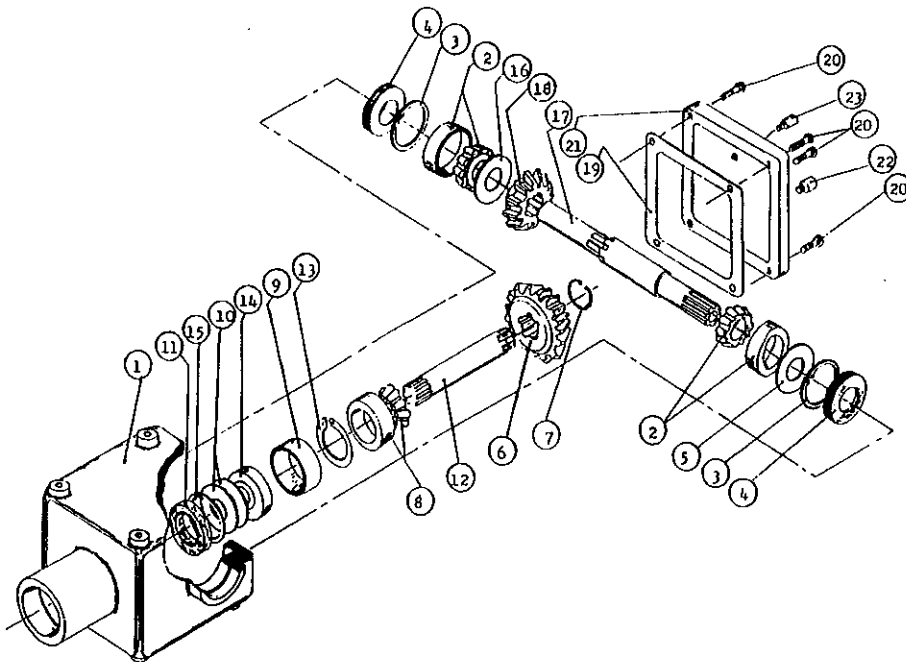
P.T.O. SHAFT # 8202 (T60)



REF.	PART #	DESCRIPTION	QTY
1	8237	Safety shear yoke (2 bolts)	1
2	8238	U joint + 4 retaining ring + 1 grease fitting	2
3	8061	Retaining ring	8
4	8110	Grease fitting	2
5	8239	Yoke for inner tube	1
6	8075	Stopper for inner tube	1
7	8077	Inner tube	1
8	9212	Outer tube	1
9	9210-E	Stopper for outer tube	1
10	8240	Yoke for outer tube	1
11	8068	Yoke stopper 1 3/8"	1
12	8250	Yoke with hole 1 3/8"-6 splines + yoke stopper 1 3/8"	1
13	8241	P.T.O. section, side with safety shear bolt, inner part, without protector	1
14	8242	P.T.O. section, side without safety shear bolt, outer part, without protector	1
15	8243	Adaptor (2 bolts)	1
16	8244	Yoke and shearplate	1
17	9205	Ball	17
18	8071	Grease fitting	1
19	8218	Safety shear bolt M10 x 60mm	1
20	8245	Bearing ring for inner guard tube	1
21	8246	Bearing ring for outer guard tube	1
22	8109	Stopper	6
23	8247	Inner shield	1
24	8248	Outer shield	1
25	8249	Complete shield	1
26	8222	Bolt M12 x 70mm + lock nut	2

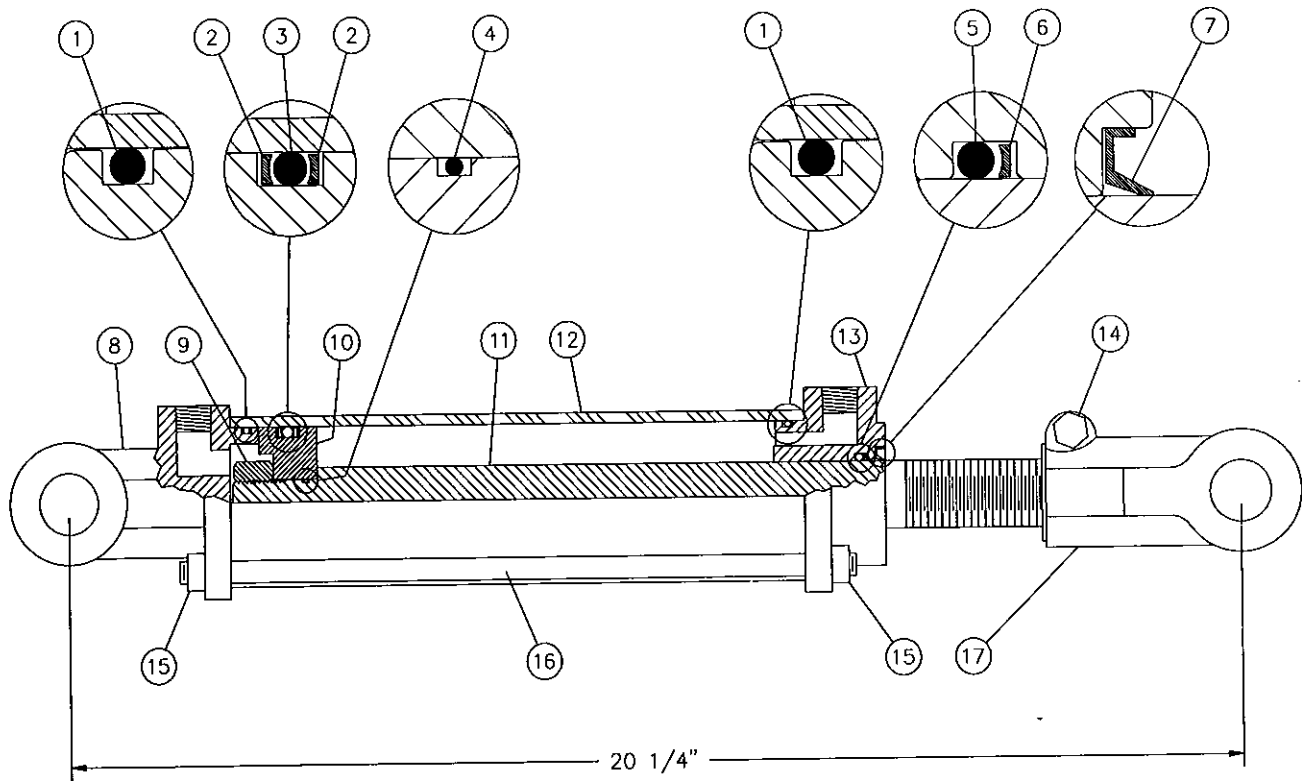
10

GEAR BOX # 8115 (T27D)



REF.	PART #	DESCRIPTION	QTY
1	8043	Casing	1
2	8044	Roller bearing no. 30208	2
3	8045	Inside circlip 80mm	2
4	8046	Oil seal 40 x 80 x 12mm	2
5	8047	Adjusting washer	1
6	8048	Gear Z18	1
7	8049	Outside circlip 40mm	1
8	8050	Roller bearing no. 30207	1
9	8051	Spacer ring	1
10	8052	Adjusting washer	2
11	8053	Oil seal 35 x 72 x 12mm	1
12	8054	Side shaft (1 1/4" - 19 splines)	1
13	8055	Inner circlip 72mm	1
14	8056	Ball bearing no. 6207	1
15	8057	Outer circlip 35mm	1
16	8058	Adjusting washer	1
17	8116	Impeller shaft (1 1/2" & 1 3/8" - 6 splines)	1
18	8060	Gear Z-18	1
19	8061	Gasket	1
20	8062	Bolt M10 x 14mm	4
21	8063	Cover	1
22	8064	Oil plug	1
23	8065	Oil filler plug	1

CYLINDER 25TR08

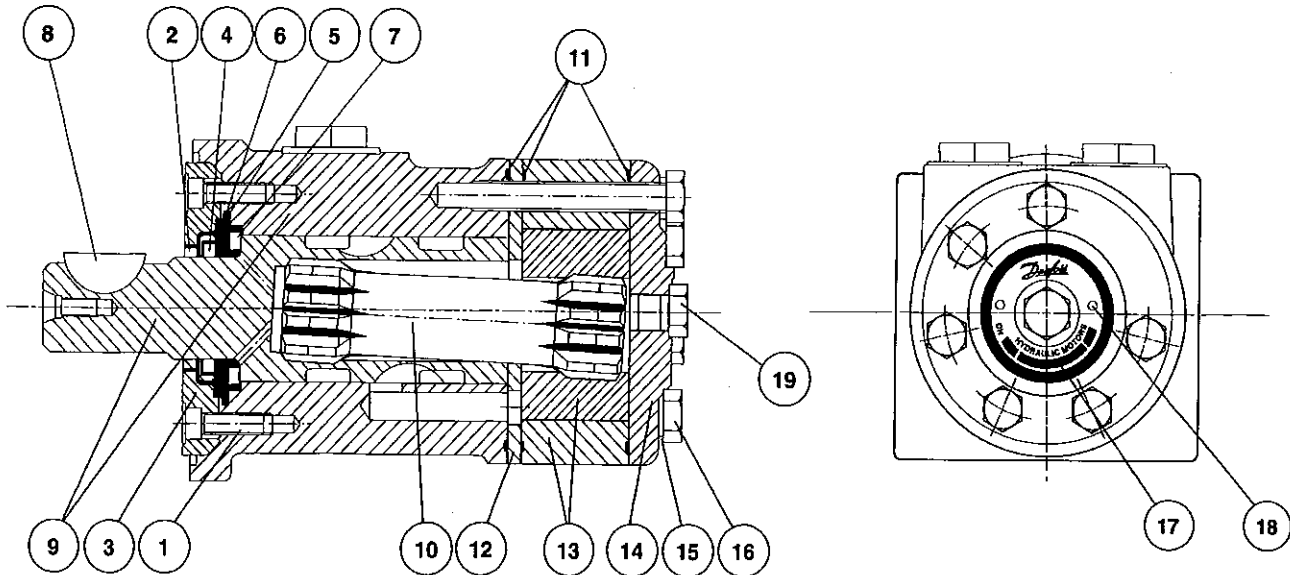


REF.	PART #	DESCRIPTION	QTY
1	See #RK25TR	O-ring 1/8" x 2 1/4" x 2 1/2"	2
2	See #RK25TR	Back-up 2 1/2" o.d. x 3/16 ø	2
3	See #RK25TR	O-ring 3/16" x 2 1/8" x 2 1/2"	1
4	See #RK25TR	O-ring 1/16" x 5/8" x 3/4"	1
5	See #RK25TR	O-ring 1/8" x 1 1/8" x 1 3/8"	1
6	See #RK25TR	Back-up 1 3/8" o.d. x 1/8" ø	1
7	See #RK25TR	Wiper 1 1/8" i.d. x 1 5/8" o.d.	1
8	492401	Yoke (for 2 1/2" tube)	1
9	Std.	Nut 3/4" NF	1
10	4924-31	Piston 2 1/2" ø	1
11	492028	Piston rod 1 1/8"	1
12	491668	Cylinder body 2 1/2" ø	1
13	492421	Head (for 2 1/2" tube)	1
14	Std.	Bolt 3/8" NC x 2 1/4" + nut	1
15	Std.	Nut 3/8" NC	8
16	Std.	Threaded rod 3/8" NC x 12" lg	4
17	458599	Yoke (for 1 1/8" rod)	1
NI*	8183	Pin 1" ø + cotter pin	2
NI*	RK25TR	Repair kit for cylinder 2 1/2" (includes # 1, 2, 3, 4, 5, 6, & 7)	1

*NI = NOT ILLUSTRATED

10

HYDRAULIC MOTOR # DH 250 & DH 315

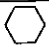


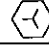

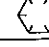
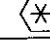


REF.	CODE #	DESCRIPTION	QTY	
			DH 250	DH 315
1	681X1961	Screw M5 x 16mm.....	6	6
2	151-1313	Dust seal ring	1	1
3	151-1827	Spigot flange	1	1
4	633B3385	Shaft seal BAKDH ring	1	1
5	633B1333	O-ring	1	1
6	151-1608	Bearing race	1	1
7	151-1458	Axial needle bearing	1	1
8	682L9054	Woodruff key	1	1
9	-----	Housing and output shaft	not sold	
10	151-2649	Cardan shaft.....	1	-
10	151-2650	Cardan shaft.....	-	1
11	633B1173	O-ring	3	3
12	151-1713	Distributor plate	1	1
13	151-1193	Gear wheel set.....	1	-
13	151-1186	Gear wheel set.....	-	1
14	151-2641	End cover	1	1
15	684X2481	Washer	6	6
16	681X0184	Screw M8 x 1.25mm Din 931 x 60mm lg.....	6	-
16	681X0186	Screw M8 x 1.25mm Din 931 x 70mm lg.....	-	6
17	151A0415	Name plate	1	1
18	681Z1011	Drive screw	2	2
19	631X2013	Drain plug 7/16"-20 UNF.....	1	1
NI*	151-1273	Set of seals	1	1




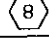
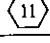
*NI = NOT ILLUSTRATED

TORQUE CHART

TORQUE SPECIFICATION TABLE

Thread UNC and UNF		Grade 2 				Grade 5   				Grade 8*   			
Bolt size		Torque				Torque				Torque			
Inches	mm	Pound feet		Newton meters		Pound feet		Newton meters		Pound feet		Newton meters	
		min.	max.	min.	max.	min.	max.	min.	max.	min.	max.	min.	max.
1/4	6.35	5	6	6.8	8.13	9	11	12.2	14.9	12	15	16.3	30.3
5/16	7.94	10	12	13.6	16.3	17	20.5	23.1	27.8	24	29	32.5	39.3
3/8	9.53	20	23	27.1	31.2	35	42	47.5	57.0	45	54	61.0	73.2
7/16	11.11	30	35	40.7	47.4	54	64	73.2	86.8	70	84	94.9	113.9
1/2	12.70	45	52	61.0	70.5	80	96	108.5	130.2	110	132	149.2	179.0
9/16	14.29	65	75	88.1	101.6	110	132	149.2	179.0	160	192	217.0	260.4
5/8	15.88	95	105	128.7	142.3	150	180	203.4	244.1	220	264	298.3	358.0
3/4	19.05	150	185	203.3	250.7	270	324	366.1	439.3	380	456	515.3	618.3
7/8	22.23	160	200	216.8	271.0	400	480	542.4	650.9	600	720	813.6	976.3
1	25.40	250	300	338.8	406.5	580	696	786.5	943.8	900	1080	1220.4	1464.5
1 1/8	25.58	-	-	-	-	800	880	1084.8	1193.3	1280	1440	1735.7	1952.6
1 1/4	31.75	-	-	-	-	1120	1240	1518.7	1681.4	1820	2000	2467.9	2712.0
1 3/8	34.93	-	-	-	-	1460	1680	1979.8	2278.1	2380	2720	3227.3	3688.3
1 1/2	38.10	-	-	-	-	1940	2200	2630.6	2983.2	3160	3560	4285.0	4827.4

* Thick nuts must be used with grade 8 bolts.

Size of screw	Thread	Pitch (mm.)	Grade 4T  				Grade 7T 				Grade 8T  			
			Torque				Torque				Torque			
			Pound feet		Newton meters		Pound feet		Newton meters		Pound feet		Newton meters	
		min.	max.	min.	max.	min.	max.	min.	max.	min.	max.	min.	max.	
M6	UNC	1.00	3.6	5.8	4.9	7.9	5.8	9.4	7.9	12.7	7.2	10	9.8	13.6
M8	UNC	1.25	7.2	14	9.8	19	17	22	23	29.8	20	26	27.1	35.2
M10	UNC	1.5	20	25	27.1	33.9	34	40	46.1	54.2	38	46	51.5	62.3
M12	UNC	1.75	28	34	37.9	46.1	51	59	69.1	79.9	57	66	77.2	89.4
M14	UNC	2.0	49	56	66.4	75.9	81	93	109.8	126	96	109	130.1	147.7
M16	UNC	2.0	67	77	90.8	104.3	116	130	157.2	176.2	129	145	174.8	196.5
M18	UNC	2.0	88	100	119.2	136	150	168	203.3	227.6	175	194	237.1	262.9
M20	UNC	2.5	108	130	146.3	176.2	186	205	252	277.8	213	249	288.6	337.4
M8	UNF	1.0	12	17	16.3	23	19	27	25.7	36.6	22	31	29.8	42
M10	UNF	1.25	20	29	27.1	39.3	35	47	47.4	63.7	40	52	54.2	70.5
M12	UNF	1.25	31	41	42	55.6	56	68	75.9	92.1	62	75	84	101.6
M14	UNF	1.5	52	64	70.5	86.7	90	106	122	143.6	107	124	145	168
M16	UNF	1.5	69	83	93.5	112.5	120	138	162.6	187	140	158	189.7	214.1
M18	UNF	1.5	100	117	136	158.5	177	199	239.8	269.6	202	231	273.7	313
M20	UNF	1.5	132	150	178.9	203.3	206	242	279.1	327.9	246	289	333.3	391.6

Use the above torques when special torque is not given.

NOTE: These values apply to fasteners as received from supplier, dry, or when lubricated with normal engine oil. They do not apply if extreme pressure lubricants are used.

WARRANTY

PRONOVOST warrants this product to the initial purchaser for the period of one year from the date of purchase against defects in materials and workmanship.

We will replace or repair defective parts free of charge if they are returned to our plant in St-Tite, Quebec, Canada.

Transportation charges are the responsibility of the customer. This warranty is not transferable.

Hydraulic cylinders and motors are covered by the manufacturer of these items.

All PRONOVOST spare parts purchased are covered by a three (3) month warranty.

This warranty becomes void and nul if the equipment is modified, breaks down as the result of an accident, if not operated according to manufacturer's recommendations, damaged by negligence or if maintenance has not been carried out as specified.

Our obligation is limited to the replacement or repair of the defective part. PRONOVOST accepts no responsibility for direct or indirect consequential damages of any kind.

12

Ce manuel est aussi disponible en français.
Veuillez téléphoner.



LES MACHINERIES PRONOVOST INC.
260, route 159,
Saint-Tite, Quebec, Canada, G0X 3H0
Tel.: (418) 365-7551, Fax: (418) 365-7954