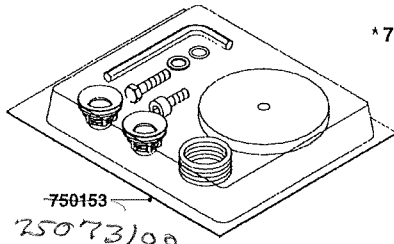


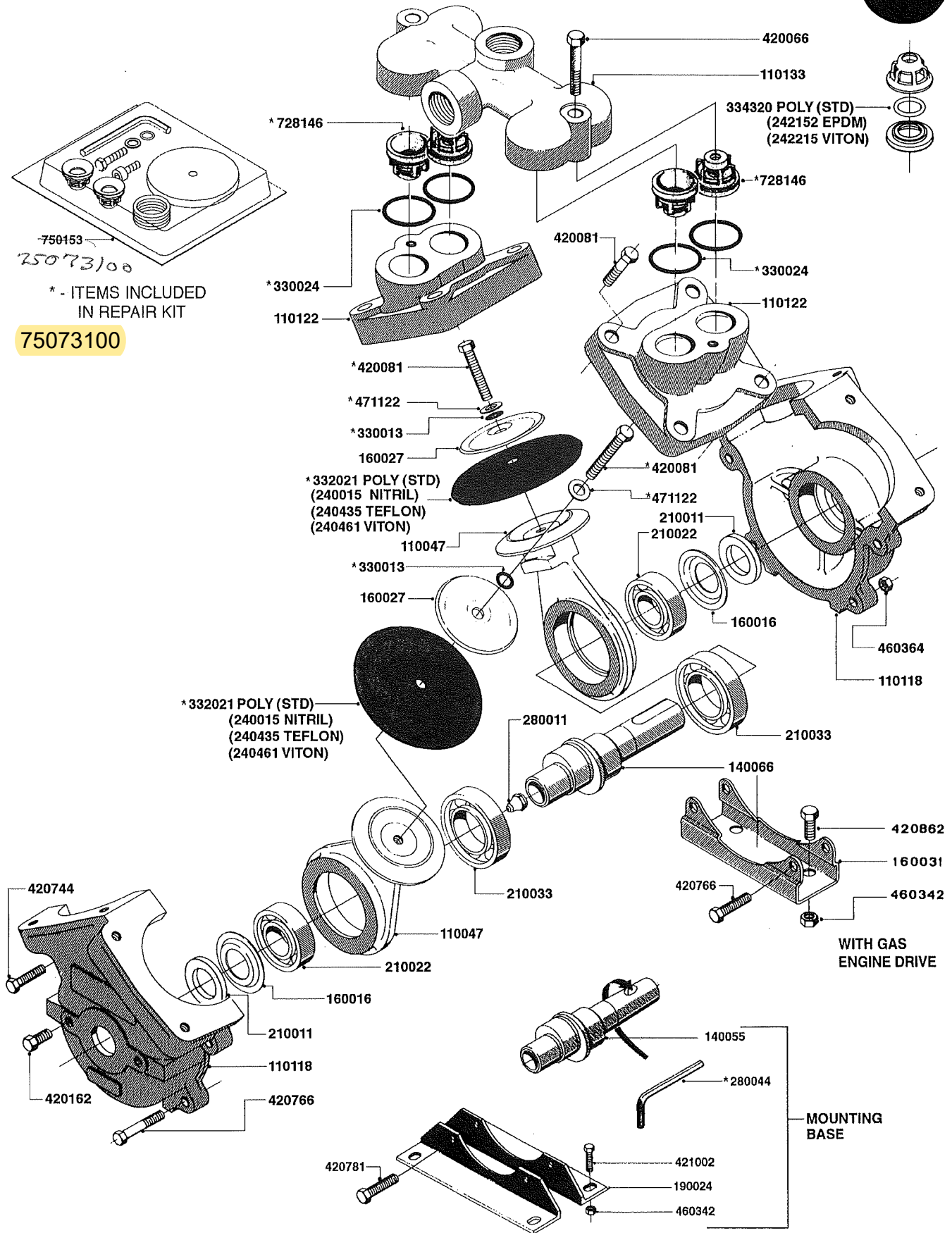
# PUMP - 600



750153  
75073100

\* - ITEMS INCLUDED  
IN REPAIR KIT

75073100



DESCRIPTIONS ON BACK OF PAGE



# PUMP - 600

| ITEM # | DESCRIPTION                         |
|--------|-------------------------------------|
| 110047 | CONNECTING ROD MODEL 500-600.....   |
| 110118 | PUMP CASTING 600.....               |
| 110122 | DIAPHRAGM COVER MODEL 600.....      |
| 110133 | VALVE CHAMBER MOD 600 PAINTED.....  |
| 140055 | CRANK SHAFT, MODEL 600.....         |
| 140066 | CRANK SHAFT, MODEL 600/4.....       |
| 160016 | DUST PLATE.....                     |
| 160027 | DIAPHRAGM UPPER DISC 500-600.....   |
| 160031 | BASE PLATE MODEL 500-600.....       |
| 190024 | ANGLE IRON FOOT, MODEL 500-600..... |
| 210011 | SEAL FELT D40/25X4.....             |
| 210022 | BEARING BALL 6205.....              |
| 210033 | BEARING BALL 6007.....              |
| 240015 | DIAPHRAGM MODEL 500-600 NITRIL..... |
| 240435 | DIAPHRAGM MODEL 500-600 TEFLON..... |
| 240461 | DIAPHRAGM MODEL 500-600 VITON.....  |
| 242152 | O-RING D18.2X3 EPDM.....            |
| 242215 | O-RING D18X3 VITON.....             |
| 280011 | GREASE NIPPLE 1/8" H TR.....        |
| 280044 | KEY HEXAGON W6 3/16".....           |
| 330013 | O-RING D15/D10X2.5 F.3/8"NUT.....   |
| 330024 | O-RING D41,1/D34.5 X 3,5.....       |
| 332021 | DIAPHRAGM MODEL 500-600 POLY.....   |
| 334320 | O-RING D18X3 POLYURETHANE.....      |
| 420066 | BOLT HEX 8.8 DEL 3/8"X50MM.....     |
| 420081 | BOLT HEX 8.8 DEL 3/8"X40MM.....     |
| 420162 | BOLT HEX 8.8 DEL 3/8"x15MM.....     |
| 420744 | BOLT HEX 8.8 DEL M8X40.....         |
| 420766 | BOLT HEX 8.8 DEL M8X45.....         |
| 420781 | BOLT HEX 8.8 DEL M8X50.....         |
| 420862 | BOLT HEX 8.8 DEL M10X15 FT.....     |
| 421002 | BOLT HEX 8.8 DEL M10X30 FT.....     |
| 460342 | NUT HEX M10.....                    |
| 460364 | NUT HEX M8 GALV.....                |
| 471122 | WASHER D20/D10.5X2.....             |
| 728146 | VALVE FOR 361(726890/707932).....   |
| 750153 | PUMP KIT F.600.....                 |