

-  Tillage
-  Haulage
-  Landscaping
-  Seeding & Plantation
-  Crop Protection
-  Harvest
-  Post Harvest

*Solutions...*



## BERI UDYOG PVT LTD

Corporate Office:

Plot No. 235 to 240, Sec-3, HSIIDC, Karnal- 132001 (Haryana), India

+91 184 2221571/ 72/ 73 [info@fieldking.com](mailto:info@fieldking.com), [www.fieldking.com](http://www.fieldking.com)



## Heavy Duty Hydraulic Harrow



➤ [Operator Manual](#) ➤ [Service Manual](#) ➤ [Part Catalogue](#)

# CONGRATULATIONS!

You have invested in one of the best implements of its type in the market today.

The care you give your "FIELDKING" implement will greatly determine your satisfaction with its performance and its service life. A careful study of this manual will give you a thorough understanding of your new implement before operating.

If your manual is lost or destroyed, "FIELDKING" will be glad to provide you a new copy. Visit to nearest dealership & get a copy. Most of our manuals can also be downloaded from our website at [www.fieldking.com](http://www.fieldking.com).

As an authorized "FIELDKING" dealer, we stock genuine "FIELDKING" parts which are manufactured with the same precision and skill as our original equipment. Our trained service persons are well informed on methods required to service "FIELDKING" equipments and are ready to help you.

Should you require additional information or assistance, please contact us.

YOUR AUTHORIZED

FIELDKING DEALER

BECAUSE "FIELDKING" MAINTAINS AN ONGOING PROGRAMME OF PRODUCT IMPROVEMENT, WE RESERVE THE RIGHT TO MAKE IMPROVEMENTS IN DESIGN OR CHANGE IN SPECIFICATION WITHOUT INCURRING ANY OBLIGATION TO INSTALL THEM ON UNITS PREVIOUSLY SOLD. BECAUSE OF THE POSSIBILITY THAT SOME PHOTOGRAPHS IN THIS MANUAL WERE TAKEN OF PROTOTYPE MODELS, PRODUCTION MODELS MAY VARY IN SOME DETAIL. IN ADDITION, SOME PHOTOGRAPHS MAY SHOW SHIELDS REMOVED FOR THE PURPOSE OF CLARITY. NEVER OPERATE THIS IMPLEMENT WITHOUT ALL SHIELDS IN PLACE.

## TO THE PURCHASER

This manual contains valuable information about your new "FIELDKING" heavy duty hydraulic harrow. It has been carefully prepared to give you helpful suggestions for operating, adjusting, servicing and ordering spare parts.

Keep this manual in a convenient place for quick and easy reference. Study it carefully. You have purchased a dependable and sturdy heavy duty hydraulic harrow but only by proper care and operation you can expect to receive the service and long life designed and built into it.

Sometime in the future your heavy duty hydraulic harrow may need new parts to replace those that are worn or broken. If so, go to your dealer and provide him with the model and part number.

### CUSTOMER INFORMATION

Name \_\_\_\_\_

Purchased From \_\_\_\_\_

Date of Purchase \_\_\_\_\_

Model No. \_\_\_\_\_

Serial No. \_\_\_\_\_

## PURCHASER / OPERATOR'S RESPONSIBILITY

1. Read and understand the information contained in this manual.
2. Operate, lubricate, assemble and maintain the equipment in accordance with all instructions and safety procedures in this manual.
3. Inspect the equipment and replace or repair any parts that are damaged or worn out which under continued operation would cause damage, wear to other parts, or cause a safety hazard.
4. Return the equipment or parts to the authorized "FIELDKING" dealer, from where it was purchased, for service or replacement of defective parts that are covered by warranty. (The "FIELDKING" Factory may inspect equipment or parts before warranty claims are honored.)
5. All costs incurred by the dealer for traveling to or transporting the equipment for warranty inspection and claims will be borne by the customer.

# INDEX

## **1. TECHNICAL DATA**

1.1 Introduction

1.2 Warranty

1.3 When the warranty becomes void

1.4 Warning

## **2. USAGE INSTRUCTIONS**

2.1 Before Use & Adjustments

2.2 Attaching Harrow to the tractor

2.3 Warning for driver

2.4 Safety

## **3. MAINTENANCE**

3.1 Maintenance Instructions

3.2 Storage of machine after work

3.3 Lubrication

3.4 Instruction for driver

## **4. OPERATIONAL GUIDELINES FOR HARROW**

## **5. TROUBLE SHOOTING CHART**

## 1. TECHNICAL DATA

### 1.1 INTRODUCTION

This handbook contains the use and maintenance instructions with a list of the spare parts of the heavy duty hydraulic harrow.

This disc harrow is equipped with heavy-duty box frame specially designed for harrowing / land preparation of rough soil (Secondary finer operation).

Regular and satisfactory operation together with economic and long lasting use of the implement depends on the compliance with instructions given in this handbook.

Compliance with the instructions in this handbook is also important since manufacturer declines all and every responsibility for damage to persons or property caused by negligence and failure to comply with these instructions.

### 1.2 WARRANTY

When the machine is delivered, check that it has not been subjected to damage during transport and that the accessories are in a perfect condition and complete.

Any claims following the receipt of damaged goods shall be presented in writing within 8 days from the receipt of the goods.

The purchaser may only make the claims under warranty when he has complied with the warranty conditions in the supply contract.

### 1.3 WHEN THE WARRANTY BECOMES VOID

Besides the cases specified in the supply agreement, the warranty shall in any case become void.

1. When the implement has been used beyond the specified power limit like (Tractor horse power).
2. When repairs made by the customer without authorization from the manufacturer or owing to installation of spurious spare parts, the machine is subjected to variations and the damage can be ascribed to these variations.
3. When the user has failed to comply with the instructions in this handbook.
4. If the implement is used in very hard/stony soil no warranty of discs will be given.
5. No warranty will be given if the service and greasing is not done on time.

### 1.4 WARNING

1. Thoroughly read the instruction manual before proceeding with the various operations.
2. Maintain the harrow as per the instructions of this handbook to be entitled for warranty.

## 2. USAGE INSTRUCTIONS

### 2.1 BEFORE USE & ADJUSTMENTS

1. Before mounting of disc harrow make sure that all nuts & bolts are properly secured.
2. Also determine soil and trash conditions of the field and make the preliminary adjustments. e.g.

#### a) Disc gang angle adjustment

Gang angle (Angle between two gangs) ranges between 0° to 50°. The angle can be increased for better penetration in dry soil while it should be reduced to avoid clogging in wet soil.

#### b) Disc harrow leveling

To eliminate uneven penetration and side draft, leveling is done by means of drawbar adjustment. While tractor pulls to right the rear gang should be lowered a little. When the tractor pulls to the left the rear gang should be raised.

#### c) Scraper adjustment

The scraper can be adjusted by loosening the bolts at the scraper clamp.

#### d) Depth control

The depth at which the implement is required to work is controlled hydraulically by raising or lowering the control lever on the tractor.

#### e) Disc harrow penetration

Factors affecting disc harrow penetration are

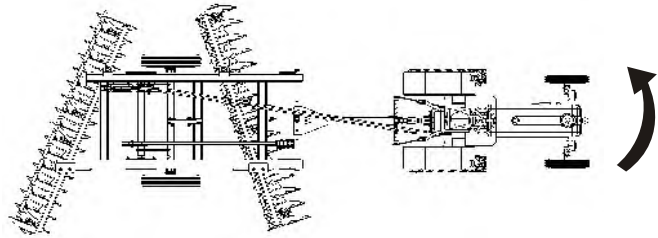
1. Angle of the gang
2. Weight of the harrow
3. Disc diameter
4. Disc sharpness
5. Blunt disc increases the draft considerably, check the disc sharpness
6. Angle of hitch

## 2.2 ATTACHING THE HARROW TO THE TRACTOR

1. Place the harrow duly leveled on the flat piece of land.
2. Reverse the tractor to the harrow (Do not drag the harrow up the tractor).
3. Attach tongue (Hook) of harrow securely to the towing tractor using drawbar pin.
4. Connect cleaned hydraulic couplers (Q.R.C value) of harrow to tractor.

### a) Maneuver direction

Never maneuver to the right hand side, because the angle formed by the disc angle, transmits great effort to the implement, overloading mainly the pulling components i.e. offset bar, drawbar etc.



## 2.3 WARNING FOR THE DRIVER

1. Before harrowing check all nuts & bolts of the disc harrow.
2. Be vigilant about the tree roots and stones. Don't harrow on stony soil.
3. Tractor should be in first high or fourth low gear.
4. Don't allow anyone to come across the harrow.
5. Before lifting the heavy duty hydraulic harrow check the hydraulic couplers (Q.R.C value) & pressure flow properly.
6. Lift the heavy duty hydraulic harrow with the help of hydraulic pressure before approaching the road.

## 1.4 SAFETY

Understanding the machine safety labels



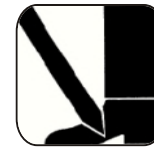
**Safety-Alert Symbol**

The machine safety labels shown in this section are placed in important areas on your machine to draw attention to potential safety hazards

On your machine the words DANGER, WARNING, and CAUTION are used with this safety-alert symbol. DANGER identifies the most serious hazards.

The operator's manual also explains any potential safety hazards whenever necessary.

- Before harrowing with disc harrow take care that nobody stands near it.



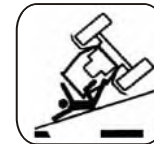
In order to protect yourself always wear adequate clothes and shoes during the operations.



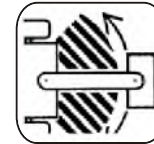
Never use your hands to check hydraulic leaks. Escaping hydraulic oil under pressure may have sufficient force to penetrate the skin causing injury.



Never allow riders on the tractor or implement unless an additional seat is available.



Be careful when moving around steep gradient to avoid sharp turn.



Never transport the implement on rough roads during the night. When operating, avoid sharp turns that may cause tractor colliding with the implement.

## 3. MAINTENANCE

### 3.1 MAINTENANCE INSTRUCTIONS

If you work the heavy duty hydraulic harrow on stony land then maintenance also increases.

1. If the soil has entered the grease nipple, then change the nipple.
2. If disc harrow is new after initial working of first two hours, tighten all nuts & bolts.
3. After every fifty hours grease all greasing points with grease gun and tighten all nuts & bolts.
4. After fifty hours, open the bearing hub/bearing spool of heavy duty hydraulic harrow & cleanse with diesel oil & pump in new grease.
5. Check hydraulic cylinder oil leakage occasionally.

### 3.2 STORAGE OF MACHINE AFTER WORK

1. Wash the heavy duty hydraulic harrow after work.
2. Replace the worn out nuts & bolts.
3. If heavy duty hydraulic harrow has to remain unused for long time then clean it & apply a layer of used oil for rust prevention.

These steps will enhance the life of your disc harrow.

### 3.3 LUBRICATION

1. Please take care that the high quality grease is used in the greasing points.
2. Please take care that the high quality hydraulic oil is used in the hydraulic cylinder.



Be careful with the environment. Do not spill combustible oil, battery and filter residues in the soil. These trashes in contact with the soil reach sub layer which directly damage the environment. Look for the information to recycle or re-use them.

### 3.4 INSTRUCTIONS FOR DRIVER

1. In case of scraper touching the discs, loosen the scraper bolt and readjust the scraper.
2. Never reverse the tractor when the harrow is engaged in the soil.
3. Never turn the tractor to the right or left when the harrow is engaged in the soil.
4. Properly fit the drawbar hook duly locked with lynch pin.
5. To get good results from the harrow, disc should be replaced when its diameter is reduced by 5" from its original size.
6. When heavy duty hydraulic harrow is ready for use don't stand between harrow & the tractor.

### 4. OPERATIONAL GUIDELINES FOR HARROW

1. Adding of wheel weights/water ballasting or combination of both is recommended when excessive rear wheel slippage is experienced.
2. Adjust internal /external check chains to obtain implement swing range within 50 mm (2") when raised.
3. Always maintain the correct tyre pressure to avoid wheel slippage.
4. Always set hydraulic levers correctly for draft and position control operation.

**The following settings are necessary to ensure that uniform working depth is maintained**

#### a.) Side Draft

The heavy duty hydraulic harrow will trail correctly behind the tractor provided the side thrust of the front gang is equal to that of rear. In case it is different there will be side draft. To set it correctly, the gang angle should be changed.

#### b.) Severe Side Draft

In case of severe side draft the cutting depth of rear disc gang should be increased or decreased.

#### Precautions during transportation

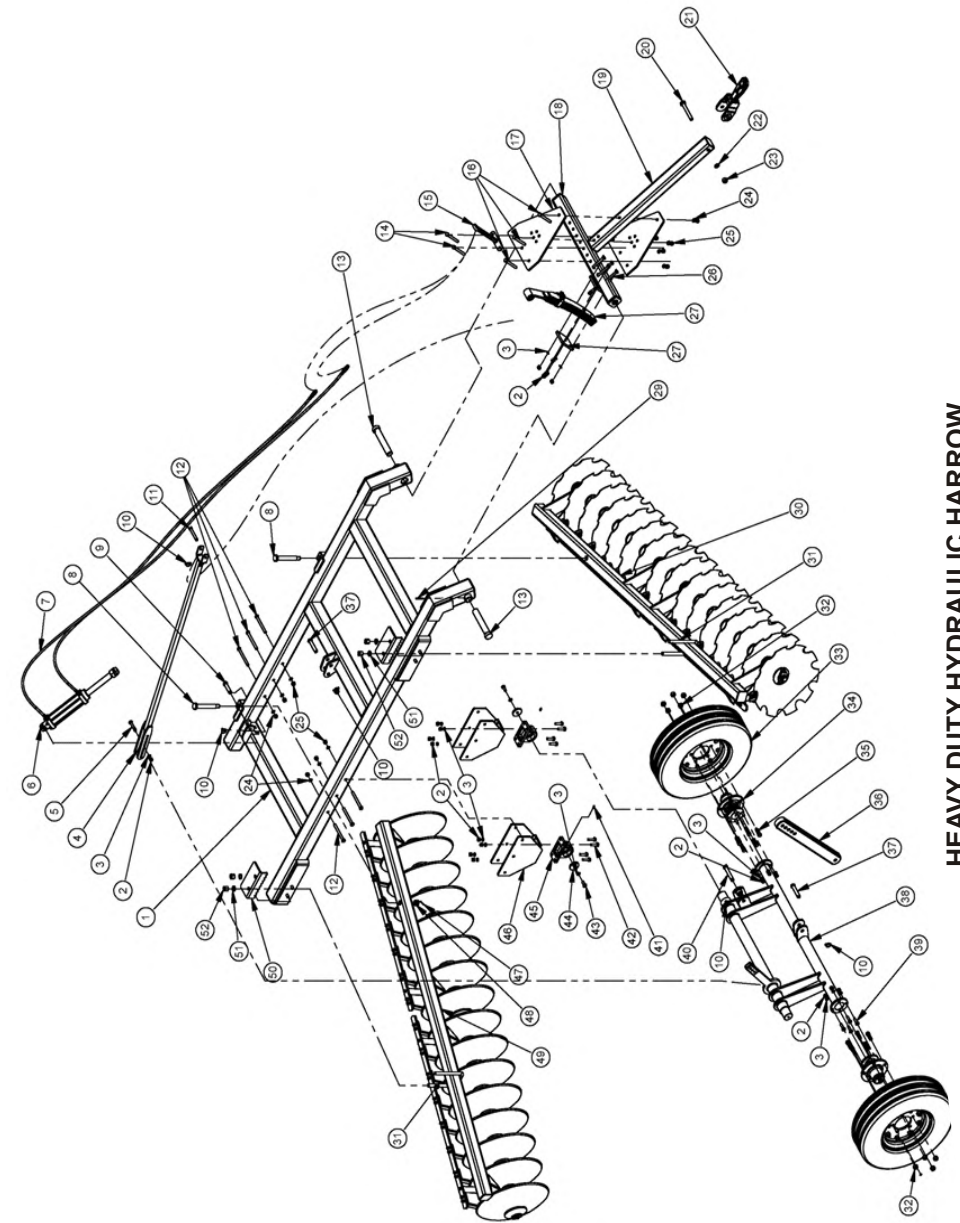
1. When transporting lift the harrow on tyres.
2. Set hydraulic levers in top raised position and lock levers.
3. Maintain the speed to avoid jumps.
4. Watch while over taking on road.
5. Always use SMV (Slow Moving Vehicles) symbols.



**Dear user!**  
**Respect the Ecology.**  
**Do not throw the trash away.**  
**This gesture helps to protect our Environment.**

## 5. TROUBLE SHOOTING CHART

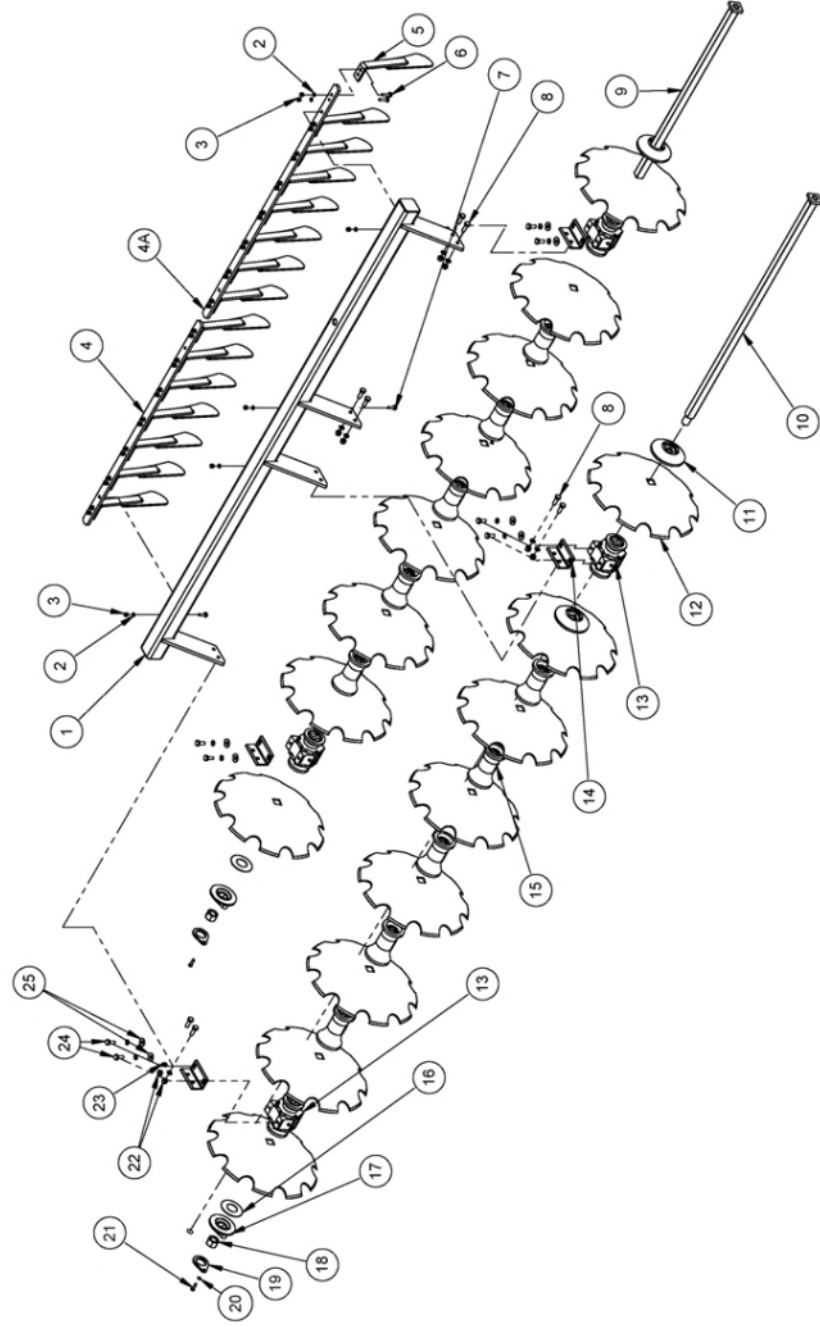
SR. NO.	POSSIBLE CAUSES	POSSIBLE REMEDIES
<b>A. Side Draft</b>		
1.	Disc not running level	Adjust using leveling lever
2.	Gangs improperly angled	Set the gangs
3.	Too much left hand offset.	By adjusting the drawbar plate bolt
<b>B. Excessive field slippage</b>		
1.	Tractor overloaded	Reduce angle, reduce depth.
2.	Not enough tractor ballast	Add wheel weight or liquid
<b>C. Not filling the furrow</b>		
1.	Too much left hand offset	By adjusting the drawbar
2.	Tractor wheel running in furrow enlarging it	Drive the tractor in unworked ground
3.	Disc too far from furrow	Keep the left front discs in furrow
4.	Rear gang set wrong, laterally.	By adjustment of gang box angle
<b>D. Poor penetration</b>		
1.	Hard ground	Increase angle between front and rear gang.
<b>E. Disc unsteady</b>		
1.	Too much angle in gang	Reduce the gang angle
<b>F. Gang clogging</b>		
1.	Field too wet.	Disc at shallow depth for first pass to speed up drying process.
2.	Gang set in maximum angle.	Reduce the angle
3.	Not using scrapers	Install scrapers.
4.	Scrapers worn out or not set properly.	Replace worn ones. Adjust scrapers close to the disc
5.	Disc is too deep in damp soil	Reduce penetration



HEAVY DUTY HYDRAULIC HARROW



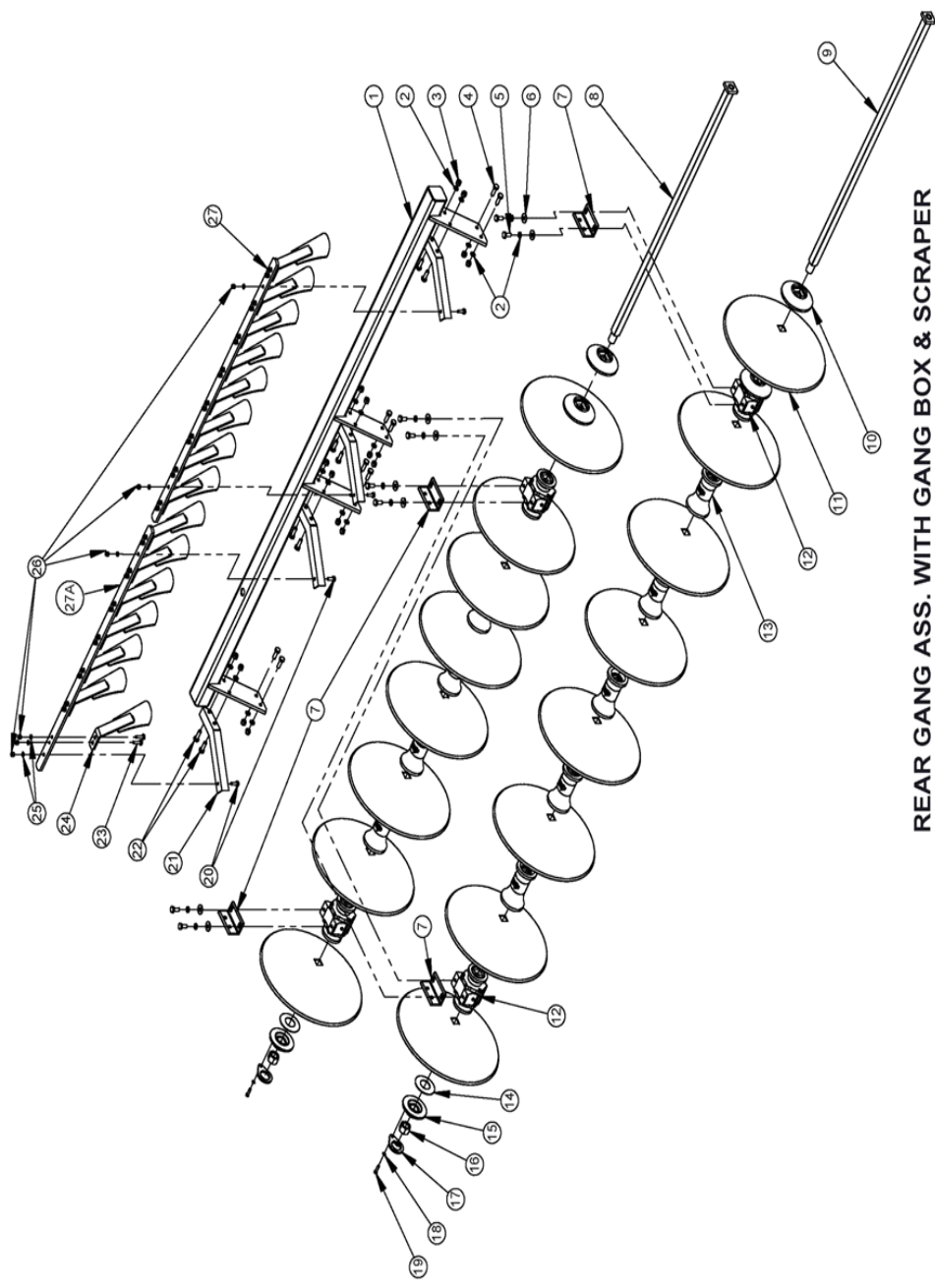
SR. NO.	DESCRIPTION	HEAVY DUTY HYDRAULIC HARROW											QTY.
		PART NO.											
		9x9	10x10	11x11	12x12	14x14	16X16	9x9	10x10	11x11	12x12	14x14	16X16
1	HYDRAULIC HARROW FRAME ASSY.	FKHH-525											
2	NYLOCK NUT M16X2P		10280005										14
3	SPRING WASHER 16MM		10270005										16
4	DEPTH ADJUSTMENT SO. ROD ASSY.		FKHH-509										1
5	HEX HEAD BOLT M16X16X2P		10280128										1
6	HYDRAULIC CYLINDER ASSY.		FKHH-509										1
7	HOSE PIPE ASSY.		FKHH-516										2
8	LOCKING PIN		10020081										2
9	PIN Ø25X100L		10020069										1
10	LINCH PIN 10MM		10020022										6
11	PIN Ø19X130L		10020087										1
12	HEX HEAD BOLT M18X180X2 5P		10280156										6
13	LINKAGE PIN Ø50X280L		10020053										2
14	HEX HEAD BOLT M18X170X2 5P		10280226										2
15	HOSE PIPE STAND ASS.		FKHH-515										3
16	HEX BOLT M18X160X2 5P		10280207										2
17	DRAWBAR JOINT PLATE		FKHH-072										2
18	CENTER LINK PIPE ASSY.		FKHH-502										1
19	DRAWBAR ASSY.		FKHH-503										1
20	HEX HEAD BOLT M24X180X3P		10280030										1
21	HOOK ASSY.		76070012										1
22	SPRING WASHER 24MM		10270027										1
23	NYLOCK NUT M24X3P		10280075										1
24	SPRING WASHER 18MM		10270006										11
25	NYLOCK NUT M18X2 5P		10280020										11
26	HEX HEAD BOLT M16X125X2P		10280072										4
27	LEAF SPRING ASSY.		FKHH-514										1
28	LEAF SPRING CLAMP PLATE		FKHH-016										1
29	SPRING PIN M10X75L		10020082										2
30	FRONT GANG ASS. WITH GANG BOX & SCRAPER		FKHH-543	FKHH-538	FKHH-534	FKHH-532	FKHH-522	FKHH-518					1
31	U-CLAMP Ø25X312.5X1142CD		10280025										2
32	PREVAILING TORQUE NUT 22MM (HUB NUT)		10280061										10
33	TYRE WITH RIM ASSY.		FKHH-517										2
34	TYRE HUB ASSY.		FKHH-508										2
35	HUB BOLT 22MMX11G 5/8X65L		10280227										10
36	TYRE SYSTEM LOCKING ASSY.		FKHH-552										1
37	PIN Ø25X125L		10020070										2
38	TYRE SYSTEM ASSY.		FKHH-528										1
39	HEX HEAD BOLT M16X55X2P		10280204										8
40	PIN Ø25X150L		10020088										1
41	GREASE NIPPLE 10x15L		10300005										2
42	HEX HEAD BOLT M16X65X2P		10280017										8
43	HEX BOLT M16X40X2P		10280120										2
44	CENTER SUPPORT HUB AXLE LOCK PLATE		FKHH-071										2
45	AXLE HUB		FKHH-070										2
46	AXLE HUB MOUNTING ASSY.		FKHH-506										2
47	SPLIT PIN Ø4X55L		10020054										2
48	CASTEL NUT M30X3 5P		10280019										2
49	REAR GANG ASS. WITH GANG BOX & SCRAPER		FKHH-539	FKHH-537	FKHH-533	FKHH-523	FKHH-519						1
50	BEND SHEET ANGLE		FKHH-073										2
51	SPRING WASHER 25MM		10270007										4
52	PLAIN NUT 25X8GX30L		10280060										4



FRONT GANG ASS. WITH GANG BOX & SCRAPER

**FRONT GANG ASS. WITH GANG BOX & SCRAPER**

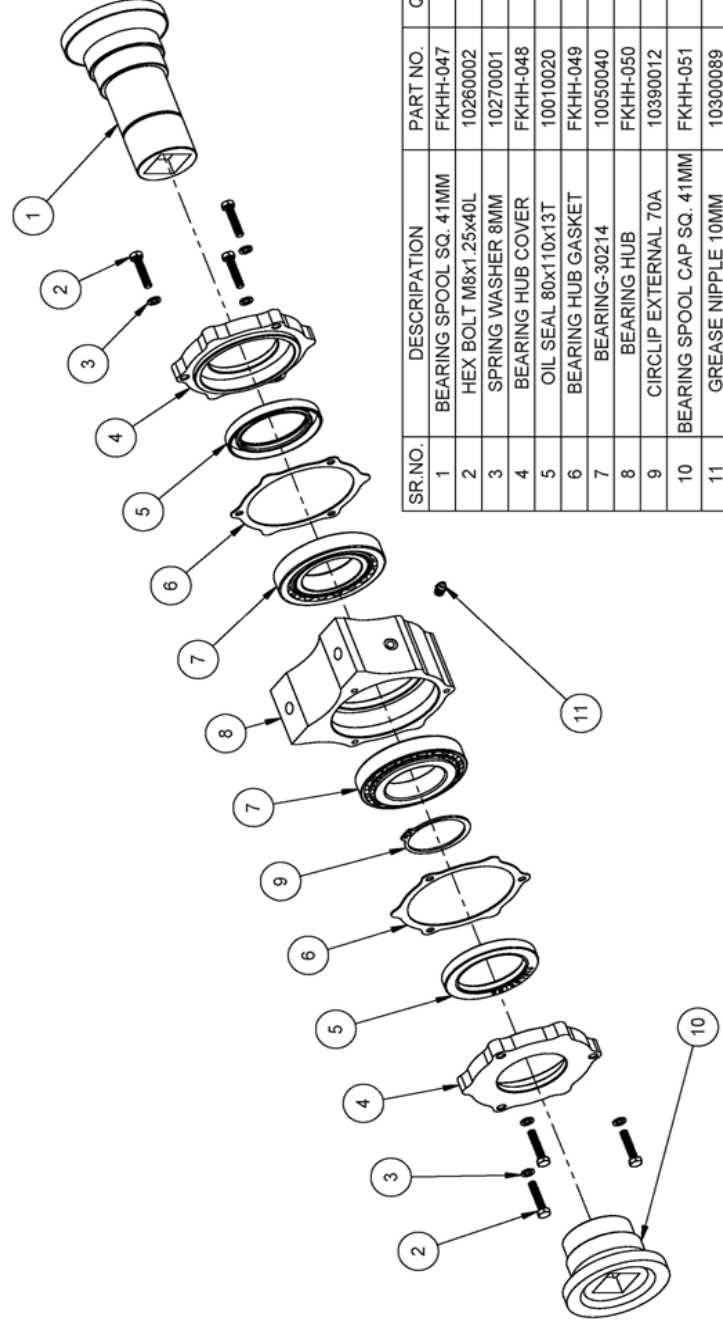
SR. NO.	DESCRIPTION	PART NO.							QTY.						
		9x9	10X10	11X11	12X12	14X14	16X16	9x9	10X10	11X11	12X12	14X14	16X16		
1	GANG BOX FRONT ASS.	FKHH-530	FKHH-535	FKHH-540	FKHH-520	FKHH-545	FKHH-504								
2	SPRING WASHER 12 MM		10270003							19	22	24	26	30	34
3	NYLOCK NUT M12X1.75P		10280025							19	22	24	26	30	34
4	SCRAPER HOLDING FLAT FRONT	FKHH-181	FKHH-183	FKHH-185	FKHH-204	FKHH-216	FKHH-080								
4A	SCRAPER HOLDING FLAT FRONT-1	*					FKHH-086			*					
5	SCRAPER FLAT ASS. FRONT		FKHH-512							8	9	10	11	13	15
6	HEX BOLT M 12x50x1.75P		10260064							16	18	20	22	26	30
7	HEX BOLT M 12x40x1.75P		10260008							3					4
8	HEX BOLT M 16x55x2P		10260204							6					8
9	SQ. AXLE ASS.	FKHH-524	FKHH-526	FKHH-524	FKHH-542	FKHH-511		1	2	1	2	2	2	2	
10		FKHH-527								1					
11	BIG CHAPPEN		FKHH-074							1					2
12	NOTCHED DISC-26" (SQ. HOLE-42MM)		FKHH-075							9	10	11	12	14	16
13	BEARING HUB ASS.		FKHH-510							3					4
14	HUB ANGLE		FKHH-079							3					4
15	PLAIN SPOOL 42 SQ. (9")		FKHH-077							5	4	5	6	8	10
16	DISC WASHER		FKUPMH-022							1					2
17	SMALL CHAPPEN		FKHH-078							1					2
18	PLAIN NUT 40X6G1 3/8 1 1/2 P(BSW THREAD)		10280050							1					2
19	GANG LOCK PLATE		FKHH-090							1					2
20	SPRING WASHER 10MM		10270002							1					2
21	HEH HEAD BOLT M10X35X1.5P		10260053							1					2
22	NYLOCK NUT M16X2P		10280005							6					8
23	SPRING WASHER 16MM		10270005							14					16
24	HEX BOLT M 16x40x2P		10260120							6					8
25	PLAIN WASHER 16 MM		10270020							6					8



**REAR GANG ASS. WITH GANG BOX & SCRAPER**

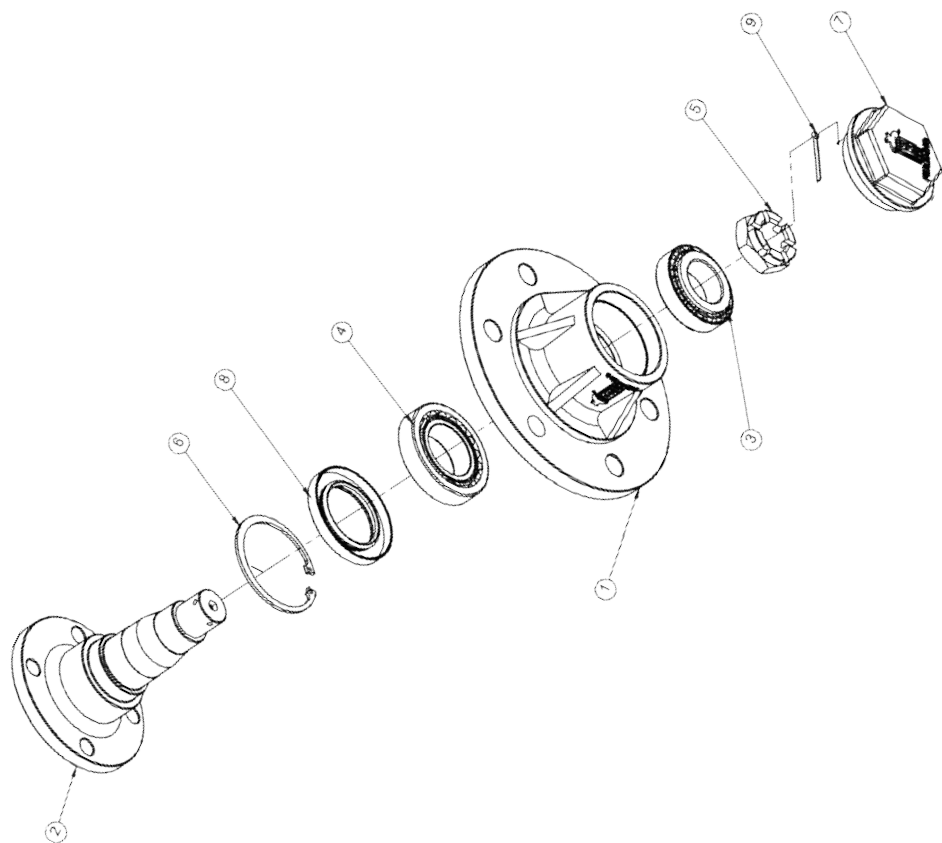
**REAR GANG ASS. WITH GANG BOX & SCRAPER**

SR. NO.	DESCRIPTION	PART NO.							QTY.					
		9X9	10X10	11X11	12X12	14X14	16X16	9X9	10X10	11X11	12X12	14X14	16X16	
1	GANG BOX REAR ASS.	FKHH-531	FKHH-535	FKHH-541	FKHH-521	FKHH-546	FKHH-505							
2	SPRING WASHER 16MM			10270005				22						24
3	NYLOCK NUT M16X2P			10280005				14						16
4	HEX BOLT M 16X55X2P			10280204				6						8
5	HEX BOLT M 16X40X2P			10280120				6						8
6	PLAIN WASHER 16 MM			10270020				6						8
7	HUB ANGLE			FKHH-079				3						4
8	SQ. AXLE ASS.	FKHH-527	FKHH-526	FKHH-524	FKHH-524	FKHH-542	FKHH-511	2	2	1	2	2	2	2
9				FKHH-526						1				
10	BIG CHAPPEN			FKHH-074										2
11	PLAIN DISC-26" (SQ. HOLE-42MM)			FKHH-076				9	10	11	12	14	16	16
12	BEARING HUB ASS.			FKHH-510				3						4
13	PLAIN SPOOL 42 SQ. (9")			FKHH-077				5	4	5	6	8	10	10
14	DISC WASHER			FKUPMH-022				1						2
15	SMALL CHAPPEN			FKHH-078				1						2
16	PLAIN NUT 40x6G1 3/8 1 1/2 P(BSW THREAD)			10280050				1						4
17	GANG LOCK PLATE			FKHH-090				1						2
18	SPRING WASHER 10MM			10270002				1						2
19	HEX HEAD BOLT M10X35X1.5P			10280053				1						2
20	HEX BOLT M 12X40X1.75P			10280008				3						4
21	REAR SCRAPER HOLDING BEND ANGLE			FKHH-082				3						4
22	HEX BOLT M 16X50X2P			10280078				3						8
23	HEX BOLT M 12X50X1.75P			10280064				16	18	20	22	26	30	30
24	SCRAPER FLAT ASS.REAR			FKHH-513				8	9	10	11	13	15	15
25	SPRING WASHER 12 MM			10270003				19	22	24	26	30	34	34
26	NYLOCK NUT M12X1.75P			10280025				19	22	24	26	30	34	34
27	SCRAPER HOLDING FLAT REAR			FKHH-081										1
27A	SCRAPER HOLDING FLAT REAR-1													1



SR.NO.	DESCRIPTION	PART NO.	QTY.
1	BEARING SPOOL SQ. 41MM	FKHH-047	1
2	HEX BOLT M8x1.25x40L	10260002	6
3	SPRING WASHER 8MM	10270001	6
4	BEARING HUB COVER	FKHH-048	2
5	OIL SEAL 80X110X13T	10010020	2
6	BEARING HUB GASKET	FKHH-049	2
7	BEARING-30214	10050040	2
8	BEARING HUB	FKHH-050	1
9	CIRCLIP EXTERNAL 70A	10390012	1
10	BEARING SPOOL CAP SQ. 41MM	FKHH-051	1
11	GREASE NIPPLE 10MM	10300089	1

**BEARING HUB ASSY.**



### TYRE BEARING HUB ASSEMBLY

S.NO.	PART NAME	PART NUMBER	QTY.
1	TYRE BEARING HUB	FKHH-041	1
2	TYRE AXLE SHAFT	FKHH-040	1
3	BEARING 32209	10050013	1
4	BEARING 32211	10050009	1
5	CASTLE NUT M36X2P	100280071	1
6	INTERNAL CIRCLIP B100 4 MM THK.	10390031	1
7	TYRE BEARING HUB CAP	FKHH-042	1
8	OIL SEAL 65X100X12	10010027	1
9	SPLIT PIN 4MMX55MM (L)	10020054	1

### DELIVERY CHECKLIST

Dealer Pre-Delivery (Please Tick)
<p><b>1. Dealer Pre-Delivery Checklist</b></p> <ol style="list-style-type: none"> <li>1. The customer or person responsible has been given the operator's manual.</li> <li>2. The customer undertakes to read the complete operator's manual and understands all aspects of the manual before operation of the machine.</li> <li>3. All safety, operational and maintenance information have been explained and demonstrated.</li> <li>4. All greasing and oil points, stickers, guarding and ID plate have been identified and physically pointed out.</li> <li>5. The customer agrees that it is his responsibility to read and carry out the safety, maintenance and operation as per this operator's manual.</li> </ol>

Customer Delivery (Please Tick)
<p><b>2. Customer Delivery Checklist</b></p> <ol style="list-style-type: none"> <li>1. The customer or person responsible has been given the operator's manual.</li> <li>2. The customer undertakes to read the complete operator's manual and understands all aspects of the manual before operation of the machine.</li> <li>3. All safety, operational and maintenance information have been explained and demonstrated.</li> <li>4. All greasing and oil points, stickers, guarding and ID plate have been identified and physically pointed out.</li> <li>5. The customer agrees that it is his responsibility to read and carry out the safety, maintenance and operation as per this operator's manual.</li> </ol>

Please Complete all Dealer information Below
<p><b>Dealer Information</b></p> <p>Dealer's Name.....</p> <p>Address.....</p> <p>State..... Postcode.....</p> <p>Phone..... Fax.....</p> <p>Email.....</p> <p>Service Person.....</p> <p>I confirm that the pre-delivery service was performed on this machine.</p> <p>Signature.....</p> <p>Date.....</p> <p>Comments.....</p>

Please Complete all Customer Information Below
<p><b>Customer Information</b></p> <p>Customer's Name.....</p> <p>Address.....</p> <p>State..... Postcode.....</p> <p>Phone..... Fax.....</p> <p>Email.....</p> <p>Delivery Person.....</p> <p>I confirm that all of the delivery checks were explained and performed.</p> <p>Signature.....</p> <p>Delivery Date.....</p> <p>Comments.....</p>



**WARRANTY CARD**  
**Customer Copy**

CUSTOMER NAME Mr./ Mrs :

ADDRESS :

MOBILE NO. :

Email :

NAME OF IMPLEMENT :

MODEL NO. :

YEAR OF Mfg. :

SERIAL NO. :

REGISTRATION NO. :

DATE OF PURCHASING :

NAME OF DEALER :

Customer's Signature

Dealer's Signature



**BERI UDYOG PVT LTD**

Corporate Office:

Plot No. 235 to 240, Sec-3, HSIIDC, Karnal- 132001 (Haryana), India

+91 184 2221571/ 72/ 73

info@fieldking.com, www.fieldking.com



**WARRANTY CARD**  
Company Copy

CUSTOMER NAME Mr./ Mrs :

ADDRESS :

MOBILE NO. :

Email :

NAME OF IMPLEMENT :

MODEL NO. :

YEAR OF Mfg. :

SERIAL NO. :

REGISTRATION NO. :

DATE OF PURCHASING :

NAME OF DEALER :

Customer's Signature

Dealer's Signature



**BERI UDYOG PVT LTD**

Corporate Office:

Plot No. 235 to 240, Sec-3, HSIIDC, Karnal- 132001 (Haryana), India

+91 184 2221571/ 72/ 73

info@fieldking.com, www.fieldking.com



**WARRANTY CARD**  
**Dealer Copy**

CUSTOMER NAME Mr./ Mrs :

ADDRESS :

MOBILE NO. :

Email :

NAME OF IMPLEMENT :

MODEL NO. :

YEAR OF Mfg. :

SERIAL NO. :

REGISTRATION NO. :

DATE OF PURCHASING :

NAME OF DEALER :

Customer's Signature

Dealer's Signature



**BERI UDYOG PVT LTD**

Corporate Office:

Plot No. 235 to 240, Sec-3, HSIIDC, Karnal- 132001 (Haryana), India

+91 184 2221571/ 72/ 73

info@fieldking.com, www.fieldking.com