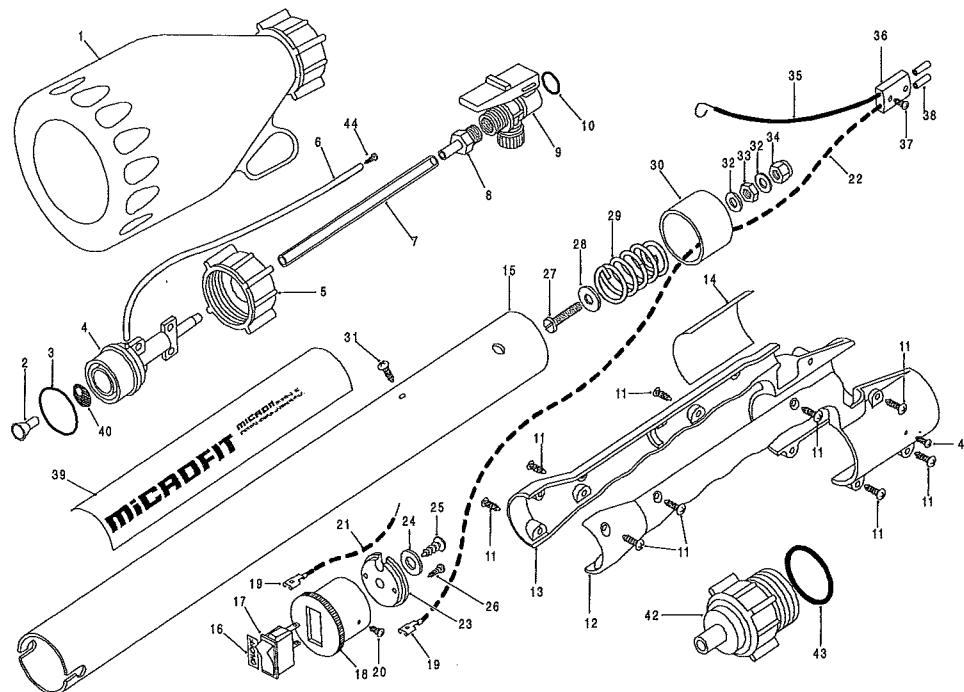


POWERPACK PARTS LIST/DIAGRAM



ITEM	PART NO.	DESCRIPTION	QTY.	ITEM	PART NO.	DESCRIPTION	QTY.
1	4390	BOTTLE, 2 1/4 LITRE + CAP	1	26	4939	SCREW, NO. 4 X 1/2" S/T (AB)	2
2	5063	AIR BLEED DEFLECTOR	1	27	4318	SCREW, 2 BA X 1" PANHEAD	1
3	5148	'O' RING	1	28	3168	WASHER, 1/4", FLAT	1
4	4904	BOTTLE HOLDER + FILTER (5037)	1	29	3070	BATTERY SPRING	1
5	4940A	BOTTLE SECURING CAP + 'O' RING (5148)	1	30	4315	CENTRE CONNECTOR	1
6	3374/40	TUBE 3/16 O.D., NYLON - 0.40M	1	31	3456	SCREW, NO. 6 X 1/4", S/T (B)	2
7	4309/14	TUBE, 5MM I.D. X 8MM O.D. PVC - 0.14M	1	32	4877	WASHER, 2 BA FLAT	2
8	4912A	CONNECTOR HOSE, 12 MM	1	33	3673	NUT, 2 BA	1
9	4917	VALVE C/W 'O' RING	1	34	4420	NUT, 2 BA, NYLOC	1
10	5057	'O' RING	1	35	4134/20	WIRE, 1.00 MM2, BLACK - 0.20M	1
11	4806	SCREW, NO. 6 X 5/8", PLASTITE	9	36	5095A	PLUG ELECTRICAL, RADIUSED/FLAT	1
12	4899L	HANDLE, LEFT HAND	1	37	5109	SCREW, 3 X 6 MM, PT	2
13	4899R	HANDLE, RIGHT HAND	1	38	5104	CONNECTOR SOCKET	2
14	4957	LABEL, BATTERY	1	39	5130	LABEL, MICROFIT	1
15	5108	BATTERY CASE, 0.445M	1	40	5037	FILTER	1
16	4958	LABEL, ON/OFF	1	41	5170	SCREW, NO. 4 X 3/16" S/T (B)	1
17	4918	SWITCH	1	<i>BACKPACK CONNECTOR KIT - Part No. 5087A, comprising of:</i>			
18	4906A	SWITCH END PIECE + SCREWS	1	42	5087	BACKPACK CONNECTOR,	
19	5050	TAG, 1/4" FLAG	2	43	5111	'O' RING	1
20	4758	SCREW NO. 4 X 5/16", S/T (AB)	2	44	4622	SCREW, NO. 6 X 1/4" S/T (B)	1
21	4368/8	WIRE, 1.00 MM2, RED - 0.08M	1	<i>OPTIONAL EXTRAS (not shown):</i>			
22	4368/62	WIRE, 1.00 MM2, RED - 0.61M	1	5404B	MICROPAK BACKPACK, 5 LITRE COMPLETE		
23	4905	SWITCH COVER	1	5207B	MICROPAK BACKPACK, 10 LITRE COMPLETE		
24	4954	WASHER, 1/4 X 1/2" BRASS	1	5505B	MICROPAK BACKPACK, 15 LITRE COMPLETE		
25	4802	SCREW, NO. 14 X 1/2" S/T (AB)	1	5107A	STRAP, SHOULDER COMPLETE		