

### 1.3.2 Hi-Flo Nozzle Assembly, Twin (ZU091E)

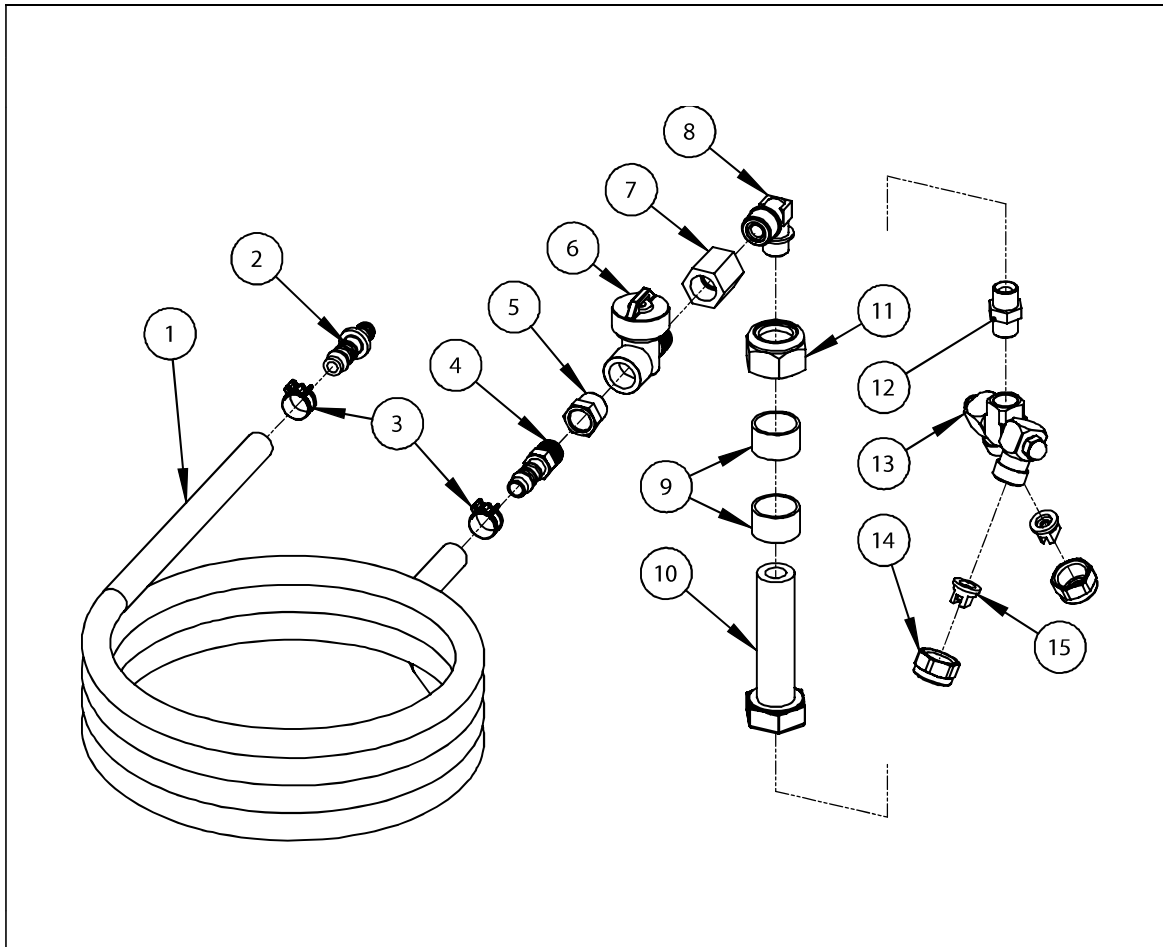


Figure 11 – Hi-Flo Nozzle Assembly, Twin

## Hi-Flo Nozzle Assembly, Twin - Parts List

ITEM	PART NO.	DESCRIPTION	QTY.
1	CL059	HOSE, PRESSURE, 10 MM X 4.5 M	1
2	AL032	HOSE CONNECTOR, PLUG, 10 MM	1
3	NH015	CLIP, COBRA	2
4	AL039	HOSE CONNECTOR, STRAIGHT, 10 MM X 1/4" MALE	1
5	BI007	BUSH, 3/8" X 1/4"	1
6	ZT002	VALVE, NON-DRIP	1
7	BI004	COUPLING, 3/8" FEMALE	1
8	AL020	REDUCING ELBOW, 3/8" X 1/4"	1
9	ZD001	SPACER	2
10	UF025S	BOLT, M20 X 75 DRILLED AND TAPPED 1/4" BSP	1
11	UF031	NUT, NYLOC, M20	1
12	BI009	NIPPLE, 1/4"	1
13	7450-2T	DOUBLE SWIVEL NOZZLE, TYPE 7450	1
14	CP1325	NOZZLE CAP, BRASS	2
15	XR11002-VK	NOZZLE TIP, CERAMIC, 02	2
	XR11003-VK	NOZZLE TIP, CERAMIC, 03	
	XR11004-VK	NOZZLE TIP, CERAMIC, 04	