

# REPAIR PARTS CATALOG



## TURFMAKER SEEDER SL8, -10, -12

### MODELS AVAILABLE

Pick-Up			Pull Type		
<b>SLP8</b>	8-ft. Pick-up	Notched Wheels			
<b>SSLP8</b>	8-ft. Pick-up	Smooth Wheels			
<b>SLP10</b>	10-ft. Pick-up	Notched Wheels	<b>SL10</b>	10-ft. Drawbar	Notched Wheels
<b>SSLP10</b>	10-ft. Pick-up	Smooth Wheels	<b>SSL10</b>	10-ft. Drawbar	Smooth Wheels
<b>SLP12</b>	12-ft. Pick-up	Notched Wheels	<b>SL12</b>	12-ft. Drawbar	Notched Wheels
			<b>SSL12</b>	12-ft. Drawbar	Smooth Wheels



Pull Type  
SL10

3 Point Pick Up  
SLP10

\* Cover illustration may show optional equipment not supplied with standard unit

### IMPORTANT

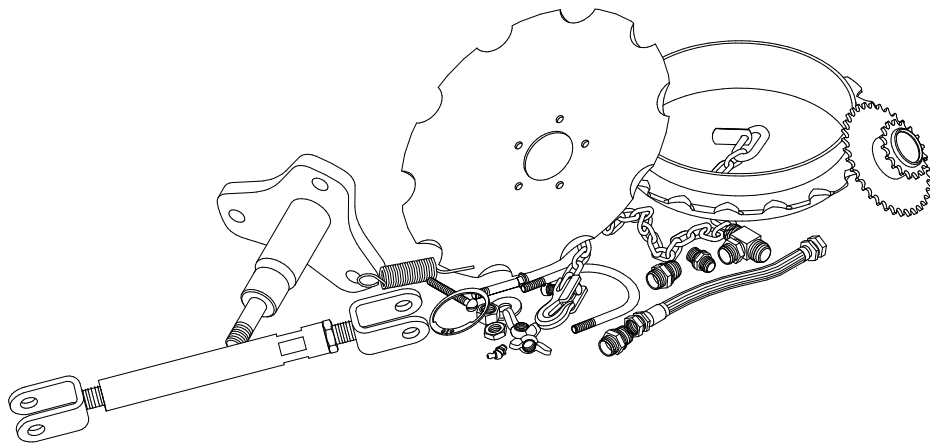
Repairs cannot be purchased retail direct from factory.  
Order through your Brillion Dealer.

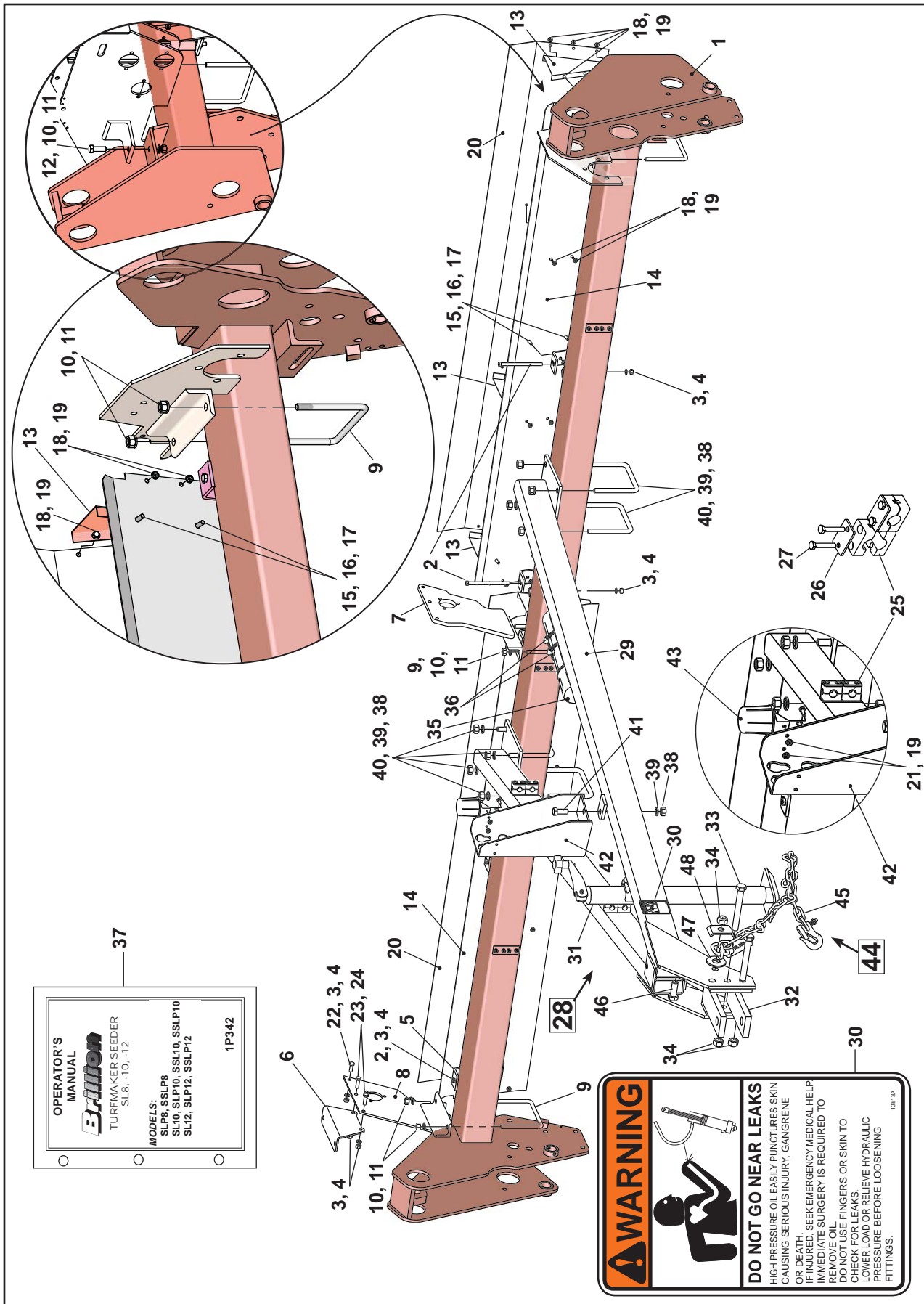


# Contents

---

Frame & Deflectors, 10 & 12 FT. PULL-TYPE Seeders .....	2, 3
Frame & Deflectors, 10 & 12 Ft. PICK-UP Seeders .....	4, 5
Frame & Deflectors, 8 Ft. PICK-UP Seeders .....	6, 7
Wheel Arm Assemblies.....	8, 9
Hydraulics.....	10, 11
Warning Light .....	12, 13
Roller Wheel Assemblies.....	14, 15
Transmission .....	16, 17
Transmission Case & Drive Chain.....	18, 19
Seedboxes .....	20, 23
Agitator Kit.....	24, 25
Scraper Kit.....	26
S-Tine Tire Track Remover Kit .....	27
Coil Tine Track Remover Kit.....	28, 29
Speed-Up Kit .....	28, 29
Electronic Acre Meter Kit .....	30, 31
Cylinder Components .....	32, 33
Index.....	34-38





**FRAME, DEFLECTORS, & MOUNTING (10' & 12' PULL-TYPE Seeders)**

Index Number	Part Number	Quantity		Description	Weight
		10'	12'		
1	2K456	1		FRAME, 12 FT	277.50
	9J311	1		FRAME, 10 FT	261.70
2	2K704	4	6	HHCS, 3/8-16 x 5-1/2, Gr2, ZP	0.19
3	1C183	12	14	WASHER, LOCK 3/8, ZP	0.01
4	1C277	12	14	NUT, HEX 3/8-16, ZP	0.02
5	9J405	4	6	DEFLECTOR BRACKET	1.65
6	9K823	1		ANGLE, LIGHT BRKT	2.19
7	9K328	1		BRACKET, CENTER WLD	12.53
8	2K939	1		SUPPORT, RH	10.13
9	4J918	3		U-BLT, 1/2-13 x 6-1/2 x 5-1/4, ZP	0.75
10	1C109	7		WASHER, LOCK 1/2, ZP	0.01
11	1C390	7		NUT, HEX 1/2-13, ZP	0.04
12	8C527	1		HHCS, 1/2-13 x 1-1/2, Gr5, ZP	0.13
13	9D767	6	8	END SHIELD	0.67
14	2K940	2		FRONT DEFLECTOR, 12 FT	15.66
	9J408	2		FRONT DEFLECTOR, 10 FT	12.79
15	7C858	8	12	HHCS, 5/16-18 x 3/4, Gr5, ZP	0.03
16	1C362	8	12	WASHER, LOCK 5/16, ZP	0.00
17	1C385	8	12	NUT, HEX 5/16-18, ZP	0.01
18	7J140	48	48	FHHCS, 1/4-20x1/2, Gr2, Serr, ZP	0.02
19	6J150	48	48	NUT, FLANGE LOCK 1/4-20, GrF, ZP	0.01
20	2K941	2		REAR DEFLECTOR, 12 FT	16.03
	9J409	2		REAR DEFLECTOR, 10 FT	13.00
21	1C229	2		HHCS, 1/4-20 x 3/4, Gr2, ZP	0.02
22	4C803	3		HHCS, 3/8-16 x 1, Gr5, ZP	0.05
23	9C078	2		HHCS, 3/8-16 x 1-1/4, Gr5, ZP	0.06
24	1C182	12		WASHER, FLT 3/8 STD, ZP	0.01
25	4K900	6		CLAMP PAIR, .67 DIA	0.47
26	4K903	6		TOP PLATE, CLAMP PR	0.06
27	1K204	12		HHCS, 1/4-20 x 1-1/2, Gr5, ZP	0.03
<b>28</b>	<b>9J458</b>	<b>1</b>		<b>DRAWBAR SUB-ASM (items 29-34)</b>	<b>213.53</b>
29	9J353	1		DRAWBAR	141.21
30	3K706	1		DECAL, HYDRAULIC LEAK	0.01
31	4J867	1		JACK	34.31
	6K458	1		REPLACEMENT PIN, 9/16" w/ CHAIN & SCREW	0.36
32	4K636	1		HITCH	15.23
33	6D300	2		HHCS, 3/4-10 x 6, Gr5, ZP	0.89
34	6C729	2		NUT, LOCK 3/4-10, GrB, ZP	0.13
35	8K349	1		CANISTER, MANUAL STORAGE 14"	0.60
36	8K350	1		HOSE CLAMP, #56 STAINLESS	0.09
37	1P342	1		OPERATOR'S MANUAL	0.10
38	1C392	9		NUT, HEX 5/8-11, ZP	0.07
39	1B166	9		WASHER, LOCK 5/8, ZP	0.03
40	7J990	4		U-BLT, 5/8-11 x 6-11/16 x 5-1/2, ZP	1.24
41	4D561	1		HHCS, 5/8-11 x 1-1/2, Gr5, ZP	0.21
42	8K885	1		HOSE HOLDER	11.19
43	8K664	1		HOLDER, 7-PIN AG CONNECTOR	0.20
<b>44</b>	<b>1K822</b>	<b>1</b>		<b>SAFETY CHAIN KIT, 10100# (items 46-49)</b>	<b>4.76</b>
45	1K731	1		SAFETY CHAIN, 10100#	3.29
46	1D424	1		HHCS, 3/4-10 x 2, Gr5, ZP	0.39
47	1C133	1		WASHER, FLT 3/4 STD, ZP	0.12
48	1K809	1		CLIP FOR SAFETY CHAIN	0.33

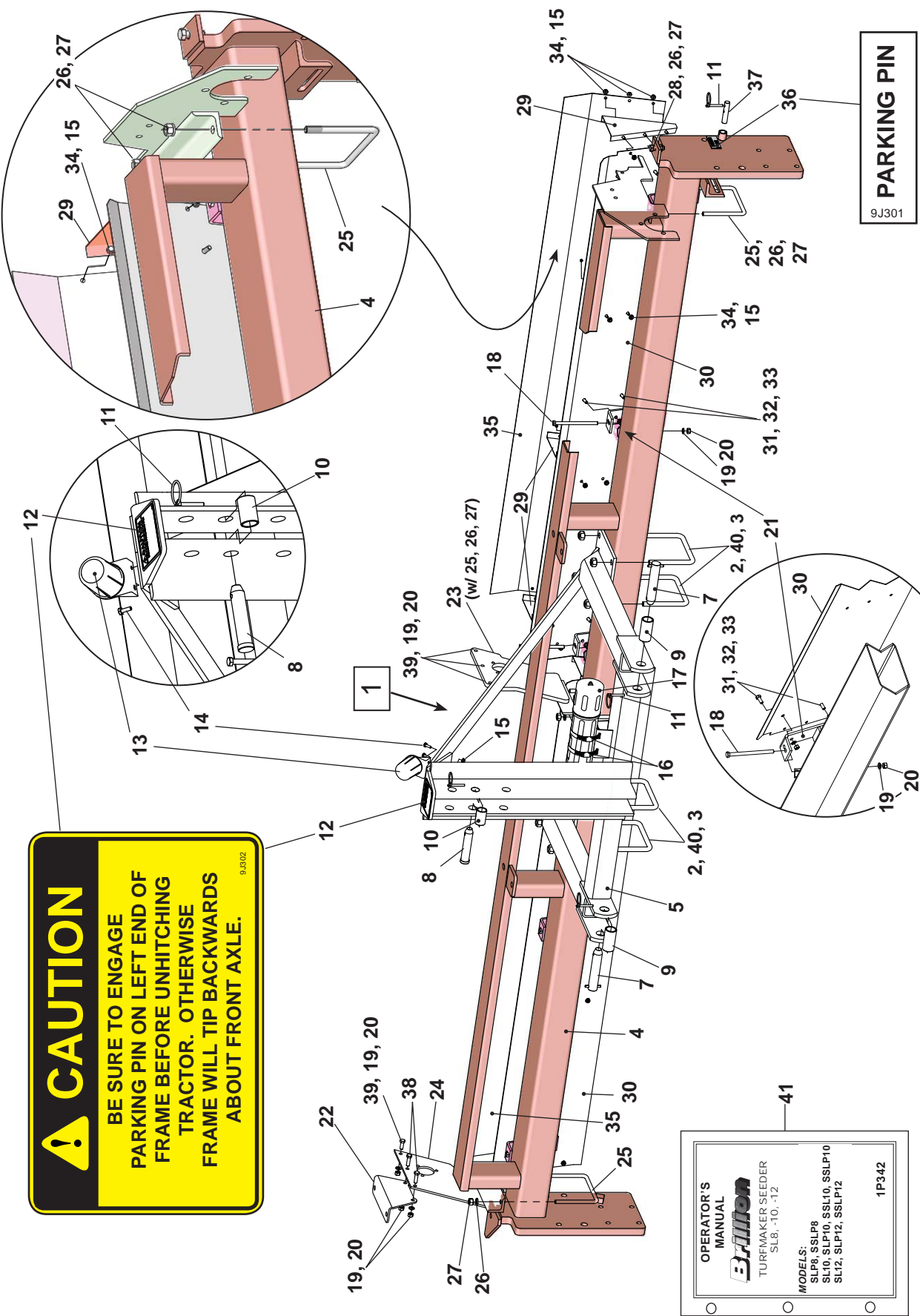
# CAUTION

BE SURE TO ENGAGE  
PARKING PIN ON LEFT END OF  
FRAME BEFORE UNHITCHING  
TRACTOR. OTHERWISE  
FRAME WILL TIP BACKWARDS  
ABOUT FRONT AXLE.

9J302

# PARKING PIN

9J301



OPERATOR'S  
MANUAL

**Baldor**  
TURFMAKER SEEDER  
SL8, -10, -12

MODELS:  
SLP8, SSLP8  
SL10, SLP10, SSL10, SSLP10  
SL12, SLP12, SSLP12

1P342

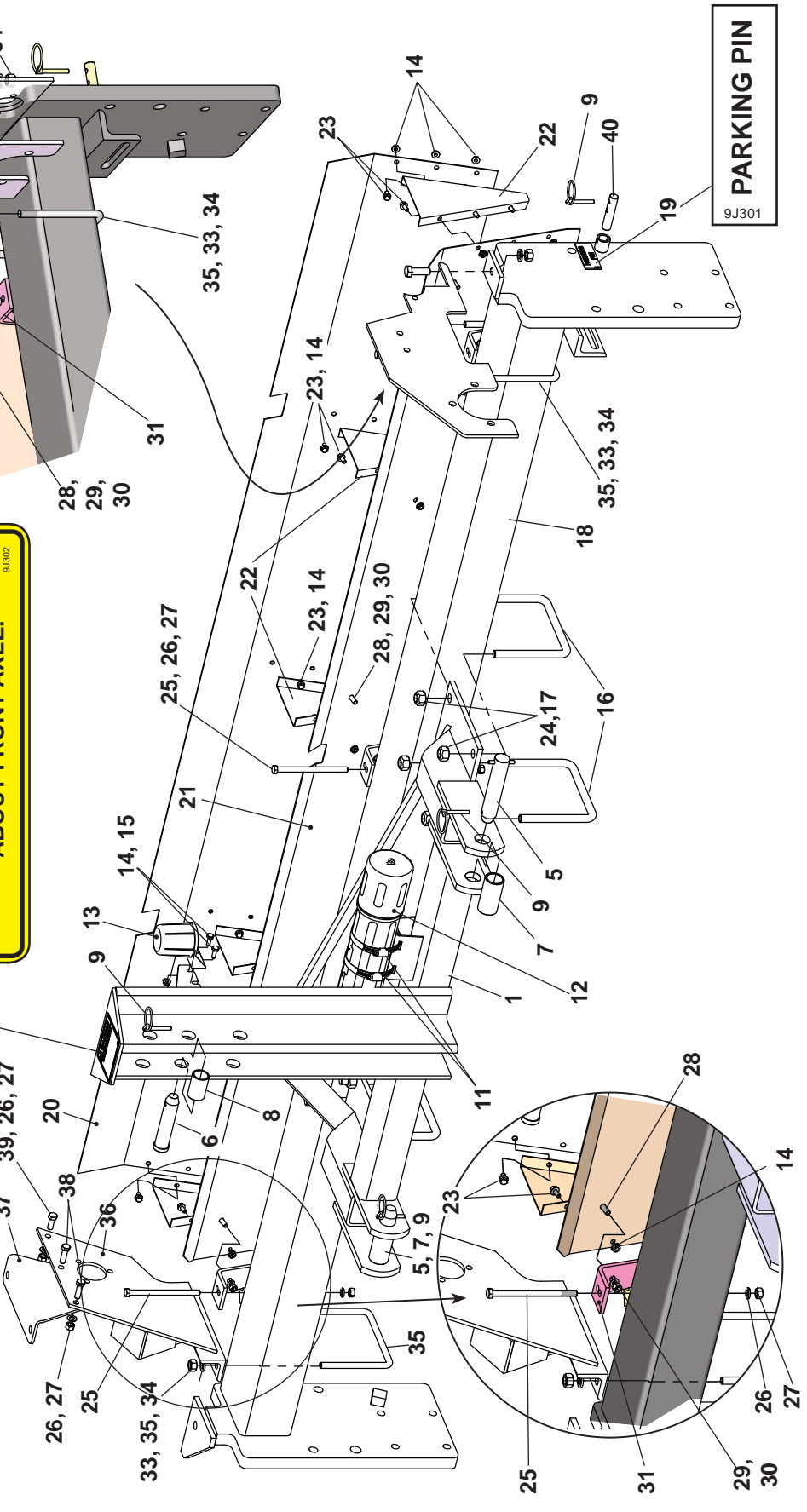


**FRAME, DEFLECTORS, & MOUNTING (10' & 12' PICK-UP Seeders)**

Index Number	Part Number	Quantity		Description	Weight
		10' <small>(If Variable w/ Model)</small>	12'		
1	9J464	1		3-POINT HITCH BUNDLE, LONG COUPLED (items 5 & 7-17)	166.21
	9J936	1		3-POINT HITCH BUNDLE, SHORT COUPLED (Optional - items 6-17)	
2	7J990	4		U-BLT,5/8-11 x 6-11/16 x 5-1/2,ZP	1.24
3	1C392	9		NUT,HEX 5/8-11,ZP	0.07
4	9K736	1		FRAME,3-POINT 12 FT	354.59
	6K646	1		FRAME,3-POINT 10 FT	
5	9J442	1		THREE POINT HITCH, LONG COUPLED (shown)	159.74
6	9J917	1		THREE POINT HITCH, SHORT COUPLED (Optional-not shown)	121.54
7	5D156	2		CLEVIS PIN	1.55
8	6D529	1		CLEVIS PIN,1.0 x 4.5	1.04
9	5D158	2		TUBE,RND 1.156 x 1.438 x 2.875	0.46
10	5D157	1		TUBE,RND 1.032 x 1.25 x 1.938	0.21
11	5D110	3		KLIK-PIN,1/4 x 1-3/4	0.05
12	9J302	1		DECAL,CAUTION	0.01
13	8K664	1		HOLDER,7-PIN AG CONNECTOR	0.20
14	1C229	2		HHCS,1/4-20 x 3/4,Gr2,ZP	0.02
15	6J150	2		NUT,FLANGE LOCK 1/4-20, GrF,ZP	0.01
16	8K350	2		HOSE CLAMP,#56 STAINLESS	0.09
17	8K349	1		CANISTER,MANUAL STORAGE 14"	0.60
18	2K704	4	6	HHCS,3/8-16 x 5-1/2,Gr2,ZP	0.19
19	1C183	8	12	WASHER,LOCK 3/8,ZP	0.01
20	1C277	8	12	NUT,HEX 3/8-16,ZP	0.02
21	9J405	4	6	DEFLECTOR BRACKET	1.65
22	9K823	1		ANGLE,LIGHT BRKT	2.19
23	9K328	1		BRACKET,CENTER WLD	12.53
24	2K939	1		SUPPORT,RH	10.13
25	4J918	3		U-BLT,1/2-13 x 6-1/2 x 5-1/4,ZP	0.75
26	1C109	7		WASHER,LOCK 1/2,ZP	0.01
27	1C390	7		NUT,HEX 1/2-13,ZP	0.04
28	8C527	1		HHCS,1/2-13 x 1-1/2,Gr5,ZP	0.13
29	9D767	8		END SHIELD	0.67
30	2K940	2		FRONT DEFLECTOR, 12 FT	15.66
	9J408	2		FRONT DEFLECTOR, 10 FT	12.79
31	7C858	8	12	HHCS,5/16-18 x 3/4,Gr5,ZP	0.03
32	1C362	8	12	WASHER,LOCK 5/16,ZP	0.00
33	1C385	8	12	NUT,HEX 5/16-18,ZP	0.01
34	7J140	48	48	FHHCS,1/4-20x1/2,Gr2,Serr,ZP	0.02
15	6J150	48	48	NUT,FLANGE LOCK 1/4-20, GrF,ZP	0.01
35	2K941	2		REAR DEFLECTOR, 12 FT	16.03
	9J409	2		REAR DEFLECTOR, 10 FT	13.00
36	9J301	1		DECAL, PARK PIN	0.01
37	6K649	1		PIN, 5/8 x 2-15/16 LONG	0.23
38	9C078	2		HHCS,3/8-16 x 1-1/4,Gr5,ZP	0.06
39	4C803	3		HHCS,3/8-16 x 1,Gr5,ZP	0.05
40	1B166	8		WASHER,LOCK 5/8,ZP	0.03
41	1P342	1		OPERATOR'S MANUAL	0.10

**CAUTION**  
 BE SURE TO ENGAGE  
 PARKING PIN ON LEFT END OF  
 FRAME BEFORE UNHITCHING  
 TRACTOR. OTHERWISE  
 FRAME WILL TIP BACKWARDS  
 ABOUT FRONT AXLE.

OPERATOR'S  
 MANUAL  
**Brillion**  
 TURFMAKER SEEDER  
 SL8, -10, -12  
 MODELS:  
 SLP8, SSLP8  
 SL10, SLP10, SSL10, SLP10  
 SL12, SLP12, SLP12  
 1P342





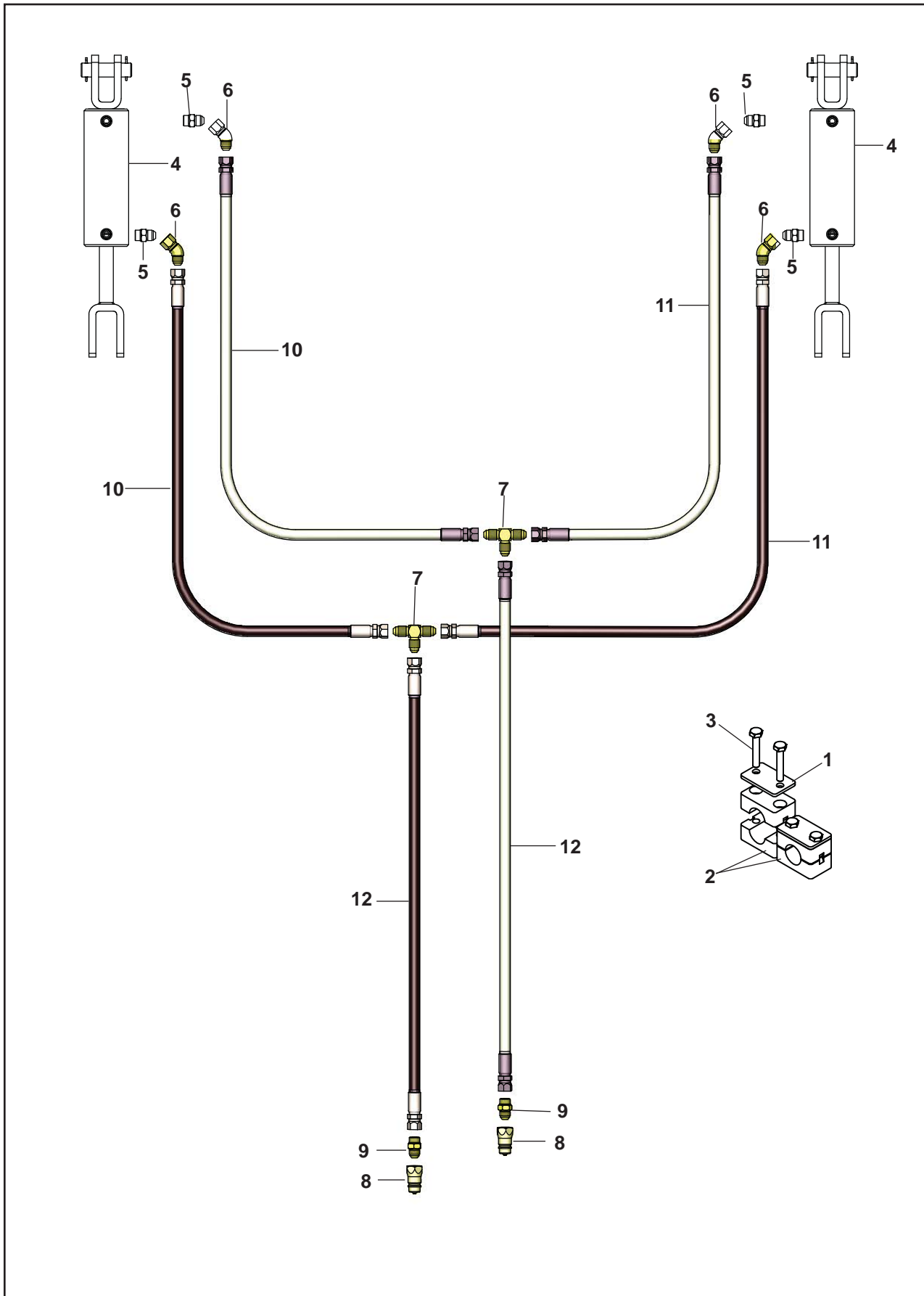
## FRAME, DEFLECTORS, & MOUNTING (8' PICK-UP Seeders)

Index Number	Part Number	Quantity	Description	Weight
1	9J936	1	3-POINT HITCH BUNDLE,SHORT COUPLED (shown)	128.01
2	9J917	1	THREE POINT HITCH	121.54
3	9J464	1	3-POINT HITCH BUNDLE, LONG COUPLED (Optional-not shown)	166.21
4	9J442	1	THREE POINT HITCH (Not shown)	159.74
5	5D156	2	CLEVIS PIN	1.55
6	6D529	1	CLEVIS PIN,1.0 x 4.5	1.04
7	5D158	2	TUBE,RND 1.156 x 1.438 x 2.875	0.46
8	5D157	1	TUBE,RND 1.032 x 1.25 x 1.938	0.21
9	5D110	4	KLIK-PIN,1/4 x 1-3/4	0.05
10	9J302	1	DECAL,CAUTION	0.00
11	8K350	2	HOSE CLAMP,#56 STAINLESS	0.09
12	8K349	1	CANISTER,MANUAL STORAGE 14"	0.60
13	8K664	1	HOLDER,7-PIN AG CONNECTOR	0.20
14	6J150	2	NUT,FLANGE LOCK 1/4-20, GrF,ZP	0.01
15	1C229	2	HHCS,1/4-20 x 3/4,Gr2,ZP	0.02
16	7J990	4	U-BLT,5/8-11 x 6-11/16 x 5-1/2,ZP	1.24
17	5C461	12	NUT,LOCK 5/8-11,GrB,ZP	0.07
18	6K647	1	FRAME,8 FT	197.98
19	9J301	1	DECAL, PARKING PIN	0.01
20	9J914	1	REAR DEFLECTOR	20.81
21	9J913	1	FRONT DEFLECTOR	20.43
22	9D767	5	END SHIELD	0.67
23	7J140	30	FHHCS,1/4-20x1/2,Gr2,Serr,ZP	0.02
24	1B166	8	WASHER,LOCK 5/8,ZP	0.03
25	2K704	3	HHCS,3/8-16 x 5-1/2,Gr2,ZP	0.19
26	1C183	6	WASHER,LOCK 3/8,ZP	0.01
27	1C277	6	NUT,HEX 3/8-16,ZP	0.02
28	7C858	6	HHCS,5/16-18 x 3/4,Gr5,ZP	0.03
29	1C362	6	WASHER,LOCK 5/16,ZP	0.00
30	1C385	6	NUT,HEX 5/16-18,ZP	0.01
31	9J405	3	DEFLECTOR BRACKET	1.65
32	8C527	1	HHCS,1/2-13 x 1-1/2,Gr5,ZP	0.13
33	1C109	5	WASHER,LOCK 1/2,ZP	0.01
34	1C390	5	NUT,HEX 1/2-13,ZP	0.04
35	4J918	2	U-BLT,1/2-13 x 6-1/2 x 5-1/4,ZP	0.75
36	9J909	1	SUPPORT,RH	10.13
37	9K823	1	ANGLE,LIGHT BRKT	2.19
38	9C078	2	HHCS,3/8-16 x 1,Gr5,ZP	0.06
39	4C803	3	HHCS,3/8-16 x 1-1/4,Gr5,ZP	0.05
40	6K649	1	PIN, 5/8 x 2-15/16 LONG	0.23
41	1P342	1	OPERATOR'S MANUAL	0.10



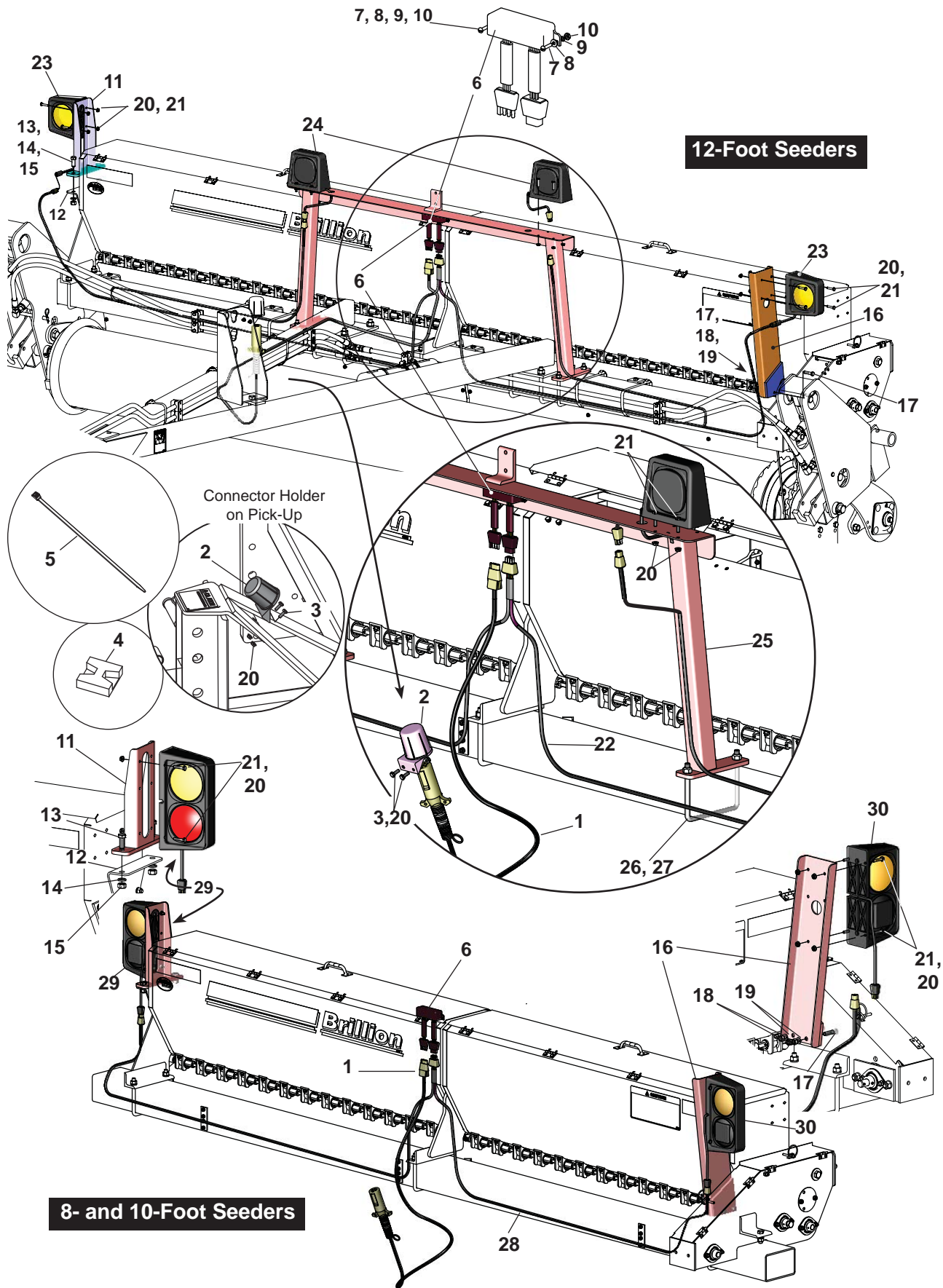
**TRANSPORT WHEELS (Drawbar Models)**

<b>Index Number</b>	<b>Part Number</b>	<b>Quantity</b>	<b>Description</b>	<b>Weight</b>
1	7J127	2	CYLINDER LOCK	4.18
2	2D799	2	CLEVIS PIN,1.0 x 3.0	0.08
3	1C788	2	COTTER PIN,3/16 x 1-1/2,ZP	0.01
4	9J437	2	CLEVIS PIN,0.5 x 6.0	0.34
5	6J448	2	HAIR PIN COTTER,1/8	0.00
6	9J324	1	WHEEL ARM ASM,LH	21.67
7	9J325	1	WHEEL ARM ASM,RH	21.67
8	9J400	2	PIN,1.25 x 7.313 H2	2.48
9	4C858	4	ROLL PIN,5/16 x 2,ZP	0.02
10	4J548	4	MACH BUSH,1.25 x 1.875 x 14Ga	0.03
11	5C100	10	WHL BLT,HEX 1/2-20 x 1,Gr5,ZP	0.12
12	9J440	2	HYD CYL,2-1/2 x 6	16.50
<b>13</b>	<b>9J331</b>	<b>2</b>	<b>HUB AND SPINDLE ASM (items 14-23)</b>	<b>14.60</b>
14	9J330	1	SPINDLE	5.31
15	1J390	1	WHEEL HUB W/LUBE FTG	8.59
16	1J463	1	HUB CAP	0.16
17	5C480	1	BRG CONE,TIMKEN LM48548	--
18	5C479	1	BRG CUP,TIMKEN LM48510	0.18
19	1D273	1	SEAL,SINGLE LIP	0.08
20	3C173	1	NUT,HEX SLOTTED 3/4-16,ZP	0.10
21	3C350	1	COTTER PIN,5/32 x 1,ZP	0.01
22	5C911	1	BRG CONE,TIMKEN LM11949	--
23	5C912	1	BRG CUP,TIMKEN LM11910	0.09
24	8C528	2	HHCS,1/2-13 x 3,Gr5,ZP	0.21
25	5C392	2	NUT,LOCK 1/2-13,GrB,ZP	0.04
<b>26</b>	<b>**6K911</b>	<b>2</b>	<b>WHEEL ASM,7.6-15 x 6PLY,5BLT (items 27-29)</b> <b>**[SEE NOTE]</b>	<b>54.39</b>
	6K926	2	<b>WHEEL ASM,9.5L-15 x 6PLY, 5BLT (items 27-29)</b>	53.5
27	**4C129	1	WHEEL,W/VALVE GUARD	18.11
	6J189	1	WHEEL,W/VALVE GUARD (optional)	28.78
28	8J792	1	VALVE STEM,TUBELESS	0.14
29	**8J789	1	TIRE,7.6x15-6PLY	36.13
	8J790	1	TIRE,9.5Lx15-6PLY (optional)	41.28
30	3C142	2	FITTING,GREASE 1/4 DRIVE	0.00
		**	used prior to 1 January 2008	



## HYDRAULIC SCHEMATIC

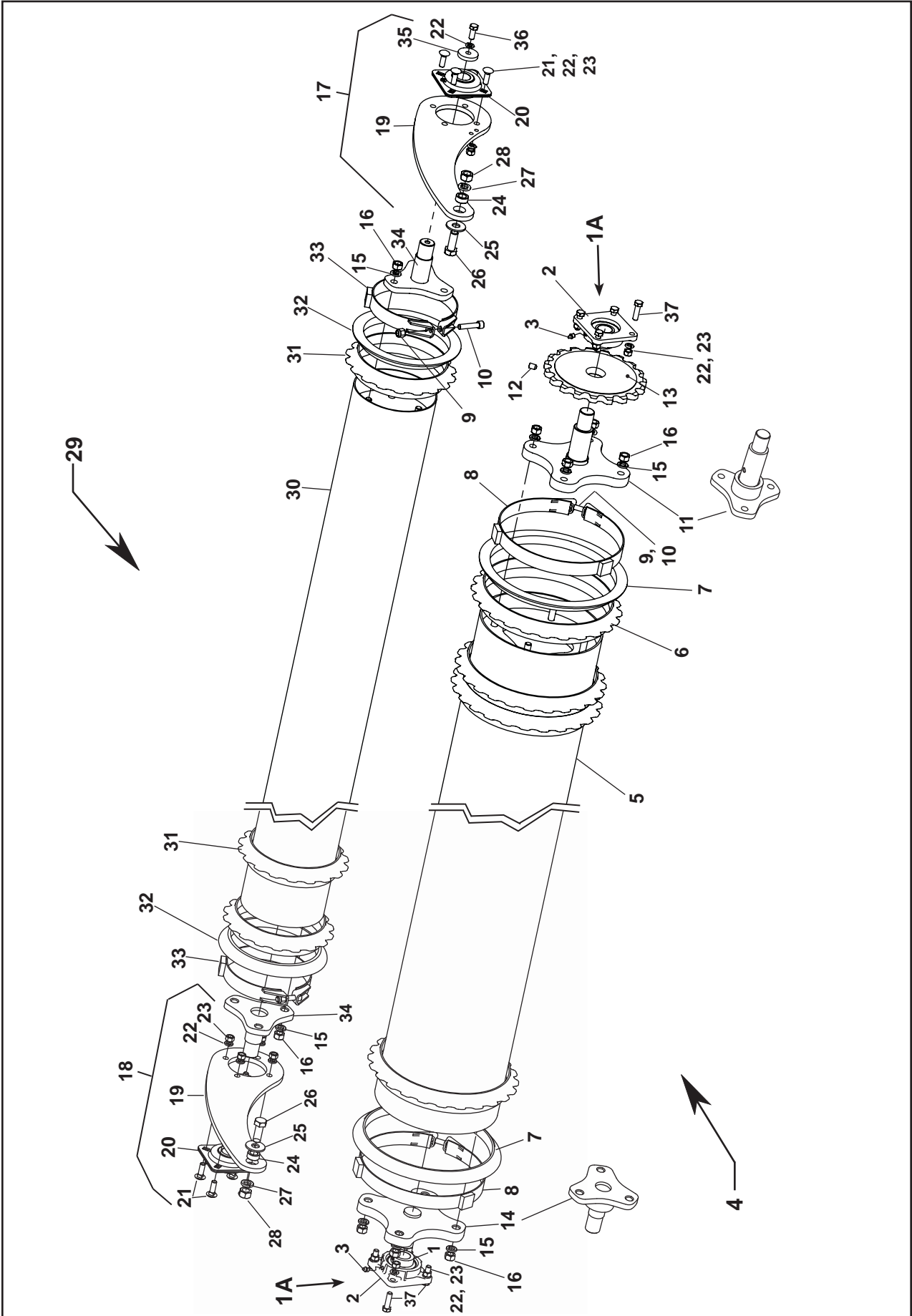
Index Number	Part Number	Quantity	Description	Weight
1	4K903	6	TOP PLATE	0.06
2	4K900	6	CLAMP PAIR	0.47
3	1K204	12	HHCS,1/4-20 x 1-1/2,Gr5,ZP	0.03
4	9J440	2	HYD CYL,2-1/2 x 6 DA	17.58
5	4K607	4	RESTRICTOR ADAPTER,	0.15
6	1P438	1	ELBOW,08MJ x 08FJS x 45°	0.19
	4K608	4	ELBOW,08FJS x 08MJ x 90° (not shown)	0.27
7	4K878	2	TEE,08MJ x 08MJ x 08MJ	0.32
8	4K912	2	MALE TRACTOR TIP	0.20
9	4K602	2	ADAPTER,08MJ x 08MOR	0.15
10	8K783	2	HYDRAULIC HOSE ASM., 72" (12' Machine)	1.82
	6K303	2	HYDRAULIC HOSE ASM., 57" (10' Machine)	1.40
	6K302	2	HYDRAULIC HOSE ASM., 42" (8' Machine)	1.20
11	4K888	2	HYDRAULIC HOSE ASM.,105" (12' Machine)	2.85
	4K614	2	HYDRAULIC HOSE ASM., 94" (10' Machine)	2.15
	4K887	2	HYDRAULIC HOSE ASM., 85" (8' Machine)	1.95
12	4K619	2	HYDRAULIC HOSE ASM., 134"	2.9





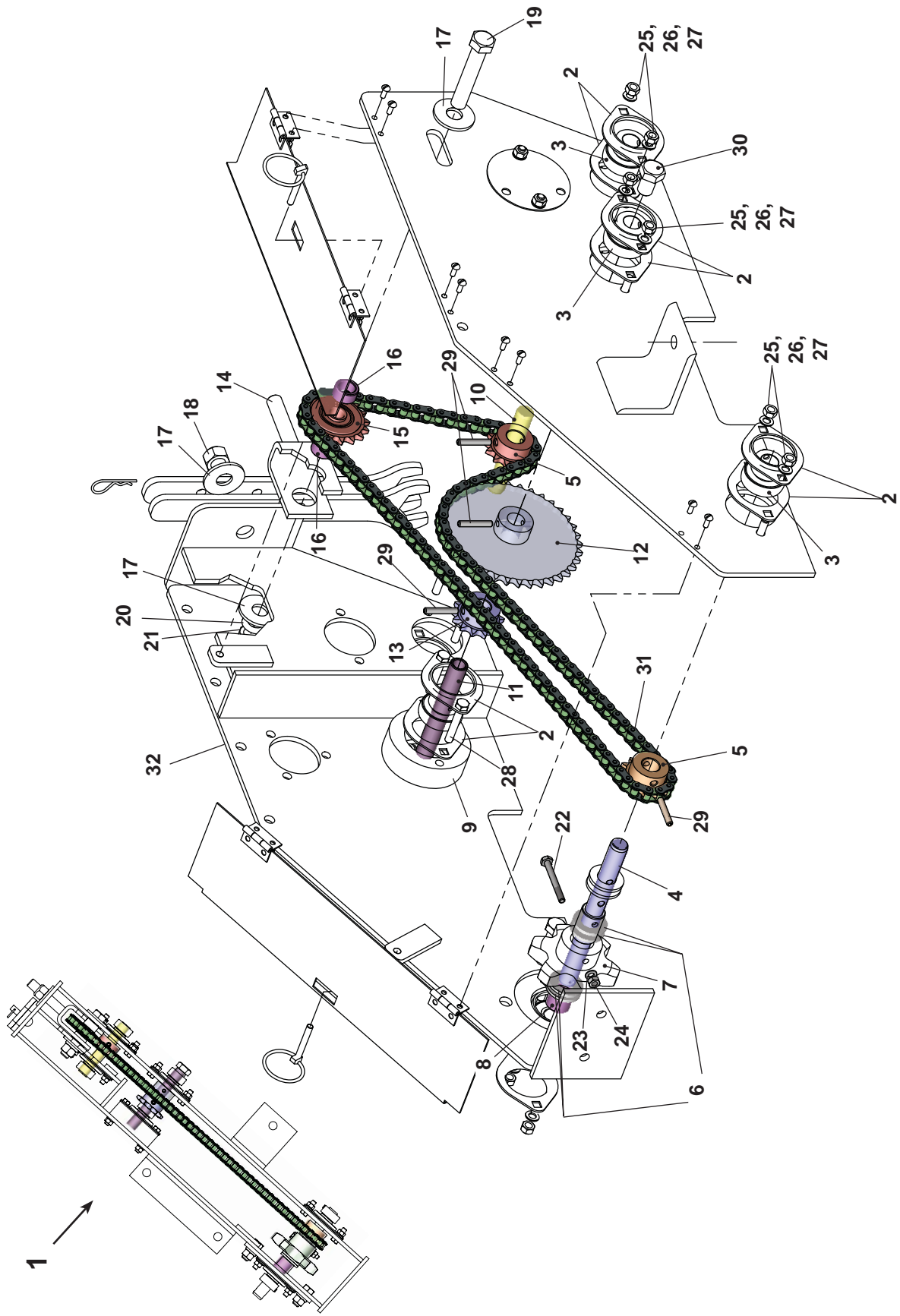
## WARNING LIGHTS-SURE STAND SEEDERS

Index Number	Part Number	Quantity			Description	Weight
1	9K784	1			AG HARNESS EXT 15'	3.23
2	8K664	1			HOLDER,7-PIN AG CONNECTOR	0.20
3	1C229	2			HHCS,1/4-20 x 3/4,Gr2,ZP	0.02
4	5K287	10			CABLE TIE MOUNTING BASE	0.01
5	5K288	10			CABLE TIE	0.20
6	8K661	1			AG LIGHT MODULE	0.57
7	9K750	2			RND HD,#8-32 x 3/4,ZP	0.00
8	5K263	2			WASHER,FLAT #8 SAE,ZP	0.00
9	5K264	2			WASHER,LOCK #8,ZP	0.00
10	5K265	2			NUT,HEX #8-32,ZP	0.00
11	9K822	1			BRACKET, LIGHT	3.78
12	9K743	1			BRACKET,LIGHT WLD (Part of Seeder Asm)	5.43
13	1C334	2			HHCS,1/2-13 x 1-1/4,Gr5,ZP	0.11
14	1C109	2			WASHER,LOCK 1/2,ZP	0.01
15	1C390	2			NUT,HEX 1/2-13,ZP	0.04
16	9K825	1			BRACKET,LIGHT WLD	7.10
17	4D904	2			HHCS,3/8-16 x 1-1/2,Gr5,ZP	0.07
18	1C277	2			NUT,HEX 3/8-16,ZP	0.02
19	1C183	2			WASHER,LOCK 3/8,ZP	0.01
		<b>8-ft</b>	<b>10-ft</b>	<b>12-ft</b>		
20	6J150	10	10	18	NUT,FLANGE LOCK 1/4-20, GrF,ZP	0.01
21	5K261	16	8	16	HHCS,1/4-20 x 1-1/4,Gr5,ZP	0.03
					<i>12-ft Light Kit Only</i>	
22	8K663			1	EXTENSION WISHBONE	2.50
23	8K659			2	SINGLE AG LIGHT,AMBER/AMBER	1.11
24	8K660			2	SINGLE AG LIGHT,RED/BLACK	1.11
25	9K817			1	BRACKET,LIGHT BAR WLD	27.67
26	4J918			2	UBOLT, 1/2-13 x 6-1/2 x 5-1/4	0.75
27	5J392			4	NUT, LOCK 1/2-13 GrB	0.04
					<i>8 &amp; 10-ft Light Kits Only</i>	
28	9K787	1	1		EXTENSION WISHBONE, DBL LIGHT	2.5
29	9K731	1	1		DUAL LAMP,W/BRAKE LH (used RH side of machine)	2.01
30	9K732	1	1		DUAL LAMP,W/BRAKE RH (used LH side of machine)	2.01



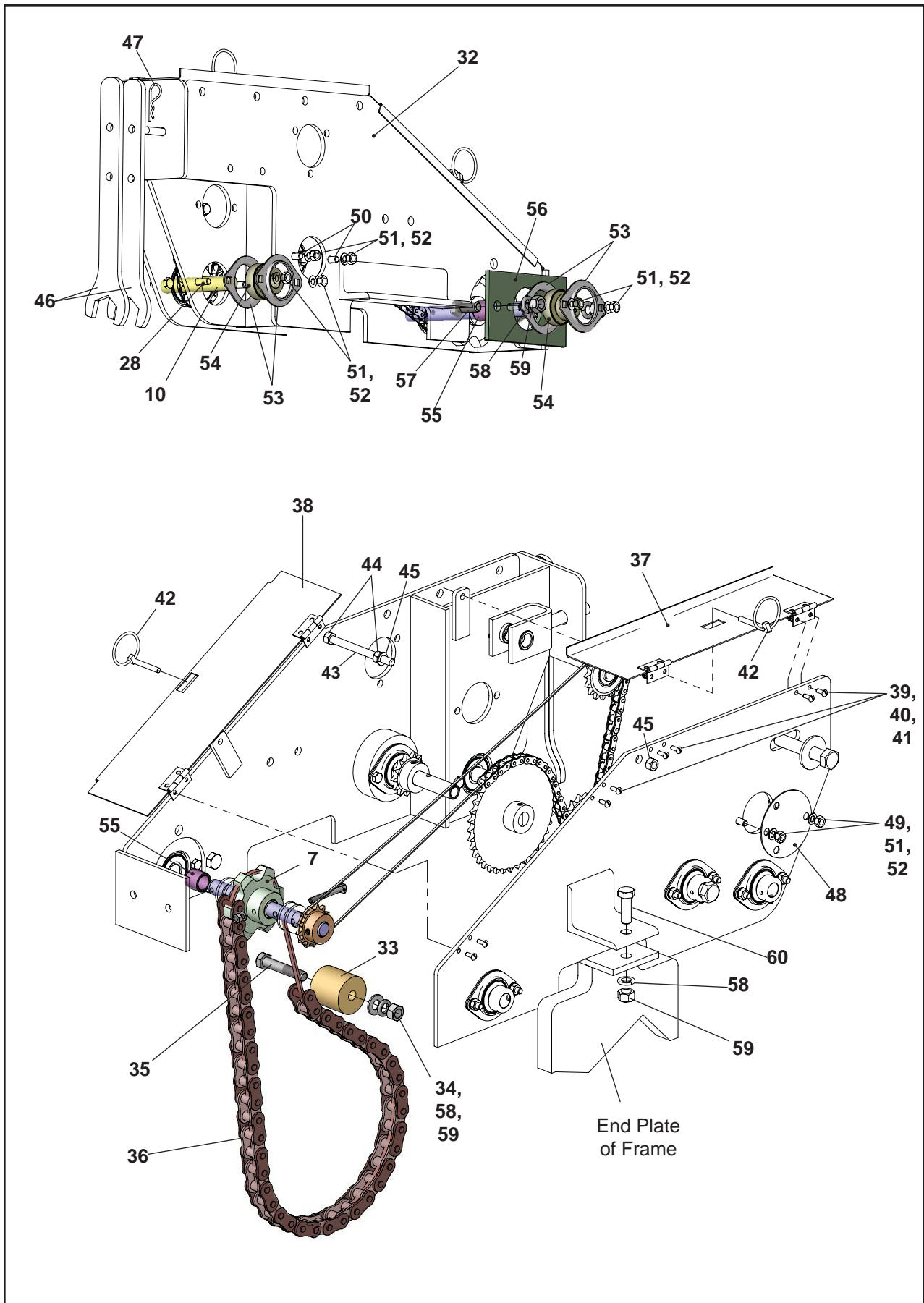
## WHEEL & AXLE ASSEMBLIES

Index	Part	Quantity		
Number	Number	12' /10' /8'	Description	Weight
1	4D645	2	BRG ASM,1-1/2 FLANGE 4BLT (items 1-3)	5.89
	9D903	2	BRG,1-1/2	2.12
2	9D904	2	HOUSING,FLANGE BRG 4BLT	3.93
3	9D923	2	FITTING,GREASE 1/8PTF x 11/16	0.00
4	9K270	1	FRONT ROLLER ASM,12 FT 4-bolt (incl. items 5-8)	998.00
	2K461	1	FRONT ROLLER ASM,12 FT 3-bolt (incl. items 5-8)	970.00
	9K271	1	FRONT ROLLER ASM,10 FT 4-bolt (incl. items 5-8)	828.80
	9J349	1	FRONT ROLLER ASM,10 FT 3-bolt (incl. items 5-8)	794.00
	9K272	1	FRONT ROLLER ASM,8 FT 4-bolt (incl. items 5-8)	676.00
5	9J898	1	FRONT ROLLER ASM,8 FT 3-bolt (incl. items 5-8)	649.00
	9K260	1	DRUM,12' WLD, 4 BLT	312.00
	2K454	1	PIPE & PLATE ASM,12 FT 3BLT	313.33
	9K261	1	DRUM,10' WLD, 4 BLT	262.38
	9J350	1	PIPE & PLATE ASM,10FT, 3BLT	263.59
	9K262	1	DRUM,8' WLD, 4 BLT	218.00
6	9J896	1	PIPE & PLATE ASM,8FT 3BLT	219.32
	4C688	61 / 50 / 40	SAND WHEEL (12-3/4 PIPE)	10.86
7	1C968	2	HALF WHEEL	8.30
8	2C802	2	CLAMP BAND ASM 12" (incl. items 9, 10)	3.30
9	2C112	4	NUT,NY-LOK HEAVY 1/2-13,ZP	0.06
10	4C144	4	SHCS,1/2-13 x 2-1/4	0.18
11	9K269	1	STUB SHAFT ASM,LH 4 BLT	24.33
	9J347	1	STUB SHAFT ASM, LH 3 BLT (used prior to 4-bolt)	9.28
12	3C947	1	SET SCREW, 1/2-13 X 3/4	0.00
13	9J901	1	AXLE SPROCKET, 19 TOOTH	16.31
14	9K265	1	STUB SHAFT,4 BLT RH	18.69
	9J351	1	STUB SHAFT, 3 BLT RH (used prior to 4-bolt)	9.28
15	1B166	14	WASHER,LOCK 5/8,ZP	0.03
16	1C392	14	NUT,HEX 5/8-11,ZP	0.07
17	2K480	1	REAR ARM ASM,LH (includes items 19-23)	19.99
18	2K481	1	REAR ARM ASM,RH (includes items 19-23)	19.99
19	2K522	2	REAR ARM	14.48
20	2K316	2	BEARING ASM, 1-1/2	4.80
21	9J559	8	CB,1/2-13 x 1-1/2,Gr5,ZP	0.13
22	1C109	18	WASHER,LOCK 1/2,ZP	0.01
23	1C390	16	NUT,HEX 1/2-13,ZP	0.04
24	9J399	2	BUSHING	0.12
25	1C133	2	WASHER,FLAT 3/4 STD,ZP	0.12
26	1D424	2	HHCS,3/4-10 x 2,Gr5,ZP (Pull type)	0.39
	6D742	2	HHCS, 3/4-10 x 3, GR 5 ZP (3-Pt)	0.52
27	1C211	2	WASHER,LOCK 3/4,ZP	0.04
28	1C210	2	NUT,HEX 3/4-10,ZP	0.12
29	2K460	1	12 FT. REAR ROLLER ASSEMBLY	620.00
	9J336	1	10 FT REAR ROLLER ASSEMBLY	539.09
	9J897	1	8 FT REAR ROLLER ASSEMBLY	--
30	2K455	1	PIPE & PLATE ASM, 12 Ft.	--
	9J337	1	PIPE & PLATE ASM, 10 Ft.	127.57
	9J895	1	PIPE & PLATE ASM, 8 Ft.	--
31	4C689	62 / 52 / 41	SAND WHEEL (8-5/8 PIPE)	7.59
32	2C524	2	HALF WHEEL	5.85
33	2C801	2	CLAMP BAND ASM (incl. 9, 10)	2.61
34	2K475	2	STUB SHAFT	7.17
35	9J338	2	WASHER,1/2 x 2-1/16 x 3/8,ZP	0.33
36	1D442	2	HHCS,1/2-20 x 1-1/4,Gr5,ZP	0.11
37	5D051	8	HHCS,1/2-13 x 1-3/4,Gr5,ZP (Pull type)	0.14
	1J486	8	HHCS, 1/2-13 x 2 1/4, GR 5, ZP (3 Pt)	0.17



### TRANSMISSION - SPROCKETS & CHAIN (cont'd)

Index Number	Part Number	Quantity	Description	Weight
1	9J908	1	<b>TRANSMISSION ASSEMBLY</b>	<b>64.33</b>
2	2K503	12	FLANGETTE HALF,2 BLT	0.10
3	1D598	6	BRG,3/4 BORE W/COLLAR	0.48
4	9J385	1	INPUT SHAFT	0.95
5	9D772	2	SPROCKET,#40B13x3/4 BORE	0.44
6	2C458	4	WASHER,FLT 3/4 SAE,ZP	0.05
7	9J903	1	6 TOOTH INPUT SPROCKET	1.94
8	7J422	1	TUBE,RND 0.76 x 1.0 x 0.875	0.08
9	2K538	1	SPACER	1.81
10	9J388	1	SHAFT,0.75 x 4.5 H1	0.55
11	6K516	1	DRIVE TUBE	0.32
12	9J377	1	SPROCKET,#40B37x3/4 BORE	0.44
13	1K192	1	SPROCKET,13T MACHINED	0.39
14	9J379	1	YOKE	1.14
15	9J378	1	IDLER SPROCKET,#40x17x5/8	0.55
16	9J391	2	TUBE,RND 0.688 x 1.0 x 0.531	0.06
17	1C122	3	WASHER,FLT 5/8 STD,ZP	0.08
18	5C461	1	NUT,LOCK 5/8-11,GrB,ZP	0.07
19	4J082	1	HHCS,5/8-11 x 3-1/2,Gr5,ZP	0.39
20	1B166	1	WASHER,LOCK 5/8,ZP	0.03
21	1C392	1	NUT,HEX 5/8-11,ZP	0.07
22	9J907	1	HHCS,1/4-20 x 2-1/4,Gr5,ZP	0.04
23	1C354	1	WASHER,LOCK 1/4,ZP	0.00
24	1C355	1	NUT,HEX 1/4-20,ZP	0.01
25	6D037	12	HHCS,5/16-18 x 1,Gr5,ZP	0.04
26	1C362	12	WASHER,LOCK 5/16,ZP	0.00
27	1C385	12	NUT,HEX 5/16-18,ZP	0.01
28	1C499	2	HHCS,5/16-18 x 2,Gr5,ZP	0.06
29	1C659	4	ROLL PIN,1/4 x 1-1/2	0.01
30	6C098	1	HHCS,5/8-11 x 1,Gr2,ZP	0.17
31	9J906	1	CHAIN ASM	0.13
32	9J367	1	TRANSMISSION CASE	45.50
			continued on next page	





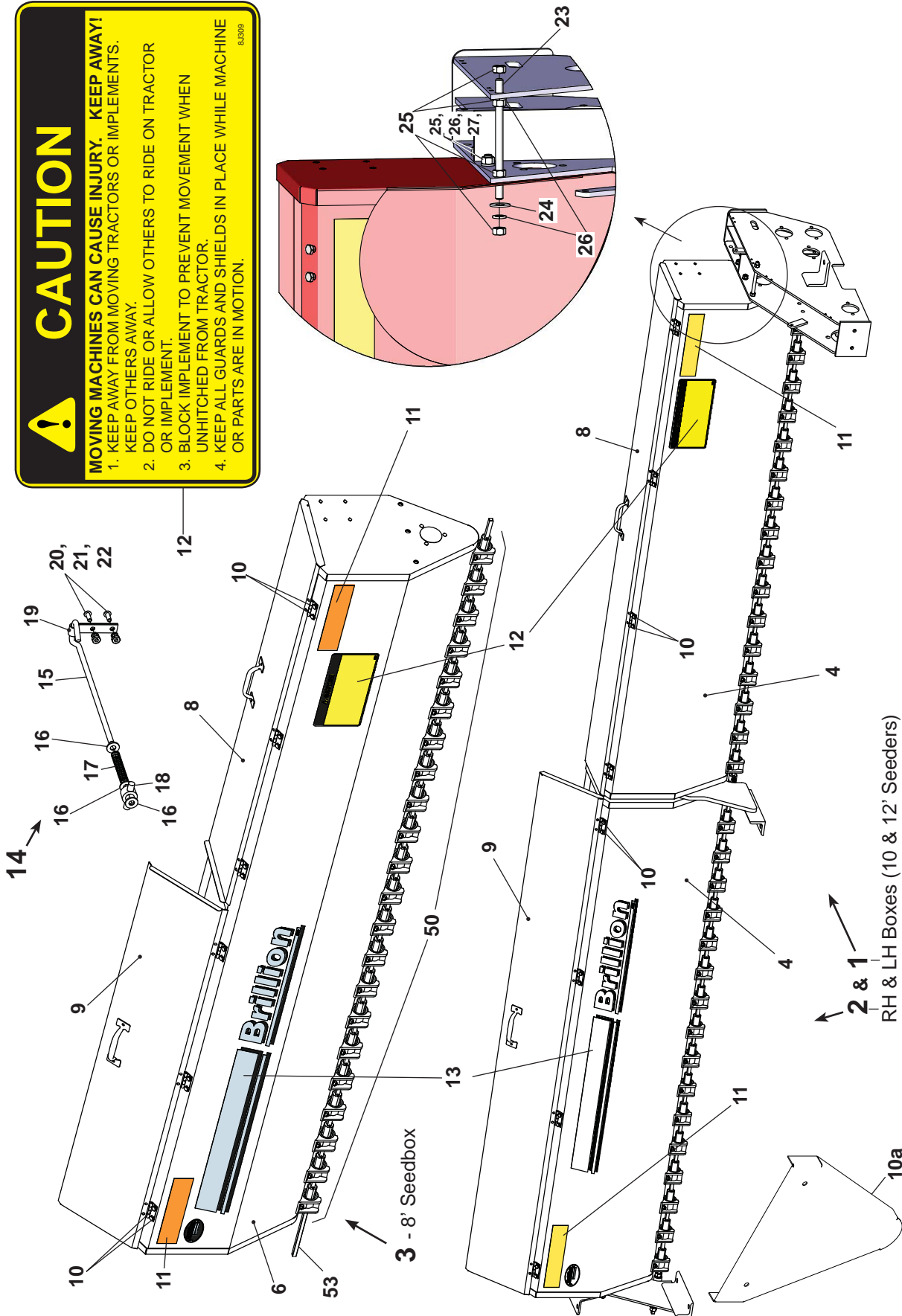
### TRANSMISSION - Case & Drive

Index Number	Part Number	Quantity	Description	Weight
7	9J903	1	6 TOOTH INPUT SPROCKET	1.94
10	9J388	1	PIN,0.75 x 4.5 H1	0.55
32	9J367	1	TRANSMISSION CASE	45.50
33	2K957	1	IDLER	1.56
34	9C134	2	WASHER,FLT 1/2 SAE,ZP	0.02
35	6D744	1	HHCS,1/2-13 x 2-3/4,Gr5,ZP	0.20
36	9J923	1	ROLLER CHAIN ASM	0.46
37	9J392	1	COVER ASSEMBLY, TOP	1.26
38	9J395	1	COVER ASSEMBLY	1.38
39	1C213	8	RND HD,#10-24 x 1/2,ZP	0.01
40	1C372	8	WASHER,LOCK #10,ZP	0.00
41	1C386	8	NUT,HEX #10-24,ZP	0.00
42	5D110	2	KLIK-PIN,1/4 x 1-3/4	0.05
43	9J436	1	STUD	0.19
44	1C277	4	NUT,HEX 3/8-16,ZP	0.02
45	1C183	2	WASHER,LOCK 3/8,ZP	0.01
46	5K319	2	WRENCH, 1-1/2"	1.37
47	6C400	1	HAIR PIN COTTER,3/32	0.00
48	9J926	1	COVER	0.16
49	7C858	2	HHCS,5/16-18 x 3/4,Gr5,ZP	0.03
50	6D037	4	HHCS,5/16-18 x 1,Gr5,ZP	0.04
51	1C362	6	WASHER,LOCK 5/16,ZP	0.00
52	1C385	6	NUT,HEX 5/16-18,ZP	0.01
53	2K503	4	FLANGETTE HALF,2 BLT	0.10
54	1D598	2	BRG,3/4 BORE W/COLLAR	0.48
55	7J422	1	TUBE,RND 0.76 x 1.0 x 0.875	0.08
56	4K928	1	TRANSMISSION PLATE	1.18
57	1C334	2	HHCS,1/2-13 x 1-1/4,Gr5,ZP	0.11
58	1C109	4	WASHER,LOCK 1/2,ZP	0.01
59	1C390	4	NUT,HEX 1/2-13,ZP	0.04
60	8C527	1	HHCS,1/2-13 x 1-1/2,Gr5,ZP	0.13

# CAUTION

- MOVING MACHINES CAN CAUSE INJURY. KEEP AWAY!**
1. KEEP AWAY FROM MOVING TRACTORS OR IMPLEMENTS. KEEP OTHERS AWAY.
  2. DO NOT RIDE OR ALLOW OTHERS TO RIDE ON TRACTOR OR IMPLEMENT.
  3. BLOCK IMPLEMENT TO PREVENT MOVEMENT WHEN UNHITCHED FROM TRACTOR.
  4. KEEP ALL GUARDS AND SHIELDS IN PLACE WHILE MACHINE OR PARTS ARE IN MOTION.

8.009



## SEEDBOX ASSEMBLIES

Index Number	Part Number	Quantity			Description	Weight
		12'	10'	8'		
1	2K936	1			LH SEEDBOX ASM,6 FT (without Cover)	39.45
	1K152		1		LH SEEDBOX ASM,5 FT (without Cover)	31.80
2	2K937	1			RH SEEDBOX ASM,6 FT (without Cover)	39.75
	1K153		1		RH SEEDBOX ASM,5 FT (without Cover)	32.11
3	9J922			1	SEEDBOX ASM,8 FT (without Cover)	66.10
<i>[All Seedbox Assemblies (items 1, 2, &amp; 3) include Cover Lock &amp; Seed Shaft Assemblies]</i>						
4	2K945	2			SEEDBOX,6 FT (12' Seeders, used RH & LH-shown)	26.87
5	4D369		1		SEEDBOX,5 FT LH (10' Seeders-not shown)	21.33
	4D370		1		SEEDBOX,5 FT RH (10' Seeders-not shown)	21.33
6	4D368			1	SEEDBOX,8 FT LANDSCAPE	36.39
7	2K950	2			COVER,6 FT (used RH & LH)	21.46
8	3J457		1		LH COVER,5 FT	9.44
	6J562			1	LH COVER,4 FT	6.07
9	3J456		1		RH COVER,5 FT	9.44
	6J571			1	RH COVER,4 FT	6.08
10	3K424	16	16	12	HHCS,1/4-20 x 1/2,Gr5,ZP	0.01
--	1P850	1			SL DIVIDER KIT, 12' (optional-cannot be used w/ agitator kit)	16.00
--	1P851		1		SL DIVIDER KIT, 10' (optional-cannot be used w/ agitator kit)	19.20
--	1P852			1	SL DIVIDER KIT, 8' (optional-cannot be used w/ agitator kit)	25.60
10a	1P818	16	12	10	SL DIVIDER, ADDITIONAL (for above Divider Kit)	1.60
11	2J431		2		DECAL, AMBER REFLECTIVE	0.01
12	8J309		1		DECAL,CAUTION	0.01
13	4K039		2		DECAL,BRILLION	0.03
14	2C360		4		COVER LOCK ASM (items 15-18)	0.23
15	2C403		1		PIVOT LOCK STEM	0.16
16	3C708		3		WASHER,FLT 1/4 SAE,ZP	0.00
17	1C212		1		BOX COVER SPRING	0.00
18	1C193		1		COVER LOCK PIVOT	0.05
19	3C341		4		COVER LOCK CLIP	0.04
20	1C213		8		RND HD,#10-24 x 1/2,ZP	0.01
21	1C372		8		WASHER,LOCK #10,ZP	0.00
22	1C386		8		NUT,HEX #10-24,ZP	0.00
23	9J436		1		STUD	0.19
24	1C182	12	12	6	WASHER,FLT 3/8 STD,ZP	0.01
25	1C277	18	16	12	NUT,HEX 3/8-16,ZP	0.02
26	1C183	16	14	10	WASHER,LOCK 3/8,ZP	0.01
27	4C803	3	3	3	HHCS,3/8-16 x 1,Gr5,ZP	0.05
28	4D904	3	3	0	HHCS,3/8-16 x 1-1/2,Gr5,ZP	0.07
29	9C078	2	2	2	HHCS,3/8-16 x 1-1/4,Gr5,ZP	0.06
50	9J929			1	SEEDMETER SHAFT ASM (8-FT) <i>[includes items 53-58]</i>	14.75
53	9J912			1	SEED SHAFT, 8-FT	4.00

continued on next page

Seed Box May Be Calibrated for Unfilled Seed as Follows:

1. Turn the Seed Box to the Transport Position.
2. Raise machine & lock in transport position.
3. Place a tarp under machine to collect seed.
4. Turn the seed box cover as follows:
  - 1000 revolutions - for 10 Seed/box
  - 1000 revolutions - for 12 Seed/box
  - 1000 revolutions - for 15 Seed/box
  - 1000 revolutions - for 20 Seed/box
  - 1000 revolutions - for 25 Seed/box
  - 1000 revolutions - for 30 Seed/box
  - 1000 revolutions - for 35 Seed/box
  - 1000 revolutions - for 40 Seed/box
  - 1000 revolutions - for 45 Seed/box
  - 1000 revolutions - for 50 Seed/box
  - 1000 revolutions - for 55 Seed/box
  - 1000 revolutions - for 60 Seed/box
  - 1000 revolutions - for 65 Seed/box
  - 1000 revolutions - for 70 Seed/box
  - 1000 revolutions - for 75 Seed/box
  - 1000 revolutions - for 80 Seed/box
  - 1000 revolutions - for 85 Seed/box
  - 1000 revolutions - for 90 Seed/box
  - 1000 revolutions - for 95 Seed/box
  - 1000 revolutions - for 100 Seed/box
5. Weigh the seed and divide by the number of revolutions for approximate planting rate in lbs/acre.

Tightener  
 13 Tooth driver  
 37 Tooth Driver  
 43 Tooth Kiler

\* Will check some seeds at these settings.  
 Not recommended: Lentils, Sorghum, Sudan Grass

SEMI

**PLANTING RATES FOR SEED BOX**

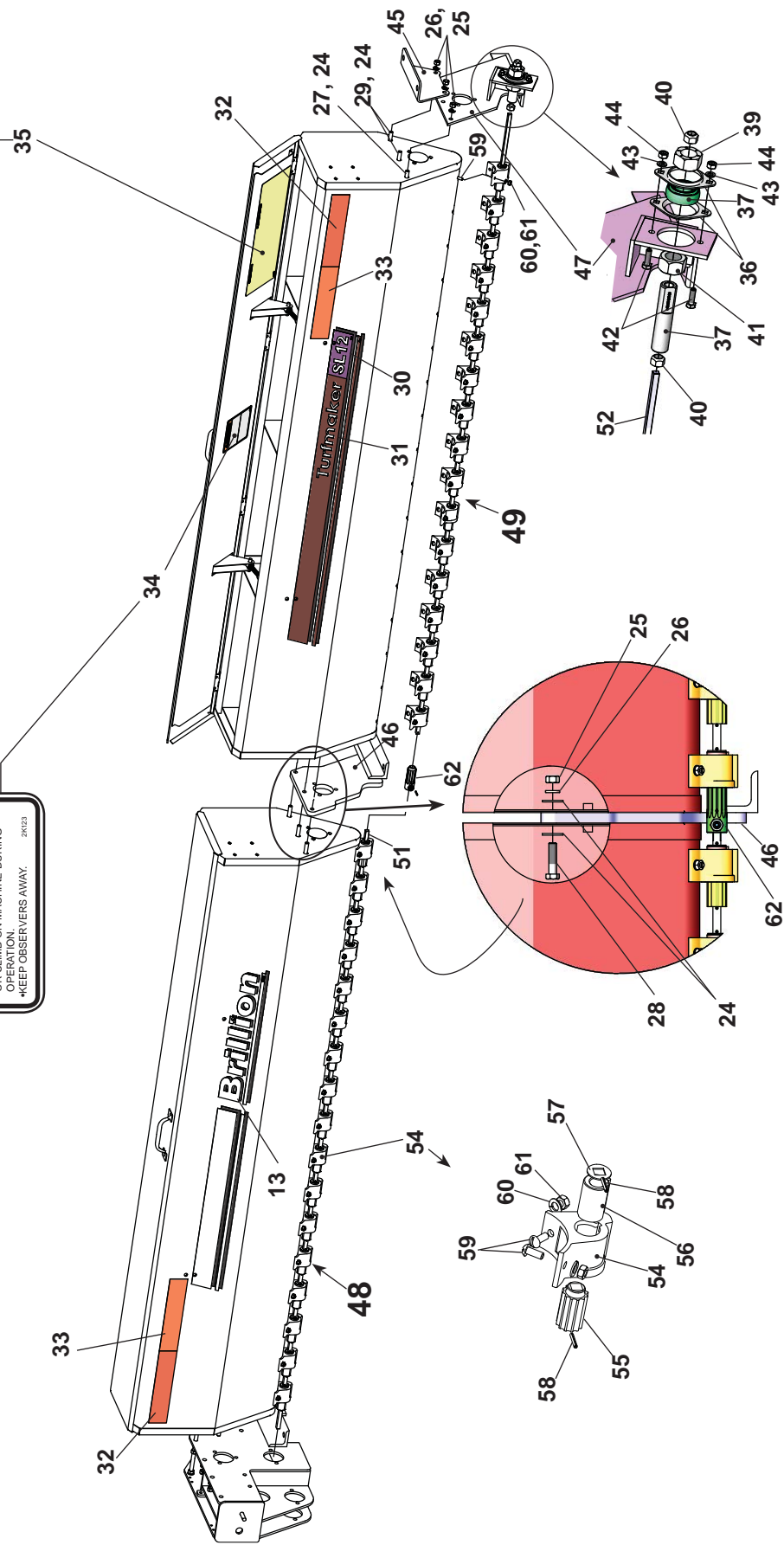
INDICATOR SETTING	1	2	3	4	5	6	7	8
POUNDS PER ACRE								
POUNDS PER 1000 SQ. FT.								

**WARNING**

**MOVING PART HAZARD**  
 TO PREVENT SERIOUS INJURY  
 FROM MOVING PARTS:

- KEEP COVERS CLOSED DURING OPERATION.
- DO NOT ALLOW ANYONE TO RIDE OR CLIMB ON MACHINE DURING OPERATION.
- KEEP OBSERVERS AWAY.

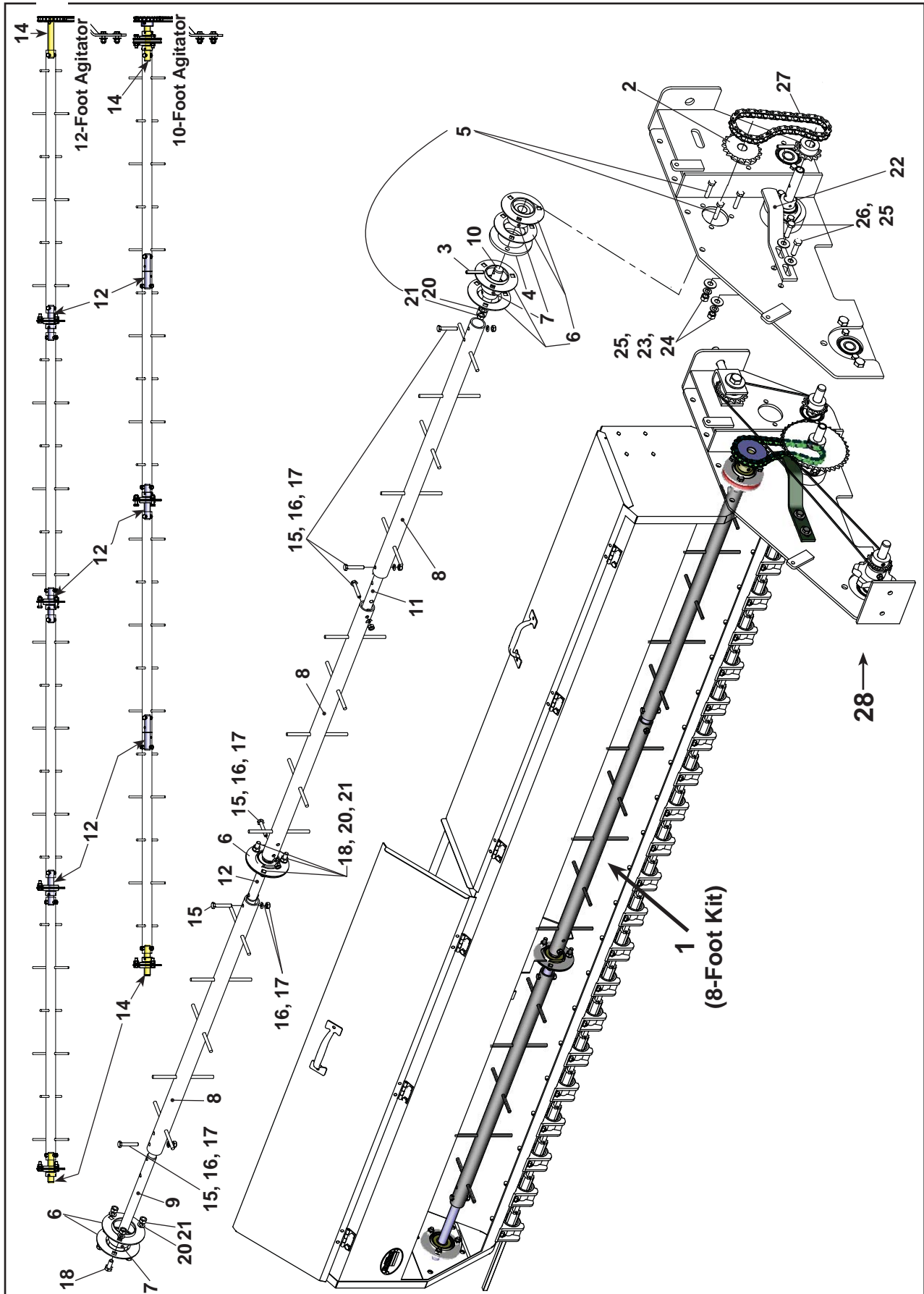
2K123



**SEEDBOX ASSEMBLIES, cont'd**

Index Number	Part Number	Quantity			Description	Weight
		12'	10'	8'		
13	4K039	(If Variable w/ Model) 2			DECAL,BRILLION	0.03
24	1C182	12	12	6	WASHER,FLT 3/8 STD,ZP	0.01
25	1C277	18	16	12	NUT,HEX 3/8-16,ZP	0.02
26	1C183	16	14	10	WASHER,LOCK 3/8,ZP	0.01
27	4C803	3	3	3	HHCS,3/8-16 x 1,Gr5,ZP	0.05
28	4D904	3	3	0	HHCS,3/8-16 x 1-1/2,Gr5,ZP	0.07
29	9C078	2	2	2	HHCS,3/8-16 x 1-1/4,Gr5,ZP	0.06
30	4K192	1			DECAL,SL12	0.02
	4K191		1		DECAL,SL10	0.02
	4K190			1	DECAL,SL8	0.02
31	4K388		1		DECAL, TURFMAKER	0.10
32	2J430		2		DECAL, RED REFLECTIVE	0.01
33	8K597		2		DECAL, RED-ORANGE	0.01
34	2K123		2		DECAL,WARNING	0.01
35	9J881		1		DECAL,SEED CHART	0.24
36	1D617		2		FLANGETTE HALF,2 BLT	0.10
37	4D413		1		BRG,1" BORE	0.49
38	9J433		1		ADJUSTING SCREW	0.68
39	4D402		1		SEED RATE ADJUSTING NUT	0.27
40	5C392		2		NUT,LOCK 1/2-13,GrB,ZP	0.04
41	4D414		1		NUT,HEX 1-8,ZP	0.28
42	6D037		2		HHCS,5/16-18 x 1,Gr5,ZP	0.04
43	1C362		2		WASHER,LOCK 5/16,ZP	0.00
44	1C385		2		NUT,HEX 5/16-18,ZP	0.01
45	9K823		1		ANGLE,LIGHT BRKT	2.19
46	9K328	1	1	0	BRACKET,CENTER WLD	12.53
47	2K939	1	0	0	SUPPORT,RH	10.13
	9J909	0	1	1	SUPPORT,RH	10.13
48	2K946	1			<b>LH SEEDMETER SHAFT ASM (6-ft.)</b>	<b>11.23</b>
	1K148		1		<b>LH SEEDMETER SHAFT ASM (5-ft.)</b>	<b>9.26</b>
					<i>[includes items 51 &amp; 54-58]</i>	
49	2K947	1			<b>RH SEEDMETER SHAFT ASM (6-ft.)</b>	<b>11.54</b>
	1K150		1		<b>RH SEEDMETER SHAFT ASM (5-ft.)</b>	<b>9.57</b>
					<i>[includes items 52 &amp; 54-58]</i>	
50	9J929			1	<b>SEEDMETER SHAFT ASM (8-FT) [on prev. pg.+ items 53-58]</b>	<b>14.75</b>
51	2K948	1			SEED SHAFT LH, 6-ft.	2.93
	1K149		1		SEED SHAFT LH, 5-ft.	2.42
52	2K949	1			SEED SHAFT RH, 6-ft.	3.04
	1K151		1		SEED SHAFT RH, 5-ft.	2.54
53	9J912			1	SEED SHAFT, 8-FT	4.00
54	4C589	34	28	22	PLASTIC SEED CUP	0.10
55	1C242	33	27	22	FEED ROLL	0.19
56	1C243	34	28	22	FEED CUT-OFF	0.19
57	1C245	34	28	22	FEED CUT-OFF WASHER	0.01
58	1C272	68	56	44	ROLL PIN,1/8 x 3/4,ZP	0.00
59	4C750	68	56	44	RND HD,1/4-20 x 5/8,ZP	0.01
60	1C354	68	56	44	WASHER,LOCK 1/4,ZP	0.00
61	1C355	68	56	44	NUT,HEX 1/4-20,ZP	0.01
62	1K138	1	1	1	FEED ROLL COUPLING ASM	0.38

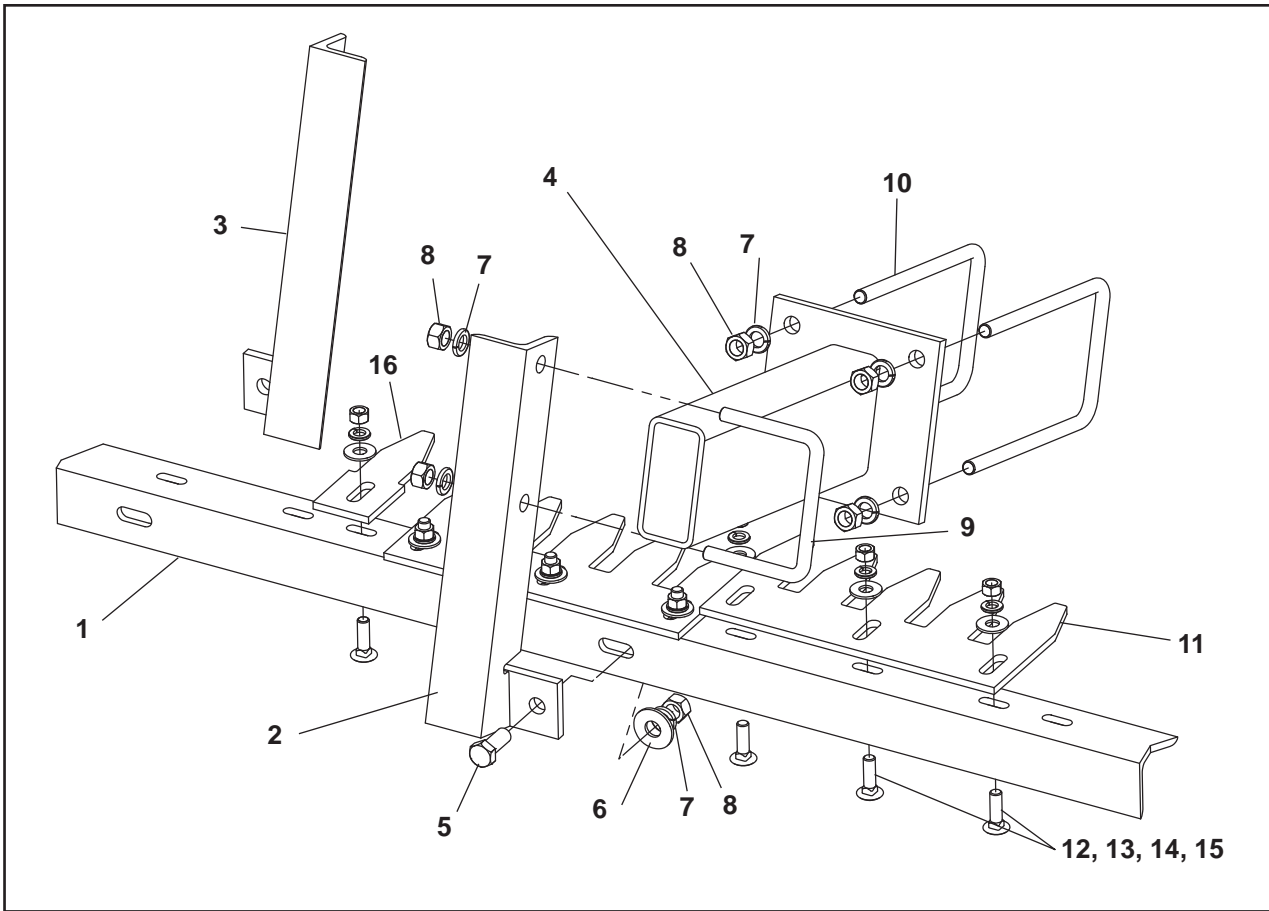
1P341





## AGITATOR KIT

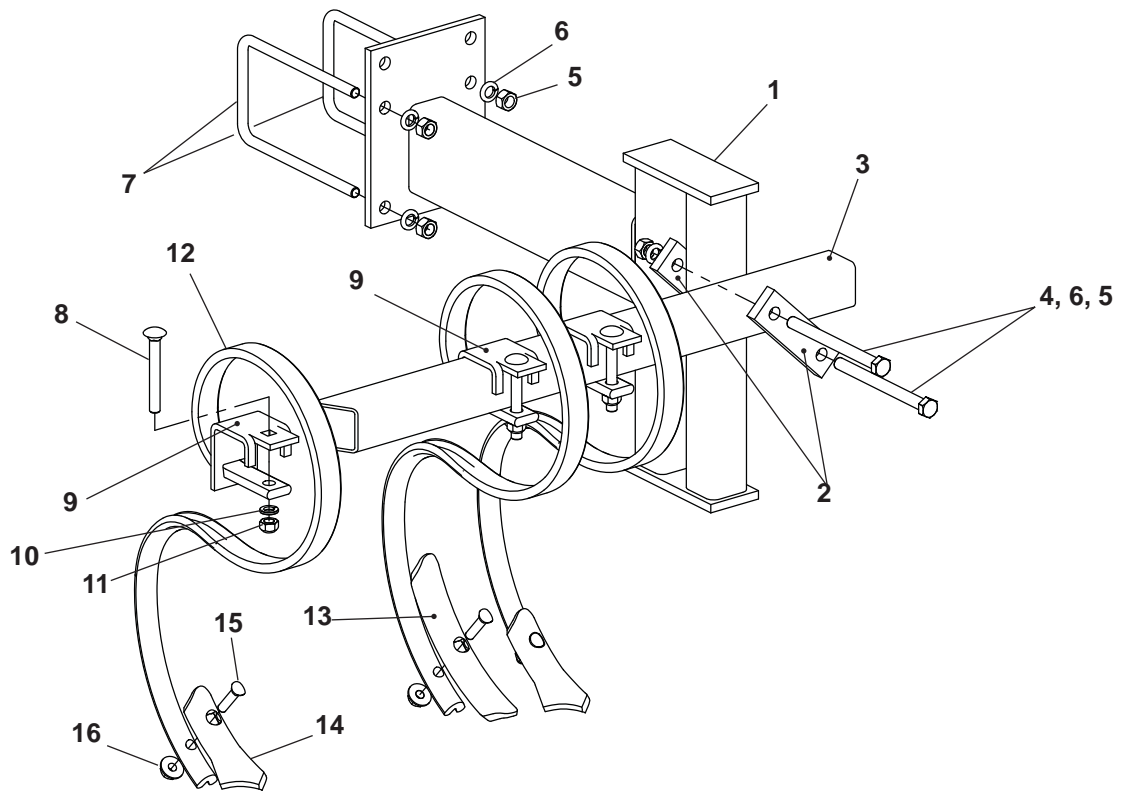
Index Number	Part Number	Quantity			Description	Weight
		12'	10'	8'		
1	2K961	1			AGITATOR KIT FOR 12' SEEDER	24.00
	1K193		1		AGITATOR KIT FOR 10' SEEDER	28.00
	1K715			1	AGITATOR KIT FOR 8' SEEDER	32.00
2	1K200		1		SPROCKET,#40B19x3/4 BORE	0.44
3	1C659		1		ROLL PIN,1/4 x 1-1/2	0.01
4	1K202		1		SPACER	0.40
5	9D796		3		HHCS,5/16-18 x 1-1/2,Gr5,ZP	0.05
6	1D599	12	8	8	FLANGETTE HALF,3 BLT	0.20
7	1D598	6	4	4	BRG,3/4 BORE W/COLLAR	0.48
8	1K194	0	4	3	AGITATOR, 8-Ft & 10-Ft Seeders	3.70
	2K942	4	0	0	AGITATOR, 12-Ft Seeders	3.70
9	1K714	0	0	1	LONG END SHAFT, AGITATOR (9-1/2" Long)	1.15
					<i>8-Ft Seeders; used RH if Brg. is on 3rd Div., LH if Brg. on 2nd Div.</i>	
10	3K436	0	0	1	END SHAFT, AGITATOR (4-1/2" Long, 2 holes)	0.63
					<i>8-Ft Seeders only; used RH if Brg. is on 2nd Div., LH if Brg. on 3rd Div.</i>	
11	3K435	0	0	1	SHAFT, AGITATOR (4-1/2" Long, 4 holes)	0.54
					<i>8-Ft. Seeders only; Center shaft at position w/out Brg.</i>	
12	1K198	3	3	1	CENTER SHAFT,AGITATOR (4-1/2" Long)	0.54
13	1K197	1	1	0	LEFT SHAFT, AGITATOR (5-1/4" Long)	0.63
					<i>10-Ft &amp; 12-Ft Seeders, at transmission end</i>	
14	1K199	1	1	0	PIN,0.75 x 3.875 H1 (1 Hole)	0.47
					<i>10-Ft &amp; 12-Ft Seeders, RH side end shaft</i>	
15	1K204	8	8	6	HHCS,1/4-20 x 1-1/2,Gr5,ZP	0.03
16	1C354	8	8	6	WASHER,LOCK 1/4,ZP	0.00
17	1C355	8	8	6	NUT,HEX 1/4-20,ZP	0.01
18	1C361	9	3	6	HHCS,5/16-18 x 1,Gr2,ZP	0.03
19	7D077	3	3	0	HHCS,5/16-18 x 1-1/4,Gr5,ZP	0.04
20	1C362	15	9	9	WASHER,LOCK 5/16,ZP	0.00
21	1C385	15	9	9	NUT,HEX 5/16-18,ZP	0.01
22	1K203		1		TENSION BAR	0.72
23	1C183		2		WASHER,LOCK 3/8,ZP	0.01
24	1C277		2		NUT,HEX 3/8-16,ZP	0.02
25	1C182		2		WASHER,FLT 3/8 STD,ZP	0.01
26	1C232		2		HHCS,3/8-16 x 1-1/4,Gr2,ZP	0.06
27	1K201		1		AGIT. CHAIN, #40 ROLLER, 39 PITCHES, w/ CONN. LINK	0.11
28	9J908		1		TRANSMISSION ASSEMBLY	64.33



(If Variable w/ Model)

**SCRAPER KIT: 12' - 2K526; 10' - 1K224; 8' - 1K225**

Index Number	Part Number	Quantity 12' / 10' / 8'	Description	Weight
1	2K467	1	ANGLE, 12'	35.66
	1K219	1	ANGLE, 10'	29.28
	1K228	1	ANGLE, 8'	23.54
2	1K214	2 / 2 / 1	LH BRACKET	4.35
3	1K215	1	RH BRACKET	4.35
4	1K212	3 / 3 / 2	BRACKET	10.14
5	1C334	3 / 3 / 2	HHCS, 1/2-13 x 1-1/4, Gr5, ZP	0.11
6	1C120	3 / 3 / 2	WASHER, FLAT 1/2 STD, ZP	0.04
7	1C109	21 / 21 / 14	WASHER, LOCK 1/2, ZP	0.01
8	1C390	21 / 21 / 14	NUT, HEX 1/2-13, ZP	0.04
9	5J915	3 / 3 / 2	U-BOLT, 1/2-13 x 4-9/16 x 3-1/4, ZP	0.47
10	3J561	6 / 6 / 4	U-BOLT, 1/2-13 x 4 1/2 x 7-1/2, ZP	0.85
11	1K220	12 / 10 / 8	SCRAPER	2.99
12	2C369	38 / 31 / 25	CB, 3/8-16 x 1-1/4, Gr2, ZP	0.06
13	1C182	38 / 31 / 25	WASHER, FLAT 3/8 STD, ZP	0.01
14	1C183	38 / 31 / 25	WASHER, LOCK 3/8, ZP	0.01
15	1C277	38 / 31 / 25	NUT, HEX 3/8-16, ZP	0.02
16	1K221	2 / 1 / 1	CENTER SCRAPER	0.56

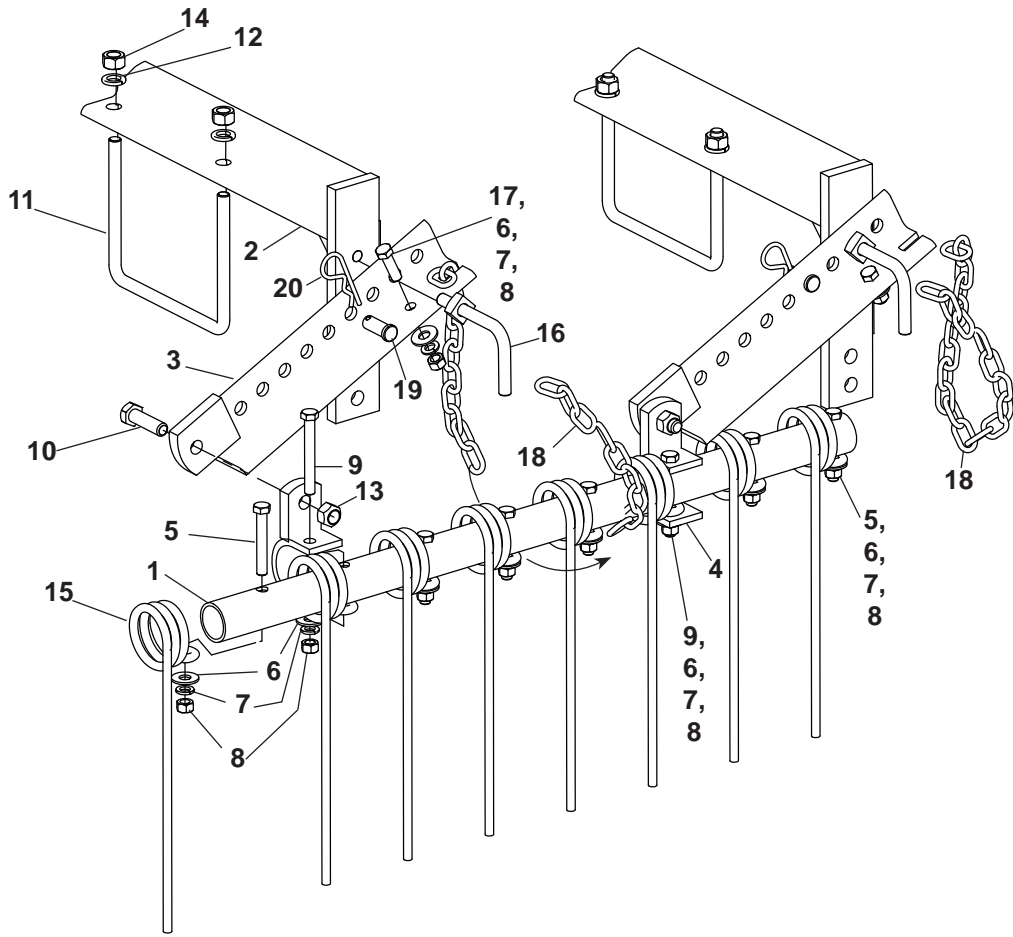


**S-TINE TRACK REMOVER KIT**

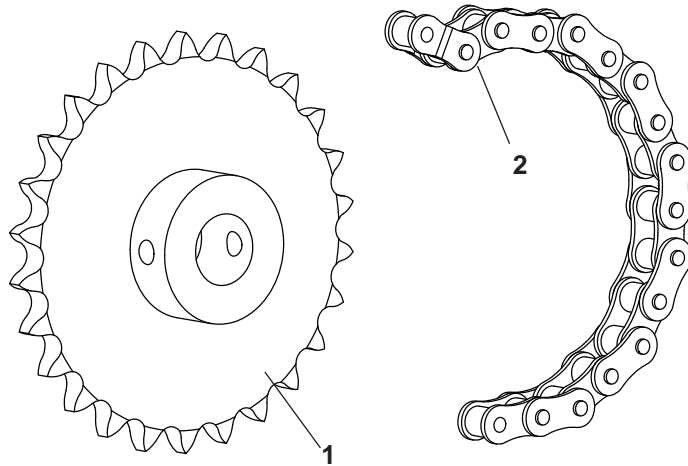
Index Number	Part Number	Quantity	Description	Weight
-	2K496	1	S-TINE TIRE TRACK REMOVER KIT - 12 FT.	--
-	9J438		S-TINE TIRE TRACK REMOVER KIT - 10 FT.	--
-	9J931		S-TINE TIRE TRACK REMOVER KIT - 8 FT. DRAWBAR	--
1	9J474	2	S-TINE BRACKET	23.10
2	5J358	4	STRAP	0.97
3	9J962	1	TOOTH BAR TUBE, 12 FT.	30.00
	9J477	1	TOOTH BAR TUBE, 10 FT.	--
	9J579	1	TOOTH BAR TUBE, 8 FT.	--
4	1C675	4	HHCS, 1/2-13 x 6" GR 5	0.36
5	1C390	12	NUT, 1/2-13 HEX	0.04
6	1C109	12	LOCKWASHER, 1/2 REG.	0.01
7	3J561	4	U-BOLT, 1/2-13	0.90
8	2J241	6	CARRIAGE BOLT, 7/16-14 x 3 1/2 GR 5	0.20
9	1J834	6	CLAMP	0.80
10	1C314	6	LOCKWASHER, 7/16 REG	0.01
11	1D014	6	LOCK NUT, 7/16-14	0.03
12	1J887	6	S-TINE	6.00
13	2J155	2	1-3/8 REVERSIBLE POINT	0.70
14	7D014	4	2 1/2 DUCK FOOT POINT	0.50
15	7D728	6	CULTIVATOR BOLT, 3/8-16 x 1 3/4	0.10
16	5J616	6	FLANGE LOCK NUT, 3/8-16	0.02

1P341

# COIL TINE TRACK REMOVER



# 9J495 SPEED UP KIT

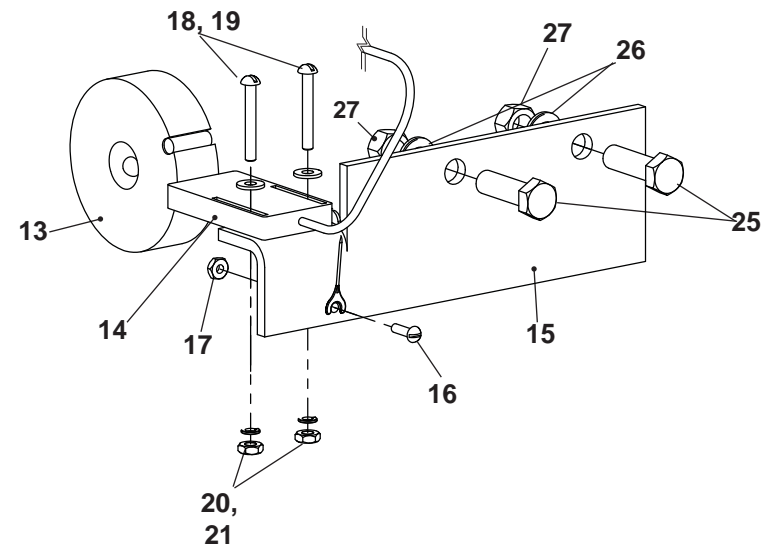
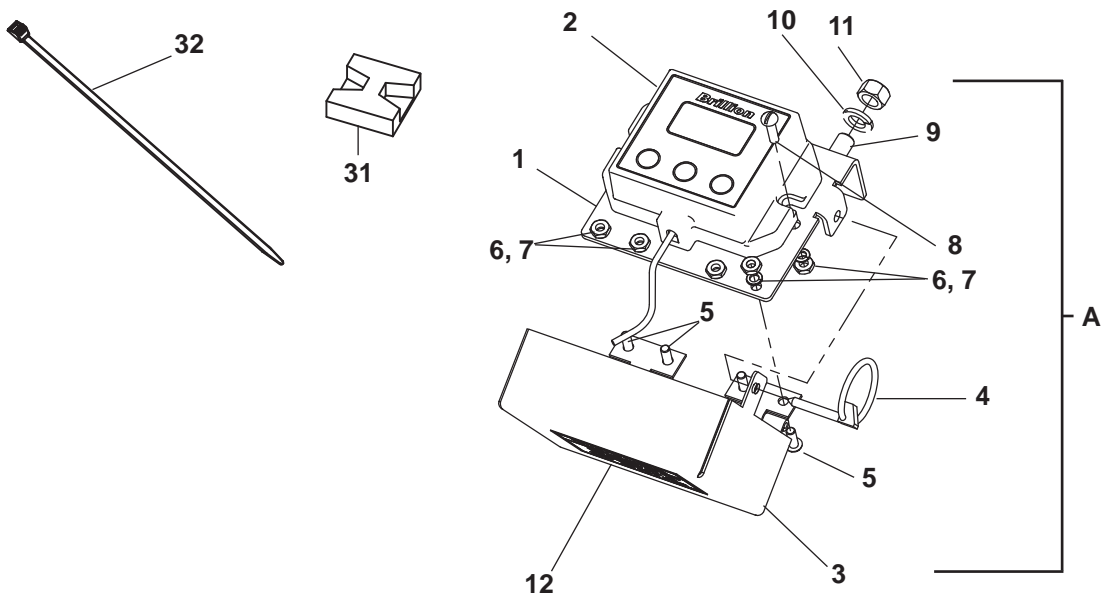


COIL TINE TRACK REMOVER				
Index Number	Part Number	Quantity	Description	Weight
1	5J601	2	BAR	4.19
2	9J942	4	BRACKET	8.03
3	7J093	4	ADJUSTING ANGLE	3.55
4	7J095	4	ARM WELDMENT	0.96
5	1C508	12	HHCS,3/8-16 x 2-1/2,Gr2,ZP	0.10
6	1C182	14	WASHER,FLT 3/8 STD,ZP	0.01
7	1C183	18	WASHER,LOCK 3/8,ZP	0.01
8	1C277	18	NUT,HEX 3/8-16,ZP	0.02
9	3C236	4	HHCS,3/8-16 x 3,Gr2,ZP	0.11
10	5D051	4	HHCS,1/2-13 x 1-3/4,Gr5,ZP	0.14
11	4J918	4	U-BLT,1/2-13 x 6-1/2 x 5-1/4,ZP	0.75
12	1C109	8	WASHER,LOCK 1/2,ZP	0.01
13	5C392	4	NUT,LOCK 1/2-13,GrB,ZP	0.04
14	1C390	8	NUT,HEX 1/2-13,ZP	0.04
15	5J603	16	COIL TINE	0.70
16	7J088	4	LOCKSCREW, 1/2-13	0.32
17	9C078	2	HHCS,3/8-16 x 1-1/4,Gr5,ZP	0.06
18	3J951	2	CHAIN, 3/16 -20 LINKS	0.46
19	7J096	4	CLEVIS PIN, 1/2 x 1-1/4	.11
20	4C856	4	HAIRPIN COTTER	--

Page 29a

**9J495 SPEED UP KIT**

Index Number	Part Number	Quantity	Description	Weight
1	9J617	1	SPROCKET,#40B26x3/4 BORE	0.44
2	9J618	1	#40 ROLLER CHAIN, 8 PITCHES, includes CONN. LINK	2.60



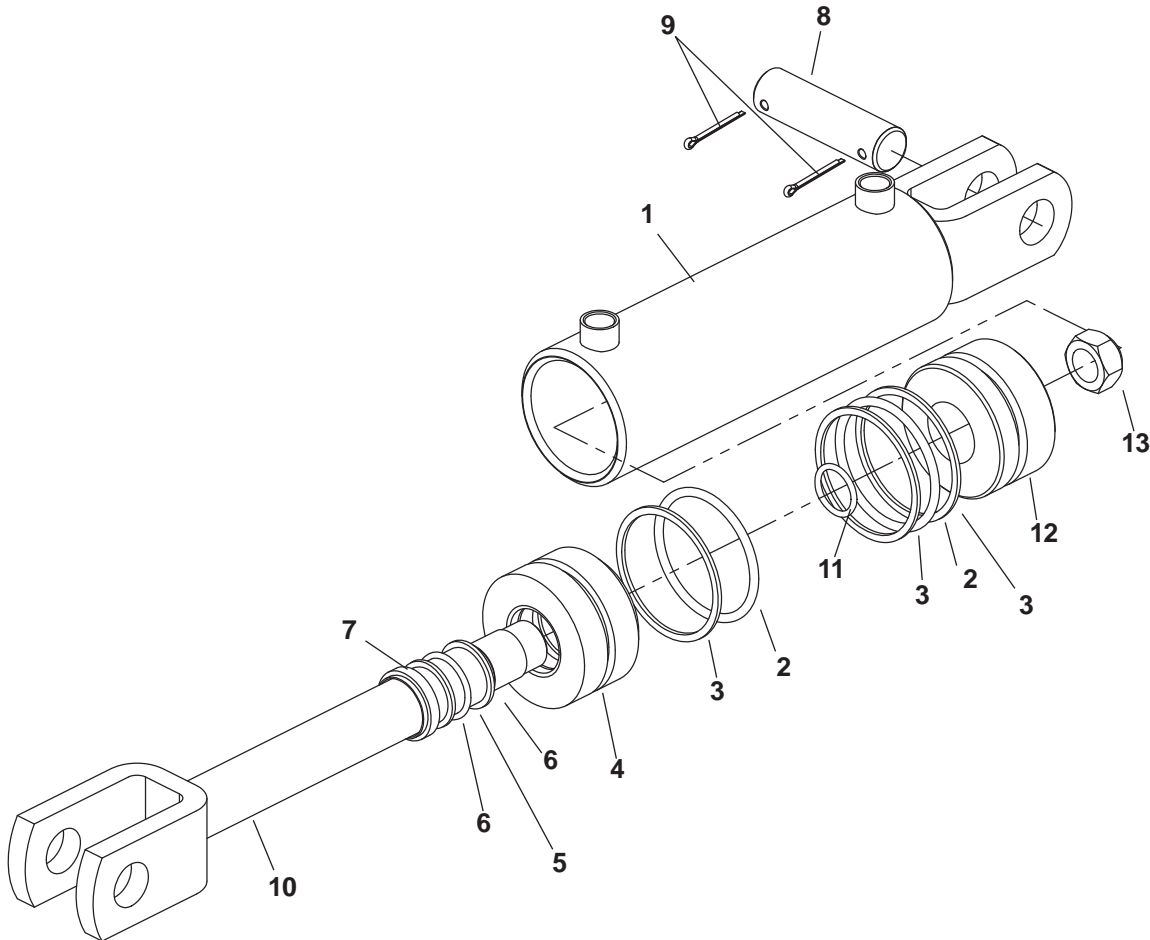


<b>ELECTRONIC ACRE METER (Optional)</b>				
<b>Index Number</b>	<b>Part Number</b>	<b>Quantity</b>	<b>Description</b>	<b>Weight</b>
--	<b>5K745</b>		<b>ELECTRONIC ACRE METER KIT</b>	
<b>A</b>	<b>5K310</b>	<b>1</b>	<b>ACRE METER ASSEMBLY (Items 1-12)</b>	<b>2.4</b>
1	9K739	1	BRACKET,ACRE METER	0.71
2	5K276	1	ACRE METER	0.50
3	9K741	1	COVER,ACRE METER WLD	0.91
4	5D129	1	KLIK-PIN	0.03
5	1C213	4	RND HD,#10-24 x 1/2,ZP	0.01
6	1C372	6	WASHER,LOCK #10,ZP	0.01
7	1C386	6	NUT,HEX #10-24,ZP	0.01
8	9J364	2	RND HD,#10-24 x 3/4,ZP	0.01
9	4C803	2	HHCS,3/8-16 x 1,Gr5,ZP	0.05
10	1C183	2	WASHER,LOCK 3/8,ZP	0.01
11	1C277	2	NUT,HEX 3/8-16,ZP	0.02
12	9K740	1	DECAL,ACRE METER	0.02
13	5K277	1	MAGNET WHEEL ASSEMBLY	0.20
14	5K278	1	PICKUP	0.34
15	5K714	1	MOUNTING BRACKET	0.97
16	2D045	1	RND HD,#6-32 x 1/2,ZP	0.01
17	5K266	1	NUT,HEX #6-32,ZP	0.01
18	5K262	2	RND HD,#8-32 x 1-1/4,ZP	0.01
19	5K263	2	WASHER,FLAT #8 SAE,ZP	0.01
20	5K264	2	WASHER,LOCK #8,ZP	0.01
21	5K265	2	NUT,HEX #8-32,ZP	0.01
22	9J364	2	RND HD,#10-24 x 3/4,ZP	0.01
23	1C372	6	WASHER,LOCK #10,ZP	0.01
24	1C386	6	NUT,HEX #10-24,ZP	0.01
25	9C078	2	HHCS, 3/8-16 X 1 1/4, GR 5	0.01
26	1C183	2	WASHER,LOCK 3/8,ZP	0.01
27	1C277	2	NUT,HEX 3/8-16,ZP	0.02
28	6D037	2	HHCS, 5/6-18 X 1, GR 5	0.03
29	1C362	2	LOCKWASHER, 5/16	0.01
30	1C385	2	NUT, 5/16-18	0.01
31	5K287	6	CABLE TIE MOUNTING BASE	0.01
32	5K288	6	CABLE TIE	0.01

9J440G Hydraulic Cylinder 2 1/2 x 6  
 Hydraulic Gear #2506-01 Painted Black  
 1 1/4 Dia. Rod, 16-1/4" Retracted, 22-1/4" Extended

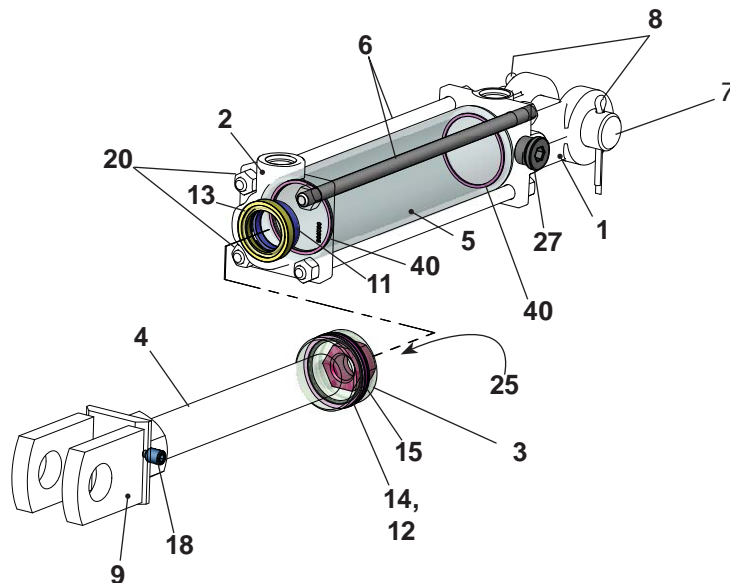
<u>Item</u>	<u>Part No.</u>	<u>Description</u>	<u>Qty.</u>
1	9J655	Tube Assembly	1
*2	NSS	O-Ring	2
*3	NSS	Back-Up Ring	2
4	6J544	Packing Gland	1
*5	NSS	O-Ring	1
*6	NSS	Back Up Ring	2
*7	NSS	Wiper	1
8	5J650	Cylinder Pin	1
9	4C856	Cotter Pin, 3/16 x 2"	2
10	9J656	Rod Assembly	1
*11	NSS	Seal	1
12	6J546	Piston	1
13	6D918	Hex Nut 3/4-16 NF Lock	1
*	6J542	Seal Kit (Items marked "**")	

NSS = Not Serviced Separately



9J440L Hydraulic Cylinder 2 1/2 x 6  
 Lion #648291 Painted Black  
 1 1/8 Dia. Rod, 16-1/4" Retracted, 22-1/4" Extended

Index Number	Part Number	Quantity	Description	Vendor Number
1	NSS	1	Clevis Cap	492674
2	NSS	1	Rod Cap	492673
3	NSS	1	Piston	294726
4	NSS	1	Rod	492850
5	NSS	1	Tube	491666
6	NSS	4	Tie Rod	492216
7	5C370	1	Clevis Pin, 1" dia. X 3-3/8" (replacement use)	134953
8	1C788	2	Clevis Pin Cotters, 3/16 x 1-1/2 (replacement use)	135995
9	1P427	1	CLEVIS, 1.125-12 WLD	1.56
*10	NSS	2	End Cap O-ring	
*11	NSS	1	Rod U-Cup Seal	
*12	NSS	1	Piston PTFE Expander	
*13	NSS	1	Rod Dirt Wiper	
*14	NSS	1	Piston PTFE Seal	
*15	NSS	1	Piston Wear Ring	
17	1P427		Rod Clevis	n/r
18	1P443		Set Screw	n/r
20	1C277	8	Tie Rod Nut, 3/8-16 Std. Hex	128230
25	-	1	Piston Nut, 3/4-16UNF	130556
27	-	1	Port Plug	186562
*40	NSS	2	End Cap Backup Washers	
	1P742	1	Seal Kit (includes items 10-15 & 40)	648395



# Index

Part No.	Page No.	Index No.	Part No.	Page No.	Index No.	Part No.	Page No.	Index No.
**4C129	9	27	1C213	21	20	1C372	31	6
**6K911	9	26	1C213	31	5	1C372	31	23
**8J789	9	29	1C229	3	21	1C385	3	17
1B166	3	39	1C229	5	14	1C385	5	33
1B166	5	40	1C229	7	16	1C385	7	31
1B166	7	25	1C229	13	3	1C385	17	27
1B166	15	15	1C232	25	26	1C385	19	52
1B166	17	20	1C242	23	55	1C385	23	44
1C109	3	10	1C243	23	56	1C385	25	21
1C109	5	26	1C245	23	57	1C385	31	30
1C109	7	34	1C272	23	58	1C386	19	41
1C109	13	14	1C277	3	4	1C386	21	22
1C109	15	22	1C277	5	20	1C386	31	7
1C109	19	58	1C277	7	28	1C386	31	24
1C109	26	7	1C277	13	18	1C390	3	11
1C109	27	6	1C277	19	44	1C390	5	27
1C109	29a	12	1C277	21	25	1C390	7	35
1C120	26	6	1C277	23	25	1C390	13	15
1C122	17	17	1C277	25	24	1C390	15	23
1C133	3	47	1C277	26	15	1C390	19	59
1C133	15	25	1C277	31	11	1C390	26	8
1C182	3	24	1C277	31	27	1C390	27	5
1C182	21	24	1C277	29a	8	1C390	29a	14
1C182	23	24	1C314	27	10	1C392	3	38
1C182	25	25	1C334	13	13	1C392	5	3
1C182	26	13	1C334	19	57	1C392	15	16
1C182	29a	6	1C334	26	5	1C392	17	21
1C183	3	3	1C354	17	23	1C499	17	28
1C183	5	19	1C354	23	60	1C508	29a	5
1C183	7	27	1C354	25	16	1C659	17	29
1C183	13	19	1C355	17	24	1C659	25	3
1C183	19	45	1C355	23	61	1C675	27	4
1C183	21	26	1C355	25	17	1C788	9	3
1C183	23	26	1C361	25	18	1C968	15	7
1C183	25	23	1C362	3	16	1D014	27	11
1C183	26	14	1C362	5	32	1D273	9	19
1C183	31	10	1C362	7	30	1D424	3	46
1C183	31	26	1C362	17	26	1D424	15	26
1C183	29a	7	1C362	19	51	1D442	15	36
1C193	21	18	1C362	23	43	1D598	17	3
1C210	15	28	1C362	25	20	1D598	19	54
1C211	15	27	1C362	31	29	1D598	25	7
1C212	21	17	1C372	19	40	1D599	25	6
1C213	19	39	1C372	21	21	1D617	23	36

Part No.	Page No.	Index No.	Part No.	Page No.	Index No.	Part No.	Page No.	Index No.
1J390	9	15	1P852	21	--	2K945	21	4
1J463	9	16	2C112	15	9	2K946	23	48
1J486	15	37	2C360	21	14	2K947	23	49
1J834	27	9	2C369	26	12	2K948	23	51
1J887	27	12	2C403	21	15	2K949	23	52
1K138	23	62	2C458	17	6	2K950	21	7
1K148	23	48	2C524	15	32	2K957	19	33
1K149	23	51	2C801	15	33	2K961	25	1
1K150	23	49	2C802	15	8	3C142	9	30
1K151	23	52	2D045	31	16	3C173	9	20
1K152	21	1	2D799	9	2	3C236	29a	9
1K153	21	2	2J155	27	13	3C341	21	19
1K192	17	13	2J241	27	8	3C350	9	21
1K193	25	1	2J430	23	32	3C708	21	16
1K194	25	8	2J431	21	11	3C947	15	12
1K197	25	13	2K123	23	34	3J456	21	9
1K198	25	12	2K316	15	20	3J457	21	8
1K199	25	14	2K454	15	5	3J561	26	10
1K200	25	2	2K455	15	30	3J561	27	7
1K201	25	27	2K456	3	1	3J951	29a	18
1K202	25	4	2K460	15	29	3K424	21	10
1K203	25	22	2K461	15	4	3K435	25	11
1K204	3	27	2K467	26	1	3K436	25	10
1K204	11	3	2K475	15	34	3K706	3	30
1K204	25	15	2K480	15	17	4C144	15	10
1K212	26	4	2K481	15	18	4C589	23	54
1K214	26	2	2K496	27	-	4C688	15	6
1K215	26	3	2K503	17	2	4C689	15	31
1K219	26	1	2K503	19	53	4C750	23	59
1K220	26	11	2K522	15	19	4C803	3	22
1K221	26	16	2K538	17	9	4C803	5	39
1K228	26	1	2K704	3	2	4C803	7	40
1K714	25	9	2K704	5	18	4C803	21	27
1K715	25	1	2K704	7	26	4C803	23	27
1K731	3	45	2K936	21	1	4C803	31	9
1K809	3	48	2K937	21	2	4C856	29a	20
1K822	3	44	2K939	3	8	4C858	9	9
1P342	3	37	2K939	5	24	4D368	21	6
1P342	5	41	2K939	23	47	4D369	21	5
1P342	7		2K940	3	14	4D370	21	5
1P438	11	6	2K940	5	30	4D402	23	39
1P818	21	10a	2K941	3	20	4D413	23	37
1P850	21	--	2K941	5	35	4D414	23	41
1P851	21	--	2K942	25	8	4D561	3	41

Part No.	Page No.	Index No.	Part No.	Page No.	Index No.	Part No.	Page No.	Index No.
4D645	15	1	5D051	29a	10	6D300	3	33
4D904	13	17	5D110	5	11	6D529	5	8
4D904	21	28	5D110	7	10	6D529	7	7
4D904	23	28	5D110	19	42	6D742	15	26
4J082	17	19	5D129	31	4	6D744	19	35
4J548	9	10	5D156	5	7	6J150	3	19
4J867	3	31	5D156	7	6	6J150	5	15
4J918	3	9	5D157	5	10	6J150	5	15
4J918	5	25	5D157	7	9	6J150	7	15
4J918	7	36	5D158	5	9	6J150	13	20
4J918	13	26	5D158	7	8	6J189	9	27
4J918	29a	11	5J358	27	2	6J448	9	5
4K039	21	13	5J392	13	27	6J562	21	8
4K039	23	13	5J601	29a	1	6J571	21	9
4K190	23	30	5J603	29a	15	6K302	11	10
4K191	23	30	5J616	27	16	6K303	11	10
4K192	23	30	5J915	26	9	6K458	3	31
4K388	23	31	5K261	13	21	6K516	17	11
4K602	11	9	5K262	31	18	6K646	5	4
4K607	11	5	5K263	13	8	6K647	7	19
4K608	11	6	5K263	31	19	6K649	5	37
4K614	11	11	5K264	13	9	6K649	7	41
4K619	11	12	5K264	31	20	6K926	9	26
4K636	3	32	5K265	13	10	7C858	3	15
4K878	11	7	5K265	31	21	7C858	5	31
4K887	11	11	5K266	31	17	7C858	7	29
4K888	11	11	5K276	31	2	7C858	19	49
4K900	3	25	5K277	31	13	7D014	27	14
4K900	11	2	5K278	31	14	7D077	25	19
4K903	3	26	5K287	13	4	7D728	27	15
4K903	11	1	5K287	31	31	7J088	29a	16
4K912	11	8	5K288	13	5	7J093	29a	3
4K928	19	56	5K288	31	32	7J095	29a	4
5C100	9	11	5K310	31	A	7J096	29a	19
5C392	9	25	5K319	19	46	7J127	9	1
5C392	23	40	5K714	31	15	7J140	3	18
5C392	29a	13	5K745	31	--	7J140	5	34
5C461	7	18	6C098	17	30	7J140	7	24
5C461	17	18	6C400	19	47	7J422	17	8
5C479	9	18	6C729	3	34	7J422	19	55
5C480	9	17	6D037	17	25	7J990	3	40
5C911	9	22	6D037	19	50	7J990	5	2
5C912	9	23	6D037	23	42	7J990	7	17
5D051	15	37	6D037	31	28	8C527	3	12

Part No.	Page No.	Index No.	Part No.	Page No.	Index No.	Part No.	Page No.	Index No.
8C527	5	28	9J311	3	1	9J458	3	28
8C527	7	33	9J324	9	6	9J464	5	1
8C527	19	60	9J325	9	7	9J464	7	4
8C528	9	24	9J330	9	14	9J474	27	1
8J309	21	12	9J331	9	13	9J477	27	3
8J790	9	29	9J336	15	29	9J559	15	21
8J792	9	28	9J337	15	30	9J579	27	3
8K349	3	35	9J338	15	35	9J617	29b	1
8K349	5	17	9J347	15	11	9J618	29b	2
8K349	7	13	9J349	15	4	9J881	23	35
8K350	3	36	9J350	15	5	9J895	15	30
8K350	5	16	9J351	15	14	9J896	15	5
8K350	7	12	9J353	3	29	9J897	15	29
8K597	23	33	9J364	31	8	9J898	15	4
8K659	13	23	9J364	31	22	9J901	15	13
8K660	13	24	9J367	17	32	9J903	17	7
8K661	13	6	9J367	19	32	9J903	19	7
8K663	13	22	9J377	17	12	9J906	17	31
8K664	3	43	9J378	17	15	9J907	17	22
8K664	5	13	9J379	17	14	9J908	17	1
8K664	7	14	9J385	17	4	9J908	25	28
8K664	13	2	9J388	17	10	9J909	7	37
8K783	11	10	9J388	19	10	9J909	23	47
8K885	3	42	9J391	17	16	9J912	21	53
9C078	3	23	9J392	19	37	9J912	23	53
9C078	5	38	9J395	19	38	9J913	7	22
9C078	7	39	9J399	15	24	9J914	7	21
9C078	21	29	9J400	9	8	9J917	5	6
9C078	23	29	9J405	3	5	9J917	7	3
9C078	31	25	9J405	5	21	9J922	21	3
9C078	29a	17	9J405	7	32	9J923	19	36
9C134	19	34	9J408	3	14	9J926	19	48
9D767	3	13	9J408	5	30	9J929	21	50
9D767	5	29	9J409	3	20	9J929	23	50
9D767	7	23	9J409	5	35	9J931	27	-
9D772	17	5	9J433	23	38	9J936	5	1
9D796	25	5	9J436	19	43	9J936	7	2
9D903	15	1	9J436	21	23	9J942	29a	2
9D904	15	2	9J437	9	4	9J962	27	3
9D923	15	3	9J438	27	-	9K260	15	5
9J301	5	36	9J440	9	12	9K261	15	5
9J301	7	20	9J440	11	4	9K262	15	5
9J302	5	12	9J442	5	5	9K265	15	14
9J302	7	11	9J442	7	5	9K269	15	11



Part No.	Page No.	Index No.	Part No.	Page No.	Index No.	Part No.	Page No.	Index No.
9K270	15	4						
9K271	15	4						
9K272	15	4						
9K328	3	7						
9K328	5	23						
9K328	23	46						
9K731	13	29						
9K732	13	30						
9K736	5	4						
9K739	31	1						
9K740	31	12						
9K741	31	3						
9K743	13	12						
9K750	13	7						
9K784	13	1						
9K787	13	28						
9K817	13	25						
9K822	13	11						
9K823	3	6						
9K823	5	22						
9K823	7	38						
9K823	23	45						
9K825	13	16						





Equipment from Landoll Corporation is built to exacting standards ensured by ISO 9001:2008 registration at all Landoll manufacturing facilities.

**LANDOLL CORPORATION**

1900 North Street

Marysville, Kansas 66508

(785) 562-5381

**800-428-5655 ~ WWW.LANDOLL.COM**



Copyright 2010. Landoll Corporation

"All rights reserved, including the right to reproduce this material or portions thereof in any form"

---