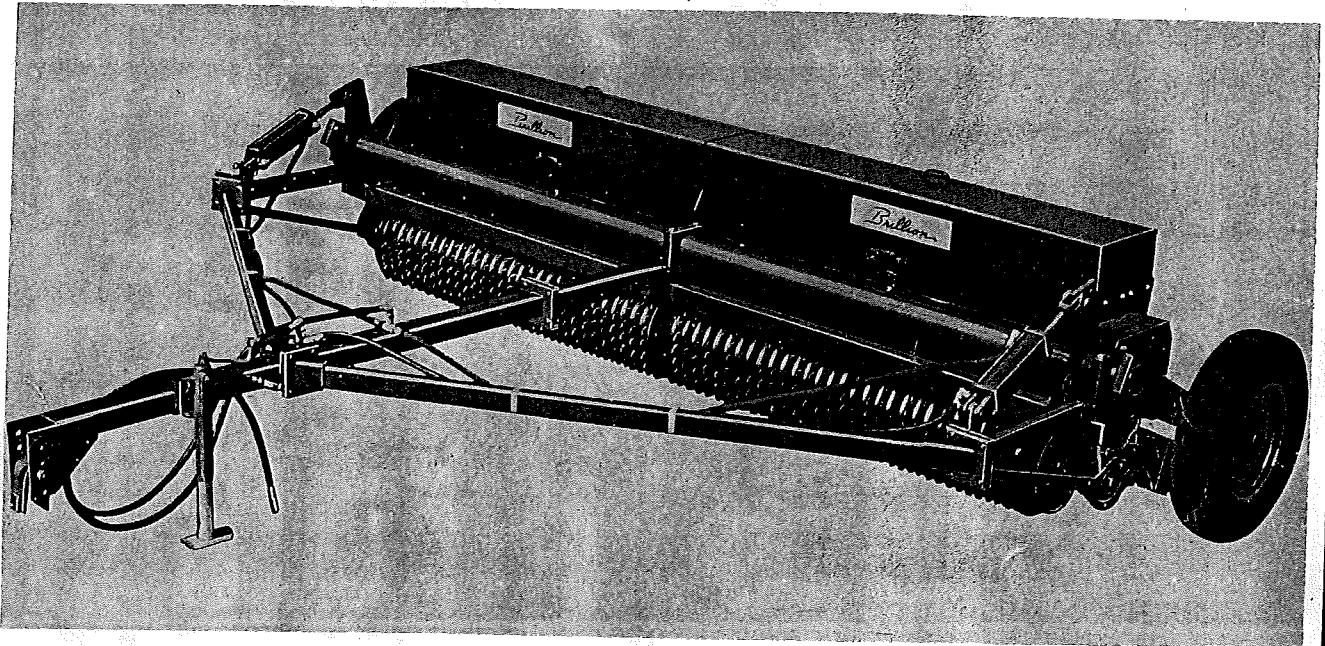


REPAIR PARTS CATALOG



SST-144

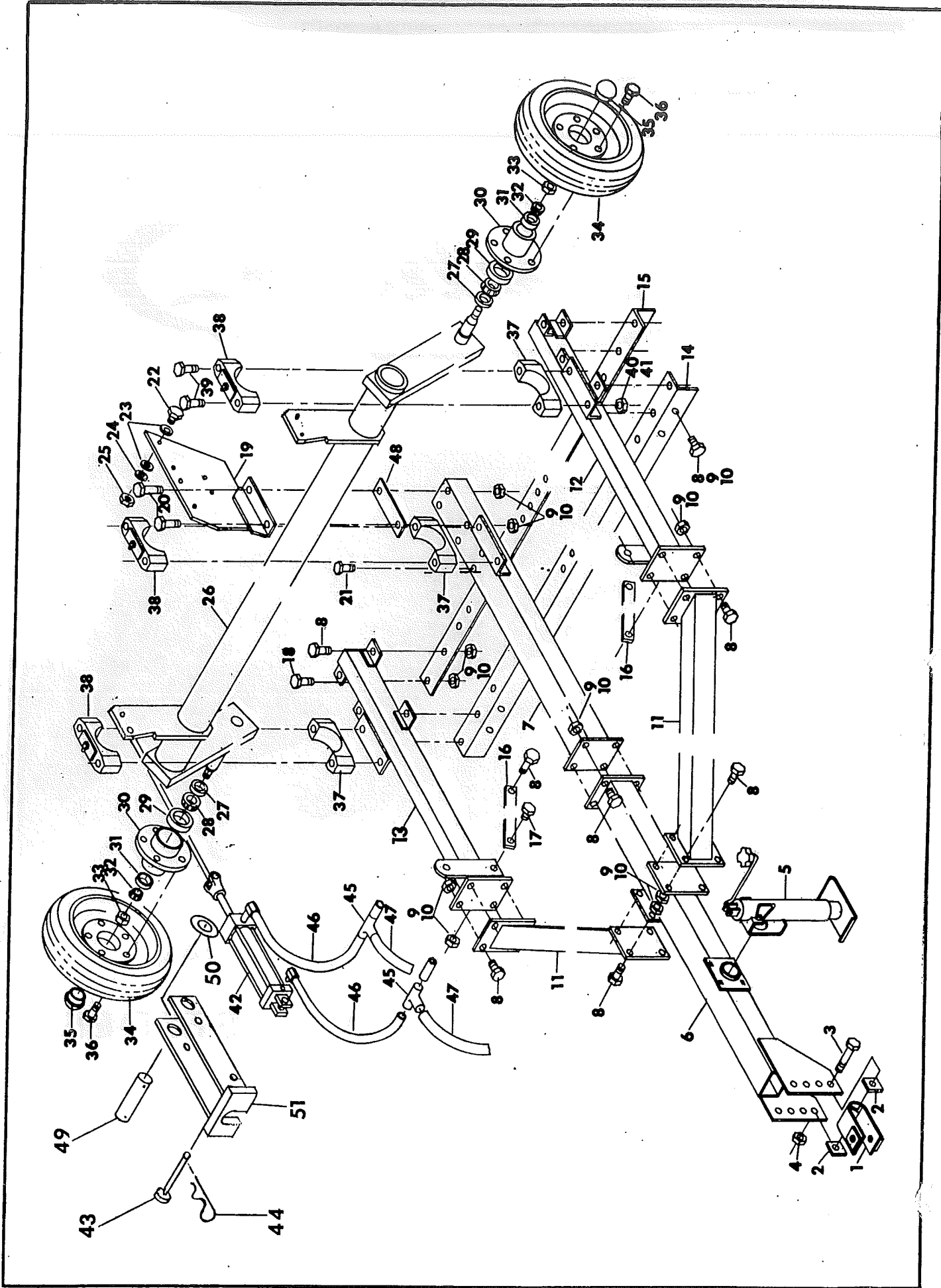
SSPT-144

SURE STAND

GRASS SEEDER

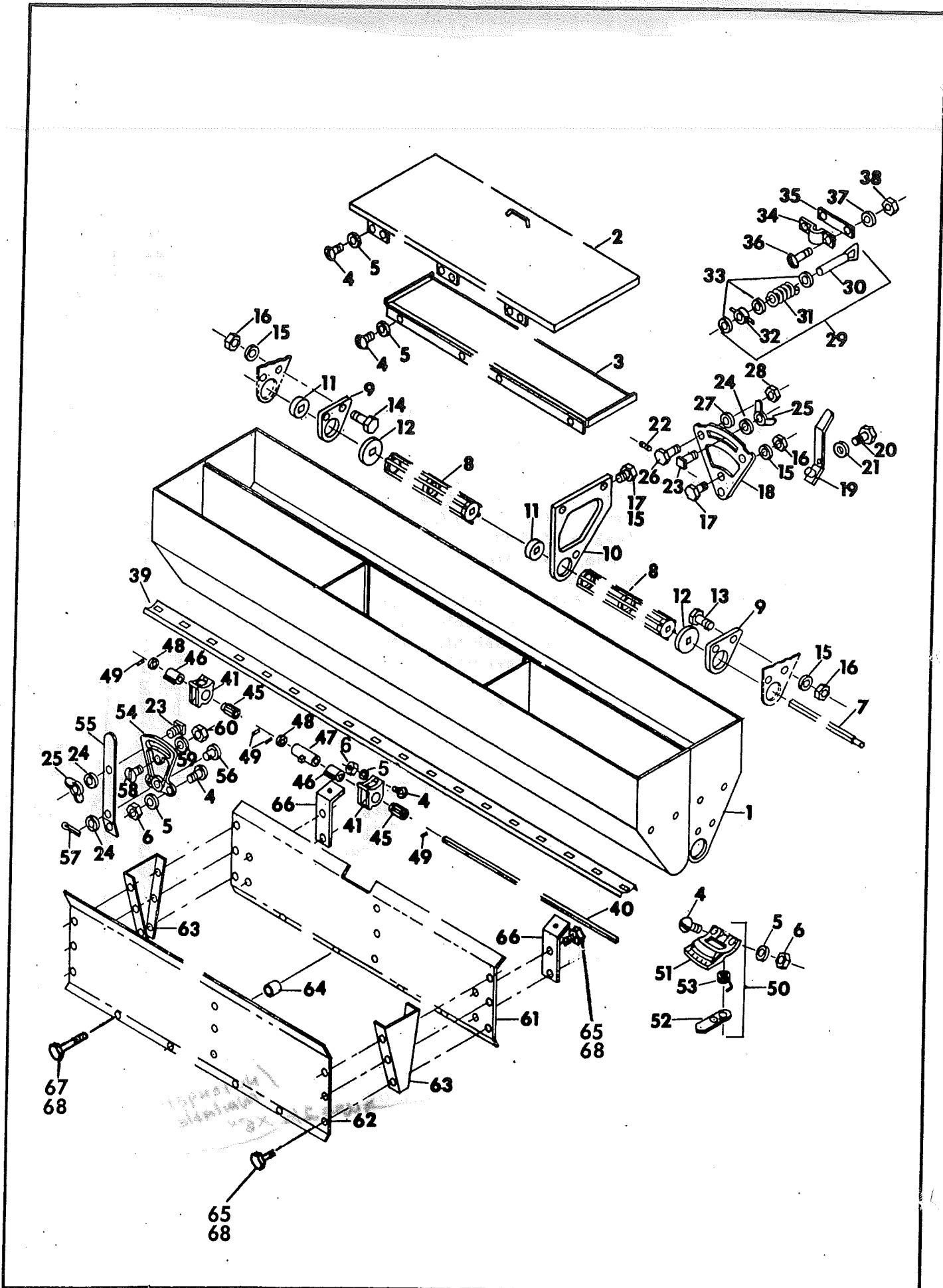
BRILLION IRON WORKS
BRILLION, WISCONSIN 54110

IMPORTANT! Repairs cannot be purchased retail direct from factory. Order through your Brillion dealer.



FRAME AND TRANSPORT ASSEMBLIES

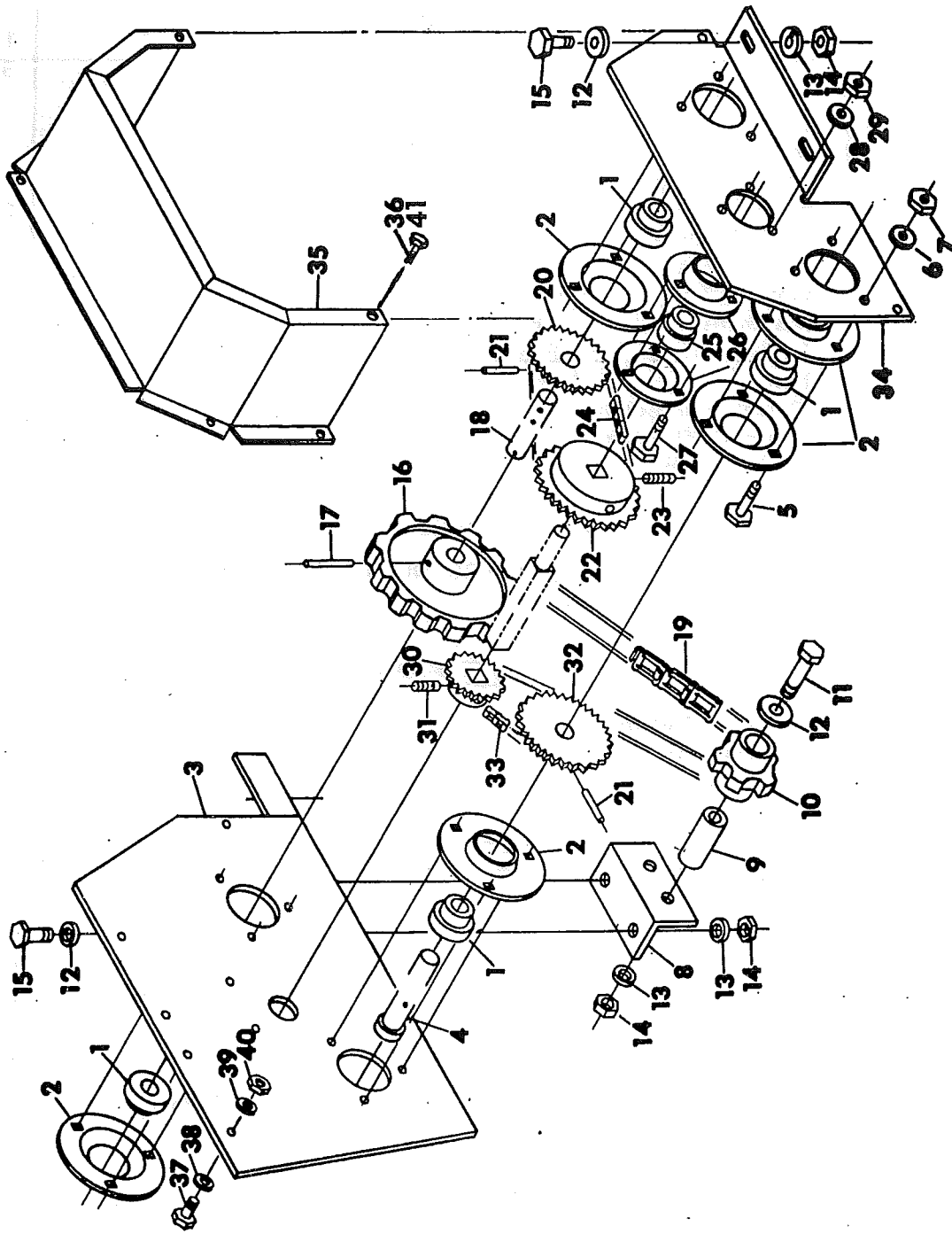
Index No.	Part No.	Description	No. Req'd.	Weight
1	2D-349	Clevis	1	
2	9D-768	Spacer	2	.4
3	6D-300	Capscrew, 3/4-10 x 6, Grade 5	1	
4	6C-729	Locknut, 3/4-10, Hex, Stover	1	
5	8D-391	Drawbar Jack	1	
6	9D-835	Drawbar Assembly, Front	1	95.0
7	9D-838	Drawbar Assembly, Rear	1	41.2
8	5D-51	Capscrew, 1/2-13 x 1-3/4, Grade 5	34	
9	1C-109	Lockwasher, 1/2 Med.	45	
10	1C-390	Hex Nut, 1/2-13 NC	45	
11	9D-820	Drawbar Brace	2	62.5
12	9D-827	Brace, L. H.	1	38.5
13	9D-828	Brace, R. H.	1	38.5
14	9D-840	Frame Angle, Front	1	81.75
15	9D-841	Frame Angle, Rear	1	81.75
16	9D-810	Strap	2	4.5
17	1D-237	Capscrew, 1/2-13 x 2, Grade 5	2	
18	1C-334	Capscrew, 1/2-13 x 1-1/4	4	
19	9D-848	Center Plate	1	15.4
20	3D-751	Capscrew, 1/2-13 x 4-1/2, Grade 5	2	
21	5D-335	Capscrew, 1/2-13 x 4, Grade 5	3	
22	8C-527	Capscrew, 3/8-16 x 1-1/2, Grade 5	4	
23	1C-182	Flat Washer, 3/8 Std.	8	
24	1C-183	Lockwasher, 3/8 Med.	4	
25	1C-277	Hex Nut, 3/8-16 NC	4	
26	9D-781	Transport Axle Assembly - Cpt.) 13/16	1	290.0
	9D-896	Transport Axle Assembly - Less hubs) Brg.	1	271.0
	1J-418	Transport Axle Assembly - Cpt.) 3/4	1	290.0
	1J-447	Transport Axle Assembly - Less hubs) Brg.	1	271.1
27	1D-273	Seal	2	.1
28	5C-480	Bearing Cone #LM48548	2	.2
29	5C-479	Bearing Cup #LM48510	2	.2
30	3D-870	Hub, 13/16 Brg.	2	8.6
	1J-390	Hub, 3/4 Brg.	2	8.6
31	3C-166	Bearing Cup #09195, 13/16 Brg.	2	.2
	5C-912	Bearing Cup #LM11910, 3/4 Brg.	2	.2
32	1D-274	Bearing Cone #09081, 13/16 Brg.	2	.3
	5C-911	Bearing Cone #LM11949, 3/4 Brg.	2	.3
33	3C-173	Slotted Nut 3/4-16, Light	2	.1
	3C-350	Cotter Pin, 5/32 x 1	2	
34	4C-129	Wheel - 15"	2	16.0
35	5C-908	Hub Cap, 13/16 Brg.	2	.1
	1J-463	Hub Cap, 3/4 Brg.	2	.1
36	5C-100	Wheel Bolt	10	.1
37	8D-734	Axle Bearing Assembly	3	2.1
38	7D-583	Bearing Cap Assembly	3	2.1
39	6D-301	Capscrew, 5/8-11 x 6-1/2, Gr. 5	6	
40	1B-166	Lockwasher, 5/8 Med.	6	
41	5C-461	Hex Nut, 5/8-11 NC, Hex Stover	6	
42	9D-762	Hydraulic Cylinder (includes pin & clips) AVAILABLE	2	
43	8D-382	Clevis Pin 1/2" x 4 Long <i>USE 1/2" X 8"</i>	2	
44	4C-856	Hair Pin Cotter	2	
45	4D-982	Tee Fitting	2	.75
46	9D-764	Hydraulic Hose Assembly 96" Long	4	3.0
47	6D-140	Hydraulic Hose Assembly 86" Long	2	2.5
48	1J-712	Strap	1	1.4
49	9D-294	Pin 1" x 4 Long	2	.9
50	1C-871	Flat Washer 1" S.A.E.	4	
51	7J-220	Cylinder Lockout	2	10.7



RIGHT AND LEFT HAND SEEDBOX ASSEMBLY

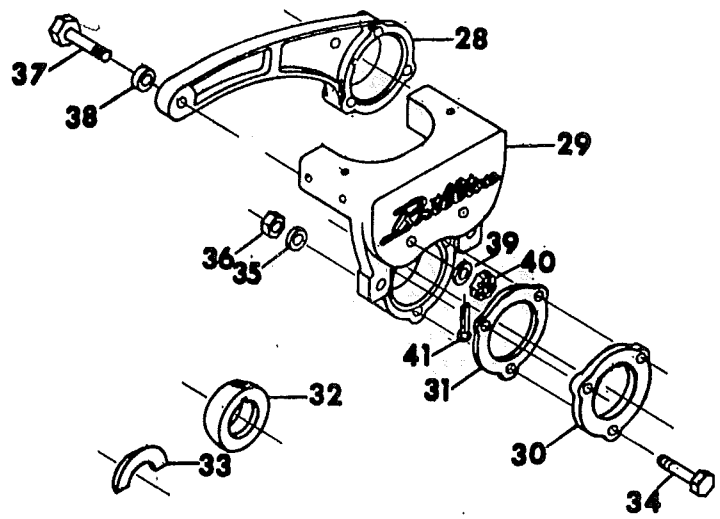
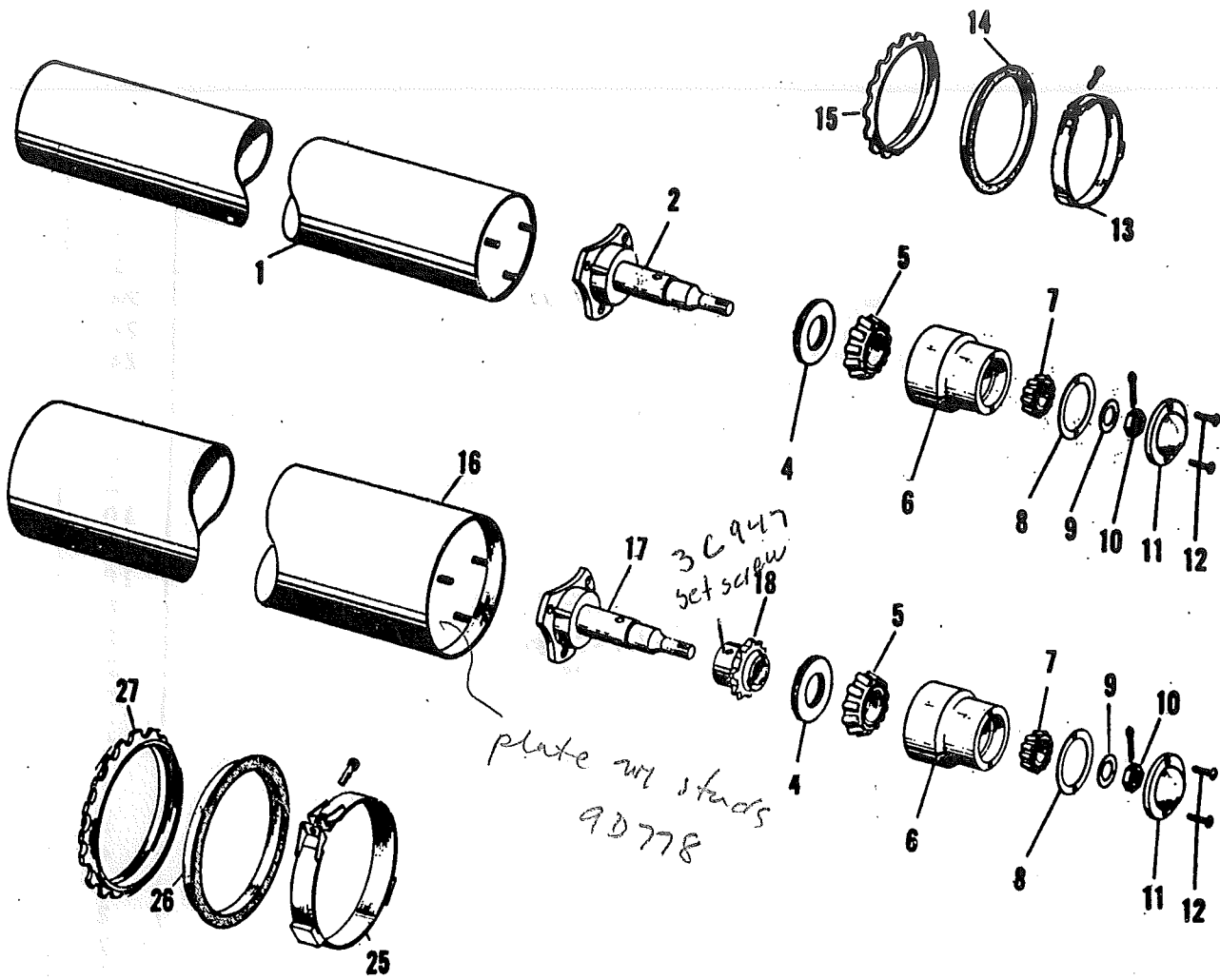
Index No.	Part No.	Description	No. Req'd.	Weight
		<u>Complete Assemblies</u>		
1	9D-790	9D-789 R.H. Seedbox Assembly 9D-805 L.H. Seedbox Assembly Fabricated Seedbox Includes box, cover, small seed cover and slide assembly	2	120.0
2	9D-860	Cover	2	22.0
3	9D-862	Small Seed Cover	2	9.5
4	4C-750	Machine Screw, 1/4-20 NC x 5/8" Long	68	
5	1C-354	Lockwasher, 1/4 Std.	68	
6	1C-355	Nut, 1/4-20 NC Hex	46	
7	9D-798	Agitator Shaft	2	8.6
8	9D-794	Agitator Cage Assembly	6	1.5
9	9D-793	Box End Bearing	4	1.3
10	1C-339	Intermediate Agitator Bearing	4	3.7
11	2C-808	Bushing	8	
12	2C-809	Washer	4	
*	1C-820	Cotter Pin, 3/16 x 1" Long	4	
13	9D-796	Capscrew, 5/16-18 NC x 1-1/2 Lg., Grade 5	4	
14	9D-797	Capscrew, 5/16-18 NC x 2-1/4 Lg., Grade 5	2	
15	1C-362	Lockwasher, 5/16 Std.	24	
16	1C-385	Nut, 5/16-18 NC Hex	8	
17	1C-237	Capscrew, 5/16-18 NC x 3/4 Lg.	18	
18	2C-662	Shift Plate	2	1.9
19	2C-830	Control Handle Assembly	2	1.0
20	1C-674	Pivot Bolt, 1/2-13 NC x 1" Long	2	
21	1C-120	Flat Washer, 1/2" Std.	2	
22	1C-235	Lockscrew, 1/4-20 NC x 1/2" Lg. Sq. Hd.	2	
23	1C-606	Handle Lock Bolt, 3/8-16 NC x 1" Lg., Sq. Hd.	4	
24	1C-182	Flat Washer, 3/8" Std.	6	
25	1C-217	Wing Nut, 3/8-16 NC	4	
26	1C-334	Capscrew, 1/2-13 NC x 1-1/4 Lg.	4	
27	1C-109	Lockwasher, 1/2 Std.	4	
28	1C-390	Nut, 1/2-13 NC Hex	4	
29	1C-199	Pivot Lock Assembly	4	
30	1C-192	Pivot Lock Stem		
31	1C-212	Spring		
32	1C-193	Pivot		
33	3C-708	Washer		
34	7D-938	Cover Lock Clip	4	
35	7D-937	Wear Strip	4	
36	1C-213	Screw, #10-24 NC x 1/2 Lg. Rd. Hd.	8	
37	1C-372	Lockwasher #10 Std.	8	
38	1C-386	Nut, #10-24 NC Hex	8	
39	9D-865	Slide Assembly	2	
40	9D-792	Seedmeter Shaft -Replaces RH, LH	2	2.8
41	4C-589 Feedcup Assembly	18	1.5

(Continued on following page)



DRIVE SPROCKET AND CHAIN ASSEMBLY

Index No.	Part No.	Description	No. Req'd.	Weight
1	1D-598	Bearing, 3/4 Bore	8	.45
2	1D-599	Flangette Stamping	16	.3
3	9D-843	Box End Plate R.H. Used on SST-144	1	16.6
	9D-846	Box End Plate L.H.	1	16.6
	1J-609	Box End Plate R.H. Used on SSPT-144	1	16.5
	1J-610	Box End Plate L.H.	1	16.5
4	9D-817	Drive Tube	2	.5
5	1C-237	Capscrew, 5/16-18 NC x 3/4 Long	24	
6	1C-362	Lockwasher, 5/16 Med.	24	
7	1C-385	Nut, 5/16-18 NC Hex	24	
8	9D-769	Angle	2	1.1
9	9D-770	Bushing - No longer Avail. 1" OD. x 2 5/16" Lg. - 3/32" wall	2	.35
10	1C-587	Idler Sprocket	2	1.5
11	5D-871	Capscrew, 1/2-13 NC x 3-1/2" Long, Gr. 5	2	
12	1C-120	Flat Washer, 1/2 Std.	10	
13	1C-109	Lockwasher, 1/2 Med.	10	
14	1C-390	Nut, 1/2-13 NC Hex	10	
15	1C-334	Capscrew, 1/2-13 NC x 1-1/4" Long	8	
16	9D-771	Sprocket, 12 Tooth - Order - 2K502	2	4.2
17	2D-894	Roll Pin, 1/4 Dia. x 2" Long	2	
18	9D-775	Jackshaft	2	1.13
19	9D-852	Chain #55 (Obsolete - Order 1J-991 & 1J-992)	2	2.4
*	1J-991	CA-550 Roller Chain - 29 Pitches Used on Machines	2	5.2
	1J-992	CA-550 Offset Connector Link After 5-1-1976		
20	9D-772	Sprocket 13 Tooth	2	.43
21	1C-659	Roll Pin, 1/4 Dia. x 1-1/2 Lg.	4	
22	9D-773	Sprocket, 25 Tooth DISCONTINUED	2	2.4
23	1C-737	Set Screw, 3/8-16 NC x 1/2 Long	2	
24	9D-774	Roller Chain #40 - 42 pitches	2	.7
	1C-476	Straight Connector Link	2	
25	1J-599	Bearing, 5/8 Bore	2	.32
26	9D-816	Flangette Stamping	2	.65
27	1C-229	Capscrew, 1/4-20 NC x 3/4 Long	6	
28	1C-354	Lockwasher, 1/4 Med.	6	
29	1C-355	Nut, 1/4-20 NC Hex	6	
30	9D-855	Sprocket, 14 Tooth	2	.56
31	5C-886	Set Screw, 5/16-18 NC x 3/8 Long	2	
32	9D-854	Sprocket, 23 Tooth	2	2.1
33	9D-856	Roller Chain #40 - 35 Pitches	2	.6
	3C-170	Offset Connector Link	2	
34	9D-760	Plate R.H.	1	6.2
	9D-761	Plate L.H.	1	6.2
35	9D-801	Shield R.H.	1	3.2
	9D-802	Shield L.H.	1	3.2
36	7J-140	Flanged Screw, 1/4-20 NC x 3/4" Long Hex Head	12	
37	4C-803	Capscrew, 3/8-16 NC x 1" Long	8	
38	1C-182	Flat Washer, 3/8 Std.	8	
39	1C-183	Lockwasher, 3/8 Med.	8	
40	1C-277	Nut, 3/8-16 NC Hex	8	
41	6J-150	Flanged Locknut, 1/4-20 NC	12	



557144

WHEEL AND AXLE ASSEMBLY

Index No.	Part No.	Description	Pcs. Req'd.	Weight
	9D-779	Rear Axle Assembly, Complete		189.8
	9D-776	Front Axle Assembly, Complete		333.5
1	9D-895	Rear Pipe & End Plate Assembly	1	156.6
2	8C-335	Rear Stub Shaft	2	12.0
4	8C-351	Seal (Trostel #WW228-140-6X)	4	.2
5	5C-913	Cone (Timken #LM67048)	4	.5
6	8C-334	Housing (Less Bearing Cups)	4	3.0
*	8C-341	Housing W/Bearing Cups		3.6
*	5C-914	Cup (large) Timken #LM67010	4	.3
*	5C-912	Cup (small) Timken #LM11910	4	.3
7	5C-911	Cone (Timken #LM11949)	4	.4
8	4C-132	Gasket	4	
9	5C-907	Washer	4	.1
10	5C-909	Slotted Nut	4	.2
11	4C-131	Cap	4	.6
12	1C-356	Screw	8	
13	2C-55	Rear Clamp Band	2	2.5
14	2C-524	Rear End Wheel	2	5.5
15	4C-689	Rear Sand Wheel	62	8.4
16	9D-894	Front Pipe & End Plate Assembly	1	293.0
17	8C-337	Front Stub Shaft	2	12.0
18	4C-580	Sprocket — 7 TOOTH	2	2.6
25	2C-62	Front Clamp Band	2	3.3
26	1C-968	Front End Wheel	2	7.6
27	4C-688	Front Sand Wheel	61	12.8
28	9D-812	Rear End Bracket L. H.	1	17.5
	9D-813	Rear End Bracket R. H.	1	17.5
29	9D-787	End Bracket — NLA	2	38.0
30	1C-837	Clamp Ring	4	4.8
31	6D-910	Shim	14	
32	4C-28	Adaptor Ring	4	4.2
33	4C-27	Lock Ring	8	1.0
34	7D-247	Capscrew, 5/8-11 NC x 3-3/4" Long	12	
35	1B-166	Lockwasher, 5/8 Med.	12	
36	1C-392	Nut, 5/8-11 NC Hex	12	
37	2C-296	Arm Bolt, 3/4-10 NC x 4-1/2" Long	2	
38	1C-133	Flat Washer, 3/4 Std. Flat	2	
39	2C-458	Flat Washer, 3/4 S.A.E. Flat	2	
40	1C-379	Nut, 3/4-10 NC Hex Slotted	2	
41	1C-205	Cotter Pin, 5/32 x 1-1/2" Long	2	