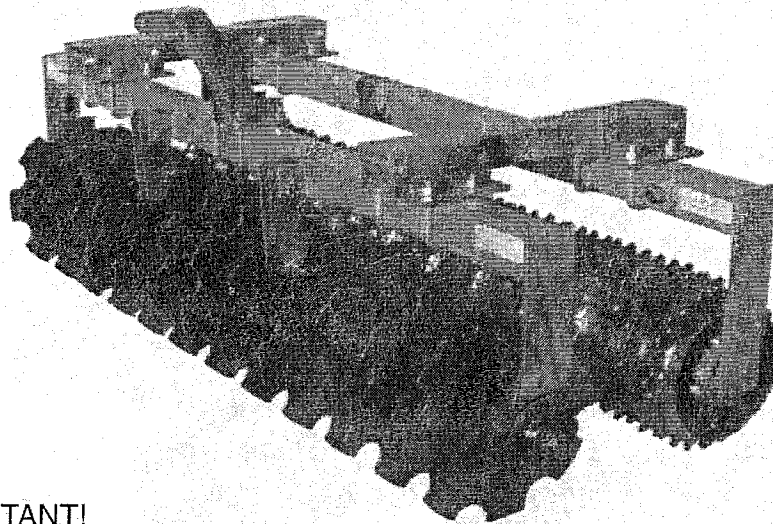


**OPERATOR'S MANUAL
REPAIR PARTS CATALOG**

Brillion

Seedbed Mulch Tucker

**MODELS: SMT-8
SMT-6**



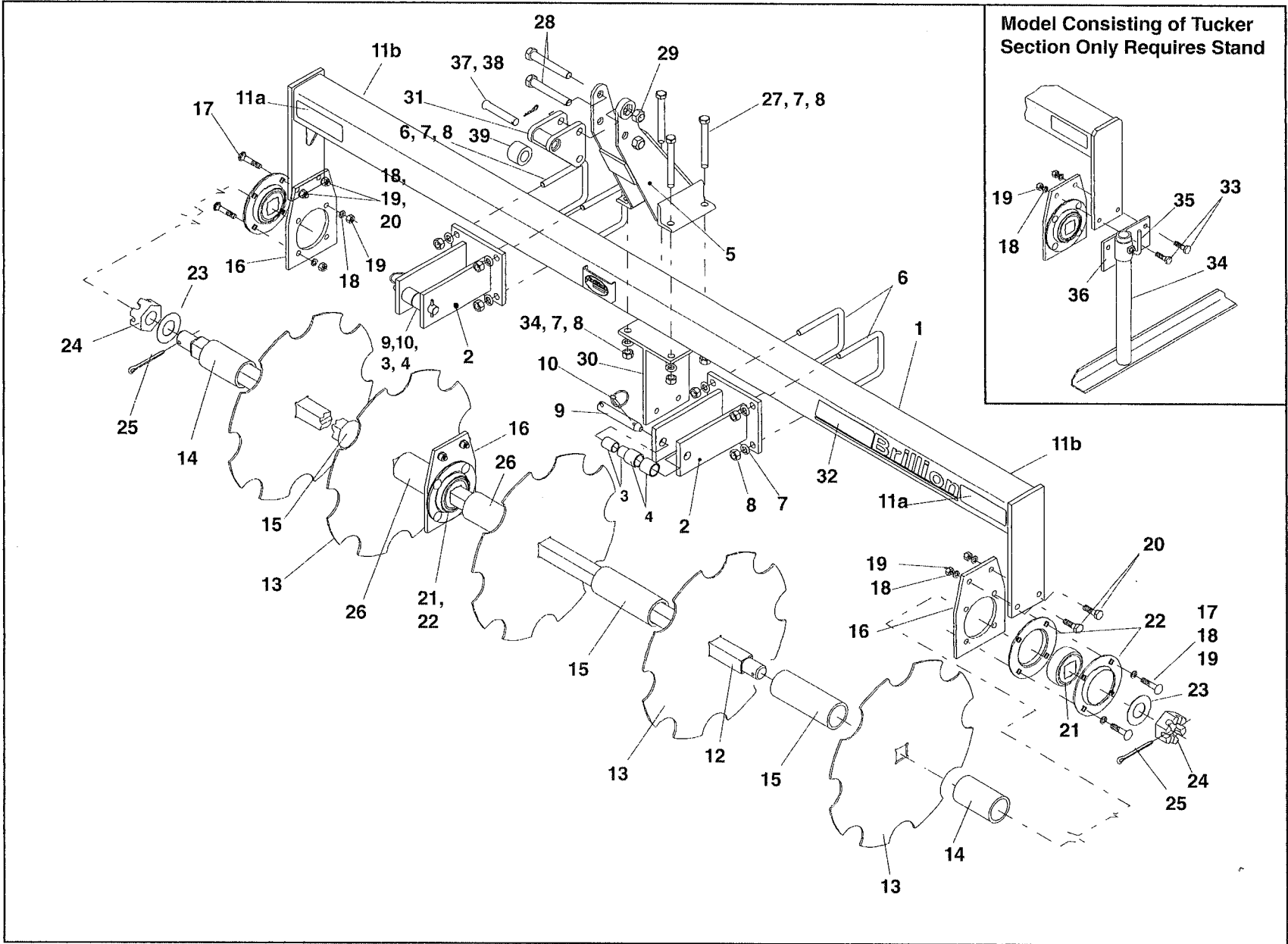
IMPORTANT!

Repairs cannot be purchased
retail direct from factory.
Order through your Brillion dealer.

**BRILLION IRON WORKS, INC.
BRILLION, WISCONSIN 54110**

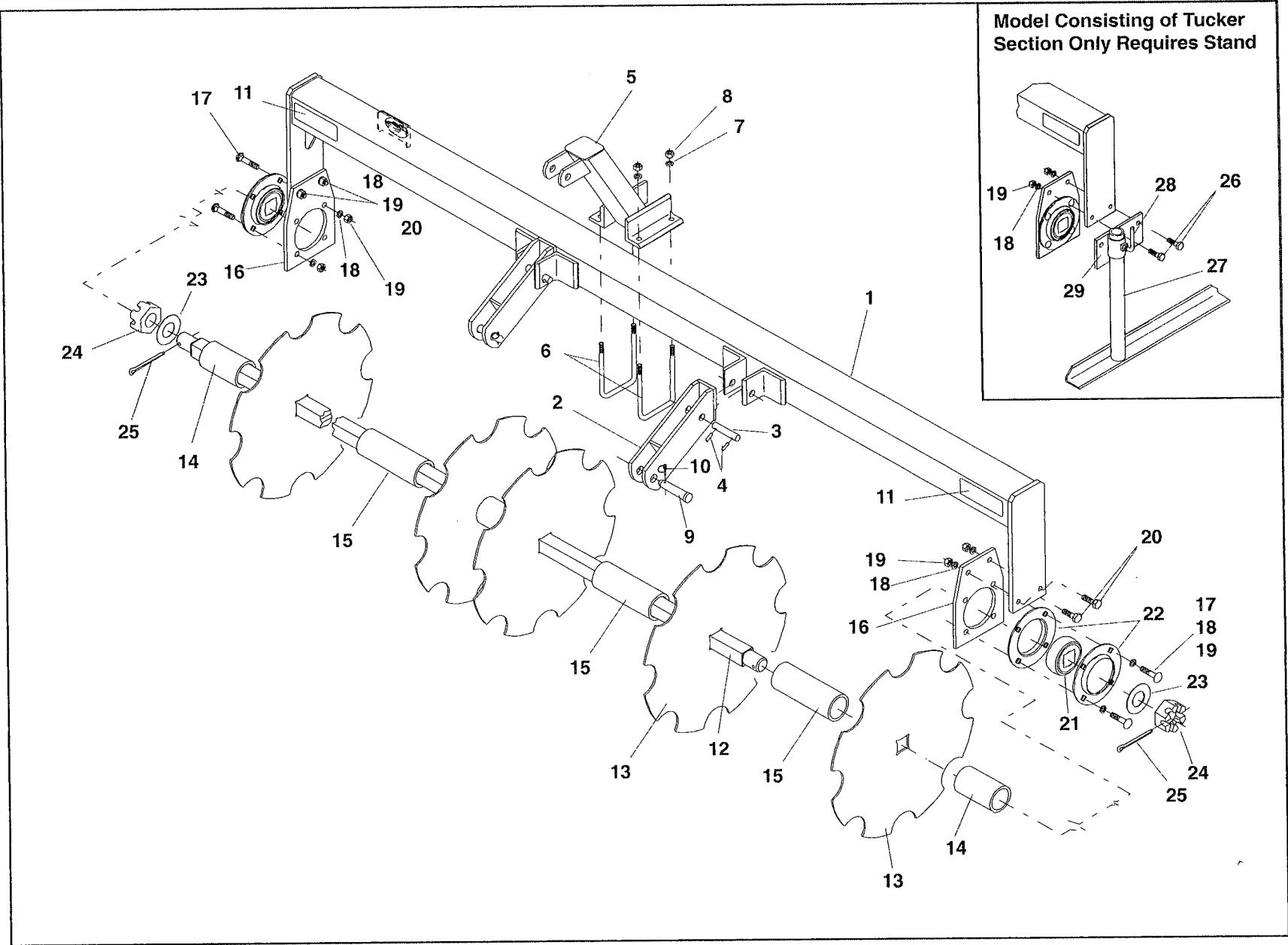
200rev902

6K600



COULTER ASSEMBLY [SMT8 Models -from February 2001]

Index No.	Part No.	Description	No. Used	Weight
1	6K982	Frame Weldment - 8'	1	119
	9J841	Frame Weldment - 6'	1	96
2	6K983	Hitch Bracket	2	18.5
3	7K227	Sleeve - 1 1/8 OD x 29/32" ID x 1 13/32" Long	4	.14
4	7K226	Sleeve - 1 7/16" OD x 1 1/8" ID x 1 13/32" Long	4	.23
5	6K977	Mast	1	15
6	9D989	U-Bolt, 5/8"	2	1.4
7	1B166	Lockwasher, 5/8"	4	-
8	1C392	Nut, 5/8"	4	-
9	3J910	Clevis Pin, 7/8" x 3 1/2"	2	.6
10	5D110	Klik-Pin	2	.1
11a	2J431	Decal, Reflective Amber	2	-
11b	2J430	Decal, Reflective Red	2	-
	6K975	Coulter Assembly -8' (Shown) [Items 12-26]	1	334
	6K622	Coulter Assembly -6'	1	260
12	2K539	Square Shaft, 8'	1	66.22
	6K623	Square Shaft, 6'	1	50.9
13	2K540	20" Notched Coulter	12	14.58
14	2K541	Spacer, 4.914"	2	3.13
15	2K542	Spacer, 7 13/16"	10	4.98
16	2K543	Plate	3	4.31
17	9J559	Carriage Bolt	12	.12
18	1C109	Lockwasher	12	-
19	1C390	Nut	12	.04
20	8C527	Capscrew, 1/2-13 NC x 1 1/2" gr. 5	6	.1
21	3J131	Bearing	3	3.0
22	3K045	Bearing Flange	6	
23	7D795	Washer	2	-
24	2J716	Slotted Nut	2	.1
25	6D049	Cotter Pin	2	-
26	6K976	Spacer, 3 1/4" Long	2	2
27	8C527	Capscrew, 1/2-13 NC x 1 1/2" gr. 5	4	.1
28	2D488	Capscrew, 3/4-10 NC x 5"	2	
29	6C729	Locknut, 3/4"	2	
30	6K973	Center Bracket	1	11.2
31	7K107	Float Link	1	5\
32	4K036	Decal, "Brillion"	1	-
33	8C527	Capscrew, 1/2-13 NC x 1 1/2" gr. 5	2	.1
34	9J850	Stand Weldment	1	5.8
35	9J851	Screw	1	.1
36	9J845	Bracket	1	2.2
37	5C077	Clevis Pin, 3/4"	1	.13
38	6J448	Hairpin Cotter	1	
39	6K984	Sleeve, 2" OD x 1 1/8" ID x 1 13/32" Long		



COULTER ASSEMBLY -SMT6 Models [& SMT8 prior to February 2201]

Index No.	Part No.	Description	No. Used 8' / 6'	Weight
1	9J843	Frame Weldment - 8'	1	119
	9J841	Frame Weldment - 6'	1	96
2	9J847	Hitch Weldment	2	9
3	9J848	Pin	2	.5
4	1D604	Roll Pin	4	-
5	9J846	Mast	1	15
6	9D989	U-Bolt, 5/8"	2	1.4
7	1B166	Lockwasher, 5/8"	4	-
8	1C392	Nut, 5/8"	4	-
9	9J849	Clevis Pin, 7/8" x 3 1/2"	2	.6
10	5D110	Klik-Pin	2	.1
11	2J431	Decal, Reflective Amber	2	-
	2K992	Coulter Assembly -8'	1	334
	6K622	Coulter Assembly -6'	1	260
12	2K539	Square Shaft -8'	1	66.22
	6K623	Square Shaft -6'	1	50.9
13	2K540	20" Notched Coulter	12 / 9	14.58
14	2K541	Spacer, 4.914"	2	3.13
15	2K542	Spacer, 7 13/16"	11 / 8	4.98
16	2K543	Plate	2	4.31
17	9J559	Carriage Bolt	8	.12
18	1C109	Lockwasher	8	--
19	1C390	Nut	8	.04
20	1C334	Capscrew, 1/2-13 NC x 1 1/4" gr. 5	4	.1
21	3J131	Bearing	2	3.0
22	3K045	Bearing Flange	4	
23	7D795	Washer	2	-
24	2J716	Slotted Nut	2	.1
25	6D049	Cotter Pin	2	-
26	8C527	Capscrew, 1/2-13 NC x 11/2" gr. 5	2	.1
27	9J850	Stand Weldment	1	5.8
28	9J851	Screw	1	.1
29	9J845	Bracket	1	2.2

PULVERIZER ASSEMBLY

Index No.	Part No.	Description	No. Used 8' / 6'	Weight
1	6K982	Frame Weldment - 8'	1	119
	9J841	Frame Weldment - 6'	1	96
2	2K544	Tube	2	24.9
3	2K545	Angle	8	6.8
4	9D989	U-Bolt, 5/8-11 NC x 4 11/16 Ctrs. x 5 5/8" Deep	8	1.4
5	1B166	Lockwasher, 5/8"	16	-
6	1C392	Nut, 5/8-11 NC	16	-
7	6D301	Machine Bolt, 5/8-11 NC x 6 1/2" gr 5	8	
8	5C461	Stover Nut, 5/8-11 NC	8	.07
9	1C334	Capscrew, 1/2 x 11/4" gr. 5	2	.1
10	1C109	Lockwasher, 1/2"	4	-
11	9D864	Drilled Bolt, 5/8 x 3-1/2"	4	.4
12	4D529	Slotted Nut, 5/8"	2	.1
13	2C864	Cotter Pin, 1/8 x 1"	2	-
	2K994	Mounting Plate Assembly (Items 5 & 11-15)	2	5.8
14	2K546	Mounting Plate Weldment	2	4.4
15	9D669	Axle Mount (Cast Iron)	2	.9
16	9C016	Bearing (Square Bore)	2	1.7
17	5J375	Clamp Assembly - Complete (items 10 & 18-21)	2	4.5
18	9C031	Axle Clamp (Cast Iron)	2	3.7
19	9D673	U-Bolt, 1/2"	2	.7
20	1C390	Nut, 1/2"	4	.04
21	2D535	Set Screw, 1/2"	4	-
22	8C988	Wheel, 16" Notched (PPM Models)	24 / 18	31
23	9J874	Axle Assembly - 8' incl. Bearings	1	87
	9J875	Axle Assembly - 6' incl. Bearings	1	69
24	9C014	Bearing Housing (Casting Only)	2	7
25	2J430	Reflective Decal - Red	2	-
26	4K036	Decal, "Brillion"	2	-