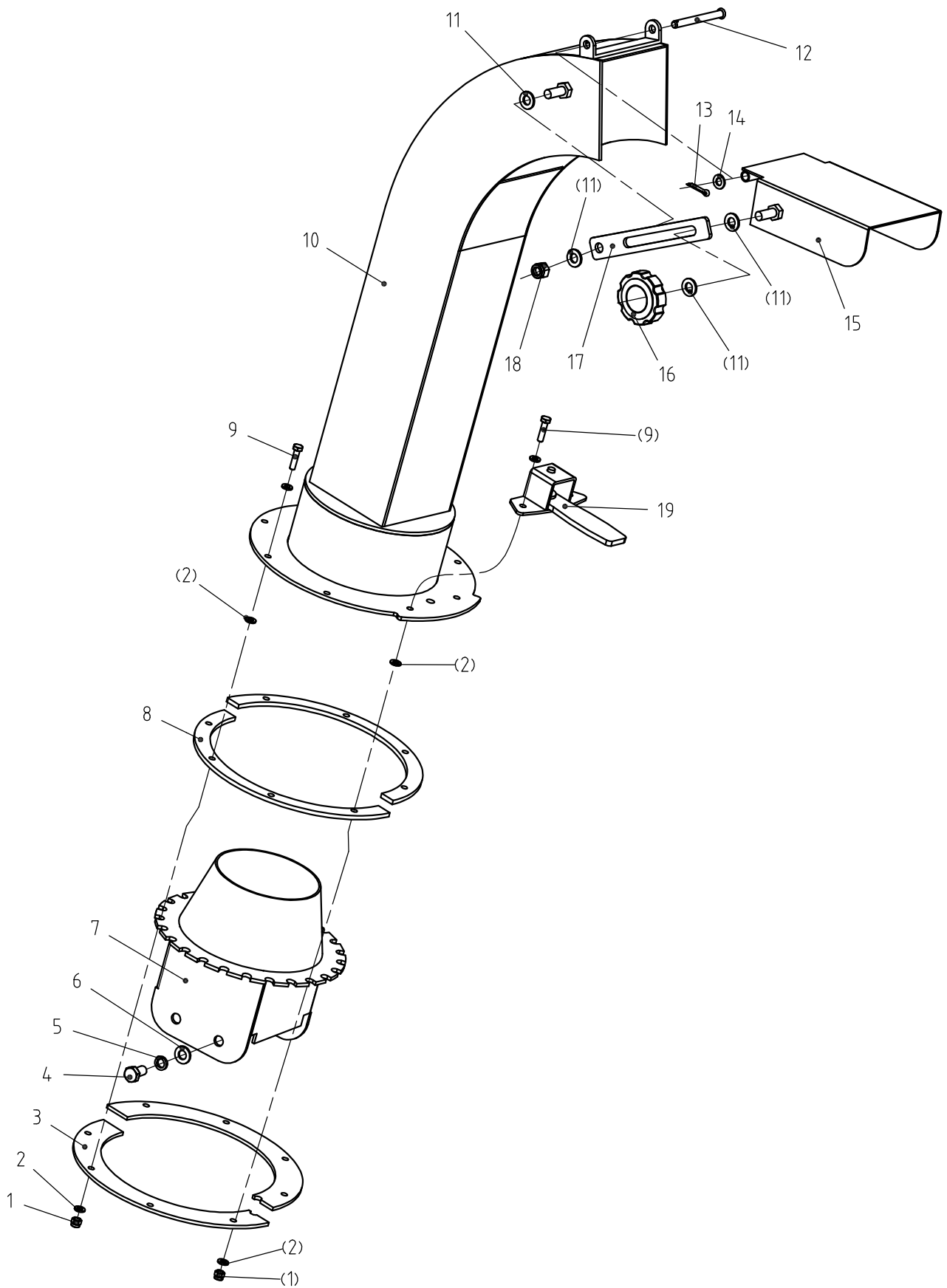


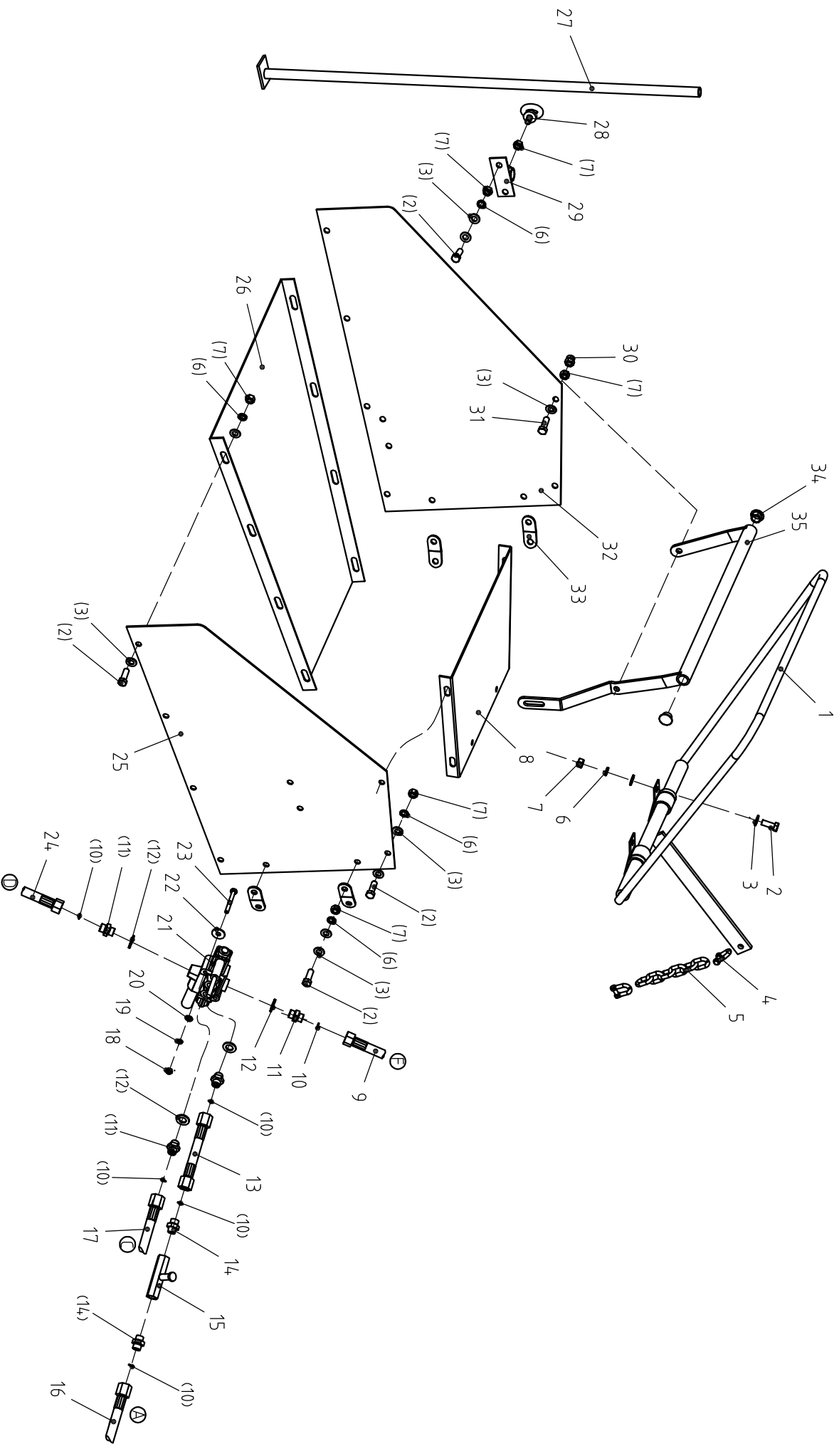
1. Discharge Chute Parts



1. Discharge Chute Parts

Ser.No.	Part No.	Name & Specification		Qty	Remarks
1-1	NN6	Nylon Nut M6	尼龙锁紧螺母M6	8	
1-2	PW6	Plain Washer 6	平垫6	18	
1-3	WC-8H-124	Lock Plate	固定板	2	
1-4	HBF10A12	Bolt M10*12	六角螺栓M10*12	4	
1-5	SW10	Spring Washer 10	弹垫10	4	
1-6	PW10	Plain Washer 10	平垫10	4	
1-7	WC-8H-021	Hood Capture	出料口焊合件	1	
1-8	WC-8H-123	Spacer Ring	隔板	2	
1-9	HBF6A25	Bolt M6*25	六角螺栓M6*25	8	
1-10	WC-8H-022	Dischager Chute	导向管焊合件	1	
1-11	PW10	Plain Washer 10	平垫10	4	
1-12	BP8A125	B Pin 8*125	B型销轴8*125	1	
1-13	STP3A15	Split Washer3*15	开口销3*15	1	
1-14	PW8	Plain Washer 8	平垫8	1	
1-15	WC-8H-023	Guiding Chute	调节板焊合件	1	
1-16	BX42S.114	Rotary Knob	把手螺母M10	1	
1-17	WC-8H-111	Adjust Plate	调节板	1	
1-18	NN10	Nylone Nut	锁紧螺母M10	1	
1-19	BX42.018	Hood Latch	锁座焊合件	1	

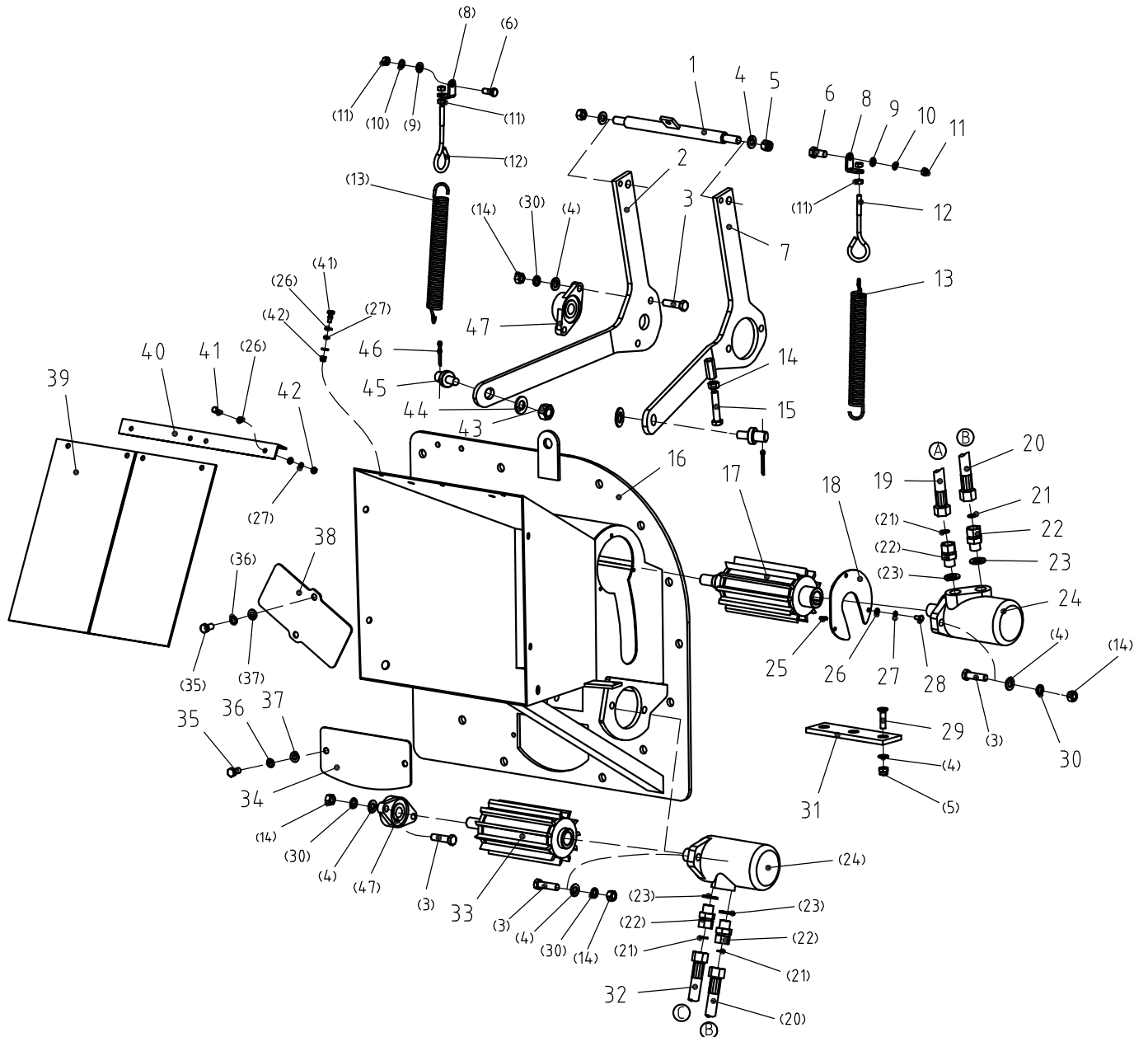
2. Feeding Hopper Parts



2. Feeding Hopper Parts

Ser.No.	Part No.	Name & Specification		Qty	Remarks
2-1	WC-8H-020	Pull Bar	滚筒拉杆焊合件	1	
2-2	HBF12A30	Bolt M12*30	六角螺栓M12*30	24	
2-3	PW12	Plain Washer 12	平垫12	50	
2-4	DS8	D Shackle 8	D型扣 8	2	
2-5	C8A24	Chain 8*24	8号链条8*24	6	
2-6	SW12	Plain Washer 12	弹垫12	24	
2-7	HN12	Nut M12	六角螺母M12	27	
2-8	WC-8H-107	Upper Hopper Plate	进料口上板	1	
2-9	WC-8H-133	Value Oil Return Hose	阀回油管	1	
2-10	OR12A8	O Ring 12*8*2	O型圈12*8	4	
2-11	LSP-22T-102	Hose Joint	接头（一）	4	
2-12	BW18	Boned Washer 18	组合垫圈18	4	
2-13	WC-8H-134	Motor Hose(short)	马达进油管（短）	1	
2-14	WC-8H-130	Throttle Joint	节流阀接头	2	
2-15	KC-03	Throttle	单向节流阀	1	
2-16	WC-8H-134	Motor Hose(long)	马达进油管（长）	1	L-630
2-17	WC-8H-135	Motor Oil Return Hose	马达回油管	1	
2-18	HN8	Nut M8	六角螺母M8	2	
2-19	SW8	Spring Washer 8	弹垫8	2	
2-20	PW8	Plain Washer 8	平垫8	2	
2-21	WCVALUE	Value	阀	1	
2-22	BPW8	Big Plain Washer 8	大平垫8	2	
2-23	HB8A70	Bolt M8*70	六角螺栓M8*70	2	
2-24	WC-8H-132	Pump Hose	泵出油管	1	
2-25	WC-8H-109	Right Hopper Plate	进料口右侧板	1	
2-26	WC-8H-110	Bottom Hopper Plate	进料口下板	1	
2-27	WC-8H-030	Supporter	撑脚焊合件	1	
2-28	BE12	B Eyebolt M12	B型吊环螺钉M12	1	
2-29	WC-8H-029	Supporter Holder	撑脚套焊合件	1	
2-30	NN12	Nylone Nut M12	尼龙锁紧螺母m12	2	
2-31	HBF12A45	Bolt M12*50	六角螺栓M12*50	2	
2-32	WC-8H-108	Left Hopper Plater	进料口左侧板	1	
2-33	WC-8H-121	Joint Plate	连接板	4	
2-34	WC-8H-128	Rubber Cap	橡胶堵头	2	
2-35	WC-8H-032	Safty Bar	控制把手焊合件	1	

3. Feeding System Parts



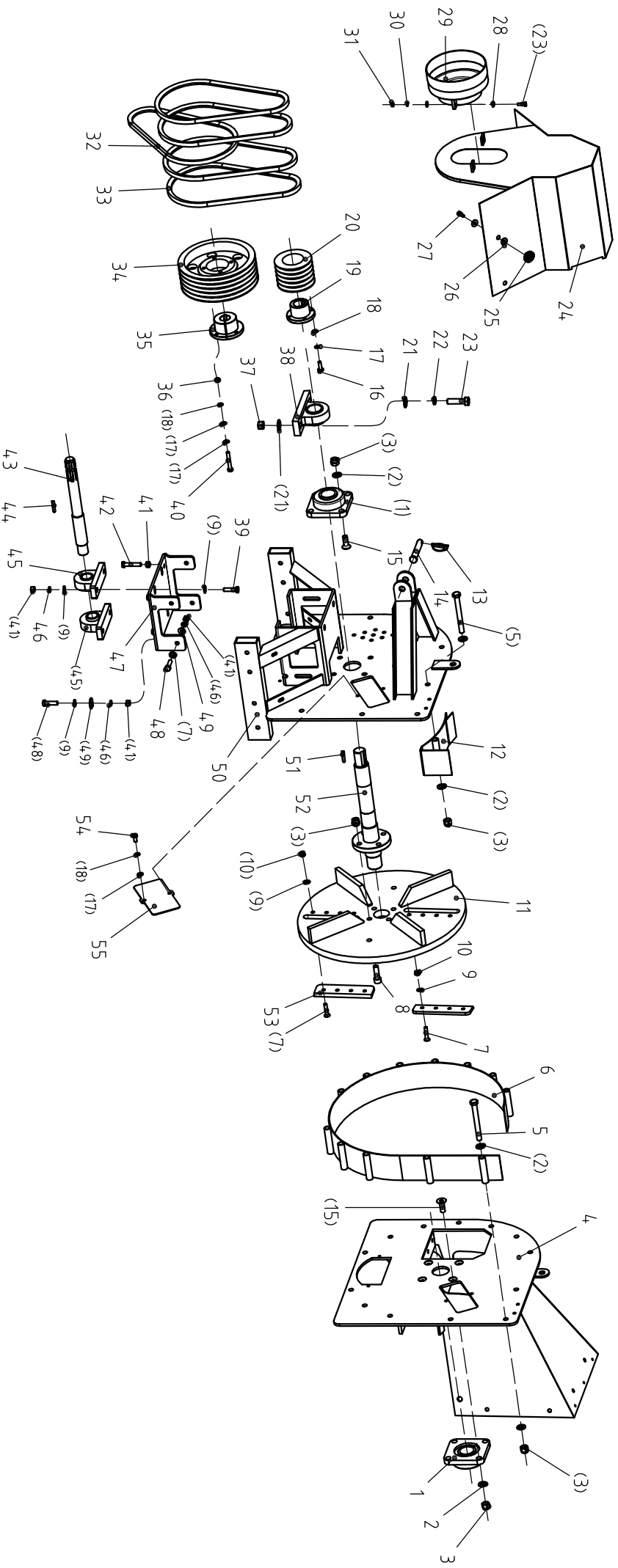
3.Feeding System Parts

Ser.No.	Part No.	Name & Specification		Qty	Remarks
3-1	WC-8H-033	Connect Shaft	滚筒连接轴焊合件	1	
3-2	WC-8H-034	Rotor Left Plate	上滚筒左安装板	1	
3-3	HBF12A45	Bolt M12*45	六角螺栓M12*45	8	
3-4	PW12	Plain Washer 12	平垫12	13	
3-5	NN12	Nylone Nut M12	尼龙锁紧螺母M12	5	
3-6	HBF8A30	Bolt M8*30	六角螺栓M8*30	2	
3-7	WC-8H-019	Roller Left Plate	上滚筒右安装板	1	
3-8	WC-8H-119	Spring Plate	弹簧拉板	2	
3-9	PW8	Plain Washer 8	平垫8	2	
3-10	SW8	Spring Wsher 8	弹垫8	2	
3-11	HN8	Nut M8	六角螺母M8	6	
3-12	BX62.113	Hook Bolt	钩型螺钉	2	
3-13	WC-8H-127	Rotor Spring	滚筒拉簧	2	
3-14	HN12	Nut M12	六角螺母M12	10	
3-15	HBF12A60	Bolt M12*60	六角螺栓M12*60	2	
3-16	WC-8H-012	Hopper Weldmwent	进料口焊合件	1	
3-17	WC-8H-018	Upper Roller	上滚筒焊合件	1	
3-18	WC-8H-122	Rotor Cap	滚筒盖板	1	
3-19	WC-8H-134	Motor Inlet Hose (long)	马达进油管 (长)	1	L=630
3-20	WC-8H-134	Motor Connect Hose	马达串联油管	1	
3-21	OR14A11A1.5	O Ring 14*11*1.5	O型圈14*11*1.5	4	
3-22	WC-8H-136	Motor Jonit	马达接头	4	
3-23	BWG1/2	Bonded Washer1/2	组合垫圈1/2	4	
3-24	BMP160-2AM	Hydraulic Motor	液压马达	2	
3-25	KC8A50	Key 8*50	平键8*50	2	
3-26	PW6	Plain Washer 6	平垫6	14	
3-27	SW6	Spring Washer 6	弹垫6	10	
3-28	HBF6A15	BoltM6*15	六角螺栓M6*15	3	
3-29	HHSS12A40	Hexagon Socket Countersunk Head Screws	内六角沉头螺栓M12*40	3	
3-30	SW12	Spring Washer 12	弹垫12	8	
3-31	WC-8H-125	Bed Knife	定刀	1	
3-32	WC-8H-135	Motor Returen Hose	马达回油管	1	
3-33	WC-8H-017	Lower Rotor	下滚筒焊合件	1	
3-34	WC-8H-118	Chipper Clean Cap	盖板	1	
3-35	HBF10A12	Blot M10*12	六角螺栓M10*12	4	
3-36	SW10	Spring Washer 10	弹垫10	4	
3-37	PW10	Plain Washer 10	平垫10	4	

3.Feeding System Parts

3-38	WC-8H-117	Plate for Knife	换刀板	1	
3-39	WC-8H-116	Flap	挡料板	2	
3-40	WC-8H-115	Flap Holder	挡料板安装板	1	
3-41	HBF6A20	Bolt M6*20	六角螺栓M6*20	7	
3-42	HN6	Nut M6	六角螺母M6	7	
3-43	HN14	Nylone Nut M14	尼龙锁紧螺母M14	2	
3-44	BPW14	Big Plain Washer14	大平垫14	2	
3-45	WC-8H-120	Pin	转轴	2	
3-46	STP4	Split Pin 4	开口销4	2	
3-47	UCFL205	Bearing Block UCFL205	轴承座	2	

3. Transmission Parts



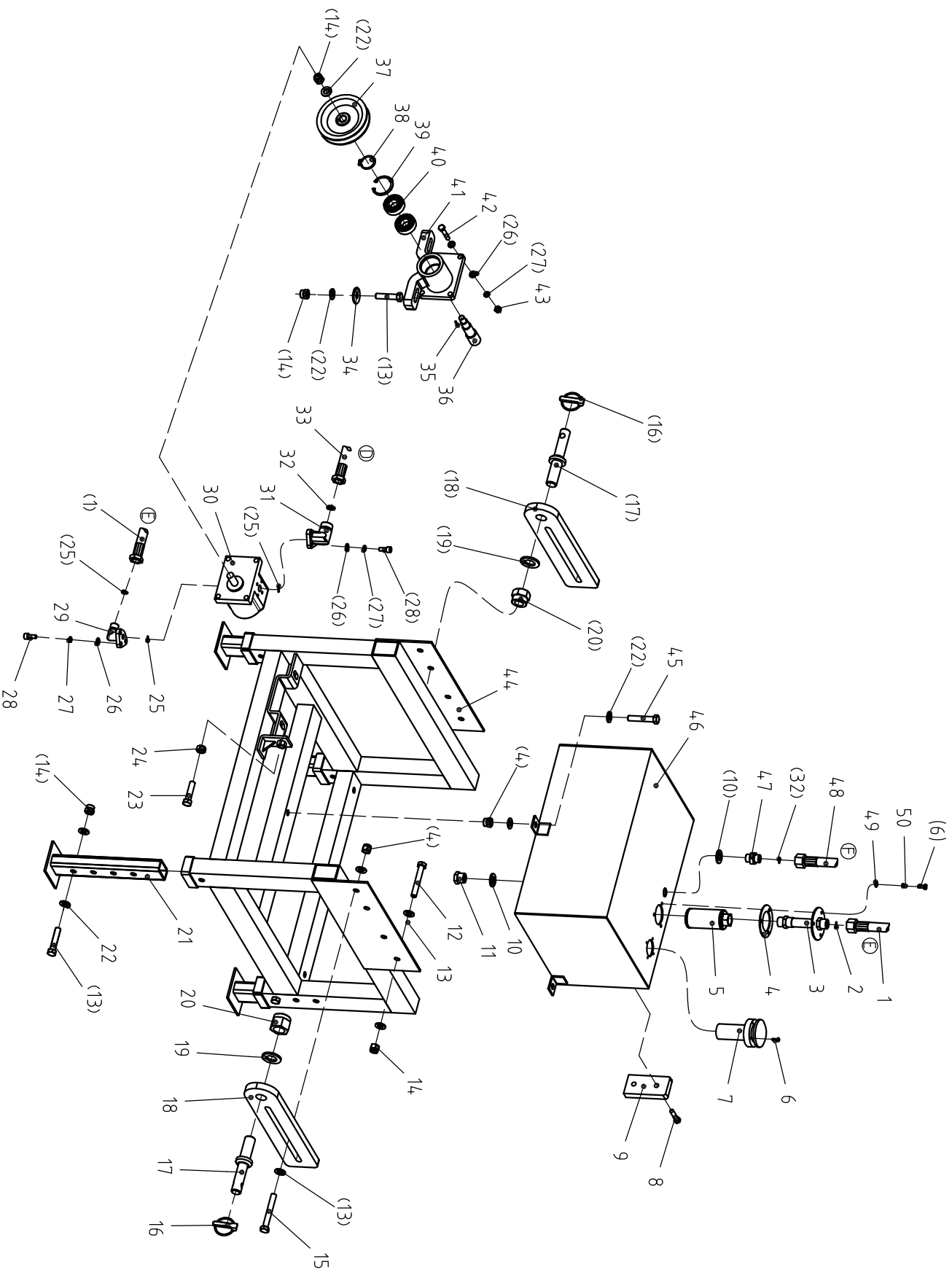
4. Transmission Parts

Ser.No.	Part No.	Name & Specification		Qty	Remarks
4-1	UCP210	Bearing Block UCP210	轴承座UCP210	1	
4-2	PW16	Plain Washer 16	平垫16	34	
4-3	NN16	Nylon Nut M16	尼龙锁紧螺母M16	25	
4-4	WC-8H-012	Hopper	进料口焊合件	1	
4-5	HB16A150	Bolt M16*150	六角螺栓M16*150	13	
4-6	WC-8H-026	Housing	保护罩焊合件	1	
4-7	HHSS12A40	hexagon Countersunk Head Bolt	内六角沉头螺栓M12*40	8	
4-8	SHSH16A60	Hexagon Socket Head Bolt	内六角圆柱体螺栓M16*60	4	
4-9	PW12	Plain Washer	平垫12	22	
4-10	NN12	Nylon Nut	尼龙锁紧螺母M12	8	
4-11	WC-8H-014	Rotor Disc	刀盘焊合件	1	
4-12	WC-8H-027	Top Housing Part	卡板焊合件	1	
4-13	SP11	Safty Pin 11	锁销组合件 11	1	
4-14	EF175-124	Upper Pin	上悬挂销	1	
4-15	HHSS16A45	Hexagon countersunk head bolt	内六角沉头螺栓M16*45	8	
4-16	HBF10A30	Bolt M10*30	六角螺栓M10*30	4	
4-17	PW10	Plain Washer 10	平垫10	14	
4-18	SW10	Spring Washer 10	弹垫10	10	
4-19	WC-8H-103	Small Pully Power Lock	小皮带轮胀套	1	
4-20	WC-8H-104	Small Pully	小皮带轮	1	
4-21	PW18	Plain Washer 18	平垫18	4	
4-22	SW18	Spring Washer 18	弹垫18	2	
4-23	HB18A65	Bolt M18*65	六角螺栓M18*65	2	
4-24	WC-8H-028	Pully Cover	皮带轮罩焊合件	1	
4-25	BX42S.114	Rotary Knob	把手螺母M8	4	
4-26	BPW8	Big Plain Washer 8	大平垫8	8	
4-27	HBF8A25	Nut M8*25	六角螺栓M8*25	6	
4-28	PW8	Plain Washer8	平垫8	4	
4-29	EF175-131	PTO Cap	PTO防尘罩	1	
4-30	SW8	Spring Washer 8	弹垫8	6	
4-31	HN8	Nut M8	六角螺母M8	2	
4-32	BX1100	Belt BX1100 	带齿三角皮带	1	
4-33	BX46	Belt BX46 	带齿三角皮带	4	
4-34	WC-8H-106	Big Pully	大皮带轮	1	
4-35	WC-8H-105	Big Pully Power Lock	大皮带轮胀套	1	
4-36	HN10	Nut M10	六角螺母M10	4	
4-37	HN18	Nut M18	六角螺母M18	2	

4. Transmission Parts

4-38	UCP210	Bearing Block UCP210	轴承座'UCP210	1	
4-39	HBF12A50	Bolt M10*50	六角螺栓M12*50	4	
4-40	HB10A70	Bolt M10*70	六角螺栓M10*70	4	
4-41	HN12	Nut M12	六角螺母M12	14	
4-42	HBF12A60	Bolt M12*60	六角螺栓M12*60	4	
4-43	WC-8H-102	Driving Shaft	输入轴	1	
4-44	KC10A50	Key 10*50	平键10*50	1	
4-45	UCP207	Bearing Block UCP207	轴承座 UCP207	2	
4-46	SW12	Spring Washer 12	弹垫12	10	
4-47	WC-8H-016	Pully Bracket	大皮带轮支架焊合件	1	
4-48	HBF12A45	Bolt M12*45	六角螺栓M12*45	6	
4-49	BPW12	Big Plain Washer	大平垫12	4	
4-50	WC-8H-011	Three Point Linage Frame	悬挂焊合件	1	
4-51	KC12A55	Key 12*55	平键12*55	1	
4-52	WC-8H-015	Rotor Shaft	刀盘轴焊合件	1	
4-53	WC-8H-101	Rotor Knife	动刀片	2	
4-54	HBF10A12	Bolt M10*1.2	六角螺栓M10*12	2	
4-55	WC-8H-117	Chipper Clean Cap	换刀板	1	

5. Bottom Frame Parts



5. Bottom Frame Parts

Ser.No.	Part No.	Name & Specification		Qty	Remarks
5-1	WC-8H-131	Pump Inlet Hose	泵吸油管	1	
5-2	OR16A12A2	O Ring 16*12*2	O型圈16*12*2	1	
5-3	WC-8H-024	Oil Filter Holder	吸油口焊合件	1	
5-4	WC-8H-129	Seal	滤清纸垫	1	
5-5	WU25-80	Oil Filter	吸油滤芯	1	
5-6	HBF6A15	Bolt M6*15	六角螺栓M6*15	7	
5-7	EF1-25	Air Filter	空气滤清器	1	
5-8	HB10A40	Hollow Bolt M10*40	空心螺栓	2	
5-9	LS-3	Oil Level Gauge	油位表	1	
5-10	BW18	Bonded Washer 18	组合垫圈18	2	
5-11	GR18A1.5	Oil Plug M18*1.5	油堵M18*1.5	1	
5-12	HB12A75	Bolt M12*75	六角螺栓M12*75	4	
5-13	HB12A60	Bolt M12*60	六角螺栓M12*60	6	
5-14	NN12	Nylon Nut M12	尼龙锁紧螺母M12	18	
5-15	HB12A90	Bolt M12*90	六角螺栓M12*90	4	
5-16	SP11	Safty Pin	锁销组合件11	2	
5-17	EFH175-105	Lower Pin	下悬挂销	2	
5-18	WC-8H-126	Lower Pin Plater	下悬挂板	2	
5-19	PW24	Plain Washer 24	平垫24	2	
5-20	NN24	Nylon Nut M24	尼龙锁紧螺母M24	2	
5-21	WC-8H-031	Adjusting Feet	调整脚焊合件	4	
5-22	PW12	Plain Washer 12	平垫12	32	
5-23	HBF12A50	Bolt M12*50	六角螺栓M12*50	1	
5-24	HN12	Nut M12	六角螺母M12	1	
5-25	OR20A16A2	O Ring 20*16*2	O型圈20*16*2	3	
5-26	PW8	Plain Washer 8	平垫8	14	
5-27	SW8	Spring Washer 8	弹垫8	10	
5-28	HSHS8A20	Hexagon Socket Head BoltM8*20	内六角圆柱头螺钉8*20	6	
5-29	LW8-8-156	Pump Inlet Joint	PTO进油管接头	1	
5-30	CBN-F304-L	Pump CBN-F304-L	左旋转齿轮泵	1	
5-31	LW-8-157	Pump Outlet Jonit	PTO出油口接头	1	
5-32	OR12A8A2	O Ring 12*8*2	O型圈12*8*2	2	
5-33	WC-8H-132	Pump Return Hose	泵出油管	1	
5-34	BPW12	Big Plain Washer 12	大平垫12	2	
5-35	KC5A5A16	Key 5*5*16	A型平键5*5*16	1	
5-36	WC-8H-114	Pump Shaft	齿轮泵轴	1	
5-37	WC-8H-113	Pump Pully	齿轮泵皮带轮	1	

5. Bottom Frame Parts

5-38	CFS20	Circlip For Shaft	轴用挡圈20	1	
5-39	CFH47	Circlip For Hole	孔用卡簧	1	
5-40	B6204A2RS	Bearing 6204-2RS	深沟球轴承6204-2RS	2	
5-41	WC-8H-112	Pump Block	齿轮泵座	1	
5-42	HBF8A45	Bolt M8*45	六角螺栓M8*45	4	
5-43	NN8	Nylon Nut M8	尼龙锁紧螺母M8	4	
5-44	WC-8H-013	Bottom Frame	底架焊合件	1	
5-45	HBF12A65	Bolt M12*65	六角螺栓M12*65	3	
5-46	WC-8H-025	Oil Tank	油箱焊合件	1	
5-47	LSP-22T-102	Value Joint	接头（一）	1	
5-48	WC-8H-133	Value Return Hose	阀回油管	1	
5-49	PW6	Plain Washer 6	平垫6	3	
5-50	SW6	Spring Washer 6	弹垫6	3	