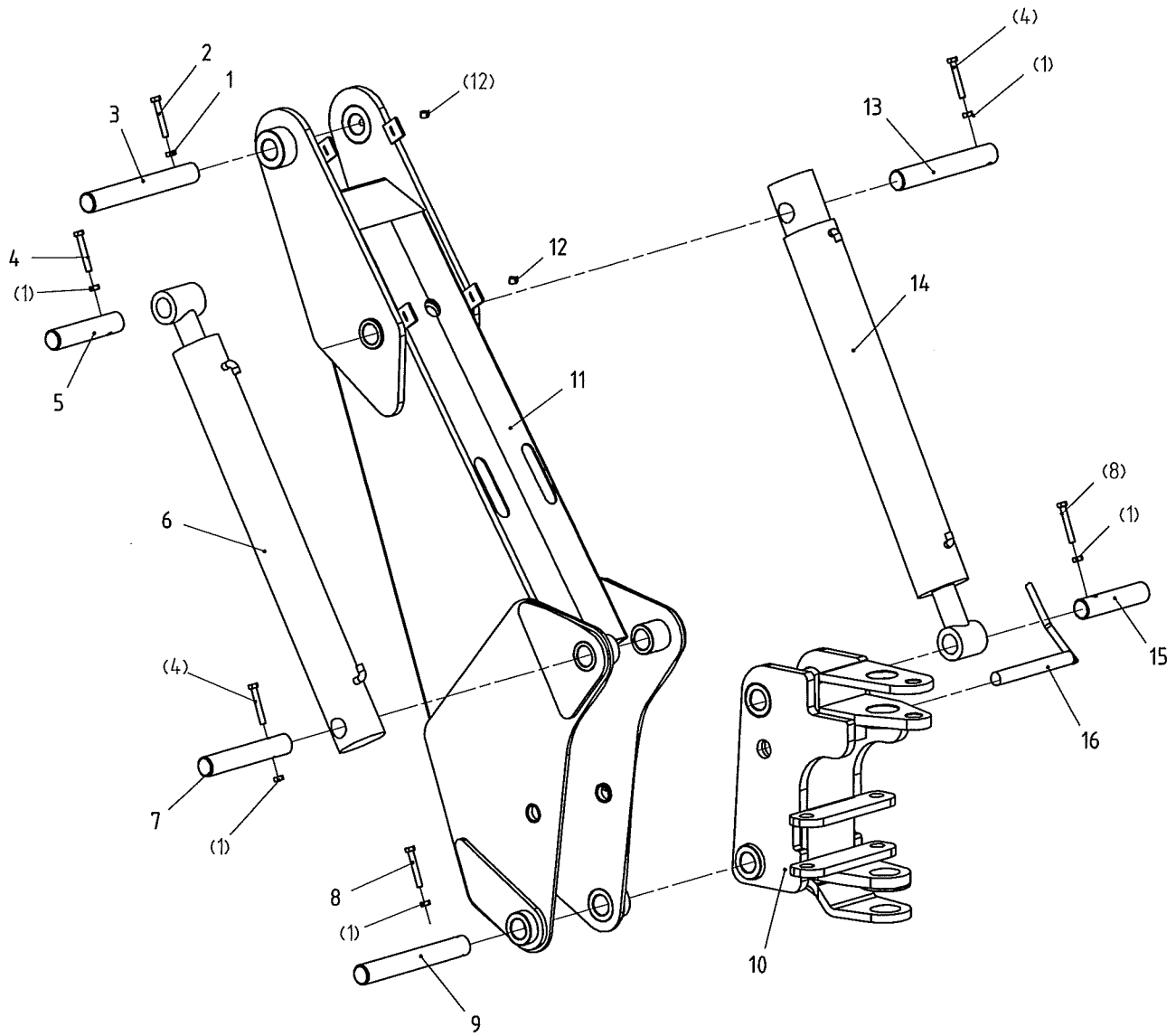


Hydraulic Parts

Ser.No.	Part No.	Name & Specification	Qty			Remarks	
			BH6	BH7	BH8		
6-1	LW-8-06-04-01	Connecting plate	连接板	1	1	1	
6-2	ASY	BH gearbox assembly	齿轮箱装配体	1	1	1	
6-3	CBN-F310	Gear pump	齿轮泵	1	1	1	
6-4	BH7-14-102	Oil inlet nipple for pump	PTO 进油口	1	1	1	
6-5	BH7-05-014	Inlet pipe for pump	油泵进油管组件	1	1	1	
6-6	LS-3	Oil level gauge	油面计	1	1	1	
6-7	BH7-05-125	Outlet nipple for tank	泵进油管油箱接头	1	1	1	
6-8	HB10A25	Bolt M10*25	螺栓M10*25	4	4	4	
6-8	SW10	Spring washer 10	弹垫10	4	4	4	
6-10	SW8	Spring washer 8	弹垫8	10	10	10	
6-11	HSHS8A20	Hexagon socket head screws	内六角圆柱头螺栓M8	6	6	6	
6-12	BH7-14-101	Outlet nipple for pump	PTO出油口	1	1	1	
6-13	BH7-05-128	Inlet nipple for tank	滤清器油箱接头	1	1	1	
6-14	YX0811AT1	Filter	滤清器	1	1	1	
6-15	HB8A20	Bolt M8*30	螺栓M8*30	4	4	4	
6-16	QUQ1	Air cleaner	空气滤清器	1	1	1	
6-17	BH7-05-129	Outlet nipple for filter	滤清器阀出油管接头	1	1	1	
6-18	BH7-05-019	Outlet pipe for valve	多路阀出油管组件	1	1	1	
6-19	BH7-05-011	Tank	油箱焊合件	1	1	1	
6-20	BH7-05-123	Inlet nipple for valve	阀体进油口接头	1	1	1	
6-21	BH7-05-122	Nipple for valve	阀体油缸油管接头	12	12	12	
6-22	BH7-05-016	Inlet pipe for valve	多路阀进油管组件	1	1	1	
6-23	DL39-F15L-T/00(AB)	Multiple unit valve	多路阀	1	1	1	
6-24	BH7-05-124	Outlet nipple for valve	阀体出油口接头	1	1	1	
6-25	BH7-05-012	Outlet pipe for stabilizer cylinder	支腿油缸回油管	2	2	2	
6-26	BH7-07-004	Stabilizer cylinder	支腿油缸	2	2	2	
6-27	BH7-05-012	Inlet pipe for stabilizer cylinder	支腿油缸进油管	2	2	2	
6-28	BH7-07-005	Swing cylinder	转向油缸	2	2	2	
6-29	BH7-05-127	Three-way connection	换向油缸三通接头	2	2	2	
6-30	BH7-05-012	Inlet pipe for swing cylinder	换向油缸进油管	1	1	1	
6-31	BH7-05-012	Outlet pipe for swing cylinder	换向油缸回油管	1	1	1	
6-32	BH7-05-013	Joint pipe for swing cylinder	换向油缸换向油管组	2	2	2	
6-33	BH6-05-012	Inlet pipe for boom cylinder/BH6	大动臂油缸进油管	1			
	BH7-05-012	Inlet pipe for boom cylinder/BH7	大动臂油缸进油管		1		
	BH8-05-012	Inlet pipe for boom cylinder/BH8	大动臂油缸进油管			1	

SER. NO.	PART NO.	NAME & SPECIFICATION				REMARKS
			BH6	BH7	BH8	
6-34	BH6-07-001	Boom cylinder/BH6	大动臂油缸	1		
	BH7-07-001	Boom cylinder/BH7	大动臂油缸		1	
	BH8-07-001	Boom cylinder/BH8	大动臂油缸			1
6-35	BH6-05-012	Outlet pipe for boom cylinder/BH6	大动臂油缸出油管	1		
	BH7-05-012	Outlet pipe for boom cylinder/BH7	大动臂油缸出油管		1	
	BH8-05-012	Outlet pipe for boom cylinder/BH8	大动臂油缸出油管			1
6-36	BH6-05-012	Outlet pipe for dipper cylinder/BH6	小动臂油缸出油管	1		
	BH7-05-012	Outlet pipe for dipper cylinder/BH7	小动臂油缸出油管		1	
	BH8-05-012	Outlet pipe for dipper cylinder/BH8	小动臂油缸出油管			1
6-37	BH6-07-002	Dipper cylinder/BH6	小动臂油缸	1		
	BH7-07-002	Dipper cylinder/BH7	小动臂油缸		1	
	BH8-07-002	Dipper cylinder/BH8	小动臂油缸			1
6-38	BH6-05-012	Inlet pipe for dipper cylinder/BH6	小动臂油缸进油管	1		
	BH7-05-012	Inlet pipe for dipper cylinder/BH7	小动臂油缸进油管		1	
	BH8-05-012	Inlet pipe for dipper cylinder/BH8	小动臂油缸进油管			1
6-39	BH6-05-012	Inlet pipe for bucket cylinder/BH6	斗体油缸进油管	1		
	BH7-05-012	Inlet pipe for bucket cylinder/BH7	斗体油缸进油管		1	
	BH8-05-012	Inlet pipe for bucket cylinder/BH8	斗体油缸进油管			1
6-40	BH6-07-003	Bucket cylinder/BH6	翻斗油缸	1		
	BH7-07-003	Bucket cylinder/BH7	翻斗油缸		1	
	BH8-07-003	Bucket cylinder/BH8	翻斗油缸			1
6-41	BH6-05-012	Outlet pipe for bucket cylinder/BH6	斗体油缸出油管	1		
	BH7-05-012	Outlet pipe for bucket cylinder/BH7	斗体油缸出油管		1	
	BH8-05-012	Outlet pipe for bucket cylinder/BH8	斗体油缸出油管			1

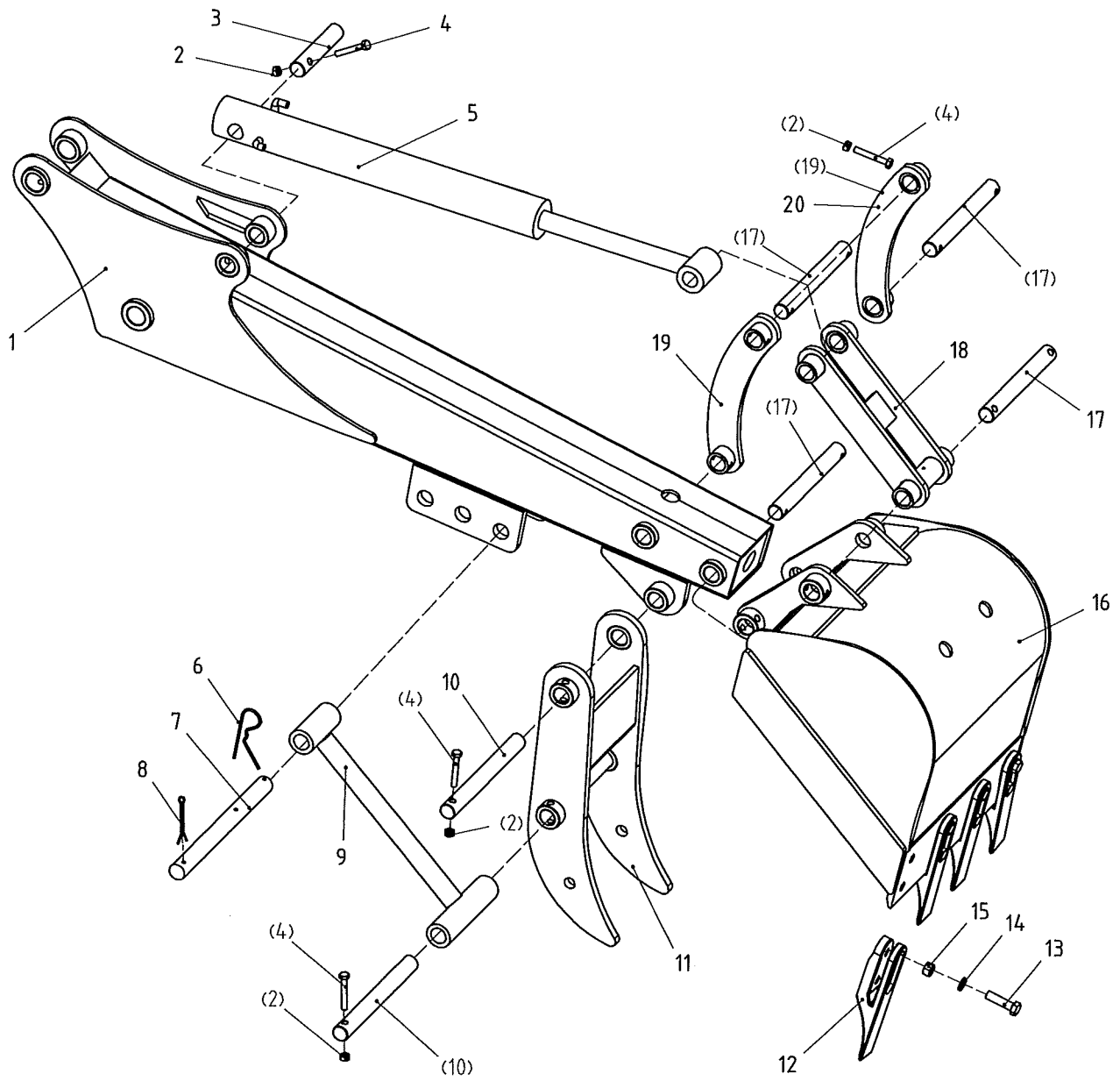
4. Boom Parts



Boom parts

Ser.No.	Part No.	Name & Specification		Qty			Remarks
				BH6	BH7	BH8	
4-1	NN8	NN8	锁紧螺母M8	6	6	6	
4-2	HB8A70	Bolt M8*70	螺栓M8*70	1	1	1	
4-3	BH7-02-103	Pin for dipper	小动臂固定销	1	1	1	
4-4	HB8A55	Bolt M8*55	螺栓M8*55	3	3	3	
4-5	BH7-02-102	Pin for dipper cylinder	小动臂油缸销轴（有杆）	1	1	1	
4-6	BH6-07-002	Dipper cylinder/BH6	小动臂油缸总成	1			
	BH7-07-002	Dipper cylinder/BH7	小动臂油缸总成		1		
	BH8-07-002	Dipper cylinder/BH8	小动臂油缸总成			1	
4-7	BH7-03-101	Pin for dipper cylinder I	小动臂油缸销轴（无杆）	1	1	1	
4-8	HB8A60	Bolt M8*60	螺栓M8*60	2	2	2	
4-9	BH7-09-103	Pin for boom cylinder I	大动臂销轴焊合件	1	1	1	
4-10	BH7-09-011	Swing/BH6/BH7	旋转节焊合件	1	1		
	BH8-09-011	Swing/BH8	旋转节焊合件			1	
4-11	BH6-03-011	Boom/BH6	大动臂焊合件	1			
	BH7-03-011	Boom/BH7	大动臂焊合件		1		
	BH8-03-011	Boom/BH8	大动臂焊合件			1	
4-12	HP16A25	Hoop 16*25	卡箍16-25	4	4	4	
4-13	BH7-03-102	Pin for boom cylinder II	大动臂油缸销轴（无杆）	1	1	1	
4-14	BH6-07-001	Boom cylinder/BH6	大动臂油缸总成	1			
	BH7-07-001	Boom cylinder/BH7	大动臂油缸总成		1		
	BH8-07-001	Boom cylinder/BH8	大动臂油缸总成			1	
4-15	BH7-09-102	Pin for boom cylinder III	大动臂油缸销轴（有杆）	1	1	1	
4-16	BH7-03-104	Safty pin for boom	大动臂安全销	1	1	1	

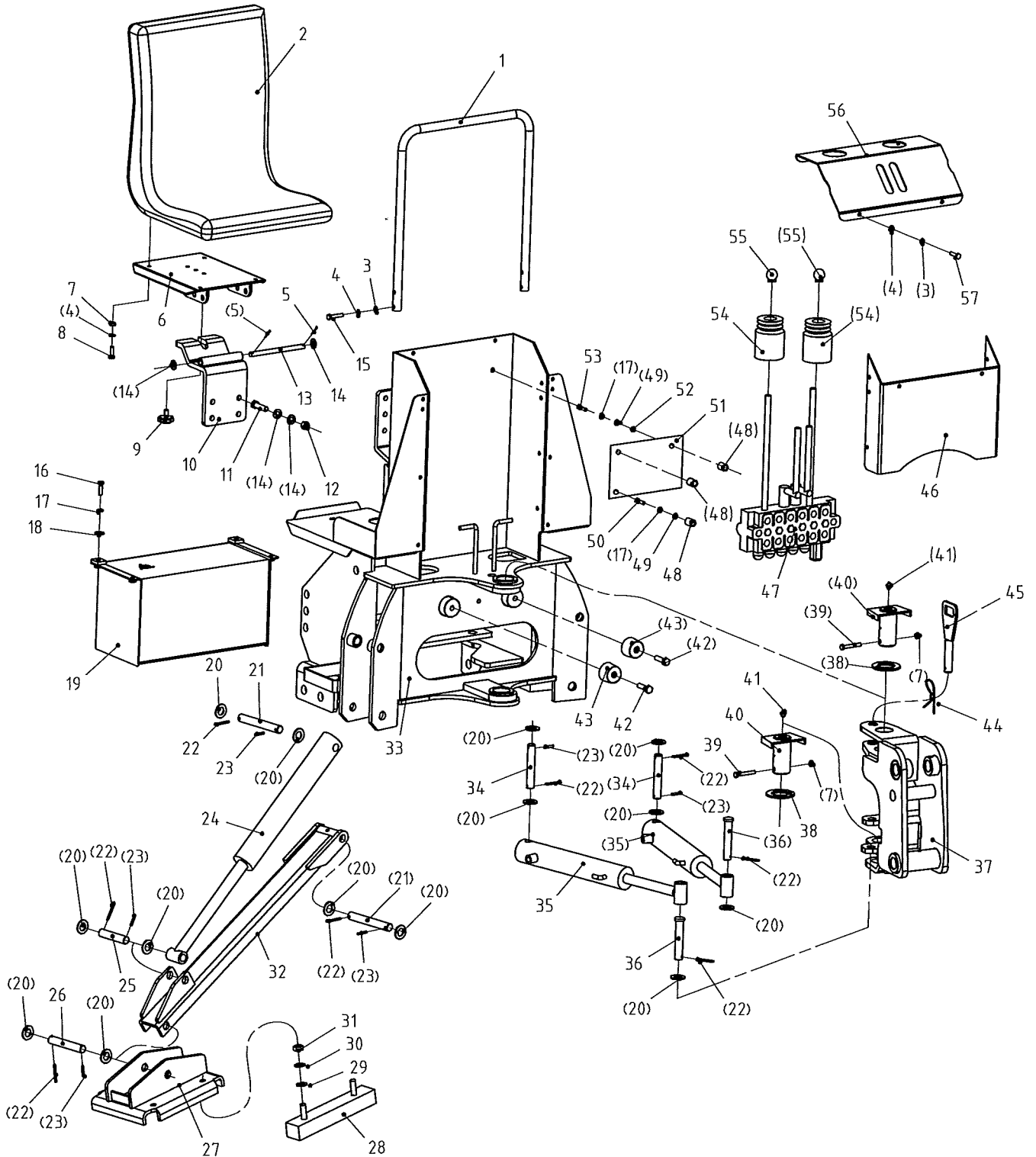
5. Bucket/Dipper Parts



Bucket/Dipper Parts

Ser.No.	Part No.	Name & Specification		Qty			Remarks
				BH6	BH7	BH8	
5-1	BH6-02-011	Dipper/BH6	小动臂焊合件	1			
	BH7-02-011	Dipper/BH7	小动臂焊合件		1		
	BH8-02-011	Dipper/BH8	小动臂焊合件			1	
5-2	NN8	Lock nut M10	锁紧螺母M10	11	11	11	
5-3	BH7-02-101	Pin for bucket I	斗体油缸销轴 (无杆)	1	1	1	
5-4	HB10A55	Bolt M10*55	螺栓M10*55	7	7	7	
5-5	BH6-07-003	Bucket cylinder/BH6	翻斗油缸	1			
	BH7-07-003	Bucket cylinder/BH7	翻斗油缸		1		
	BH8-07-003	Bucket cylinder/BH8	翻斗油缸			1	
5-6	RP4	R pin	R销	2	2	2	
5-7	BH7-13-101	Pin for thumb I	抱木叉销轴 (一)	1	1	1	
5-8	STP5A35	Split pin 5*35	开口销5*35	1	1	1	
5-9	BH7-12-011	Tunmb support	抱木叉支撑架焊合件	1	1	1	
5-10	BH7-13-102	Pin for thumb II	抱木叉销轴 (二)	1	2	1	
5-11	BH7-13-011	Thumb	抱木叉	1	1	1	
5-12	BH7-01-102	Tooth	铲刀	4	4	4	
5-13	HB12A1.25A55	Bolt M12*1.25*45	六角螺栓M12×1.25×45	8	8	8	
5-14	SW8	Spring washer 8	弹垫8	8	8	8	
5-15	HN12	Nut M12	螺母M12	8	8	8	
5-16	BH7-01-011	Bucket	斗体焊合件	1	1	1	
5-17	BH7-01-101	Pin for bucket I	斗体固定销	4	4	4	
5-18	BH7-01-012	Link Support bracket	连杆底座支架焊合件	1	1	1	
5-19	BH7-01-013	Link guide (left)	连杆焊合件(左)	1	1	1	
5-20	BH7-01-014	Link guide (right)	连杆焊合件(右)	1	1	1	

3. Sub Frame/Stabilizer Parts

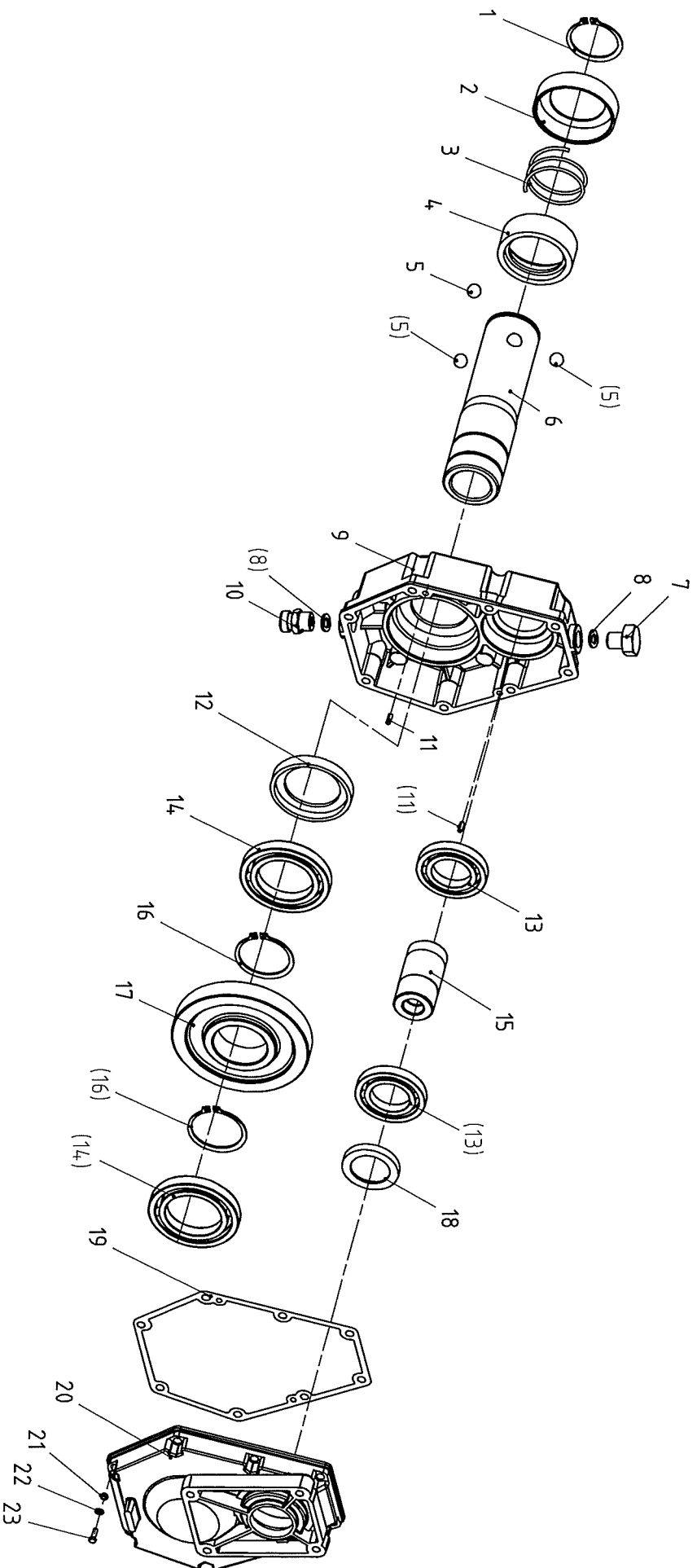


Sub Frame/Stabilizer Parts

Ser. No.	Part No.	Name & Specification		Qty			Remarks
				BH6	BH7	BH8	
3-1	BH7-10-104	Protection bar	控制柜保险杆	1	1	1	
3-2	WYXW-1	Seat	座椅	1	1	1	
3-3	PW8	Plain washer 8	平垫8	12	12	12	
3-4	SW8	Spring washer 8	弹垫8	8	8	8	
3-5	STP3A20	Split pin 3*20	开口销3*20	2	2	2	
3-6	BH7-06-011	Mounting plate for seat	座椅底板焊合件	1	1	1	
3-7	NN8	Lock nut M8	锁紧螺母M8	6	6	6	
3-8	HB8A20	Bolt M8*20	螺栓M8*20	4	4	4	
3-9	HK10A25	Seven korns knob	七角旋钮40*M10*25	1	1	1	
3-10	BH7-06-012	Support plate	座椅支撑板焊合件	1	1	1	
3-11	HB12A25	Bolt M12*50	螺栓M12*50	4	4	4	
3-12	NN12	Lock nut M12	锁紧螺母M12	4	4	4	
3-13	BH7-06-102	Pin for seat	座椅底板连接销	1	1	1	
3-14	PW12	Plain washer 12	平垫12	10	10	10	
3-15	HB8A45	Bolt M8*45	螺栓M8*45	4	4	4	
3-16	HB10A30	Bolt M10*30	螺栓M10*30	4	4	4	
3-17	SW10	Plain washer 10	弹垫10	7	7	7	
3-18	BPW10	Big plain washer 10	大平垫10	4	4	4	
3-19	BH7-05-011	Tank	油箱焊合件	1	1	1	
3-20	PW20	Plain washer 20	平垫20	22	22	22	
3-21	BH7-10-101	Stablizer cylinder pin	支腿油缸销轴	4	4	4	
3-22	STP5A35	Split pin 5*35	开口销5*35	12	12	12	
3-23	SPS5A20	Spring pin slotted 5*30	弹性圆柱销5*30	10	10	10	
3-24	BH7-07-004	Stablizer cylinder	支腿油缸	2	2	2	
3-25	BH7-08-102	Leg fixed pin	支腿油缸固定销轴	1	1	1	
3-26	BH7-08-10	Pin for leg support	撑杆固定销轴	2	2	2	
3-27	BH7-08-011	Leg support	底板焊合件	2	2	2	
3-28	BH7-16-101		橡胶垫	4	4	4	
3-29	GB97.1-86		平垫12	8	8	8	
3-30	GB93-86		弹垫12	8	8	8	
3-31	GB6170-86		螺母M12	8	8	8	
3-32	BH7-08-012	Stabilizer leg	撑杆焊合件	2	2	2	
3-33	BH7-10-011	Base frame/BH6/BH7	底座总成焊合件	1	1		
	BH8-10-011	Base frame/BH8	底座总成焊合件			1	
3-34	BH7-10-102	Pin for swing cylinder	转向油缸销轴	2	2	2	

3-1	BH7-10-104	Proteation bar	控制柜保险杆	1	1	1	
3-35	BH7-07-005	Swing cylinder	转向油缸	2	2	2	
3-36	BH7-09-104	Pin for swing	换向油缸销轴	2	2	2	
3-37	BH7-09-011	Swing frame/BH6/BH7	旋转节焊合件	1	1		
	BH8-09-011	Swing frame/BH8	旋转节焊合件			1	
3-37	BH7-09-207	Spacer	隔套	2	2	2	
3-39	HB8A55	Bolt M8*55	螺栓M8*55	2	2	2	
3-40	BH7-09-101	Hinge pin	悬挂销轴焊合件	2	2	2	
3-41	GF8A1	Grease fitting M8*1	油嘴M8*1	2	2	2	
3-42	HSHS10A35	Hexagon Socket head screws M10*35	内六角圆柱头螺栓M10*35	2	2	2	
3-43	BH7-10-103	Rubber block	缓冲块	2	2	2	
3-44	RP4	R pin 4	R销4	1	1	1	
3-45	BH7-09-105	Swing pin	旋转节固定销	1	1	1	
3-46	BH7-10-015	Front cover	控制柜前盖板焊合件	1	1	1	
3-47	DL39-F15L-T/00(AB)	Multiple unit valve	多路阀	1	1	1	
3-48	BH7-10-105	Spacer	阀体加强板垫套	3	3	3	
3-49	PW10	Plain washer 10	平垫10	3	3	3	
3-50	HB10A1.25A40	Bolt M10*1.25*40	螺栓M10*1.25*40	1	1	1	
3-51	BH7-10-226	Reinforcing plate	阀体加强板	1	1	1	
3-52	HN10	Nut M10	螺母M10	2	2	2	
3-53	HB10A65	Bolt M10*65	螺栓M10*65	2	2	2	
3-54	DC60A120	Dust cover 60*120	防尘罩60*120	2	2	2	
3-51	BHN10	Ball head nut M10	球头螺帽M10	4	4	4	
3-55	BH7-10-228	Upper cover	控制上盖板	1	1	1	
3-56	HB8A25	Bolt M8*25	螺栓M8*25	4	4	4	

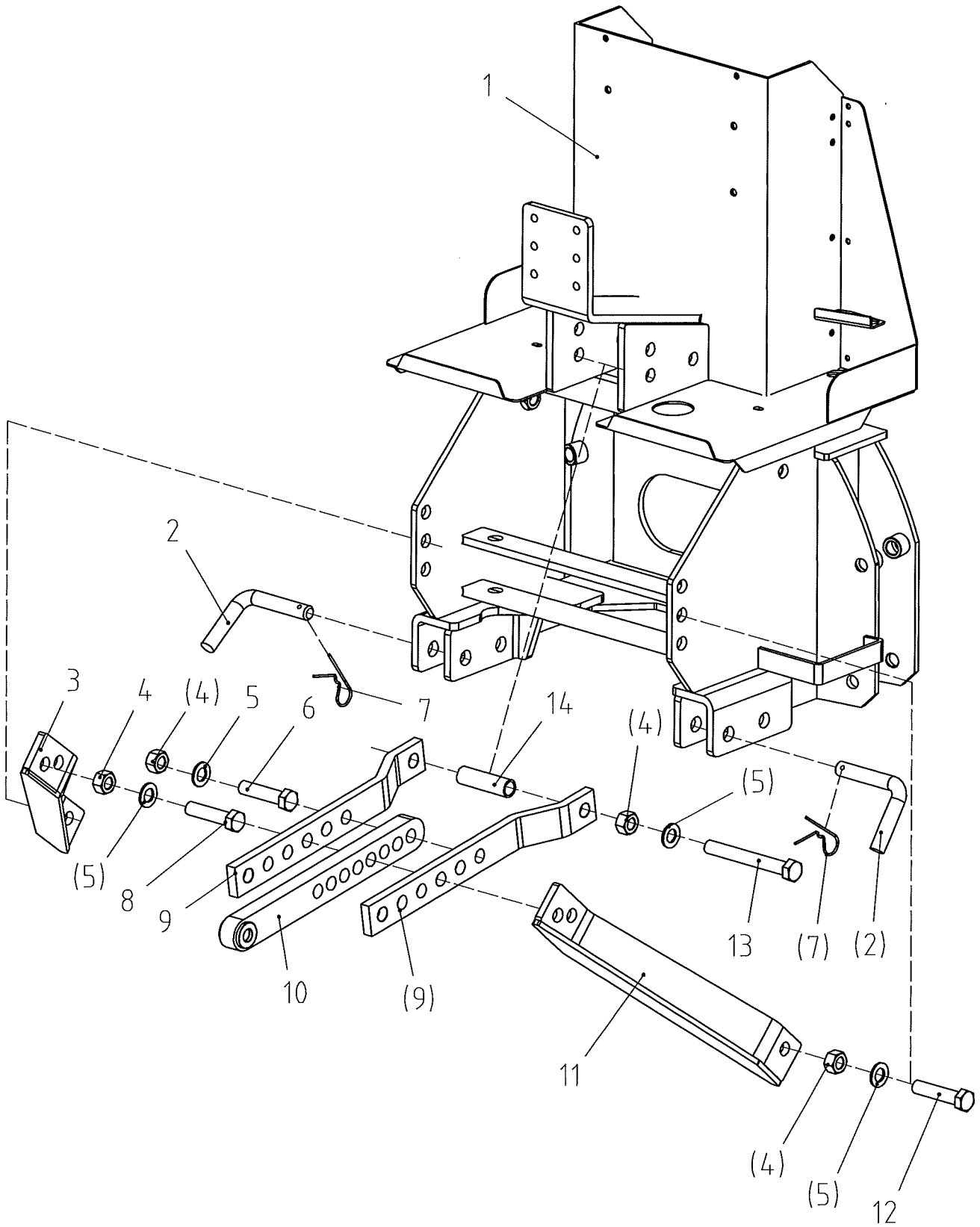
1. BH Gearbox Parts



BH Gearbox Parts

Ser. No.	Part No.	Name & Specification		Qty	Remarks
1-1	CF548	Circlip 48	轴用卡簧48	1	
1-2	LW-8-06-04-02-01	Seat for spring I	弹簧卡一	1	
1-3	LW-8-06-04-02-03	Spring	弹簧	1	
1-4	LW-8-06-04-02-02	Seat for spring II	弹簧卡二	1	
1-5	LW-8-06-04-02-04	Ball	钢球	3	
1-6	LW-8-06-04-02-05	Shaft	主动连接轴	1	
1-7	GR16A1.5	Greasy blockage M16*1.5	油堵M16*1.5	1	
1-8	BW16	Bonded washer 16	组合垫圈16	2	
1-9	LW-8-06-07-02-08	Box I	箱体一	1	
1-10	IG180-022	Exhaust bolt	排气螺栓	1	
1-11	RDP5A16	Round pin 5*16	圆柱销5*16	2	
1-12	OS725010	Oilseal 72*50*10	油封72*50*10	1	
1-13	B6007	Bearing 6007	深沟球轴承6007	2	
1-14	B6010	Bearing 6010	深沟球轴承6010	2	
1-15	LW-8-06-04-02-07	Driven gear	从动齿轮	1	
1-16	CFH50	Circlip 50	轴用卡簧50	2	
1-17	LW-8-06-07-02-06	Driving Gear	主动齿轮	1	
1-18	OS50357	Oilseal 50*35*7	油封50*35*7	1	
1-19	LW-8-06-07-02-10	Paper pad	纸垫	1	
1-20	LW-8-06-07-02-09	Box II	箱体二	1	
1-21	HN6	Nut M6	螺母M6	8	
1-22	SW6	Spring washer 6	弹垫6	8	
1-23	HSHS6A35	Hexagon Socket head screws M6*35	内六角圆柱头螺钉M6*35	8	

2. Mounting Parts



Mounting Parts

Ser. No.	Part No.	Name & Specification		Qty	Remarks
2-1	BH7-10-011	Base frame	底座总成焊合件	1	
2-2	BH7-10-106	Support pin	撑脚锁销	2	
2-3	left	Lower connecting weldment (left)	底座连杆焊合件 (左)	1	
2-4	NN20	Nylon lock nut M20	锁紧螺母M20	5	
2-5	PW20	Plain washer 20	弹垫20	10	
2-6	HB20A95	Bolt M20*95	螺栓M20*95	1	
2-7	RP4	R pin 4	R销4	2	
2-8	HB20A120	Bolt M20*120	螺栓M20*120	1	
2-9	BH7-11-203	Joint plate	座椅连杆	2	
2-10	BH7-11-012	Draw bar	拉杆焊合件	1	
2-11	BH7-11-013	Lower connecting weldment (right)	底座连杆焊合件 (右)	1	
2-12	HB20A55	Bolt M20*55	螺栓M20*55	2	
2-13	HB20A185	Bolt M20*185	螺栓M20*185	1	
2-14	BH7-11-101	Spacer	上连接套管	1	