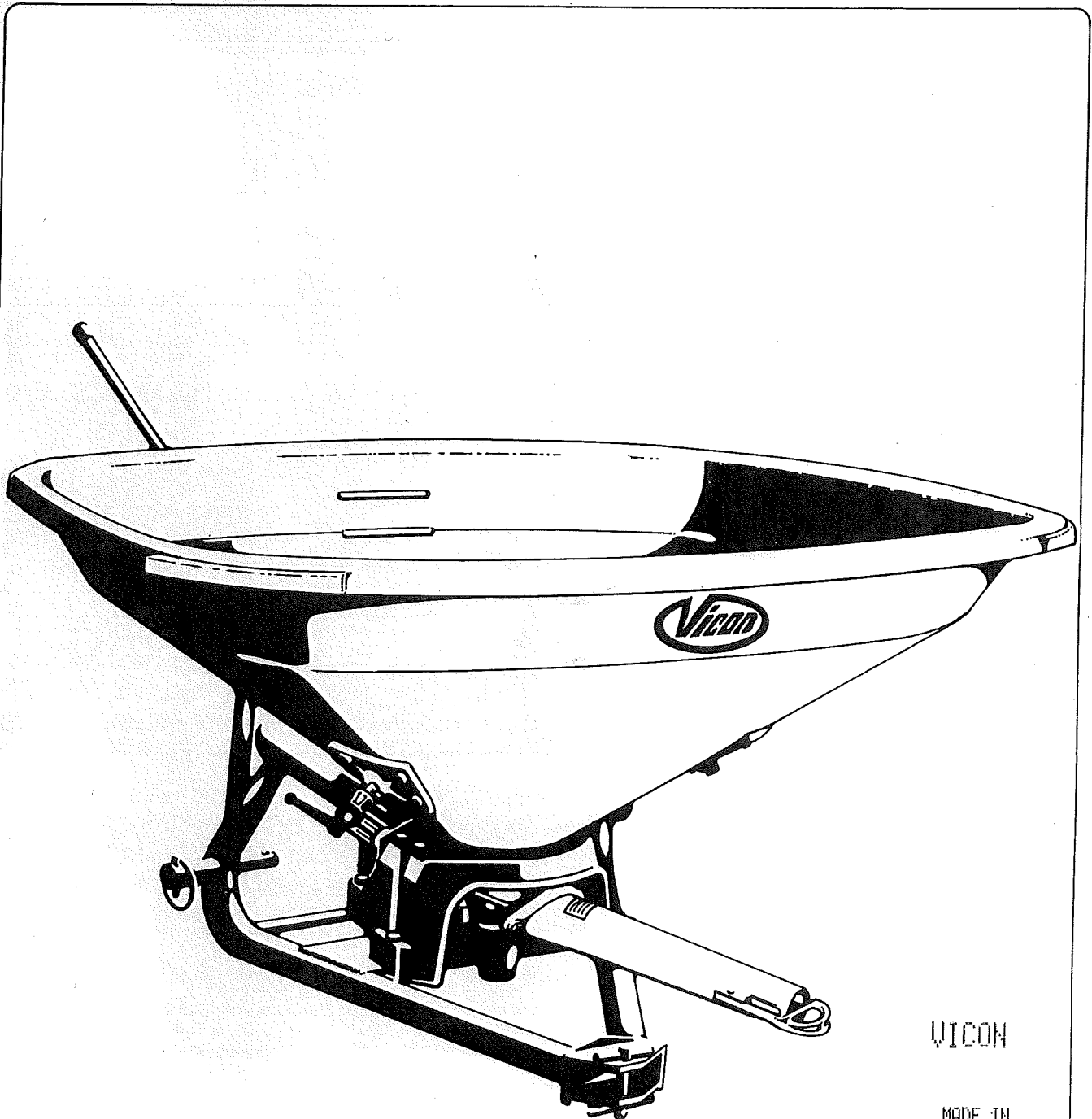




*spareparts list*  
*vari-spreader*  
*distributeur d'engrais*  
*pendeldüngerstreuer*  
*pendelstrooier*

**PS402 serie 75400**



VICON

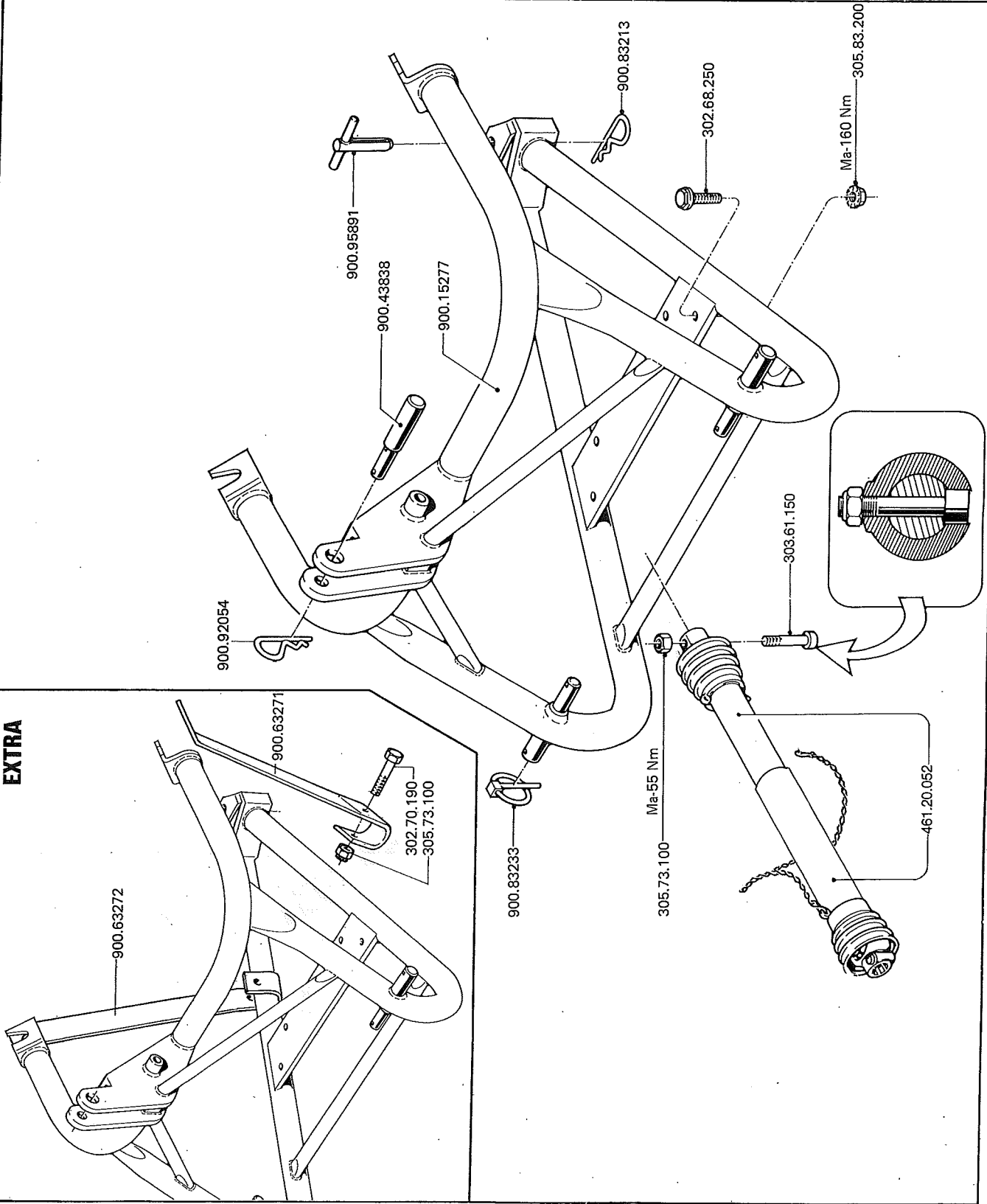
MADE IN  
HOLLAND

70.002.489/21

serial number 75400

PS 402

**EXTRA**



bestellnummer  
 ordernummer  
 num. à commander  
 Bestellnummer

|            |   |
|------------|---|
| 900.15277  | 1 |
| 900.43838  | 1 |
| 900.83213  | 2 |
| 900.83233  | 2 |
| 900.92054  | 1 |
| 900.95891  | 1 |
| 302.68.250 | 4 |
| 303.61.150 | 1 |
| 305.73.100 | 1 |
| 305.83.200 | 4 |
| 461.20.052 | 1 |

K100-M12x50  
 10.9-M10x50  
 8/M10  
 K10/M12  
 A13/8xK94/1-540

**EXTRA**

|            |   |
|------------|---|
| 900.63271  | 1 |
| 900.63272  | 1 |
| 302.70.190 | 2 |
| 305.73.100 | 2 |

8.8-M10x90  
 8/M10

serial number 75400

EXTRA

D2

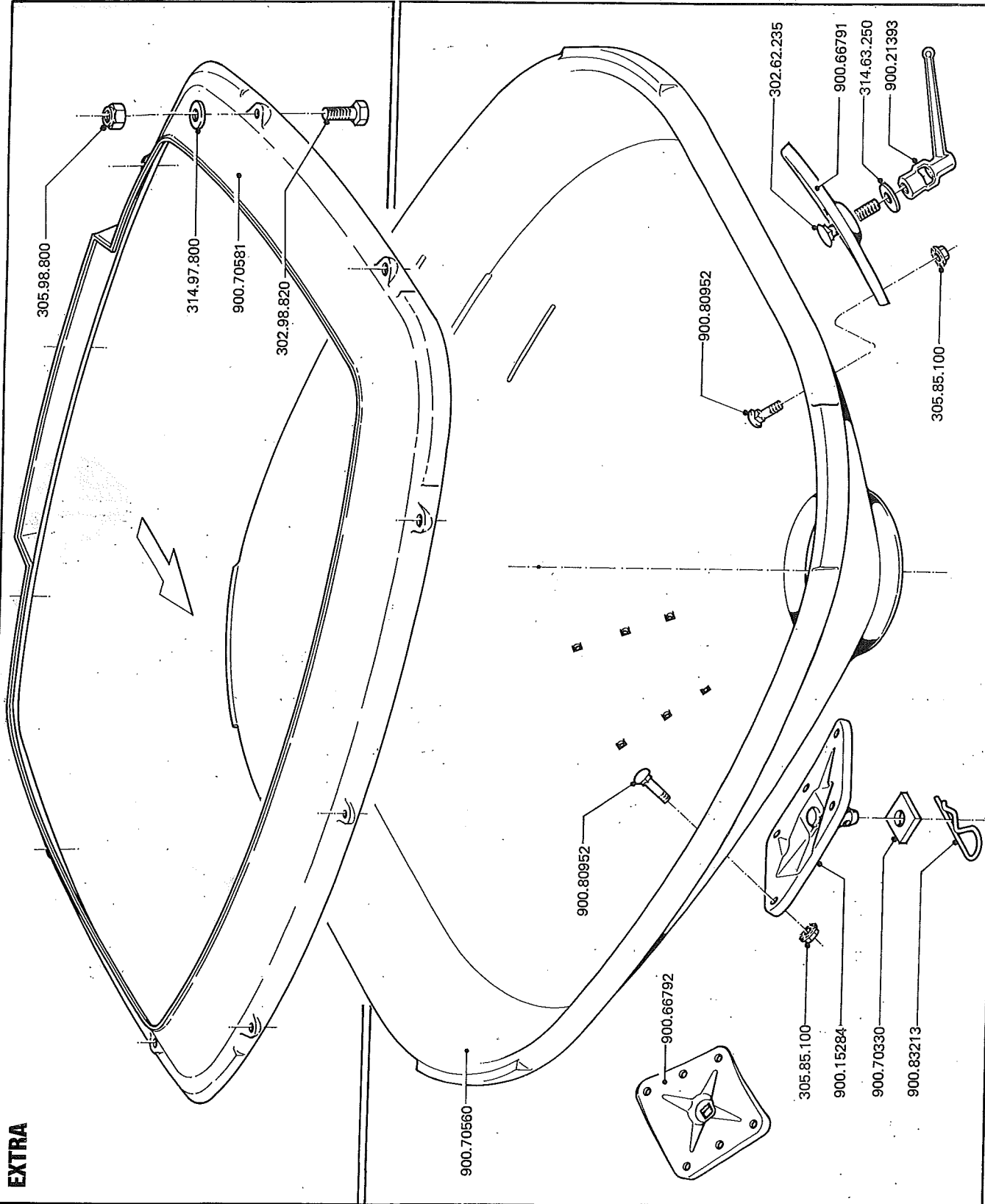
PS 402

bestelnummer  
ordernumber  
num. à commander  
Bestellnummer

EXTRA

|            |    |           |
|------------|----|-----------|
| 900.70581  | 1  | 8.8-M8x20 |
| 302.98.820 | 10 | 8/M8      |
| 305.98.800 | 10 | 8,4       |
| 314.97.800 | 10 |           |

|            |    |            |
|------------|----|------------|
| 900.15284  | 1  |            |
| 900.21393  | 2  |            |
| 900.66791  | 1  |            |
| 900.66792  | 1  |            |
| 900.70330  | 1  |            |
| 900.70560  | 1  |            |
| 900.80952  | 17 |            |
| 900.83213  | 2  |            |
| 302.62.235 | 2  | 4.6-M12x35 |
| 305.85.100 | 17 | 8/M10      |
| 314.63.250 | 2  | A13        |

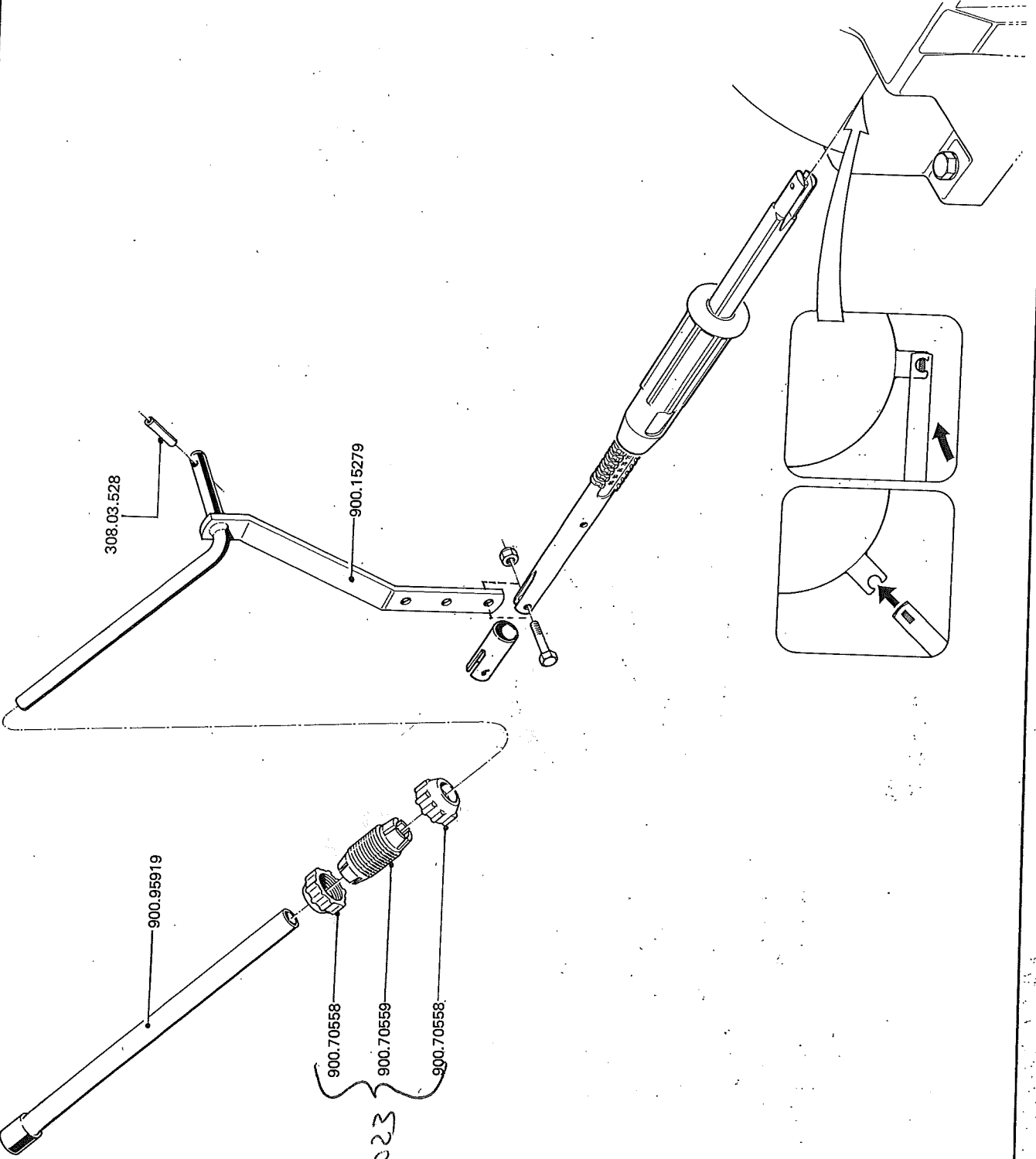


serial number 75400

PS 402

|                  |      |
|------------------|------|
| bestellnummer    | 1    |
| ordernummer      | 2    |
| num. à commander | 1    |
| Bestellnummer    | 1    |
|                  | 5x28 |

|            |   |
|------------|---|
| 900.15279  | 1 |
| 900.70558  | 2 |
| 900.70559  | 1 |
| 900.95919  | 1 |
| 308.03.528 | 1 |



79750023

serial number 75400

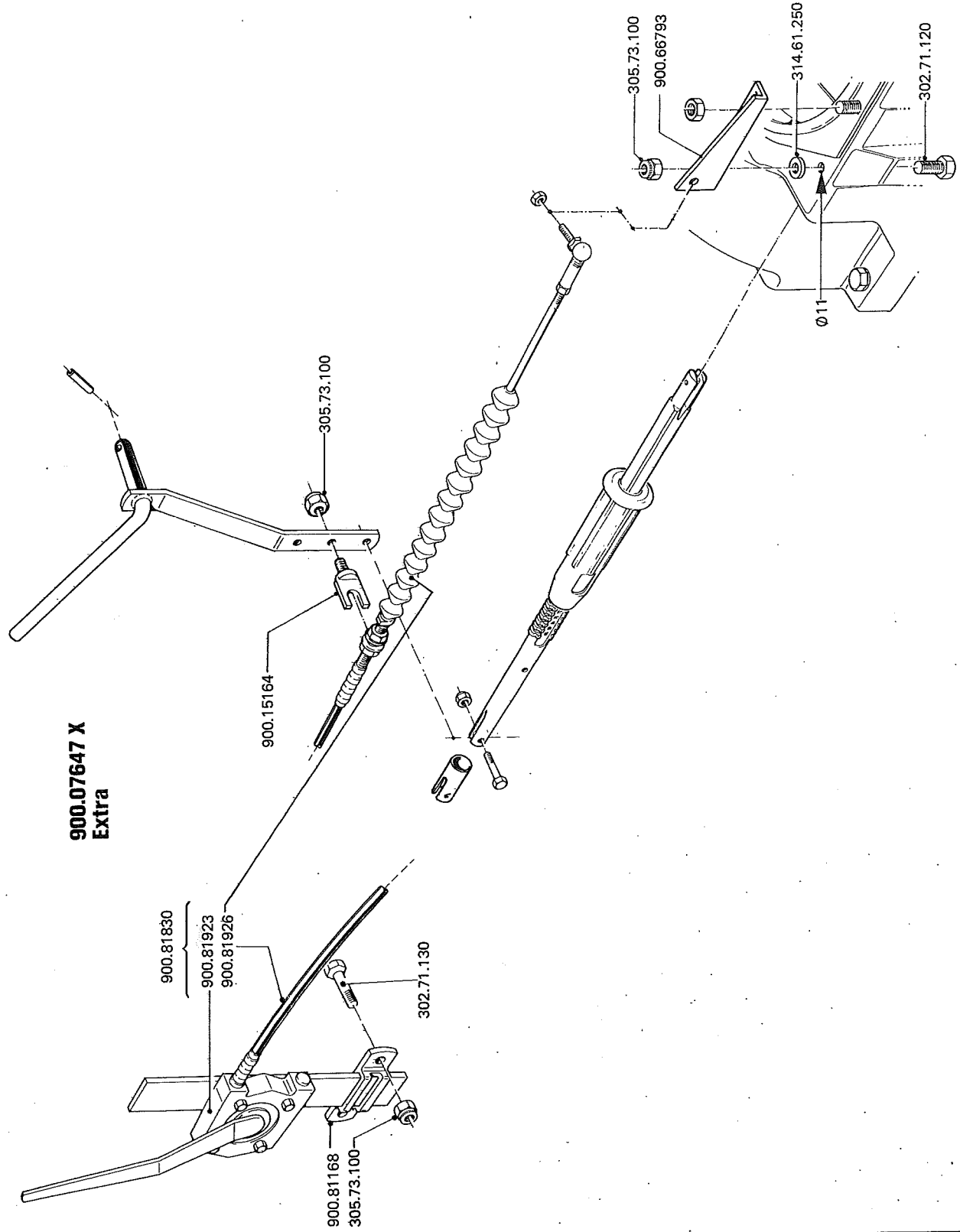
D4

PS 402

bestelnummer  
ordernumber  
num. à commander  
Bestellnummer

EXTRA

|            |   |            |
|------------|---|------------|
| 900.07647X | 1 |            |
| 900.15164  | 1 |            |
| 900.66793  | 1 |            |
| 900.81168  | 1 |            |
| 900.81830  | 1 |            |
| 900.81923  | 1 |            |
| 900.81926  | 1 |            |
| 302.71.120 | 1 | 8.8-M10x20 |
| 302.71.130 | 2 | 8.8-M10x30 |
| 305.73.100 | 4 | 8/M10      |
| 314.61.250 | 1 | 13         |

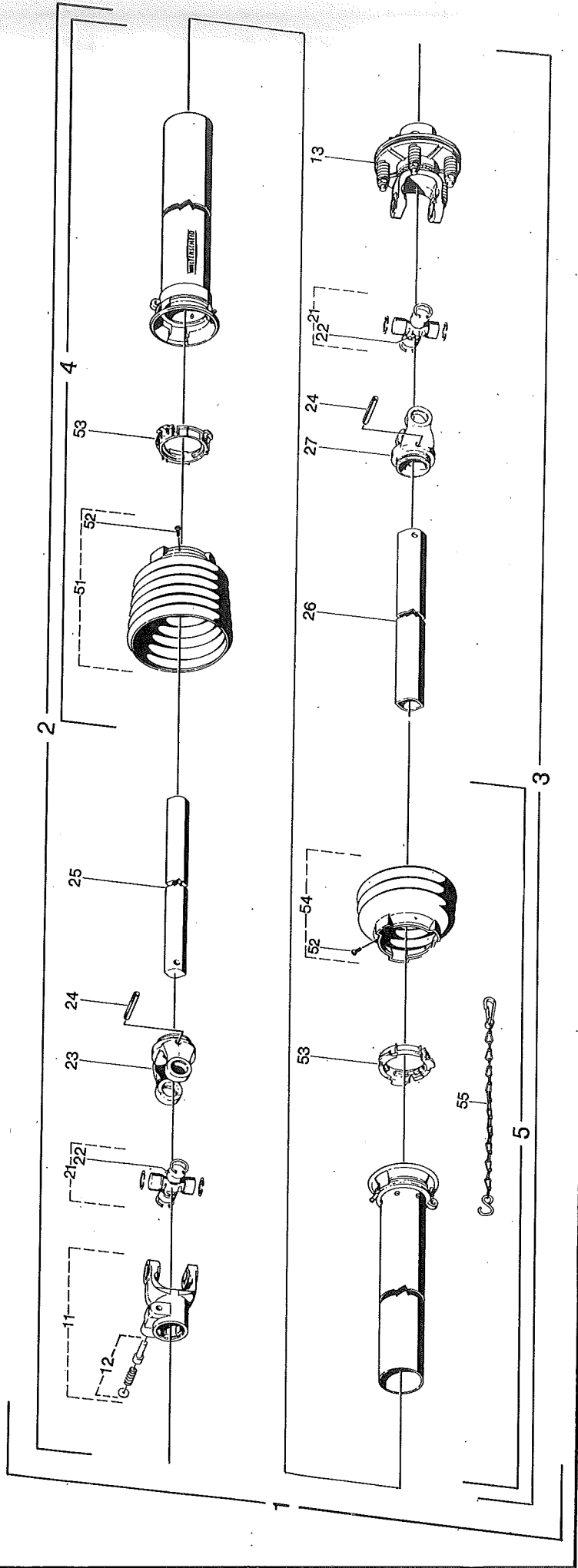
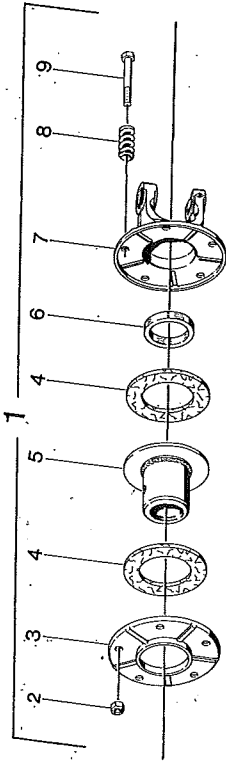


serial number 75400

PS 402

|   |            |           |
|---|------------|-----------|
| 1 | 463.05.051 | 56.104.19 |
| 2 | 305.75.800 | 8/M8      |
| 3 | 463.01.312 | 16.20.69  |
| 4 | 463.01.351 | 56.73.07  |
| 5 | 463.01.455 | 16.50.415 |
| 6 | 463.01.212 | 16.52.05  |
| 7 | 463.01.385 | 10.34.121 |
| 8 | 463.01.133 | 66.01.47  |
| 9 | 302.70.860 | 8.8-M8x60 |

| Vicon | Walterscheid      |
|-------|-------------------|
| 1     | A1 3/8"xK94/1-540 |
| 2     | A1 3/8"x23,5-490  |
| 3     | A K94/1x30-475    |
| 4     | 85.002-395        |
| 5     | 85.001-390        |
| 11    | 10.10.00          |
| 12    | 462.21.110        |
| 13    | 463.05.051        |
| 21    | 462.22.100        |
| 22    | 417.02.845        |
| 23    | 462.23.221        |
| 24    | 308.03.850        |
| 25    | 462.24.118        |
| 26    | 462.24.319        |
| 27    | 462.23.121        |
| 51    | 462.92.900        |
| 52    | 303.93.410        |
| 53    | 462.92.646        |
| 54    | 462.92.901        |
| 55    | 462.22.301        |



serial number 75400

C5

PS 402

- 1 463.05.051
- 2 305.75.800
- 3 463.01.312
- 4 463.01.351
- 5 463.01.455
- 6 463.01.212
- 7 463.01.385
- 8 463.01.133
- 9 302.70.860

- 1 461.20.053
- 2 461.16.137
- 3 461.15.141
- 4 463.12.057
- 5 463.11.055
- 11 462.21.110
- 12 462.21.001
- 13 463.05.051
- 21 462.22.100
- 22 417.02.845
- 23 462.23.221
- 24 308.03.850
- 25 462.24.118
- 26 462.24.319
- 27 462.23.121
- 51 462.92.900
- 52 303.93.410
- 53 462.92.804
- 54 462.92.646
- 55 462.92.901
- 56 462.22.301

- Walterscheid
- A1 3/8"xK94/1-540
- A1 3/8"x23.5-490
- A K94/1x30-475
- 85.007-395
- 85.004-390
- 10.10.00
- AGRASET 101
- 56.104.19
- 10.01.00
- 63.27.00
- 10.48.00
- 8x50
- 75.06.15-450
- 75.12.15-435
- 10.49.00
- 85.05.06
- 4.8-M4x10
- 83.10.03
- 83.09.01
- 85.05.03
- 82.36.03

30-31mm adj. length

