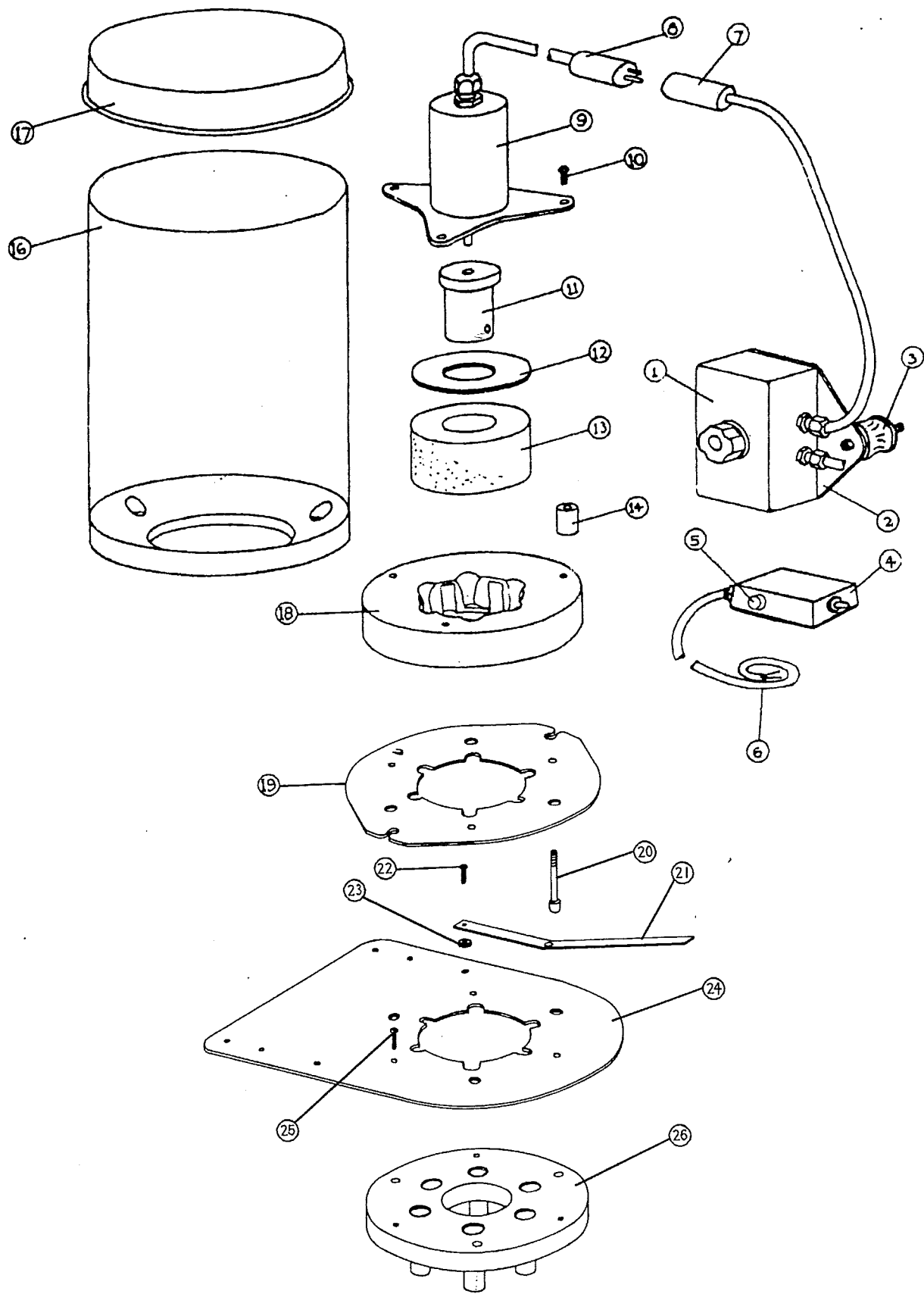


9. METERING SYSTEM PARTS DRAWING



9.1 METERING SYSTEM PARTS LIST

Drawing Reference	Number per Unit	Description	Part Number
1	1	electronic controller	1053
2	1	control box laser bracket	1018
3	1	rubber cotton reel mount	1019
4	1	on/off switch	1050
5	1	fuse set	1050.6
6	1	electrical lead – main	1049
7	1	electrical lead – controller Female	1047
8	1	electrical lead – controller Male	1048
9	1	complete motor assembly – 8, 20 and 40rpm	1099
10	3	button skt screw – M6x8	2142
11	1	pad driving hub	1052
12	1	pad sheild washer	2154
13	1	sponge pad – number 1 (with container)	1045.1
	1	sponge pad – number 2 (with container)	1045.2
	1	sponge pad – number 3 (with container)	1045.3
14	3	star plate support bush	2137
16	1	polycarbonate seed hopper	2141
17	1	metering system lid (calibration bowl)	2145
18	1	plastic metering plate	1033
19	1	metering system locating plate (lever type)	2131
20	3	locating stud (G2)	2126
21	2	lever	2132
22	2	lever pivot bolt – M6x25 button skt screw and nyloc	2133
23	2	lever pivot washer	2134
24	1	metering system base plate (lever type)	2130
25	3	collector plate bolt – M6x30 button skt screw and nyloc	2139
26	1	plastic collector plate (G2)	2127
	1	seed hopper – 50 litres	5051
	1	Seed Spider operating manual	1001