

E-ROTOR DRIVE ASSEMBLY

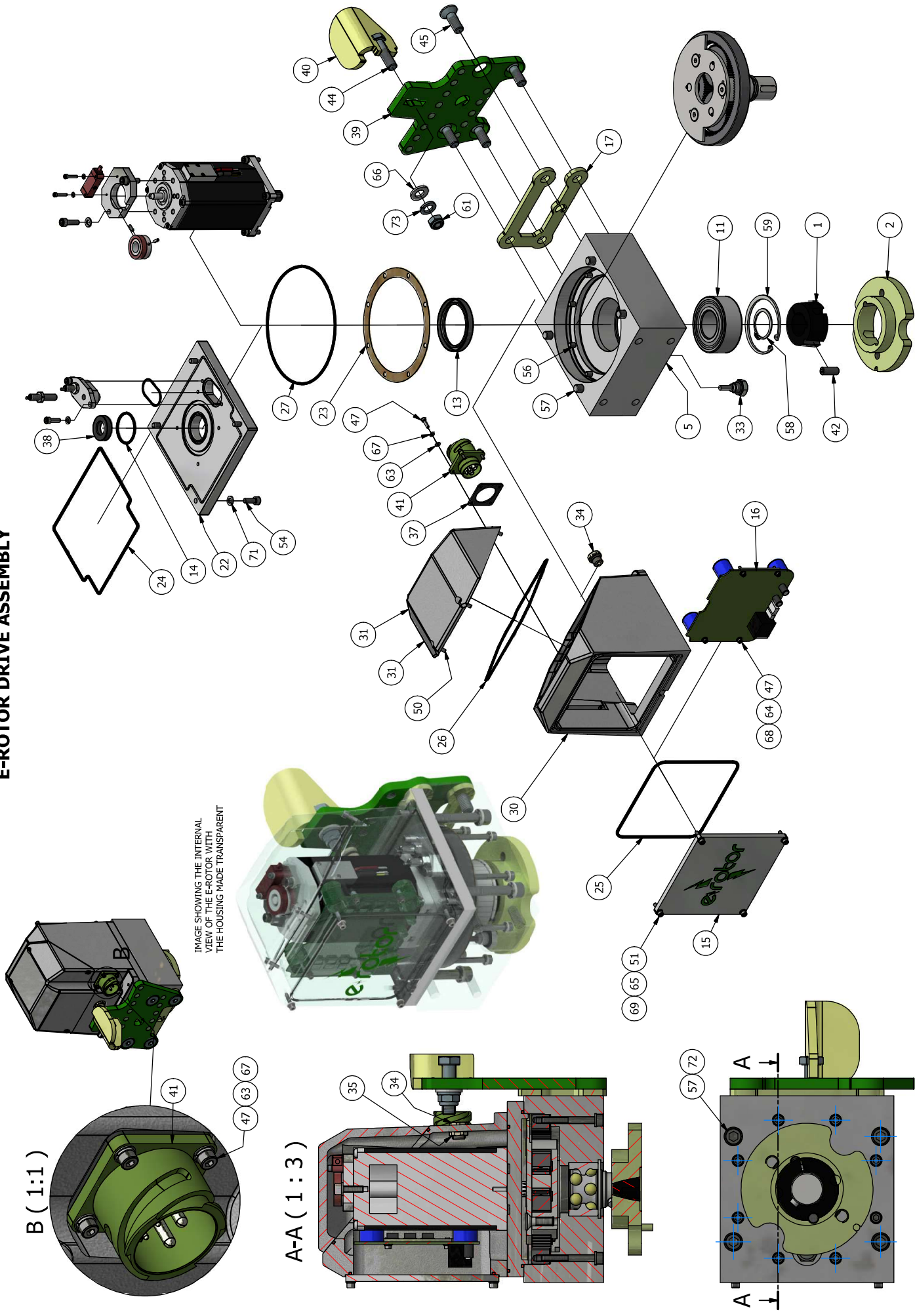
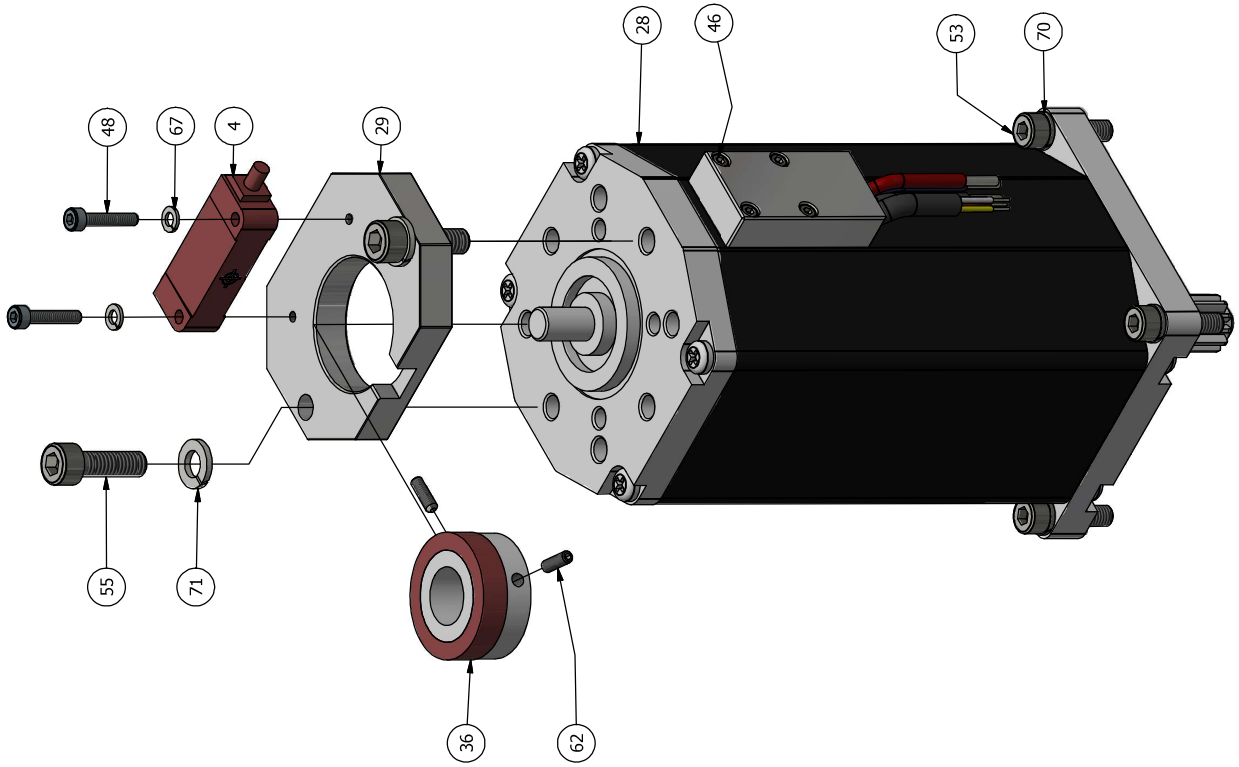
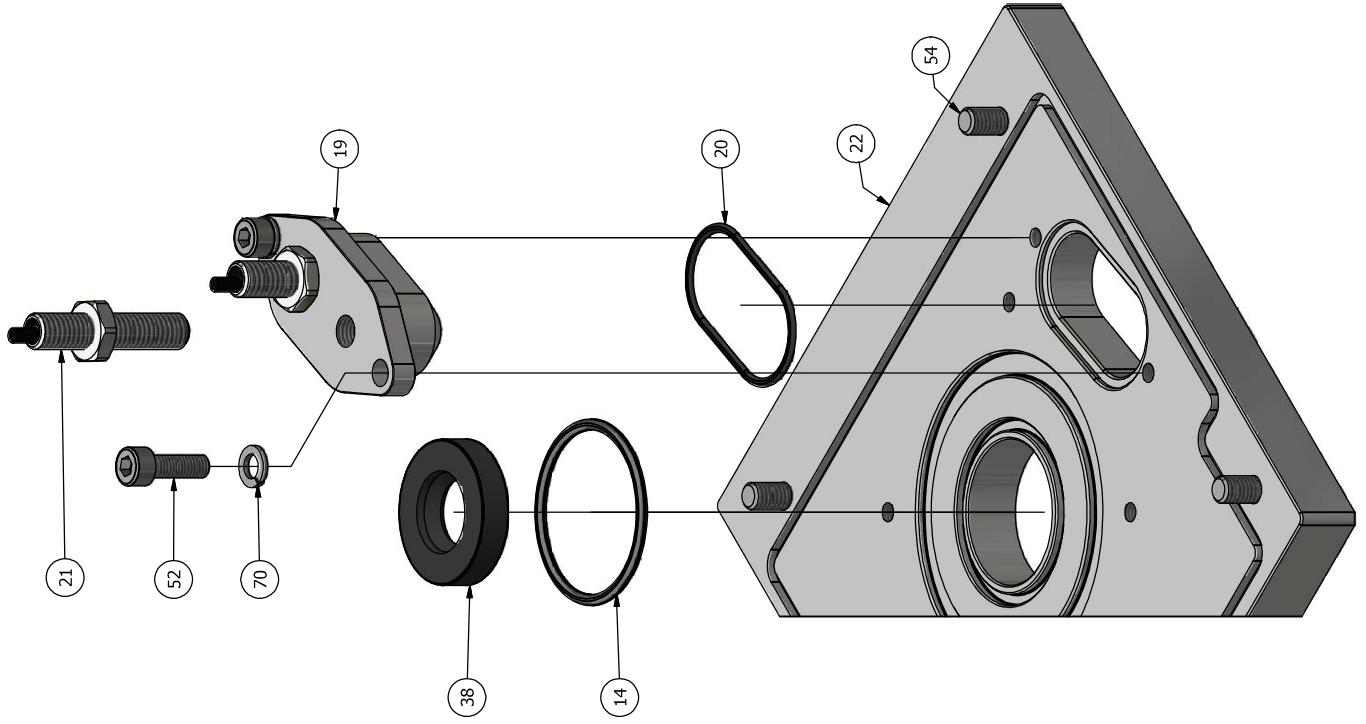
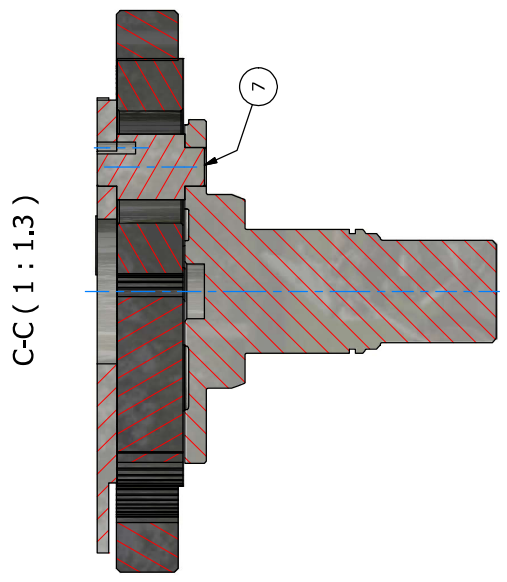
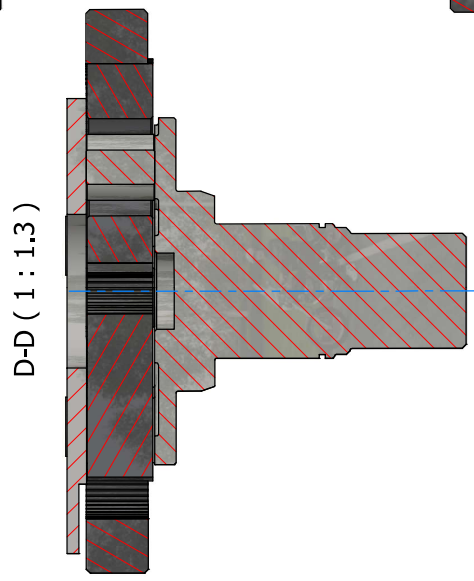
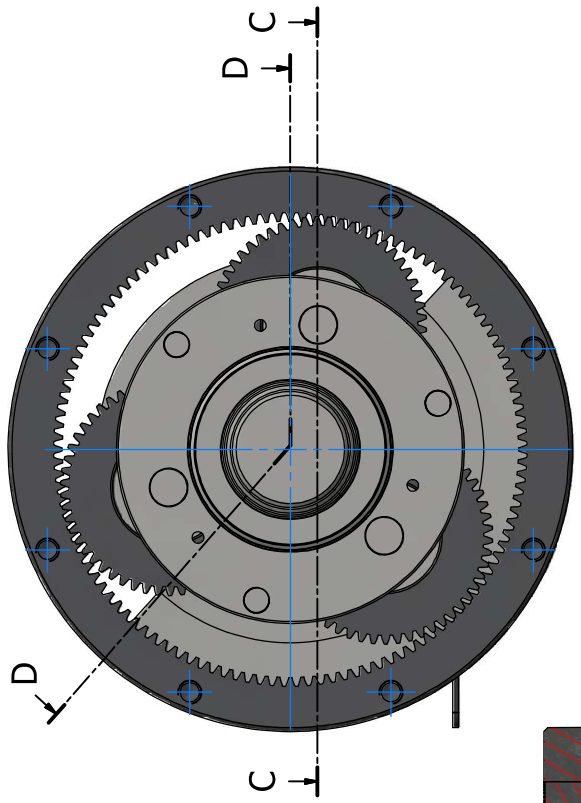
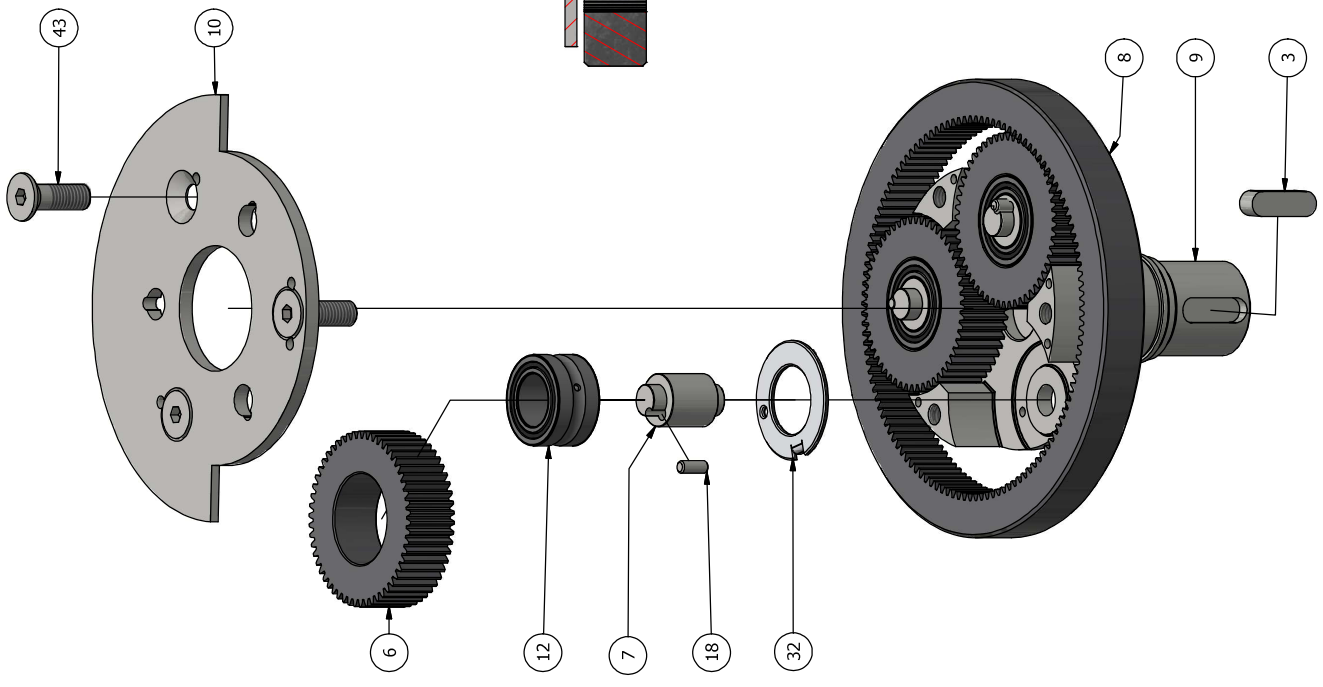


IMAGE SHOWING THE INTERNAL VIEW OF THE E-ROTOR WITH THE HOUSING MADE TRANSPARENT





E-ROTOR DRIVE ASSEMBLY

ITEM	PART DESCRIPTION	PART NUMBER	QTY
1	TAPER LOCK BUSH	1078	1
2	IN ROW ROTOR TINE MOUNT	8494	1
3	KEY 8X7X25	8821	1
4	MAGNET RING SENSOR	9807	1
5	ROTOR BLOCK	10725	1
6	ROTOR BLOCK SPUR GEAR	10733	3
7	PLANETARY GEAR SHAFT	10734	3
8	ROTOR BLOCK RING GEAR	10735	1
9	ROTOR SHAFT	10736	1
10	ROTOR SHAFT TOP PLATE	10737	1
11	SEALED BEARING	10739	1
12	NEEDLE ROLLER BEARING	10740	3
13	SHAFT SEAL 52 X 68 X 8 SINGLE LIP SEAL	10748	1
14	O RING 36 X 2.4	10749	1
15	CIRCUIT BOARD COVER	10929	1
16	E-ROTOR CAN BOARD	10940	1
17	E-ROTOR SPACER	10945	1
18	STUB SHAFT PIN	10968	3
19	PROXIMITY SENSOR BLOCK	11087	1
20	O-RING	11088	1
21	PROXIMITY SENSOR C/W NUTS	11089	2
22	GEAR BOX TOP	11101	1
23	E-ROTOR RING GEAR GASKET	11102	1
24	O-RING 2.62 X 164.78	11103	1
25	O-RING 2.62 X 158.43	11104	1
26	O-RING 2.62 X 145.73	11105	1
27	O-RING 2.62 X 145.73	11106	1
28	ELECTRIC MOTOR WITH GEAR SHAFT	11108	1
29	E-ROTOR TOP ENCODER MOUNT	11109	1
30	MOTOR CIRCUIT HOUSING	11110	1
31	MOTOR TOP COVER	11111	1
32	THRUST WASHER	11114	3
33	MAGNETIC PLUG	11117	1
34	VENT PLUG	11118	1
35	VENT PLUG NUT	11118.nut	1
36	MAGNET SENSOR RING	11129	1
37	RUBBER SEAL	11158	1
38	SHAFT SEAL 14 X 32 X 7 SINGLE LIP	11752	1
39	EROTOR MOUNT PLATE	11892	1
40	PLUG PROTECTION STOP	11893	1
41	CAN PLUG	120196	1
42	SOCKET SET SCREW, OVAL POINT 3/8" BSW x 5/8"	Bolt	1
43	BOLT M8 X 35 C/SUNK ALLEN HEAD BZP	Bolt M8 x 25 C/sunk Allen head Bzp	3
44	BOLT M12 X 1.5 X 45 Bzp	Bolt M12 x 1.5 x 45 Bzp	1
45	BOLT M12 X 35 C/SUNK ALLEN HEAD BZP	Bolt M12 x 35 C/sunk Allen head Bzp	4
46	BOLT SOCKET CAP M2.5 X 12 BZP	Bolt Socket Cap M2.5 x 12 BZP	4
47	BOLT SOCKET CAP M3 X 12 BZP	Bolt Socket Cap M3 x 12 BZP	8
48	BOLT SOCKET CAP M3 X 16 BZP	Bolt Socket Cap M3 x 16 BZP	2