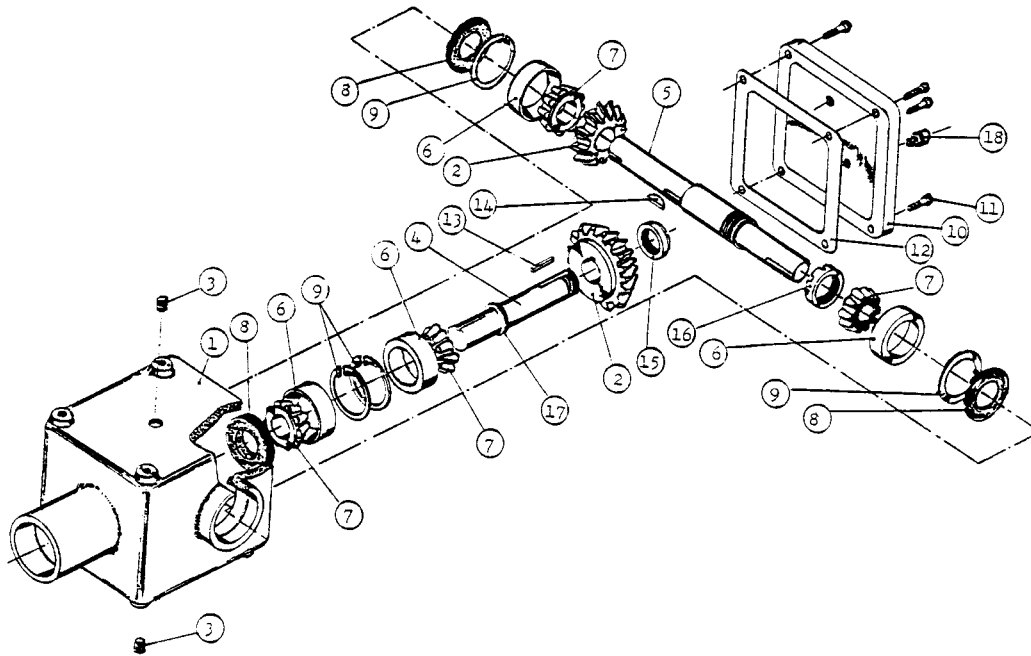


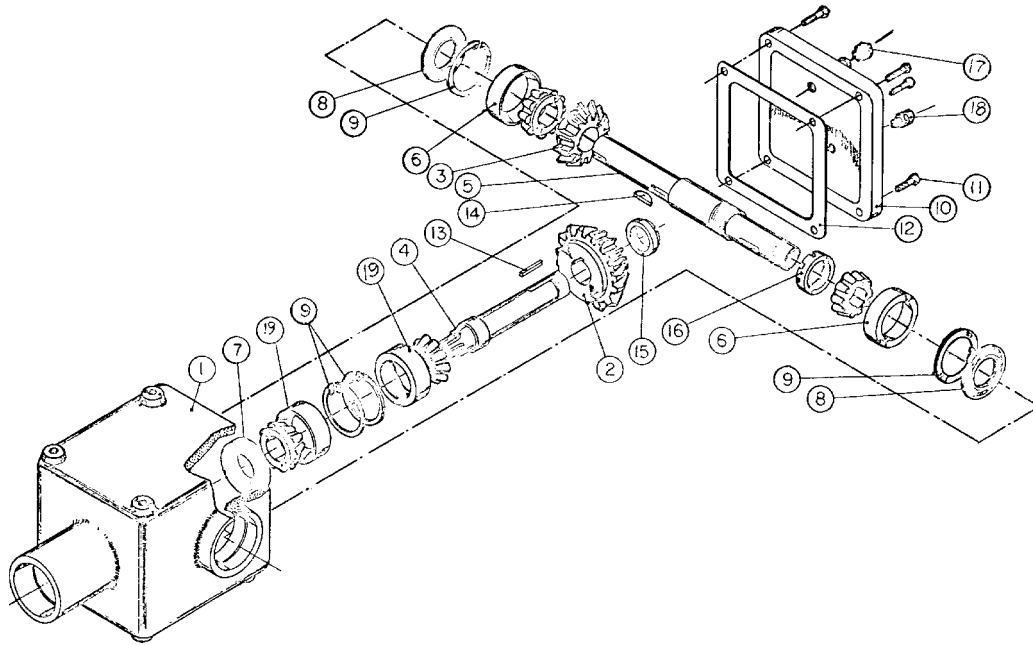
# **GEARBOXES**

## **PARTS LIST**

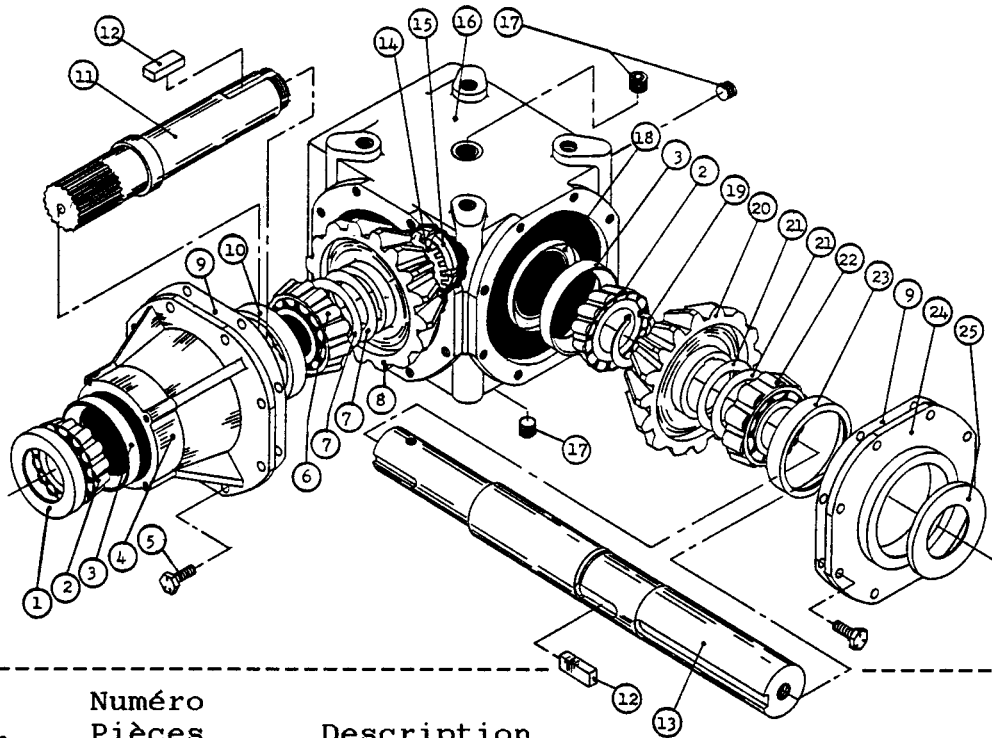
# 4821A



<u>Réf.</u>	<u>Numéro Pièces</u>	<u>Description</u>	<u>Qté.</u>
1	48107	Carter	1
2	48108	Engrenage trou 1"	2
3	Std.	Bouchon 3/8" N.P.T.	2
4	48109	Arbre d'entrée	1
5	48110	Arbre de sortie	1
6	4860	Roulement à rouleau : cuvette L44610	4
7	4859	Roulement à rouleau : couronne L44643	4
8	48111	Bague d'étanchéité	3
9	48112	Anneau d'arrêt	4
10	48113	Couvercle	1
11	Std.	Boulon 5/16" NC x 3/4" lg + rondelle de blocage	4
12	48114	Garniture	1
13	48115	Clavette 1/4" x 1/4" x 15/16" lg	1
14	48116	Demi-lune 1/4" x 7/8"	1
15	48117	Ecrou 1"	1
16	48118	Ecrou 1 1/8"	1
17	4866	Anneau d'arrêt	1
18	Std.	Bouchon 1/8" N.P.T.	1

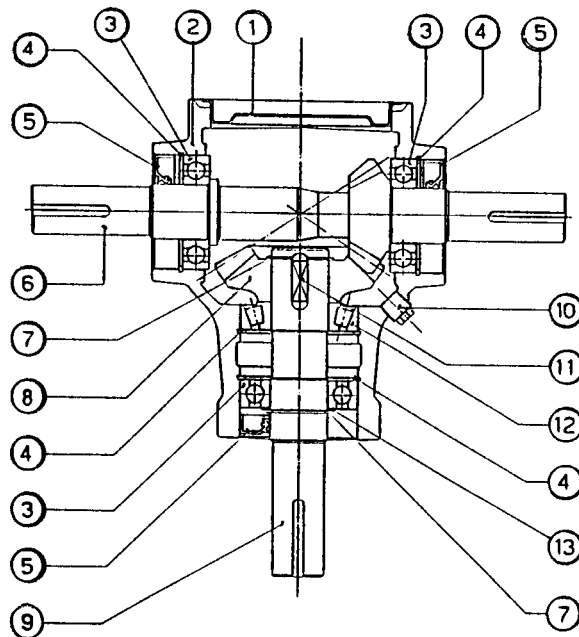


No.	Numéro	Modèle			Description
		180	186	TRC	
	<b>PIECE</b>				
1	18075	1	1	1	<b>CARTER</b>
2	18076	1	1	1	<b>ENGRENAGE 1 3/8" TROU</b>
3	18077	1	1	1	<b>ENGRENAGE 1 1/2" TROU</b>
4	18078	1	1	1	<b>ARBRE (ENTREE)</b>
5	18079	1	1	1	<b>ARBRE (SORTIE)</b>
6	18080	2	2	2	<b>ROULEMENT A ROULEAUX CONIQUE TIMKEN</b>
					<b>COURONNE No. 13687</b>
					<b>CUVETTE No. 13620</b>
7	18081	1	1	1	<b>BAGUE D'ETANCHEITE 1 1/4" No. K25</b>
8	18082	2	2	2	<b>BAGUE D'ETANCHEITE 1 1/2" No. K23</b>
9	18083	4	4	4	<b>ANNEAUX D'ARRET</b>
10	18084	1	1	1	<b>COUVERCLE</b>
11	18085	4	4	4	<b>BOULON HEX 5/16" X 5/8" LG.</b>
12	18086	1	1	1	<b>GARNITURE</b>
13	18087	1	1	1	<b>CLAVETTE 3/8" X 3/8" X 1 3/8" LG.</b>
14	18088	1	1	1	<b>CLAVETTE 3/8" X 1 1/4" (WOODRUFF)</b>
15	18089	1	1	1	<b>ECROU 1 3/8"</b>
16	18090	1	1	1	<b>ECROU 1 5/8"</b>
17	18091	1	1	1	<b>BOUCHON (NIVEAU) 3/8" N.P.T.</b>
18	18092	1	1	1	<b>BOUCHON (EVENT) 1/8" N.P.T.</b>
19	18093	2	2	2	<b>ROULEMENT A ROULEAUX CONIQUE TINKEN</b>
					<b>COURONNE No. 14137</b>
					<b>CUVETTE No. 14276</b>



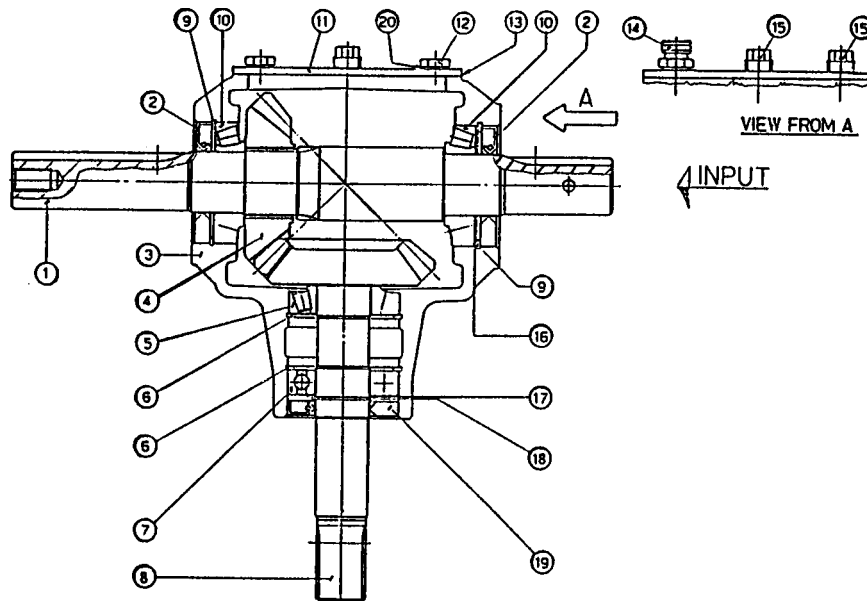
<u>Réf.</u>	<u>Numéro Pièces</u>	<u>Description</u>	<u>Qté.</u>
1	6314	Bague d'étanchéité 52 x 85 x 10	1
2	6315	Roulement 30209 : couronne	2
3	6317	Roulement 30209 : cuvette	2
4	6318	Manchon	1
5	6319	Boulon hex. M10 x 22	16
6	6320	Roulement 32209 : couronne	1
7	6321	Cable d'épaisseur	2
8	6322	Engrenage Z21	1
9	6323	Garniture	2
10	6324	Roulement 32209 : cuvette	1
11	6325	Arbre de sortie 1 3/4" Z20	1
12	6326	Clé B14 x 9 x 40	2
13	6327	Arbre d'entrée 1 3/4" rond	1
14	6328	Rondelle frein	1
15	6329	Ecrou à encoche M40 x 1.5	1
16	6330	Carter	1
17	6331	Bouchon d'huile 3/8" gas	3
18	6332	Protège poussière 45 x 72 x 8	1
19	6333	Anneau d'arrêt 50 UNI 7435	1
20	6334	Engrenage Z21	1
21	6335	Cale d'épaisseur	2
22	6336	Roulement 30210 : couronne	1
23	6337	Roulement 30210 : cuvette	1
24	6338	Couvercle	1
25	6339	Bague d'étanchéité 50 x 72 x 8"	1

# 6360 (T19)

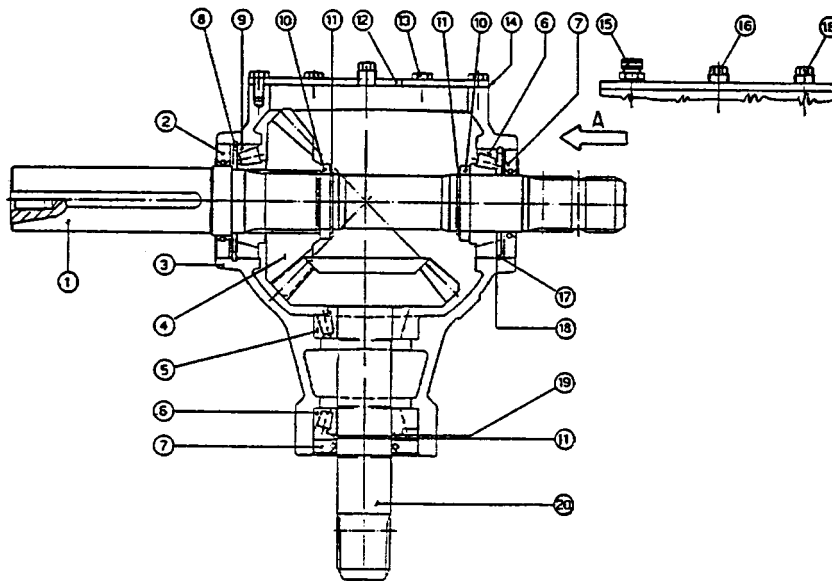


<u>Réf.</u>	<u>Numéro Pièces</u>	<u>Description</u>	<u>Qté.</u>
1	6361	Couvercle	1
2	6362	Carter	1
3	8056	Roulement no. 6207	3
4	6364	Anneau de retenue	4
5	8053	Joint étanche 35 x 72 x 12	3
6	6366	Arbre long	1
7	6367	Anneau de retenue	2
8	6368	Engrenage	1
9	6369	Arbre court	1
10	6370	Bouchon de vidange	1
11	6371	Clavette	1
12	8050	Roulement no. 30207 assemblé	1
13	6373	Espaceur "kit"	1

# 6375 (T27D)

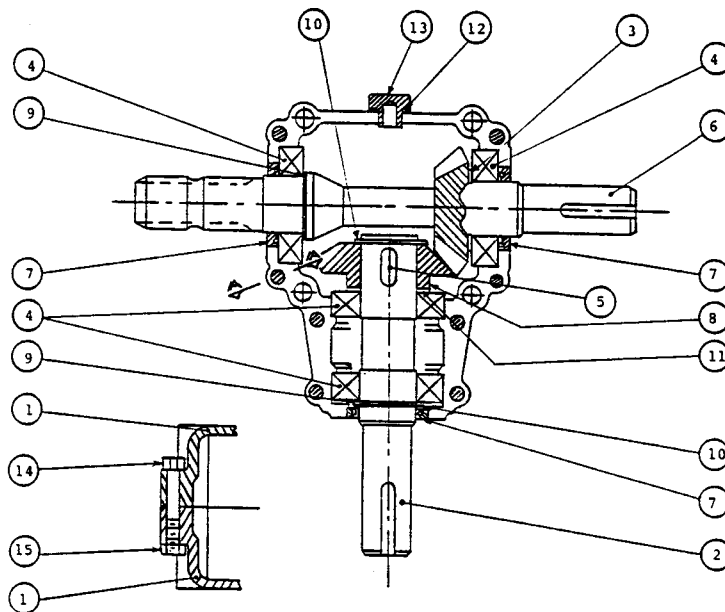


<u>Réf.</u>	<u>Numéro Pièces</u>	<u>Description</u>	<u>Qté.</u>
1	6376	Arbre de sortie 1 1/2" rond	1
2	8046	Joint étanche 40 x 80 x 10	2
3	6377	Carter	1
4	6378	Engrenage Z16	1
5	8050	Roulement à rouleaux no. 30207	1
6	6379	Anneau d'arrêt	2
7	8056	Roulement à bille no. 6207	1
8	6380	Arbre avec engrenage Z16	1
9	6381	Anneau d'arrêt	2
10	8044	Roulement à rouleau no. 30208	2
11	6382	Couvercle	1
12	8062	Boulon hexagonal M10 x 14	4
13	6383	Garniture	1
14	8065	Bouchon avec évent	1
15	8064	Bouchon	2
16	6386	Espaceur "kit"	1
17	6387	Espaceur "kit"	1
18	6388	Anneau d'arrêt	1
19	8053	Joint étanche 35 x 72 x 10	1



<u>Réf.</u>	<u>Numéro Pièces</u>	<u>Description</u>	<u>Qté.</u>
1	6391	Arbre d'entrée 1 3/4" - 20	1
2	6392	Joint étanche 55 x 90 x 10	2
3	6393	Carter	1
4	6394	Engrenage Z18	1
5	6410	Roulement à rouleaux no. 32209 ass.	1
6	6411	Roulement à rouleaux no. 30209 ass.	2
7	6395	Joint étanche 45 x 85 x 10	2
8	6396	Anneau de retenue I90	1
9	6412	Roulement à rouleaux no. 30210 ass.	1
10	6397	Espaceur	2
11	6398	Anneau de retenue E45	2
12	6399	Couvercle	1
13	6400	Boulon M8 x 16	6
14	6401	Garniture	1
15	8065	Bouchon avec évent	1
16	8064	Bouchon de vidange	2
17	6404	Anneau de retenue I85	1
18	6405	Espaceur "kit" 84,8 mm	1
19	6406	Espaceur "kit" 45,2 mm	1
20	6407	Engrenage Z18 avec arbre	1

# 6413 (T281)

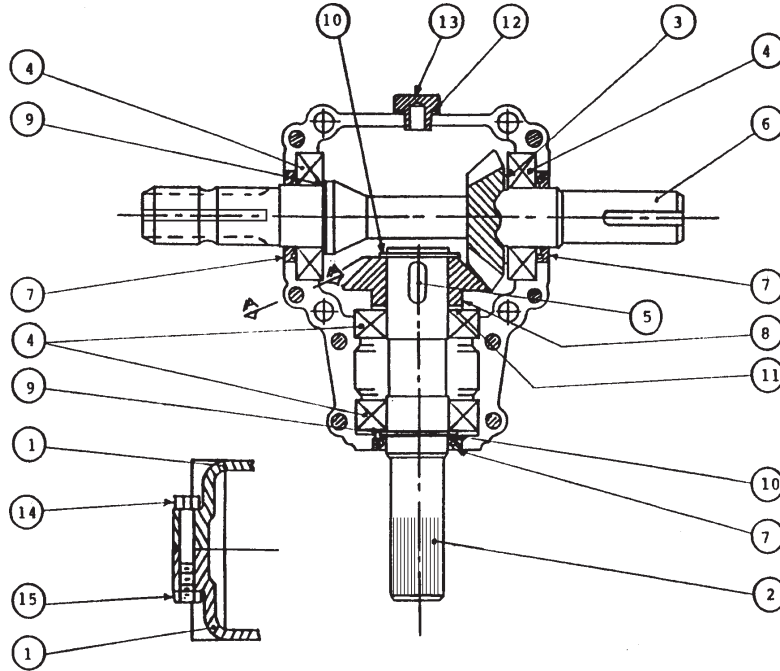


<u>Réf.</u>	<u>Numéro Pièces</u>	<u>Description</u>	<u>Qté.</u>
1	6414	Carter	2
2	6415	Arbre de côté 1 1/4" rond	1
3	6416	Espaceur 35.3 x 48	1
4	8056	Roulement à rouleaux no. 6207	4
5	6418	Clavette 10 x 8 x 30	1
6	6419	Arbre d'entrée	1
7	6420	Bague d'étanchéité 35 x 52 x 7	3
8	6421	Engrenage Z19	1
9	6422	Espaceur 35.3 x 0.5	2
10	6423	Anneau d'arrêt 35 UN17435	2
11	6424	Espaceur 35.3 x 0.6	1
12	6425	Joint étanche	1
13	6426	Bouchon	1
14	6427	Boulon M8 x 55	8
15	6428	Ecrou hexagonal M8	8



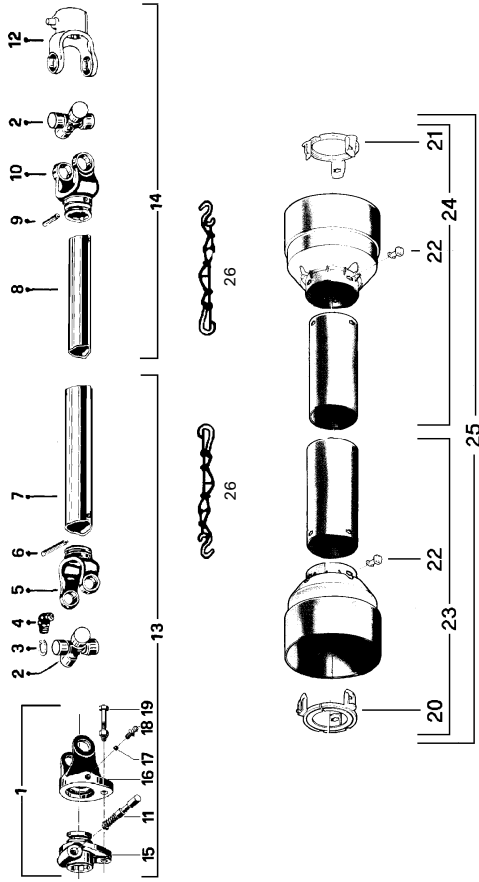
# GEAR BOX # 6451 (T281)

Oil volume required: 0.5 liter.  
Use SAE 80W90 oil or equivalent.



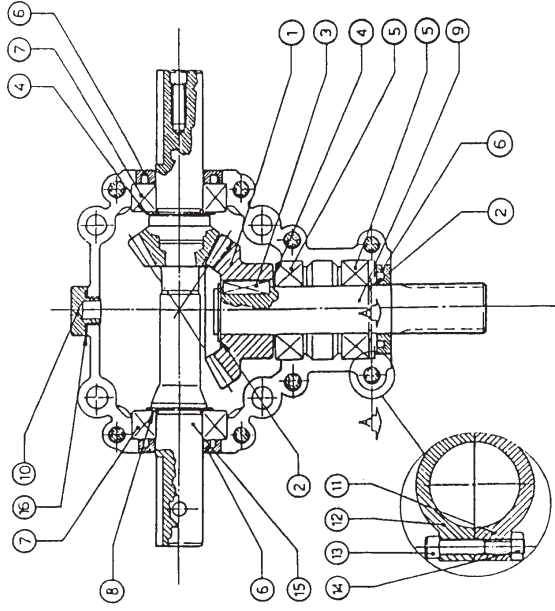
REF.	PART #	DESCRIPTION	QTY
1	6414	Casing .....	2
2	6429	Side shaft (1 ¼" - 19 splines) .....	1
3	6416	Spacer 35,3 x 48 .....	1
4	6207-2RS	Ball bearing .....	4
5	6418	Key 10 x 8 x 30 .....	1
6	6419	Impeller shaft (1 ¼" & 1 3/8" - 6 splines) .....	1
7	6420	Seal 35 x 52 x 7 .....	3
8	6421	Gear Z19 .....	1
9	6422	Spacer 35.3 x 0.5 .....	2
10	6423	Snap ring 35 UNI7435 .....	2
11	6424	Spacer 35.3 x 0.6 .....	1
12	6425	Oil seal .....	1
13	6426	Oil plug (oil level) .....	1
14	6427	Bolt M8 x 55 .....	8
15	6428	Nut M8 .....	8

# P.T.O. SHAFT #6545 (T20)



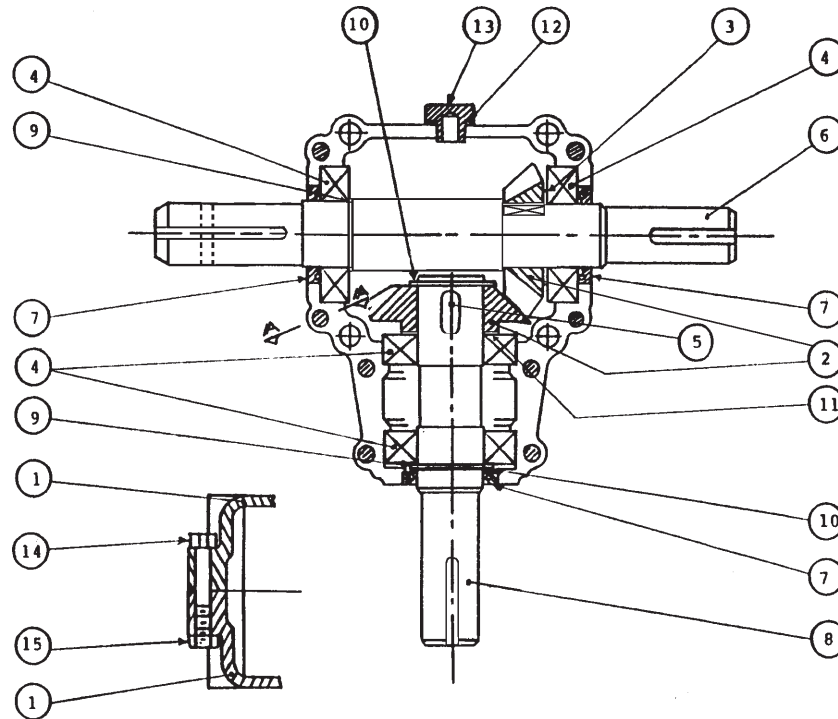
REF.	PART #	DESCRIPTION	QTY
1	6201	Quick disconnect yoke assembly	1
2	6208	U-joint + 4 retaining ring + 1 grease fitting	2
3	6203	Retaining ring	8
4	8110	Grease fitting	2
5	6430	Yoke for outer tube	1
6	6344	Pin spring	1
7	6431	Outer tube	1
8	6432	Inner tube	1
9	6433	Pin spring	1
10	6434	Yoke for inner tube	1
11	8068-E	Yoke stopper 1 3/8"	1
12	6215	Yoke with round hole 1"	1
13	6435	P.T.O. section, side with safety shear bolt, outer part, without protector	1
14	6546	P.T.O. section, side without safety shear bolt, inner part, without protector	1
15	6202	Adaptor	1
16	6204	Yoke and shearplate	1
17	6205	Ball	17
18	6206	Grease fitting	1
19	6207	Safety shear bolt M6 x 40mm	1
20	6218-E	Bearing ring for outer guard tube	1
21	6219-E	Bearing ring for inner guard tube	1
22	8109	Stopper	6
23	6220	Outer shield	1
24	6221	Inner shield	1
25	6222	Complete shield	1
26	8308	Safety chain	2

# GEAR BOX #6550



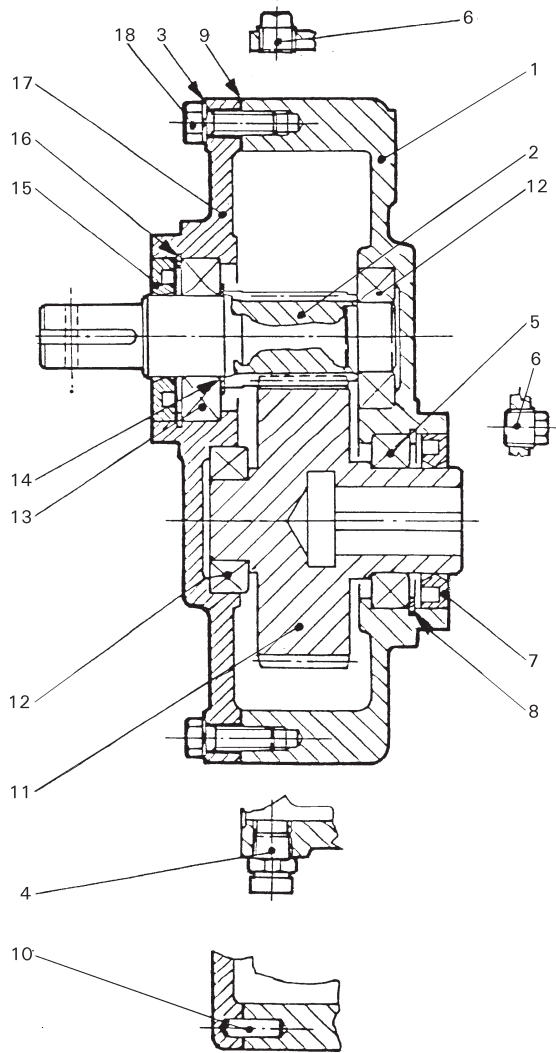
REF.	PART #	DESCRIPTION	QTY
1	6547	Gear Z24	1
2	6548	Outside circlip	2
3	6549	Parallel key 8 x 7 x 25	1
4	6562	Shim	2
5	6205-2RS	Bearing 6205	2
6	6552	Oil seal	3
7	6205-2RSx1"	Bearing	2
8	6554	Shim	1
9	6555	Side shaft 1" - 15 splines	1
10	6556	Plug 3/8" GAS	1
11	6557	Casing A	1
12	6558	Casing A	1
13	6559	Bolt M8 x 45 8.8	8
14	6428	Nex. nut M8 8	8
15	6560	Pinion shaft Z16 for impeller (1" & 1")	1
16	6425	O-ring OR-3062	1

# GEAR BOX 70060-03292



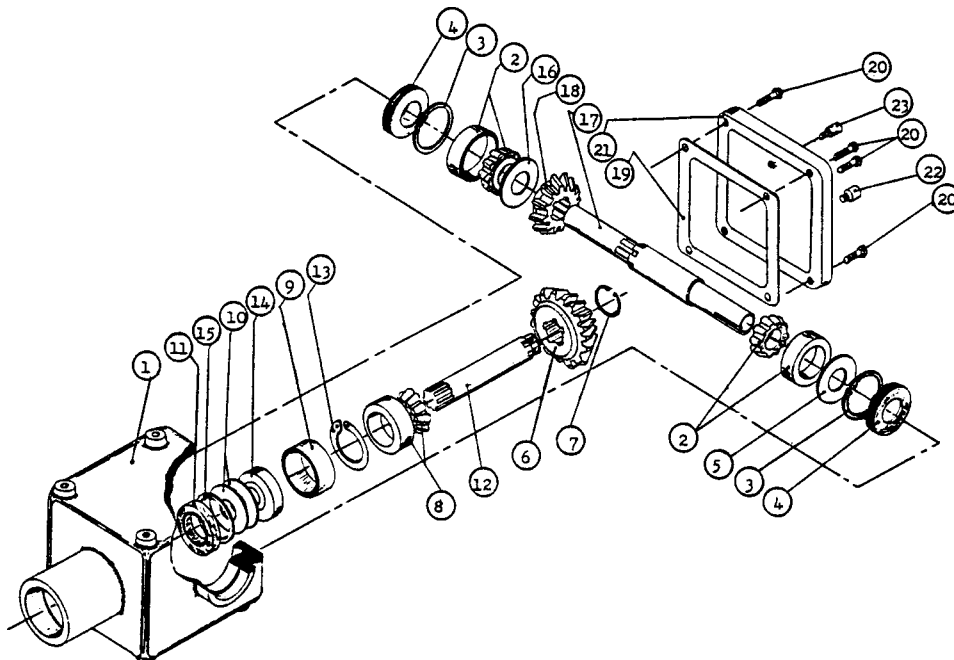
REF.	PART #	DESCRIPTION	QTY
1	70060-03358	Casing .....	2
2	70060-03359	Gear .....	2
3	70060-03353	Shim .....	1
4	70060-03352	Bearing .....	4
5	70060-03360	Key .....	2
6	70060-03361	Input / Impeller shaft .....	1
7	70060-03362	Oil seal .....	3
8	70060-03363	Output shaft .....	1
9	70060-03364	Shim .....	1
10	70060-03365	Snap ring .....	2
11	70060-03366	Shim .....	2
12	70060-03367	O-ring .....	1
13	70060-03368	Plug .....	1
14	01053-50855	Bolt (M8 x 55-8,8) .....	8
15	02056-50080	Nut (M8, hex.-8) .....	8

# REDUCTION GEAR BOX 70060-03294



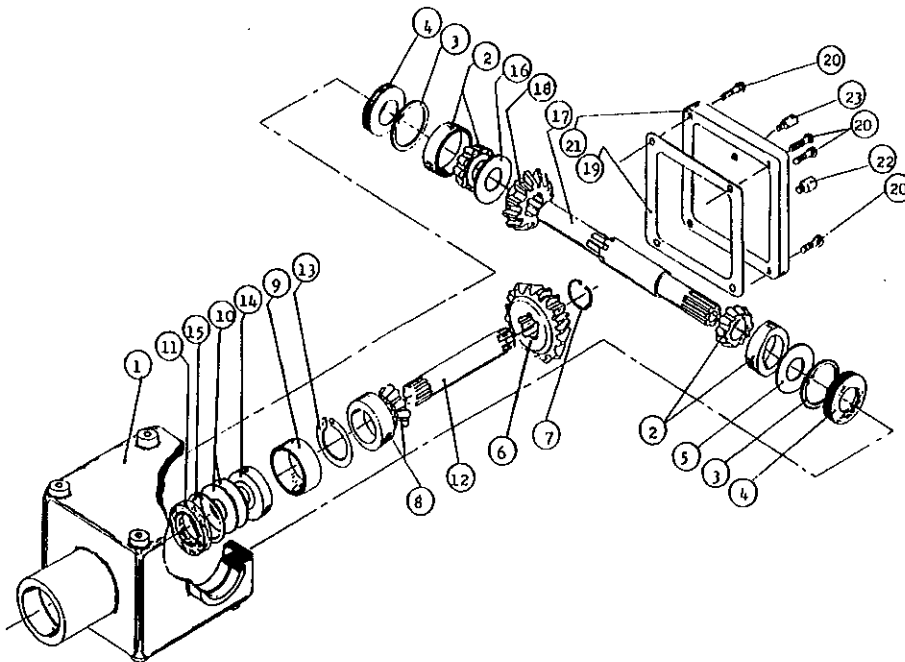
REF.	PART #	DESCRIPTION	QTY
1	70060-03340	Casing .....	1
2	70060-03753	Pinion - F-series model (Z12) .....	1
3	04512-60100	Lock washer (10 mm) .....	6
4	70060-03343	Oil filler plug .....	1
5	70060-03344	Bearing .....	1
6	70060-03345	Plug .....	2
7	70060-03346	Oil seal .....	1
8	70060-03347	Snap ring .....	1
9	70060-03348	Gasket .....	1
10	70060-03349	Spring pin .....	2
11	70060-03754	Gear - F-series model (Z43) .....	1
12	70060-03351	Bearing .....	2
13	70060-03352	Bearing .....	1
14	70060-03353	Shim .....	1
15	70060-03354	Oil seal .....	1
16	70060-03355	Snap ring .....	1
17	70060-03356	Cover .....	1
18	01053-51030	Bolt (M10 x 30 mm- 8,8, hex.) .....	6

**10**



<u>Réf.</u>	<u>Numéro Pièces</u>	<u>Description</u>	<u>Qté.</u>
1	8043	Carter	1
2	8044	Roulement à rouleau no. 30208	2
3	8045	Anneau d'arrêt intérieur 80 mm	2
4	8046	Bague d'étanchéité 40 x 80 x 12 mm	2
5	8047	Rondelle d'ajustement	1
6	8048	Engrenage Z18	1
7	8049	Anneau d'arrêt extérieur 40 mm	1
8	8050	Roulement à rouleaux no. 30207	1
9	8051	Espaceur	1
10	8052	Rondelle d'ajustement	2
11	8053	Bague d'étanchéité 35 x 72 x 12 mm	1
12	8054	Arbre d'entrée	1
13	8055	Anneau d'arrêt extérieur 35 mm	1
14	8056	Roulement à rouleaux no. 6207	1
15	8057	Anneau d'arrêt intérieur 72 mm	1
16	8058	Rondelle d'ajustement	1
17	8059	Arbre de sortie 1 1/2" rond	1
18	8060	Engrenage Z18	1
19	8061	Garniture	1
20	8062	Boulon hexagonal M10 x 14	4
21	8063	Couvercle	1
22	8064	Bouchon	1
23	8065	Bouchon avec évent	1

# GEAR BOX # 8115 (T27D)

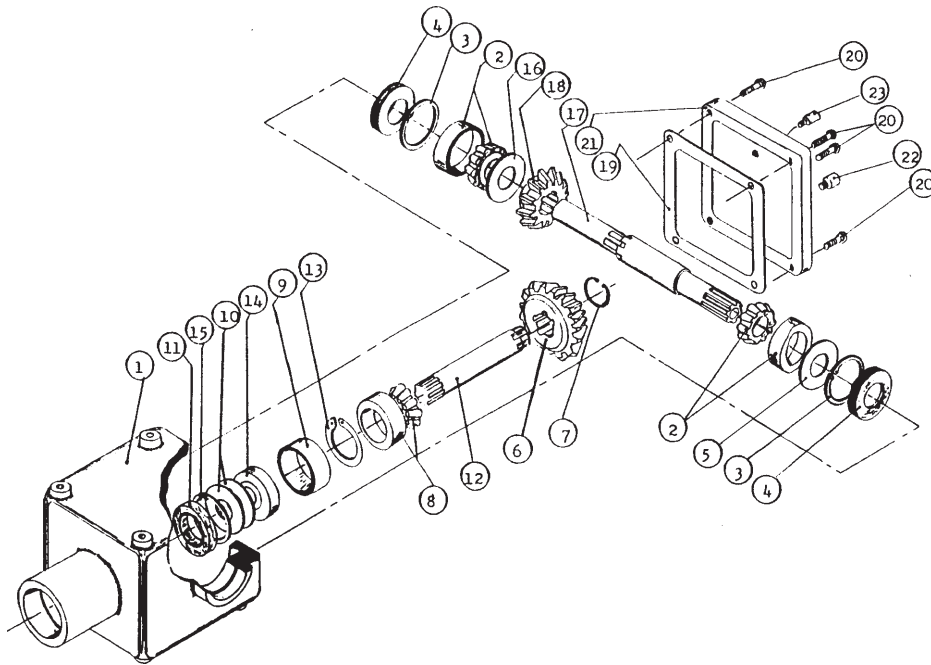


REF.	PART #	DESCRIPTION	QTY
1	8043	Casing .....	1
2	8044	Roller bearing no. 30208 .....	2
3	8045	Inside circlip 80mm .....	2
4	8046	Oil seal 40 x 80 x 12mm .....	2
5	8047	Adjusting washer .....	1
6	8048	Gear Z18 .....	1
7	8049	Outside circlip 40mm .....	1
8	8050	Roller bearing no. 30207 .....	1
9	8051	Spacer ring .....	1
10	8052	Adjusting washer .....	2
11	8053	Oil seal 35 x 72 x 12mm .....	1
12	8054	Side shaft (1 1/4" - 19 splines) .....	1
13	8055	Outside circlip 35mm .....	1
14	8056	Ball bearing no. 6207 .....	1
15	8057	Inside circlip 72mm .....	1
16	8058	Adjusting washer .....	1
17	8116	Impeller shaft (1 1/2" & 1 3/8" - 6 splines) .....	1
18	8060	Gear Z-18 .....	1
19	8061	Gasket .....	1
20	8062	Bolt M10 x 14mm .....	4
21	8063	Cover .....	1
22	8064	Oil plug .....	1
23	8065	Oil filler plug .....	1

**10**

# GEAR BOX # 8251 (T27D)

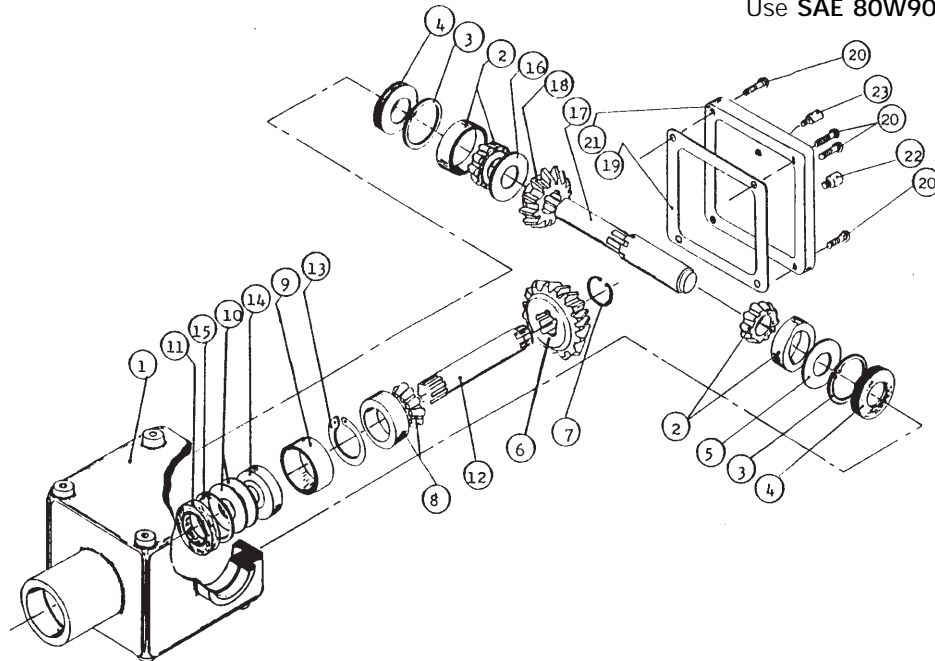
Oil volume required: 1.2 liters.  
Use SAE 80W90 oil or equivalent.



REF.	PART #	DESCRIPTION	QTY
1	8043	Casing .....	1
2	30208-A	Roller bearing .....	2
3	8045	Inside circlip 80mm .....	2
4	8046	Oil seal 40 x 80 x 12mm .....	2
5	8047	Adjusting washer .....	1
6	8048	Gear Z18 .....	1
7	8049	Outside circlip 40mm .....	1
8	30207-A	Roller bearing no. 30207 .....	1
9	8051	Spacer ring .....	1
10	8052	Adjusting washer .....	2
11	8053	Oil seal 35 x 72 x 12mm .....	1
12	8054	Side shaft (1 1/4" - 19 splines) .....	1
13	8055	Outside circlip 72mm .....	1
14	6207-2RS	Ball bearing no. 6207 .....	1
15	8057	Inside circlip 35mm .....	1
16	8058	Adjusting washer .....	1
17	8252	Impeller shaft (1.575" & 1 3/8" - 6 splines) .....	1
18	8060	Gear Z18 .....	1
19	- - -	Use silicone caulking .....	-
20	8062	Bolt M10 x 14mm .....	4
21	8063	Cover .....	1
22	8064	Oil plug (oil level) .....	1
23	8065	Oil filler plug .....	1

# GEAR BOX # 190-01491 (T27D modified)

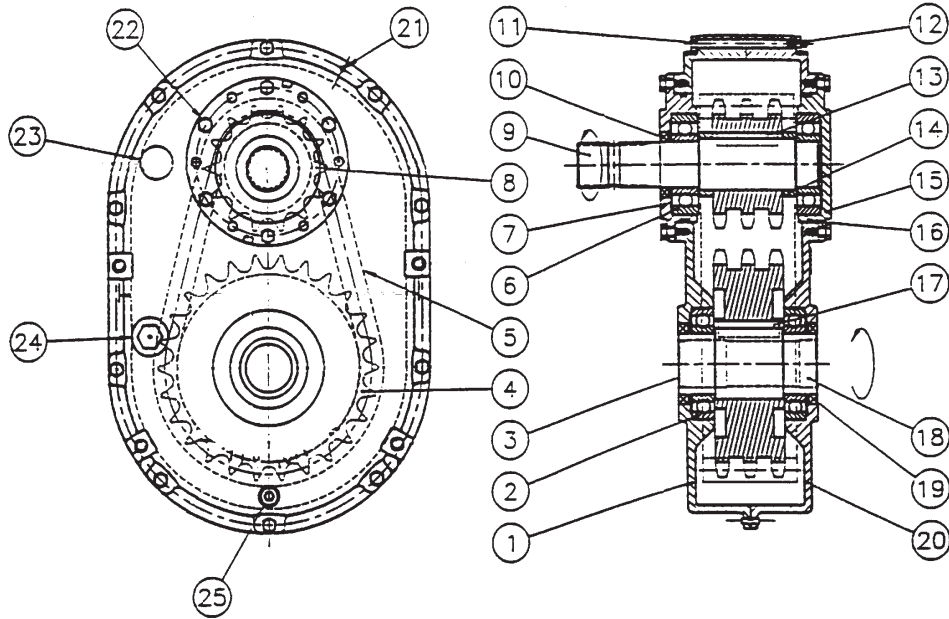
Oil volume required: 1.2 liters  
Use SAE 80W90 oil or equivalent.



REF.	PART #	DESCRIPTION	QTY
1	8043	Casing .....	1
2	30208-A	Roller bearing .....	2
3	8045	Inside circlip 80mm .....	2
4	8046	Oil seal 40 x 80 x 12mm .....	2
5	8047	Adjusting washer .....	1
6	8048	Gear Z18 .....	1
7	8049	Outside circlip 40mm .....	1
8	30207-A	Roller bearing .....	1
9	8051	Spacer ring .....	1
10	8052	Adjusting washer .....	2
11	8053	Oil seal 35 x 72 x 12mm .....	1
12	8054	Side shaft (1¼" - 19 splines) .....	1
13	8055	Inside circlip 72mm .....	1
14	6207-2RS	Ball bearing .....	1
15	8057	Outside circlip 35mm .....	1
16	8058	Adjusting washer .....	1
17	190-01492	Impeller shaft 1.575" .....	1
18	8060	Gear Z-18 .....	1
19	- - -	Use silicone caulking .....	-
20	8062	Bolt M10 x 14mm .....	4
21	8063	Cover .....	1
22	8064	<b>Oil level plug</b> .....	1
23	8065	Vent plug .....	1

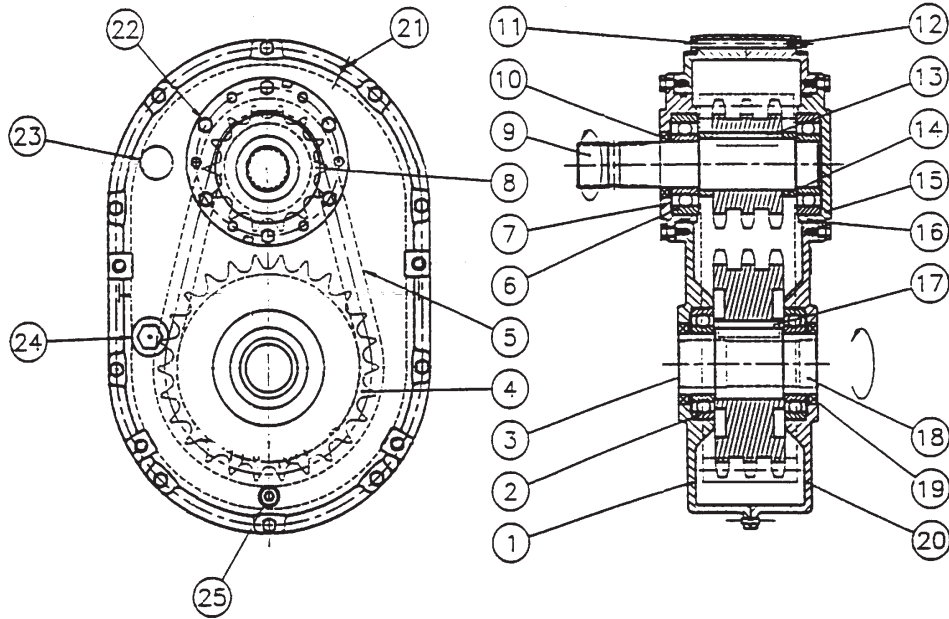


# REDUCTION GEAR BOX # 8348

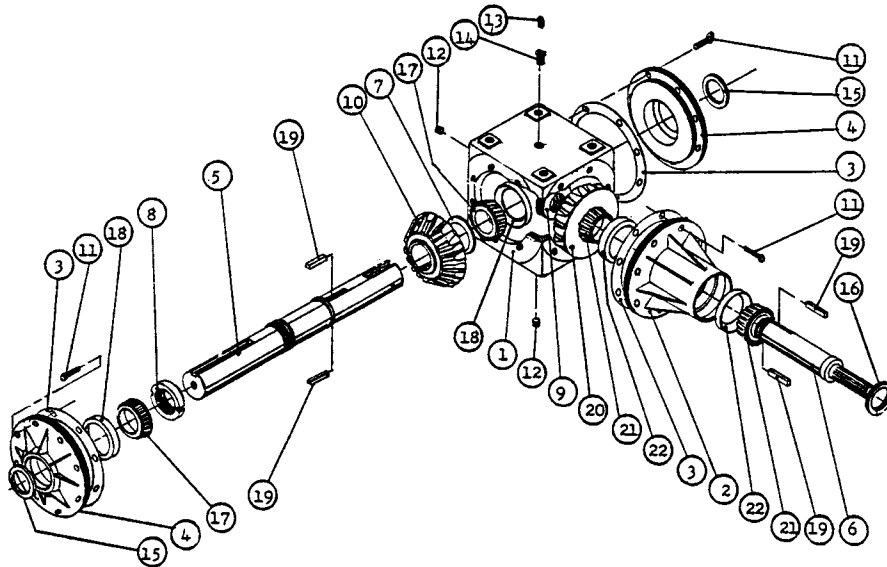


REF.	PART #	DESCRIPTION	QTY
1	9546	Casing with plug .....	1
2	6212-RS	Bearing 6212 .....	2
3	9547	Seal cover (47 x 7) .....	1
4	9548	Sprocket 80-3A26 .....	1
5	9549	Chain 80-3 x 36" lg .....	1
6	6309-RS	Bearing 6309 .....	2
7	9550	Input cover with hole .....	1
8	9551	Sprocket 80-3A14 .....	1
9	8349	Input shaft 1 3/8"-6 splines .....	1
10	9553	Oil seal (45x65x8) TC double lips .....	1
11	300-34490	Bolt 5/16" NC x 4 1/2" lg .....	10
12	336-34000	Nut 5/16" NC .....	10
13	9554	Square key 1/2" x 2 1/2" .....	1
14	9555	Spacer (2 - 2 3/8 - 0.568) .....	2
15	9556	Input cover w/o hole .....	1
16	9557	O-ring AS-248 .....	2
17	9558	Square key 5/8" x 2 1/2" .....	1
18	8350	Output shaft 1 3/8"-6 splines .....	1
19	9560	Oil seal (60 x80x10) TC double lips .....	2
20	9561	Casing w/o plug .....	1
21	9562	Slotted spring pin 3/16" x 3/4" .....	2
22	300-30220	Bolt 3/16" NC x 3/4" lg .....	12
23	9563	Air vent 1/2" NPT .....	1
24	9564	Sight glass 3/4" NPT (oil level) .....	1
25	9565	Drain plug 1/2" NPT .....	1

# REDUCTION GEAR BOX # 8348

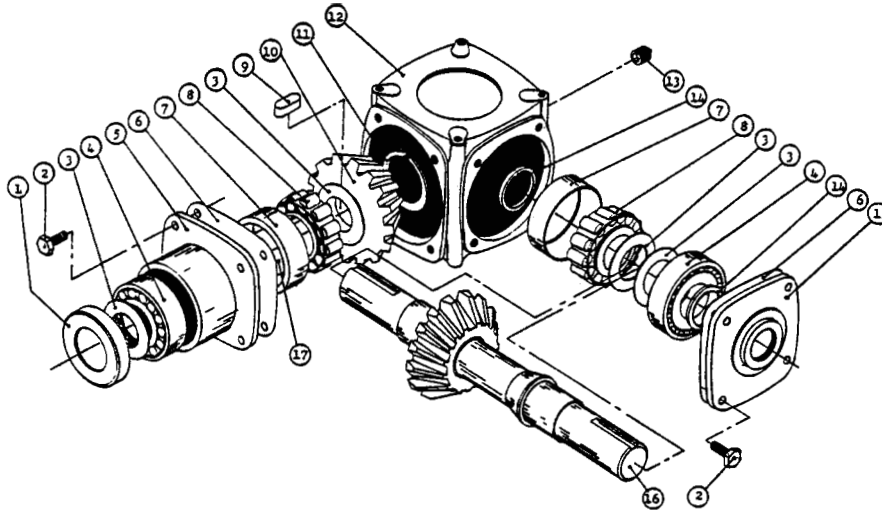


REF.	PART #	DESCRIPTION	QTY
1	9546	Casing with plug .....	1
2	6212-RS	Bearing 6212 .....	2
3	9547	Seal cover (47 x 7) .....	1
4	9548	Sprocket 80-3A26 .....	1
5	9549	Chain 80-3 x 36" lg .....	1
6	6309-RS	Bearing 6309 .....	2
7	9550	Input cover with hole .....	1
8	9551	Sprocket 80-3A14 .....	1
9	8349	Input shaft 1 3/8"-6 splines .....	1
10	9553	Oil seal (45x65x8) TC double lips .....	1
11	300-34490	Bolt 5/16" NC x 4 1/2" lg .....	10
12	336-34000	Nut 5/16" NC .....	10
13	9554	Square key 1/2" x 2 1/2" .....	1
14	9555	Spacer (2 - 2 3/8 - 0.568) .....	2
15	9556	Input cover w/o hole .....	1
16	9557	O-ring AS-248 .....	2
17	9558	Square key 5/8" x 2 1/2" .....	1
18	8350	Output shaft 1 3/8"-6 splines .....	1
19	9560	Oil seal (60 x80x10) TC double lips .....	2
20	9561	Casing w/o plug .....	1
21	9562	Slotted spring pin 3/16" x 3/4" .....	2
22	300-30220	Bolt 3/16" NC x 3/4" lg .....	12
23	9563	Air vent 1/2" NPT .....	1
24	9564	Sight glass 3/4" NPT (oil level) .....	1
25	9565	Drain plug 1/2" NPT .....	1



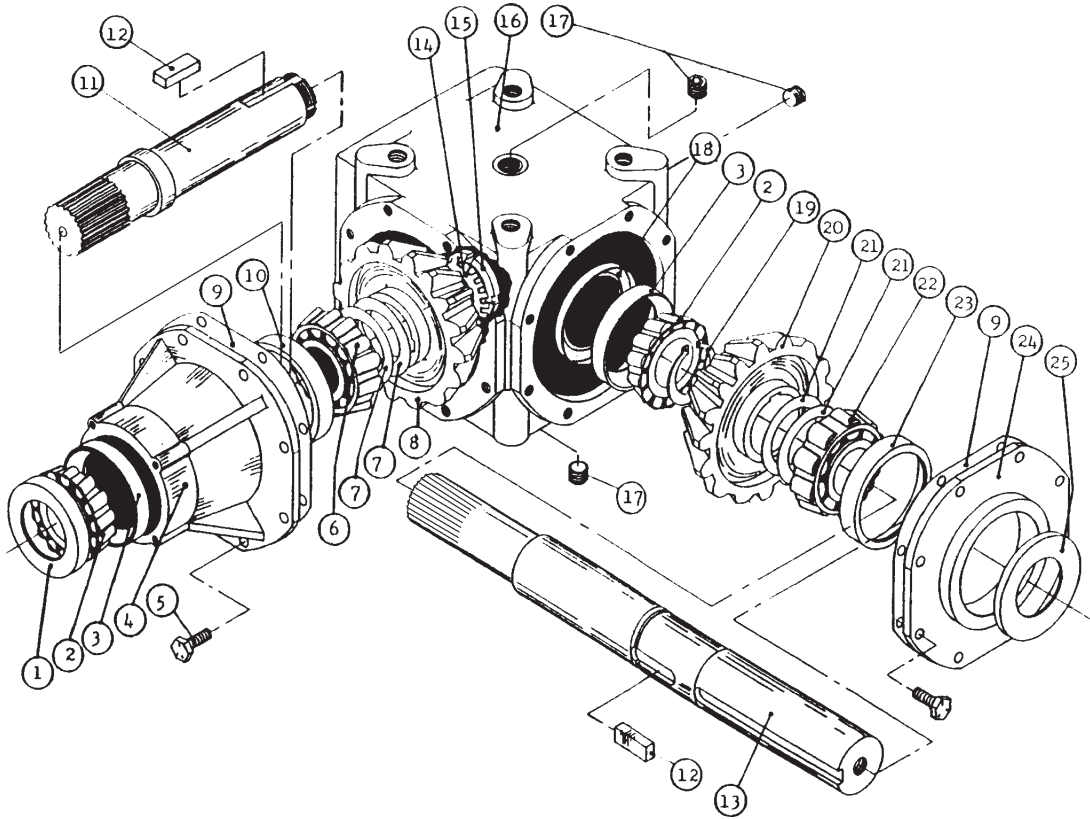
<u>Réf.</u>	<u>Numéro Pièces</u>	<u>Description</u>	<u>Qté.</u>
1	9230	Carter	1
2	9231	Moyeu	1
3	9232	Garniture	1
4	9233	Couvercle	2
5	9234	Arbre de fanne	1
6	9235	Arbre de côté	1
7	9236	Espaceur	1
8	9237	Ecrou d'ajustement 2 1/4" - 18 UNS	1
9	9238	Ecrou d'ajustement 1 3/4" 18 UNS	1
10	9239	Engrenage 19 dents	1
11	Std.	Boulon 1/2" NC x 1 1/4" lg + rondelle de blocage	24
12	9240	Bouchon 3/8" NPT	2
13	9241	Bouchon avec évent 1/8" NPT	1
14	9242	Réduit 3/8" - 1/8"	1
15	9243	Bague d'étanchéité no.471424	2
16	9244	Bague d'étanchéité no.417474	1
17	9245	Roulement à rouleau : couronne no. LM 104949	2
18	9246	Roulement à rouleau : cuvette no. LM 104912	2
19	9247	Clavette 3/8" x 1 1/2" lg	4
20	9248	Engrenage 19 dents	1
21	9249	Roulement à rouleau : couronne no. 25580	2
22	9250	Roulement à rouleau : cuvette no. 25520	2

# 9268 (T19A)



<u>Réf.</u>	<u>Numéro Pièces</u>	<u>Description</u>	<u>Qté.</u>
1	8053	Bague d'étanchéité 35 x 72 x 10	1
2	9252	Ecrou hexagonal M12 x 25	8
3	9253	Cale d'espacement	4
4	8056	Roulement à bille no. 6207	2
5	9255	Manchon	1
6	9256	Joint d'étanchéité	1
7	8050	Roulement no. 30207	2
9	9259	Clé	1
10	9260	Engrenage Z19	1
11	9261	Anneau de retenue	2
12	9262	Carter	1
13	9263	Bouchon de vidange 3/8" gas	1
14	6420	Bague d'étanchéité 35 x 52 x 7	2
15	9265	Couvercle	1
16	9266	Arbre long avec engrenage Z13 x 1 1/4"	1
17	9267	Arbre court	1

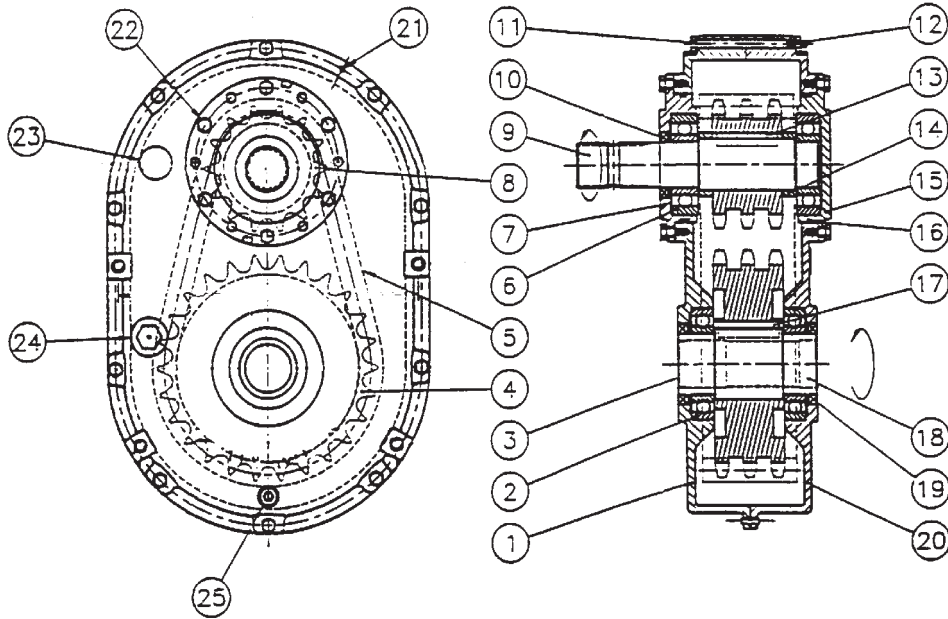
# GEAR BOX # 9307 (T279)



REF.	PART #	DESCRIPTION	QTY
1	6314	Oil seal 52 x 85 x 10 .....	1
2	6315	Bearing 30209: cone .....	2
3	6317	Bearing 30209: cup .....	2
4	6318	Extension .....	1
5	6319	Bolt M10 x 22 .....	16
6	6320	Bearing 32209: cone .....	1
7	6321	Shim .....	2
8	6322	Gear Z21 .....	1
9	6323	Gasket .....	2
10	6324	Bearing 32209: cup .....	1
11	6325	Side shaft Z20 (1 3/4" - 20 splines) .....	1
12	6326	Key B14 x 9 x 40 .....	2
13	9345	Impeller shaft (2" & 1 3/4" - 20 splines) .....	1
14	6328	Spring washer .....	1
15	6329	Lock nut M40 x 1.5 H9 .....	1
16	6330	Casing .....	1
17	6331	Plug 3/8" gas .....	3
18	6332	Dust excluder 45 x 72 x 8 .....	1
19	6333	External circlip 50 UNI7435 .....	1
20	6334	Gear Z21 .....	1
21	6335	Shim .....	2
22	6336	Bearing 30210: cone .....	1
23	6337	Bearing 30210: cup .....	1
24	6338	Cover .....	1
25	6339	Oil seal 50 x 72 x 8 .....	1
2 + 3	6411	Roller bearing no. 30209 .....	2
6 + 10	6410	Roller bearing no. 32209 .....	1
22 + 23	6412	Roller bearing no. 30210 .....	1

10

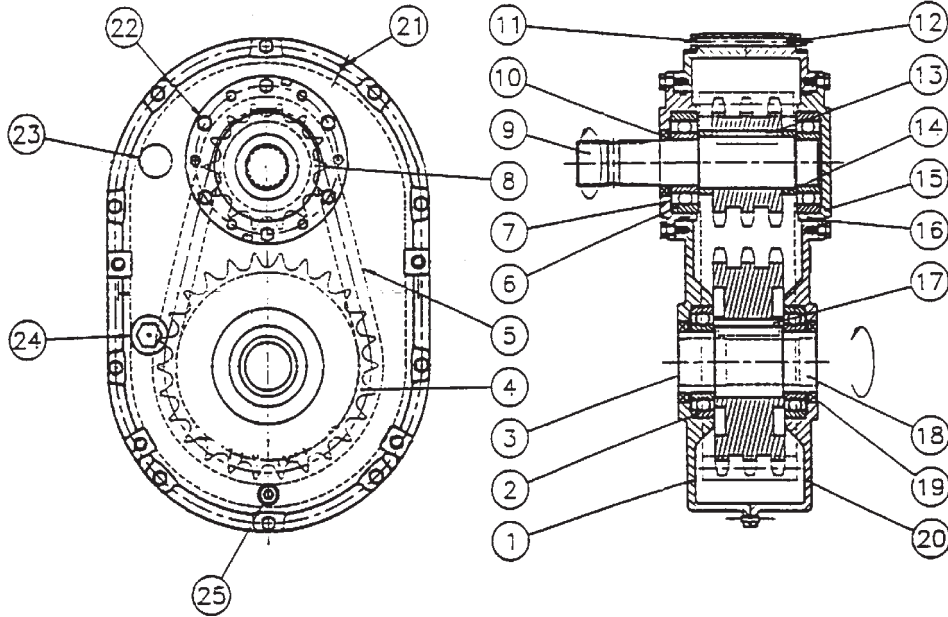
# REDUCTION GEAR BOX # 9575, 8348



REF.	PART #	DESCRIPTION	QTY	
			9575	8348
1	9546	Casing with plug .....	1	1
2	6212-RS	Bearing 6212 .....	2	2
3	9547	Seal cover (47 x 7) .....	1	1
4	9548	Sprocket 80-3A26 .....	1	1
5	9549	Chain 80-3 x 36" lg .....	1	1
6	6309-RS	Bearing 6309 .....	2	2
7	9550	Input cover with hole .....	1	1
8	9551	Sprocket 80-3A14 .....	1	1
9	9552	Input shaft 1 3/4"-20 splines .....	1	-
9	8349	Input shaft 1 3/8"-6 splines .....	-	1
9	9553	Oil seal (45x65x8) TC double lips .....	1	1
11	Std.	Bolt 5/16" NC x 4 1/2" lg .....	10	10
12	Std.	Nut 5/16" NC .....	10	10
13	9554	Square key 1/2" x 2 1/2" .....	1	1
14	9555	Spacer (2 - 2 3/8 - 0.568) .....	2	2
15	9556	Input cover w/o hole .....	1	1
16	9557	O-ring AS-248 .....	2	2
17	9558	Square key 5/8" x 2 1/2" .....	1	1
18	9559	Output shaft 1 3/4"-20 splines .....	1	-
18	8350	Output shaft 1 3/8"-6 splines .....	-	1
19	9560	Oil seal (60 x80x10) TC double lips .....	2	2
20	9561	Casing w/o plug .....	1	1
21	9562	Slotted spring pin 3/16" x 3/4" .....	2	2
22	Std.	Bolt 3/16" NC x 3/4" lg .....	12	12
23	9563	Air vent 1/2" NPT .....	1	1
24	9564	Sight glass 3/4" NPT .....	1	1
25	9565	Drain plug 1/2" NPT .....	1	1

10

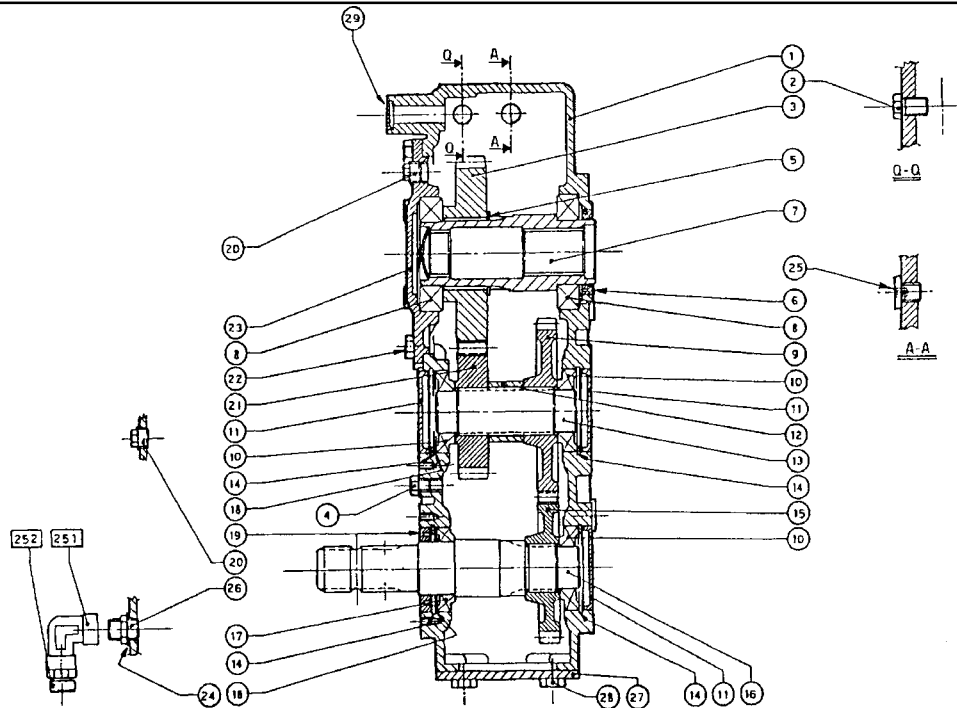
# REDUCTION GEAR BOX # 9575, 8348



REF.	PART #	DESCRIPTION	QTY	
			9575	8348
1	9546	Casing with plug .....	1	1
2	6212-RS	Bearing 6212 .....	2	2
3	9547	Seal cover (47 x 7) .....	1	1
4	9548	Sprocket 80-3A26 .....	1	1
5	9549	Chain 80-3 x 36" lg .....	1	1
6	6309-RS	Bearing 6309 .....	2	2
7	9550	Input cover with hole .....	1	1
8	9551	Sprocket 80-3A14 .....	1	1
9	9552	Input shaft 1 3/4"-20 splines .....	1	-
9	8349	Input shaft 1 3/8"-6 splines .....	-	1
9	9553	Oil seal (45x65x8) TC double lips .....	1	1
11	Std.	Bolt 5/16" NC x 4 1/2" lg .....	10	10
12	Std.	Nut 5/16" NC .....	10	10
13	9554	Square key 1/2" x 2 1/2" .....	1	1
14	9555	Spacer (2 - 2 3/8 - 0.568) .....	2	2
15	9556	Input cover w/o hole .....	1	1
16	9557	O-ring AS-248 .....	2	2
17	9558	Square key 5/8" x 2 1/2" .....	1	1
18	9559	Output shaft 1 3/4"-20 splines .....	1	-
18	8350	Output shaft 1 3/8"-6 splines .....	-	1
19	9560	Oil seal (60 x80x10) TC double lips .....	2	2
20	9561	Casing w/o plug .....	1	1
21	9562	Slotted spring pin 3/16" x 3/4" .....	2	2
22	Std.	Bolt 3/16" NC x 3/4" lg .....	12	12
23	9563	Air vent 1/2" NPT .....	1	1
24	9564	Sight glass 3/4" NPT .....	1	1
25	9565	Drain plug 1/2" NPT .....	1	1

10

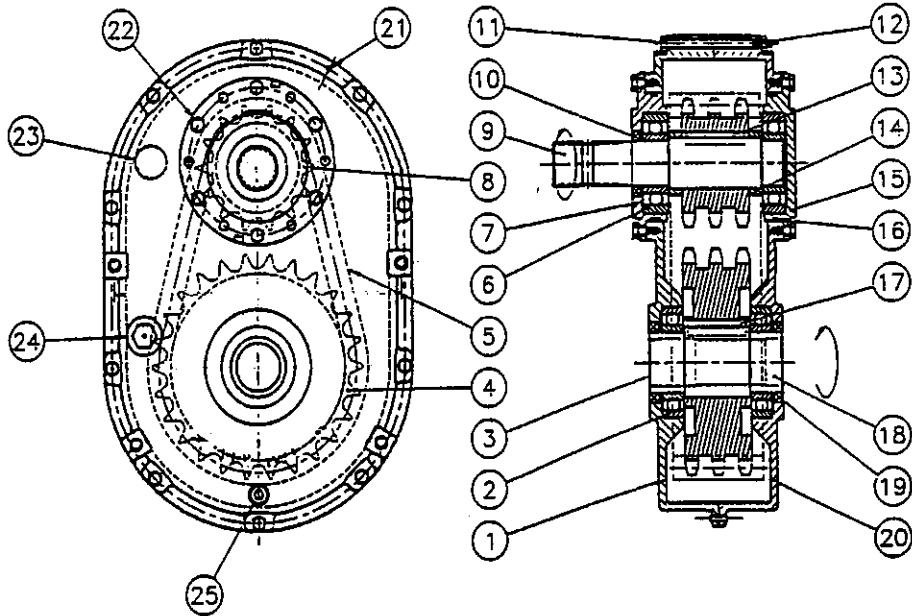
# D-732A



RÉF.	# DE PIÈCE	DESCRIPTION	QTE
1	0.732.0301.00	Carter .....	1
2	8.1.1.00529	Boulon M16X25 8,8 .....	1
3	0.732.6202.00	Engrenage Z35 M5 .....	1
4	0.732.7109.00	Boulon .....	1
5	8 5.1.00510	Bague de retenue 68 UNI7435 .....	1
6	8.7.1.00069	Joint étanche double 60X80X10 .....	1
7	0.732.4203.00	Douille 1 3/4" - 20 cannelures.....	1
8	8.0.1.00067	Roulement à billes 6212 .....	2
9	0.732.6000.00	Engrenage Z32 M5 .....	1
10	8.0.9.00024	Roulement à billes 30208 .....	3
11	8.7.0. 00790	CAP 80x10 .....	3
12	0.732.7100.00	Espaceur .....	1
13	0.732.3000.00	Arbre .....	1
14	8.5.2.00030	Bague de retenue 80 UNI7437 .....	4
15	0.732.5000.00	Engrenage Z26 M5 .....	1
16	0.732.2208.00	Arbre 1 3/4" Z20 .....	1
17	8.0.9.01241	Roulement à billes 32010 X .....	1
18	0.110.7500.00	Rondelle d'ajustement 79,7 .....	2
19	8.7.3.00958	Joint étanche 50X80X10 .....	1
20	8.6.5.00203	Bouchon 1/2"GAS .....	2
21	0.732.5200.00	Engrenage Z23 M5 .....	1
22	8.1.1.00061	Boulon M10X25 8,8 .....	8
23	0.732.1300.00	Couvercle .....	1
24	8.6.0.01202	Bouchon 1/2"GAS .....	1
25	0.404.7131.00	Bouchon 3/8" GAS .....	1
26	8.6.0.01774	.....	1
27	1.732.1301.00	Couvercle .....	1
28	8.1.1.00326	Boulon M8X16 8,8 .....	4
29	8.7.0.01343	Bouchon 22X4 .....	1
251	8.6.0.01773	Coude 903 F 1/2"GAS .....	1
252	8.6.7.00269	Bouchon de remplissage .....	1

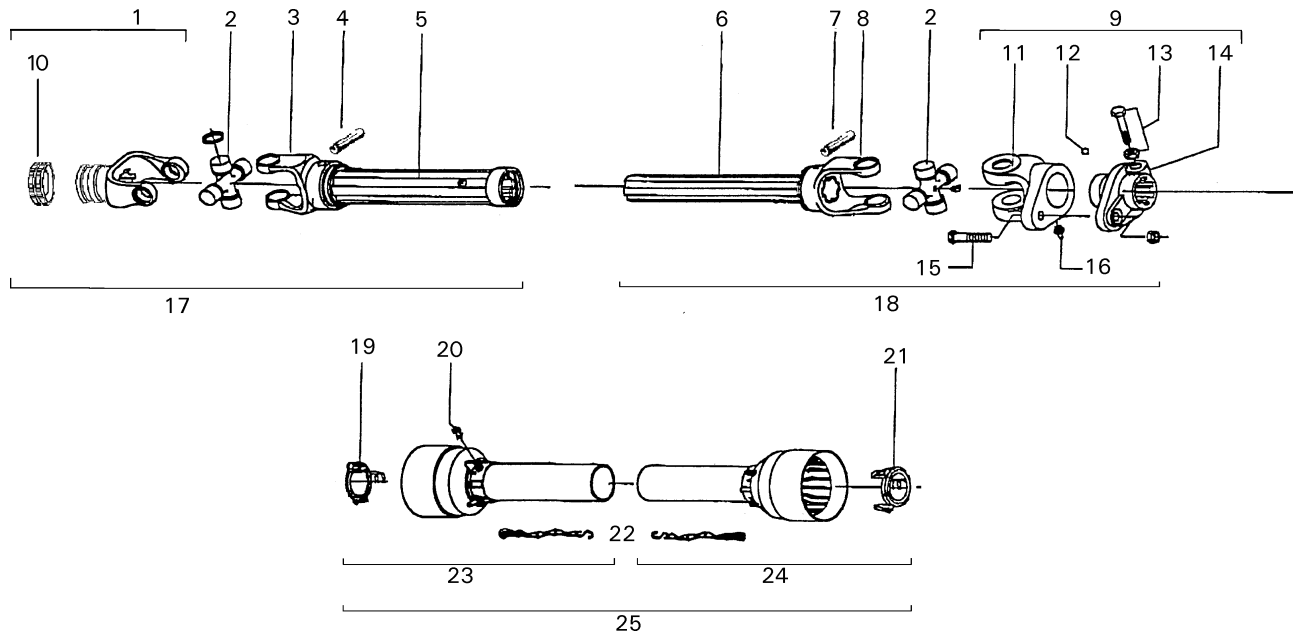


# REDUCTION GEAR BOX # 91054



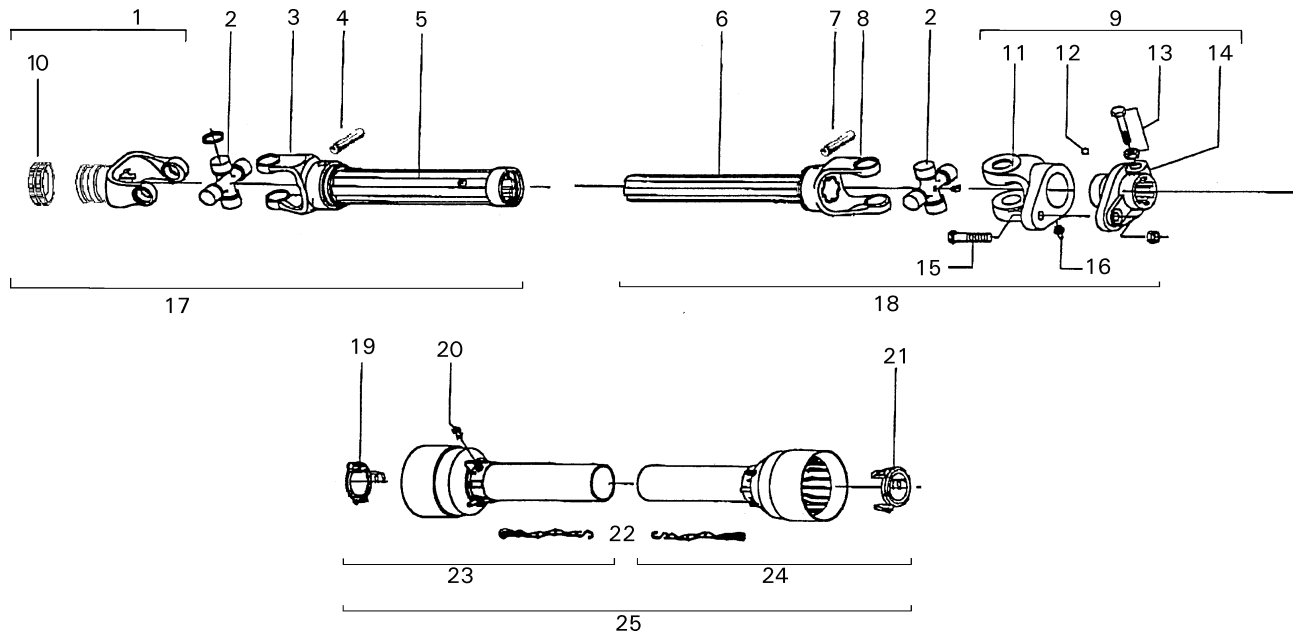
REF.	PART #	DESCRIPTION	QTY
1	9546	Casing with plug .....	1
2	6212-RS	Bearing 6212 .....	2
3	9547	Seal cover (47 x 7) .....	1
4	9548	Sprocket 80-3A26 .....	1
5	9549	Chain 80-3 x 36" lg .....	1
6	6309-RS	Bearing 6309 .....	2
7	9550	Input cover with hole .....	1
8	9551	Sprocket 80-3A14 .....	1
9	9552	Input shaft 1 3/4"-20 splines .....	1
10	9553	Oil seal (45x65x8) TC double lips .....	1
11	Std.	Bolt 5/16" NC x 4 1/2" lg .....	10
12	Std.	Nut 5/16" NC .....	10
13	9554	Square key 1/2" x 2 1/2" .....	1
14	9555	Spacer (2 - 2 3/8 - 0.568) .....	2
15	9556	Input cover w/o hole .....	1
16	9557	O-ring AS-248 .....	2
17	9558	Square key 5/8" x 2 1/2" .....	1
18	9559	Output shaft 1 3/4"-20 splines .....	1
19	9560	Oil seal (60 x80x10) TC double lips .....	2
20	9561	Casing w/o plug .....	1
21	9562	Slotted spring pin 3/16" x 3/4" .....	2
22	Std.	Bolt 3/16" NC x 3/4" lg .....	12
23	9563	Air vent 1/2" NPT .....	1
24	9564	Sight glass 3/4" NPT .....	1
25	9565	Drain plug 1/2" NPT .....	1

# P.T.O. SHAFT # 9598, 9599 & 9604



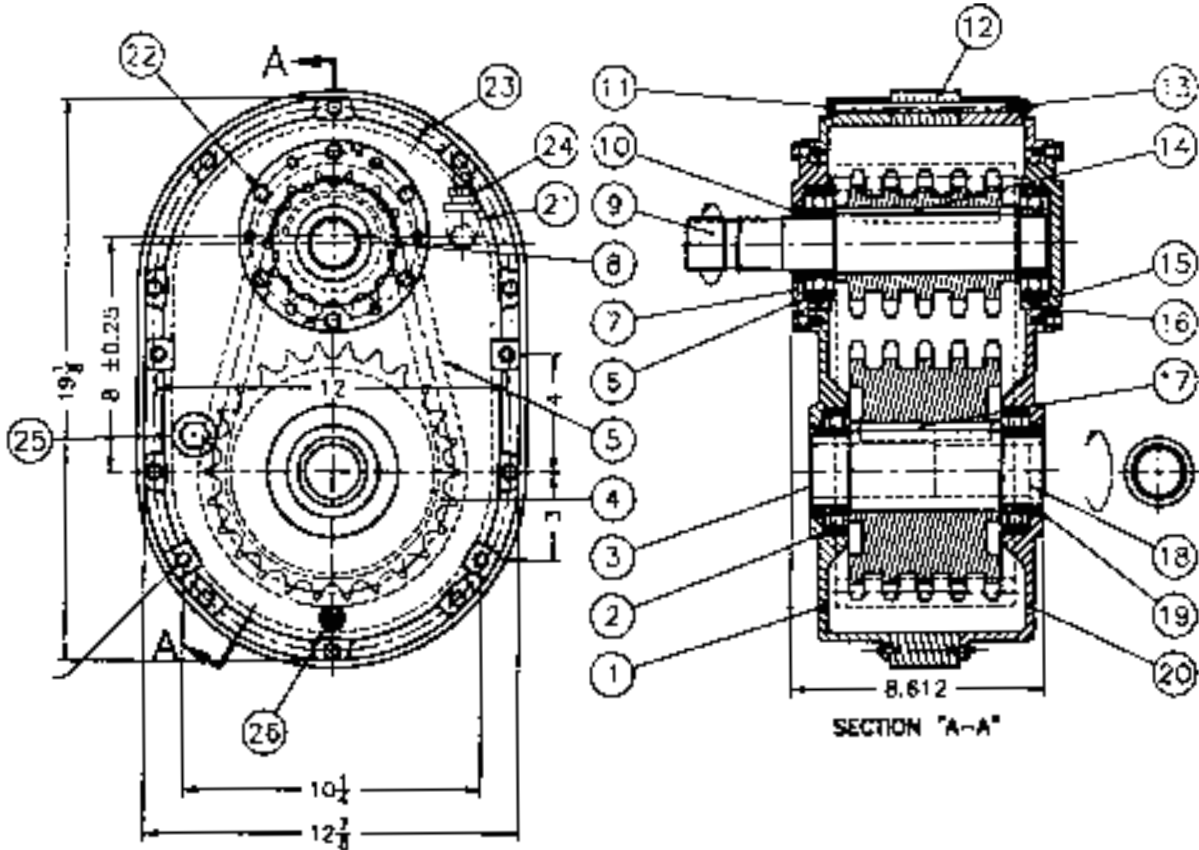
REF.	PART #	DESCRIPTION	9598	9599	9604
1	9481	Yoke with hole 1 3/8" - 6 splines with lock yoke (540 RPM) .....	1	-	-
1	9482	Yoke with hole 1 3/8" - 21 splines with lock yoke (1000 RPM) .....	-	1	-
1	9483	Yoke with hole 1 3/4" - 20 splines with lock yoke (1000 RPM) .....	-	-	1
2	9477	U-joint .....	2	2	2
3	9600	Yoke for outer tube .....	1	1	1
4	9210	Stopper for tube .....	1	1	1
5	9601	Outer tube .....	1	1	1
6	9602	Inner tube .....	1	1	1
7	9210	Stopper for tube .....	1	1	1
8	9603	Yoke for inner tube .....	1	1	1
9	9476	Safety shear yoke .....	1	1	1
10	8363	collar kit .....	1	1	-
10	8364	collar kit .....	-	-	1
11	9487	Yoke and shearplate M12 x 65 .....	1	1	1
12	9205	Ball 5/16" dia. ....	24	24	24
13	9461	Bolt + nut M12x1.25x75 .....	2	2	2
14	9486	Adaptor .....	1	1	1
15	9207	Bolt + nut M12x65 .....	1	1	1
16	8071	Grease fitting .....	1	1	1
17	9607	P.T.O. section, outer part, without protector, 1 3/8" - 6 splines .....	1	-	-
17	9607-1	P.T.O. section, outer part, without protector, 1 3/8" - 21 splines .....	-	1	-
17	9607-2	P.T.O. section, outer part, without protector, 1 3/4" - 20 splines .....	-	-	1
18	9608	P.T.O. section, inner part, without protector .....	1	1	1
19	9460	Bearing ring .....	1	1	1
20	8109	Stopper .....	6	6	6
21	9459	Bearing ring .....	1	1	1
22	8308	Safety chain .....	2	2	2
23	9220	Outer shield .....	1	1	1
24	9221	Inner shield .....	1	1	1
25	9222	Complete shield .....	1	1	1

# P.T.O. SHAFT # 9598, 9599 & 9604



REF.	PART #	DESCRIPTION	9598	9599	9604
1	9481	Yoke with hole 1 3/8" - 6 splines with lock yoke (540 RPM) .....	1	-	-
1	9482	Yoke with hole 1 3/8" - 21 splines with lock yoke (1000 RPM) .....	-	1	-
1	9483	Yoke with hole 1 3/4" - 20 splines with lock yoke (1000 RPM) .....	-	-	1
2	9477	U-joint .....	2	2	2
3	9600	Yoke for outer tube .....	1	1	1
4	9210	Stopper for tube .....	1	1	1
5	9601	Outer tube .....	1	1	1
6	9602	Inner tube .....	1	1	1
7	9210	Stopper for tube .....	1	1	1
8	9603	Yoke for inner tube .....	1	1	1
9	9476	Safety shear yoke .....	1	1	1
10	8363	collar kit .....	1	1	-
10	8364	collar kit .....	-	-	1
11	9487	Yoke and shearplate M12 x 65 .....	1	1	1
12	9205	Ball 5/16" dia. ....	24	24	24
13	9461	Bolt + nut M12x1.25x75 .....	2	2	2
14	9486	Adaptor .....	1	1	1
15	9207	Bolt + nut M12x65 .....	1	1	1
16	8071	Grease fitting .....	1	1	1
17	9607	P.T.O. section, outer part, without protector, 1 3/8" - 6 splines .....	1	-	-
17	9607-1	P.T.O. section, outer part, without protector, 1 3/8" - 21 splines .....	-	1	-
17	9607-2	P.T.O. section, outer part, without protector, 1 3/4" - 20 splines .....	-	-	1
18	9608	P.T.O. section, inner part, without protector .....	1	1	1
19	9460	Bearing ring .....	1	1	1
20	8109	Stopper .....	6	6	6
21	9459	Bearing ring .....	1	1	1
22	8308	Safety chain .....	2	2	2
23	9220	Outer shield .....	1	1	1
24	9221	Inner shield .....	1	1	1
25	9222	Complete shield .....	1	1	1

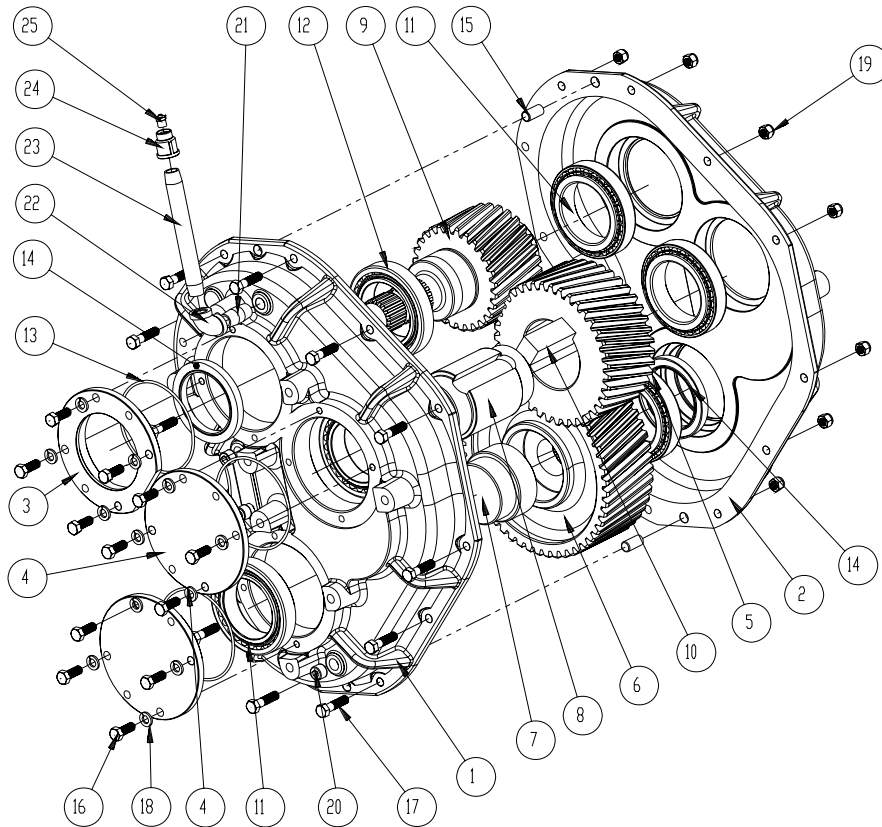
# REDUCTION GEAR BOX # 9609 - 180 HP



REF.	PART #	DESCRIPTION	QTY
1	9546	Casing with plug .....	1
2	6212-RS	Bearing 6212 .....	2
3	9547	Seal cover (47 x 7) .....	1
4	9610	Sprocket 80-5A26 .....	1
5	9611	Chain 80-5 x 36" lg .....	1
6	6309-RS	Bearing 6309 .....	2
7	9550	Input cover with hole .....	1
8	9612	Sprocket 80-5C14 .....	1
9	9613	Input shaft 1 3/4"-20 splines .....	1
10	9553	Oil seal (45 x 65 x 8) .....	1
11	300-34640	Bolt 5/16"-18 UNC x 7" lg .....	3
12	9614	Spacer .....	1
13	336-34000	Nut 5/16"-18 UNC & lock washer .....	10
14	9615	Key 1/2" x 5 .....	1
15	9556	Input cover w/o hole .....	1
16	9557	O-ring AS-248 .....	2
17	9616	Key 5/8" x 4 1/2" .....	1
18	9617	Output shaft 1 3/4"-20 splines .....	1
19	9560	Oil seal (60 x 80 x 10) TC double lips .....	2
20	9561	Casing w/o plug .....	1
21	9618	Elbow 1/2" 90 deg. ....	1
22	300-34220	Bolt 5/16" NC x 3/4" lg & lock washer .....	12
23	9562	Slotted spring pin 3/16" x 3/4" .....	2
24	9563	Air vent 1/2" NPT .....	1
25	9564	Sight glass 3/4" NPT (oil level) .....	1
26	9565	Drain plug 1/2" NPT .....	1
27	Std.	Bolt 5/16"-18 UNC x 6 3/4" lg .....	7

10

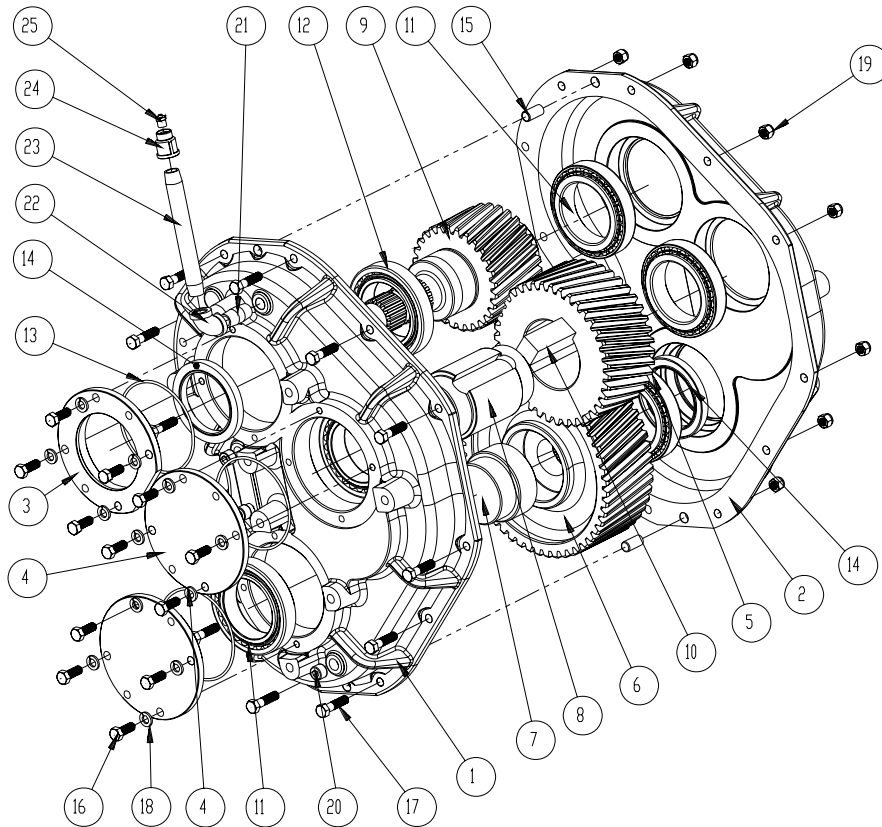
# REDUCTION GEAR BOX # 9690 - from 200 HP



REF.	PART #	DESCRIPTION	QTY
1	9691	Half casing .....	1
2	9692	Half casing .....	1
3	9693	Ring .....	1
4	9694	Cap .....	2
5	9695	39 teeth gear (right hand side) .....	1
6	9696	50 teeth gear (left hand side) .....	1
7	9697	Adaptor .....	1
8	9698	Shaft .....	1
9	9699	20 teeth pinion (left hand side) .....	1
10	9700	Square key 1.000 x 3.000 .....	1
11	9701	Taper roller bearing: cone .....	6
12	9702	Taper roller bearing: cup .....	6
13	9703	Metric O-ring .....	3
14	9704	Oil seal .....	2
15	9705	Pin 1/2" x 1" .....	2
16	300-36250	Bolt 3/8" NC x 1" lg .....	12
17	300-36310	Bolt 3/8" x 1 1/2" lg .....	12
18	371-36000	Lock washer 3/8" .....	12
19	346-36000	Nylon locknut 3/8" .....	12
20	9706	Plug 3/8" NPT .....	3
21	9707	Pipe 3/8" x 1.5 .....	1
22	9708	Elbow 3/8" 90 deg. ....	1
23	9709	Pipe 3/8" x 6 .....	1
24	9710	Breather 1/8" 5 PSI .....	1
25	9711	Reducer 3/8" - 1/8" NPT .....	1

10

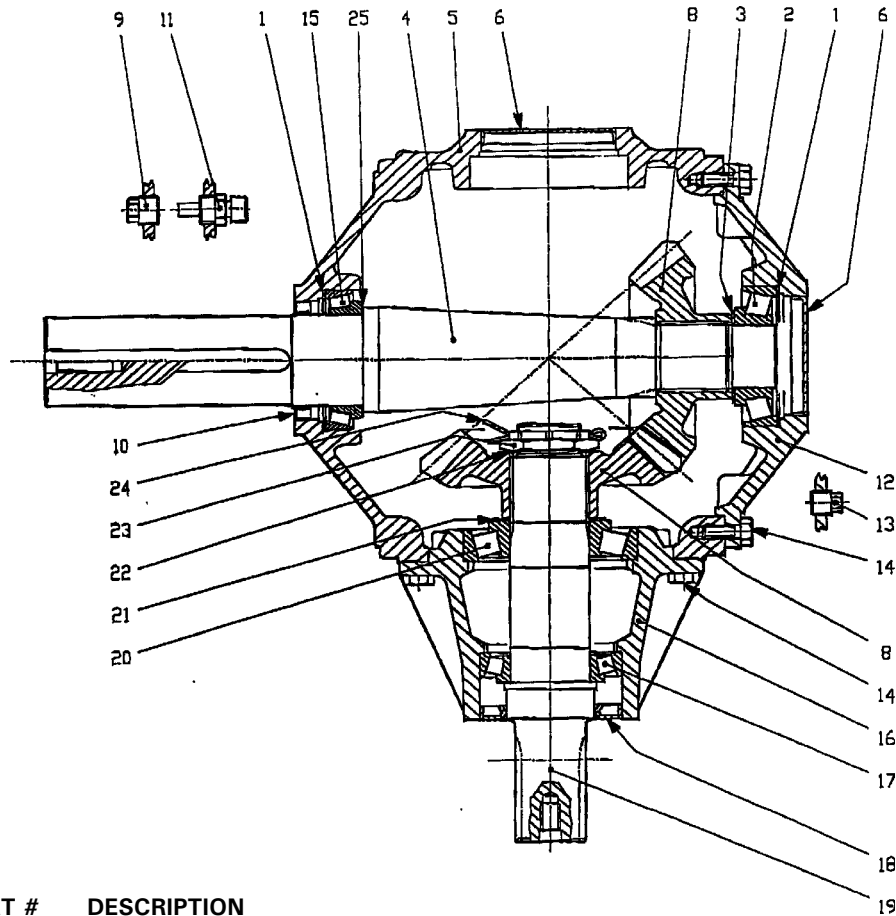
# REDUCTION GEAR BOX # 9690 - from 200 HP



REF.	PART #	DESCRIPTION	QTY
1	9691	Half casing .....	1
2	9692	Half casing .....	1
3	9693	Ring .....	1
4	9694	Cap .....	2
5	9695	39 teeth gear (right hand side) .....	1
6	9696	50 teeth gear (left hand side) .....	1
7	9697	Adaptor .....	1
8	9698	Shaft .....	1
9	9699	20 teeth pinion (left hand side) .....	1
10	9700	Square key 1.000 x 3.000 .....	1
11	9701	Taper roller bearing: cone .....	6
12	9702	Taper roller bearing: cup .....	6
13	9703	Metric O-ring .....	3
14	9704	Oil seal .....	2
15	9705	Pin 1/2" x 1" .....	2
16	300-36250	Bolt 3/8" NC x 1" lg .....	12
17	300-36310	Bolt 3/8" x 1 1/2" lg .....	12
18	371-36000	Lock washer 3/8" .....	12
19	346-36000	Nylon locknut 3/8" .....	12
20	9706	Plug 3/8" NPT .....	3
21	9707	Pipe 3/8" x 1.5 .....	1
22	9708	Elbow 3/8" 90 deg. ....	1
23	9709	Pipe 3/8" x 6 .....	1
24	9710	Breather 1/8" 5 PSI .....	1
25	9711	Reducer 3/8" - 1/8" NPT .....	1

10

# GEAR BOX # 9645 (T301A inverted)

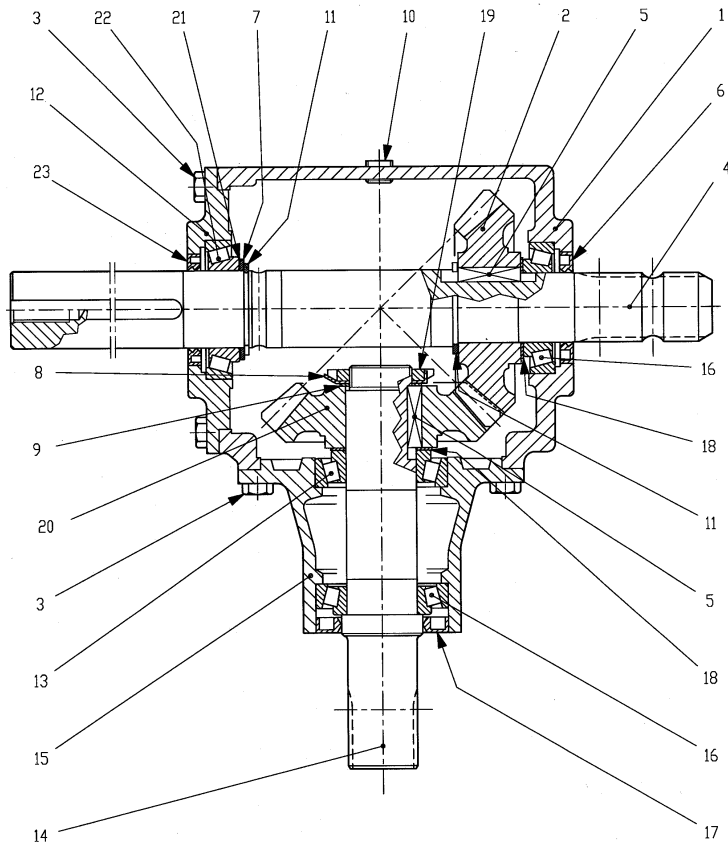


REF.	PART #	DESCRIPTION	QTY
1	9577	Shim .....	2
2	30309-A	Bearing .....	1
3	9594	Shim .....	1
4	9682	Shaft .....	1
5	9579	Casing .....	1
6	9580	Cap .....	2
8	9583	Gear .....	2
9	9584	Plug .....	1
10	9586	Oil seal .....	1
11	9593	Plug .....	1
12	9592	Cover .....	1
13	8064	Plug .....	1
14	9576	Bolt .....	18
15	32013X	Bearing .....	1
16	9591	Extension .....	1
17	30210-A	Bearing .....	1
18	9590	Oil seal .....	1
19	9589	Shaft .....	1
20	30310-A	Bearing .....	1
21	9588	Shim .....	1
22	9587	Shim .....	1
23	9581	Nut .....	1
24	9582	Cotter pin .....	1
25	9578	Shim .....	1

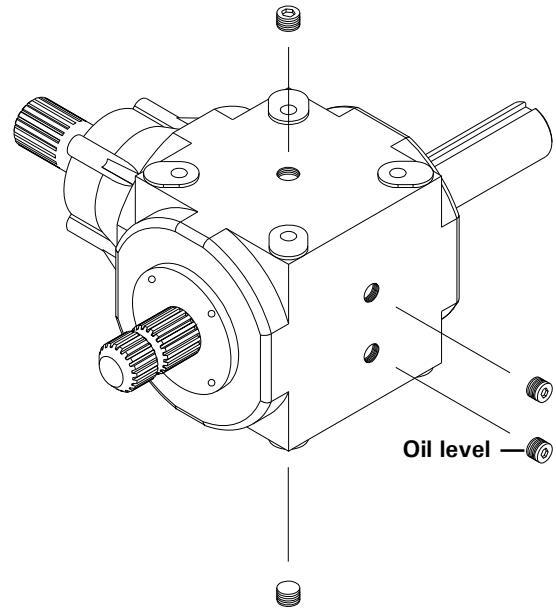
8

# GEAR BOX # 9713 (T279 inverted)

170-05241.tif



**Oil volume required: 2.5 liters**  
 Use semi-synthetic **Enduratex EP 68-220** gear oil (Péto-Canada) or equivalent.

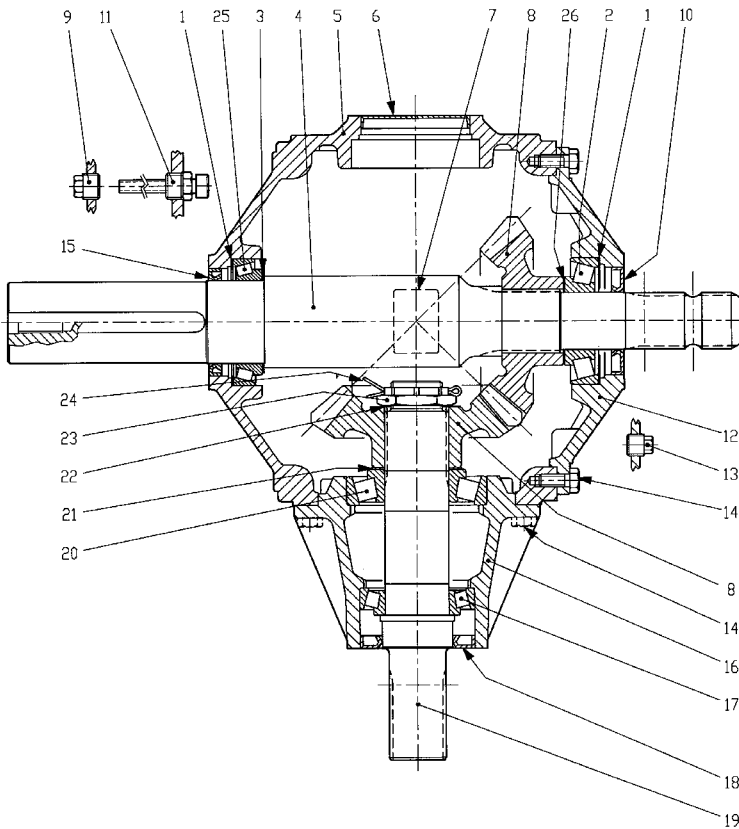


REF.	PART #	DESCRIPTION	QTY
1	6330	Casing .....	1
2	6334	Gear Z21 .....	2
3	6319	Bolt M10 x 22 .....	16
4	9770	Shaft .....	1
5	6326	Key B14 x 9 x 40 .....	2
6	6332	Double lip seal .....	1
7	9741	Shim .....	1
8	6328	Spring washer .....	1
9	6321	Shim .....	1
10	6331	Plug 3/8" gas .....	4
11	9742	Snap ring 50UNI7436 .....	2
12	6338	Cover .....	1
13	32209-A	Bearing: cone & cup .....	1
14	6325	Shaft .....	1
15	6318	Extension .....	1
16	30209-A	Bearing: cone & cup .....	2
17	6314	Oil seal 52x85x10 .....	1
18	6321	Shim .....	2
19	6329	Lock nut M40 x 1.5 H9 .....	1
20	6322	Gear Z21 .....	1
21	6335	Shim .....	1
22	30210-A	Bearing: cone & cup .....	1
23	6339	Oil seal 50 x 72 x 8 .....	1

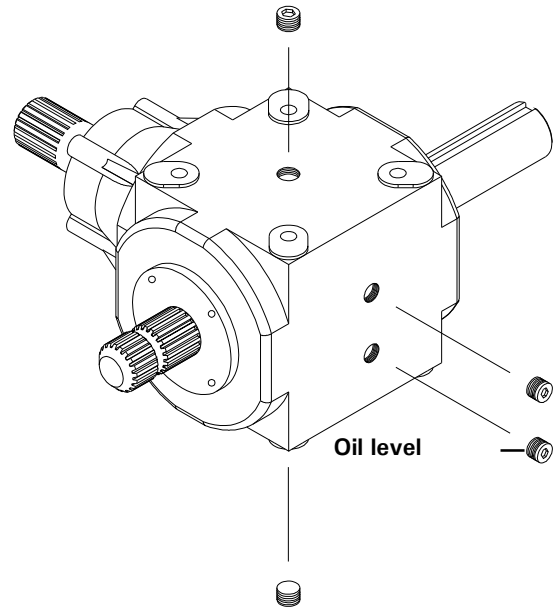


# GEAR BOX # 9714 (T301 inverted)

170-05311.tif



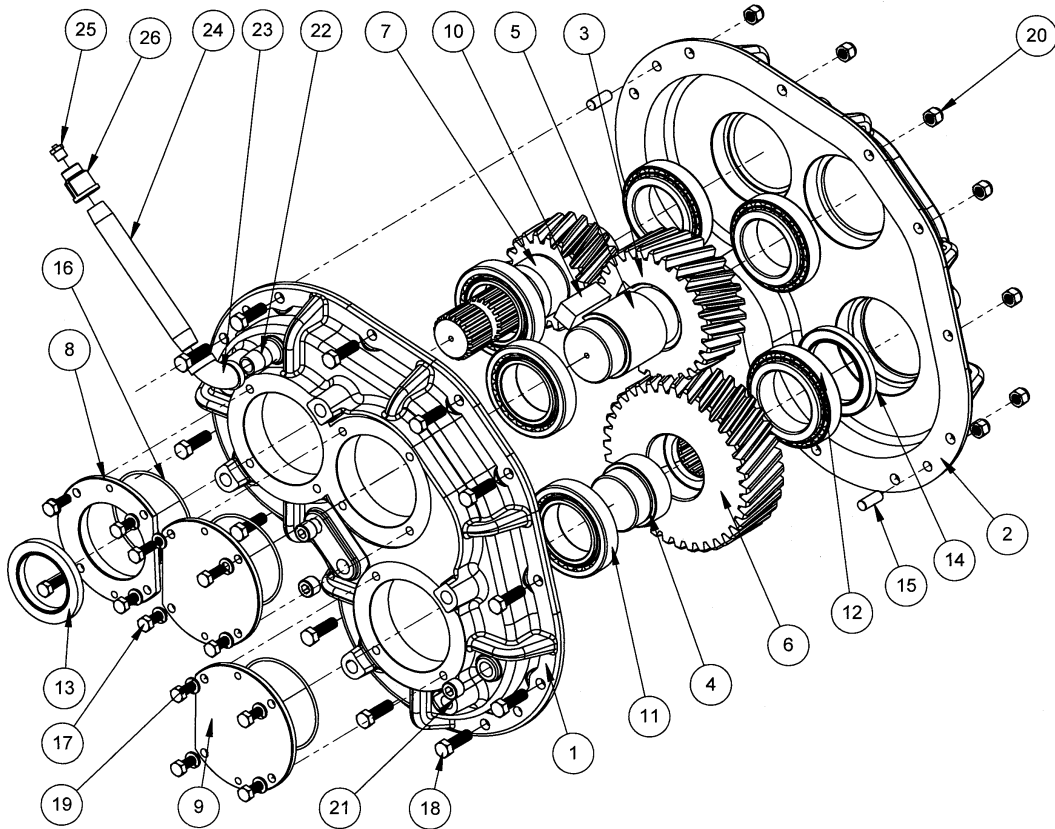
**Oil volume required: 2.5 liters**  
Use semi-synthetic **MOBIL SHC 320** or equivalent.



REF.	PART #	DESCRIPTION	QTY
1	9577	Shim .....	2
2	30309-A	Beraring 30309 .....	1
3	9578	Shim 79,7 .....	1
4	9729	Shaft .....	1
5	9579	Casing .....	1
6	9580	Cap .....	1
7	9730	Plate .....	1
8	9583	Gear Z20 M7.8 .....	2
9	9584	Plug 1/2" gas .....	1
10	9596	Oil seal 45 x 85 x 10 .....	1
11	9593	Plug 1/2G .....	1
12	9592	Cover .....	1
13	8064	Plug 3/8" gas .....	1
14	9576	Bolt M10x25 .....	18
15	9586	Oil seal 65 x 85 x 10 .....	1
16	9591	Extension .....	1
17	30210-A	Bearing 30210 .....	1
18	9590	Oil seal 55 x 90 x 10 .....	1
19	9589	Shaft Z20 1 3/4" .....	1
20	30310-A	Bearing 30310 .....	1
21	9588	Shim 70.3 .....	1
22	9587	Shim 40.3 x 1.0 .....	1
23	9581	Nut M40 x 1.5 .....	1
24	9582	Cotter pin B4 x 60 .....	1
25	32013X	Bearing 32013X .....	1
26	9578	Shim 45.3 x 65.3 .....	1

10

# SPEED REDUCER # 9721 - 200 HP

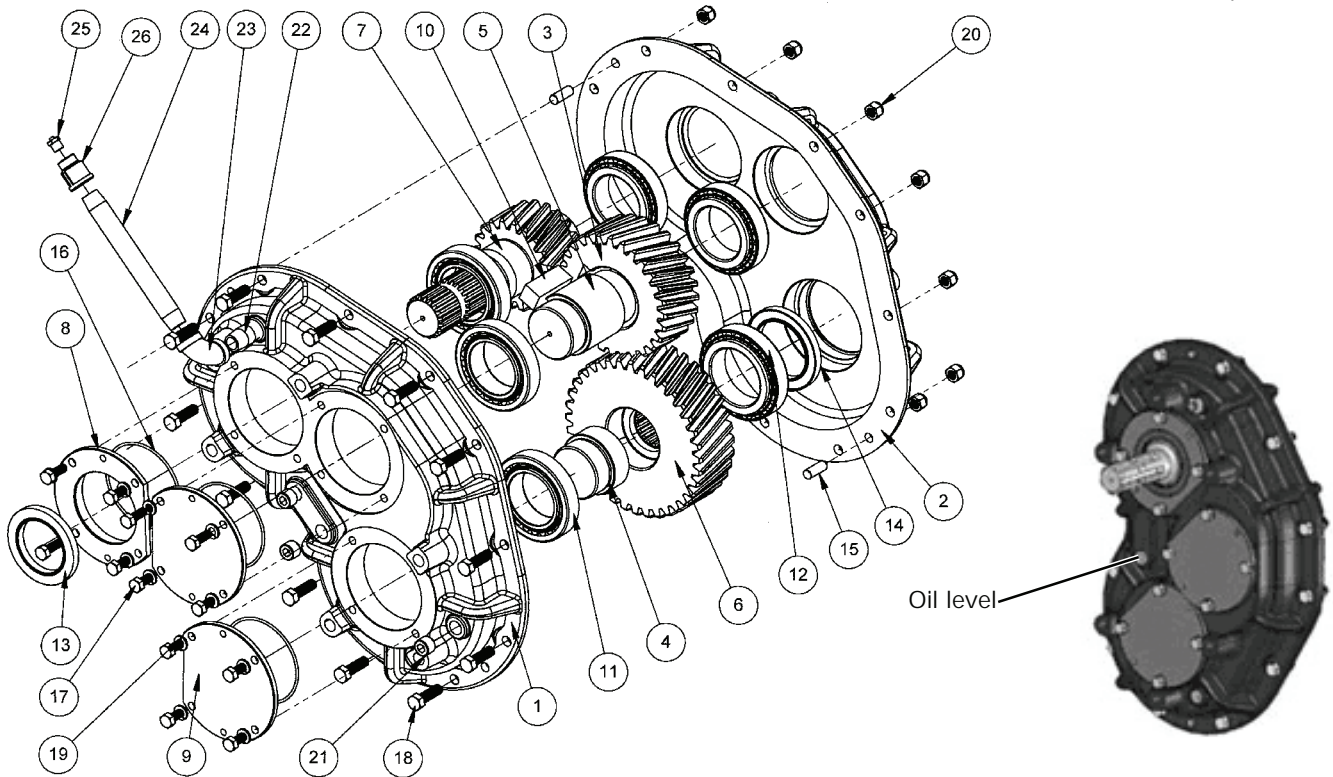


REF.	PART #	DESCRIPTION	QTY
1	9752	Half casing .....	1
2	8753	Half casing .....	1
3	9754	Helical gear with the teeth inclined to the right (28 teeth) .....	1
4	9756	Adaptor .....	1
5	9755	Intermediate shaft .....	1
6	9757	Helical gear with the teeth inclined to the left (36 teeth) .....	1
7	9758	Shaft with helical gear with the teeth inclined to the left (20 teeth) .....	1
8	9759	Open cover .....	1
9	9760	Closed over .....	2
10	9761	Square key 0.750 x 2.000 .....	1
11	9762	Metric taper roller bearing with cup .....	5
12	9763	Metric taper roller bearing with cup .....	1
13	9764	Oil seal .....	1
14	9765	Oil seal .....	1
15	9766	Goupille 3/8" x 1" .....	2
16	9767	Metric oil seal .....	3
17	300-34235	Bolt 5/16" NC x 7/8" lg .....	12
18	300-36280	Bolt 3/8" x 1 1/4" lg .....	12
19	371-34000	lock washer 5/16" .....	12
20	346-36000	Nylon locknut 3/8" .....	12
21	9706	Plug 3/8" NPT .....	3
22	9707	Pipe 3/8" x 1.5 .....	1
23	9708	Albow 3/8" 90 deg. ....	1
24	9709	Pipe 3/8" x 6 .....	1
25	9710	Vent plug 1/8" 5 PSI .....	1
26	9711	Adaptor 3/8" - 1/8" NPT .....	1

10

# SPEED REDUCER # 9721 - 200 HP PR3G-200-2

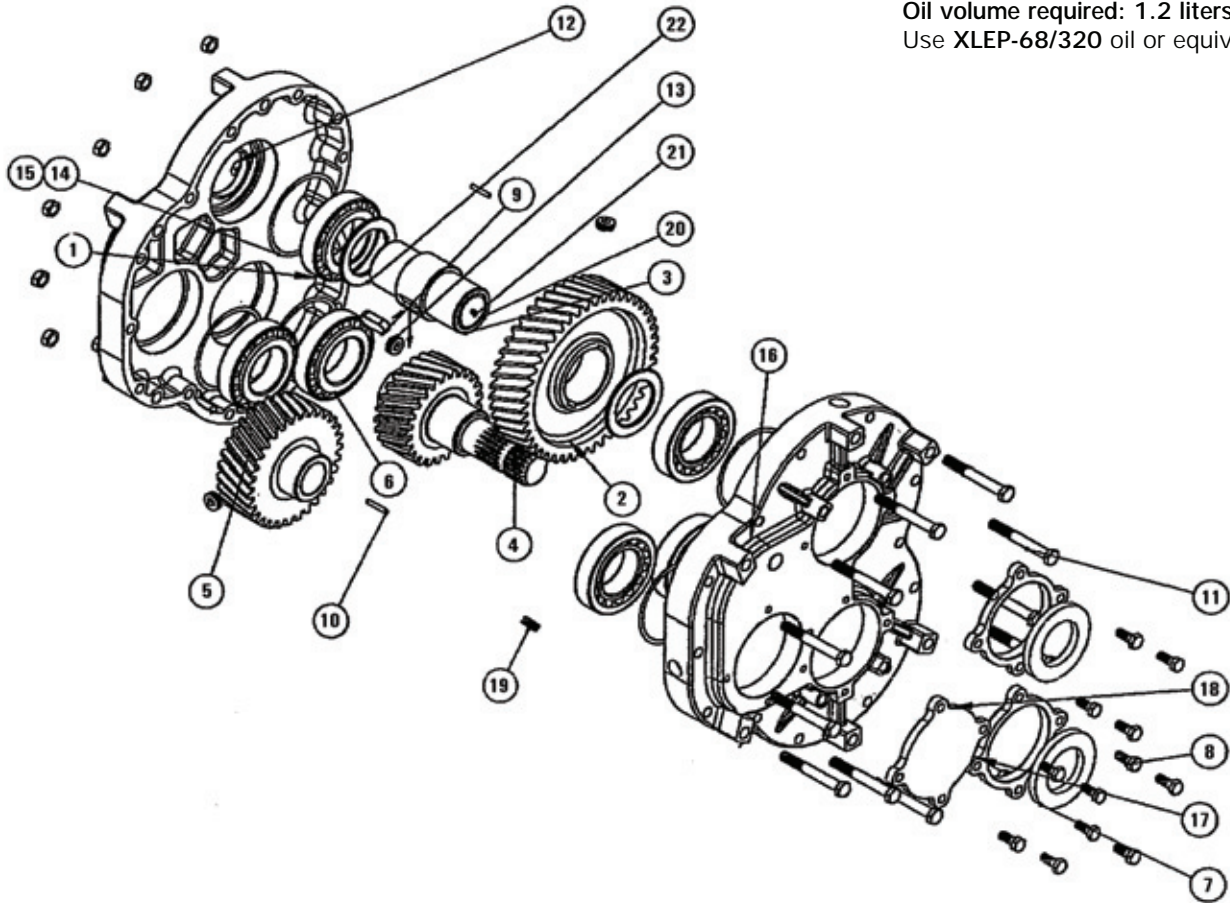
Oil volume required: 0.9 liters  
Use XLEP-68/320 oil or equivalent.



REF.	PART #	DESCRIPTION	QTY
1	9752	Half casing .....	1
2	8753	Half casing .....	1
3	9754	Helical gear with the teeth inclined to the right (28 teeth) .....	1
4	9756	Adaptor .....	1
5	9755	Intermediate shaft .....	1
6	9757	Helical gear with the teeth inclined to the left (36 teeth) .....	1
7	9758	Shaft with helical gear with the teeth inclined to the left (20 teeth) .....	1
8	9759	Open cover .....	1
9	9760	Closed over .....	2
10	9761	Square key 0.750 x 2.000 .....	1
11	9762	Metric taper roller bearing with cup .....	5
12	9763	Metric taper roller bearing with cup .....	1
13	9764	Oil seal .....	1
14	9765	Oil seal .....	1
15	9766	Goupille 3/8" x 1" .....	2
16	9767	Metric oil seal .....	3
17	300-34235	Bolt 5/16" NC x 7/8" lg .....	12
18	300-36280	Bolt 3/8" x 1 1/4" lg .....	12
19	371-34000	lock washer 5/16" .....	12
20	346-36000	Nylon locknut 3/8" .....	12
21	9706	Plug 3/8" NPT .....	3
22	9707	Pipe 3/8" x 1.5 .....	1
23	9708	Elbow 3/8" 90 deg. ....	1
24	9709	Pipe 3/8" x 6 .....	1
25	9710	Vent plug 1/8" 5 PSI .....	1
26	9711	Adaptor 3/8" - 1/8" NPT .....	1

# REDUCTION GEAR BOX # 9769 PRH-30M-2

Oil volume required: 1.2 liters  
Use XLEP-68/320 oil or equivalent.



REF.	#PART	DESCRIPTION	QTY
1	9770	Half casing .....	1
2	9771	Gear .....	2
3	9772	Splined adaptor 1 3/4" - 20 .....	1
4	9773	Input shaft with gear .....	1
5	9774	Gear .....	1
6	NTN4T-32212U	Tapered roller-bearing .....	6
7	9775	Oil seal 60 mm x 100 x 10 .....	3
8	Std.	Bolt M10 x 25 .....	12
9	9776	Key M6 x 10 x 40 .....	2
10	9777	Pin .....	2
11	Std.	Bolt M12 x 95 .....	11
12	Std.	Nut M12 .....	11
13	9778	Plug .....	1
14	9779	Shim .....	12
15	9780	Shim .....	12
16	9781	Half casing .....	1
17	9782	Hollow cap .....	2
18	9783	Solid cap .....	1
19	9784	Plug .....	6
20	9785	Cover .....	1
21	Std.	Grease fitting .....	1
22	9786	Spacer .....	1