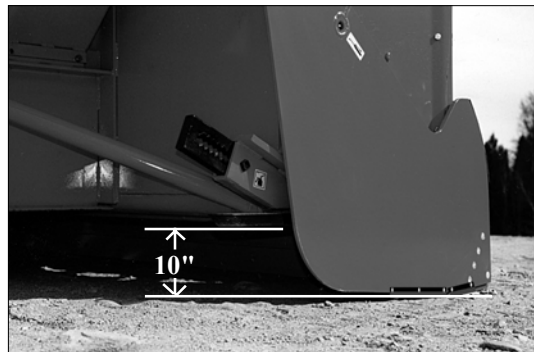




OPERATOR'S / PARTS MANUAL



Snowblowers Models

PXP-860
PXP-920

PXP-860-92
PXP-920-98

VISIT OUR WEBSITE



www.pronovost.qc.ca

Copyright © Les Machineries Pronovost Inc., 2003

All rights reserved.

Printed in Canada.

TABLE OF CONTENTS

Section	Item	Page
1	Introduction	5
2	Safety	6
	General Safety	6
	Safety in Operation	6
	Safety with Maintenance	7
	Safety in Transport	7
	Safety in Storage	7
3	Decals	8
	Safety Decals	8
	Maintenance Decals	10
4	Assembly	12
	General assembly	12
5	Start-up	13
	Basic Start-up Procedures	13
6	Maintenance	15
7	Storage	16
8	Trouble Shooting	17
9	Specifications	19
10	Parts List	20
	Snowblowers PXP-860, PXP-860-92, PXP-920, PXP-920-98	20
	Chute CST-7486	25
	Semi-industrial Chute PSI-7486	27
	Semi-industrial Chute PSIG-7486	29
	Scraper blade and skid shoes	31
	P.T.O. Shaft 8202, 8202-1	33
	P.T.O. Shaft 9225-EG, 9569	34
	P.T.O. Shaft 9475, 9475-1, 9475-2	35
	Gear Box 8251	36
	Gear Box 9307	37
	Speed reducer 8348	38
	Speed reducer 9575	39
	Cylinder 25TR08	40
	Cylinder 30TR06, 30TR08	41
	Hydraulic Motor MLH-250 & MLH-315	42
11	Torque Chart	43
12	Warranty	44

INTRODUCTION

CONGRATULATIONS!

Thank you for choosing PRONOVOST. We are confident this equipment will meet your requirements in terms of quality, performance and reliability.

This manual was prepared to assist you in the safe operation of your new Snowblower. It contains important information which will help you achieve excellent returns with your Snowblower for years to come.

Please read this manual completely before operating your Snowblower and keep it for future reference.

Before starting the machine, you or any other person who will be operating the Snowblower must familiarize yourself with the safety recommendations and the operating instructions. Please read carefully and be sure to understand and follow all recommendations and procedures.

In this manual, the right and left sides are identified as shown on Figure 1.

If you require additional information on your Snowblower, please contact your PRONOVOST Dealer.

NOW take a moment to enter the model, serial number and the date of purchase of your Snowblower in the space provided.

When ordering parts from your Dealer, please refer to these numbers for a fast and efficient service. Use PRONOVOST parts for replacement.

The model and serial numbers are on the name plate shown on Fig. 1.

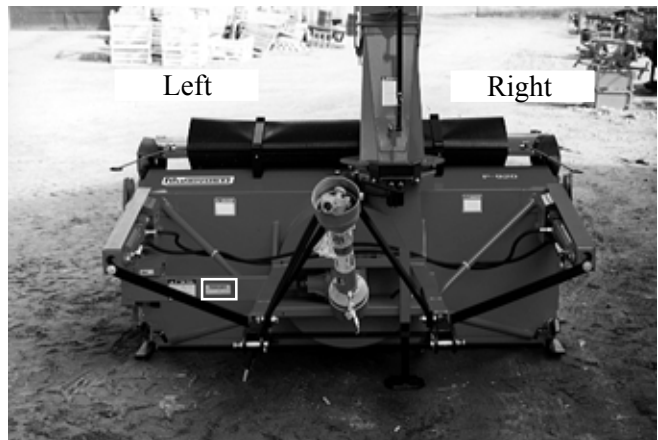


Figure 1

MODEL: _____ 

SERIAL NO: _____ 

DATE OF PURCHASE: _____ 

SAFETY

GENERAL SAFETY

2

WHEN YOU SEE THIS SYMBOL



ATTENTION!

**BE ALERT
YOUR SAFETY IS INVOLVED**

This symbol «**SAFETY ALERT**» is used in this manual and on the safety decals on the Snowblower. It warns you of the possibility of danger. Carefully read, understand and follow all safety recommendations before operating the Snowblower.

- 1) Careful operation is the best assurance against accidents. Carefully read this manual and follow all recommendations before operating your Snowblower. It is the owner's responsibility to make sure that anyone who will operate the Snowblower will read this manual before operating the equipment.
- 2) Familiarize yourself with all controls and always be ready to stop the Snowblower quickly in case of emergency.
- 3) Never let a child operate the Snowblower.
- 4) Do not modify the Snowblower. Any non authorized modification may affect the efficiency and/or safety of the equipment and will automatically void the warranty.
- 5) Never operate the Snowblower with defective parts or if damaged in any way. Have it repaired before operating.
- 6) Make sure all fasteners are in place and properly secured or tightened. Refer to torque chart on page 43.
- 7) Avoid wearing loose fitting clothing when working with the Snowblower. These could get entangled in moving parts of the equipment and cause accidents.

- 8) Prolonged exposure to noise may hamper hearing. Protect yourself by wearing adequate protection devices.
- 9) Hydraulic fluids under pressure can damage your skin. Do not use your hands to locate a leak.
- 10) Before the beginning of the snow season, inspect all areas where the Snowblower will be used and remove any object which may cause an accident and/or damage the equipment.
- 11) Never operate your Snowblower in poor visibility or without proper lighting conditions.

SAFETY IN OPERATION

- 1) Be sure there are no obstructions around the equipment and that no one stands near the equipment when in operation.
- 2) Do not operate an engine in a confined or non ventilated area.
- 3) Do not perform any adjustments, cleaning, maintenance or repairs with the engine running. The engine must be stopped and the P.T.O. disengaged. Preferably remove the key from the ignition.
- 4) Wear adequate clothing when working in cold or windy conditions.
- 5) Adjust skid shoes for proper ground clearance of scraper blade, especially in rough terrain or soft ground conditions.
- 6) Before operating, make sure the P.T.O. is properly installed and secured.
- 7) Before starting-up the Snowblower, make sure the auger and drum areas are free of ice.
- 8) Put P.T.O. control in neutral position before starting engine.
- 9) Keep hands, feet and clothing away from moving parts of the Snowblower. Stay away from the discharge chute.

SAFETY (cont'd)

- 10) Before unplugging the chute, always disengage the P.T.O., stop the engine and relieve all hydraulic pressures.
- 11) Do not operate in excessive inclined conditions. Be careful when turning in slopes.
- 12) Never operate your Snowblower with missing guards or without protective devices in place.
- 13) Do not operate your Snowblower near buildings, windows or other vehicles without prior and proper adjustment of the chute deflector.
- 14) Never aim discharge chute towards people or animals. This may cause serious injuries.
- 15) Always reduce operating speed in slippery conditions.
- 16) Be careful when backing-up, make sure you have good visibility.
- 17) Always be on the lookout for objects which may enter the Snowblower.
- 18) If undue vibrations are felt, disengage the P.T.O., stop the motor and look for the cause of the vibration. Vibration is usually the indication of a problem.
- 19) When you activate the X-PRO BLADE make sure nobody is behind the snowblower, because this person could be hit in the face by the proximity indicator (Fig. 12 page 10).
- 20) At the end of the operation, disengage the P.T.O., lower the Snowblower, put transmission in neutral, apply parking brake, stop engine and remove the key from the ignition.

SAFETY WITH MAINTENANCE

- 1) Perform the Snowblower maintenance according to recommendations contained in this manual.

- 2) Stop engine and relieve all hydraulic pressures before doing inspection, maintenance or repairs.
- 3) Never perform any work under the Snowblower while it is supported only by the tractor's hydraulic system. It must be completely supported by wooden blocks or other safe means.

SAFETY IN TRANSPORT

- 1) On public roads, use proper safety lights and check local regulations.
- 2) Be alert while driving on the road. Never carry passengers.
- 3) Always disengage P.T.O. while moving from one area of work to another.
- 4) It is recommended to use both brake pedals simultaneously for better control.
- 5) The recommended road speed should be such as to maintain full control over steering and braking.
- 6) Be careful while backing up, make sure you have good visibility.

SAFETY IN STORAGE

- 1) Provide adequate supports to prevent any accidental overturning of the Snowblower.
- 2) Do not let children play in the area where the snowblower is stored.
- 3) Lower X-PRO blade on the ground.

2

DECALS

SAFETY DECALS

The safety decals are affixed wherever special safety precautions are indicated. Locate them on the machine and read them carefully. If a decal is damaged, lost or illegible, install a new one. The following photos indicate where each one must be installed.

3

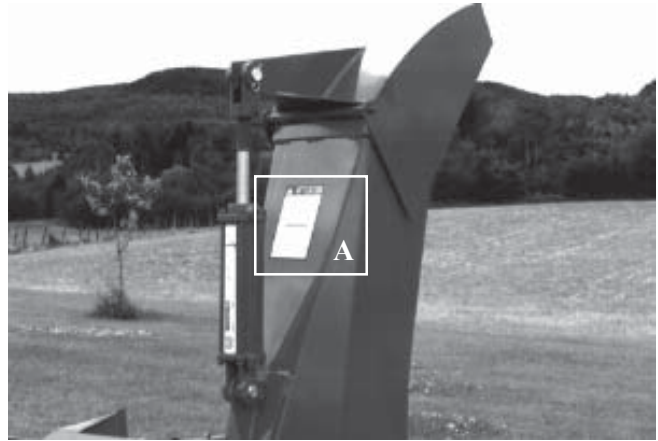


Figure 3

ATTENTION

- 1- FOR SAFE OPERATION, FOLLOW OPERATING INSTRUCTIONS IN OPERATOR'S MANUAL.
- 2- KEEP HANDS, FEET AND CLOTHINGS AWAY FROM POWER DRIVEN PARTS.
- 3- STOP ENGINE BEFORE LEAVING THE EQUIPMENT.
- 4- MACHINE HAS TO BE COMPLETELY STOPPED BEFORE STARTING TO ADJUST OR LUBRICATE.
- 5- KEEP PEOPLE AND PETS AT SAFE DISTANCE FROM MACHINE.
- 6- KEEP ALL GUARDS AND SHIELDS IN PLACE.

- 1- POUR UN FONCTIONNEMENT SÉCURITAIRE SUIVRE LES INSTRUCTIONS DANS LE MANUEL D'OPÉRATION.
- 2- GARDER LES MAINS, PIEDS ET VÊTEMENTS ÉLOIGNÉS DES ÉLÉMENTS MOBILES OU ROTATIFS.
- 3- AVANT DE QUITTER LA MACHINE ARRÊTER LE MOTEUR.
- 4- ARRÊTER COMPLÈTEMENT LA MACHINE POUR EFFECTUER L'ENTRETIEN ET L'AJUSTEMENT.
- 5- GARDER LES GENS ET LES ANIMAUX À UNE DISTANCE SÉCURITAIRE.
- 6- GARDER TOUS LES ÉCRANS PROTECTEUR EN PLACE.

PA 93-01

Figure 2
Decal A

Part no.: A102

DANGER

TO AVOID SERIOUS INJURIES, KEEP CLEAR OF EQUIPMENT WHILE IN OPERATION.

POUR ÉVITER DES BLESSURES GRAVES SE TENIR LOIN DE CET ÉQUIPEMENT LORSQU'IL EST EN MARCHÉ.

PD 93-03

Figure 4
Decal B

Part no.: A101



Figure 5

DECALS (cont'd)

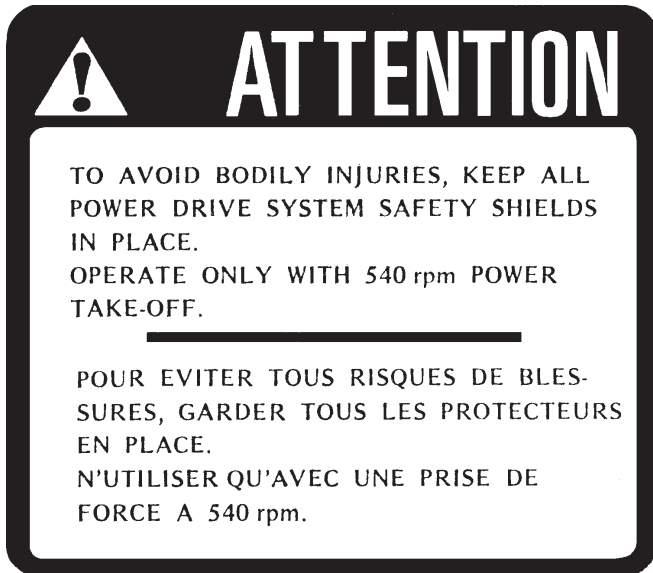


Figure 6
Decal C

Part no.: A107



Figure 7
Decal D

Part no.: A103



Figure 8

Decal E in Fig. 9 is located directly on the P.T.O. shaft. It is not visible when the safety shield is in place. It must never be visible when you operate the equipment.



Figure 9
Decal E

Part no.: A108

3

DECALS (cont'd)

3

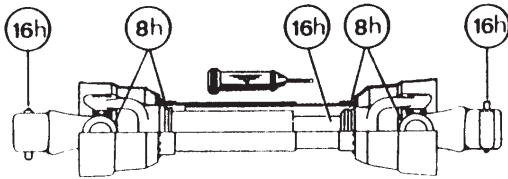


Figure 10
Decal F

Part no.: A 109

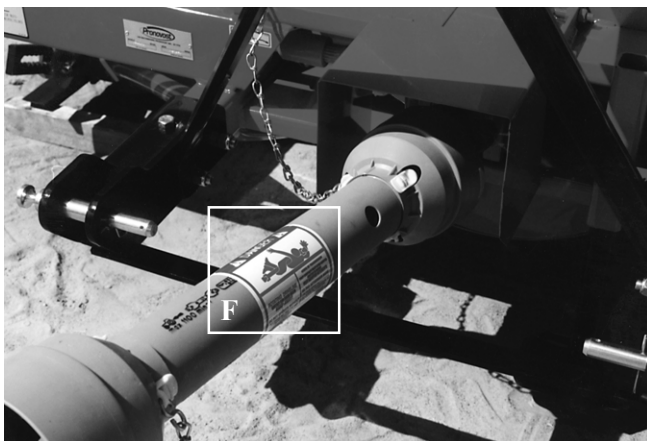


Figure 11



Figure 12

Pièce no.: 190-02651



Figure 13

MAINTENANCE DECALS

The maintenance decals indicate the points requiring lubrication. Refer to maintenance section for more details.



Figure 14

Pièce no.: A 105

DECALS (cont'd)



Figure 15

Pièce no.: A 106



Figure 16
Autocollant G

Pièce no.: A104

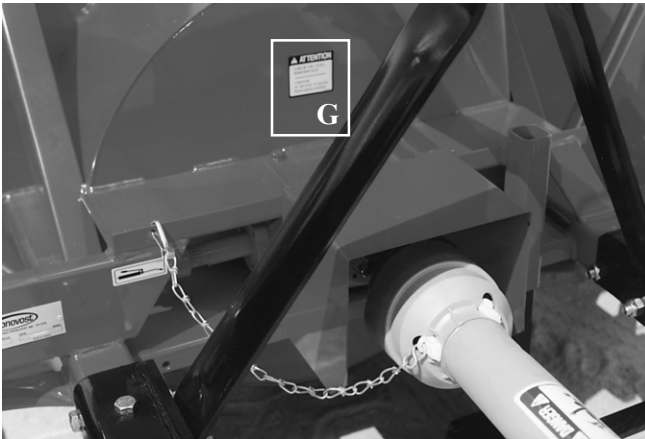


Figure 17

ASSEMBLY

4



Figure 18



Figure 19

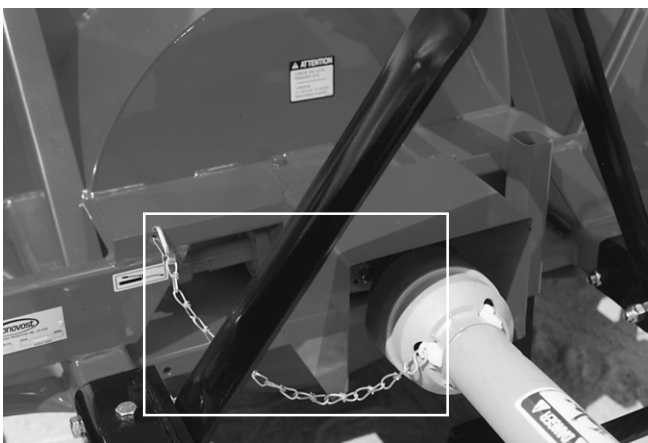


Figure 20

ASSEMBLY

- 1) The Snowblower is shipped partly assembled.
- 2) Install 3-point system according to the model of your Snowblower. (See section 10 for parts numbers). Use the holes most convenient to the type of tractor used (Fig. 18).
- 3) Install P.T.O. shaft with the shear pin end onto the Snowblower gear box (Fig. 19). Then attach safety shield support chain as shown (Fig. 20). **WARNING:** The telescoping tubes of the drive shaft must never be allowed to bottom out while maintaining a minimum overlap of 6 inches.
- 4) If you install a hydraulic cylinder on the chute deflector, use model 25TR08 cylinder.
- 5) When installing chute, grease the groove of the UHMW slide in order to prevent the corrosion of the rim of the chute.
- 6) Install the chute rotation mechanism.

STARTING-UP



Figure 21

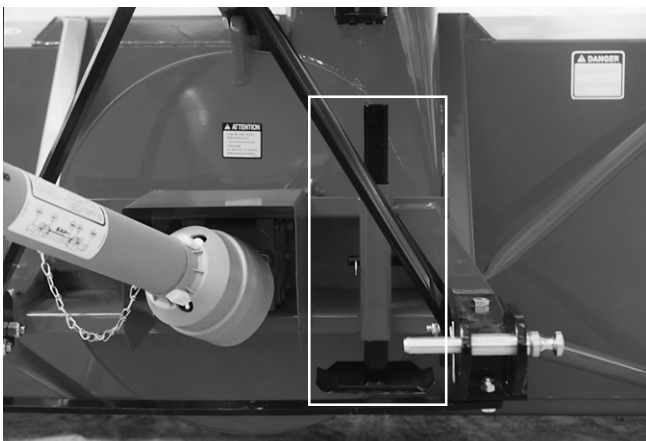


Figure 22



Figure 23

START-UP PROCEDURES

- 1) Check oil level in gearbox. Use S.A.E. W90 gear box oil.
- 2) Lubricate all points with a good quality multipurpose grease.
- 3) Check chain take-up adjustment. The spring maintaining the tension must be compressed to a length between 2 3/4" and 3 1/2".
- 4) Verify for adequate tightness of all fastening devices. Refer to torque chart on page 43.
- 5) Adjust skid shoes according to ground conditions (Fig. 21).
- 6) Following the installation of the Snowblower on the tractor, **do not forget** to lift the storage support (Fig. 22).
- 7) Make sure of a 540 RPM input to your snowblower.
- 8) Check impeller adjustment. The tip of the blades should be approximately 1/8" to 3/16" from the discharge wall of the drum. If necessary, adjust with the take-up screws provided (Fig. 23).
- 9) In order to avoid damaging your snowblower, adjust the speed of descent of your 3 point hitch to prevent striking the ground too hard.
- 10) Adjust the hydraulic flow in order to have a good control of the rotation speed of the chute.

5

STARTING-UP

The PXP snowblower has been developed to fit three point hitch mount farm tractors. The lifting angle of the three point hitch varies from one model tractor to the other. Therefore in order to prevent premature wear of the skid shoes and to avoid the sides of the x-pro blade from scratching paved surfaces, **it is essential that the X-PRO blade be adjusted in the proper position before putting it into service.**

X-PRO BLADE ADJUSTMENT

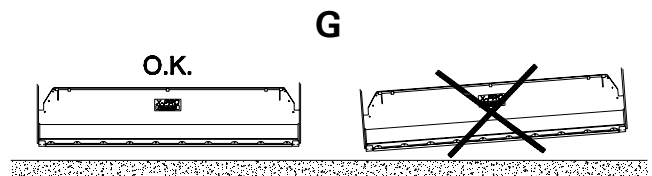
- 1) Adjust the superior attachment of your tractor's 3 point hitch (if it is adjustable) to the highest position. It procures a smaller slant when lifting (reducing the angle H).
- 2) Lift the snowblower with the 3 point hitch and lower the X-PRO blade to the maximum extension (blade cylinders **D** must be extended to the maximum). Then, lower the snowblower until it is supported entirely by the X-PRO blade.
- 3) Use two 1 1/2" wrenches to adjust the threaded cylinder adjustment **B** and get an approximate height of **10"** under the snowblower' scraper blade.

Verify that the TIVAR or steel skid shoes are parallel to the ground or slightly raised on tractor side **F**.

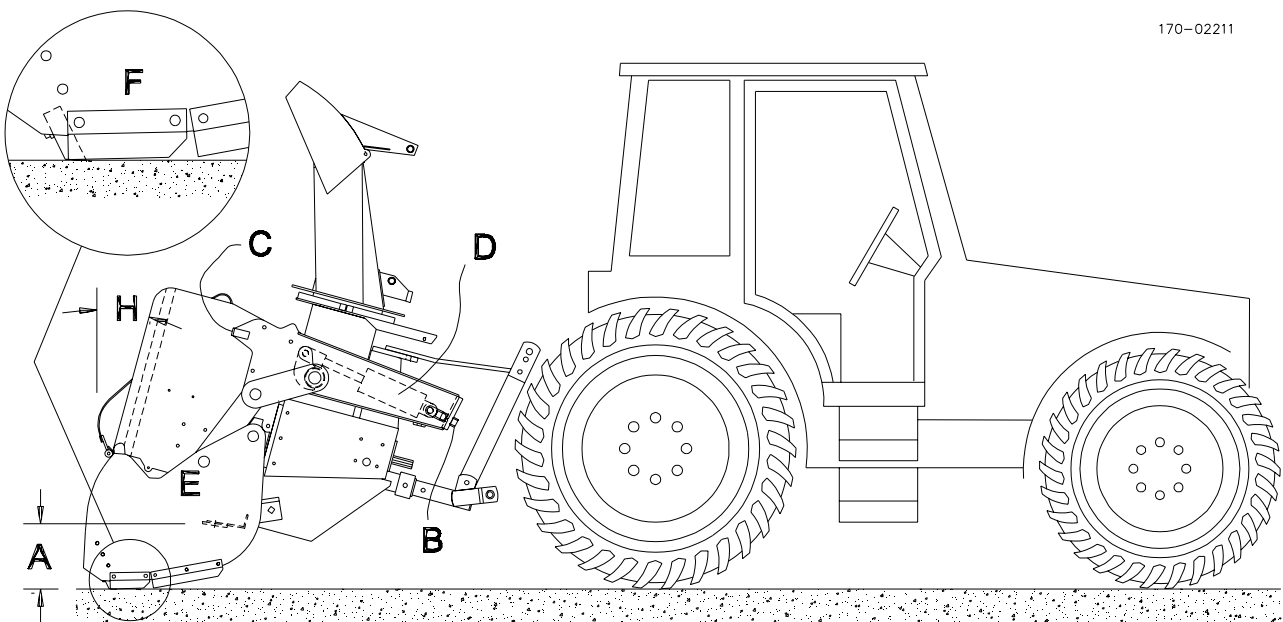
WARNING: After having adjusted the two cylinders, set the two threaded cylinder adjustments **B** in order to permit free cylinder movement **D**.

- 4) Lift the **snowblower** a couple inches and verify if the **blade** is parallel to the ground **G**. Rectify if needed by using the two threaded cylinders adjustments **B**. **WARNING:** You must make sure the **snowblower** unit is parallel to the ground. If this is not the case, check the 3 point hitch on the tractor or the level of the ground.
- 5) Lift up the snowblower and lift the X-PRO blade the highest possible. The sides **E** must rest on stoppers **C**. A relief valve has been installed to protect the mechanism when the blade rests on the stoppers. If the pressure on this valve is too low, the X-PRO blade can go up slightly if we lower the snowblower too rapidly on the blade. For an optimal adjustment, tighten the valve adjustment screw to the maximum and then unscrew a half-turn.

5

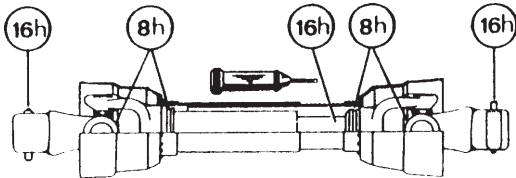


170-02211



MAINTENANCE

- 1) Wipe off all grease fittings with a clean cloth before adding grease in order to avoid injecting dirt and sand.
- 2) Repair or replace damaged grease fittings.
- 3) Lubricate all grease fittings every 8 hours of operation.
- 4) Oil drive chain every 8 hours of operation.
- 5) Lubricate P.T.O. shaft as indicated below:



Pull out the P.T.O. and lubricate between the two tubes with low temperature grease. Drive line tubes must slide easily even in cold weather. Clean off old hardened grease and apply fresh grease as needed.

- 6) Check oil level in gear box once a month. If necessary add oil.

- 7) Check tension of drive chain every 24 hours of operation and adjust if necessary.
- 8) Check for tightness of bearing collars every 48 hours of operation.
- 9) Change gearbox oil once a year. Use gear box oil S.A.E. W90 rated API, class GL-5.
- 10) Check all nuts and bolts once a year. If necessary use torque chart on page 43.
- 11) Standard scraper blades are reversible. Reverse when one edge is worn out.
- 12) Always use Grade 5 shear bolts.
- 13) UHMW slides do not require lubrication except at the end of the season in order to prevent corrosion of steel components that are in contact with the UHMW material.

STORAGE

- 1) Store the Snowblower in a cool, dry place.
- 2) Support the Snowblower with wooden blocks.
- 3) Keep all piston rods in the retracted position. This will assure better protection against the elements.
- 4) Clean your Snowblower.
- 5) Thoroughly inspect all parts of the Snowblower. Replace or repair worn or defective parts.
- 6) Touch-up or repaint if necessary.
- 7) Lubricate all points before storage.

TROUBLESHOOTING

P.T.O. SHAFT

PROBLEM	POSSIBLE CAUSE	CORRECTION
<ul style="list-style-type: none"> - Premature wear of U-joints and/ or bluish color of cross journals. 	<ul style="list-style-type: none"> - Insufficient lubrication. - Excessive working angle. 	<ul style="list-style-type: none"> - Follow lubrication recommendations. - Replace defective U-joints. - Make sure the snowblower inlet face is perpendicular to the ground and if possible readjust 3-point hitch in order to position the snowblower further away from tractor.
<ul style="list-style-type: none"> - Gripping or premature wear of telescoping members. 	<ul style="list-style-type: none"> - Too much sliding under load. - Tube overlap too-short: minimum recommended is 6". - Insufficient lubrication. - Contaminants (sand, etc.). 	<ul style="list-style-type: none"> - Avoid raising snowblower while in operation. - Readjust 3-point hitch in order to position the snowblower closer to the tractor. - Follow lubrication recommendations. - Replace defective telescopic members.
<ul style="list-style-type: none"> - Damaged or jammed locking pin or bolt. 	<ul style="list-style-type: none"> - Pin or orifice contaminated by sand, ice, etc. - Telescoping members too long, exerting pressure on locking device. 	<ul style="list-style-type: none"> - Clean and grease. - Readjust 3-point hitch in order to position the snowblower further away from tractor.
<ul style="list-style-type: none"> - Premature wear of guard tube bearing ring. 	<ul style="list-style-type: none"> - Lack of lubrication. - Wrong installation of guard chain. - Part of the guard in contact with the equipment. 	<ul style="list-style-type: none"> - Follow lubrication instructions. - Adjust chain to prevent interference between guard & equipment. - Replace worn or damaged bearing rings.
<ul style="list-style-type: none"> - Cut or deformed safety guard tubes. 	<ul style="list-style-type: none"> - Tubes in contact with the equipment. 	<ul style="list-style-type: none"> - Eliminate any interference between tubes and equipment or tractor. - Replace damaged tubes.

TROUBLESHOOTING (cont'd)

SNOWBLOWER

PROBLEM	POSSIBLE CAUSE	CORRECTION
- The snow is not being thrown as far as usual.	<ul style="list-style-type: none"> - Tractor RPM too low. - Gap too wide between impeller blade tip and drum outlet wall. - Insufficient tractor HP. 	<ul style="list-style-type: none"> - Raise P.T.O. speed to a minimum of 540 RPM. - Adjust impeller blades closer to drum outlet (1/8" to 3/16"). - Reduce travel speed.
- Frequent plugging of discharge chute.	<ul style="list-style-type: none"> - Tractor RPM too low. - Tractor RPM reduced too early with snow still in the snowblower. - Slippage of PTO clutch mechanism. - Wet snow condition. 	<ul style="list-style-type: none"> - Raise P.T.O. speed to a minimum of 540 RPM. - Make sure the snowblower is completely empty before reducing RPM, especially on tractors with foot controlled RPM. - Repair clutch. - Reduce travel speed.
- The impeller will not turn.	<ul style="list-style-type: none"> - Shear bolt broken on drive shaft. 	<ul style="list-style-type: none"> - Replace shear bolt.
- The auger will not turn.	<ul style="list-style-type: none"> - Shear bolt broken on drive shaft. - Shear bolt broken on auger drive shaft. - Broken drive chain. 	<ul style="list-style-type: none"> - Replace shear bolt. - Replace shear bolt. - Fix or replace chain.
- The chute will not turn.	<ul style="list-style-type: none"> - Ice accumulation. - Wrong hydraulic connections. 	<ul style="list-style-type: none"> - Remove ice. - Check hydraulic connections.

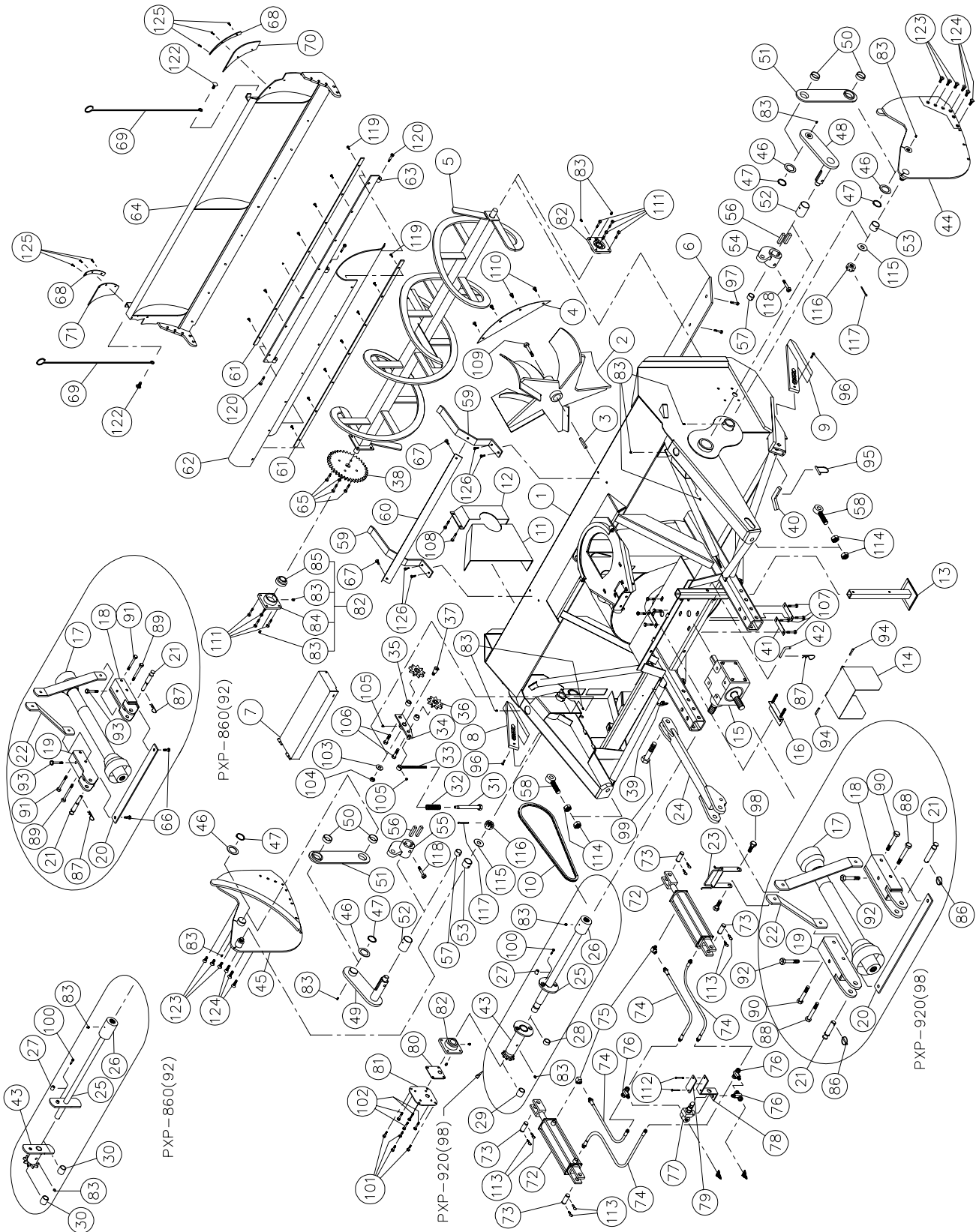
SPECIFICATIONS

Snowblower model	PXP-860	PXP-860 -92	PXP-920	PXP-920 -98
Horse power recommended (HP) min - max	65-80	65-80	80-120	80-120
Cutting width	(inches)	86"	92"	98"
	(centimeters)	218	234	249
Cutting height	(inches)	36"	36"	39"
	(centimeters)	91.5	91.5	99
Impeller diameter	(inches)	28"	28"	30"
	(centimeters)	71	71	76
Depth of drum	(inches)	12"	12"	12"
	(centimeters)	30.5	30.5	30.5
Impeller blades	4	4	5	5
Size of impeller shaft	(inches)	1 9/16"	1 9/16"	2"
	(centimeters)	3.97	3.97	5.08
Height - Impeller center	(inches)	17½"	17½"	18½"
	(centimeters)	44.5	44.5	47.0
Impeller RPM	540	540	540	540
Number of augers	1	1	1	1
Main auger diameter	(inches)	23"	23"	23"
	(centimeters)	58	58	58
Upper auger 13"/33 cm dia.	-	-	-	-
Drive chain - main auger	80	80	80	80
Oil bath sealed gear box	Std.	Std.	Std.	Std.
Chute rotation mechanism for hyd. motor	Std.	Std.	Std.	Std.
Number of shear bolts	2	2	2	2
Hitch category	1 & 2	1 & 2	2	2
Balanced impeller	Std.	Std.	Std.	Std.
Balanced auger	Std.	Std.	Std.	Std.
Drum rotation mechanism	Hyd. cylinder	-	-	-
	Hyd. motor	-	-	-
1000 to 540 RPM reducer	Opt.	Opt.	Opt.	Opt.
Scraper blades	Std. steel - not rev.	-	-	-
	Std. steel - rev.	Std.	Std.	Std.
	Carbon steel 3/8" x 2½"	-	-	-
	Carbon steel 1/2" x 4"	Opt.	Opt.	Opt.
	Carbon steel 1/2" x 6"	Opt.	Opt.	Opt.
Adjustable skid shoes	Standard steel	Std.	Std.	Std.
	CHT-360 steel	Opt.	Opt.	Opt.
Full flight auger (industrial)	Opt.	Opt.	Opt.	Opt.
Semi-industrial chute	Opt.	Opt.	Opt.	Opt.
Industrial chute	Opt.	Opt.	Opt.	Opt.
24" or 48" (61-122cm) chute extension	Opt.	Opt.	Opt.	Opt.
Hydraulic telescopic industrial chute	-	-	-	-
Deflector manual or hydraulic	Disp.	Disp.	Disp.	Disp.
Bearing / ductile iron casting	Std.	Std.	Std.	Std.
Lateral blades	Opt.	Opt.	Opt.	Opt.
P.T.O. (standard)	No. 6	No. 6	No. 8	No. 8
P.T.O. (optionnal)	No. 8	No. 8	No. 9	No. 9
Weight (approx.)	(lbs)	1748	1787	2570
	(kg)	795	812	1168

Design and specifications subject to change without notice.

SNOWBLOWERS PXP-860 PXP-860-92 PXP-920 PXP-920-98

170-03371



SNOWBLOWERS PXP-860 PXP-860-92 PXP-920 PXP-920-98

REF.	PART #	DESCRIPTION	QTY			
			PXP-860	PXP-860-92	PXP-920	PXP-920-98
1	120-04451	Frame PXP-860	1	-	-	-
1	120-04651	Frame PXP-860-92	-	1	-	-
1	120-04401	Frame PXP-920	-	-	1	-
1	120-04631	Frame PXP-920-98	-	-	-	1
2	110-01882	Impeller 28" dia. 4 blades	1	1	-	-
2	110-04742	Impeller 30" dia. 5 blades	-	-	1	1
3	8030	Square key 3/8" x 3/8" x 3 1/2" lg	1	1	-	-
3	9285	Square key 1/2" x 1/2" x 4" lg	-	-	1	1
4	130-02111	Deflector	-	-	1	1
5	8025	Auger PXP-860	1	-	-	-
5	110-13201	Auger PXP-860-92	-	1	-	-
5	110-02061	Auger PXP-920	-	-	1	-
5	110-05171	Auger PXP-920-98	-	-	-	1
6	140-00911	Reversible scraper blade 3/8" x 4" x 79 1/2" lg	1	-	-	-
6	140-09491	Reversible scraper blade 3/8" x 4" x 85 1/2" lg	-	1	-	-
6	140-00811	Reversible scraper blade 3/8" x 4" x 84 1/2" lg	-	-	1	-
6	140-00831	Reversible scraper blade 3/8" x 4" x 90 1/2" lg	-	-	-	1
7	110-20551	Side shaft guard for PXP-860	1	-	-	-
7	110-20961	Side shaft guard for PXP-860-92	-	1	-	-
7	110-15271	Side shaft guard for PXP-920	-	-	1	-
7	110-15281	Side shaft guard for PXP-920-98	-	-	-	1
8	110-03151	Skid shoe (left side)	1	1	-	-
8	110-04521	Skid shoe (left side)	-	-	1	1
9	110-05491	Skid shoe (right side)	1	1	-	-
9	110-04531	Skid shoe (right side)	-	-	1	1
10	190-01441	Chain #80 x 77" lg (77 links)	1	1	-	-
10	190-00431	Chain #80 x 79" lg (79 links)	-	-	1	1
11	130-02001	Inside guard (welded)	1	1	-	-
11	130-01382	Inside guard (welded)	-	-	1	1
12	8018	Inside guard (bolted)	1	1	-	-
12	8925	Inside guard (bolted)	-	-	1	1
13	8219	Storage support	1	1	-	-
13	9462	Storage support	-	-	1	1
14	110-12421	Hinged P.T.O. shroud	1	1	-	-
14	110-12541	Hinged P.T.O. shroud	-	-	1	1
15	8251	Gear box T27D	1	1	-	-
15	9307	Gear box	-	-	1	1
16	8199	Adjustment plate for gear box + 4 nuts 1/2" NC	1	1	-	-
16	9428	Adjustment plate for gear box + 4 nuts 1/2" NC	-	-	1	1
17	8202	P.T.O. shaft T60	1	1	-	-
17	9225-EG	P.T.O. shaft T80	-	-	1	1
18	110-15052	Right lower hitch	1	1	-	-
18	110-15214	Right lower hitch	-	-	1	1
19	110-15051	Left lower hitch	1	1	-	-
19	110-15213	Left lower hitch	-	-	1	1
20	140-10871	Brace	1	1	-	-
20	140-03431	Brace	-	-	1	1
21	8004	Pin category 1 & 2	2	2	-	-
21	9269	Pin category 2	-	-	2	2
22	140-10751	3-points side bar	2	2	-	-
22	140-05492	3-points side bar	-	-	2	2
23	110-15291	Hoses support	1	1	-	-
23	110-15201	Hoses support	-	-	1	1

SNOWBLOWERS PXP-860 PXP-860-92 PXP-920 PXP-920-98

REF.	PART #	DESCRIPTION	QTY			
			PXP-860	PXP-860-92	PXP-920	PXP-920-98
24	110-15091	Upper hitch	1	1	-	-
24	110-15421	Upper hitch	-	-	1	1
25	110-05651	Auger drive shaft 32 7/16" lg overall (includes no. 26 and 27)	1	-	-	-
25	110-13171	Auger drive shaft 35 7/16" lg overall (includes no. 26 and 27)	-	1	-	-
25	110-18251	Auger drive shaft 34 1/8" lg overall (includes no. 26 and 27)	-	-	1	-
25	110-18261	Auger drive shaft 37 1/8" lg overall (includes no. 26 and 27)	-	-	-	1
26	6466	Splined adaptor 1 1/4" - 19 splines (welded)	1	1	-	-
26	6467	Splined adaptor 1 3/4" - 20 splines (welded)	-	-	1	1
27	150-01491	Splined adaptor 1/4" i.d. x 7/8" o.d. x 3/4" lg (welded)	2	2	-	-
27	150-03911	Splined adaptor 5/16" i.d. x 1" o.d. x 3/4" lg (welded)	-	-	2	2
28	160-06901	Aluminium-bronze bushing 1 3/4" i.d. x 2" o.d. x 1/2" lg	-	-	1	1
29	160-07311	Aluminium-bronze bushing 1 1/2" i.d. x 1 7/8" o.d. x 1 1/4" lg	-	-	1	1
30	8009	Brassw bushing 1 1/4" i.d. x 1 1/2" o.d. x 1 3/16" lg	2	2	-	-
31	110-01221	Threaded tube for idler adjustment	1	1	-	-
31	110-01071	Threaded tube for idler adjustment	-	-	1	1
32	9473	Compression spring	1	1	1	1
33	110-01232	Threaded rod for idler adjustment + nut 7/16" NC	1	1	-	-
33	110-01063	Threaded rod for idler adjustment + nut 7/16" NC	-	-	1	1
34	110-01211	Idler	1	1	-	-
34	110-01052	Idler	-	-	1	1
35	336-48000	Nut 7/8" NC	2	2	-	-
35	160-06511	Spacer 3/4" i.d. x 1 1/4" o.d. x 3/4" lg	-	-	2	2
36	9287	Idler sprocket #80 (steel)	2	2	2	2
37	150-00381	Idler clevis pin	1	1	-	-
37	150-00332	Idler clevis pin	-	-	1	1
38	8185	Sprocket 80A30 T 1 1/4" dia.	1	1	-	-
38	9281	Sprocket 80A30 T 1 1/2" dia.	-	-	1	1
39	8373	Clamp fastener (welded)	1	1	1	1
40	140-01861	Skid shoes lock	2	2	-	-
40	140-03361	Skid shoes lock	-	-	2	2
41	140-10571	Back plate	3	3	-	-
41	140-10761	Back plate	-	-	3	3
42	8220	Storage support pin	1	1	1	1
43	8184	Sprocket #80 + shearplate (includes no. 30)	1	1	-	-
43	110-18241	Sprocket #80 + shearplate (includes no. 28 & 29)	-	-	1	1
44	110-22352	Pivoting side (right)	1	1	-	-
44	110-22162	Pivoting side (right)	-	-	1	1
45	110-22351	Pivoting side (left)	1	1	-	-
45	110-22161	Pivoting side (left)	-	-	1	1
46	8345	Spacer 2" i.d. x 3" o.d. x 14g thickness	4	4	4	4
47	8346	Retaining ring 2"	4	4	4	4
48	110-09393	Pivoting lever (right side)	1	1	-	-
48	110-09243	Pivoting lever (right side)	-	-	1	1
49	110-09394	Pivoting lever (left side)	1	1	-	-
49	110-09244	Pivoting lever (left side)	-	-	1	1
50	160-04421	Bushing 2" i.d. x 2 1/4" o.d. x 3/4" lg	4	4	4	4
51	110-22411	Transfer plate	2	2	-	-
51	110-22151	Transfer plate	-	-	2	2
52	160-04371	Bushing 2" i.d. x 2 1/4" o.d. x 3 3/16" lg	2	2	-	-
52	160-06501	Bushing 2 1/2" i.d. x 2 3/4" o.d. x 3 3/16" lg	-	-	2	2
53	160-11331	Bushing 1 3/4" i.d. x 2" o.d. x 1 11/16" lg	2	2	2	2
54	110-09382	Right cylinder lever	1	1	-	-

SNOWBLOWERS PXP-860 PXP-860-92 PXP-920 PXP-920-98

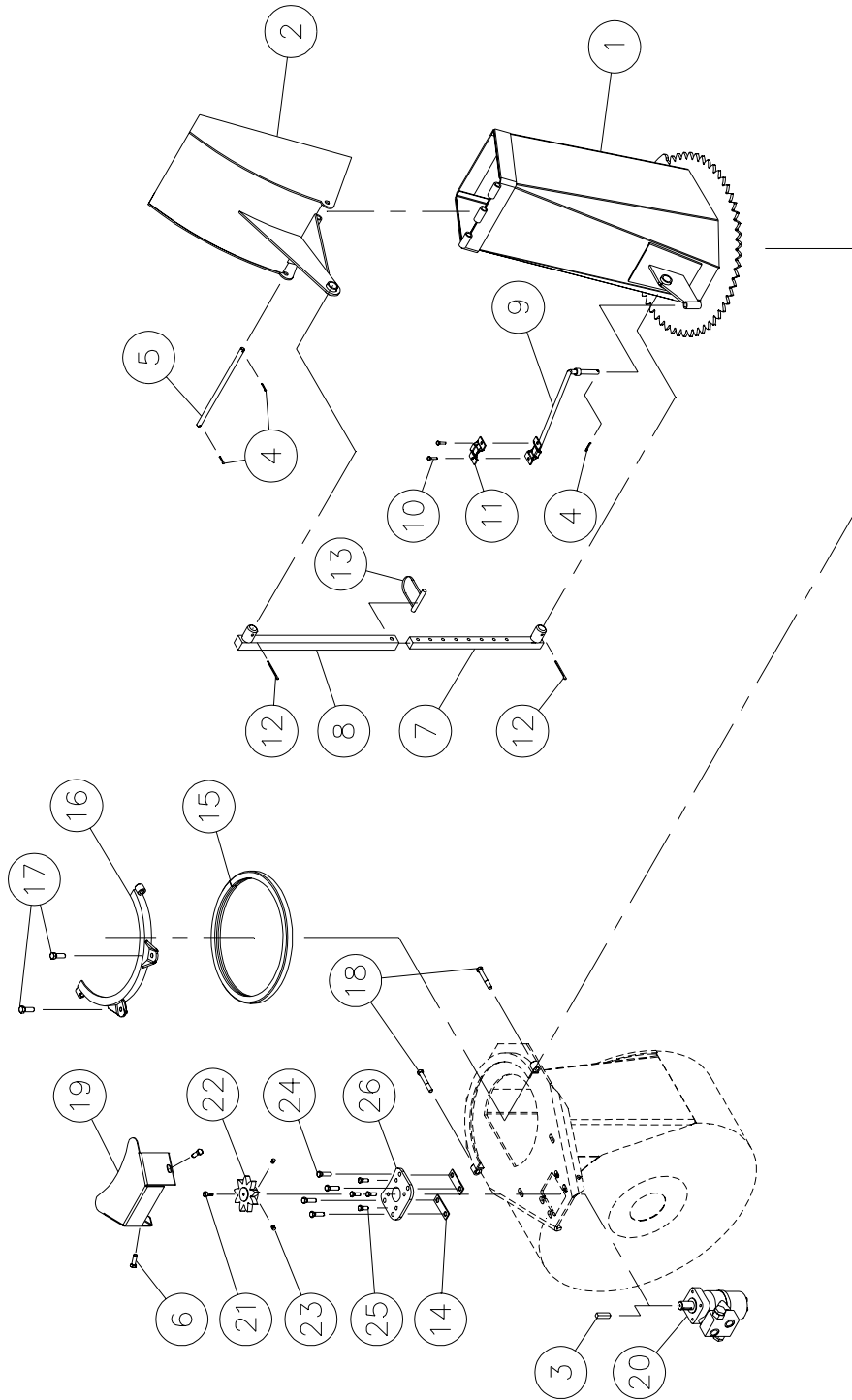
REF.	PART #	DESCRIPTION	QTY			
			PXP-860	PXP-860-92	PXP-920	PXP-920-98
54	110-09234	Right cylinder lever	-	-	1	1
55	110-09381	Left cylinder lever	1	1	-	-
55	110-09233	Left cylinder lever	-	-	1	1
56	140-06091	Square key 5/8" x 5/8" x 3" lg	4	4	-	-
56	140-09161	Square key 3/4" x 3/4" x 3" lg	-	-	4	4
57	160-04391	Bushing 1 1/4" i.d. x 1 1/2" o.d. x 1" lg	2	2	2	2
58	110-12322	Threaded cylinder adjustment	2	2	2	2
59	140-07221	Shroud stowage bracket	2	2	-	-
59	140-07691	Shroud stowage bracket	-	-	2	2
60	130-10701	Shroud stowage angle iron	1	1	-	-
60	130-11041	Shroud stowage angle iron	-	-	1	1
61	140-07301	Back plate for shroud hinge and stationary hold down 1/4" x 1" x 65" lg	2	-	-	-
61	140-07291	Back plate for shroud hinge and stationary hold down 1/4" x 1" x 71" lg	-	2	2	-
61	140-06431	Back plate for shroud hinge and stationary hold down 1/4" x 1" x 77" lg	-	-	-	2
62	190-02442	Shroud 34" x 65"	1	-	-	-
62	190-05151	Shroud 34" x 71"	-	1	-	-
62	190-02212	Shroud 35" x 71"	-	-	1	-
62	190-02522	Shroud 35" x 77"	-	-	-	1
63	110-22421	Shroud hinge 65" lg	1	-	-	-
63	110-09531	Shroud hinge 71" lg	-	1	1	-
63	110-23221	Shroud hinge 77" lg	-	-	-	1
64	110-22391	Plow	1	-	-	-
64	110-22181	Plow	-	1	1	-
64	110-23211	Plow	-	-	-	1
65	300-38310	Bolt 7/16" NC x 1 1/2" lg + two-way locknut	4	4	4	4
66	300-40310	Bolt 1/2" NC x 1 1/2" lg + nylon locknut	2	2	-	-
67	319-38280	Plow bolt 7/16" NC x 1 1/4" + nut & rlock washer	2	2	2	2
68	140-06161	Flap hold down 1/8" x 1" x 10" lg	2	2	2	2
69	190-02193	Proximity indicator	2	2	2	2
70	190-02221	Right flap	1	1	1	1
71	190-02222	Left flap	1	1	1	1
72	30 TR 06	Cylinder 3" x 6" stroke	2	2	-	-
72	30 TR 08	Cylinder 3" x 8" stroke	-	-	2	2
73	51421	Clevis pin 1" dia.	4	4	4	4
74	190-02372	Hose 3/8" x 49" lg + 2 fittings 6U-108	4	4	-	-
74	190-02362	Hose 3/8" x 52" lg + 2 fittings 6U-108	-	-	4	-
74	190-02322	Hose 3/8" x 55" lg + 2 fittings 6U-108	-	-	-	4
75	C3409x8	Elbow 90 deg. 1/2" NPT M.F.	2	2	2	2
76	15855x8	«T» 1/2" swivel	3	3	3	3
77	8351	Relief valve 1/2" (JL-50)	1	1	1	1
78	140-08882	Hoses support	1	1	1	1
79	140-09401	Plate 1/4" x 2" x 4 5/16"	1	1	1	1
80	130-33221	Spacer plate	1	1	-	-
80	130-33031	Spacer plate	-	-	1	1
81	130-33231	Drive shaft access plate	1	1	-	-
81	130-33041	Drive shaft access plate	-	-	1	1
82	UCFD207-20	Bearing 1 1/4" + flange + 2 straight grease fitting	3	3	-	-
82	UCFD208-24	Bearing 1 1/2" + flange + 2 straight grease fitting	-	-	3	3
83	Std.	Grease fitting 1/4-28 straight	18	18	18	18
84	FD207	Flange for 2 grease fitting	3	3	-	-
84	FD208	Flange for 2 grease fitting	-	-	3	3
85	UC207-20	Bearing 1 1/4"	3	3	-	-

SNOWBLOWERS PXP-860 PXP-860-92 PXP-920 PXP-920-98

REF.	PART #	DESCRIPTION	QTY			
			PXP-860	PXP-860-92	PXP-920	PXP-920-98
85	UCF280-24	Bearing 1 1/2"	-	-	3	3
86	Std.	Lynch pin 1/4" x 1 3/4"	-	-	2	2
87	Std.	Hitch pin clip 5/32"	3	3	1	1
88	302-46610	Bolt 3/4" NF x 6 1/2" lg + nylon locknut	-	-	2	2
89	300-44550	Bolt 5/8" NC x 5 1/2" lg + nylon locknut	2	2	-	-
90	302-46580	Bolt 3/4" NF x 6" lg + nylon locknut	-	-	2	2
91	300-44520	Bolt 5/8" NC x 5" lg + nylon locknut	2	2	-	-
92	300-46550	Bolt 3/4" NC x 5 1/2" + nylon locknut	-	-	2	2
93	300-44490	Bolt 5/8" NC x 4 1/2" lg + nylon locknut	2	2	-	-
94	Std.	Roll pin 5/16" x 2" lg	2	2	2	2
95	8112	Lock pin 1/4"	2	2	2	2
96	300-32280	Bolt 1/4" NC x 1 1/4" lg + nylon locknut	2	2	-	-
96	300-32310	Bolt 1/4" NC x 1 1/2" lg + nylon locknut	-	-	2	2
97	319-38310	Plow bolt 7/16" NC x 1 1/2" lg + nylon locknut	8	9	-	-
97	319-38325	Plow bolt 7/16" NC x 1 3/4" lg + nut & lock washer	-	-	9	9
98	300-44355	Bolt 5/8" NC x 2 1/4" lg + nylon locknut	2	2	-	-
98	300-46400	Bolt 3/4" NC x 3" lg + flat washer 1 1/2" o.d. + nylon locknut	-	-	2	2
99	300-50400	Bolt 1" NC x 3" lg. + nylon locknut	1	1	-	-
99	300-54490	Bolt 1 1/4" NC x 4 1/2" lg + nylon locknut	-	-	1	1
100	300-32340	Bolt 1/4" NC grade 5 x 2" lg + nylon locknut	1	1	-	-
100	300-34340	Bolt 5/16" NC grade 5 x 2" lg + nylon locknut	-	-	1	1
101	300-40280	Bolt 1/2" NC x 1 1/4" lg + nylon locknut	4	4	4	4
102	300-40310	Bolt 1/2" NC x 1 1/2" lg + nylon locknut mince	4	4	4	4
103	376-44000	Flat washer 5/8"	1	1	1	1
104	346-45000	Nylon locknut 5/8" NC thin	1	1	1	1
105	Std.	Grease fitting 1/4"-28 90 deg.	2	2	2	2
106	300-46370	Bolt 3/4" NC x 2 1/2" lg + nylon locknut	2	2	2	2
107	300-40250	Bolt 1/2" NC x 1" lg + lock washer	8	8	-	-
107	300-44280	Bolt 5/8" NC x 1 1/4" lg + lock washer	-	-	8	8
108	300-36250	Bolt 3/8" NC x 1" lg + nylon locknut & flat washer	4	4	4	4
109	300-44310	Impeller cap screw 5/8" NC x 1 1/2 lg (ass.with lock-tite 242) + lock washer	1	1	1	1
110	301-38280	Bolt 7/16" NC x 1 1/4" lg + nylon locknut	-	-	4	4
111	300-40310	Bolt 1/2" NC x 1 1/2" lg + nylon locknut	8	8	-	-
111	300-40325	Bolt 1/2" NC x 1 3/4" lg + nylon locknut	-	-	8	8
112	300-32325	Bolt 1/4" NC x 1 3/4" lg + nylon locknut	2	2	2	2
113	51472	Hitch pin clip	8	8	8	8
114	339-50250	Nut 1"-14	4	4	4	4
115	376-50000	Flat washer 1"	2	2	2	2
116	357-50500	Castle nut 1"-14 x 9/16" thick	2	2	2	2
117	Std.	Cotter pin 5/32" x 2" lg	2	2	2	2
118	306-44460	Bolt 5/8" NC grade 12 x 4 1/2" lg + nylon locknut	2	2	2	2
119	300-34250	Bolt 5/16" NC x 1" lg + nylon locknut	14	16	16	16
120	300-38400	Bolt 7/16" NC x 3" lg + nylon locknut	3	3	3	3
122	321-40310	Carriage bolt 1/2" NC x 1 1/2" lg + nylon locknut	2	2	2	2
123	319-38310	Plow bolt 7/16" NC x 1 1/2" lg + nut & lock washer	6	6	6	6
124	319-38340	Plow bolt 7/16" NC x 2" lg + nut & lock washer	6	6	6	6
125	300-32250	Bolt 1/4" NC x 1" lg + nylon locknut & flat washer	6	6	6	6
126	300-36280	Bolt 3/8" NC x 1 1/4" lg + nylon locknut & flat washer	4	4	4	4

CHUTE CST-7486

170-03271

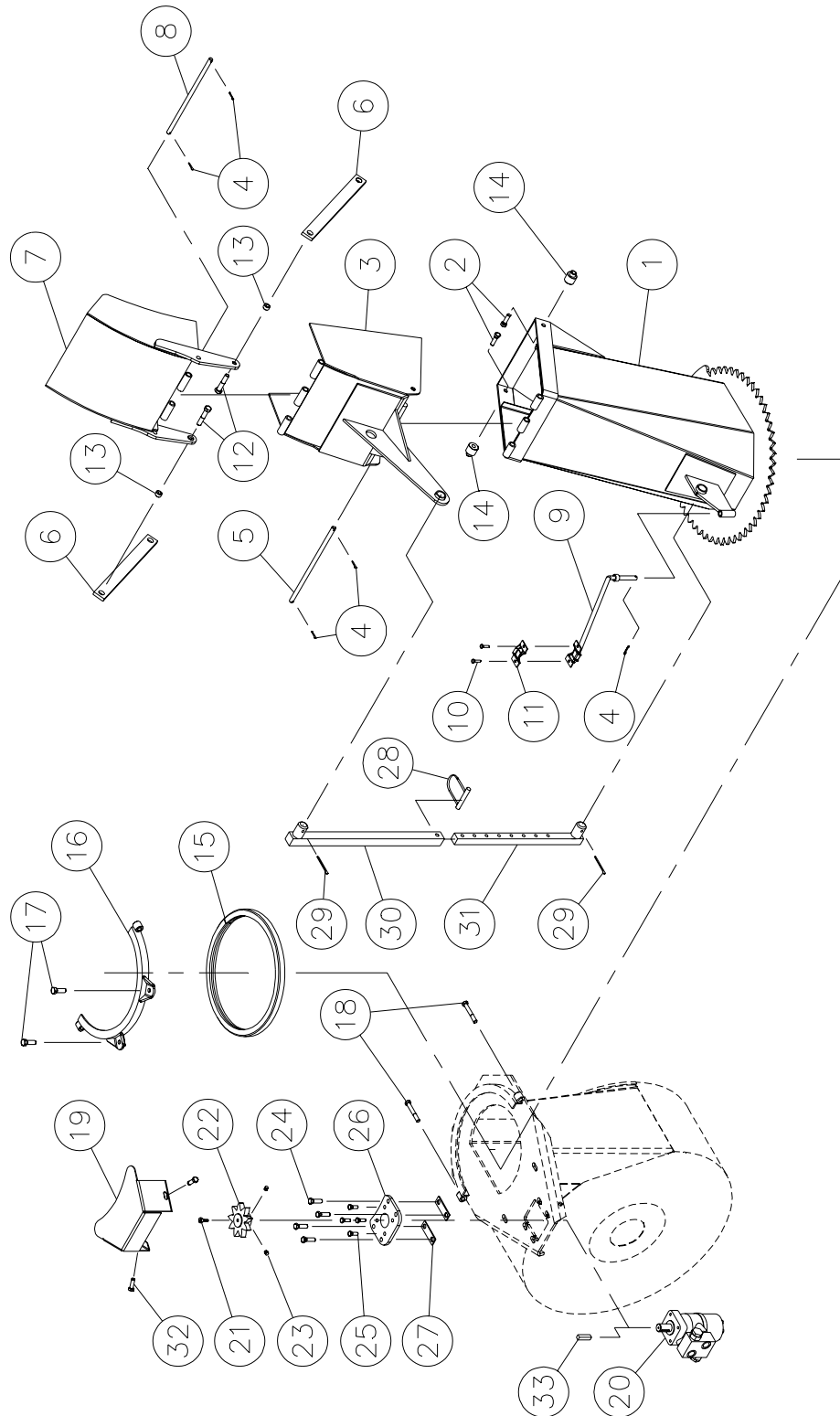


CHUTE CST-7486

REF.	PART #	DESCRIPTION	QTY
1	110-04401	Chute base	1
2	8370	Chute deflector	1
3	8369	Key for hydraulic orbit motor	opt.
4	Std.	Cotter pin 1/8" x 1" lg	3
5	8210	Chute deflector pin	1
6	300-38280	Bolt 7/16" NC x 1 1/4" lg + nylon locknut & flat washer	2
7	8145	Chute adjusting rod (1)	opt.
8	8146	Chute adjusting tube (1)	opt.
9	110-01112	Mounting support plate	1
10	300-32250	Bolt 1/4" NC x 1" lg. + nylon locknut	2
11	140-13071	Hoses mounting plate	1
12	Std.	Cotter pin 5/32" x 2" lg (2)	opt.
13	8112	Lock pin 1/4" (1)	opt.
14	140-09571	Spacer 1/8" x 1" x 3 1/4" lg for "Orbit" motor	2
15	8149	U-shaped UHMW approx. 14" int. dia.	1
16	110-01341	Retaining bracket	1
17	300-40310	Bolt 1/2" NC x 1 1/2" lg + nylon locknut & flat washer	2
18	300-38400	Bolt 7/16" NC x 3" lg + nylon locknut	2
19	130-08161	Guard	1
20	MLH-315	Hydraulic "Orbit" motor	opt.
21	300-32220	Bolt 1/4" NC x 3/4" lg + lock washer	1
22	110-04182	Sprocket 9 tooth	1
23	323-36160	Hexagonal socket set screw 3/8" NC x 3/8" lg	2
24	300-38310	Bolt 7/16" NC x 1 1/2" lg + nylon locknut & flat washer	4
25	300-36250	Bolt 3/8" NC x 1" lg + lock washer	4
26	130-08152	"Orbit" motor support	1

SEMI-INDUSTRIAL CHUTE PSI-7486

170-00592

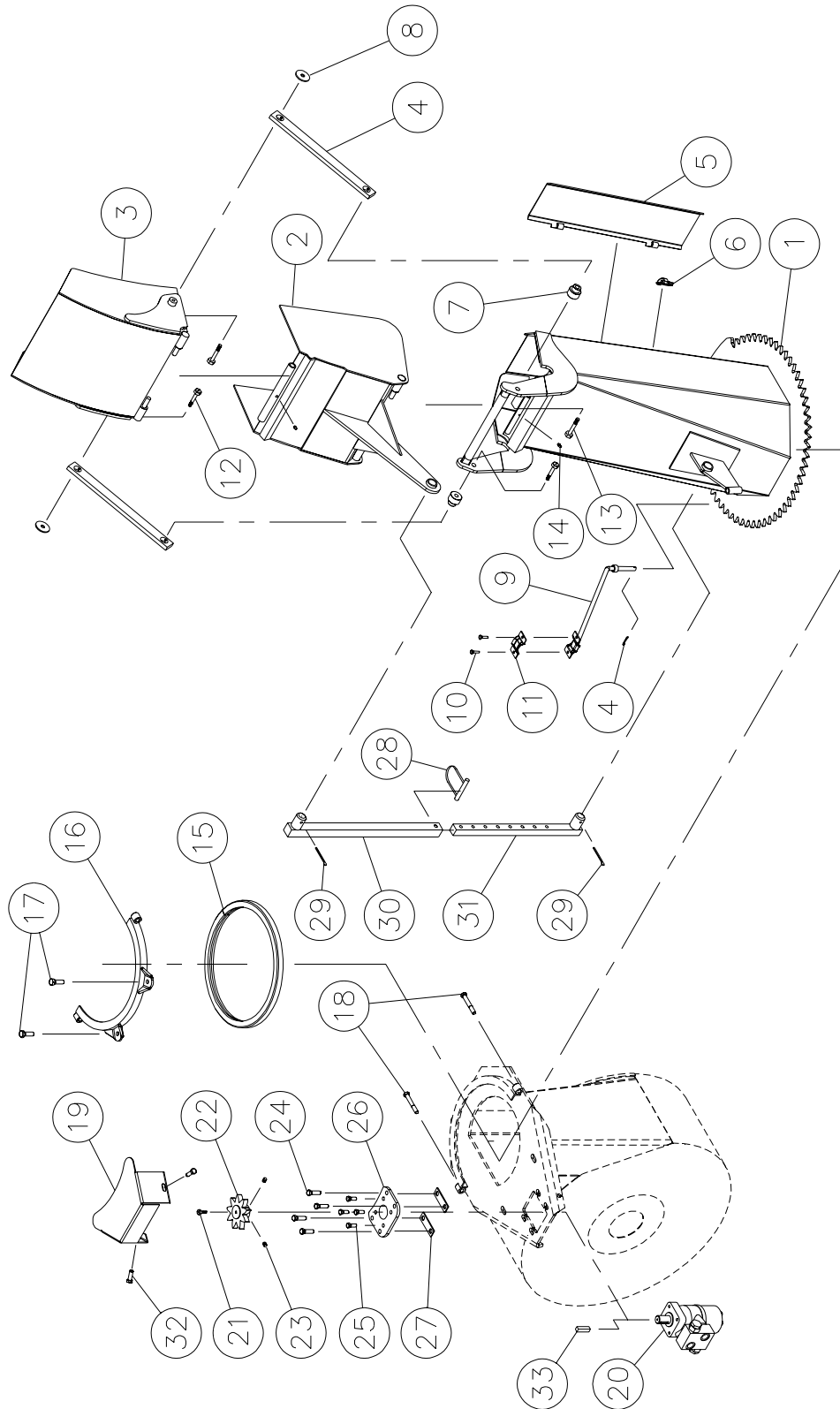


SEMI-INDUSTRIAL CHUTE PSI-7486

REF.	PART #	DESCRIPTION	QTY
1	110-04411	Chute base	1
2	300-40400	Bolt ½" x 3" lg + nylon lock nut + flat washer	2
3	110-17881	Lower chute deflector	1
4	Std.	Cotter pin 1/8" x 1" lg	5
5	8210	Lower chute deflector pin	1
6	140-11681	Connecting rod	2
7	110-17851	Upper chute deflector	1
8	8213	Upper chute deflector pin	1
9	110-01112	Threaded rod for idler adjustment	1
10	300-32250	Bolt 1/4" NC x 1" lg + nylon locknut	2
11	140-13071	Hose hold down	1
12	319-39310	Plow bolt 7/16" x 1 1/2" lg + nylon lock nut + flat washer	2
13	150-03831	Spacer for connecting rod (top)	2
14	150-03871	Spacer for connecting rod (bottom)	2
15	8149	U-shaped UHMW approx. 14" int. dia.	1
16	110-01341	Retaining bracket	1
17	300-40310	Bolt 1/2" NC x 1 1/2" lg + nylon locknut & flat washer	2
18	300-38400	Bolt 7/16" NC x 3" lg + nylon locknut	2
19	130-08161	Guard	1
20	MLH-315	Hydraulic "Orbit" motor	opt.
21	300-32220	Bolt 1/4" NC x 3/4" lg + lock washer	1
22	110-04182	Sprocket 9 tooth	1
23	323-36160	Hexagonal socket set screw 3/8" NC x 3/8" lg	2
24	300-38310	Bolt 7/16" NC x 1 1/2" lg + nylon locknut & flat washer	4
25	300-36250	Bolt 3/8" NC x 1" lg + lock washer	4
26	130-08152	"Orbit" motor support	1
27	140-09571	Spacer 1/8" x 1" x 3 1/4" lg for "Orbit" motor	2
28	8112	Lock pin 1/4" (1)	opt.
29	Std.	Cotter pin 5/32" x 2" lg (2)	opt.
30	8146	Chute adjusting tube (1)	opt.
31	8145	Chute adjusting rod (1)	opt.
32	300-38280	Bolt 7/16" x 1 1/4" lg + nylon locknut + flat washer	2
33	8369	Key for "Orbit" motor	opt.

SEMI-INDUSTRIAL CHUTE PSIG-7486

170-03391

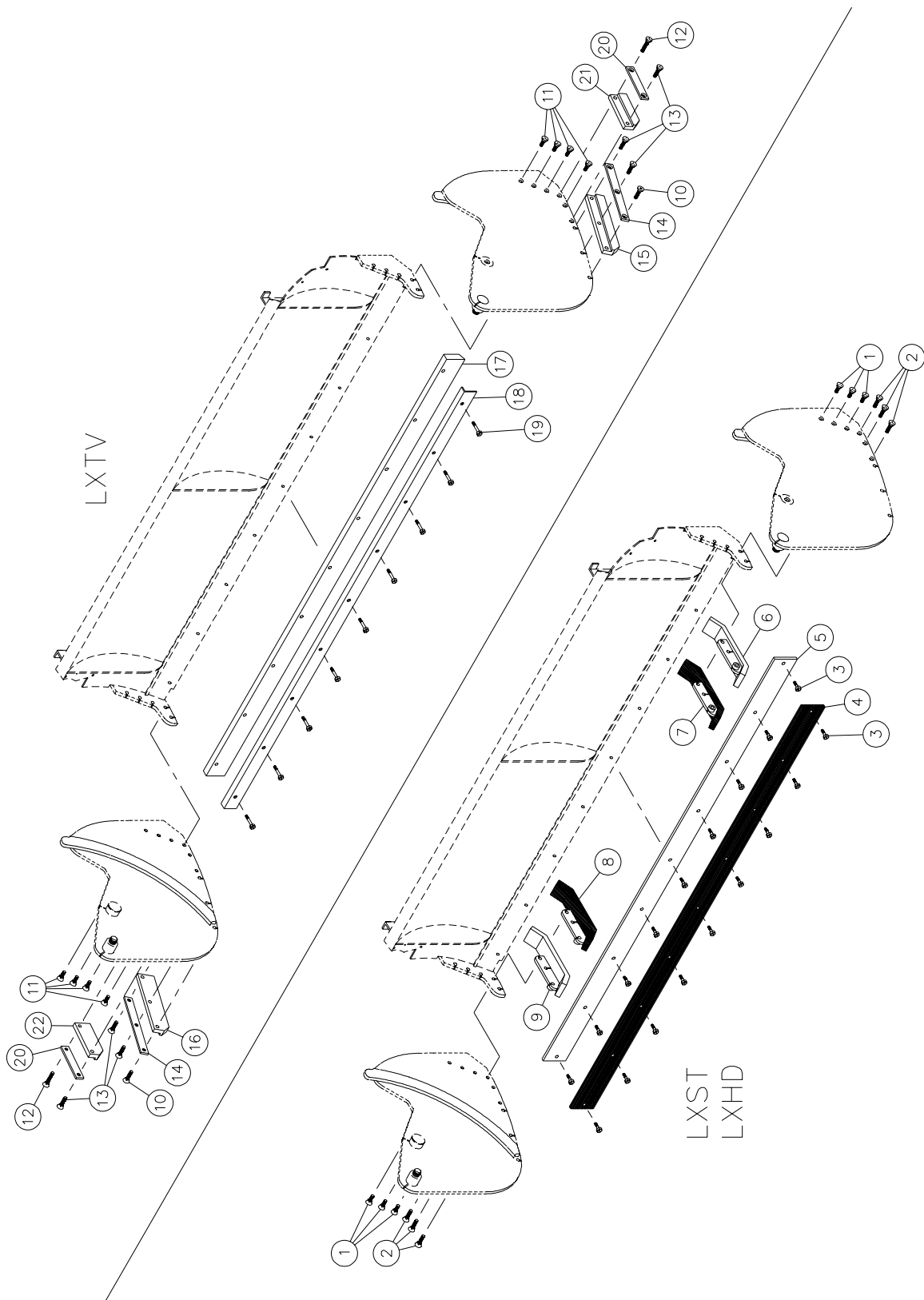


SEMI-INDUSTRIAL CHUTE PSIG -7486

REF.	PART #	DESCRIPTION	QTY
1	110-22501	Chute base	1
2	110-22521	Lower chute deflector	1
3	110-22511	Upper chute deflector	1
4	140-14041	Connecting rod	2
5	130-33501	Access panel.....	1
6	8373	Latch (welded)	1
7	150-05311	Spacer for connecting rod	2
8	378-36500	Washer	2
9	110-01112	Hose support	1
10	300-32250	Bolt 1/4" NC x 1" lg + nylon locknut	2
11	140-13071	Hose hold down	1
12	300-36280	Bolt 3/8" NC x 1 1/4" lg + nylon lock nut	2
13	300-40380	Bolt 1/2" NC x 2 3/4" lg + nylon lock nut & washer	2
14	Std.	Grease firtting 1/4"-28 straight	2
15	8149	U-shaped UHMW approx. 14" int. dia.	1
16	110-01341	Retaining bracket	1
17	300-40310	Bolt 1/2" NC x 1 1/2" lg + nylon locknut & flat washer	2
18	300-38400	Bolt 7/16" NC x 3" lg + nylon locknut	2
19	130-08161	Guard	1
20	MLH-315	Hydraulic "Orbit" motor	opt.
21	300-32220	Bolt 1/4" NC x 3/4" lg + lock washer	1
22	110-04182	Sprocket 9 tooth	1
23	323-36160	Hexagonal socket set screw 3/8" NC x 3/8" lg	2
24	300-38310	Bolt 7/16" NC x 1 1/2" lg + nylon locknut & flat washer	4
25	300-36250	Bolt 3/8" NC x 1" lg + lock washer	4
26	130-08152	"Orbit" motor support	1
27	140-09571	Spacer 1/8" x 1" x 3 1/4" lg for "Orbit" motor	2
28	8112	Lock pin 1/4" (1)	opt.
29	Std.	Cotter pin 5/32" x 2" lg (2)	opt.
30	8146	Chute adjusting tube (1)	opt.
31	8145	Chute adjusting rod (1)	opt.
32	300-38280	Bolt 7/16" x 1 1/4" lg + nylon locknut + flat washer	2
33	8369	Key for "Orbit" motor	opt.

SCRAPER BLADE AND SKID SHOES

170-03581



SCRAPER BLADE AND SKID SHOES

SCRAPER BLADE & SKID SHOES LXST (Standard steel)

RÉF.	PART #	DESCRIPTION	LXST	QTY		
				86	92	98
1	319-38310	Flow bolt 7/16" NCx 1 1/2" lg+ nut & lock washer		6	6	6
2	319-38340	Flow bolt 7/16" NCx 2" lg+ nut & lock washer		6	6	6
3	300-38310	Bolt 7/16" NCx 1 1/2" lg+ nylon locknut		9	9	10
5	140-07181	Standard steel scraper blade 3/8" x 4" x 81 3/4" lg		1	-	-
5	140-07171	Standard steel scraper blade 3/8" x 4" x 87 3/4" lg		-	1	-
5	140-06341	Standard steel scraper blade 3/8" x 4" x 93 3/4" lg		-	-	1
6	110-22282	Standard steel skid shoe (right)		1	1	1
9	110-22281	Standard steel skid shoe (left)		1	1	1

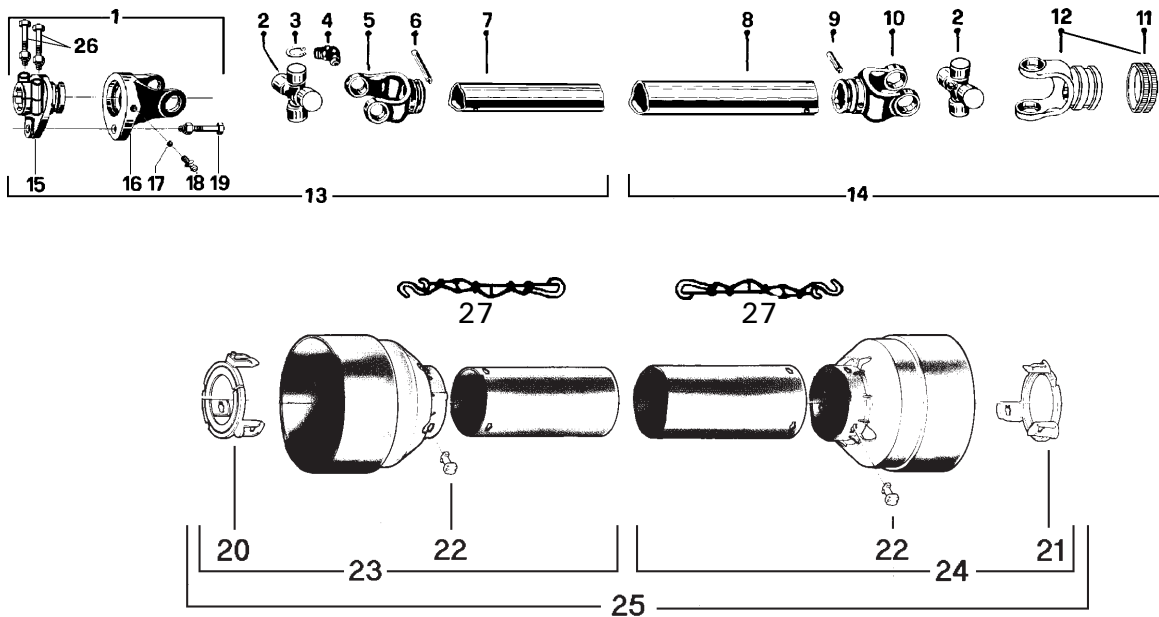
SCRAPER BLADE & SKID SHOES LXHD (CHT360 Steel)

REF.	PART #	DESCRIPTION	LX-HD	QTY		
				86	92	98
1	319-38310	Flow bolt 7/16" NCx 1 1/2" lg+ nut & lock washer		6	6	6
2	319-38340	Flow bolt 7/16" NCx 2" lg+ nylon locknut		6	6	6
3	300-38310	BOLT 7/16" NCx 1 1/2" lg+ nut & lock washer		9	9	10
4	130-10671	CHT360 steel scraper blade 1/2" x 4" x 81 3/4" lg		1	-	-
4	130-10661	CHT360 steel scraper blade 1/2" x 4" x 87 3/4" lg		-	1	-
4	130-10171	CHT360 steel scraper blade 1/2" x 4" x 93 3/4" lg		-	-	1
7	110-23532	CHT360 steel skid shoe (right)		1	1	1
8	110-23531	CHT360 steel skid shoe (left)		1	1	1

SCRAPER BLADE & SKID SHOES LXTV (TIVAR)

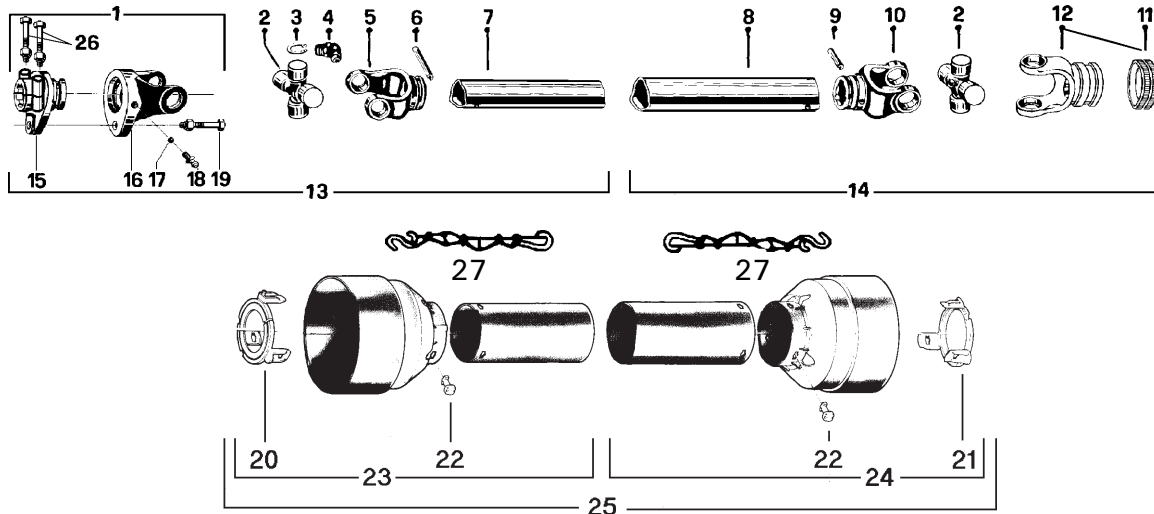
REF.	PART #	DESCRIPTION	LXTV	QTY		
				86	92	98
10	327-38325	Hexagonal socket head set screw 7/16" NCx 1 3/4" lg+ nut (thin)		2	2	2
11	319-38310	Flow bolt 7/16" NCx 1 1/2" lg+ nut & lock washer		8	8	8
12	319-38370	Flow bolt 7/16" NCx 2 1/2" lg+ nut & lock washer		2	2	2
13	319-38340	Flow bolt 7/16" NCx 2" lg+ nut & lock washer		6	6	6
14	140-08831	Skid shoe holder TIVAR 5/16" x 1 1/4" x 11 5/8" lg		2	2	2
15	190-03352	TIVAR skid shoe 11 5/8" lg (right)		1	1	1
16	190-03351	TIVAR skid shoe 11 5/8" lg (left)		1	1	1
17	190-02412	TIVAR scraper blade 1" x 3 1/2" x 87" lg		1	-	-
17	190-02402	TIVAR scraper blade 1" x 3 1/2" x 93" lg		-	1	-
17	190-02312	TIVAR scraper blade 1" x 3 1/2" x 99" lg		-	-	1
18	130-10632	Holder 84 3/4" lg for TIVAR scraper blade		1	-	-
18	130-10622	Holder 90 3/4" lg for TIVAR scraper blade		-	1	-
18	130-10192	Holder 96 3/4" lg for TIVAR scraper blade		-	-	1
19	300-38355	Bolt 7/16" NCx 2 1/4" lg+ nylon locknut		9	9	10
20	140-08841	Skid shoe holder TIVAR 5/16" x 1 1/4" x 6 7/16" lg		2	2	2
21	190-03362	TIVAR skid shoe 6 7/16" lg (right)		1	1	1
22	190-03361	TIVAR skid shoe 6 7/16" lg (left)		1	1	1

P.T.O. SHAFT # 8202 & 8202-1 (T60)



REF.	PART #	DESCRIPTION	8202	8202-1
1	8237	Safety shear yoke (2 bolts)	1	1
2	8238	U joint + 4 retaining rings + 1 grease fitting	2	2
3	8061	Retaining ring	8	8
4	8110	Grease fitting	2	2
5	8239	Yoke for inner tube	1	1
6	8075	Stopper for inner tube	1	1
7	8077	Inner tube	1	1
8	9212	Outer tube	1	1
9	9210-E	Stopper for outer tube	1	1
10	8240	Yoke for outer tube	1	1
11	8363	Collar kit	1	1
12	8250	Yoke with hole 1 3/8"-6 splines + yoke stopper (#11 included)	1	-
12	8250-1	Yoke with hole 1 3/8"-21 splines + yoke stopper (#11 included)	-	1
13	8241	P.T.O. section, SBI 1 3/8"-6, inner part, without protector	1	1
14	8242	P.T.O. section, QD 1 3/8"-6, outer part, without protector	1	-
14	8242-1	P.T.O. section, QD 1 3/8"-21, outer part, without protector	-	1
15	8243	Adaptor (2 bolts)	1	1
16	8244	Yoke and shearplate	1	1
17	9205	Ball	17	17
18	8071	Grease fitting	1	1
19	8218	Safety shear bolt M10 x 60mm	1	1
20	8245	Bearing ring for inner guard tube	1	1
21	8246	Bearing ring for outer guard tube	1	1
22	8109	Stopper	6	6
23	8247	Inner shield	1	1
24	8248	Outer shield	1	1
25	8249	Complete shield	1	1
26	8222	Bolt M12 x 70mm + lock nut	2	2
27	8308	Safety chain	2	2

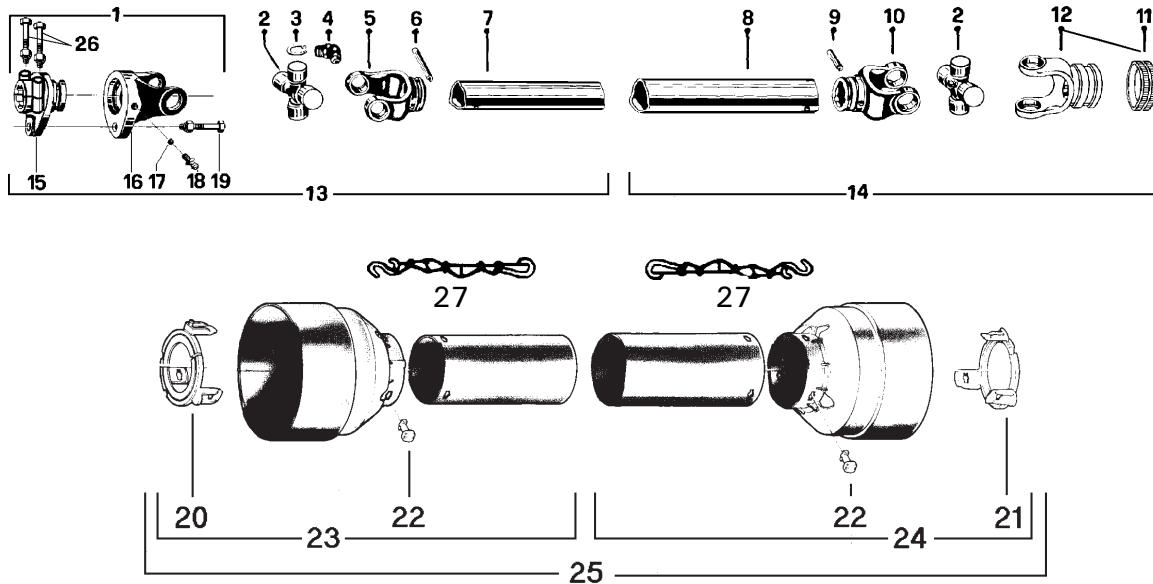
P.T.O. SHAFT # 9225-EG & 9569 (T80)



REF.	PART #	DESCRIPTION	QTY	
			9225-EG	9569
or [1	9570	Safety shear yoke M10 (2 bolts) 1 3/4" - 20 splines	-	1
[1	9453	Safety shear yoke M12 (2 bolts) 1 3/4" - 20 splines	1	1
2	9208	U-joint + 4 retaining rings + 1 grease fitting	2	2
3	9454	Retaining ring	8	8
4	8110	Grease fitting	2	2
5	9214	Yoke for inner tube	1	1
6	8075	Stopper for inner tube	1	1
7	9212	Inner tube	1	1
8	9211	Outer tube	1	1
9	9210-E	Stopper for outer tube	1	1
10	9209	Yoke for outer tube	1	1
11	8363	Collar kit	1	1
11	8364	Collar kit	-	opt.
12	9455	Yoke with hole 1 3/8"-6 splines + yoke stopper	1	-
12	9463	Yoke with hole 1 3/8"-21 splines + yoke stopper	-	1
12	9224	Yoke with hole 1 3/4"-20 splines + yoke stopper	-	opt.
13	9456	P.T.O. section, SBI 1 3/4"-20, inner part, without protector	1	1
14	9457	P.T.O. section, QD 1 3/8"-6, outer part, without protector	1	-
14	9457-2	P.T.O. section, QD 1 3/8"-21, outer part, without protector	-	1
or [15	9458	Adaptor 1 3/4"-20 splines (2 bolts) (hole 12 mm)	1	1
[15	9571	Adaptor 1 3/4"-20 splines (2 bolts) (hole 10 mm)	-	1
or [16	9204	Yoke and shearplate (hole 12 mm)	1	1
[16	9572	Yoke and shearplate (hole 10 mm)	-	1
17	9205	Ball	17	17
18	8071	Grease fitting	1	1
19	9207	Safety shear bolt M12 x 65 mm	1	-
or [19	9207-375	Safety shear bolt M12 x 65 mm diam. 3/8"	-	1
[19	8218	Safety shear bolt M10 x 60 mm	-	1
20	9459	Bearing ring for inner guard tube	1	1
21	9460	Bearing ring for outer guard tube	1	1
22	8109	Stopper	6	6
23	9221	Inner shield	1	1
24	9220	Outer shield	1	1
25	9222	Complete shield	1	1
26	9461	Bolt M12 x 90mm + lock nut	2	2
27	8308	Safety chain	2	2

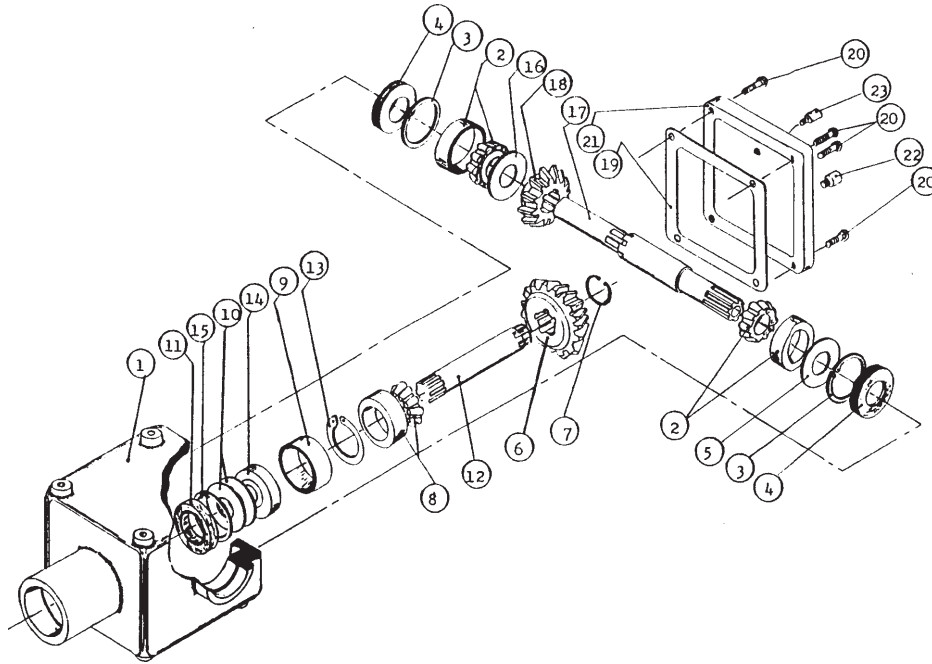
10

P.T.O. SHAFT # 9475, 9475-1 & 9475-2 (T90)



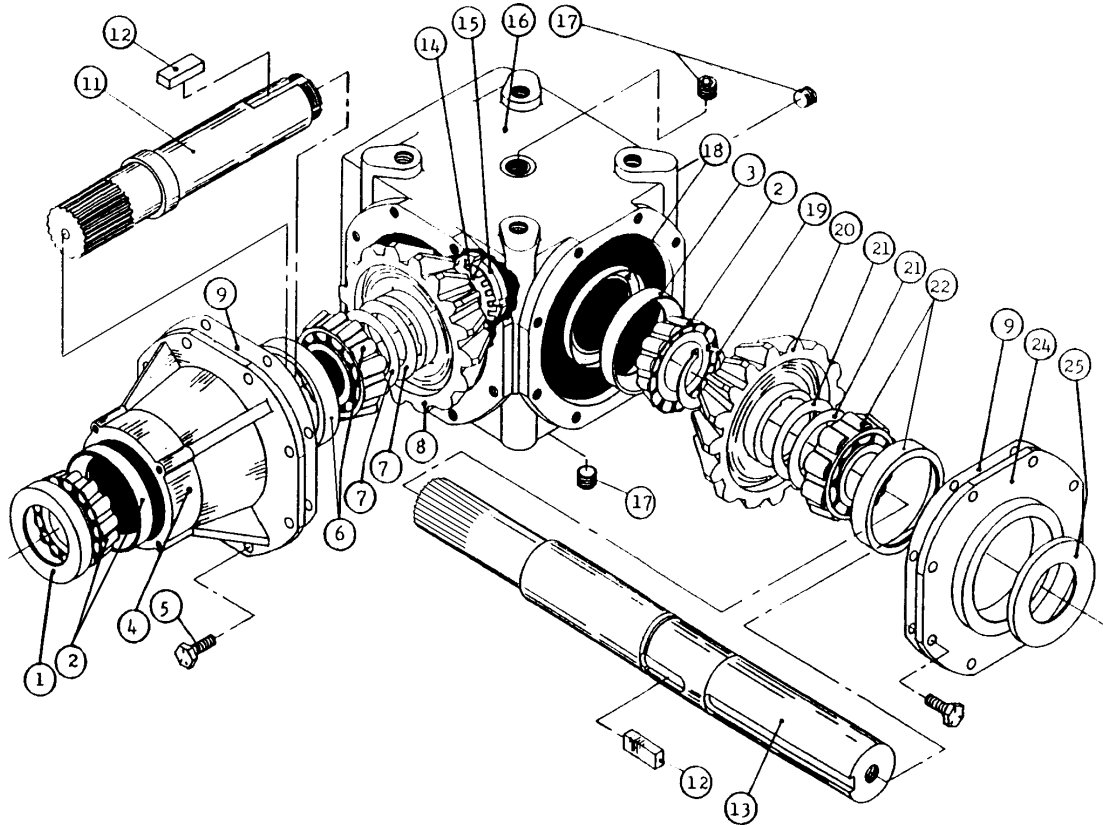
REF.	PART #	DESCRIPTION	QTY		
			9475	9475-1	9475-2
1	9476	Safety shear yoke (2 bolts) 1 3/4" - 20 splines	1	1	1
2	9477	U-joint + 4 retaining rings + 1 grease fitting	2	2	2
3	9478	Retaining ring	8	8	8
4	8110	Grease fitting	2	2	2
5	9479	Yoke for inner tube	1	1	1
6	9210	Stopper for tube	1	1	1
7	9212	Inner tube	1	1	1
8	9211	Outer tube	1	1	1
9	9210	Stopper for tube	1	1	1
10	9480	Yoke for outer tube	1	1	1
11	8363	Collar kit	1	1	-
11	8364	Collar kit	-	-	1
12	9481	Yoke with hole 1 3/8"-6 splines + yoke stopper	1	-	-
12	9482	Yoke with hole 1 3/8"-21 splines + yoke stopper	-	1	-
12	9483	Yoke with hole 1 3/4"-20 splines + yoke stopper	-	-	1
13	9484	P.T.O. section, SBI 1 3/4"-20, inner part, without protector	1	1	1
14	9485	P.T.O. section, QD 1 3/8"-6, outer part, without protector	1	-	-
14	9485-1	P.T.O. section, QD 1 3/8"-21, outer part, without protector	-	1	-
14	9485-2	P.T.O. section, QD 1 3/4"-20, outer part, without protector	-	-	1
15	9486	Adaptor 1 3/4"-20 splines (2 bolts)	1	1	1
16	9487	Yoke and shearplate	1	1	1
17	9205	Ball	24	24	24
18	8071	Grease fitting	1	1	1
19	9207	Safety shear bolt M12 x 65mm	1	-	-
19	9207-375	Safety shear bolt M12 x 65mm diam 3/8"	-	1	1
20	9459	Bearing ring for inner guard tube	1	1	1
21	9460	Bearing ring for outer guard tube	1	1	1
22	8109	Stopper	6	6	6
23	9221	Inner shield	1	1	1
24	9220	Outer shield	1	1	1
25	9222	Complete shield	1	1	1
26	8222	Bolt M12 x 70mm + lock nut	2	2	2
27	8308	Safety chain	2	2	2

GEAR BOX # 8251 (T27D)



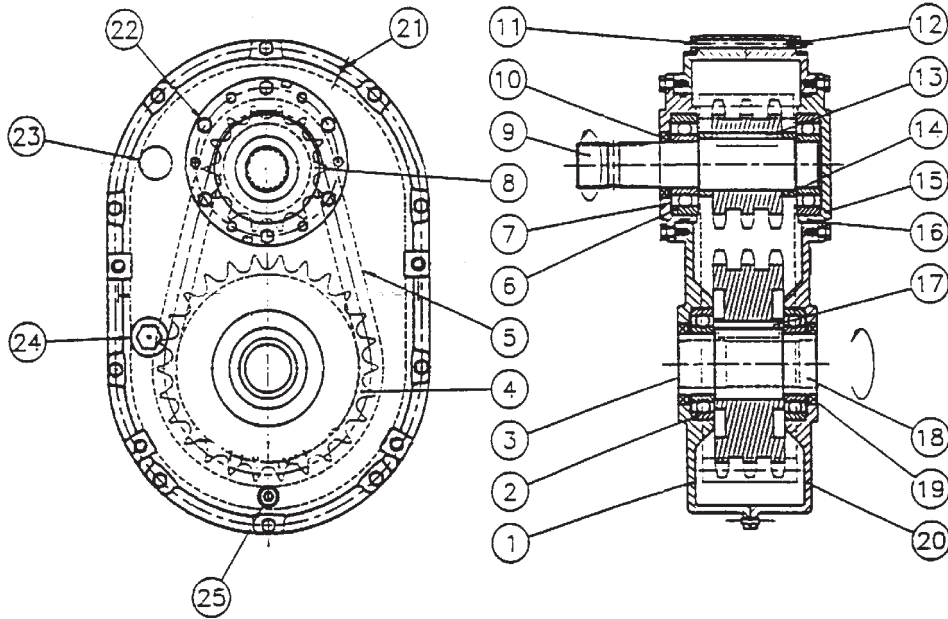
REF.	PART #	DESCRIPTION	QTY
1	8043	Casing	1
2	30208-A	Roller bearing	2
3	8045	Inside circlip 80mm	2
4	8046	Oil seal 40 x 80 x 12mm	2
5	8047	Adjusting washer	1
6	8048	Gear Z18	1
7	8049	Outside circlip 40mm	1
8	30207-A	Roller bearing	1
9	8051	Spacer ring	1
10	8052	Adjusting washer	2
11	8053	Oil seal 35 x 72 x 12mm	1
12	8054	Side shaft (1 1/4" - 19 splines)	1
13	8055	Inside circlip 72mm	1
14	6207-2RS	Ball bearing	1
15	8057	Outside circlip 35mm	1
16	8058	Adjusting washer	1
17	8252	Impeller shaft (1.575" & 1 3/8" - 6 splines)	1
18	8060	Gear Z-18	1
19	8061	Gasket	1
20	8062	Bolt M10 x 14mm	4
21	8063	Cover	1
22	8064	Oil plug	1
23	8065	Oil filler plug	1

GEAR BOX # 9307 (T279)



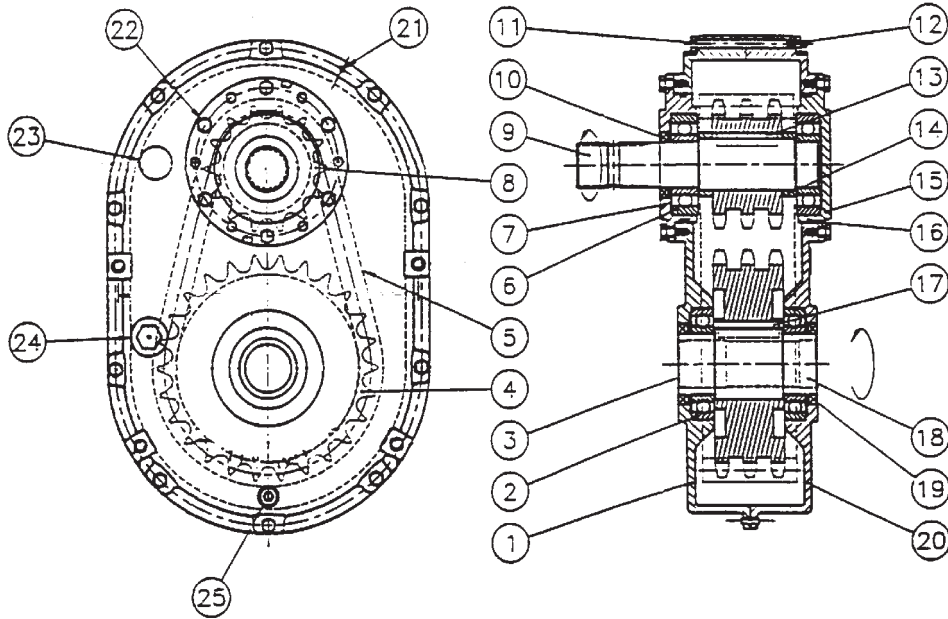
REF.	PART #	DESCRIPTION	QTY
1	6314	Oil seal 52 x 85 x 10	1
2	30209-A	Bearing: cone & cup	2
4	6318	Extension	1
5	6319	Bolt M10 x 22	16
6	32209-A	Bearing: cone & cup	1
7	6321	Shim	2
8	6322	Gear Z21	1
9	6323	Gasket	2
11	6325	Side shaft Z20 (1 3/4" - 20 splines)	1
12	6326	Key B14 x 9 x 40	2
13	9345	Impeller shaft (2" & 1 3/4" - 20 splines)	1
14	6328	Spring washer	1
15	6329	Lock nut M40 x 1.5 H9	1
16	6330	Casing	1
17	6331	Plug 3/8" gas	3
18	6332	Dust excluder 45 x 72 x 8	1
19	6333	External circlip 50 UNI7435	1
20	6334	Gear Z21	1
21	6335	Shim	2
22	30210-A	Bearing: cone & cup	1
24	6338	Cover	1
25	6339	Oil seal 50 x 72 x 8	1

REDUCTION GEAR BOX # 8348



REF.	PART #	DESCRIPTION	QTY
1	9546	Casing with plug	1
2	6212-RS	Bearing 6212	2
3	9547	Seal cover (47 x 7)	1
4	9548	Sprocket 80-3A26	1
5	9549	Chain 80-3 x 36" lg	1
6	6309-RS	Bearing 6309	2
7	9550	Input cover with hole	1
8	9551	Sprocket 80-3A14	1
9	8349	Input shaft 1 3/8"-6 splines	1
10	9553	Oil seal (45x65x8) TC double lips	1
11	300-34490	Bolt 5/16" NC x 4 1/2" lg	10
12	336-34000	Nut 5/16" NC	10
13	9554	Square key 1/2" x 2 1/2"	1
14	9555	Spacer (2 - 2 3/8 - 0.568)	2
15	9556	Input cover w/o hole	1
16	9557	O-ring AS-248	2
17	9558	Square key 5/8" x 2 1/2"	1
18	8350	Output shaft 1 3/8"-6 splines	1
19	9560	Oil seal (60 x80x10) TC double lips	2
20	9561	Casing w/o plug	1
21	9562	Slotted spring pin 3/16" x 3/4"	2
22	300-30220	Bolt 3/16" NC x 3/4" lg	12
23	9563	Air vent 1/2" NPT	1
24	9564	Sight glass 3/4" NPT	1
25	9565	Drain plug 1/2" NPT	1

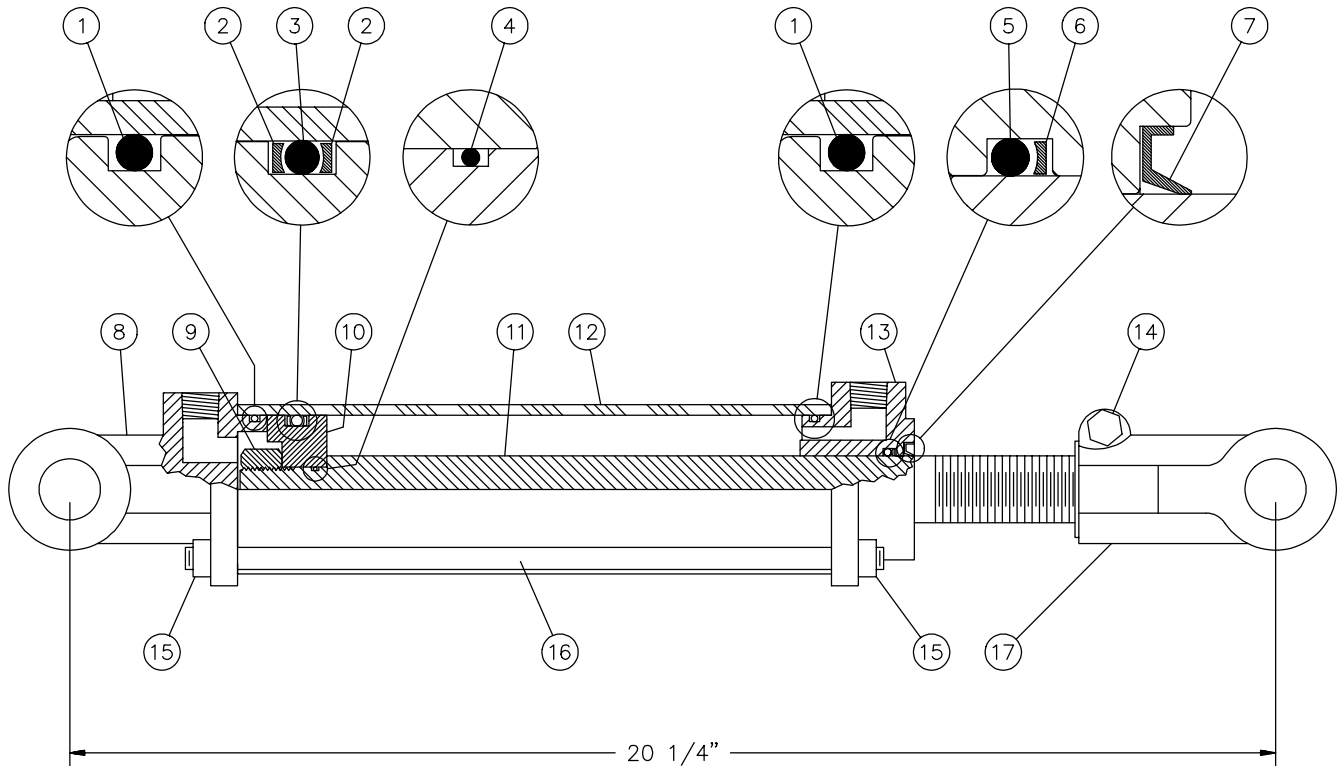
REDUCTION GEAR BOX # 9575



REF.	PART #	DESCRIPTION	QTY
1	9546	Casing with plug	1
2	6212-2RS	Bearing 6212	2
3	9547	Seal cover (47 x 7)	1
4	9548	Sprocket 80-3A26	1
5	9549	Chain 80-3 x 36" lg	1
6	6309-2RS	Bearing 6309	2
7	9550	Input cover with hole	1
8	9551	Sprocket 80-3A14	1
9	9552	Input shaft 1 3/4"-20 splines	1
10	9553	Oil seal (45x65x8) TC double lips	1
11	300-34490	Bolt 5/16" NC x 4 1/2" lg	10
12	336-34000	Nut 5/16" NC	10
13	9554	Square key 1/2" x 2 1/2"	1
14	9555	Spacer (2 - 2 3/8 - 0.568)	2
15	9556	Input cover w/o hole	1
16	9557	O-ring AS-248	2
17	9558	Square key 5/8" x 2 1/2"	1
18	9559	Output shaft 1 3/4"-20 splines	1
19	9560	Oil seal (60 x80x10) TC double lips	2
20	9561	Casing w/o plug	1
21	9562	Slotted spring pin 3/16" x 3/4"	2
22	300-30220	Bolt 3/16" NC x 3/4" lg	12
23	9563	Air vent 1/2" NPT	1
24	9564	Sight glass 3/4" NPT	1
25	9565	Drain plug 1/2" NPT	1

CYLINDER 25TR08

15050



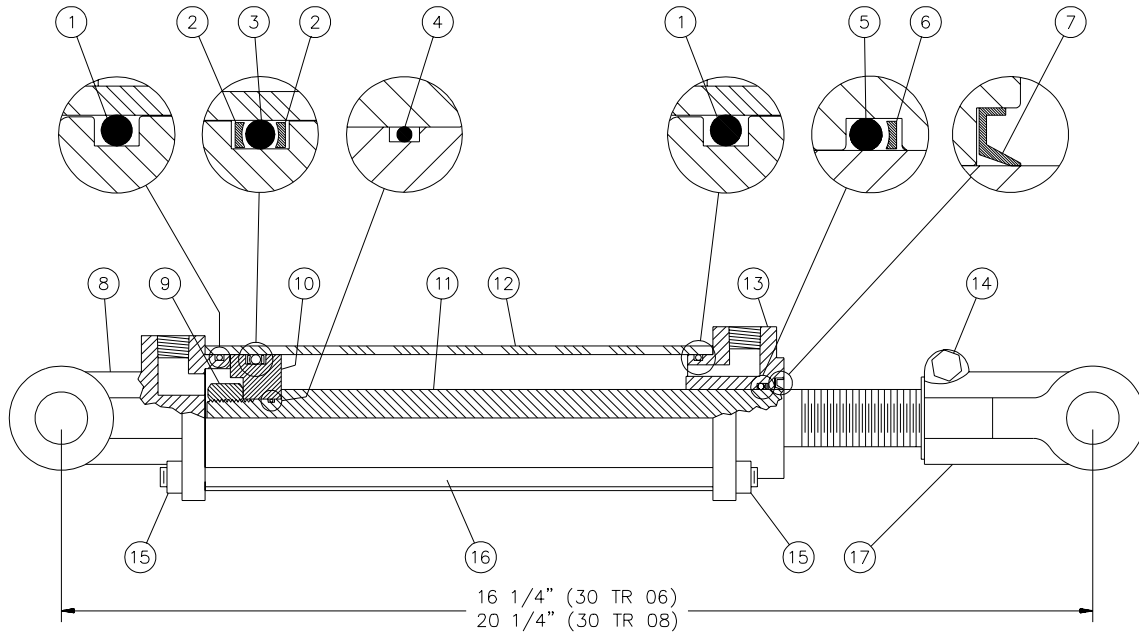
REF.	PART #	DESCRIPTION	QTY
1	See #RK25TR	O-ring 1/8" x 2 1/4" x 2 1/2"	2
2	See #RK25TR	Back-up 2 1/2" o.d. x 3/16 ø	2
3	See #RK25TR	O-ring 3/16" x 2 1/8" x 2 1/2"	1
4	See #RK25TR	O-ring 1/16" x 5/8" x 3/4"	1
5	See #RK25TR	O-ring 1/8" x 1 1/8" x 1 3/8"	1
6	See #RK25TR	Back-up 1 3/8" o.d. x 1/8" ø	1
7	See #RK25TR	Wiper 1 1/8" i.d. x 1 5/8" o.d.	1
8	492401	Yoke (for 2 1/2" tube)	1
9	338-46000	Nut 3/4" NF	1
10	4924-31	Piston 2 1/2" ø	1
11	492028	Piston rod 1 1/8"	1
12	491668	Cylinder body 2 1/2" ø	1
13	492421	Head (for 2 1/2" tube)	1
14	300-36355	Bolt 3/8" NC x 2 1/4" + nut	1
15	336-36000	Nut 3/8" NC	8
16	Std.	Threaded rod 3/8" NC x 12" lg	4
17	458599	Yoke (for 1 1/8" rod)	1
NI*	8183	Pin 1" ø + cotter pin	2
NI*	RK25TR	Repair kit for cylinder 2 1/2" (includes # 1, 2, 3, 4, 5, 6, & 7)	1

*NI = NOT ILLUSTRATED

10

CYLINDERS 30TR06 & 30TR08

170-01641

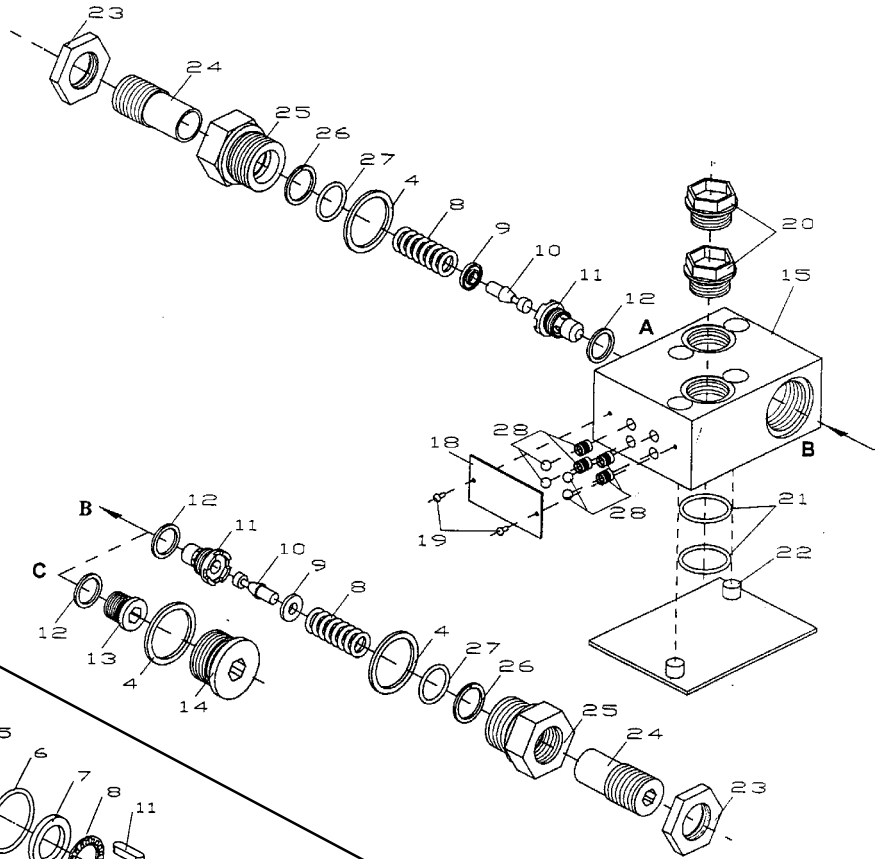


REF.	PART #	DESCRIPTION	QTY	
			30TR06	30TR08
1	voir RK30TR	O-ring	2	2
2	voir RK30TR	Back-up	2	2
3	voir RK30TR	O-ring	1	1
4	voir RK30TR	O-ring	1	1
5	voir RK30TR	O-ring	1	1
6	voir RK30TR	Back-up	1	1
7	voir RK30TR	Wiper	1	1
8	492810	Yoke for tube 3"	1	1
9	129110	Nut 3/4" NF	1	1
10	492520	Piston 3" diameter	1	1
11	492868	Piston rod 1 1/4" diameter	1	-
11	492864	Tige du piston 1 1/4" diameter	-	1
12	491736	Cylinder body 3" diameter	1	-
12	491738	Cylinder body 3" diameter	-	1
13	492812	Head for 3" tube	1	1
14	300-36355	Bolt 3/8" NC x 2 1/4" lg + nut	1	1
15	336-36000	Nut 3/8" NC	8	8
16	492276	Threaded rod 3/8" NC	4	-
16	492278	Threaded rod 3/8" NC	-	4
17	492652	Yoke for 1 1/4" yoke	1	1
NI*	8183	Pin 1" diameter + cotter pin	2	2
NI*	RK30TR	Repair kit for cylinder 3" (includes #1, 2, 3, 4, 5, 6 & 7)	1	1

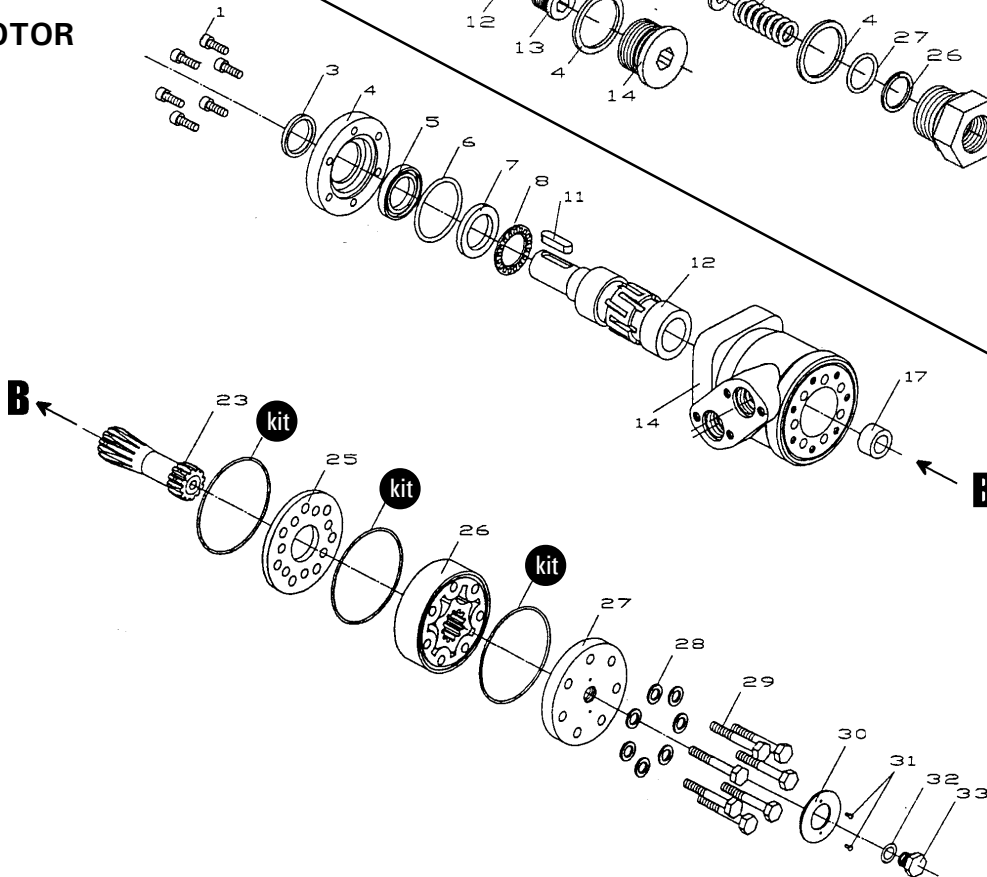
*NI = Not illustrated

HYDRAULIC MOTOR # MLH-250 & MLH-315

CUSHION VALVE



MOTOR






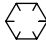



10

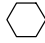




REF.	PART #	DESCRIPTION	QTY
kit	8368	Set of seals.....	1
11	8369	Key for "Orbit" motor.....	1

TORQUE CHART

TORQUE SPECIFICATION TABLE

Thread UNC and UNF		Grade 2 				Grade 5   				Grade 8*   			
Bolt size		Torque				Torque				Torque			
Inches	mm	Pound feet min.	max.	Newton meters min.	max.	Pound feet min.	max.	Newton meters min.	max.	Pound feet min.	max.	Newton meters min.	max.
1/4	6.35	5	6	6.8	8.13	9	11	12.2	14.9	12	15	16.3	30.3
5/16	7.94	10	12	13.6	16.3	17	20.5	23.1	27.8	24	29	32.5	39.3
3/8	9.53	20	23	27.1	31.2	35	42	47.5	57.0	45	54	61.0	73.2
7/16	11.11	30	35	40.7	47.4	54	64	73.2	86.8	70	84	94.9	113.9
1/2	12.70	45	52	61.0	70.5	80	96	108.5	130.2	110	132	149.2	179.0
9/16	14.29	65	75	88.1	101.6	110	132	149.2	179.0	160	192	217.0	260.4
5/8	15.88	95	105	128.7	142.3	150	180	203.4	244.1	220	264	298.3	358.0
3/4	19.05	150	185	203.3	250.7	270	324	366.1	439.3	380	456	515.3	618.3
7/8	22.23	160	200	216.8	271.0	400	480	542.4	650.9	600	720	813.6	976.3
1	25.40	250	300	338.8	406.5	580	696	786.5	943.8	900	1080	1220.4	1464.5
1 1/8	25.58	-	-	-	-	800	880	1084.8	1193.3	1280	1440	1735.7	1952.6
1 1/4	31.75	-	-	-	-	1120	1240	1518.7	1681.4	1820	2000	2467.9	2712.0
1 3/8	34.93	-	-	-	-	1460	1680	1979.8	2278.1	2380	2720	3227.3	3688.3
1 1/2	38.10	-	-	-	-	1940	2200	2630.6	2983.2	3160	3560	4285.0	4827.4

* Thick nuts must be used with grade 8 bolts.

Size of screw	Thread	Pitch (mm)	Grade 4T  				Grade 7T 				Grade 8T  			
			Torque				Torque				Torque			
			Pound feet min.	max.	Newton meters min.	max.	Pound feet min.	max.	Newton meters min.	max.	Pound feet min.	max.	Newton meters min.	max.
M6	UNC	1.00	3.6	5.8	4.9	7.9	5.8	9.4	7.9	12.7	7.2	10	9.8	13.6
M8	UNC	1.25	7.2	14	9.8	19	17	22	23	29.8	20	26	27.1	35.2
M10	UNC	1.5	20	25	27.1	33.9	34	40	46.1	54.2	38	46	51.5	62.3
M12	UNC	1.75	28	34	37.9	46.1	51	59	69.1	79.9	57	66	77.2	89.4
M14	UNC	2.0	49	56	66.4	75.9	81	93	109.8	126	96	109	130.1	147.7
M16	UNC	2.0	67	77	90.8	104.3	116	130	157.2	176.2	129	145	174.8	196.5
M18	UNC	2.0	88	100	119.2	136	150	168	203.3	227.6	175	194	237.1	262.9
M20	UNC	2.5	108	130	146.3	176.2	186	205	252	277.8	213	249	288.6	337.4
M8	UNF	1.0	12	17	16.3	23	19	27	25.7	36.6	22	31	29.8	42
M10	UNF	1.25	20	29	27.1	39.3	35	47	47.4	63.7	40	52	54.2	70.5
M12	UNF	1.25	31	41	42	55.6	56	68	75.9	92.1	62	75	84	101.6
M14	UNF	1.5	52	64	70.5	86.7	90	106	122	143.6	107	124	145	168
M16	UNF	1.5	69	83	93.5	112.5	120	138	162.6	187	140	158	189.7	214.1
M18	UNF	1.5	100	117	136	158.5	177	199	239.8	269.6	202	231	273.7	313
M20	UNF	1.5	132	150	178.9	203.3	206	242	279.1	327.9	246	289	333.3	391.6

Use the above torques when special torque is not given.

NOTE: These values apply to fasteners as received from supplier, dry, or when lubricated with normal engine oil. They do not apply if extreme pressure lubricants are used.

WARRANTY

12

PRONOVOST warrants this product to the initial purchaser for the period of one year from the date of purchase against defects in materials and workmanship.

We will replace or repair defective parts free of charge if they are returned to our plant in St-Tite, Quebec, Canada.

Transportation charges are the responsibility of the customer. This warranty is not transferable.

Hydraulic cylinders and motors are covered by the manufacturer of these items.

All PRONOVOST spare parts purchased are covered by a three (3) month warranty.

This warranty becomes void and nul if the equipment is modified, breaks down as the result of an accident, is not operated according to manufacturer's recommendations, damaged by negligence or if maintenance has not been carried out as specified.

Our obligation is limited to the replacement or repair of the defective part. PRONOVOST accepts no responsibility for direct or indirect consequential damages of any kind.

Ce manuel est aussi disponible en français.
Veuillez téléphoner.



INNOVATION - EXCELLENCE

LES MACHINERIES PRONOVOST INC.

260, route 159,

Saint-Tite, Quebec, Canada, G0X 3H0

Tel.: (418) 365-7551, Fax: (418) 365-7954

www.pronovost.qc.ca