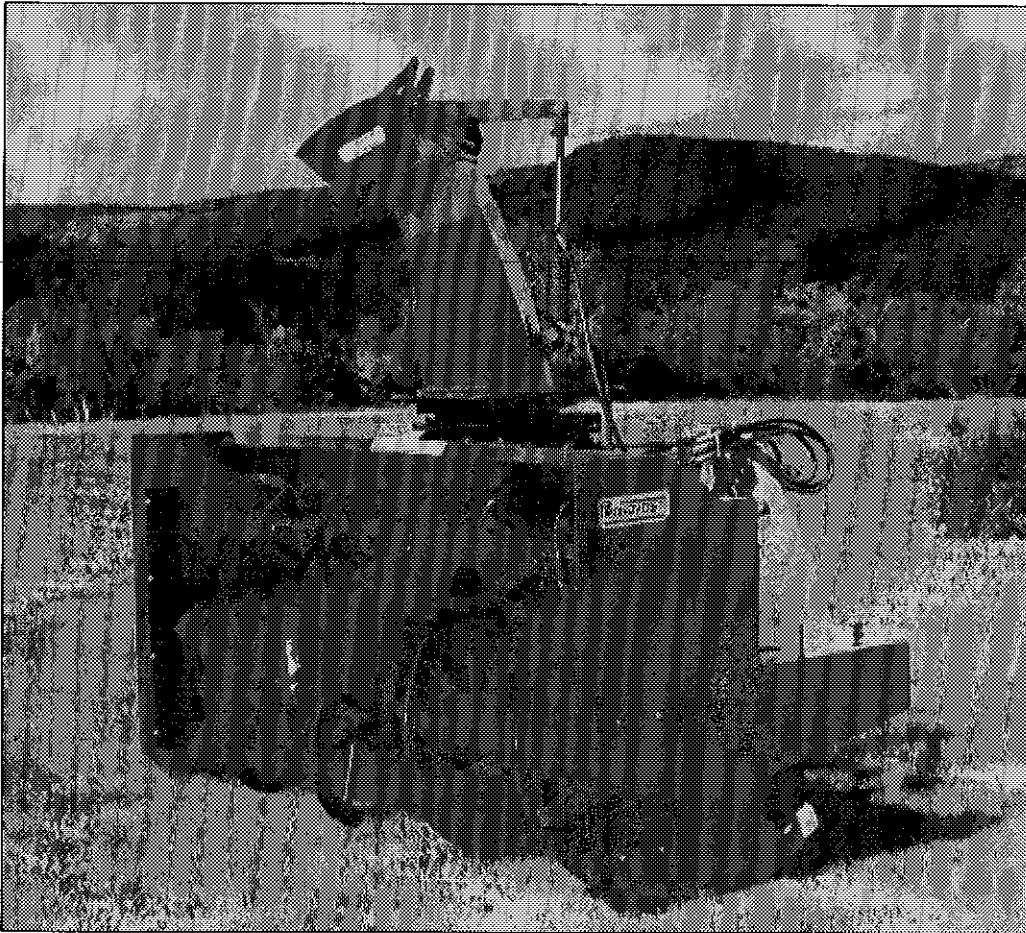


# PRONOVOST

## OWNER'S MANUAL



### *Snowblowers*

### **Models**

**P-992 & P-992TRC**

**P-980 & P-980TRC**

**P-1040TRC**

---

Copyright © Les Machineries Pronovost Inc., 1995

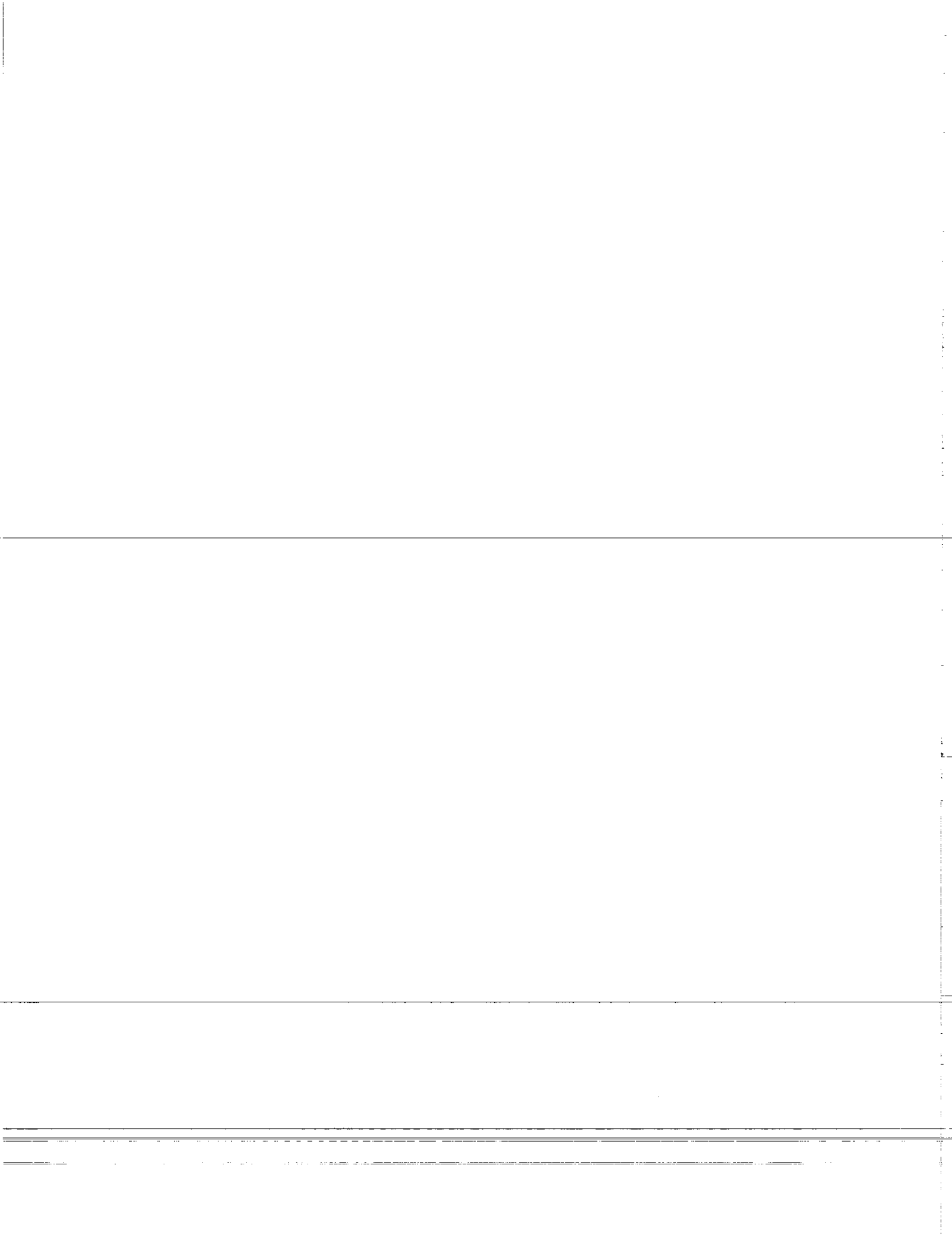
All rights reserved.  
Printed in Canada.

---

---

# TABLE OF CONTENTS

Section	Item	Page
<b>1</b>	<b>Introduction .....</b>	<b>5</b>
<b>2</b>	<b>Safety .....</b>	<b>6</b>
	General Safety .....	6
	Safety in Operation .....	6
	Safety with Maintenance .....	7
	Safety in Transport .....	7
	Safety in Storage .....	7
<b>3</b>	<b>Decals .....</b>	<b>8</b>
	Safety Decals .....	8
	Maintenance Decals .....	10
<b>4</b>	<b>Assembly .....</b>	<b>11</b>
	General assembly .....	11
	Motor on the rotary drum .....	12
	Hydraulic Chute Kit: Motor .....	13
<b>5</b>	<b>Start-up .....</b>	<b>14</b>
	Basic Start-up Procedures .....	14
<b>6</b>	<b>Maintenance .....</b>	<b>15</b>
<b>7</b>	<b>Storage .....</b>	<b>16</b>
<b>8</b>	<b>Trouble Shooting .....</b>	<b>17</b>
<b>9</b>	<b>Specifications .....</b>	<b>19</b>
<b>10</b>	<b>Parts List .....</b>	<b>20</b>
	Snowblower P-992 .....	20
	Snowblower P-992TRC .....	23
	Snowblower P-980 .....	26
	Snowblowers P-980TRC, P-1040TRC .....	29
	Hydraulic Chute Kit: Motor SP-9298 .....	33
	Semi-industrial Chute PSI-92104 .....	34
	Industrial Chute PC-92104 .....	35
	Heavy Duty Kit .....	36
	P.T.O. Shaft 9225-EG .....	37
	P.T.O. Shaft 9500 .....	38
	Gear Box 9307 .....	39
	Cylinder 25TR08 .....	40
	Hydraulic Motor DH 250 & DH 315 .....	41
<b>11</b>	<b>Torque Chart .....</b>	<b>42</b>
<b>12</b>	<b>Warranty .....</b>	<b>43</b>



---

---

# INTRODUCTION

---

1

## CONGRATULATIONS!

Thank you for choosing PRONOVOST. We are confident this equipment will meet your requirements in terms of quality, performance and reliability.

This manual was prepared to assist you in the safe operation of your new Snowblower. It contains important information which will help you achieve excellent returns with your Snowblower for years to come.

Please read this manual completely before operating your Snowblower and keep it for future reference.

Before starting the machine, you or any other person who will be operating the Snowblower must familiarize yourself with the safety recommendations and the operating instructions. Please read carefully and be sure to understand and follow all recommendations and procedures.

In this manual, the right and left sides are identified as shown on Figure 1.

If you require additional information on your Snowblower, please contact your PRONOVOST Dealer.

**NOW** take a moment to enter the model, serial number and the date of purchase of your Snowblower in the space provided.

When ordering parts from your Dealer, please refer to these numbers for a fast and efficient service. Use PRONOVOST parts for replacement.

The model and serial numbers are on the name plate shown on Fig. 1.

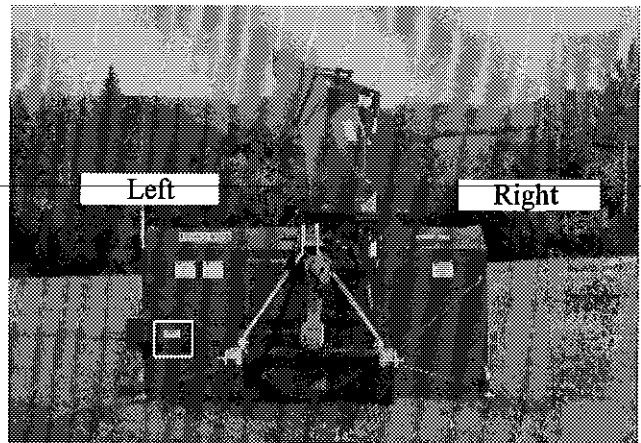


Figure 1

MODEL: \_\_\_\_\_

SERIAL NO: \_\_\_\_\_

DATE OF PURCHASE: \_\_\_\_\_

---

---

# SAFETY

---

## GENERAL SAFETY

2

### WHEN YOU SEE THIS SYMBOL



**ATTENTION!**

**BE ALERT  
YOUR SAFETY IS INVOLVED**

This symbol «SAFETY ALERT» is used in this manual and on the safety decals on the Snowblower. It warns you of the possibility of danger. Carefully read, understand and follow all safety recommendations before operating the Snowblower.

- 1) Careful operation is the best assurance against accidents. Carefully read this manual and follow all recommendations before operating your Snowblower. It is the owner's responsibility to make sure that anyone who will operate the Snowblower will read this manual before operating the equipment.
- 2) Familiarize yourself with all controls and always be ready to stop the Snowblower quickly in case of emergency.
- 3) Never let a child operate the Snowblower.
- 4) Do not modify the Snowblower. Any non authorized modification may affect the efficiency and/or safety of the equipment.
- 5) Never operate the Snowblower with defective parts or if damaged in any way. Have it repaired before operating.
- 6) Make sure all fasteners are in place and properly secured or tightened. Refer to torque chart on page 42.
- 7) Avoid wearing loose fitting clothing when working with the Snowblower. These could get entangled in moving parts of the equipment and cause accidents.
- 8) Prolonged exposure to noise may hamper hearing. Protect yourself by wearing adequate protection devices.
- 9) Hydraulic fluids under pressure can damage your skin. Do not use your hands to locate a leak.
- 10) Before the beginning of the snow season, inspect all areas where the Snowblower will be used and remove any object which may cause an accident and/or damage the equipment.
- 11) Never operate your Snowblower in poor visibility or without proper lighting conditions.

## SAFETY IN OPERATION

- 1) Be sure there are no obstructions around the equipment and that no one stands near the equipment when in operation.
- 2) Do not operate an engine in a confined or non ventilated area.
- 3) Do not perform any adjustments, cleaning, maintenance or repairs with the engine running. The engine must be stopped and the P.T.O. disengaged. Preferably remove the key from the ignition.
- 4) Wear adequate clothing when working in cold or windy conditions.
- 5) Adjust skid shoes for proper ground clearance of scraper blade, especially in rough terrain or soft ground conditions.
- 6) Before operating, make sure the P.T.O. is properly installed and secured.
- 7) Before starting-up the Snowblower, make sure the auger and drum areas are free of ice.
- 8) Put P.T.O. control in neutral position before starting engine.
- 9) Keep hands, feet and clothing away from moving parts of the Snowblower. Stay away from the discharge chute.

---

---

## ***SAFETY (cont'd)***

---

- 10) Before unplugging the chute, always disengage the P.T.O., stop the engine and relieve all hydraulic pressures.
- 11) Do not operate in excessive inclined conditions. Be careful when turning in slopes.
- 12) Never operate your Snowblower with missing guards or without protective devices in place.
- 13) Do not operate your Snowblower near buildings, windows or other vehicles without prior and proper adjustment of the chute deflector.
- 14) Never aim discharge chute towards people or animals. This may cause serious injuries.
- 15) Always reduce operating speed in slippery conditions.
- 16) Be careful when backing-up, make sure you have good visibility.
- 17) Always be on the lookout for objects which may enter the snowblower.
- 18) If undue vibrations are felt, disengage the P.T.O., stop the motor and look for the cause of the vibration. Vibration is usually the indication of a problem.
- 19) At the end of the operation, disengage the P.T.O., lower the Snowblower, put transmission in neutral, apply parking brake, stop engine and remove the key from the ignition.

### ***SAFETY WITH MAINTENANCE***

- 1) Perform the Snowblower maintenance according to recommendations contained in this manual.

- 2) Stop engine and relieve all hydraulic pressures before doing inspection, maintenance or repairs.
- 3) Never perform any work under the Snowblower while it is supported only by the tractor's hydraulic system. It must be completely supported by wooden blocks or other safe means.

**2**

### ***SAFETY IN TRANSPORT***

- 1) On public roads, use proper safety lights and check local regulations.
- 2) Be alert while driving on the road. Never carry passengers.
- 3) Always disengage P.T.O. while moving from one area of work to another.
- 4) It is recommended to use both brake pedals simultaneously for better control.
- 5) The recommended road speed should be such as to maintain full control over steering and braking.
- 6) Be careful while backing up, make sure you have good visibility.

### ***SAFETY IN STORAGE***

- 1) Provide adequate supports to prevent any accidental overturning of the Snowblower.
- 2) Do not let children play in the area where the Snowblower is stored.

# DECALS

## SAFETY DECALS

The safety decals are affixed wherever special safety precautions are indicated. Locate them on the machine and read them carefully. If a decal is damaged, lost or illegible, install a new one. The following photos indicate where each one must be installed.

3



Figure 3

### ⚠ ATTENTION

- 1- FOR SAFE OPERATION, FOLLOW OPERATING INSTRUCTIONS IN OPERATOR'S MANUAL.
- 2- KEEP HANDS, FEET AND CLOTHINGS AWAY FROM POWER DRIVEN PARTS.
- 3- STOP ENGINE BEFORE LEAVING THE EQUIPMENT.
- 4- MACHINE HAS TO BE COMPLETELY STOPPED BEFORE STARTING TO ADJUST OR LUBRICATE.
- 5- KEEP PEOPLE AND PETS AT SAFE DISTANCE FROM MACHINE.
- 6- KEEP ALL GUARDS AND SHIELDS IN PLACE.

---

- 1- POUR UN FONCTIONNEMENT SÉCURITAIRE SUIVRE LES INSTRUCTIONS DANS LE MANUEL D'OPÉRATION.
- 2- GARDER LES MAINS, PIEDS ET VÊTEMENTS ÉLOIGNÉS DES ÉLÉMENTS MOBILES OU ROTATIFS.
- 3- AVANT DE QUITTER LA MACHINE ARRÊTER LE MOTEUR.
- 4- ARRÊTER COMPLÈTEMENT LA MACHINE POUR EFFECTUER L'ENTRETIEN ET L'AJUSTEMENT.
- 5- GARDER LES GENS ET LES ANIMAUX À UNE DISTANCE SÉCURITAIRE.
- 6- GARDER TOUS LES ÉCRANS PROTECTEUR EN PLACE.

PA 93-01

Figure 2  
Decal A

Part no.: A102

### ⚠ DANGER

TO AVOID SERIOUS INJURIES, KEEP CLEAR OF EQUIPMENT WHILE IN OPERATION.

---

POUR ÉVITER DES BLESSURES GRAVES SE TENIR LOIN DE CET ÉQUIPEMENT LORSQU'IL EST EN MARCHÉ.

PD 93-03

Figure 4  
Decal B

Part no.: A101

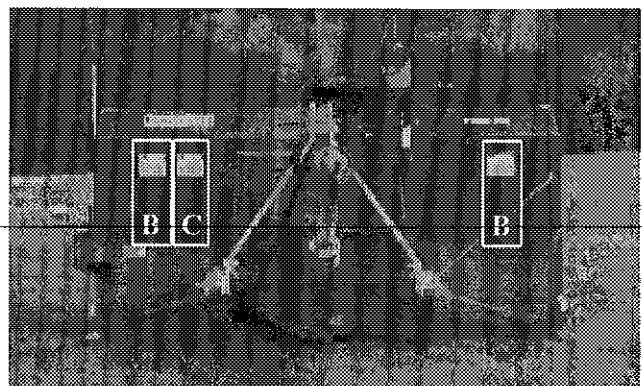


Figure 5



**DECALS (cont'd)**

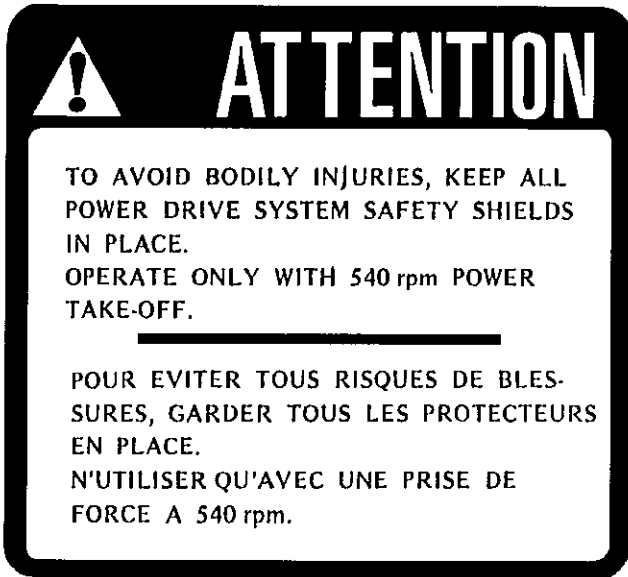


Figure 6  
Decal C

Part no.: A107



Figure 7  
Decal D

Part no.: A103

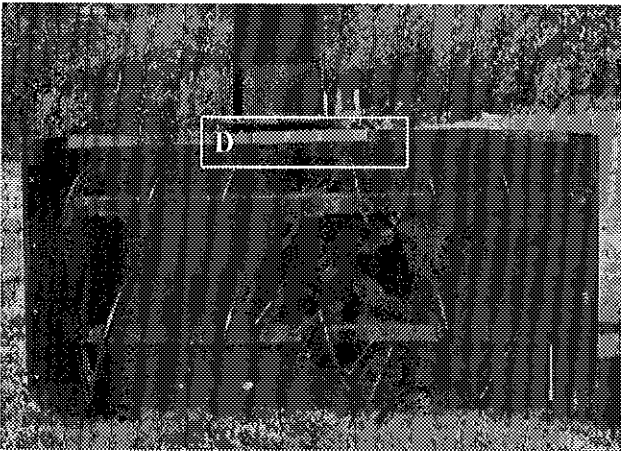


Figure 8

Decal E in Fig. 9 is located directly on the P.T.O. shaft. It is not visible when the safety shield is in place. It must never be visible when you operate the equipment.



Figure 9

Decal E

Part no.: A108

**3**

# DECALS (cont'd)

3

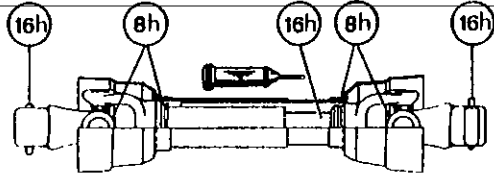


Figure 10  
Decal F

Part no.: A 109

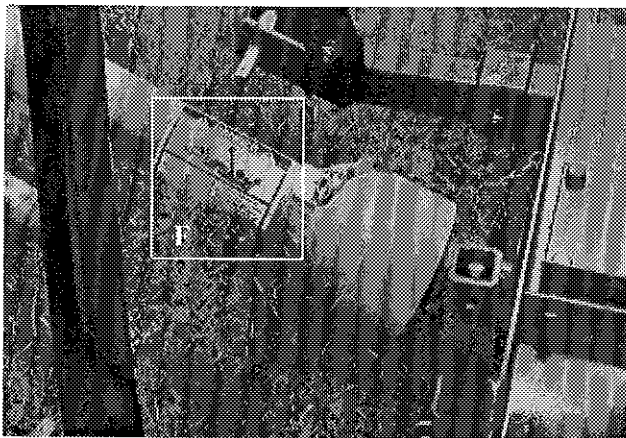


Figure 11

## MAINTENANCE DECALS

The maintenance decals indicate the points requiring lubrication. Refer to maintenance section for more details.

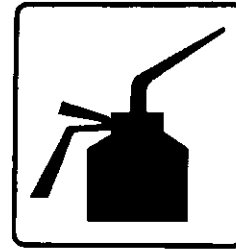


Figure 12

Part no.: A 105



Figure 13

Part no.: A 106



Figure 14  
Decal G

Part no.: A104



Figure 15

---

# ASSEMBLY

---

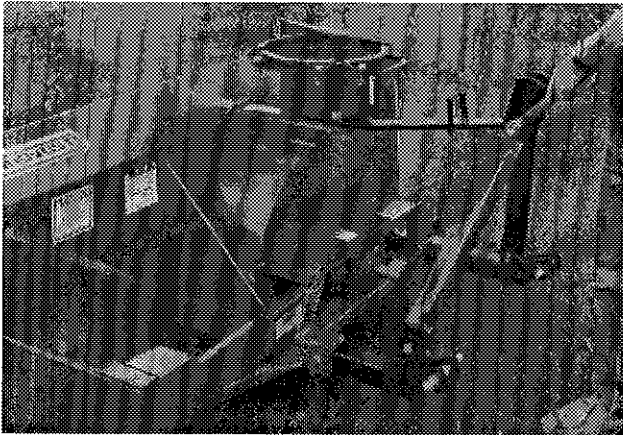


Figure 16

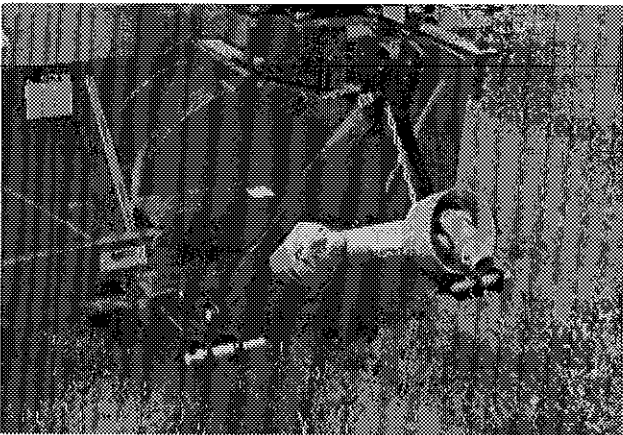


Figure 17

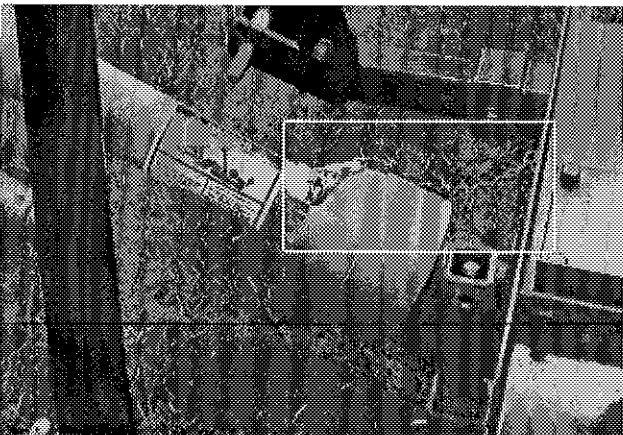


Figure 18

## ASSEMBLY

- 1) The Snowblower is shipped partly assembled.
- 2) Install 3-point system according to the model of your Snowblower. (See section 10 for parts numbers). Use the holes most convenient to the type of tractor used (Fig. 16).
- 3) Install P.T.O. shaft with the shear pin end onto the Snowblower gear box (Fig. 17). Then attach safety shield support chain as shown (Fig. 18). **WARNING:** The telescoping tubes of the drive shaft must never be allowed to bottom out while maintaining a minimum overlap of 6 inches.
- 4) If you install a hydraulic cylinder on the chute deflector, use model 25TR08 cylinder.
- 5) If equipped with a rotating drum, install a hydraulic motor. Refer to page 12 for installation instructions.
- 6) For the installation of the chute rotation mechanism, please refer to page 13.

4

---

---

## ASSEMBLY (cont'd)

---

4

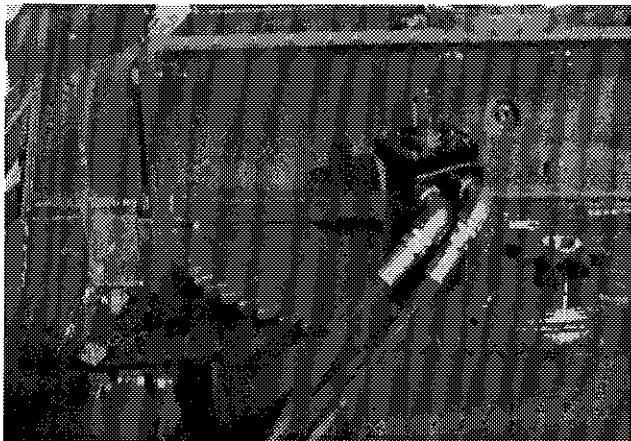


Figure 19



Figure 20

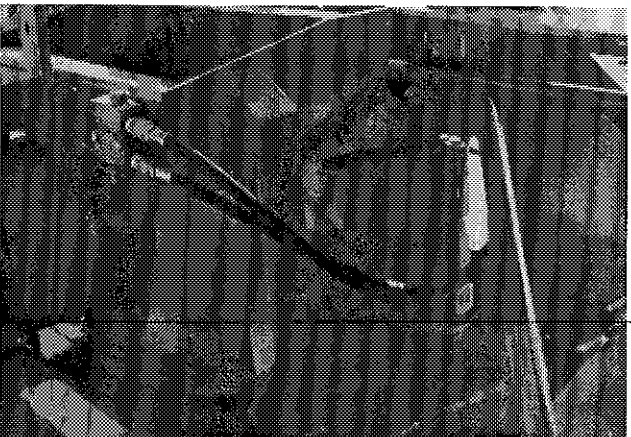


Figure 21

### **MOTOR ON THE ROTARY DRUM**

- 1) Tip the Snowblower forward (gear box facing up) and remove the guard (Fig. 22) protecting the ring gear segment. Remove the elbows.
- 2) Install elbows on the hydraulic motor using teflon tape for a leak proof connection. Orient the elbows as shown (Fig. 19).
- 3) Install hoses to the elbows, again using teflon tape.
- 4) Bolt hydraulic motor on mounting plate provided, install 9 tooth gear. The thickness of the 9 tooth gear is slightly more than the ring gear segment. Make sure it exceeds on both sides of the ring-gear (Fig. 20).
- 5) It is important that the cushion valve furnished be installed. Cushion valve has been pre set in plant at 1300 psi. (Fig. 21).
- 6) Install guard (Fig. 22).

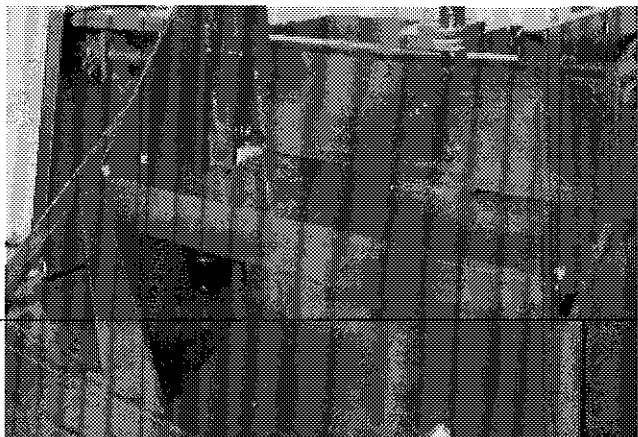


Figure 22

---

---

## ASSEMBLY (cont'd)

---



Figure 23

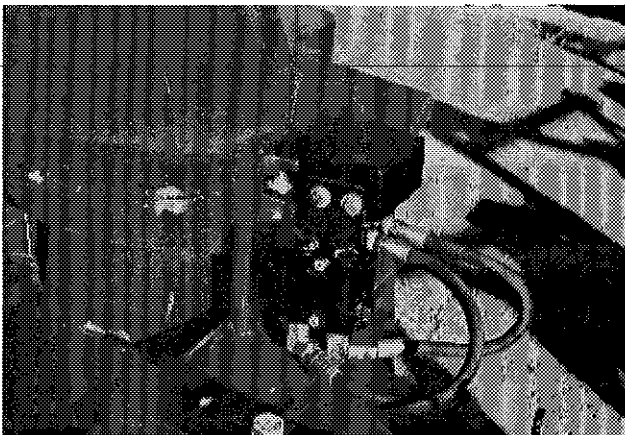


Figure 24

### HYDRAULIC CHUTE ROTATION Motor

- 1) Install U-shaped UHMW piece , place chute on Snowblower and secure with retaining bracket and bolts provided.
- 2) Install motor mounting plate, motor and 9 tooth gear. See page 34 for bolt dimensions (Fig. 23).
- 3) The thickness of the 9 tooth gear is slightly more than the ring-gear. Make sure it exceeds on both sides of the ring gear.
- 4) Using the take-up screws, adjust gear to mesh without bottoming.
- 5) Install guard and cushion valve support. Then install cushion valve and hydraulic hoses as per Fig. 24.
- 6) It is important that the cushion valve furnished with your chute rotation kit be installed. Cushion valve has been pre set in plant at 1300 psi.

4

---

---

# STARTING-UP

---

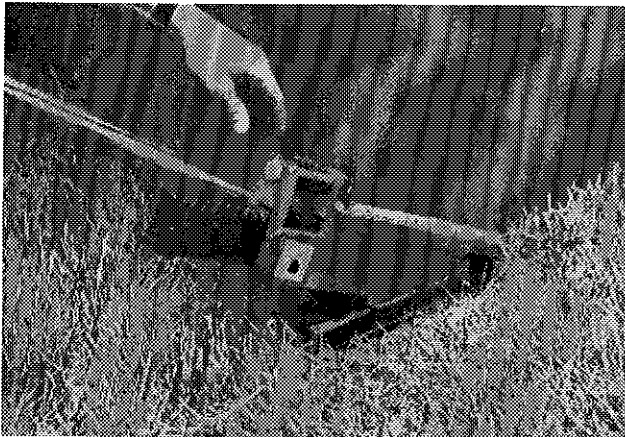


Figure 25

5

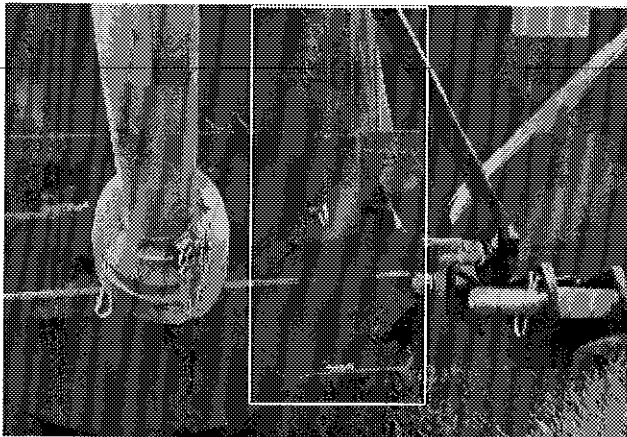


Figure 26

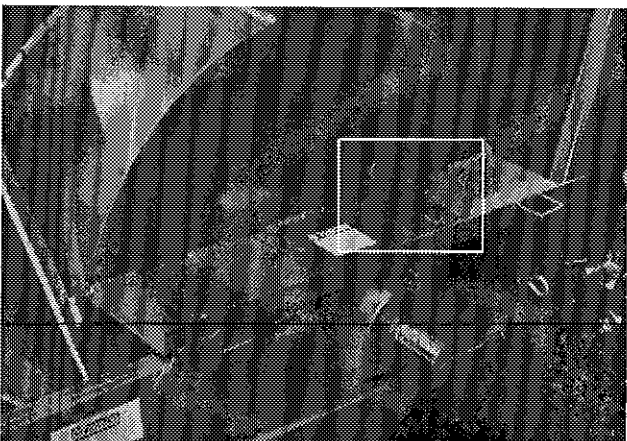


Figure 27

## START-UP PROCEDURES

- 1) Check oil level in gearbox. Use S.A.E. W90 gear box oil.
- 2) Lubricate all points with a good quality multiuse grease.
- 3) Check chain take-up adjustment. A slight tension must be maintained.
- 4) Verify for adequate tightness of all fastening devices. Refer to torque chart on page 42.
- 5) Adjust skid shoes according to ground conditions (Fig. 25).
- 6) Following the installation of the Snowblower on the tractor, **do not forget** to lift the storage support (Fig. 26).
- 7) Make sure of a 540 RPM input to your snowblower.
- 8) Check impeller adjustment. The tip of the blades should be approximately 1/8" to 3/16" from the discharge wall of the drum. If necessary, adjust with the take-up screws provided (Fig. 27).

---

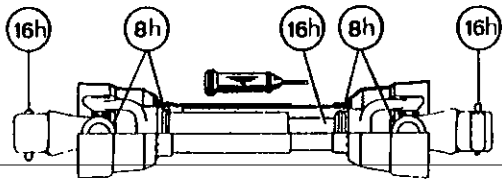
---

# MAINTENANCE

---

---

- 1) Wipe off all grease fittings with a clean cloth before adding grease in order to avoid injecting dirt and sand.
- 2) Repair or replace damaged grease fittings.
- 3) Lubricate all grease fittings every 10 hours of operation.
- 4) Oil drive chain every 8 hours of operation.
- 5) Lubricate P.T.O. shaft as indicated below:
- 7) Check tension of drive chain every 25 hours of operation and adjust if necessary.
- 8) Check for tightness of bearing collars every 50 hours of operation.
- 9) Change gearbox oil once a year. Use gear box oil S.A.E. W90 rated API, class GL-5.
- 10) Check all nuts and bolts once a year. If necessary use torque chart on page 42.



- 6) Check oil level in gear box once a month. If necessary add oil.
- 11) Standard scraper blades are reversible. Reverse when one edge is worn out.
- 12) Always use Grade 5 shear bolts.

---

---

## ***STORAGE***

---

- 1) Store the Snowblower in a cool, dry place.
- 2) Support the Snowblower with wooden blocks.
- 3) Keep all piston rods in the retracted position. This will assure better protection against the elements.
- 4) Clean your Snowblower.
- 5) Thoroughly inspect all parts of the Snowblower. Replace or repair worn or defective parts.
- 6) Touch-up or repaint if necessary.
- 7) Lubricate all points before storage.



# TROUBLESHOOTING

## P.T.O. SHAFT

PROBLEM	POSSIBLE CAUSE	CORRECTION
- Premature wear of U-joints and/or bluish color of cross journals.	- Insufficient lubrication.  - Excessive working angle.	- Follow lubrication recommendations. - Replace defective U-joints. - Make sure the Snowblower inlet face is perpendicular to the ground and if possible readjust 3-point in order to position the Snowblower further away from tractor.
- Gripping or premature wear of telescoping members.	- Too much sliding under load.	- Avoid raising Snowblower while in operation.
	- Tube overlap too-short: minimum recommended is 6". - Insufficient lubrication. - Contaminants (sand, etc.).	- Readjust 3-point in order to position the Snowblower closer to the tractor. - Follow lubrication recommendations. - Replace defective telescopic members.
- Damaged or jammed locking pin or bolt.	- Pin or orifice contaminated by sand, ice, etc. - Telescoping members too long, exerting pressure on locking device.	- Clean and grease.  - Readjust 3-point in order to position the Snowblower further away from tractor or shorten tubes.
- Premature wear of guard tube bearing ring.	- Lack of lubrication. - Wrong installation of guard chain. - Part of the guard in contact with the equipment.	- Follow lubrication instructions. - Adjust chain for non-interference between guard & equipment. - Replace worn or damaged bearing rings.
- Cut or deformed safety guard tubes.	- Tubes in contact with the equipment.	- Eliminate any interference between tubes and equipment or tractor. - Replace damaged tubes.

8

# TROUBLESHOOTING (cont'd)

## SNOWBLOWER

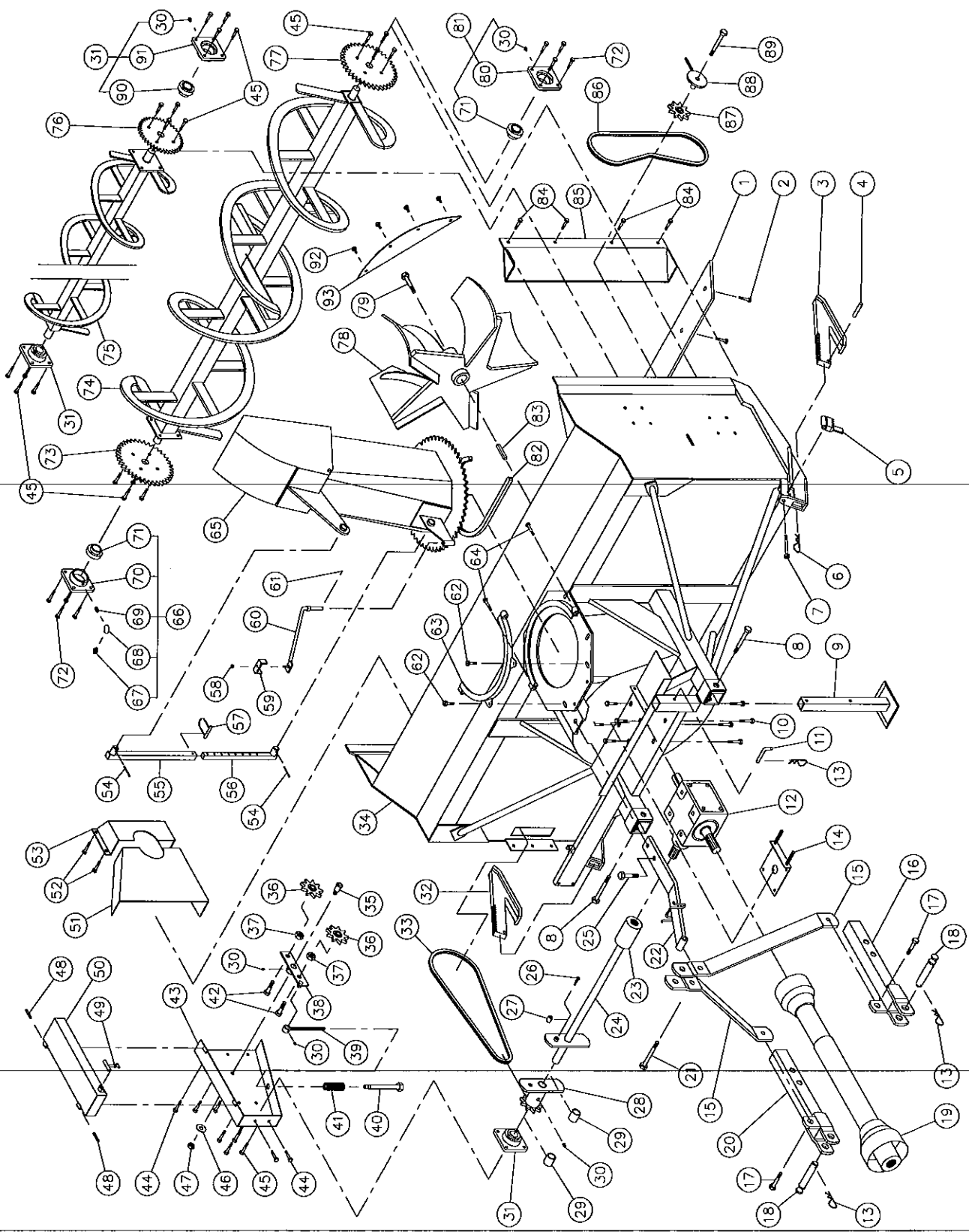
PROBLEM	POSSIBLE CAUSE	CORRECTION
- The snow is not being thrown as far as usual.	<ul style="list-style-type: none"> <li>- Tractor RPM too low.</li> <li>- Gap too wide between impeller blade tip and drum outlet wall.</li> <li>- Insufficient tractor HP.</li> </ul>	<ul style="list-style-type: none"> <li>- Raise P.T.O. speed to a minimum of 540 RPM.</li> <li>- Adjust impeller blades closer to drum outlet (1/8" to 3/16").</li> <li>- Reduce travel speed.</li> </ul>
- Frequent plugging of discharge chute.	<ul style="list-style-type: none"> <li>- Tractor RPM too low.</li> <li>- Tractor RPM reduced too early with snow still in the Snowblower.</li> </ul>	<ul style="list-style-type: none"> <li>- Raise P.T.O. speed to a minimum of 540 RPM.</li> <li>- Make sure the Snowblower is completely empty before reducing RPM, especially on tractors with foot controlled RPM.</li> </ul>
	<ul style="list-style-type: none"> <li>- Slippage of PTO clutch mechanism.</li> <li>- Wet snow condition.</li> </ul>	<ul style="list-style-type: none"> <li>- Repair clutch.</li> <li>- Reduce travel speed.</li> </ul>
- The impeller will not turn.	<ul style="list-style-type: none"> <li>- Shear bolt broken on drive shaft.</li> </ul>	<ul style="list-style-type: none"> <li>- Replace shear bolt.</li> </ul>
- The auger will not turn.	<ul style="list-style-type: none"> <li>- Shear bolt broken on drive shaft.</li> <li>- Shear bolt broken on auger drive shaft.</li> <li>- Broken drive chain.</li> </ul>	<ul style="list-style-type: none"> <li>- Replace shear bolt.</li> <li>- Replace shear bolt.</li> <li>- Fix or replace chain.</li> </ul>
- The rotating drum will not turn.	<ul style="list-style-type: none"> <li>- Ice accumulation.</li> <li>- Wrong hydraulic connections.</li> </ul>	<ul style="list-style-type: none"> <li>- Remove ice.</li> <li>- Check hydraulic connections.</li> </ul>
- The chute will not turn.	<ul style="list-style-type: none"> <li>- Ice accumulation.</li> <li>- Wrong hydraulic connections.</li> </ul>	<ul style="list-style-type: none"> <li>- Remove ice.</li> <li>- Check hydraulic connections.</li> </ul>

# SPECIFICATIONS

Snowblower model		P-992	P-992 TRC	P-980	P-980 TRC	P-1040 TRC
Horse power required min - max		75-125	75-125	100-150	100-150	100-150
Working width	(inches)	92"	92"	98"	98"	104"
	(centimeters)	234	234	249	249	264
Cutting height	(inches)	45"	45"	48½"	48½"	48½"
	(centimeters)	114	114	123	123	123
Impeller diameter	(inches)	30"	30"	34"	34"	34"
	(centimeters)	76	76	86	86	86
Depth of drum	(inches)	15"	15"	15"	15"	15"
	(centimeters)	38.1	38.1	38.1	38.1	38.1
Impeller blades		5	5	6	6	6
Size of impeller shaft	(inches)	2"	2"	2"	2"	2"
	(centimeters)	5.08	5.08	5.08	5.08	5.08
Impeller RPM		540	540	540	540	540
Number of augers		1	1	1	1	1
Main auger diameter	(inches)	23"	23"	26"	26"	26"
	(centimeters)	58	58	66	66	66
Upper auger 13" (33 cm) diameter		Opt.	Opt.	Opt.	Opt.	Opt.
Drive chain - main auger		80	80	100	100	100
Oil bath sealed gear box		Std.	Std.	Std.	Std.	Std.
Choice of chute rotation mechanism	Manual	-	-	-	-	-
	Hydraulic C (cylinder)	-	-	-	-	-
	Hydraulic M (motor)	Available	Available	Available	Available	Available
Number of shear bolt		2	2	2	2	2
Heavy duty 3-point		Std.	Std.	Std.	Std.	Std.
Hitch category		2	2	2	2	2
Balanced impeller		Std.	Std.	Std.	Std.	Std.
Balanced auger		Std.	Std.	Std.	Std.	Std.
Drum rotation mechanism	Hydraulic C (cylinder)	-	-	-	-	-
	Hydraulic M (motor)	-	Std.	-	Std.	Std.
1000 @ 540 RPM reducer		Opt.	Opt.	Opt.	Opt.	Opt.
Scraper blade	Steel - reversible	Std.	Std.	Std.	Std.	Std.
	Carbon steel - not reversible	Opt.	Opt.	Opt.	Opt.	Opt.
Adjustable skid shoes	Steel - reversible	Std.	Std.	Std.	Std.	Std.
	Carbon steel	Opt.	Opt.	Opt.	Opt.	Opt.
Full flight upper auger (industrial)		Opt.	Opt.	Opt.	Opt.	Opt.
Semi-industrial chute		Opt.	Opt.	Opt.	Opt.	Opt.
Industrial chute		Opt.	Opt.	Opt.	Opt.	Opt.
24" (61 cm) chute extension		Opt.	Opt.	Opt.	Opt.	Opt.
48" (122 cm) chute extension		Opt.	Opt.	Opt.	Opt.	Opt.
Choice of deflector adjustment	Rod and tube	Available	Available	Available	Available	Available
	Cylinder	Available	Available	Available	Available	Available
Bearing / ductile iron casing		Std.	Std.	Std.	Std.	Std.
Height - Impeller center	(inches)	19½"	19½"	21½"	21½"	21½"
	(centimeters)	49.5	49.5	54.6	54.6	54.6
Lateral blades		Opt.	Opt.	Opt.	Opt.	Opt.
P.T.O. shaft (standard)		No. 8	No. 8	No. 8	No. 8	No. 8
P.T.O. shaft (optional)		No. 10	No. 10	No. 10	No. 10	No. 10
Weight (approx.)	(lbs)	1843	2012	2003	2172	2232
	(kg)	829	905	901	977	1004

Specifications subject to change without notice.

# SNOWBLOWER P-992



10

# SNOWBLOWER P-992 (cont'd)

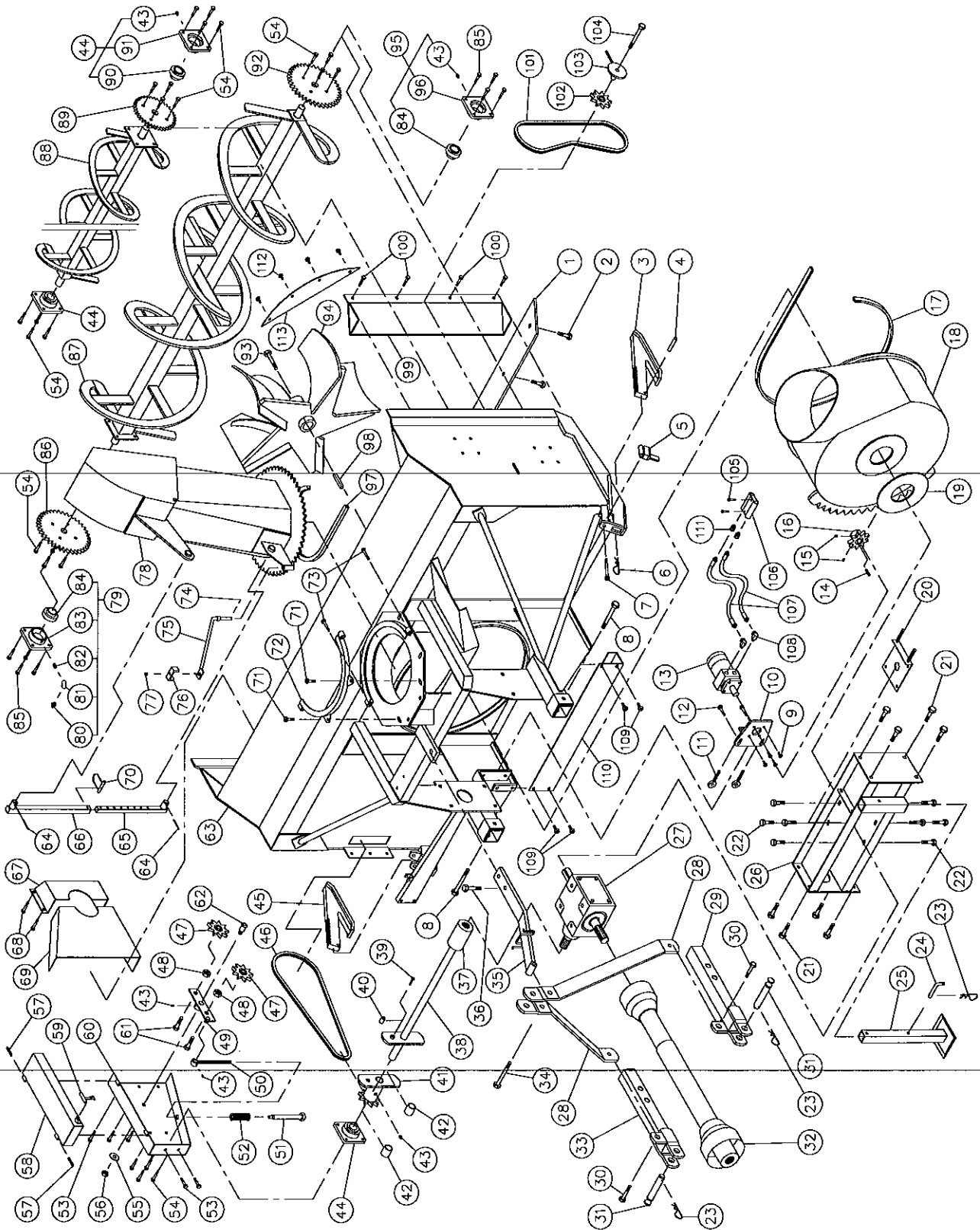
REF.	PART #	DESCRIPTION	QTY
1	140-00811	Reversible scraper blade 3/8" x 4" x 84 1/2" lg .....	1
2	125-0717	Plow bolt 7/16" NC x 1 3/4" lg + nut & lock washer .....	9
3	110-00931	Skid shoe (right side) .....	1
4	Std.	Roll pin 1/4" x 1 1/2" lg .....	2
5	8162	Skid shoes lock .....	2
6	9468	Hitch pin clip (CP-90H) .....	2
7	Std.	Bolt 1/2" NC x 4" lg + locknut .....	2
8	Std.	Bolt 3/4" NC x 5" lg + nylon locknut .....	2
9	8219	Storage support .....	1
10	Std.	Bolt 5/8" NC x 1 1/4" lg + lock washer + 4 flat washers .....	8
11	8220	Storage support pin .....	1
12	9307	Gear box T-279 .....	1
13	Std.	Hitch pin clip 5/32" .....	3
14	9428	Adjustment plate for gear box + 4 nuts 1/2" NC .....	1
15	9443	3-point side bar .....	2
16	110-01591	Right lower hitch .....	1
17	Std.	Bolt 3/4" NC x 2 1/2" lg + nylon locknut .....	2
18	9269	Pin category 2 .....	2
19	9225-EG	P.T.O. shaft .....	1
20	110-00771	Left lower hitch .....	1
21	Std.	Bolt 7/8" NC x 6" lg + nylon locknut.....	1
22	110-00811	Upper hitch .....	1
23	6467	Splined adaptor 1 3/4" - 20 (welded) .....	1
24	9305	Auger drive shaft 34 3/8" lg overall (includes no. 23 and 27) .....	1
25	Std.	Bolt 7/8" NC x 3" lg + nylon locknut.....	1
26	Std.	Bolt 5/16" NC x 2" lg + nylon locknut .....	1
27	9407	Bushing 5/16" i.d. x 3/4" o.d. x 3/4" lg (welded) .....	2
28	9294	Sprocket 80A10 + shearplate .....	1
29	8009	Brass bushing 1 1/4" i.d. x 1 1/2" o.d. x 1 3/16" lg .....	2
30	Std.	Grease fitting 1/4"-28 straight .....	6
31	8011	Bearing 1 1/4" + flange .....	3
32	110-01551	Skid shoe (left side) .....	1
33	ASA80-84	Chain # 80 x 84" lg .....	1
34	- - -	Frame P-992.....	1
35	150-00331	Idler clevis pin.....	1
36	9287	Idler sprocket # 80 .....	2
37	Std.	Nut 7/8" NC .....	2
38	110-01051	Idler .....	1
39	110-01061	Threaded rod for idler adjustment + nut 7/16" NC .....	1
40	110-01071	Threaded tube for idler adjustment .....	1
41	9473	Compression spring .....	1
42	Std.	Bolt 3/4" NC x 2 1/2" lg + nylon locknut .....	2
43	110-01601	Chain guard.....	1
44	Std.	Bolt 7/16" NC x 1" lg + nylon locknut .....	5
45	Std.	Bolt 7/16" NC x 1 1/2" lg + nylon locknut .....	24
46	Std.	Flat washer 5/8" .....	1
47	Std.	Nut 5/8" NC .....	1
48	Std.	Roll pin 5/16" x 2" lg .....	2
49	8125	Rubber fastener .....	1
50	110-00951	Chain guard cover .....	1

**10**

## SNOWBLOWER P-992 (cont'd)

REF.	PART #	DESCRIPTION	QTY
51	130-01381	Inside guard (welded) .....	1
52	Std.	Bolt 3/8" NC x 1" lg + nylon locknut .....	4
53	8925	Inside guard (bolted) .....	1
54	Std.	2 cotter pin 5/32" x 2"lg .....	opt.
55	8146	Chute adjusting tube .....	opt.
56	8145	Chute adjusting rod .....	opt.
57	8112	Lock pin 1/4" .....	opt.
58	Std.	Nylon locknut 5/16" NC .....	1
59	140-00881	Hoses mounting plate .....	1
60	110-01111	Mounting support plate .....	1
61	Std.	Cotter pin 1/8" x 1" lg .....	1
62	Std.	Bolt 1/2" NC x 1 3/4" lg + nylon locknut & flat washer .....	2
63	110-00831	Retaining bracket .....	1
64	Std.	Bolt 7/16" NC x 3" lg + nylon locknut .....	2
65	120-00491	Chute .....	1
66	9277-C	Bearing 1 1/2" + flange + elbow grease fitting .....	1
67	Std.	Grease fitting 1/8"-NPT straight .....	1
68	8266	Elbow 90° 1/8"-NPT .....	1
69	8227	Straight joint 1/8"-NPT .....	1
70	9410-M	Modified flange F208 .....	1
71	9409	Bearing 1 1/2" UC208-24 .....	2
72	Std.	Bolt 1/2" NC x 1 3/4" lg + nylon locknut .....	8
73	9281	Sprocket 80A30 T 1 1/2" ø .....	1
74	9318	Lower auger P-992 (TRC) .....	1
75	9335	Upper auger P-992 (TRC) .....	opt.
76	8144	Sprocket 60A30 T 1 1/4" ø .....	opt.
77	9326	Sprocket 60A38 T 1 1/2" ø .....	opt.
78	110-01611	Impeller 30" ø - 5 blades .....	1
79	8228	Impeller cap screw 5/8" NC x 1 1/2" lg + lock washer .....	1
80	9410	Flange F208 .....	1
81	9277	Bearing 1 1/2" + flange .....	1
82	9359	U-shaped UHMW ± 16 1/2" i.d. .....	1
83	9285	Square key 1/2" x 1/2" x 4" lg .....	1
84	Std.	4 Bolts 7/16" NC x 1 1/4" lg + 4 nylon locknut .....	opt.
85	8135	Chain guard for upper auger .....	opt.
86	ASA60-68	Chain # 60 x 68" lg .....	opt.
87	8186	Idler sprocket #60 (steel) .....	opt.
88	9406	Idler for upper auger (hole 1/2") + 2 nuts 1/2" NC .....	opt.
89	Std.	Bolt 1/2" NC x 3 1/2" lg + nylon locknut & flat washer .....	opt.
90	8165	Bearing 1 1/4" UC207-20 .....	3
91	8166	Flange F207 .....	3
92	Std.	Bolt 7/16" NC x 1" lg + nylon locknut .....	4
93	130-02111	Deflector .....	1

# SNOWBLOWER P-992TRC



# SNOWBLOWER P-992TRC (cont'd)

REF.	PART #	DESCRIPTION	QTY
1	140-00811	Reversible scraper blade 3/8" x 4" x 84 1/2" lg .....	1
2	125-0717	Plow bolt 7/16" NC x 1 3/4" lg + nut & lock washer .....	9
3	110-00931	Skid shoe (right side) .....	1
4	Std.	Roll pin 1/4" x 1 1/2" lg .....	2
5	8162	Skid shoes lock .....	2
6	9468	Hitch pin clip (CP-90H) .....	2
7	Std.	Bolt 1/2" NC x 4" lg + locknut .....	2
8	Std.	Bolt 3/4" NC x 5" lg + nylon locknut .....	2
9	Std.	Bolt 3/8" NC x 1" lg + lock washer .....	4
10	9429	Motor mounting plate .....	1
11	8161	Take-up screws + 2 nuts 3/8" NC .....	2
12	Std.	Bolt 7/16" NC x 2" lg + nylon locknut & flat washer .....	2
13	---	Hydraulic motor .....	opt.
14	---	Key (as motor requirement) .....	opt.
15	Std.	Allen set screw 3/8" NC x 3/8" lg .....	2
16	110-00941	Sprocket (9 teeth) .....	1
17	9435	U-shaped UHMW 3/8" x 7/8" x 97" lg .....	1
18	9436	Rotary drum 30" ø .....	1
19	9432	UHMW flat washer 1/8" x 8 5/8" i.d. x 1 1/2" o.d. ....	1
20	9428	Adjustment plate for gear box + 4 nuts 1/2" NC .....	1
21	Std.	Bolt 3/4" NC x 2" lg + nylon locknut .....	8
22	Std.	Bolt 5/8" NC x 1 1/4" lg + lock washer + 4 flat washers .....	8
23	Std.	Hitch pin clip 5/32" .....	3
24	8220	Storage support pin .....	1
25	8219	Storage support .....	1
26	9437	Gear box support .....	1
27	9307	Gear box T-279 .....	1
28	9444	3-point side bar .....	2
29	110-01591	Right lower hitch .....	1
30	Std.	Bolt 3/4" NC x 2 1/2" lg + nylon locknut .....	2
31	9269	Pin category 2 .....	2
32	9225-EG	P.T.O. shaft .....	1
33	110-00771	Left lower hitch .....	1
34	Std.	Bolt 7/8" NC x 6" lg + nylon locknut .....	1
35	110-00781	Upper hitch .....	1
36	Std.	Bolt 7/8" NC x 3" lg + nylon locknut .....	1
37	6467	Splined adaptor 1 1/4" - 20 (welded) .....	1
38	9305	Auger drive shaft 34 3/8" lg overall (including no. 37 & 40) .....	1
39	Std.	Bolt 5/16" NC x 2" lg + nylon locknut .....	1
40	9407	Bushing 5/16" i.d. x 3/4" o.d. x 3/4" lg (welded) .....	2
41	9294	Sprocket 80A10 + shearplate .....	1
42	8009	Brass bushing 1 1/4" i.d. x 1 1/2" o.d. x 1 3/16" lg .....	2
43	Std.	Grease fitting 1/4"-28 straight .....	6
44	8011	Bearing 1 1/4" + flange .....	3
45	110-01551	Skid shoe (left side) .....	1
46	ASA80-84	Chain #80 x 84" lg .....	1
47	9287	Idler sprocket #80 .....	2
48	Std.	Nut 7/8" NC .....	2
49	110-01051	Idler .....	1
50	110-01061	Threaded rod for idler adjustment + nut 7/16" NC .....	1
51	110-01071	Threaded tube for idler adjustment .....	1
52	9473	Compression spring .....	1
53	Std.	Bolt 7/16" NC x 1" lg + nylon locknut .....	5
54	Std.	Bolt 7/16" NC x 1 1/2" lg + nylon locknut .....	24
55	Std.	Flat washer 5/8" .....	1
56	Std.	Nut 5/8" NC .....	1
57	Std.	Roll pin 5/16" x 2" lg .....	2

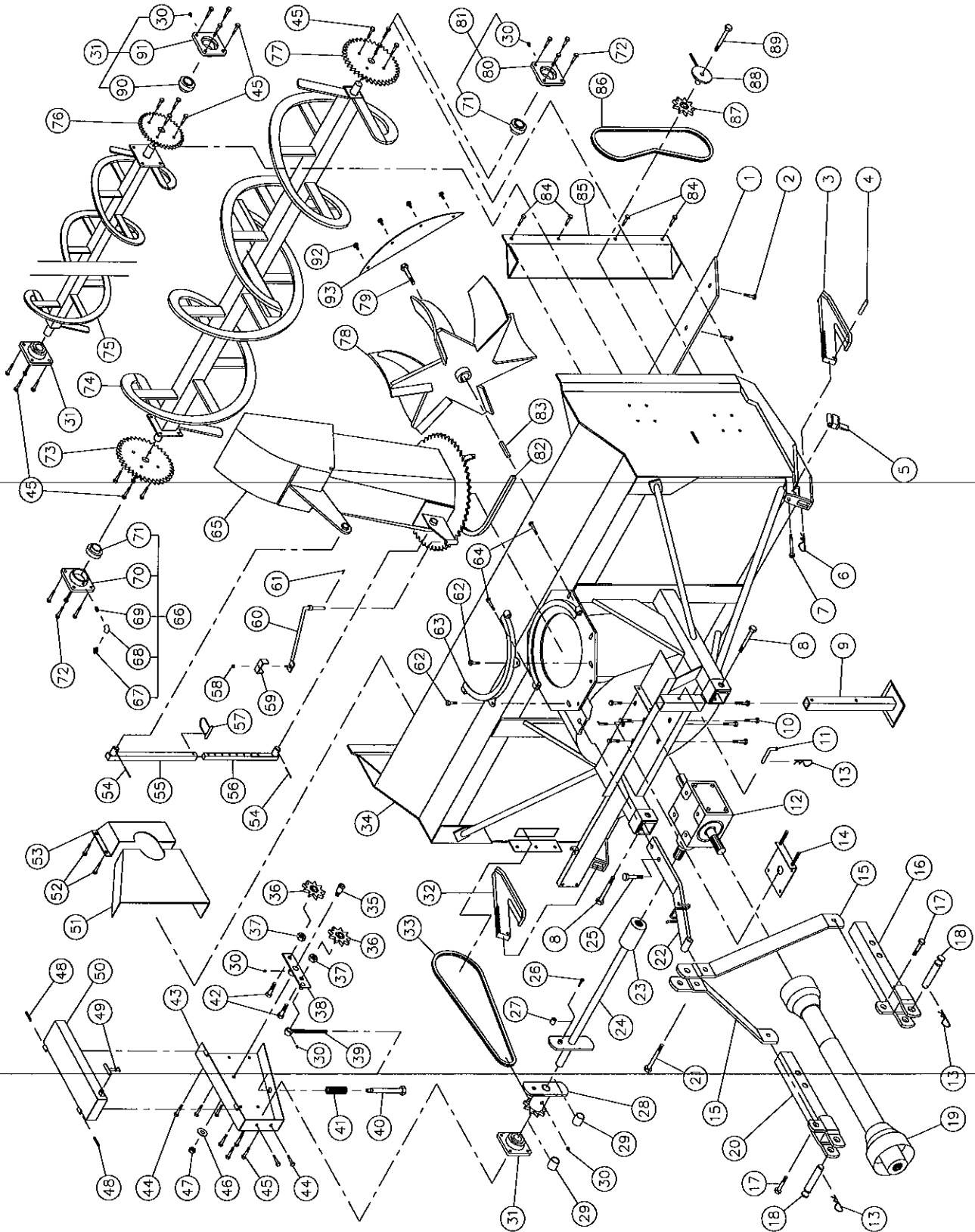


# SNOWBLOWER P-992TRC (cont'd)

REF.	PART #	DESCRIPTION	QTY
58	110-00951	Chain guard cover .....	1
59	8125	Rubber fastener .....	1
60	110-01601	Chain guard .....	1
61	Std.	Bolt 3/4" NC x 2 1/2" lg + nylon locknut .....	2
62	150-00331	Idler clevis pin .....	1
63	- - -	Frame P-992TRC .....	1
64	Std.	2 cotter pin 5/32" x 2" lg .....	opt.
65	8145	Chute adjusting rod .....	opt.
66	8146	Chute adjusting tube .....	opt.
67	8925	Inside guard (bolted) .....	1
68	Std.	Bolt 3/8" NC x 1" lg + nylon locknut .....	4
69	130-01381	Inside guard (welded) .....	1
70	8112	Lock pin 1/4" .....	opt.
71	Std.	Bolt 1/2" NC x 1 3/4" lg + nylon locknut & flat washer .....	2
72	110-00831	Retaining bracket .....	1
73	Std.	Bolt 7/16" NC x 3" lg + nylon locknut .....	2
74	Std.	Cotter pin 1/8" x 1" .....	1
75	110-01111	Mounting support plate .....	1
76	140-00881	Hoses mounting plate .....	1
77	Std.	Nylon locknut 5/16" .....	1
78	120-00491	Chute .....	1
79	9277-C	Bearing 1 1/2" + flange + elbow grease fitting .....	1
80	Std.	Grease fitting 1/8"-NPT straight .....	1
81	8226	Elbow 90° 1/8"-NPT .....	1
82	8227	Straight joint 1/8"-NPT .....	1
83	9410-M	Modified flange F208 .....	1
84	9409	Bearing 1 1/2" UC208-24 .....	2
85	Std.	Bolt 1/2" NC x 1 1/4" lg + nylon locknut .....	8
86	9281	Sprocket 80A30 T 1 1/2" ø .....	1
87	9318	Lower auger P-992 (TRC) .....	1
88	9335	Upper auger P-992 (TRC) .....	opt.
89	8144	Sprocket 60A30 T 1 1/4" ø .....	opt.
90	8165	Bearing 1 1/4" UC207-20 .....	3
91	8166	Flange F207 .....	3
92	9326	Sprocket 60A38 T 1 1/2" ø .....	opt.
93	8228	Impeller cap screw 5/8" NC x 1 1/2" lg +lock washer .....	1
94	110-01611	Impeller 30" ø 5 blades .....	-
95	9277	Bearing 1 1/4" + flange .....	1
96	9410	Flange F208 .....	1
97	9359	U-shaped UHMW ± 16 1/2" i.d. ....	1
98	9285	Square key 1/2" x 1/2" x 4" lg .....	1
99	8135	Chain guard for upper auger .....	opt.
100	Std.	4 Bolts 7/16" NC x 1 1/4" lg + 4 nylon locknut .....	opt.
101	ASA60-68	Chain #60 x 68" lg .....	opt.
102	8186	Idler sprocket #60 .....	opt.
103	9406	Idler for upper auger + 2 nuts 1/2" NC .....	opt.
104	Std.	Bolt 1/2" NC x 3 1/2" lg + nylon locknut & flat washer .....	opt.
105	Std.	Bolt 5/16" NC x 2 3/4" lg + nylon locknut .....	2
106	DXV50	Cushion valve 1/2" .....	1
107	9467	Hose 3/8"-RI x 38" lg + 1 fitting 6U108 + 1 fitting 6U106 .....	2
108	9405 6x8	Fitting - 90° elbow .....	2
109	Std.	Bolt 1/2" NC x 1 1/4" lg + nylon locknut .....	4
110	9450	Guard for ring gear segment .....	1
111	9205 8x8	Fitting 1/2" straight .....	2
112	Std.	Bolt 7/16" NC x 1" lg + nylon locknut .....	4
113	130-02111	Deflector .....	1

10

# SNOWBLOWER P-980



10

# SNOWBLOWER P-980 (cont'd)

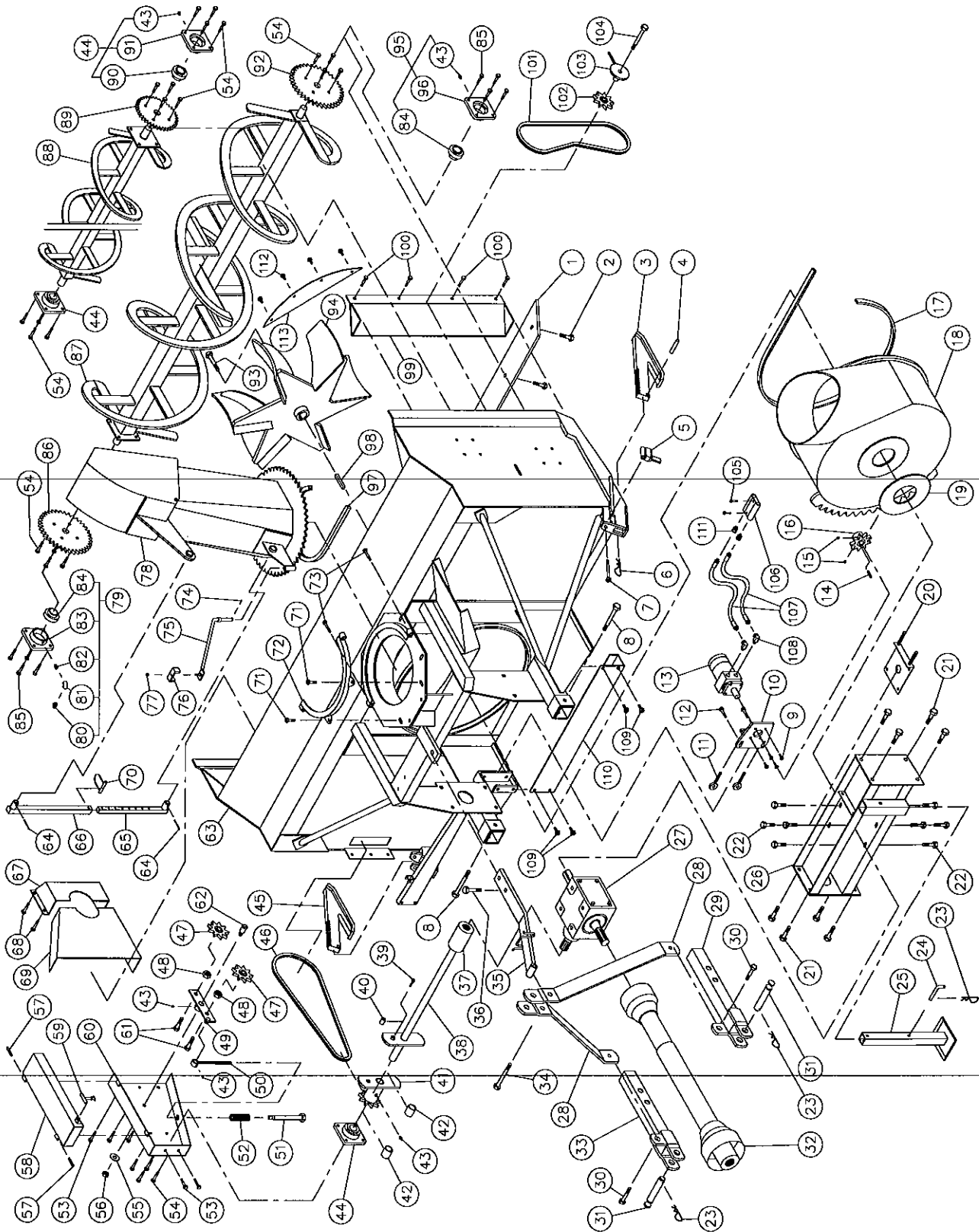
REF.	PART #	DESCRIPTION	QTY
1	140-00831	Reversible scraper blade 3/8" x 4" x 90 1/2" lg.....	1
2	125-0717	Plow bolt 7/16" NC x 1 3/4" lg + nut & lock washer .....	9
3	110-00931	Skid shoe (right side) .....	1
4	Std.	Roll pin 1/4" x 1 1/2" lg .....	2
5	8162	Skid shoes lock .....	2
6	9468	Hitch pin clip (CP-90H) .....	2
7	Std.	Bolt 1/2" NC x 4" lg + locknut.....	2
8	Std.	Bolt 3/4" NC x 5" lg + nylon locknut .....	2
9	8219	Storage support .....	1
10	Std.	Bolt 5/8" NC x 1 1/4" lg + lock washer + 4 flat washers .....	8
11	8220	Storage support pin .....	1
12	9307	Gear box T-279 .....	1
13	Std.	Hitch pin clip 5/32" .....	3
14	9428	Adjustment plate for gear box + 4 nut 1/2" NC.....	1
15	9442	3-point side bar .....	2
16	110-01591	Right lower hitch.....	1
17	Std.	Bolt 3/4" NC x 2 1/2" lg + nylon locknut .....	2
18	9269	Pin category 2 .....	2
19	9225-EG	P.T.O. shaft .....	1
20	110-00771	Left lower hitch .....	1
21	Std.	Bolt 7/8" NC x 6" lg + nylon locknut .....	1
22	110-00801	Upper hitch .....	1
23	6467	Splined adaptor 1 3/4" - 20 (welded) .....	1
24	110-05671	Auger drive shaft 37 3/8" lg overall (including no. 23 & 27) .....	1
25	Std.	Bolt 7/8" NC x 3" lg + nylon locknut .....	1
26	Std.	Bolt 5/16" NC x 2" lg + nylon locknut .....	1
27	9407	Bushing 5/16" .id. x 3/4" e.d. x 3/4" lg (welded) .....	2
28	9469	Sprocket 100A9 + shearplate .....	1
29	8009	Brass bushing 1 1/4" i.d. x 1 1/2" e.d. x 1 3/16" lg .....	2
30	Std.	Grease fitting 1/4"-28 straight .....	6
31	8011	Bearing 1 1/4" + flange .....	3
32	110-01551	Skid shoe (left side).....	1
33	ASA100-87.5	Chain # 100 x 87.5" lg .....	1
34	- - -	Frame P-980 .....	1
35	150-00331	Idler clevis pin .....	1
36	9470	Idler sprocket # 100 .....	2
37	Std.	Nut 7/8" NC .....	2
38	110-01041	Idler .....	1
39	110-01061	Threaded rod for idler adjustment + nut 7/16" NC .....	1
40	110-01071	Threaded tube for idler adjustment .....	1
41	9473	Compression spring .....	1
42	Std.	Bolt 3/4" NC x 2 1/2" lg + nylon locknut.....	2
43	110-01601	Chain guard.....	1
44	Std.	Bolt 7/16" NC x 1" lg + nylon locknut .....	5
45	Std.	Bolt 7/16" NC x 1 1/2" lg + nylon locknut.....	24
46	Std.	Flat washer 5/8" .....	1
47	Std.	Nut 5/8" NC .....	1
48	Std.	Roll pin 5/16" x 2" lg.....	2
49	8125	Rubber fastener .....	1
50	110-00951	Chain guard cover.....	1

**10**

## SNOWBLOWER P-980 (cont'd)

REF.	PART #	DESCRIPTION	QTY
51	130-01371	Inside guard (welded) .....	1
52	Std.	Bolt 3/8" NC x 1" lg + nylon locknut .....	4
53	8925	Inside guard (bolted) .....	1
54	Std.	2 Cotter pin 5/32" x 2"lg .....	opt.
55	8146	Chute adjusting tube .....	opt.
56	8145	Chute adjusting rod .....	opt.
57	8112	Lock pin 1/4" .....	opt.
58	Std.	Nylon locknut 5/16" NC .....	1
59	140-00881	Hoses mounting plate .....	1
60	110-01111	Mounting support plate .....	1
61	Std.	Cotter pin 1/8" x 1" lg .....	1
62	Std.	Bolt 1/2" NC x 1 3/4" lg + nylon locknut & flat washer .....	2
63	110-00831	Retaining bracket .....	1
64	Std.	Bolt 7/16" NC x 3" lg + nylon locknut .....	2
65	120-00491	Chute .....	1
66	9277-C	Bearing 1 1/2" + flange + elbow grease fitting .....	1
67	Std.	Grease fitting 1/8"-NPT straight .....	1
68	8226	Elbow 90° 1/8"-NPT .....	1
69	8227	Straight joint 1/8"-NPT .....	1
70	9410-M	Modified flange F208 .....	1
71	9409	Bearing 1 1/2" UC208-24 .....	2
72	Std.	Bolt 1/2" NC x 1 3/4" lg + nylon locknut .....	8
73	9471	Sprocket 100A24 T 1 1/2" ø .....	1
74	9315	Lower auger P-980 (TRC) .....	1
75	9330	Upper auger P-980 (TRC) .....	opt.
76	8144	Sprocket 60A30 T 1 1/4" ø .....	opt.
77	9326	Sprocket 60A38 T 1 1/2" ø .....	opt.
78	110-01621	Impeller 34" ø - 15" depth - 6 blades .....	1
79	8228	Impeller cap screw 5/8" NC x 1 1/2" lg + lock washer .....	1
80	9410	Flange F208 .....	1
81	9277	Bearing 1 1/4" + flange .....	1
82	9359	U-shaped UHMW ± 16 1/2" i.d. .....	1
83	9285	Square key 1/2" x 1/2" x 4" lg .....	1
84	Std.	4 Bolts 7/16" NC x 1 1/4" lg + 4 nylon locknut .....	opt.
85	8135	Chain guard for upper auger .....	opt.
86	ASA60-69	Chain # 60 x 69" lg .....	opt.
87	8186	Idler sprocket #60 .....	opt.
88	9406	Idler for upper auger + 2 nuts 1/2" NC .....	opt.
89	Std.	Bolt 1/2" NC x 3 1/2" lg + nylon locknut & flat washer .....	opt.
90	8165	Bearing 1 1/4" UC207-20 .....	3
91	8166	Flange F207 .....	3
92	Std.	Bolt 7/16" NC x 1" lg + nylon locknut .....	4
93	130-02121	Deflector .....	1

# SNOWBLOWERS P-980TRC P-1040TRC



# SNOWBLOWERS P-980TRC P-1040TRC (cont'd)

REF.	PART #	DESCRIPTION	QTY	
			P-980TRC	P-1040TRC
1	140-00831	Reversible scraper blade 3/8" x 4" x 90 1/2" lg .....	1	-
1	140-00851	Reversible scraper blade 3/8" x 4" x 96 1/2" lg .....	-	1
2	125-0717	Plow bolt 7/16" NC x 1 3/4" lg + nut & lock washer .....	9	10
3	110-00931	Skid shoe (right side) .....	1	1
4	Std.	Roll pin 1/4" x 1 1/2" lg .....	2	2
5	8162	Skid shoes lock .....	2	2
6	9468	Hitch pin clip (CP-90H) .....	2	2
7	Std.	Bolt 1/2" NC x 4" lg + lock nut .....	2	2
8	Std.	Bolt 3/4" NC x 5" lg + nylon locknut .....	2	2
9	Std.	Bolt 3/8" NC x 1" lg + lock washer .....	4	4
10	9429	Motor mounting plate .....	1	1
11	8161	Take-up screws + 2 nuts 3/8" NC .....	2	2
12	Std.	Bolt 7/16" NC x 2" lg + nylon locknut & flat washer .....	2	2
13	---	Hydraulic motor .....	opt.	opt.
14	---	Key (as motor requirement) .....	opt.	opt.
15	Std.	Allen set screw 3/8" x 3/8" lg .....	2	2
16	110-00941	Sprocket (9 teeth) .....	1	1
17	9430	U-shaped UHMW 3/8" x 7/8" x 109 1/4" lg .....	1	1
18	9431	Rotary drum 34" ø .....	1	1
19	9432	UHMW flat washer 1/8" x 8 5/8" i.d. x 1 1/2" o.d. ....	1	1
20	9428	Adjustment plate for gear box + 4 nuts 1/2" NC .....	1	1
21	Std.	Bolt 3/4" NC x 2" lg + nylon locknut .....	8	8
22	Std.	Bolt 5/8" NC x 1 1/4" lg + lock washer + 4 flat washers .....	8	8
23	Std.	Hitch pin clip 5/32" .....	3	3
24	8220	Storage support pin .....	1	1
25	8219	Storage support .....	1	1
26	9433	Gear box support .....	1	1
27	9307	Gear box T-279 .....	1	1
28	9445	3-point side bar .....	2	2
29	110-01591	Right lower hitch .....	1	1
30	Std.	Bolt 3/4" NC x 2 1/2" lg + nylon locknut .....	2	2
31	9269	Pin category 2 .....	2	2
32	9225-EG	P.T.O. shaft .....	1	1
33	110-00771	Left lower hitch .....	1	1
34	Std.	Bolt 7/8" NC x 6" lg + nylon locknut .....	1	1
35	110-00791	Upper hitch .....	1	1
36	Std.	Bolt 7/8" NC x 3" lg + nylon locknut .....	1	1
37	6467	Splined adaptor 1 3/4" - 20 (welded) .....	1	1
38	110-05671	Auger drive shaft 37 3/8" lg overall (including no. 37 & 40) .....	1	-
38	110-05681	Auger drive shaft 40 3/8" lg overall (including no. 37 & 40) .....	-	1
39	Std.	Bolt 5/16" NC x 2" lg + nylon locknut .....	1	1
40	9407	Bushing 5/16" i.d. x 3/4" o.d. x 3/4" lg (welded) .....	2	2
41	9469	Sprocket 100A9 + shearplate .....	1	1
42	8009	Brass bushing 1 1/4" i.d. x 1 1/2" o.d. x 1 3/16" lg .....	2	2
43	Std.	Grease fitting 1/4"-28 straight .....	6	6
44	8011	Bearing 1 1/4" + flange .....	3	3
45	110-01551	Skid shoe (left side) .....	1	1
46	ASA100-87.5	Chain #100 x 87.5" lg .....	1	1
47	9470	Idler sprocket #100 .....	2	2
48	Std.	Nut 7/8" NC .....	2	2
49	110-01041	Idler .....	1	1
50	110-01061	Threaded rod for idler adjustment + nut 7/16" NC .....	1	1

# SNOWBLOWERS P-980TRC P-1040TRC (cont'd)

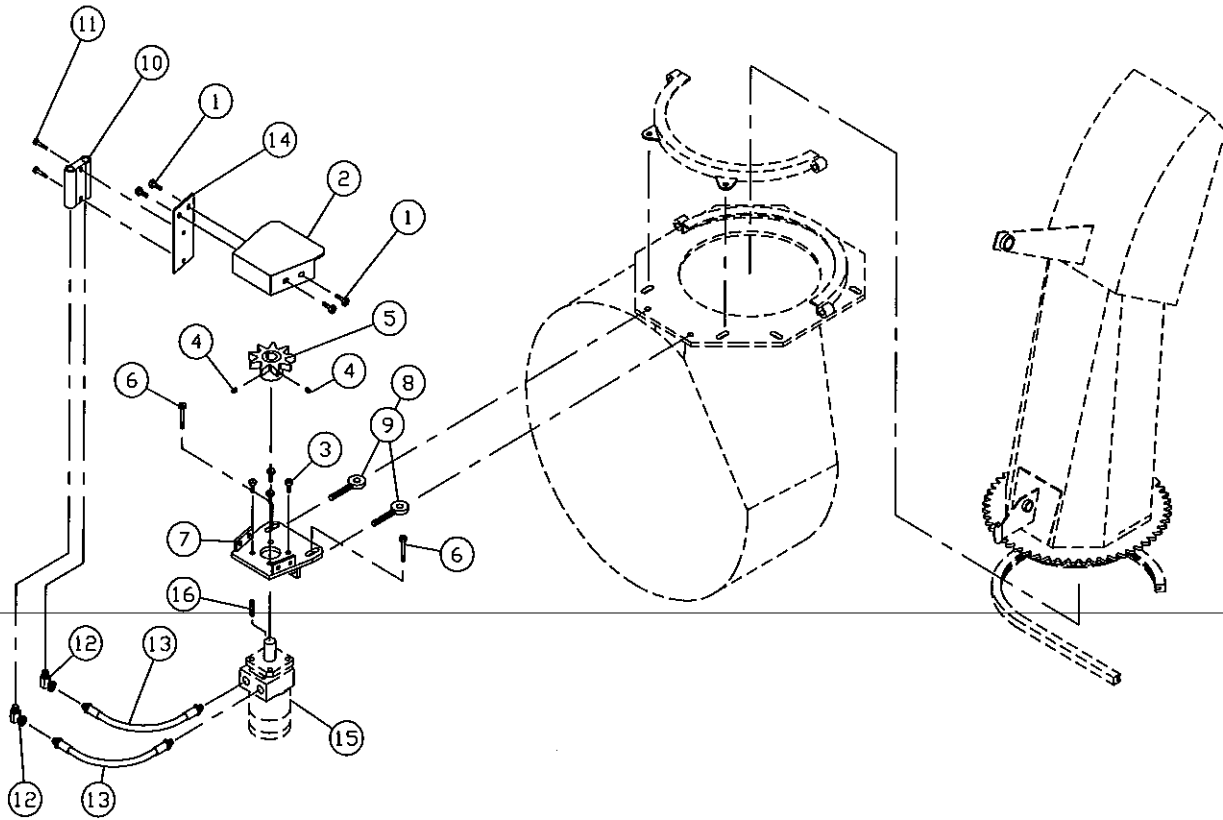
REF.	PART #	DESCRIPTION	QTY	
			P-980TRC	P-1040TRC
51	110-01071	Threaded tube for idler adjustment .....	1	1
52	9473	Compression spring .....	1	1
53	Std.	Bolt 7/16" NC x 1" lg + nylon locknut .....	5	5
54	Std.	Bolt 7/16" NC x 1 1/2" lg + nylon locknut .....	24	24
55	Std.	Flat washer 5/8" .....	1	1
56	Std.	Nut 5/8" NC .....	1	1
57	Std.	Roll pin 5/16" x 2" lg .....	2	2
58	110-00951	Chain guard cover .....	1	1
59	8125	Rubber fastener .....	1	1
60	110-01601	Chain guard .....	1	1
61	Std.	Bolt 3/4" NC x 2 1/2" lg + nylon locknut .....	2	2
62	150-00331	Idler clevis pin .....	1	1
63	- - -	Frame P-980TRC .....	1	-
63	- - -	Frame P-1040TRC .....	-	1
64	Std.	2 cotter pin 5/32" x 2" lg .....	opt.	opt.
65	8145	Chute adjusting rod .....	opt.	opt.
66	8146	Chute adjusting tube .....	opt.	opt.
67	8925	Inside guard (bolted) .....	1	1
68	Std.	Bolt 3/8" NC x 1" + nylon locknut .....	4	4
69	130-01381	Inside guard (welded) .....	1	1
70	8112	Lock pin 1/4" .....	opt.	opt.
71	Std.	Bolt 1/2" NC x 1 3/4" lg + nylon locknut & flat washer .....	2	2
72	110-00831	Retaining bracket .....	1	1
73	Std.	Bolt 7/16" NC x 3" lg + nylon locknut .....	2	2
74	Std.	Cotter pin 1/8" x 1" .....	1	1
75	110-01111	Mounting support plate .....	1	1
76	140-00881	Hoses mounting plate .....	1	1
77	Std.	Nylon locknut 5/16" .....	1	1
78	120-00491	Chute .....	1	1
79	9277-C	Bearing 1 1/2" + flange + elbow grease fitting .....	1	1
80	Std.	Grease fitting 1/8"-NPT straight .....	1	1
81	8226	Elbow 90° 1/8"-NPT .....	1	1
82	8227	Straight joint 1/8"-NPT .....	1	1
83	9410-M	Modified flange F208 .....	1	1
84	9409	Bearing 1 1/2" UC208-24 .....	2	2
85	Std.	Bolt 1/2" NC x 1 3/4" lg + nylon locknut .....	8	8
86	9471	Sprocket 100A24 T 1 1/2" ø .....	1	1
87	9315	Lower auger P-980 (TRC) .....	1	-
87	9254	Lower auger P-1040 (TRC) .....	-	1
88	9330	Upper auger P-980 (TRC) .....	opt.	-
88	9331	Upper auger P-1040 (TRC) .....	-	opt.
89	8144	Sprocket 60A30 T 1 1/4" ø .....	opt.	opt.
90	8165	Bearing 1 1/4" UC207-20 .....	3	3
91	8166	Flange F207 .....	3	3
92	9326	Sprocket 60A38 T 1 1/2" ø .....	opt.	opt.
93	8228	Impeller cap screw 5/8" NC x 1 1/2" lg + lock washer .....	1	1
94	110-01621	Impeller 34" ø 6 blades .....	-	-
95	9277	Bearing 1 1/2" + flange .....	1	1
96	9410	Flange F208 .....	1	1
97	9359	U-shaped UHMW ± 16 1/2" i.d. .....	1	1
98	9285	Square key 1/2" x 1/2" x 4" lg .....	1	1

# SNOWBLOWERS P-980TRC P-1040TRC (cont'd)

REF.	PART #	DESCRIPTION	QTY	
			P-980TRC	P-1040TRC
99	8135	Chain guard for upper auger .....	opt.	opt.
100	Std.	4 Bolts 7/16" NC x 1 1/4" lg + 4 nylon locknuts .....	opt.	opt.
101	ASA60-69	Chain #60 x 69" lg .....	opt.	opt.
102	8186	Idler sprocket #60 .....	opt.	opt.
103	9406	Idler for upper auger chain (hole 1/2") + 2 nuts 1/2" NC .....	opt.	opt.
104	Std.	Bolt 1/2" NC x 3 1/2" lg + nylon locknut & flat washer .....	opt.	opt.
105	Std.	Bolt 5/16" NC x 2 3/4" lg + nylon locknut .....	2	2
106	DXV50	Cushion valve 1/2" .....	1	1
107	9467	Hose 3/8"-RI x 38" lg + 1 fitting 6U108 + 1 fitting 6U106 .....	2	2
108	9405 6x8	Fitting - 90° elbow .....	2	2
109	Std.	Bolt 1/2" NC x 1 1/4" lg + nylon locknut .....	4	4
110	9450	Guard for ring gear segment .....	1	1
111	9205 8x8	Fitting 1/2" straight .....	2	2
112	Std.	Bolt 7/16" NC x 1" lg + nylon locknut .....	4	4
113	130-02121	Deflector .....	1	1



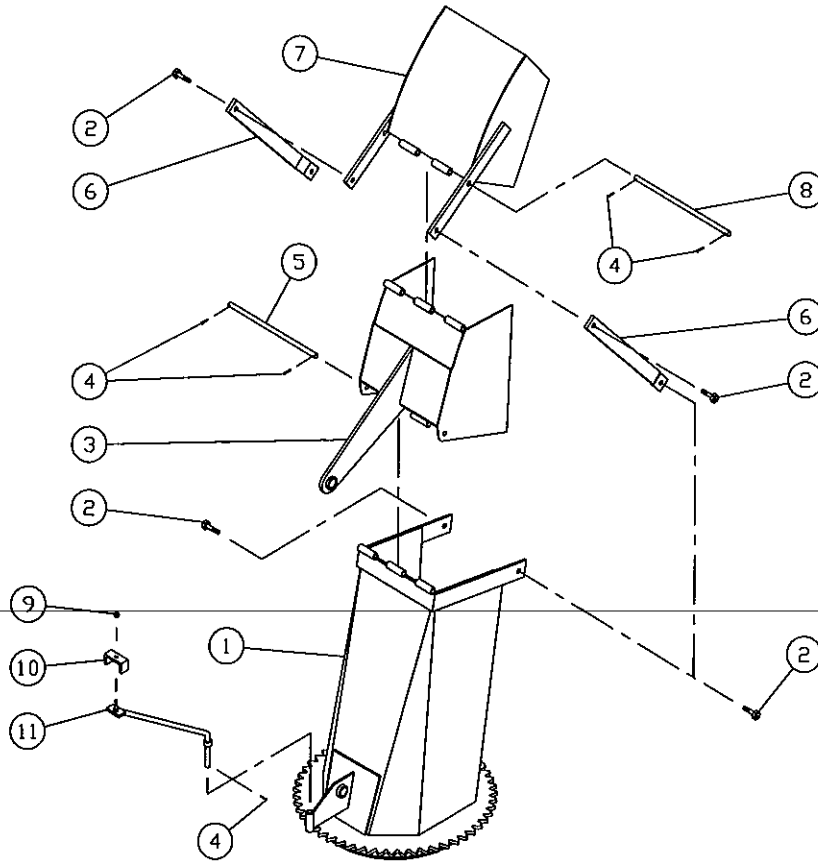
# HYDRAULIC CHUTE KIT Motor SP-9204



REF.	PART #	DESCRIPTION	QTY
1	Std.	Bolt 3/8" NC x 3/4" lg + lock washer & 2 flat washers .....	4
2	8158	Guard .....	1
3	Std.	Bolt 3/8" NC x 1" lg + lock washer .....	4
4	Std.	Allen set screw 3/8" NC x 3/8" lg .....	2
5	8159	Sprocket (9 teeth) .....	1
6	Std.	Bolt 7/16" NC x 2" lg + nylon lock nut & flat washer .....	2
7	8160	Motor mounting plate .....	1
8	Std.	Nut 3/8" NC .....	4
9	8161	Take-up screws .....	2
10	DXV50	Cushion valve .....	1
11	Std.	Bolt 5/16" NC x 2 1/2" lg + nylon locknut .....	2
12	9405 8x8	Fitting -90° .....	2
13	Std.	Hose 3/8" x 16" lg + 2 fittings 6U108 .....	2
14	9472	Cushion valve mounting plate .....	1
15	---	Hydraulic motor (DH250 or DH315) .....	opt.
16	---	Key (as motor requirement) .....	opt.

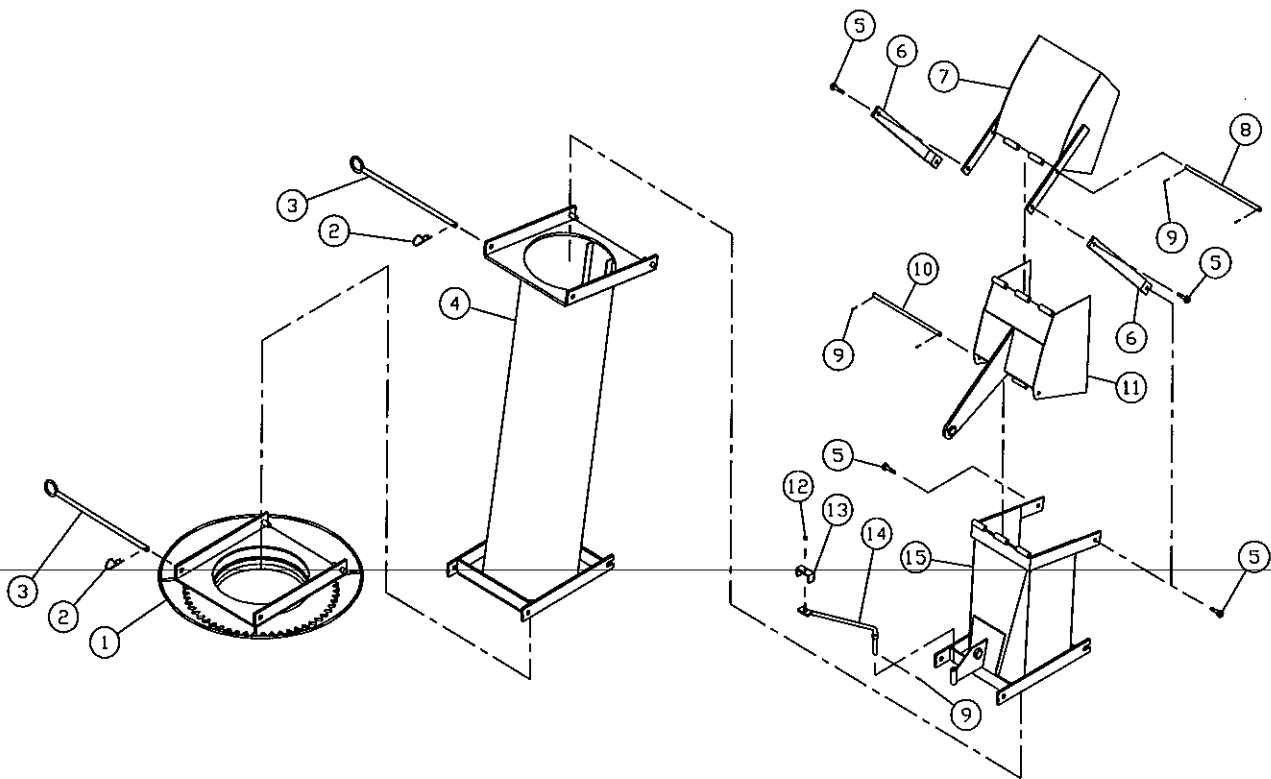
**10**

# SEMI-INDUSTRIAL CHUTE PSI-9204



REF.	PART #	DESCRIPTION	QTY
1	110-01581	Chute base .....	1
2	Std.	Bolt ½" NC x 1 ½ lg + nylon lock nut .....	4
3	9419	Lower chute deflector .....	1
4	Std.	Cotter pin 1/8" x 1" lg .....	5
5	9418	Lower chute deflector pin .....	1
6	9415	Connecting rod .....	2
7	9416	Upper chute deflector .....	1
8	9417	Upper chute deflector pin .....	1
9	Std.	Nylon locknut 5/16" NC .....	1
10	140-00881	Hoses support plate .....	1
11	110-01111	Hoses support rod .....	1

# INDUSTRIAL CHUTE PC-9204

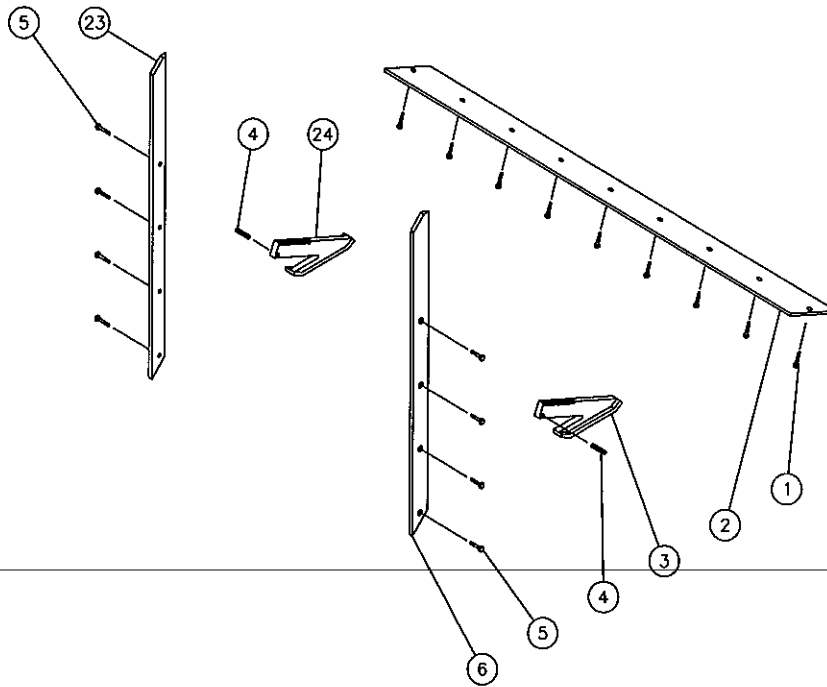


REF.	PART #	DESCRIPTION	QTY
1	110-00681	Chute adaptor with quick attach .....	1
2	Std.	Hitch pin clip 5/32" .....	2
3	9414	Pin for quick attach (adaptor & extension) .....	2
4	PR-92104	Extension 48" .....	opt.
5	Std.	Bolt 1/2" NC x 1 1/2" lg + nylon lock nut .....	4
6	9415	Connecting rod .....	2
7	9416	Upper deflector .....	1
8	9417	Upper deflector pin .....	1
9	Std.	Cotter pin 1/8" x 1" lg .....	5
10	9418	Lower deflector pin .....	1
11	9419	Lower deflector .....	1
12	Std.	Nylon locknut 5/16" NC .....	1
13	140-00881	Hoses support plate .....	1
14	110-01111	Hoses support rod .....	1
15	110-01541	Chute base .....	1
NI*	120-00471	"Industrial" chute assembly (includes # 5, 6, 7, 8, 9, 10, 11, & 15) .....	1

**10**

\*NI = NOT ILLUSTRATED

# HEAVY DUTY KIT

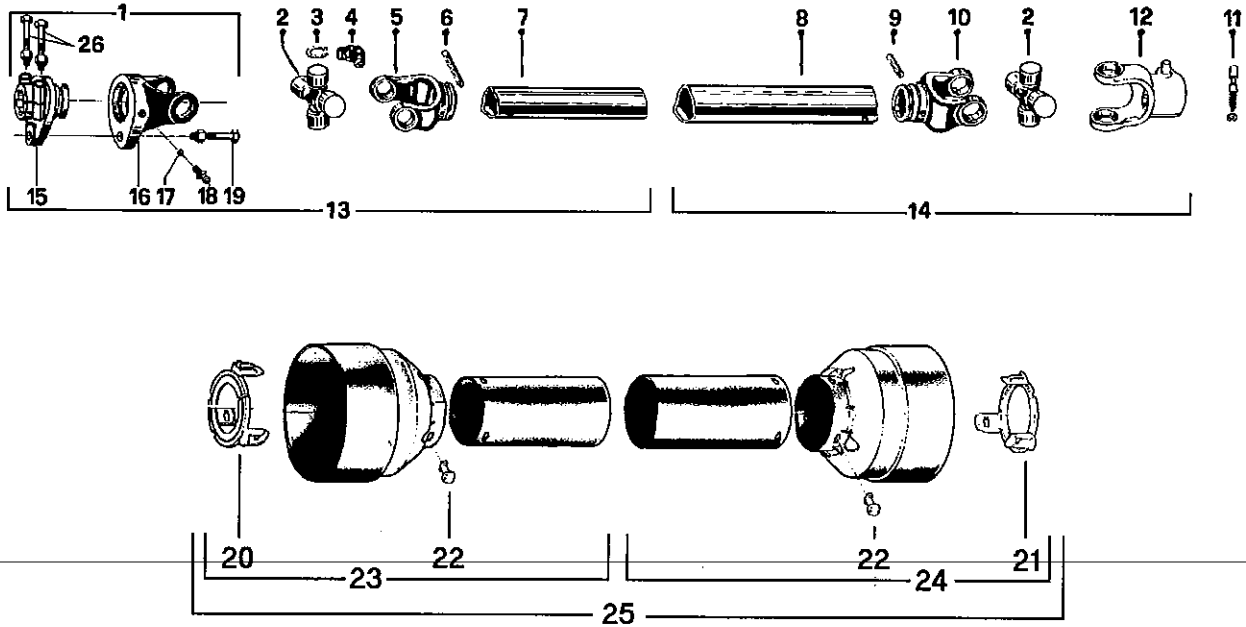


REF.	PART #	DESCRIPTION	P-992	P-992 TRC	P-980	P-980 TRC	P-1040 TRC
1	125-0717	Plow bolt 7/16" NC x 1 3/4" lg + nut & lock washer .....	7	7	8	8	9
2	140-01041	Carbon steel scraper blade (not reversible) 4 1/2" x 84 1/2" .....	1	1	-	-	-
2	140-01021	Carbon steel scraper blade (not reversible) 4 1/2" x 90 1/2" .....	-	-	1	1	-
2	140-01031	Carbon steel scraper blade (not reversible) 4 1/2" x 96 1/2" .....	-	-	-	-	1
3	110-01571	Carbon steel skid shoe (right side) .....	1	1	1	1	1
4	Std.	Roll pin 1/4" x 1 1/2" lg .....	2	2	2	2	2
5	125-0715	Plow bolt 7/16" NC x 1 1/2" lg + nut & lock washer .....	8	8	8	8	8
6	8214-D	Lateral blade (right side) .....	1	1	-	-	-
6	9397-D	Lateral blade (right side) .....	-	-	1	1	1
23	8214-G	Lateral blade (left side) .....	1	1	-	-	-
23	9397-G	Lateral blade (left side) .....	-	-	1	1	1
24	110-01561	Carbon steel skid shoe (left side) .....	1	1	1	1	1
NI*	9425	Full flight spiked auger 23" ø for P-992 (TRC) .....	1	1	-	-	-
NI*	9426	Full flight spiked auger 26" ø for P-980 (TRC) .....	-	-	1	1	-
NI*	9427	Full flight spiked auger 26" ø for P-1040TRC .....	-	-	-	-	1

**10**

\*NI = NOT ILLUSTRATED

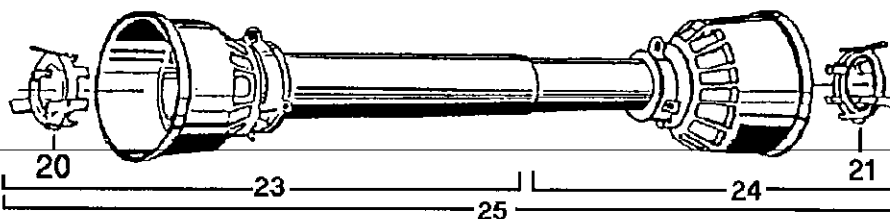
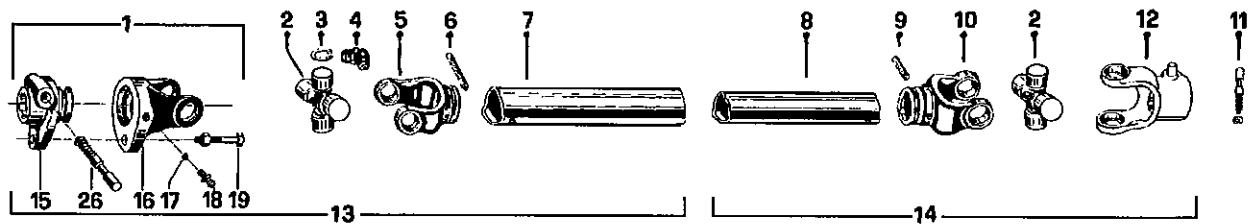
# P.T.O. SHAFT # 9225-EG (T80)



REF.	PART #	DESCRIPTION	QTY
1	9453	Safety shear yoke (2 bolts) .....	1
2	9208	U-joint + 4 retaining rings + 1 grease fitting .....	2
3	9454	Retaining ring .....	8
4	8110	Grease fitting .....	2
5	9214	Yoke for inner tube .....	1
6	8075	Stopper for inner tube .....	1
7	9212	Inner tube .....	1
8	9211	Outer tube .....	1
9	9210-E	Stopper for outer tube .....	1
10	9209	Yoke for outer tube .....	1
11	8068	Yoke stopper 1 3/8" .....	2
12	9455	Yoke with hole 1 3/8"-6 splines + yoke stopper 1 3/8" .....	1
12	9463	Yoke with hole 1 3/8"-21 splines + yoke stopper 1 3/8" .....	1
12	9224	Yoke with hole 1 3/4"-20 splines + yoke stopper .....	1
13	9456	P.T.O. section, side with safety shear bolt, inner part, without protector .....	1
14	9457	P.T.O. section, side without safety shear bolt, outer part, without protector .....	1
15	9458	Adaptor 1 1/4"-20 splines (2 bolts) .....	1
16	9204	Yoke and shearplate .....	1
17	9205	Ball .....	17
18	8071	Grease fitting .....	1
19	9207	Safety shear bolt M12 x 65mm .....	1
20	9459	Bearing ring for inner guard tube .....	1
21	9460	Bearing ring for outer guard tube .....	1
22	8109	Stopper .....	6
23	9221	Inner shield .....	1
24	9220	Outer shield .....	1
25	9222	Complete shield .....	1
26	9461	Bolt M12 x 90mm + lock nut .....	2

**10**

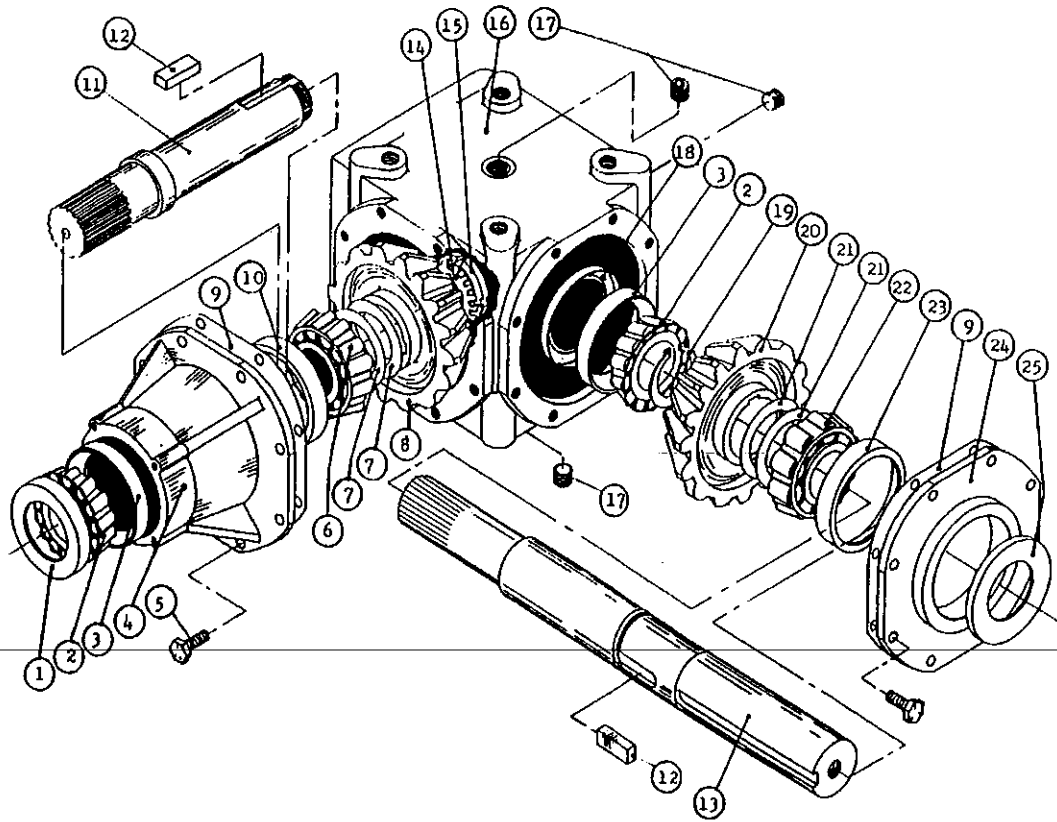
# P.T.O. SHAFT # 9500 (110N)



REF.	PART #	DESCRIPTION	QTY
1	9501	Quick disconnect yoke assembly 1 3/8"-6 splines .....	1
2	9502	U-joint + 4 retaining rings + 1 grease fitting .....	2
3	9503	Retaining ring .....	8
4	8110	Grease fitting .....	2
5	9504	Yoke for outer tube .....	1
6	9505	Stopper for outer tube .....	1
7	9506	Outer tube .....	1
8	9507	Inner tube .....	1
9	9508	Stopper for inner tube .....	1
10	9509	Yoke for inner tube .....	1
11	9412	Yoke stopper 1 3/8" .....	2
12	9510	Yoke with hole 1 3/4"-20 splines + yoke stopper 1 3/8" .....	1
13	9511	P.T.O. section, side with safety shear bolt, outer part, without protector .....	1
14	9512	P.T.O. section, side without safety shear bolt, inner part, without protector .....	1
15	9513	Adaptor (push pin) .....	1
16	9514	Yoke and shearplate .....	1
17	9205	Ball .....	24
18	8071	Grease fitting .....	1
19	9515	Safety shear bolt M14 x 70mm .....	1
20	9218	Bearing ring for outer guard tube .....	1
21	9219	Bearing ring for inner guard tube .....	1
23	9519	Outer shield .....	1
24	9520	Inner shield .....	1
25	9521	Complete shield .....	1
26	8068	Yoke stopper .....	1

10

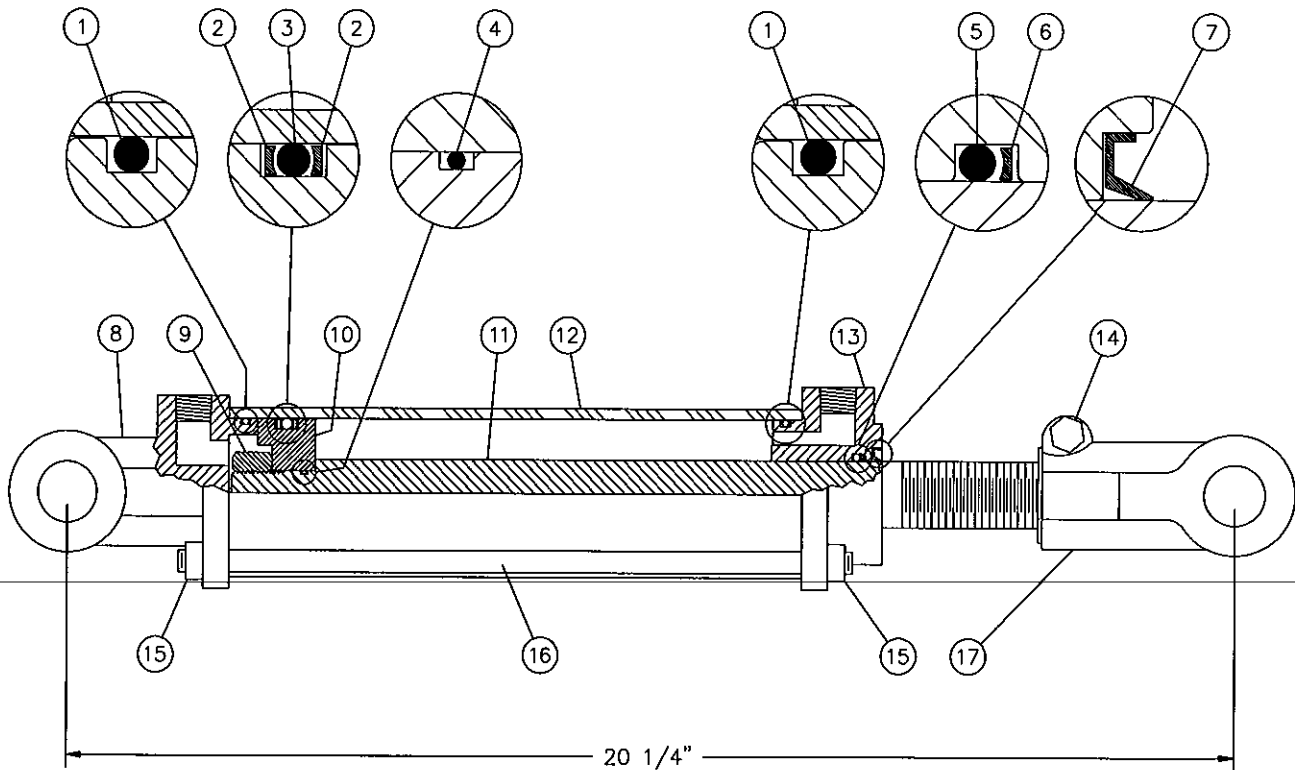
# GEAR BOX # 9307 (T279)



REF.	PART #	DESCRIPTION	QTY
1	6314	Oil seal 52 x 85 x 10 .....	1
2	6315	Bearing 30209: cone .....	2
3	6317	Bearing 30209: cup .....	2
4	6318	Extension .....	1
5	6319	Bolt M10 x 22 .....	16
6	6320	Bearing 32209: cone .....	1
7	6321	Shim .....	2
8	6322	Gear Z21 .....	1
9	6323	Gasket .....	2
10	6324	Bearing 32209: cup .....	1
11	6325	Side shaft Z20 (1 3/4" - 20 splines) .....	1
12	6326	Key B14 x 9 x 40 .....	2
13	9345	Impeller shaft (2" & 1 3/4" - 20 splines) .....	1
14	6328	Spring washer .....	1
15	6329	Lock nut M40 x 1.5 H9 .....	1
16	6330	Casing .....	1
17	6331	Plug 3/8" gas .....	3
18	6332	Dust excluder 45 x 72 x 8 .....	1
19	6333	External circlip 50 UNI7435 .....	1
20	6434	Gear Z21 .....	1
21	6335	Shim .....	2
22	6336	Bearing 30210: cone .....	1
23	6337	Bearing 30210: cup .....	1
24	6338	Cover .....	1
25	6339	Oil seal 50 x 72 x 8 .....	1
2 + 3	6411	Roller bearing no. 30209 .....	2
6 + 10	6410	Roller bearing no. 32209 .....	1
22 + 23	6412	Roller bearing no. 30210 .....	1

**10**

# CYLINDER 25TR08



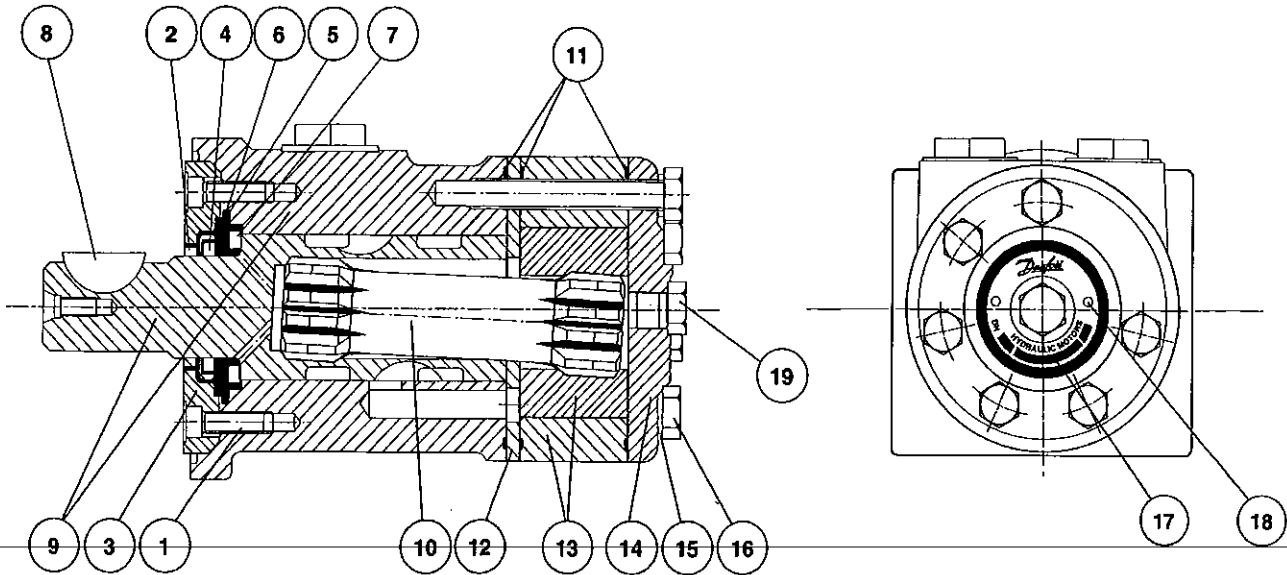
REF.	PART #	DESCRIPTION	QTY
1	See #RK25TR	O-ring 1/8" x 2 1/4" x 2 1/2" .....	2
2	See #RK25TR	Back-up 2 1/2" o.d. x 3/16 ø .....	2
3	See #RK25TR	O-ring 3/16" x 2 1/8" x 2 1/2" .....	1
4	See #RK25TR	O-ring 1/16" x 5/8" x 3/4" .....	1
5	See #RK25TR	O-ring 1/8" x 1 1/8" x 1 3/8" .....	1
6	See #RK25TR	Back-up 1 3/8" o.d. x 1/8" ø .....	1
7	See #RK25TR	Wiper 1 1/8" i.d. x 1 5/8" o.d. ....	1
8	492401	Yoke (for 2 1/2" tube) .....	1
9	Std.	Nut 3/8" NF .....	1
10	4924-31	Piston 2 1/2" ø .....	1
11	491980	Piston rod 1 1/8" .....	1
12	491668	Cylinder body 2 1/2" ø .....	1
13	492421	Head (for 2 1/2" tube) .....	1
14	Std.	Bolt 3/8" NC x 2 1/4" lg + nut .....	1
15	Std.	Nut 3/8" NC .....	8
16	Std.	Threaded rod 3/8" NC x 12" lg .....	4
17	458599	Yoke (for 1 1/8" rod) .....	1
NI*	8183	Pin 1" ø + cotter pin .....	2
NI*	RK25TR	Repair kit for cylinder 2 1/2" (includes # 1, 2, 3, 4, 5, 6, & 7) .....	1

**10**

\*NI = NOT ILLUSTRATED



# HYDRAULIC MOTOR # DH 250 & DH 315






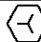

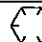
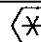
REF.	CODE #	DESCRIPTION	QTY	
			DH 250	DH 315
1	681X1961	Screw M5 x 16mm .....	6	6
2	151-1313	Dust seal ring .....	1	1
3	151-1827	Spigot flange .....	1	1
4	633B3385	Shaft seal BAKDH ring .....	1	1
5	633B1333	O-ring .....	1	1
6	151-1608	Bearing race .....	1	1
7	151-1458	Axial needle bearing .....	1	1
8	682L9054	Woodruff key .....	1	1
9	-----	Housing and output shaft .....	not sold	
10	151-2649	Cardan shaft .....	1	-
10	151-2650	Cardan shaft .....	-	1
11	633B1173	O-ring .....	3	3
12	151-1713	Distributor plate .....	1	1
13	151-1193	Gear wheel set .....	1	-
13	151-1186	Gear wheel set .....	-	1
14	151-2641	End cover .....	1	1
15	684X2481	Washer .....	6	6
16	681X0184	Screw M8 x 1.25mm Din 931 x 60mm lg .....	6	-
16	681X0186	Screw M8 x 1.25mm Din 931 x 70mm lg .....	-	6
17	151A0415	Name plate .....	1	1
18	681Z1011	Drive screw .....	2	2
19	631X2013	Drain plug 7/16"-20 UNF .....	1	1
NI*	151-1273	Set of seals .....	1	1

**10**




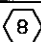
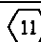
\*NI = NOT ILLUSTRATED

# TORQUE CHART

## TORQUE SPECIFICATION TABLE

Thread UNC and UNF		Grade 2 				Grade 5   				Grade 8*   			
Bolt size		Torque				Torque				Torque			
Inches	mm	Pound feet min.	Pound feet max.	Newton meters min.	Newton meters max.	Pound feet min.	Pound feet max.	Newton meters min.	Newton meters max.	Pound feet min.	Pound feet max.	Newton meters min.	Newton meters max.
1/4	6.35	5	6	6.8	8.13	9	11	12.2	14.9	12	15	16.3	30.3
5/16	7.94	10	12	13.6	16.3	17	20.5	23.1	27.8	24	29	32.5	39.3
3/8	9.53	20	23	27.1	31.2	35	42	47.5	57.0	45	54	61.0	73.2
7/16	11.11	30	35	40.7	47.4	54	64	73.2	86.8	70	84	94.9	113.9
1/2	12.70	45	52	61.0	70.5	80	96	108.5	130.2	110	132	149.2	179.0
9/16	14.29	65	75	88.1	101.6	110	132	149.2	179.0	160	192	217.0	260.4
5/8	15.88	95	105	128.7	142.3	150	180	203.4	244.1	220	264	298.3	358.0
3/4	19.05	150	185	203.3	250.7	270	324	366.1	439.3	380	456	515.3	618.3
7/8	22.23	160	200	216.8	271.0	400	480	542.4	650.9	600	720	813.6	976.3
1	25.40	250	300	338.8	406.5	580	696	786.5	943.8	900	1080	1220.4	1464.5
1 1/8	25.58	-	-	-	-	800	880	1084.8	1193.3	1280	1440	1735.7	1952.6
1 1/4	31.75	-	-	-	-	1120	1240	1518.7	1681.4	1820	2000	2467.9	2712.0
1 3/8	34.93	-	-	-	-	1460	1680	1979.8	2278.1	2380	2720	3227.3	3688.3
1 1/2	38.10	-	-	-	-	1940	2200	2630.6	2983.2	3160	3560	4285.0	4827.4

\* Thick nuts must be used with grade 8 bolts.

Size of screw	Thread	Pitch (mm)	Grade 4T  				Grade 7T 				Grade 8T  			
			Torque				Torque				Torque			
			Pound feet min.	Pound feet max.	Newton meters min.	Newton meters max.	Pound feet min.	Pound feet max.	Newton meters min.	Newton meters max.	Pound feet min.	Pound feet max.	Newton meters min.	Newton meters max.
M6	UNC	1.00	3.6	5.8	4.9	7.9	5.8	9.4	7.9	12.7	7.2	10	9.8	13.6
M8	UNC	1.25	7.2	14	9.8	19	17	22	23	29.8	20	26	27.1	35.2
M10	UNC	1.5	20	25	27.1	33.9	34	40	46.1	54.2	38	46	51.5	62.3
M12	UNC	1.75	28	34	37.9	46.1	51	59	69.1	79.9	57	66	77.2	89.4
M14	UNC	2.0	49	56	66.4	75.9	81	93	109.8	126	96	109	130.1	147.7
M16	UNC	2.0	67	77	90.8	104.3	116	130	157.2	176.2	129	145	174.8	196.5
M18	UNC	2.0	88	100	119.2	136	150	168	203.3	227.6	175	194	237.1	262.9
M20	UNC	2.5	108	130	146.3	176.2	186	205	252	277.8	213	249	288.6	337.4
M8	UNF	1.0	12	17	16.3	23	19	27	25.7	36.6	22	31	29.8	42
M10	UNF	1.25	20	29	27.1	39.3	35	47	47.4	63.7	40	52	54.2	70.5
M12	UNF	1.25	31	41	42	55.6	56	68	75.9	92.1	62	75	84	101.6
M14	UNF	1.5	52	64	70.5	86.7	90	106	122	143.6	107	124	145	168
M16	UNF	1.5	69	83	93.5	112.5	120	138	162.6	187	140	158	189.7	214.1
M18	UNF	1.5	100	117	136	158.5	177	199	239.8	269.6	202	231	273.7	313
M20	UNF	1.5	132	150	178.9	203.3	206	242	279.1	327.9	246	289	333.3	391.6

Use the above torques when special torque is not given.

NOTE: These values apply to fasteners as received from supplier, dry, or when lubricated with normal engine oil. They do not apply if extreme pressure lubricants are used.

---

---

## **WARRANTY**

---

PRONOVOST warrants this product to the initial purchaser for the period of one year from the date of purchase against defects in materials and workmanship.

We will replace or repair defective parts free of charge if they are returned to our plant in St-Tite, Quebec, Canada.

Transportation charges are the responsibility of the customer. This warranty is not transferable.

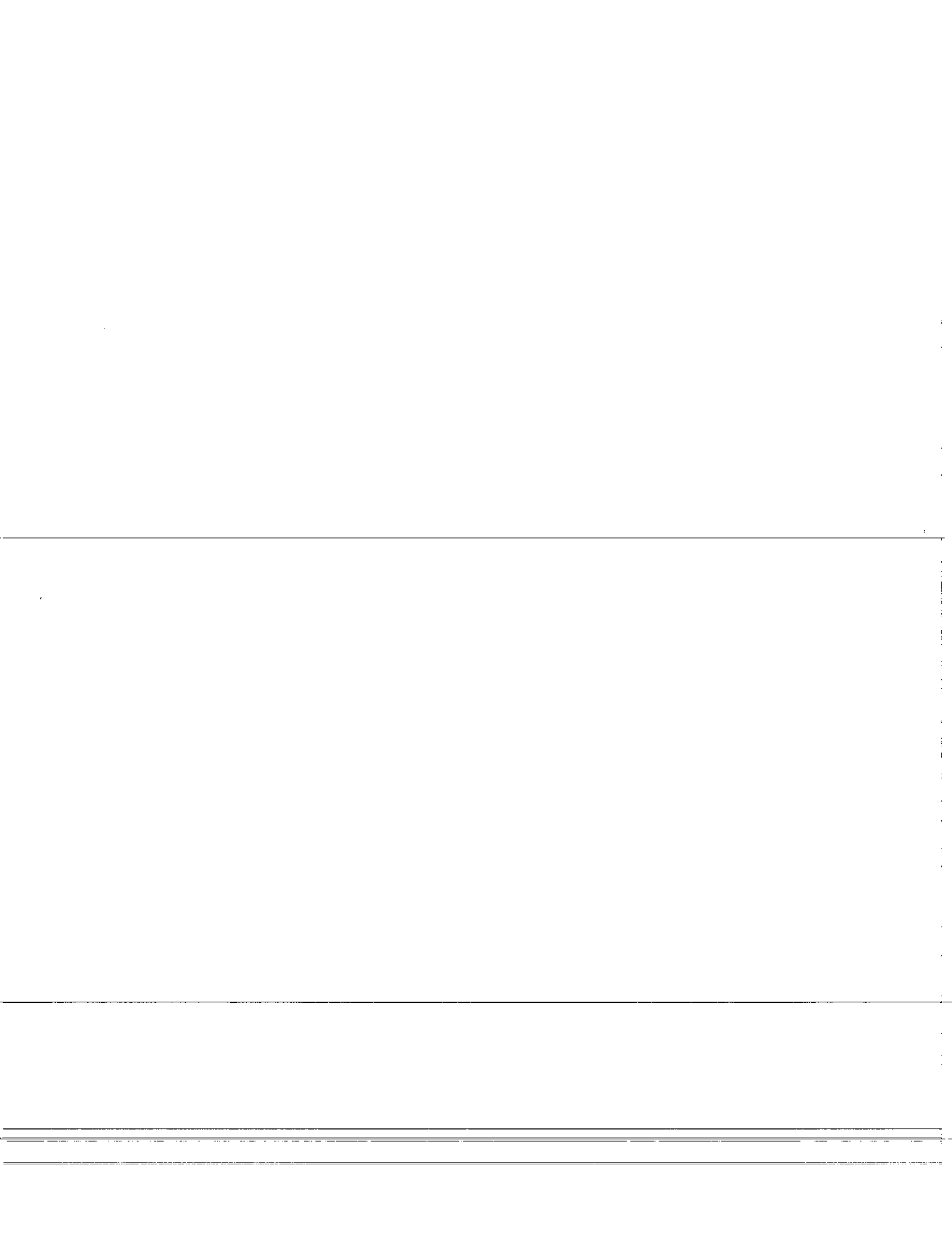
Hydraulic cylinders and motors are covered by the manufacturer of these items.

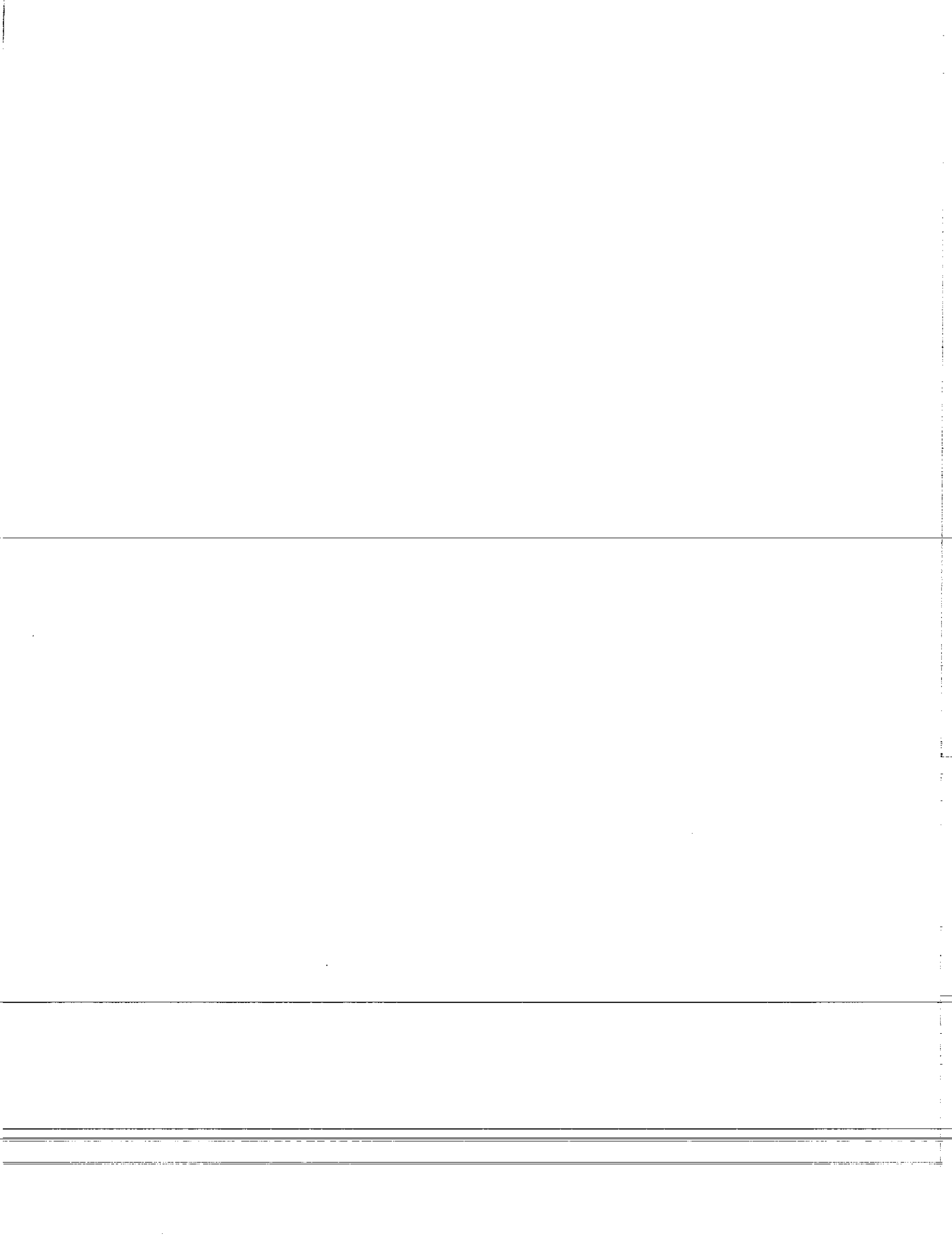
All PRONOVOST spare parts purchased are covered by a three (3) month warranty.

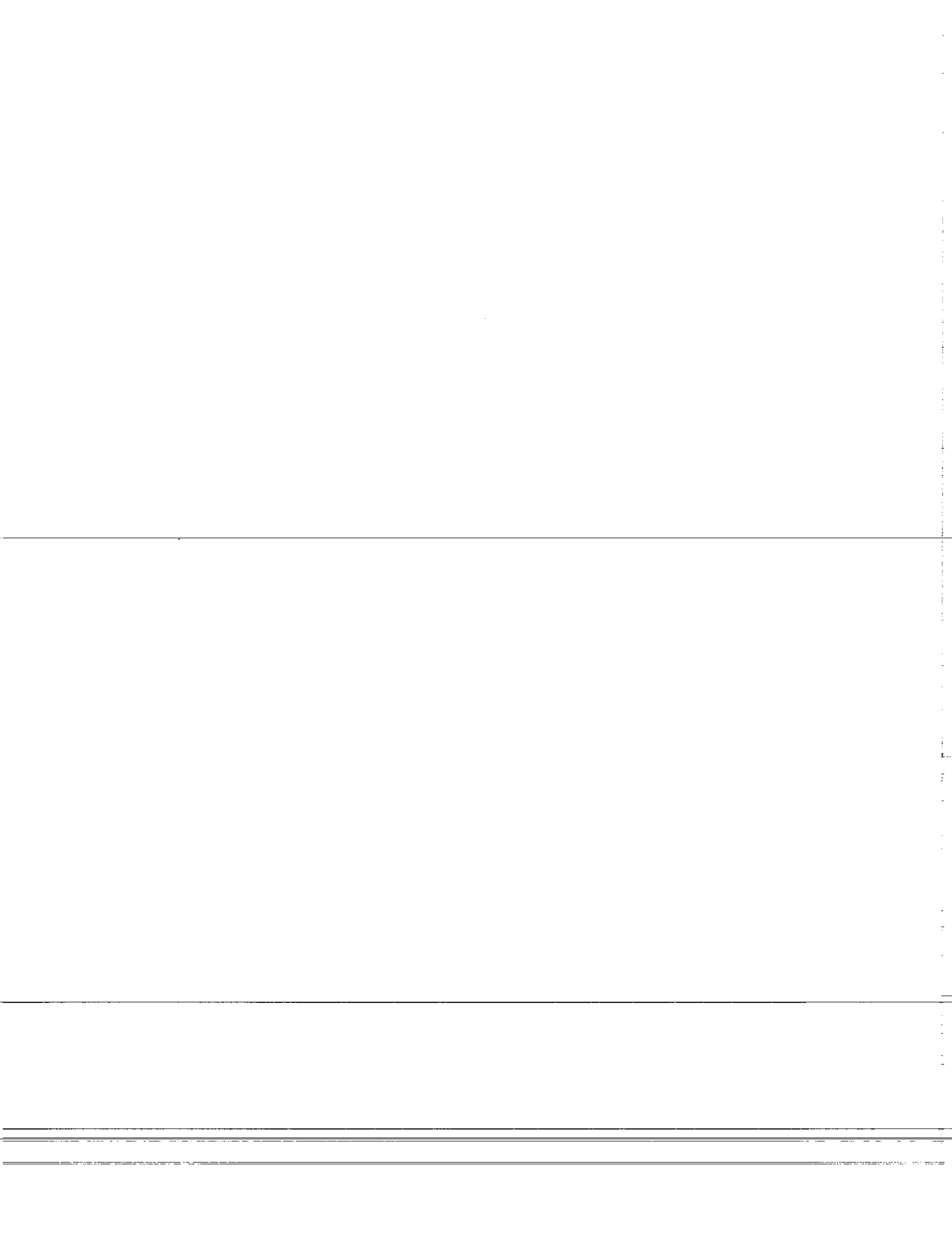
This warranty becomes void and nul if the equipment is modified, breaks down as the result of an accident, is not operated according to manufacturer's recommendations, damaged by negligence or if maintenance has not been carried out as specified.

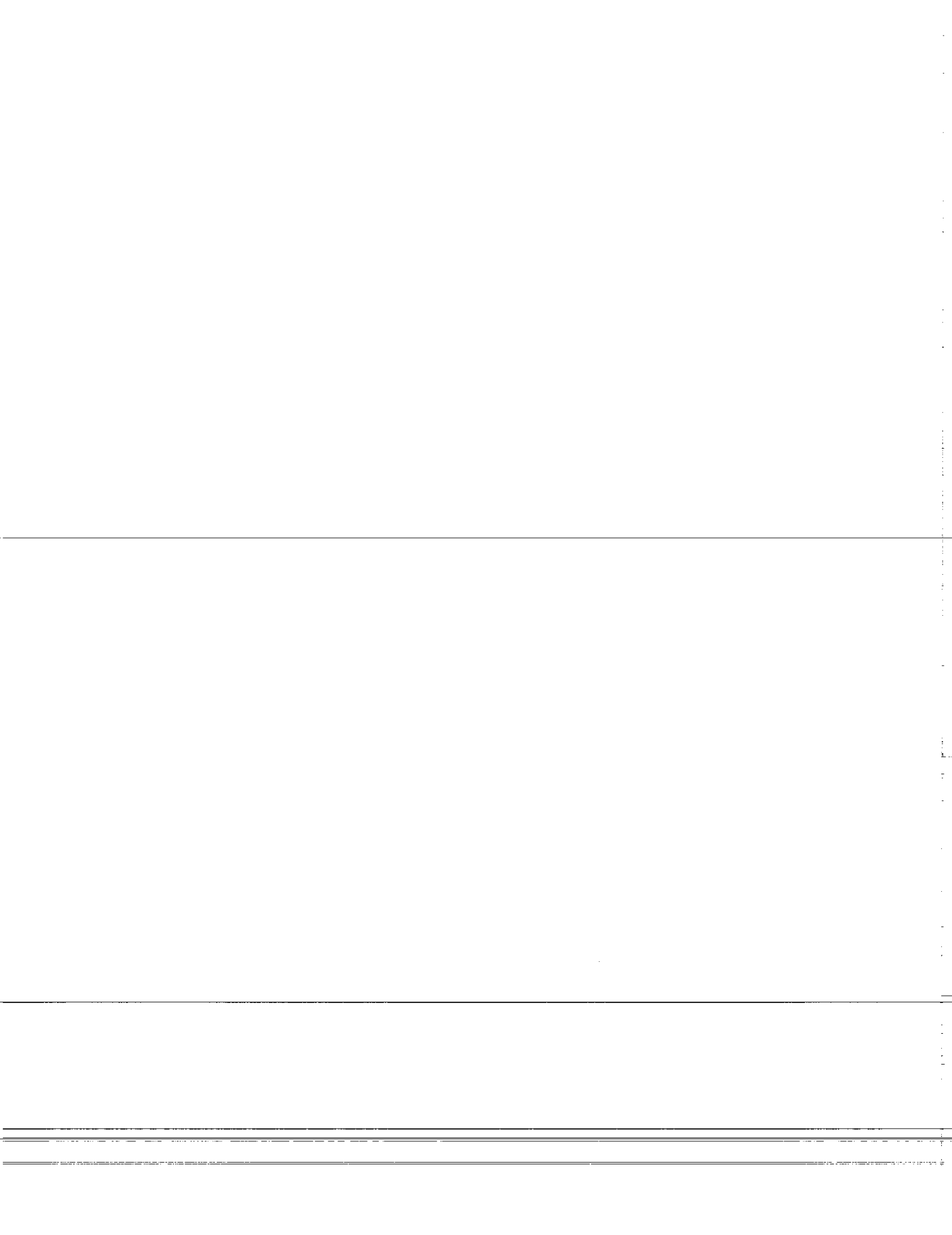
Our obligation is limited to the replacement or repair of the defective part. PRONOVOST accepts no responsibility for direct or indirect consequential damages of any kind.

**12**









Ce manuel est aussi disponible en français.  
Veuillez téléphoner.



**INNOVATION - EXCELLENCE**

**LES MACHINERIES PRONOVOST INC.**  
260, route 159,  
Saint-Tite, Quebec, Canada, G0X 3H0

Tel.: (418) 365-7551, Fax: (418) 365-7954