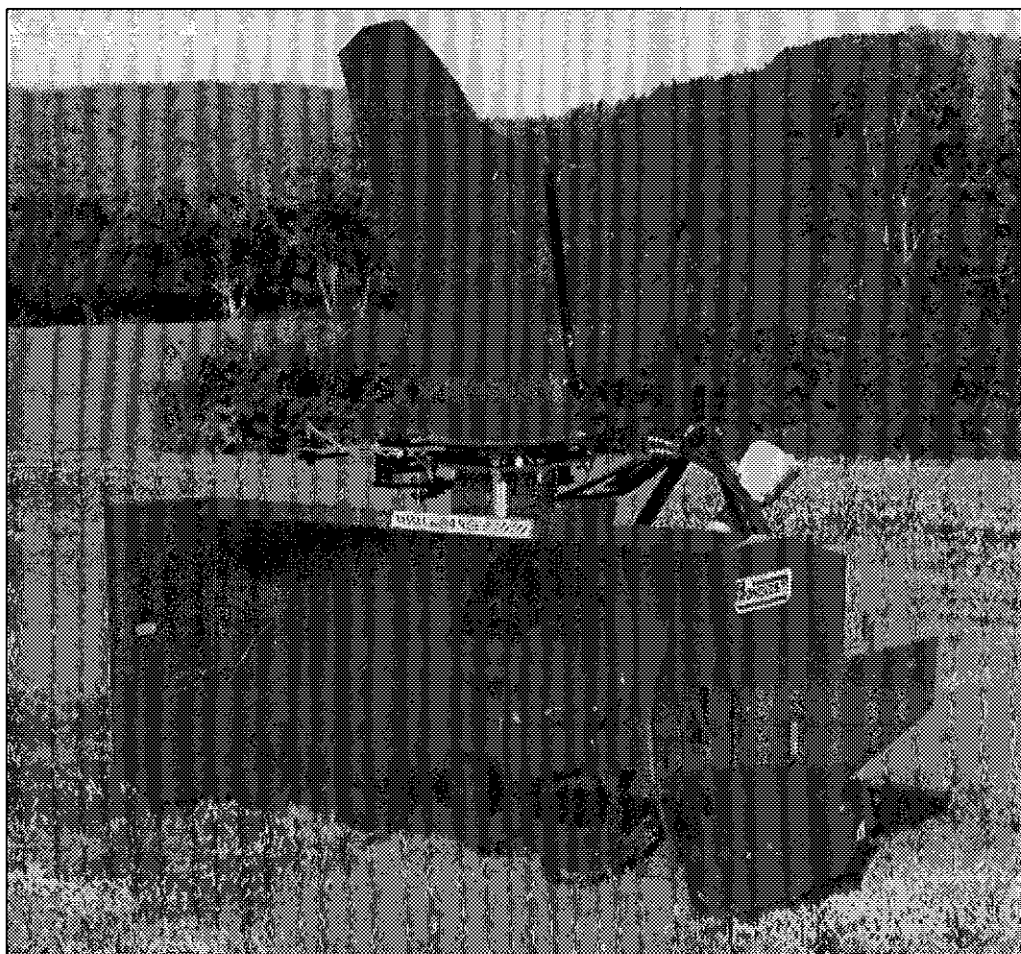


PRONOVOST

OWNER'S MANUAL



Snowblowers **Models**

P-740 & P-740TRC

P-860 & P-860TRC

P-800 & P-800TRC

P-862 & P-862TRC

P-920 & P-920TRC

Copyright © Les Machineries Pronovost Inc., 1995

All rights reserved.
Printed in Canada.

TABLE OF CONTENTS

| Section | Item | Page |
|---------|--|------|
| 1 | Introduction | 5 |
| 2 | Safety | 6 |
| | General Safety | 6 |
| | Safety in Operation | 6 |
| | Safety with Maintenance | 7 |
| | Safety in Transport | 7 |
| | Safety in Storage | 7 |
| 3 | Decals | 8 |
| | Safety Decals | 8 |
| | Maintenance Decals | 10 |
| 4 | Assembly | 11 |
| | General assembly | 11 |
| | Manual Chute Kit | 12 |
| | Hydraulic Chute Kit: Cylinder | 13 |
| | Hydraulic Chute Kit: Motor | 14 |
| 5 | Start-up | 15 |
| | Basic Start-up Procedures | 15 |
| 6 | Maintenance | 16 |
| 7 | Storage | 17 |
| 8 | Trouble Shooting | 18 |
| 9 | Specifications | 20 |
| 10 | Parts List | 21 |
| | Snowblowers P-740 P-800 P-860 | 21 |
| | Snowblowers P-740TRC P-800TRC P-860TRC | 24 |
| | Snowblower P-862 | 27 |
| | Snowblower P-862TRC | 30 |
| | Snowblower P-920 | 33 |
| | Snowblower P-920TRC | 36 |
| | Manual Chute Kit M-7486 | 39 |
| | Hydraulic Chute Kit: Cylinder H-7486 | 40 |
| | Hydraulic Chute Kit: Motor SP-7486 | 41 |
| | Semi-industrial Chute PSI-7486 | 42 |
| | Industrial Chute PC-7486 | 43 |
| | Heavy Duty Kit | 44 |
| | P.T.O. Shaft 8114-EG | 45 |
| | P.T.O. Shaft 8202 | 46 |
| | P.T.O. Shaft 9225-EG | 47 |
| | P.T.O. Shaft 9500 | 48 |
| | Gear Box 8251 | 49 |
| | Gear box 8270 | 50 |
| | Gear box 9522 | 51 |
| | Cylinder 25TR08 | 52 |
| | Hydraulic Motor DH 250 & DH 315 | 53 |
| 11 | Torque Chart | 54 |
| 12 | Warranty | 55 |



INTRODUCTION

1

CONGRATULATIONS!

Thank you for choosing PRONOVOST. We are confident this equipment will meet your requirements in terms of quality, performance and reliability.

This manual was prepared to assist you in the safe operation of your new Snowblower. It contains important information which will help you achieve excellent returns with your Snowblower for years to come.

Please read this manual completely before operating your Snowblower and keep it for future reference.

Before starting the machine, you or any other person who will be operating the Snowblower must familiarize yourself with the safety recommendations and the operating instructions. Please read carefully and be sure to understand and follow all recommendations and procedures.

In this manual, the right and left sides are identified as shown on Figure 1.

If you require additional information on your Snowblower, please contact your PRONOVOST Dealer.

NOW take a moment to enter the model, serial number and the date of purchase of your Snowblower in the space provided.

When ordering parts from your Dealer, please refer to these numbers for a fast and efficient service. Use PRONOVOST parts for replacement.

The model and serial numbers are on the name plate shown on Fig. 1.

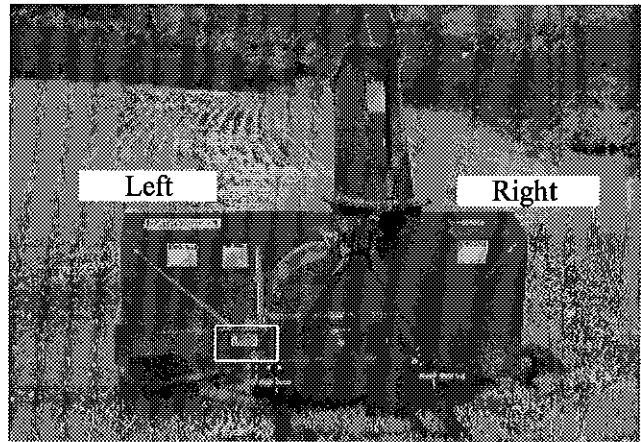


Figure 1

MODEL: _____

SERIAL NO: _____

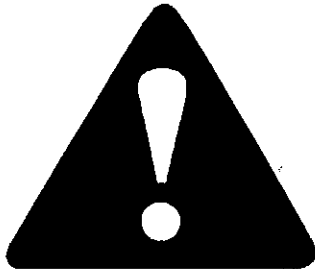
DATE OF PURCHASE: _____

SAFETY

GENERAL SAFETY

2

WHEN YOU SEE THIS SYMBOL



ATTENTION!

**BE ALERT
YOUR SAFETY IS INVOLVED**

This symbol «SAFETY ALERT» is used in this manual and on the safety decals on the Snowblower. It warns you of the possibility of danger. Carefully read, understand and follow all safety recommendations before operating the Snowblower.

- 1) Careful operation is the best assurance against accidents. Carefully read this manual and follow all recommendations before operating your Snowblower. It is the owner's responsibility to make sure that anyone who will operate the Snowblower will read this manual before operating the equipment.
- 2) Familiarize yourself with all controls and always be ready to stop the Snowblower quickly in case of emergency.
- 3) Never let a child operate the Snowblower.
- 4) Do not modify the Snowblower. Any non authorized modification may affect the efficiency and/or safety of the equipment.
- 5) Never operate the Snowblower with defective parts or if damaged in any way. Have it repaired before operating.
- 6) Make sure all fasteners are in place and properly secured or tightened. Refer to torque chart on page 54.
- 7) Avoid wearing loose fitting clothing when working with the Snowblower. These could get entangled in moving parts of the equipment and cause accidents.
- 8) Prolonged exposure to noise may hamper hearing. Protect yourself by wearing adequate protection devices.
- 9) Hydraulic fluids under pressure can damage your skin. Do not use your hands to locate a leak.
- 10) Before the beginning of the snow season, inspect all areas where the Snowblower will be used and remove any object which may cause an accident and/or damage the equipment.
- 11) Never operate your Snowblower in poor visibility or without proper lighting conditions.

SAFETY IN OPERATION

- 1) Be sure there are no obstructions around the equipment and that no one stands near the equipment when in operation.
- 2) Do not operate an engine in a confined or non ventilated area.
- 3) Do not perform any adjustments, cleaning, maintenance or repairs with the engine running. The engine must be stopped and the P.T.O. disengaged. Preferably remove the key from the ignition.
- 4) Wear adequate clothing when working in cold or windy conditions.
- 5) Adjust skid shoes for proper ground clearance of scraper blade, especially in rough terrain or soft ground conditions.
- 6) Before operating, make sure the P.T.O. is properly installed and secured.
- 7) Before starting-up the Snowblower, make sure the auger and drum areas are free of ice.
- 8) Put P.T.O. control in neutral position before starting engine.
- 9) Keep hands, feet and clothing away from moving parts of the Snowblower. Stay away from the discharge chute.

SAFETY (cont'd)

- 10) Before unplugging the chute, always disengage the P.T.O., stop the engine and relieve all hydraulic pressures.
- 11) Do not operate in excessive inclined conditions. Be careful when turning in slopes.
- 12) Never operate your Snowblower with missing guards or without protective devices in place.
- 13) Do not operate your Snowblower near buildings, windows or other vehicles without prior and proper adjustment of the chute deflector.
- 14) Never aim discharge chute towards people or animals. This may cause serious injuries.
- 15) Always reduce operating speed in slippery conditions.
- 16) Be careful when backing-up, make sure you have good visibility.
- 17) Always be on the lookout for objects which may enter the Snowblower.
- 18) If undue vibrations are felt, disengage the P.T.O., stop the motor and look for the cause of the vibration. Vibration is usually the indication of a problem.
- 19) At the end of the operation, disengage the P.T.O., lower the Snowblower, put transmission in neutral, apply parking brake, stop engine and remove the key from the ignition.

SAFETY WITH MAINTENANCE

- 1) Perform the Snowblower maintenance according to recommendations contained in this manual.

- 2) Stop engine and relieve all hydraulic pressures before doing inspection, maintenance or repairs.
- 3) Never perform any work under the Snowblower while it is supported only by the tractor's hydraulic system. It must be completely supported by wooden blocks or other safe means.

2

SAFETY IN TRANSPORT

- 1) On public roads, use proper safety lights and check local regulations.
- 2) Be alert while driving on the road. Never carry passengers.
- 3) Always disengage P.T.O. while moving from one area of work to another.
- 4) It is recommended to use both brake pedals simultaneously for better control.
- 5) The recommended road speed should be such as to maintain full control over steering and braking.
- 6) Be careful while backing up, make sure you have good visibility.

SAFETY IN STORAGE

- 1) Provide adequate supports to prevent any accidental overturning of the Snowblower.
- 2) Do not let children play in the area where the snowblower is stored.

DECALS

SAFETY DECALS

The safety decals are affixed wherever special safety precautions are indicated. Locate them on the machine and read them carefully. If a decal is damaged, lost or illegible, install a new one. The following photos indicate where each one must be installed.

3

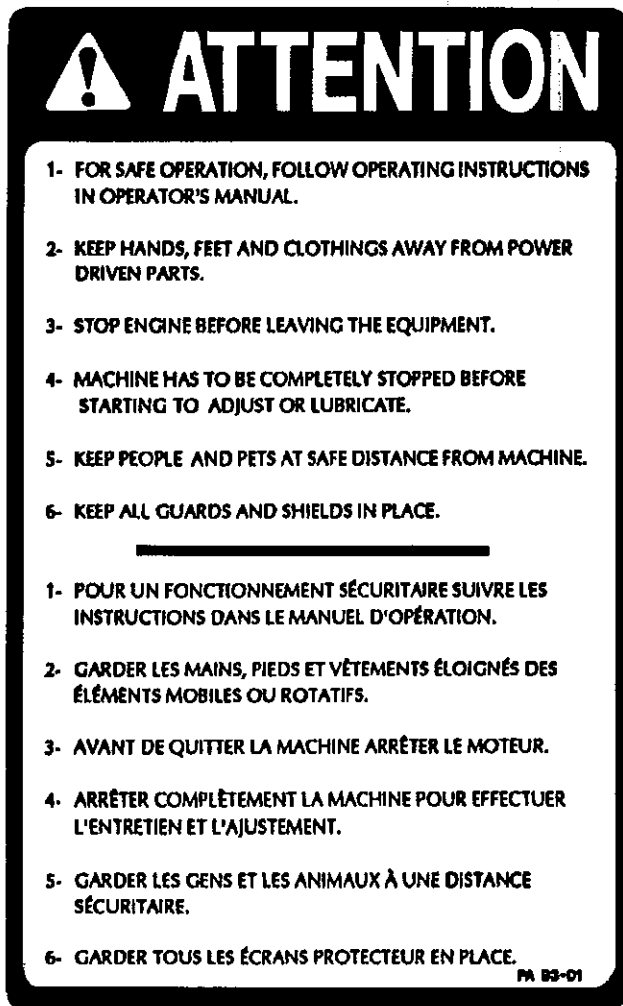


Figure 2
Decal A

Part no.: A102

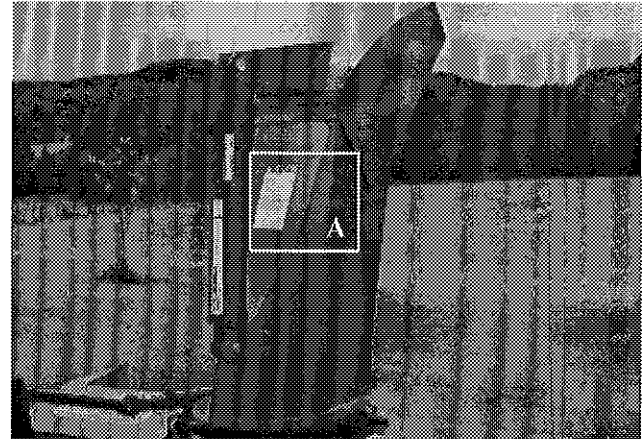


Figure 3

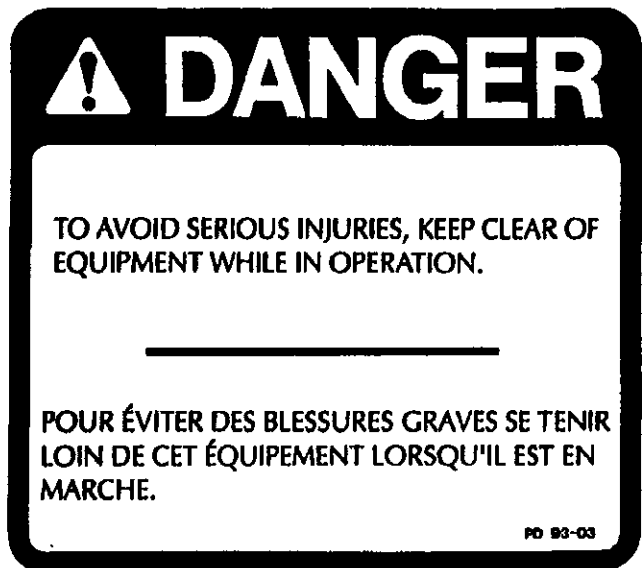


Figure 4
Decal B

Part no.: A101

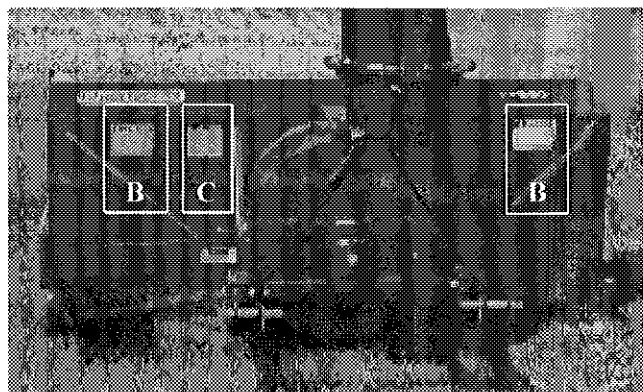


Figure 5

DECALS (cont'd)

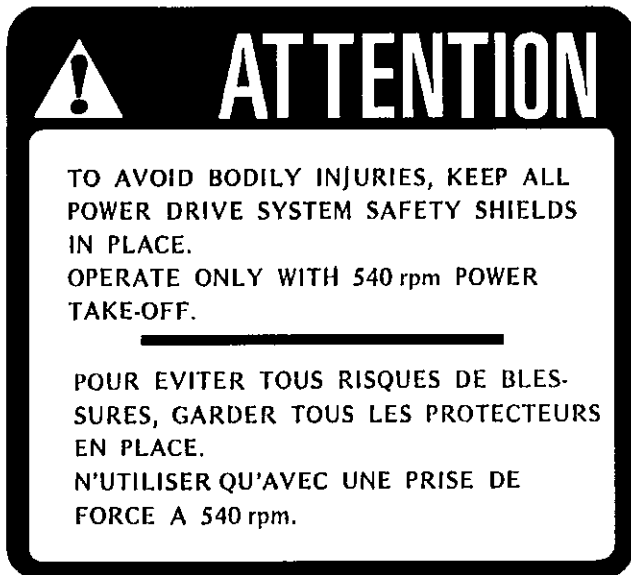


Figure 6
Decal C

Part no.: A107



Figure 7
Decal D

Part no.: A103



Figure 8

Decal E in Fig. 9 is located directly on the P.T.O. shaft. It is not visible when the safety shield is in place. It must never be visible when you operate the equipment.



Figure 9
Decal E

Part no.: A108

3

DECALS (cont'd)

3



Figure 10
Decal F

Part no.: A 109

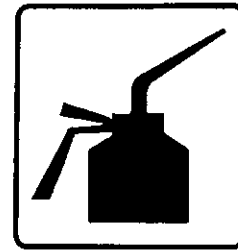
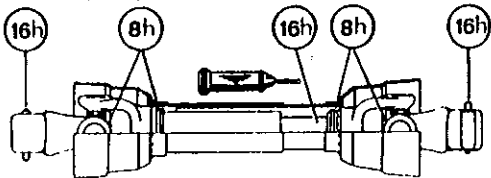


Figure 12

Part no.: A 105

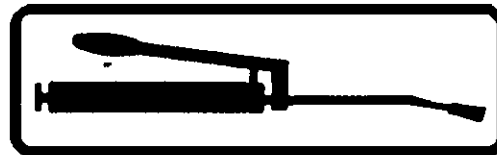


Figure 13

Part no.: A 106



Figure 14
Decal G

Part no.: A104

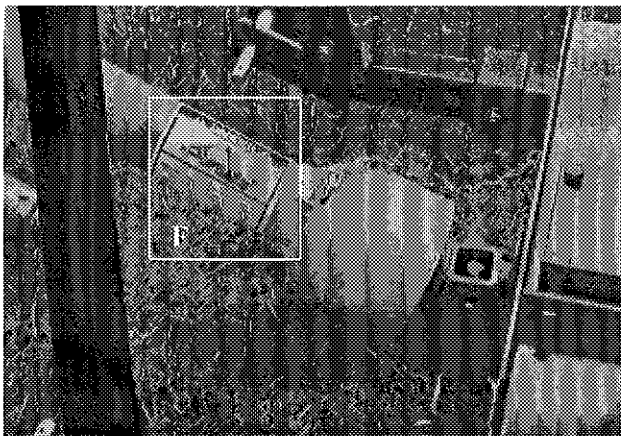


Figure 11

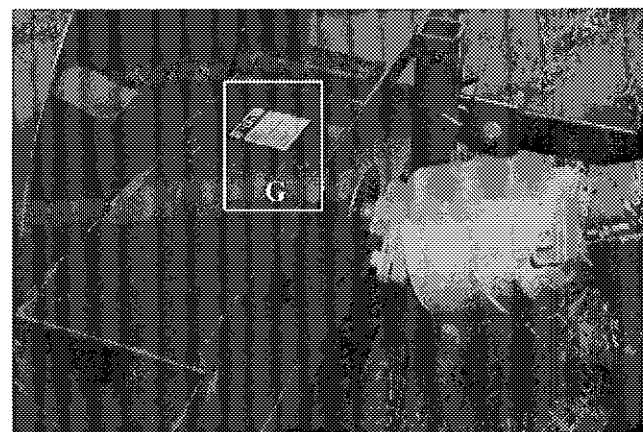


Figure 15

MAINTENANCE DECALS

The maintenance decals indicate the points requiring lubrication. Refer to maintenance section for more details.

ASSEMBLY

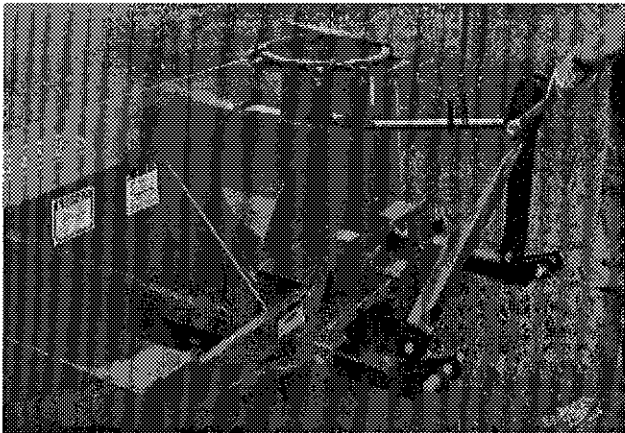


Figure 16



Figure 17

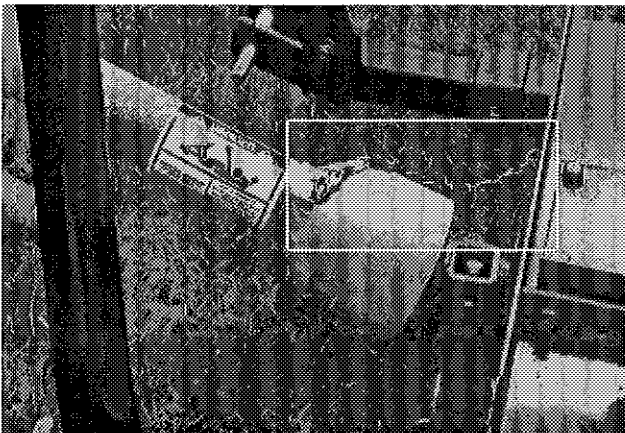


Figure 18

ASSEMBLY

- 1) The Snowblower is shipped partly assembled.
- 2) Install 3-point system according to the model of your Snowblower. (See section 10 for parts numbers). Use the holes most convenient to the type of tractor used (Fig. 16).
- 3) Install P.T.O. shaft with the shear pin end onto the Snowblower gear box (Fig. 17). Then attach safety shield support chain as shown (Fig. 18).
WARNING: The telescoping tubes of the drive shaft must never be allowed to bottom out while maintaining a minimum overlap of 6 inches.
- 4) If you install a hydraulic cylinder on the chute deflector, use model 25TR08 cylinder.
- 5) If equipped with a rotating drum, install a hydraulic cylinder model 25TR08.
- 6) For the installation of the chute rotation mechanism, please refer to page 12 through 14, according to the type used.

4

ASSEMBLY (cont'd)

4



Figure 19

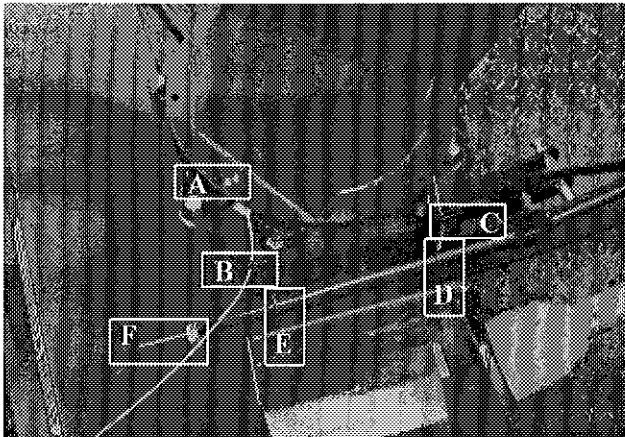


Figure 20

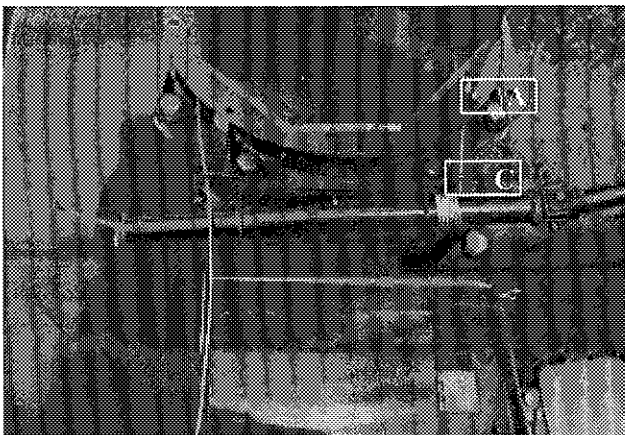


Figure 21

MANUAL CHUTE ROTATION

- 1) Install chute and kit as shown on page 39. Position chute with discharge facing toward the front of the Snowblower.
- 2) **Figure 19:** Hold steel cable so that end #1 will be 8" longer than end #2 and secure with cable clamp (A).
- 3) **Figure 20:** Turn chute counterclockwise until wire clamp (A) is near cable guide (B). Insert end #2 through guide (B) and leave it momentarily. Insert end #1 through cable guide (C) and then into spindle opening (D) and push it all the way through the end (F). Secure it temporarily with the 1/8" cable clamp and flat washer provided.
- 4) **Figure 21:** Turn crank clockwise until the cable clamp (A) is lined up with guide (C).
- 5) **Figure 22:** Insert the other end of the cable into the spindle opening (E) and push it all the way through the end (F). Secure both cables with the same cable clamp provided (F).

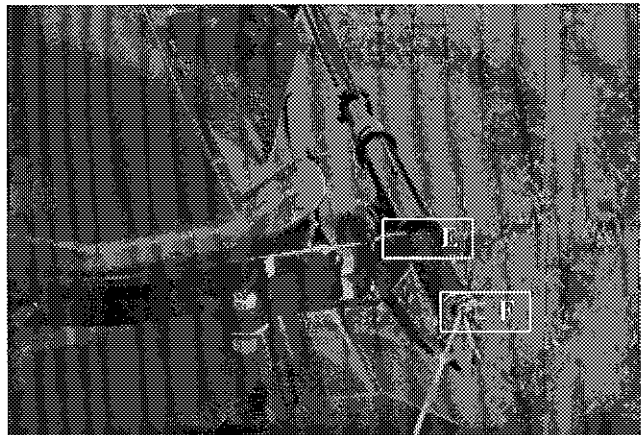


Figure 22

ASSEMBLY (cont'd)

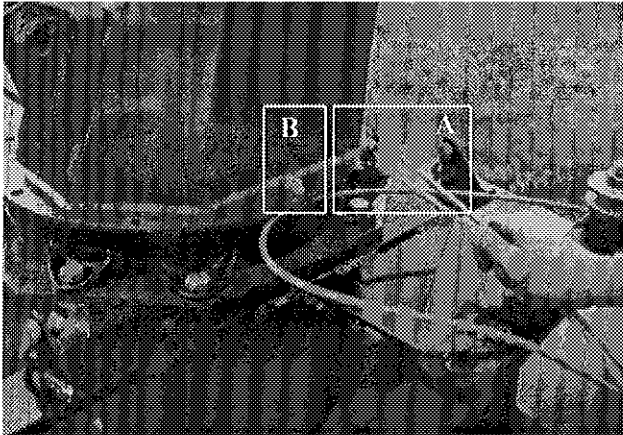


Figure 23

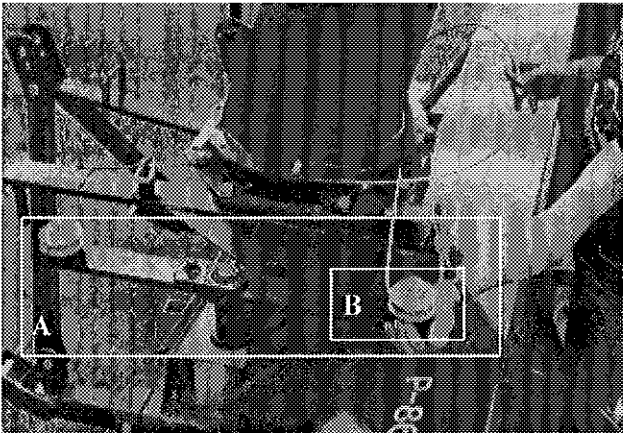


Figure 24

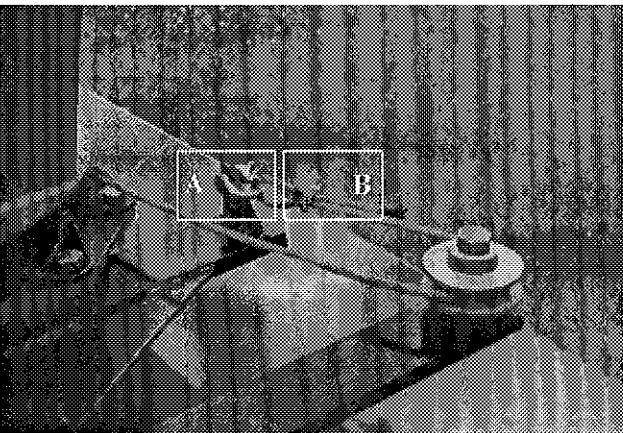


Figure 25

HYDRAULIC CHUTE ROTATION *Cylinder*

- 1) Install chute and kit as shown on page 40. Position chute with discharge towards the front of the Snowblower.
- 2) Place steel cable with both ends equal (A Fig. 23) and secure solidly with wire clamp provided (B Fig. 23).
- 3) Place pivot (A Fig. 24) perpendicular to the front of the Snowblower.
- 4) Pull cable end from the gearbox side, go around the chute, then around pulley (B Fig. 24), loop through clevis (A Fig. 25) and secure with cable clamp (B Fig. 25).
- 5) Pull other end of cable counterclockwise around the chute, then around pulley (A Fig 26), loop through clevis and secure with wire clamp.
- 6) Make sure the cable is tight.

4

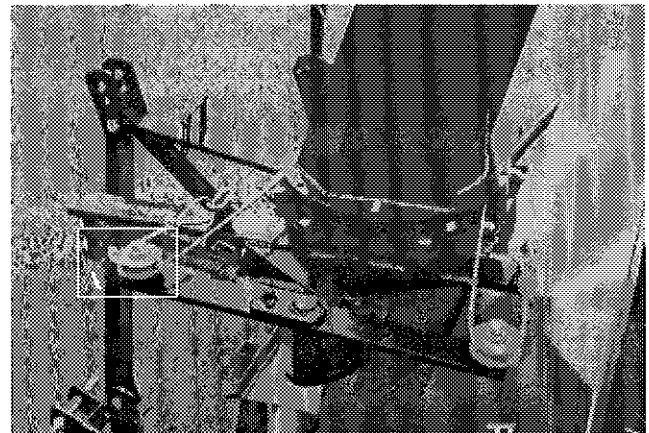
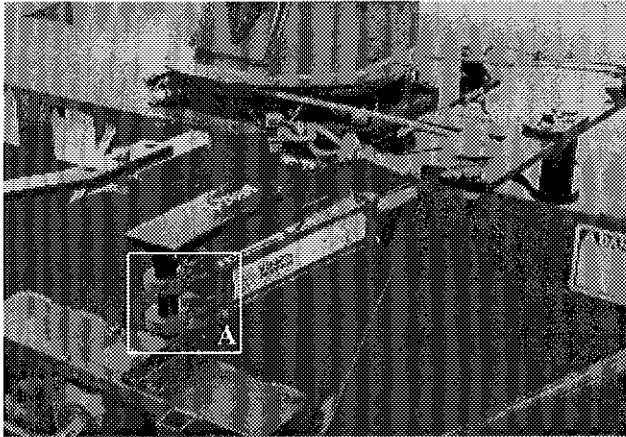


Figure 26

ASSEMBLY (cont'd)



4 **Figure 27**



Figure 28

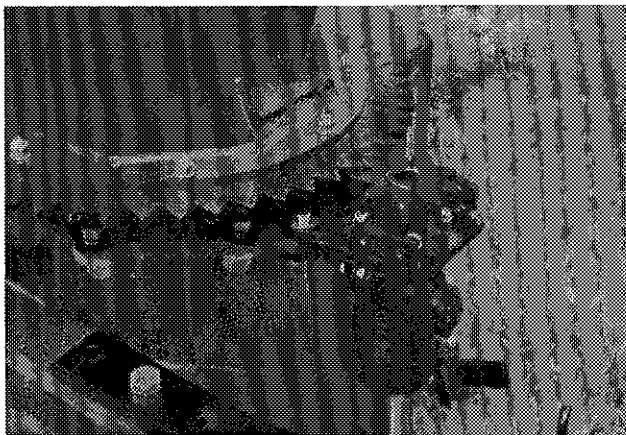


Figure 29

- 7) Install hydraulic cylinder with fittings facing down. Install end A of cylinder body as shown (Fig. 27) and install pin to secure it in place. Connect rod end to pivot plate.

HYDRAULIC CHUTE ROTATION Motor

- 1) Bolt the 47 tooth ring-gear onto chute flange with plain segment lined up with chute discharge opening (Fig. 28).
- 2) Install U-shaped UHMW piece, place chute on Snowblower and secure with retaining bracket and bolts provided.
- 3) Install motor mounting plate, motor and 9 tooth gear. See page 41 for bolt dimensions (Fig. 29).
- 4) The thickness of the 9 tooth gear is slightly more than the ring-gear. Make sure it exceeds on both sides of the ring gear.
- 5) Using the take-up screws, adjust gear to mesh without bottoming.
- 6) Install guard (Fig. 30).
- 7) It is recommended to use a cushion valve with the hydraulic motor.

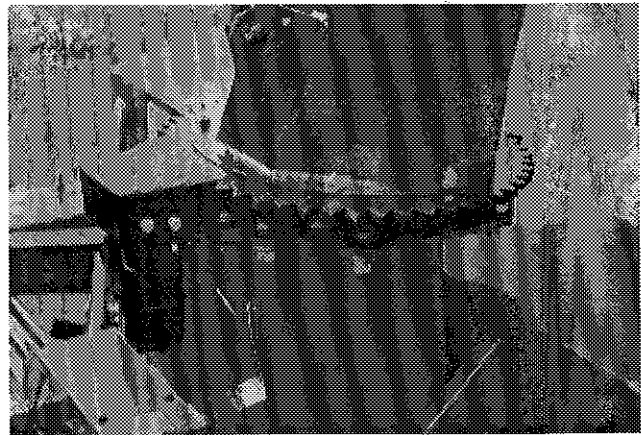


Figure 30

STARTING-UP

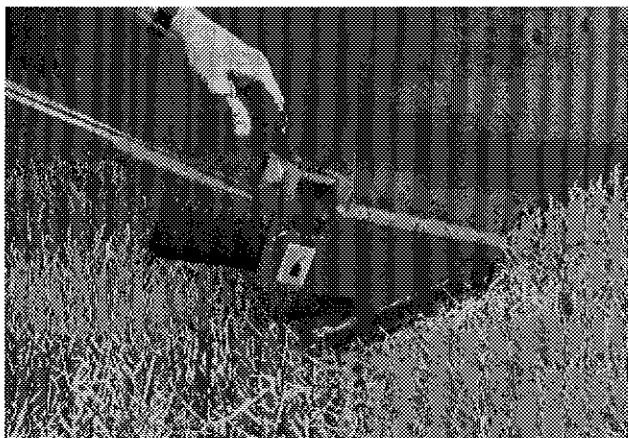


Figure 31

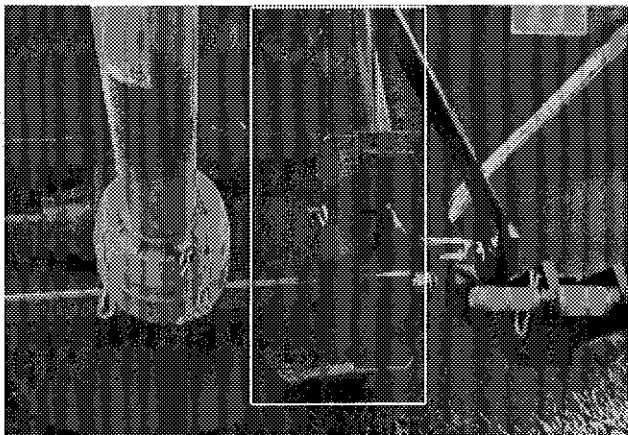


Figure 32



Figure 33

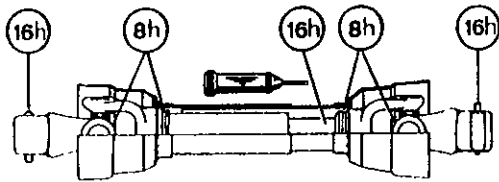
START-UP PROCEDURES

- 1) Check oil level in gearbox. Use S.A.E. W90 gear box oil.
- 2) Lubricate all points with a good quality multiuse grease.
- 3) Check chain take-up adjustment. A slight tension must be maintained.
- 4) Verify for adequate tightness of all fastening devices. Refer to torque chart on page 54.
- 5) Adjust skid shoes according to ground conditions (Fig. 31).
- 6) Following the installation of the Snowblower on the tractor, **do not forget** to lift the storage support (Fig. 32).
- 7) Make sure of a 540 RPM input to your snowblower.
- 8) Check impeller adjustment. The tip of the blades should be approximately 1/8" to 3/16" from the discharge wall of the drum. If necessary, adjust with the take-up screws provided (Fig. 33).

5

MAINTENANCE

- 1) Wipe off all grease fittings with a clean cloth before adding grease in order to avoid injecting dirt and sand.
- 2) Repair or replace damaged grease fittings.
- 3) Lubricate all grease fittings every 10 hours of operation.
- 4) Oil drive chain every 8 hours of operation.
- 5) Lubricate P.T.O. shaft as indicated below:



- 6) Check oil level in gear box once a month. If necessary add oil.

- 7) Check tension of drive chain every 25 hours of operation and adjust if necessary.
- 8) Check for tightness of bearing collars every 50 hours of operation.
- 9) Change gearbox oil once a year. Use gear box oil S.A.E. W90 rated API, class GL-5.
- 10) Check all nuts and bolts once a year. If necessary use torque chart on page 54.
- 11) Standard scraper blades are reversible. Reverse when one edge is worn out.
- 12) Always use Grade 5 shear bolts.

STORAGE

- 1) Store the Snowblower in a cool, dry place.
- 2) Support the Snowblower with wooden blocks.
- 3) Keep all piston rods in the retracted position. This will assure better protection against the elements.
- 4) Clean your Snowblower.
- 5) Thoroughly inspect all parts of the Snowblower. Replace or repair worn or defective parts.
- 6) Touch-up or repaint if necessary.
- 7) Lubricate all points before storage.

TROUBLESHOOTING

P.T.O. SHAFT

| PROBLEM | POSSIBLE CAUSE | CORRECTION |
|--|---|--|
| <ul style="list-style-type: none"> - Premature wear of U-joints and/ or bluish color of cross journals. | <ul style="list-style-type: none"> - Insufficient lubrication. - Excessive working angle. | <ul style="list-style-type: none"> - Follow lubrication recommendations. - Replace defective U-joints. - Make sure the snowblower inlet face is perpendicular to the ground and if possible readjust 3-point in order to position the snowblower further away from tractor. |
| <ul style="list-style-type: none"> - Gripping or premature wear of telescoping members. | <ul style="list-style-type: none"> - Too much sliding under load. - Tube overlap too-short: minimum recommended is 6". - Insufficient lubrication. - Contaminants (sand, etc.). | <ul style="list-style-type: none"> - Avoid raising snowblower while in operation. - Readjust 3-point in order to position the snowblower closer to the tractor. - Follow lubrication recommendations. - Replace defective telescopic members. |
| <ul style="list-style-type: none"> - Damaged or jammed locking pin or bolt. | <ul style="list-style-type: none"> - Pin or orifice contaminated by sand, ice, etc. - Telescoping members too long, exerting pressure on locking device. | <ul style="list-style-type: none"> - Clean and grease. - Readjust 3-point in order to position the snowblower further away from tractor. |
| <ul style="list-style-type: none"> - Premature wear of guard tube bearing ring. | <ul style="list-style-type: none"> - Lack of lubrication. - Wrong installation of guard chain. - Part of the guard in contact with the equipment. | <ul style="list-style-type: none"> - Follow lubrication instructions. - Adjust chain for non-interference between guard & equipment. - Replace worn or damaged bearing rings. |
| <ul style="list-style-type: none"> - Cut or deformed safety guard tubes. | <ul style="list-style-type: none"> - Tubes in contact with the equipment. | <ul style="list-style-type: none"> - Eliminate any interference between tubes and equipment or tractor. - Replace damaged tubes. |

TROUBLESHOOTING (cont'd)

SNOWBLOWER

| PROBLEM | POSSIBLE CAUSE | CORRECTION |
|---|--|---|
| - The snow is not being thrown as far as usual. | - Tractor RPM too low. - Gap too wide between impeller blade tip and drum outlet wall. - Insufficient tractor HP. | - Raise P.T.O. speed to a minimum of 540 RPM. - Adjust impeller blades closer to drum outlet (1/8" to 3/16"). - Reduce travel speed. |
| - Frequent plugging of discharge chute. | - Tractor RPM too low. - Tractor RPM reduced too early with snow still in the snowblower. - Slippage of PTO clutch mechanism. - Wet snow condition. | - Raise P.T.O. speed to a minimum of 540 RPM. - Make sure the snowblower is completely empty before reducing RPM, especially on tractors with foot controlled RPM. - Repair clutch. - Reduce travel speed. |
| - The impeller will not turn. | - Shear bolt broken on drive shaft. | - Replace shear bolt. |
| - The auger will not turn. | - Shear bolt broken on drive shaft. - Shear bolt broken on auger drive shaft. - Broken drive chain. | - Replace shear bolt. - Replace shear bolt. - Fix or replace chain. |
| - The rotating drum will not turn. | - Rotating drum shear bolt broken. - Ice accumulation. - Wrong hydraulic connections. | - Replace shear bolt. - Remove ice. - Check hydraulic connections. |
| - The chute will not turn. | - Ice accumulation. - Wrong hydraulic connections. - FOR CHUTE MECHANISM H-7486 - Broken shear bolt. | - Remove ice. - Check hydraulic connections. - FOR CHUTE MECHANISM H-7486 - Replace shear bolt. |

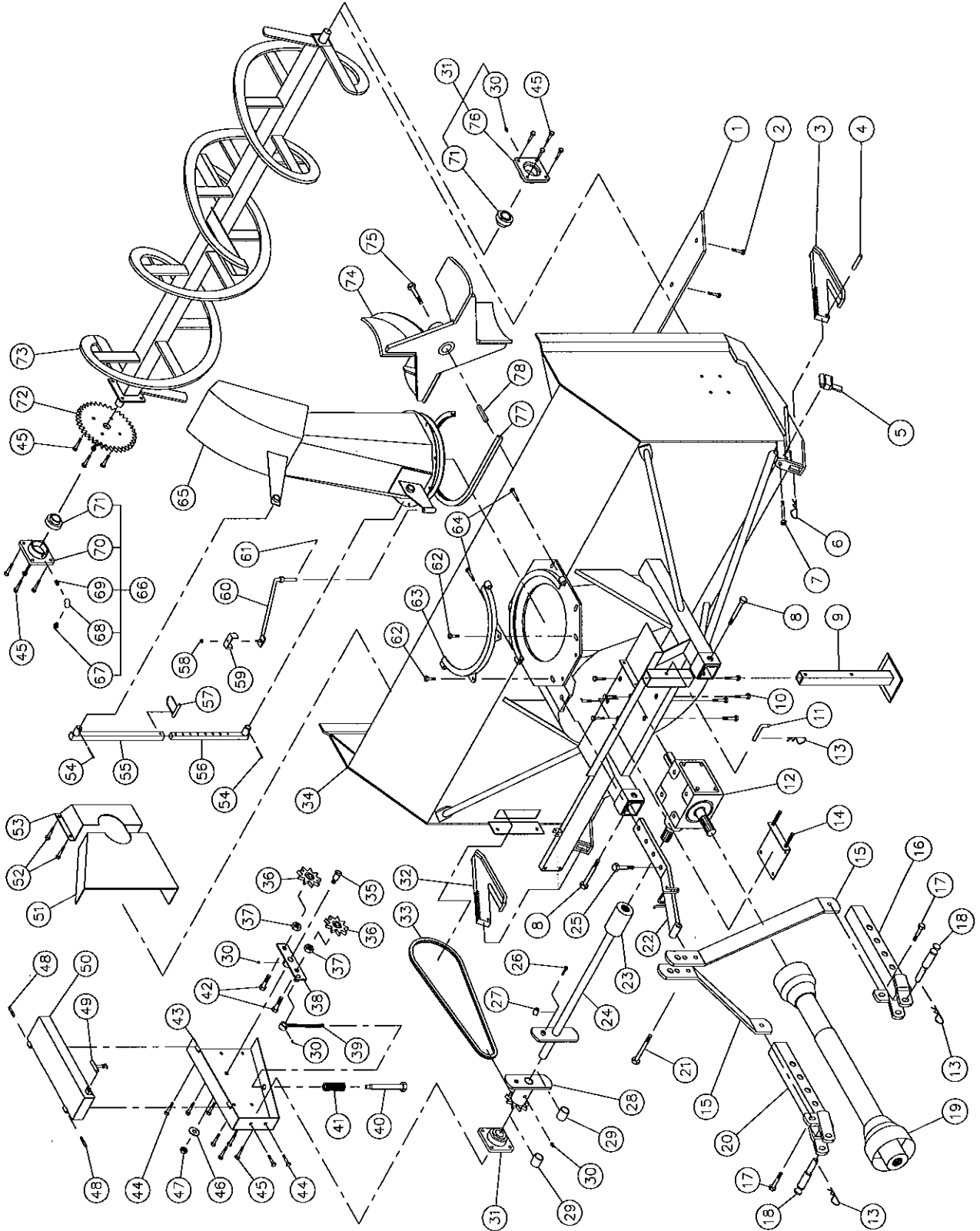
8

SPECIFICATIONS

| Snowblower model | | P-740 | P-740 TRC | P-800 | P-800 TRC | P-860 | P-860 TRC | P-862 | P-862 TRC | P-920 | P-920 TRC |
|--|-------------------------------|---------|-----------|---------|-----------|---------|-----------|--------|-----------|--------|-----------|
| Horse power recommended (HP) min - max | | 30-50 | 30-50 | 40-65 | 40-65 | 50-75 | 50-75 | 50-75 | 50-75 | 75-100 | 75-100 |
| Working width | (inches) | 74" | 74" | 80" | 80" | 86" | 86" | 86" | 86" | 92" | 92" |
| | (centimeters) | 188 | 188 | 203 | 203 | 218 | 218 | 218 | 218 | 234 | 234 |
| Cutting height | (inches) | 35" | 35" | 35" | 35" | 37" | 37" | 43" | 43" | 37" | 37" |
| | (centimeters) | 89 | 89 | 89 | 89 | 94 | 94 | 109 | 109 | 94 | 94 |
| Impeller diameter | (inches) | 26" | 26" | 26" | 26" | 28" | 28" | 28" | 28" | 30" | 30" |
| | (centimeters) | 66 | 66 | 66 | 66 | 71 | 71 | 71 | 71 | 76 | 76 |
| Depth of drum | (inches) | 12" | 12" | 12" | 12" | 12" | 12" | 12" | 12" | 12" | 12" |
| | (centimeters) | 30.5 | 30.5 | 30.5 | 30.5 | 30.5 | 30.5 | 30.5 | 30.5 | 30.5 | 30.5 |
| Impeller blades | | 4 | 4 | 4 | 4 | 4 | 4 | 4 | 4 | 5 | 5 |
| Size of impeller shaft | (inches) | 1 9/16" | 1 9/16" | 1 9/16" | 1 9/16" | 1 9/16" | 1 9/16" | 1 5/8" | 1 5/8" | 2" | 2" |
| | (centimeters) | 3.97 | 3.97 | 3.97 | 3.97 | 3.97 | 3.97 | 4.13 | 4.13 | 5.08 | 5.08 |
| Impeller RPM | | 540 | 540 | 540 | 540 | 540 | 540 | 540 | 540 | 540 | 540 |
| Number of augers | | 1 | 1 | 1 | 1 | 1 | 1 | 2 | 2 | 1 | 1 |
| Main auger diameter | (inches) | 23" | 23" | 23" | 23" | 23" | 23" | 23" | 23" | 23" | 23" |
| | (centimeters) | 58 | 58 | 58 | 58 | 58 | 58 | 58 | 58 | 58 | 58 |
| Upper auger 13" (33 cm) diameter | | - | - | - | - | - | - | Std. | Std. | - | - |
| Drive chain - main auger | | 80 | 80 | 80 | 80 | 80 | 80 | 80 | 80 | 80 | 80 |
| Oil bath sealed gear box | | Std. | Std. | Std. | Std. | Std. | Std. | Std. | Std. | Std. | Std. |
| Choice of chute rotation mechanism | Manual | Avail. | - | Avail. | - | Avail. | - | Avail. | - | Avail. | - |
| | Hydraulic C (cylinder) | Avail. | Avail. | Avail. | Avail. | Avail. | Avail. | Avail. | Avail. | Avail. | Avail. |
| | Hydraulic M (motor) | Avail. | Avail. | Avail. | Avail. | Avail. | Avail. | Avail. | Avail. | Avail. | Avail. |
| Number of shear bolt | | 2 | 3 | 2 | 3 | 2 | 3 | 2 | 3 | 2 | 3 |
| Heavy duty 3-point | | Opt. | Opt. | Opt. | Opt. | Opt. | Opt. | Opt. | Opt. | Std. | Std. |
| Hitch category | | 1 & 2 | 1 & 2 | 1 & 2 | 1 & 2 | 1 & 2 | 1 & 2 | 1 & 2 | 1 & 2 | 2 | 2 |
| Balanced impeller | | Std. | Std. | Std. | Std. | Std. | Std. | Std. | Std. | Std. | Std. |
| Balanced auger | | Std. | Std. | Std. | Std. | Std. | Std. | Std. | Std. | Std. | Std. |
| Drum rotation mechanism | Hydraulic C (cylinder) | - | Std. | - | Std. | - | Std. | - | Std. | - | Std. |
| | Hydraulic M (motor) | - | - | - | - | - | - | - | - | - | - |
| 1000 to 540 RPM reducer | | - | - | - | - | - | - | - | - | Opt. | - |
| Scraper blade | Steel - reversible | Std. | Std. | Std. | Std. | Std. | Std. | Std. | Std. | Std. | Std. |
| | Carbon steel - not reversible | Opt. | Opt. | Opt. | Opt. | Opt. | Opt. | Opt. | Opt. | Opt. | Opt. |
| Adjustable skid shoes | Steel - reversible | Std. | Std. | Std. | Std. | Std. | Std. | Std. | Std. | Std. | Std. |
| | Carbon steel | Opt. | Opt. | Opt. | Opt. | Opt. | Opt. | Opt. | Opt. | Opt. | Opt. |
| Full flight upper auger (industrial) | | Opt. | Opt. | Opt. | Opt. | Opt. | Opt. | Opt. | Opt. | Opt. | Opt. |
| Semi-industrial chute | | Opt. | Opt. | Opt. | Opt. | Opt. | Opt. | Opt. | Opt. | Opt. | Opt. |
| Industrial chute | | Opt. | Opt. | Opt. | Opt. | Opt. | Opt. | Opt. | Opt. | Opt. | Opt. |
| 24" (61 cm) chute extension | | Opt. | Opt. | Opt. | Opt. | Opt. | Opt. | Opt. | Opt. | Opt. | Opt. |
| 48" (122 cm) chute extension | | Opt. | Opt. | Opt. | Opt. | Opt. | Opt. | Opt. | Opt. | Opt. | Opt. |
| Choice of deflector adjustment | Rod and tube | Avail. | Avail. | Avail. | Avail. | Avail. | Avail. | Avail. | Avail. | Avail. | Avail. |
| | Cylinder | Avail. | Avail. | Avail. | Avail. | Avail. | Avail. | Avail. | Avail. | Avail. | Avail. |
| Bearing / ductile iron casing | | Std. | Std. | Std. | Std. | Std. | Std. | Std. | Std. | Std. | Std. |
| Height - Impeller center | (inches) | 16½" | 16½" | 16½" | 16½" | 17½" | 17½" | 17½" | 17½" | 18½" | 18½" |
| | (centimeters) | 41.9 | 41.9 | 41.9 | 41.9 | 44.5 | 44.5 | 44.5 | 44.5 | 47.0 | 47.0 |
| Lateral blades | | Opt. | Opt. | Opt. | Opt. | Opt. | Opt. | Opt. | Opt. | Opt. | Opt. |
| P.T.O. shaft (standard) | | No. 5 | No. 5 | No. 5 | No. 5 | No. 6 | No. 6 | No. 6 | No. 6 | No. 8 | No. 8 |
| P.T.O. shaft (optional) | | - | - | - | - | - | - | - | - | No. 10 | No. 10 |
| Weight (approx.) | (lbs) | 1160 | 1330 | 1202 | 1372 | 1259 | 1432 | 1440 | 1609 | 1650 | 1800 |
| | (kg) | 522 | 599 | 541 | 617 | 567 | 644 | 648 | 724 | 748 | 816 |

Specifications subject to change without notice.

SNOWBLOWERS P-740 P-800 P-860



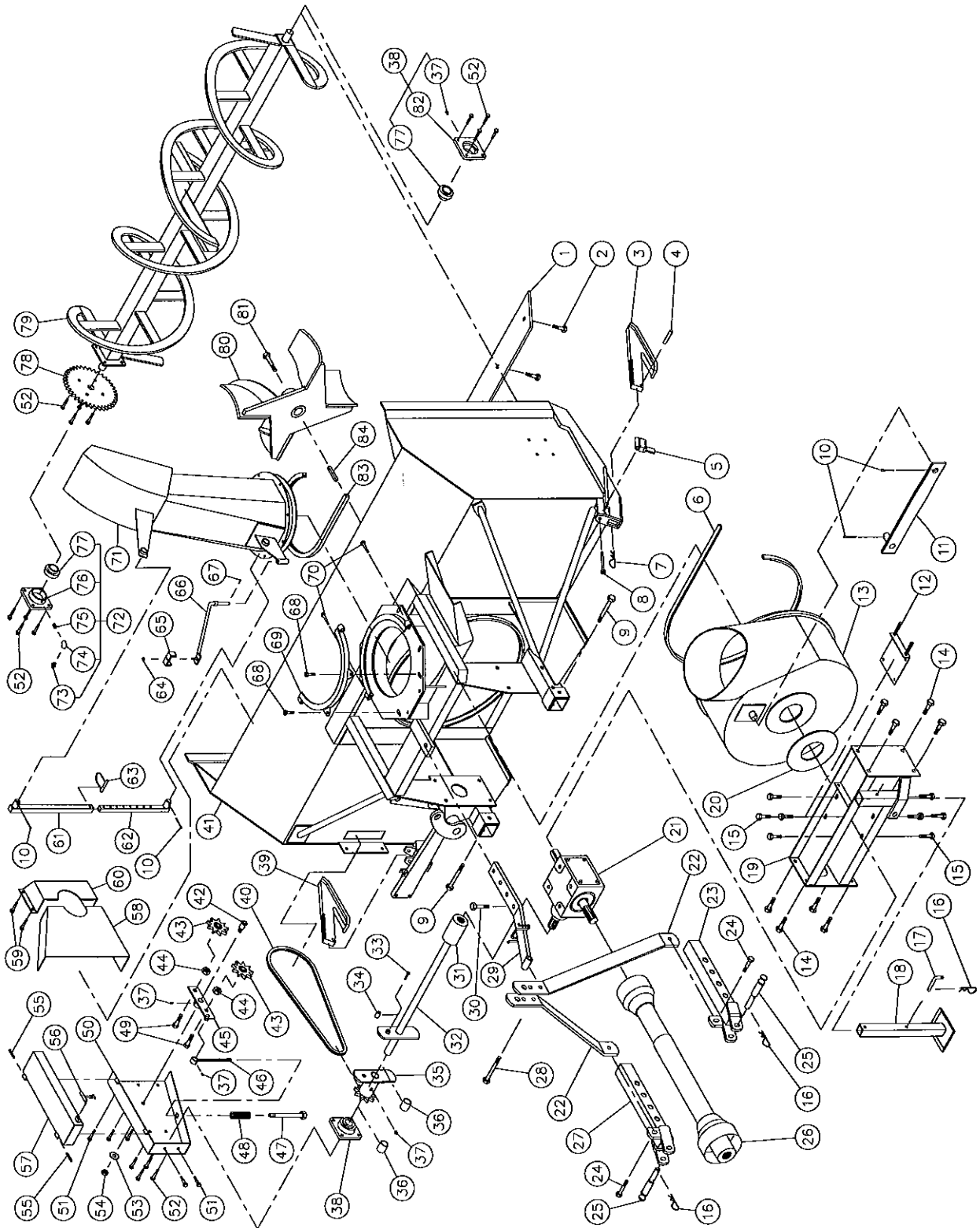
SNOWBLOWERS P-740 P-800 P-860 (cont'd)

| REF. | PART # | DESCRIPTION | QTY | | |
|------|-----------|---|-------|-------|-------|
| | | | P-740 | P-800 | P-860 |
| 1 | 140-00921 | Reversible scraper blade 3/8" x 4" x 67½" lg..... | 1 | - | - |
| 1 | 140-00931 | Reversible scraper blade 3/8" x 4" x 73½" lg..... | - | 1 | - |
| 1 | 140-00911 | Reversible scraper blade 3/8" x 4" x 79½" lg..... | - | - | 1 |
| 2 | 125-0715 | Plow bolt 7/16" x 1½" lg + nut & lock washer..... | 7 | 8 | 8 |
| 3 | 110-01841 | Skid shoe (right side)..... | 1 | 1 | 1 |
| 4 | Std. | Roll pin ¼" x 1½" lg..... | 2 | 2 | 2 |
| 5 | 8162 | Skid shoes lock..... | 2 | 2 | 2 |
| 6 | 8111 | Hitch pin clip 5/32" (CP-93H)..... | 2 | 2 | 2 |
| 7 | Std. | Bolt ½" NC x 4" lg + lock nut..... | 2 | 2 | 2 |
| 8 | Std. | Bolt 5/8" NC x 4½" lg + nylon lock nut..... | 2 | 2 | 2 |
| 9 | 8219 | Storage support..... | 1 | 1 | 1 |
| 10 | Std. | Bolt ½" NC x 1" lg +lock washer + 4 flat washers..... | 8 | 8 | 8 |
| 11 | 8220 | Storage support pin..... | 1 | 1 | 1 |
| 12 | 8251 | Gear box T27D..... | 1 | 1 | 1 |
| 13 | Std. | Hitch pin clip 5/32"..... | 3 | 3 | 3 |
| 14 | 8199 | Adjustment plate for gear box + 4 nuts 1/2" NC..... | 1 | 1 | 1 |
| 15 | 8005 | 3-points side bar..... | 2 | 2 | - |
| 15 | 8036 | 3-points side bar..... | - | - | 2 |
| 16 | 8936 | Right lower hitch..... | 1 | 1 | 1 |
| 17 | Std. | Bolt 5/8" NC x 2" lg + nylon lock nut..... | 2 | 2 | 2 |
| 18 | 8004 | Pin category 1 & 2..... | 2 | 2 | 2 |
| 19 | 8114-EG | P.T.O. shaft..... | 1 | 1 | - |
| 19 | 8202 | P.T.O. shaft..... | - | - | 1 |
| 20 | 8935 | Left lower hitch..... | 1 | 1 | 1 |
| 21 | Std. | Bolt 3/4" NC x 4½" lg + nylon lock nut..... | 1 | 1 | 1 |
| 22 | 8016 | Upper hitch..... | 1 | 1 | - |
| 22 | 8182 | Upper hitch..... | - | - | 1 |
| 23 | 6466 | Splined adaptor 1¼"-19 (welded)..... | 1 | 1 | 1 |
| 24 | 8006 | Auger drive shaft 26 7/16" lg overall (includes no. 23 and 27)..... | 1 | - | - |
| 24 | 8007 | Auger drive shaft 29 7/16" lg overall (includes no. 23 and 27)..... | - | 1 | - |
| 24 | 8008 | Auger drive shaft 32 7/16" lg overall (includes no. 23 and 27)..... | - | - | 1 |
| 25 | Std. | Bolt 3/4" NC x 2½" lg + nylon lock nut..... | 1 | 1 | 1 |
| 26 | Std. | Bolt 1/4" NC x 2" lg + nylon lock nut..... | 1 | 1 | 1 |
| 27 | 8164 | Bushing ¼" i.d. x ¾" o.d. x ¾" lg (welded)..... | 2 | 2 | 2 |
| 28 | 8184 | Sprocket #80 + shearplate..... | 1 | 1 | 1 |
| 29 | 8009 | Brass bushing 1¼" i.d. x 1½" o.d. x 1 3/16" lg..... | 2 | 2 | 2 |
| 30 | Std. | Grease fitting ¼"-28 straight..... | 5 | 5 | 5 |
| 31 | 8011 | Bearing 1¼" + flange..... | 2 | 2 | 2 |
| 32 | 110-01141 | Skid shoe (left side)..... | 1 | 1 | 1 |
| 33 | 8188 | Chain #80 x 75¾" lg..... | 1 | 1 | 1 |
| 34 | --- | Frame P-740..... | 1 | - | - |
| 34 | --- | Frame P-800..... | - | 1 | - |
| 34 | --- | Frame P-860..... | - | - | 1 |
| 35 | 150-00381 | Idler clevis pin..... | 1 | 1 | 1 |
| 36 | 9287 | Idler sprocket #80 (steel)..... | 2 | 2 | 2 |
| 37 | Std. | Nut 7/8" NC..... | 2 | 2 | 2 |
| 38 | 110-01211 | Idler..... | 1 | 1 | 1 |
| 39 | 110-01231 | Threaded rod for idler adjustment + nut 7/16" NC..... | 1 | 1 | 1 |

SNOWBLOWERS P-740 P-800 P-860 (cont'd)

| REF. | PART # | DESCRIPTION | QTY | | |
|------|-----------|--|-------|-------|-------|
| | | | P-740 | P-800 | P-860 |
| 40 | 110-01221 | Threaded tube for idler adjustment | 1 | 1 | 1 |
| 41 | 9473 | Compression spring | 1 | 1 | 1 |
| 42 | Std. | Bolt 3/4" NC x 2 1/2" lg + écrou à blocage de nylon | 2 | 2 | 2 |
| 43 | 110-01851 | Chain guard | 1 | 1 | 1 |
| 44 | Std. | Bolt 7/16" NC x 1" lg + nylon lock nut | 5 | 5 | 5 |
| 45 | Std. | Bolt 7/16" NC x 1 1/2" lg + nylon lock nut | 16 | 16 | 16 |
| 46 | Std. | Flat washer 5/8" | 1 | 1 | 1 |
| 47 | Std. | Nut 5/8" NC | 1 | 1 | 1 |
| 48 | Std. | Roll pin 5/16" x 2" lg | 2 | 2 | 2 |
| 49 | 8125 | Rubber fastener | 1 | 1 | 1 |
| 50 | 110-01271 | Chain guard cover | 1 | 1 | 1 |
| 51 | 130-02001 | Inside guard (welded) | 1 | 1 | 1 |
| 52 | Std. | Bolt 3/8" NC x 1" lg + nylon lock nut | 4 | 4 | 4 |
| 53 | 8018 | Inside guard (bolted) | 1 | 1 | 1 |
| 54 | Std. | 2 hairpin cotter 5/32" x 2" lg | opt. | opt. | opt. |
| 55 | 8146 | Chute adjusting tube | opt. | opt. | opt. |
| 56 | 8145 | Chute adjusting rod | opt. | opt. | opt. |
| 57 | 8112 | Lock pin 1/4" | opt. | opt. | opt. |
| 58 | Std. | Nylon locknut 5/16" NC | 1 | 1 | 1 |
| 59 | 140-00881 | Hoses mounting plate | 1 | 1 | 1 |
| 60 | 110-01111 | Mounting support plate | 1 | 1 | 1 |
| 61 | Std. | Cotter pin 1/8" x 1" | 1 | 1 | 1 |
| 62 | Std. | Bolt 1/2" NC x 1 3/4" lg + nylon locknut & flat washer | 2 | 2 | 2 |
| 63 | 110-01341 | Retaining bracket | 1 | 1 | 1 |
| 64 | Std. | Bolt 7/16" NC x 3" lg + nylon locknut | 2 | 2 | 2 |
| 65 | 110-01861 | Chute | 1 | 1 | 1 |
| 66 | 8011-C | Bearing 1 1/4" + flange + elbow grease fitting | 1 | 1 | 1 |
| 67 | Std. | Grease fitting 1/8"-NPT straight | 1 | 1 | 1 |
| 68 | 8226 | Elbow 90° 1/8"-NPT | 1 | 1 | 1 |
| 69 | 8227 | Straight joint 1/8"-NPT | 1 | 1 | 1 |
| 70 | 8166-M | Modified flange | 1 | 1 | 1 |
| 71 | 8165 | Bearing 1 1/4" UC207-20 | 3 | 3 | 3 |
| 72 | 8185 | Sprocket 80A30 T 1 1/4" ø | 1 | 1 | 1 |
| 73 | 8023 | Auger P-740 | 1 | - | - |
| 73 | 8024 | Auger P-800 | - | 1 | - |
| 73 | 8025 | Auger P-860 | - | - | 1 |
| 74 | 110-01871 | Impeller 26" ø 4 blades | 1 | 1 | - |
| 74 | 110-01881 | Impeller 28" ø 4 blades | - | - | 1 |
| 75 | 8228 | Impeller cap screw 5/8" x 2" + lock washer | 1 | 1 | 1 |
| 76 | 8166 | Flange F207 | 2 | 2 | 2 |
| 77 | 8149 | U-shaped UHMW ± 14" i. d. | 1 | 1 | 1 |
| 78 | 8030 | Square key 3/8" x 3/8" x 3 1/2" lg | 1 | 1 | 1 |

SNOWBLOWERS P-740TRC P-800TRC P-860TRC



10

SNOWBLOWERS P-740TRC P-800TRC P-860TRC (cont'd)

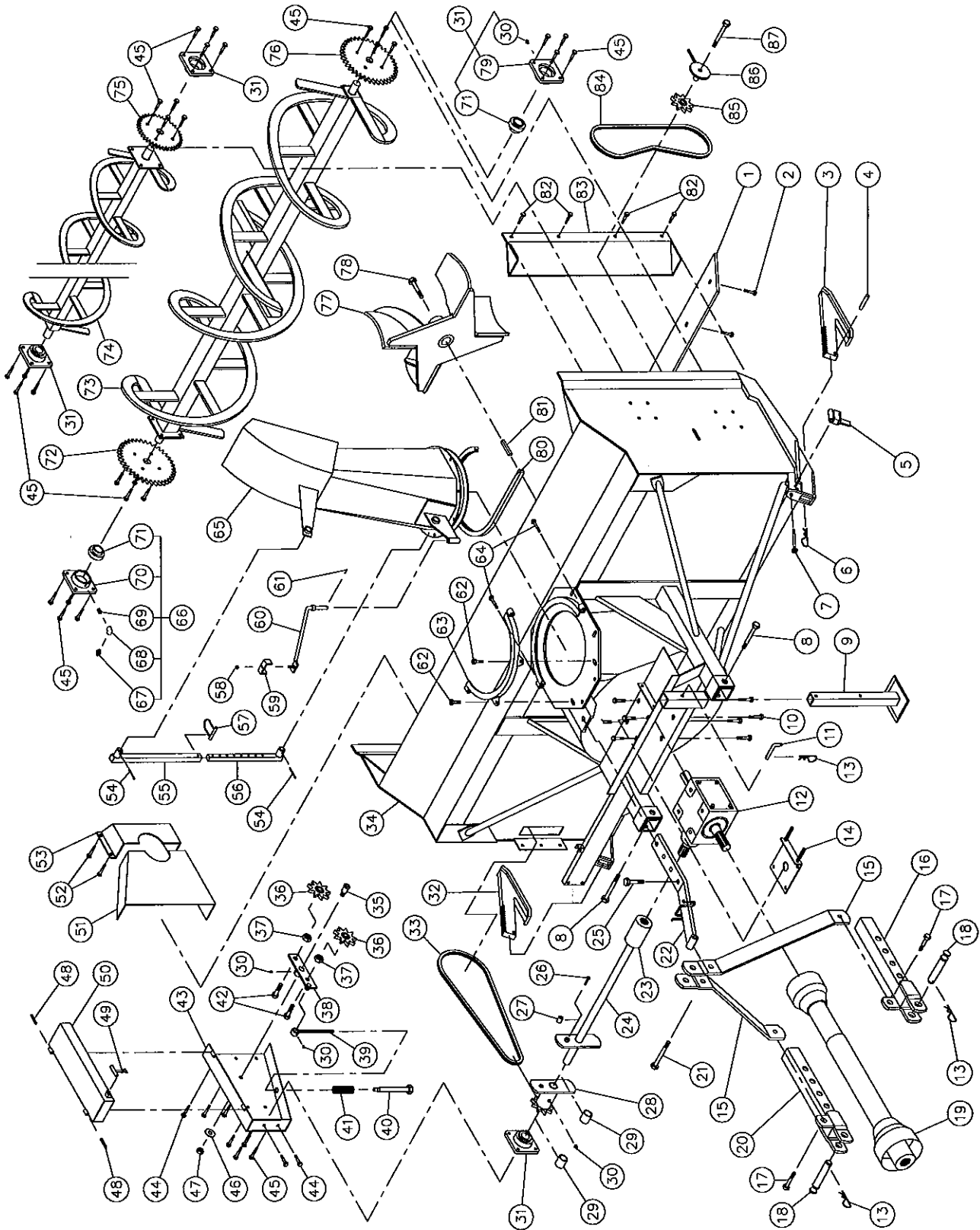
| REF. | PART # | DESCRIPTION | QTY | | |
|------|-----------|--|----------|----------|----------|
| | | | P-740TRC | P-800TRC | P-860TRC |
| 1 | 140-00921 | Reversible scraper blade 3/8" x 4" x 67½" lg | 1 | - | - |
| 1 | 140-00931 | Reversible scraper blade 3/8" x 4" x 73½" lg | - | 1 | - |
| 1 | 140-00911 | Reversible scraper blade 3/8" x 4" x 79½" lg | - | - | 1 |
| 2 | 125-0715 | Plow bolt 7/16" NC x 1½" lg + nut & lock washer | 7 | 8 | 8 |
| 3 | 110-01841 | Skid shoe (right side) | 1 | 1 | 1 |
| 4 | Std. | Roll pin ¼" x 1½" lg | 2 | 2 | 2 |
| 5 | 8162 | Skid shoes lock | 2 | 2 | 2 |
| 6 | 8195 | U-shaped UHMW 3/8" x 7/8" x 84 5/8" lg | 1 | 1 | - |
| 6 | 8196 | U-shaped UHMW 3/8" x 7/8" x 91" lg | - | - | 1 |
| 7 | 8111 | Hitch pin clip 5/32" (CP-93H) | 2 | 2 | 2 |
| 8 | Std. | Bolt 1/2" NC x 4" lg + lock nut | 2 | 2 | 2 |
| 9 | Std. | Bolt 5/8" NC x 4 1/2" lg + nylon lock nut | 2 | 2 | 2 |
| 10 | Std. | Cotter pin 5/32" x 2" lg | 4 | 4 | 4 |
| 11 | 8037 | Connecting rod ½" x 2" x 21" lg | 1 | 1 | - |
| 11 | 8229 | Connecting rod ½" x 2" x 22" lg | - | - | 1 |
| 12 | 8199 | Adjustment plate for gear box + 4 nuts ½" NC | 1 | 1 | 1 |
| 13 | 8197 | Rotary drum 26" ø | 1 | 1 | - |
| 13 | 8198 | Rotary drum 28" ø | - | - | 1 |
| 14 | Std. | Bolt 5/8" NC x 1½" lg + nylon lock nut | 8 | 8 | 8 |
| 15 | Std. | Bolt ½" NC x 1" lg + lockwasher + 4 flat washers | 8 | 8 | 8 |
| 16 | Std. | Hitch pin clip 5/32" | 3 | 3 | 3 |
| 17 | 8220 | Storage support pin | 1 | 1 | 1 |
| 18 | 8219 | Storage support | 1 | 1 | 1 |
| 19 | 8230 | Gear box support | 1 | 1 | - |
| 19 | 8231 | Gear box support | - | - | 1 |
| 20 | 8232 | UHMW flat washer 1/8" x 4 5/8" i.d. x 8 1/8" o.d. | 1 | 1 | 1 |
| 21 | 8251 | Gear box T-27D | 1 | 1 | 1 |
| 22 | 8036 | 3-points side bar | 2 | 2 | - |
| 22 | 8180 | 3-points side bar | - | - | 2 |
| 23 | 8936 | Right lower hitch | 1 | 1 | 1 |
| 24 | Std. | Bolt 5/8" NC x 2" lg + nylon lock nut | 2 | 2 | 2 |
| 25 | 8004 | Pin category 1 & 2 | 2 | 2 | 2 |
| 26 | 8114-EG | P.T.O. shaft | 1 | 1 | - |
| 26 | 8202 | P.T.O. shaft | - | - | 1 |
| 27 | 8935 | Left lower hitch | 1 | 1 | 1 |
| 28 | Std. | Bolt 3/4" NC x 4 1/2" lg + nylon lock nut | 1 | 1 | 1 |
| 29 | 8042 | Upper hitch | 1 | 1 | - |
| 29 | 8233 | Upper hitch | - | - | 1 |
| 30 | Std. | Bolt 3/4" NC x 2½" lg + nylon lock nut | 1 | 1 | 1 |
| 31 | 6466 | Splined adaptor 1 ¼" - 19 (welded) | 1 | 1 | 1 |
| 32 | 8006 | Auger drive shaft 26 7/16" lg overall (includes no. 31 and 34) | 1 | - | - |
| 32 | 8007 | Auger drive shaft 29 7/16" lg overall (includes no. 31 and 34) | - | 1 | - |
| 32 | 8008 | Auger drive shaft 32 7/16" lg overall (includes no. 31 and 34) | - | - | 1 |
| 33 | Std. | Bolt 1/4" NC x 2" lg + nylon lock nut | 1 | 1 | 1 |
| 34 | 8164 | Bushing 1/4" i.d. x 3/4" o.d. x 3/4" lg (welded) | 2 | 2 | 2 |
| 35 | 8184 | Sprocket #80 + shearplate | 1 | 1 | 1 |
| 36 | 8009 | Brass bushing 1 1/4" i.d. x 1 1/2" o.d. x 1 3/16" lg | 2 | 2 | 2 |
| 37 | Std. | Grease fitting 1/4"-28 straight | 5 | 5 | 5 |
| 38 | 8011 | Bearing 1 1/4" + flange | 2 | 2 | 2 |
| 39 | 110-01141 | Skid shoe (left side) | 1 | 1 | 1 |
| 40 | 8188 | Chain #80 x 75¾"lg | 1 | 1 | 1 |
| 41 | --- | Frame P-740TRC | 1 | - | - |

SNOWBLOWERS P-740TRC P-800TRC P-860TRC (cont'd)

| REF. | PART # | DESCRIPTION | QTY | | |
|------|-----------|---|----------|----------|----------|
| | | | P-740TRC | P-800TRC | P-860TRC |
| 41 | --- | Frame P-800TRC | - | 1 | - |
| 41 | --- | Frame P-860TRC | - | - | 1 |
| 42 | 150-00381 | Idler clevis pin | 1 | 1 | 1 |
| 43 | 9287 | Idler sprocket #80 | 2 | 2 | 2 |
| 44 | Std. | Nut 7/8" NC | 2 | 2 | 2 |
| 45 | 110-01211 | Idler | 1 | 1 | 1 |
| 46 | 110-01231 | Threaded rod for idler adjustment + nut 7/16" NC | 1 | 1 | 1 |
| 47 | 110-01221 | Threaded tube for idler adjustment | 1 | 1 | 1 |
| 48 | 9473 | Compression spring | 1 | 1 | 1 |
| 49 | Std. | Bolt 3/4" NC x 2 1/2" lg + écrou à blocage de nylon | 2 | 2 | 2 |
| 50 | 110-01851 | Chain guard | 1 | 1 | 1 |
| 51 | Std. | Bolt 7/16" NC x 1" lg + nylon lock nut | 5 | 5 | 5 |
| 52 | Std. | Bolt 7/16" NC x 1 1/2" lg + nylon lock nut | 16 | 16 | 16 |
| 53 | Std. | Flat washer 5/8" | 1 | 1 | 1 |
| 54 | Std. | Nut 5/8" NC | 1 | 1 | 1 |
| 55 | Std. | Roll pin 5/16" x 2" lg | 2 | 2 | 2 |
| 56 | 8125 | Rubber fastener | 1 | 1 | 1 |
| 57 | 110-01421 | Chain guard cover | 1 | 1 | 1 |
| 58 | 130-02001 | Inside guard (welded) | 1 | 1 | 1 |
| 59 | Std. | Bolt 3/8" NC x 1" lg + nylon locknut | 4 | 4 | 4 |
| 60 | 8018 | Inside guard (bolted) | 1 | 1 | 1 |
| 61 | 8146 | Chute adjusting tube | opt. | opt. | opt. |
| 62 | 8145 | Chute adjusting rod | opt. | opt. | opt. |
| 63 | 8112 | Lock pin 1/4" | opt. | opt. | opt. |
| 64 | Std. | Nylon locknut 5/16" NC | 1 | 1 | 1 |
| 65 | 140-00881 | Hoses mounting plate | 1 | 1 | 1 |
| 66 | 110-01111 | Mounting support plate | 1 | 1 | 1 |
| 67 | Std. | Cotter pin 1/8" x 1" | 1 | 1 | 1 |
| 68 | Std. | Bolt 1/2" NC x 1 3/4" lg + nylon locknut & flat washer | 2 | 2 | 2 |
| 69 | 110-01341 | Retaining bracket | 1 | 1 | 1 |
| 70 | Std. | Bolt 7/16" NC x 3" lg + nylon locknut | 2 | 2 | 2 |
| 71 | 110-01861 | Chute | 1 | 1 | 1 |
| 72 | 8011-C | Bearing 1 1/4" + flange | 1 | 1 | 1 |
| 73 | Std. | Grease fitting 1/8"-NPT straight | 1 | 1 | 1 |
| 74 | 8226 | Elbow 90° 1/8"-NPT | 1 | 1 | 1 |
| 75 | 8227 | Straight joint 1/8"-NPT | 1 | 1 | 1 |
| 76 | 8166-M | Modified flange | 1 | 1 | 1 |
| 77 | 8165 | Bearing 1 1/4" | 3 | 3 | 3 |
| 78 | 8185 | Sprocket 80A30 T 1 1/4" ø | 1 | 1 | 1 |
| 79 | 8023 | Auger P-740 | 1 | - | - |
| 79 | 8024 | Auger P-800 | - | 1 | - |
| 79 | 8025 | Auger P-860 | - | - | 1 |
| 80 | 110-01871 | Impeller 26" ø 4 blades | 1 | 1 | - |
| 80 | 110-01881 | Impeller 28" ø 4 blades | - | - | 1 |
| 81 | 8228 | Impeller cap screw 5/8" NC x 1 1/2" lg + lock washer | 1 | 1 | 1 |
| 82 | 8166 | Flange F207 | 2 | 2 | 2 |
| 83 | 8149 | U-shaped UHMW ± 14" i. d. | 1 | 1 | 1 |
| 84 | 8030 | Square key 3/8" x 3/8" x 3 1/2" lg | 1 | 1 | 1 |
| NI* | Std. | Rotary drum safety shear bolt 3/8" NC x 2" lg + nylon locknut | 1 | 1 | 1 |

*NI = NOT ILLUSTRATED

SNOWBLOWER P-862



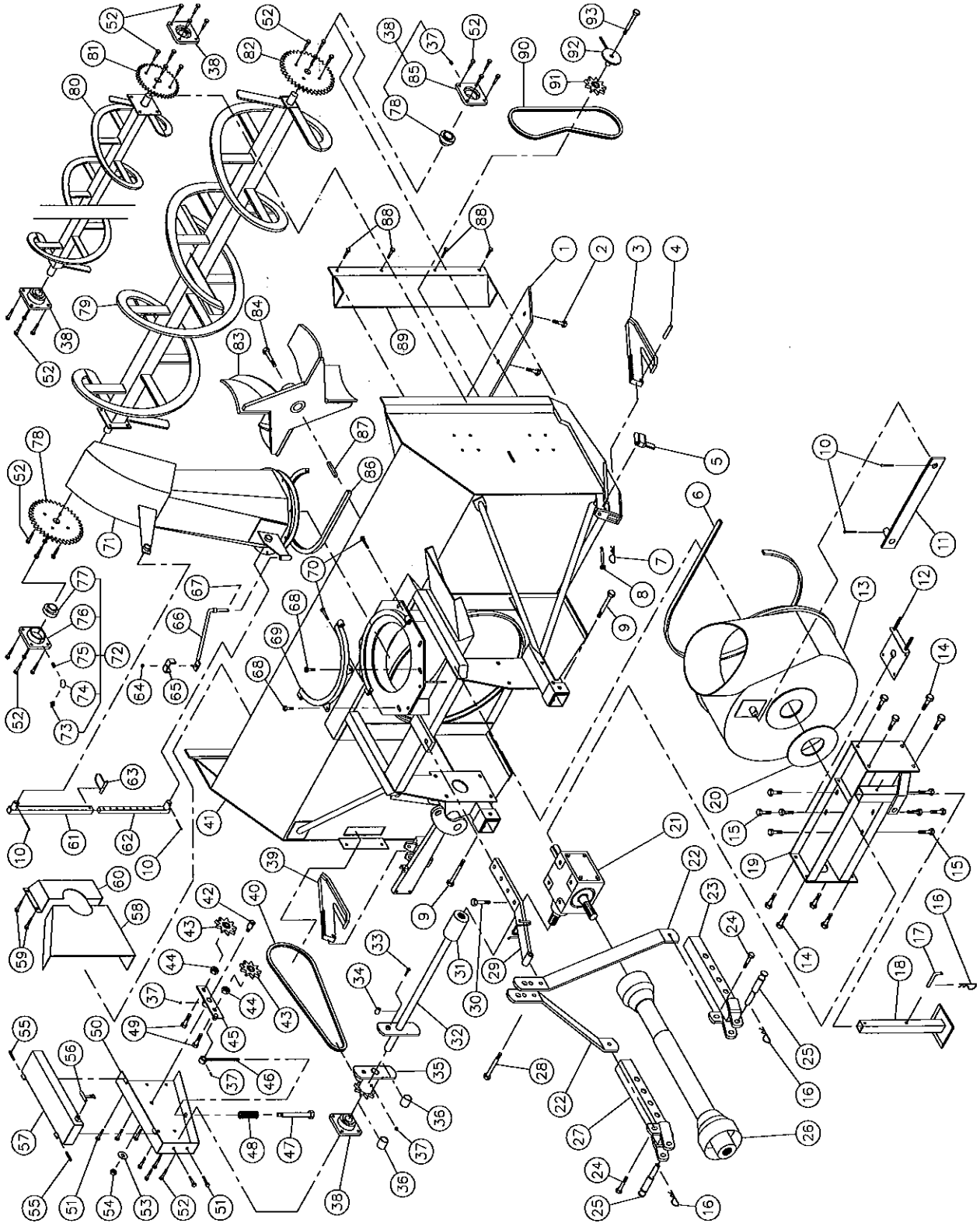
SNOWBLOWER P-862 (cont'd)

| REF. | PART # | DESCRIPTION | QTY |
|------|-----------|--|-----|
| 1 | 140-00911 | Reversible scraper blade 3/8" x 4" x 79½" lg | 1 |
| 2 | 125-0715 | Plow bolt 7/16" NC x 1½" lg + nut & lock washer | 8 |
| 3 | 110-01841 | Skid shoe (right side) | 1 |
| 4 | Std. | Roll pin ¼" x 1½" lg | 2 |
| 5 | 8162 | Skid shoes lock | 2 |
| 6 | 8111 | Hitch pin clip 5/32" (CP-93H) | 2 |
| 7 | Std. | Bolt ½" NC x 4" lg + lock nut | 2 |
| 8 | Std. | Bolt 5/8" NC x 4½" lg + nylon locknut | 2 |
| 9 | 8219 | Storage support | 1 |
| 10 | Std. | Bolt ½" NC x 1" lg + lock washer + 4 flat washers | 8 |
| 11 | 8220 | Storage support pin | 1 |
| 12 | 8270 | Gear box | 1 |
| 13 | Std. | Hitch pin clip 5/32" | 3 |
| 14 | 110-02081 | Adjustment plate for gear box + 4 nuts 1/2" NC | 1 |
| 15 | 8036 | 3-points side bar | 2 |
| 16 | 8936 | Right lower hitch | 1 |
| 17 | Std. | Bolt 5/8" NC x 2" lg + nylon locknut | 2 |
| 18 | 8004 | Pin category 1 & 2 | 2 |
| 19 | 8202 | P.T.O. shaft | 1 |
| 20 | 8935 | Left lower hitch | 1 |
| 21 | Std. | Bolt 3/4" NC x 4½" lg + nylon locknut | 1 |
| 22 | 8182 | Upper hitch | 1 |
| 23 | 6466 | Splined adaptor 1¼" - 19 (welded) | 1 |
| 24 | 8008 | Auger drive shaft 32 7/16" lg overall (includes no. 23 and 27) | 1 |
| 25 | Std. | Bolt 3/4" NC x 2½" lg + nylon locknut | 1 |
| 26 | Std. | Bolt 1/4" NC x 2" lg + nylon locknut | 1 |
| 27 | 8164 | Bushing ¼" i.d. x ¾" o.d. x ¾" lg (welded) | 2 |
| 28 | 8184 | Sprocket #80 + shearplate | 1 |
| 29 | 8009 | Brass bushing 1¼" i.d. x 1½" o.d. x 1 3/16" lg | 2 |
| 30 | Std. | Grease fitting ¼"-28 straight | 5 |
| 31 | 8011 | Bearing 1¼" + flange | 4 |
| 32 | 110-01141 | Skid shoe (left side) | 1 |
| 33 | 8188 | Chain # 80 x 75¾" lg | 1 |
| 34 | - - - | Frame P-862 | 1 |
| 35 | 150-00381 | Idler clevis pin | 1 |
| 36 | 9287 | Idler sprocket #80 | 2 |
| 37 | Std. | Nut 7/8" NC | 2 |
| 38 | 110-01211 | Idler | 1 |
| 39 | 110-01231 | Threaded rod for idler adjustment + nut 7/16" NC | 1 |
| 40 | 110-01221 | Threaded tube for idler adjustment | 1 |
| 41 | 9473 | Compression spring | 1 |
| 42 | Std. | Bolt 3/4" NC x 2 1/2" lg + écrou à blocage de nylon | 2 |
| 43 | 110-01851 | Chain guard | 1 |
| 44 | Std. | Bolt 7/16" NC x 1" lg + nylon locknut | 5 |
| 45 | Std. | Bolt 7/16" NC x 1½" lg + nylon locknut | 32 |
| 46 | Std. | Flat washer 5/8" | 1 |
| 47 | Std. | Nut 5/8" NC | 1 |
| 48 | Std. | Goupille à ressort 5/16" x 2" lg | 2 |
| 49 | 8125 | Rubber fastener | 1 |
| 50 | 110-01271 | Chain guard cover | 1 |
| 51 | 130-02001 | Inside guard (welded) | 1 |

SNOWBLOWER P-862 (cont'd)

| REF. | PART # | DESCRIPTION | QTY |
|------|-----------|--|------|
| 52 | Std. | Bolt 3/8" NC x 1" lg + nylon locknut | 4 |
| 53 | 8018 | Inside guard (bolted) | 1 |
| 54 | Std. | 2 hairpin cotter 5/32" x 2" lg | opt. |
| 55 | 8146 | Chute adjusting tube | opt. |
| 56 | 8145 | Chute adjusting rod | opt. |
| 57 | 8112 | Lock pin 1/4" | opt. |
| 58 | Std. | Nylon locknut 5/16" NC | 1 |
| 59 | 140-00881 | Hoses mounting plate | 1 |
| 60 | 110-01111 | Mounting support plate | 1 |
| 61 | Std. | Cotter pin 1/8" x 1" | 1 |
| 62 | Std. | Bolt 1/2" NC x 1 3/4" lg + nylon locknut & flat washer | 2 |
| 63 | 110-01341 | Retaining bracket | 1 |
| 64 | Std. | Bolt 7/16" NC x 3"lg + nylon locknut | 2 |
| 65 | 110-01861 | Chute | 1 |
| 66 | 8011-C | Bearing 1 1/4" + flange + elbow grease fitting | 1 |
| 67 | Std. | Grease fitting 1/8"-NPT straight | 1 |
| 68 | 8226 | Elbow 90° 1/8"-NPT | 1 |
| 69 | 8227 | Straight joint 1/8"-NPT | 1 |
| 70 | 8166-M | Modified flange F207 | 1 |
| 71 | 8165 | Bearing 1 1/4" UC207-20 | 5 |
| 72 | 8185 | Roue à dents 80A30 T 1 1/4" ø | 1 |
| 73 | 8139 | Lower auger P-862 | 1 |
| 74 | 8134 | Upper auger P-862 | 1 |
| 75 | 8144 | Sprocket 60A30 T 1 1/4" ø | 1 |
| 76 | 8021 | Sprocket 60A38 T 1 1/4" ø | 1 |
| 77 | 110-01891 | Impeller 28" ø 4 blades | 1 |
| 78 | 8228 | Impeller cap screw 5/8" NC x 2" + lock washer | 1 |
| 79 | 8166 | Flange F207 | 4 |
| 80 | 8149 | U-shaped UHMW ± 14" i. d. | 1 |
| 81 | 8030 | Square key 3/8" x 3/8" x 3 1/2" lg | 1 |
| 82 | Std. | Bolt 7/16" NC x 1" lg + nylon locknut | 4 |
| 83 | 8135 | Drive chain guard (upper auger) | 1 |
| 84 | 8141 | Chain #60 x 65" lg | 1 |
| 85 | 8186 | Idler sprocket #60 | 1 |
| 86 | 8136 | Idler for upper auger (hole 1/2") + 2 nuts 1/2" NC | 1 |
| 87 | Std. | Bolt 1/2" NC x 3 1/2" lg + nylon locknut & flat washer | 1 |

SNOWBLOWER P-862TRC



10

SNOWBLOWER P-862TRC (cont'd)

| REF. | PART # | DESCRIPTION | QTY |
|------|-----------|--|-----|
| 1 | 140-00911 | Reversible scraper blade 3/8" x 4" x 79½" lg | 1 |
| 2 | 125-0715 | Plow bolt 7/16" NC x 1½" lg + nut & lockwasher | 8 |
| 3 | 110-01841 | Skid shoe (right side) | 1 |
| 4 | Std. | Roll pin ¼" x 1½" lg | 2 |
| 5 | 8162 | Skid shoes lock | 2 |
| 6 | 8196 | U-shaped UHMW 3/8" x 7/8" x 91" lg | 1 |
| 7 | 8111 | Hitch pin clip 5/32" (CP-93H) | 2 |
| 8 | Std. | Bolt 1/2" NC x 4" lg + lock nut | 2 |
| 9 | Std. | Bolt 5/8" NC x 4 1/2" lg + nylon locknut | 2 |
| 10 | Std. | Hairpin cotter 5/32" x 2" lg | 4 |
| 11 | 8229 | Connecting rod ½" x 2" x 22" lg | 1 |
| 12 | 110-02081 | Adjustment plate for gear box + 4 nuts ½" NC | 1 |
| 13 | 8198 | Rotary drum 28" ø | 1 |
| 14 | Std. | Bolt 5/8" NC x 1½" lg + nylon locknut | 8 |
| 15 | Std. | Bolt ½" NC x 1" lg + lock washer + 4 flat washers | 8 |
| 16 | Std. | Hitch pin clip 5/32" | 3 |
| 17 | 8220 | Storage support pin | 1 |
| 18 | 8219 | Storage support | 1 |
| 19 | 110-02121 | Gear box support | 1 |
| 20 | 8232 | UHMW flat washer 1/8" x 4 5/8" i.d. x 8 1/8" o.d. | 1 |
| 21 | 8270 | Gear box | 1 |
| 22 | 8180 | 3-points side bar | 2 |
| 23 | 8936 | Right lower hitch | 1 |
| 24 | Std. | Bolt 5/8" NC x 2" lg + nylon locknut | 2 |
| 25 | 8004 | Pin category 1 & 2 | 2 |
| 26 | 8202 | P.T.O. shaft | 1 |
| 27 | 8935 | Left lower hitch | 1 |
| 28 | Std. | Bolt 3/4" NC x 4 1/2" lg + nylon locknut | 1 |
| 29 | 8233 | Upper hitch | 1 |
| 30 | Std. | Bolt 3/4" NC x 2½" lg + nylon locknut | 1 |
| 31 | 6466 | Splined adaptor 1¼"-19 (welded) | 1 |
| 32 | 8008 | Auger drive shaft 32 7/16" lg overall (includes no. 31 and 34) | 1 |
| 33 | Std. | Bolt 1/4" NC x 2" lg + nylon locknut | 1 |
| 34 | 8164 | Bushing 1/4" i.d. x 3/4" o.d. x 3/4" lg (welded) | 2 |
| 35 | 8184 | Sprocket #80 + shearplate | 1 |
| 36 | 8009 | Brass bushing 1 1/4" i.d. x 1 1/2" o.d. x 1 3/16" lg | 2 |
| 37 | Std. | Grease fitting 1/4"-28 straight | 5 |
| 38 | 8011 | Bearing 1 1/4" + flange | 4 |
| 39 | 110-01141 | Skid shoe (left side) | 1 |
| 40 | 8188 | Chain #80 x 75¾"lg | 1 |
| 41 | --- | Frame P-862TRC | 1 |
| 42 | 150-00381 | Idler clevis pin | 1 |
| 43 | 9287 | Idler sprocket #80 | 2 |
| 44 | Std. | Nut 7/8" NC | 2 |
| 45 | 110-01211 | Idler | 1 |
| 46 | 110-01231 | Threaded rod for idler adjustment + nut 7/16" NC | 1 |
| 47 | 110-01221 | Threaded tube for idler adjustment | 1 |
| 48 | 9473 | Compression spring | 1 |
| 49 | Std. | Bolt 3/4" NC x 2 1/2" lg + nylon locknut | 2 |
| 50 | 110-01851 | Chain guard | 1 |
| 51 | Std. | Bolt 7/16" NC x 1" lg + nylon locknut | 5 |

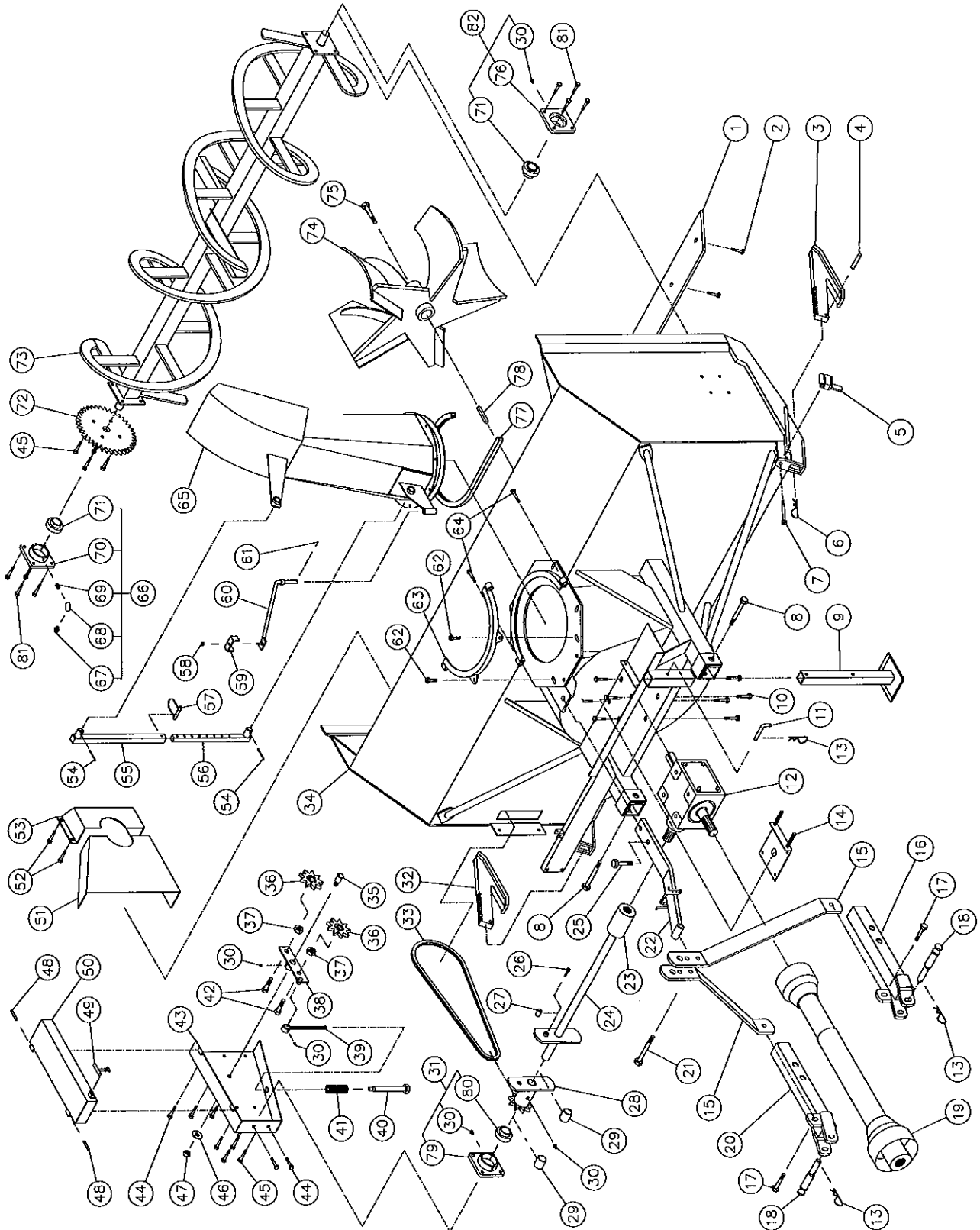
SNOWBLOWER P-862TRC (cont'd)

| REF. | PART # | DESCRIPTION | QTY |
|------|-----------|---|------|
| 52 | Std. | Bolt 7/16" NC x 1 1/2" lg + nylon locknut | 32 |
| 53 | Std. | Flat washer 5/8" | 1 |
| 54 | Std. | Nut 5/8" NC | 1 |
| 55 | Std. | Goupille à ressort 5/16" x 2" lg | 2 |
| 56 | 8125 | Rubber fastener | 1 |
| 57 | 110-01421 | Chain guard cover | 1 |
| 58 | 130-02001 | Inside guard (welded) | 1 |
| 59 | Std. | Bolt 3/8" NC x 1" lg + nylon locknut | 4 |
| 60 | 8018 | Inside guard (bolted) | 1 |
| 61 | 8146 | Chute adjusting tube | opt. |
| 62 | 8145 | Chute adjusting rod | opt. |
| 63 | 8112 | Lock pin 1/4" | opt. |
| 64 | Std. | Nylon locknut 5/16" NC | 1 |
| 65 | 140-00881 | Hoses mounting plate | 1 |
| 66 | 110-01111 | Mounting support plate | 1 |
| 67 | Std. | Cotter pin 1/8" x 1" | 1 |
| 68 | Std. | Bolt 1/2" NC x 1 3/4" lg + nylon locknut & flat washer | 2 |
| 69 | 110-01341 | Retaining bracket | 1 |
| 70 | Std. | Bolt 7/16" NC x 3"lg + nylon locknut | 2 |
| 71 | 110-01861 | Chute | 1 |
| 72 | 8011-C | Bearing 1 1/4" + flange + elbow grease fitting | 1 |
| 73 | Std. | Grease fitting 1/8"-NPT straight | 1 |
| 74 | 8226 | Elbow 90° 1/8"-NPT | 1 |
| 75 | 8227 | Straight joint 1/8"-NPT | 1 |
| 76 | 8166-M | Modified flange | 1 |
| 77 | 8165 | Bearing 1 1/4" | 5 |
| 78 | 8185 | Sprocket 80A30 T 1 1/4" ø | 1 |
| 79 | 8139 | Lower auger P-862TRC | 1 |
| 80 | 8134 | Upper auger P-862TRC | 1 |
| 81 | 8144 | Sprocket 60A30 T 1 1/4" ø | 1 |
| 82 | 8021 | Sprocket 60A38 T 1 1/4" ø | 1 |
| 83 | 110-01891 | Impeller 28" ø 4 blades | 1 |
| 84 | 8228 | Impeller cap screw 5/8" NC x 1 1/2" lg + lock washer | 1 |
| 85 | 8166 | Flange F207 | 4 |
| 86 | 8149 | U-shaped UHMW ± 14" i. d. | 1 |
| 87 | 8030 | Square key 3/8" x 3/8" x 3 1/2" lg | 1 |
| 88 | Std. | Bolt 7/16 NC x 1" lg + nylon locknut | 4 |
| 89 | 8135 | Drive chain guard (upper auger) | 1 |
| 90 | 8141 | Chain #60 x 65" lg | 1 |
| 91 | 8186 | Idler sprocket #60 | 1 |
| 92 | 8136 | Idler for upper auger (hole 1/2") + 2 nuts 1/2" NC | 1 |
| 93 | Std. | Bolts 1/2" NC x 3 1/2" lg + nylon locknut & flat washer | 1 |
| NI* | Std. | Rotary drum safety shear bolt 3/8" NC x 2" lg + nylon locknut | 1 |

10

*NI = NOT ILLUSTRATED

SNOWBLOWER P-920



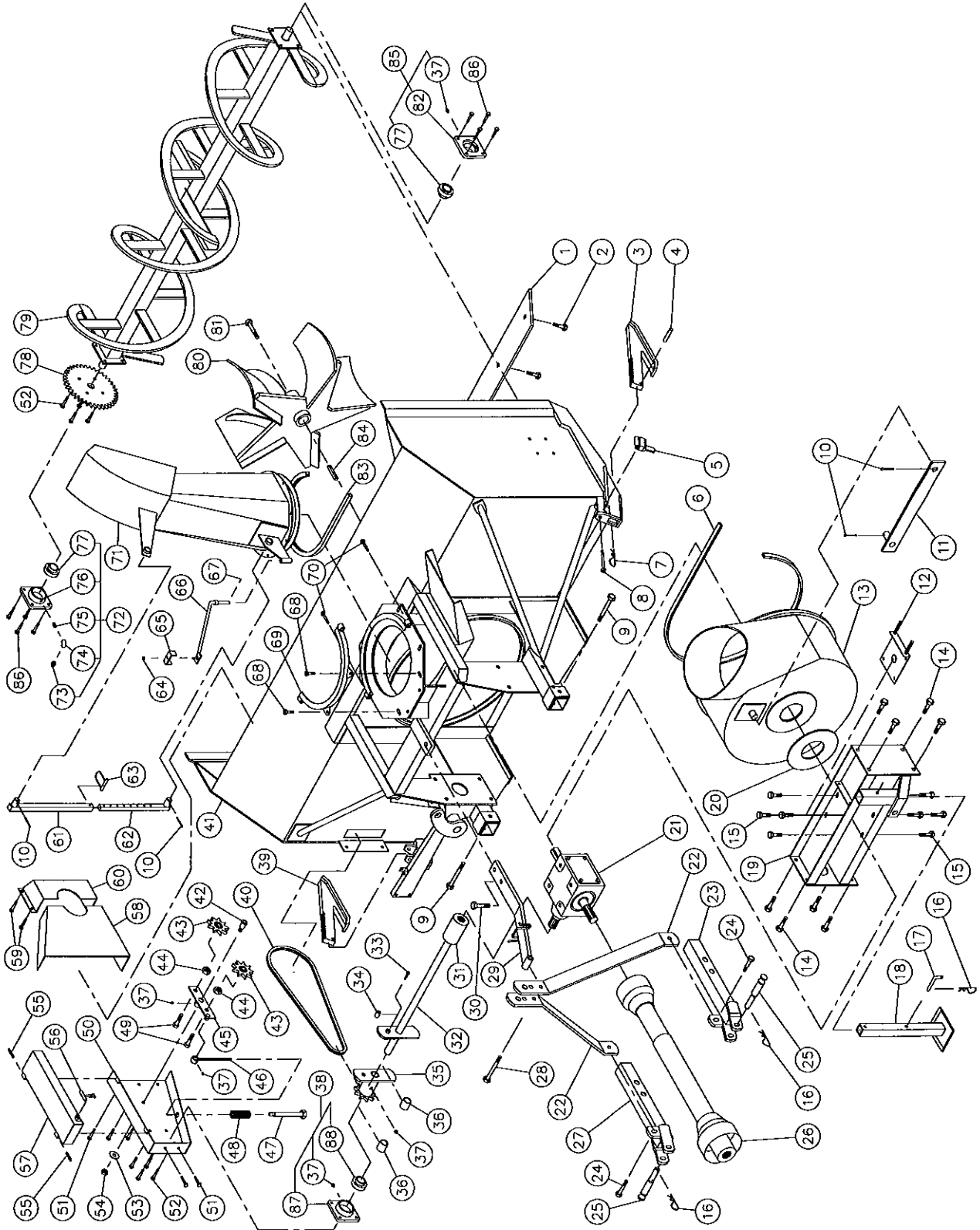
SNOWBLOWER P-920 (cont'd)

| REF. | PART # | DESCRIPTION | QTY |
|------|-----------|---|-----|
| 1 | 140-00811 | Reversible scraper blade 3/8" x 4" x 84 1/2" lg | 1 |
| 2 | 125-0717 | Plow bolt 7/16" x 1 3/4" lg + nut & lock washer | 9 |
| 3 | 110-00931 | Skid shoe (right side) | 1 |
| 4 | Std. | Roll pin 1/4" x 1 1/2" lg | 2 |
| 5 | 8162 | Skid shoes lock | 2 |
| 6 | 8111 | Hitch pin clip 5/32" (CP-93H) | 2 |
| 7 | Std. | Bolt 1/2" NC x 4" lg + lock nut | 2 |
| 8 | Std. | Bolt 3/4" NC x 5" lg + nylon lock nut | 2 |
| 9 | 9462 | Storage support | 1 |
| 10 | Std. | Bolt 5/8" NC x 1 1/4" lg + lock washer + 4 flat washers | 8 |
| 11 | 8220 | Storage support pin | 1 |
| 12 | 9522 | Gear box | 1 |
| 13 | Std. | Hitch pin clip 5/32" | 3 |
| 14 | 9428 | Adjustment plate for gear box + 4 nuts 1/2" NC | 1 |
| 15 | 9443 | 3-points side bar | 2 |
| 16 | 110-01591 | Right lower hitch | 1 |
| 17 | Std. | Bolt 3/4" NC x 2 1/2" lg + nylon lock nut | 2 |
| 18 | 9269 | Pin category 2 | 2 |
| 19 | 9225-EG | P.T.O. shaft | 1 |
| 20 | 110-00771 | Left lower hitch | 1 |
| 21 | Std. | Bolt 7/8" NC x 6" lg + nylon lock nut | 1 |
| 22 | 110-00811 | Upper hitch | 1 |
| 23 | 6467 | Splined adaptor 1 3/4"-20 (welded) | 1 |
| 24 | 9305 | Auger drive shaft 34 3/8" lg overall (includes no. 23 and 27) | 1 |
| 25 | Std. | Bolt 7/8" NC x 3" lg + nylon lock nut | 1 |
| 26 | Std. | Bolt 5/16" NC x 2" lg + nylon lock nut | 1 |
| 27 | 9407 | Bushing 5/16" i.d. x 3/4" o.d. x 3/4" lg (welded) | 2 |
| 28 | 9294 | Sprocket #80 + shearplate | 1 |
| 29 | 8009 | Brass bushing 1 1/4" i.d. x 1 1/2" o.d. x 1 3/16" lg | 2 |
| 30 | Std. | Grease fitting 1/4"-28 straight | 5 |
| 31 | 8011 | Bearing 1 1/4" + flange | 1 |
| 32 | 110-01551 | Skid shoe (left side) | 1 |
| 33 | ASA80-84 | Chain #80 x 84 1/4" lg | 1 |
| 34 | - - - | Frame P-920 | 1 |
| 35 | 150-00331 | Idler clevis pin | 1 |
| 36 | 9287 | Idler sprocket #80 (steel) | 1 |
| 37 | Std. | Nut 7/8" NC | 2 |
| 38 | 110-01051 | Idler | 1 |
| 39 | 110-01061 | Threaded rod for idler adjustment + nut 7/16" NC | 1 |
| 40 | 110-01071 | Threaded tube for idler adjustment | 1 |
| 41 | 9473 | Compression spring | 1 |
| 42 | Std. | Bolt 3/4" NC x 2 1/2" lg + nylon locknut | 2 |
| 43 | 110-01601 | Chain guard | 1 |
| 44 | Std. | Bolt 7/16" NC x 1" lg + nylon lock nut | 5 |
| 45 | Std. | Bolt 7/16" NC x 1 1/2" lg + nylon lock nut | 8 |
| 46 | Std. | Flat washer 5/8" | 1 |
| 47 | Std. | Nut 5/8" NC | 1 |
| 48 | Std. | Roll pin 5/16" x 2" lg | 2 |
| 49 | 8125 | Rubber fastener | 1 |
| 50 | 110-00951 | Chain guard cover | 1 |
| 51 | 130-01381 | Inside guard (welded) | 1 |

SNOWBLOWER P-920 (cont'd)

| REF. | PART # | DESCRIPTION | QTY |
|------|-----------|--|------|
| 52 | Std. | Bolt 3/8" NC x 1" lg + nylon lock nut..... | 4 |
| 53 | 8925 | Inside guard (bolted) | 1 |
| 54 | Std. | 2 hairpin cotter 5/32" x 2" lg | opt. |
| 55 | 8146 | Chute adjusting tube | opt. |
| 56 | 8145 | Chute adjusting rod | opt. |
| 57 | 8112 | Lock pin 1/4" | opt. |
| 58 | Std. | Nylon locknut 5/16" NC | 1 |
| 59 | 140-00881 | Hoses mounting plate | 1 |
| 60 | 110-01111 | Mounting support plate | 1 |
| 61 | Std. | Cotter pin 1/8" x 1" | 1 |
| 62 | Std. | Bolt 1/2" NC x 1 3/4" lg + nylon locknut & flat washer | 2 |
| 63 | 110-01341 | Retaining bracket | 1 |
| 64 | Std. | Bolt 7/16" NC x 3" lg + nylon locknut | 2 |
| 65 | 110-01861 | Chute | 1 |
| 66 | 9277-C | Bearing 1 1/2" + flange + elbow grease fitting | 1 |
| 67 | Std. | Grease fitting 1/8"-NPT straight | 1 |
| 68 | 8226 | Elbow 90° 1/8"-NPT | 1 |
| 69 | 8227 | Straight joint 1/8"-NPT | 1 |
| 70 | 9410-M | Modified flange F208 | 1 |
| 71 | 9409 | Bearing 1 1/2" | 2 |
| 72 | 9281 | Sprocket 80A30 T 1 1/2" ø | 1 |
| 73 | 110-02061 | Auger P-920 | 1 |
| 74 | 110-04741 | Impeller 30" ø 5 blades | 1 |
| 75 | 8228 | Impeller cap screw 5/8" x 1 1/2" + lock washer | 1 |
| 76 | 9410 | Flange F208 | 1 |
| 77 | 8149 | U-shaped UHMW ± 14" i. d. | 1 |
| 78 | 9285 | Square key 1/2" x 1/2" x 4" lg | 1 |
| 79 | 8166 | Flange F207 | 1 |
| 80 | 8165 | Bearing 1 1/4" | 1 |
| 81 | Std. | Bolt 1/2" NC x 1 3/4" lg + nylon locknut | 8 |
| 82 | 9277 | Bearing 1 1/2" + flange | 1 |

SNOWBLOWER P-920TRC



10

SNOWBLOWER P-920TRC (cont'd)

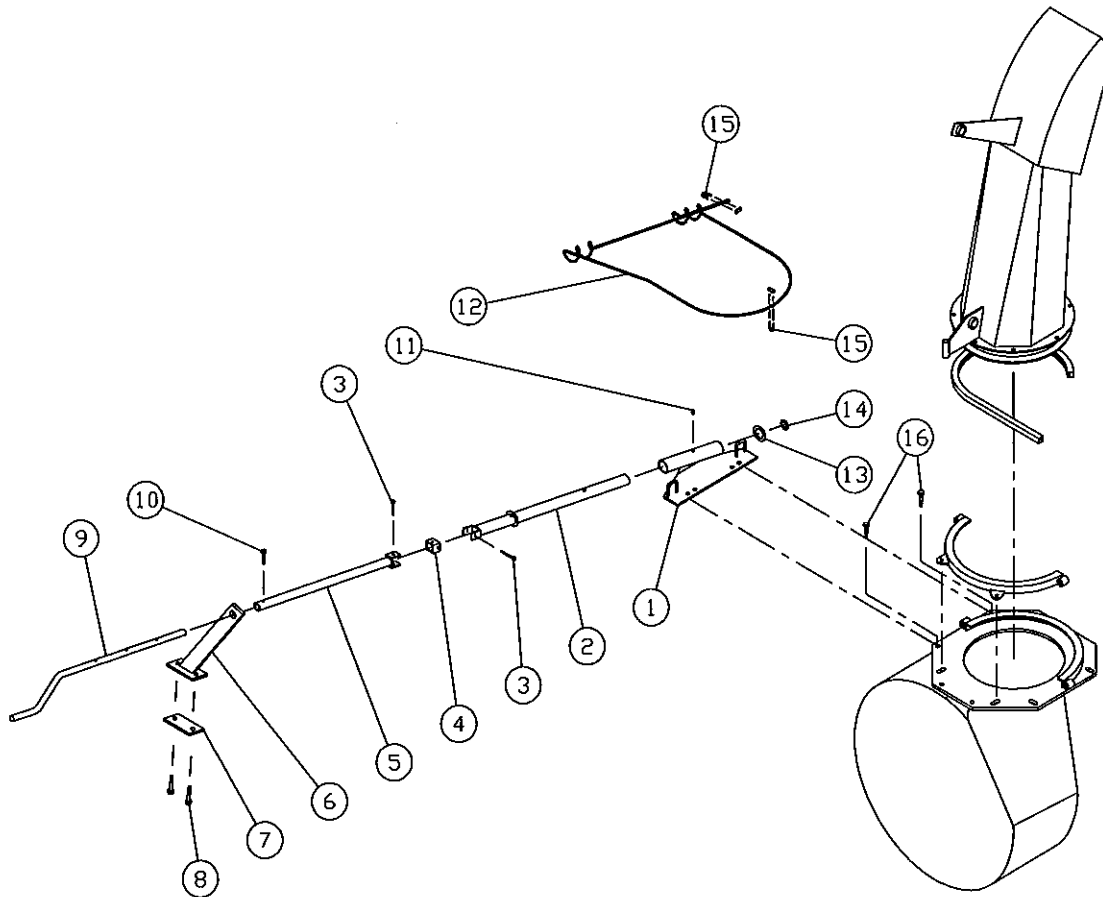
| REF. | PART # | DESCRIPTION | QTY |
|------|-----------|---|-----|
| 1 | 140-00811 | Reversible scraper blade 3/8" x 4" x 84½" lg | 1 |
| 2 | 125-0717 | Plow bolt 7/16" NC x 1¾" lg + nut & lock washer | 9 |
| 3 | 110-00931 | Skid shoe (right side) | 1 |
| 4 | Std. | Roll pin ¼" x 1½" lg | 2 |
| 5 | 8162 | Skid shoes lock | 2 |
| 6 | 9435 | U-shaped UHMW 3/8" x 7/8" x 97" lg | 1 |
| 7 | 8111 | Hitch pin clip 5/32" (CP-93H) | 2 |
| 8 | Std. | Bolt 1/2" NC x 4" lg + lock nut | 2 |
| 9 | Std. | Bolt 3/4" NC x 5" lg + nylon lock nut | 2 |
| 10 | Std. | Cotter pin 5/32" x 2" lg | 4 |
| 11 | 110-01911 | Connecting rod ½" x 2" x 25¾" lg | 1 |
| 12 | 9428 | Adjustment plate for gear box + 4 nuts ½" NC | 1 |
| 13 | 110-01921 | Rotary drum 30" ø x 12" depth | 1 |
| 14 | Std. | Bolt 3/4" NC x 2" lg + nylon lock nut | 8 |
| 15 | Std. | Bolt 5/8" NC x 1¼" lg + lockwasher + 4 flat washers | 8 |
| 16 | Std. | Hitch pin clip 5/32" | 3 |
| 17 | 8220 | Storage support pin | 1 |
| 18 | 9462 | Storage support | 1 |
| 19 | 110-01681 | Gear box support | 1 |
| 20 | 9432 | UHMW flat washer 1/8" x 8 5/8" i.d. x 11 1/2" o.d. | 1 |
| 21 | 9522 | Gear box | 1 |
| 22 | 9444 | 3-points side bar | 2 |
| 23 | 110-01591 | Right lower hitch | 1 |
| 24 | Std. | Bolt 3/4" NC x 2½" lg + nylon lock nut | 2 |
| 25 | 9269 | Pin category 2 | 2 |
| 26 | 9225-EG | P.T.O. shaft | 1 |
| 27 | 110-00771 | Left lower hitch | 1 |
| 28 | Std. | Bolt 7/8" NC x 6" lg + nylon lock nut | 1 |
| 29 | 110-00781 | Upper hitch | 1 |
| 30 | Std. | Bolt 7/8" NC x 3" lg + nylon lock nut | 1 |
| 31 | 6467 | Splined adaptor 1 ¾" - 20 (welded) | 1 |
| 32 | 9305 | Auger drive shaft 34 3/8" lg overall (includes no. 31 and 34) | 1 |
| 33 | Std. | Bolt 5/16" NC x 2" lg + nylon locknut | 1 |
| 34 | 9407 | Bushing 5/16" i.d. x 3/4" o.d. x 3/4" lg (welded) | 2 |
| 35 | 9294 | Sprocket #80 + shearplate | 1 |
| 36 | 8009 | Brass bushing 1 1/4" i.d. x 1 1/2" o.d. x 1 3/16" lg | 2 |
| 37 | Std. | Grease fitting 1/4"-28 straight | 5 |
| 38 | 8011 | Bearing 1 1/4" + flange | 1 |
| 39 | 110-01551 | Skid shoe (left side) | 1 |
| 40 | ASA 80-84 | Chain #80 x 84" lg | 1 |
| 41 | - - - | Frame P-920TRC | 1 |
| 42 | 150-00331 | Idler clevis pin | 1 |
| 43 | 9287 | Idler sprocket #80 | 2 |
| 44 | Std. | Nut 7/8" NC | 2 |
| 45 | 110-01051 | Idler | 1 |
| 46 | 110-01061 | Threaded rod for idler adjustment + nut 7/16" NC | 1 |
| 47 | 110-01071 | Threaded tube for idler adjustment | 1 |
| 48 | 9473 | Compression spring | 1 |
| 49 | Std. | Bolt 3/4" NC x 2 1/2" lg + écrou à blocage de nylon | 2 |
| 50 | 110-01601 | Chain guard | 1 |
| 51 | Std. | Bolt 7/16" NC x 1" lg + nylon lock nut | 5 |
| 52 | Std. | Bolt 7/16" NC x 1 1/2" lg + nylon lock nut | 8 |
| 53 | Std. | Flat washer 5/8" | 1 |
| 54 | Std. | Nut 5/8" NC | 1 |
| 55 | Std. | Roll pin 5/16" x 2" lg | 2 |
| 56 | 8125 | Rubber fastener | 1 |

SNOWBLOWER P-920TRC (cont'd)

| REF. | PART # | DESCRIPTION | QTY |
|------|-----------|---|------|
| 57 | 110-00951 | Chain guard cover | 1 |
| 58 | 130-01381 | Inside guard (welded) | 1 |
| 59 | Std. | Bolt 3/8" NC x 1" lg + nylon locknut | 4 |
| 60 | 8925 | Inside guard (bolted) | 1 |
| 61 | 8146 | Chute adjusting tube | opt. |
| 62 | 8145 | Chute adjusting rod | opt. |
| 63 | 8112 | Lock pin 1/4" | opt. |
| 64 | Std. | Nylon locknut 5/16" NC | 1 |
| 65 | 140-00881 | Hoses mounting plate | 1 |
| 66 | 110-01111 | Mounting support plate | 1 |
| 67 | Std. | Cotter pin 1/8" x 1" | 1 |
| 68 | Std. | Bolt 1/2" NC x 1 3/4" lg + nylon locknut & flat washer | 2 |
| 69 | 110-01341 | Retaining bracket | 1 |
| 70 | Std. | Bolt 7/16" NC x 3" lg + nylon locknut | 2 |
| 71 | 110-01861 | Chute | 1 |
| 72 | 9277-C | Bearing 1 1/2" + flange | 1 |
| 73 | Std. | Grease fitting 1/8"-NPT straight | 1 |
| 74 | 8226 | Elbow 90° 1/8"-NPT | 1 |
| 75 | 8227 | Straight joint 1/8"-NPT | 1 |
| 76 | 9410-M | Modified flange F208 | 1 |
| 77 | 9409 | Bearing 1 1/2" | 2 |
| 78 | 9281 | Sprocket 80A30 T 1 1/2" ø | 1 |
| 79 | 110-02061 | Auger P-920 | 1 |
| 80 | 110-01611 | Impeller 30" ø 5 blades | 1 |
| 81 | 8228 | Impeller cap screw 5/8" NC x 1 1/2" lg + lock washer | 1 |
| 82 | 9410 | Flange F208 | 1 |
| 83 | 8149 | U-shaped UHMW ± 14" i. d. | 1 |
| 84 | 9285 | Square key 1/2" x 1/2" x 4" lg | 1 |
| 85 | 9277 | Bearing 1 1/2" + flange | 1 |
| 86 | Std. | Bolt 1/2" NC x 1 3/4" lg + nylon locknut | 8 |
| 87 | 8166 | Flange F207 | 1 |
| 88 | 8165 | Bearing 1 1/4" | 1 |
| NI* | Std. | Rotary drum safety shear bolt 3/8" NC x 2" lg + nylon locknut | 1 |

*NI = NOT ILLUSTRATED

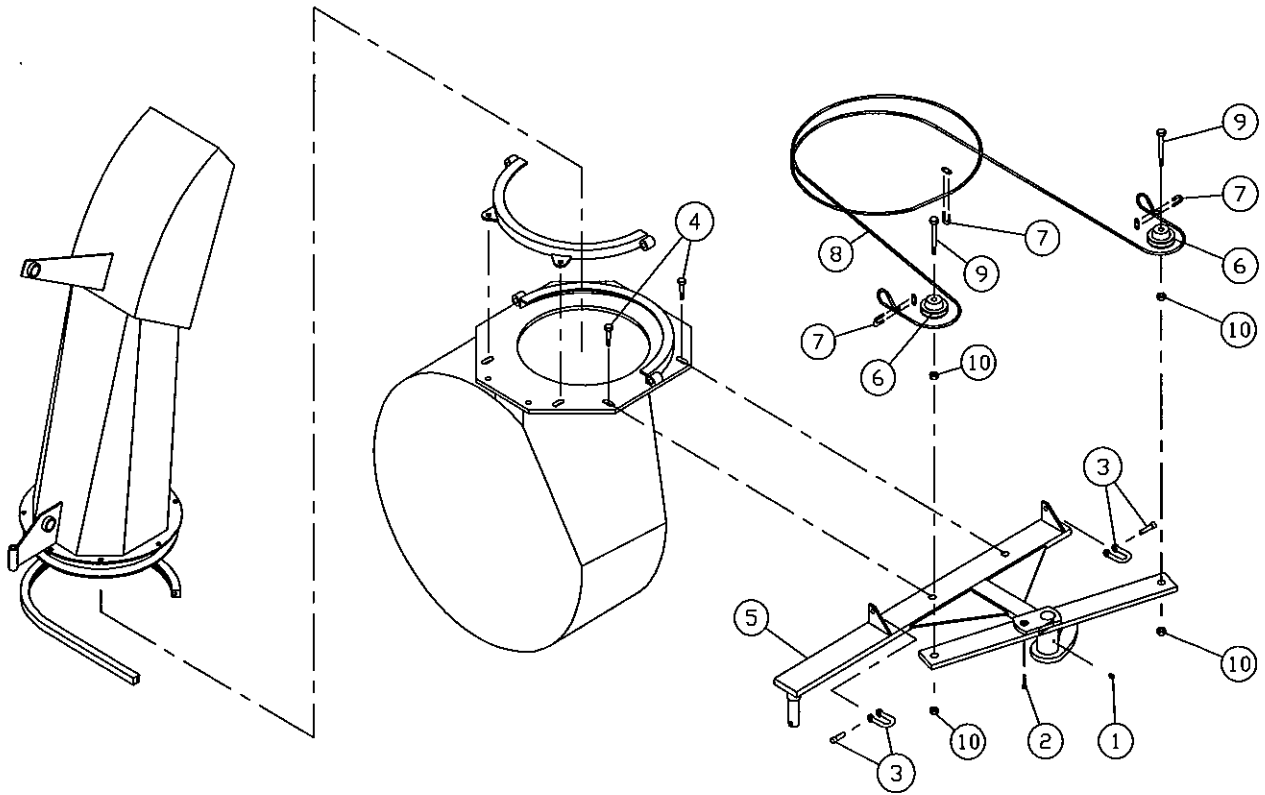
MANUAL CHUTE KIT M-7486



| REF. | PART # | DESCRIPTION | QTY |
|------|--------|--|-----|
| 1 | 8203 | Rotation system support | 1 |
| 2 | 8090 | Front tube | 1 |
| 3 | Std. | Bolt 1/4" x 2" lg + nylon lock nut | 2 |
| 4 | 8089 | Universal block | 1 |
| 5 | 8204 | Rear tube | 1 |
| 6 | 8095 | Crank support | 1 |
| 7 | 8094 | Support plate | 1 |
| 8 | Std. | Bolt 7/16" x 1 1/2" lg + nylon locknut | 2 |
| 9 | 8205 | Crank | 1 |
| 10 | Std. | Bolt 1/4" x 1 1/2" lg + nylon locknut | 1 |
| 11 | Std. | Grease fitting 1/4"-28 straight | 1 |
| 12 | 8092 | Cable 1/8" x 108" lg | 1 |
| 13 | 8206 | Flat washer 1 3/8" i. d. | 1 |
| 14 | Std. | Flat washer 1/2" i. d. | 1 |
| 15 | 6303 | Cable clamp 1/8" | 2 |
| 16 | Std. | Bolt 1/2" NF x 1 1/2" lg + nylon locknut & flat washer | 2 |

10

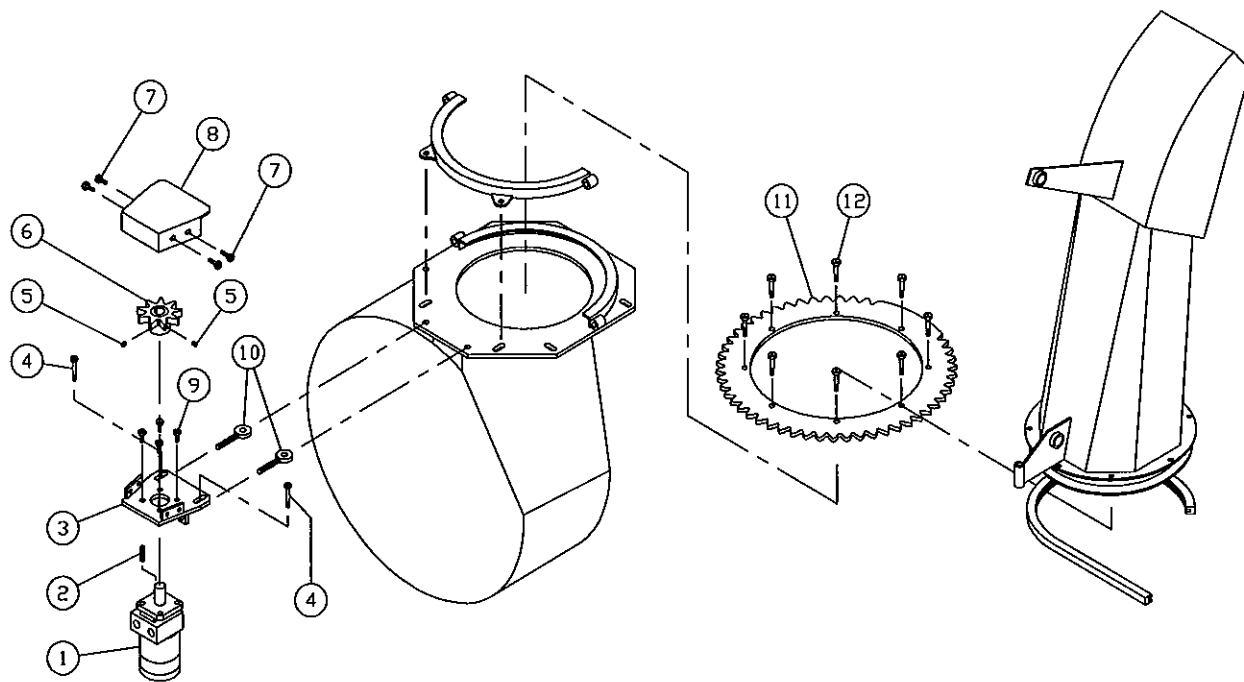
HYDRAULIC CHUTE KIT *Cylinder H-7486*



| REF. | PART # | DESCRIPTION | QTY |
|------|--------|--|-----|
| 1 | Std. | Grease fitting 1/4"-28 straight | 1 |
| 2 | Std. | Safety shear bolt 3/8" NC x 2" + nylon locknut | 1 |
| 3 | 8097 | Clevis 5/16" | 2 |
| 4 | Std. | Bolt 1/2" NC x 2" lg + nylon locknut & flat washer | 2 |
| 5 | 8207 | Frame | 1 |
| 6 | 8098 | Pulley 3" | 2 |
| 7 | 8099 | Cable clamp 1/4" | 3 |
| 8 | 8100 | Cable 1/4" x 152" | 1 |
| 9 | Std. | Bolt 5/8" NC x 3" lg | 2 |
| 10 | Std. | Nut 5/8"NC | 4 |
| NI* | 25TR08 | Cylinder | 1 |

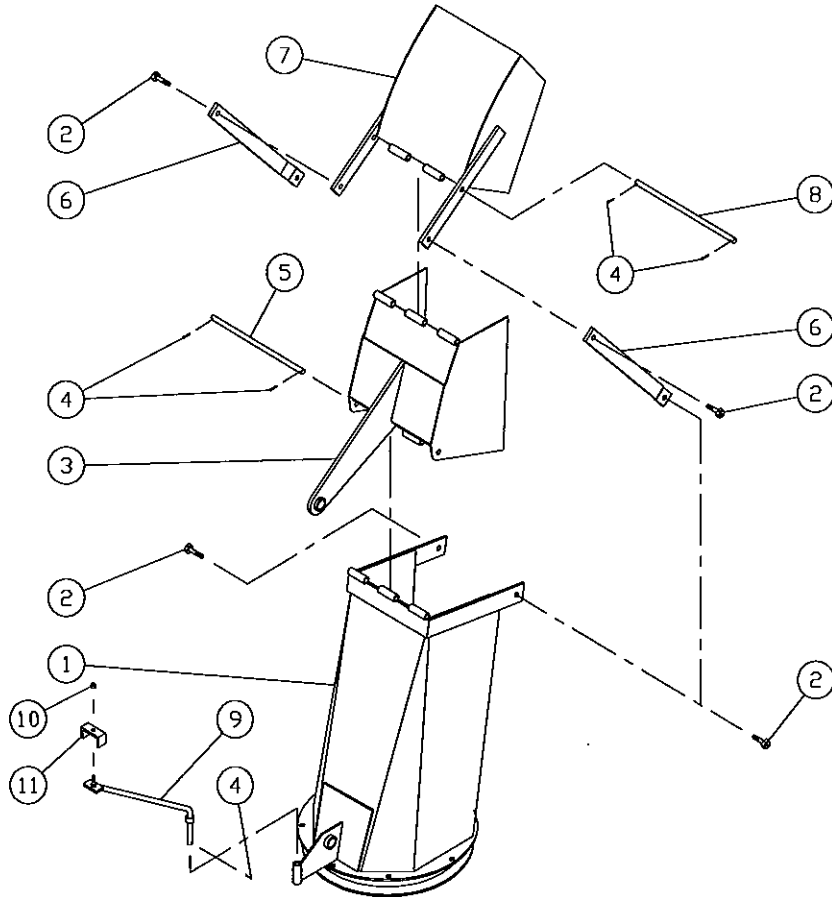
*NI = NOT ILLUSTRATED

HYDRAULIC CHUTE KIT Motor SP-7486



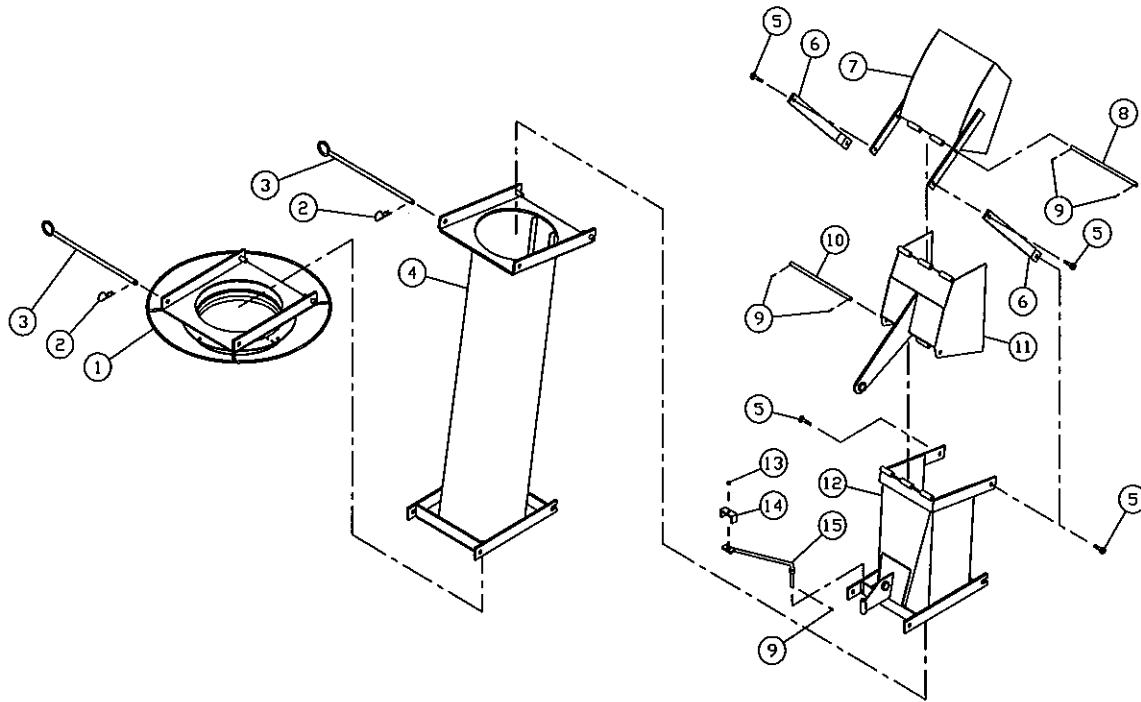
| REF. | PART # | DESCRIPTION | QTY |
|------|--------|---|-----|
| 1 | --- | Hydraulic motor (DH250 or DH315) | 1 |
| 2 | --- | Key (as motor requirement) | 1 |
| 3 | 8269 | Motor mounting plate | 1 |
| 4 | Std. | Bolt 7/16" NC x 2" lg + nylon locknut & flat washer | 2 |
| 5 | Std. | Allen set screw 3/8" NC x 3/8" lg | 2 |
| 6 | 8159 | Sprocket (9 teeth) | 1 |
| 7 | Std. | Bolt 3/8" NC x 3/4" lg + lock washer & flat washer | 4 |
| 8 | 8158 | Guard | 1 |
| 9 | Std. | Bolt 3/8" NC x 1" lg + lock washer | 4 |
| 10 | 8161 | Take-up screws + 2 nuts (3/8" NC) | 2 |
| 11 | 8157 | Ring gear (47 teeth) | 1 |
| 12 | Std. | Bolt 7/16" NC x 1 1/4" lg + nylon locknut | 8 |

SEMI-INDUSTRIAL CHUTE PSI-7486



| REF. | PART # | DESCRIPTION | QTY |
|------|-----------|---|-----|
| 1 | 110-01831 | Chute base | 1 |
| 2 | Std. | Bolt ½" x 1½ lg + nylon lock nut | 4 |
| 3 | 8209 | Lower chute deflector | 1 |
| 4 | Std. | Cotter pin 1/8" x 1" lg | 5 |
| 5 | 8210 | Lower chute deflector pin | 1 |
| 6 | 8211 | Connecting rod | 2 |
| 7 | 8212 | Upper chute deflector | 1 |
| 8 | 8213 | Upper chute deflector pin | 1 |
| 9 | 110-01111 | Threaded rod for idler adjustment | 1 |
| 10 | Std. | Nylon locknut 5/16" NC | 1 |
| 11 | 140-00881 | Fixation des boyaux | 1 |

INDUSTRIAL CHUTE PC-7486

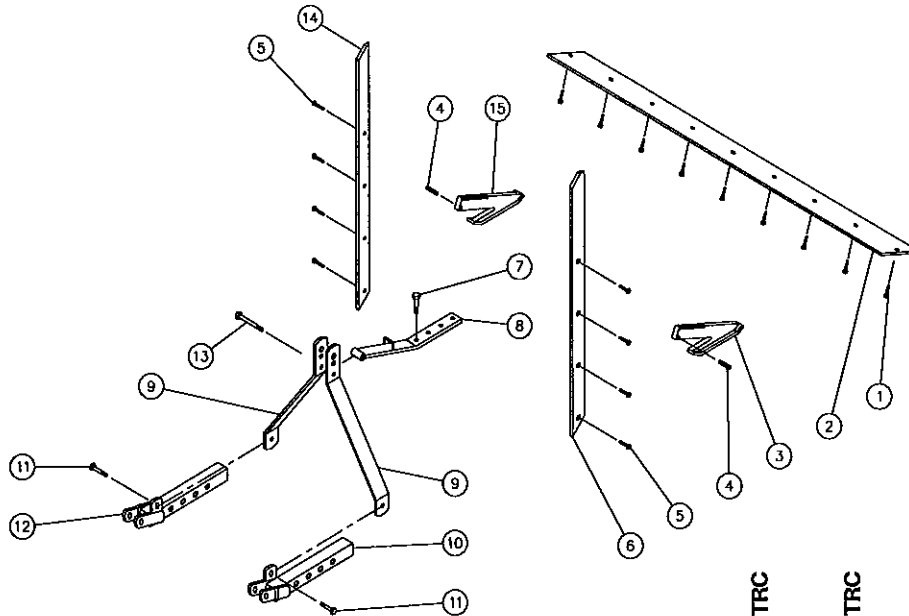


| REF. | PART # | DESCRIPTION | QTY |
|------|-----------|--|------|
| 1 | 8216 | Chute adaptor with quick attach | 1 |
| 2 | Std. | Hitch pin clip 5/32" | 2 |
| 3 | 8200 | Pin for quick attach (adaptor & extension) | 2 |
| 4 | PR-7486 | Extension 48" PR-7486 | opt. |
| 5 | Std. | Bolt 1/2" NC x 1 1/2" lg + nylon lock nut | 4 |
| 6 | 8211 | Connecting rod | 2 |
| 7 | 8212 | Upper deflector | 1 |
| 8 | 8213 | Upper deflector pin | 1 |
| 9 | Std. | Cotter pin 1/8" x 1" lg | 5 |
| 10 | 8210 | Lower deflector pin | 1 |
| 11 | 8219 | Lower deflector | 1 |
| 12 | 110-01821 | Chute base | 1 |
| 13 | Std. | Nylon locknut 5/16" NC | 1 |
| 14 | 140-00881 | Hoses mounting plate | 1 |
| 15 | 110-01111 | Mounting support plate | 1 |
| NI* | 110-01811 | "Industrial" chute assembly (includes # 5, 6, 7, 8, 9, 10, 11, 12) | 1 |

NI= NOT ILLUSTRATED

10

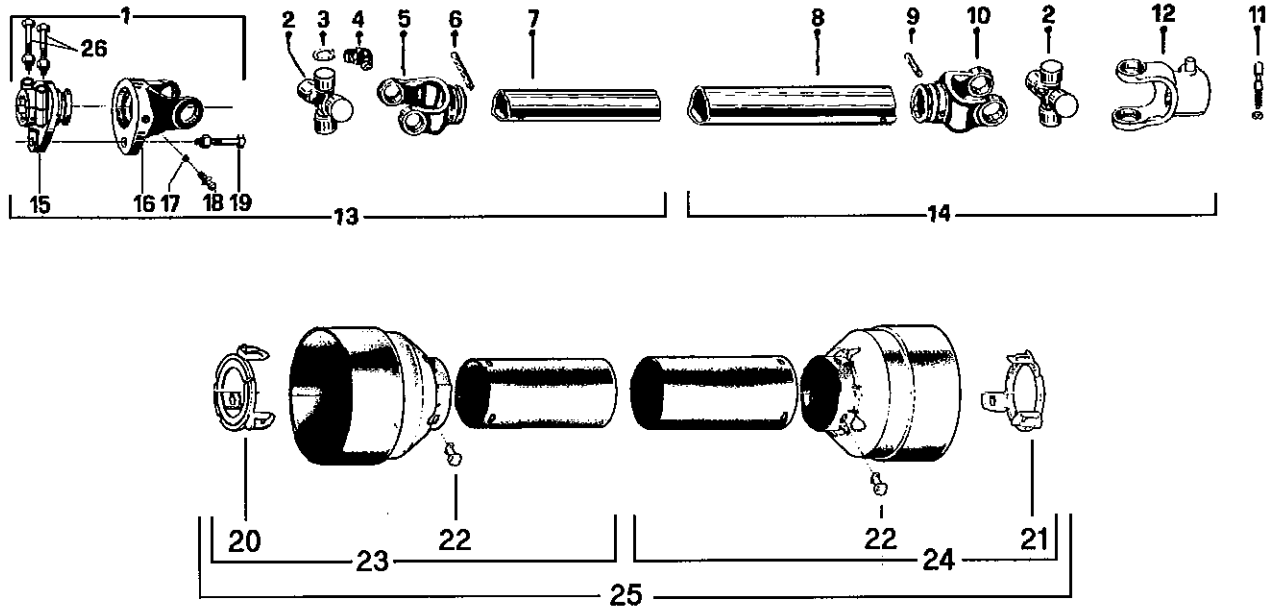
HEAVY DUTY KIT



| REF. | PART # | DESCRIPTION | P-740 | P-740 TRC | P-800 | P-800 TRC | P-860 | P-860 TRC | P-862 | P-862 TRC | P-920 | P-920TRC |
|------|-----------|--|-------|-----------|-------|-----------|-------|-----------|-------|-----------|-------|----------|
| 1 | 125-0715 | Plow bolt 7/16" NC x 1 1/2" lg + nut & lock washer | 7 | 7 | 8 | 8 | 8 | 8 | 9 | 9 | - | - |
| 1 | 125-0717 | Plow bolt 7/16" NC x 1 3/4" lg + nut & lock washer | - | - | - | - | - | - | - | - | 9 | 9 |
| 2 | 140-01051 | Carbon steel scraper blade (not reversible) 67 1/2" .. | 1 | 1 | - | - | - | - | - | - | - | - |
| 2 | 140-01061 | Carbon steel scraper blade (not reversible) 73 1/2" .. | - | - | 1 | 1 | - | - | - | - | - | - |
| 2 | 140-01071 | Carbon steel scraper blade (not reversible) 79 1/2" .. | - | - | - | - | 1 | 1 | 1 | 1 | - | - |
| 2 | 140-01041 | Carbon steel scraper blade (not reversible) 84 1/2" .. | - | - | - | - | - | - | - | - | 1 | 1 |
| 3 | 110-01781 | Carbon steel skid shoe (right side) | 1 | 1 | 1 | 1 | 1 | 1 | 1 | 1 | - | - |
| 3 | 110-01571 | Carbon steel skid shoe (right side) | - | - | - | - | - | - | - | - | 1 | 1 |
| 4 | Std. | Roll pin 1/4" x 1 1/2" lg | 2 | 2 | 2 | 2 | 2 | 2 | 2 | 2 | 2 | 2 |
| 5 | 125-0715 | Plow bolt 7/16" NC x 1 1/2" lg + nut & lock washer | 8 | 8 | 8 | 8 | 8 | 8 | 8 | 8 | 8 | 8 |
| 6 | 8175-D | Lateral blade (right side) | 1 | 1 | 1 | 1 | 1 | 1 | - | - | - | - |
| 6 | 8214-D | Lateral blade (right side) | - | - | - | - | - | - | 1 | 1 | 1 | 1 |
| 7 | Std. | Bolt 5/8" x 2 1/4" lg + nylon locknut | 1 | 1 | 1 | 1 | 1 | 1 | 1 | 1 | - | - |
| 8 | 8171 | Heavy duty upper hitch | 1 | - | 1 | - | - | - | - | - | - | - |
| 8 | 8179 | Heavy duty upper hitch | - | 1 | - | 1 | - | - | - | - | - | - |
| 8 | 8191 | Heavy duty upper hitch | - | - | - | - | 1 | - | 1 | - | - | - |
| 8 | 8190 | Heavy duty upper hitch | - | - | - | - | - | 1 | - | 1 | - | - |
| 9 | 8172 | Heavy duty 3-point side bar | 2 | - | 2 | - | - | - | - | - | - | - |
| 9 | 8192 | Heavy duty 3-point side bar | - | 2 | - | 2 | 2 | - | 2 | - | - | - |
| 9 | 8187 | Heavy duty 3-point side bar | - | - | - | - | - | 2 | - | 2 | - | - |
| 10 | 8173 | Heavy duty lower hitch (right side) | 1 | 1 | 1 | 1 | 1 | 1 | 1 | 1 | - | - |
| 11 | Std. | Bolt 5/8" x 2" lg + nylon locknut | 2 | 2 | 2 | 2 | 2 | 2 | 2 | 2 | - | - |
| 12 | 8174 | Heavy duty lower hitch (left side) | 1 | 1 | 1 | 1 | 1 | 1 | 1 | 1 | - | - |
| 13 | Std. | Bolt (grade 12) 3/4" NC x 5" lg + nylon locknut ... | 1 | 1 | 1 | 1 | 1 | 1 | 1 | 1 | - | - |
| 14 | 8175-G | Lateral blade (left side) | 1 | 1 | 1 | 1 | 1 | 1 | - | - | - | - |
| 14 | 8214-G | Lateral blade (left side) | - | - | - | - | - | - | 1 | 1 | 1 | 1 |
| 15 | 110-01771 | Carbon steel skid shoe (left side) | 1 | 1 | 1 | 1 | 1 | 1 | 1 | 1 | - | - |
| 15 | 110-01561 | Carbon steel skid shoe (left side) | - | - | - | - | - | - | - | - | 1 | 1 |

10

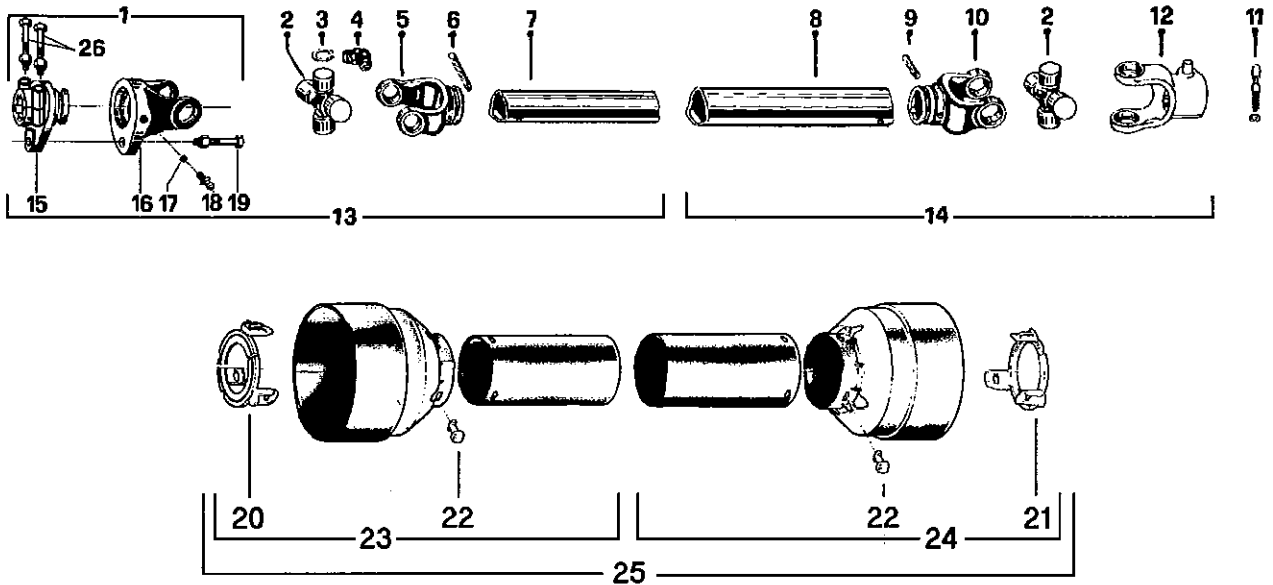
P.T.O. SHAFT # 8114-EG (T50)



| REF. | PART # | DESCRIPTION | QTY |
|------|--------|---|-----|
| 1 | 8221 | Safety shear yoke (2 bolts) | 1 |
| 2 | 8073 | U joint + 4 retaining rings + 1 grease fitting | 2 |
| 3 | 8061 | Retaining ring | 8 |
| 4 | 8110 | Grease fitting | 2 |
| 5 | 8079 | Yoke for inner tube | 1 |
| 6 | 6341 | Stopper for inner tube | 1 |
| 7 | 8077 | Inner tube | 1 |
| 8 | 8076 | Outer tube | 1 |
| 9 | 8142 | Stopper for outer tube | 1 |
| 10 | 8074 | Yoke for outer tube | 1 |
| 11 | 8068 | Yoke stopper 1 3/8" | 1 |
| 12 | 8113 | Yoke with hole 1 3/8"-6 splines + yoke stopper 1 3/8" | 1 |
| 13 | 8235 | P.T.O. section, side with safety shear bolt, inner part, without protector | 1 |
| 14 | 8236 | P.T.O. section, side without safety shear bolt, outer part, without protector | 1 |
| 15 | 8223 | Adaptor (2 bolts) | 1 |
| 16 | 8069 | Yoke and shearplate | 1 |
| 17 | 8070 | Ball | 17 |
| 18 | 8071 | Grease fitting | 1 |
| 19 | 8072 | Safety shear bolt M10 x 50mm | 1 |
| 20 | 8084-E | Bearing ring for inner guard tube | 1 |
| 21 | 8083-E | Bearing ring for outer guard tube | 1 |
| 22 | 8109 | Stopper | 6 |
| 23 | 8086-E | Inner shield | 1 |
| 24 | 8085-E | Outer shield | 1 |
| 25 | 8087 | Complete shield | 1 |
| 26 | 8222 | Bolt M12 x 70mm + lock nut | 2 |

10

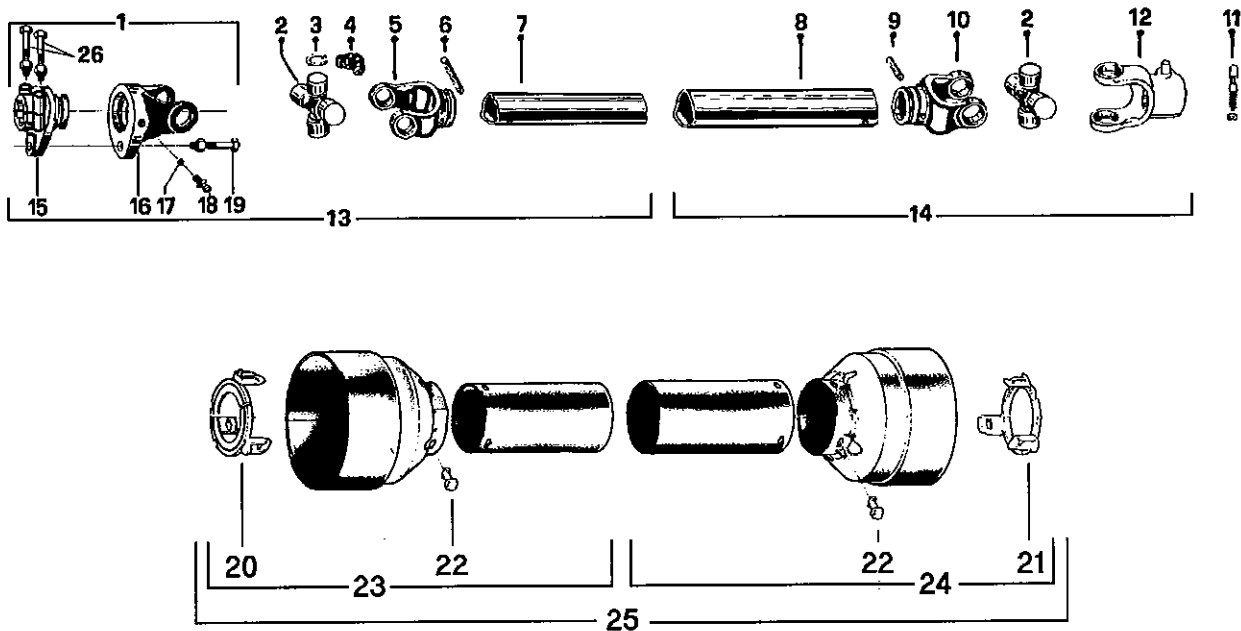
P.T.O. SHAFT # 8202 (T60)



| REF. | PART # | DESCRIPTION | QTY |
|------|--------|---|-----|
| 1 | 8237 | Safety shear yoke (2 bolts) | 1 |
| 2 | 8238 | U joint + 4 retaining rings + 1 grease fitting | 2 |
| 3 | 8061 | Retaining ring | 8 |
| 4 | 8110 | Grease fitting | 2 |
| 5 | 8239 | Yoke for inner tube | 1 |
| 6 | 8075 | Stopper for inner tube | 1 |
| 7 | 8077 | Inner tube | 1 |
| 8 | 9212 | Outer tube | 1 |
| 9 | 9210-E | Stopper for outer tube | 1 |
| 10 | 8240 | Yoke for outer tube | 1 |
| 11 | 8068 | Yoke stopper 1 3/8" | 1 |
| 12 | 8250 | Yoke with hole 1 3/8"-6 splines + yoke stopper 1 3/8" | 1 |
| 13 | 8241 | P.T.O. section, side with safety shear bolt, inner part, without protector | 1 |
| 14 | 8242 | P.T.O. section, side without safety shear bolt, outer part, without protector | 1 |
| 15 | 8243 | Adaptor (2 bolts) | 1 |
| 16 | 8244 | Yoke and shearplate | 1 |
| 17 | 9205 | Ball | 17 |
| 18 | 8071 | Grease fitting | 1 |
| 19 | 8218 | Safety shear bolt M10 x 60mm | 1 |
| 20 | 8245 | Bearing ring for inner guard tube | 1 |
| 21 | 8246 | Bearing ring for outer guard tube | 1 |
| 22 | 8109 | Stopper | 6 |
| 23 | 8247 | Inner shield | 1 |
| 24 | 8248 | Outer shield | 1 |
| 25 | 8249 | Complete shield | 1 |
| 26 | 8222 | Bolt M12 x 70mm + lock nut | 2 |

10

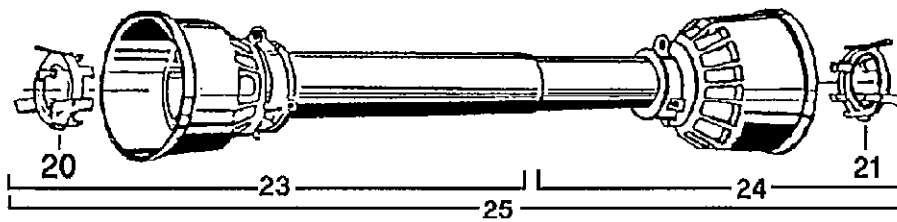
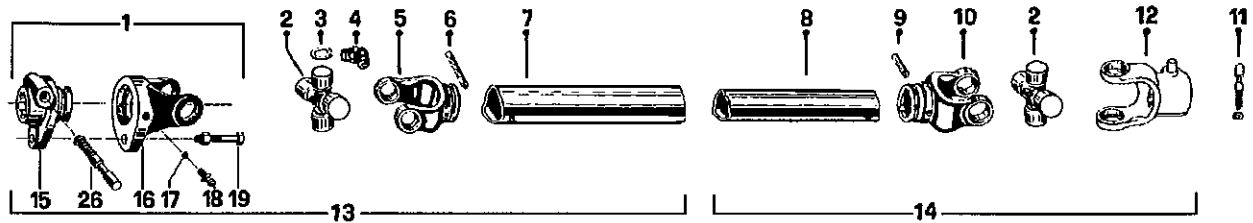
P.T.O. SHAFT # 9225-EG (T80)



| REF. | PART # | DESCRIPTION | QTY |
|------|--------|---|------|
| 1 | 9453 | Safety shear yoke (2 bolts) | 1 |
| 2 | 9208 | U-joint + 4 retaining rings + 1 grease fitting | 2 |
| 3 | 9454 | Retaining ring | 8 |
| 4 | 8110 | Grease fitting | 2 |
| 5 | 9214 | Yoke for inner tube | 1 |
| 6 | 8075 | Stopper for inner tube | 1 |
| 7 | 9212 | Inner tube | 1 |
| 8 | 9211 | Outer tube | 1 |
| 9 | 9210-E | Stopper for outer tube | 1 |
| 10 | 9209 | Yoke for outer tube | 1 |
| 11 | 8068 | Yoke stopper 1 3/8" | 2 |
| 12 | 9455 | Yoke with hole 1 3/8"-6 splines + yoke stopper 1 3/8" | 1 |
| 12 | 9463 | Yoke with hole 1 3/8"-21 splines + yoke stopper 1 3/8" | opt. |
| 12 | 9224 | Yoke with hole 1 3/4"-20 splines + yoke stopper | opt. |
| 13 | 9456 | P.T.O. section, side with safety shear bolt, inner part, without protector | 1 |
| 14 | 9457 | P.T.O. section, side without safety shear bolt, outer part, without protector | 1 |
| 15 | 9458 | Adaptor 1 3/4"-20 splines (2 bolts) | 1 |
| 16 | 9204 | Yoke and shearplate | 1 |
| 17 | 9205 | Ball | 17 |
| 18 | 8071 | Grease fitting | 1 |
| 19 | 9207 | Safety shear bolt M12 x 65mm | 1 |
| 20 | 9459 | Bearing ring for inner guard tube | 1 |
| 21 | 9460 | Bearing ring for outer guard tube | 1 |
| 22 | 8109 | Stopper | 6 |
| 23 | 9221 | Inner shield | 1 |
| 24 | 9220 | Outer shield | 1 |
| 25 | 9222 | Complete shield | 1 |
| 26 | 9461 | Bolt M12 x 90mm + lock nut | 2 |

10

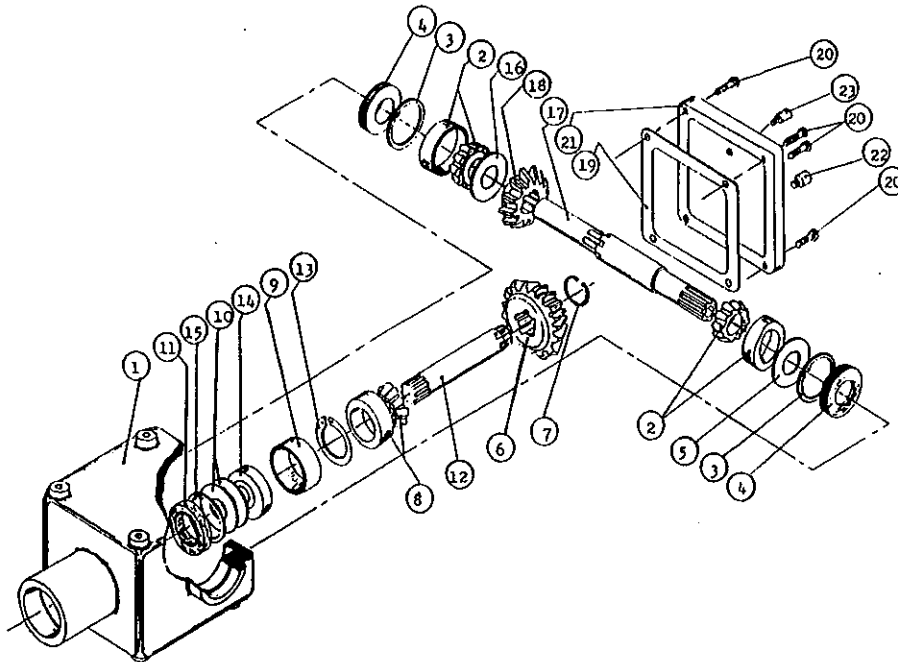
P.T.O. SHAFT # 9500 (110N)



| REF. | PART # | DESCRIPTION | QTY |
|------|--------|---|-----|
| 1 | 9501 | Quick disconnect yoke assembly 1 3/8"-6 splines | 1 |
| 2 | 9502 | U-joint + 4 retaining rings + 1 grease fitting | 2 |
| 3 | 9503 | Retaining ring | 8 |
| 4 | 8110 | Grease fitting | 2 |
| 5 | 9504 | Yoke for outer tube | 1 |
| 6 | 9505 | Stopper for outer tube | 1 |
| 7 | 9506 | Outer tube | 1 |
| 8 | 9507 | Inner tube | 1 |
| 9 | 9508 | Stopper for inner tube | 1 |
| 10 | 9509 | Yoke for inner tube | 1 |
| 11 | 9412 | Yoke stopper 1 3/8" | 2 |
| 12 | 9510 | Yoke with hole 1 3/4"-20 splines + yoke stopper 1 3/8" | 1 |
| 13 | 9511 | P.T.O. section, side with safety shear bolt, outer part, without protector | 1 |
| 14 | 9512 | P.T.O. section, side without safety shear bolt, inner part, without protector | 1 |
| 15 | 9513 | Adaptor (push pin) | 1 |
| 16 | 9514 | Yoke and shearplate | 1 |
| 17 | 9205 | Ball | 24 |
| 18 | 8071 | Grease fitting | 1 |
| 19 | 9515 | Safety shear bolt M14 x 70mm | 1 |
| 20 | 9218 | Bearing ring for outer guard tube | 1 |
| 21 | 9219 | Bearing ring for inner guard tube | 1 |
| 23 | 9519 | Outer shield | 1 |
| 24 | 9520 | Inner shield | 1 |
| 25 | 9521 | Complete shield | 1 |
| 26 | 8068 | Yoke stopper | 1 |

10

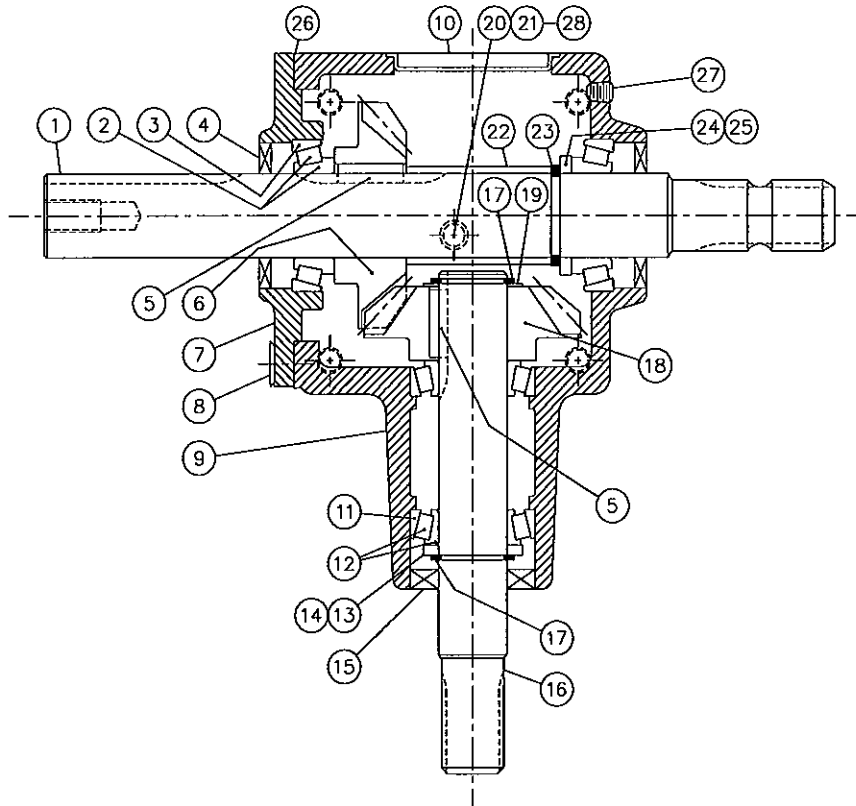
GEAR BOX # 8251 (T27D)



| REF. | PART # | DESCRIPTION | QTY |
|------|--------|---|-----|
| 1 | 8043 | Casing | 1 |
| 2 | 8044 | Roller bearing no. 30208 | 2 |
| 3 | 8045 | Inside circlip 80mm | 2 |
| 4 | 8046 | Oil seal 40 x 80 x 12mm | 2 |
| 5 | 8047 | Adjusting washer | 1 |
| 6 | 8048 | Gear Z18 | 1 |
| 7 | 8049 | Outside circlip 40mm | 1 |
| 8 | 8050 | Roller bearing no. 30207 | 1 |
| 9 | 8051 | Spacer ring | 1 |
| 10 | 8052 | Adjusting washer | 2 |
| 11 | 8053 | Oil seal 35 x 72 x 12mm | 1 |
| 12 | 8054 | Side shaft (1 1/4" - 19 splines) | 1 |
| 13 | 8055 | Inside circlip 72mm | 1 |
| 14 | 8056 | Ball bearing no. 6207 | 1 |
| 15 | 8057 | Outside circlip 35mm | 1 |
| 16 | 8058 | Adjusting washer | 1 |
| 17 | 8252 | Impeller shaft (11.575" & 1 3/8" - 6 splines) | 1 |
| 18 | 8060 | Gear Z-18 | 1 |
| 19 | 8061 | Gasket | 1 |
| 20 | 8062 | Bolt M10 x 14mm | 4 |
| 21 | 8063 | Cover | 1 |
| 22 | 8064 | Oil plug | 1 |
| 23 | 8065 | Oil filler plug | 1 |

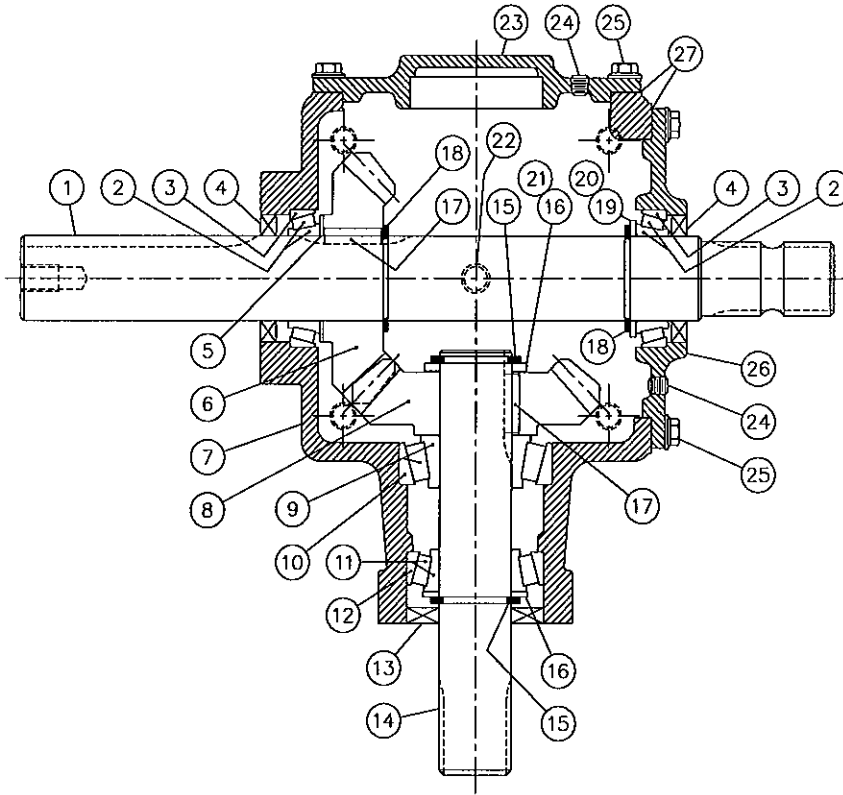
10

GEAR BOX # 8270



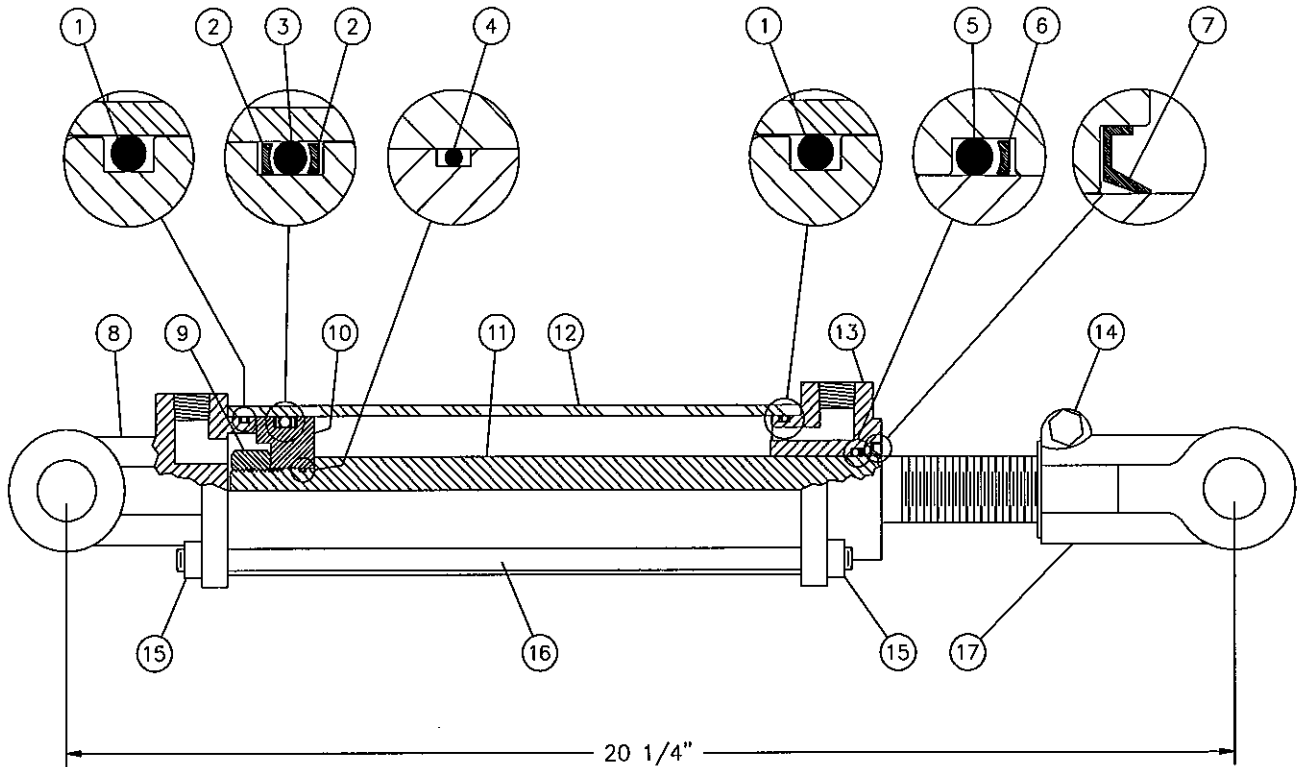
| REF. | PART # | DESCRIPTION | QTY |
|------|--------|--|-----|
| 1 | 8271 | Impeller shaft 1.625" et 1 3/8"-6 splines | 1 |
| 2 | 8272 | Roller bearing cone LM501349-N | 2 |
| 3 | 8273 | Roller bearing cup LM501310-N | 2 |
| 4 | 8274 | Oil seal 1.625" i.d. x 2.75" o.d. CR16364 | 2 |
| 5 | 8275 | Key 3/8" x 3/8" x 1.45" lg | 2 |
| 6 | 8276 | Gear 17 teeth - hole 1 5/8" | 1 |
| 7 | 8277 | Cover | 1 |
| 8 | 8278 | Bolt 1/2" NC x 1" lg C'S INK | 4 |
| 9 | 8279 | Casing | 1 |
| 10 | 8280 | Cover | 1 |
| 11 | 51415 | Roller bearing cup LM48510 | 2 |
| 12 | 51416 | Roller bearing cone LM48548-N | 2 |
| 13 | 8283 | Flat washer 1.375" d.i. x 0.179 thickness | 1 |
| 14 | 8284 | Shim 1.375" i.d. x 0.007 thickness | nd |
| 15 | 8285 | Oil seal 1.375" i.d. x 2.562" o.d. CR13876 | 1 |
| 16 | 8286 | Side shaft 1 1/4"-19 splines | 1 |
| 17 | 8287 | Snap ring | 2 |
| 18 | 8288 | Gear 17 teeth - hole 1 3/8" | 1 |
| 19 | 8289 | Flat washer 1.375" i.d. x 0.045" thickness | 1 |
| 20 | 8281 | Bushing 3/8" NPT to 1/4" NPT (top) | 1 |
| 21 | 8282 | T-vent 1/4" NPT (top) | 1 |
| 22 | 8290 | Spacer | 1 |
| 23 | 8291 | Snap ring | 1 |
| 24 | 8292 | Flat washer 1.625" d.i. x 2.25" o.d. | 1 |
| 25 | 8293 | Shim 1.625" d.i. x 0.007" thickness | nd |
| 26 | 8294 | Spacer 0.007" thickness | nd |
| 27 | 8295 | Oil plug 1/4" NPT | 1 |
| 28 | 8296 | Oil plug 3/8" NPT (bottom) | 1 |

GEAR BOX # 9522



| REF. | PART # | DESCRIPTION | QTY |
|------|--------|--|-----|
| 1 | 9523 | Impeller shaft 2" et 1 3/4"-20 splines | 1 |
| 2 | 9245 | Roller bearing cone LM104949 | 2 |
| 3 | 9246 | Roller bearing cup LM104912 | 2 |
| 4 | 9526 | Oil seal 2" i.d. x 3" o.d. CR19993 | 2 |
| 5 | 9527 | Washer 2" i.d. x 0.083" thickness | 1 |
| 6 | 9528 | Gear 22 teeth - hole 2" | 1 |
| 7 | 9529 | Casing | 1 |
| 8 | 9530 | Gear 22 teeth - hole 1 3/4" | 1 |
| 9 | 9531 | Roller bearing cone 3782 | 1 |
| 10 | 9532 | Roller bearing cup 3730 | 1 |
| 11 | 9249 | Roller bearing cone 25581 | 1 |
| 12 | 9250 | Roller bearing cup 25520 | 1 |
| 13 | 9535 | Oil sealé 1 3/4" i.d. x 3.265" o.d. | 1 |
| 14 | 9536 | Side shaft 1 3/4"-20 splines | 1 |
| 15 | 9537 | Snap ring | 2 |
| 16 | 9538 | Washer 1 3/4" i.d. x .179" thickness | 2 |
| 17 | 9539 | Key 3/8" x 3/8" x 1.46" lg | 2 |
| 18 | 9540 | Snap ring | 2 |
| 19 | 9541 | Washer 2" i.d. x 0.134 thickness | 1 |
| 20 | 9542 | Shim 2" i.d. x 0.007" thickness | nd |
| 21 | 9543 | Shim 1 3/4" d.i. x 0.007" thickness | nd |
| 22 | 9524 | Oil plug 1/2" NPT (top and bottom) | 2 |
| 23 | 9544 | Cover (closed) | 1 |
| 24 | 9525 | Oil plug 1/4" NPT | 2 |
| 25 | 9533 | Bolt 3/8" NC x 1" lg | 16 |
| 26 | 9545 | Cover (open) | 1 |
| 27 | 9534 | Spacer 0.007" thickness | nd |

CYLINDER 25TR08

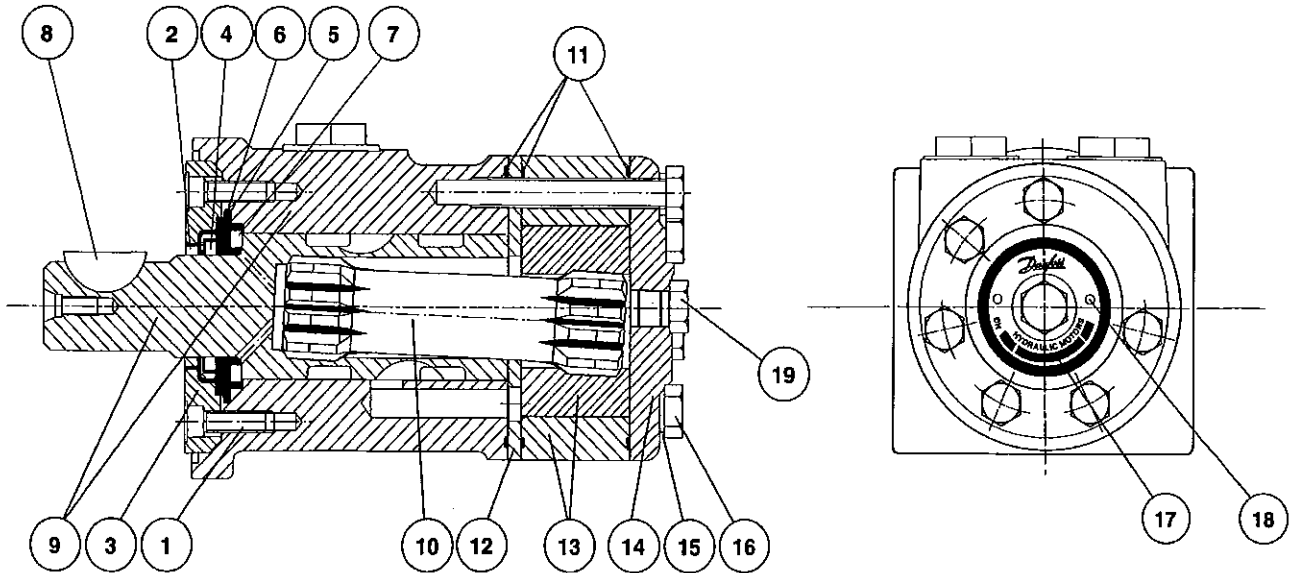


| REF. | PART # | DESCRIPTION | QTY |
|------|-------------|---|-----|
| 1 | See #RK25TR | O-ring 1/8" x 2 1/4" x 2 1/2" | 2 |
| 2 | See #RK25TR | Back-up 2 1/2" o.d. x 3/16 ø | 2 |
| 3 | See #RK25TR | O-ring 3/16" x 2 1/8" x 2 1/2" | 1 |
| 4 | See #RK25TR | O-ring 1/16" x 5/8" x 3/4" | 1 |
| 5 | See #RK25TR | O-ring 1/8" x 1 1/8" x 1 3/8" | 1 |
| 6 | See #RK25TR | Back-up 1 3/8" o.d. x 1/8" ø | 1 |
| 7 | See #RK25TR | Wiper 1 1/8" i.d. x 1 5/8" o.d. | 1 |
| 8 | 492401 | Yoke (for 2 1/2" tube) | 1 |
| 9 | Std. | Nut 3/4" NF | 1 |
| 10 | 4924-31 | Piston 2 1/2" ø | 1 |
| 11 | 492028 | Piston rod 1 1/8" | 1 |
| 12 | 491668 | Cylinder body 2 1/2" ø | 1 |
| 13 | 492421 | Head (for 2 1/2" tube) | 1 |
| 14 | Std. | Bolt 3/8" NC x 2 1/4" + nut | 1 |
| 15 | Std. | Nut 3/8" NC | 8 |
| 16 | Std. | Threaded rod 3/8" NC x 12" lg | 4 |
| 17 | 458599 | Yoke (for 1 1/8" rod) | 1 |
| NI* | 8183 | Pin 1" ø + cotter pin | 2 |
| NI* | RK25TR | Repair kit for cylinder 2 1/2" (includes # 1, 2, 3, 4, 5, 6, & 7) | 1 |

*NI = NOT ILLUSTRATED

10

HYDRAULIC MOTOR # DH 250 & DH 315



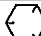
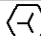
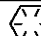
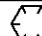
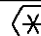


| REF. | CODE # | DESCRIPTION | QTY | |
|------|----------|---|--------|----------|
| | | | DH 250 | DH 315 |
| 1 | 681X1961 | Screw M5 x 16mm | 6 | 6 |
| 2 | 151-1313 | Dust seal ring | 1 | 1 |
| 3 | 151-1827 | Spigot flange | 1 | 1 |
| 4 | 633B3385 | Shaft seal BAKDH ring | 1 | 1 |
| 5 | 633B1333 | O-ring | 1 | 1 |
| 6 | 151-1608 | Bearing race | 1 | 1 |
| 7 | 151-1458 | Axial needle bearing | 1 | 1 |
| 8 | 682L9054 | Woodruff key | 1 | 1 |
| 9 | ----- | Housing and output shaft | | not sold |
| 10 | 151-2649 | Cardan shaft | 1 | - |
| 10 | 151-2650 | Cardan shaft | - | 1 |
| 11 | 633B1173 | O-ring | 3 | 3 |
| 12 | 151-1713 | Distributor plate | 1 | 1 |
| 13 | 151-1193 | Gear wheel set | 1 | - |
| 13 | 151-1186 | Gear wheel set | - | 1 |
| 14 | 151-2641 | End cover | 1 | 1 |
| 15 | 684X2481 | Washer | 6 | 6 |
| 16 | 681X0184 | Screw M8 x 1.25mm Din 931 x 60mm lg | 6 | - |
| 16 | 681X0186 | Screw M8 x 1.25mm Din 931 x 70mm lg | - | 6 |
| 17 | 151A0415 | Name plate | 1 | 1 |
| 18 | 681Z1011 | Drive screw | 2 | 2 |
| 19 | 631X2013 | Drain plug 7/16"-20 UNF | 1 | 1 |
| NI* | 151-1273 | Set of seals | 1 | 1 |






*NI = NOT ILLUSTRATED

TORQUE CHART

TORQUE SPECIFICATION TABLE

| Thread UNC and UNF | | Grade 2  | | | | Grade 5    | | | | Grade 8*    | | | |
|--------------------|-------|---|-----------------|--------------------|--------------------|--|-----------------|--------------------|--------------------|--|-----------------|--------------------|--------------------|
| Bolt size | | Torque | | | | Torque | | | | Torque | | | |
| Inches | mm | Pound feet min. | Pound feet max. | Newton meters min. | Newton meters max. | Pound feet min. | Pound feet max. | Newton meters min. | Newton meters max. | Pound feet min. | Pound feet max. | Newton meters min. | Newton meters max. |
| 1/4 | 6.35 | 5 | 6 | 6.8 | 8.13 | 9 | 11 | 12.2 | 14.9 | 12 | 15 | 16.3 | 30.3 |
| 5/16 | 7.94 | 10 | 12 | 13.6 | 16.3 | 17 | 20.5 | 23.1 | 27.8 | 24 | 29 | 32.5 | 39.3 |
| 3/8 | 9.53 | 20 | 23 | 27.1 | 31.2 | 35 | 42 | 47.5 | 57.0 | 45 | 54 | 61.0 | 73.2 |
| 7/16 | 11.11 | 30 | 35 | 40.7 | 47.4 | 54 | 64 | 73.2 | 86.8 | 70 | 84 | 94.9 | 113.9 |
| 1/2 | 12.70 | 45 | 52 | 61.0 | 70.5 | 80 | 96 | 108.5 | 130.2 | 110 | 132 | 149.2 | 179.0 |
| 9/16 | 14.29 | 65 | 75 | 88.1 | 101.6 | 110 | 132 | 149.2 | 179.0 | 160 | 192 | 217.0 | 260.4 |
| 5/8 | 15.88 | 95 | 105 | 128.7 | 142.3 | 150 | 180 | 203.4 | 244.1 | 220 | 264 | 298.3 | 358.0 |
| 3/4 | 19.05 | 150 | 185 | 203.3 | 250.7 | 270 | 324 | 366.1 | 439.3 | 380 | 456 | 515.3 | 618.3 |
| 7/8 | 22.23 | 160 | 200 | 216.8 | 271.0 | 400 | 480 | 542.4 | 650.9 | 600 | 720 | 813.6 | 976.3 |
| 1 | 25.40 | 250 | 300 | 338.8 | 406.5 | 580 | 696 | 786.5 | 943.8 | 900 | 1080 | 1220.4 | 1464.5 |
| 1 1/8 | 25.58 | - | - | - | - | 800 | 880 | 1084.8 | 1193.3 | 1280 | 1440 | 1735.7 | 1952.6 |
| 1 1/4 | 31.75 | - | - | - | - | 1120 | 1240 | 1518.7 | 1681.4 | 1820 | 2000 | 2467.9 | 2712.0 |
| 1 3/8 | 34.93 | - | - | - | - | 1460 | 1680 | 1979.8 | 2278.1 | 2380 | 2720 | 3227.3 | 3688.3 |
| 1 1/2 | 38.10 | - | - | - | - | 1940 | 2200 | 2630.6 | 2983.2 | 3160 | 3560 | 4285.0 | 4827.4 |

* Thick nuts must be used with grade 8 bolts.

| Size of screw | Thread | Pitch (mm) | Grade 4T   | | | | Grade 7T  | | | | Grade 8T   | | | |
|---------------|--------|------------|--|-----------------|--------------------|--------------------|--|-----------------|--------------------|--------------------|--|-----------------|--------------------|--------------------|
| | | | Torque | | | | Torque | | | | Torque | | | |
| | | | Pound feet min. | Pound feet max. | Newton meters min. | Newton meters max. | Pound feet min. | Pound feet max. | Newton meters min. | Newton meters max. | Pound feet min. | Pound feet max. | Newton meters min. | Newton meters max. |
| M6 | UNC | 1.00 | 3.6 | 5.8 | 4.9 | 7.9 | 5.8 | 9.4 | 7.9 | 12.7 | 7.2 | 10 | 9.8 | 13.6 |
| M8 | UNC | 1.25 | 7.2 | 14 | 9.8 | 19 | 17 | 22 | 23 | 29.8 | 20 | 26 | 27.1 | 35.2 |
| M10 | UNC | 1.5 | 20 | 25 | 27.1 | 33.9 | 34 | 40 | 46.1 | 54.2 | 38 | 46 | 51.5 | 62.3 |
| M12 | UNC | 1.75 | 28 | 34 | 37.9 | 46.1 | 51 | 59 | 69.1 | 79.9 | 57 | 66 | 77.2 | 89.4 |
| M14 | UNC | 2.0 | 49 | 56 | 66.4 | 75.9 | 81 | 93 | 109.8 | 126 | 96 | 109 | 130.1 | 147.7 |
| M16 | UNC | 2.0 | 67 | 77 | 90.8 | 104.3 | 116 | 130 | 157.2 | 176.2 | 129 | 145 | 174.8 | 196.5 |
| M18 | UNC | 2.0 | 88 | 100 | 119.2 | 136 | 150 | 168 | 203.3 | 227.6 | 175 | 194 | 237.1 | 262.9 |
| M20 | UNC | 2.5 | 108 | 130 | 146.3 | 176.2 | 186 | 205 | 252 | 277.8 | 213 | 249 | 288.6 | 337.4 |
| M8 | UNF | 1.0 | 12 | 17 | 16.3 | 23 | 19 | 27 | 25.7 | 36.6 | 22 | 31 | 29.8 | 42 |
| M10 | UNF | 1.25 | 20 | 29 | 27.1 | 39.3 | 35 | 47 | 47.4 | 63.7 | 40 | 52 | 54.2 | 70.5 |
| M12 | UNF | 1.25 | 31 | 41 | 42 | 55.6 | 56 | 68 | 75.9 | 92.1 | 62 | 75 | 84 | 101.6 |
| M14 | UNF | 1.5 | 52 | 64 | 70.5 | 86.7 | 90 | 106 | 122 | 143.6 | 107 | 124 | 145 | 168 |
| M16 | UNF | 1.5 | 69 | 83 | 93.5 | 112.5 | 120 | 138 | 162.6 | 187 | 140 | 158 | 189.7 | 214.1 |
| M18 | UNF | 1.5 | 100 | 117 | 136 | 158.5 | 177 | 199 | 239.8 | 269.6 | 202 | 231 | 273.7 | 313 |
| M20 | UNF | 1.5 | 132 | 150 | 178.9 | 203.3 | 206 | 242 | 279.1 | 327.9 | 246 | 289 | 333.3 | 391.6 |

Use the above torques when special torque is not given.

NOTE: These values apply to fasteners as received from supplier, dry, or when lubricated with normal engine oil. They do not apply if extreme pressure lubricants are used.

WARRANTY

PRONOVOST warrants this product to the initial purchaser for the period of one year from the date of purchase against defects in materials and workmanship.

We will replace or repair defective parts free of charge if they are returned to our plant in St-Tite, Quebec, Canada.

Transportation charges are the responsibility of the customer. This warranty is not transferable.

Hydraulic cylinders and motors are covered by the manufacturer of these items.

All PRONOVOST spare parts purchased are covered by a three (3) month warranty.

This warranty becomes void and nul if the equipment is modified, breaks down as the result of an accident, is not operated according to manufacturer's recommendations, damaged by negligence or if maintenance has not been carried out as specified.

Our obligation is limited to the replacement or repair of the defective part. PRONOVOST accepts no responsibility for direct or indirect consequential damages of any kind.

12



Ce manuel est aussi disponible en français.
Veuillez téléphoner.



LES MACHINERIES PRONOVOST INC.
260, route 159,
Saint-Tite, Quebec, Canada, G0X 3H0
Tel.: (418) 365-7551, Fax: (418) 365-7954