

PRONOVOST

OWNER'S MANUAL



Snowblowers Models

P-540 & P-540TRC

P-620 & P-620TRC

P-680 & P-680TRC

P-720 & P-720TRC

Copyright © Les Machineries Pronovost Inc., 1996

All rights reserved.
Printed in Canada.

TABLE OF CONTENTS

| Section | Item | Page |
|---------|--|-----------|
| 1 | Introduction | 5 |
| 2 | Safety | 6 |
| | General Safety | 6 |
| | Safety in Operation | 6 |
| | Safety with Maintenance | 7 |
| | Safety in Transport | 7 |
| | Safety in Storage | 7 |
| 3 | Decals | 8 |
| | Safety Decals | 8 |
| | Maintenance Decals | 10 |
| 4 | Assembly | 11 |
| | General assembly | 11 |
| | Manual Chute Kit | 12 |
| | Hydraulic Chute Kit: Cylinder | 13 |
| | Hydraulic Chute Kit: Motor | 14 |
| 5 | Start-up | 15 |
| | Basic Start-up Procedures | 15 |
| 6 | Maintenance | 16 |
| 7 | Storage | 17 |
| 8 | Trouble Shooting | 18 |
| 9 | Specifications | 20 |
| 10 | Parts List | 21 |
| | Snowblowers P-540, P-620, P-680, P-720 | 21 |
| | Snowblowers P-540TRC, P-620TRC, P-680TRC, P-720TRC | 24 |
| | Manual Chute Kit M-4864 | 27 |
| | Hydraulic Chute Kit: Cylinder H-4864 | 28 |
| | Hydraulic Chute Kit: Motor SP-4864 | 29 |
| | Semi-industrial Chute PSI-4864 | 30 |
| | P.T.O. Shaft 6408 | 31 |
| | P.T.O. Shaft 6248 | 32 |
| | P.T.O. Shaft 8114 | 33 |
| | Gear box 6451 | 34 |
| | Gear Box 8251 | 35 |
| | Cylinder 25TR04 | 36 |
| | Hydraulic Motor DH 100, DH 125 & DH 250 | 37 |
| 11 | Torque Chart | 38 |
| 12 | Warranty | 39 |



INTRODUCTION

1

CONGRATULATIONS!

Thank you for choosing PRONOVOST. We are confident this equipment will meet your requirements in terms of quality, performance and reliability.

This manual was prepared to assist you in the safe operation of your new Snowblower. It contains important information which will help you achieve excellent returns with your Snowblower for years to come.

Please read this manual completely before operating your Snowblower and keep it for future reference.

Before starting the machine, you or any other person who will be operating the Snowblower must familiarize yourself with the safety recommendations and the operating instructions. Please read carefully and be sure to understand and follow all recommendations and procedures.

In this manual, the right and left sides are identified as shown on Figure 1.

If you require additional information on your Snowblower, please contact your PRONOVOST Dealer.

NOW take a moment to enter the model, serial number and the date of purchase of your Snowblower in the space provided.

When ordering parts from your Dealer, please refer to these numbers for a fast and efficient service. Use PRONOVOST parts for replacement.

The model and serial numbers are on the name plate shown on Fig. 1.

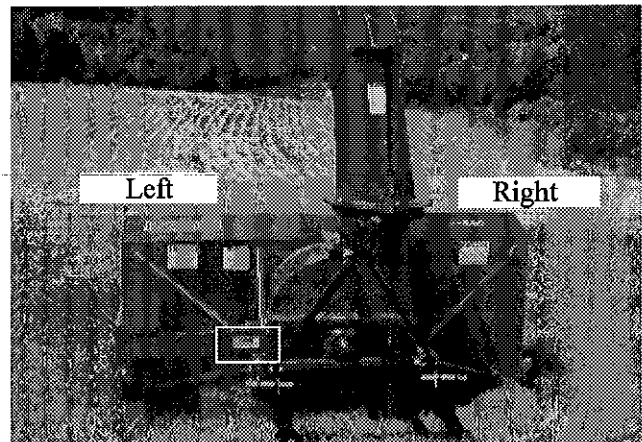


Figure 1

MODEL: _____

SERIAL NO: _____

DATE OF PURCHASE: _____

SAFETY

GENERAL SAFETY

2

WHEN YOU SEE THIS SYMBOL



ATTENTION!

**BE ALERT
YOUR SAFETY IS INVOLVED**

This symbol «**SAFETY ALERT**» is used in this manual and on the safety decals on the Snowblower. It warns you of the possibility of danger. Carefully read, understand and follow all safety recommendations before operating the Snowblower.

- 1) Careful operation is the best assurance against accidents. Carefully read this manual and follow all recommendations before operating your Snowblower. It is the owner's responsibility to make sure that anyone who will operate the Snowblower will read this manual before operating the equipment.
- 2) Familiarize yourself with all controls and always be ready to stop the Snowblower quickly in case of emergency.
- 3) Never let a child operate the Snowblower.
- 4) Do not modify the Snowblower. Any non authorized modification may affect the efficiency and/or safety of the equipment and will automatically void the warranty.
- 5) Never operate the Snowblower with defective parts or if damaged in any way. Have it repaired before operating.
- 6) Make sure all fasteners are in place and properly secured or tightened. Refer to torque chart on page 38.
- 7) Avoid wearing loose fitting clothing when working with the Snowblower. These could get entangled in moving parts of the equipment and cause accidents.
- 8) Prolonged exposure to noise may hamper hearing. Protect yourself by wearing adequate protection devices.
- 9) Hydraulic fluids under pressure can damage your skin. Do not use your hands to locate a leak.
- 10) Before the beginning of the snow season, inspect all areas where the Snowblower will be used and remove any object which may cause an accident and/or damage the equipment.
- 11) Never operate your Snowblower in poor visibility or without proper lighting conditions.

SAFETY IN OPERATION

- 1) Be sure there are no obstructions around the equipment and that no one stands near the equipment when in operation.
- 2) Do not operate an engine in a confined or non ventilated area.
- 3) Do not perform any adjustments, cleaning, maintenance or repairs with the engine running. The engine must be stopped and the P.T.O. disengaged. Preferably remove the key from the ignition.
- 4) Wear adequate clothing when working in cold or windy conditions.
- 5) Adjust skid shoes for proper ground clearance of scraper blade, especially in rough terrain or soft ground conditions.
- 6) Before operating, make sure the P.T.O. is properly installed and secured.
- 7) Before starting-up the Snowblower, make sure the auger and drum areas are free of ice.
- 8) Put P.T.O. control in neutral position before starting engine.
- 9) Keep hands, feet and clothing away from moving parts of the Snowblower. Stay away from the discharge chute.

SAFETY (cont'd)

- 10) Before unplugging the chute, always disengage the P.T.O., stop the engine and relieve all hydraulic pressures.
- 11) Do not operate in excessive inclined conditions. Be careful when turning in slopes.
- 12) Never operate your Snowblower with missing guards or without protective devices in place.
- 13) Do not operate your Snowblower near buildings, windows or other vehicles without prior and proper adjustment of the chute deflector.
- 14) Never aim discharge chute towards people or animals. This may cause serious injuries.
- 15) Always reduce operating speed in slippery conditions.
- 16) Be careful when backing-up, make sure you have good visibility.
- 17) Always be on the lookout for objects which may enter the Snowblower.
- 18) If undue vibrations are felt, disengage the P.T.O., stop the motor and look for the cause of the vibration. Vibration is usually the indication of a problem.
- 19) At the end of the operation, disengage the P.T.O., lower the Snowblower, put transmission in neutral, apply parking brake, stop engine and remove the key from the ignition.

SAFETY WITH MAINTENANCE

- 1) Perform the Snowblower maintenance according to recommendations contained in this manual.

- 2) Stop engine and relieve all hydraulic pressures before doing inspection, maintenance or repairs.
- 3) Never perform any work under the Snowblower while it is supported only by the tractor's hydraulic system. It must be completely supported by wooden blocks or other safe means.

2

SAFETY IN TRANSPORT

- 1) On public roads, use proper safety lights and check local regulations.
- 2) Be alert while driving on the road. Never carry passengers.
- 3) Always disengage P.T.O. while moving from one area of work to another.
- 4) It is recommended to use both brake pedals simultaneously for better control.
- 5) The recommended road speed should be such as to maintain full control over steering and braking.
- 6) Be careful while backing up, make sure you have good visibility.

SAFETY IN STORAGE

- 1) Provide adequate supports to prevent any accidental overturning of the Snowblower.
- 2) Do not let children play in the area where the Snowblower is stored.

DECALS

SAFETY DECALS

The safety decals are affixed wherever special safety precautions are indicated. Locate them on the machine and read them carefully. If a decal is damaged, lost or illegible, install a new one. The following photos indicate where each one must be installed.

3



Figure 3

⚠ ATTENTION

- 1- FOR SAFE OPERATION, FOLLOW OPERATING INSTRUCTIONS IN OPERATOR'S MANUAL.
- 2- KEEP HANDS, FEET AND CLOTHINGS AWAY FROM POWER DRIVEN PARTS.
- 3- STOP ENGINE BEFORE LEAVING THE EQUIPMENT.
- 4- MACHINE HAS TO BE COMPLETELY STOPPED BEFORE STARTING TO ADJUST OR LUBRICATE.
- 5- KEEP PEOPLE AND PETS AT SAFE DISTANCE FROM MACHINE.
- 6- KEEP ALL GUARDS AND SHIELDS IN PLACE.

- 1- POUR UN FONCTIONNEMENT SÉCURITAIRE SUIVRE LES INSTRUCTIONS DANS LE MANUEL D'OPÉRATION.
- 2- GARDER LES MAINS, PIEDS ET VÊTEMENTS ÉLOIGNÉS DES ÉLÉMENTS MOBILES OU ROTATIFS.
- 3- AVANT DE QUITTER LA MACHINE ARRÊTER LE MOTEUR.
- 4- ARRÊTER COMPLÈTEMENT LA MACHINE POUR EFFECTUER L'ENTRETIEN ET L'AJUSTEMENT.
- 5- GARDER LES GENS ET LES ANIMAUX À UNE DISTANCE SÉCURITAIRE.
- 6- GARDER TOUS LES ÉCRANS PROTECTEUR EN PLACE.

PA 93-01

Figure 2
Decal A

Part no.: A102

⚠ DANGER

TO AVOID SERIOUS INJURIES, KEEP CLEAR OF EQUIPMENT WHILE IN OPERATION.

POUR ÉVITER DES BLESSURES GRAVES SE TENIR LOIN DE CET ÉQUIPEMENT LORSQU'IL EST EN MARCHÉ.

PD 93-03

Figure 4
Decal B

Part no.: A101

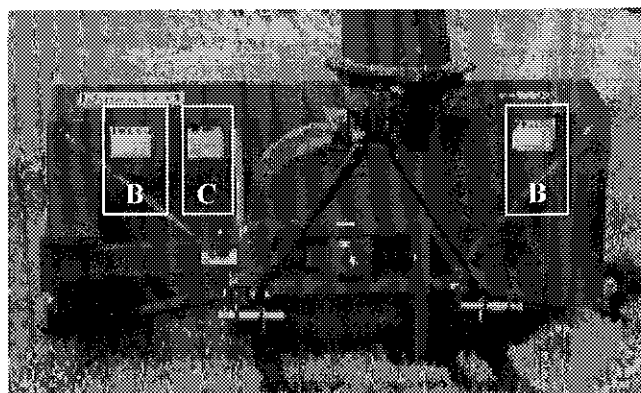


Figure 5

DECALS (cont'd)

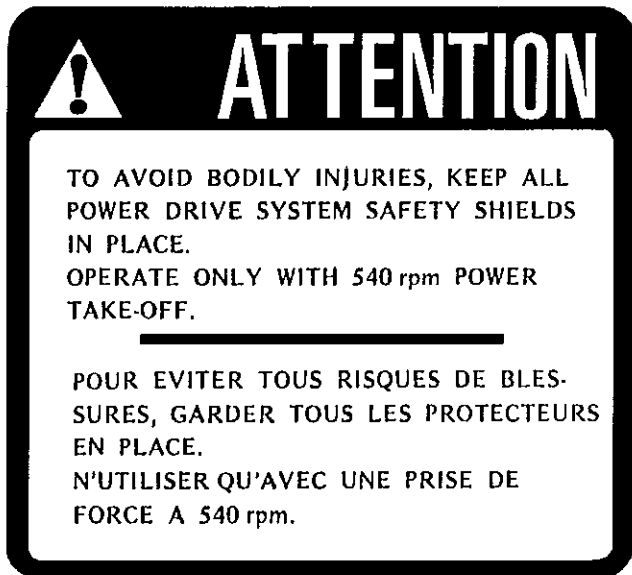


Figure 6
Decal C

Part no.: A107



Figure 7
Decal D

Part no.: A103

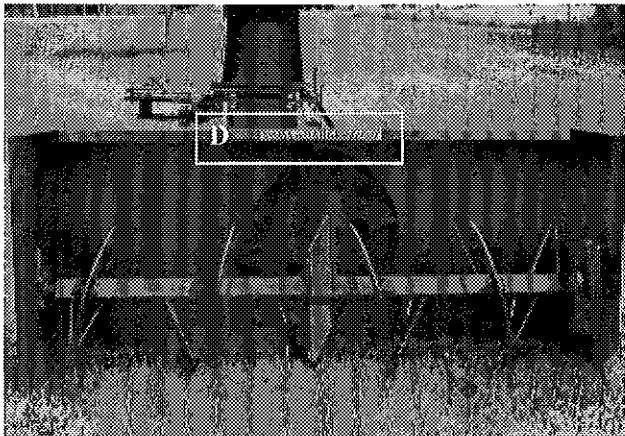


Figure 8

Decal E in Fig. 9 is located directly on the P.T.O. shaft. It is not visible when the safety shield is in place. It must never be visible when you operate the equipment.



3

Figure 9
Decal E

Part no.: A108

DECALS (cont'd)

3



Figure 10

Decal F

Part no.: A 109

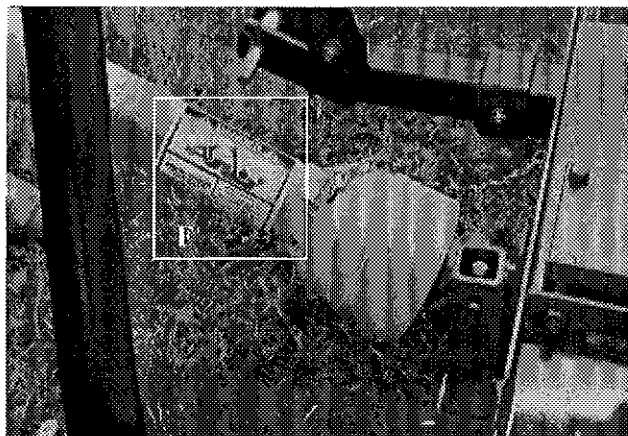
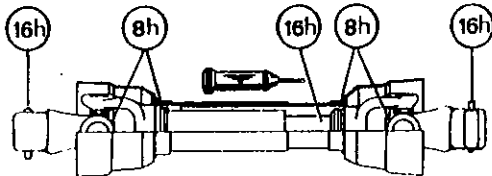


Figure 11

MAINTENANCE DECALS

The maintenance decals indicate the points requiring lubrication. Refer to maintenance section for more details.

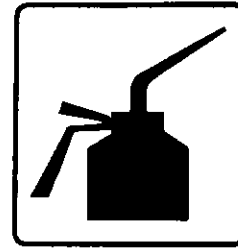


Figure 12

Part no.: A 105

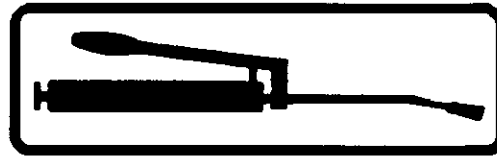


Figure 13

Part no.: A 106



Figure 14

Decal G

Part no.: A104

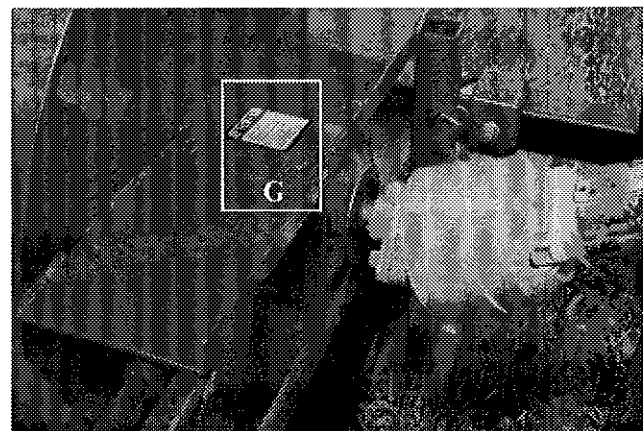


Figure 15

ASSEMBLY

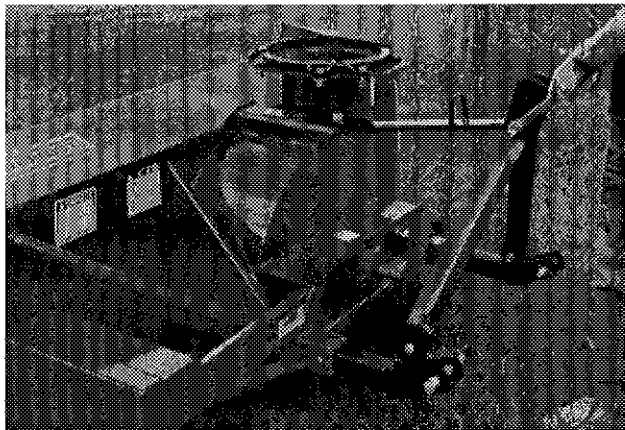


Figure 16



Figure 17



Figure 18

ASSEMBLY

- 1) The Snowblower is shipped partly assembled.
- 2) Install 3-point system according to the model of your Snowblower. (See section 10 for parts numbers). Use the holes most convenient to the type of tractor used (Fig. 16).
- 3) Install P.T.O. shaft with the shear pin end onto the Snowblower gear box (Fig. 17). Then attach safety shield support chain as shown (Fig. 18).
WARNING: The telescoping tubes of the drive shaft must never be allowed to bottom out while maintaining a minimum overlap of 6 inches.
- 4) If you install a hydraulic cylinder on the chute deflector, use model 25TR04 cylinder.
- 5) For the installation of the chute rotation mechanism, please refer to page 12 through 14, according to the type used.

4

ASSEMBLY (cont'd)

4

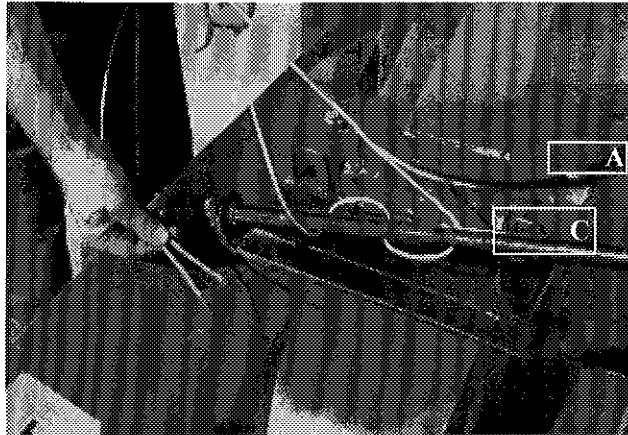


Figure 19

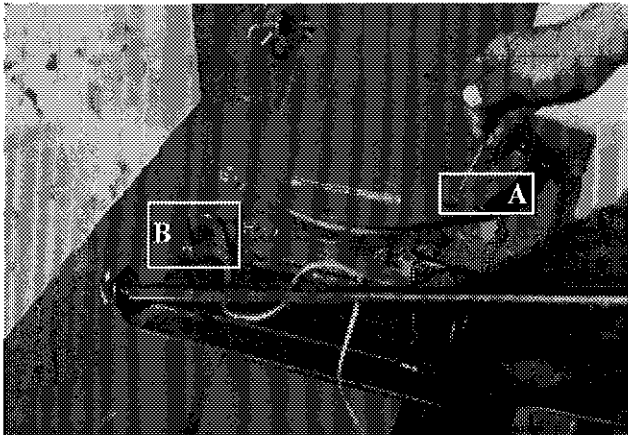


Figure 20

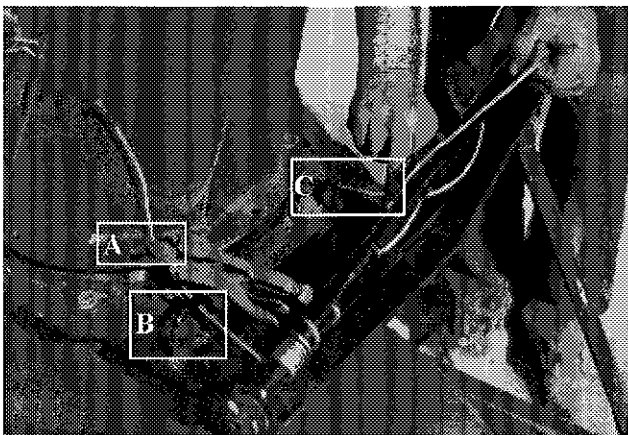


Figure 21

MANUAL CHUTE ROTATION

- 1) Install chute and kit as shown on page 27.
- 2) **Figure 19:** Thread the steel cable through the three holes in the shaft and arrange to have both cable ends of equal length. Turn the chute manually until the cable anchor hole (A) is near cable guide (C).
- 3) **Figure 20:** Route cable through guide (B) and clockwise around the chute. Insert it through one of the anchor holes (A) and secure it temporarily with locking pliers.
- 4) **Figure 21:** Turn crank clockwise until anchor hole (A) is near cable guide (B). Route the other end of the cable through guide (C) and counterclockwise around the chute.
- 5) **Figure 22:** Insert cable in the free anchor hole and secure both cables with the clamp provided.

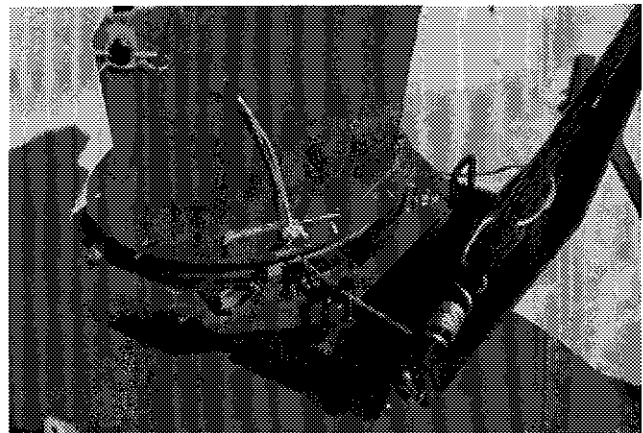


Figure 22

ASSEMBLY (cont'd)

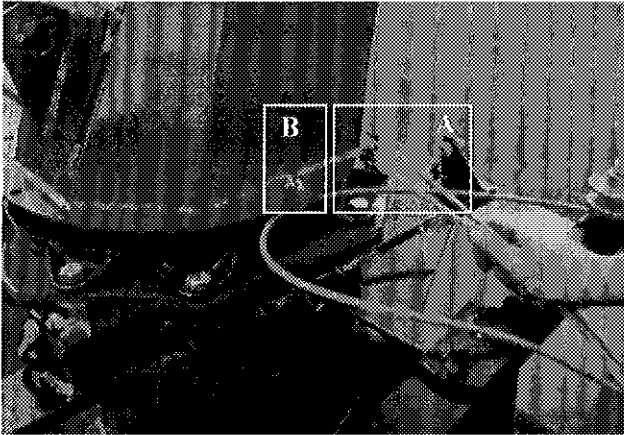


Figure 23

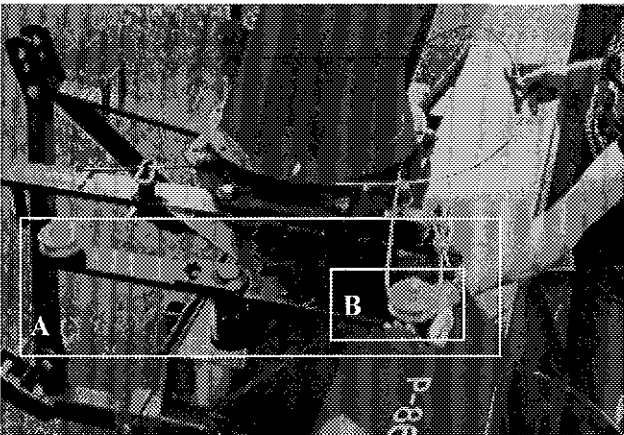


Figure 24

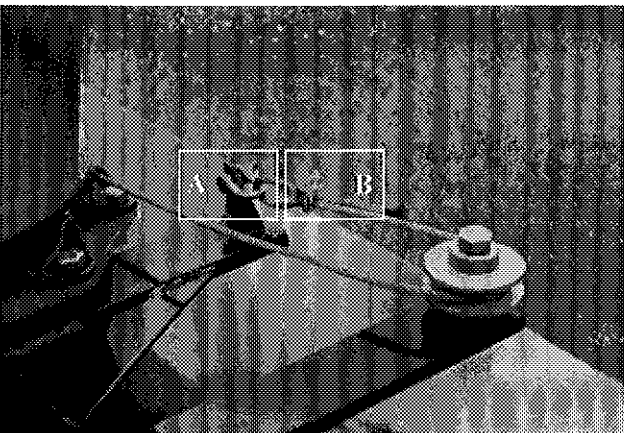


Figure 25

HYDRAULIC CHUTE ROTATION *Cylinder*

- 1) Install chute and kit as shown on page 28. Position chute with discharge towards the front of the Snowblower.
- 2) Place steel cable with both ends equal (A Fig. 23) and secure solidly with wire clamp provided (B Fig. 23).
- 3) Place pivot (A Fig. 24) perpendicular to the front of the Snowblower.
- 4) Pull cable end from the gearbox side, go around the chute, then around pulley (B Fig. 24), loop through clevis (A Fig. 25) and secure with cable clamp (B Fig. 25).
- 5) Pull other end of cable counterclockwise around the chute, then around pulley (A Fig. 26), loop through clevis and secure with wire clamp.
- 6) Make sure the cable is tight.

4

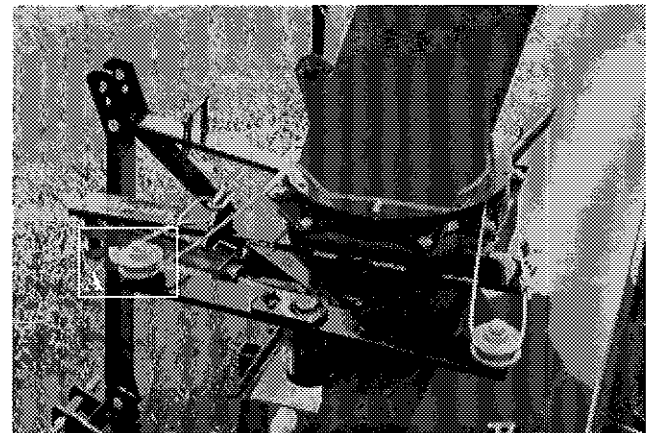
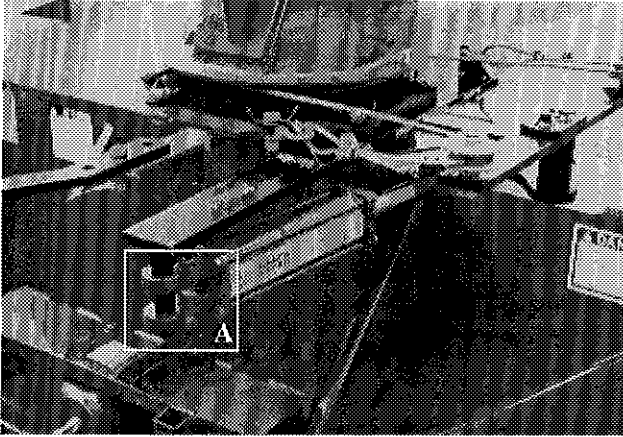


Figure 26

ASSEMBLY (cont'd)



4 Figure 27

- 7) Install hydraulic cylinder with fittings facing down. Install end A of cylinder body as shown (Fig. 27) and install pin to secure it in place. Connect rod end to pivot plate.

HYDRAULIC CHUTE ROTATION Motor

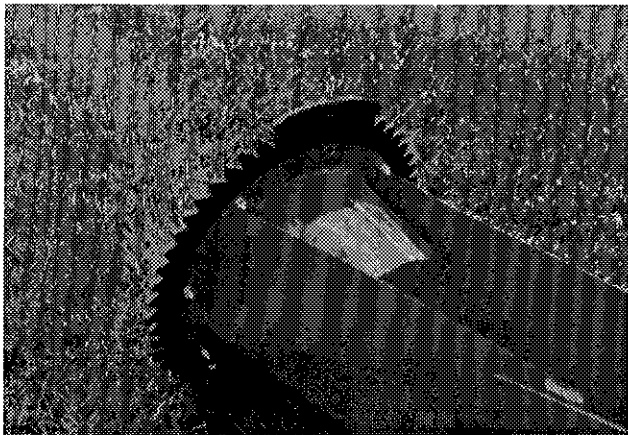


Figure 28

- 1) Bolt the 37 tooth ring-gear onto chute flange with plain segment lined up with chute discharge opening (Fig. 28).
- 2) Install U-shaped UHMW piece, place chute on Snowblower and secure with retaining brackets and bolts provided.
- 3) Install motor mounting plate, motor and 9 tooth gear. See page 29 for bolt dimensions (Fig. 29).
- 4) The thickness of the 9 tooth gear is slightly more than the ring-gear. Make sure it exceeds on both sides of the ring gear.
- 5) Using the take-up screws, adjust gear to mesh without bottoming.
- 6) Install guard (Fig. 30).

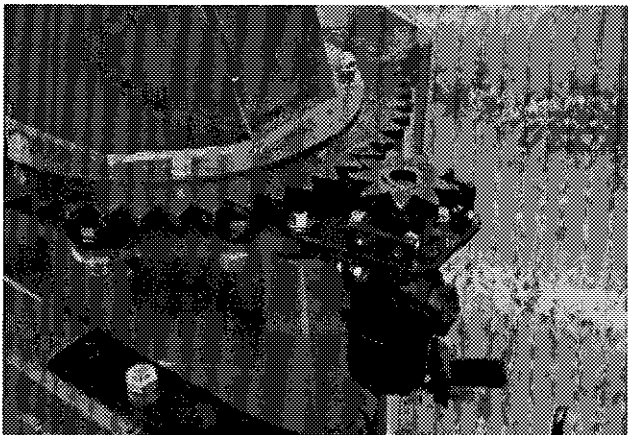


Figure 29

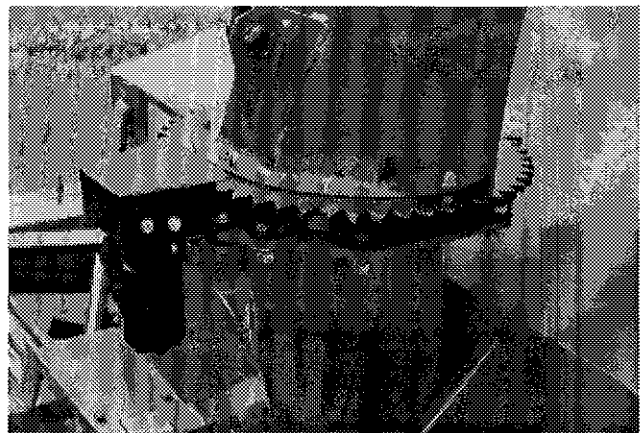


Figure 30

STARTING-UP



Figure 31

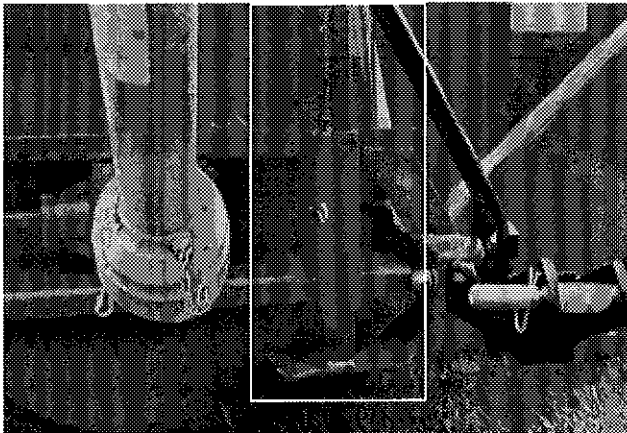


Figure 32

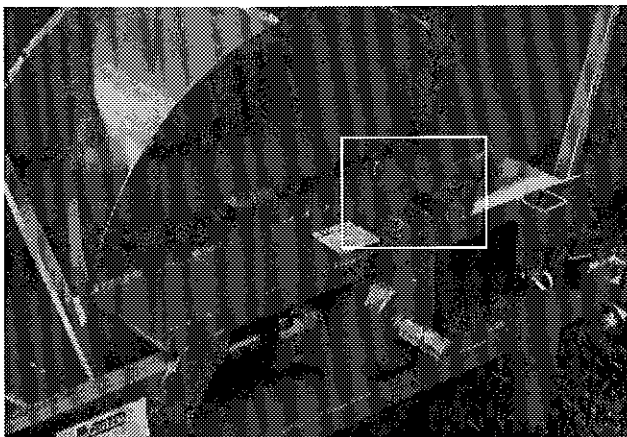


Figure 33

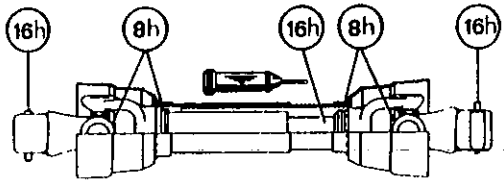
START-UP PROCEDURES

- 1) Check oil level in gearbox. Use S.A.E. W90 gear box oil.
- 2) Lubricate all points with a good quality multipurpose grease.
- 3) Check chain take-up adjustment. The spring maintaining the tension must be compressed to a length between 3" and 3½".
- 4) Verify for adequate tightness of all fastening devices. Refer to torque chart on page 38.
- 5) Adjust skid shoes according to ground conditions (Fig. 31).
- 6) Following the installation of the Snowblower on the tractor, **do not forget** to lift the storage support (Fig. 32).
- 7) Make sure of a 540 RPM input to your Snowblower.
- 8) Check impeller adjustment. The tip of the blades should be approximately 1/8" to 3/16" from the discharge wall of the drum. If necessary, adjust with the take-up screws provided (Fig. 33).

5

MAINTENANCE

- 1) Wipe off all grease fittings with a clean cloth before adding grease in order to avoid injecting dirt and sand.
- 2) Repair or replace damaged grease fittings.
- 3) Lubricate all grease fittings every 10 hours of operation.
- 4) Oil drive chain every 8 hours of operation.
- 5) Lubricate P.T.O. shaft as indicated below:
 - 6) Check oil level in gear box once a month. If necessary add oil.
 - 7) Check tension of drive chain every 25 hours of operation and adjust if necessary.
 - 8) Check for tightness of bearing collars every 50 hours of operation.
 - 9) Change gearbox oil once a year. Use gear box oil S.A.E. W90 rated API, class GL-5.
 - 10) Check all nuts and bolts once a year. If necessary use torque chart on page 38.
 - 11) Always use Grade 5 shear bolts.



Pull out the P.T.O. and lubricate between the two tubes with low temperature grease.

6

STORAGE

- 1) Store the Snowblower in a cool, dry place.
- 2) Support the Snowblower with wooden blocks.
- 3) Keep all piston rods in the retracted position. This will assure better protection against the elements.
- 4) Clean your Snowblower.
- 5) Thoroughly inspect all parts of the Snowblower. Replace or repair worn or defective parts.
- 6) Touch-up or repaint if necessary.
- 7) Lubricate all points before storage.

TROUBLESHOOTING

P.T.O. SHAFT

| PROBLEM | POSSIBLE CAUSE | CORRECTION |
|--|---|--|
| <ul style="list-style-type: none"> - Premature wear of U-joints and/ or bluish color of cross journals. | <ul style="list-style-type: none"> - Insufficient lubrication. - Excessive working angle. | <ul style="list-style-type: none"> - Follow lubrication recommendations. - Replace defective U-joints. - Make sure the Snowblower inlet face is perpendicular to the ground and if possible readjust 3-point hitch in order to position the Snowblower further away from tractor. |
| <ul style="list-style-type: none"> - Gripping or premature wear of telescoping members. | <ul style="list-style-type: none"> - Too much sliding under load. - Tube overlap too-short: minimum recommended is 6". - Insufficient lubrication. - Contaminants (sand, etc.). | <ul style="list-style-type: none"> - Avoid raising Snowblower while in operation. - Readjust 3-point hitch in order to position the snowblower closer to the tractor. - Follow lubrication recommendations. - Replace defective telescopic members. |
| <ul style="list-style-type: none"> - Damaged or jammed locking pin or bolt. | <ul style="list-style-type: none"> - Pin or orifice contaminated by sand, ice, etc. - Telescoping members too long, exerting pressure on locking device. | <ul style="list-style-type: none"> - Clean and grease. - Readjust 3-point hitch in order to position the Snowblower further away from tractor or shorten tubes. |
| <ul style="list-style-type: none"> - Premature wear of guard tube bearing ring. | <ul style="list-style-type: none"> - Lack of lubrication. - Wrong installation of guard chain. - Part of the guard in contact with the equipment. | <ul style="list-style-type: none"> - Follow lubrication instructions. - Adjust chain to prevent interference between guard & equipment. - Replace worn or damaged bearing rings. |
| <ul style="list-style-type: none"> - Cut or deformed safety guard tubes. | <ul style="list-style-type: none"> - Tubes in contact with the equipment. | <ul style="list-style-type: none"> - Eliminate any interference between tubes and equipment or tractor. - Replace damaged tubes. |

8

TROUBLESHOOTING (cont'd)

SNOWBLOWER

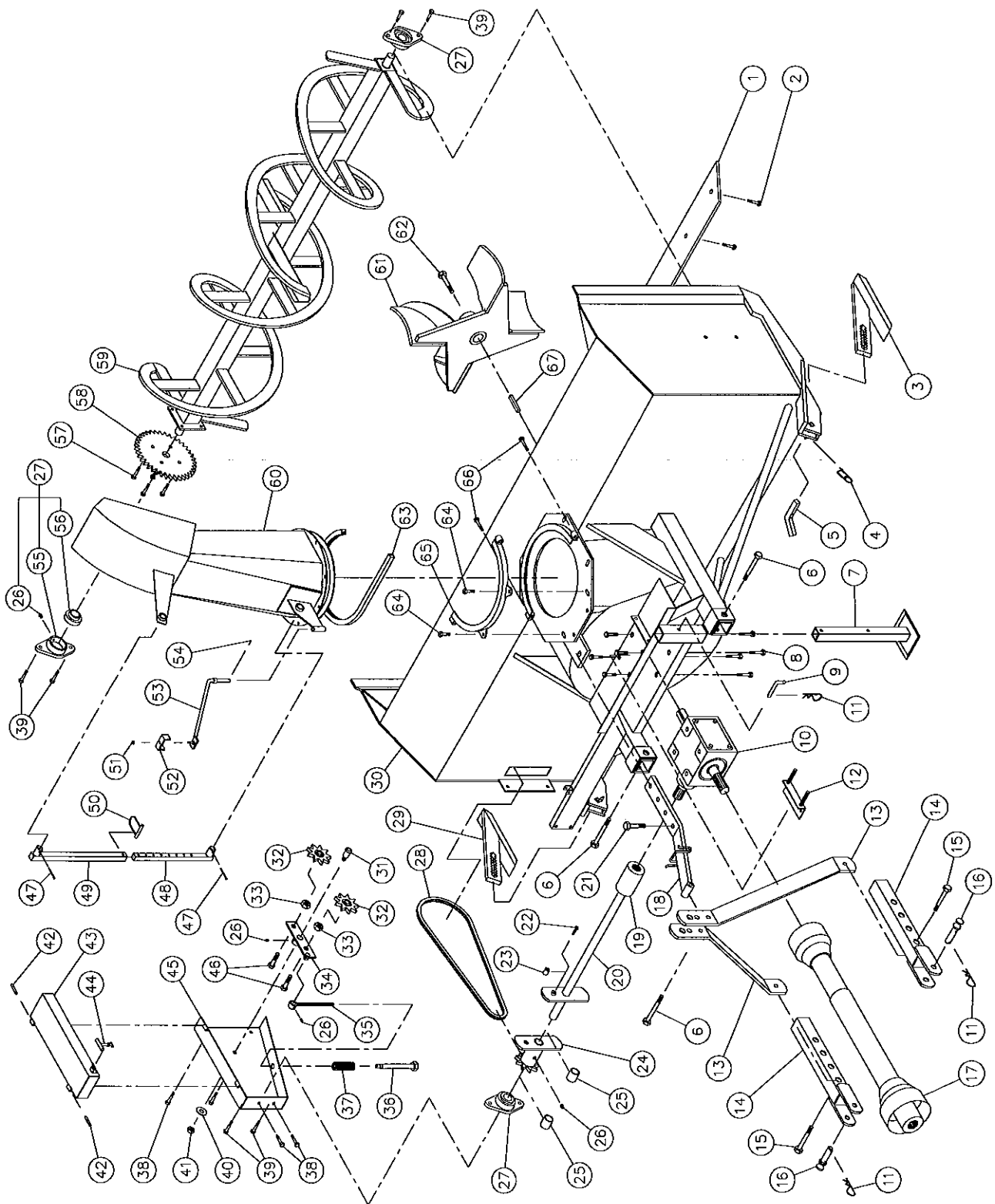
| PROBLEM | POSSIBLE CAUSE | CORRECTION |
|---|--|---|
| - The snow is not being thrown as far as usual. | <ul style="list-style-type: none"> - Tractor RPM too low. - Gap too wide between impeller blade tip and drum outlet wall. - Insufficient tractor HP. | <ul style="list-style-type: none"> - Raise P.T.O. speed to a minimum of 540 RPM. - Adjust impeller blades closer to drum outlet (1/8" to 3/16"). - Reduce travel speed. |
| - Frequent plugging of discharge chute. | <ul style="list-style-type: none"> - Tractor RPM too low. - Tractor RPM reduced too early with snow still in the Snowblower. - Slippage of PTO clutch mechanism. - Wet snow condition. | <ul style="list-style-type: none"> - Raise P.T.O. speed to a minimum of 540 RPM. - Make sure the Snowblower is completely empty before reducing RPM, especially on tractors with foot controlled RPM. - Repair clutch. - Reduce travel speed. |
| - The impeller will not turn. | <ul style="list-style-type: none"> - Shear bolt broken on drive shaft. | <ul style="list-style-type: none"> - Replace shear bolt. |
| - The auger will not turn. | <ul style="list-style-type: none"> - Shear bolt broken on drive shaft. - Shear bolt broken on auger drive shaft. - Broken drive chain. | <ul style="list-style-type: none"> - Replace shear bolt. - Replace shear bolt. - Fix or replace chain. |
| - The rotating drum will not turn. | <ul style="list-style-type: none"> - Rotating drum shear bolt broken. - Ice accumulation. - Wrong hydraulic connections. | <ul style="list-style-type: none"> - Replace shear bolt. - Remove ice. - Check hydraulic connections. |
| - The chute will not turn. | <ul style="list-style-type: none"> - Ice accumulation. - Wrong hydraulic connections. - FOR CHUTE MECHANISM H-4864 - Broken shear bolt. | <ul style="list-style-type: none"> - Remove ice. - Check hydraulic connections. - FOR CHUTE MECHANISM H-4864 - Replace shear bolt. |

SPECIFICATIONS

| Snowblower model | | P-540 | P-540 TRC | P-620 | P-620 TRC | P-680 | P-680 TRC | P-720 | P-720 TRC |
|--|-------------------------------|--------|--------------|--------|--------------|---------|--------------|---------|--------------|
| Horse power recommended (HP) min - max | | 18-25 | 18-25 | 18-25 | 18-25 | 25-35 | 25-35 | 25-35 | 25-35 |
| Working width | (inches) | 54" | 54" | 62" | 62" | 68" | 68" | 72" | 72" |
| | (centimeters) | 137 | 137 | 157 | 157 | 173 | 173 | 183 | 183 |
| Cutting height | (inches) | 28" | 28" | 28" | 28" | 30" | 30" | 30" | 30" |
| | (centimeters) | 71 | 71 | 71 | 71 | 76 | 76 | 76 | 76 |
| Impeller diameter | (inches) | 22" | 22" | 22" | 22" | 24" | 24" | 24" | 24" |
| | (centimeters) | 56 | 56 | 56 | 56 | 61 | 61 | 61 | 61 |
| Depth of drum | (inches) | 9" | 9" | 9" | 9" | 9" | 9" | 9" | 9" |
| | (centimeters) | 22.9 | 22.9 | 22.9 | 22.9 | 22.9 | 22.9 | 22.9 | 22.9 |
| Impeller blades | | 4 | 4 | 4 | 4 | 4 | 4 | 4 | 4 |
| Size of impeller shaft | (inches) | 1 ¼" | 1 ¼" | 1 ¼" | 1 ¼" | 1 9/16" | 1 9/16" | 1 9/16" | 1 9/16" |
| | (centimeters) | 3.18 | 3.18 | 3.18 | 3.18 | 3.97 | 3.97 | 3.97 | 3.97 |
| Impeller RPM | | 540 | 540 | 540 | 540 | 540 | 540 | 540 | 540 |
| Number of augers | | 1 | 1 | 1 | 1 | 1 | 1 | 1 | 1 |
| Main auger diameter | (inches) | 16" | 16" | 16" | 16" | 16" | 16" | 16" | 16" |
| | (centimeters) | 41 | 41 | 41 | 41 | 41 | 41 | 41 | 41 |
| Upper auger 13" (33 cm) diameter | | - | - | - | - | - | - | - | - |
| Drive chain - main auger | | 50 | 50 | 50 | 50 | 60 | 60 | 60 | 60 |
| Oil bath sealed gear box | | Std. | Std. | Std. | Std. | Std. | Std. | Std. | Std. |
| Choice of chute rotation mechanism | Manuel | Avail. | Avail. | Avail. | Avail. | Avail. | Avail. | Avail. | Avail. |
| | Hydraulique C (cylinder) | Avail. | Avail. | Avail. | Avail. | Avail. | Avail. | Avail. | Avail. |
| | Hydraulique M (motor) | Avail. | Avail. | Avail. | Avail. | Avail. | Avail. | Avail. | Avail. |
| Number of shear bolt | | 1 | 1 | 1 | 1 | 1 | 1 | 1 | 1 |
| Heavy duty 3-point | | - | - | - | - | - | - | - | - |
| Hitch category | | 1 | 1 | 1 | 1 | 1 | 1 | 1 | 1 |
| Balanced impeller | | Std. | Std. | Std. | Std. | Std. | Std. | Std. | Std. |
| Balanced auger | | Std. | Std. | Std. | Std. | Std. | Std. | Std. | Std. |
| Drum rotation mechanism | Hydraulic C (cylinder) | - | - | - | - | - | - | - | - |
| | Hydraulic M (motor) | - | Std. | - | Std. | - | Std. | - | Std. |
| 1000 @ 540 RPM reducer | | - | - | - | - | - | - | - | - |
| Scraper blade | Steel - not reversible | Std. | Std. | Std. | Std. | Std. | Std. | Std. | Std. |
| | Carbon steel - not reversible | Opt. | Opt. | Opt. | Opt. | Opt. | Opt. | Opt. | Opt. |
| Adjustable skid shoes | Acier standard | Std. | Std. | Std. | Std. | Std. | Std. | Std. | Std. |
| | Acier au carbone | - | - | - | - | - | - | - | - |
| Full flight upper auger | | - | - | - | - | - | - | - | - |
| Semi-industrial chute | | Opt. | Opt. | Opt. | Opt. | Opt. | Opt. | Opt. | Opt. |
| Industrial chute | | - | - | - | - | - | - | - | - |
| 24" (61 cm) chute extension | | - | - | - | - | - | - | - | - |
| 48" (122 cm) chute extension | | - | - | - | - | - | - | - | - |
| Choice of deflector adjustment | Rod and tube | Avail. | Avail. | Avail. | Avail. | Avail. | Avail. | Avail. | Avail. |
| | Cylinder | Avail. | Avail. | Avail. | Avail. | Avail. | Avail. | Avail. | Avail. |
| Bearing / ductile iron casing | | - | - | - | - | - | - | - | - |
| Height - Impeller center | (inches) | 14" | 14" | 14" | 14" | 15" | 15" | 15" | 15" |
| | (centimeters) | 35.6 | 35.6 | 35.6 | 35.6 | 38.1 | 38.1 | 38.1 | 38.1 |
| Lateral blades | | Opt. | Opt. | Opt. | Opt. | Opt. | Opt. | Opt. | Opt. |
| P.T.O. shaft standard | | No. 2 | No. 2 | No. 2 | No. 2 | No. 4 | No. 4 | No. 5 | No. 5 |
| P.T.O. shaft intensive use | | Opt. | Opt. | Opt. | Opt. | Opt. | Opt. | Opt. | Opt. |
| Weight (approx.) | (lbs) | 550 | 655 | 575 | 680 | 670 | 775 | 695 | 800 |
| | (kg) | 248 | 295 | 259 | 306 | 302 | 349 | 313 | 360 |

Design and specifications subject to change without notice.

SNOWBLOWERS P-540 P-620 P-680 P-720



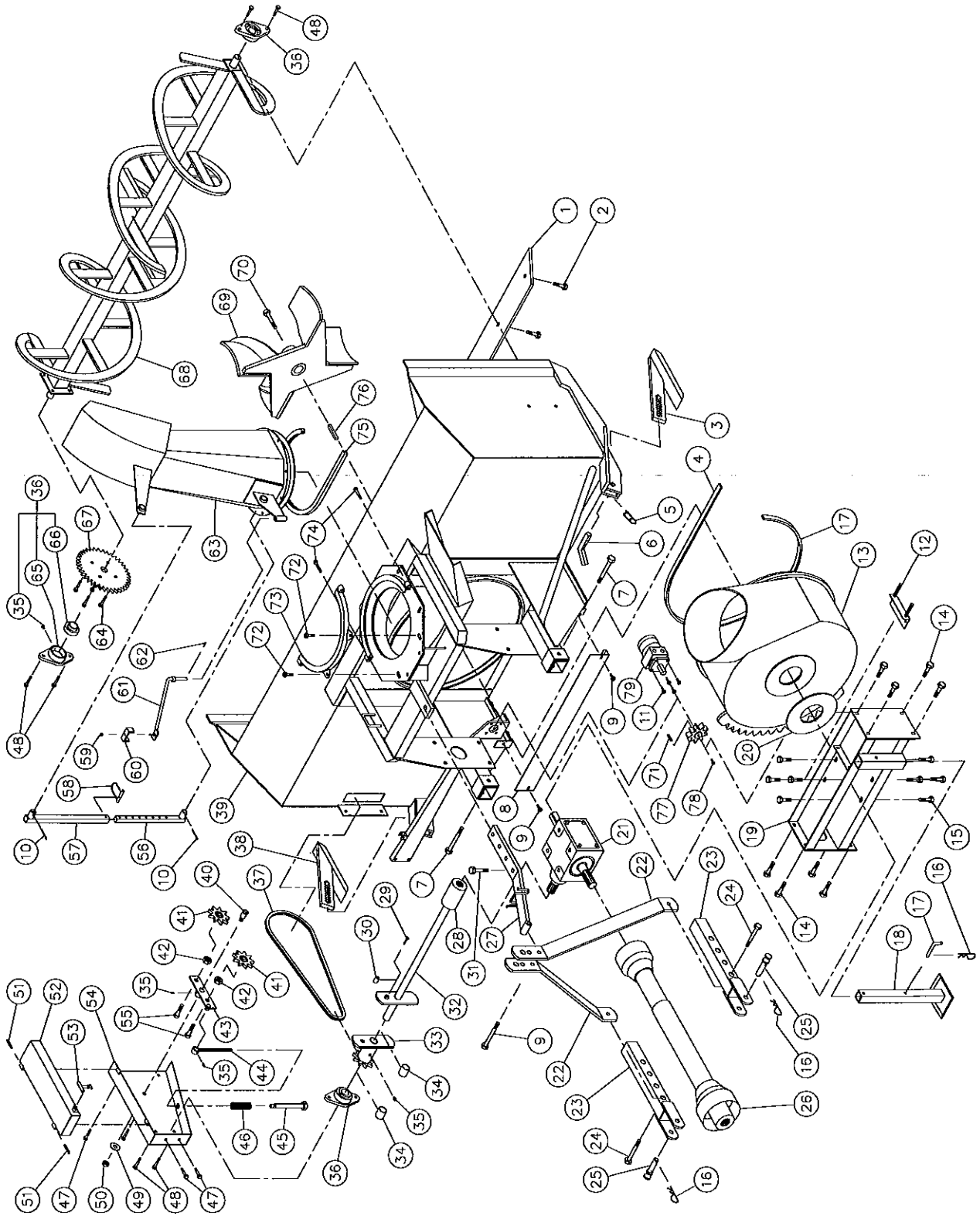
SNOWBLOWERS P-540 P-620 P-680 P-720 (cont'd)

| REF. | PART # | DESCRIPTION | QTY | | | |
|------|-----------|---|-------|-------|-------|-------|
| | | | P-540 | P-620 | P-680 | P-720 |
| 1 | 140-01251 | Scraper blade (not reversible) 3/8" x 2 1/2" x 50 1/4" lg | 1 | - | - | - |
| 1 | 140-01261 | Scraper blade (not reversible) 3/8" x 2 1/2" x 58 1/4" lg | - | 1 | - | - |
| 1 | 140-01271 | Scraper blade (not reversible) 3/8" x 2 1/2" x 64 1/4" lg | - | - | 1 | - |
| 1 | 140-01281 | Scraper blade (not reversible) 3/8" x 2 1/2" x 68 1/4" lg | - | - | - | 1 |
| 2 | 125-0715 | Plow bolt 7/16" NC x 1 1/2" lg + nut & lock washer | 5 | 6 | 7 | 7 |
| 3 | 6479-D | Skid shoe (right side) | 1 | 1 | 1 | 1 |
| 4 | 6561 | Safety square pin 2mm x 58 mm | 2 | 2 | 2 | 2 |
| 5 | 140-03261 | Skid shoes lock | 2 | 2 | 2 | 2 |
| 6 | Std. | Bolt 1/2" NC x 3 1/2" lg + nylon locknut | 3 | 3 | 3 | 3 |
| 7 | 6520 | Storage support | 1 | 1 | 1 | 1 |
| 8 | Std. | Bolt 3/8" NC x 5 1/2" lg + nylon locknut & 6 flat washer | 4 | 4 | - | - |
| 8 | Std. | Bolt 1/2" NC x 1" lg + lock washer & 6 flat washer | - | - | 8 | 8 |
| 9 | 6521 | Storage support pin | 1 | 1 | 1 | 1 |
| 10 | 6451 | Gear box T281 | 1 | 1 | - | - |
| 10 | 8251 | Gear box T27D | - | - | 1 | 1 |
| 11 | Std. | Hitch pin clip 5/32" | 3 | 3 | 3 | 3 |
| 12 | 6522 | Adjustment plate for gear box + 4 nuts 3/8" NC | 1 | 1 | - | - |
| 12 | 8199 | Adjustment plate for gear box + 4 nuts 1/2" NC | - | - | 1 | 1 |
| 13 | 6517 | 3-point side bar | 2 | 2 | - | - |
| 13 | 6519 | 3-point side bar | - | - | 2 | 2 |
| 14 | 6252 | Lower hitch (right & left) | 2 | 2 | 2 | 2 |
| 15 | Std. | Bolt 1/2" NC x 3" lg + nylon locknut | 2 | 2 | 2 | 2 |
| 16 | 6253 | Pin category 1 | 2 | 2 | 2 | 2 |
| 17 | 6408 | P.T.O. shaft | 1 | 1 | - | - |
| 17 | 6248 | P.T.O. shaft | - | - | 1 | - |
| 17 | 8114 | P.T.O. shaft | - | - | - | 1 |
| 18 | 6504 | Upper hitch | 1 | 1 | - | - |
| 18 | 6505 | Upper hitch | - | - | 1 | 1 |
| 19 | 6466 | Splined adaptor 1 1/4"-19 | 1 | 1 | 1 | 1 |
| 20 | 6441 | Auger drive shaft 20 7/8" lg overall (including no. 19 & 23) | 1 | - | - | - |
| 20 | 6442 | Auger drive shaft 24 7/8" lg overall (including no. 19 & 23) | - | 1 | - | - |
| 20 | 6443 | Auger drive shaft 24 7/16" lg overall (including no. 19 & 23) | - | - | 1 | - |
| 20 | 6456 | Auger drive shaft 26 7/16" lg overall (including no. 19 & 23) | - | - | - | 1 |
| 21 | Std. | Bolt 1/2" NC x 1 1/2" lg + nylon locknut | 1 | 1 | 1 | 1 |
| 22 | Std. | Bolt 1/4" NC x 2" lg grade 5 + nylon locknut | 1 | 1 | 1 | 1 |
| 23 | 8164 | Welded bushing 1/4" i.d. x 3/4" o.d. x 3/4" lg | 2 | 2 | 2 | 2 |
| 24 | 6287 | Sprocket #50 + shearplate | 1 | 1 | - | - |
| 24 | 6260 | Sprocket #60 + shearplate | - | - | 1 | 1 |
| 25 | 8009 | Brass bushing 1 1/4" i.d. x 1 1/2" o.d. x 1 3/16" lg | 2 | 2 | 2 | 2 |
| 26 | Std. | Grease fitting 1/4"-28 straight | 6 | 6 | 6 | 6 |
| 27 | 6261 | Bearing 1" + flange | 3 | 3 | 3 | 3 |
| 28 | ASA50-5 | Chain #50 x 59 7/8" lg | 1 | 1 | - | - |
| 28 | 26A50 | Connecting link no. 50 | 1 | 1 | - | - |
| 28 | 59-50 | Offset link no. 50 | 1 | 1 | - | - |
| 28 | ASA60-5.4 | Chain #60 x 64 3/4" lg | - | - | 1 | 1 |
| 28 | 26A60 | Connecting link no. 60 | - | - | 1 | 1 |
| 28 | 59-60 | Offset link no. 60 | - | - | 1 | 1 |
| 29 | 110-04361 | Skid shoe (left side) | 1 | 1 | 1 | 1 |
| 30 | --- | Frame P-540 | 1 | - | - | - |
| 30 | --- | Frame P-620 | - | 1 | - | - |
| 30 | --- | Frame P-680 | - | - | 1 | - |
| 30 | --- | Frame P-720 | - | - | - | 1 |
| 31 | 150-00461 | Idler clevis pin | 1 | 1 | - | - |

SNOWBLOWERS P-540 P-620 P-680 P-720 (cont'd)

| REF. | PART # | DESCRIPTION | QTY | | | |
|------|-----------|--|-------|-------|-------|-------|
| | | | P-540 | P-620 | P-680 | P-720 |
| 31 | 150-00501 | Idler clevis pin | - | - | 1 | 1 |
| 32 | 8122 | Idler pulley | 2 | 2 | - | - |
| 32 | 8186 | Idler sprocket #60 | - | - | 2 | 2 |
| 33 | 160-01611 | Spacer | 2 | 2 | - | - |
| 33 | Std. | Nut 5/8" NC | - | - | 2 | 2 |
| 34 | 110-01971 | Idler | 1 | 1 | - | - |
| 34 | 110-02151 | Idler | - | - | 1 | 1 |
| 35 | 110-01991 | Threaded rod for idler adjustment + nut 7/16" NC | 1 | 1 | - | - |
| 35 | 110-02141 | Threaded rod for idler adjustment + nut 7/16" NC | - | - | 1 | 1 |
| 36 | 110-01981 | Threaded tube for idler adjustment | 1 | 1 | 1 | 1 |
| 37 | 6538 | Compression spring | 1 | 1 | 1 | 1 |
| 38 | Std. | Bolt 3/8" NC x 1" lg + nylon locknut | 4 | 4 | 4 | 4 |
| 39 | Std. | Bolt 1/2" NC x 1 1/4" lg + nylon locknut thin | 6 | 6 | 6 | 6 |
| 40 | Std. | Flat washer 1/2" | 1 | 1 | 1 | 1 |
| 41 | 346-40500 | Nylon locknut 1/2" NC mince | 1 | 1 | 1 | 1 |
| 42 | Std. | Roll pin 5/16" x 2" lg | 2 | 2 | 2 | 2 |
| 43 | 110-02021 | Chain guard cover | 1 | 1 | - | - |
| 43 | 110-02161 | Chain guard cover | - | - | 1 | 1 |
| 44 | 8125 | Rubber fastener | 1 | 1 | 1 | 1 |
| 45 | 110-02231 | Chain guard | 1 | 1 | - | - |
| 45 | 110-02251 | Chain guard | - | - | 1 | 1 |
| 46 | Std. | Bolt 1/2" NC x 2 1/2" lg + nylon locknut | 2 | 2 | - | - |
| 46 | Std. | Bolt 1/2" NC x 2" lg + nylon locknut | - | - | 2 | 2 |
| 47 | Std. | 2 cotter pin 5/32" x 2" lg | opt. | opt. | opt. | opt. |
| 48 | 6438 | Chute adjusting rod | opt. | opt. | opt. | opt. |
| 49 | 6439 | Chute adjusting tube | opt. | opt. | opt. | opt. |
| 50 | 8112 | Lock pin 1/4" | opt. | opt. | opt. | opt. |
| 51 | Std. | Nylon locknut 5/16" NC | opt. | opt. | opt. | opt. |
| 52 | 140-00881 | Hoses mounting plate | opt. | opt. | opt. | opt. |
| 53 | 110-01121 | Mounting support plate | opt. | opt. | opt. | opt. |
| 54 | Std. | Cotter pin 1/8" x 1" lg | opt. | opt. | opt. | opt. |
| 55 | 6454 | Flange FL205 | 3 | 3 | 3 | 3 |
| 56 | 6455 | Bearing 1" UC205-16 | 3 | 3 | 3 | 3 |
| 57 | Std. | Bolt 3/8" NC x 1 1/4" lg + nylon locknut | 4 | 4 | 4 | 4 |
| 58 | 6288 | Sprocket 50 A36 T 1" ø | 1 | 1 | - | - |
| 58 | 6272 | Sprocket 60 A38 T 1 1/4" ø | - | - | 1 | 1 |
| 59 | 6281 | Auger P-540 | 1 | - | - | - |
| 59 | 6282 | Auger P-620 | - | 1 | - | - |
| 59 | 6453 | Auger P-680 | - | - | 1 | - |
| 59 | 6457 | Auger P-720 | - | - | - | 1 |
| 60 | 110-02271 | Chute | 1 | 1 | 1 | 1 |
| 61 | 110-02241 | Impeller 22" ø 4 blades | 1 | 1 | - | - |
| 61 | 110-02261 | Impeller 24" ø 4 blades | - | - | 1 | 1 |
| 62 | 6525 | Impeller cap screw 3/8" NC x 1" lg + lock washer | 1 | 1 | - | - |
| 62 | 8228 | Impeller cap screw 5/8" NC x 1 1/2" lg + lock washer | - | - | 1 | 1 |
| 63 | 6471 | U-shaped UHMW ± 12" ø i.d. | 1 | 1 | 1 | 1 |
| 64 | Std. | Bolt 7/16" NC x 1 1/4" lg + nylon lock nut & flat washer | 2 | 2 | 2 | 2 |
| 65 | 110-02001 | Retaining bracket | 1 | 1 | 1 | 1 |
| 66 | Std. | Bolt 5/16" NC x 2 1/2" lg + nylon locknut | 2 | 2 | 2 | 2 |
| 67 | 6276 | Square key 1/4" x 1/4" x 1 3/4" lg | 1 | 1 | - | - |
| 67 | 8030 | Square key 3/8" x 3/8" x 3 1/2" lg | - | - | 1 | 1 |

SNOWBLOWERS P-540TRC P-620TRC P-680TRC P-720TRC



10

SNOWBLOWERS P-540TRCP-620TRCP-680TRCP-720TRC (cont'd)

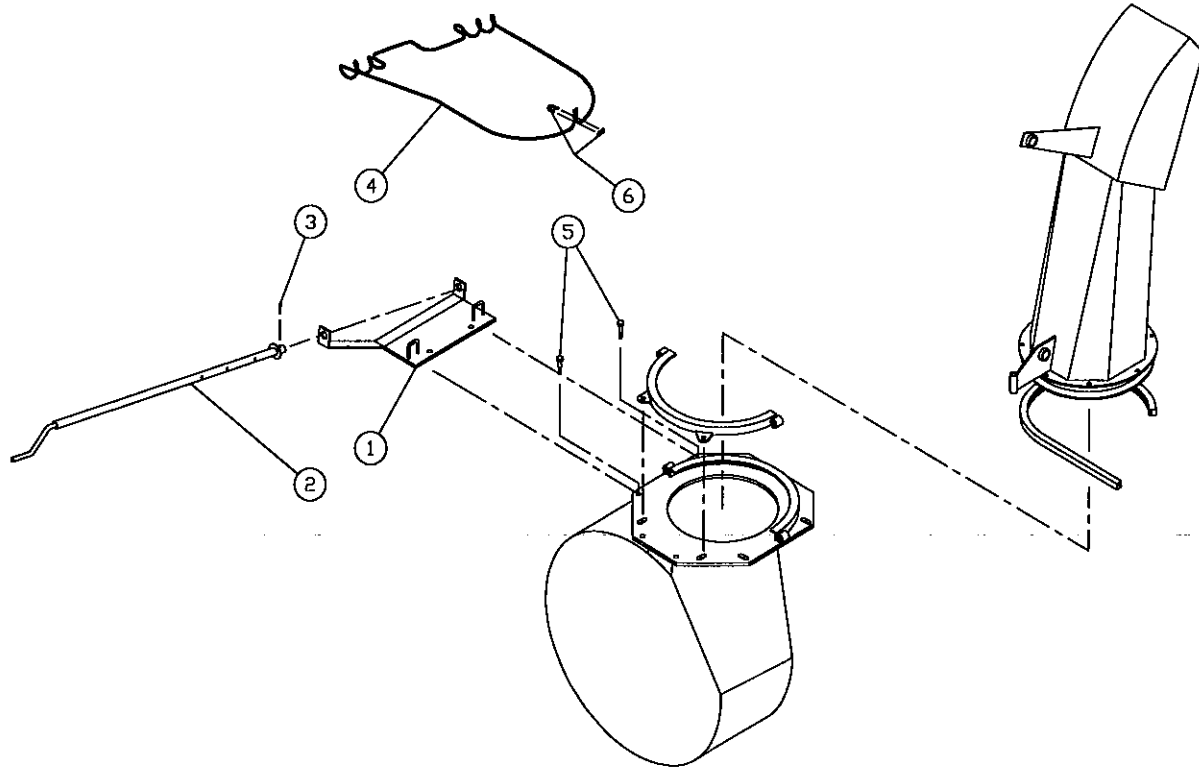
| REF. | PART # | DESCRIPTION | P-540TRC | P-620TRC | P-680TRC | P-720TRC | QTY |
|------|-----------|---|----------|----------|----------|----------|-----|
| 1 | 140-01251 | Scaper blade (not reversible) 3/8" x 2 1/2" x 50 1/4" lg | 1 | - | - | - | - |
| 1 | 140-01261 | Scaper blade (not reversible) 3/8" x 2 1/2" x 58 1/4" lg | - | 1 | - | - | - |
| 1 | 140-01271 | Scaper blade (not reversible) 3/8" x 2 1/2" x 64 1/4" lg | - | - | 1 | - | - |
| 1 | 140-01281 | Scaper blade (not reversible) 3/8" x 2 1/2" x 68 1/4" lg | - | - | - | 1 | - |
| 2 | 125-0715 | Plow bolt 7/16" NC x 1 1/2" lg + nut & lock washer | 5 | 6 | 7 | 7 | - |
| 3 | 110-05541 | Skid shoe (right side) | 1 | 1 | 1 | 1 | - |
| 4 | 6514 | U-shaped UHMW 3/8" x 9/16" x 70 5/8" lg | 1 | 1 | - | - | - |
| 4 | 6515 | U-shaped UHMW 3/8" x 9/16" x 77" lg | - | - | 1 | 1 | - |
| 5 | 6561 | Safety lock 2 mm x 58 mm | 2 | 2 | 2 | 2 | - |
| 6 | 140-03261 | Skid shoes lock | 2 | 2 | 2 | 2 | - |
| 7 | Std. | Bolt 1/2" NC x 3 1/2" lg + nylon locknut | 3 | 3 | 3 | 3 | - |
| 8 | 130-03221 | Guard for ring gear segment | 1 | 1 | - | - | - |
| 8 | 130-03231 | Guard for ring gear segment | - | - | 1 | 1 | - |
| 9 | Std. | Bolt 7/16" NC x 1" lg + nylon locknut & flat washer | 2 | 2 | 2 | 2 | - |
| 10 | Std. | Cotter pin 5/32" x 2" lg (2) | opt. | opt. | opt. | opt. | - |
| 11 | Std. | Bolt 3/8" NC x 1" lg + lockwasher | 4 | 4 | 4 | 4 | - |
| 12 | 6522 | Adjustment plate for gear box + 4 nuts 3/8" NC | 1 | 1 | - | - | - |
| 12 | 8199 | Adjustment plate for gear box + 4 nuts 1/2" NC | - | - | 1 | 1 | - |
| 13 | 110-02551 | Rotary drum 22" ø | 1 | 1 | - | - | - |
| 13 | 110-02571 | Rotary drum 24" ø | - | - | 1 | 1 | - |
| 14 | Std. | Bolt 1/2" NC x 1 1/4" lg + nylon locknut | 8 | 8 | - | - | - |
| 14 | Std. | Bolt 5/8" NC x 1 1/2" lg + nylon locknut | - | - | 8 | 8 | - |
| 15 | Std. | Bolt 3/8" NC x 5 1/2" lg + nylon locknut & 2 flat washers | 4 | 4 | - | - | - |
| 15 | Std. | Bolt 1/2" NC x 1" lg + lock washer & flat washer | - | - | 8 | 8 | - |
| 16 | Std. | Hitch pin clip 5/32" | 3 | 3 | 3 | 3 | - |
| 17 | 6521 | Storage support pin | 1 | 1 | 1 | 1 | - |
| 18 | 6520 | Storage support | 1 | 1 | 1 | 1 | - |
| 19 | 110-05611 | Gear box support | 1 | 1 | - | - | - |
| 19 | 110-05601 | Gear box support | - | - | 1 | 1 | - |
| 20 | 6530 | UHMW flat washer 3/16" x 5" i.d. x 6 1/2" o.d. | 1 | 1 | - | - | - |
| 20 | 8232 | UHMW flat washer 3/16" x 4 5/8" i.d. x 8 1/8" o.d. | - | - | 1 | 1 | - |
| 21 | 6451 | Gear box T281 | 1 | 1 | - | - | - |
| 21 | 8251 | Gear box T-27D | - | - | 1 | 1 | - |
| 22 | 6516 | 3-point side bar | 2 | 2 | - | - | - |
| 22 | 6518 | 3-point side bar | - | - | 2 | 2 | - |
| 23 | 6252 | Lower hitch (right and left) | 2 | 2 | 2 | 2 | - |
| 24 | Std. | Bolt 1/2" NC x 3" lg + nylon locknut | 2 | 2 | 2 | 2 | - |
| 25 | 6253 | Pin category 1 | 2 | 2 | 2 | 2 | - |
| 26 | 6408 | P.T.O. shaft | 1 | 1 | - | - | - |
| 26 | 6248 | P.T.O. shaft | - | - | 1 | - | - |
| 26 | 8114 | P.T.O. shaft | - | - | - | 1 | - |
| 27 | 6502 | Upper hitch | 1 | 1 | - | - | - |
| 27 | 6503 | Upper hitch | - | - | 1 | 1 | - |
| 28 | 6466 | Splines adaptor 1 1/4" - 19 | 1 | 1 | 1 | 1 | - |
| 29 | Std. | Safety shear bolt 1/4" NC x 2" lg grade 5 + nylon locknut | 1 | 1 | 1 | 1 | - |
| 30 | 8164 | Welded bushing 1/4" i.d. x 3/4" o.d. x 3/4" lg | 4 | 4 | 4 | 4 | - |
| 31 | Std. | Bolt 1/2" NC x 1 1/2" lg + nylon locknut | 1 | 1 | 1 | 1 | - |
| 32 | 6441 | Auger drive shaft 20 7/8" lg overall (including no. 28 & 30) | 1 | - | - | - | - |
| 32 | 6442 | Auger drive shaft 24 7/8" lg overall (including no. 28 & 30) | - | 1 | - | - | - |
| 32 | 6443 | Auger drive shaft 24 7/16" lg overall (including no. 28 & 30) | - | - | 1 | - | - |
| 32 | 6456 | Auger drive shaft 26 7/16" lg overall (including no. 28 & 30) | - | - | - | 1 | - |
| 33 | 6287 | Sprocket #50 + shearplate | 1 | 1 | - | - | - |
| 33 | 6260 | Sprocket #60 + shearplate | - | - | 1 | 1 | - |
| 34 | 8009 | Brass bushing 1 1/4" i.d. x 1 1/2" o.d. x 1 3/16" lg | 2 | 2 | 2 | 2 | - |
| 35 | Std. | Grease fitting 1/4"-28 straight | 6 | 6 | 6 | 6 | - |
| 36 | 6261 | Bearing 1" + flange | 3 | 3 | 3 | 3 | - |
| 37 | ASA50-5 | Chain #50 | 1 | 1 | - | - | - |
| 37 | 26A50 | Connecting link no. 50 | 1 | 1 | - | - | - |
| 37 | 59-50 | Offset link no. 50 | 1 | 1 | - | - | - |
| 37 | ASA60-5.4 | Chain #60 | - | - | 1 | 1 | - |
| 37 | 26A60 | Connecting link no. 60 | - | - | 1 | 1 | - |
| 37 | 59-60 | Offset link no. 60 | - | - | 1 | 1 | - |
| 38 | 110-04361 | Skid shoe (left side) | 1 | 1 | 1 | 1 | - |

SNOWBLOWERS P-540TRCP-620TRCP-680TRCP-720TRC (cont'd)

| REF. | PART # | DESCRIPTION | QTY | | | |
|------|-----------|---|----------|----------|----------|----------|
| | | | P-540TRC | P-620TRC | P-680TRC | P-720TRC |
| 39 | --- | Frame P-540TRC | 1 | - | - | - |
| 39 | --- | Frame P-620TRC | - | 1 | - | - |
| 39 | --- | Frame P-680TRC | - | - | 1 | - |
| 39 | --- | Frame P-720TRC | - | - | - | 1 |
| 40 | 150-00461 | Idler clevis pin | 1 | 1 | - | - |
| 40 | 150-00501 | Idler clevis pin | - | - | 1 | 1 |
| 41 | 8122 | Idler pulley #50 | 2 | 2 | - | - |
| 41 | 8186 | Idler sprocket #60 | - | - | 2 | 2 |
| 42 | 160-01611 | Spacer | 2 | 2 | - | - |
| 42 | Std. | Nut 5/8" NC | - | - | 2 | 2 |
| 43 | 110-01971 | Idler | 1 | 1 | - | - |
| 43 | 110-02151 | Idler | - | - | 1 | 1 |
| 44 | 110-01991 | Threaded rod for idler adjustment + nut 7/16" NC | 1 | 1 | - | - |
| 44 | 110-02141 | Threaded rod for idler adjustment + nut 7/16" NC | - | - | 1 | 1 |
| 45 | 110-01981 | Threaded tube for idler adjustment | 1 | 1 | 1 | 1 |
| 46 | 6538 | Compression spring | 1 | 1 | 1 | 1 |
| 47 | Std. | Bolt 3/8" NC x 1" lg + nylon locknut | 4 | 4 | 4 | 4 |
| 48 | Std. | Bolt 1/2" NC x 1 1/4" lg + nylon locknut thin | 6 | 6 | 6 | 6 |
| 49 | Std. | Flat washer 1/2" | 1 | 1 | 1 | 1 |
| 50 | 346-40500 | Nylon locknut 1/2" NC thin | 1 | 1 | 1 | 1 |
| 51 | Std. | Roll pin 5/16" x 2" lg | 2 | 2 | 2 | 2 |
| 52 | 110-02021 | Chain guard cover | 1 | 1 | - | - |
| 52 | 110-02161 | Chain guard cover | - | - | 1 | 1 |
| 53 | 8125 | Rubber fastener | 1 | 1 | 1 | 1 |
| 54 | 110-02231 | Chain guard | 1 | 1 | - | - |
| 54 | 110-02251 | Chain guard | - | - | 1 | 1 |
| 55 | Std. | Bolt 1/2" NC x 2 1/2" lg + nylon locknut | 2 | 2 | - | - |
| 55 | Std. | Bolt 1/2" NC x 2" lg + nylon locknut | - | - | 2 | 2 |
| 56 | 6438 | Chute adjusting rod | opt. | opt. | opt. | opt. |
| 57 | 6439 | Chute adjusting tube | opt. | opt. | opt. | opt. |
| 58 | 8112 | Lock pin | opt. | opt. | opt. | opt. |
| 59 | Std. | Nylon locknut 5/16" NC | opt. | opt. | opt. | opt. |
| 60 | 140-00881 | Hoses mounting plate | opt. | opt. | opt. | opt. |
| 61 | 110-01121 | Mounting support plate | opt. | opt. | opt. | opt. |
| 62 | Std. | Cotter pin 1/8" x 1" lg | opt. | opt. | opt. | opt. |
| 63 | 110-02271 | Chute | 1 | 1 | 1 | 1 |
| 64 | Std. | Bolt 3/8" NC x 1 1/4" lg + nylon locknut | 4 | 4 | 4 | 4 |
| 65 | 6454 | Flange | 3 | 3 | 3 | 3 |
| 66 | 6455 | Bearing 1" UC205-16 | 3 | 3 | 3 | 3 |
| 67 | 6288 | Sprocket #50A36 T 1" | 1 | 1 | - | - |
| 67 | 6272 | Sprocket #60A38 T 1 1/4" | - | - | 1 | 1 |
| 68 | 6281 | Auger P-540TRC | 1 | - | - | - |
| 68 | 6282 | Auger P-620TRC | - | 1 | - | - |
| 68 | 6453 | Auger P-680TRC | - | - | 1 | - |
| 68 | 6457 | Auger P-720TRC | - | - | - | 1 |
| 69 | 110-02241 | Impeller 22" ø 4 blades | 1 | 1 | - | - |
| 69 | 110-02261 | Impeller 24" ø 4 blades | - | - | 1 | 1 |
| 70 | 6525 | Impeller cap screw 3/8" NC x 1" lg + lock washer | 1 | 1 | - | - |
| 70 | 8228 | Impeller cap screw 5/8" NC x 2" lg + lock washer | - | - | 1 | 1 |
| 71 | Std. | Bolt 1/2" NC x 1 1/4" lg + nylon locknut | 2 | 2 | 2 | 2 |
| 72 | Std. | Bolt 7/16" NC x 1 1/4" lg + nylon locknut & flat washer | 2 | 2 | 2 | 2 |
| 73 | 110-02001 | Retaining bracket | 1 | 1 | 1 | 1 |
| 74 | Std. | Bolt 5/16" NC x 2 1/2" lg + nylon locknut | 2 | 2 | 2 | 2 |
| 75 | 6471 | U-shaped UHMW ± 12" i.d. | 1 | 1 | 1 | 1 |
| 76 | 6276 | Square key 1/4" x 1/4" x 1 3/4" lg | 1 | 1 | - | - |
| 76 | 8030 | Square key 3/8" x 3/8" x 3 1/2" lg | - | - | 1 | 1 |
| 77 | --- | Key (as motor requirement) | 1 | 1 | 1 | 1 |
| 78 | Std. | Bolt 1/4" NC x 3/4" lg + lock washer | 1 | 1 | 1 | 1 |
| 79 | DH100 | Hydraulic motor for rotary drum | 1 | 1 | 1 | 1 |

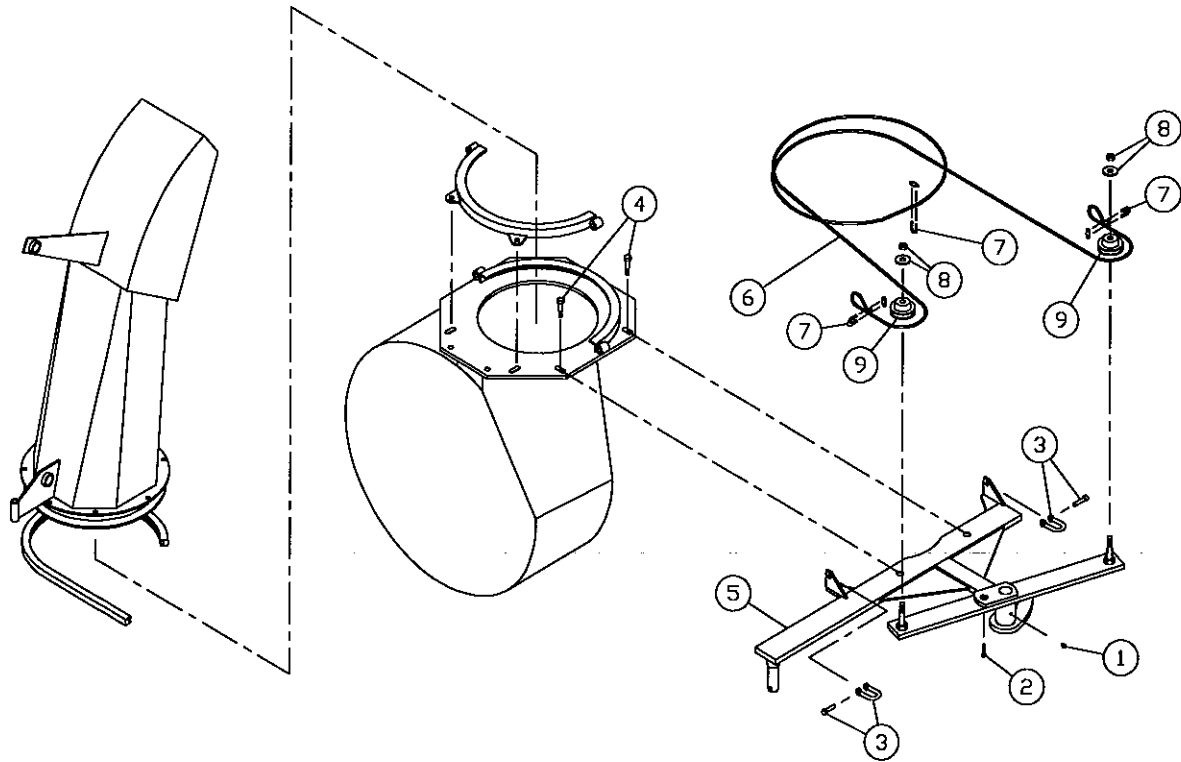
10

MANUAL CHUTE KIT M-4864



| REF. | PART # | DESCRIPTION | QTY |
|------|--------|--|-----|
| 1 | 6493 | Rotation system support | 1 |
| 2 | 6300 | Crank | 1 |
| 3 | Std. | Cotter pin 3/16" x 1 1/2" lg | 1 |
| 4 | 6302 | Cable 1/8" x 84" lg | 1 |
| 5 | Std. | Bolt 7/16" x 1 1/4" lg + nylon locknut | 2 |
| 6 | 6303 | Cable clamp 1/8" | 1 |

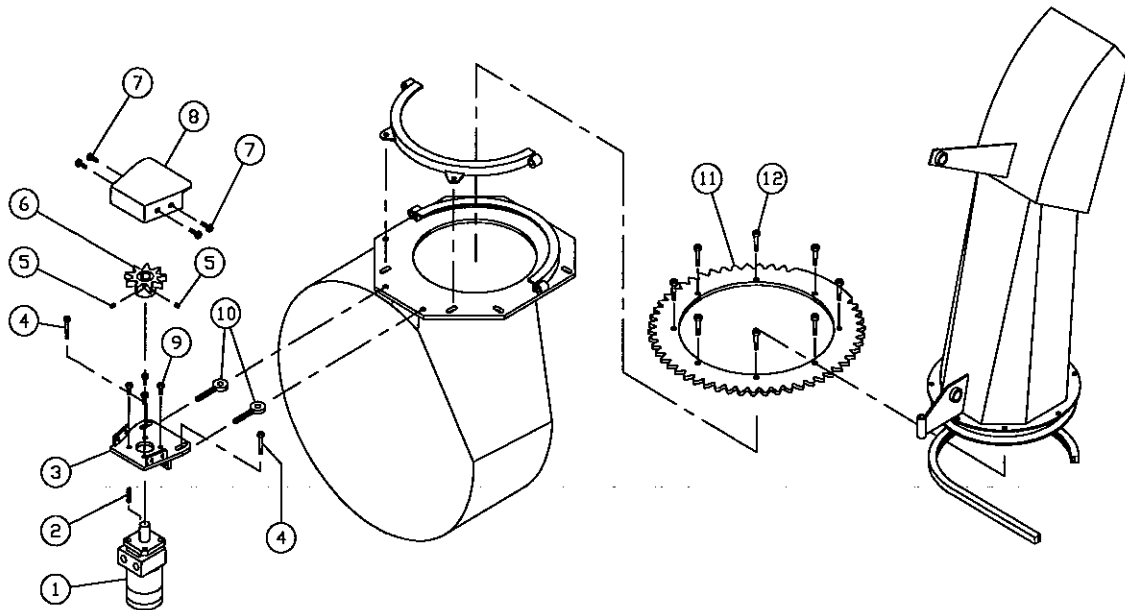
HYDRAULIC CHUTE KIT *Cylinder H-4864*



| REF. | PART # | DESCRIPTION | QTY |
|------|--------|--|-----|
| 1 | Std. | Grease fitting 1/4"-28 straight | 1 |
| 2 | Std. | Bolt 1/4" x 2" + nylon locknut | 1 |
| 3 | 6305 | Clevis 1/4" | 2 |
| 4 | Std. | Bolt 7/16" x 2" lg + nylon locknut | 2 |
| 5 | 6494 | Frame | 1 |
| 6 | 6495 | Cable 3/16" x 116" lg | 1 |
| 7 | 6496 | Cable clamp 3/16" | 3 |
| 8 | Std. | Nylon locknut 5/8" & flat washer | 2 |
| 9 | 8098 | Pulley | 2 |
| NI* | 25TR04 | Cylinder | 1 |

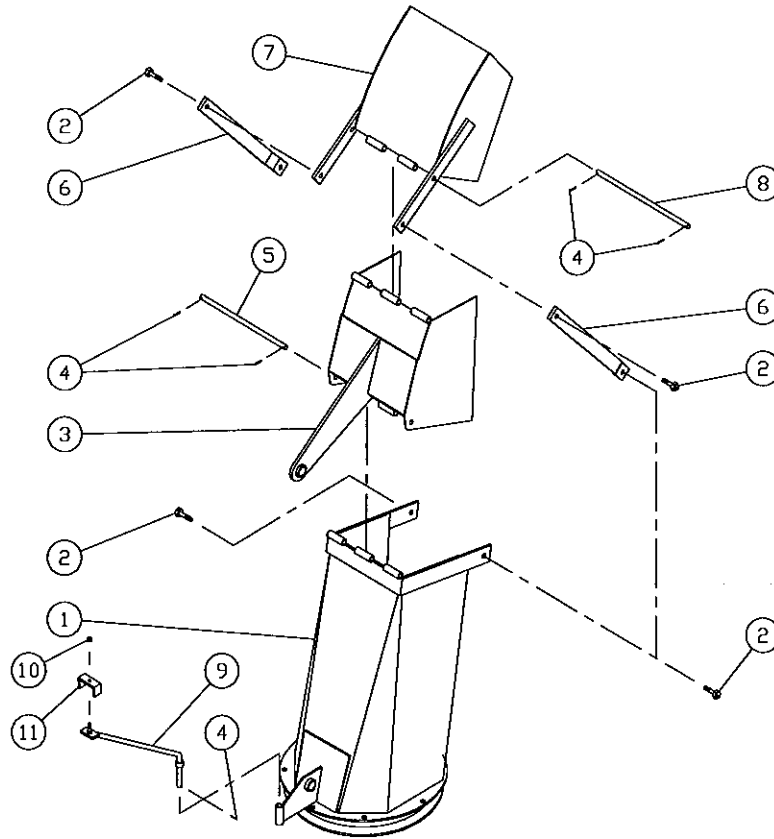
*NI = NOT ILLUSTRATED

HYDRAULIC CHUTE KIT Motor SP-4864



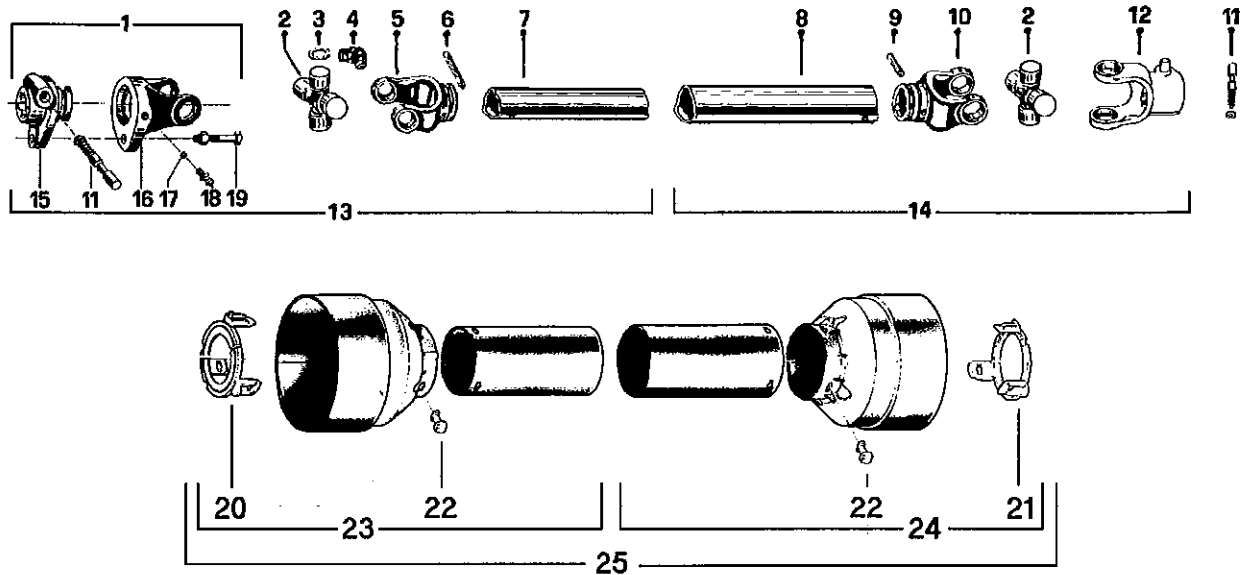
| REF. | PART # | DESCRIPTION | QTY |
|------|--------|---|-----|
| 1 | --- | Hydraulic motor (DH125 or DH250) | 1 |
| 2 | --- | Key (as motor requirement) | 1 |
| 3 | 6539 | Motor mounting plate | 1 |
| 4 | Std. | Bolt 7/16" NC x 2" lg + nylon locknut & flat washer | 2 |
| 5 | Std. | Allen set screw 3/8" NC x 3/8" lg | 2 |
| 6 | 8159 | Sprocket (9 teeth) | 1 |
| 7 | Std. | Bolt 3/8" NC x 3/4" lg + lock washer & flat washer | 4 |
| 8 | 8158 | Guard | 1 |
| 9 | Std. | Bolt 3/8" NC x 1" lg + lock washer | 4 |
| 10 | 8161 | Take-up screws + 2 nuts 3/8" NC | 2 |
| 11 | 6469 | Ring gear (37 teeth) | 1 |
| 12 | Std. | Bolt 7/16" NC x 1 1/4" lg + nylon locknut | 8 |

SEMI-INDUSTRIAL CHUTE PSI-4864



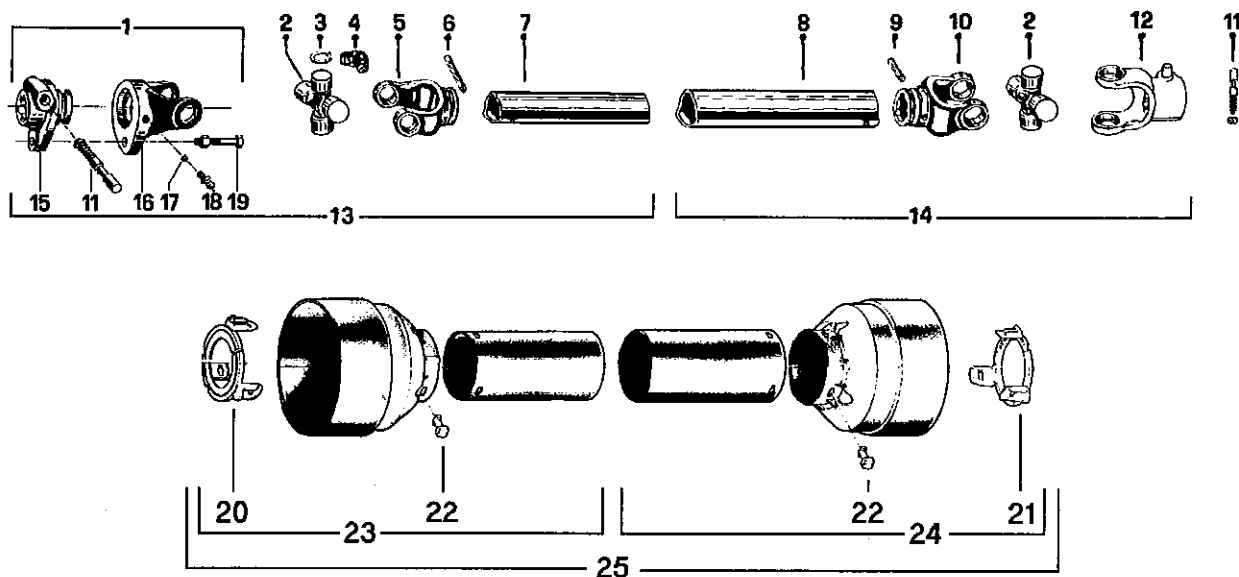
| REF. | PART # | DESCRIPTION | QTY |
|------|-----------|--|-----|
| 1 | 110-02281 | Chute base | 1 |
| 2 | Std. | Bolt 7/16" x 1 1/4" lg + nylon locknut | 4 |
| 3 | 6532 | Lower chute deflector | 1 |
| 4 | Std. | Cotter pin 1/8" x 1" lg | 4 |
| 5 | 6533 | Lower chute deflector pin | 1 |
| 6 | 6534 | Connecting rod | 2 |
| 7 | 6535 | Upper chute deflector | 1 |
| 8 | 6536 | Upper chute deflector pin | 1 |
| 9 | 110-01121 | Mounting support plate | 1 |
| 10 | Std. | Nylon locknut 5/16" NC | 1 |
| 11 | 140-00881 | Hoses mounting plate | 1 |

P.T.O. SHAFT # 6408 (T20)



| REF. | PART # | DESCRIPTION | QTY |
|------|--------|---|-----|
| 1 | 6201 | Quick disconnect yoke assembly | 1 |
| 2 | 6208 | U-joint + 4 retaining rings + 1 grease fitting | 2 |
| 3 | 6203 | Retaining ring | 8 |
| 4 | 8110 | Grease fitting | 2 |
| 5 | 6434 | Yoke for inner tube | 1 |
| 6 | 6433 | Stopper for inner tube | 1 |
| 7 | 6432 | Inner tube | 1 |
| 8 | 6431 | Outer tube | 1 |
| 9 | 6344 | Stopper for outer tube | 1 |
| 10 | 6430 | Yoke for outer tube | 1 |
| 11 | 8068-E | Yoke stopper 1 11/16" | 2 |
| 12 | 6409 | Yoke with hole 1 3/8"-6 splines + yoke stopper | 1 |
| 13 | 6224 | P.T.O. section, side with safety shear bolt, inner part, without protector | 1 |
| 14 | 6225 | P.T.O. section, side without safety shear bolt, outer part, without protector | 1 |
| 15 | 6202 | Adaptor | 1 |
| 16 | 6204 | Yoke and shearplate | 1 |
| 17 | 6205 | Ball | 17 |
| 18 | 6206 | Grease fitting | 1 |
| 19 | 6207 | Safety shear bolt M6 x 40mm | 1 |
| 20 | 6219-E | Bearing ring for inner guard tube | 1 |
| 21 | 6218-E | Bearing ring for outer guard tube | 1 |
| 22 | 8109 | Stopper | 6 |
| 23 | 6221 | Inner shield | 1 |
| 24 | 6220 | Outer shield | 1 |
| 25 | 6222 | Complete shield | 1 |

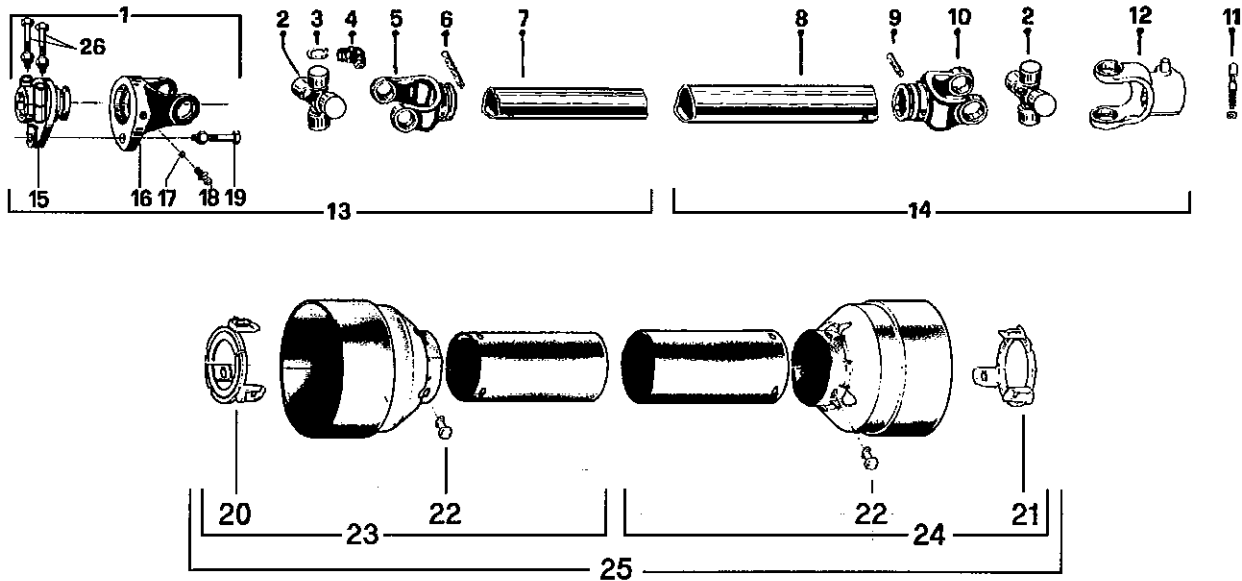
P.T.O. SHAFT # 6248 (T40)



| REF. | PART # | DESCRIPTION | QTY |
|------|--------|---|-----|
| 1 | 6232 | Quick disconnect yoke assembly | 1 |
| 2 | 6239 | U-joint + 4 retaining rings + 1 grease fitting | 2 |
| 3 | 6234 | Retaining ring | 8 |
| 4 | 8110 | Grease fitting | 2 |
| 5 | 6353 | Yoke for inner tube | 1 |
| 6 | 6344 | Stopper for inner tube | 1 |
| 7 | 6343 | Inner tube | 1 |
| 8 | 6342 | Outer tube | 1 |
| 9 | 6341 | Stopper for outer tube | 1 |
| 10 | 6340 | Yoke for outer tube | 1 |
| 11 | 8068-E | Yoke stopper 1 11/16" | 2 |
| 12 | 6354 | Yoke with hole 1 3/8"-6 splines + yoke stopper | 1 |
| 13 | 6236 | P.T.O. section, side with safety shear bolt, inner part, without protector | 1 |
| 14 | 6237 | P.T.O. section, side without safety shear bolt, outer part, without protector | 1 |
| 15 | 6233 | Adaptor | 1 |
| 16 | 6235 | Yoke and shearplate | 1 |
| 17 | 8070 | Ball | 17 |
| 18 | 8071 | Grease fitting | 1 |
| 19 | 6238 | Safety shear bolt M6 x 40mm | 1 |
| 20 | 6349-E | Bearing ring for inner guard tube | 1 |
| 21 | 6348-E | Bearing ring for outer guard tube | 1 |
| 22 | 8109 | Stopper | 6 |
| 23 | 6351-E | Inner shield | 1 |
| 24 | 6350-E | Outer shield | 1 |
| 25 | 6352 | Complete shield | 1 |

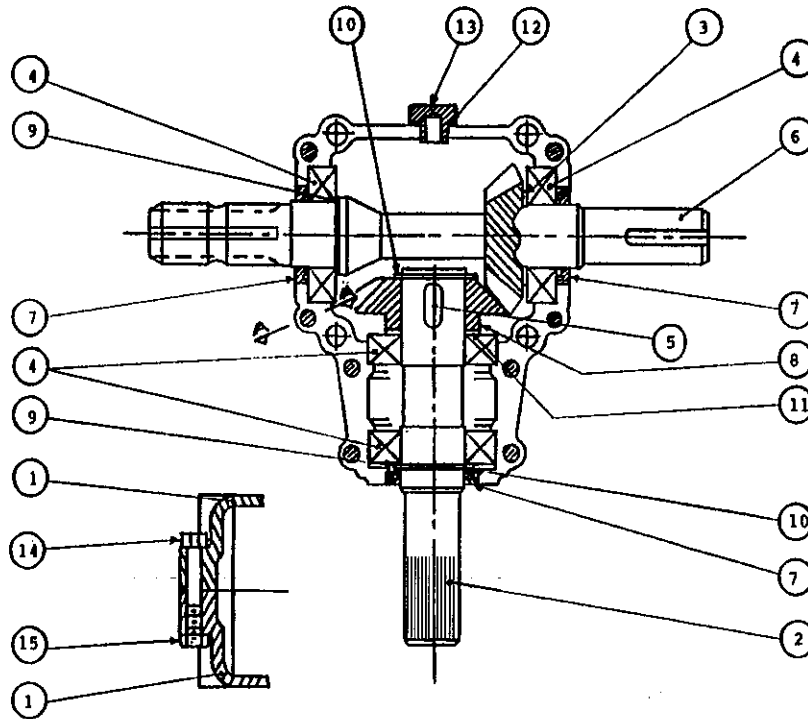
10

P.T.O. SHAFT # 8114 (T50)



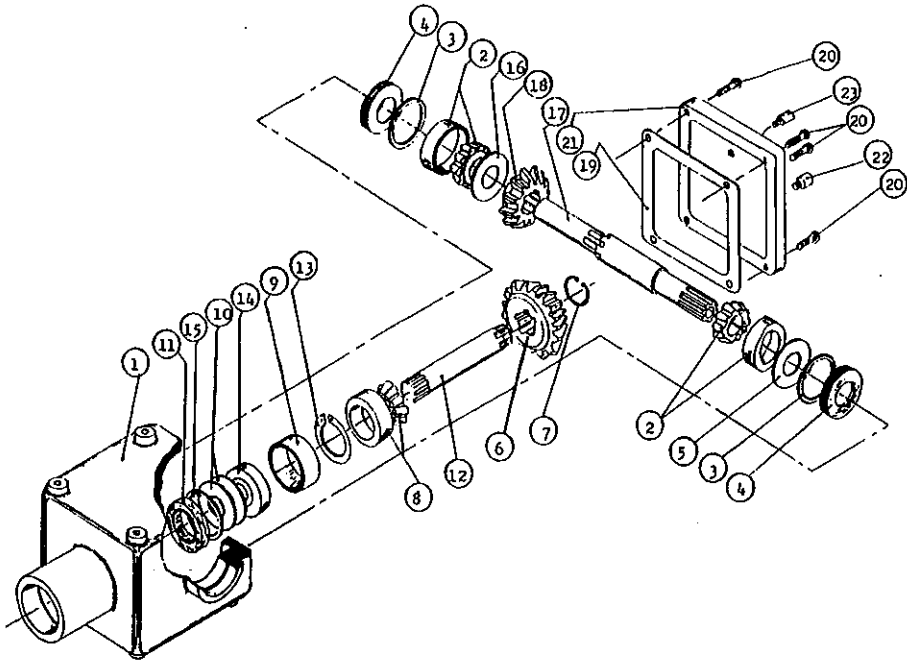
| REF. | PART # | DESCRIPTION | QTY |
|------|--------|---|-----|
| 1 | 8221 | Safety shear yoke (2 bolts) | 1 |
| 2 | 8073 | U joint + 4 retaining rings + 1 grease fitting | 2 |
| 3 | 8061 | Retaining ring | 8 |
| 4 | 8110 | Grease fitting | 2 |
| 5 | 8079 | Yoke for inner tube | 1 |
| 6 | 6341 | Stopper for inner tube | 1 |
| 7 | 8077 | Inner tube | 1 |
| 8 | 8076 | Outer tube | 1 |
| 9 | 8142 | Stopper for outer tube | 1 |
| 10 | 8074 | Yoke for outer tube | 1 |
| 11 | 8068 | Yoke stopper 1 11/16" | 1 |
| 12 | 8113 | Yoke with hole 1 3/8"-6 splines + yoke fitting | 1 |
| 13 | 8235 | P.T.O. section, side with safety shear bolt, inner part, without protector | 1 |
| 14 | 8236 | P.T.O. section, side without safety shear bolt, outer part, without protector | 1 |
| 15 | 8223 | Adaptor (2 bolts) | 1 |
| 16 | 8069 | Yoke and shearplate | 1 |
| 17 | 8070 | Ball | 17 |
| 18 | 8071 | Grease fitting | 1 |
| 19 | 8072 | Safety shear bolt M10 x 50mm | 1 |
| 20 | 8084-E | Bearing ring for inner guard tube | 1 |
| 21 | 8083-E | Bearing ring for outer guard tube | 1 |
| 22 | 8109 | Stopper | 6 |
| 23 | 8086 | Inner shield | 1 |
| 24 | 8085 | Outer shield | 1 |
| 25 | 8087 | Complete shield | 1 |
| 26 | 8222 | Bolt M12 x 70mm + locknut | 2 |

GEAR BOX # 6451 (T281)



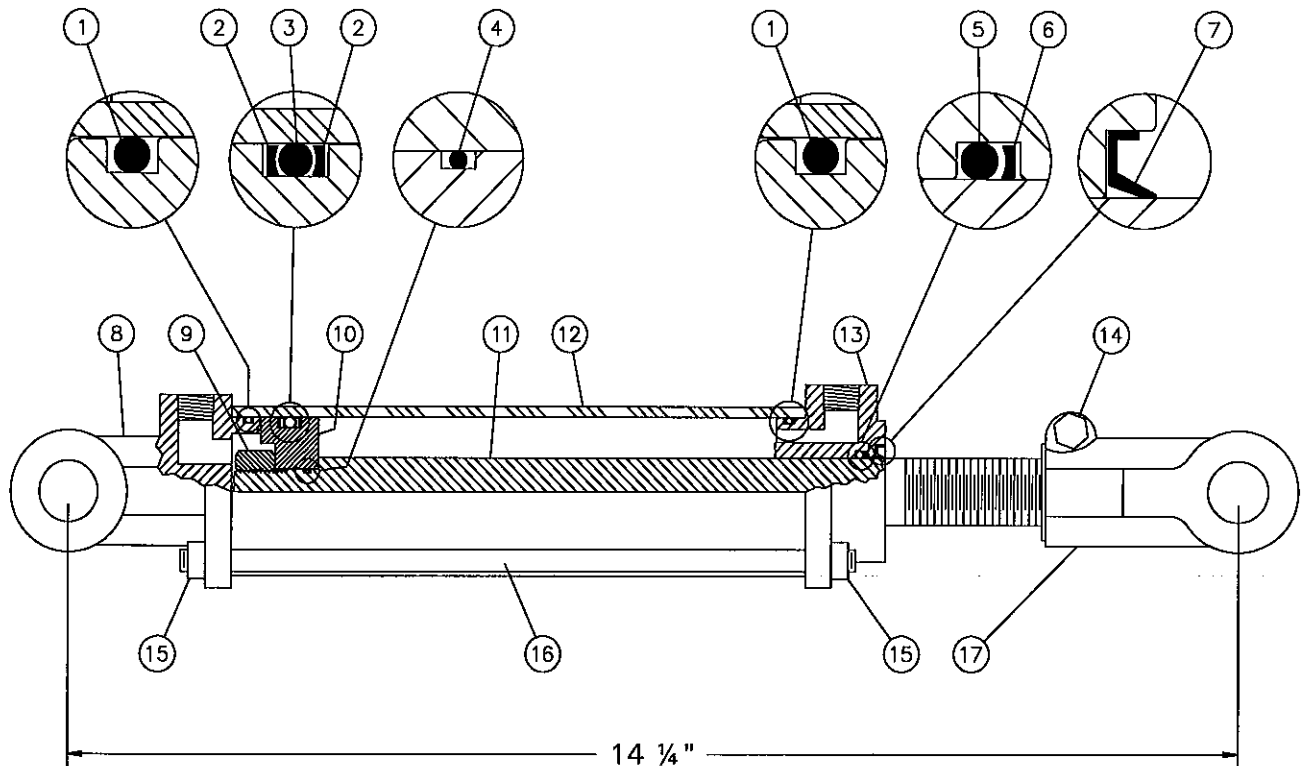
| REF. | PART # | DESCRIPTION | QTY |
|------|--------|--|-----|
| 1 | 6414 | Casing | 2 |
| 2 | 6429 | Side shaft (1 1/4" - 19 splines) | 1 |
| 3 | 6416 | Spacer 35,3 x 48 | 1 |
| 4 | 8056 | Roller bearing no. 6207 | 4 |
| 5 | 6418 | Key 10 x 8 x 30 | 1 |
| 6 | 6419 | Impeller shaft (1 1/4" & 1 3/8" - 6 splines) | 1 |
| 7 | 6420 | Seal 35 x 52 x 7 | 3 |
| 8 | 6421 | Gear Z19 | 1 |
| 9 | 6422 | Spacer 35.3 x 0.5 | 2 |
| 10 | 6423 | Snap ring 35 UNI7435 | 2 |
| 11 | 6424 | Spacer 35.3 x 0.6 | 1 |
| 12 | 6425 | Oil seal | 1 |
| 13 | 6426 | Oil plug | 1 |
| 14 | 6427 | Bolt M8 x 55 | 8 |
| 15 | 6428 | Nut M8 | 8 |

GEAR BOX # 8251 (T27D)



| REF. | PART # | DESCRIPTION | QTY |
|------|--------|--|-----|
| 1 | 8043 | Casing | 1 |
| 2 | 8044 | Roller bearing no. 30208 | 2 |
| 3 | 8045 | Inside circlip 80mm | 2 |
| 4 | 8046 | Oil seal 40 x 80 x 12mm | 2 |
| 5 | 8047 | Adjusting washer | 1 |
| 6 | 8048 | Gear Z18 | 1 |
| 7 | 8049 | Outside circlip 40mm | 1 |
| 8 | 8050 | Roller bearing no. 30207 | 1 |
| 9 | 8051 | Spacer ring | 1 |
| 10 | 8052 | Adjusting washer | 2 |
| 11 | 8053 | Oil seal 35 x 72 x 12mm | 1 |
| 12 | 8054 | Side shaft (1 1/4" - 19 splines) | 1 |
| 13 | 8055 | Outside circlip 72mm | 1 |
| 14 | 8056 | Ball bearing no. 6207 | 1 |
| 15 | 8057 | Inside circlip 35mm | 1 |
| 16 | 8058 | Adjusting washer | 1 |
| 17 | 8252 | Impeller shaft (1.575" & 1 3/8" - 6 splines) | 1 |
| 18 | 8060 | Gear Z-18 | 1 |
| 19 | 8061 | Gasket | 1 |
| 20 | 8062 | Bolt M10 x 14mm | 4 |
| 21 | 8063 | Cover | 1 |
| 22 | 8064 | Oil plug | 1 |
| 23 | 8065 | Oil filler plug | 1 |

CYLINDER 25TR04

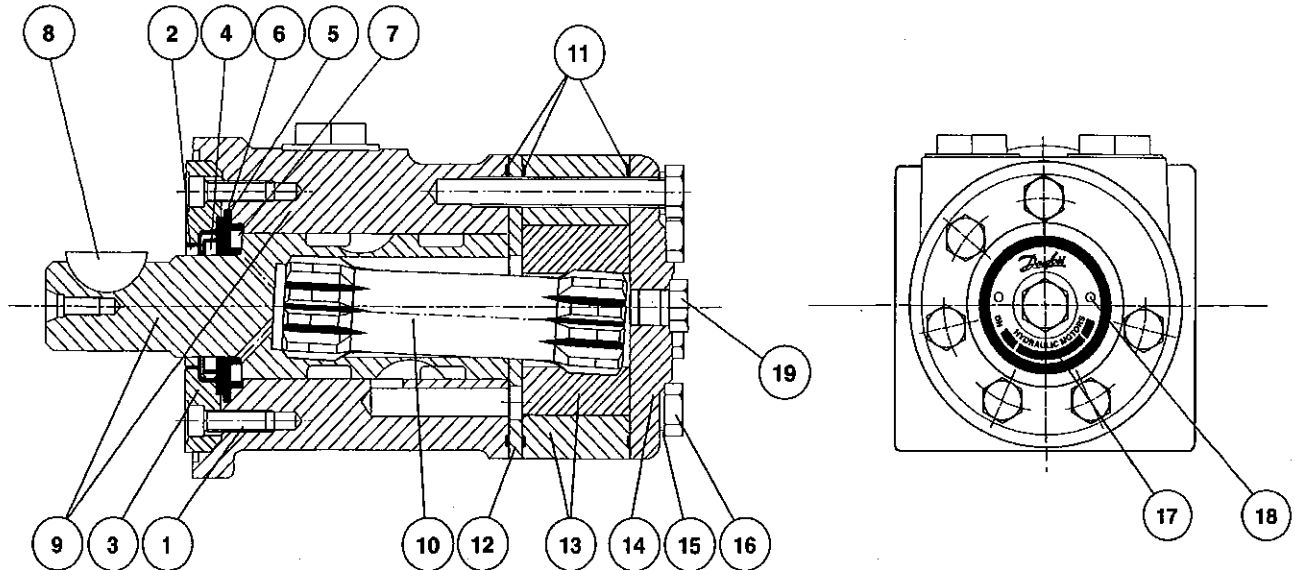


| REF. | PART # | DESCRIPTION | QTY |
|------|-------------|---|-----|
| 1 | See #RK25TR | O-ring 1/8" x 2 1/4" x 2 1/2" | 2 |
| 2 | See #RK25TR | Back-up 2 1/2" o.d. x 3/16 ø | 2 |
| 3 | See #RK25TR | O-ring 3/16" x 2 1/8" x 2 1/2" | 1 |
| 4 | See #RK25TR | O-ring 1/16" x 5/8" x 3/4" | 1 |
| 5 | See #RK25TR | O-ring 1/8" x 1 1/8" x 1 3/8" | 1 |
| 6 | See #RK25TR | Back-up 1 3/8" o.d. x 1/8" ø | 1 |
| 7 | See #RK25TR | Wiper 1 1/8" i.d. x 1 5/8" o.d. | 1 |
| 8 | 492401 | Yoke (for 2 1/2" tube) | 1 |
| 9 | Std. | Nut 3/4" NF | 1 |
| 10 | 4924-31 | Piston 2 1/2" ø | 1 |
| 11 | 491980-04 | Piston rod 1 1/8" | 1 |
| 12 | 491668-04 | Cylinder body 2 1/2" ø | 1 |
| 13 | 492421 | Head (for 2 1/2" tube) | 1 |
| 14 | Std. | Bolt 3/8" NC x 2 1/4" + nut | 1 |
| 15 | Std. | Nut 3/8" NC | 8 |
| 16 | Std. | Threaded rod 3/8" NC x 8" lg | 4 |
| 17 | 458599 | Yoke (for 1 1/8" rod) | 1 |
| NI* | 8183 | Pin 1" ø + cotter pin | 2 |
| NI* | RK25TR | Repair kit for cylinder 2 1/2" (includes # 1, 2, 3, 4, 5, 6, & 7) | 1 |

10

*NI = NOT ILLUSTRATED

HYDRAULIC MOTOR DH 100, DH 125 & DH 250










| REF. | CODE # | DESCRIPTION | QTY | | |
|------|----------|--|----------|--------|--------|
| | | | DH 100 | DH 125 | DH 250 |
| 1 | 681X1961 | Screw M5 x 16mm..... | 6 | 6 | 6 |
| 2 | 151-1313 | Dust seal ring | 1 | 1 | 1 |
| 3 | 151-1827 | Spigot flange | 1 | 1 | 1 |
| 4 | 633B3385 | Shaft seal BAKDH ring | 1 | 1 | 1 |
| 5 | 633B1333 | O-ring | 1 | 1 | 1 |
| 6 | 151-1608 | Bearing race | 1 | 1 | 1 |
| 7 | 151-1458 | Axial needle bearing | 1 | 1 | 1 |
| 8 | 682L9054 | Woodruff key | 1 | 1 | 1 |
| 9 | ----- | Housing and output shaft | not sold | | |
| 10 | 151-2645 | Cardan shaft..... | 1 | - | - |
| 10 | 151-2646 | Cardan shaft..... | - | 1 | - |
| 10 | 151-2649 | Cardan shaft..... | - | - | 1 |
| 11 | 633B1173 | O-ring | 3 | 3 | 3 |
| 12 | 151-1713 | Distributor plate | 1 | 1 | 1 |
| 13 | 151-1128 | Gear wheel set..... | 1 | - | - |
| 13 | 151-1112 | Gear wheel set..... | - | 1 | - |
| 13 | 151-1193 | Gear wheel set..... | - | - | 1 |
| 14 | 151-2641 | End cover | 1 | 1 | 1 |
| 15 | 684X2481 | Washer | 6 | 6 | 6 |
| 16 | 681X0180 | Screw M8 x 1.25mm Din 931 x 40mm lg..... | 6 | - | - |
| 16 | 681X0181 | Screw M8 x 1.25mm Din 931 x 45mm lg..... | - | 6 | - |
| 16 | 681X0184 | Screw M8 x 1.25mm Din 931 x 60mm lg..... | - | - | 6 |
| 17 | 151A0415 | Name plate | 1 | 1 | 1 |
| 18 | 681Z1011 | Drive screw | 2 | 2 | 2 |
| 19 | 631X2013 | Drain plug 7/16"-20 UNF | 1 | 1 | 1 |
| NI* | 151-1273 | Set of seals | 1 | 1 | 1 |






*NI = NOT ILLUSTRATED

TORQUE CHART

TORQUE SPECIFICATION TABLE

| Thread UNC and UNF | | Grade 2  | | | | Grade 5    | | | | Grade 8*    | | | |
|--------------------|-------|---|--------------------|-----------------------|-----------------------|--|--------------------|-----------------------|-----------------------|--|--------------------|-----------------------|-----------------------|
| Bolt size | | Torque | | | | Torque | | | | Torque | | | |
| Inches | mm | Pound feet min. | Pound feet max. | Newton meters min. | Newton meters max. | Pound feet min. | Pound feet max. | Newton meters min. | Newton meters max. | Pound feet min. | Pound feet max. | Newton meters min. | Newton meters max. |
| 1/4 | 6.35 | 5 | 6 | 6.8 | 8.13 | 9 | 11 | 12.2 | 14.9 | 12 | 15 | 16.3 | 30.3 |
| 5/16 | 7.94 | 10 | 12 | 13.6 | 16.3 | 17 | 20.5 | 23.1 | 27.8 | 24 | 29 | 32.5 | 39.3 |
| 3/8 | 9.53 | 20 | 23 | 27.1 | 31.2 | 35 | 42 | 47.5 | 57.0 | 45 | 54 | 61.0 | 73.2 |
| 7/16 | 11.11 | 30 | 35 | 40.7 | 47.4 | 54 | 64 | 73.2 | 86.8 | 70 | 84 | 94.9 | 113.9 |
| 1/2 | 12.70 | 45 | 52 | 61.0 | 70.5 | 80 | 96 | 108.5 | 130.2 | 110 | 132 | 149.2 | 179.0 |
| 9/16 | 14.29 | 65 | 75 | 88.1 | 101.6 | 110 | 132 | 149.2 | 179.0 | 160 | 192 | 217.0 | 260.4 |
| 5/8 | 15.88 | 95 | 105 | 128.7 | 142.3 | 150 | 180 | 203.4 | 244.1 | 220 | 264 | 298.3 | 358.0 |
| 3/4 | 19.05 | 150 | 185 | 203.3 | 250.7 | 270 | 324 | 366.1 | 439.3 | 380 | 456 | 515.3 | 618.3 |
| 7/8 | 22.23 | 160 | 200 | 216.8 | 271.0 | 400 | 480 | 542.4 | 650.9 | 600 | 720 | 813.6 | 976.3 |
| 1 | 25.40 | 250 | 300 | 338.8 | 406.5 | 580 | 696 | 786.5 | 943.8 | 900 | 1080 | 1220.4 | 1464.5 |
| 1 1/8 | 25.58 | - | - | - | - | 800 | 880 | 1084.8 | 1193.3 | 1280 | 1440 | 1735.7 | 1952.6 |
| 1 1/4 | 31.75 | - | - | - | - | 1120 | 1240 | 1518.7 | 1681.4 | 1820 | 2000 | 2467.9 | 2712.0 |
| 1 3/8 | 34.93 | - | - | - | - | 1460 | 1680 | 1979.8 | 2278.1 | 2380 | 2720 | 3227.3 | 3688.3 |
| 1 1/2 | 38.10 | - | - | - | - | 1940 | 2200 | 2630.6 | 2983.2 | 3160 | 3560 | 4285.0 | 4827.4 |

* Thick nuts must be used with grade 8 bolts.

| Size of screw | Thread | Pitch (mm) | Grade 4T   | | | | Grade 7T  | | | | Grade 8T   | | | |
|---------------|--------|------------|--|--------------------|-----------------------|-----------------------|--|--------------------|-----------------------|-----------------------|--|--------------------|-----------------------|-----------------------|
| | | | Torque | | | | Torque | | | | Torque | | | |
| | | | Pound feet min. | Pound feet max. | Newton meters min. | Newton meters max. | Pound feet min. | Pound feet max. | Newton meters min. | Newton meters max. | Pound feet min. | Pound feet max. | Newton meters min. | Newton meters max. |
| M6 | UNC | 1.00 | 3.6 | 5.8 | 4.9 | 7.9 | 5.8 | 9.4 | 7.9 | 12.7 | 7.2 | 10 | 9.8 | 13.6 |
| M8 | UNC | 1.25 | 7.2 | 14 | 9.8 | 19 | 17 | 22 | 23 | 29.8 | 20 | 26 | 27.1 | 35.2 |
| M10 | UNC | 1.5 | 20 | 25 | 27.1 | 33.9 | 34 | 40 | 46.1 | 54.2 | 38 | 46 | 51.5 | 62.3 |
| M12 | UNC | 1.75 | 28 | 34 | 37.9 | 46.1 | 51 | 59 | 69.1 | 79.9 | 57 | 66 | 77.2 | 89.4 |
| M14 | UNC | 2.0 | 49 | 56 | 66.4 | 75.9 | 81 | 93 | 109.8 | 126 | 96 | 109 | 130.1 | 147.7 |
| M16 | UNC | 2.0 | 67 | 77 | 90.8 | 104.3 | 116 | 130 | 157.2 | 176.2 | 129 | 145 | 174.8 | 196.5 |
| M18 | UNC | 2.0 | 88 | 100 | 119.2 | 136 | 150 | 168 | 203.3 | 227.6 | 175 | 194 | 237.1 | 262.9 |
| M20 | UNC | 2.5 | 108 | 130 | 146.3 | 176.2 | 186 | 205 | 252 | 277.8 | 213 | 249 | 288.6 | 337.4 |
| M8 | UNF | 1.0 | 12 | 17 | 16.3 | 23 | 19 | 27 | 25.7 | 36.6 | 22 | 31 | 29.8 | 42 |
| M10 | UNF | 1.25 | 20 | 29 | 27.1 | 39.3 | 35 | 47 | 47.4 | 63.7 | 40 | 52 | 54.2 | 70.5 |
| M12 | UNF | 1.25 | 31 | 41 | 42 | 55.6 | 56 | 68 | 75.9 | 92.1 | 62 | 75 | 84 | 101.6 |
| M14 | UNF | 1.5 | 52 | 64 | 70.5 | 86.7 | 90 | 106 | 122 | 143.6 | 107 | 124 | 145 | 168 |
| M16 | UNF | 1.5 | 69 | 83 | 93.5 | 112.5 | 120 | 138 | 162.6 | 187 | 140 | 158 | 189.7 | 214.1 |
| M18 | UNF | 1.5 | 100 | 117 | 136 | 158.5 | 177 | 199 | 239.8 | 269.6 | 202 | 231 | 273.7 | 313 |
| M20 | UNF | 1.5 | 132 | 150 | 178.9 | 203.3 | 206 | 242 | 279.1 | 327.9 | 246 | 289 | 333.3 | 391.6 |

Use the above torques when special torque is not given.

NOTE: These values apply to fasteners as received from supplier, dry, or when lubricated with normal engine oil. They do not apply if extreme pressure lubricants are used.

WARRANTY

12

PRONOVOST warrants this product to the initial purchaser for the period of one year from the date of purchase against defects in materials and workmanship.

We will replace or repair defective parts free of charge if they are returned to our plant in St-Tite, Quebec, Canada.

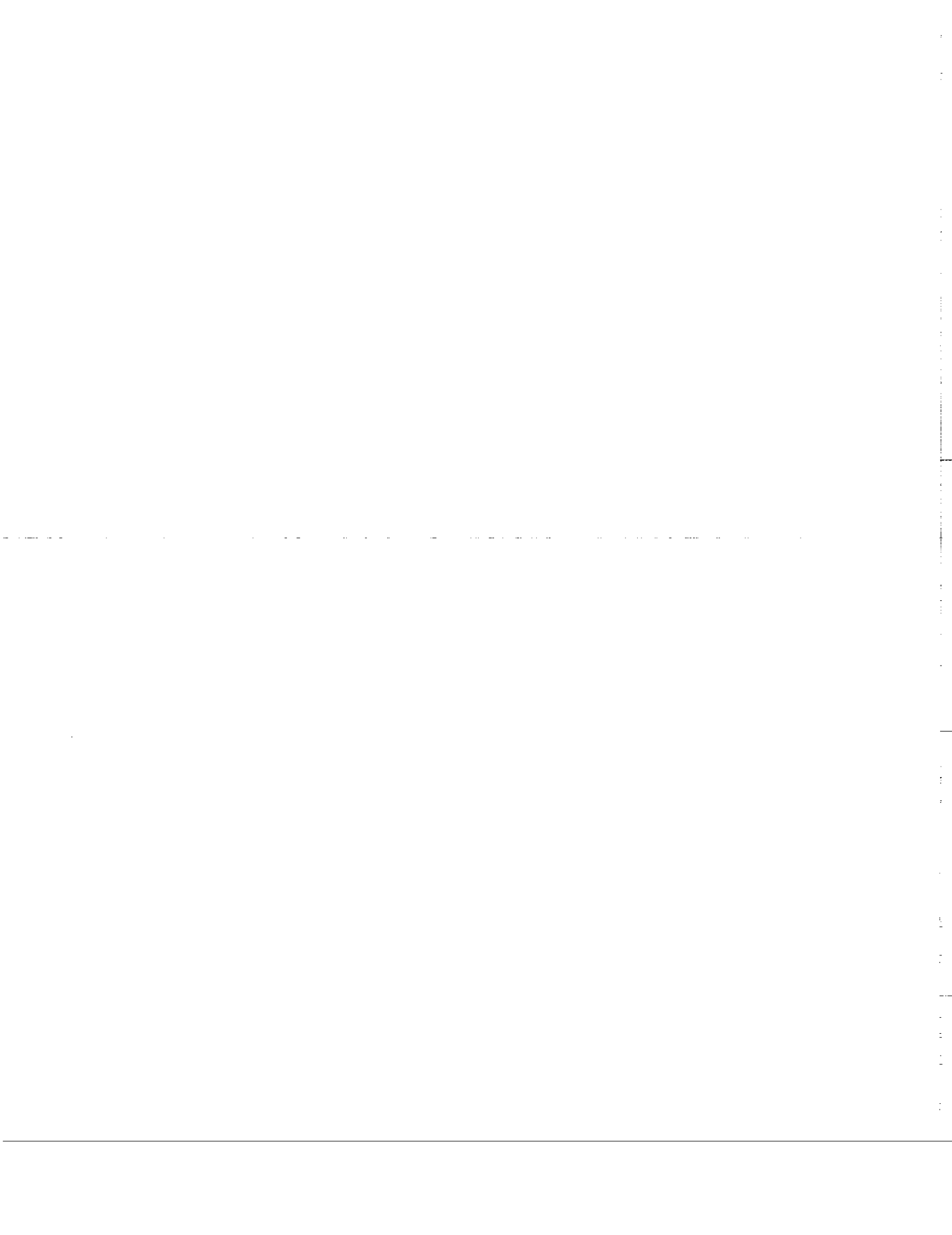
Transportation charges are the responsibility of the customer. This warranty is not transferable.

Hydraulic cylinders and motors are covered by the manufacturer of these items.

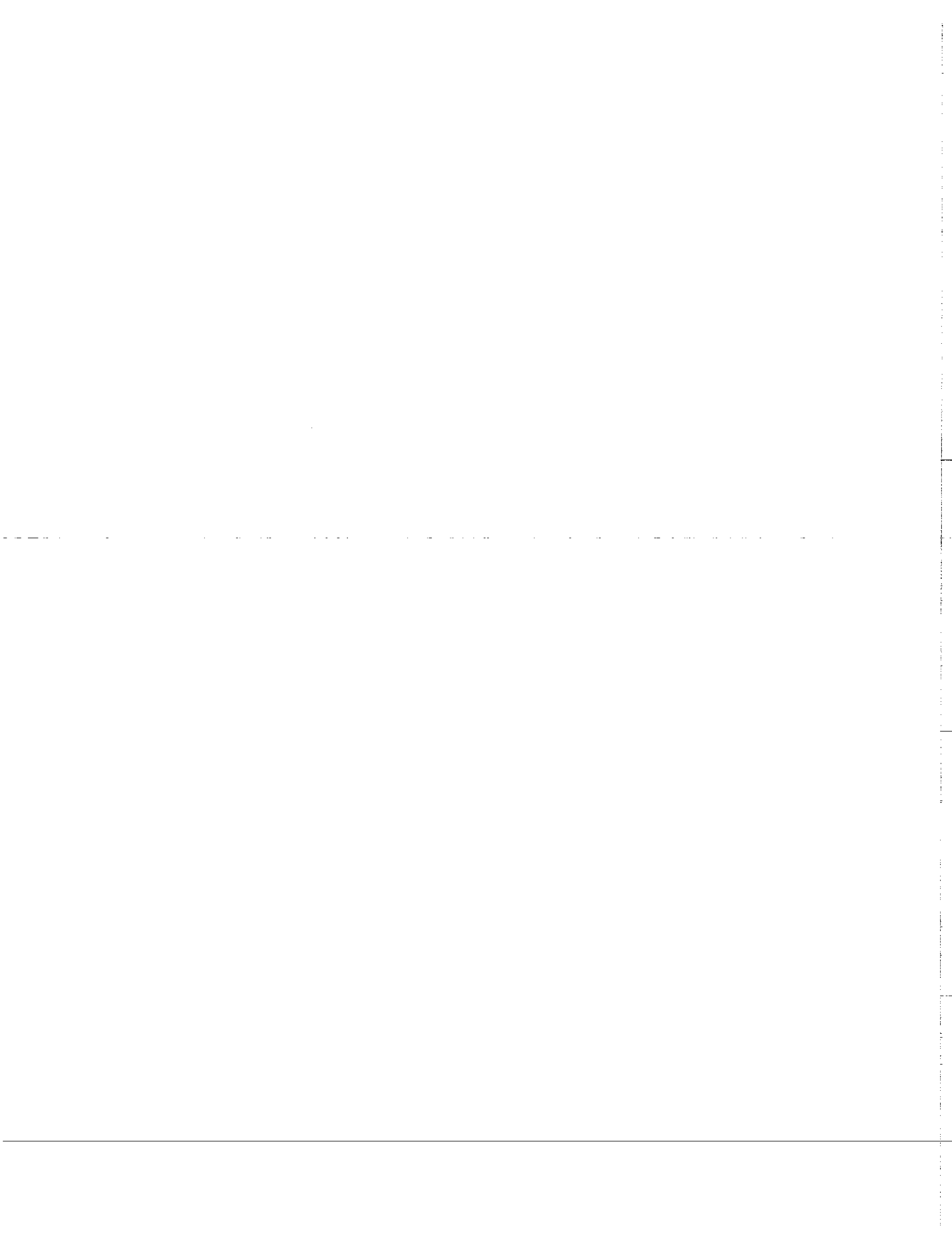
All PRONOVOST spare parts purchased are covered by a three (3) month warranty.

This warranty becomes void and nul if the equipment is modified, breaks down as the result of an accident, is not operated according to manufacturer's recommendations, damaged by negligence or if maintenance has not been carried out as specified.

Our obligation is limited to the replacement or repair of the defective part. PRONOVOST accepts no responsibility for direct or indirect consequential damages of any kind.







Ce manuel est aussi disponible en français.
Veuillez téléphoner.



LES MACHINERIES PRONOVOST INC.
260, route 159,
Saint-Tite, Quebec, Canada, G0X 3H0
Tel.: (418) 365-7551, Fax: (418) 365-7954