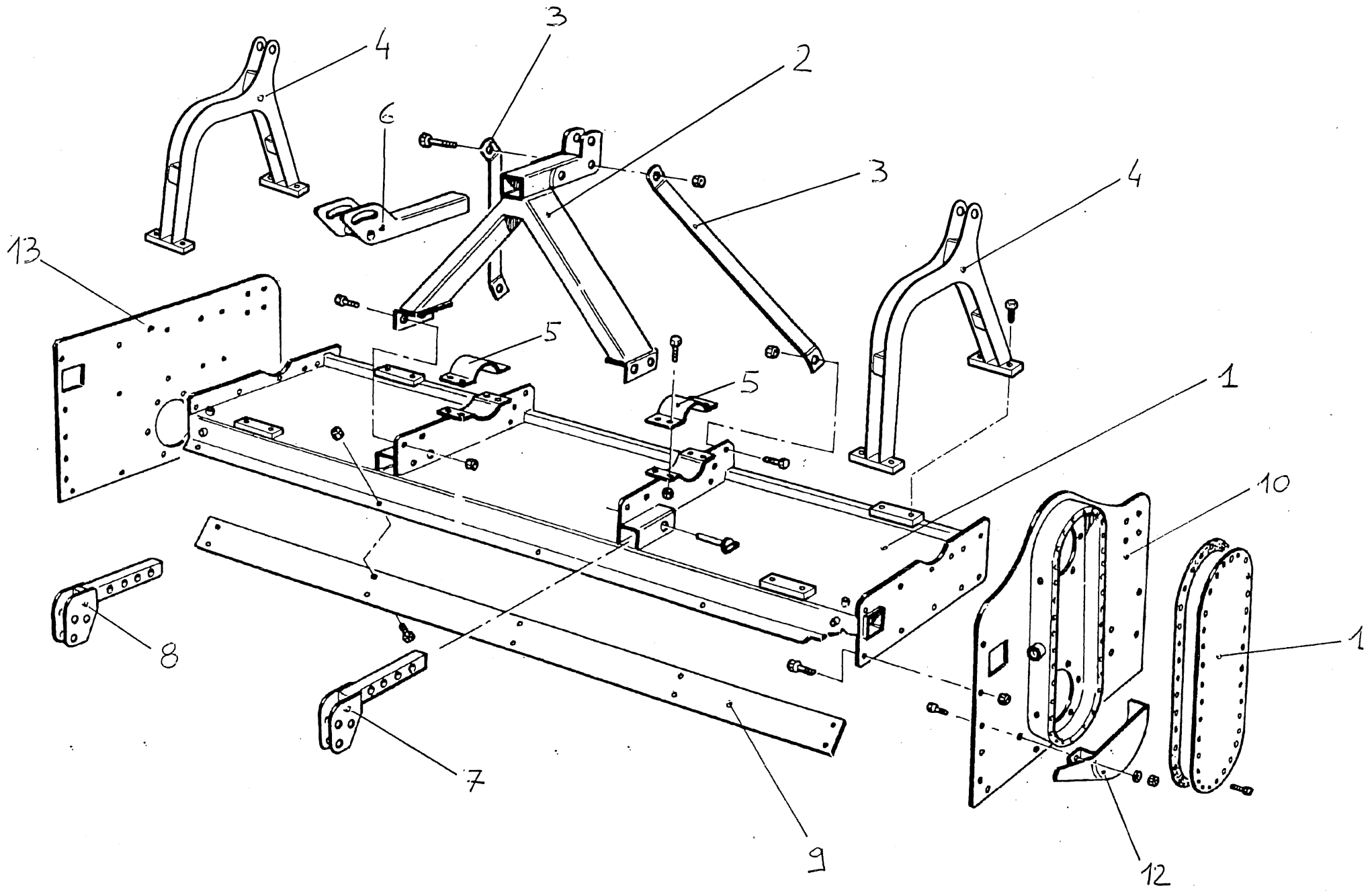


***ROTOSTONE RSC-PLUS 200***

***MASSANO***

***SPARE PARTS CATALOGUE 2010***

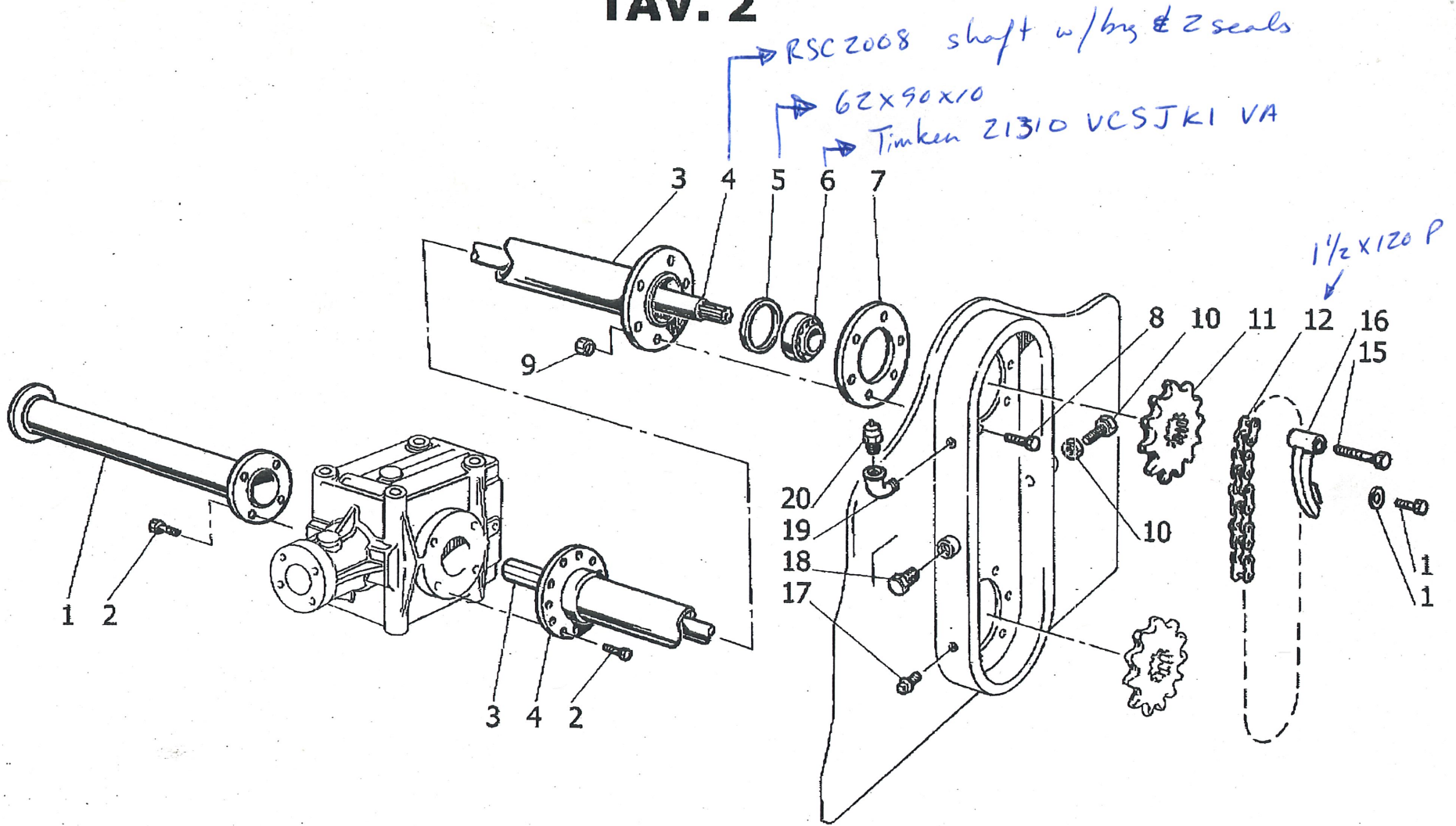
# TAV 1



30 pr. of blades

# RSC Plus - 200 - single bed

## IAV. 2



01/23/2004 10:14

MASSANO SML

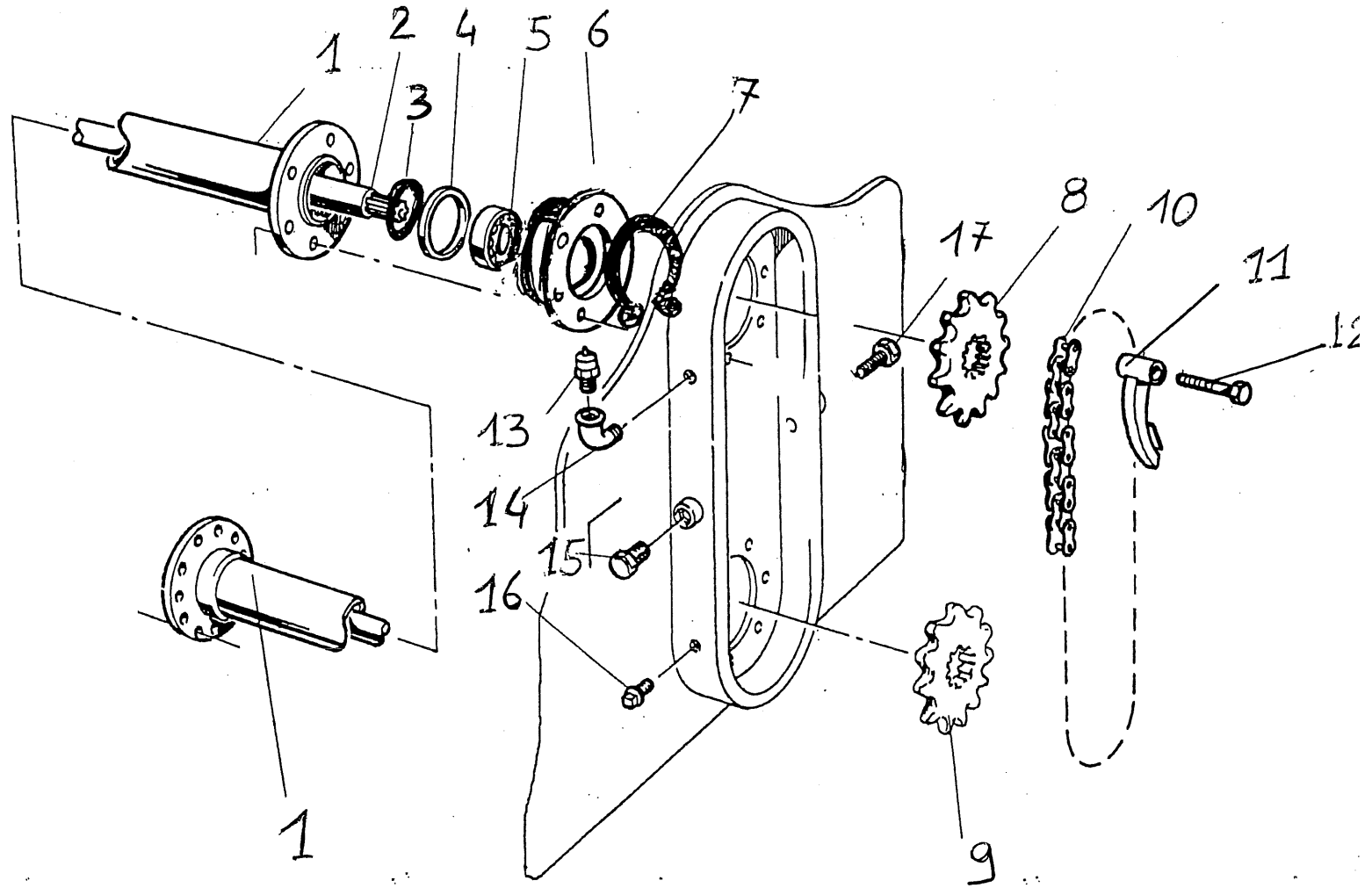
PAQ 01



## ***TAVOLA 1 - RSC-PLUS 200***

<b><i>NUMERO</i></b>	<b><i>DESCRIZIONE</i></b>	<b><i>QUANTITA' PER 1 MACCHINA</i></b>	<b><i>DA ORDINARE</i></b>
01	CASSA MODELLO	1	
02	TERZO PUNTO QUADRO DA 60	1	
03	TIRANTE TERZO PUNTO	2	
04	ARCO PER VITI LATERALI	2	
05	CONTROSTAFFA PER TUBO DA 101	2	
06	ATTACCO III° PUNTO DA 60	1	
07	ATTACCO BARRE DA 60 DESTRO	1	
08	ATTACCO BARRE DA 60 SINISTRO	1	
09	LAMA PARASASSI 140x8	1	
10	TESTATA CARTER RSC-PLUS	1	
11	COPRI CARTER RSC-PLUS	1	
12	SLITTA RSC-PLUS	1	
13	TESTATA BASSA RSC-PLUS	1	

# TAV. 2

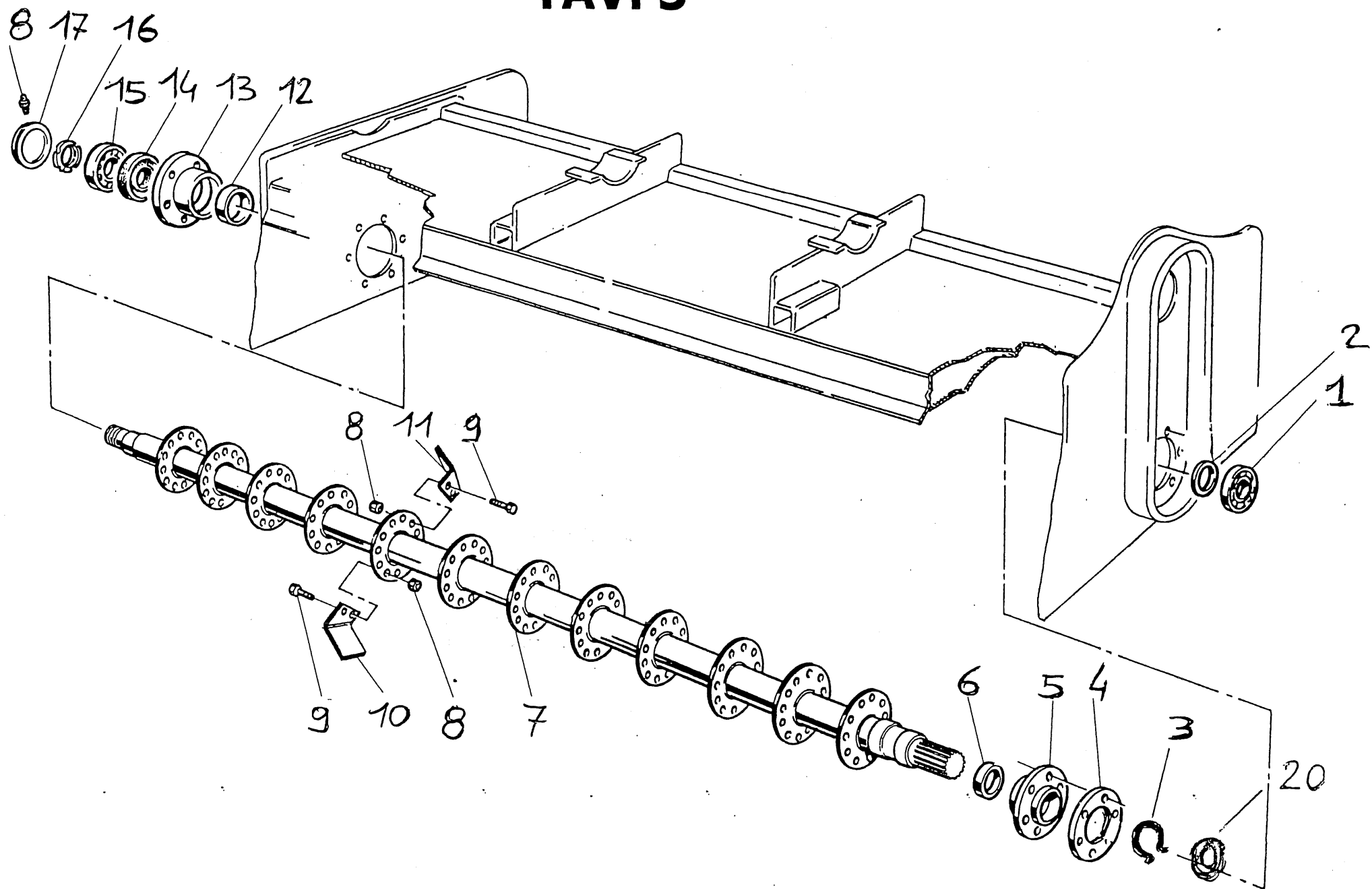


## TAVOLA 2 – RSC-PLUS 200

RSC2008

NUMERO	DESCRIZIONE	QUANTITA' PER 1 MACCHINA	DA ORDINARE
01	TUBO DA 101 LATO TRASMISSIONE	1	
02	ALBERO DI TRASMISSIONE RSC-PLUS 200	1	
03	BOCCOLA PER ALBERO	1	
04	CORTECO 62x90x10	1	
05	CUSCINETTO 21310	1	
06	SUPPORTO RSC PARTE ALTA	1	
07	SEEGER DA INTERNI DIAM. 110 mm	1	
08	PIGNONE Z 11 1" ½ <i>RSC TAV 28</i>	1	
09	PIGNONE Z 12 1" ½ <i>RSC TAV 29</i>	1	
10	CATENA ASA 120 HE 36 MG 1" ½	1	
11	TENDICATENA RSC <i>RSC TAV 211</i> →	1	
12	PERNO PER TENDICATENA RSC ← <i>included</i>	1	
13	TAPPO SFIATO ½	1	
14	GOMITO MASCHIO FEMMINA DA ½	1	
15	TAPPO ESAGONALE DA 1" ¼	1	
16	TAPPO TESTATA BRUGOLA DA ½	1	
17	VITE TENDICATENA M18	1	

# TAV. 3





# TAV. 3

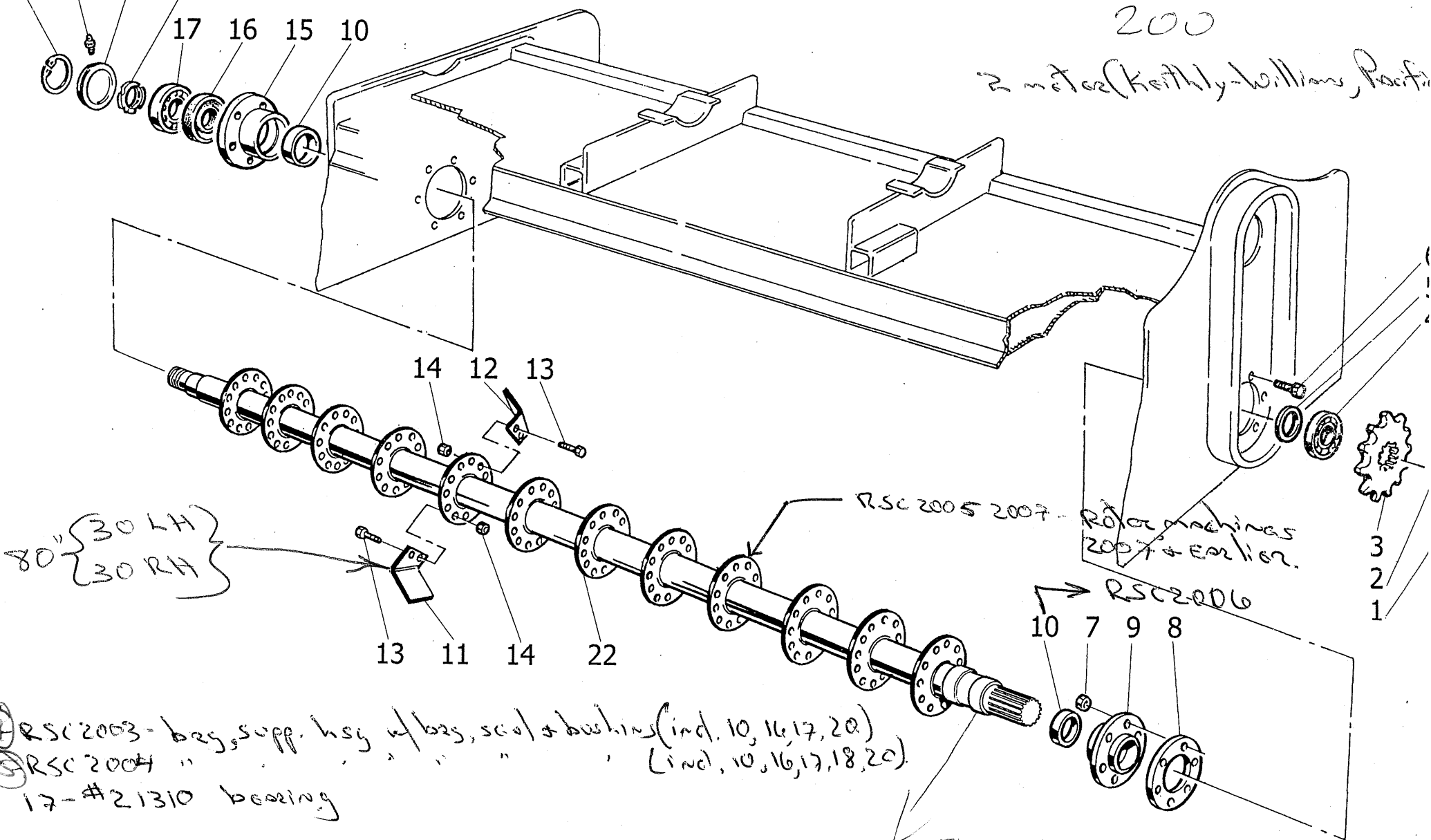
RSC-PLUS

200

2 meter (Keithly-Williams, Pacific)

20 21 19 18 - RSC2007 (RSC TAV316)

17 16 15 10



- 9 RSC2003 - bag, supp. hsg w/ bag, seal & bushing (incl. 10, 16, 17, 20)
- 10 RSC2004 " " " " " " (incl. 10, 16, 17, 18, 20)
- 17 - #21310 bearing

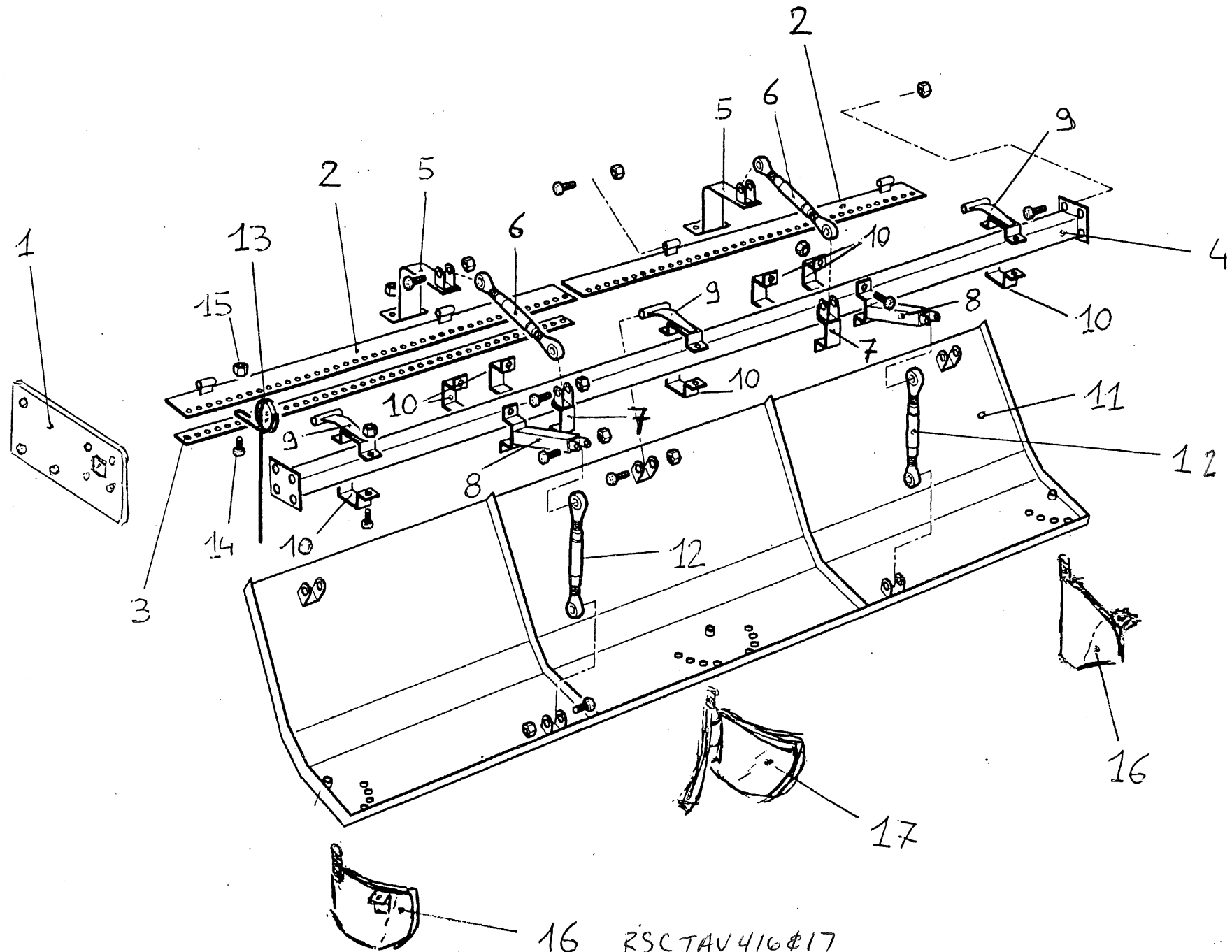
The hub is welded on the rotor.



## TAVOLA 3 – RSC-PLUS 200

NUMERO	DESCRIZIONE	QUANTITA' PER 1 MACCHINA	DA ORDINARE
01	CUSCINETTO 21310	1	
02	CORTECO 70x100x10	1	
03	SEEGER DA 110 mm	1	
04	GUARNIZIONE CARTA	1	
05	SUPPORTO RSC LATO CATENA	1	
06	BOCCOLA CEMENTATA 70x60x22	1	
07	ROTORE COMPLETO DI PUNTE	1	
08	DADO AUTO DIAM. 14x1.5	60	MSORSC TAV 38
09	VITE 14x40x1.5 C.L. 10.9	60	TAV 39
10	ZAPPA 90x10 FORO 14 DX	30	MSO 633/2RH
11	ZAPPA 90x10 FORO 14 SX	30	LH
12	BOCCOLA CEMENTATA 70x60x22	1	
13	SUPPORTO RSC LATO TRAINATO	1	
14	CORTECO 70x100x10	1	
15	CUSCINETTO 21310	1	
16	GHIERA AUTO. DA 50 mm	1	
17	COPERCHIO SUPPORTO RSC	1	
18	INGRASSATORE M10x1.5	1	
19	SEEGER DIAM. 115 mm	1	
20	GHIERA AUTO. DA 45 mm	1	

# AV 4



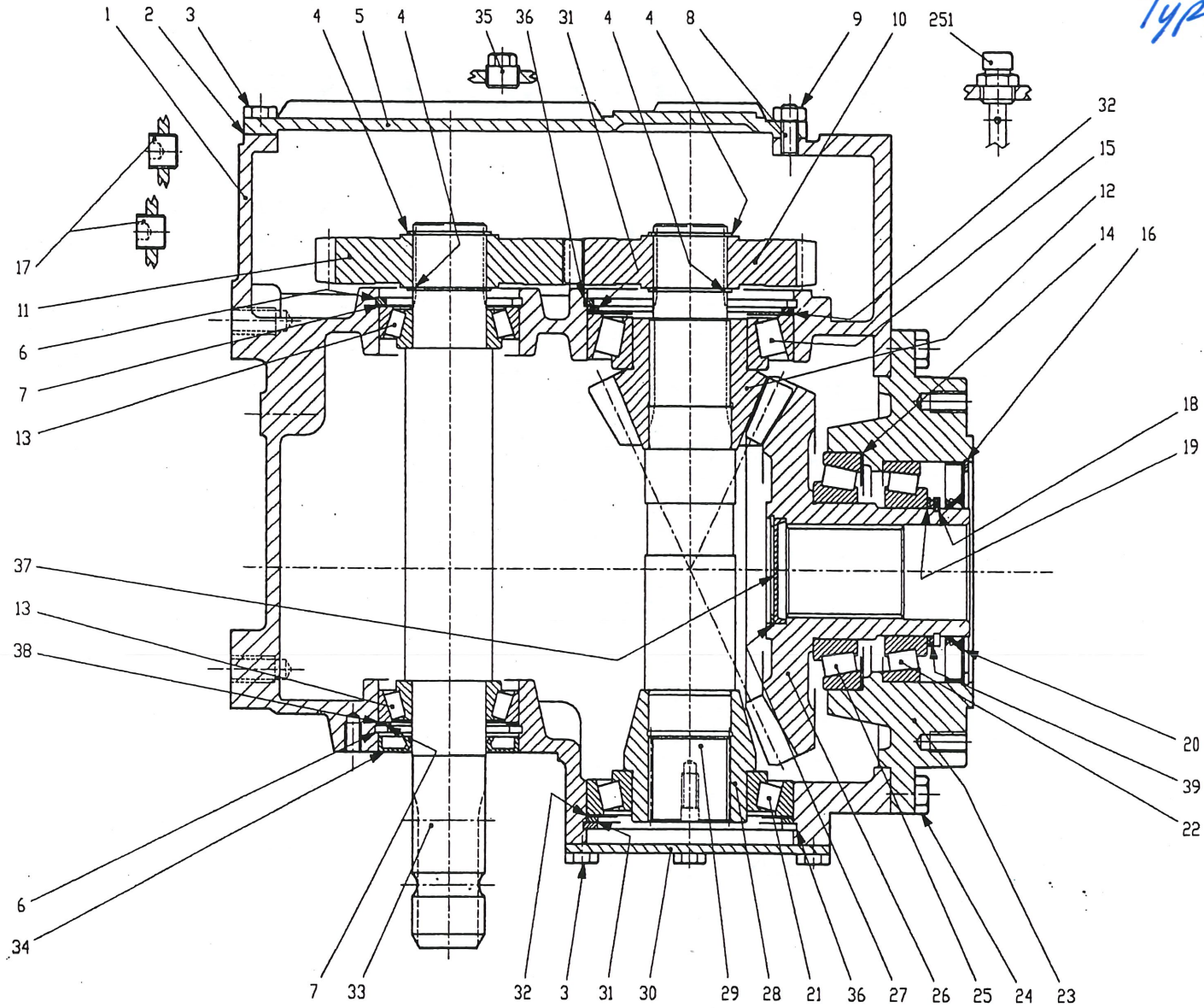
16 RSC TAV 416 Ø17

## **TAVOLA 4 – RSC-PLUS 200**

<b>NUMERO</b>	<b>DESCRIZIONE</b>	<b>QUANTITA' PER 1 MACCHINA</b>	<b>DA ORDINARE</b>
01	FIANCATA PER TRAVERSA DA 60	2	
02	LAMA PORTA MOLLE LARGA	2	
03	LAMA PORTA MOLLE STRETTA	2	
04	TRAVERSA PORTA COFANO DA 60	1	
05	SUPPORTO A "L" PORTA TIRANTI	2	
06	TIRANTE AMA	2	
07	STAFFA PORTA TIRANTE	2	
08	STAFFA PORTA TERZO PUNTO	2	
09	STAFFA PORTA COFANO	3	
10	CONTROSTAFFE PER TUTTE	7	
11	COFANO PER RSC-PLUS 200	2	
12	TERZO PUNTO	2	
13	MOLLE PER RSC-PLUS 200	56	
14	VITE 12x40 TUTTO FILETTO	56	
15	DADO AUTO DA M 12 mm	56	
16	VOMERO SX	1	
17	VOMERO DX	1	
18	VOMERO CENTRALE	1	

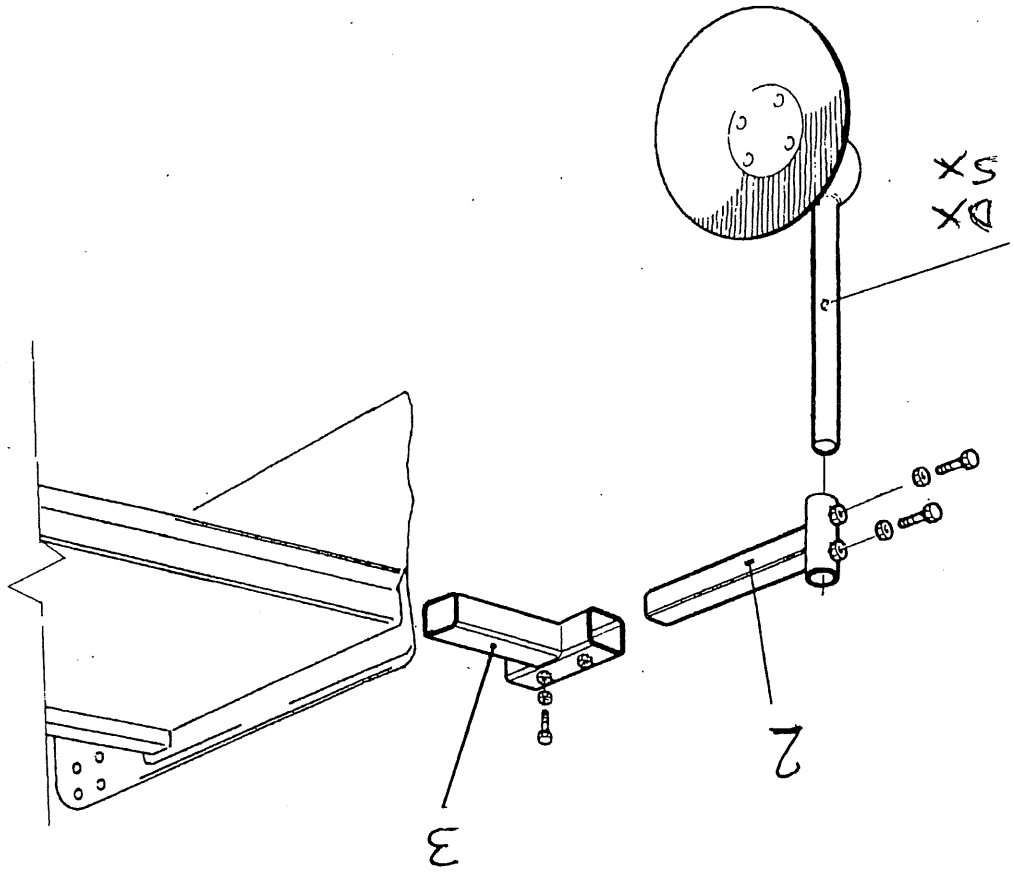
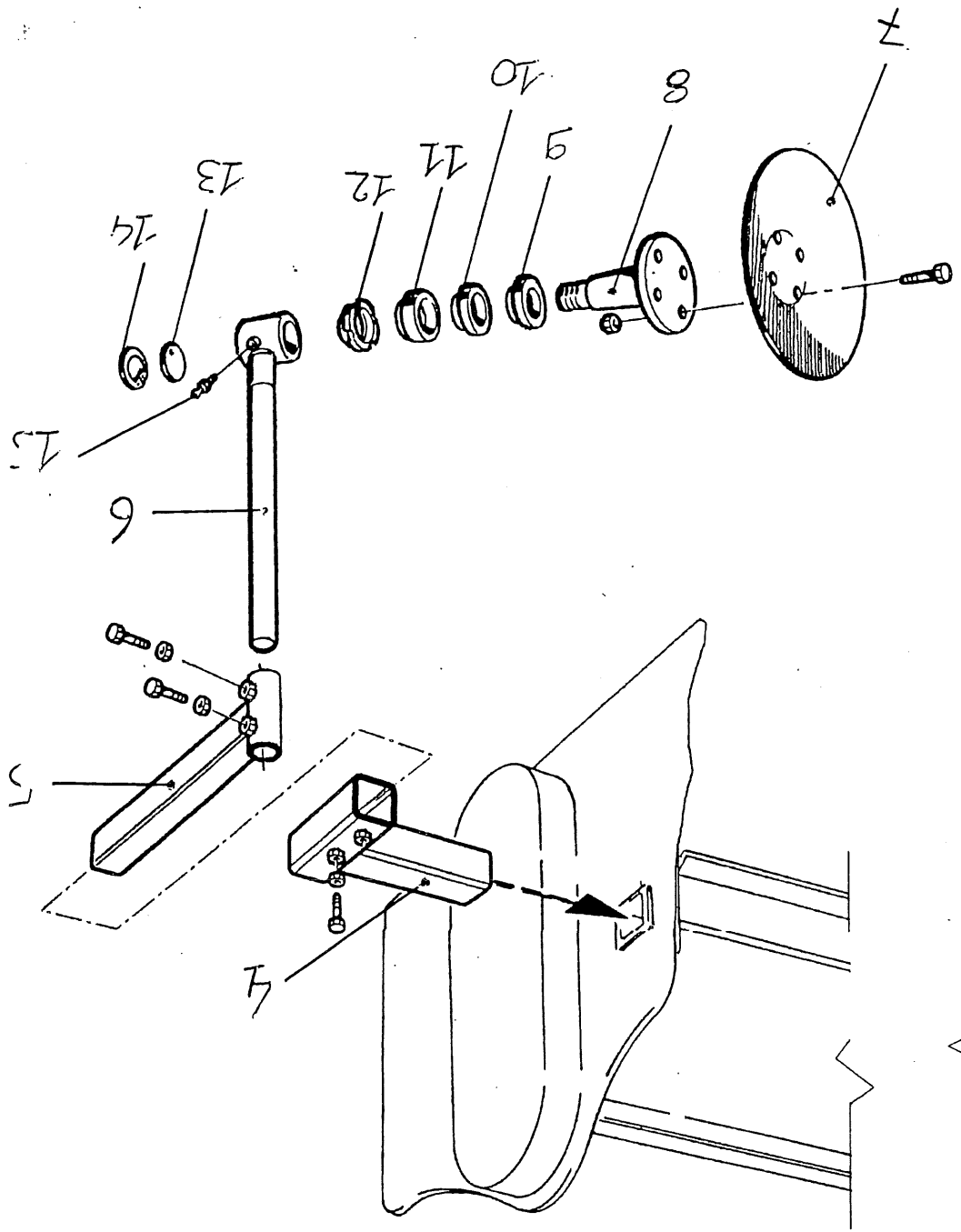
# TAV 5

M40.0187 complete gearbox  
Type MZ 817



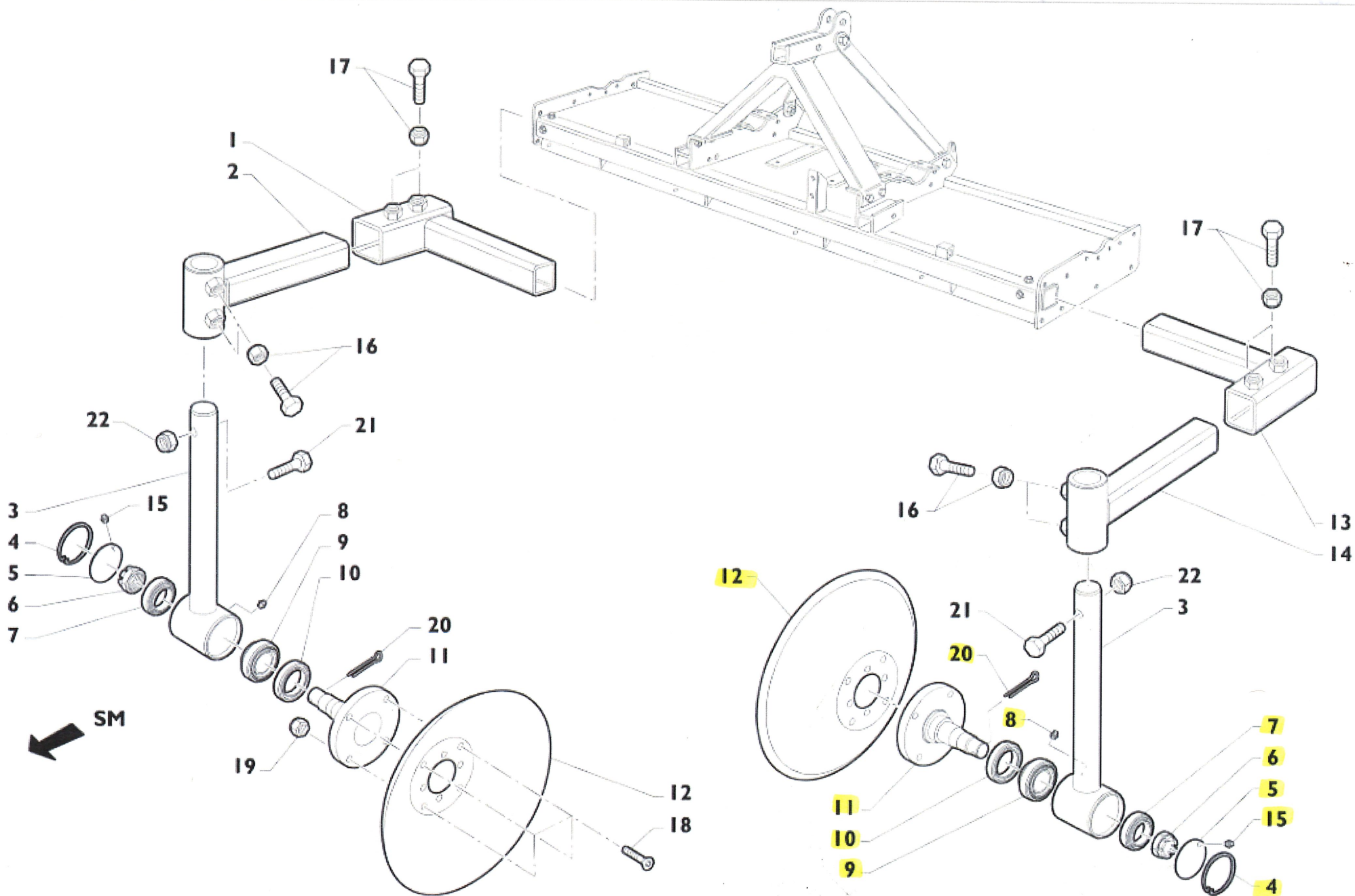
# TAVOLA 5 - RSC-PLUS 200

DENOMINAZIONE	SCAT.ING.	MZ-817F	CODICE	9.817.404.20
POS.	N° DISEGNO	PEZZI	DESCRIZIONE	
1	0.817.0301.00	1	SCATOLA	
2	0.817.7201.00	1	GUARNIZIONE	
3	8.1.1.00054	10	VITE TE UNI5739 M10X20 8,8	
4	8.5.1.00200	4	ANELLO EL.SIC.X ALB 45 UNI7435	
5	0.817.1301.00	1	COPERCHIO POSTERIORE	
6	8.5.2.01772	2	ANEL.SIC.X FORI H=4 85UNI7438	
7	0.709.7510.00	2	SPES.REG. 84.7x70.3x1.0	
8	8.1.5.01877	6	VITE PRIGION. UNI5909 M10X22	
9	8.2.1.00244	6	DADO ES. UNI588 M10 10	
10	0.819.5043.00	1	INGRANAGGIO Z=26 M=5	
11	0.819.5044.00	1	INGRANAGGIO Z=30 M=5	
12	0.819.5049.00	1	PIGNONE CONICO Z=14 M=7.87	
13	8.0.9.01108	2	CUSC.RULLI CON.CLA 32209	
14	0.144.7500.00	1	SPES.REG. 125.5X139.5	
15	8.0.9.01807	1	CUSC.RULLI CON.CLA 32214	
16	8.5.3.02004	1	AN.DI SPAL.X ALLOG.SB 130	
17	8.6.6.00088	2	TAPPO CON.ESAG.INC. 1/2"GAS	
18	8.5.1.01980	1	ANEL.SIC.xALB.H=4 75 UNI7436	
19	0.717.7500.00	1	SPES.REG. 75.2x87.3	
20	8.7.1.02378	1	AN.TEN.LAB.P.BAUD5SL 75X130X12	
21	8.0.9.01032	1	CUSC.RULLI CON.CLA 30214	
22	8.0.9.01876	1	CUSC.RULLI CON.CLA 30215	
23	0.816.1327.00	1	FLANGIA DI USCITA	
24	8.1.1.01891	8	TE UNI5739 M12X35 DCRT320 10.9	
25	8.0.9.01881	1	CUSC.RULLI CON.CLA 30216	
26	0.819.6003.00	1	CORONA CONICA Z=29 M=7.87	
27	8.5.2.00007	1	ANELLO EL.SIC.X FOR 62 UNI7437	
28	0.819.7100.00	1	BOCCOLA PORTA CUSC.	
29	0.819.3000.00	1	ALBERO INTERMEDIO	
30	1.824.1300.00	1	COPERCHIO TRANCIATO	
31	0.819.7101.00	2	Distanziale 124.7x111x3	
32	0.819.7500.00	2	SPES.REG. 110.2x124.8	
33	0.817.2000.00	1	ALBERO ENTRATA	
34	8.7.3.00331	1	ANEL.TEN.NORM. BA 45X85X10	
35	8.6.5.00203	1	TAPPO CON.ESAG.EST. 1/2"GAS	
36	8.5.2.01900	2	ANELLO EL.SIC.X FOR125 UNI7437	
37	8.7.0.01359	1	CAPPELLOTTI DI CHI. 62X7	
38	0.709.7500.00	1	SPES.REG. 70.3x84.7	
39	0.717.7520.00	1	SPES.REG. 75.2X84.8X2	
251	A.812.000	1	TAPPO CAR.SF.LIV. 1/2" GAS	
	0.812.7101.00	1		














9 1 1 1 1 1
















Jan - kw S.M.

emailed Robert 6/1/21

	N. OF ITEM	REF.	DESCRIPTION
1 - 13		M50.0504	HORIZONTAL SIDE DISC'S ARM RSC/RSE/RSF
2 - 14		M50.0502	VERTICAL SIDE DISC'S ARM RSC/RSE/RSF
3		M50.0503	ADJUSTABLE SIDE DISC'S ARM RSC/RSE/RSF
4		M40.0087	SEEGER RING J 2,5x85,5x83,4-180
5		M20.1019	COVER FOR SIDE DISC
6		M30.0310	NUT 30 X 2 GG
7		M40.0012	BEARING 30207
8 - 15		M30.0276	LUBRICATOR M10x1
9		M40.0013	BEARING 30208
10		M40.0056	SEAL RING NBR SERIES DOUBLE LIP 50x80x10 TG
11		M10.0300	SIDE DISC'S HUB
12		M40.0147	DISC Ø410x6 L FT63 C33
16		M30.0053	M20x55 SCREW
		M30.0221	M20 NUT
17		M30.0042	M16x55 SCREW
		M30.0220	M16 NUT
18		M30.0179	M12x45 SCREW
19		M30.0229	M12 NUT
20		M30.0273	5x50 COTTER
21		M30.0093	M10x70 SCREW
22		M30.0228	M10 NUT



6/24/21

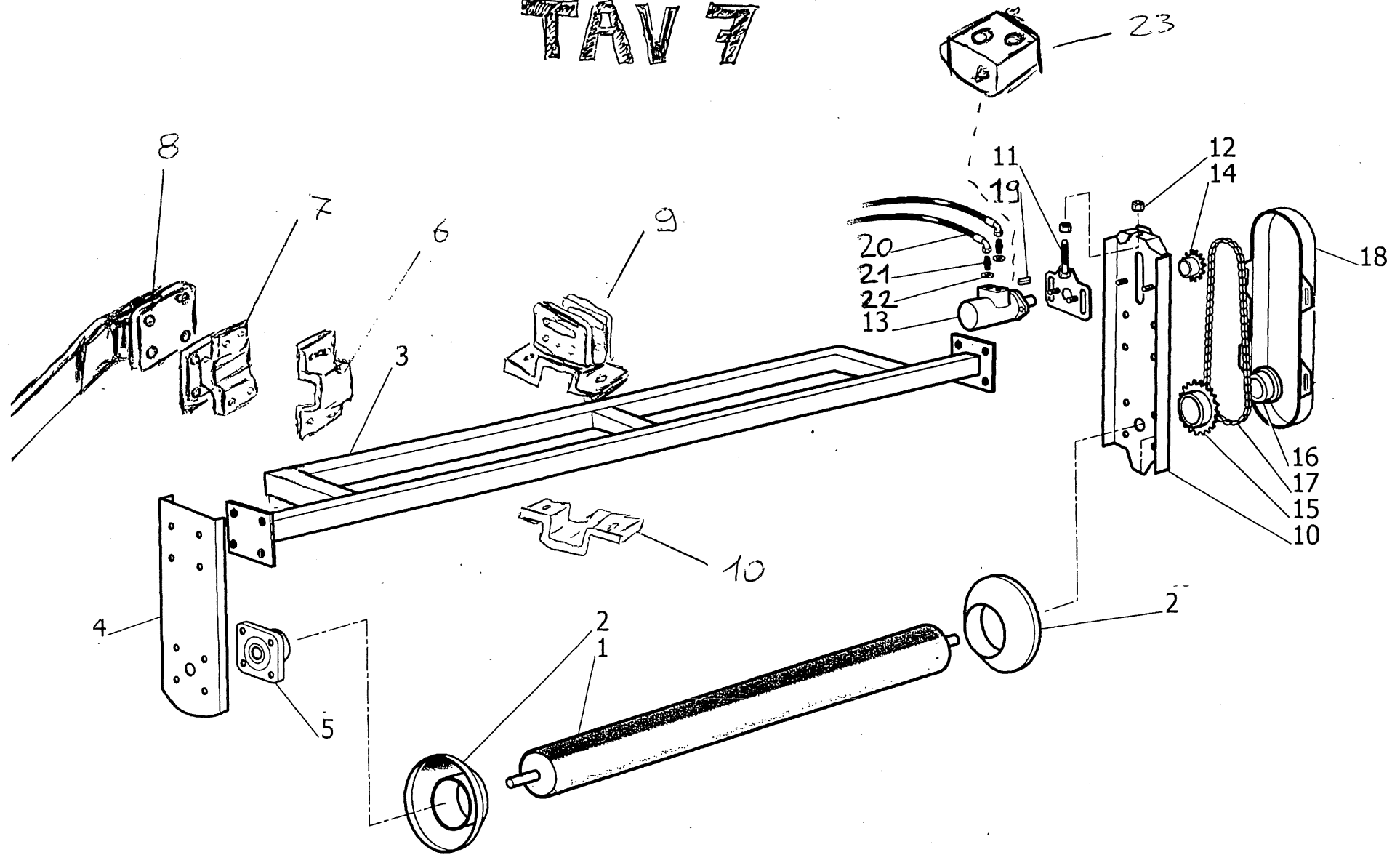
N. OF ITEM	REF.	DESCRIPTION	PRICE LIST	DISCOUNT %	NET PRICE
1 - 13	 M50.0504	HORIZONTAL SIDE DISC'S ARM RSC/RSE/RSF	52,00 €	-35%	33,80 €
2 - 14	 M50.0502	VERTICAL SIDE DISC'S ARM RSC/RSE/RSF	63,00 €	-35%	40,95 €
3	 M50.0503	ADJUSTABLE SIDE DISC'S ARM RSC/RSE/RSF	81,00 €	-35%	52,65 €
4	 M40.0087	SEEGER RING J 2,5x85,5x83,4-J80	0,60 €	-35%	0,39 €
5	 M20.1019	COVER FOR SIDE DISC	3,10 €	-35%	2,00 €
6	M30.0310	NUT 30 X 2 GG	5,10 €	-35%	3,30 €
7	 M40.0012	BEARING 30207	11,00 €	-35%	7,15 €
8 - 15	 M30.0276	LUBRICATOR M10x1	0,25 €	-35%	0,16 €
9	 M40.0013	BEARING 30208	13,00 €	-35%	8,45 €
10	 M40.0056	SEAL RING NBR SERIES DOUBLE LIP 50x80x10 TG	4,40 €	-35%	2,90 €
11	 M10.0300	SIDE DISC'S HUB	78,00 €	-35%	50,70 €
12	 M40.0147	DISC Ø410x6 L FT63 C33	68,00 €	-35%	44,20 €
16	M30.0053	M20x55 SCREW	0,84 €	-35%	0,55 €
	M30.0221	M20 NUT	0,27 €	-35%	0,17 €
17	M30.0042	M16x55 SCREW	0,48 €	-35%	0,31 €
	M30.0220	M16 NUT	0,13 €	-35%	0,08 €
18	M30.0179	M12x45 SCREW	0,33 €	-35%	0,21 €
19	M30.0229	M12 NUT	0,13 €	-35%	0,08 €
20	M30.0273	5x50 COTTER	0,10 €	-35%	0,06 €
21	M30.0093	M10x70 SCREW	0,95 €	-35%	0,62 €
22	M30.0228	M10 NUT	0,09 €	-35%	0,06 €



## ***TAVOLA 6 – RSC-PLUS 200***

<i><b>NUMERO</b></i>	<i><b>DESCRIZIONE</b></i>	<i><b>QUANTITA' PER 1 MACCHINA</b></i>	<i><b>DA ORDINARE</b></i>
01	BRACCIO DISCO LATERALE DX.	1	
01 A	BRACCIO DISCO LATERALE SX.	1	
02	SUPPORTO GUIDA DISCO SX.	1	
03	ATTACCO DISCO LATERALE SX.	1	
04	ATTACCO DISCO LATERALE DX.	1	
05	SUPPORTO GUIDA DISCO DX.	1	
06	GAMBO DISCO NUDO DX.	1	
06 A	GAMBO DISCO NUDO SX.	1	
07	DISCO NUDO DIAMETRO 420	2	
08	MOZZO PER DISCHI LATERALI	2	
09	CORTECO 50x80x10	2	
10	CUSCINETTO 30207	2	
11	CUSCINETTO 30208	2	
12	GHIERA 30x1.5	2	
13	COPERCHIO PER SUPP. DISCHI LAT.	2	
14	SEEGER DA 80 INTERNO	2	
15	INGRASSATORE M10x1 mm	2	

# TAV 7

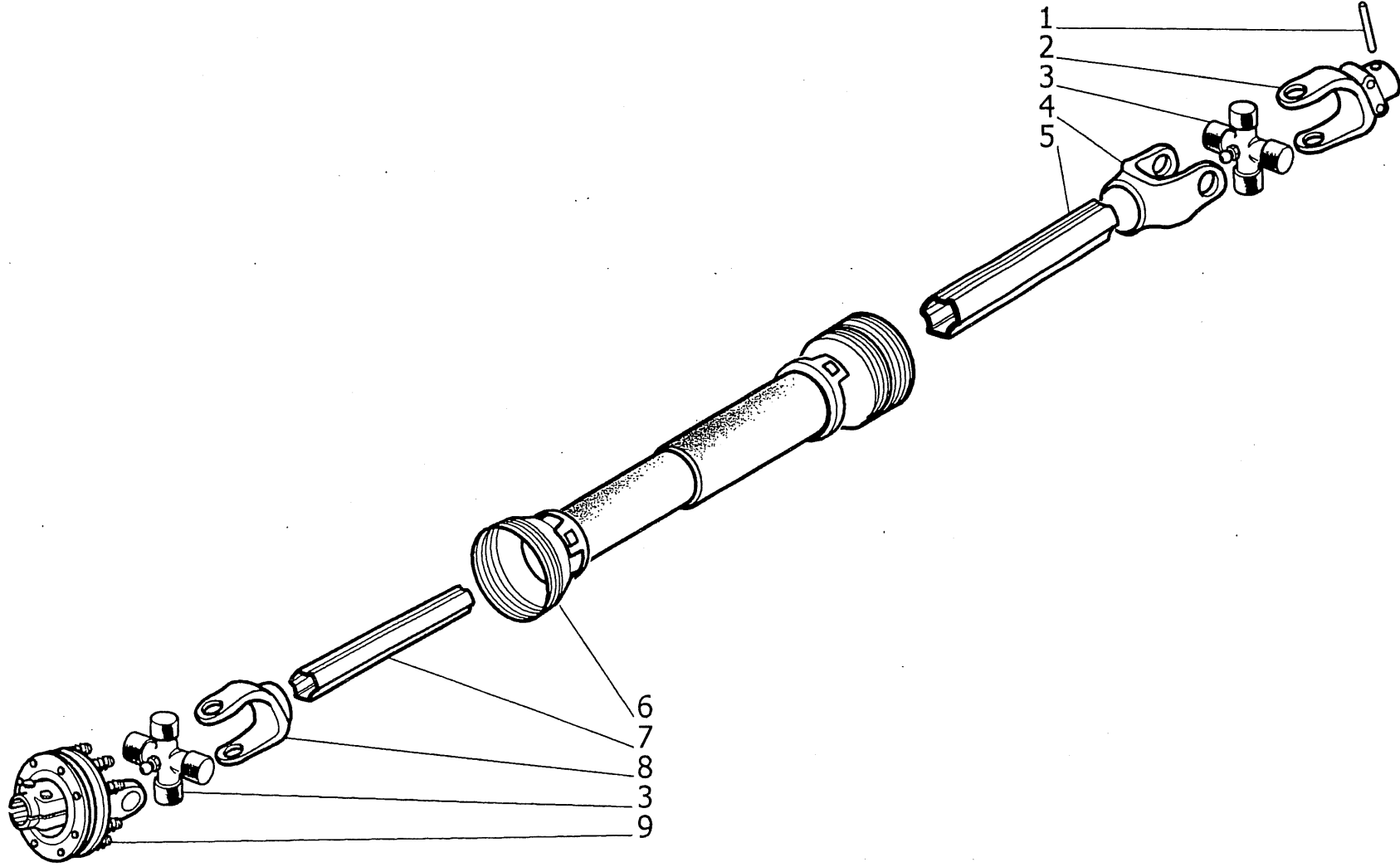




## **TAVOLA 7 – RSC-PLUS 200**

<i>NUMERO</i>	<i>DESCRIZIONE</i>	<i>QUANTITA' PER 1 MACCHINA</i>	<i>DA ORDINARE</i>
01	RULLO LISCIO PER RSC-PLUS 200	1	
02	CONO LATERALE	2	
03	TELAIO PORTA RULLO	1	
04	FIANCATA SX RULLO	1	
05	SUPPORTO RULLO UCF 208	2	
06	CONTROSTAFFA ATTACCO RULLO	2	
07	STAFFA ATTACCO RULLO	2	
08	BRACCIO GUIDA RULLO	2	
09	STAFFA ATTACCO VITI CON ASOLA	2	
10	CONTRO STAFFA ATTACCO VITI CON ASOLA	2	
11	PIASTRA SUPPORTO MOTORE IDRAULICO	1	
12	CONTRODADO M16	2	
13	MOTORE IDRAULICO SAMHYDRAULIC ADR250	1	
14	PIGNONE Z 10 1"	1	
15	PIGNONE Z 20 1"	1	
16	CALETTATORE DA 40 mm	1	
17	CATENA REINOLDS DA 1"	1	
18	CARTER COPRI CATENA	1	
19	CHIAVETTA MOTORE	1	
20	TUBO IDRAULICO DA ½ POLLICE	2	
21	NIPPLES ½ POLLICE	2	
22	RONDELLA ½ POLLICE	2	
23	VALVOLA ANTIURTO	1	

# TAV8

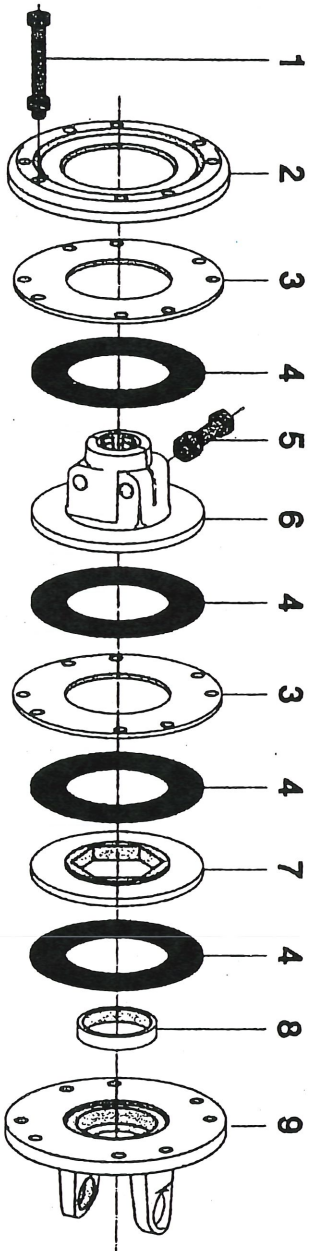


## **TAVOLA 8 – RSC-PLUS 200**

<b>NUMERO</b>	<b>DESCRIZIONE</b>	<b>QUANTITA' PER 1 MACCHINA</b>	<b>DA ORDINARE</b>
01	SPINA ELASTICA M10	1	
02	FORCELLA LATO TRATTORE 1" 3/8 YORK 8	1	
03	CROCIERA PER CARDANO YORK 8	1	
04	FORCELLA LATO TUBO PER CARDANO YORK 8	1	
05	TUBO FEMMINA LATO TRATTORE YORK 8	1	
06	COPERTURA IN PLASTICA PER CARDANO Y.8	1	
07	TUBO MASCHIO LATO FRIZIONE YORK 8	1	
08	FORCELLA LATO TUBO PER CARDANO YORK 8	1	
09	FRIZIONE TIPO YORK 8 1" 3/4 Z 6 ATTACCO	1	



**FD4 Series  
Slip Clutch Assembly**



Description	Size	Qty	FD4 - FDG4 - FDS4
1 Complete bolt		8	6691010
2 Pressure Plate		1	1138007
3 Internal unit		2	1138008
4 Friction disc		4	1808010
5 Complete bolt for hub	1-3/8" 1-3/4"	2 2	6761270 6761480
6 Hub with flange	1/38" Z6 1-3/8" Z21 1-3/4" Z6 1-3/4" Z20	1 1 1 1	1708018 1708021 1708019 1706313
7 Hub Disc		1	1708034
8 Bearing		1	1705009
9 Flange for FD	5 6 8 10	1 1 1 1	1705041 1706033 1708006 1700006
Complete Assembly	8 10	1 1	1448034 1440034

TORQUE LIMITER CLUTCH  
 WALTERSCHEID 2500  
 2000 NM  
 1 3/4 x 6 spline  
 K64/22R  
 03/12  
 202118/0  
 200