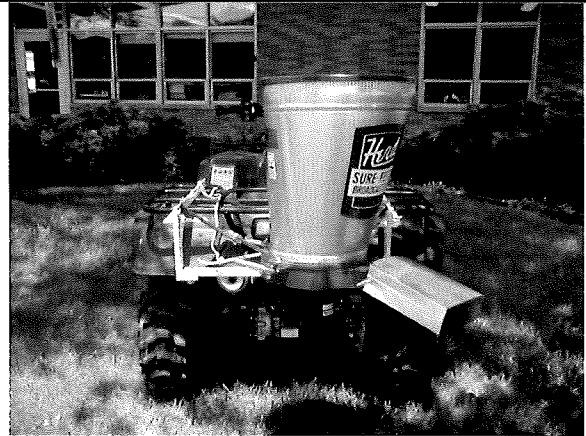
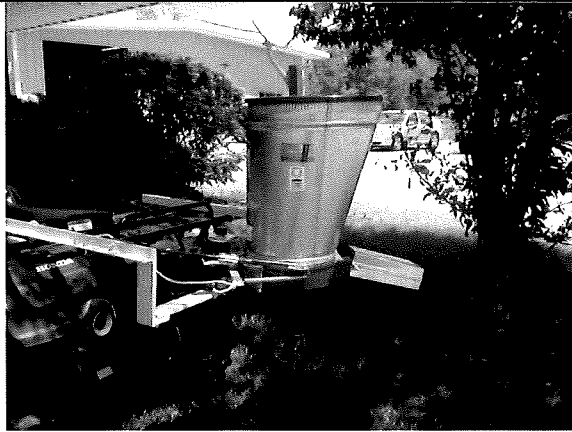


TO INSTALL PART #536 FRONT CHUTE TO GT-77 SEEDER



- 1. Seeder should be assembled as per instructions that come with seeder. Do not mount seeder to vehicle until front chute has been installed.**
- 2. Set base plate on letter 'G' and make sure the #517 blocking plate is in place. See photo #1 and #2**
- 3. Remove lid and set seeder on the hopper.**
- 4. Turn the fan by hand to slip the front chute on seeder as in photo #3.**
- 5. When front chute is in, place 1-1/4" X 5/16" hex head cap screw through the clips on the chute and through the ears on the GT-77 casting, as in photo #4. Install 5/16" nuts and tighten. Reach in the chute and turn the fan by hand, checking to see if the fan strikes the chute at any point. If there is contact, loosen the bolts holding the front chute to the seeder and adjust away from the fan and retighten.**
- 6. If the spout #827 is to be used, install it at this time.**
- 7. To determine the depth of spread, adjust the fan speed with the rheostat, (if purchased), and the angle of the spout.**
- 8. To set the seeder, figure how much material should be spread in a 30 second time. Catch the material for this time period and set the opening accordingly.**

TO INSTALL PART #536 FRONT CHUTE TO GT-77 SEEDER

- 1. Seeder should be assembled as per instructions that come with seeder. Do not mount seeder to vehicle until front chute has been installed.**
- 2. Set base plate on letter 'G' and make sure the #517 blocking plate is in place. See photo #1 and #2**
- 3. Remove lid and set seeder on the hopper.**
- 4. Turn the fan by hand to slip the front chute on seeder as in photo #3.**
- 5. When front chute is in, place 1-1/2 X 5/16 hex head cap screw through the clips on the chute and through the ears on the GT-77 casting, as in photo #4. Install 5/16 nuts and tighten. Reach in the chute and turn the fan by hand, checking to see if the fan strikes the chute at any point. If there is contact, loosen the bolts holding the front chute to the seeder and adjust away from the fan and retighten.**
- 6. If the spout #827 is to be used, install it at this time.**
↳ TO NARROW SPREAD
- 7. To determine the depth of spread, adjust the fan speed with the rheostat, (if purchased), and the angle of the spout.**
- 8. To set the seeder, figure how much material should be spread in a 30 second time. Catch the material for this time period and set the opening accordingly.**

FRONT CHUTE TO GT-77.....

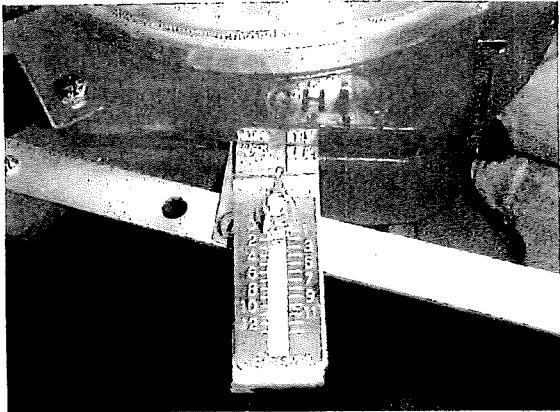


Photo #1

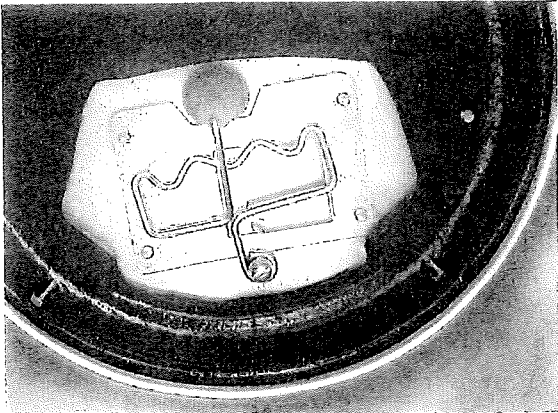


Photo #2

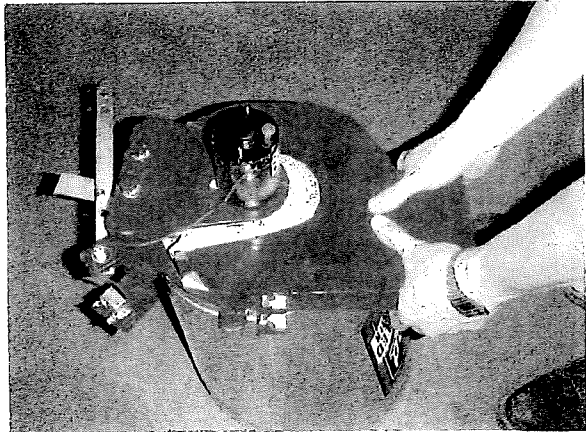


Photo #3

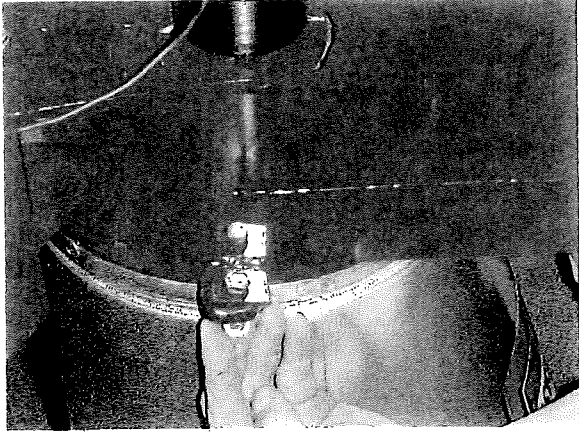


Photo #4