

CDA Head Assembly with Atomiser Disc (Ulva+)

ITEM	PART NO.	DESCRIPTION	QTY.
1	MI047	Locking Screw, Plastic (For Atomiser Disc)	2
2	MI025	Atomiser Disc Assembly	1
3	5399	Screw, Pan Head, No.6 x 3/8" SS	4
4	MI046	Motor Front Plate, Green	1
5	5398	O-ring (ulva+ Motor shaft)	1
6	5403	O-ring (Ulva+ Motor Body)	1
7	MI009	Motor (Ulva+)	1
8	4368T	Wire 1 mm x 0.24 m, Red (with crimp terminal)	1
9	4134T	Wire 1 mm x 0.24 m, Black (with crimp terminal)	1
10	MI045	Motor Housing, Green	1
11	6717	Boot, Rubber	2
12	-	Breather Tube	1

1.3 Hi-Flo Nozzle Assemblies

1.3.1 Hi-Flo Nozzle Assembly, Single *ZU 091*

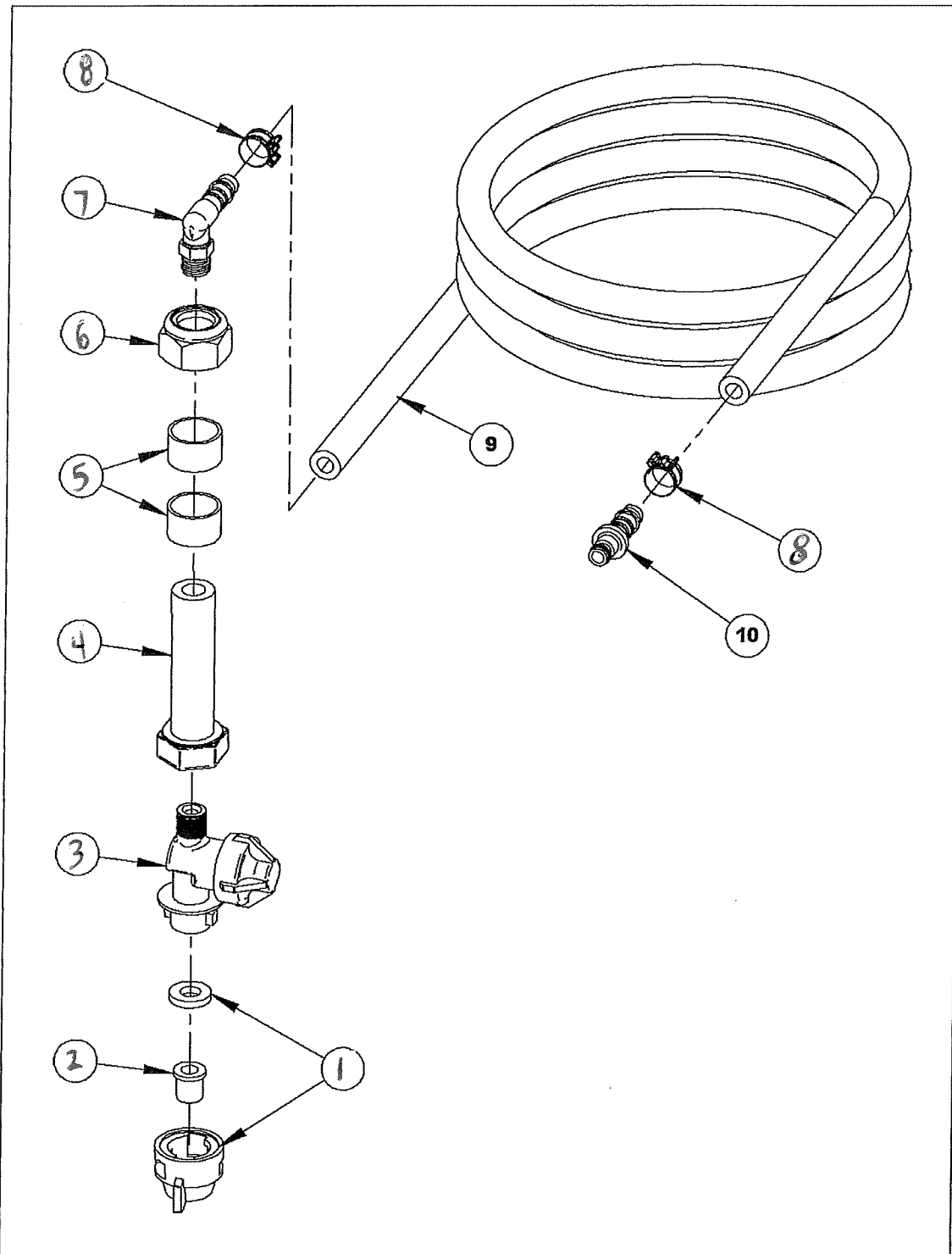


Figure 10 – Hi-Flo Nozzle Assembly, Single

Hi-Flo Nozzle Assembly, Single - Parts List

ITEM	PART NO.	DESCRIPTION	QTY.
1	CL061	Cap and Gasket Set, Green	1
2	FL-5VC	Spray Tip, Full Cone	1
3	CL060	Adapter, Nozzle Body	1
4	UF025S	Bolt, M20 x 75 Drilled and Tapped 1/4" BSP	1
5	ZD001	Spacer	2
6	UF031	Nut, Nyloc, M20	1
7	AL033	Elbow, male 10 mm x 1/4" BSP	1
8	NH015	Clip, Cobra	2
9	CL059	Hose, Pressure, 10 mm x 4.5 m	1
10	AL032	Hose Connector, Plug, 10 mm	1

1.3.2 Hi-Flo Nozzle Assembly, Twin

ZU091E

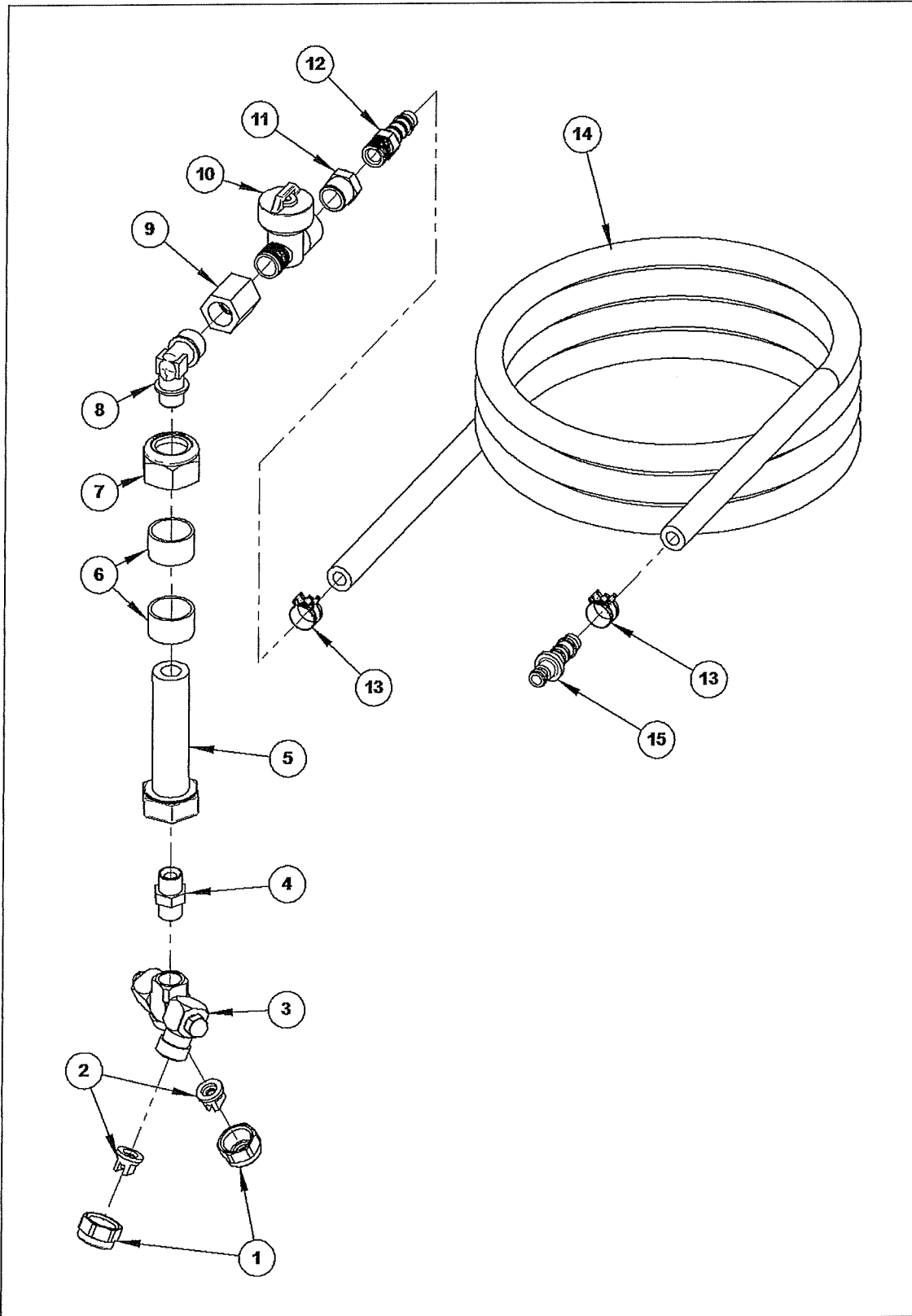


Figure 11 – Hi-Flo Nozzle Assembly, Twin

Hi-Flo Nozzle Assembly, Twin - Parts List

ITEM	PART NO.	DESCRIPTION	QTY.
1	CP1325	Nozzle Cap, Brass	2
2	XR11004	Spray tip, ceramic, #4	2
3	7450-2T	Double Swivel Nozzle, Type 7450	1
4	BI009	Nipple, 1/4"	1
5	UF025S	Bolt, M20 x 75 Drilled and Tapped 1/4" BSP	1
6	ZD001	Spacer	2
7	UF031	Nut, Nyloc, M20	1
8	AL020	Reducing Elbow, 3/8" x 1/4"	1
9	BI004	Coupling, 3/8" Female	1
10	ZT002	Valve, Non-Drip	1
11	BI007	Bush, 3/8" x 1/4"	1
12	AL039	Hose Connector, Straight, 10 mm x 1/4" male	1
13	NH015	Clip, Cobra	2
14	CL059	Hose, Pressure, 10 mm x 4.5 m	1
15	AL032	Hose Connector, Plug, 10 mm	1

