



World Leader in Transplanting Technology

WolfPRO Model

Set-up & Operating Instructions

Checchi & Magli

v3 March 2020

Here is a list of key points to do when setting up a new WolfPRO machine. The purpose of this manual is to explain how to properly adjust your machine. We will detail these key points in this document, but to get started, here is an outline below.

The key is to have someone trained on the farm that becomes the C&M EXPERT! Please read and study this manual to understand how to maximize your success.



OUTLINE & Key-Point CHECKLIST:

There are 8 key items for optimal machine performance--

- 1) Well prepared/tilled ground OR bed with tight plastic mulch
- 2) Well prepared seedling/plug/clone
- 3) Ensure the machine is set/adjusted properly to begin
 - 3-A) 3-POINT LINKAGE - The 3 point linkage must be either vertical OR leaning slightly toward the transplanter (NOT leaning toward the tractor)
 - 3-B) DRIVE WHEELS - Lower or raise the drive wheels into the furrow to the point where the parallelogram is fairly level (on each row - located close to the tool bar)
 - 3-C) PACKING WHEEL DOWN PRESSURE RATCHET
- tightening helps to close the hole made by the cup
- 4) WATER - Turn on and adjust water flow and timing
- 5) PACKING WHEELS - Adjust the packing wheels (in and out OR angled)
- 6) DEPTH GUAGE - which lowers or raises the packing wheels for planting depth
- 7) CHANGING NUMBER OF CUPS- Your machine will come according to your indicated plant-to-plant spacing when ordered. If you need to add or remove a cup do so now.



close cup hole

1) Well prepared/tilled ground

Farmers know that soil prep is critical for transplanting. Proper soil prep is critical for our transplanters to work properly. We need a consistent, cultivated depth of 4"-6" for the plant to be transplanted properly and thrive.

This soil has been **recently tilled** and prepared. The ground must be well prepared.



2) Well prepared seedlings/plugs/clones

It is imperative that by the time you go into the field you have a **healthy mature plug** to put into our machines.

It is critical that the complete plug pulls out of the tray and that the seedlings are fairly consistent in size.



GOOD



GOOD



BAD

You can see how this plug is not developed and the plug falls apart when pulled out of the tray. Once planted it takes time for the plant to develop more roots to begin thriving.

Your WolfPRO shipment will arrive boxed and on pallets, 2 rows per pallet.



3) Ensure the machine is set/adjusted properly.

Here are some key points to consider when putting our WolfPRO model into the field:

These first two adjustments are critical. When the Wolf Pro has these two adjustments, the machine will not tear the plastic - as the ONLY 2 things riding on the plastic are the packing wheels and the rods/fingers that pressure down, or that keep the plastic down under each row unit. When properly set the row unit does not touch the plastic.

3 A) 3-POINT LINKAGE -

The 3-point linkage must be either vertical (straight up) OR leaning slightly toward the transplanter (NOT leaning toward the tractor). With the transplanter leaning slightly away from the tractor we allow for **better down pressure on the packing wheels**.

WolfPRO model required HP:

1 row= 50HP

2 row= 80HP

3 rows= 120 HP



3 B) LOWER THE DRIVE WHEELS AND LEVEL THE MACHINE -

Be sure that you ratchet down the drive wheels into the furrow so that the drive wheels engage the ground and that the machine is level/horizontal. The drive wheels must follow the tractor tires. A good point of reference is to have the parallelogram level.

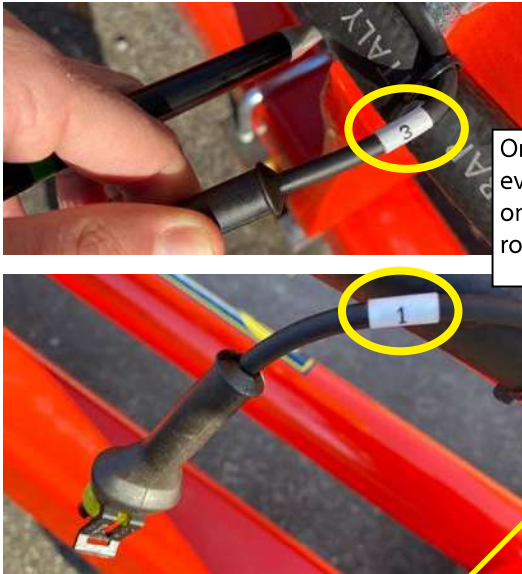


3 C) PACKING WHEEL DOWN PRESSURE RATCHET-

This ratchet is located under the seat. You can adjust it to apply more or less DOWN PRESSURE on the packing wheels to be able to close the hole made by the cup. Warning: Too much down pressure will cause plastic to tear.



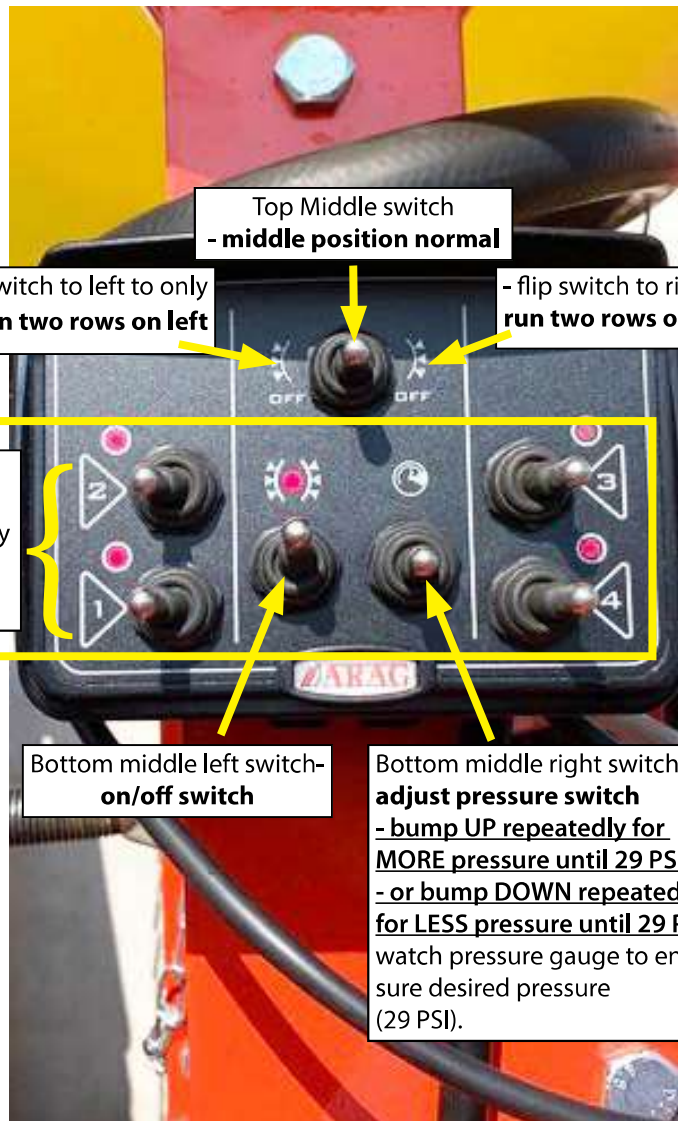
Here are the instructions to use the **Watering Electronic Control Panel** before going to the next page for setting the **Water Adjustments**.



On multi row machines every cable has a number on it to the corresponding row for proper hook-up.



WolfPRO WATERING ELECTRONIC CONTROL PANEL



Top Middle switch - middle position normal

- flip switch to left to only run two rows on left

- flip switch to right to only run two rows on right

1, 2, 3, 4
- One light per row
- so for one row only turn row one on.
Switch on or off.

Bottom middle left switch - on/off switch

Bottom middle right switch - adjust pressure switch
- bump UP repeatedly for MORE pressure until 29 PSI
- or bump DOWN repeatedly for LESS pressure until 29 PSI
watch pressure gauge to ensure desired pressure (29 PSI).

Set the pump pressure at 2 bar/29 psi
No more. No less.



WolfPRO WATERING ADJUSTMENTS



This is where you turn on/off the water PUMP.

This is where you turn on/off the water FLOW.



IMPORTANT: Turn the water pump OFF if you are not using it. (i.e. when you load new plants or water, at the end of the field, or if you take a rest).

4) TURN ON AND ADJUST WATER FLOW-- Make sure the water is turned on and that your pressure gauge is set on 29 PSI for 1 to 4 rows. You can adjust the quantity of water and the positioning of each drop of water.

WATER TIMING Adjustment

Top middle black knob



- right or left for sooner or later
- *desired application is to have water spray in plant/hole.*

Quantity of Water Per Plant Adjustment

Side black knob

- adjust up and down for quantity of water to discharge per plant.

The WolfPRO applies water after the seedling is planted in the ground and after the packing wheels pack the soil firmly-- then we apply water.



The maximum quantity of water changes according to the number of cups and to the speed.

With 2 cups at 1 mph it runs around 4 ounces per plant/drop.

Do not increase pump pressure with the intent to get more water.

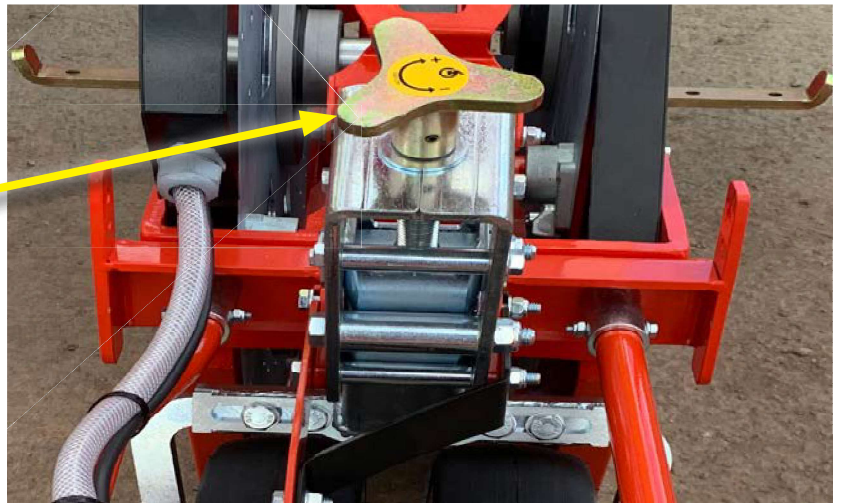
**5) ADJUST PACKING WHEELS--
(IN AND OUT)**

Be sure that the packing wheels are adjusted so that there is enough room for the tires to go around the seedling being planted - if its too tight the wheels will pull the plant back out of the hole/ground. As you notice, you can adjust the tires to be slightly angled or straight up and down.



6) ADJUST DEPTH GAUGE for Planting Depth--

The depth gauge is located on top of the packing wheels. A good average setting to start with is "3". Then you can adjust it up or down from there.

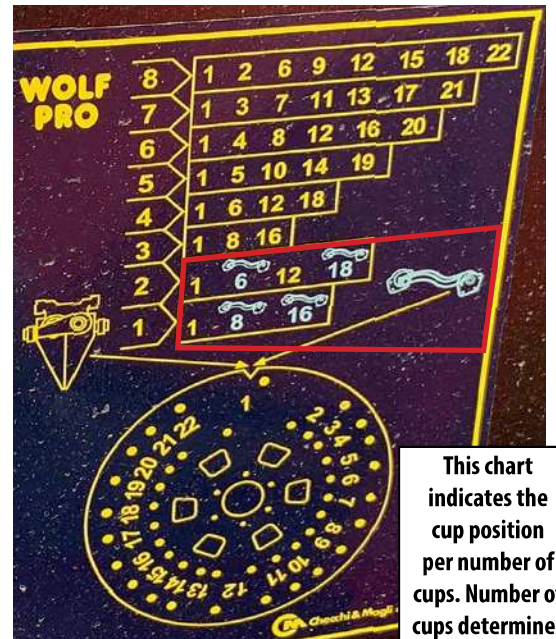
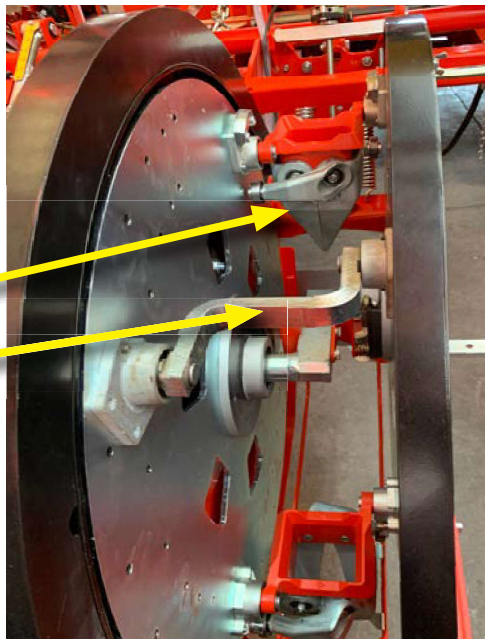


7) CHANGING NUMBER OF CUPS--

For greater plant-to-plant spacing you need fewer cups. You should use a "Support Rod" when using only 1 or 2 planting cups (see red box on chart).

**Deep Perforating
Planting Cups**

Support Rod



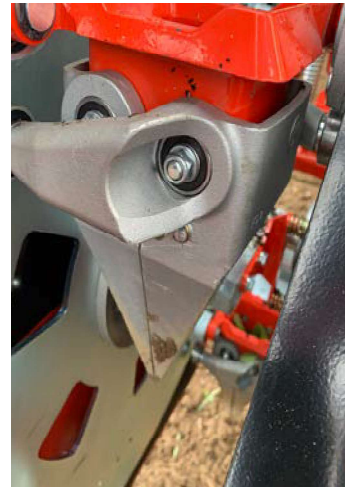
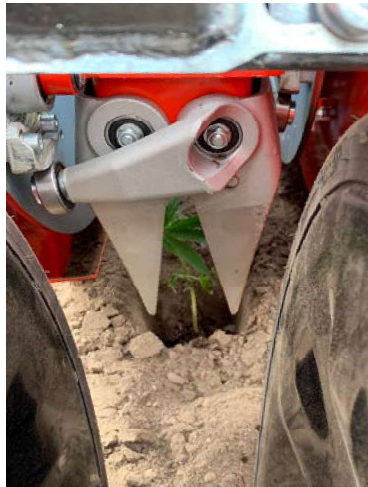
This chart indicates the cup position per number of cups. Number of cups determines plant-to-plant spacing.

Number of cups determines
plant-to-plant spacing.

The WolfPRO holds up to 8 cups.

PLANT TO PLANT DISTANCE

- 1 cup = 79"
- 2 cups = 39"
- 3 cups = 26"
- 4 cups = 20"
- 5 cups = 15"
- 6 cups = 13"
- 7 cups = 11"
- 8 cups = 10"



The WolfPRO features deep, perforating planting cups made of cast iron, stronger for better performance and longer life.

The Wolf cup is still a sturdy cup, but smaller than the WolfPRO cup and made of aluminum and harder to change out.

2020 WolfPRO Model (1 row)



Allen International, Inc. is the marketing arm of Checchi & Magli (C&M) and can not be held responsible if the equipment is not properly or safely used.

C&M (Checchi & Magli) North America © 2020

BestTransplanter.com

NEW 2020 WolfPRO FEATURES

The new 2020 WolfPRO pump has twice the pump capacity--

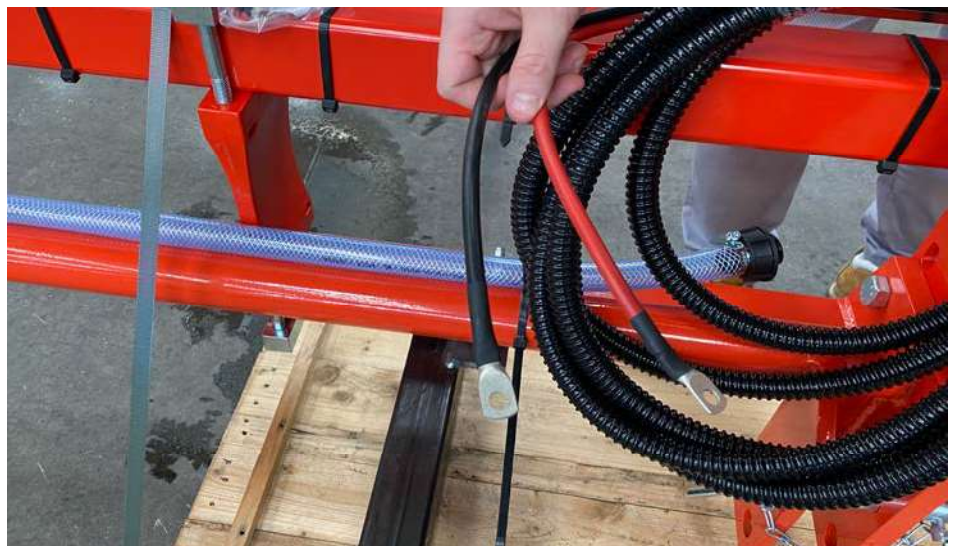
AND a larger inner diameter hose to increase water output at once.



This bar now flips up on hinges to shorten length for easier transport.



The WolfPRO electronic watering device runs off the battery of your tractor. Hook the red wire to the + node and the black wire to the - node of your battery.



KEY WolfPRO ADVANTAGES OVER THE COMPETITION AND OUR STANDARD WOLF:

1) Electronic watering system - water applied directly on seedling after seedling is planted and packed in ground.

2) Parallelogram - for consistent planting depth - each row follows the contour of that row which enables row unit to float up and down approx 3". Key Advantage is constant planting depth of plant.

3) The WolfPRO has heavier duty planting cups - twice the size/weight of the standard Wolf cups and made of cast iron. (The competition is made of aluminum.)

4) The tear in the plastic caused by the cup going down into the ground is only slightly larger than the size of the cup. The Wolf Pro cup goes down and up so quickly that the tear/cut in the plastic is minimal.

5) Easy to change the cups - the process of changing cups is approximately 5-10 minutes per cup. The process of changing the standard Wolf cups is one to two hours.

6) The cups have a self-cleaning scraper as the cups come out of the ground each time the scraper moves against the cup to scrape/clean the cup.

7) The packing wheels are bigger, pack tighter, and are fully adjustable, angle in and out, etc.

8) The WolfPRO is 50% faster than the Wolf and 2 times faster than a water wheel.

The WolfPRO can handle seedlings/plugs up to 3"x3" wide. 38 count trays and up - so 50, 72, 98, 128, etc.

Here is the WolfPRO plant spacing chart.

The WolfPRO holds up to 8 cups.

PLANT TO PLANT DISTANCE

1 cup = 79"

2 cups = 39"

3 cups = 26"

4 cups = 20"

5 cups = 15"

6 cups = 13"

7 cups = 11"

8 cups = 10"



WolfPRO model required HP:

1 row= 50HP

2 row= 80HP

3 rows= 120 HP



C&M (Checchi & Magli) North America © 2019

C&M North America • CandM@allenintl.net • 208-520-8222

Allen International, Inc. is the marketing arm of Checchi & Magli (C&M) and can not be held responsible if the equipment is not properly or safely used.

C&M (Checchi & Magli) North America © 2020

BestTransplanter.com

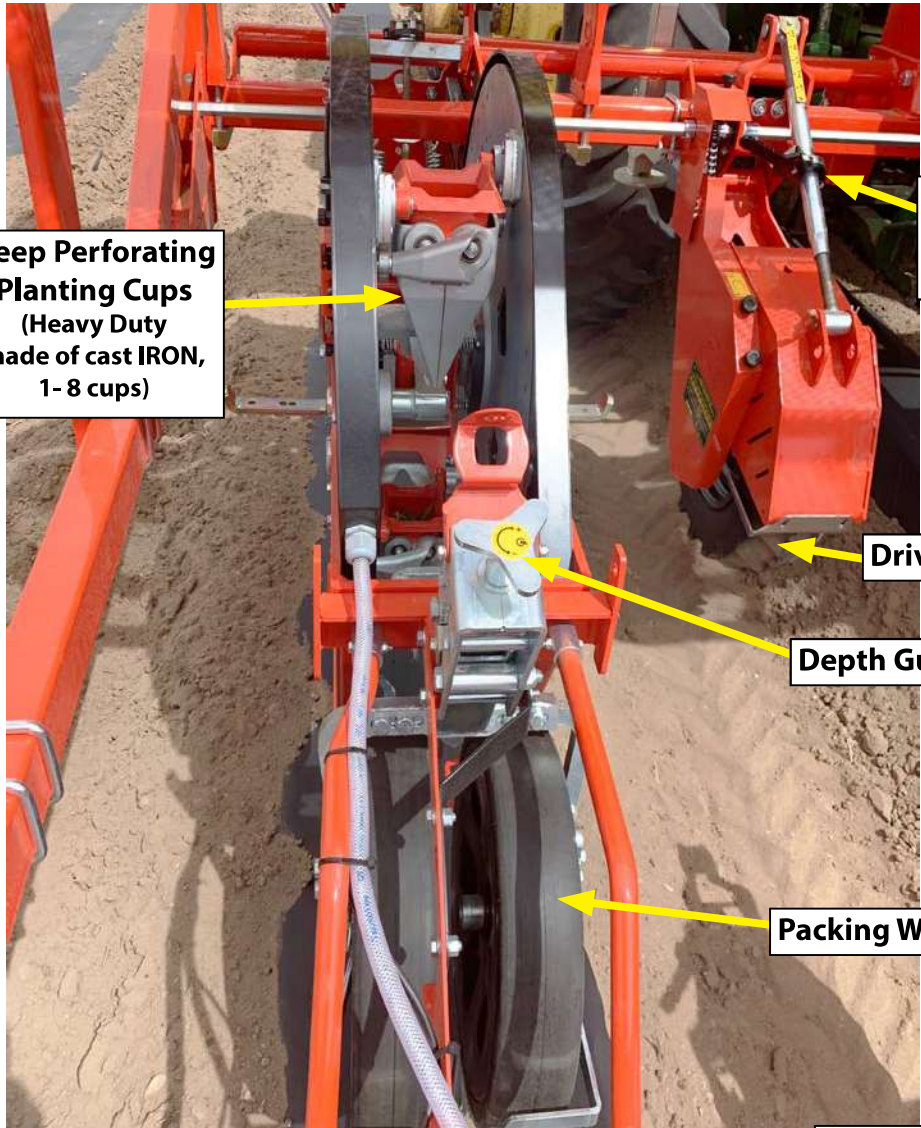
WolfPRO Part Names & Locations

Watering Electronic Control Panel

Water Pressure Guage



Deep Perforating Planting Cups
(Heavy Duty made of cast IRON, 1-8 cups)



Drive Wheel Ratchet

Drive Wheel

Depth Guage

Packing Wheels

Water Adjustments

Depth Guage

Water Applicator

Packing Wheel Down Pressure Ratchet

Parallelogram for constant planting depth

Rod skids to keep plastic down
(Skids ride on ground, but machine does not)

Packing Wheels

