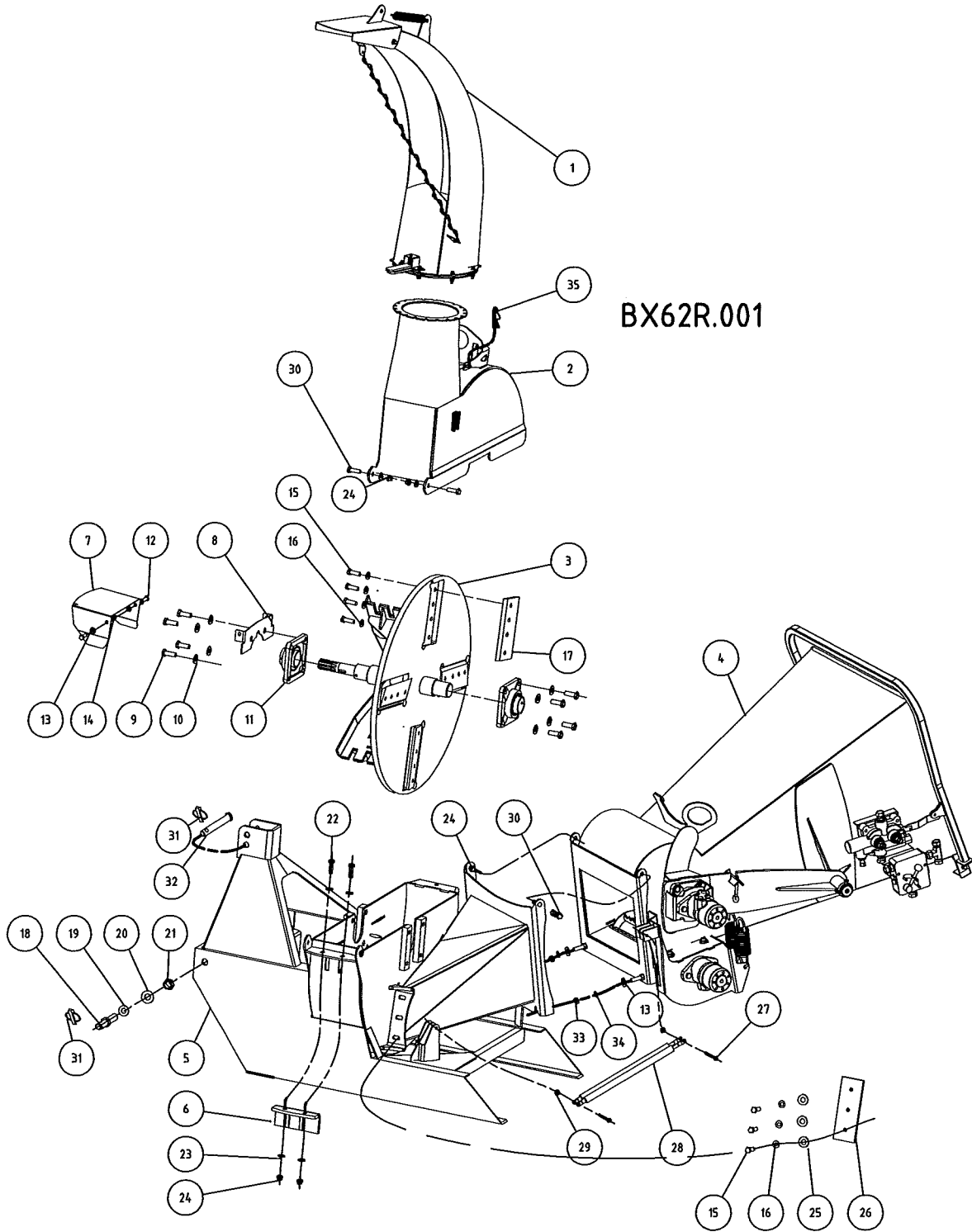
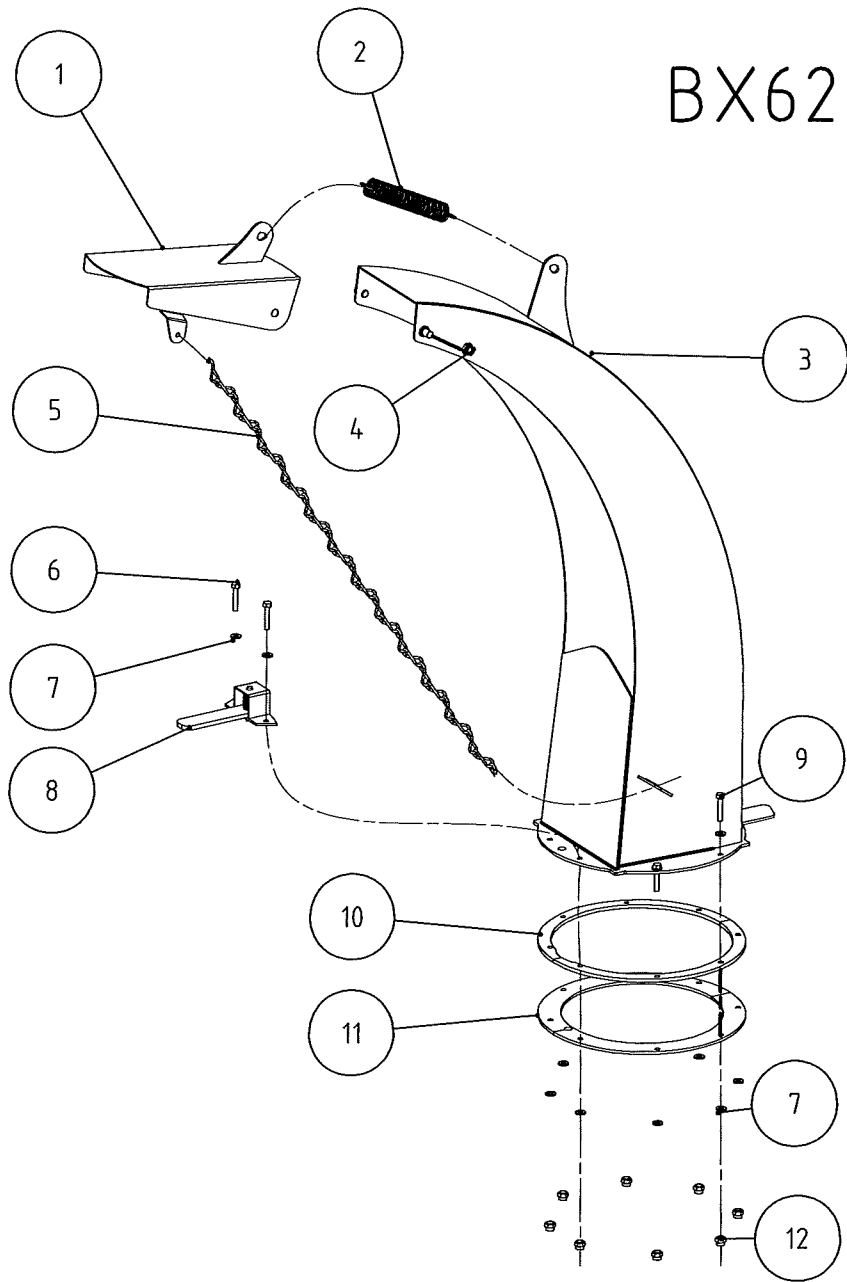


BX62R.001

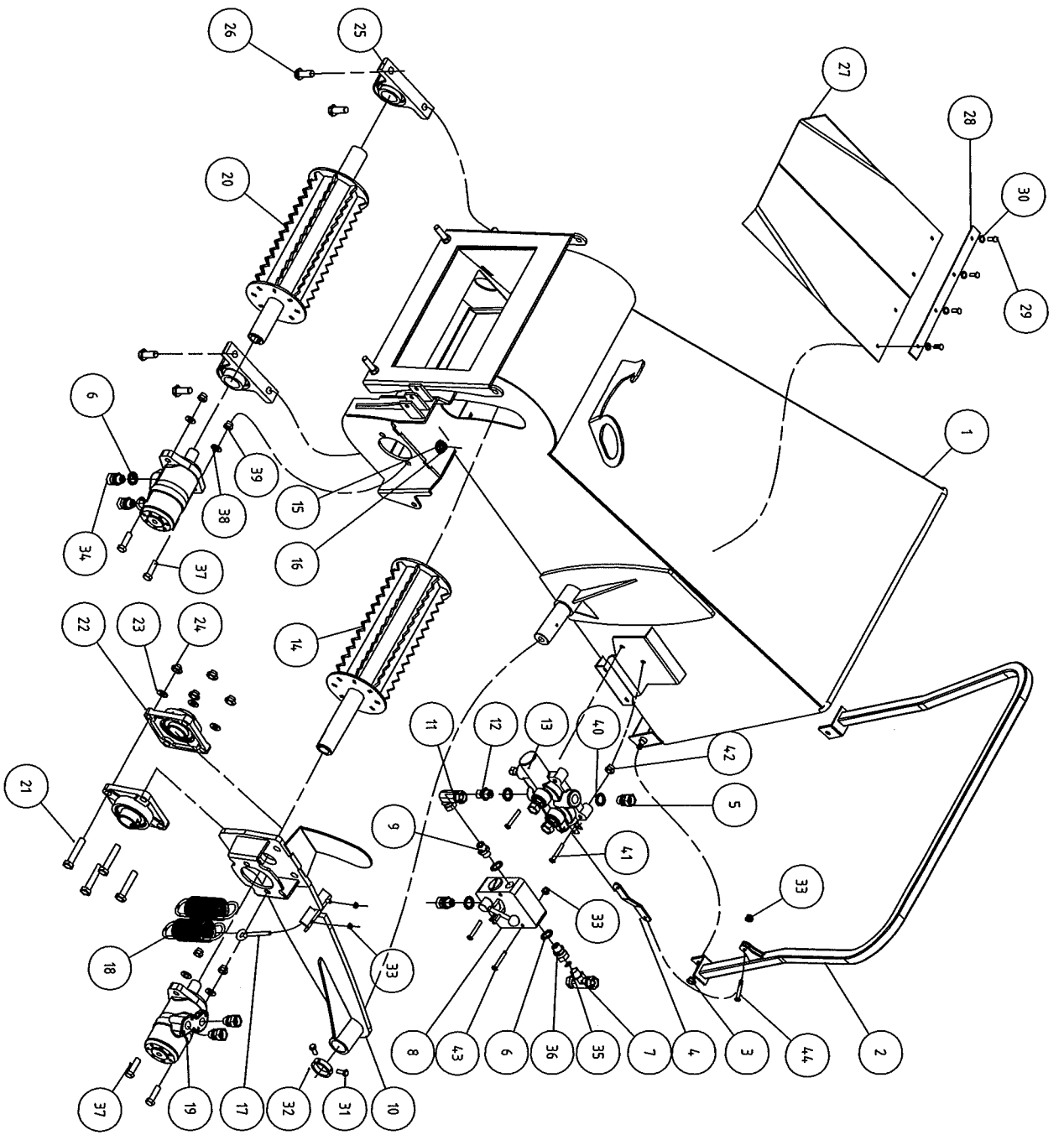


BX62R. 001 Assembly				
Ser.No.	Part No.	Name & Specification		Qty
1	BX62. 002	Discharge pipe components	出料口组件	1
2	BX62. 012	Shell-on weldment	上罩壳焊合	1
3	BX62. 013	Cutter weldment	刀盘焊合件	1
4	BX62R. 003	Hopper assembly	进料斗组合件	1
5	BX62. 011	Base weldment	底座焊合件	1
6	BX62. 014	Side knife weldment	侧刀焊合件	1
7	BX62. 102	PTO cover	PTO罩壳	1
8	BX62. 101	Bracket	托架	1
9	HBF14A1. 25A45	Bolts M14 * 1.25 * 45	螺栓M14*1. 25*45	8
10	PW14	Washer 14	平垫14	4
11	BUCF210	UCF210 bearing seat	UCF210轴承座	2
12	HBF10A25	The M10 * 25	M10*25	2
13	PW10	Flat pad 10	平垫10	2
14	NN10	Locknut 10	防松螺母10	2
15	HBF12A1. 25A30	bolts M12 * 1.25 * 30	M12*1. 25*30螺栓	16
16	SW12	Spring Washer 12	弹垫12	16
17	BX62. 103	Movable Knife	动刀	4
18	EFH175. 105	Lower pin	下悬挂销	2
19	SW22	Spring Washer 22	弹垫22	2
20	PW22	Washer 22	平垫22	2
21	HN22	Hex nuts 22	六角螺母22	2
22	HBF12A1. 25A35	Bolt M12 * 1.25 * 35	螺栓M12*1. 25*35	2
23	PW12	Washer 12	平垫12	2
24	NN12	Locking nut M12	防松螺母M12	4
25	PW12A3	washer 12 * 3	平垫12*3	3
26	BX62. 104	Fixed knife	定刀	1
27	HBF8A65	Bolt M8 * 65	螺栓M8*65	2
28	BX62. 120	Pneumatic spring	气动弹簧	2
29	NN8	Locking nut M8	防松螺母M8	2
30	HBF12A35	Bolt M12 * 35	螺栓M12*35	4
31	SP11	Lock pin 11	锁销11	3
32	BX42. 101	Upper pon	上悬挂销	1
33	HN10	Hex nuts 10	六角螺母10	2
34	SW10	Spring washer 10	弹垫10	2
35	RP4	R pin 4	R销4	1

BX62.002



BX62.002 Assembly				
Ser. No.	Part No.	Name & Specification		Qty
1	BX62.015	Shield weldment	出料口罩焊合件	1
2	BX62.117	Extension Spring 1	拉簧1	1
3	BX62.016	Discharge pipe welding	出料口焊合件	1
4	GX10	Cap nuts 10	盖型螺母10	2
5	BX62.118	Chain components	链条组件	1
6	HBF6A35	Bolt M6, * 35	螺栓M6*35	2
7	PW6	Washer 6	平垫6	16
8	20182	Lock seat weldment	锁座焊合件	1
9	HBF6A30	Bolt M6, * 30	螺栓M6*30	6
10	BX62.115	Middle Septa	隔片	2
11	BX62.116	Lower Septa	下夹片	2
12	NN6	Locking nut M6	防松螺母M6	8



BX62R.003

BX62R. 003 Assembly

Ser. No.	Part No.	Name & Specification		Qty
1	BX62. 017	Hopper weldment	加料斗焊合件	1
2	BX62. 018	Feed handle weldment	进料手柄焊合件	1
3	NN10	Locking nut M10	防松螺母M10	2
4	BX62. 110	Feed handle connecting plate	进料手柄连接板	1
5	BX62. 305	Switch Valve straight connector	换向阀直接头	3
6	BWG1/2	Combination washer G1 / 2	组合垫圈G1/2	7
7	BX62. 307	Tees	三通接头	1
8	BX62. 312	Control valve assembly	调速阀组件	1
9	BX62. 301	Control valve straight connector	调速阀直接头	1
10	BX62. 021	Pendulum shaft welding	摆轴焊合件	1
11	BX62. 306	Control valve fittings	调速阀卡套接头	1
12	BX62. 302	M18 connector	M18接头	1
13	BX62. 313	Switch Valve	换向阀	1
14	BX62. 019	Upper roller weldment	上滚筒焊合件	1
15	NN16	Locking nut M16	防松螺母M16	4
16	PW16	Washer 16	平垫16	4
17	BX62. 113	Hook-type screw	钩型螺钉	2
18	BX62. 112	Extension Spring 2	拉簧2	2
19	BX62. 314	Hydraulic motor	液压马达	2
20	BX62. 020	Lower Roller weldment	下滚筒焊合件	1
21	HBF14A70	Bolt M14X70	螺栓 M14X70	4
22	B UCF208	B UCF208 bearing	UCF208轴承副座	2
23	PW14	washer 14	平垫14	4
24	NN14	Locking nut M14	防松螺母M14	4
25	B UCP208	B UCP208 bearing	UCP208轴承付座	2
26	HBF16A50	Bolt M16X50	螺栓 M16X50	4
27	BX62. 108	Rubber baffle	橡胶挡板	2
28	BX62. 109	Layer	压条	1
29	HBF6A15	Bolt M6 * 15	螺栓M6*15	4
30	PW6	Washer 6	平垫6	4
31	HBF6A10	Bolt M6X10	螺栓 M6X10	2
32	BX62. 111	Block sets	挡套	1
33	NN6	Locking nut 6	防松螺母6	5
34	BX62. 303	Motor straight connector	马达直接头	5
35	OR10A2.5	O-ring (inner diameter * 2.5)	O型圈 (10内径*2.5)	1

BX62R.003 Assembly

Ser. No.	Part No.	Name & Specification		Qty
36	BX62.304	Valve straight connector	阀直接头	1
37	HBF12A45	Bolt M12X45	螺栓 M12X45	4
38	PW12	Washer 12	平垫12	4
39	NN12	Locking nut M12	防松螺母M12	4
40	BW18	Combination washer 18	组合垫圈18	4
41	HBF8A65	Bolt M8 * 65	螺栓M8*65	2
42	NN8	Locking nuts M8	防松螺母M8	2
43	HBF6A65	Bolt M6, * 65	螺栓M6*65	2
44	HBF6A25	Bolt M6 * 25	螺栓M6*25	1