



V.le dell'Appennino, 606 B
47121 - Forlì - ITALIA
Tel. 0543-86066
Fax 0543-83418
R.E.A. FO n. 114469

URL <http://www.rinieri.com>
E-Mail : rinieri@rinieri.com
Capitale Sociale € 98.800 i.v.
Partita IVA CEE: IT 00012520409
Iscr. Reg.Impr. Fo / P. IVA e Cod. Fisc. 00012520409

RSI



In and out mowing wheel

Instructions for use and maintenance

The following instructions must be read carefully prior to using the machine.



In accordance with article 2006/42/CE
and subsequent modifications

SERIAL	
--------	--

In regards to safety and reliability this machine was designed in accordance with the provisions and subsequent revisions set out in the EEC “machines article”.

The manufacturer therefore cannot be held responsible for machine use where modifications have been made without prior manufacturer’s consent, replacement parts used are not those stated by the manufacturer and use by untrained persons.

For safety issues not covered in this text please refer to general standards concerning the prevention of accidents.

Below is a list of definitions, descriptions and abbreviated terms most frequently used in the text.

Mass	weight of object or machine
A.P.	high pressure
B.P.	low pressure
min.	Minimum
max.	Maximum
l'	minutes
h	hours
L	width
P	depth (length)
H	height
Fig.	figure
Pag.	page
Autom.	Automatic
Man.	Manual
Rif.	Reference
Hp	Horsepower
°C	centigrade
kg.	kilograms
m.	meters
cm.	centimeters
mm.	millimeters
CEE	European Economic Community

ATTENTION

THE PURPOSE OF THIS TEXT IS TO INTRODUCE YOU TO THE BASIC STANDARDS AND CRITERIA YOU HAVE TO FOLLOW IN ORDER TO USE AND MAINTAIN THIS MACHINE AND THUS IT HAS TO BE READ BEFORE USING THE MACHINE.



This manual has to be considered as an integral part of the machine and must be passed on with the machine if resold. If you loose it or if it is not readable, it is important that you ask for a new copy to the producer, to the dealer or to the importer.

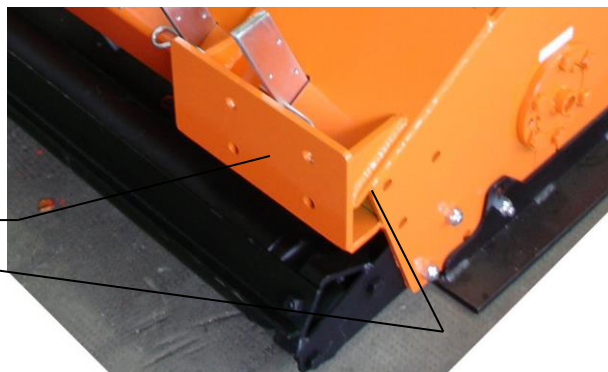
If you think that some themes are not very good illustrated, return to the producer, the dealer or the importer to have the needed information.

Page intentionally left blank

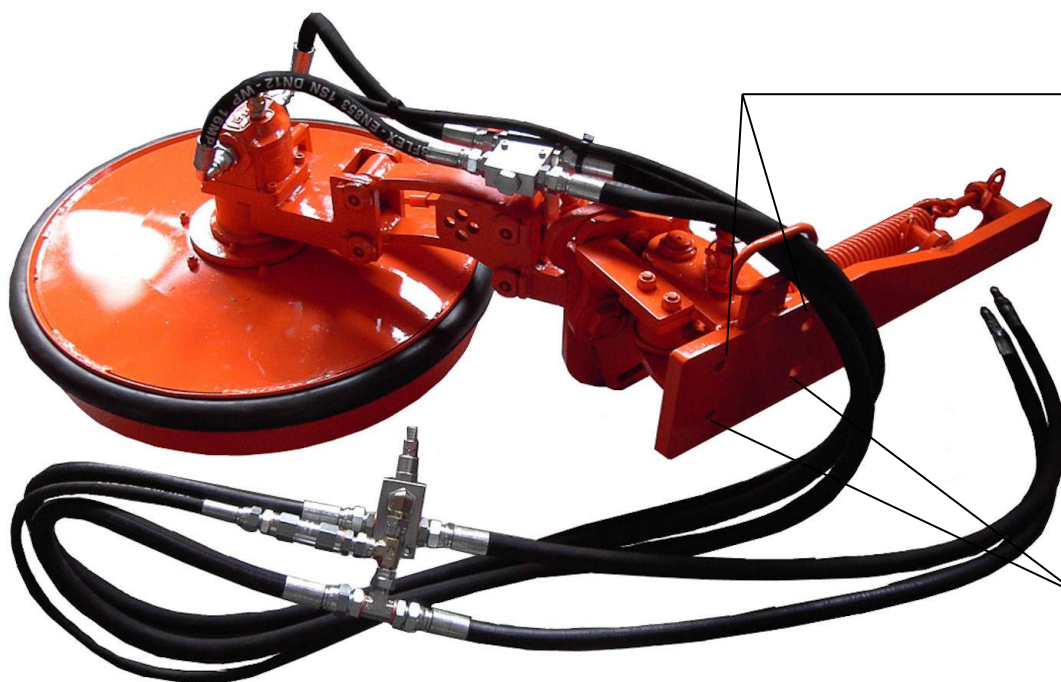
Application of the RSI mower wheel to the shredder with hoses to the tractor

Plate for connection RSI on the shredder

Weld the plate to on the frame of the shredder following the these step:
put the plate on the frame of the machine using the rank hole like a centering, also the plate of connection has to be perpendicular to the ground and the plate has to be in line with the right side of the machine.



Mounting the support of the RSI on the plate on the machine



Top holes
n.2 bolt16x50
n.2 washer d.16
n.2 nut M16

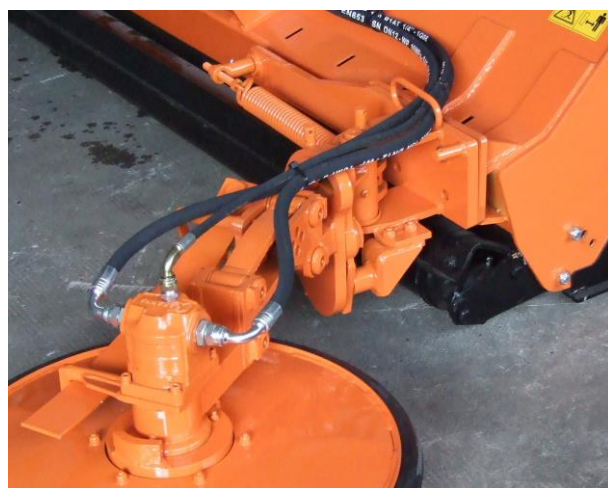
Bottom holes
n.2 bolt16x40
n.2washer 16

Connect the max pressure valve on the 3 point attachment



Drill two holes on the right side of the 3 point attachment and connect the max pressure valve to it.

n.2 bolt 6x50
n.2 washer d.6
n.2 nut M6



Application of the RSI mower wheel to the shredder with independent hydraulic kit

The system in question is composed of a pump powered by the PTO and attached next to the conical group.

The sequence is as follows:

Aspiration filter inside the tank

Pump group 2 from 26 CC left

1/2 "maximum pressure valve

Flow divider from 1/2 "to 2 ways to feed or exclude the mowing wheel

Mower wheel

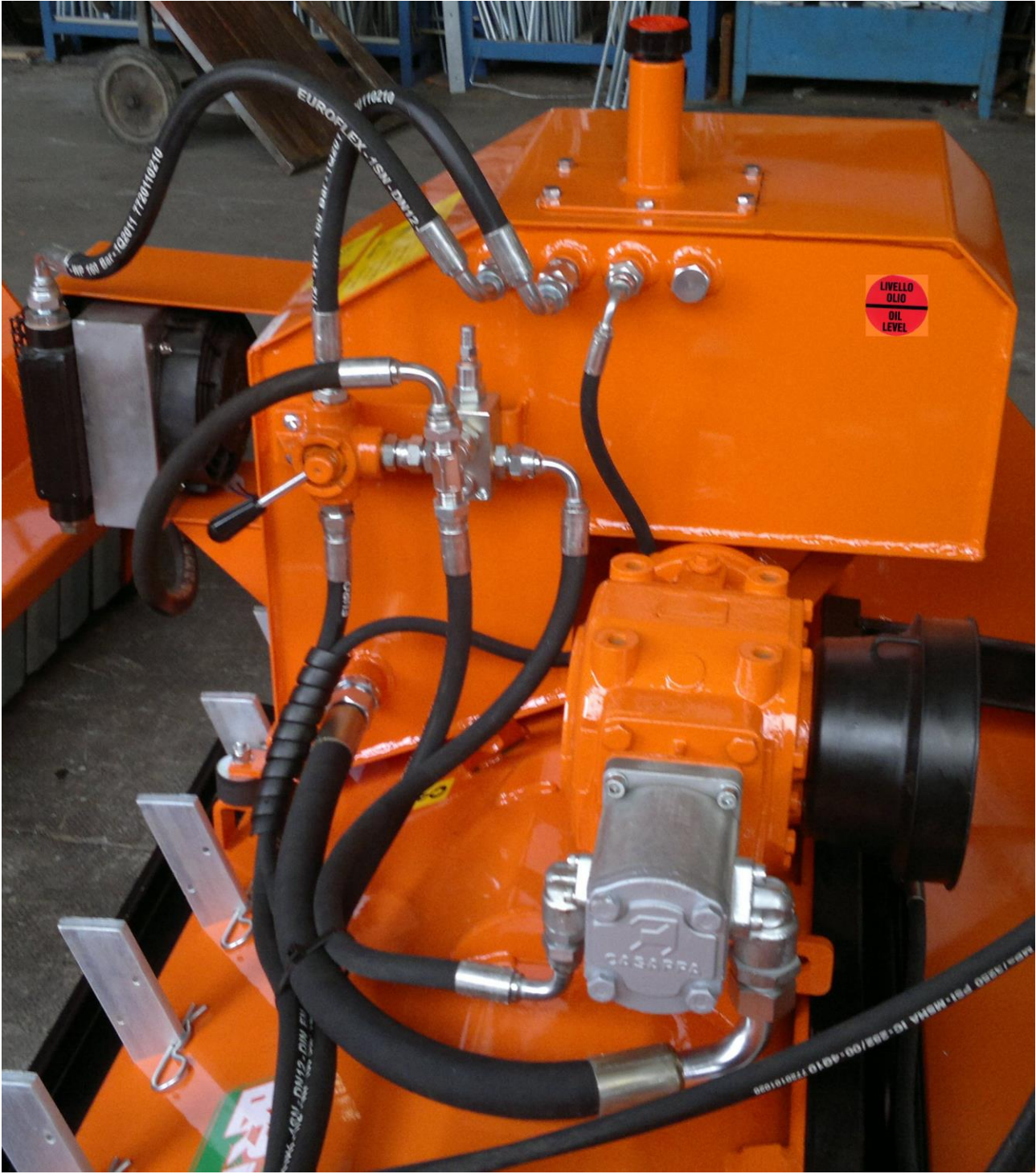
Return of the OPTIONAL oil cooler

Drain in the tank

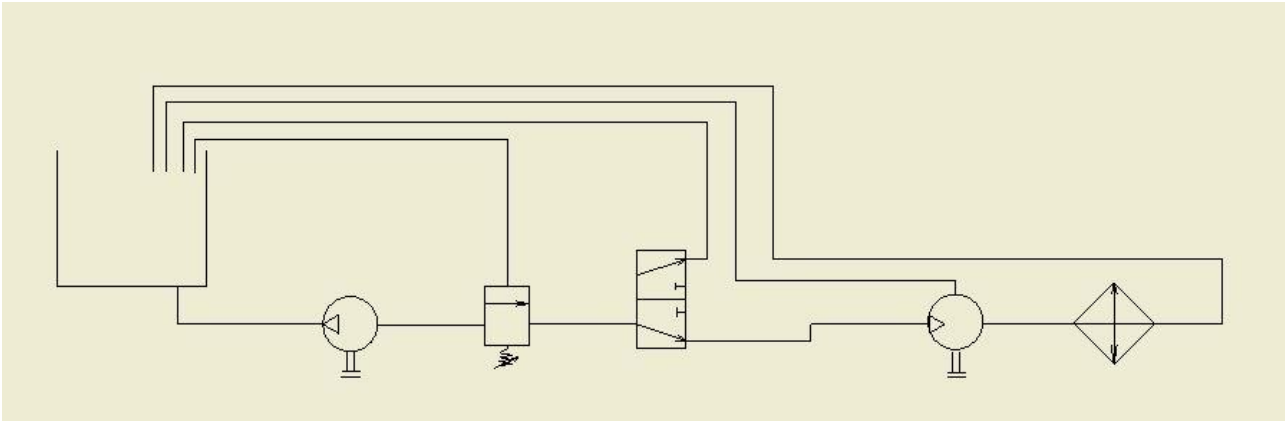
We also have two hoses to the tractor for the safety return of the OPTIONAL mower wheel.







Hydraulic schema



Operation flow diverter

To power the inter-row tool, the lever of the 2-way flow diverter goes to the high position, as shown in the pictogram, while when you want to exclude it, the lever goes to the low position.

Flow diverter lever

Hydraulic system maintenance

If the machine has got an hydraulic kit, we are used to employ an hydraulic oil such as Mobil DTE 25 with viscosity 46 and a working duration of 5.000 hours in constant conditions.

The required quantity are approximately 40 lt. for the single model, 70 lt. for the double model, with hydraulic oil level indicated by a sticker at 3/4 of the tank capacity.

Variable working conditions, such as: variation in effort, heating/cooling of the daily temperature, (with the consequent creation of condensation and pollution) decrease the working duration that we can evaluate in about 1200/1500 hours of work.

During this period you have to check periodically the oil level in the tank and if necessary fill it up with oil which has the same viscosity.

Perform this operation through the hole in the vented cap or the tank mouth of the previously removed drain filter, then replace the cap or drain filter.

When the oil has been completely replaced, we suggest to replace the filters at the inner of the tank too.

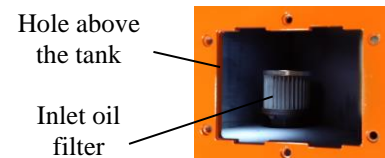
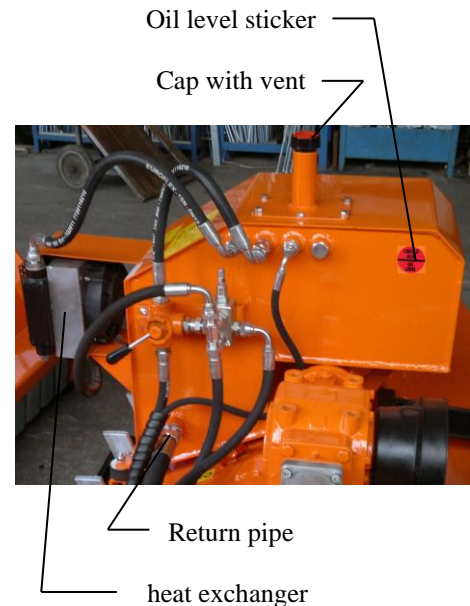
Remove the cap with vent or the drain filter, unscrew the closing cap or disconnect the return pipe under the tank, leaving the fitting mounted on the tank, then drain the oil into a collection container.

Once all the oil inside the tank has been emptied, refit the cap or tube.

If present, remove the sheet metal with the filler closing pipe and unscrew the suction filter.

Clean the filter (s) and replace it (s) if necessary, recommended.

Insert the quantity of oil indicated in this manual through the mouth of the tank, check the level and, if regular, reposition the sheet metal with the mouth closing pipe and the cap with vent or the drain filter, then clean any spills.



CONDITIONS OF GUARANTEE

This machine is guaranteed for 12 months from the date of purchase.

The guarantee covers the replacement of parts agreed as initially defective and for errant assembly operations.

The guarantee doesn't cover:

breakage caused by negligence or non observance of the standards outlined in this manual.

Use or maintenance carried out by untrained or unskilled persons.

Pieces or parts which have been tampered with.

For damages sustained during transport, for incorrect installation, for carelessness or inability to use it.

The guarantee also doesn't cover:

Everything considered materials of consumption.

As well as the necessary labour costs for repairs and the delivery expenses.

The parts which are deemed defective which must be repaired or replaced and are under guarantee will be returned to the manufacturer free port and redelivered to you carriage on delivery with transportation costs and risks wholly with the customer.

If the request is urgent the manufacturer will supply the parts with a standard invoice and reserving the acceptance of the guarantee until after receiving the faulty part.

THE MANUFACTURER reserves the right to modify the machines for commercial or technical motives, therefore descriptions and illustrations of this publication are up to date until printing.

If illustrations of tools or parts of the machine are different from this book, please refer to code number written in the spare parts catalogue.

As above said, this machine was designed in accordance with the provisions and subsequent revisions set out in the EEC "machines article", therefore it is safe and reliable and the manufacturer cannot be held responsible for improper use.

Where modifications have been made without prior written consent, replacement of used parts different from those stated by the manufacturer and use of the machine by untrained persons, the manufacturer cannot be held responsible.

For safety issues not covered in this text please refer to general standards concerning the prevention of accidents.

All disputes and controversies lie exclusively with the territorial competence of the judicial authority of the place of production.