

Herd

THE BROADCAST-SEEDER SPECIALIST PRESENTS....



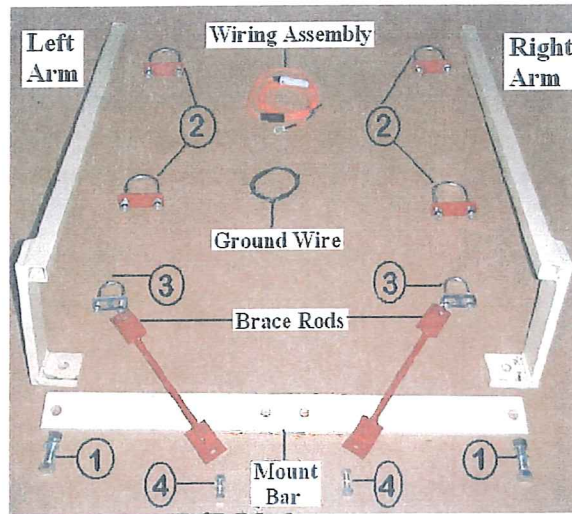
HERD'S MODEL GT-77 ATV FIRE ANT BAIT BROADCASTER

- Calibration pre-set at factory for easy preparation of seeder
- Agitator for even feeding of material at all times
- Low amperage pull on electric motor for ATV's and vehicles with small charging systems
- Even spread of material
- Base of grey iron with galvanized hopper for strength on rough ground
- Unit comes complete.....No accessories are needed
- Hitches for most ATV's and other vehicles available
- Stainless steel pivot plate
- Holds 1.2 bushels of material
- Lid on hopper to keep fire ant bait in.....foreign materials out

When ordering, please list make, model and year of machine that broadcaster will be mounted on for correct mounting brackets.

CARTON "T" MOUNTING INSTRUCTIONS

THIS REPLACES MOUNTING BRACKETS FOR HONDA, KAWASAKI, YAMAHA, SUZUKI AND ATV'S WITH METAL RACKS



ASSEMBLY OF CARTON "T"

Connect mount bar to left and right arm as in photo #1. Do Not Tighten.

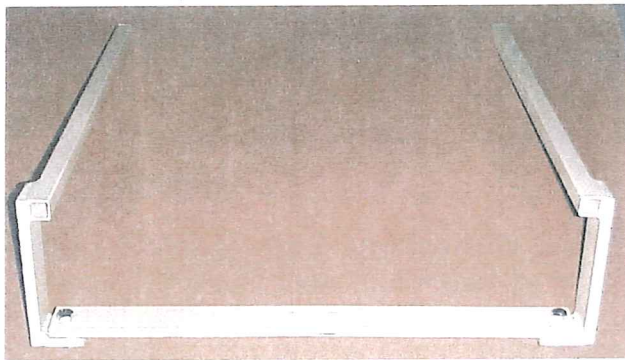


Photo #1



Photo #2

Set rack mount bars on rear rack of ATV. Using large U-bolts – connect to rack as shown in photo #2

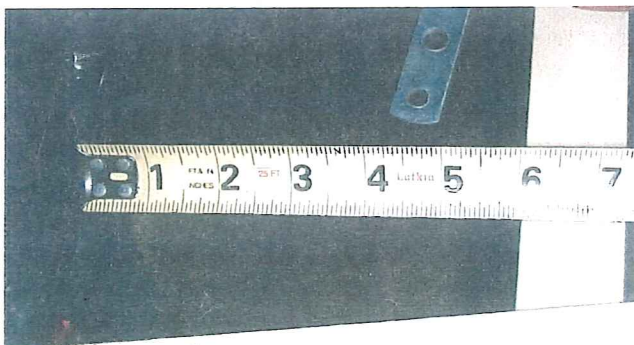


Photo #3

The mount bar should be 6" to the rear of your ATV rack. Space is needed for the handle on the GT-77 to open to the size you need. See photo #3. Now tighten 4 U-bolts holding seeder hitch to your ATV rack. Tighten mount bar to rack mount at this time. The seeder must be assembled before going any farther. Make sure this is done.